
St. Cloud

STATE TEACHERS COLLEGE

Asks You A Question



On any campus, the library should be the focal point of beauty and inspiration.

Its collections need safe housing; its readers deserve surroundings conducive to enjoyment and real learning.

The purpose of this bulletin is to inform the citizens of Minnesota of the serious condition and the inadequate facilities for service of the present College Library Building.

STATE TEACHERS COLLEGE
ST. CLOUD, MINN.

April 1948

ST. CLOUD

STATE TEACHERS COLLEGE

LIBRARY



1948

THIS IS WHAT YOU SEE

BUT

WHAT DO YOU **KNOW** ABOUT THIS
BUILDING?

1906-1948

This building was erected 42 years ago at a cost of \$25,000.

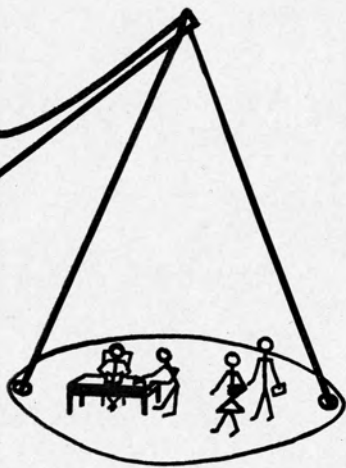
Originally planned as an elementary school, it has been used as a library since 1913.

It houses approximately 70,000 books, periodicals, and equipment valued at over \$500,000.

In addition to the library, it now contains cafeterias and junior high school classrooms.

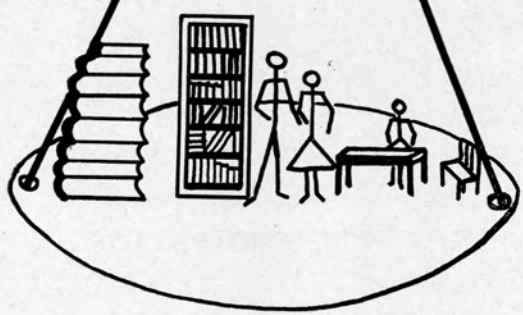
NO PROVISION has ever been made in the CONSTRUCTION for carrying the tremendous weight of books, book stacks, library equipment and crowds of college students.

**STUDENTS SEEK LEARNING UNDER
HAZARDOUS CONDITIONS**



1906

Built for children's classrooms, to support 75 pounds per square foot



1948

Now used as Library with load of 200 pounds per square foot wherever there is a bookstack

FIRE HAZARDS

The frame work is OLD and the inside trim is of wood—
PAINT-SOAKED AND INFLAMMABLE.

The wiring is obsolete and heavily OVERLOADED.

One open WOODEN stairway connects all three library floors.

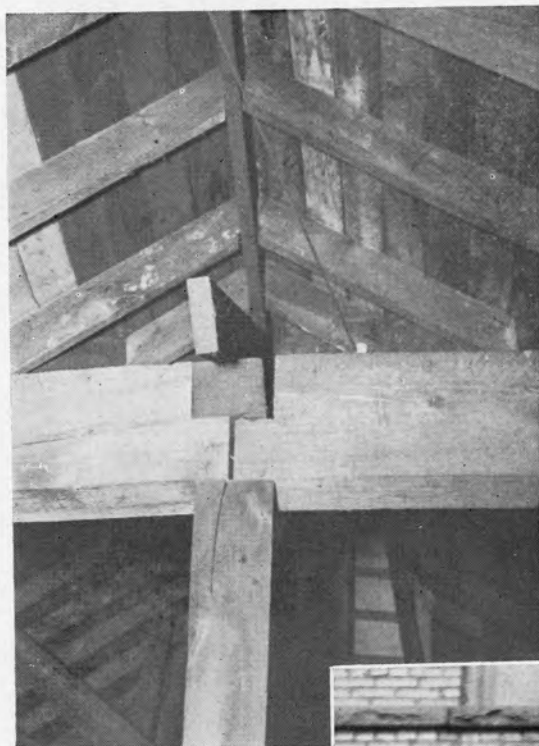
There is ONLY ONE easily accessible exit.

The cafeteria kitchens in the basement form FIRE HAZARDS.

Daily exposed to these hazards are crowds of students both
children and adults.

Likewise endangered is an investment of \$500,000 in books
and equipment.

THIS LIBRARY LIVES "ON BORROWED TIME"



The Attic

**DESIGN FOR
DISASTER**



Outside Wall

COLLAPSE HAZARDS

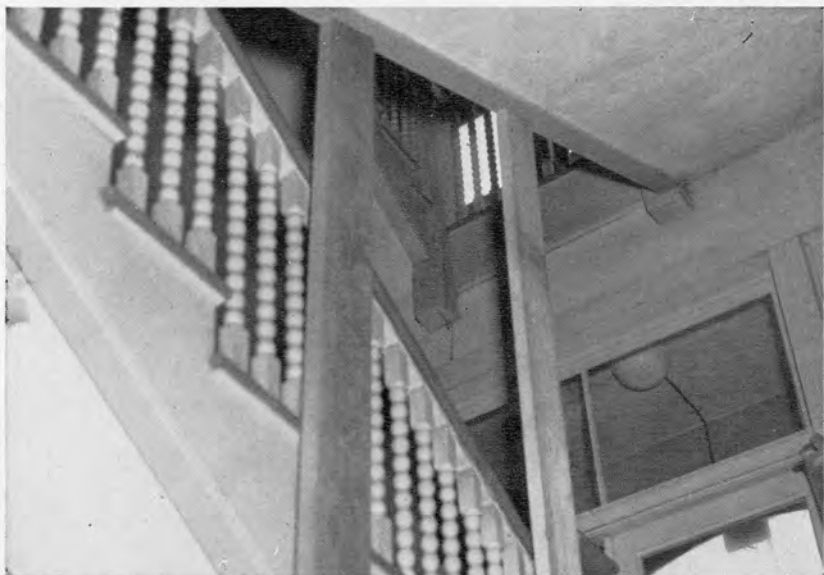
The wooden stairway is the only inside exit for all three floors. It was recently braced with planking to prevent collapse. (Note timber props in photo opposite)

The rooftruss, outer walls, window and door frames have cracked, bulged or sagged. (See photo page 5)

Throughout the building, the floors have sagged from strain and weakness. (Note dip in photo opposite)

This building is structurally unsound and inadequate to protect either the lives or the property now housed in it.

CATASTROPHE CAN HAPPEN HERE



Stairway to Second Floor Showing Props



Sag in the Floors

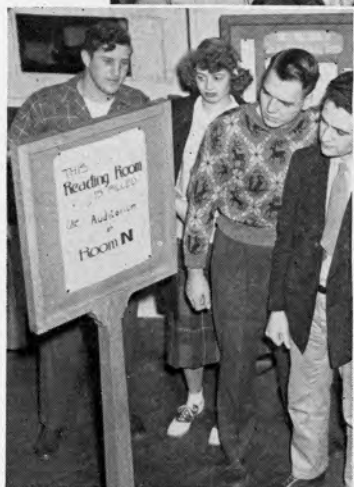
CROWDED CONDITIONS

The Library accommodates only 12 per cent of the present enrollment. It should provide for 50 per cent.

Students must be turned away at the busiest hours to rooms in other buildings. (See photo opposite)

Crowded conditions make effective study impossible.

**IS THIS GIVING MINNESOTA YOUTH
A FAIR OPPORTUNITY?**



Primed for Work They come
and Find

THIS

AND

THIS



BASEMENT SHELVES

Approximately one-half of the books of the Library are shelved in poorly ventilated, dimly lighted basement rooms. This shelving was necessitated by the excessive weight and lack of space on the two upper floors.

The books thus shelved are damaged:

1. In winter by EXTREME HEAT from the overhead pipes. (See photo opposite)
2. In summer by DAMPNESS.

The use of these books is curtailed because the basement rooms are not easily accessible to the main library.

**HERE IS FALSE ECONOMY IN THE
USE OF PROPERTY AND TIME**



**OVERFLOW
BASEMENT
STACKS**



THE JUVENILE COLLECTION

About one-third of the juvenile books are shelved outside of the juvenile room.

Upper shelves are beyond the reach of the children.

Less than one-third of the seats needed for the elementary children are provided. There is little opportunity for personal or group enjoyment.

The Minnesota State Department of Education has set a standard of 500 square feet for a class of 20 junior high school students. This library has 72 square feet for a class of 20 junior high school students.

IS THIS "AN INVITATION TO LEARNING?"



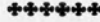
OTHER DEFICIENCIES

- I. There are INADEQUATE facilities for:
 - a. Exhibits
 - b. Index files
 - c. Work of the library staff
 - d. Special collections

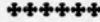
- II. There are NO facilities for:
 - a. Typing study notes
 - b. Audio-visual aids
 - c. Recreational reading
 - d. Faculty conference
 - e. Group or individual study
 - f. Special research work

BOOK COLLECTIONS

The St. Cloud State Teachers College Library has an outstanding collection of books.



Thousands of its volumes could never be replaced if destroyed.



In 1946 the collection received high rating by the North Central Association of Colleges and Secondary Schools. As to the building, the Association report reads:

"It is totally inadequate . . . and a fire trap . . . the maximum utility of this old building has been achieved through ingenuity and careful planning. The college is sorely in need of a modern library building if it is to maintain the position of a first class educational institution. The plant is old, unattractive, entirely inadequate and unsatisfactory for a modern educational program."

The facts assembled indicate the urgency for ACTION toward obtaining a new building.

WILL YOU HELP
BRING THIS NEW BUILDING
TO A REALITY IN 1949?

PREPARED BY
THE FACULTY LIBRARY COMMITTEE
STATE TEACHERS COLLEGE
ST. CLOUD, MINN.

Clifford O. Bemis
Edwin H. Cates
George H. Lynch
Mamie R. Martin
Perry G. Rawland
Eunice Smith
Richard M. Smith
Audra Whitford
Grace S. Nugent, Chairman

Ex-officio members

Edith E. H. Grannis, Librarian
John W. Headley, President

