

EIGHTH ST SO

CENTENNIAL HALL
LEARNING RESOURCES CENTER

ST. CLOUD STATE COLLEGE
ST. CLOUD, MINNESOTA

STATE PROJECT 3947
O.E. NO. S-6-00151-0
MASTER BUILDING 44

**MECHANICAL
PLUMBING HEATING
AND AIRCONDITIONING**

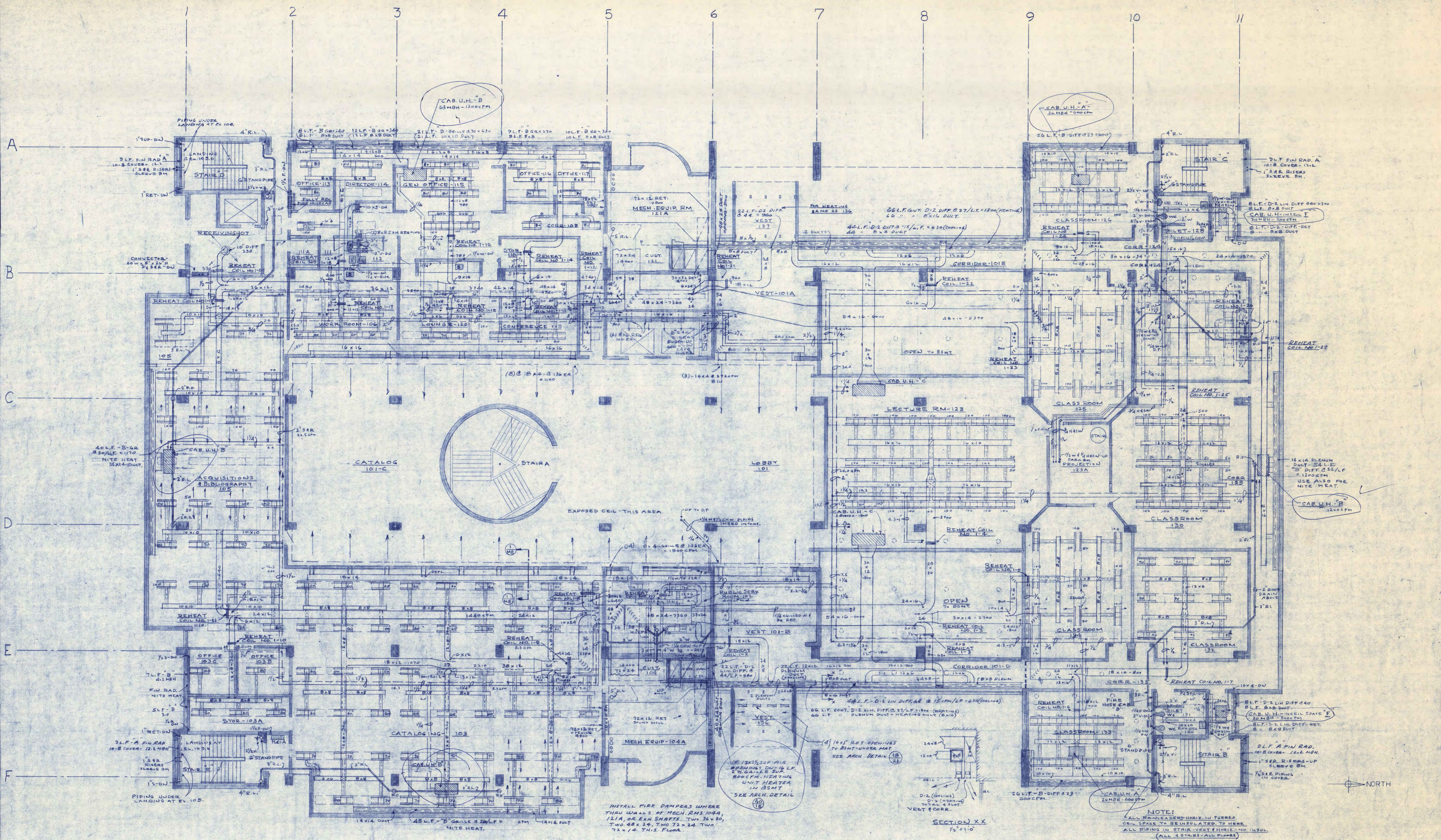
ORR-SCHLEN-MAYERON
AND ASSOCIATES, INC.
CONSULTING ENGINEERS
104 CURRIE AVENUE, MINNEAPOLIS, MINN 55402

COMM 6526
DRAWN KWM
DATE 7/13/68
CHECKED VES

S.C. SMILEY & ASSOCIATES - ARCHITECTS
Minneapolis Minn.

I hereby certify that this plan, specification, or report was prepared by me or under my direct supervision and that I am a duly Registered Professional Engineer under the laws of the State of Minnesota.
Thomas C. Stelmach
Date 7/19/68 Reg. No. 3774

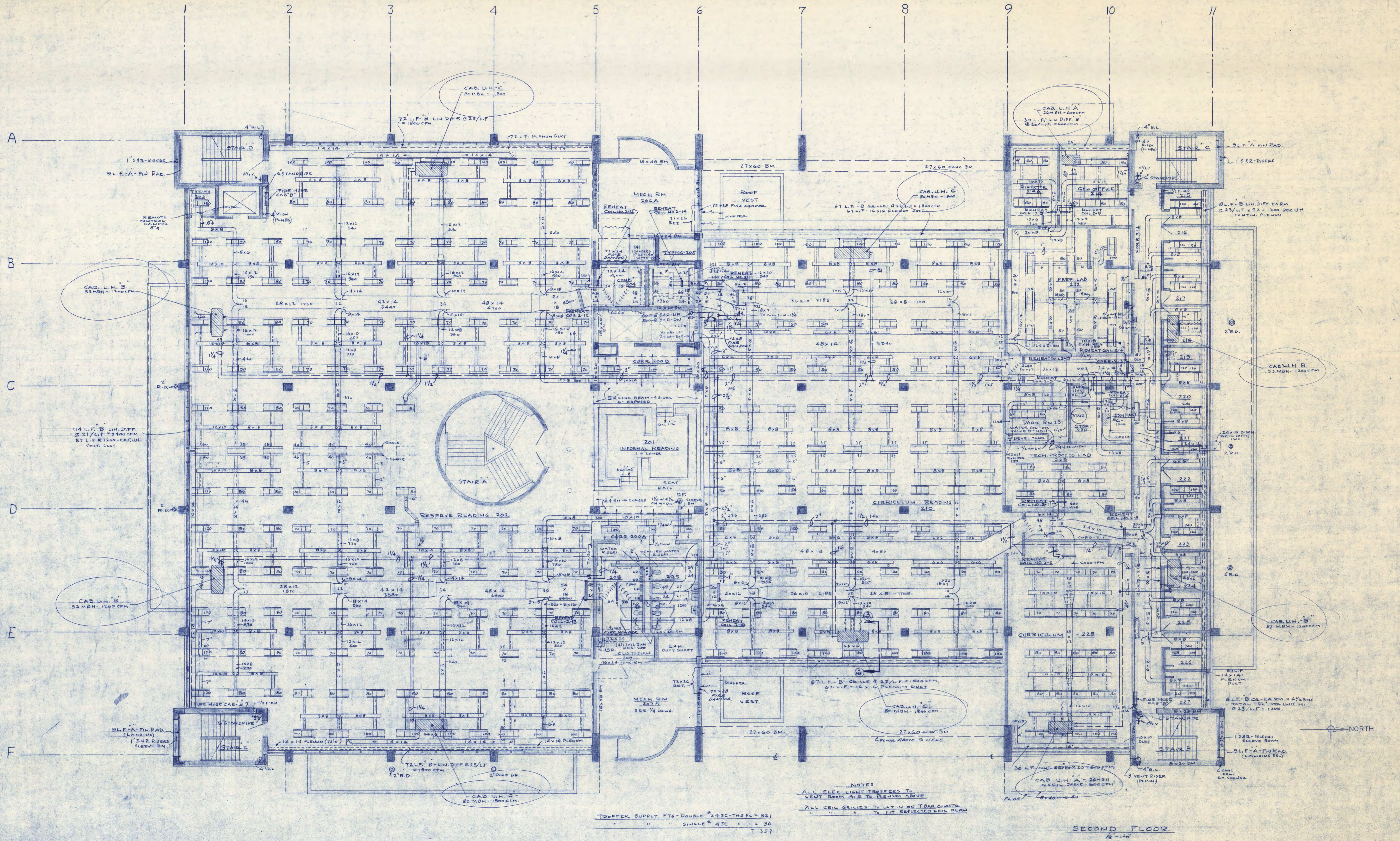
PLOT PLAN
SCALE 1" = 20'-0"



FIN RADIATION SCHEDULE
 SHOWN "A" = 1' x 4 1/2" - 48 FIN ELEMENT - DV418 COVER = 1246 BTU/L.F.
 "B" = " " 33" " - DV412 " = 900 " "

FIRST FLOOR PLAN
 1/8" = 1'-0"

TROFFER SUPPLY FITTINGS - DOUBLE 245E-215 THIS FL.
 " " " " SINGLE - 45C 22
 T-237



NOTES:
 ALL ELEC LIGHT TROFFERS TO VENT ROOM AIR TO PLENUM ABOVE
 ALL CELL GRILLES TO LAY IN ON TRAFFIC CONSTR TO FIT REFLECTED CELL PLAN

TRIGGER SUPPLY FT6-DOUBLE 2450-THIS FLOOR 321
 " " " SINGLE 450 " " " 336
 T 357

SECOND FLOOR
 1/8" = 1'-0"