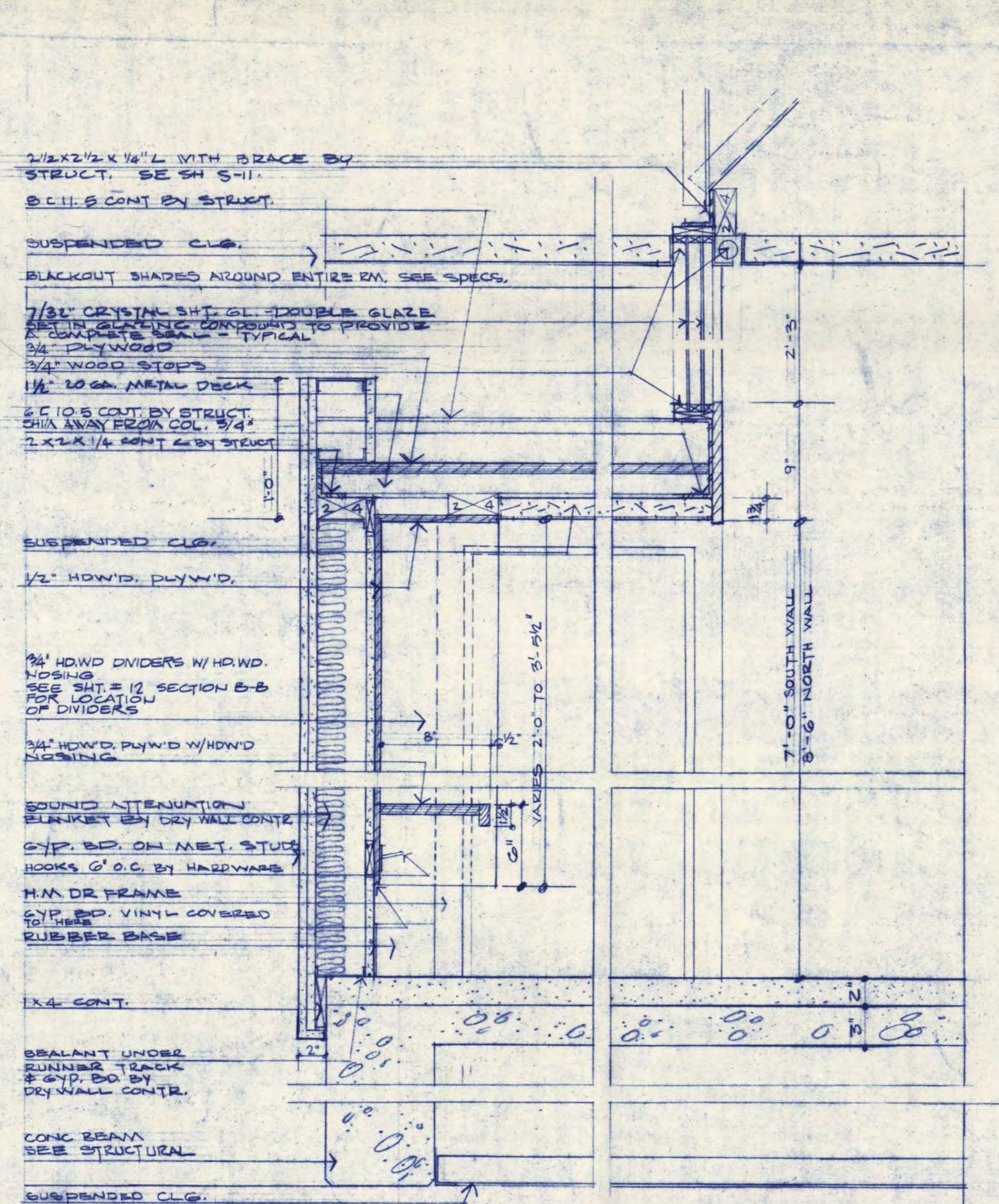
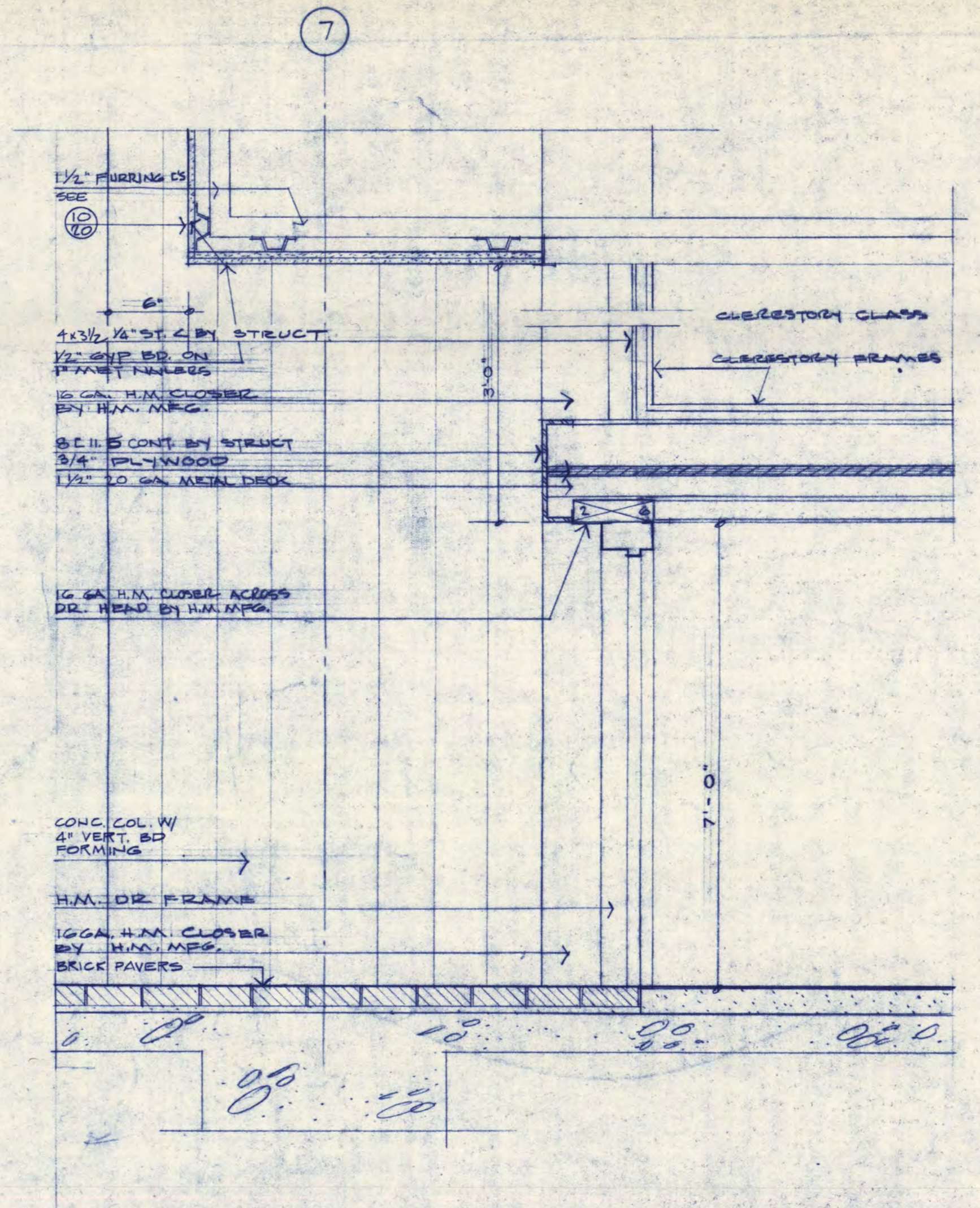


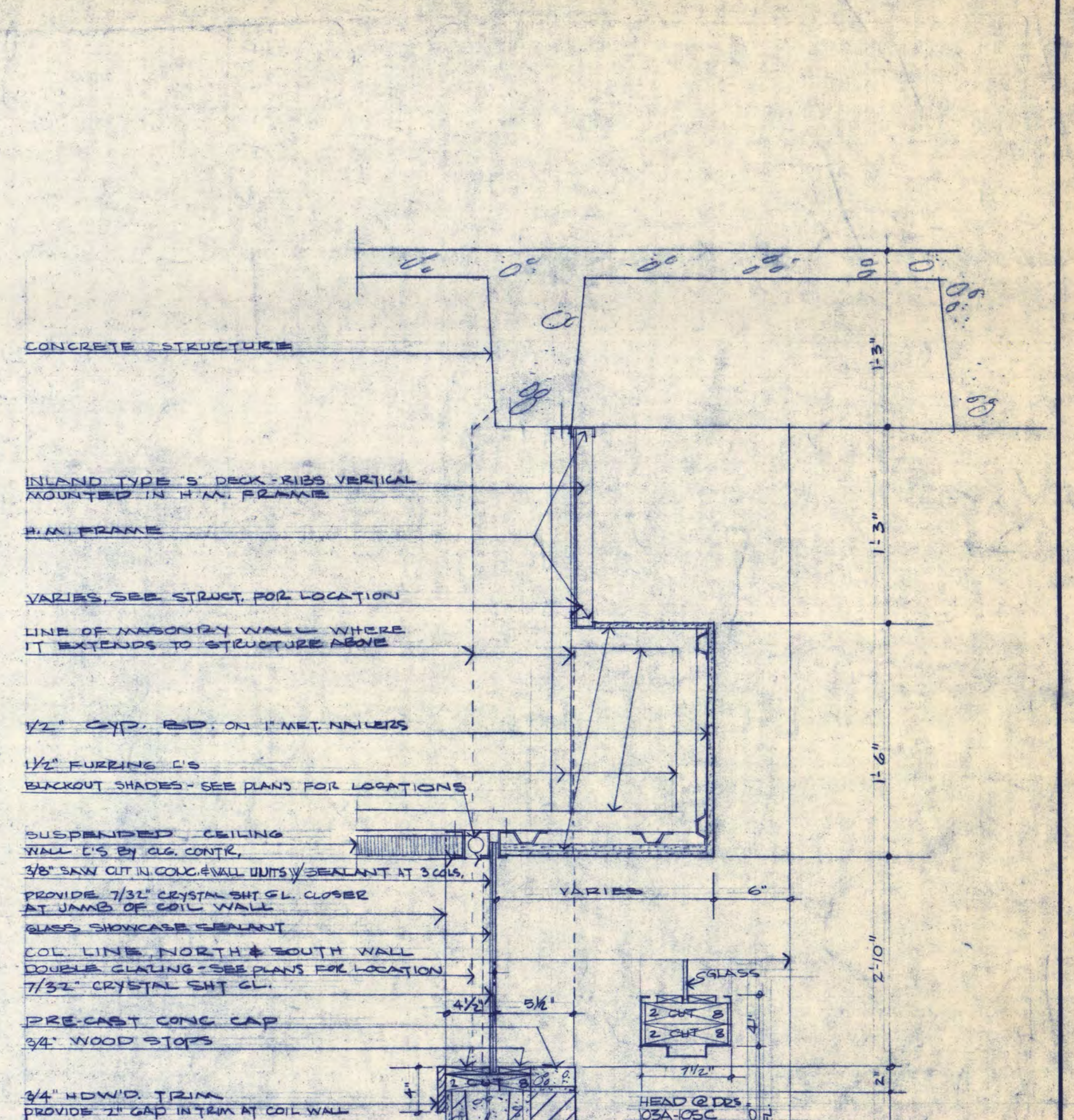
10 ENTRY'S 101A & 101B AT FIRST FLOOR OPENINGS



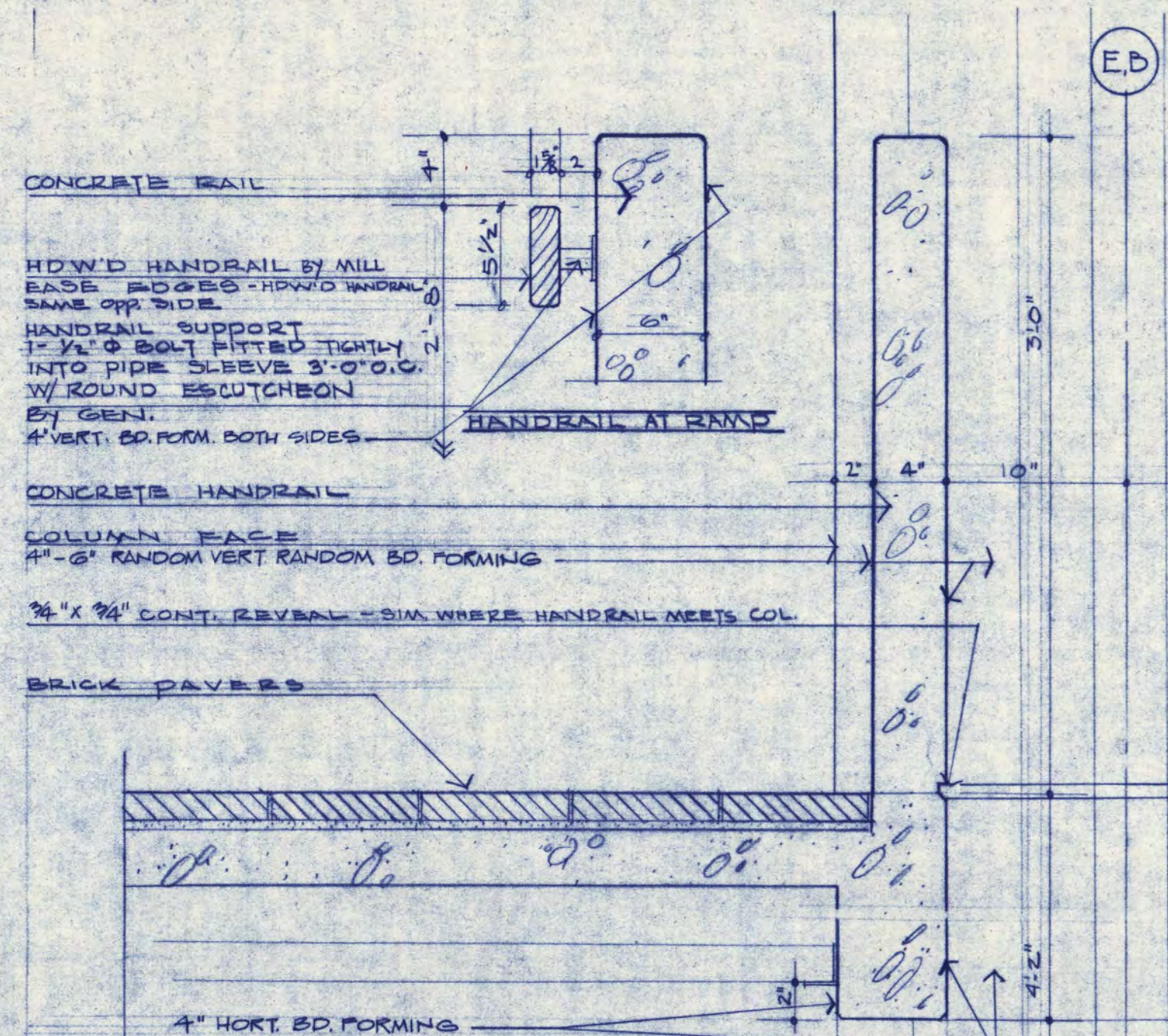
4 CLASSROOM WALL ADJACENT FIRST FLOOR OPENINGS



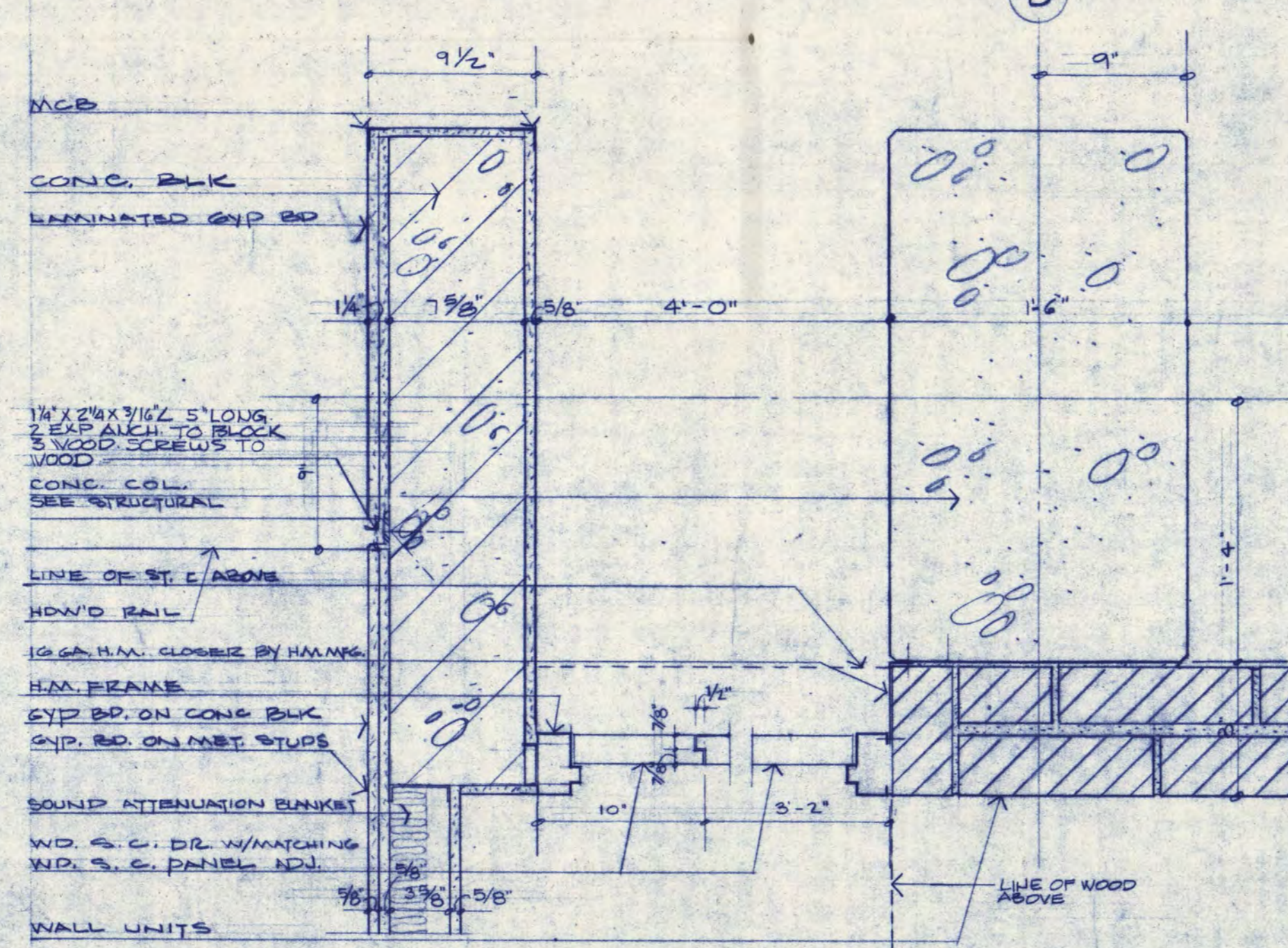
7 VERTICAL SECTION AT ENTRANCES TO CLASSROOM 123



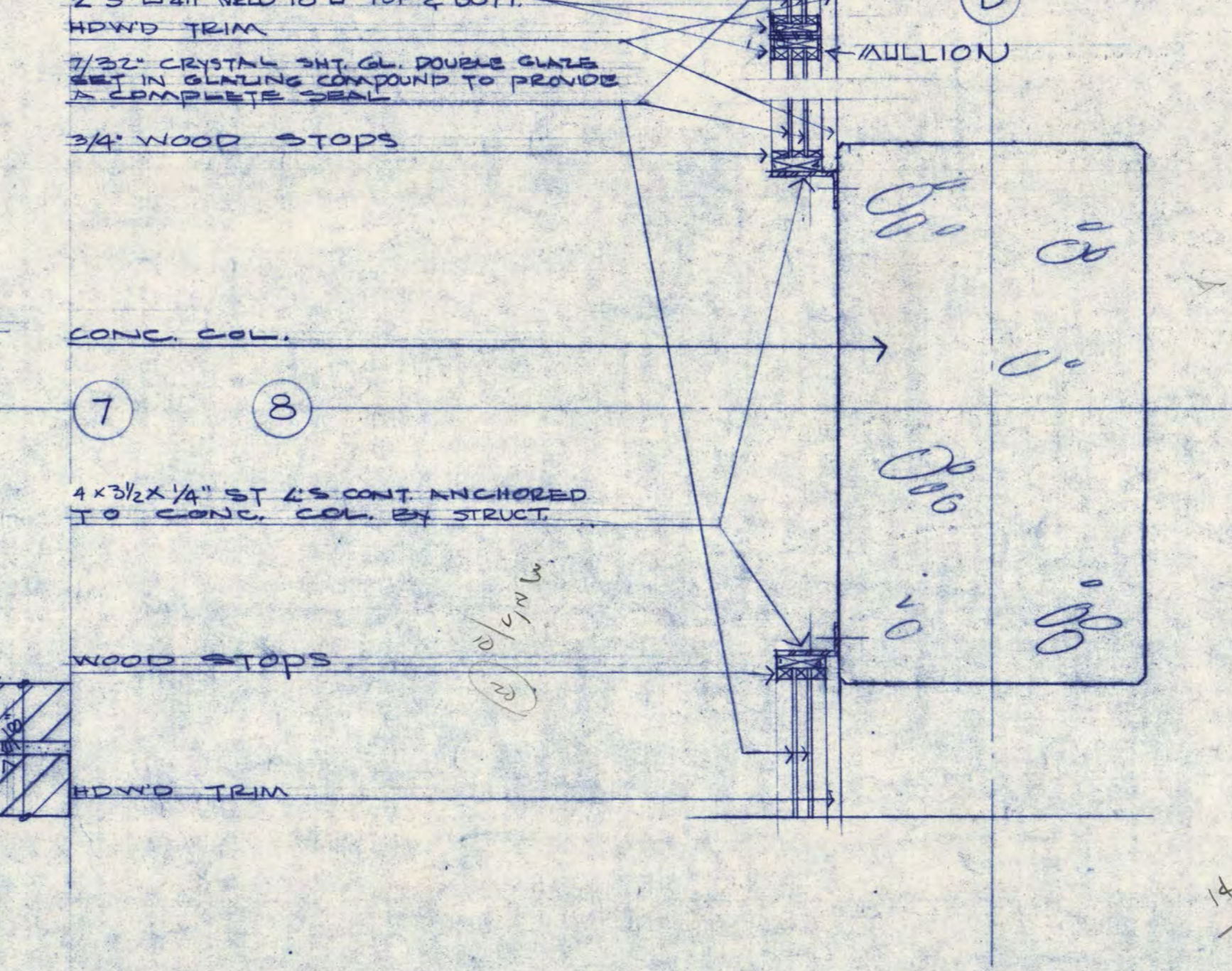
10 WALLS ADJACENT ROOMS 101 & 101C



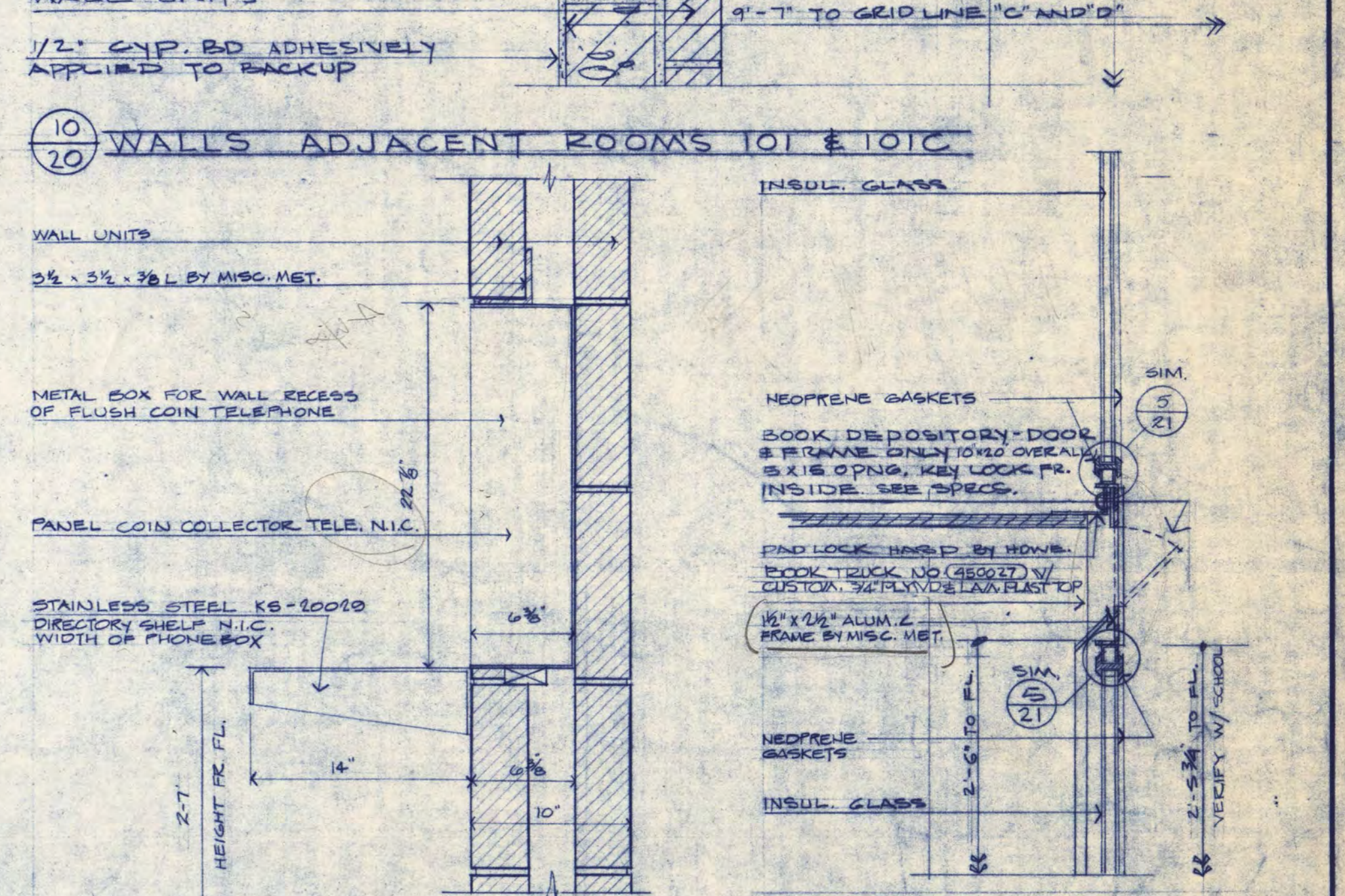
2 CORRIDOR-ADJACENT FIRST FLOOR OPENINGS



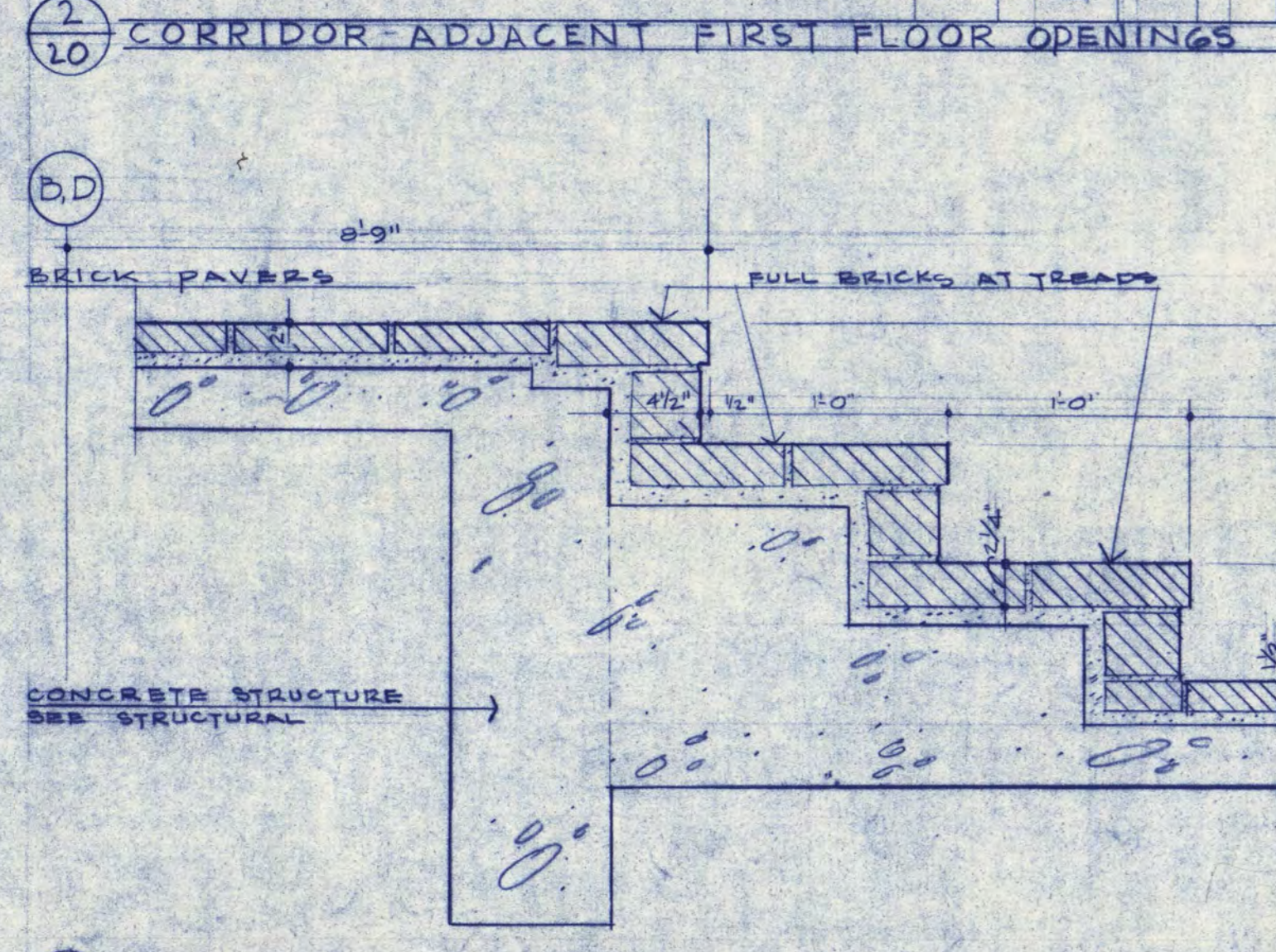
5 HORIZONTAL SECTION AT ENTRANCES TO CLASSROOM 123



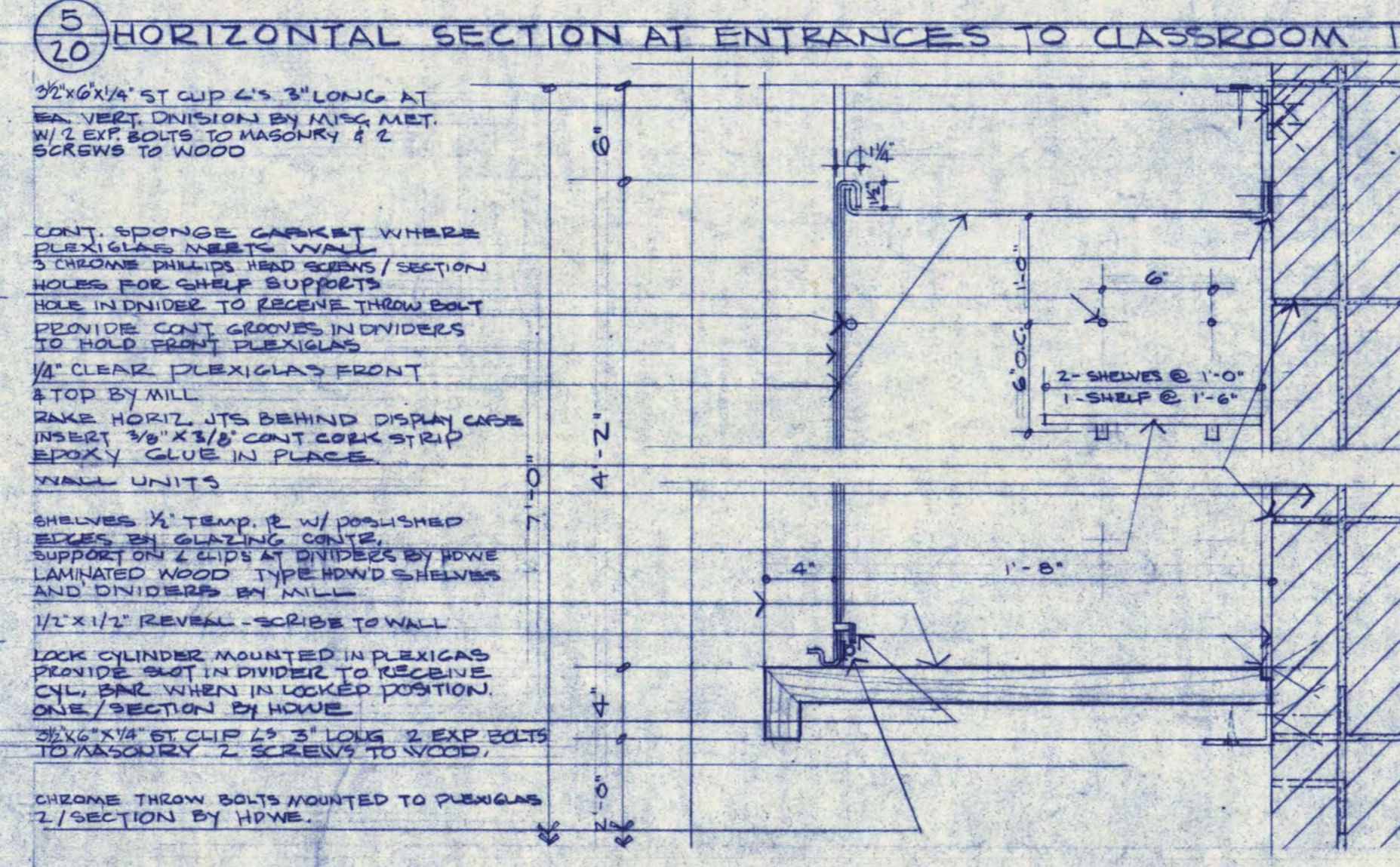
7 CLERESTORY JAMBS AT COL., CLASSROOM 123



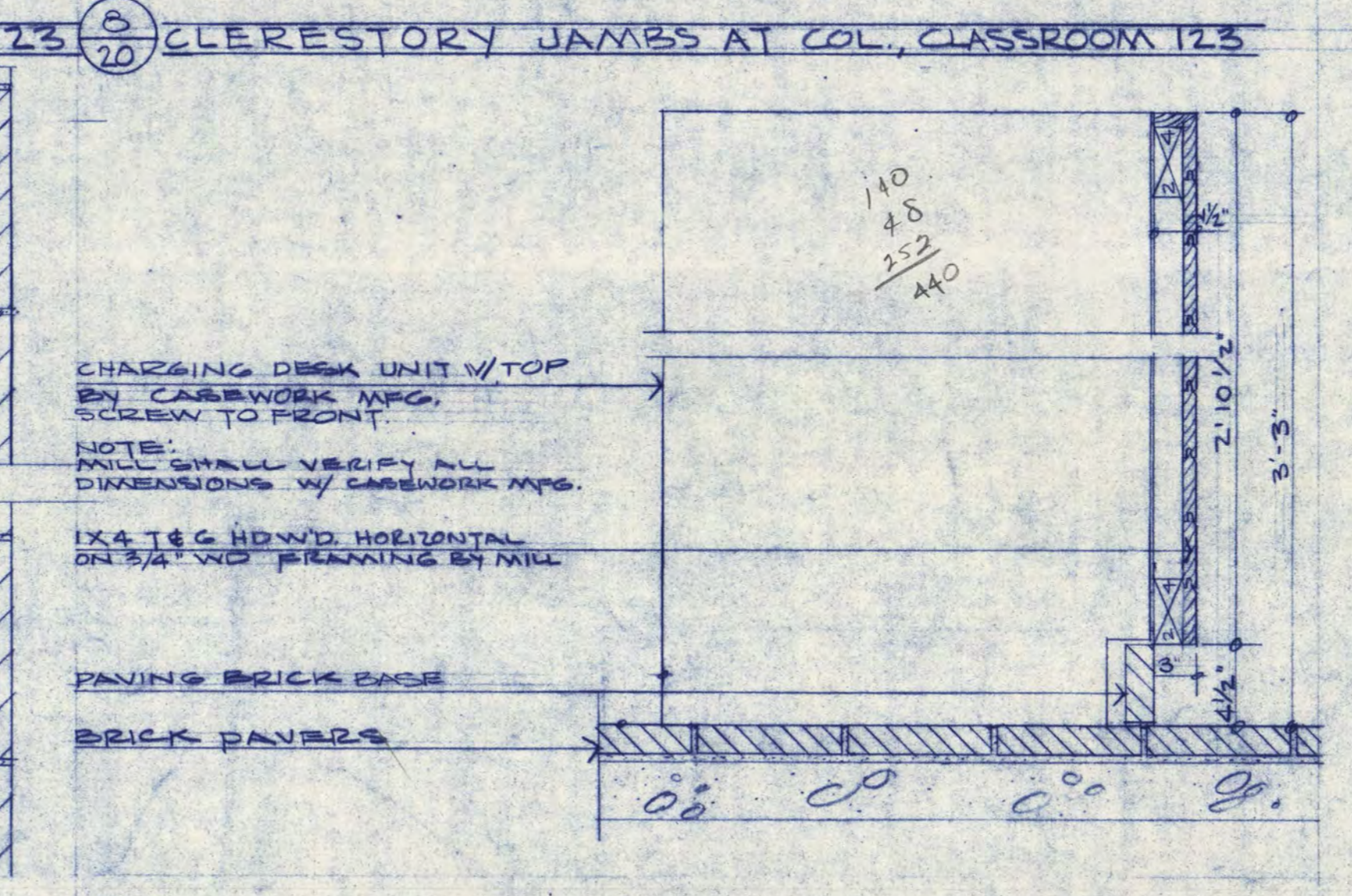
11 TELEPHONE CABINET



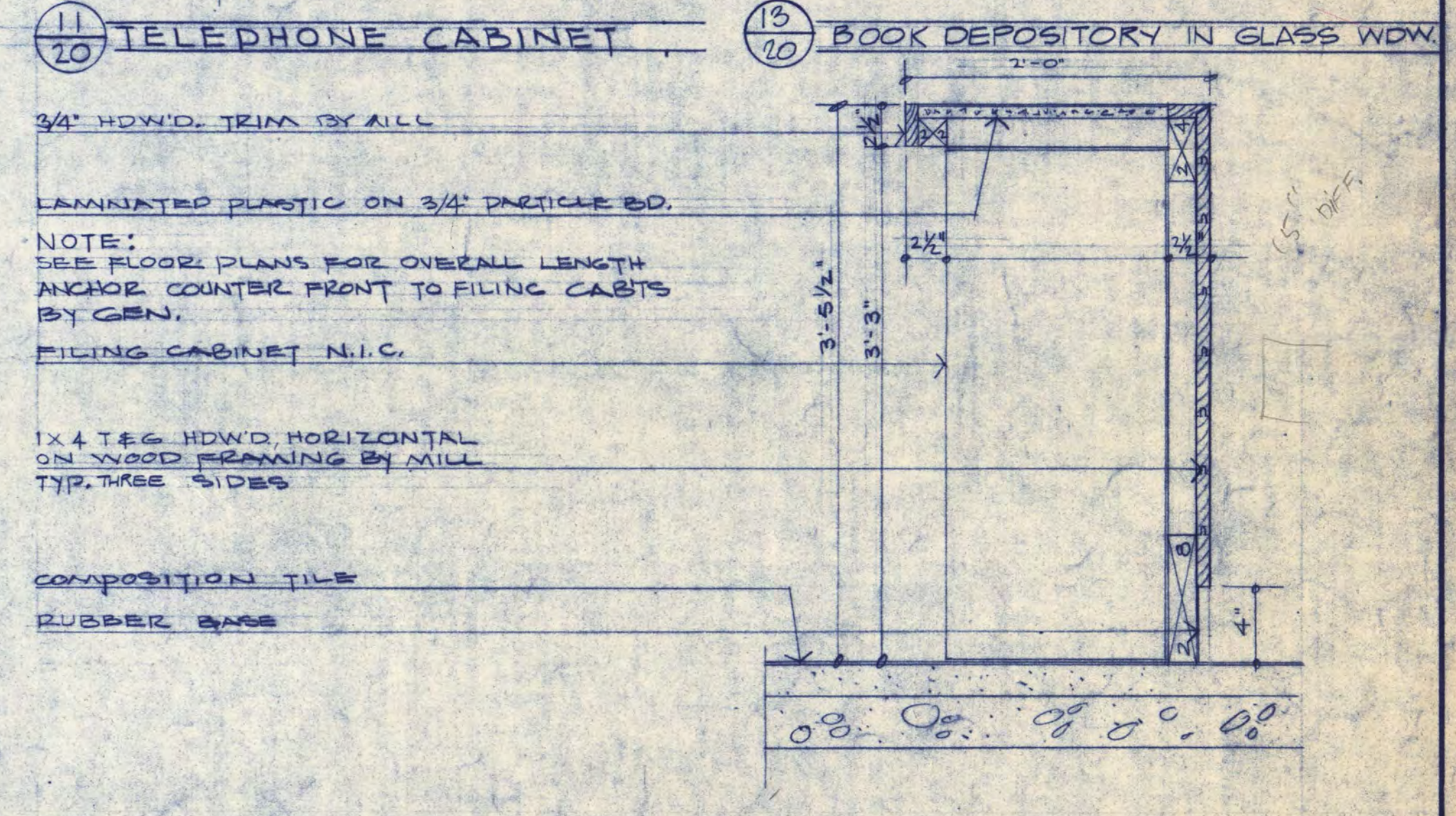
3 BRICK STAIRS



6 DISPLAY CASE - NORTH WALL ROOM 101

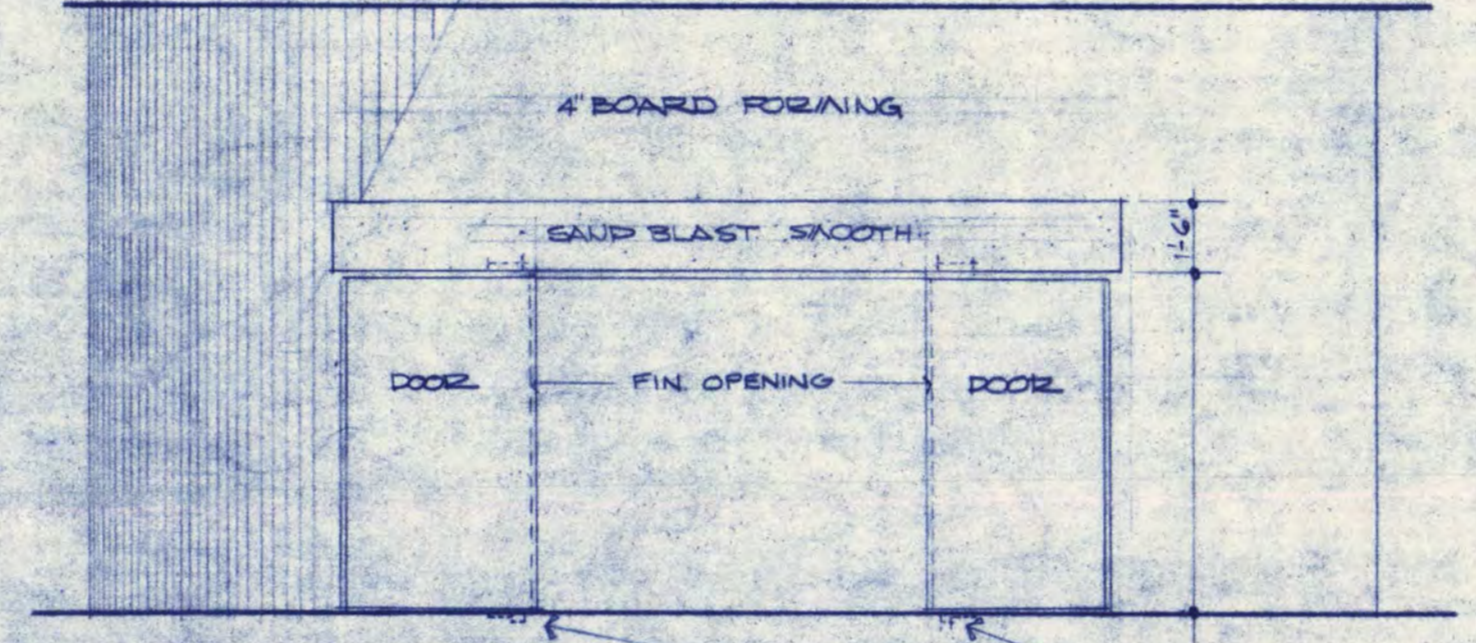
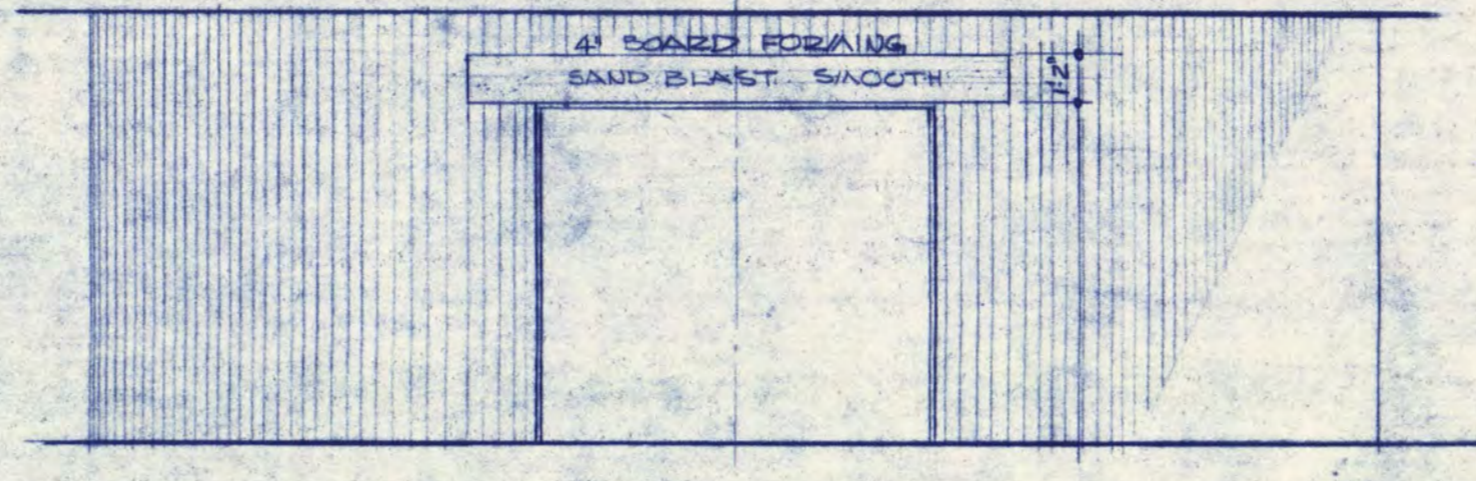
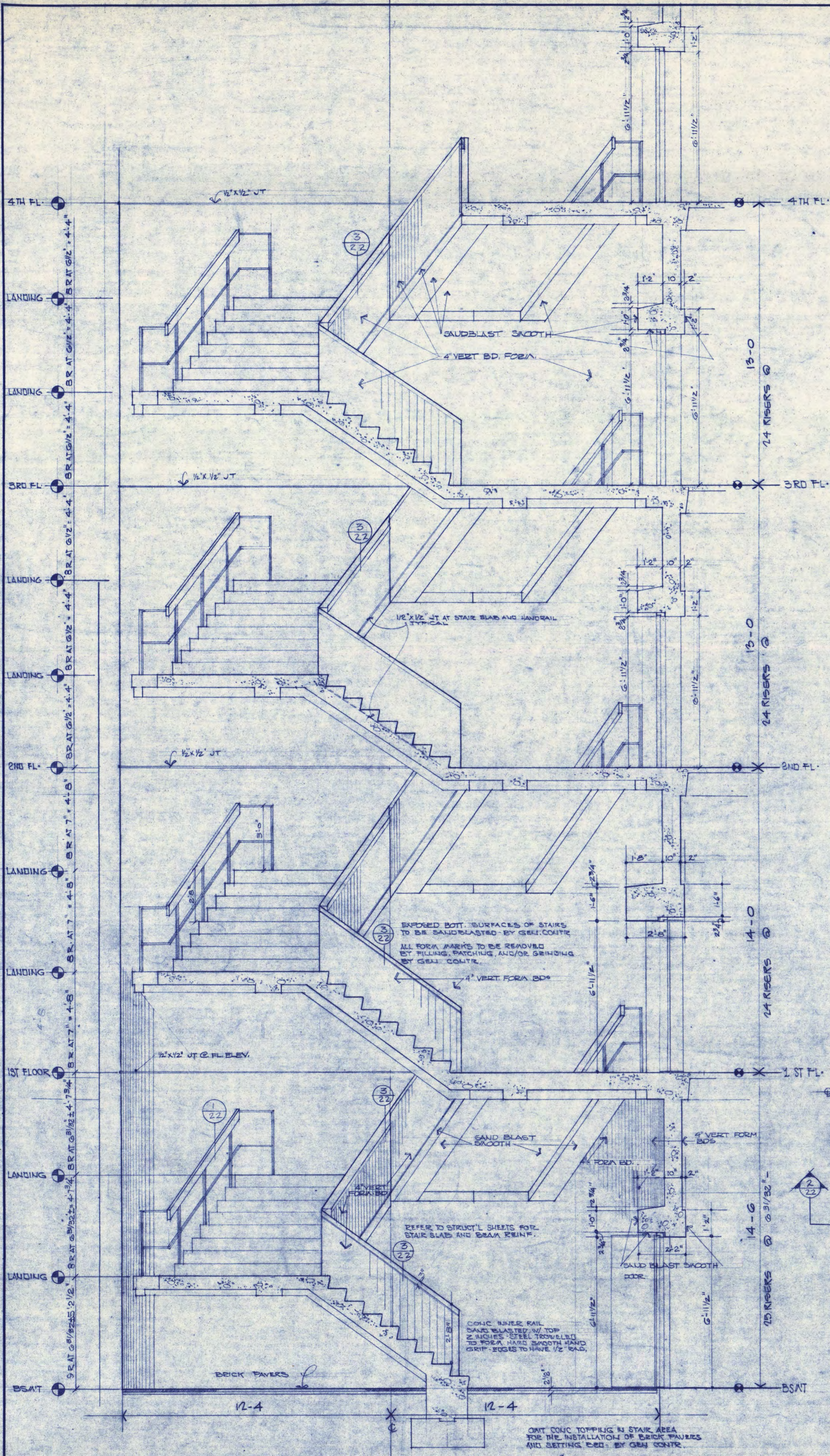


9 MAIN CHARGING DESK ROOM 101

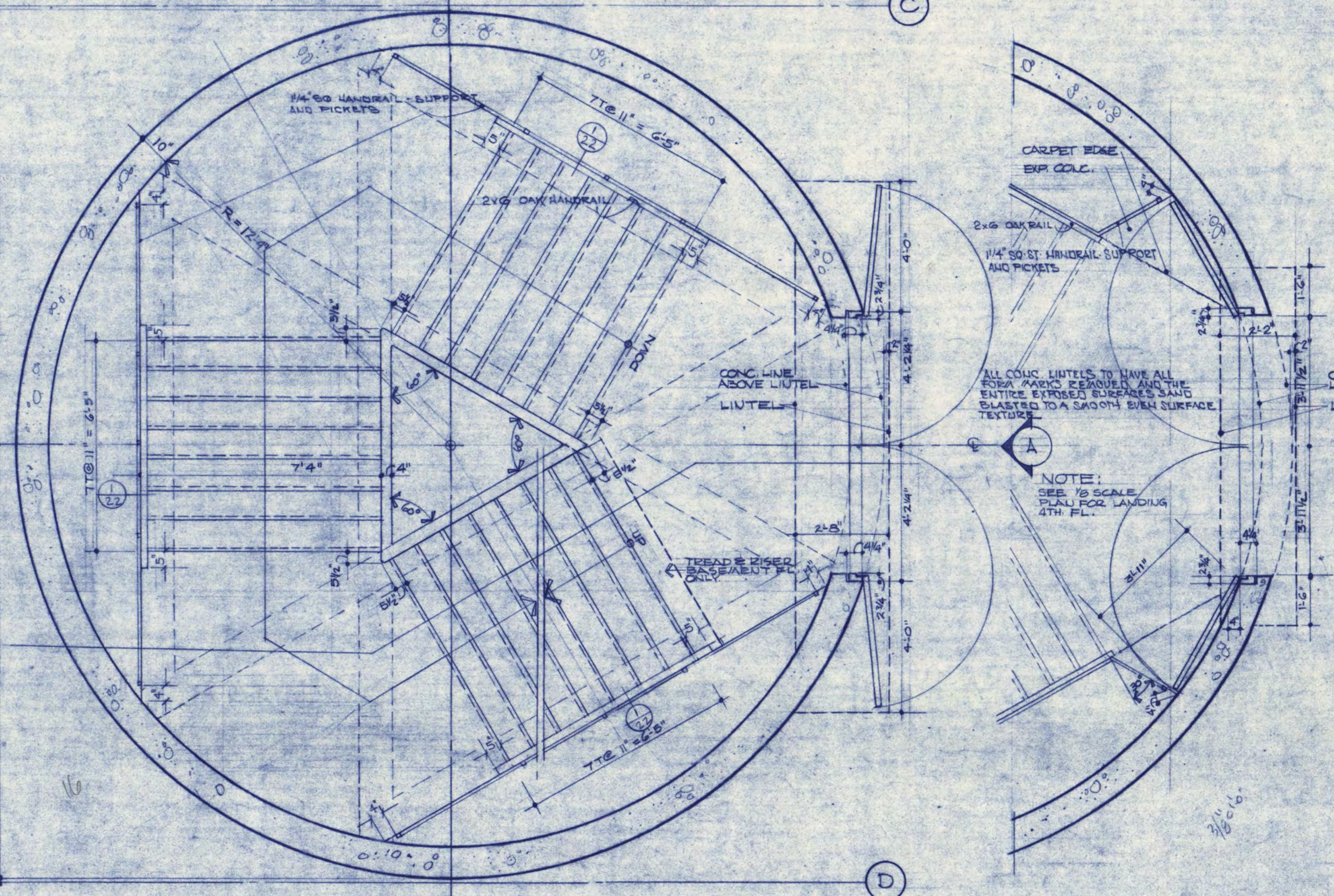


12 GENERAL OFFICE COUNTERS SECTION



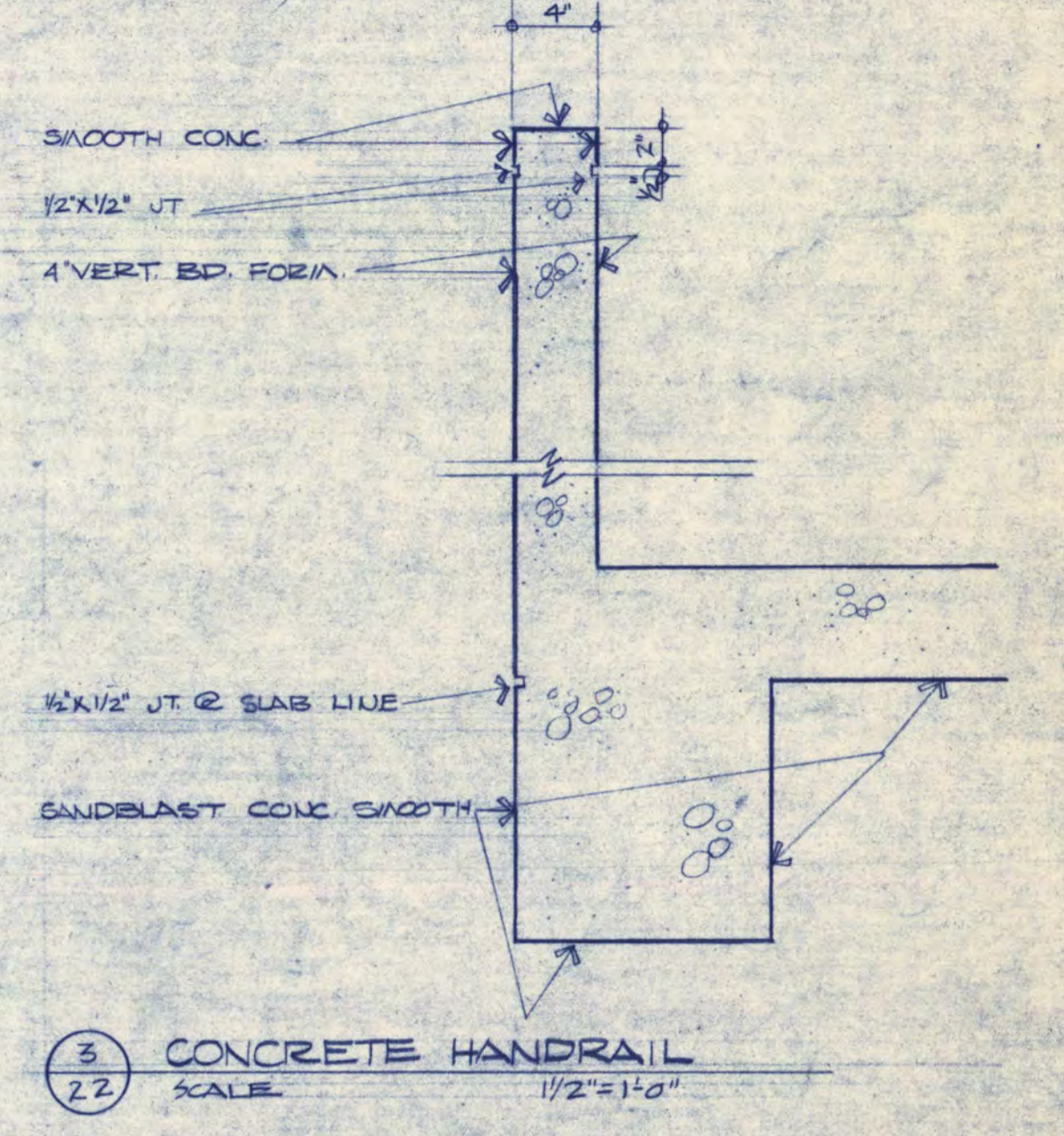


NOTE: GENERAL CONTRACTOR TO REVIEW HARDWARE REQUIREMENTS AND PROVIDE ALL REQ. RECESSES FOR THIS HARDWARE IN WALLS, FLOORS AND/OR CEILING. AT ALL FLOOR LEVELS. HARDWARE SUPPLIER TO PROVIDE GEN. CONTR. OF SIZE AND LOCATION OF RECESSES.

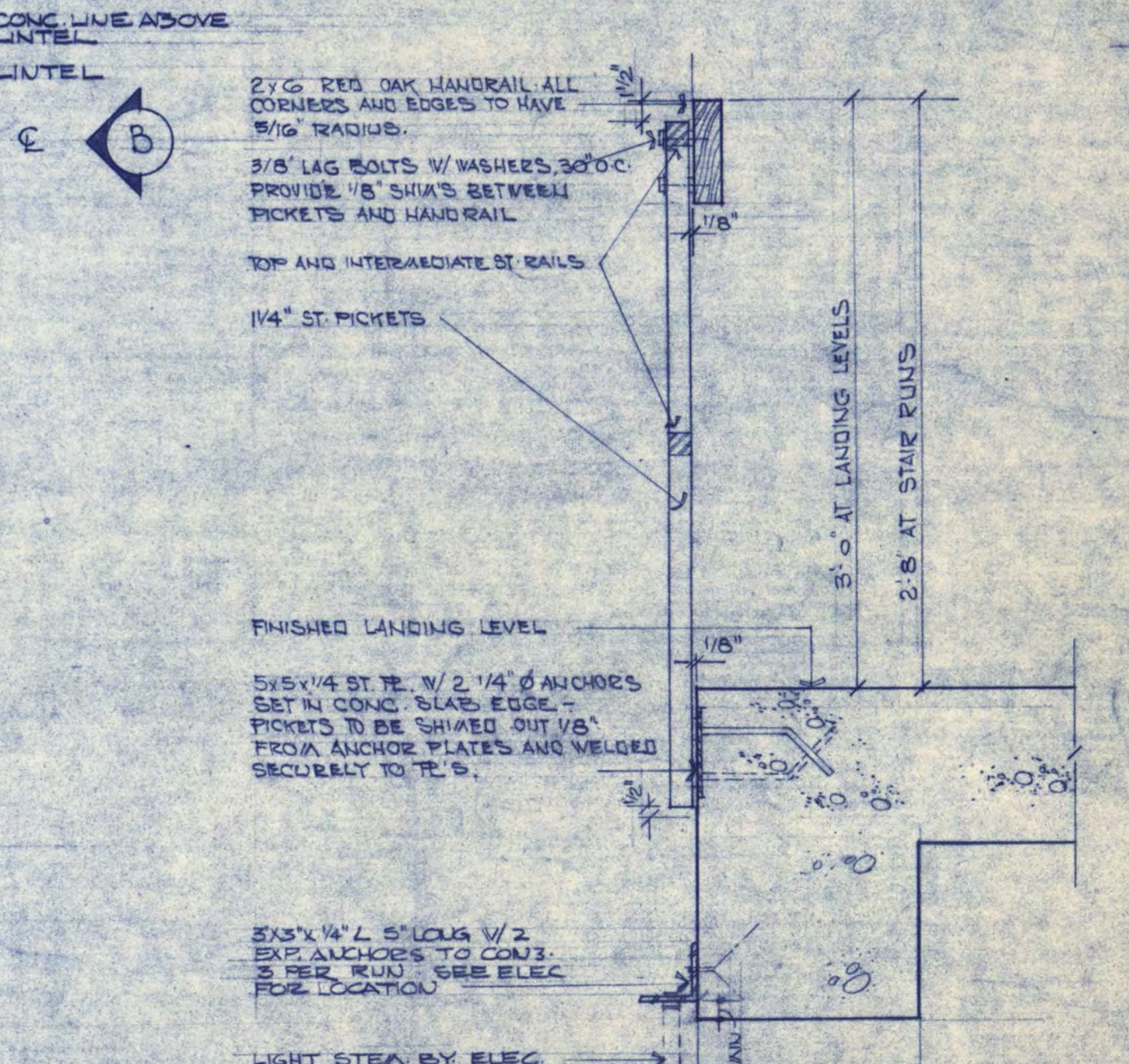


STAIR 'A' FIRST FLOOR PLAN  
3/8" = 1'-0"

STAIR 'A' PARTIAL FLOOR PLAN  
BSMT, 2ND, 3RD, 4TH

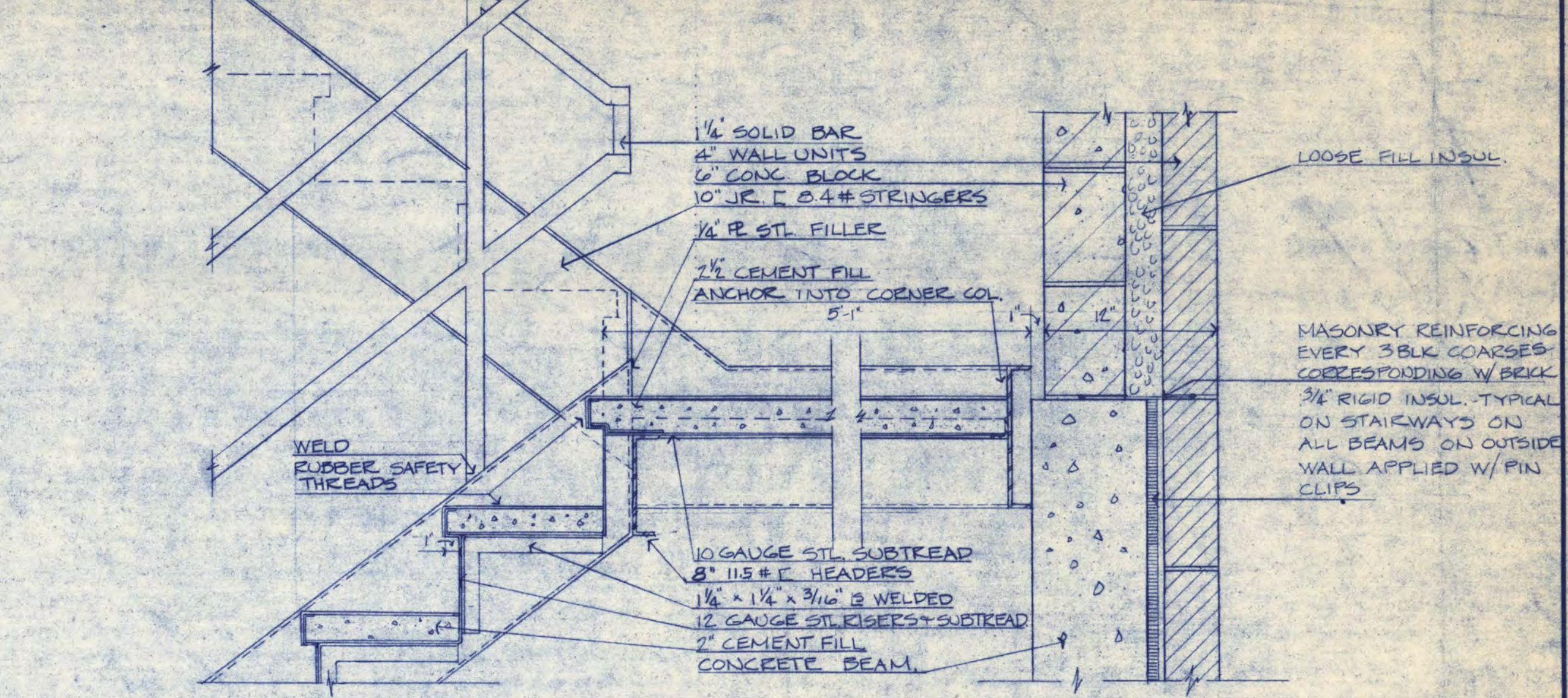
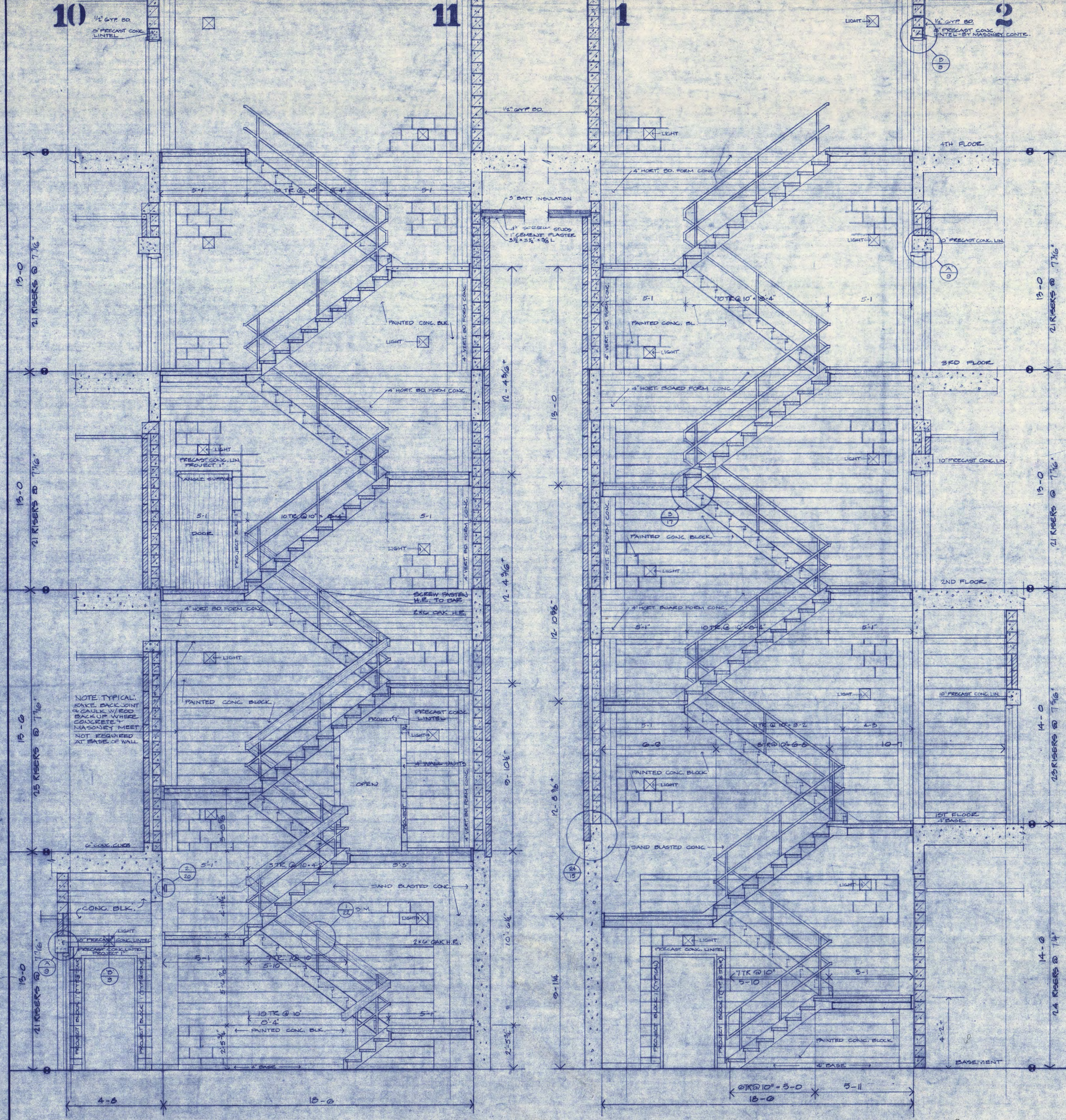


CONCRETE HANDRAIL  
SCALE: 1/2" = 1'-0"

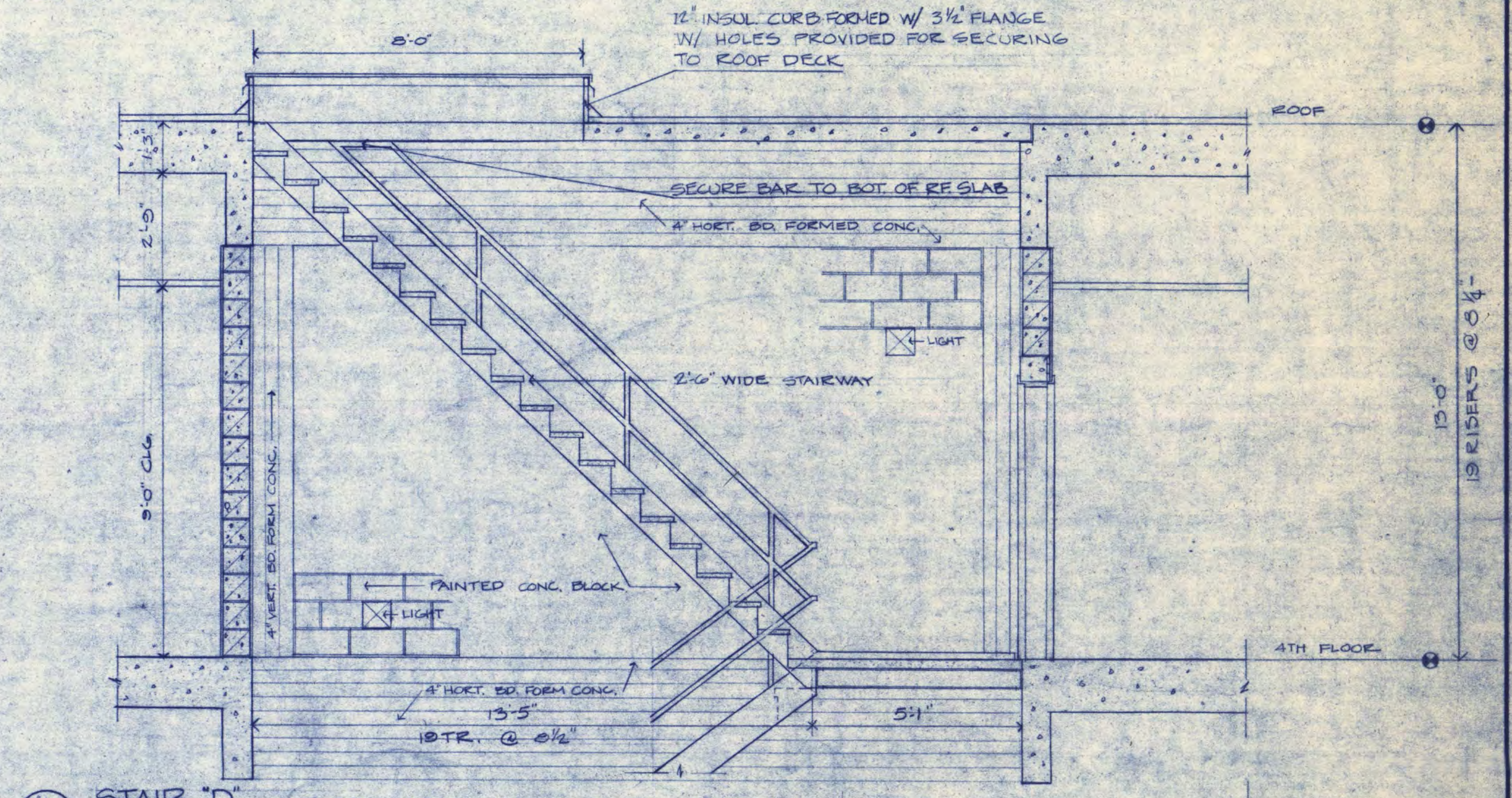


HAND RAIL DETAILS  
SCALE: 1/2" = 1'-0"

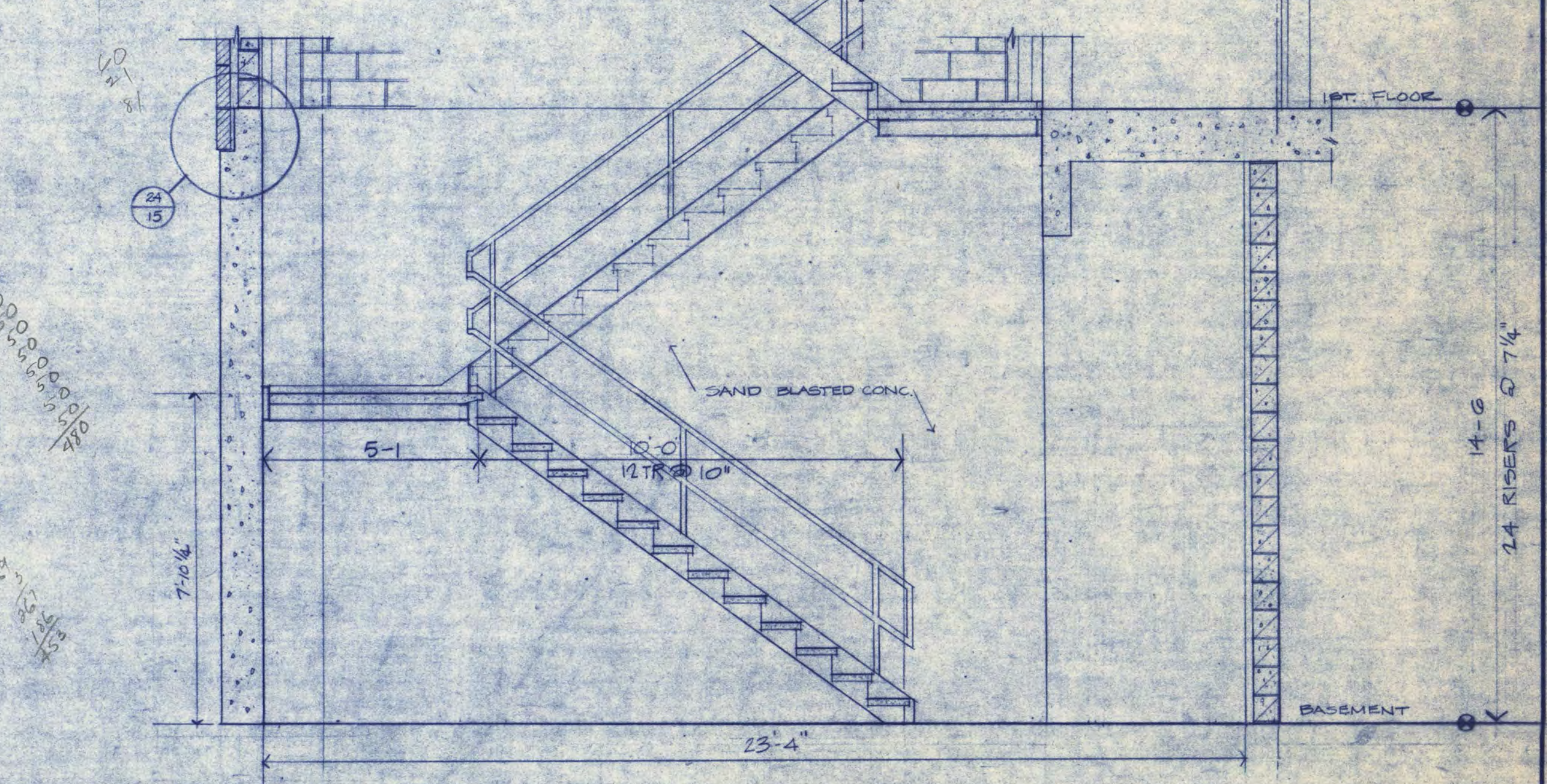
STAIR 'A'  
SCALE: 3/8" = 1'-0"



3 TYPICAL LANDING - OTHERS SIMILAR  
SCALE 1/4" = 1'-0"



4 STAIR 'D' FROM 4TH FLOOR TO ROOF  
SCALE 3/8" = 1'-0"



5 STAIR 'D' FROM FIRST FLOOR UP SEE STAIR 'E'  
SCALE 3/8" = 1'-0"

1 STAIR 'B' - STAIR 'C' SIMILAR  
SCALE 3/8" = 1'-0"

2 STAIR 'E' - STAIR 'D' SIMILAR FROM FIRST FLOOR UP  
SCALE 3/8" = 1'-0"

NOTE:  
ALL LIGHT FIXTURES SHOWN  
ARE BY ELEC.