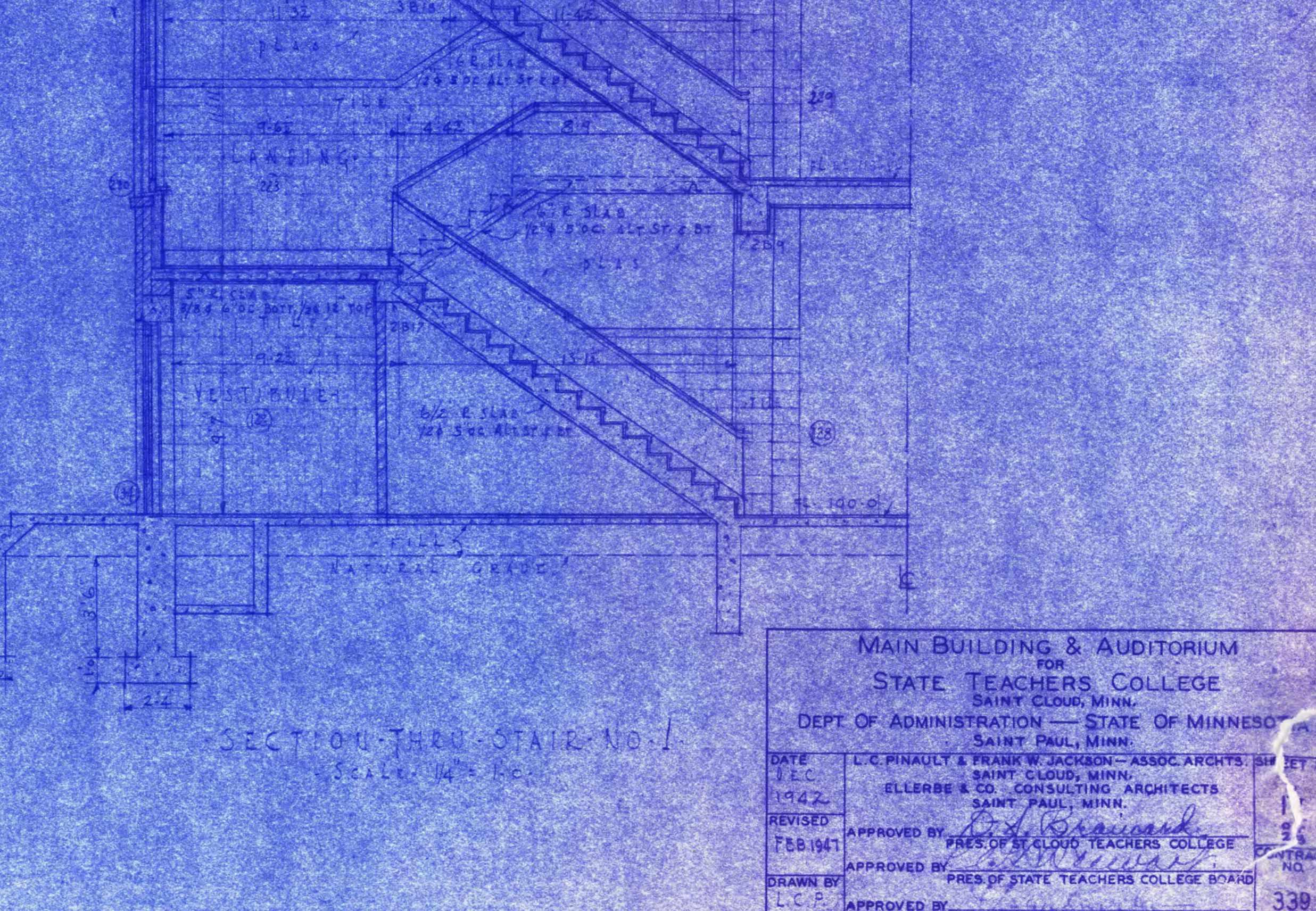
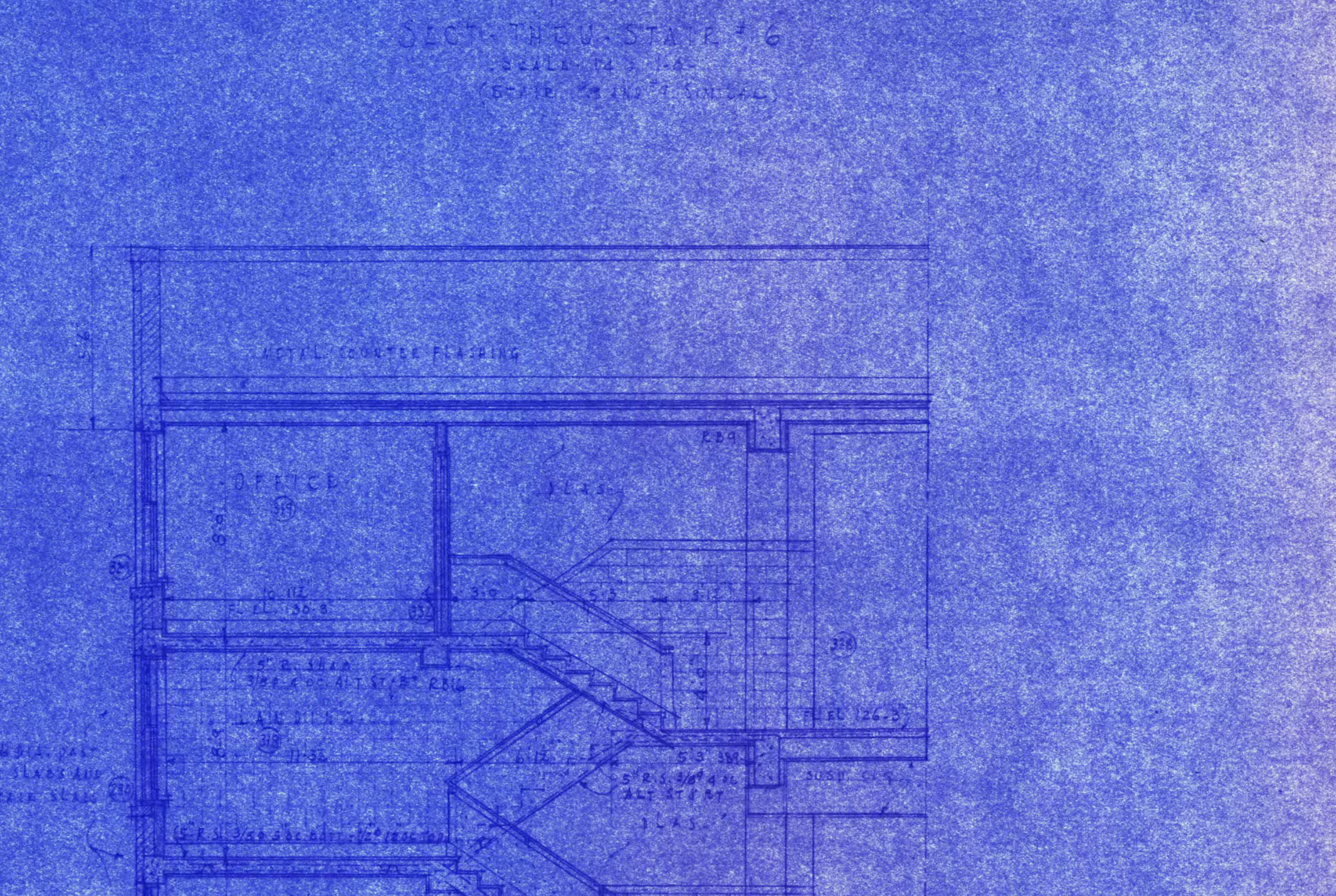
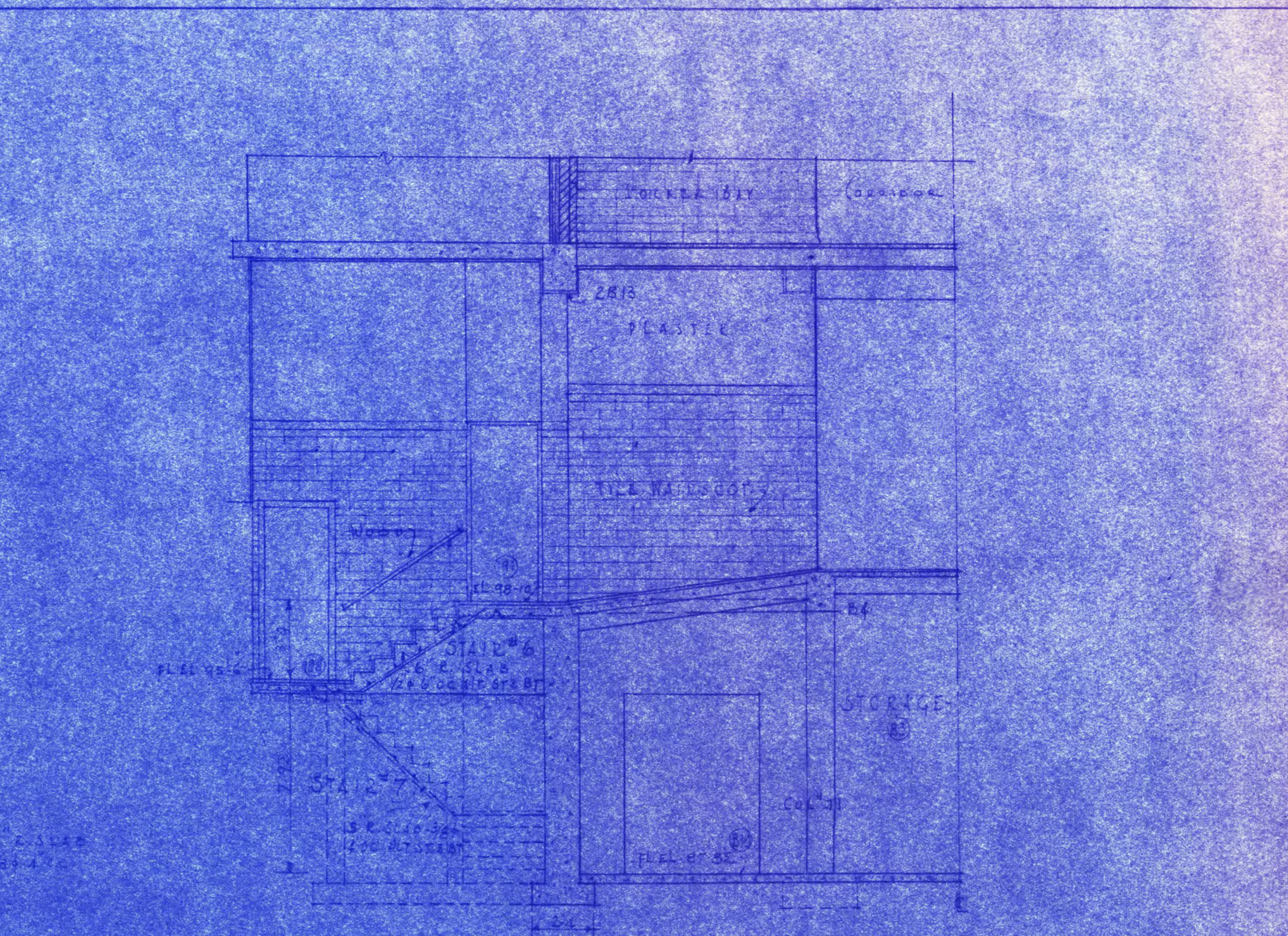
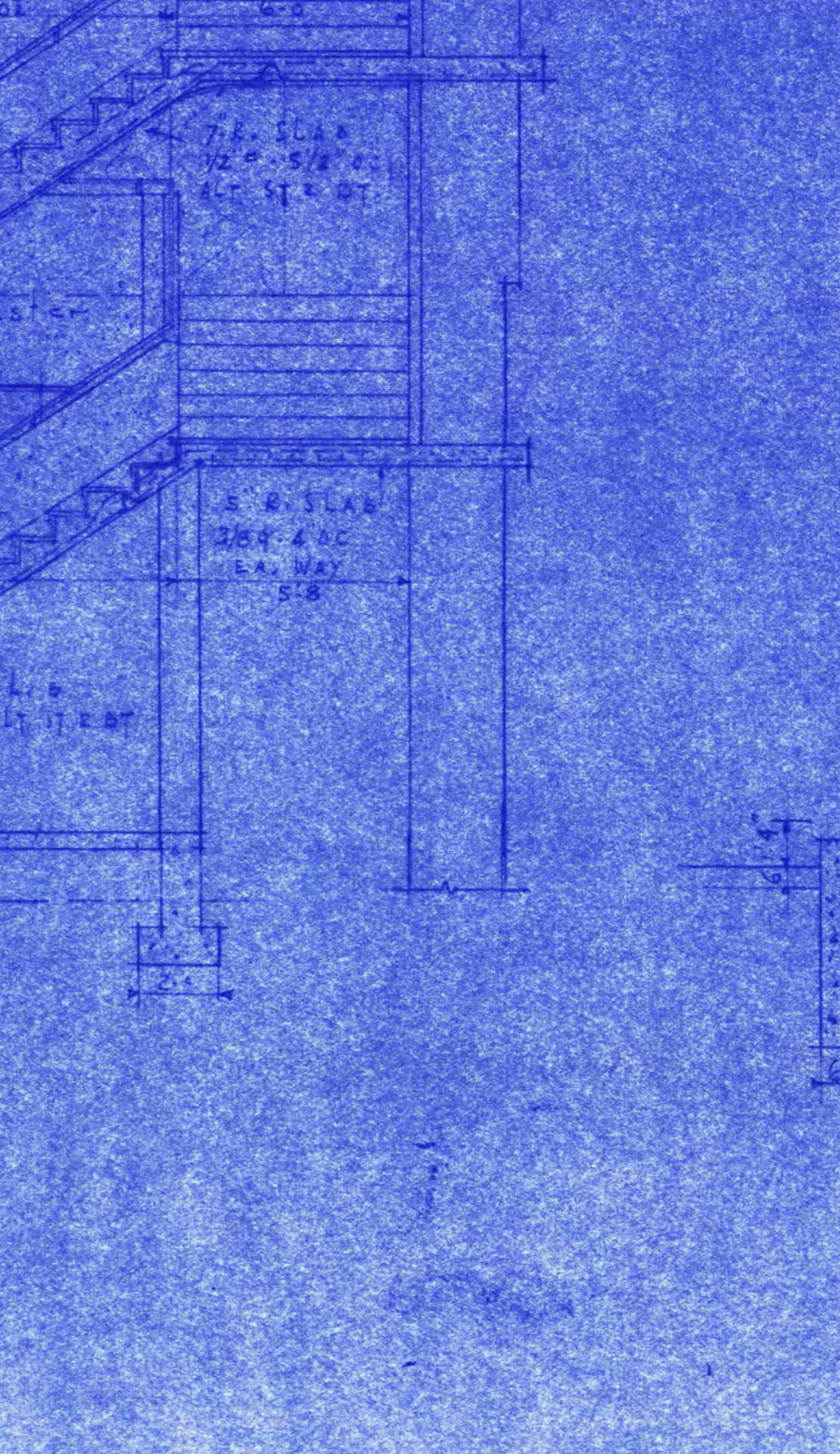
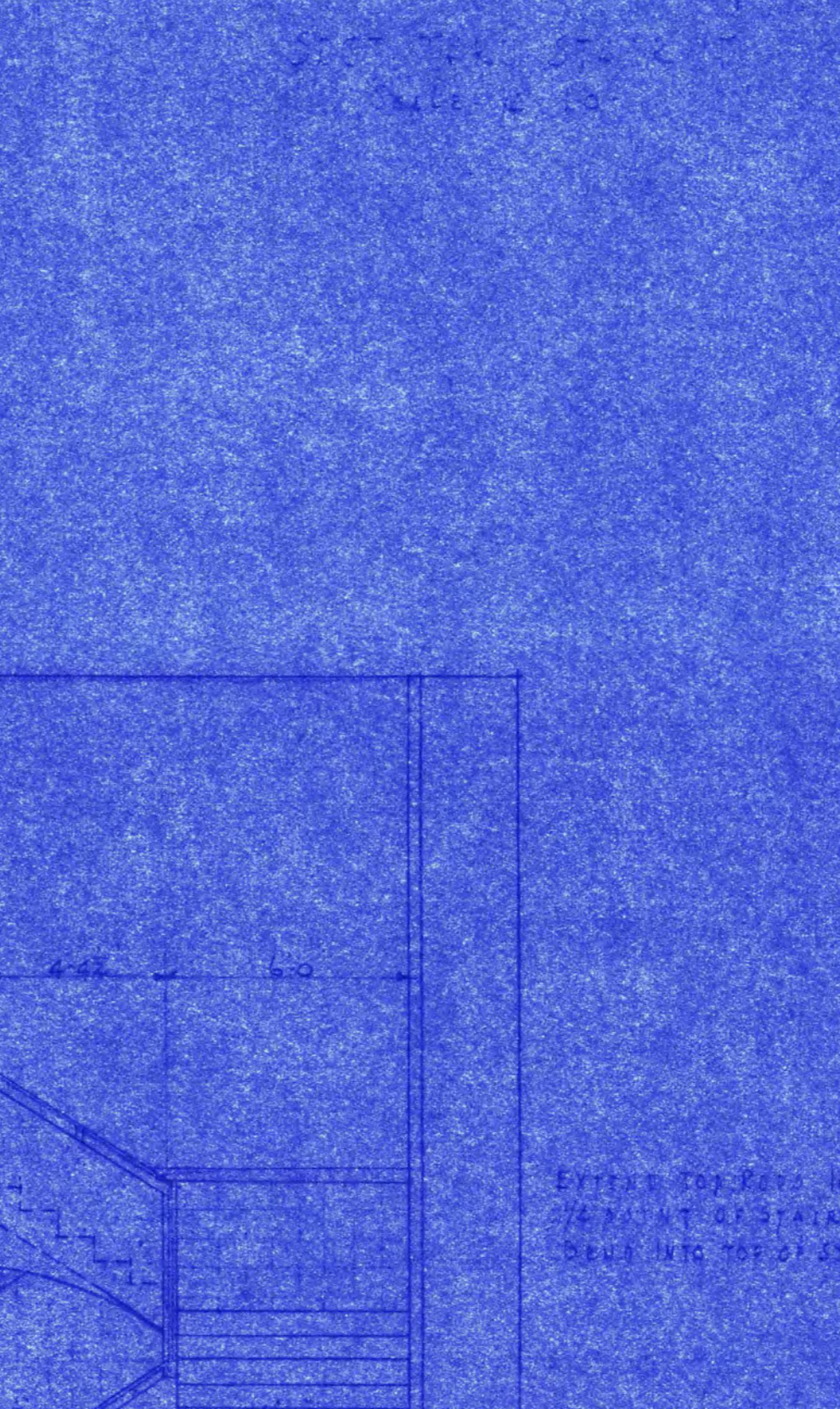
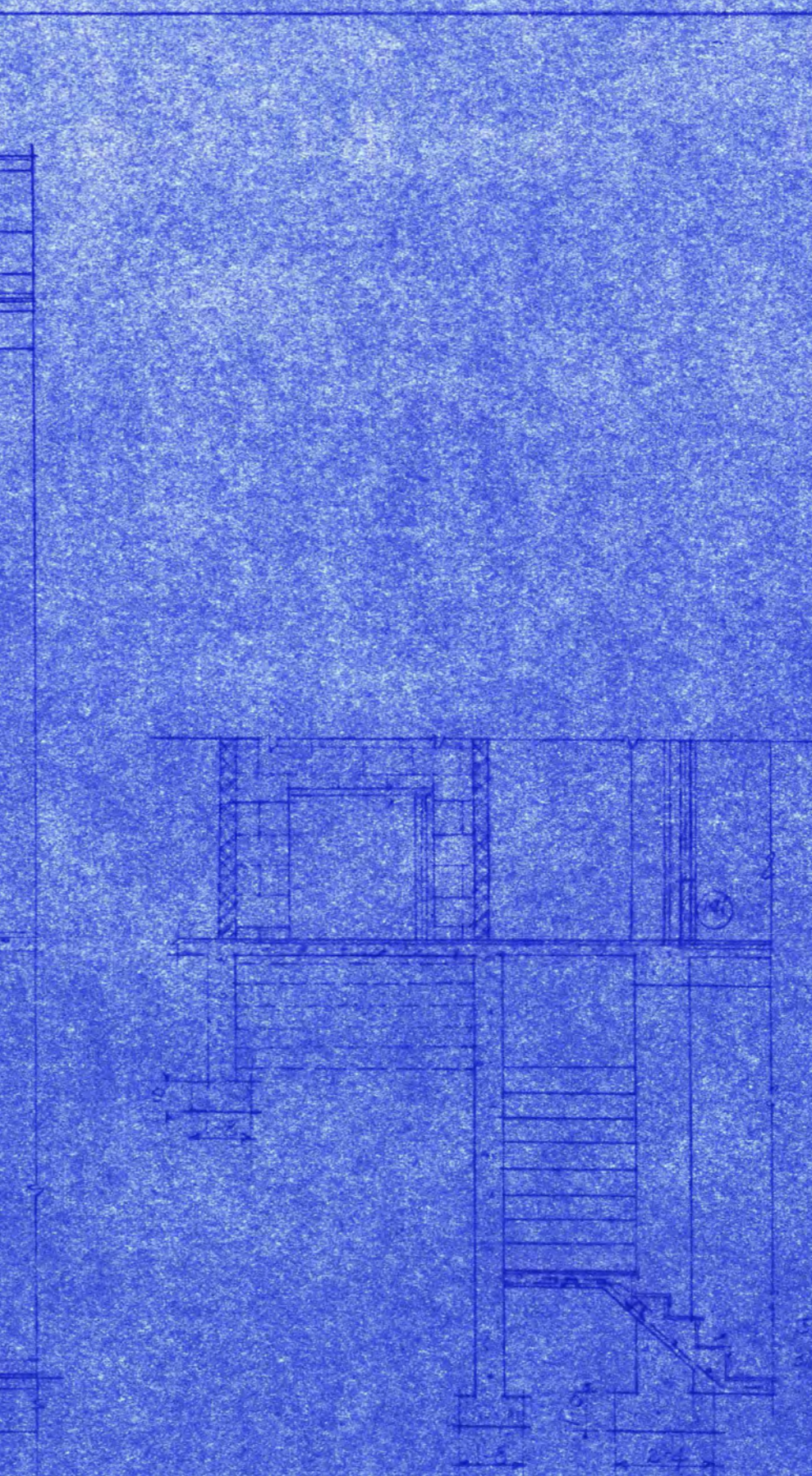
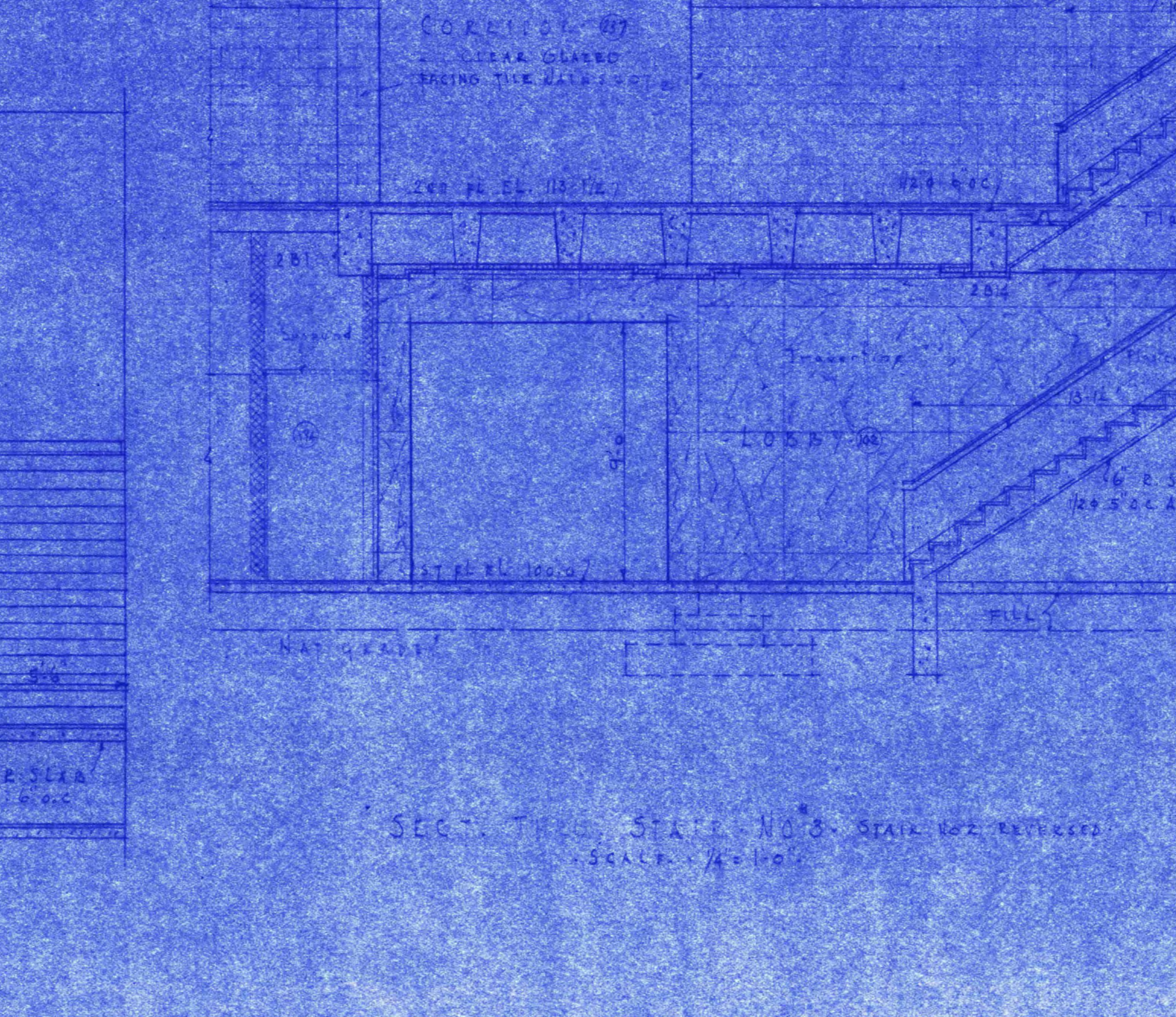
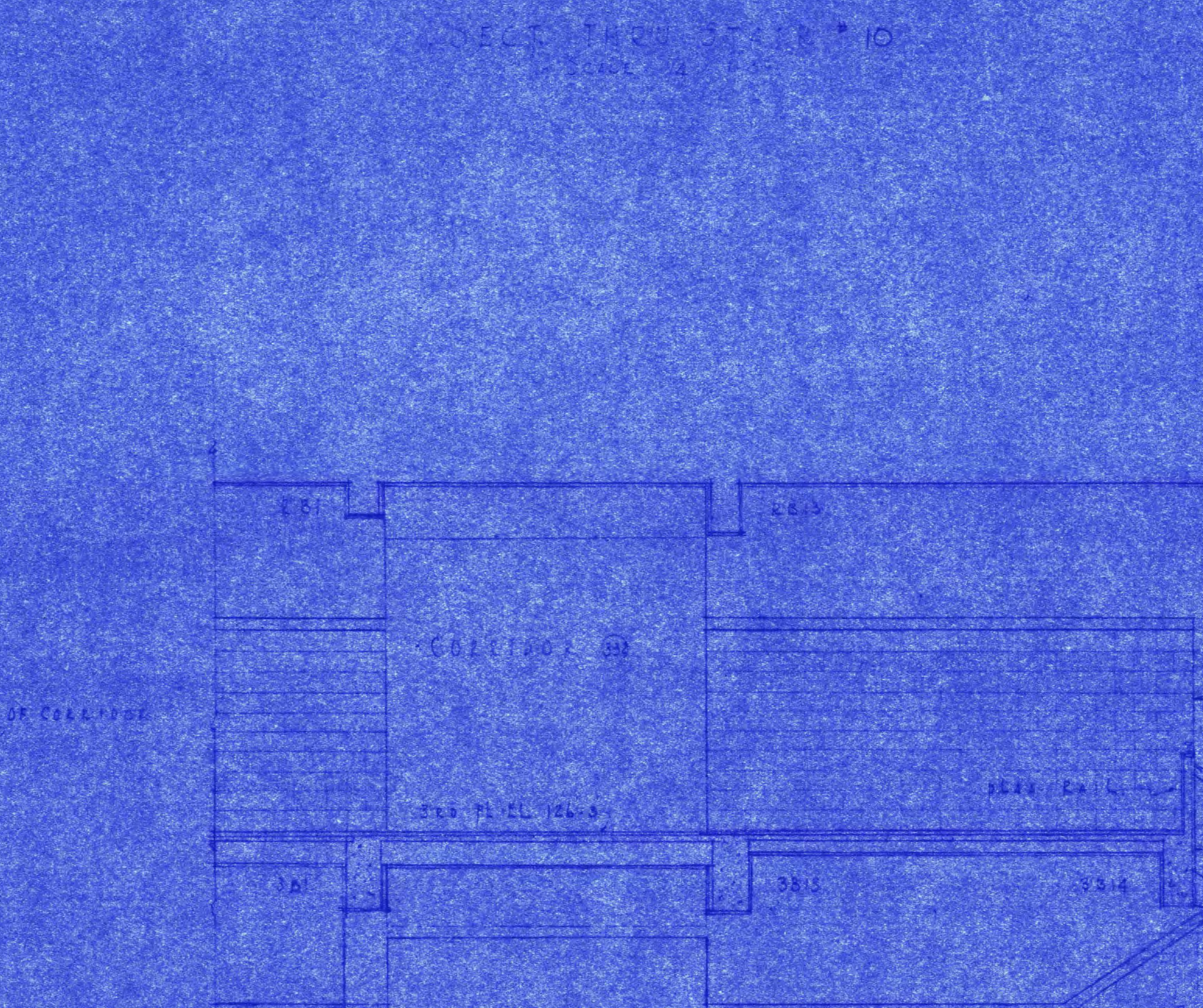
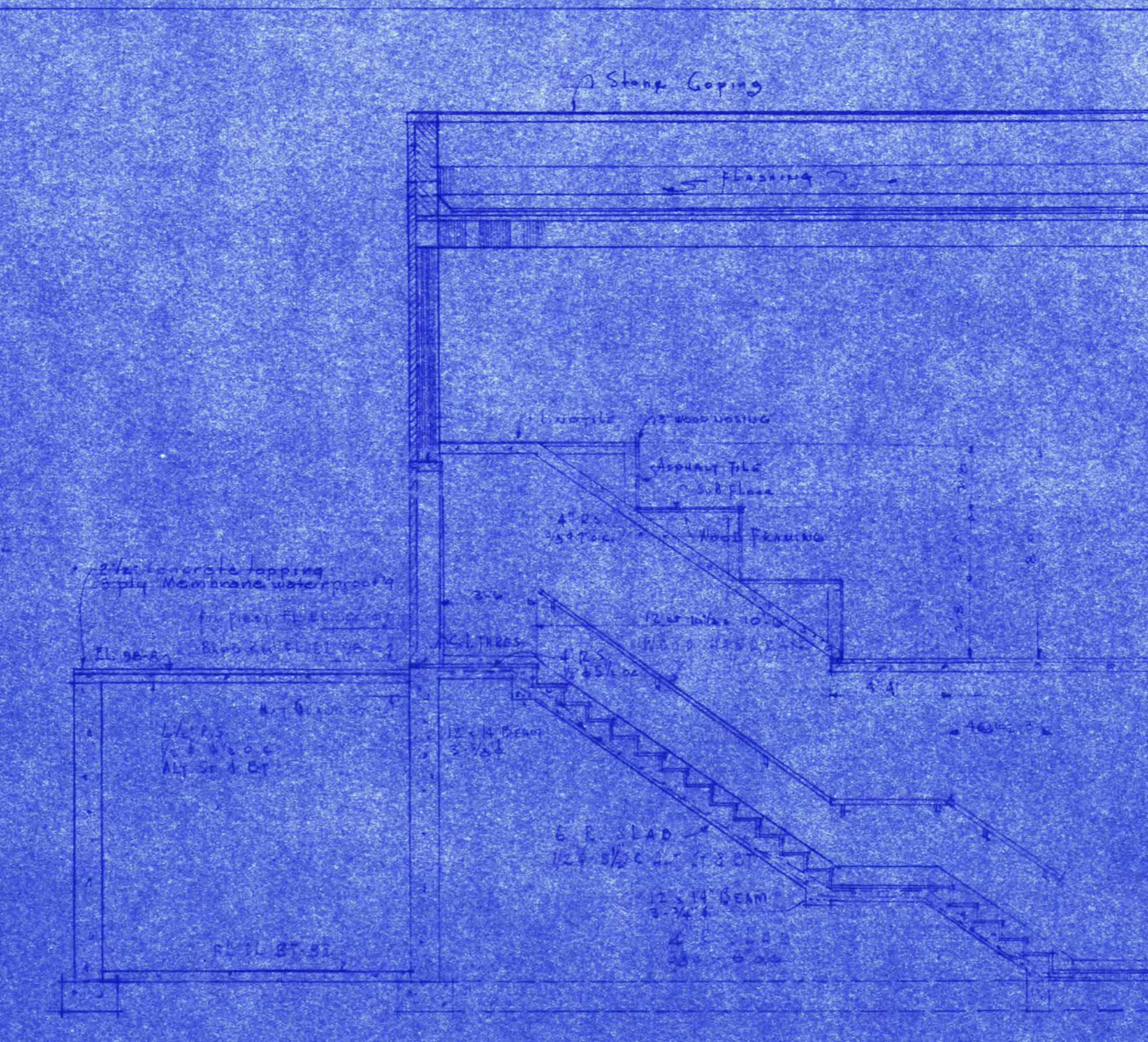
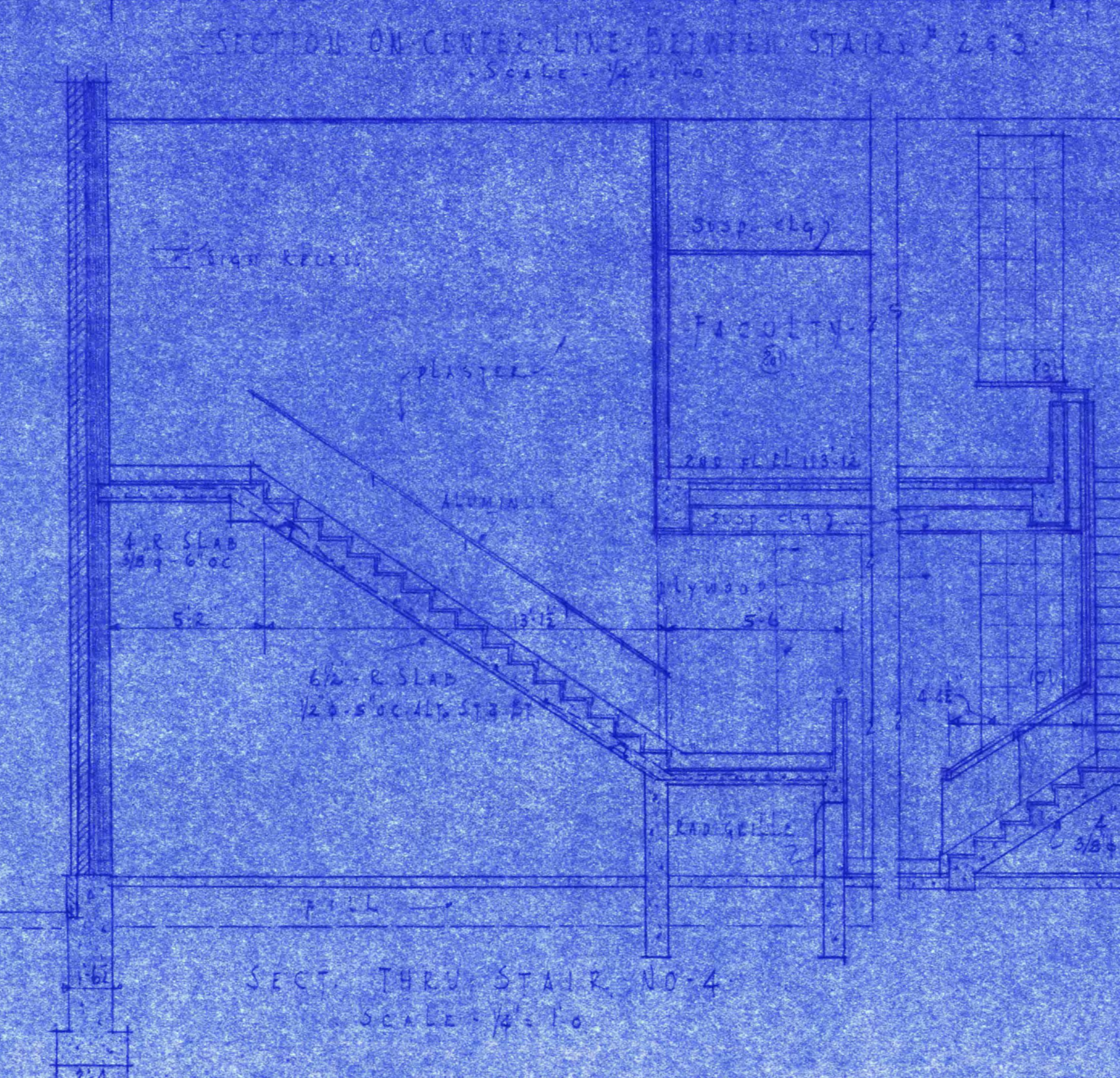
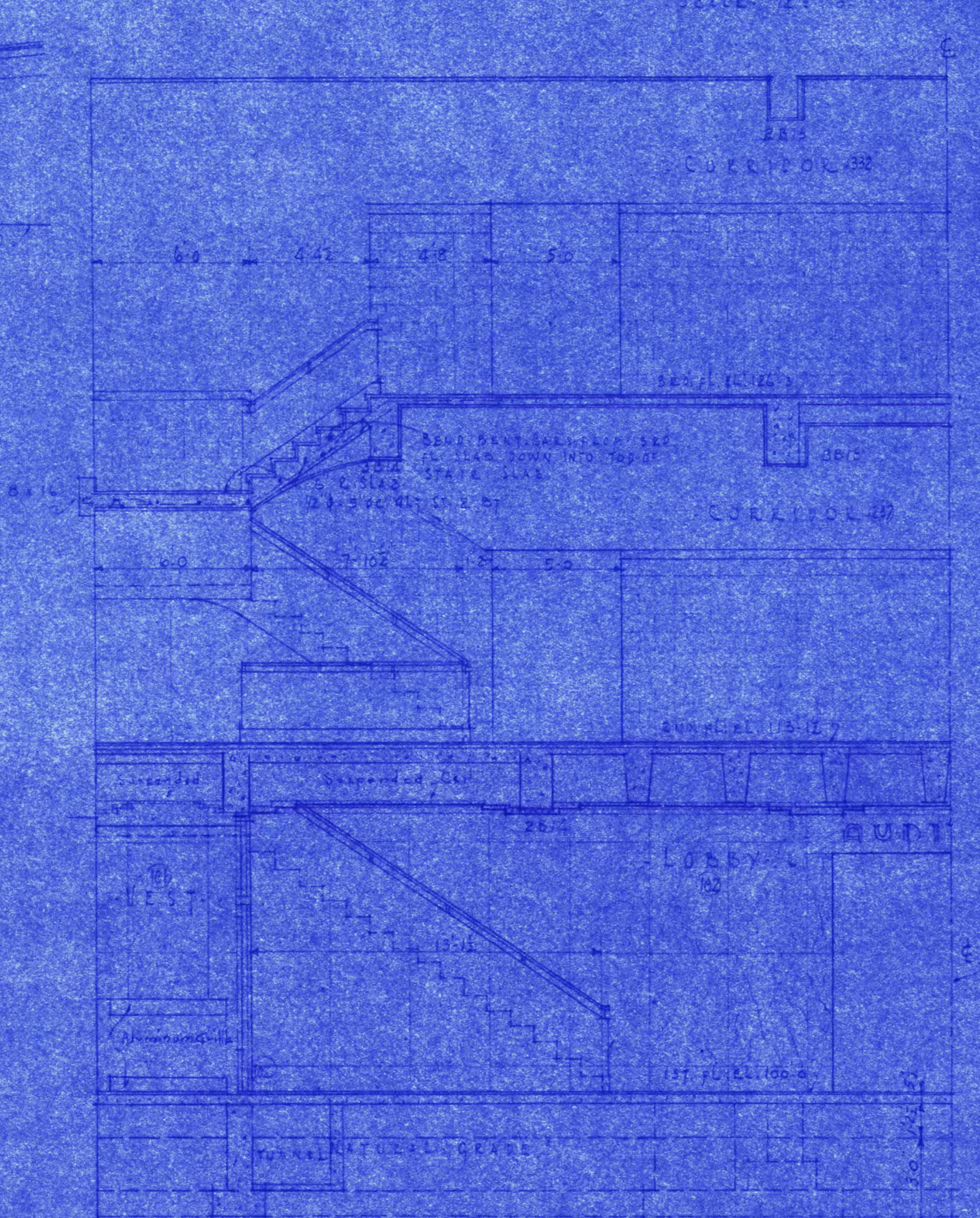
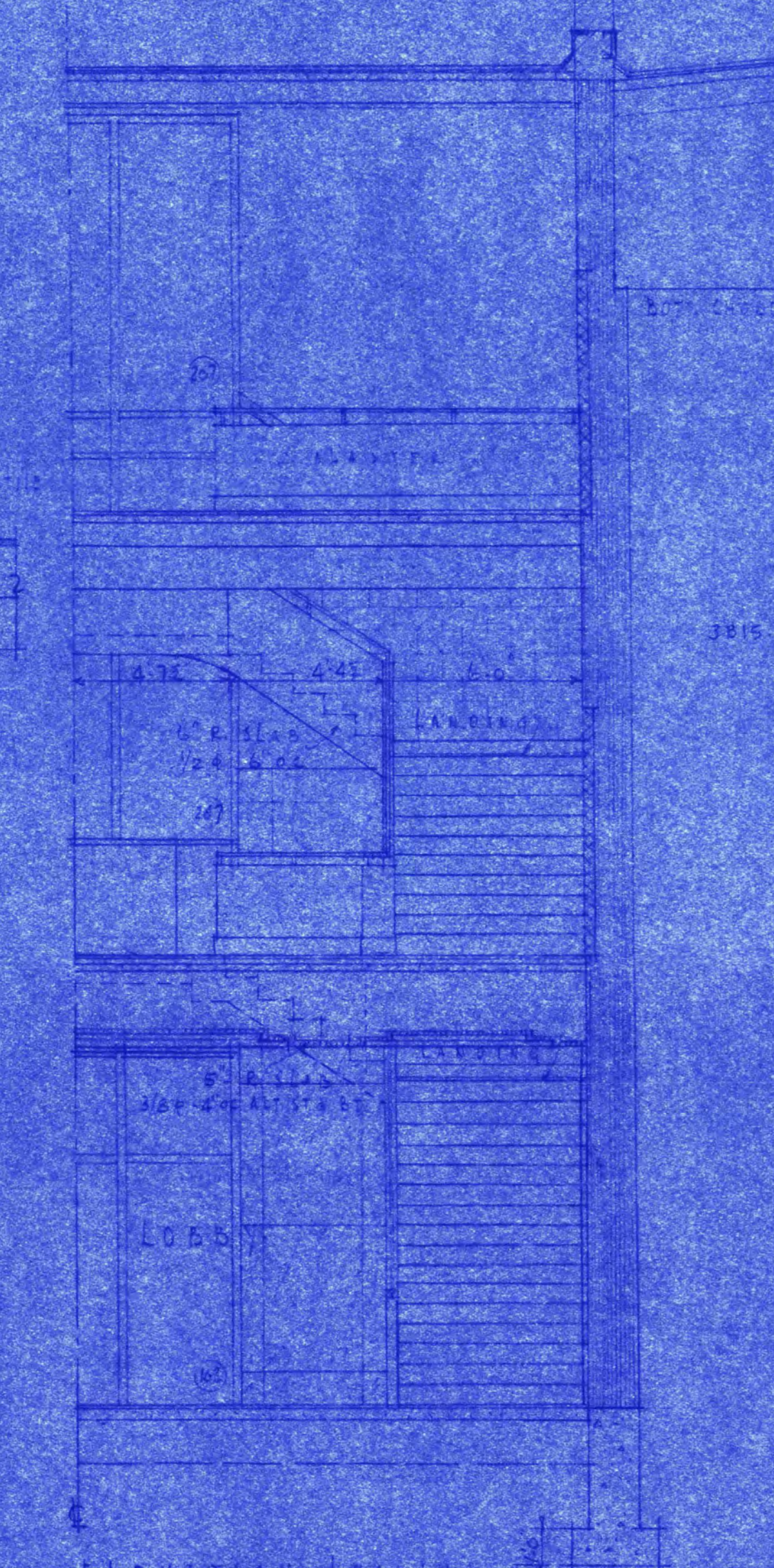
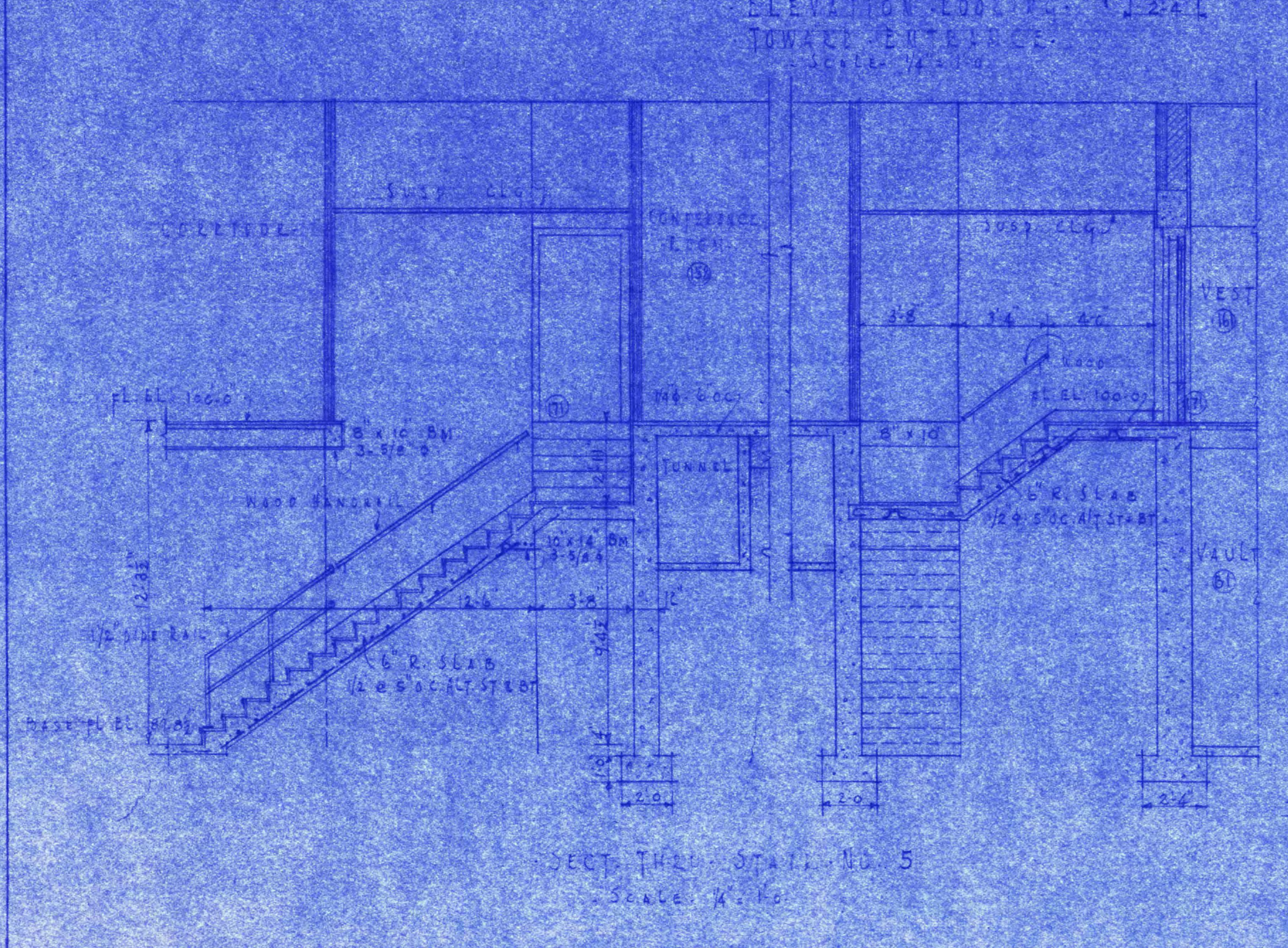
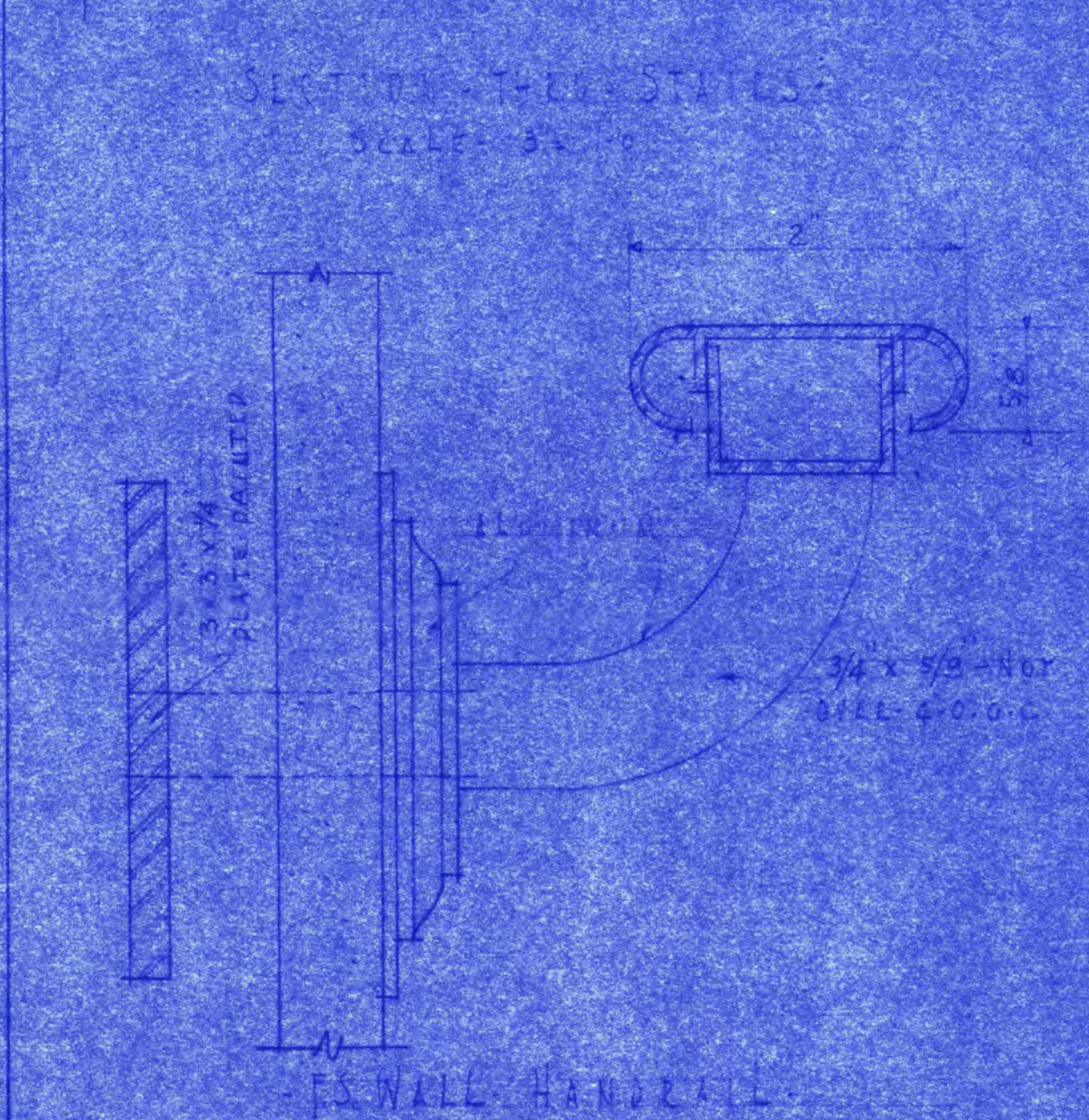
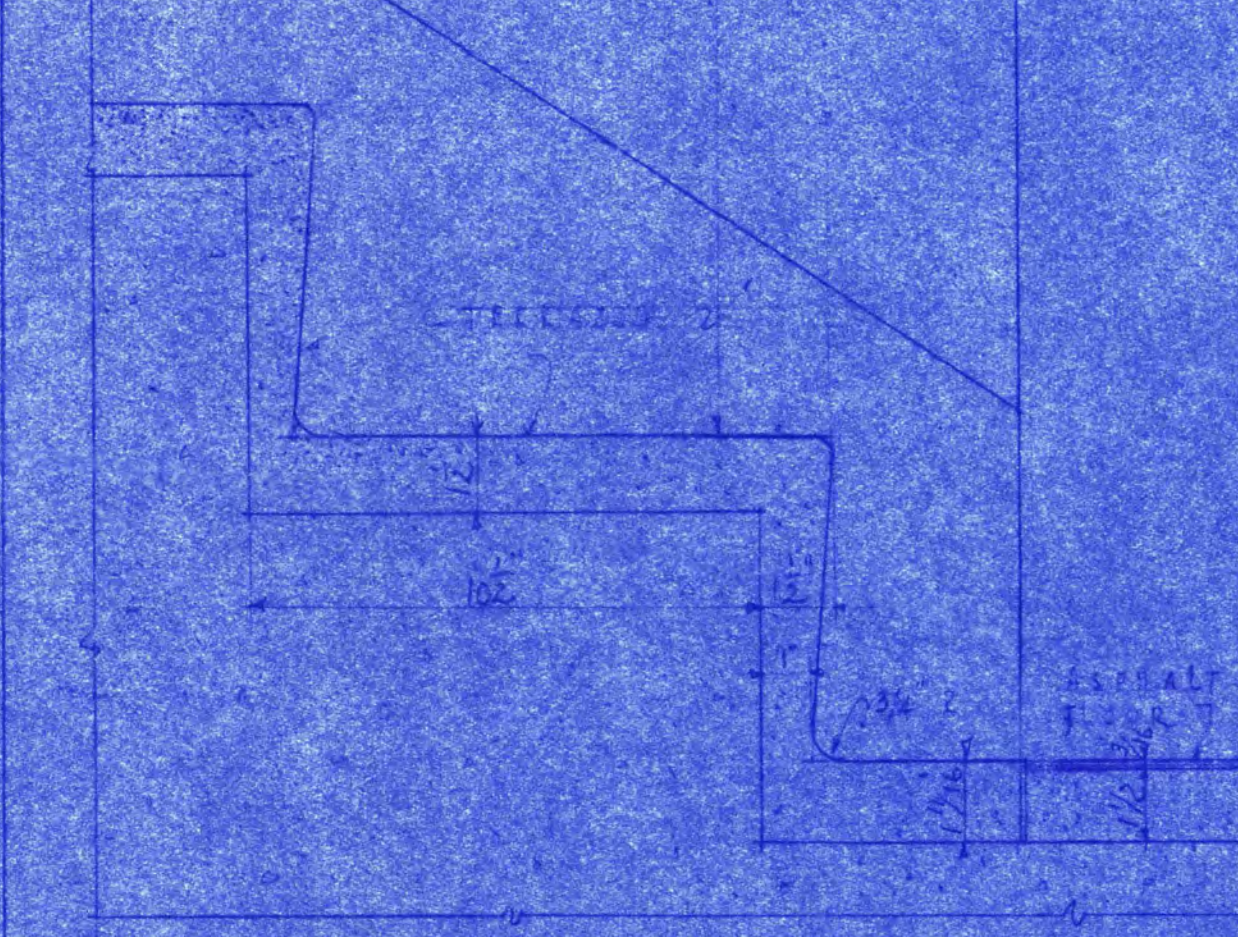
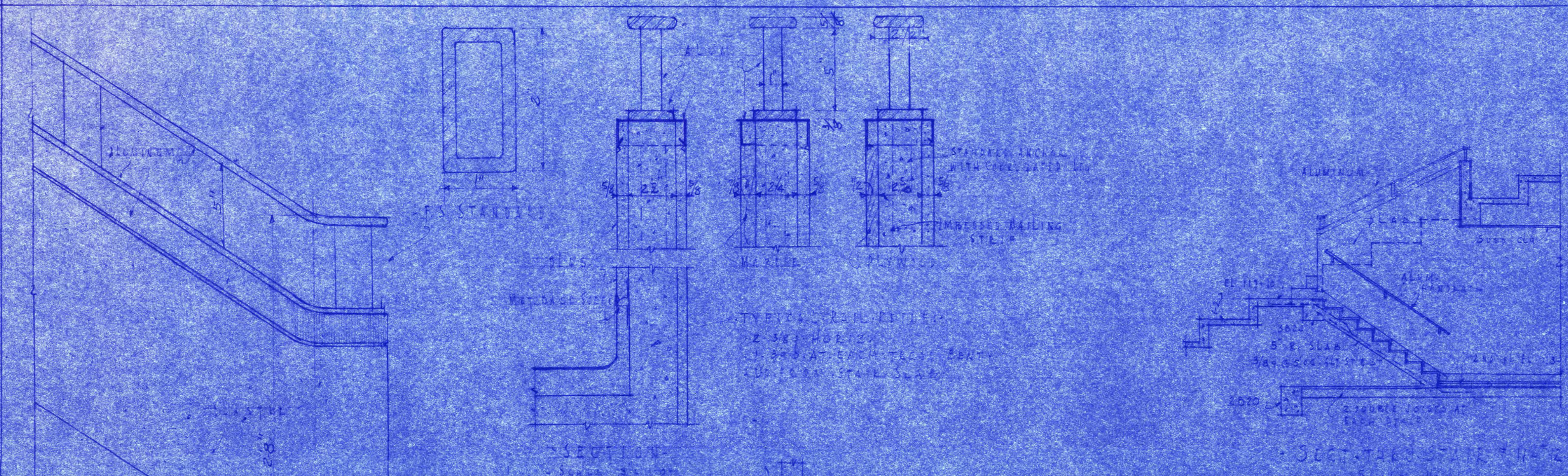
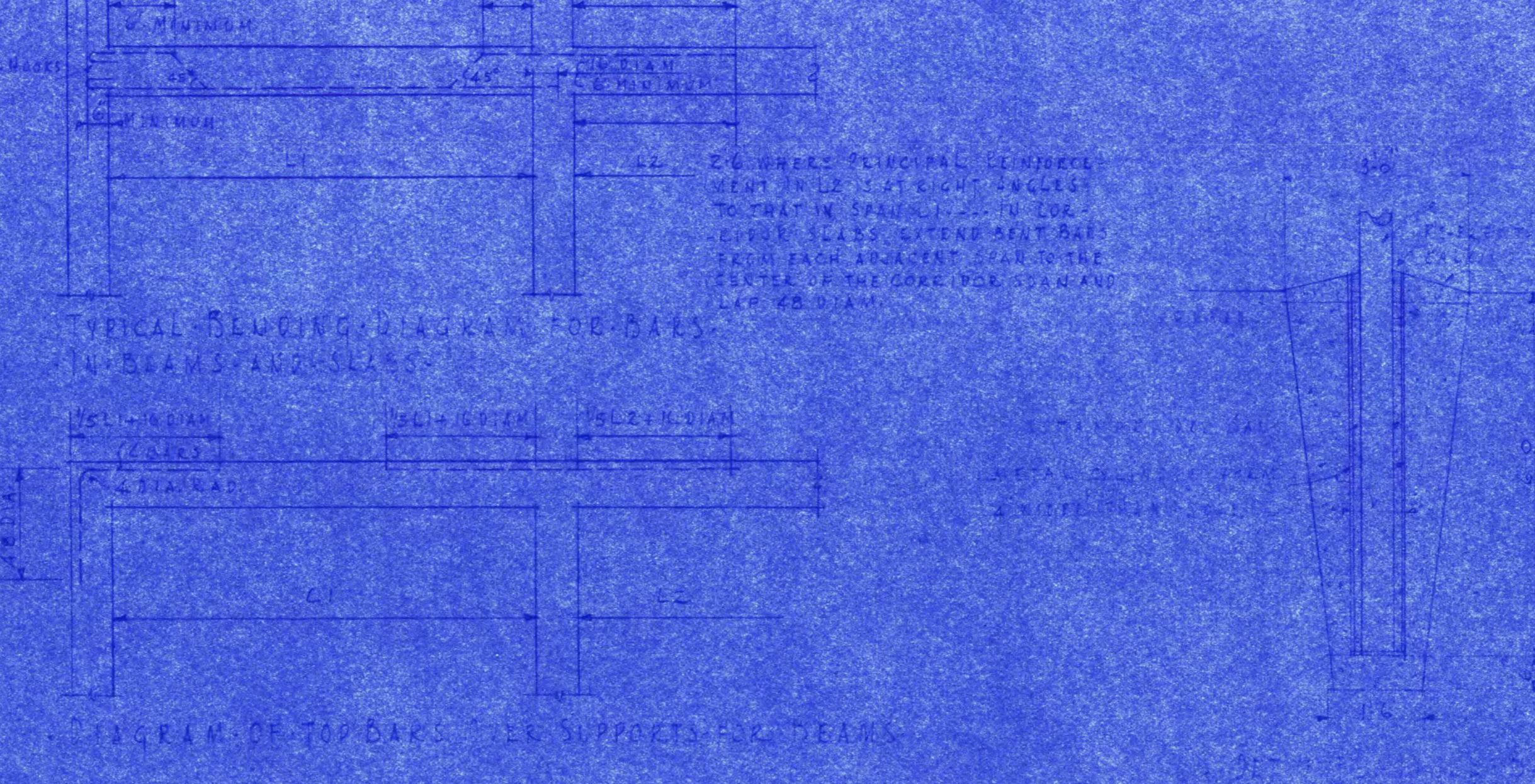
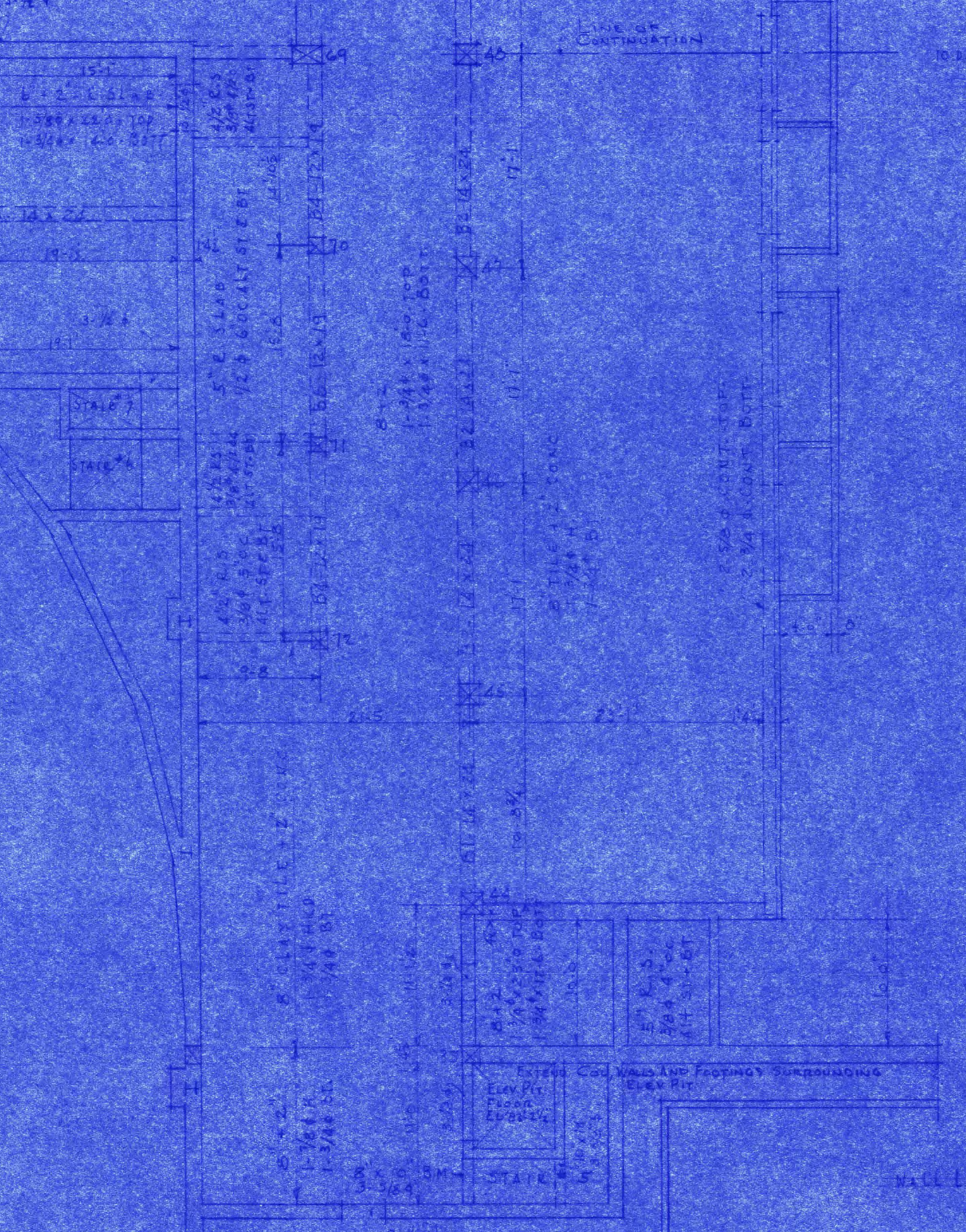
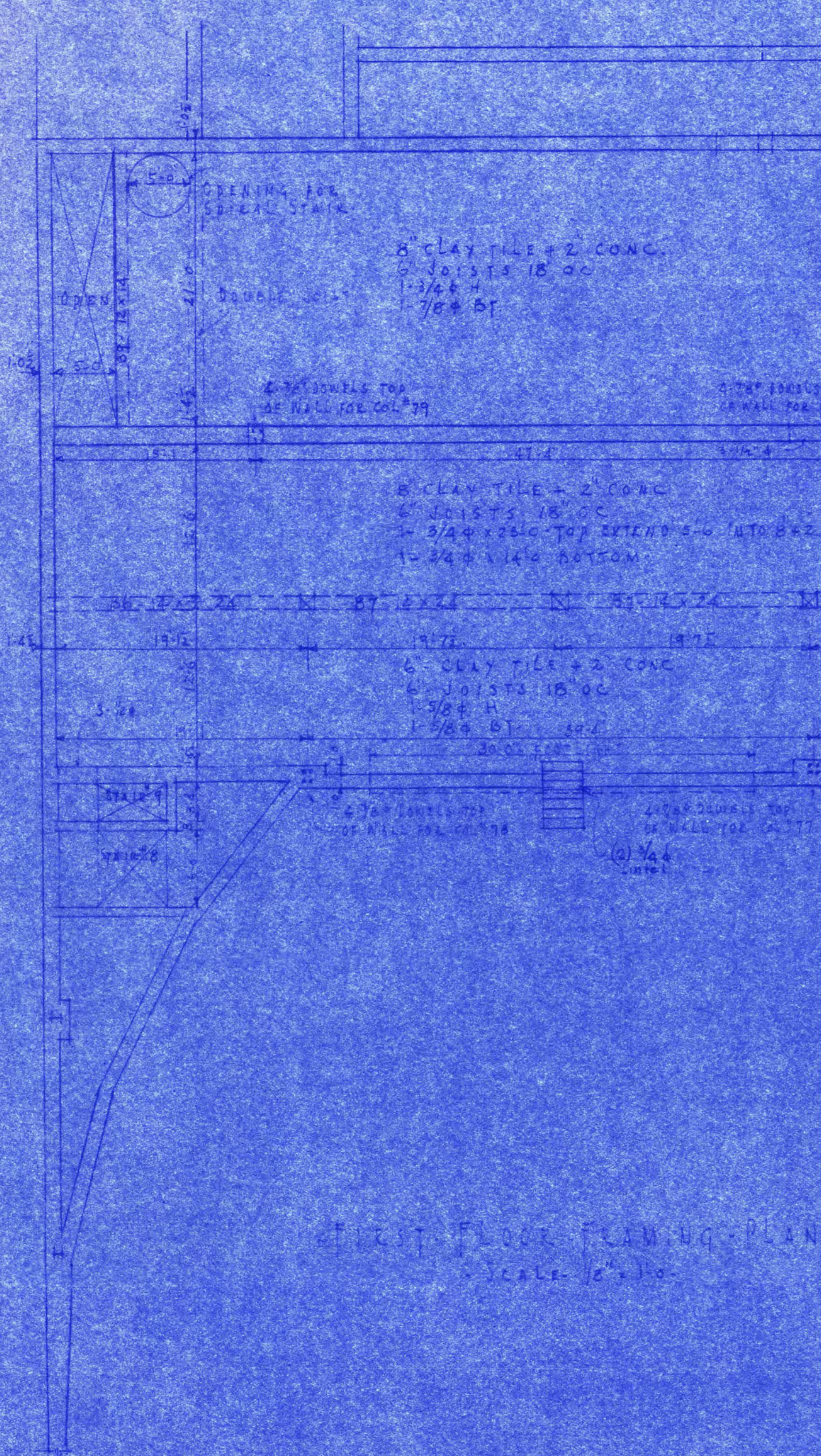


MAIN BUILDING & AUDITORIUM			
STATE TEACHERS COLLEGE			
SAINT CLOUD, MINN.			
DEPT. OF ADMINISTRATION - STATE OF MINNESOTA			
DATE	BY	FOR	SHEET NO.
DEC 1932	L.C. PINAULT & FRANK W. JACKSON - ASSOC. ARCHTS.	SAINT CLOUD, MINN.	16
REVISED FEB 1931	ELLERBE & CO. CONSULTING ARCHITECTS	SAINT PAUL, MINN.	25
	APPROVED BY	PRES. OF STATE TEACHERS COLLEGE BOARD	CONTRACT NO.
	APPROVED BY	COMMISSIONER OF ADMINISTRATION	339
		AN AUTHORIZED SIGNATURE	

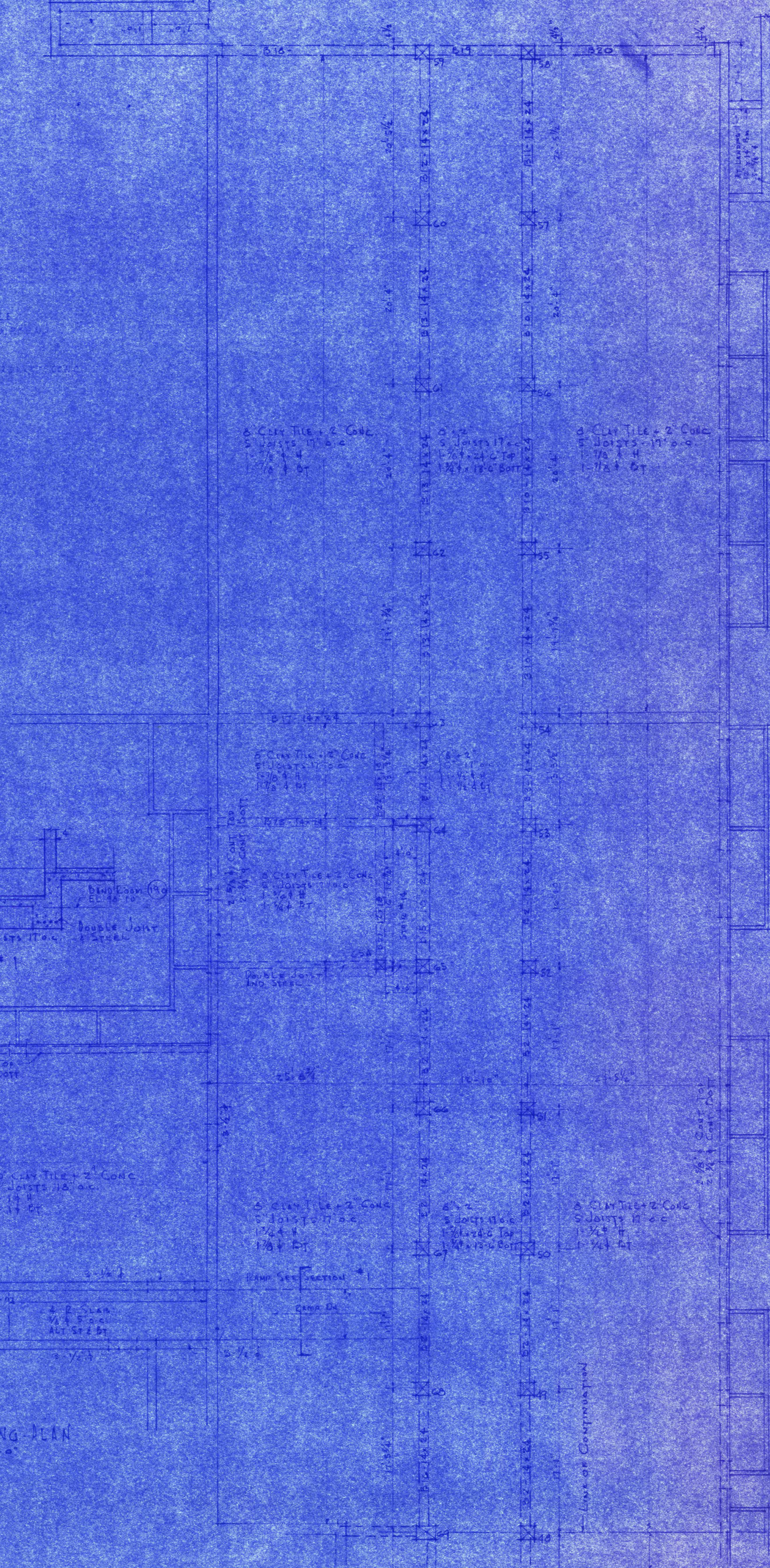
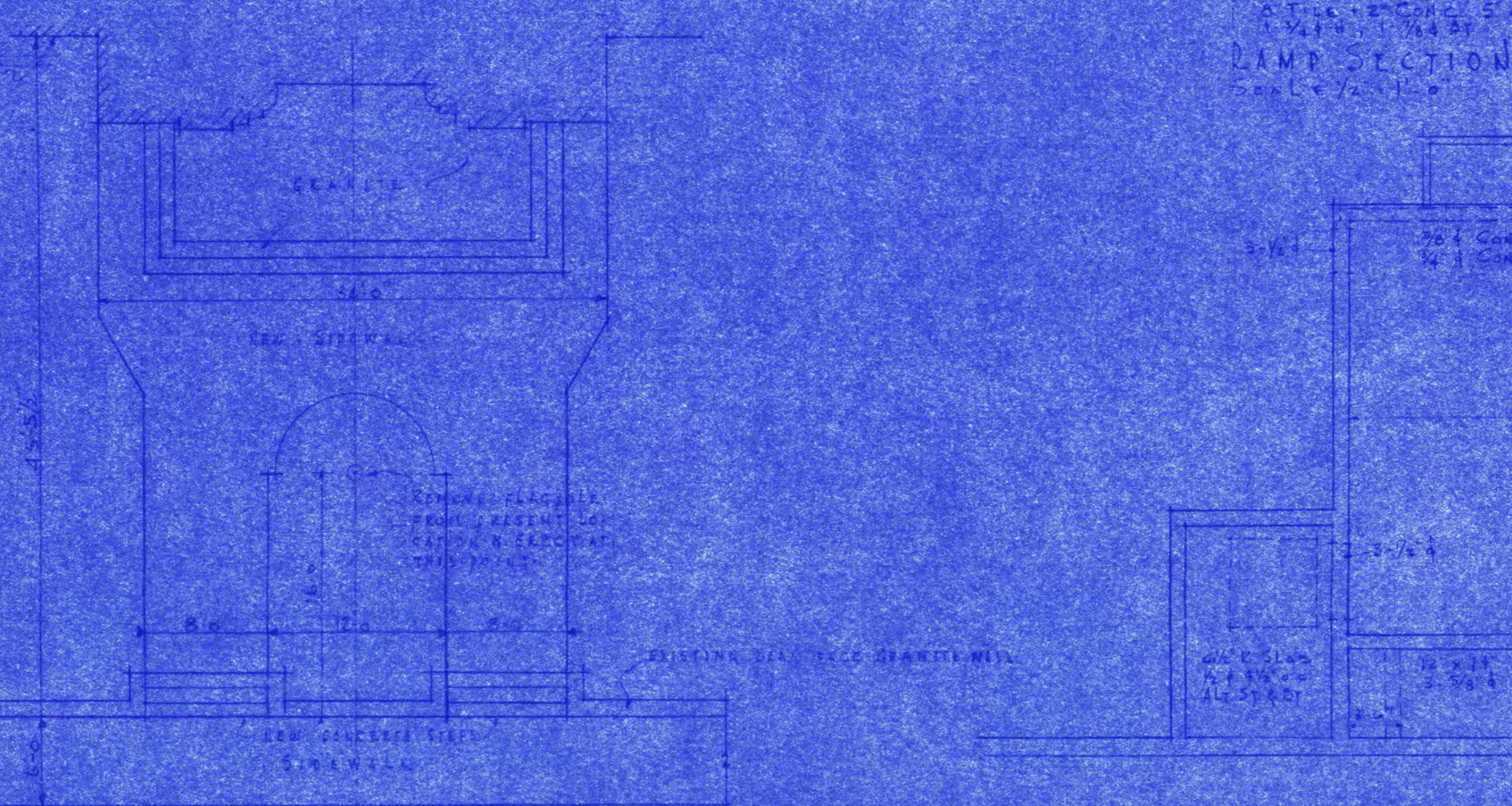
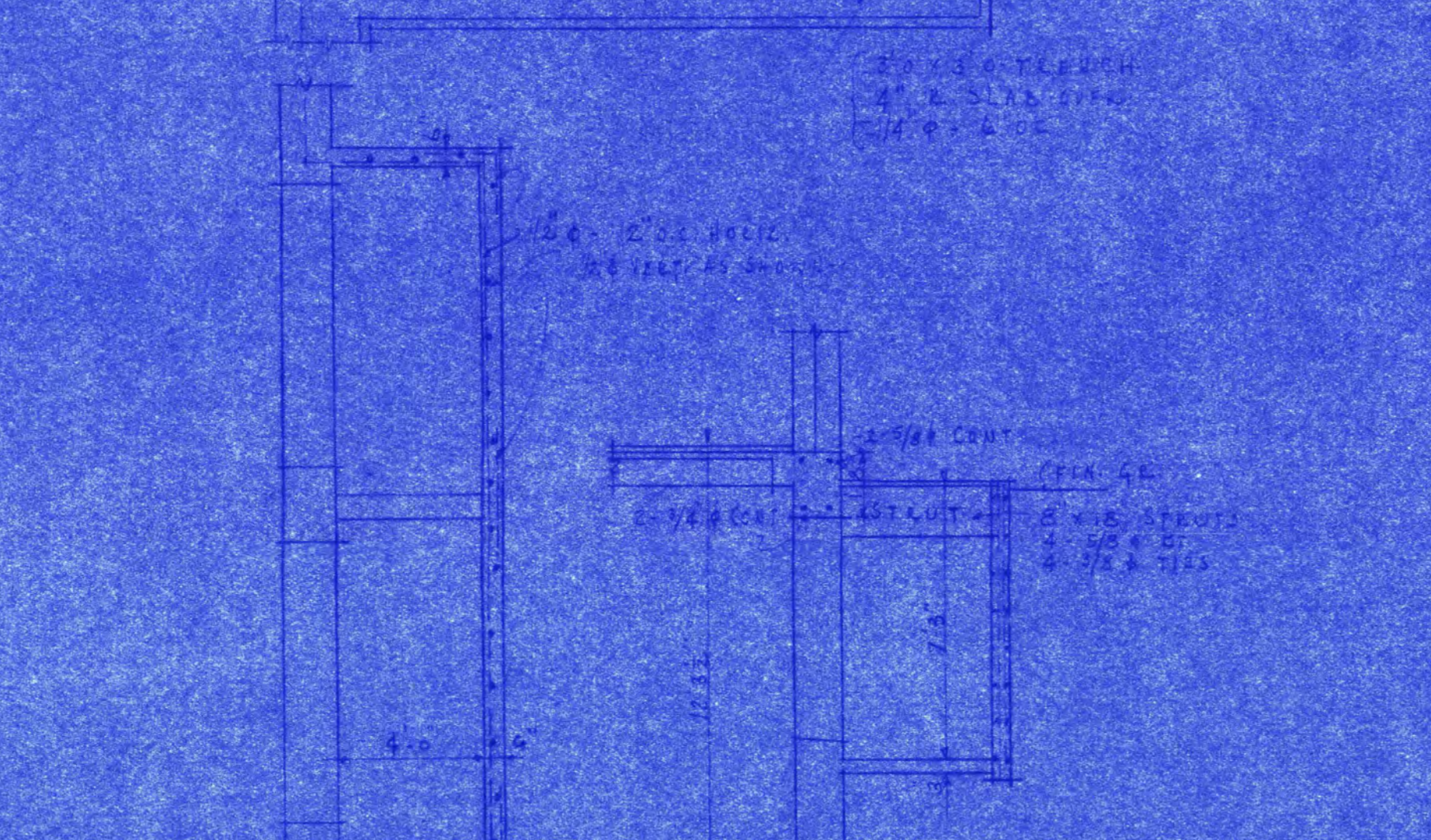
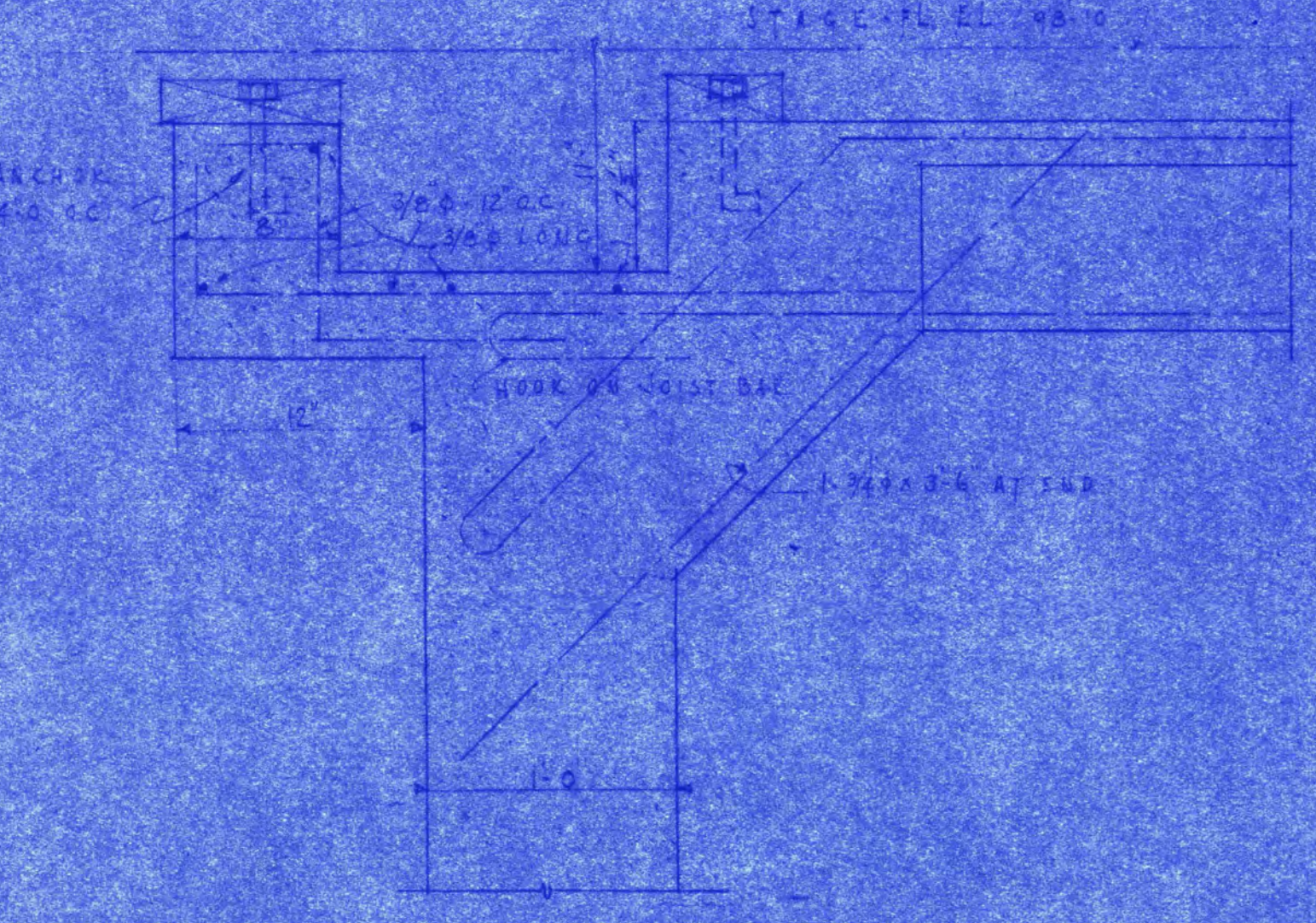


<b>MAIN BUILDING &amp; AUDITORIUM</b> <b>FOR</b> <b>STATE TEACHERS COLLEGE</b> SAINT CLOUD, MINN. DEPT. OF ADMINISTRATION — STATE OF MINNESOTA SAINT PAUL, MINN.	
DATE	L. C. PINAULT & FRANK W. JACKSON — ASSOC. ARCHTS. ST. PAUL, MINN.
1942	ELLERBE & CO. — CONSULTING ARCHITECTS SAINT PAUL, MINN.
REVISED	APPROVED BY PRES. OF STATE TEACHERS COLLEGE BOARD
FEB 1941	APPROVED BY PRES. OF STATE TEACHERS COLLEGE BOARD
DRAWN BY	L. C. PINAULT
11-E	APPROVED BY COMMISSIONER OF ADMINISTRATION AN AUTHORIZED SIGNATURE
	339

MARK	NO	SIZE	DE ROOS	CONC. ROOS	STRENGTH	SPACING	SPECIAL INSTRUCTIONS	MARK	NO	SIZE	DE ROOS	CONC. ROOS	STRENGTH	SPACING	SPECIAL INSTRUCTIONS
B11	1	14x24	2-1/4"	2-1/4"	27,000	30"	PLACE 2-1/4" DIAS TOP OVER COL 56	B11	1	12x24	2-1/4"	2-1/4"	27,000	30"	PLACE 2-1/4" DIAS TOP OVER COL 56
B12	1	14x24	2-1/4"	2-1/4"	27,000	30"	PLACE 2-1/4" DIAS TOP OVER COL 59	B12	1	12x24	2-1/4"	2-1/4"	27,000	30"	PLACE 2-1/4" DIAS TOP OVER COL 59
B13	2	14x24	2-1/4"	2-1/4"	27,000	30"	PLACE 2-1/4" DIAS TOP OVER COL 62, 63	B13	1	12x24	2-1/4"	2-1/4"	27,000	30"	PLACE 2-1/4" DIAS TOP OVER COL 62, 63
B14	1	14x24	2-1/4"	2-1/4"	27,000	30"	PLACE 2-1/4" DIAS TOP OVER COL 64	B14	1	12x24	2-1/4"	2-1/4"	27,000	30"	PLACE 2-1/4" DIAS TOP OVER COL 64
B15	1	18x24	2-1/4"	2-1/4"	27,000	30"	PLACE 2-1/4" DIAS TOP OVER EXT SUPPORT	B15	2	12x24	2-1/4"	2-1/4"	27,000	30"	PLACE 2-1/4" DIAS TOP OVER EXT SUPPORT
B16	1	14x24	2-1/4"	2-1/4"	27,000	30"	PLACE 2-1/4" DIAS TOP OVER COL 69	B16	1	12x24	2-1/4"	2-1/4"	27,000	30"	PLACE 2-1/4" DIAS TOP OVER COL 69
B17	1	14x24	2-1/4"	2-1/4"	27,000	30"	PLACE 2-1/4" DIAS TOP OVER EXT SUPPORT	B17	2	12x24	2-1/4"	2-1/4"	27,000	30"	PLACE 2-1/4" DIAS TOP OVER EXT SUPPORT
B18	1	14x24	2-1/4"	2-1/4"	27,000	30"	PLACE 2-1/4" DIAS TOP OVER EXT SUPPORT	B18	2	12x24	2-1/4"	2-1/4"	27,000	30"	PLACE 2-1/4" DIAS TOP OVER EXT SUPPORT
B19	1	14x24	2-1/4"	2-1/4"	27,000	30"	PLACE 2-1/4" DIAS TOP OVER EXT SUPPORT	B19	2	12x24	2-1/4"	2-1/4"	27,000	30"	PLACE 2-1/4" DIAS TOP OVER EXT SUPPORT
B20	1	14x24	2-1/4"	2-1/4"	27,000	30"	PLACE 2-1/4" DIAS TOP OVER COLS 58, 59	B20	1	12x24	2-1/4"	2-1/4"	27,000	30"	PLACE 2-1/4" DIAS TOP OVER COLS 58, 59
B21	1	12x18	2-1/4"	2-1/4"	27,000	30"	PLACE 2-1/4" DIAS TOP OVER COL 68 A	B21	3	12x24	2-1/4"	2-1/4"	27,000	30"	PLACE 2-1/4" DIAS TOP OVER COL 68 A
B22	1	12x18	2-1/4"	2-1/4"	27,000	30"	PLACE 2-1/4" DIAS TOP OVER EXT SUPPORT (COL 68 A)	B22	1	12x24	2-1/4"	2-1/4"	27,000	30"	PLACE 2-1/4" DIAS TOP OVER EXT SUPPORT (COL 68 A)



REINFORCEMENT FOR TEMPERATURE SHOCK SHALL BE PROVIDED IN ALL BEAMS AND COLUMNS. REINFORCEMENT SHALL BE PLACED IN ALL BEAMS AND COLUMNS AT THE JOINTS. REINFORCEMENT SHALL BE PLACED IN ALL BEAMS AND COLUMNS AT THE JOINTS. REINFORCEMENT SHALL BE PLACED IN ALL BEAMS AND COLUMNS AT THE JOINTS.



**MAIN BUILDING & AUDITORIUM**  
 FOR  
**STATE TEACHERS COLLEGE**  
 SAINT CLOUD, MINN.  
 DEPT. OF ADMINISTRATION - STATE OF MINNESOTA  
 SAINT PAUL, MINN.

DATE: FEB. 1911  
 DRAWN BY: J. F. Z.  
 APPROVED BY: [Signature]  
 APPROVED BY: [Signature]

18 of 28  
 CONTRACT NO. 339