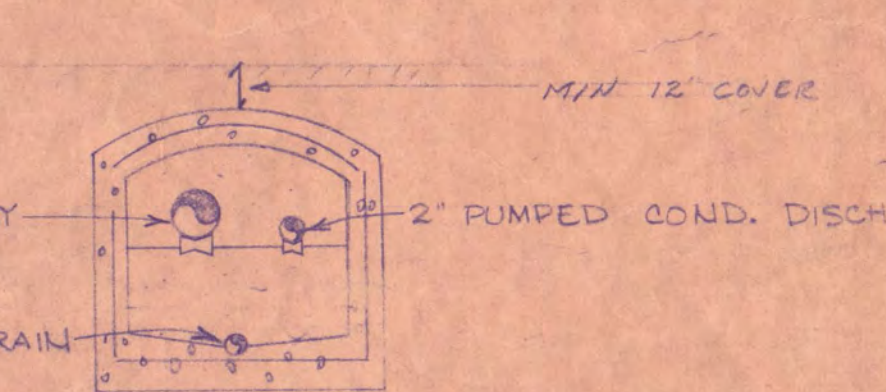
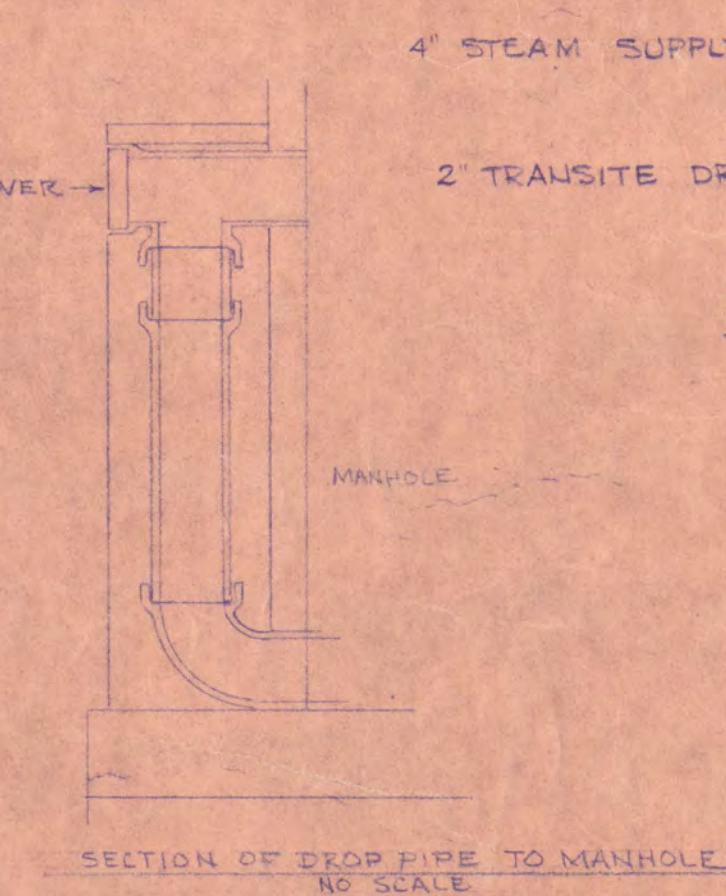


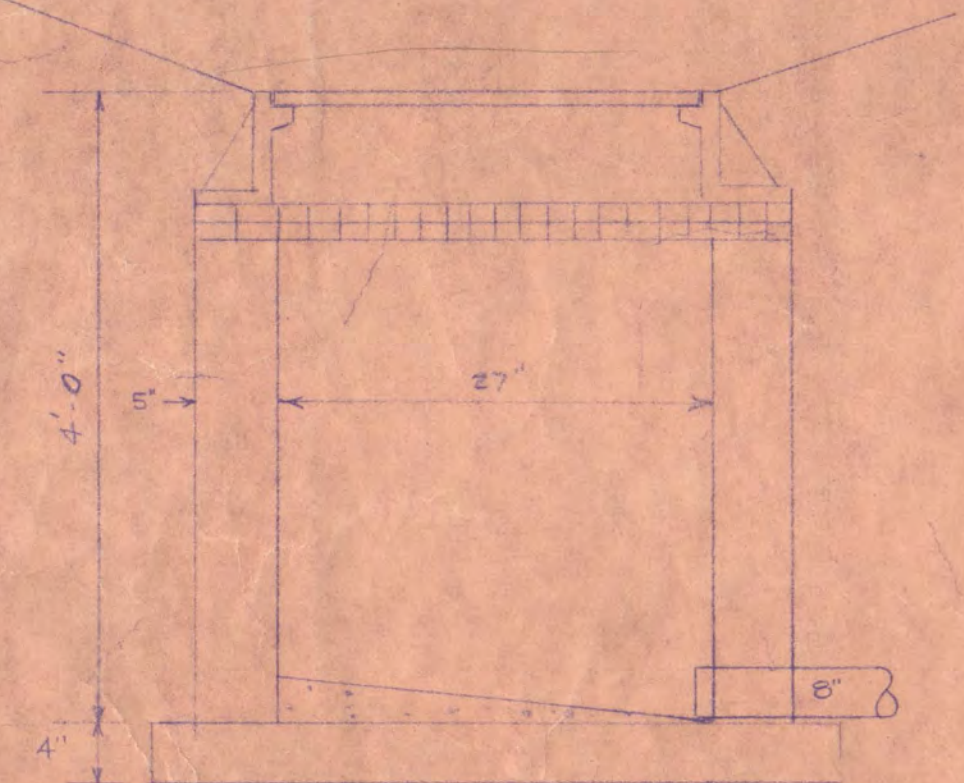
DETAIL OF TRAP DISCHARGE TO P.F.  
NO SCALE



SECTION THRU TUNNEL  
NO SCALE



SECTION OF DROP PIPE TO MANHOLE  
NO SCALE




RAINWATER CATCHBASIN  
NO SCALE

AREA NOT SHOWN & CENTENNIAL HALL WAS NOT INVESTIGATED. LOCATION OF TREES & GRASSES ARE APPROXIMATE.

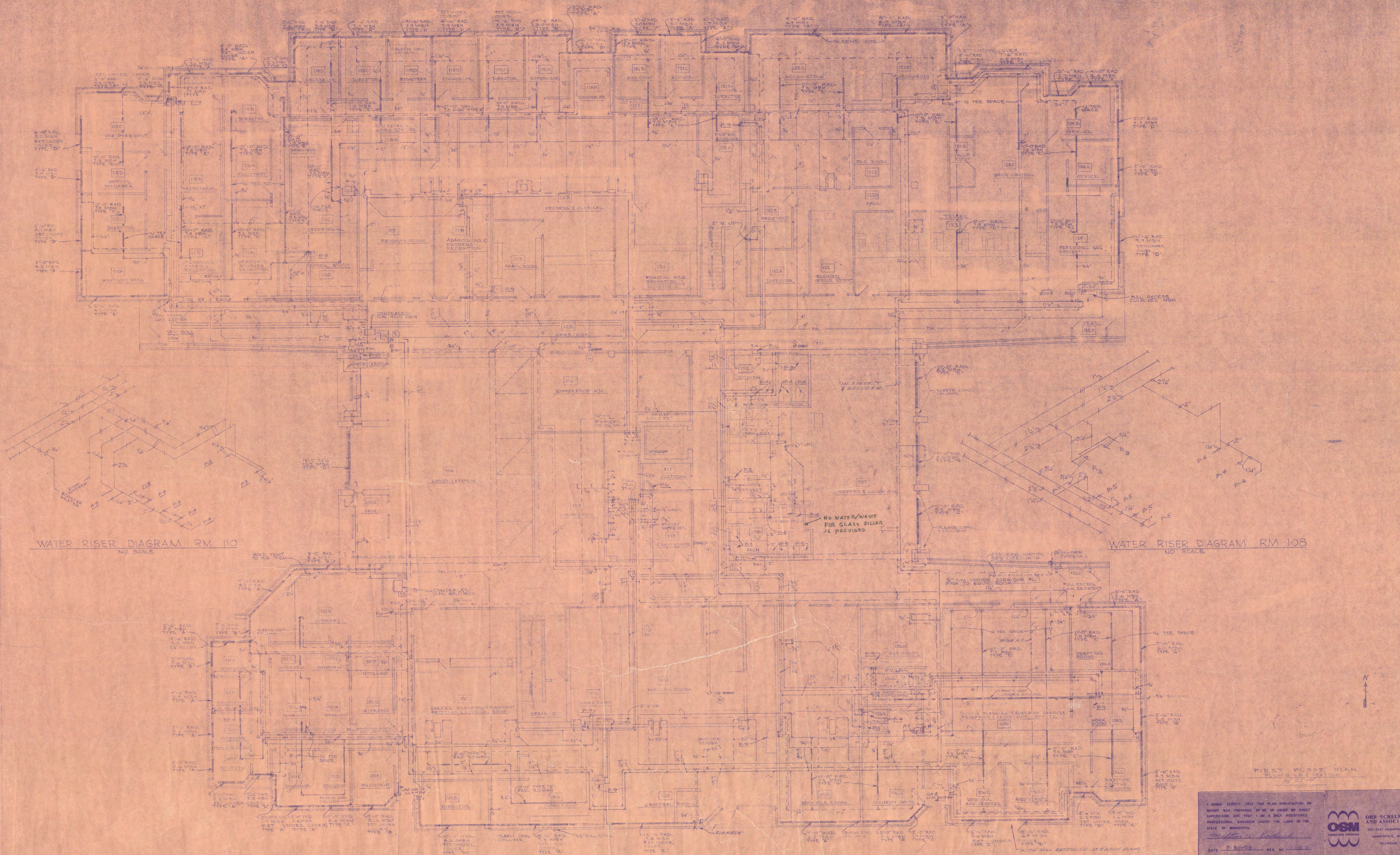
SIDE CURB SEE DETAIL

NOTE: ANY AND ALL ITEMS SPECIFIED WHETHER SHOWN OR NOT SHALL BE INSTALLED AS SHOWN ON PLAN.

SITE PLAN 1" = 30'-0"

I HEREBY CERTIFY THAT THE PLAN SPECIFICATION, OR REPORT WAS PREPARED BY ME OR UNDER MY DIRECT SUPERVISION AND THAT I AM A DAILY REGISTERED PROFESSIONAL ENGINEER UNDER THE LAWS OF THE STATE OF MINNESOTA. <i>Walter W. Kallan</i> DATE 7-30-73 REG. NO. 1267		 <b>ORR-SCHLEEN-MAYERSON AND ASSOCIATES, INC.</b> CONSULTING ENGINEERS 2025 EAST HANSEN AVENUE, SUITE 208 MINNEAPOLIS, MINNESOTA 55413 TELEPHONE 823-3184
<b>ADMINISTRATION BUILDING ST. CLOUD STATE COLLEGE</b> <b>TRAYNOR, HERMANSON &amp; HAHN ARCHITECTS INC.</b> ST. CLOUD, MINNESOTA STRUCTURAL ENGINEERS JOHNSTON & SAHLMAN, INC. MPLS., MINN. CONSULTING ENGINEERS ORR-SCHLEEN-MAYERSON & ASSOC., INC. MPLS., MINN. DRAWN GDA CHECKED THW DATE 7-30-73 OF 6		
STATE OF MINNESOTA DEPARTMENT OF ADMINISTRATION ARCHITECTURAL AND ENGINEERING DIVISION ROOM 310 ADMINISTRATION BUILDING ST. PAUL, MINN.		SHEET NO. <b>M-1</b> APPROVED BY _____ PRESIDENT OF ST. CLOUD STATE COLLEGE APPROVED BY _____ STATE COLLEGE BOARD APPROVED BY _____ COMMISSIONER OF ADMINISTRATION AN INDEPENDENT BOARD
STATE PROJECT NO. 6360174		





I HEREBY CERTIFY THAT THIS PLAN SPECIFICATION OR REPORT WAS PREPARED BY ME OR UNDER MY DIRECT SUPERVISION AND THAT I AM A DULY REGISTERED PROFESSIONAL ENGINEER UNDER THE LAWS OF THE STATE OF MINNESOTA.

*John W. Hahn*

DATE: 7-30-73 REG. NO. 11000

**OSM**  
CONSULTING ENGINEERS

**ORR-SCHLEN-MAYERSON AND ASSOCIATES, INC.**  
202 EAST HENNING AVENUE, SUITE 204  
MINNEAPOLIS, MINNESOTA 55411  
TELEPHONE 800-331-8640

**ADMINISTRATION BUILDING ST. CLOUD STATE COLLEGE**

TRAYNOR, HERMANSON & HAHN ARCHITECTS INC. MINNESOTA

STRUCTURAL ENGINEERS JOHNSTON & SAHLMAN, INC. MPLS., MINN.  
CONSULTING ENGINEERS ORR-SCHLEN-MAYERSON & ASSOC., INC. MPLS., MINN.

DRAWN: [ ] CHECKED: [ ] DATE: 7-30-73 SHEET NO. M-22 OF 60

STATE OF MINNESOTA  
DEPARTMENT OF ADMINISTRATION  
ARCHITECTURAL AND ENGINEERING DIVISION  
ROOM 610 ADMINISTRATION BUILDING ST. PAUL, MINN.

APPROVED BY: PRESIDENT ST. CLOUD STATE COLLEGE

APPROVED BY: STATE COLLEGE BOARD

APPROVED BY: [ ]  
CONSULTING ENGINEER UNDER AUTHORIZATION OF REGISTERED SIGNATURE

STATE PROJECT NO. 6380174

SEE ALL APPROPRIATE DETAILS AND SPECIFICATIONS IN THE CONTRACT DOCUMENTS AND DRAWINGS FOR THE PROJECT. THIS PLAN IS TO BE USED AS A GUIDE ONLY AND IS NOT TO BE CONSIDERED AS A CONTRACT DOCUMENT.



WASTE & VENT RISER DIAGRAM RMS 213 & 214  
NO SCALE

WASTE & VENT RISER DIAGRAMS RMS 108 & 110  
NO SCALE

SECOND FLOOR PLAN  
PLUMBING & HEATING  
1/8" = 1'-0"

I HEREBY CERTIFY THAT THIS PLAN, SPECIFICATION, OR REPORT WAS PREPARED BY ME OR UNDER MY DIRECT SUPERVISION AND THAT I AM A DULY REGISTERED PROFESSIONAL ENGINEER UNDER THE LAWS OF THE STATE OF MINNESOTA.

*Paul Schellen*  
DATE 7-20-73 REG. NO. \_\_\_\_\_

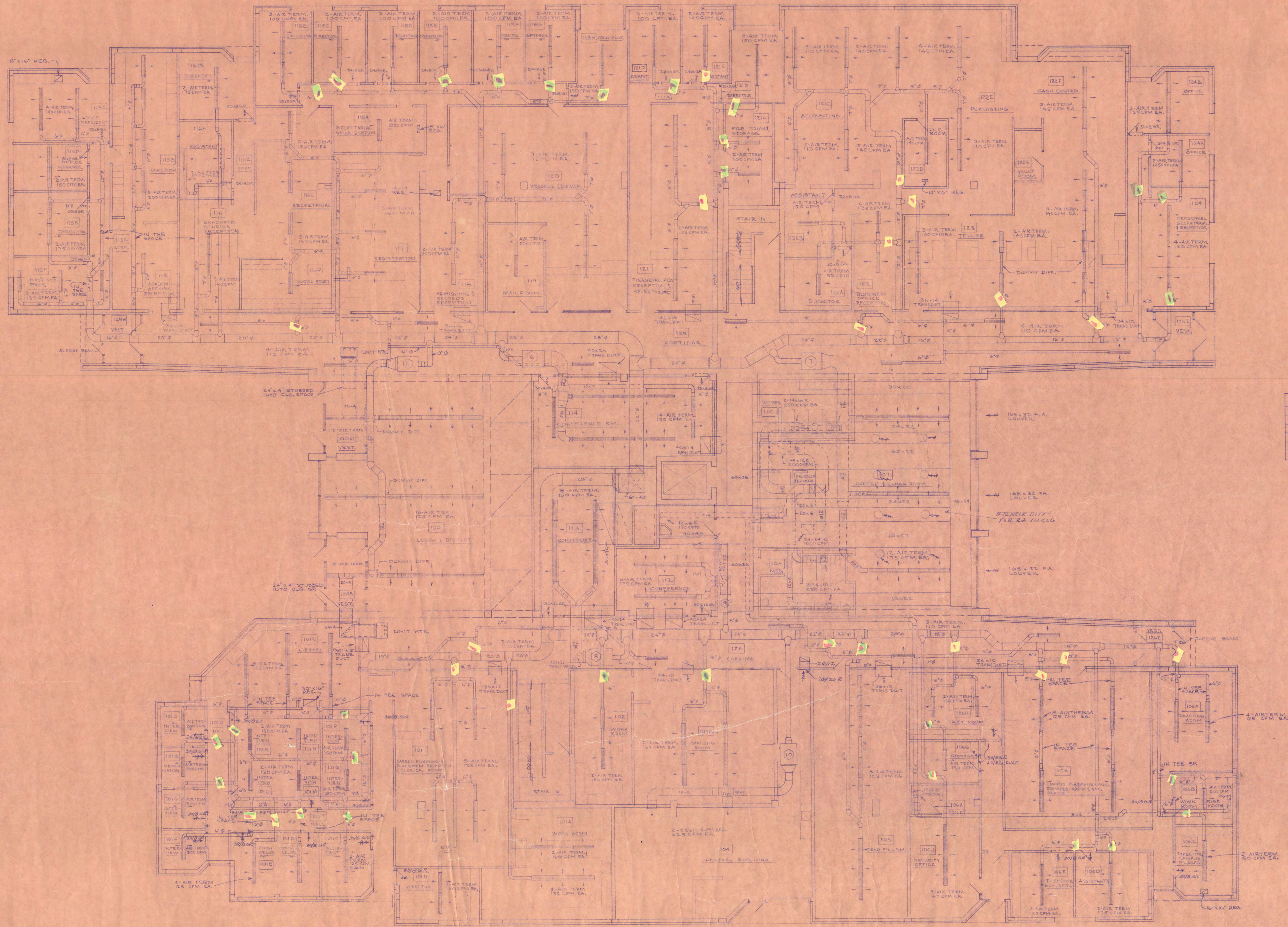
**OSM**  
CONSULTING ENGINEERS

**ORR-SCHLEEN-MAYERON AND ASSOCIATES, INC.**  
303 EAST WASHINGTON AVENUE, SUITE 218  
MINNEAPOLIS, MINNESOTA 55401  
TELEPHONE: 612-331-8440

<b>ADMINISTRATION BUILDING ST. CLOUD STATE COLLEGE</b>		SHEET NO. <b>M-7</b> OF 6
TRAYNOR, HERMANSON & HAHN ARCHITECTS INC. ST. CLOUD, MINNESOTA STRUCTURAL ENGINEERS JOHNSTON & SAHLMAN, INC. MPLS., MINN. CONSULTING ENGINEERS ORR-SCHLEEN-MAYERON & ASSOC., INC. MPLS., MINN.		DATE 7-20-73 CHECKED _____ DRAWN _____
STATE OF MINNESOTA DEPARTMENT OF ADMINISTRATION ARCHITECTURAL AND ENGINEERING DIVISION ROOM 6-10 ADMINISTRATION BUILDING ST. PAUL, MINN.	APPROVED BY PRESIDENT ST. CLOUD STATE COLLEGE _____ APPROVED BY STATE COLLEGE BOARD _____ APPROVED BY COMMISSIONER OF ADMINISTRATION AN AUTHORIZED SIGNATURE _____	STATE PROJECT NO. 6360174

NOTE: ANY NUMBER ALL THESE SPECIFIED WHETHER SHOWN ON PLANS OR NOT SHALL BE INSTALLED AS SHOWN ON PLANS





RADIATION SCHEDULE				
TYPE	Ø TUBE	FIN/FT.	ENCLOSURE	REMARKS
'A'	3/4"	48	12" HIGH	
'B'			16" HIGH	FREE STANDING
'C'				SILL EXTENSION
'D'				EXPOSED FINIS IN CLG.

FIRST FLOOR PLAN  
VENTILATION  
7/8" x 17'-0"

I HEREBY CERTIFY THAT THIS PLAN SPECIFICATION OR REPORT WAS PREPARED BY ME OR UNDER MY DIRECT SUPERVISION AND THAT I AM A DULY REGISTERED PROFESSIONAL ENGINEER UNDER THE LAWS OF THE STATE OF MINNESOTA.

*Milton W. Hahn*  
DATE 7-30-73 REG. NO. 7227

**OSM**  
ORR-SCHELEN-MAYERON AND ASSOCIATES, INC.  
303 EAST BROADWAY AVENUE, SUITE 104  
MINNEAPOLIS, MINNESOTA 55401  
TELEPHONE 855-3744

ADMINISTRATION BUILDING ST. CLOUD STATE COLLEGE

TRAYNOR, HERMANSON & HAHN ARCHITECTS INC. SHEET NO. M-76  
MINNESOTA  
STRUCTURAL ENGINEERS JOHNSTON & SAHLMAN, INC. MPLS. MINN.  
CONSULTING ENGINEERS ORR - SCHELEN - MAYERON & ASSOC., INC. MPLS. MINN.

DRAWN G.D.A. CHECKED M.W.K. DATE 7-30-73 OF 6

STATE OF MINNESOTA  
DEPARTMENT OF ADMINISTRATION

APPROVED BY: \_\_\_\_\_  
PRESIDENT ST. CLOUD STATE COLLEGE

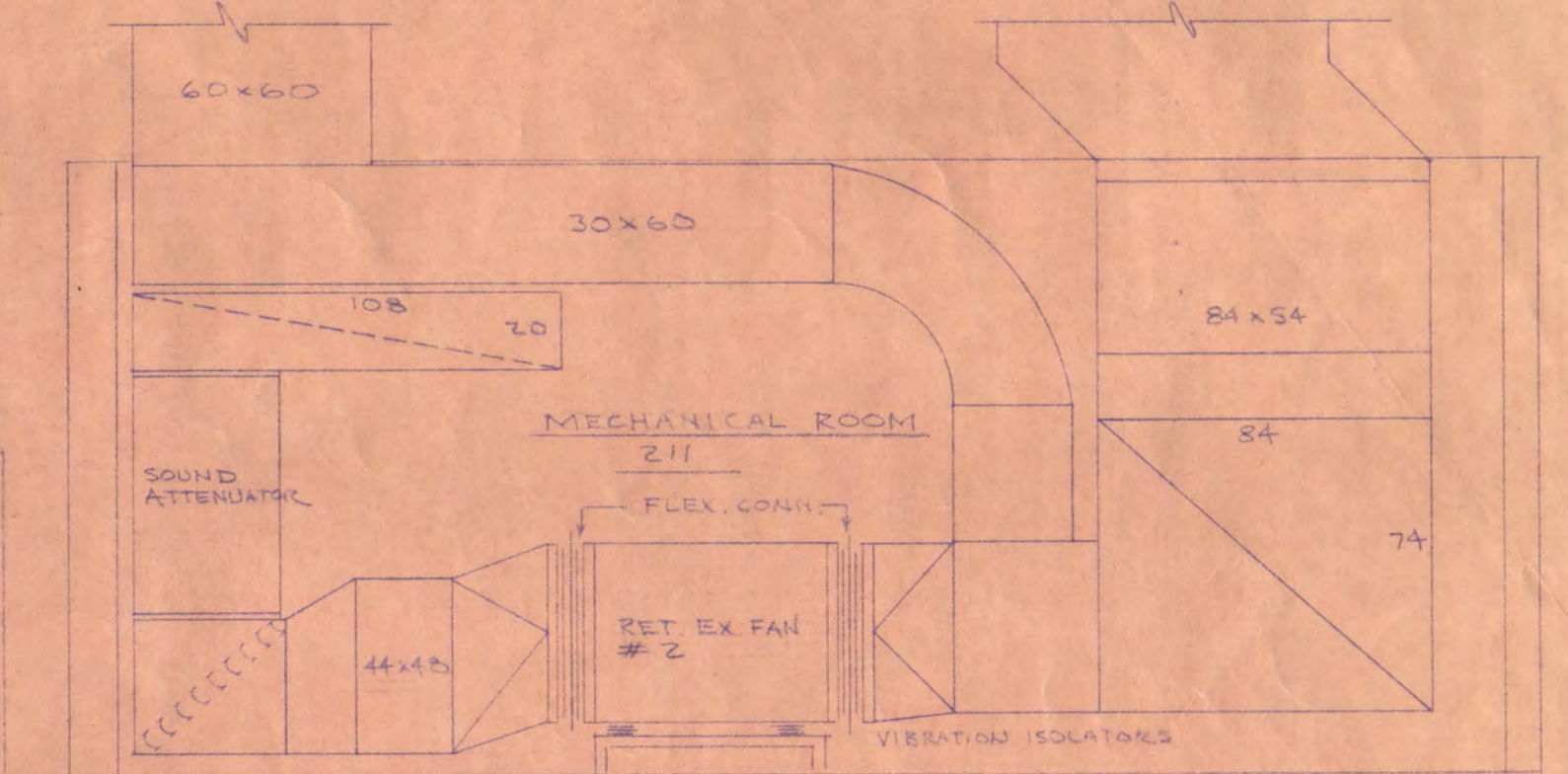
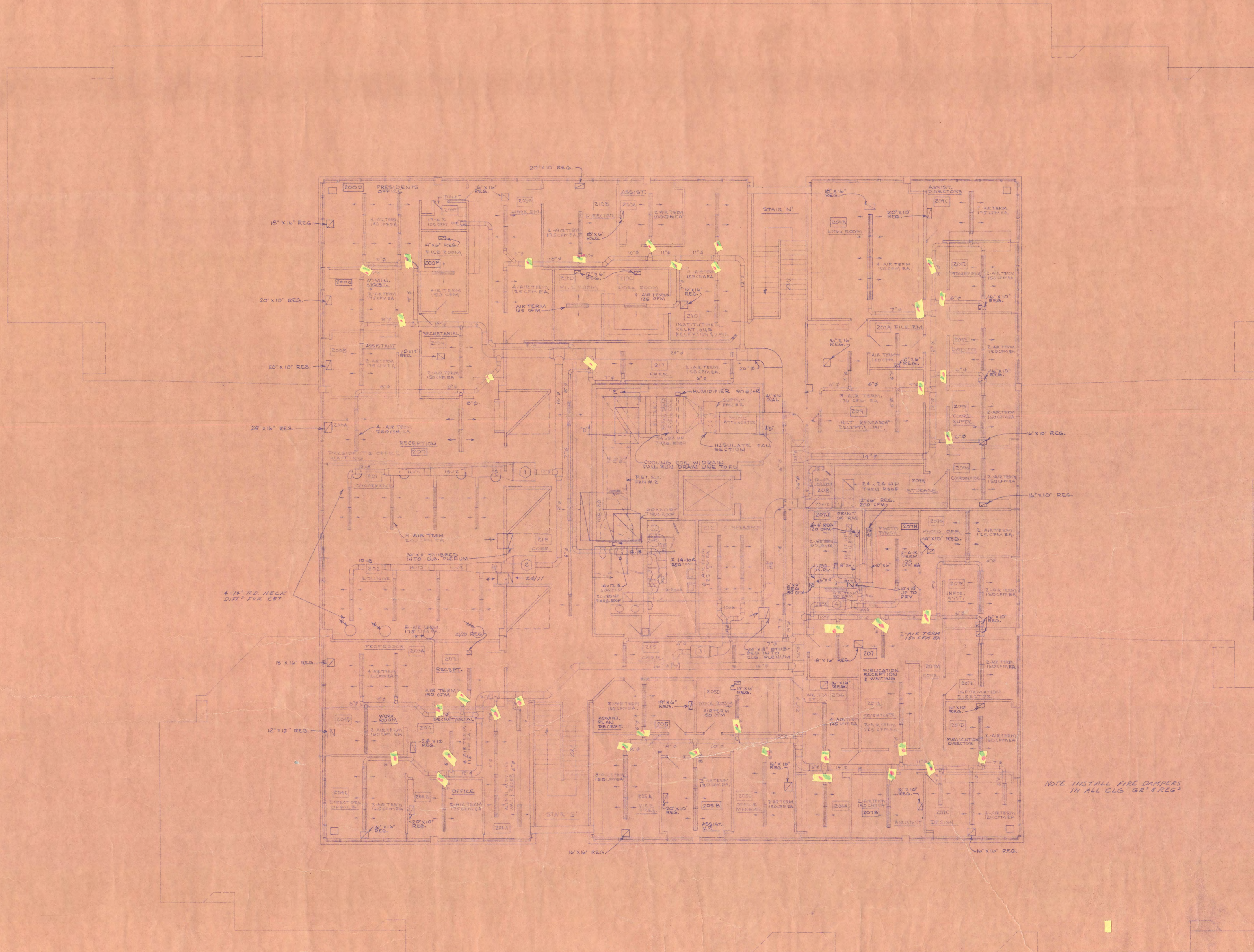
APPROVED BY: \_\_\_\_\_  
STATE COLLEGE BOARD

APPROVED BY: \_\_\_\_\_  
COMMISSIONER OF ADMINISTRATION  
AN AUTHORIZED SIGNATURE

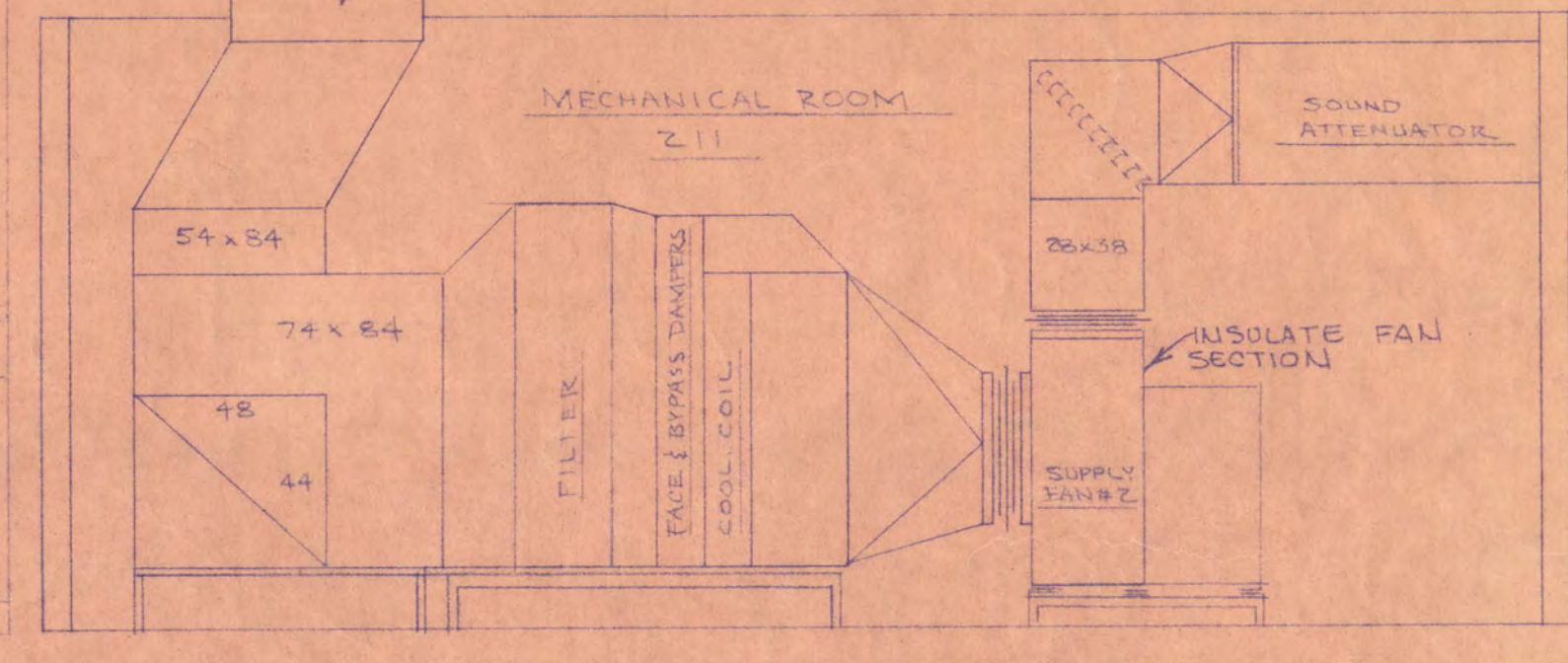
STATE PROJECT NO. 6360174

NOTE: ALL UNITS ALL ITEMS SPECIFIED WHENEVER SHOWN ON PLANS OR NOT SHALL BE INSTALLED AS IF SHOWN ON PLANS

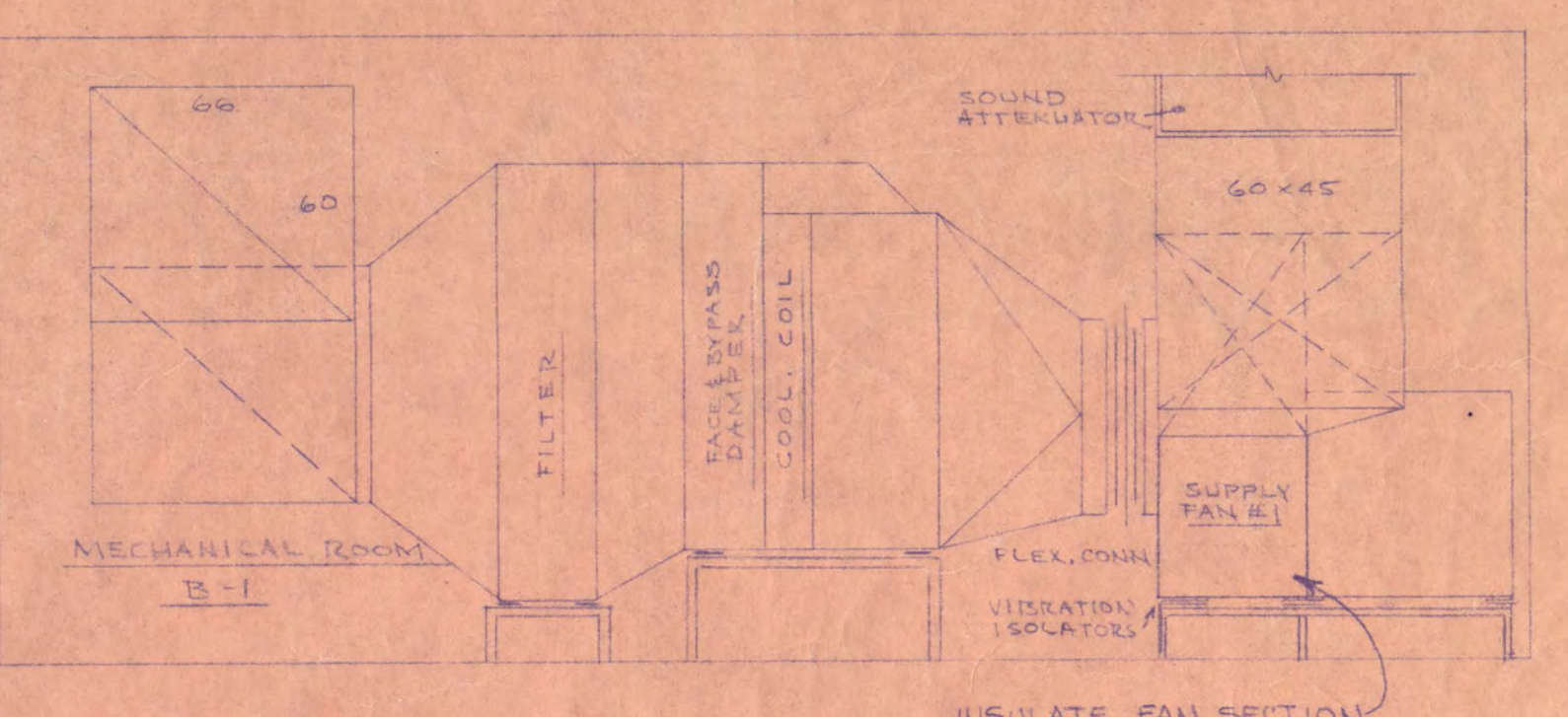




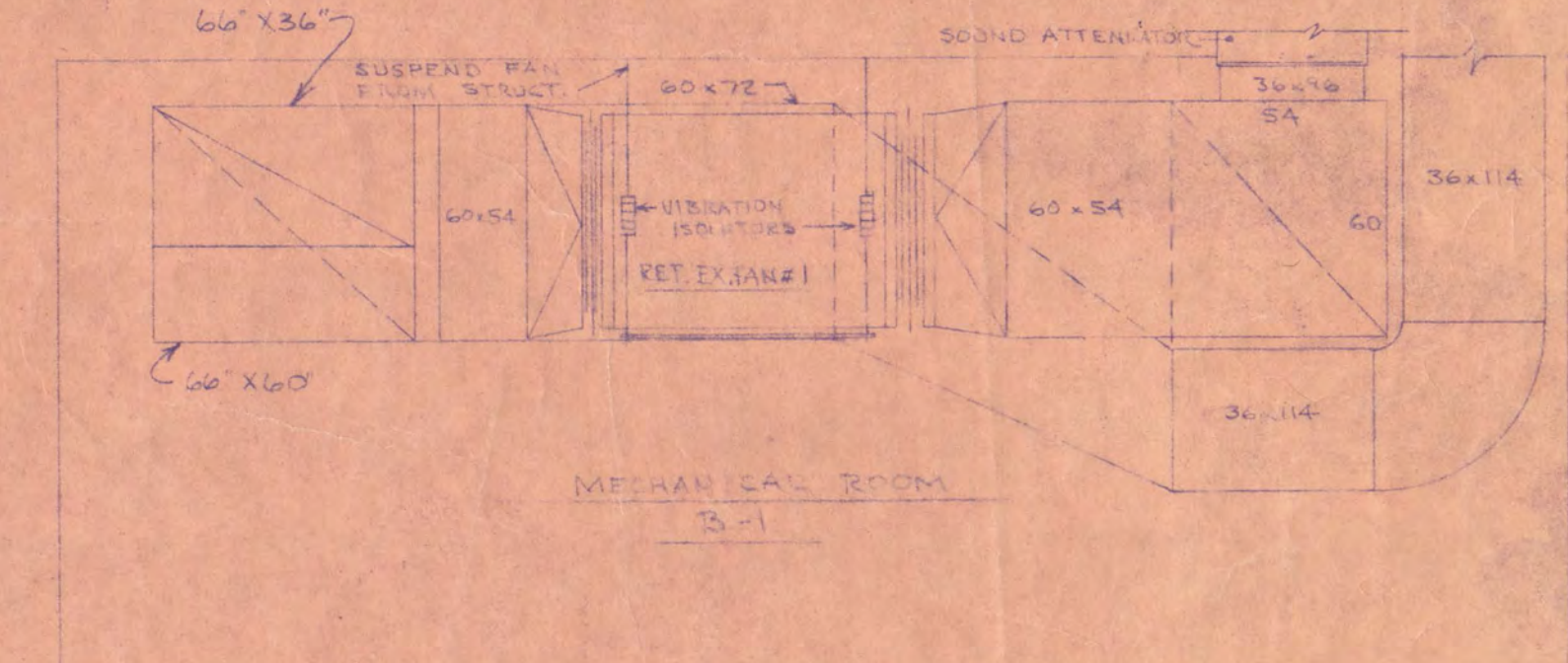
SECTION E-E'  
SCALE 1/4" = 1'-0"



SECTION D-D'  
SCALE 1/4" = 1'-0"



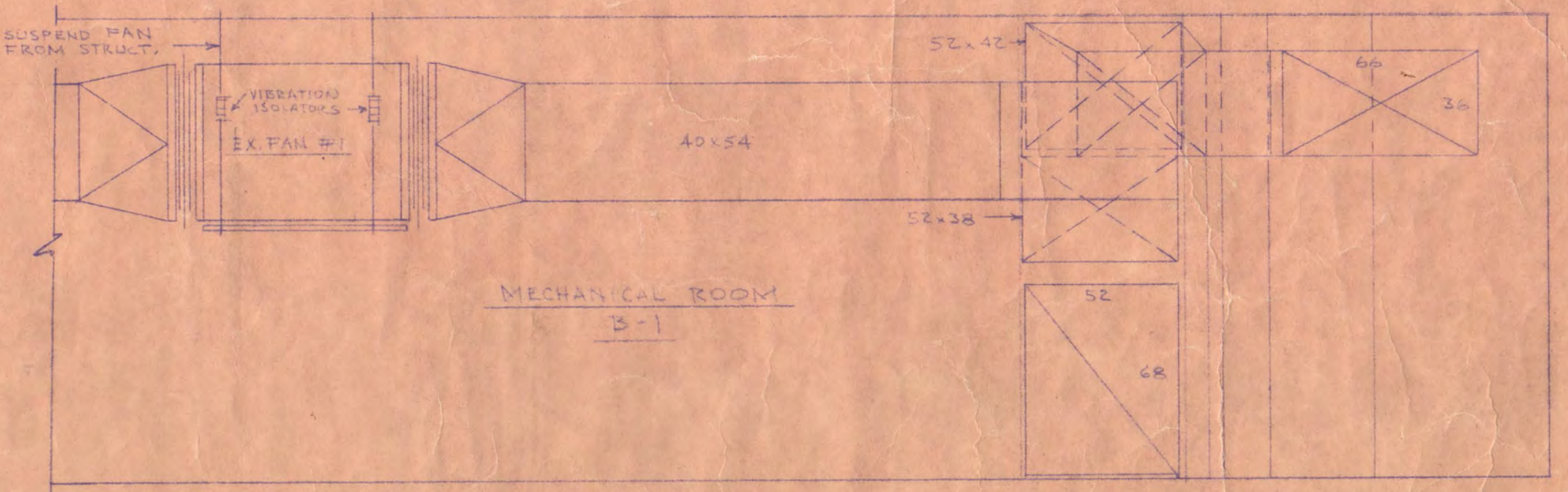
SECTION A-A'  
SCALE 1/4" = 1'-0"



SECTION B-B'  
SCALE 1/4" = 1'-0"

SECOND FLOOR PLAN  
VENTILATION  
SCALE 1/4" = 1'-0"

NOTE: INSTALL FIRE DAMPERS  
IN ALL CLG. 60" x 18"



SECTION F-F'  
SCALE 1/4" = 1'-0"

NOTE: ANY AND/OR ALL ITEMS SPECIFIED WHICH  
SHOWN ON PLANS, EX. NOT SHOWN ON PLANS,  
SHALL BE SHOWN ON PLANS.

I HEREBY CERTIFY THAT THIS PLAN SPECIFICATION OR REPORT WAS PREPARED BY ME OR UNDER MY DIRECT SUPERVISION AND THAT I AM A QUALIFIED REGISTERED PROFESSIONAL ENGINEER UNDER THE LAWS OF THE STATE OF MINNESOTA.

*Walter W. Koshick*  
DATE 7-30-78 REG. NO. 4187

**OSM**  
ORR-SCHELEN-MAYERON AND ASSOCIATES, INC.  
CONSULTING ENGINEERS ORR-SCHELEN-MAYERON & ASSOC., INC. MPLS., MINN.  
360 EAST WASHINGTON AVENUE, SUITE 200  
MINNEAPOLIS, MINNESOTA 55401  
TELEPHONE 612-333-4444

**ADMINISTRATION BUILDING ST. CLOUD STATE COLLEGE**

TRAYNOR, HERMANSON & HAHN ARCHITECTS INC. ST. CLOUD, MINNESOTA  
STRUCTURAL ENGINEERS JOHNSTON & SAHLMAN, INC. MPLS., MINN.  
CONSULTING ENGINEERS ORR-SCHELEN-MAYERON & ASSOC., INC. MPLS., MINN.

DRAWN GDA CHECKED MWW DATE 7-30-78 OF 6

STATE OF MINNESOTA  
DEPARTMENT OF ADMINISTRATION  
ARCHITECTURAL AND ENGINEERING DIVISION  
ROOM 616 ADMINISTRATION BUILDING  
ST. PAUL 55155

APPROVED BY  
PRESIDENT OF ST. CLOUD STATE COLLEGE

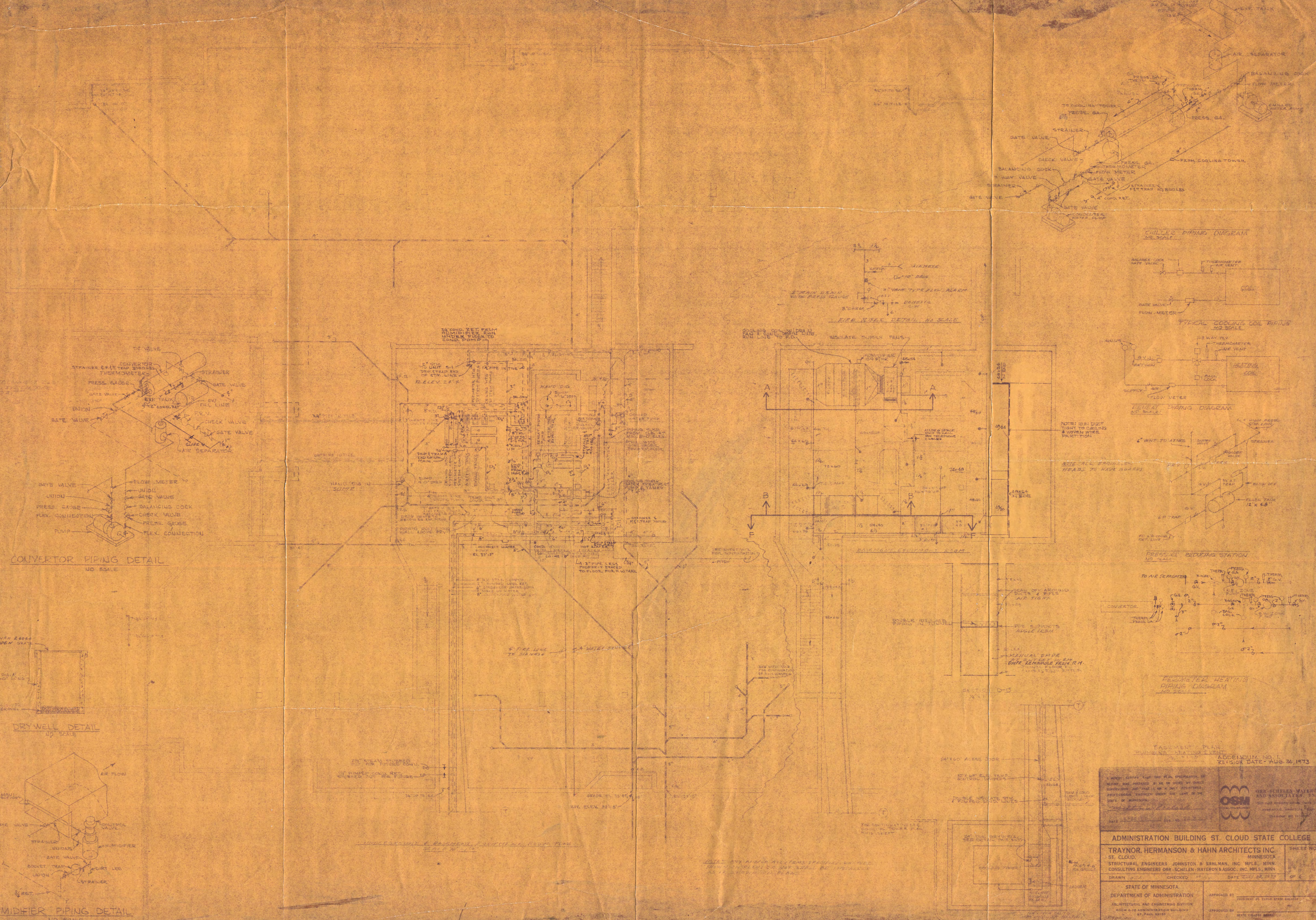
APPROVED BY  
STATE COLLEGE BOARD

APPROVED BY  
COMMISSIONER OF ADMINISTRATION  
AN AUTHORIZED SIGNATURE

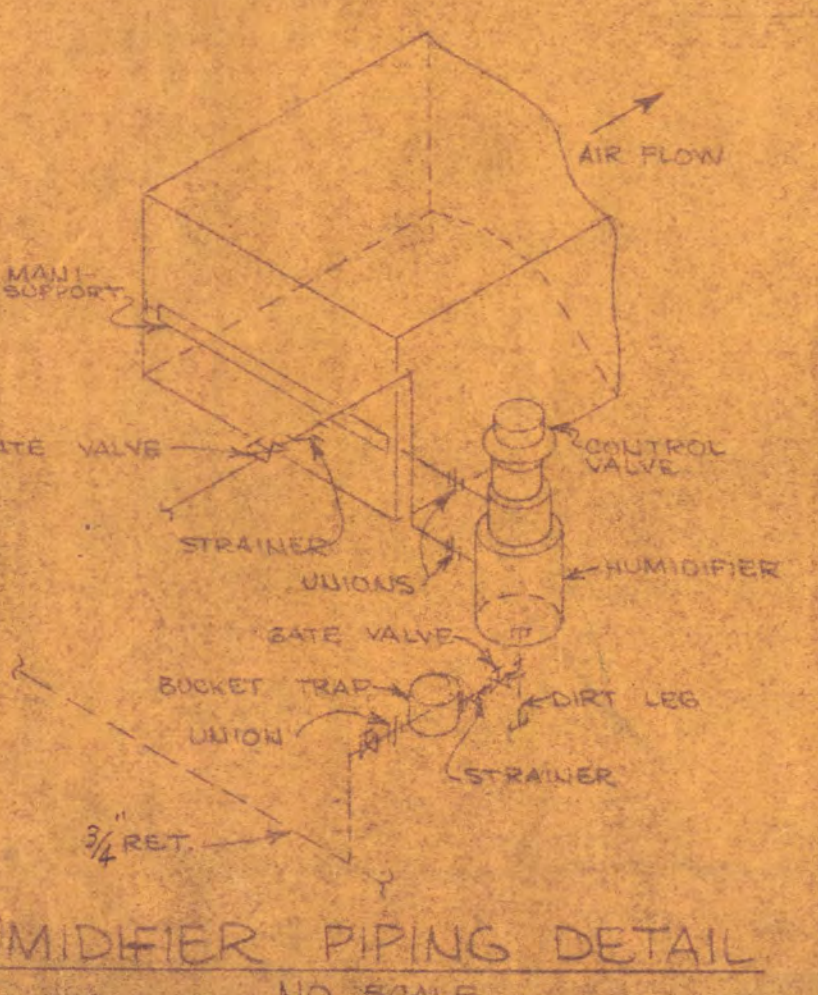
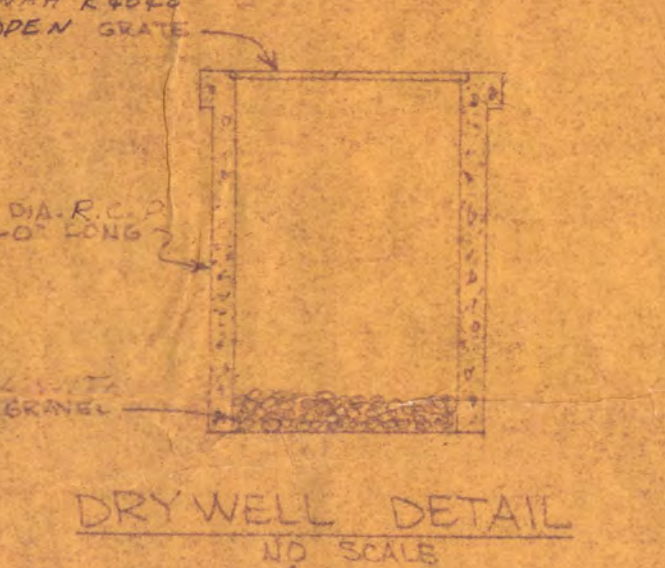
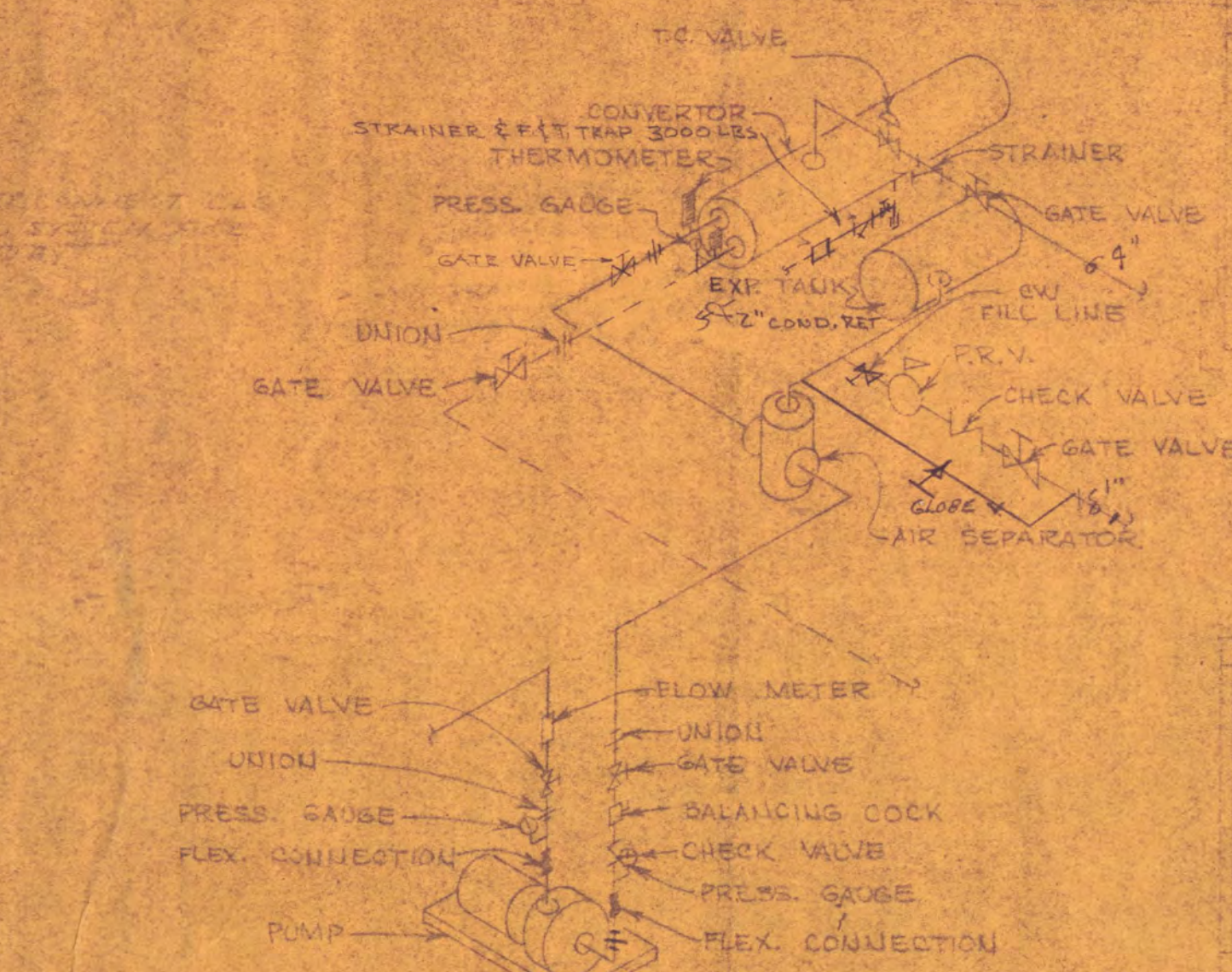
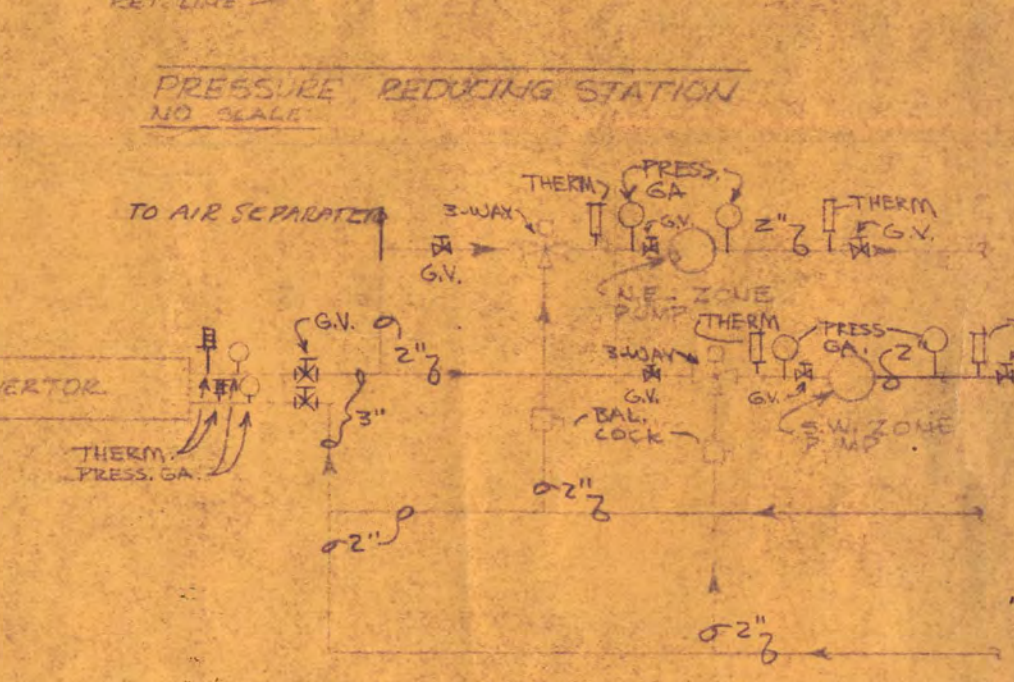
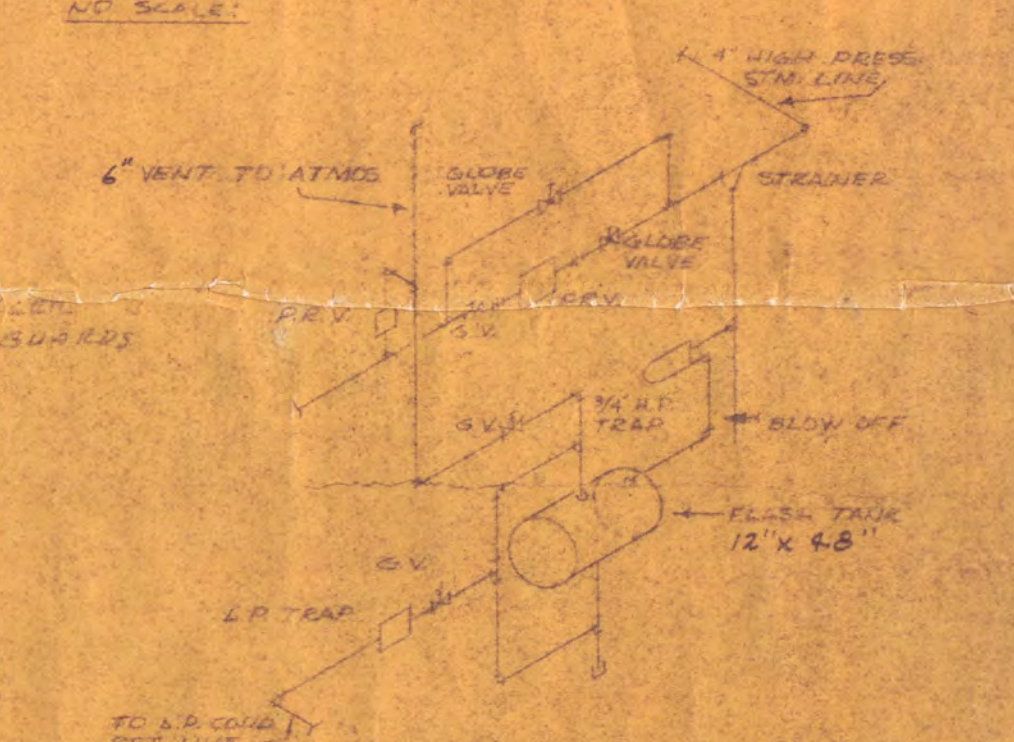
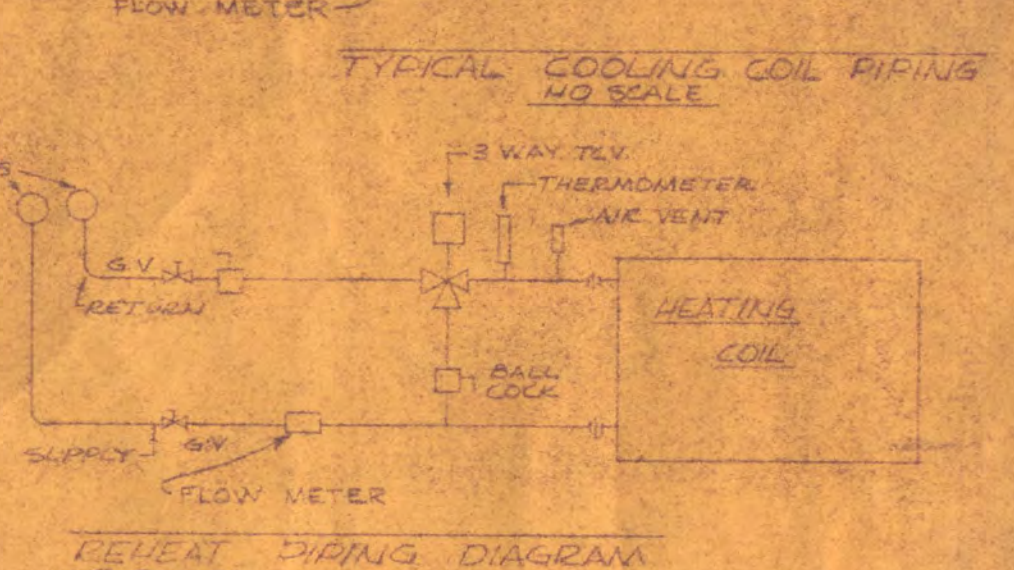
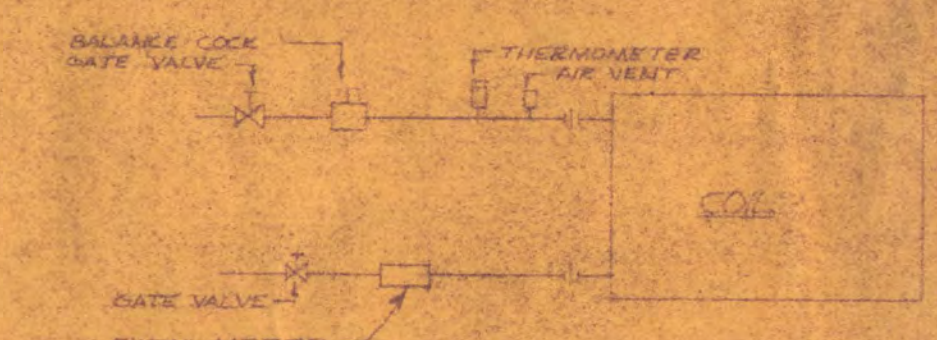
STATE PROJECT NO. 6360174

**M-5**





CHILLED PIPING DIAGRAM  
NO SCALE



ADDENDUM NO. 1  
REVISION DATE - AUG 24, 1973

STATE OF MINNESOTA  
DEPARTMENT OF ADMINISTRATION  
ARCHITECTURAL AND ENGINEERING DIVISION  
HARRIS BUILDING  
ST. PAUL, MINN.

OSM  
ORR, SCHELEN, MAYERON  
AND ASSOCIATES, INC.  
MINNESOTA  
STRUCTURAL ENGINEERS JOHNSTON & SAHLMAN, INC. MPLS. MINN.  
CONSULTING ENGINEERS ORR, SCHELEN, MAYERON & ASSOC., INC. MPLS. MINN.

ADMINISTRATION BUILDING ST. CLOUD STATE COLLEGE  
TRAYNOR, HERMANSON & HAHN ARCHITECTS INC.  
ST. CLOUD, MINNESOTA

DRAWN BY: [Name] CHECKED BY: [Name] DATE: [Date] SHEET NO. [Number] OF [Total]

APPROVED BY: [Signature] PRESIDENT ST. CLOUD STATE COLLEGE

APPROVED BY: [Signature] STATE COLLEGE BOARD

APPROVED BY: [Signature] CHIEF ARCHITECT

STATE PROJECT NO. 4360174