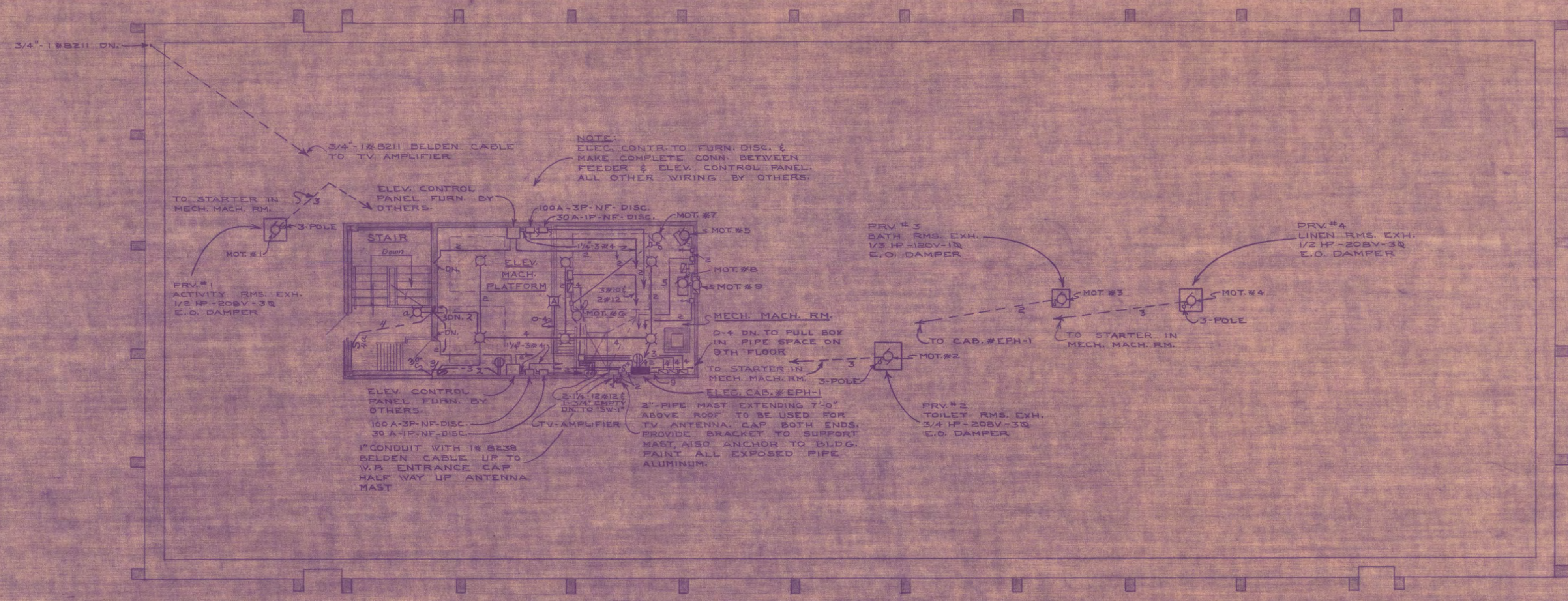
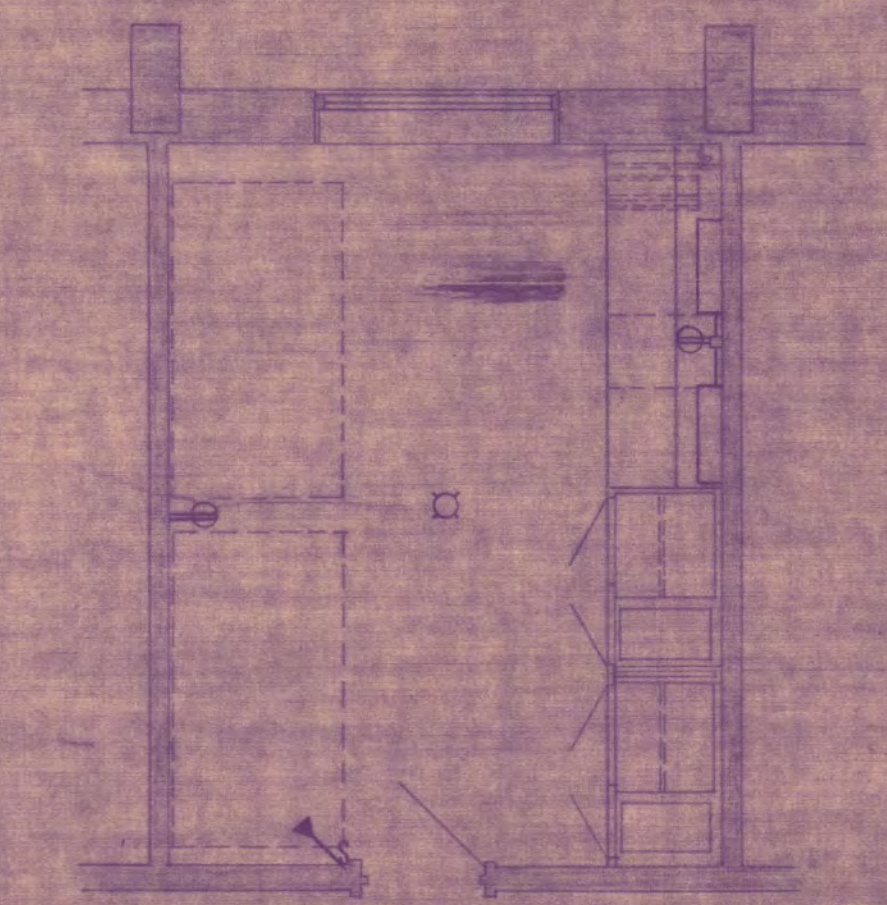


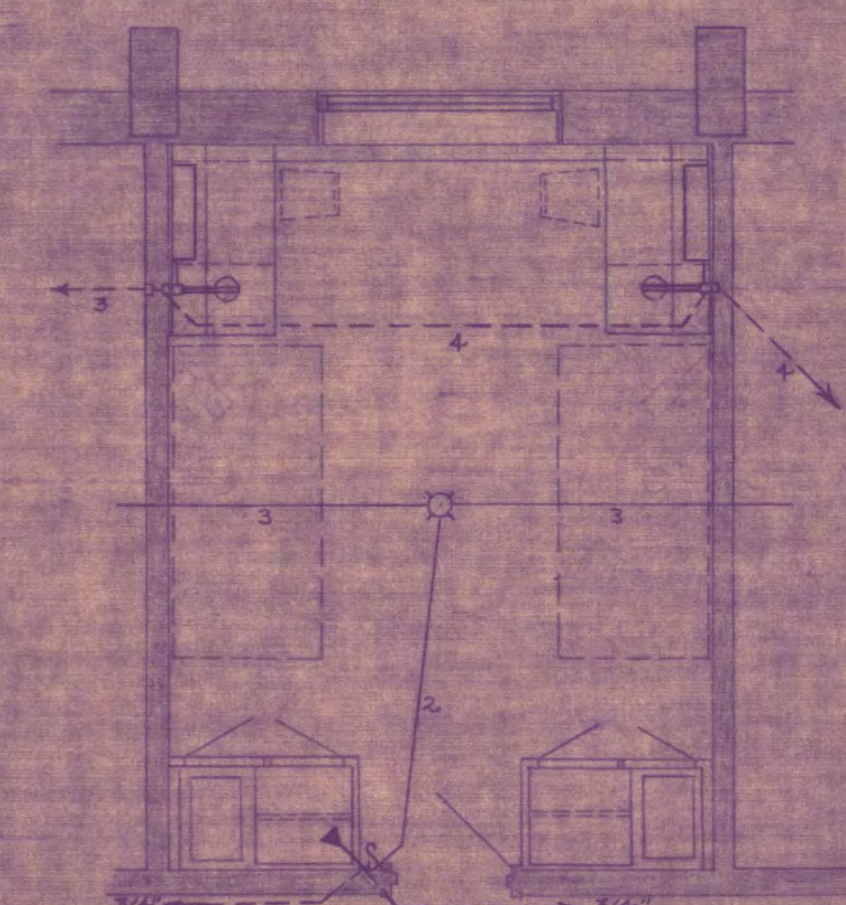
- Workshop Notes**
1. Run single outlet with extension ring and blank cover for elevator light located between 5th and 6th floor levels. Light location is directed later.
  2. Done with 100' cable coil.
  3. 20' cable coil.
  4. Make complete connections to dust collector.
  5. 10' cable coil in 4th floor.
  6. 2' cable coil in 5th and 6th floors and 2' cable between 5th and 6th floors.
  7. 2' cable coil in 5th floor.
  8. 2' cable coil in 6th floor.
  9. 2' cable coil in 6th floor.
  10. 2' cable coil in 6th floor.
  11. 2' cable coil in 6th floor.
  12. 2' cable coil in 6th floor.
  13. 2' cable coil in 6th floor.
  14. 2' cable coil in 6th floor.
  15. 2' cable coil in 6th floor.
  16. 2' cable coil in 6th floor.
  17. 2' cable coil in 6th floor.
  18. 2' cable coil in 6th floor.
  19. 2' cable coil in 6th floor.
  20. 2' cable coil in 6th floor.
  21. 2' cable coil in 6th floor.
  22. 2' cable coil in 6th floor.
  23. 2' cable coil in 6th floor.
  24. 2' cable coil in 6th floor.
  25. 2' cable coil in 6th floor.
  26. 2' cable coil in 6th floor.
  27. 2' cable coil in 6th floor.
  28. 2' cable coil in 6th floor.
  29. 2' cable coil in 6th floor.
  30. 2' cable coil in 6th floor.
  31. 2' cable coil in 6th floor.
  32. 2' cable coil in 6th floor.
  33. 2' cable coil in 6th floor.
  34. 2' cable coil in 6th floor.
  35. 2' cable coil in 6th floor.
  36. 2' cable coil in 6th floor.
  37. 2' cable coil in 6th floor.
  38. 2' cable coil in 6th floor.
  39. 2' cable coil in 6th floor.
  40. 2' cable coil in 6th floor.
  41. 2' cable coil in 6th floor.
  42. 2' cable coil in 6th floor.
  43. 2' cable coil in 6th floor.
  44. 2' cable coil in 6th floor.
  45. 2' cable coil in 6th floor.
  46. 2' cable coil in 6th floor.
  47. 2' cable coil in 6th floor.
  48. 2' cable coil in 6th floor.
  49. 2' cable coil in 6th floor.
  50. 2' cable coil in 6th floor.
  51. 2' cable coil in 6th floor.
  52. 2' cable coil in 6th floor.
  53. 2' cable coil in 6th floor.
  54. 2' cable coil in 6th floor.
  55. 2' cable coil in 6th floor.
  56. 2' cable coil in 6th floor.
  57. 2' cable coil in 6th floor.
  58. 2' cable coil in 6th floor.
  59. 2' cable coil in 6th floor.
  60. 2' cable coil in 6th floor.
  61. 2' cable coil in 6th floor.
  62. 2' cable coil in 6th floor.
  63. 2' cable coil in 6th floor.
  64. 2' cable coil in 6th floor.
  65. 2' cable coil in 6th floor.
  66. 2' cable coil in 6th floor.
  67. 2' cable coil in 6th floor.
  68. 2' cable coil in 6th floor.
  69. 2' cable coil in 6th floor.
  70. 2' cable coil in 6th floor.
  71. 2' cable coil in 6th floor.
  72. 2' cable coil in 6th floor.
  73. 2' cable coil in 6th floor.
  74. 2' cable coil in 6th floor.
  75. 2' cable coil in 6th floor.
  76. 2' cable coil in 6th floor.
  77. 2' cable coil in 6th floor.
  78. 2' cable coil in 6th floor.
  79. 2' cable coil in 6th floor.
  80. 2' cable coil in 6th floor.
  81. 2' cable coil in 6th floor.
  82. 2' cable coil in 6th floor.
  83. 2' cable coil in 6th floor.
  84. 2' cable coil in 6th floor.
  85. 2' cable coil in 6th floor.
  86. 2' cable coil in 6th floor.
  87. 2' cable coil in 6th floor.
  88. 2' cable coil in 6th floor.
  89. 2' cable coil in 6th floor.
  90. 2' cable coil in 6th floor.
  91. 2' cable coil in 6th floor.
  92. 2' cable coil in 6th floor.
  93. 2' cable coil in 6th floor.
  94. 2' cable coil in 6th floor.
  95. 2' cable coil in 6th floor.
  96. 2' cable coil in 6th floor.
  97. 2' cable coil in 6th floor.
  98. 2' cable coil in 6th floor.
  99. 2' cable coil in 6th floor.
  100. 2' cable coil in 6th floor.



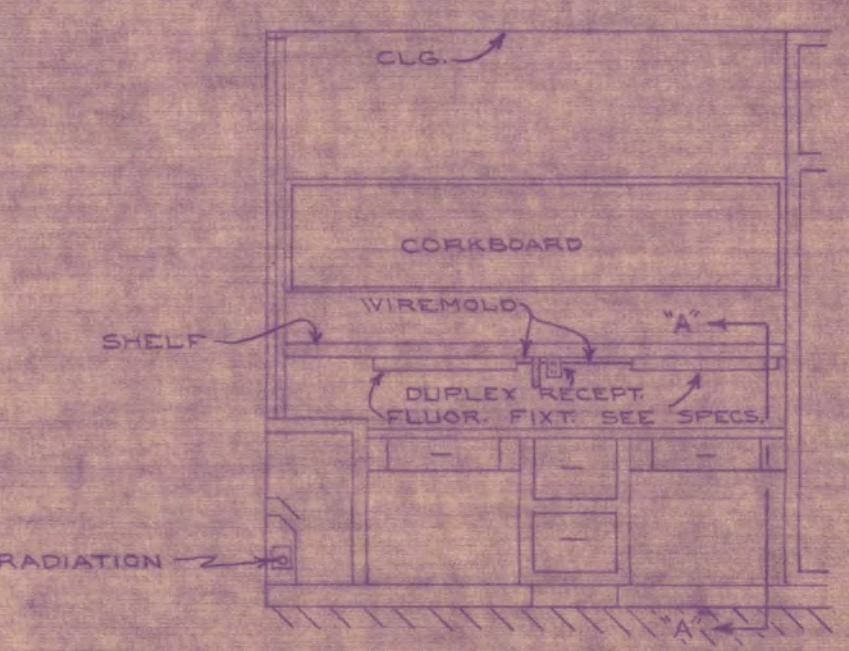
ROOF & PENTHOUSE PLAN  
SCALE - 1/8" = 1'-0"



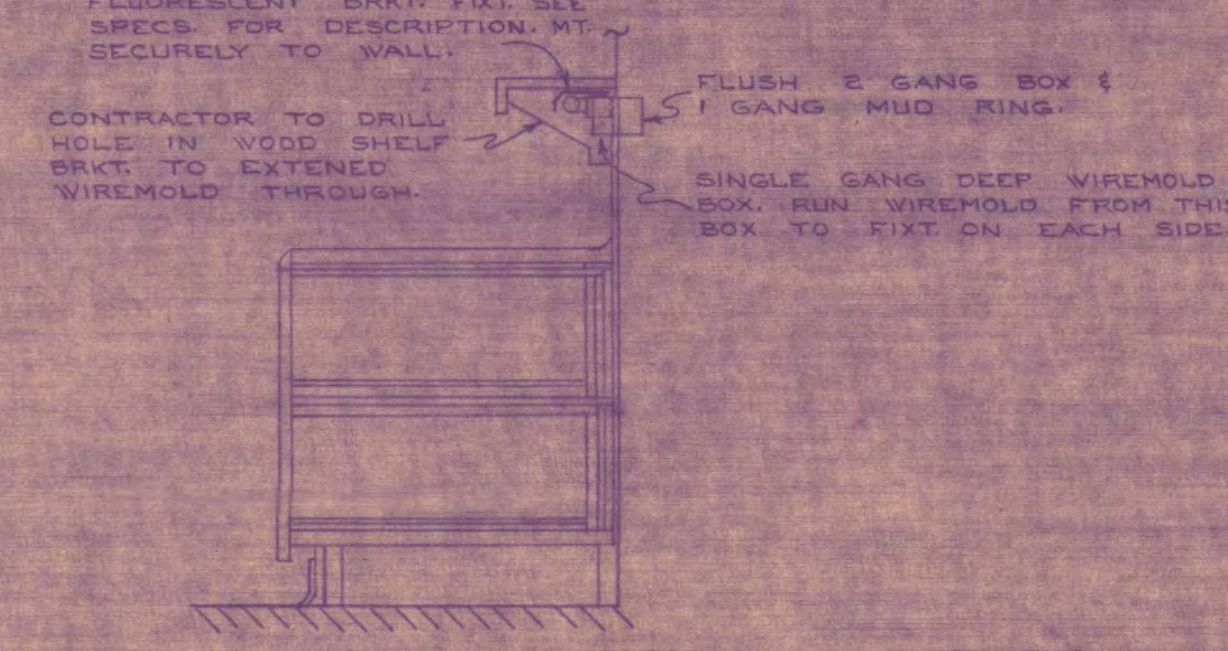
TYPICAL FLOOR PLAN FOR STUDENTS BEDROOMS  
SCALE - 1/4" = 1'-0"



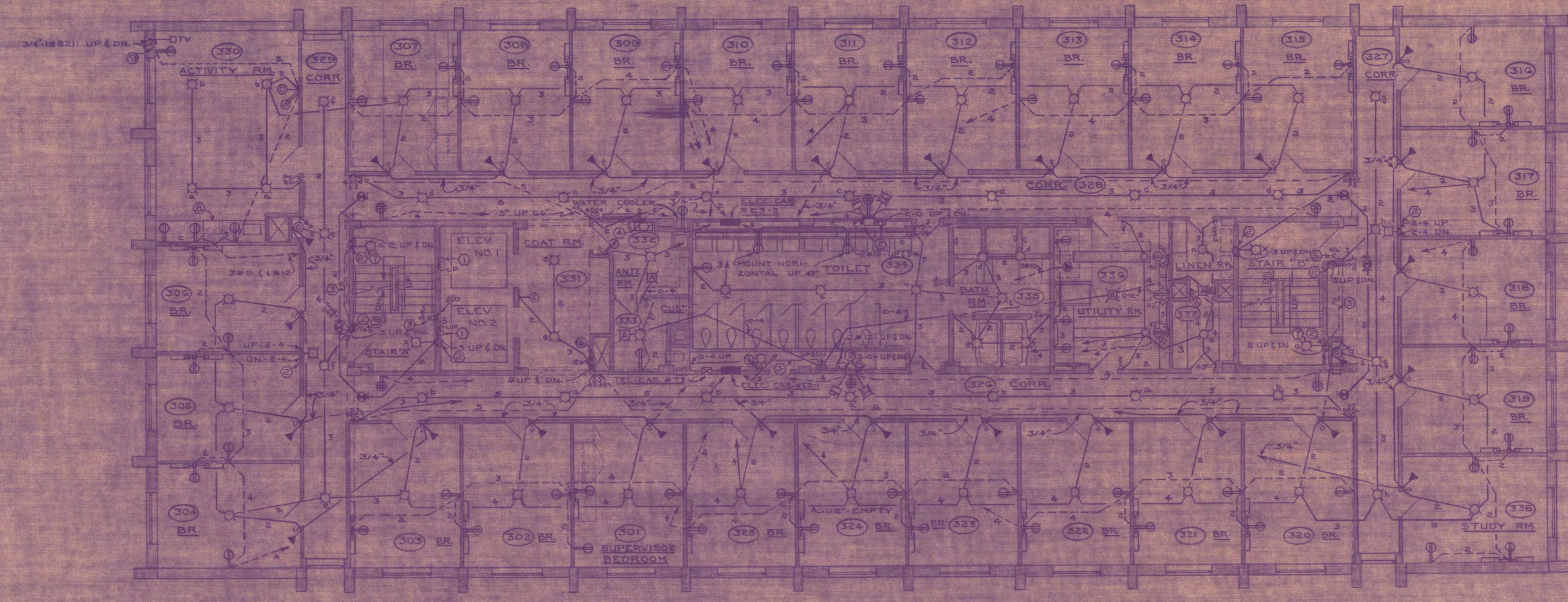
TYPICAL FLOOR PLAN FOR STUDENTS BEDROOMS - ALT. NO. E-3  
SCALE - 1/4" = 1'-0"



ELEV. TYPICAL DESK FOR STUDENTS BED ROOMS  
SCALE - 3/8" = 1'-0"



SECTION "A-A"  
SCALE - 3/4" = 1'-0"



FLOOR PLAN - 3RD, 4TH, 5TH, 6TH, 7TH, 8TH & 9TH FLOORS  
SCALE - 1/8" = 1'-0"

FIRST DIGIT OF ROOM NUMBERS CHANGE TO CORRESPOND WITH FLOOR LEVEL. 3RD FLOOR ROOM NUMBERS SHOWN.

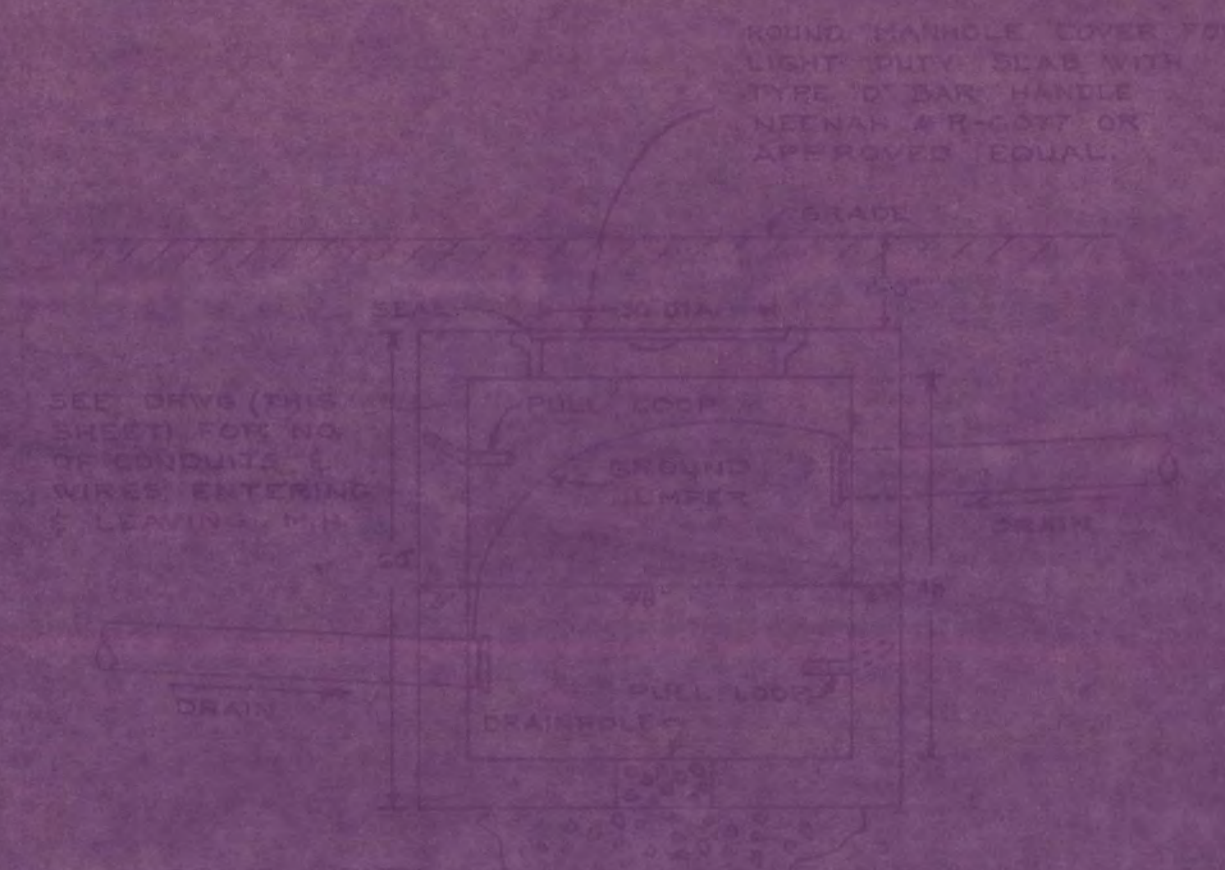


GIRLS DORMITORY ST. CLOUD STATE COLLEGE ST. CLOUD, MINNESOTA		
MARK NO. 1263-7	JACKSON MAHN ASSOCIATES, INC. ST. CLOUD, MINNESOTA	SHEET NO. E-4
DATE 5/1/64	DR. SCHLIMM, WATSON & ASSOCIATES, INC. CONSULTING ENGINEERS ST. CLOUD, MINNESOTA	PROJECT NO. E-1A
APPROVED BY	APPROVED BY	
APPROVED BY	APPROVED BY	
APPROVED BY	APPROVED BY	





SECTION THROUGH NEW SILENCE



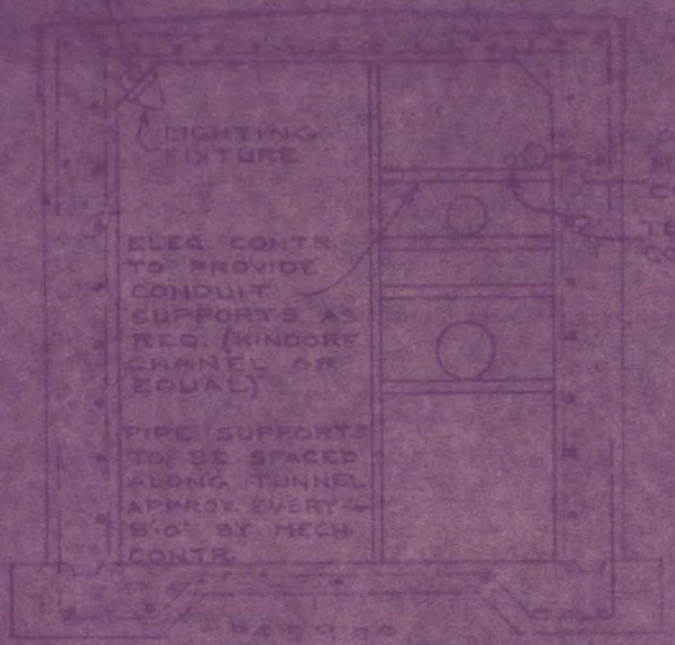
EXPANSION JOINT DETAIL



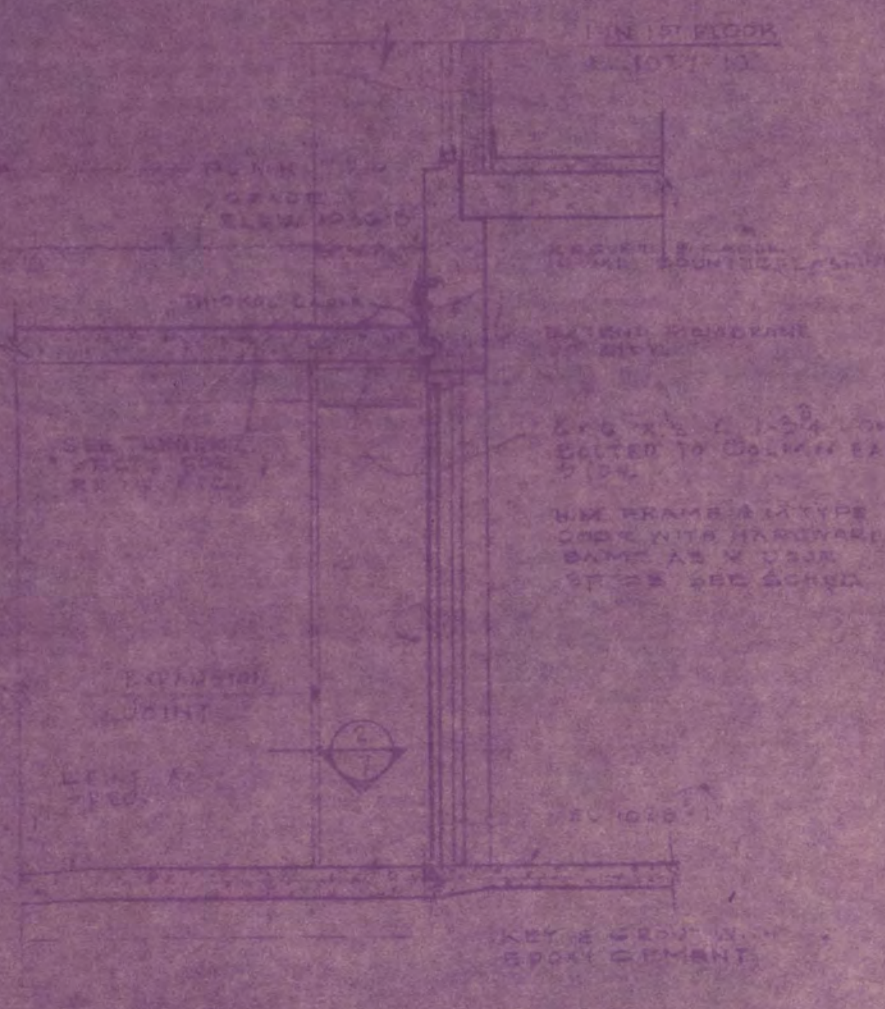
NOTES:  
ALL CONDUITS MUST IDENTIFY ALLS  
CHAMFER ENDS BEFORE LEAD  
ALL CONDUITS CONTAINING PIPES  
WIRE SHALL BE RUN ON PIPES  
BACK AS SHOWN ON DETAIL  
THIS SHEET.

TUNNEL PLAN - ALTERNATE E-2

SCALE 1/8" = 1'-0"



TUNNEL CROSS SECTION

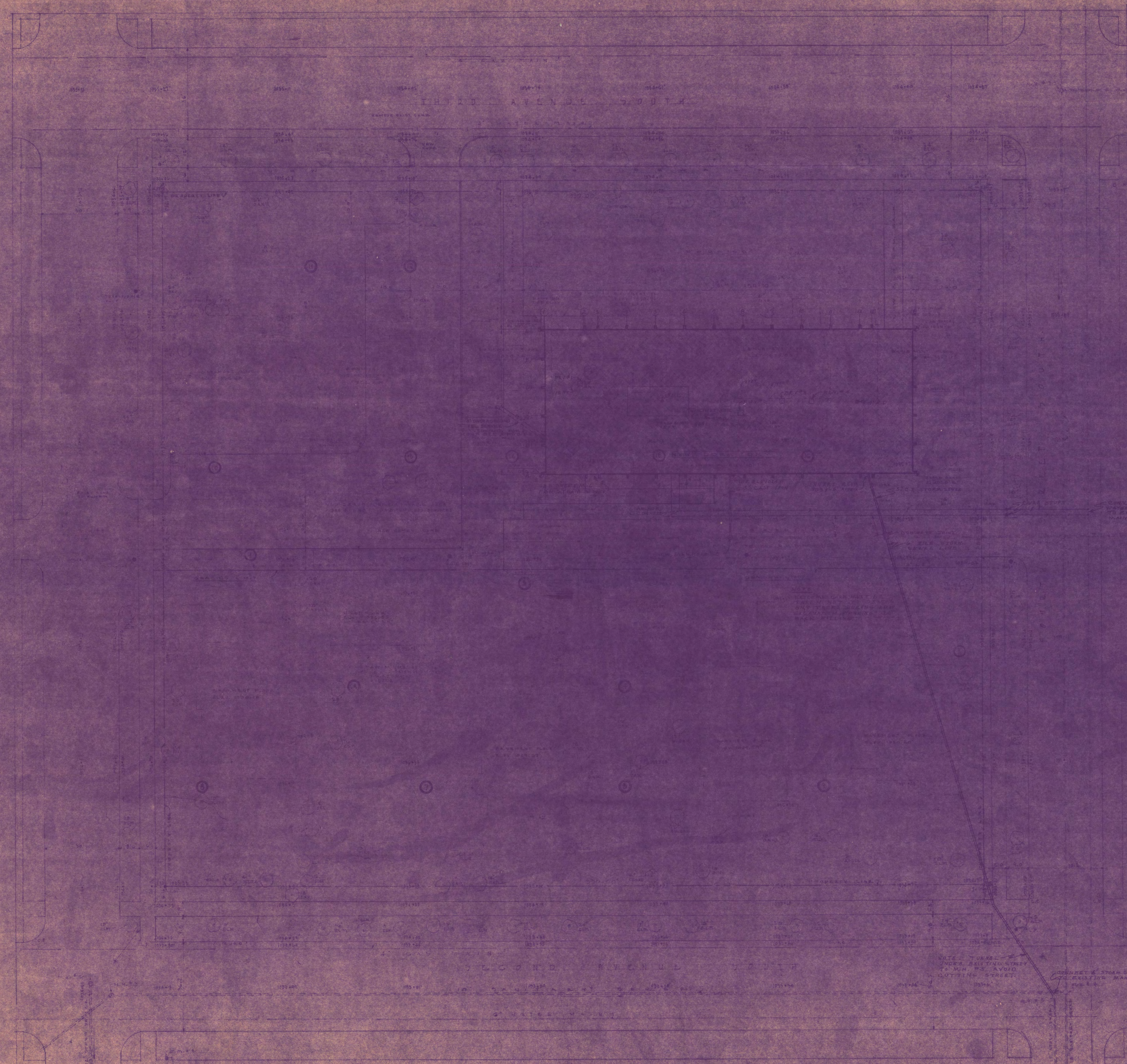


TUNNEL CROSS SECTION

<b>GIRLS DORMITORY ST. CLOUD STATE COLLEGE ST. CLOUD, MINNESOTA</b>	
DATE: 1/25/41	PROJECT: GIRLS DORMITORY
DESIGNED BY: JACKSON HAWN ASSOCIATES, INC.	ARCHITECT: JACKSON HAWN ASSOCIATES, INC.
ENGINEERED BY: ORR SCHNEIDER-MAYERSON & ASSOCIATES, INC.	CONSULTING ENGINEERS: ORR SCHNEIDER-MAYERSON & ASSOCIATES, INC.
DATE: 5/1/41	PROJECT: GIRLS DORMITORY
APPROVED BY: _____	PROJECT: GIRLS DORMITORY
APPROVED BY: _____	PROJECT: GIRLS DORMITORY
APPROVED BY: _____	PROJECT: GIRLS DORMITORY

DESIGN MARK DATA  
FOR CONCRETE WORK  
ALL DIMS AND 100 AND 50  
BY 1/25/41





**ON WHOLE DATA**

1	1924.75	103.50
2	1924.75	103.50
3	1924.75	103.50
4	1924.75	103.50
5	1924.75	103.50
6	1924.75	103.50
7	1924.75	103.50
8	1924.75	103.50

**ON PART DATA**

1	1924.75	103.50
2	1924.75	103.50
3	1924.75	103.50
4	1924.75	103.50
5	1924.75	103.50
6	1924.75	103.50
7	1924.75	103.50
8	1924.75	103.50

**ON 2. TOP HYDRANT N.B. CORNER**

**ON 3. TOP HYDRANT N.B. CORNER**

**ON 4. TOP HYDRANT N.B. CORNER**

**ON 5. TOP HYDRANT N.B. CORNER**

**ON 6. TOP HYDRANT N.B. CORNER**

**ON 7. TOP HYDRANT N.B. CORNER**

**ON 8. TOP HYDRANT N.B. CORNER**

**DETAIL NUMBER LEGEND**

INDEX FIGURE INDICATES DRAWING NUMBER  
LOWER FIGURE INDICATES DETAIL NUMBER

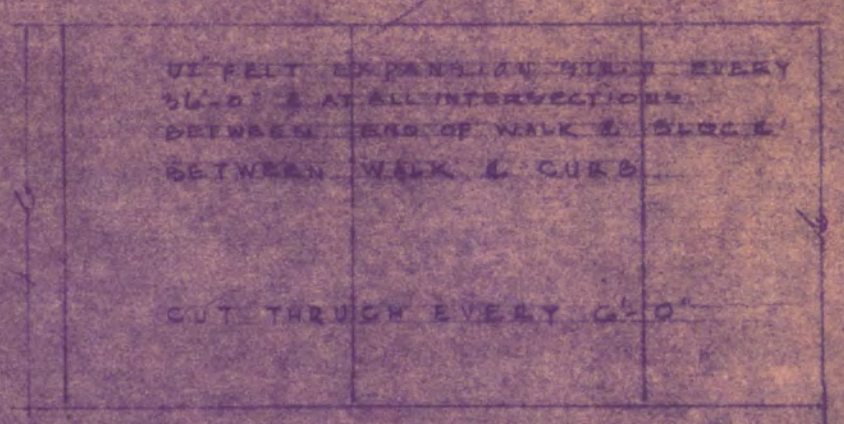
INDICATES WALL OR FLOOR AND IS  
A SECTION DETAIL. INDICATES  
DIRECTION TOWARD WHICH TO LOOK.

INDICATES TANK OR ABOVE GROUND OR  
ELEVATION DETAIL. POINT INDICATES  
DIRECTION TOWARD WHICH TO LOOK.

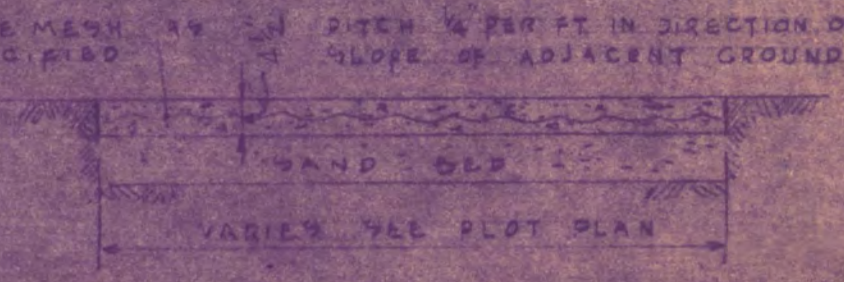
INDICATES  
ELEVATION DETAIL. POINT INDICATES  
DIRECTION TOWARD WHICH TO LOOK.

**MATERIAL LEGEND**

CONCRETE	REINFORCED CONCRETE	BRICK
CEMENT PLASTER	ROOFING	GLASS
WOOD	INSULATION	PAINT
IRON	STEEL	ASBESTOS
COPPER	LEAD	ZINC
ALUMINUM	BRASS	STAINLESS STEEL
GLASS BLOCK	TRANSPIRENT GLASS	GLASS CURTAIN WALL
GLASS CURTAIN WALL	GLASS CURTAIN WALL	GLASS CURTAIN WALL



**PLAN OF SIDEWALK**



**TYPICAL SIDEWALK DETAIL**



**TYPICAL CURB & GUTTER DETAIL**



**NOTE LEGEND**

1. ALL WORK SHALL BE DONE IN ACCORDANCE WITH THE SPECIFICATIONS AND CONDITIONS OF CONTRACT.
2. ALL MATERIALS SHALL BE OF THE BEST QUALITY AND SHALL BE SUBJECT TO INSPECTION AND APPROVAL BY THE ENGINEER.
3. ALL WORK SHALL BE DONE IN ACCORDANCE WITH THE LATEST EDITIONS OF THE BUILDING CODES AND REGULATIONS.
4. ALL WORK SHALL BE DONE IN ACCORDANCE WITH THE LATEST EDITIONS OF THE NATIONAL BUILDING CODES AND REGULATIONS.
5. ALL WORK SHALL BE DONE IN ACCORDANCE WITH THE LATEST EDITIONS OF THE NATIONAL BUILDING CODES AND REGULATIONS.
6. ALL WORK SHALL BE DONE IN ACCORDANCE WITH THE LATEST EDITIONS OF THE NATIONAL BUILDING CODES AND REGULATIONS.
7. ALL WORK SHALL BE DONE IN ACCORDANCE WITH THE LATEST EDITIONS OF THE NATIONAL BUILDING CODES AND REGULATIONS.
8. ALL WORK SHALL BE DONE IN ACCORDANCE WITH THE LATEST EDITIONS OF THE NATIONAL BUILDING CODES AND REGULATIONS.
9. ALL WORK SHALL BE DONE IN ACCORDANCE WITH THE LATEST EDITIONS OF THE NATIONAL BUILDING CODES AND REGULATIONS.
10. ALL WORK SHALL BE DONE IN ACCORDANCE WITH THE LATEST EDITIONS OF THE NATIONAL BUILDING CODES AND REGULATIONS.

**GIRLS DORMITORY  
ST. CLOUD STATE COLLEGE  
ST. CLOUD, MINNESOTA**

DATE	12-23-17	PROJECT NO.	ME-1
DESIGNED BY	JACKSON, NAHN ASSOCIATES, INC.	OF	6
CHECKED BY	ST. CLOUD, MINNESOTA	PROJECTING	E-1A
APPROVED BY	ORR, SCHELEN, MATSON & ASSOCIATES, INC.		
	CONSULTING ENGINEERS		
	THE CLARK AVENUE, MINNEAPOLIS 2, MINN.		
DATE	5-1-18		
APPROVED BY			
APPROVED BY			
APPROVED BY			

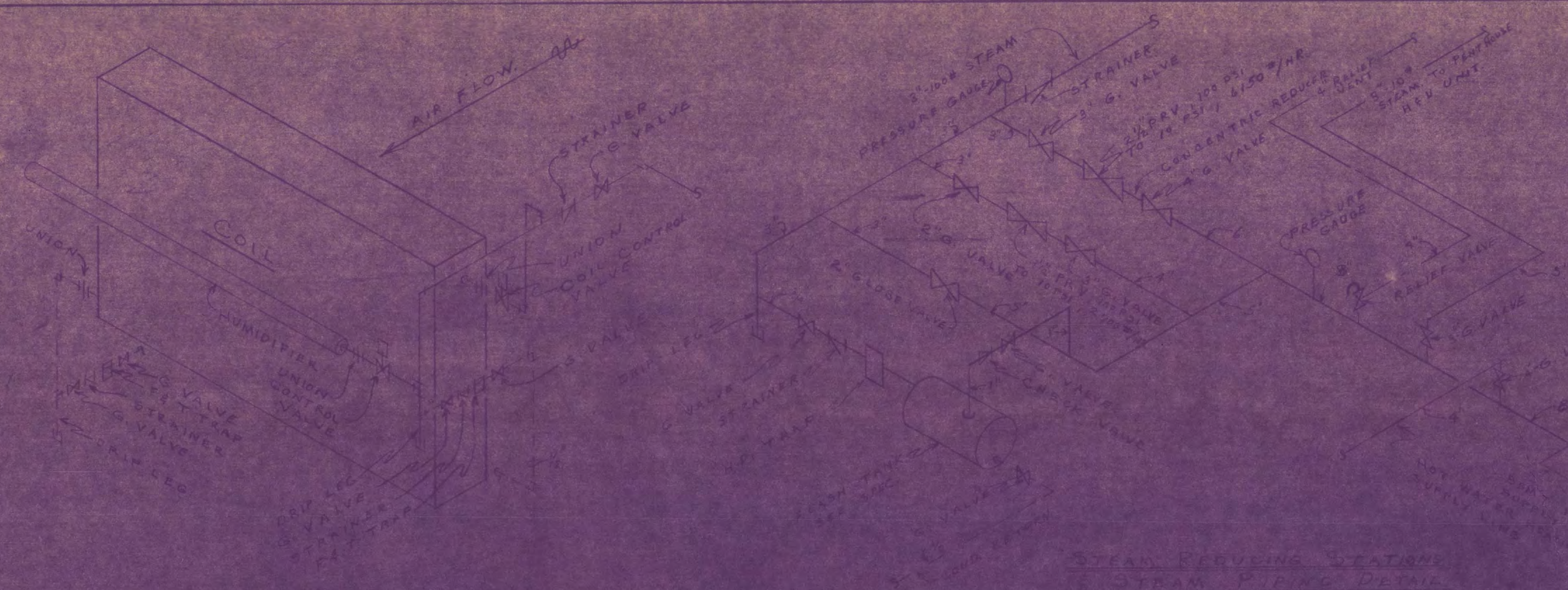
I hereby certify that this plan, specification, or report was prepared by me or under my direct supervision and that I am a duly Registered Professional Engineer under the laws of the State of Minnesota.

*John G. Johnson*  
John G. Johnson, Reg. No. 3086

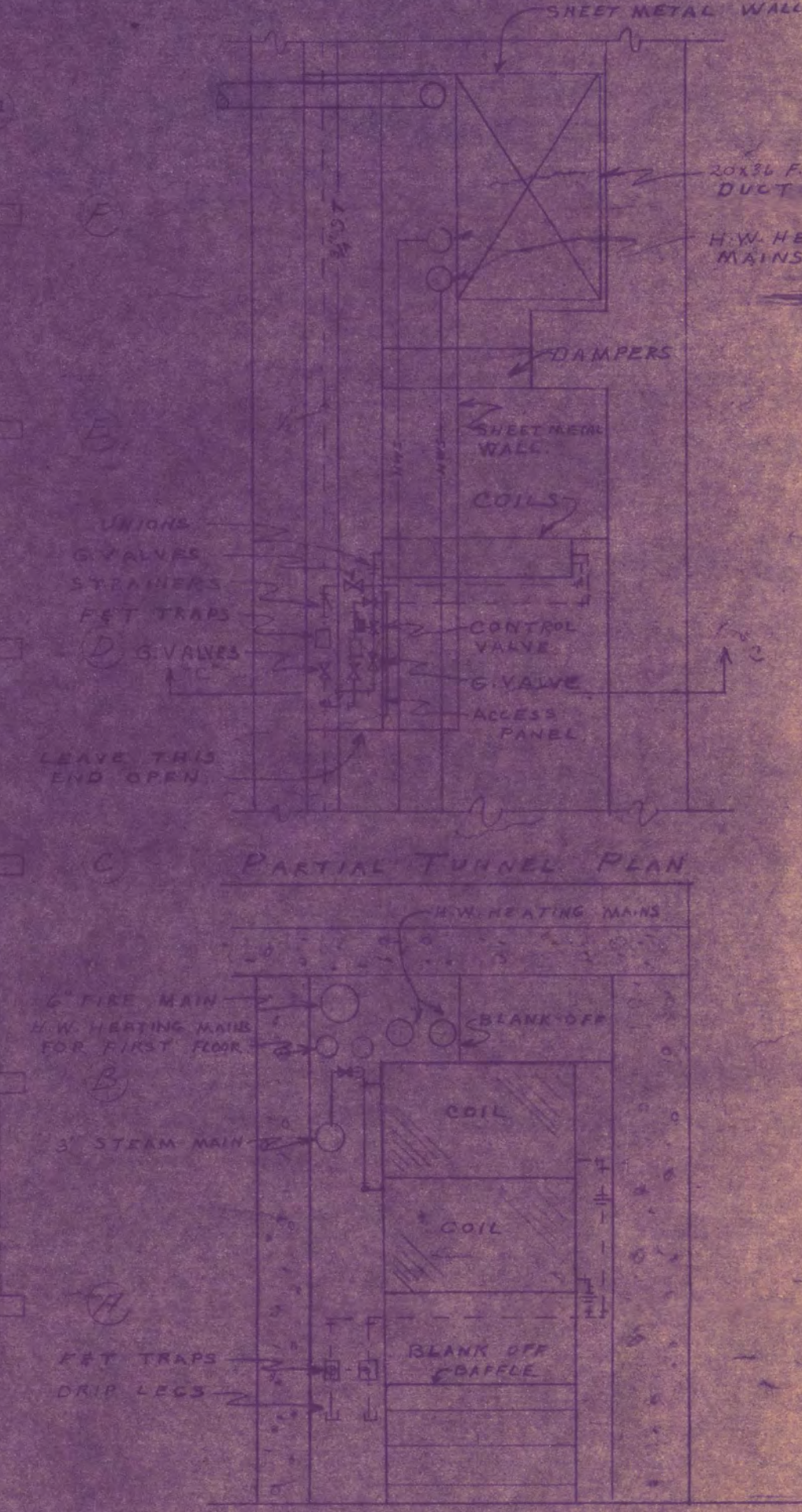
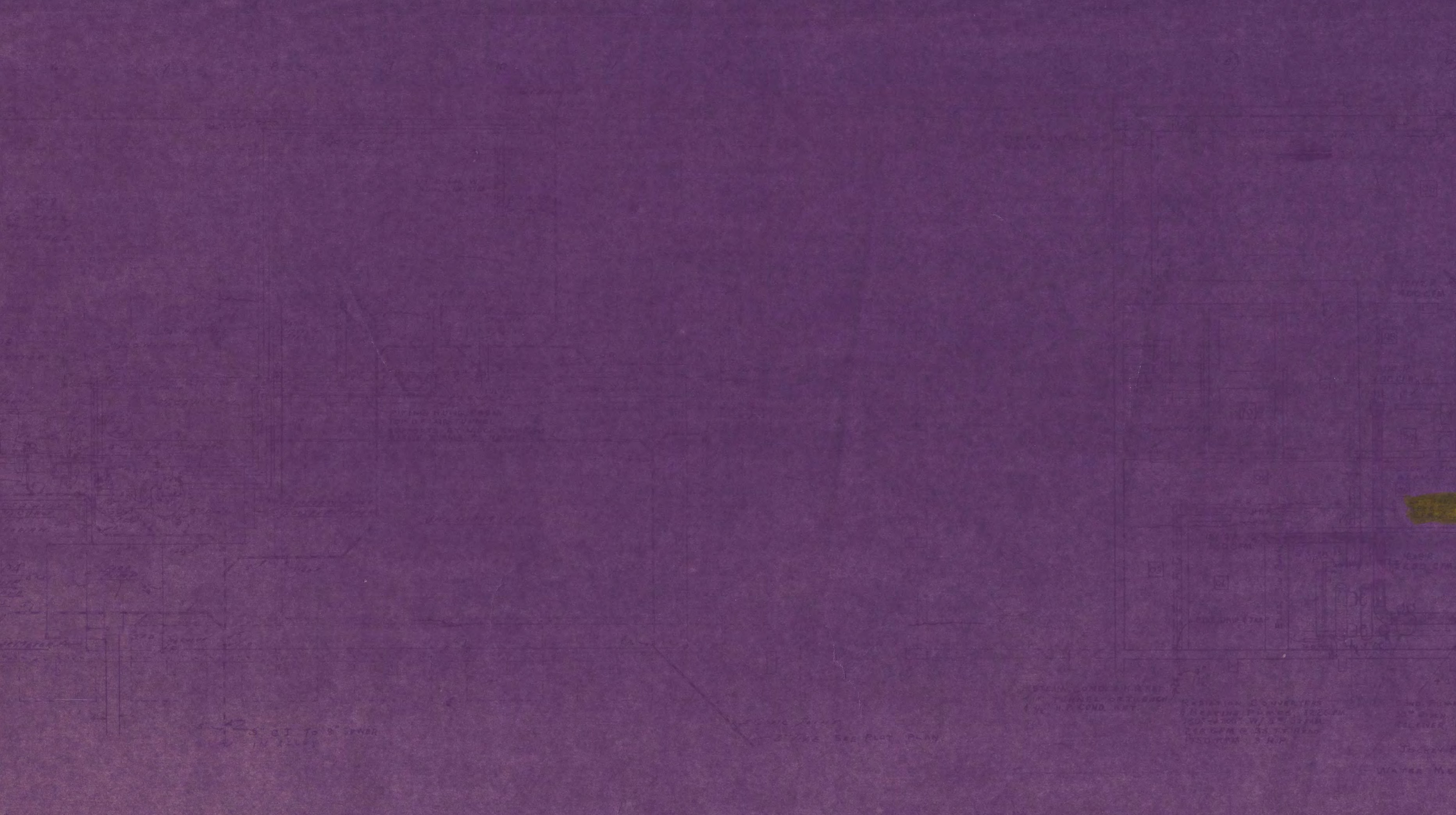
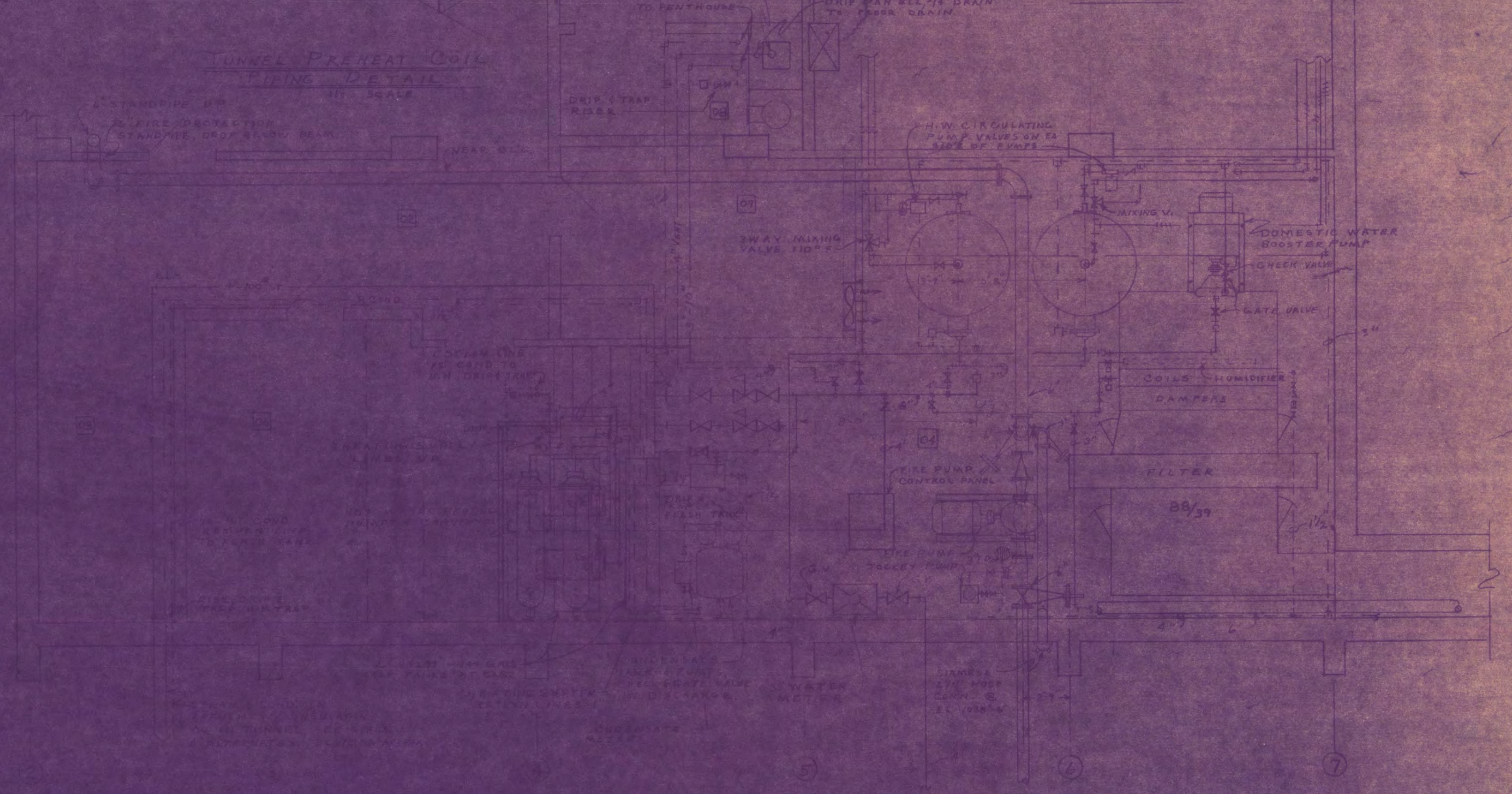
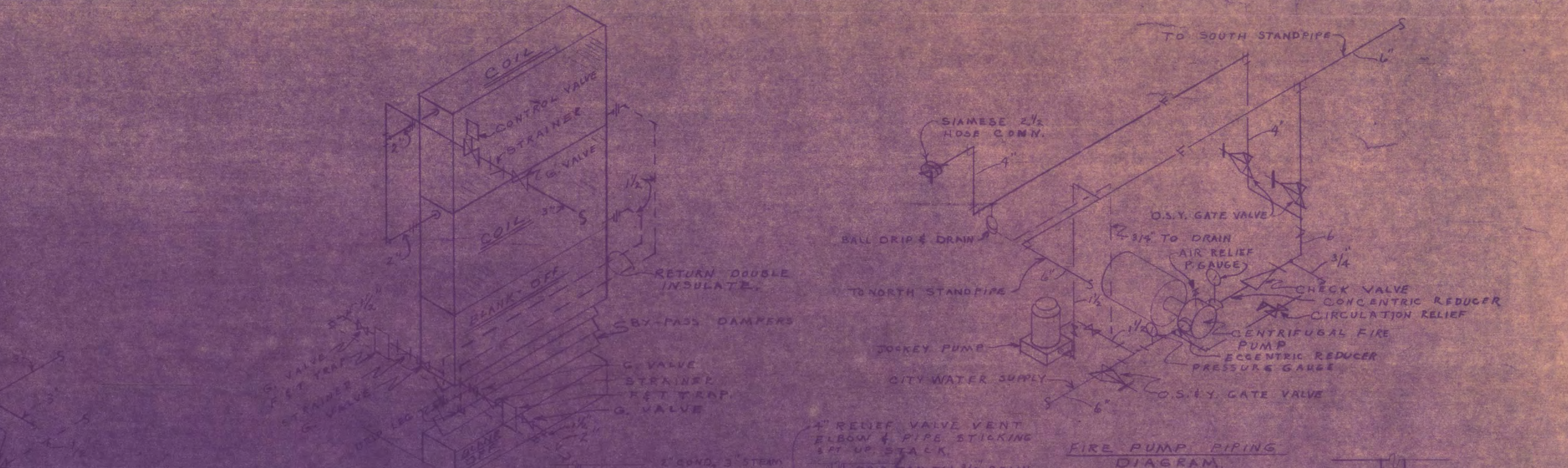


**PIPING SYMBOLS**

DR	DUMPED CONDENSATE RETURN
HR	H.W. CONDENSATE RETURN
WR	WINDR HEATS RETURN
MP	LOW PRESSURE STEAM
HP	HIGH PRESSURE STEAM
WR	WATER RETURN
HW	HOT WATER SUPPLY
HW	COLD WATER
HW	DISINFECTED HOT WATER
HW	CIRCULATED HOT WATER
HW	CIRCULATED HOT WATER



**COIL PREHEAT COIL PIPING DETAIL**



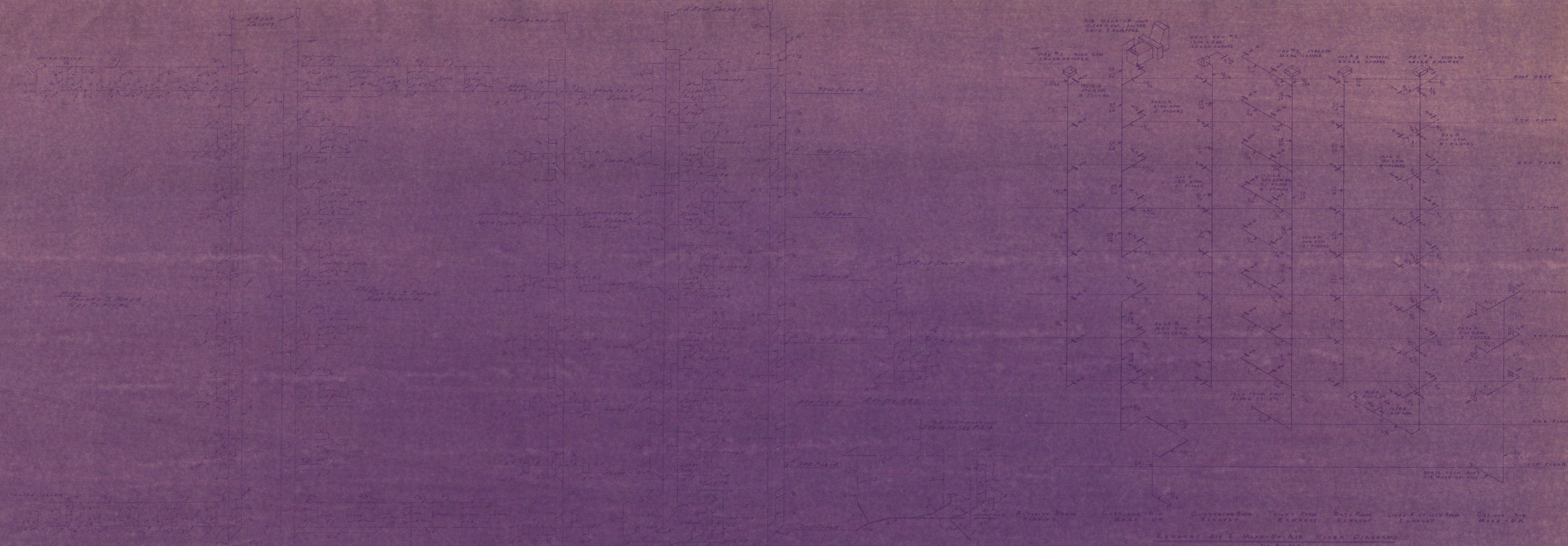
**BASEMENT & UNDERGROUND PLUMBING PLAN**  
SCALE 1/8" = 1'-0"

**BASEMENT HEATING & VENTILATION PLAN**  
SCALE 1/8" = 1'-0"

**SECTION "C-C" OF TUNNEL PREHEAT COIL LAYOUT**  
SCALE 1/8" = 1'-0"

<b>GIRLS DORMITORY</b>		SHEET NO. <b>M-2</b>
<b>ST. CLOUD STATE COLLEGE</b>		
<b>ST. CLOUD, MINNESOTA</b>		OF 6
DRAWN BY <b>OBS &amp; SCHILLEN-MAYSON</b>	ENGINEERS	
DATE <b>5-1-44</b>	PROJECT NO.	<b>E-1A</b>
APPROVED BY		





EXHAUST AIR & MAKE-UP AIR RISER DIAGRAMS  
NO SCALE

FRESH AIR INTAKE RISER DIAGRAMS  
NO SCALE

FIRST FLOOR HEATING & VENTILATION  
SCALE 1/8" = 1'-0"

SECTION B-B DUCT SHAFT TUNNEL  
EXHAUST AIR FAN & PREHEAT COILS  
SCALE 3/8" = 1'-0"

SECTION A-A FRESH AIR  
INTAKE AND TUNNEL SECTION  
SCALE 3/8" = 1'-0"

Coil and Fan Specifications

COIL # 1	1200 CFM, 100° F
COIL # 2	1200 CFM, 100° F
COIL # 3	1200 CFM, 100° F
COIL # 4	1200 CFM, 100° F
COIL # 5	1200 CFM, 100° F
COIL # 6	1200 CFM, 100° F
COIL # 7	1200 CFM, 100° F
COIL # 8	1200 CFM, 100° F
COIL # 9	1200 CFM, 100° F
COIL # 10	1200 CFM, 100° F
COIL # 11	1200 CFM, 100° F
COIL # 12	1200 CFM, 100° F
COIL # 13	1200 CFM, 100° F
COIL # 14	1200 CFM, 100° F
COIL # 15	1200 CFM, 100° F
COIL # 16	1200 CFM, 100° F
COIL # 17	1200 CFM, 100° F
COIL # 18	1200 CFM, 100° F
COIL # 19	1200 CFM, 100° F
COIL # 20	1200 CFM, 100° F
COIL # 21	1200 CFM, 100° F
COIL # 22	1200 CFM, 100° F
COIL # 23	1200 CFM, 100° F
COIL # 24	1200 CFM, 100° F
COIL # 25	1200 CFM, 100° F
COIL # 26	1200 CFM, 100° F
COIL # 27	1200 CFM, 100° F
COIL # 28	1200 CFM, 100° F
COIL # 29	1200 CFM, 100° F
COIL # 30	1200 CFM, 100° F
COIL # 31	1200 CFM, 100° F
COIL # 32	1200 CFM, 100° F
COIL # 33	1200 CFM, 100° F
COIL # 34	1200 CFM, 100° F
COIL # 35	1200 CFM, 100° F
COIL # 36	1200 CFM, 100° F
COIL # 37	1200 CFM, 100° F
COIL # 38	1200 CFM, 100° F
COIL # 39	1200 CFM, 100° F
COIL # 40	1200 CFM, 100° F
COIL # 41	1200 CFM, 100° F
COIL # 42	1200 CFM, 100° F
COIL # 43	1200 CFM, 100° F
COIL # 44	1200 CFM, 100° F
COIL # 45	1200 CFM, 100° F
COIL # 46	1200 CFM, 100° F
COIL # 47	1200 CFM, 100° F
COIL # 48	1200 CFM, 100° F
COIL # 49	1200 CFM, 100° F
COIL # 50	1200 CFM, 100° F
COIL # 51	1200 CFM, 100° F
COIL # 52	1200 CFM, 100° F
COIL # 53	1200 CFM, 100° F
COIL # 54	1200 CFM, 100° F
COIL # 55	1200 CFM, 100° F
COIL # 56	1200 CFM, 100° F
COIL # 57	1200 CFM, 100° F
COIL # 58	1200 CFM, 100° F
COIL # 59	1200 CFM, 100° F
COIL # 60	1200 CFM, 100° F
COIL # 61	1200 CFM, 100° F
COIL # 62	1200 CFM, 100° F
COIL # 63	1200 CFM, 100° F
COIL # 64	1200 CFM, 100° F
COIL # 65	1200 CFM, 100° F
COIL # 66	1200 CFM, 100° F
COIL # 67	1200 CFM, 100° F
COIL # 68	1200 CFM, 100° F
COIL # 69	1200 CFM, 100° F
COIL # 70	1200 CFM, 100° F
COIL # 71	1200 CFM, 100° F
COIL # 72	1200 CFM, 100° F
COIL # 73	1200 CFM, 100° F
COIL # 74	1200 CFM, 100° F
COIL # 75	1200 CFM, 100° F
COIL # 76	1200 CFM, 100° F
COIL # 77	1200 CFM, 100° F
COIL # 78	1200 CFM, 100° F
COIL # 79	1200 CFM, 100° F
COIL # 80	1200 CFM, 100° F
COIL # 81	1200 CFM, 100° F
COIL # 82	1200 CFM, 100° F
COIL # 83	1200 CFM, 100° F
COIL # 84	1200 CFM, 100° F
COIL # 85	1200 CFM, 100° F
COIL # 86	1200 CFM, 100° F
COIL # 87	1200 CFM, 100° F
COIL # 88	1200 CFM, 100° F
COIL # 89	1200 CFM, 100° F
COIL # 90	1200 CFM, 100° F
COIL # 91	1200 CFM, 100° F
COIL # 92	1200 CFM, 100° F
COIL # 93	1200 CFM, 100° F
COIL # 94	1200 CFM, 100° F
COIL # 95	1200 CFM, 100° F
COIL # 96	1200 CFM, 100° F
COIL # 97	1200 CFM, 100° F
COIL # 98	1200 CFM, 100° F
COIL # 99	1200 CFM, 100° F
COIL # 100	1200 CFM, 100° F

- Room Schedule
- 101 - Vestibule
  - 102 - Lobby
  - 103 - Reception Lobby
  - 104 - Waiting Room
  - 105 - Reception
  - 106 - Dressing Room
  - 107 - Shower
  - 108 - Bathroom
  - 109 - Bath
  - 110 - Storage
  - 111 - Bath Room
  - 112 - Corridor
  - 113 - Restroom
  - 114 - Living Room
  - 115 - Vestibule
  - 116 - Living Room
  - 117 - Bath Room
  - 118 - Corridor
  - 119 - Restroom
  - 120 - Bath Room
  - 121 - Corridor
  - 122 - Corridor
  - 123 - Corridor
  - 124 - Telephone Booth
  - 125 - Women's Toilet
  - 126 - Men's Toilet
  - 127 - Storage & Linen
  - 128 - Hall Room
  - 129 - Corridor
  - 130 - Director's Office

**GIRLS DORMITORY  
ST. CLOUD STATE COLLEGE  
ST. CLOUD, MINNESOTA**

FORM NO. 1243-7  
JACKSON-HAHN ASSOCIATES, INC.  
ST. CLOUD, MINNESOTA

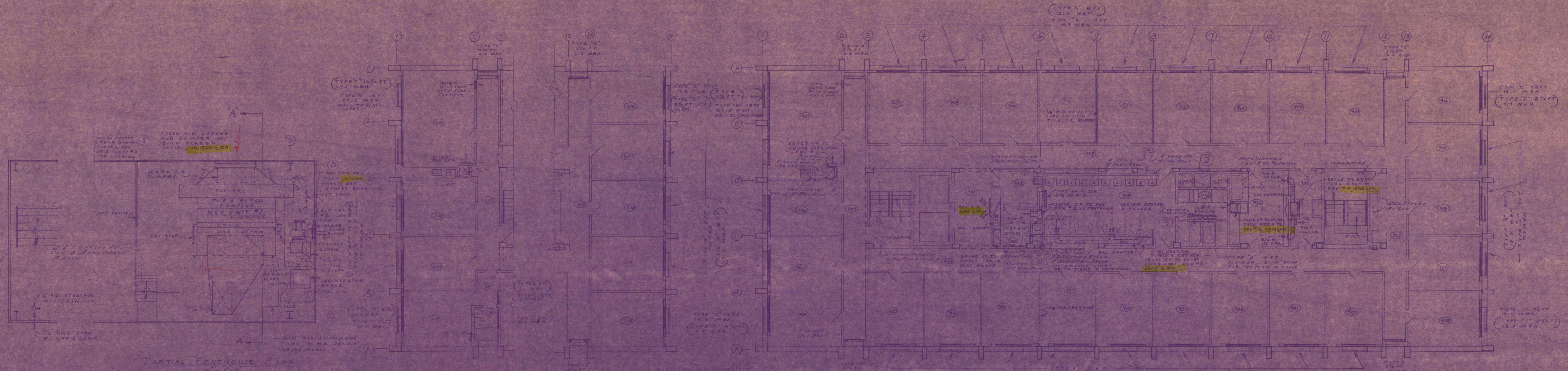
DESIGNED BY: DR. SCHELEN-WATSON & ASSOCIATES, INC.  
CONSULTING ENGINEERS  
100 CONN. AVENUE, ST. CLOUD, MINN.

DATE: 5-1-64

PROJECT NO. M-3 OF 6

REVISIONS: E-1A



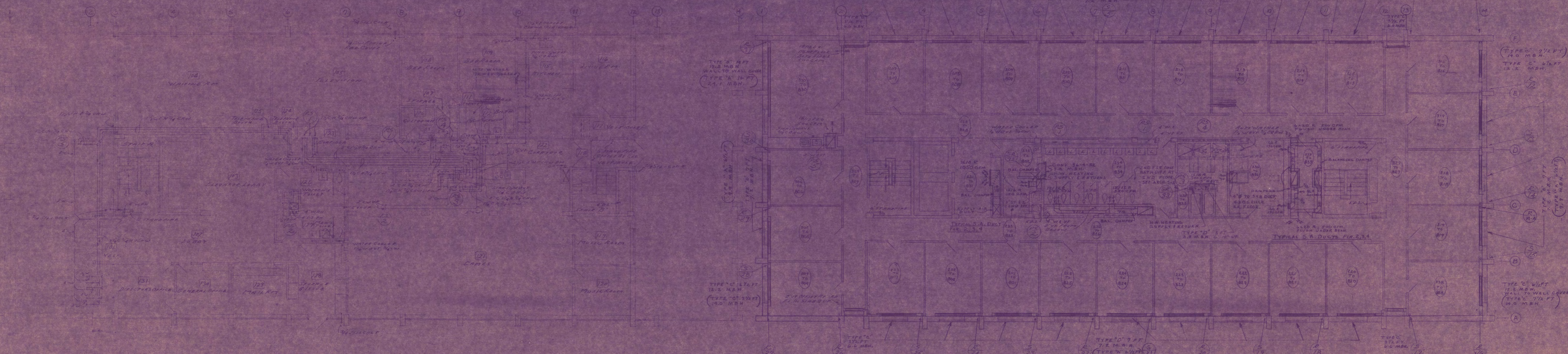


PARTIAL PENTHOUSE PLAN  
SCALE 1/8" = 1'-0"

PARTIAL SECOND FLOOR PLAN  
SCALE 1/8" = 1'-0"

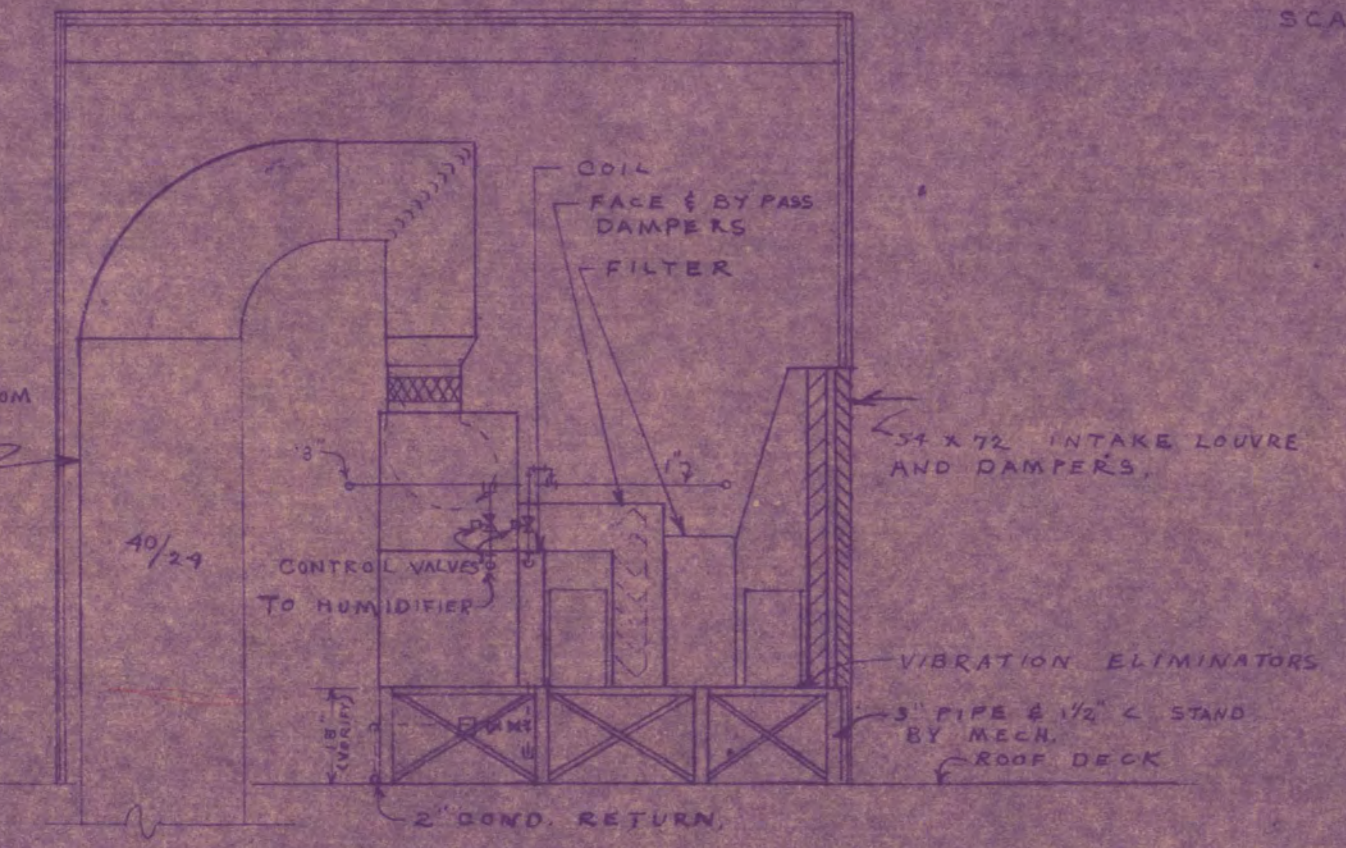
4TH FLOOR PLAN  
SCALE 1/8" = 1'-0"

NOTE  
RADIATOR SIZES SHOWN IN  
PARENS ARE SIZES FOR ALTERNATE  
RADIATION ON ALTERNATE SHALL HAVE  
WALL COVER.

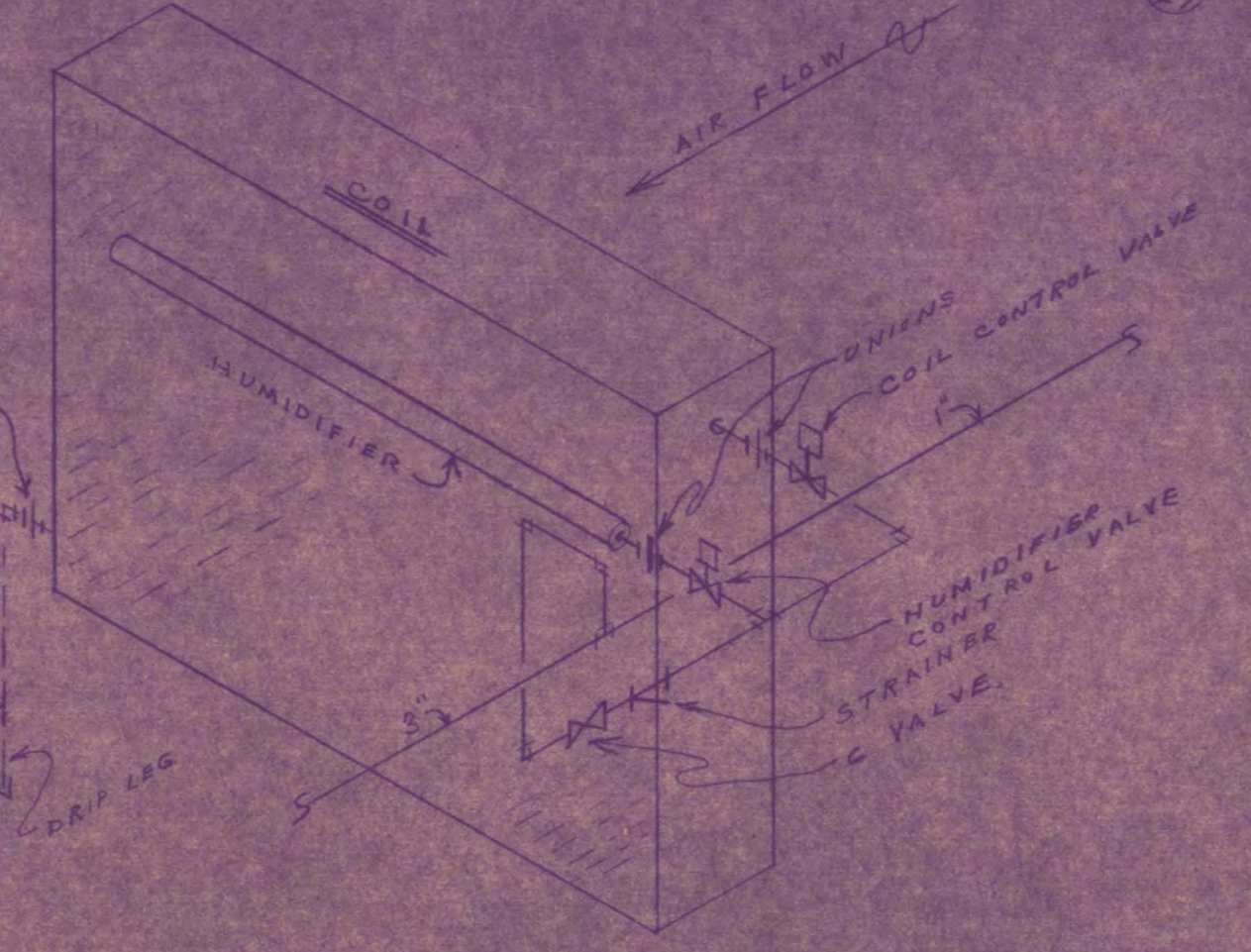


FIRST FLOOR PLUMBING PLAN  
SCALE 1/8" = 1'-0"

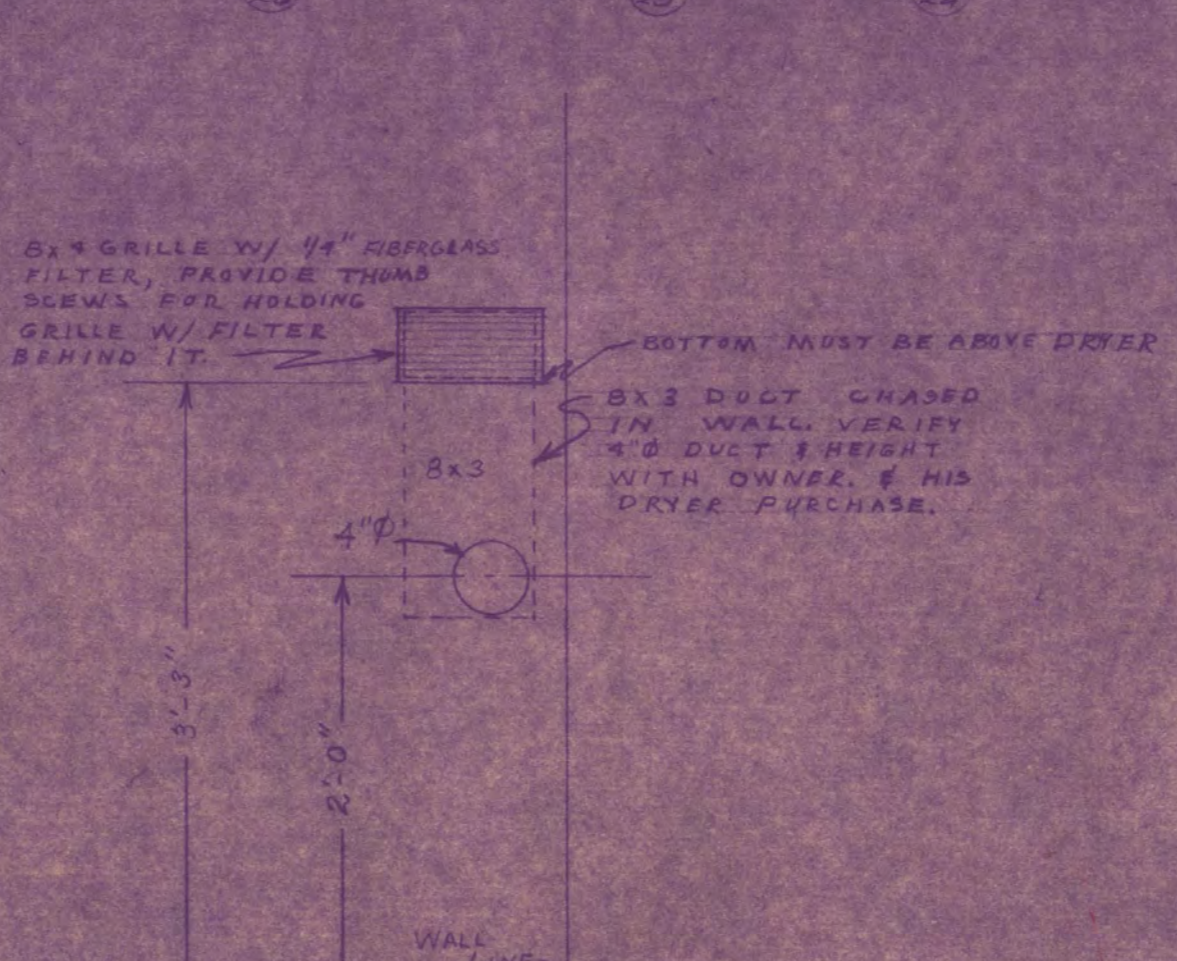
TYPICAL FLOOR PLANS - PARTIAL 2ND, 3RD THRU 8TH  
SCALE 1/8" = 1'-0"



SECTION A-A THRU  
PENTHOUSE HEV UNIT  
SCALE 1/2" = 1'-0"



PENTHOUSE HEV UNIT COIL  
PIPING DETAIL  
NO SCALE



DRYER VENT DETAIL EACH FLOOR  
SCALE 1/2" = 1'-0"

Room No.	Room No.
101 - Yarn Room	201 - Supervisor's Bedroom
102 - Lobby	202 - 201 - 202 - Bedroom
103 - Reception Room	203 - 203 - 203 - Bedroom
104 - Waiting Room	204 - 204 - 204 - Bedroom
105 - Division	205 - 205 - 205 - Bedroom
106 - Custodian	206 - 206 - 206 - Bedroom
107 - Custodian	207 - 207 - 207 - Bedroom
108 - Custodian	208 - 208 - 208 - Bedroom
109 - Custodian	209 - 209 - 209 - Bedroom
110 - Hall	210 - 210 - 210 - Bedroom
111 - Storage	211 - 211 - 211 - Bedroom
112 - Storage	212 - 212 - 212 - Bedroom
113 - Storage	213 - 213 - 213 - Bedroom
114 - Kitchen	214 - 214 - 214 - Bedroom
115 - Kitchen	215 - 215 - 215 - Bedroom
116 - Kitchen	216 - 216 - 216 - Bedroom
117 - Kitchen	217 - 217 - 217 - Bedroom
118 - Kitchen	218 - 218 - 218 - Bedroom
119 - Kitchen	219 - 219 - 219 - Bedroom
120 - Kitchen	220 - 220 - 220 - Bedroom
121 - Kitchen	221 - 221 - 221 - Bedroom
122 - Kitchen	222 - 222 - 222 - Bedroom
123 - Kitchen	223 - 223 - 223 - Bedroom
124 - Kitchen	224 - 224 - 224 - Bedroom
125 - Kitchen	225 - 225 - 225 - Bedroom
126 - Kitchen	226 - 226 - 226 - Bedroom
127 - Kitchen	227 - 227 - 227 - Bedroom
128 - Kitchen	228 - 228 - 228 - Bedroom
129 - Kitchen	229 - 229 - 229 - Bedroom
130 - Kitchen	230 - 230 - 230 - Bedroom
131 - Kitchen	231 - 231 - 231 - Bedroom



**GIRLS DORMITORY**  
ST. CLOUD STATE COLLEGE  
ST. CLOUD, MINNESOTA

OWNER: JACKSON HAIN ASSOCIATES, INC.  
ARCHITECTS: ST. CLOUD, MINNESOTA

DESIGNED BY: ORR SCHELEN MATORON & ASSOCIATES, INC.  
CONSULTING ENGINEERS  
100 CLARK AVENUE, MINNEAPOLIS 2, MINN.

DATE: 5-1-44  
REVISION: APPROVED BY: [Signature]  
APPROVED BY: [Signature]  
APPROVED BY: [Signature]

SHEET NO. M-4  
OF 6  
PROJECT NO. E-1A