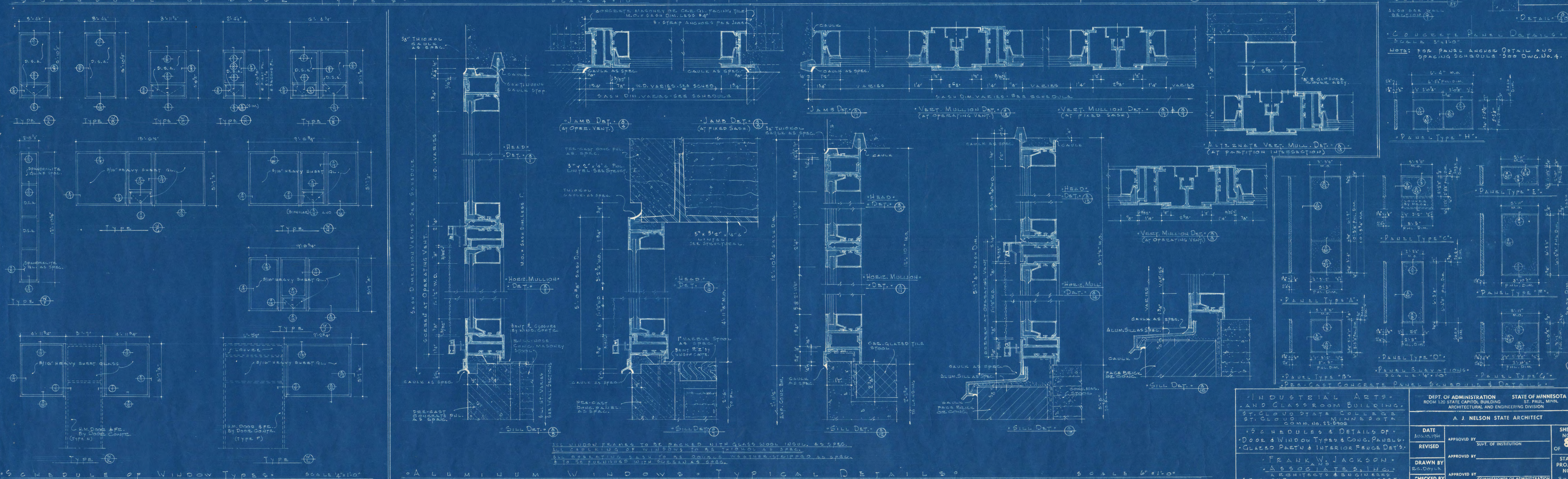
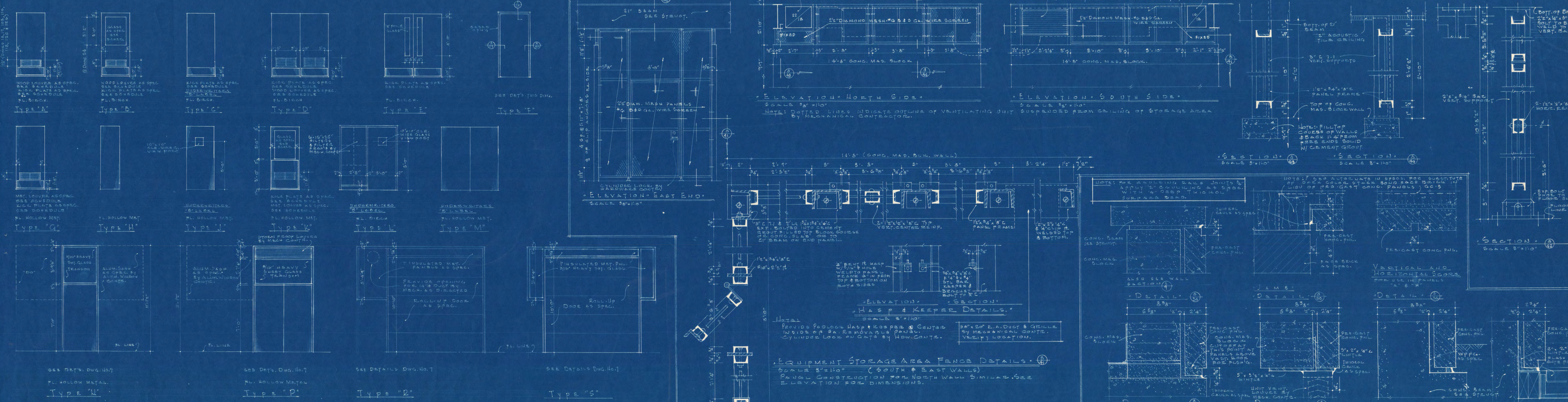
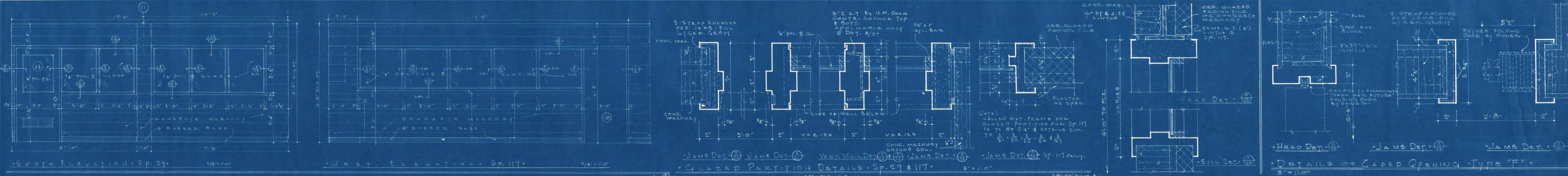
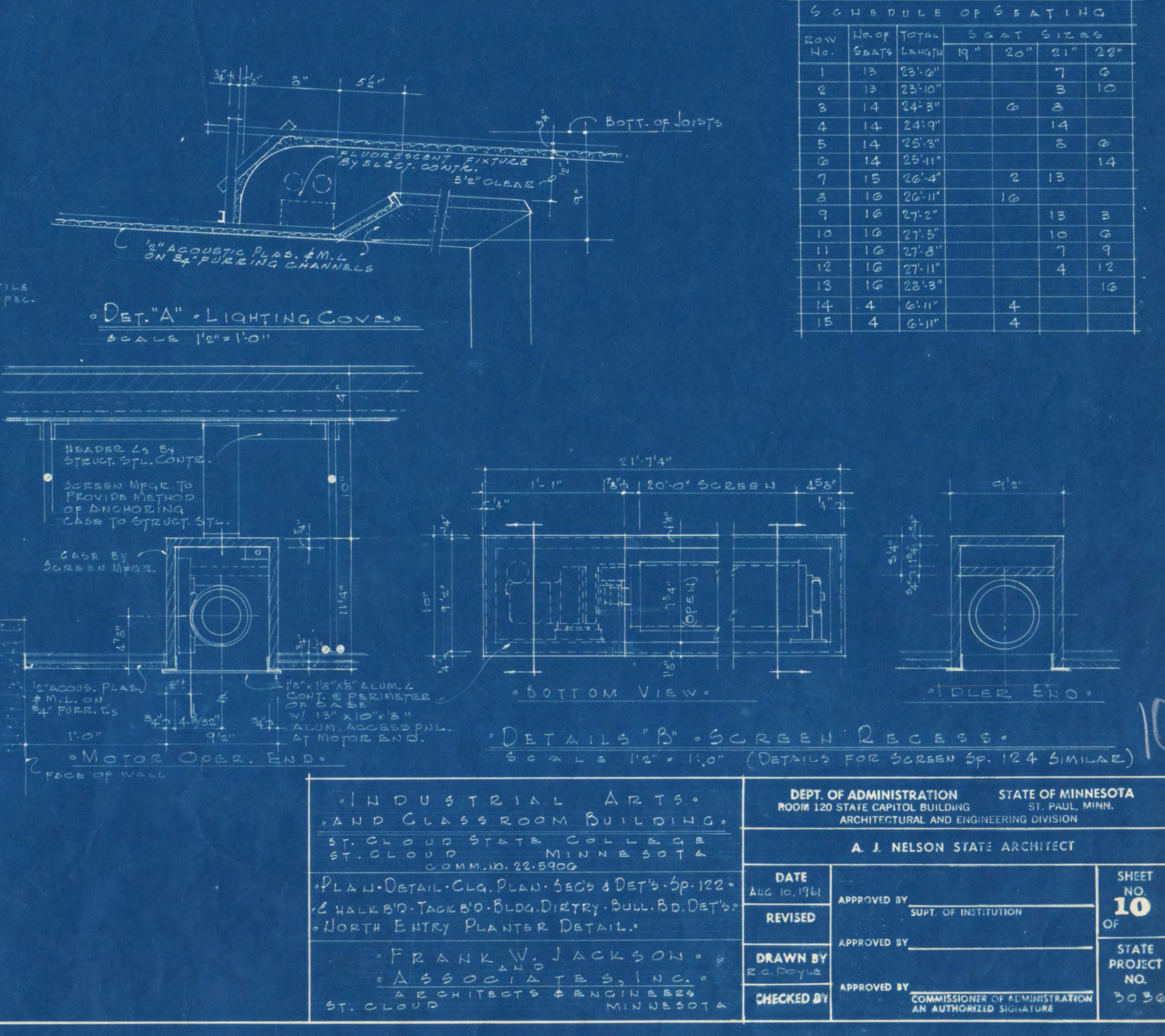
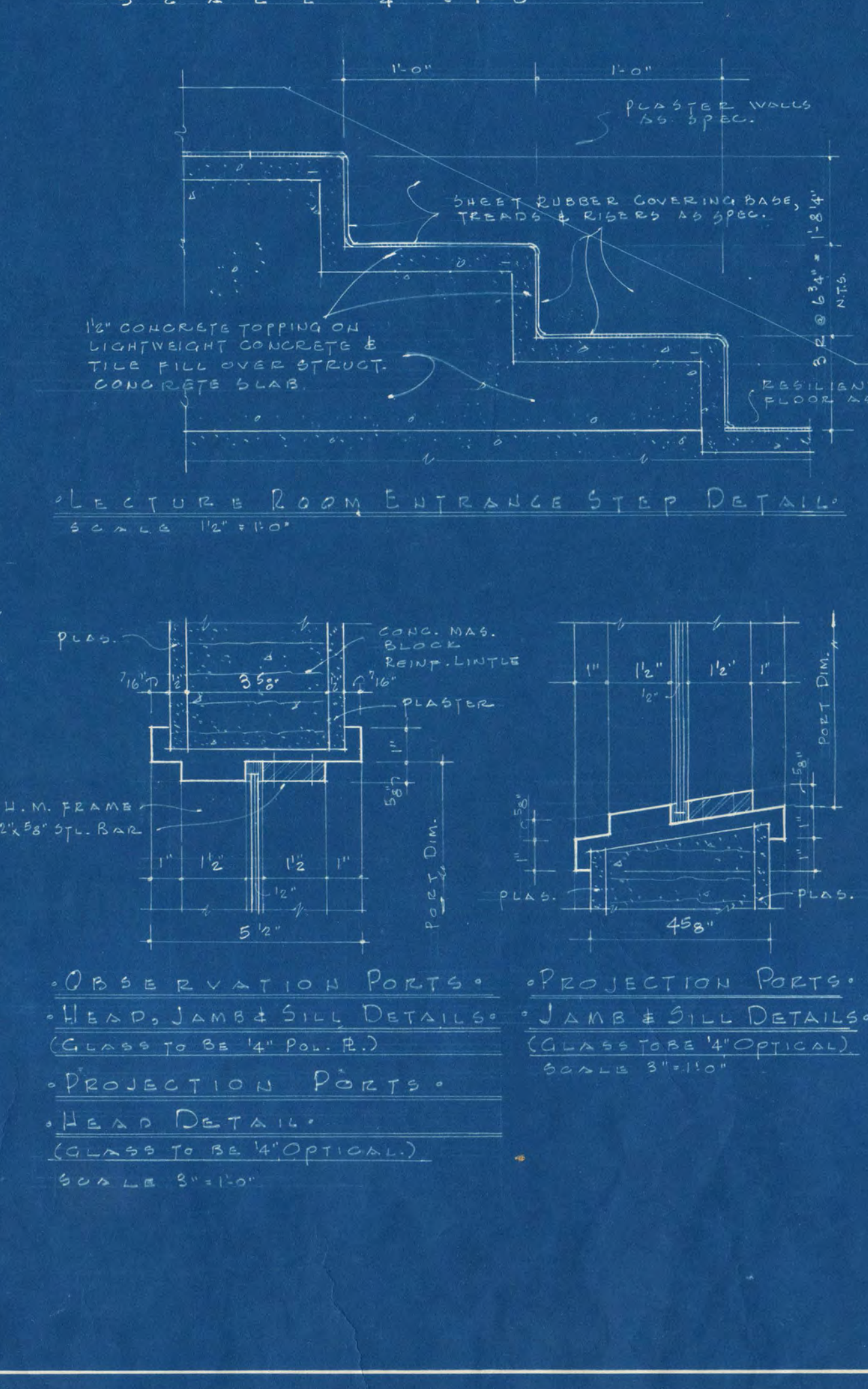
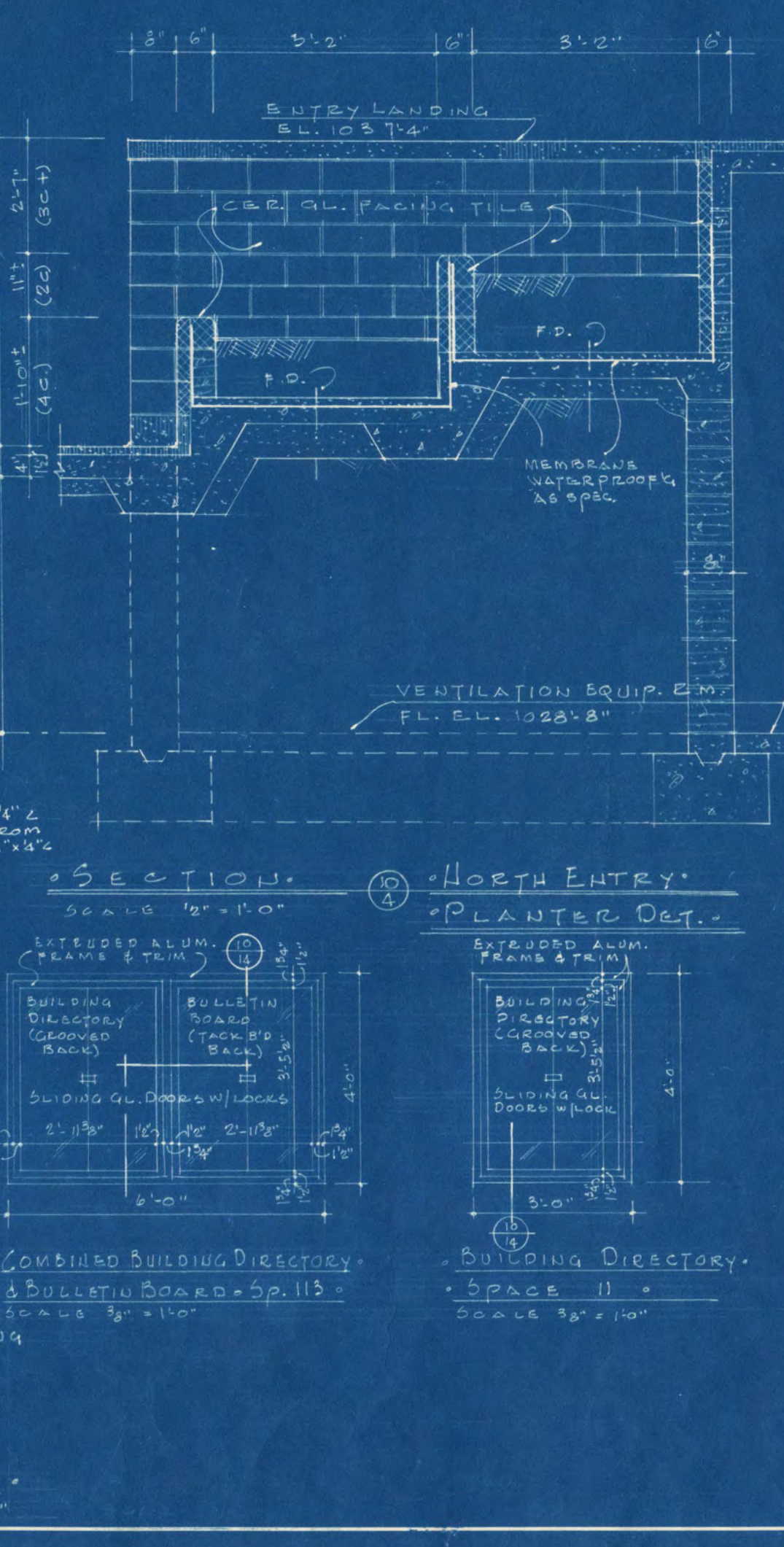
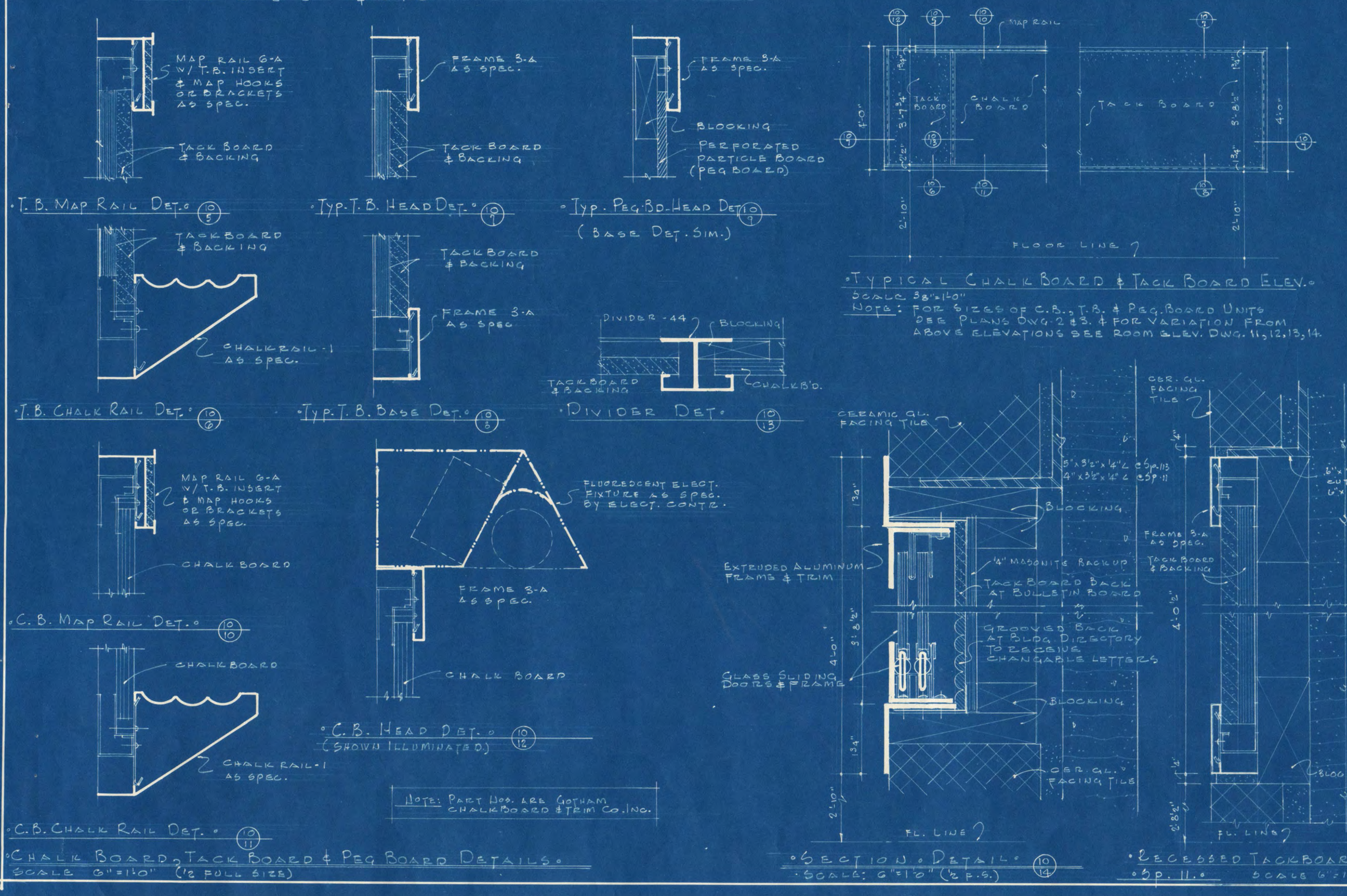
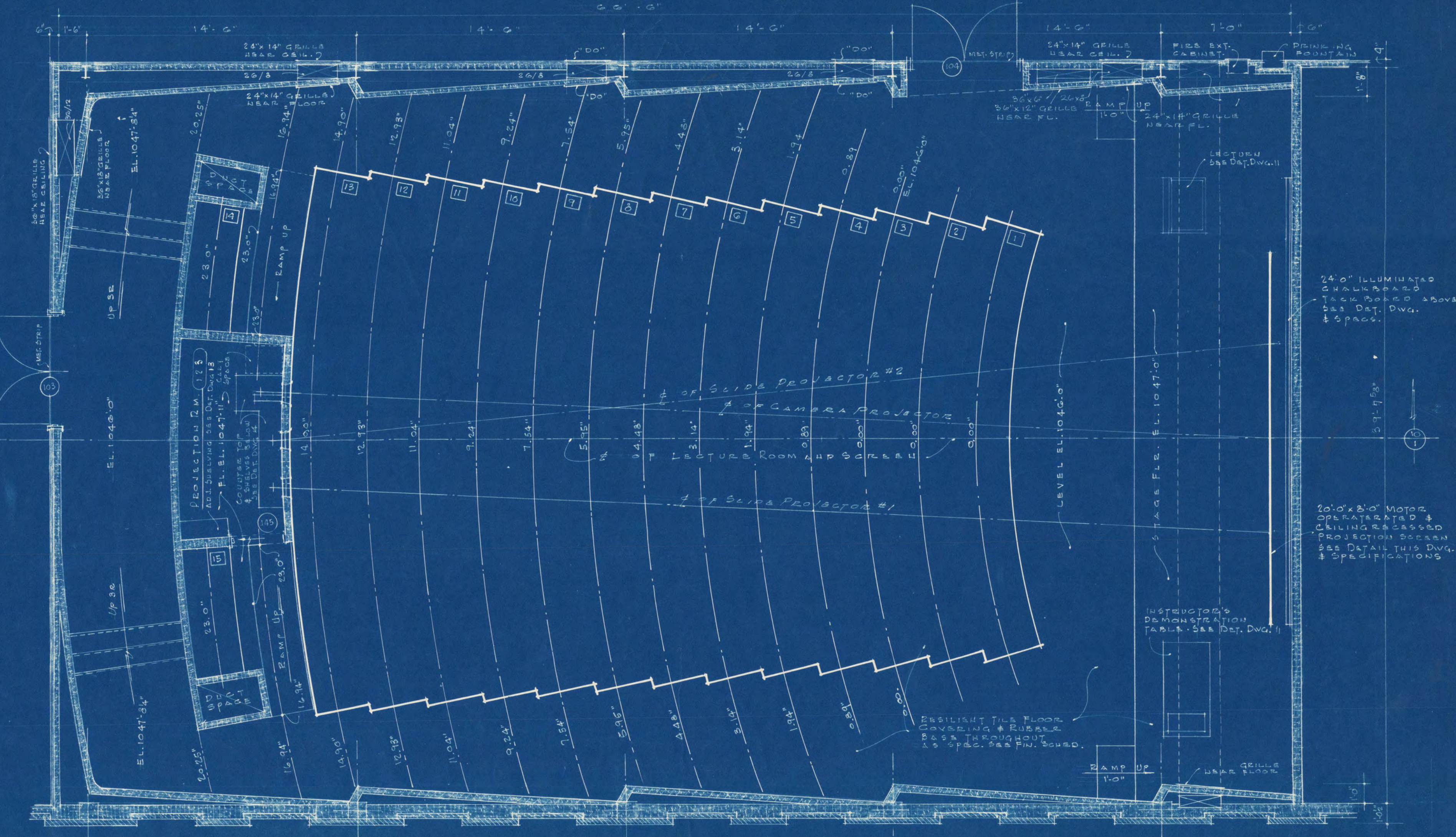
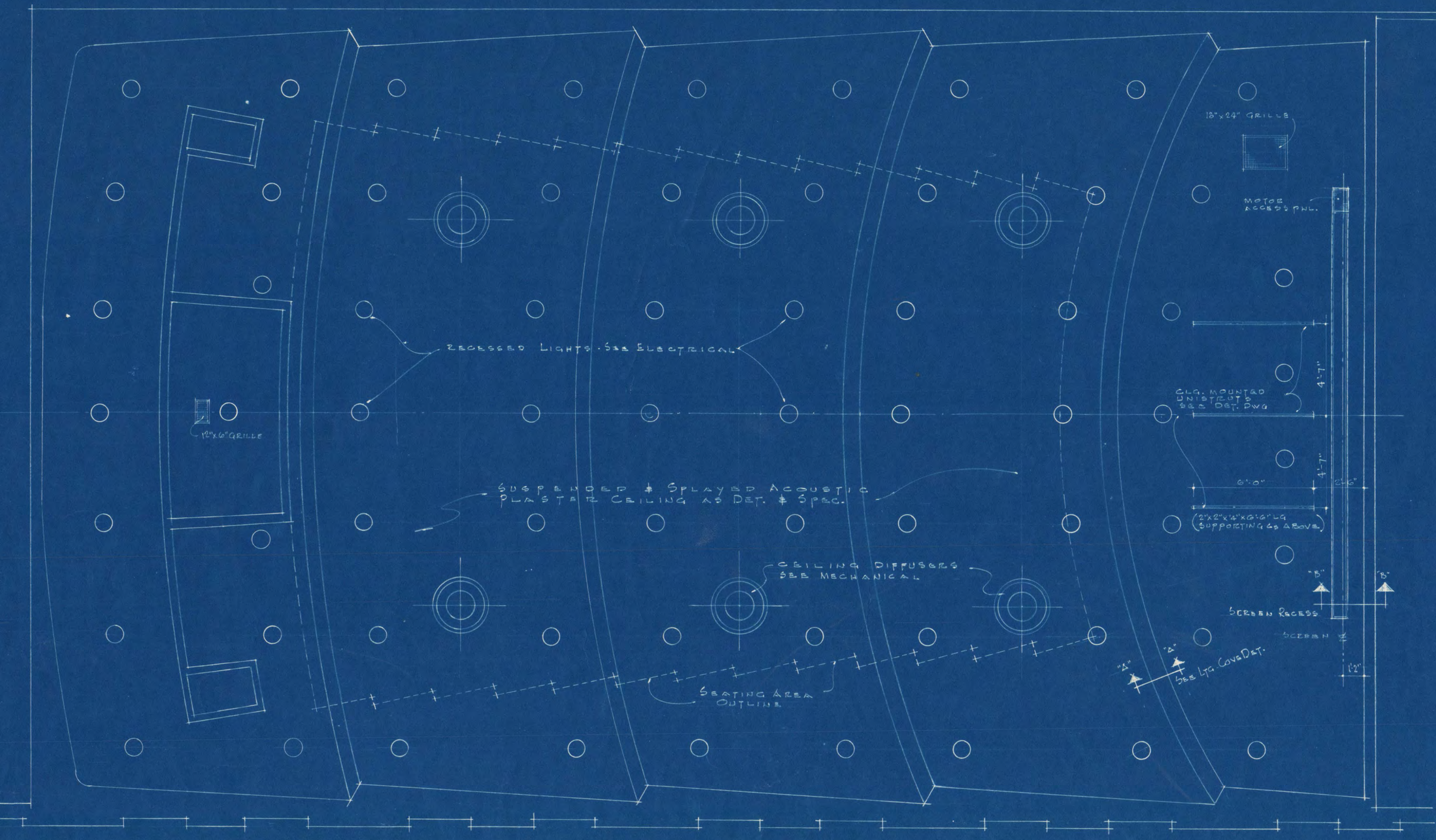
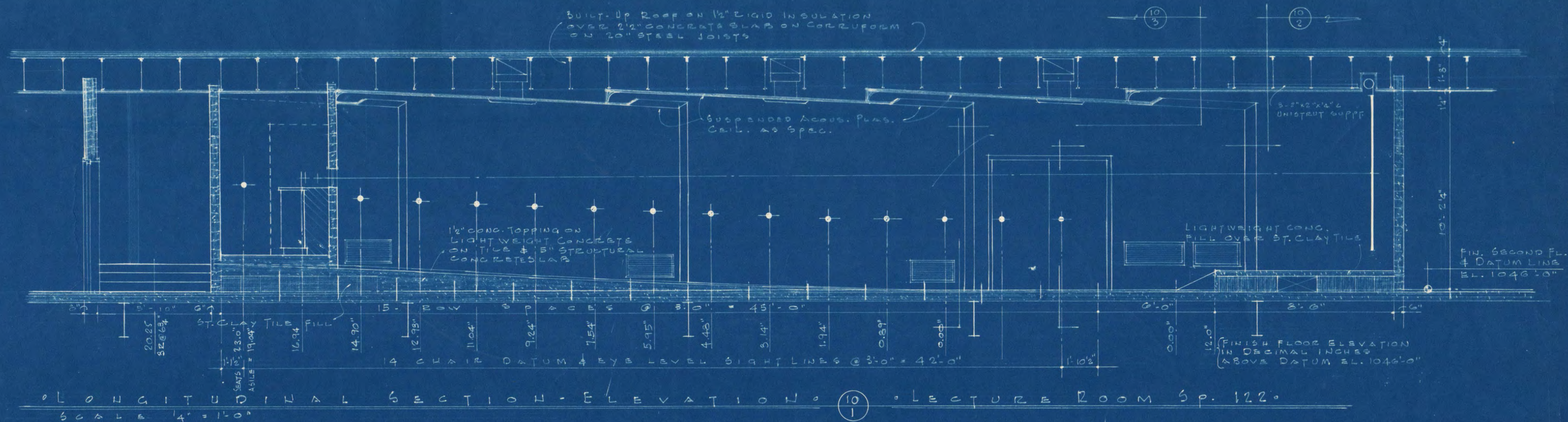
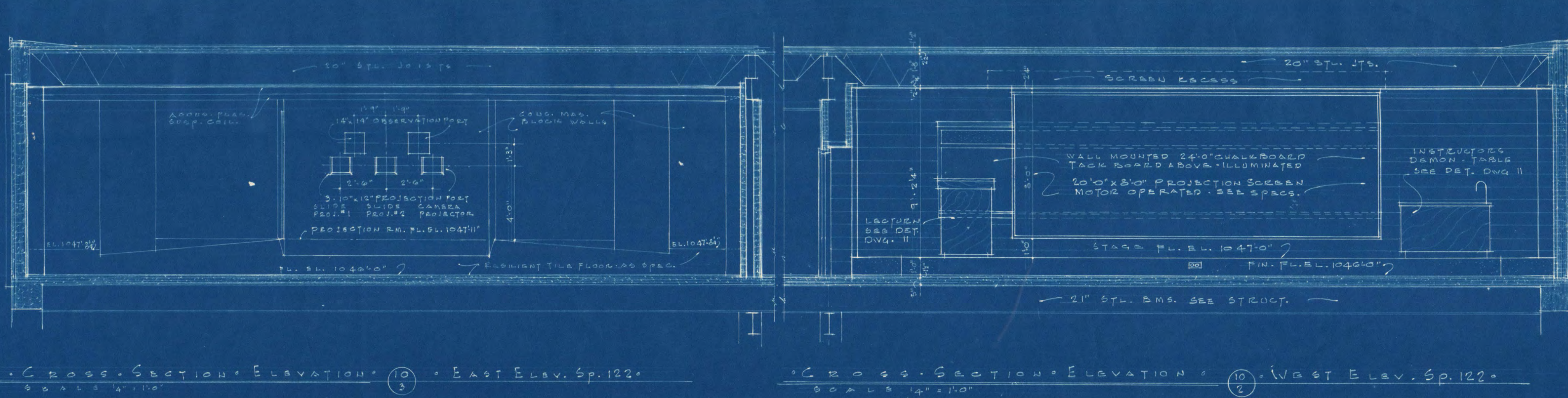


INDUSTRIAL ARTS AND CLASSROOM BUILDING		DEPT. OF ADMINISTRATION		STATE OF MINNESOTA	
ST. CLOUD STATE COLLEGE		ROOM 120 STATE CAPITOL BUILDING		ST. PAUL, MINN.	
ARCHITECTURAL AND ENGINEERING DIVISION		A. J. NELSON STATE ARCHITECT		SHEET NO. 7 OF 7	
DATE: 11/1/33	APPROVED BY: SUPT. OF INSTITUTION	DATE: 11/1/33	APPROVED BY: R.C. BOYER	STATE PROJECT NO. 100	DATE: 11/1/33
REVISED: 11/1/33	APPROVED BY: R.C. BOYER	REVISIONS:	APPROVED BY: COMMISSIONER OF ADMINISTRATION	AN AUTHORIZED SIGNATURE	DATE: 11/1/33
DRAWN BY: FRANK W. JACKSON		CHECKED BY: R.C. BOYER		FRANK W. JACKSON & ASSOCIATES INC. ARCHITECTS & ENGINEERS ST. CLOUD, MINNESOTA	



DEPT. OF ADMINISTRATION
 STATE OF MINNESOTA
 ST. PAUL, MINN.
 ARCHITECTURAL AND ENGINEERING DIVISION
 A. J. NELSON STATE ARCHITECT
 DATE: 10/10/1948
 REVISED: 10/10/1948
 DRAWN BY: FRANK W. JACKSON
 CHECKED BY: FRANK W. JACKSON
 APPROVED BY: [Signature]
 APPROVED BY: [Signature]
 SHEET NO. 0300
 STATE PROJECT NO. 0300



SCHEDULE OF SEATING

ROW NO.	NO. OF SEATS	TOTAL SEATS	SEAT SIZES
1	18	18	7' 6"
2	18	36	5' 10"
3	14	50	5' 10"
4	14	64	14'
5	14	78	5' 6"
6	14	92	5' 14"
7	15	107	2' 18"
8	10	117	16'
9	10	127	13' 8"
10	10	137	10' 6"
11	10	147	7' 9"
12	10	157	4' 12"
13	10	167	4' 12"
14	4	171	4'
15	4	175	4'

INDUSTRIAL ARTS AND CLASS ROOM BUILDING, ST. CLOUD STATE COLLEGE, ST. CLOUD, MINN. 50704

DEPT. OF ADMINISTRATION, ROOM 120 STATE CAPITOL BUILDING, ARCHITECTURAL AND ENGINEERING DIVISION, STATE OF MINNESOTA, ST. PAUL, MINN. 55155

A. J. NELSON STATE ARCHITECT

DATE AUG 10, 1941
REVISED
DRAWN BY FRANK W. JACKSON
CHECKED BY

APPROVED BY
APPROVED BY
APPROVED BY

SHEET NO. 10 OF 10
STATE PROJECT NO. 3036