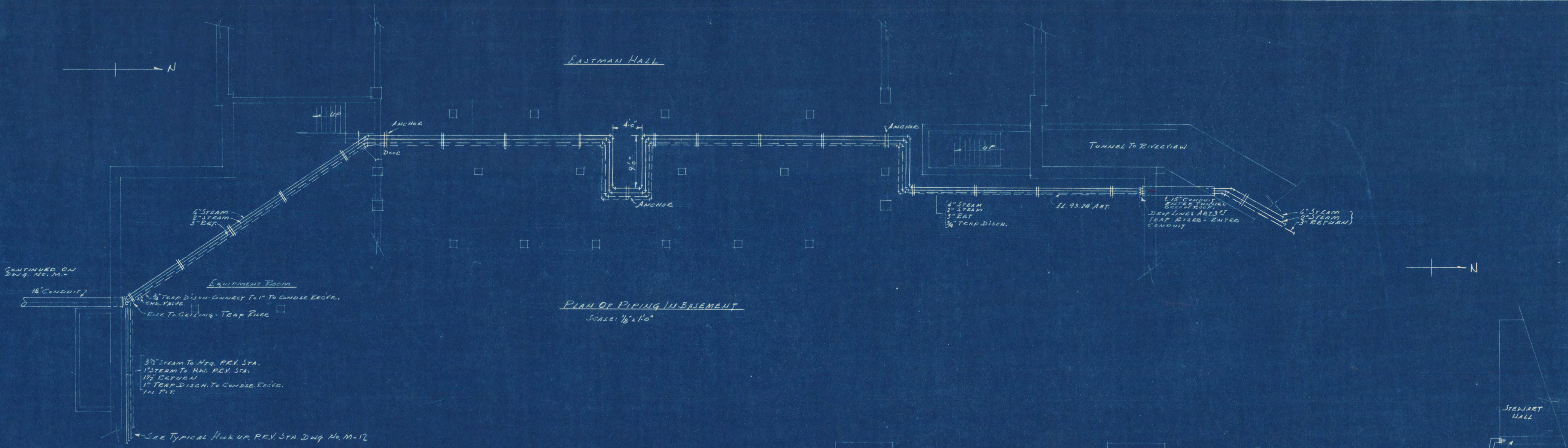


CENTRAL HEATING PLANT STATE TEACHERS COLLEGE ST. CLOUD, MINN. DEPT. OF ADMINISTRATION STATE OF MINNESOTA ST. PAUL, MINN.		
DATE	FRANK W. JACKSON ARCHITECT ST. CLOUD, MINN.	SHEET NO.
Dec. 10, 1948	FRED V. TRAYNOR, ASSOC. ARCHITECT ST. CLOUD, MINN.	M-3
APPROVED	G. M. ORR, ENGR. CO., CONSULTING ENGINEER	13
APPROVED BY	<i>Arthur M. Oliver</i> CHIEF STATE TEACHERS COLLEGE BOARD	PROJECT NO.
APPROVED BY	<i>R. J. Zepher</i> STATE DEPT. OF ADMINISTRATION ST. PAUL, MINN.	910

SCALE: 1" = 50'





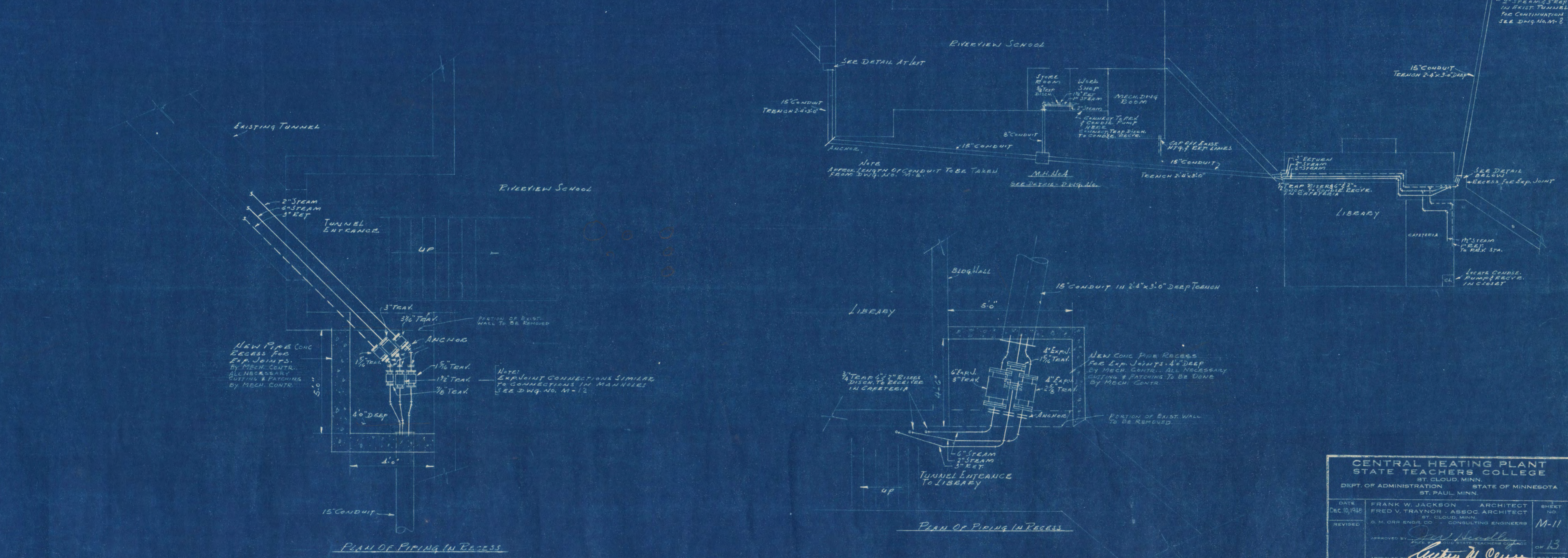


PLAN OF PIPING IN BASEMENT  
SCALE: 1/8" = 1'-0"

CONTINUED ON DWG. NO. M-11

3/4" STEAM TO Htg. REV. STA.  
1" STEAM TO Htg. REV. STA.  
1/2" RETURN  
1" TRAP DISCH. TO CONDSE. RECVR. IN PIT

SEE TYPICAL HOOK UP, REV. STA. DWG. NO. M-12



PLAN OF PIPING IN RECESS

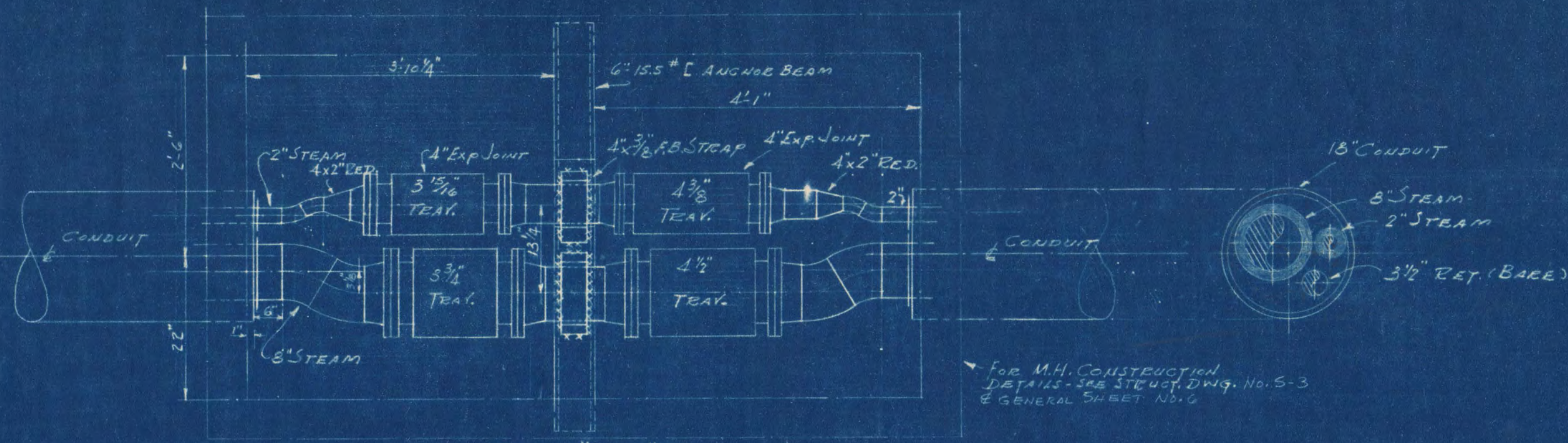
NEW PIPE CONC RECESS FOR EXP. JOINTS. BY MECH. CONTR. ALL NECESSARY CUTTING & PATCHING BY MECH. CONTR.

NOTE: EXP. JOINT CONNECTIONS SIMILAR TO CONNECTIONS IN MANHOLES SEE DWG. NO. M-12

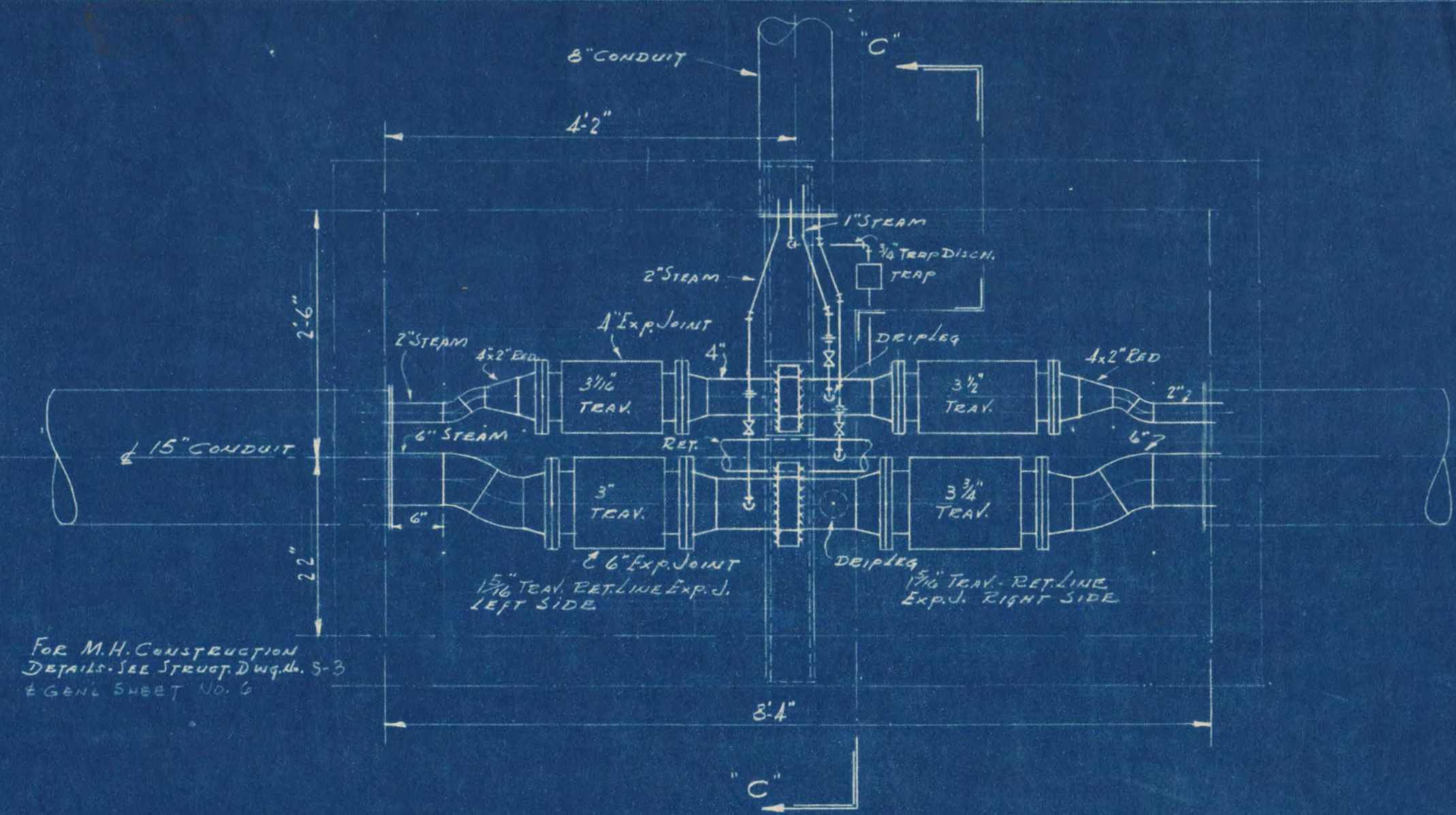
NEW CONC PIPE RECESS FOR EXP. JOINTS. 4\"/>

PORTION OF EXIST. WALL TO BE REMOVED.

CENTRAL HEATING PLANT STATE TEACHERS COLLEGE ST. CLOUD, MINN. DEPT. OF ADMINISTRATION STATE OF MINNESOTA ST. PAUL, MINN.		
DATE DEC. 10, 1942	FRANK W. JACKSON - ARCHITECT FRED V. TRAYNOR - ASSOC. ARCHITECT	SHEET NO. M-11
REVISED	G. M. ORR ENGR. CO. CONSULTING ENGINEERS	OF 13
APPROVED BY	<i>Arthur M. Owen</i> PRES. STATE TEACHERS COLLEGE BOARD	PROJECT NO. 919
DRAWN BY R.I.M.	APPROVED BY <i>R. G. Zehner</i> CONSULTING ENGINEER	

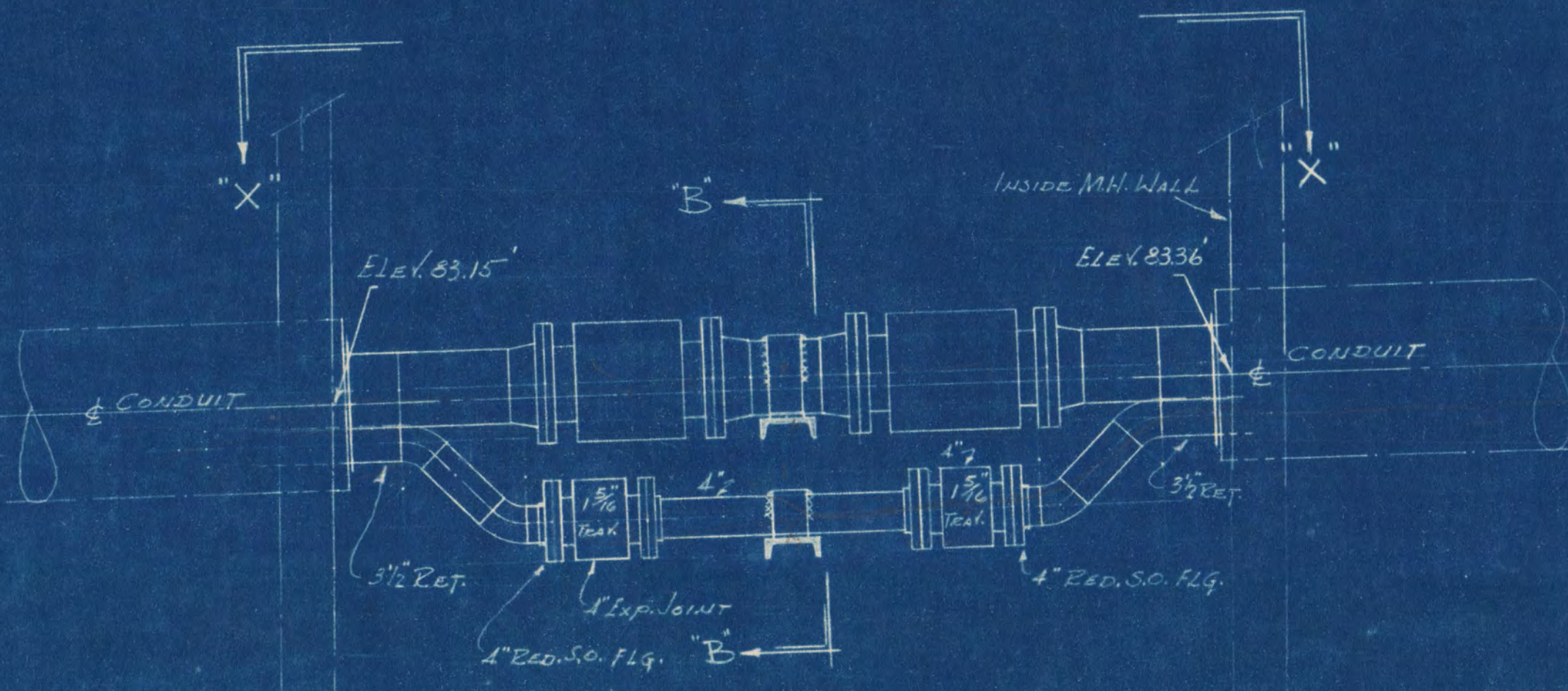


PLAN "X-X"  
SCALE 3/4" = 1'-0"  
DETAIL OF MANHOLE No. 1

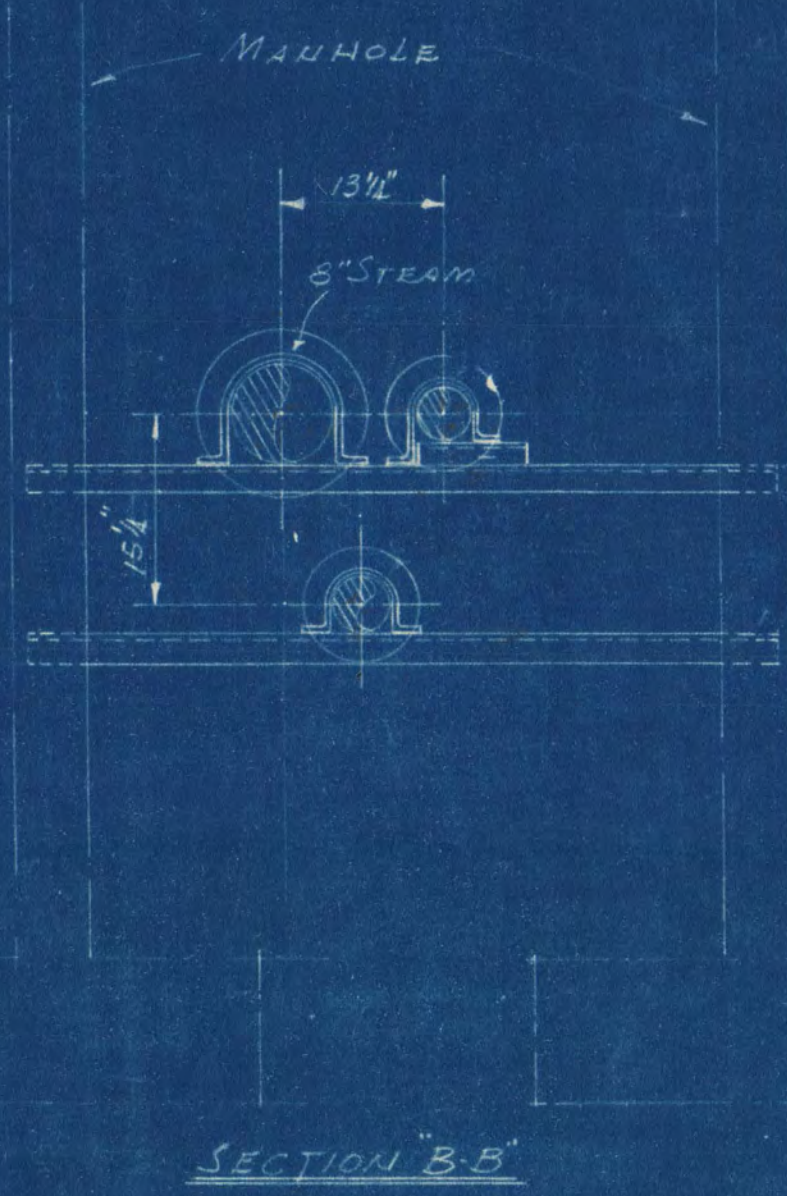


FOR M.H. CONSTRUCTION  
DETAILS - SEE STRUCT. DWG. No. S-3  
& GENERAL SHEET No. 6

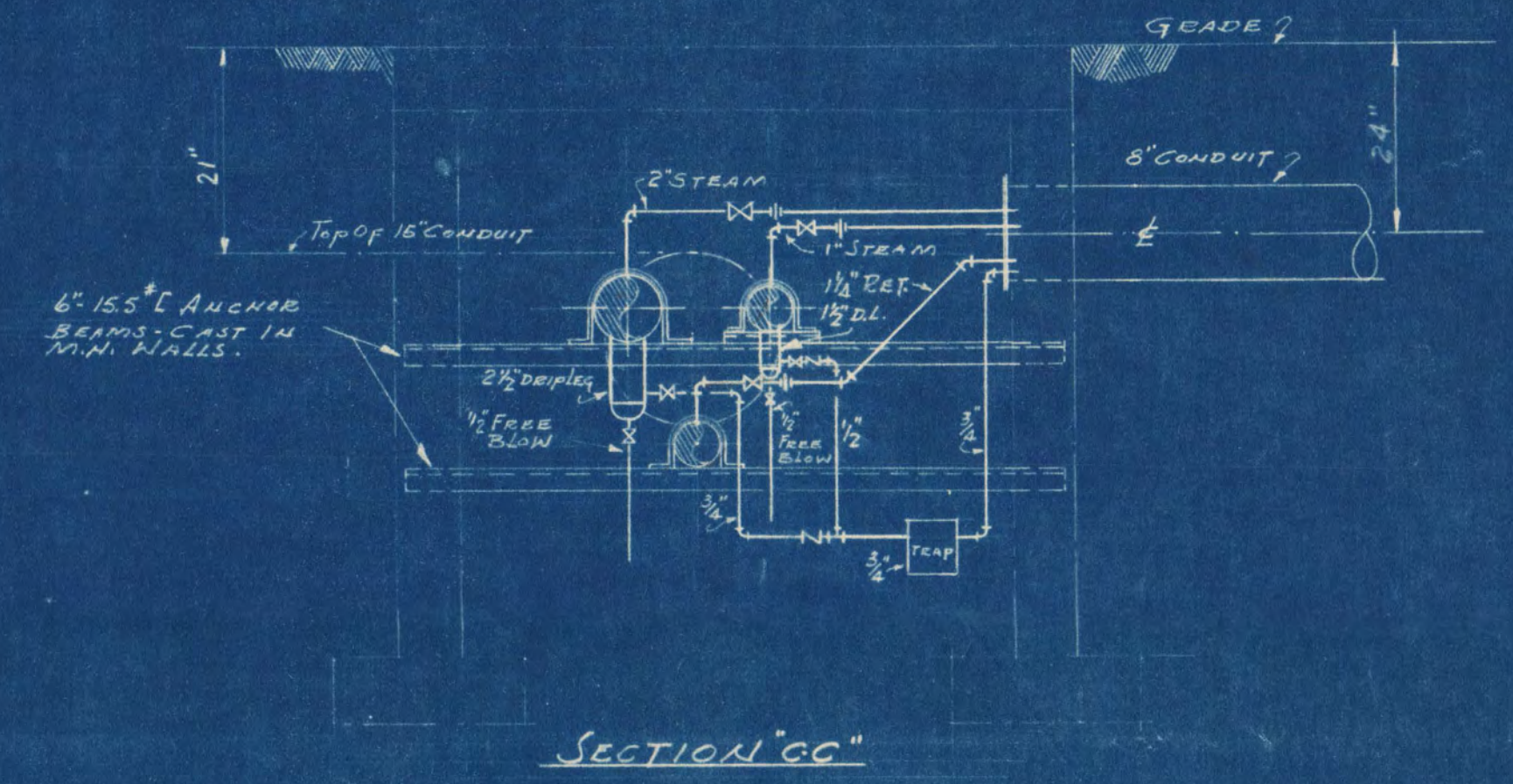
PLAN VIEW  
MANHOLE No. 4  
ELEVATION SIMILAR TO M.H. No. 1



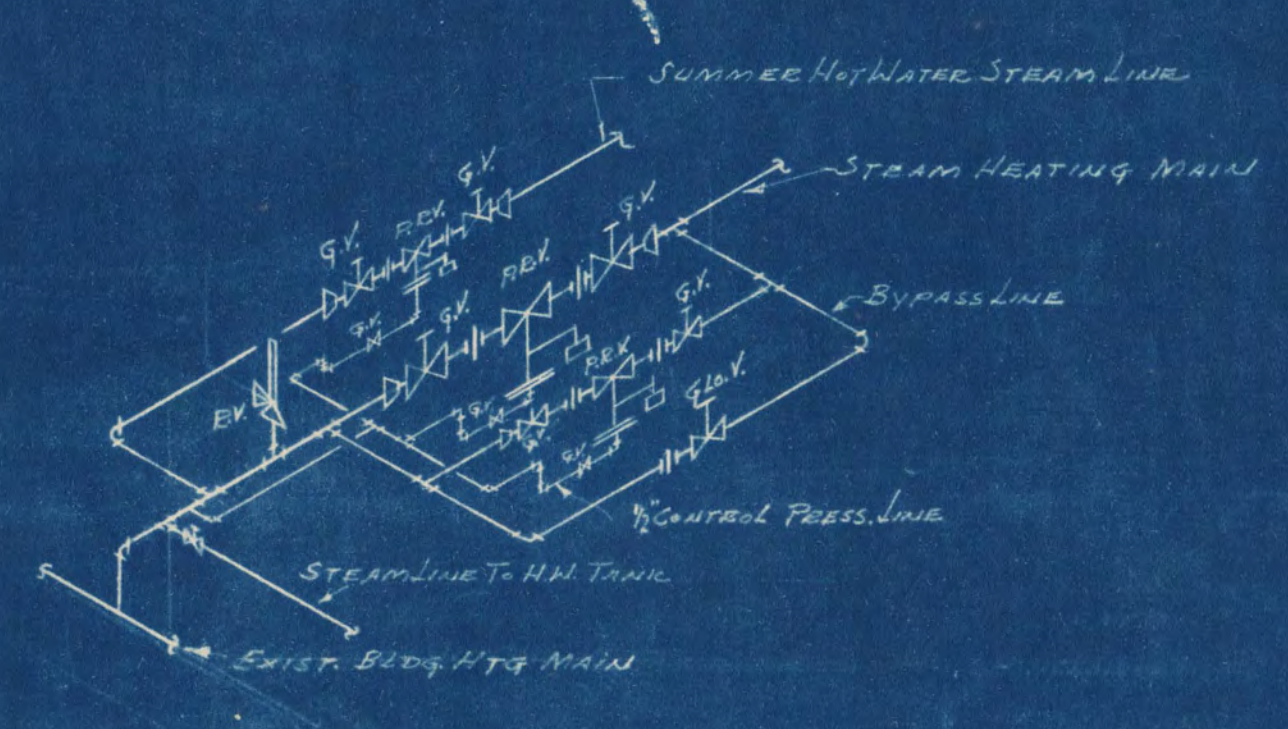
ELEVATION  
M.H. No. 4. M.H. No. 1 SIMILAR  
FOR DETAILS OF PIPING



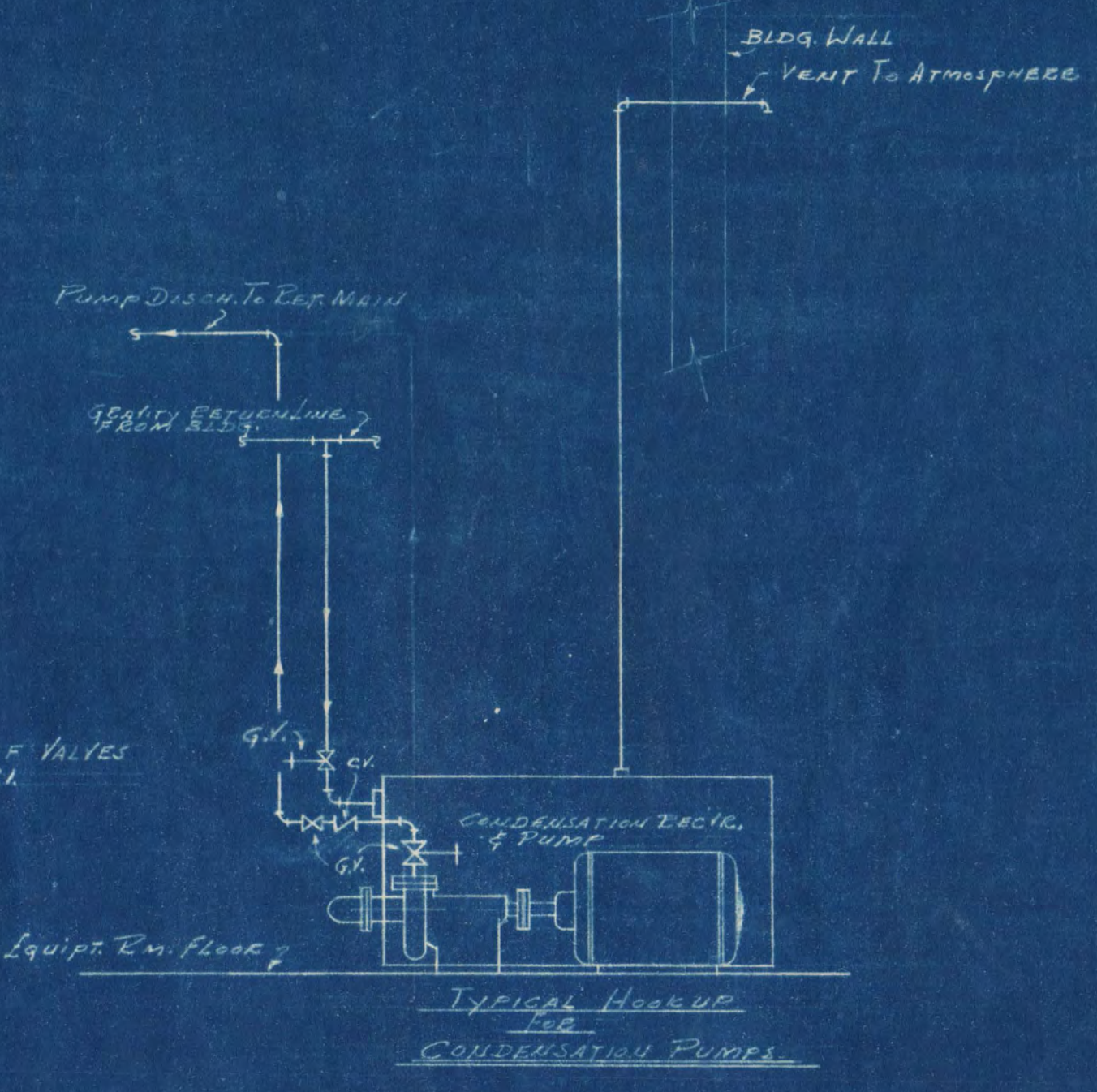
SECTION "B-B"



SECTION "C-C"



TYPICAL HOOK UP  
FOR  
PRESS. RED. STATIONS



TYPICAL HOOK UP  
FOR  
CONDENSATION PUMPS

PRESS. RED. VALVE LIST						RELIEF VALVE LIST			
DESCRIPTION	S.D.R.	QUANT.	SIZE	RANGE	TYPE MAKE & NO.	QUANT.	SIZE	MAKE	No.
SNOWMAKER H. HEATING HOT WATER	5035	1	1 1/2"	100#-2#	RCV. DAVIS No. 16	1	1 1/2"	CONSOLIDATED	1464
MUSIC STUDIO HEATING HOT WATER	780	1	1 1/2"	100#-2#	RCV. DAVIS No. 16				
EASTMAN H. HEATING HOT WATER	1600	1	1 3/4"	100#-2#	F.C.V. DAVIS No. 16	1	3/4"	CONSOLIDATED	1464
HEATING HOT WATER	15919	1	1 1/2"	100#-2#	F.C.V. DAVIS No. 16	1	2 1/2"	CONSOLIDATED	1464
REVERSON SCH. HEATING HOT WATER	1740	1	1 3/4"	100#-2#	F.C.V. DAVIS No. 16				
HEATING HOT WATER	5080	1	1 1/2"	100#-2#	RCV. DAVIS No. 16	1	1 1/2"	CONSOLIDATED	1464
LIBRARY HEATING HOT WATER	2108	1	1"	100#-2#	F.C.V. DAVIS No. 16	1	1"	CONSOLIDATED	1464
HEATING HOT WATER	2905	1	1 1/4"	100#-2#	REL. DAVIS No. 16				
LANE H. HEATING HOT WATER	5217	1	1 1/2"	100#-2#	REL. DAVIS No. 16	1	1 1/2"	CONSOLIDATED	1464
HEATING HOT WATER	750	1	1 1/2"	100#-2#	REL. DAVIS No. 16				

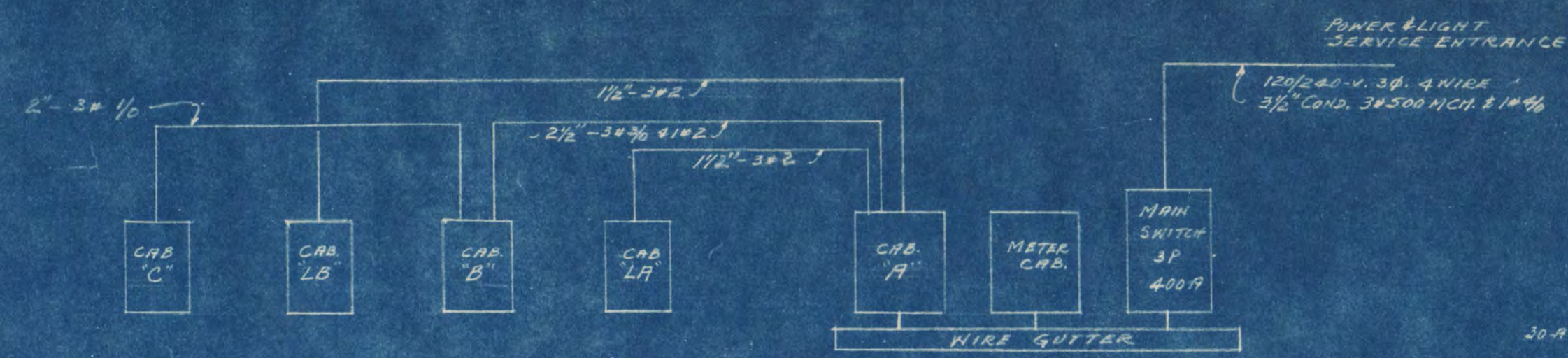
CONDENSATION PUMP LIST				
LOCATION	QUANT.	S.D.R.	MAKE & TYPE	
SNOWMAKER H.	1	5000	DUNHAM CH 2800	3 1/2 220V
EASTMAN H.	1	2000	DUNHAM CH 2800	3 1/2 220V
MUSIC STUDIO	1	2000	DUNHAM CH 2800	1 1/2 220V
REVERSON SCH.	1	6000	DUNHAM CH 2800	1 1/2 220V
LIBRARY	1	2000	DUNHAM CH 2800	1 1/2 220V

**CENTRAL HEATING PLANT  
STATE TEACHERS COLLEGE**

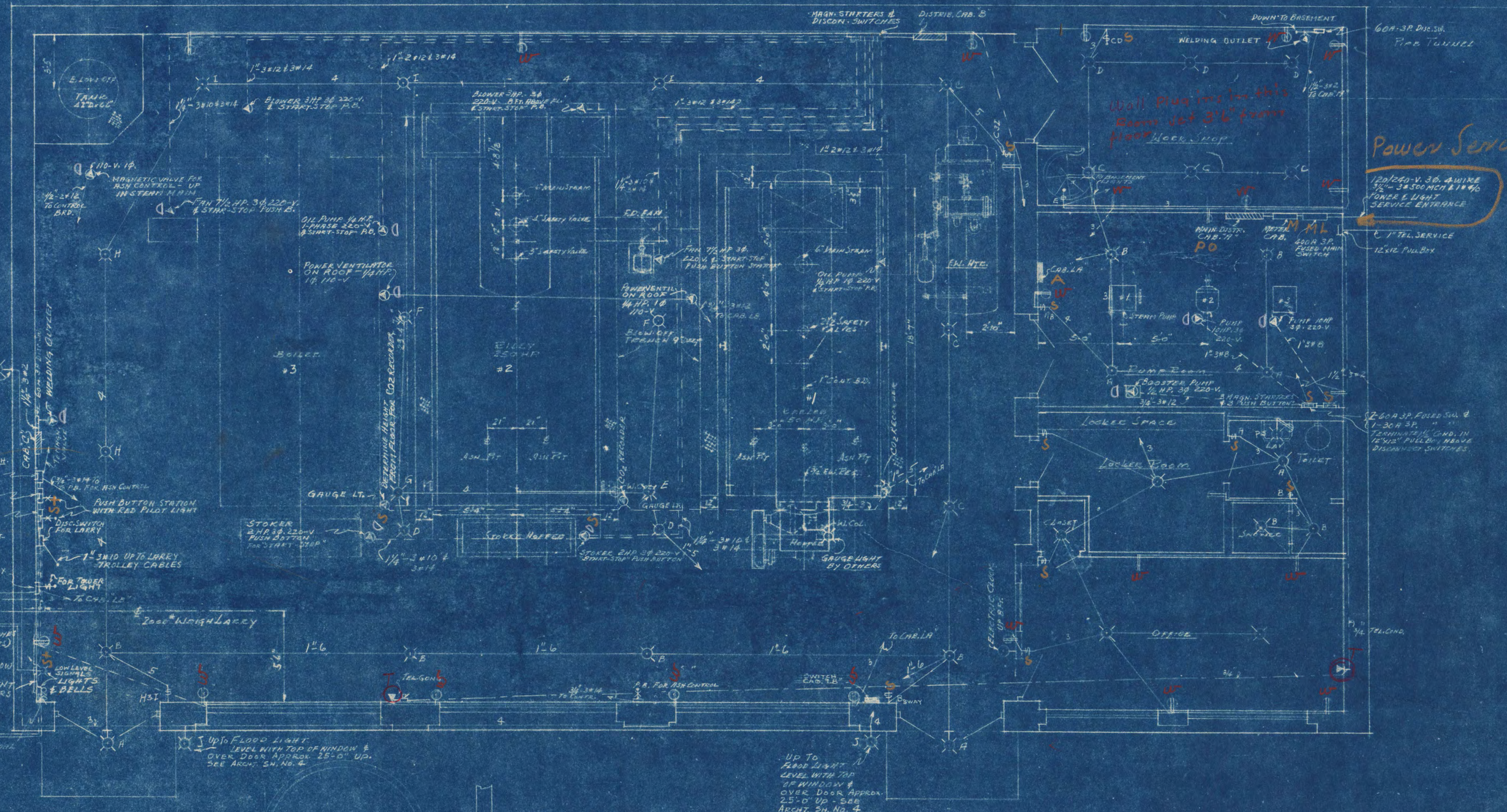
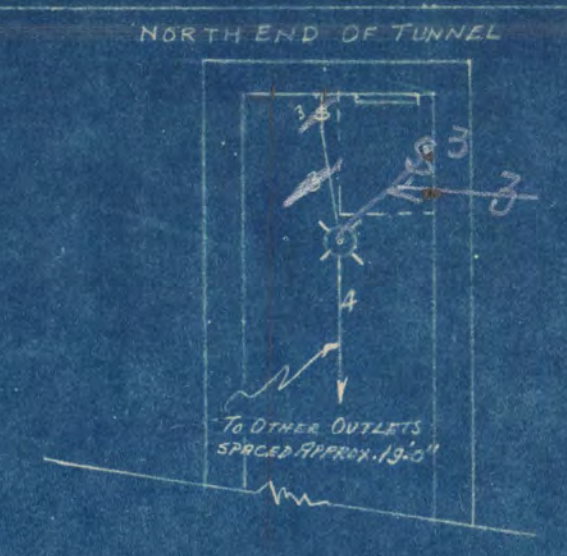
ST. CLOUD, MINN.  
DEPT. OF ADMINISTRATION STATE OF MINNESOTA  
ST. PAUL, MINN.

DATE Dec. 10, 1948	FRANK W. JACKSON ARCHITECT FRED V. TRAYNOR - ASSOC. ARCHITECT ST. CLOUD, MINN. G. M. ORR ENGR. CO. - CONSULTING ENGINEER	SHEET NO. <b>M-12</b>
REVISED	APPROVED BY <i>John Headley</i> ST. CLOUD STATE TEACHERS COLLEGE	OF 13
	APPROVED BY <i>Arthur M. Coeur</i> FIELD TRAIL PLANNING & CONSTRUCTION CO.	PROJECT NO.
DRAWN BY <i>R.T.M.</i>	APPROVED BY <i>R. G. Zepf</i> DEPT. OF ADMINISTRATION ST. CLOUD, MINN.	<b>919</b>





RISE DIAGRAM - POWER AND LIGHT



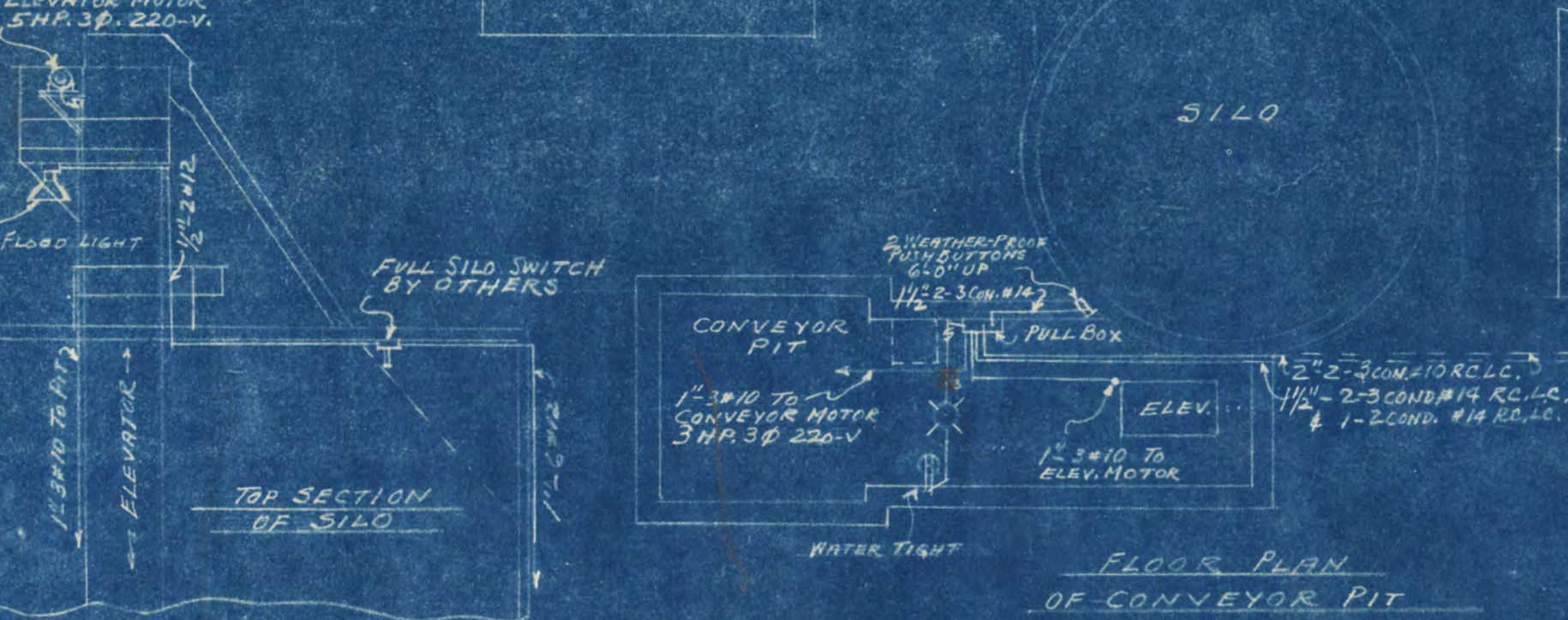
- ELECTRICAL SYMBOLS**
- CEILING LIGHT OUTLET
  - OUTSIDE LIGHT - FLOOD OR BRACKET
  - WALL OUTLET - DUPLEX CONVENIENCE
  - SPECIAL PURPOSE OUTLET - AS INDICATED
  - TELEPHONE OUTLET
  - WALL SWITCH - NUMERAL INDICATES NUMBER OF POLES
  - WALL SWITCH WITH PILOT LIGHT
  - PUSH BUTTON STATION WITH PILOT LIGHT
  - LIGHTING PANEL
  - POWER & LIGHT DISTR. PANEL
  - CONDUIT CONCEALED IN WALLS & CEILING
  - CONDUIT CONCEALED IN FLOOR
  - TELEPHONE CONDUIT

ELECTRICAL PLAN  
Boiler House

CENTRAL HEATING PLANT STATE TEACHERS COLLEGE ST. CLOUD, MINN. DEPT. OF ADMINISTRATION - STATE OF MINNESOTA ST. PAUL, MINN.		
DATE Dec. 10, 1948	FRANK W. JACKSON - ARCHITECT FRED V. TRAYNOR - ASSOC. ARCHITECT G. M. ORR, ENGR. CO. - CONSULTING ENGINEERS	SHEET NO. E-1
REVISIONS	APPROVED BY <i>John Headley</i> PRES. STATE TEACHERS COLLEGE BOARD	OP. 1
	APPROVED BY <i>Walter M. Bauer</i> PRES. STATE TEACHERS COLLEGE BOARD	PROJECT NO.
DRAWN BY C.E.E.	APPROVED BY <i>R. G. Zepf</i> STATE OF MINNESOTA ADMINISTRATIVE	919

I hereby certify that this plan, specification, or report was prepared by me or under my direct supervision and that I am a duly Registered Professional Engineer under the laws of the State of Minnesota.

Date Dec. 10, 1948 Reg. No. 752



FLOOR PLAN  
OF CONVEYOR PIT







