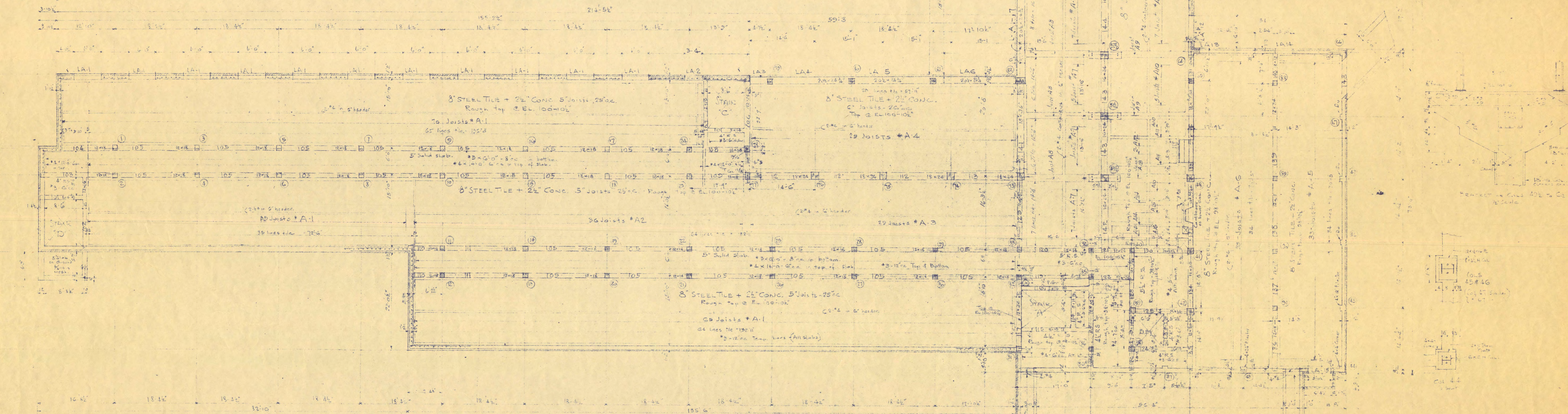
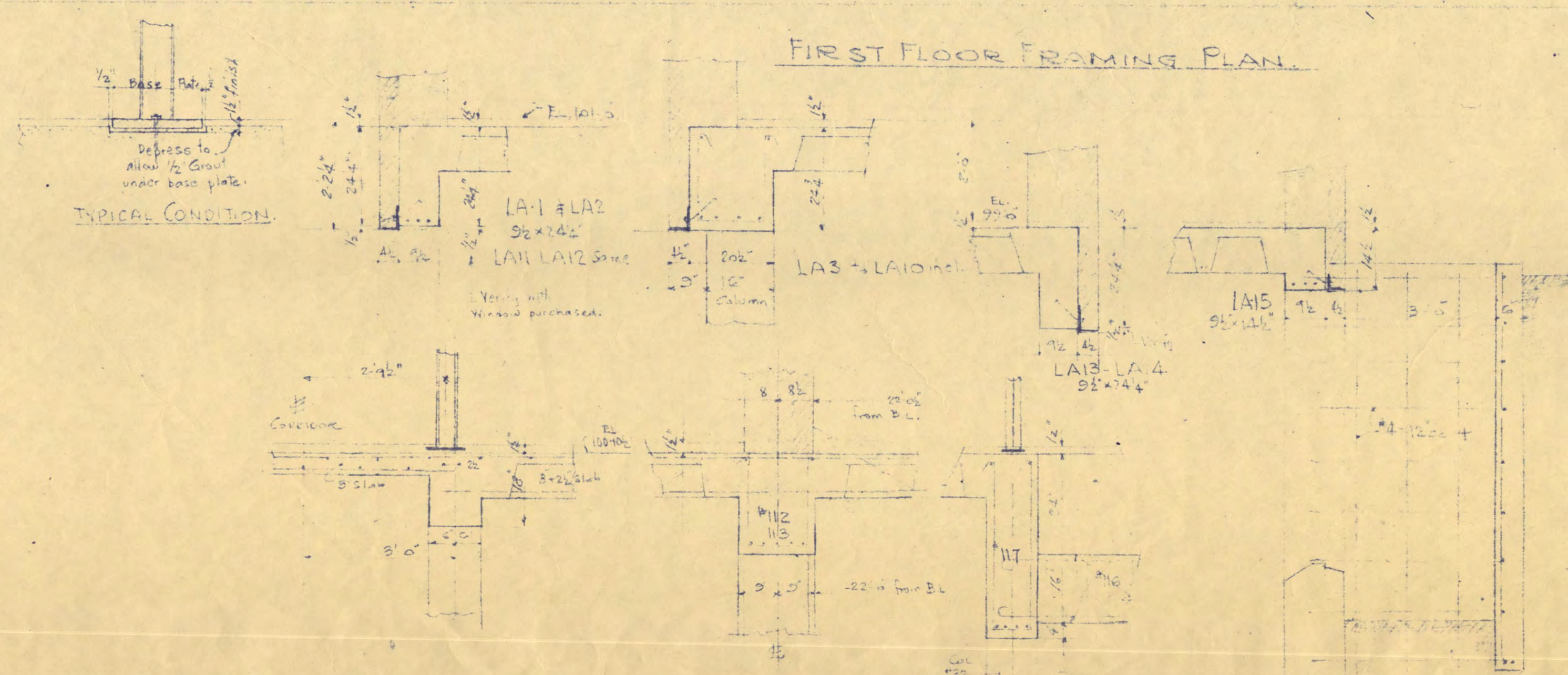


BEAM	SIZE	No	Shoat	Bent	Stump	Remarks
101	8x18	2	2.7x	1.7	16	2.7x ties
102	12x18	1	2.7x	1.7	16	2.7x ties
103	12x18	1	2.7x	1.7	16	2.7x ties
104	12x18	1	2.7x	1.7	16	2.7x ties
105	12x18	1	2.7x	1.7	16	2.7x ties
106	12x18	1	2.7x	1.7	16	2.7x ties
107	12x18	1	2.7x	1.7	16	2.7x ties
108	12x18	1	2.7x	1.7	16	2.7x ties
109	12x18	1	2.7x	1.7	16	2.7x ties
110	12x18	1	2.7x	1.7	16	2.7x ties
111	12x18	1	2.7x	1.7	16	2.7x ties
112	12x18	1	2.7x	1.7	16	2.7x ties
113	12x18	1	2.7x	1.7	16	2.7x ties
114	12x18	1	2.7x	1.7	16	2.7x ties
115	12x18	1	2.7x	1.7	16	2.7x ties
116	12x18	1	2.7x	1.7	16	2.7x ties
117	12x18	1	2.7x	1.7	16	2.7x ties
118	12x18	1	2.7x	1.7	16	2.7x ties
119	12x18	1	2.7x	1.7	16	2.7x ties
120	12x18	1	2.7x	1.7	16	2.7x ties
121	12x18	1	2.7x	1.7	16	2.7x ties
122	12x18	1	2.7x	1.7	16	2.7x ties
123	12x18	1	2.7x	1.7	16	2.7x ties
124	12x18	1	2.7x	1.7	16	2.7x ties
125	12x18	1	2.7x	1.7	16	2.7x ties
126	12x18	1	2.7x	1.7	16	2.7x ties
127	12x18	1	2.7x	1.7	16	2.7x ties
128	12x18	1	2.7x	1.7	16	2.7x ties
129	12x18	1	2.7x	1.7	16	2.7x ties
130	12x18	1	2.7x	1.7	16	2.7x ties
131	12x18	1	2.7x	1.7	16	2.7x ties
132	12x18	1	2.7x	1.7	16	2.7x ties
133	12x18	1	2.7x	1.7	16	2.7x ties
134	12x18	1	2.7x	1.7	16	2.7x ties
135	12x18	1	2.7x	1.7	16	2.7x ties
136	12x18	1	2.7x	1.7	16	2.7x ties
137	12x18	1	2.7x	1.7	16	2.7x ties
138	12x18	1	2.7x	1.7	16	2.7x ties
139	12x18	1	2.7x	1.7	16	2.7x ties

BEAM	SIZE	No	Shoat	Bent	Stump	Remarks
140	12x18	1	2.7x	1.7	16	2.7x ties
141	12x18	1	2.7x	1.7	16	2.7x ties
142	12x18	1	2.7x	1.7	16	2.7x ties
143	12x18	1	2.7x	1.7	16	2.7x ties
144	12x18	1	2.7x	1.7	16	2.7x ties
145	12x18	1	2.7x	1.7	16	2.7x ties
146	12x18	1	2.7x	1.7	16	2.7x ties
147	12x18	1	2.7x	1.7	16	2.7x ties
148	12x18	1	2.7x	1.7	16	2.7x ties
LA1	2x14	5	3	4		
LA2	Do	3	4	5		
LA3	2x14	5	3	4		2.7x ties
LA4	2x14	5	3	4		2.7x ties
LA5	Do	3	4	5		2.7x ties
LA6	Do	3	4	5		2.7x ties
LA7	Do	3	4	5		2.7x ties
LA8	Do	3	4	5		2.7x ties
LA9	Do	3	4	5		2.7x ties
LA10	Do	3	4	5		2.7x ties
LA11	Do	3	4	5		2.7x ties
LA12	Do	3	4	5		2.7x ties
LA13	Do	3	4	5		2.7x ties
LA14	Do	3	4	5		2.7x ties
LA15	Do	3	4	5		2.7x ties



JOIST	SIZE	No	Shoat	Bent	Stump	Remarks
A1	8x18	2	2.7x	1.7	16	2.7x ties
A2	Do	2	2.7x	1.7	16	2.7x ties
A3	Do	2	2.7x	1.7	16	2.7x ties
A4	Do	2	2.7x	1.7	16	2.7x ties
A5	Do	2	2.7x	1.7	16	2.7x ties
A6	Do	2	2.7x	1.7	16	2.7x ties
A7	Do	2	2.7x	1.7	16	2.7x ties
A8	Do	2	2.7x	1.7	16	2.7x ties
A9	Do	2	2.7x	1.7	16	2.7x ties
A10	Do	2	2.7x	1.7	16	2.7x ties
A11	Do	2	2.7x	1.7	16	2.7x ties
A12	Do	2	2.7x	1.7	16	2.7x ties
A13	Do	2	2.7x	1.7	16	2.7x ties
A14	Do	2	2.7x	1.7	16	2.7x ties
A15	Do	2	2.7x	1.7	16	2.7x ties



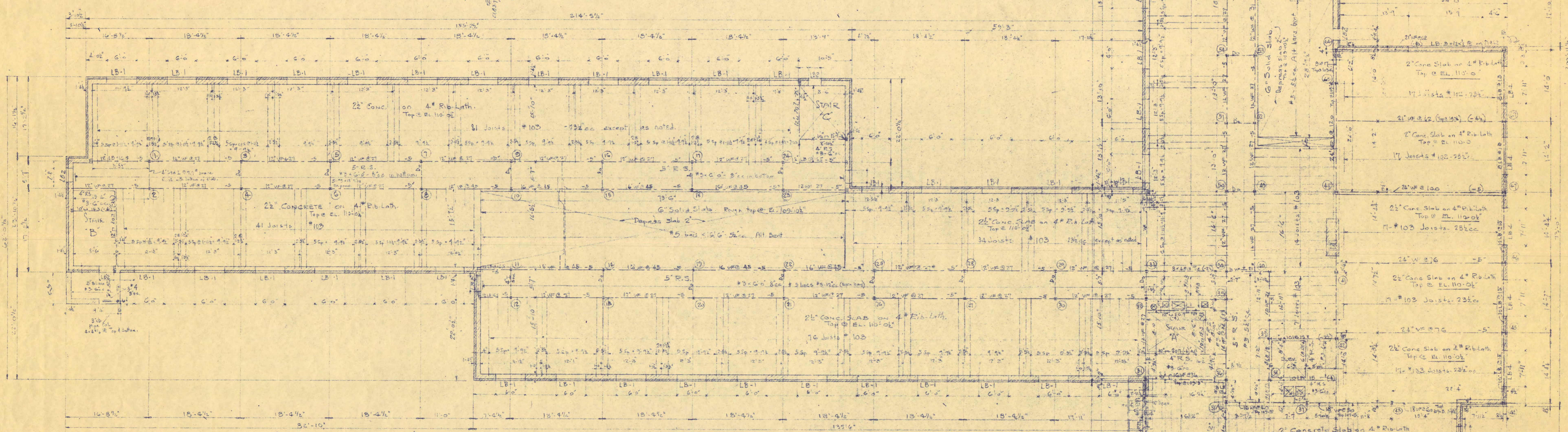
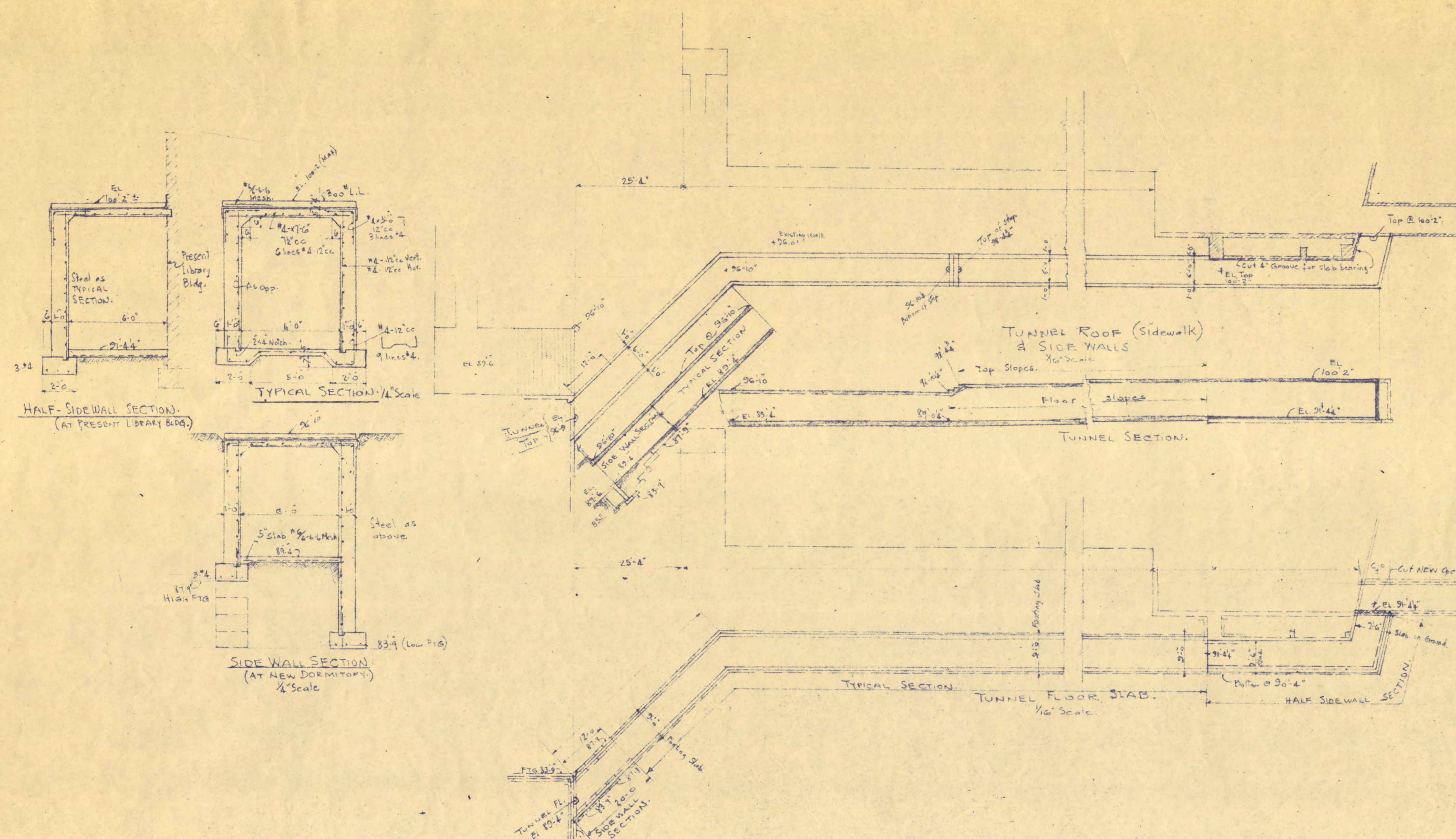
GIRLS DORMITORY,  
ST. CLOUD STATE TEACHER'S COLLEGE,  
ST. CLOUD, MINNESOTA

DESIGNED BY  
FRANK W. LARSON & ASSOCIATES  
ARCHITECTS & ENGINEERS  
ST. CLOUD, MINNESOTA

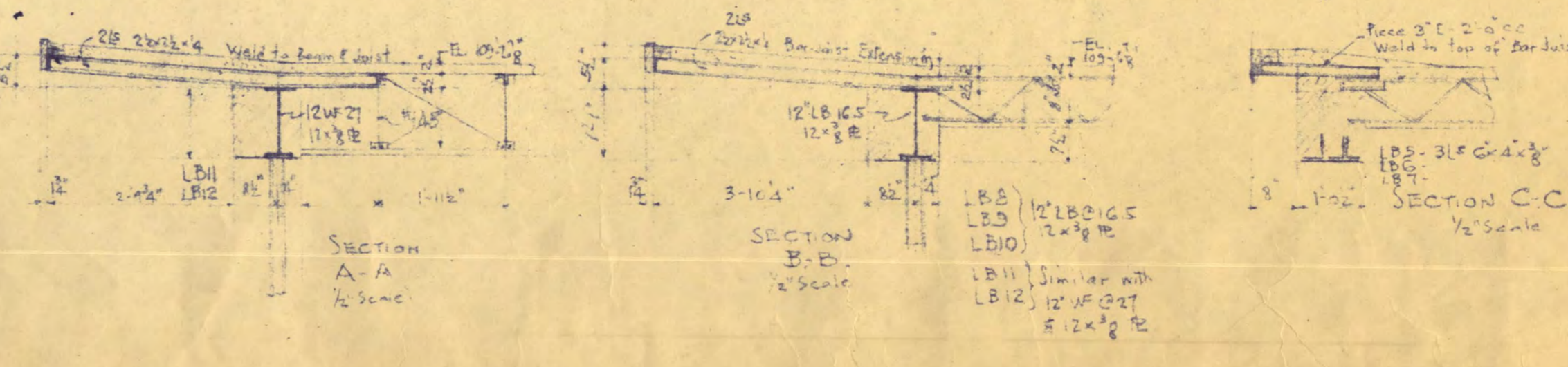
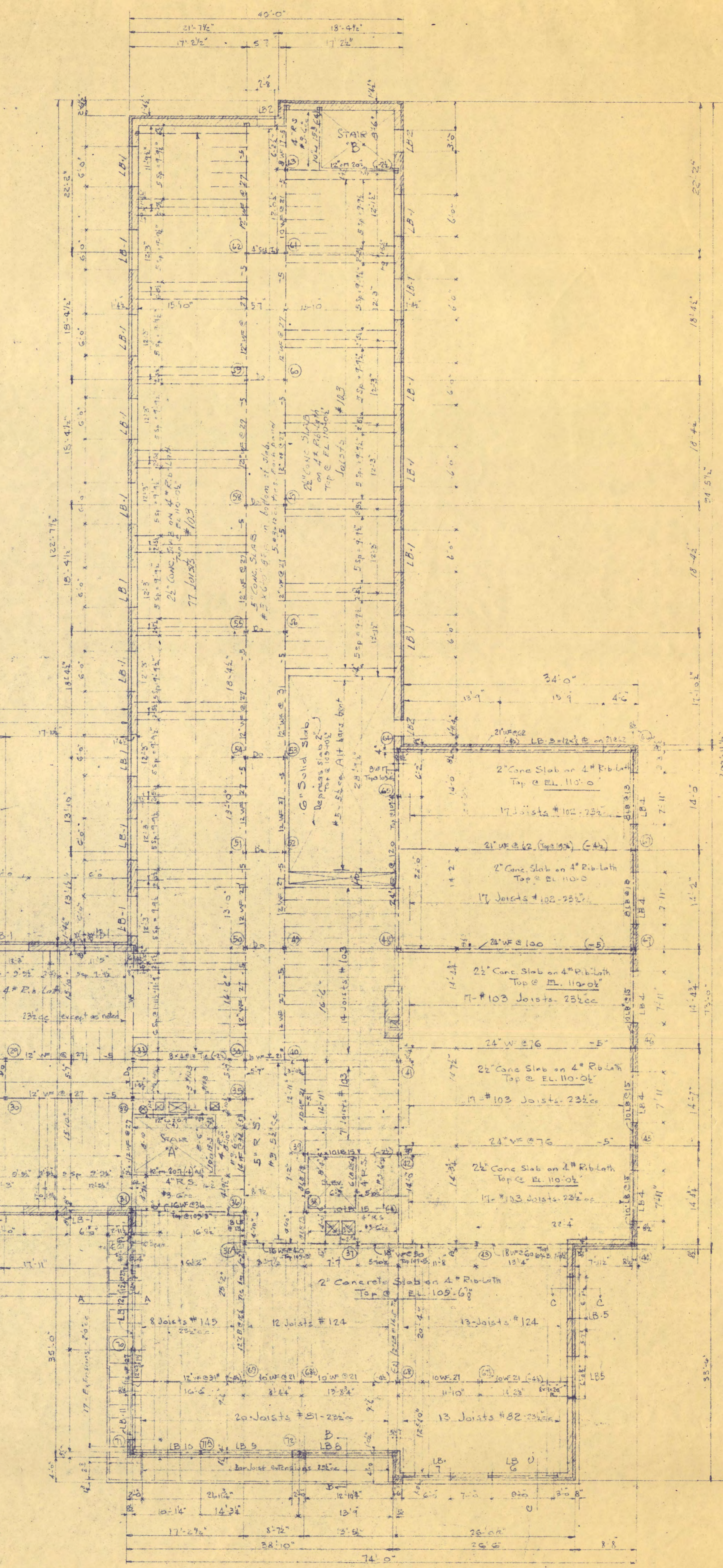
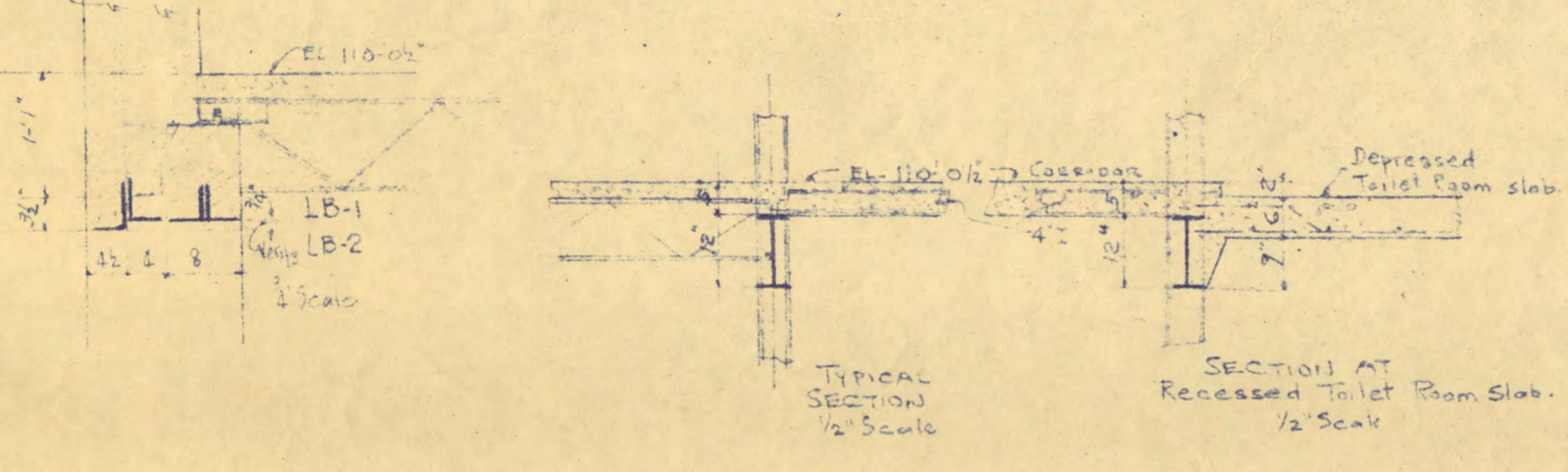
STRUCTURAL ENGINEERS  
SCHUETT-MEIER & CO.  
ST. CLOUD, MINNESOTA

APPROVED BY  
[Signature]  
[Signature]

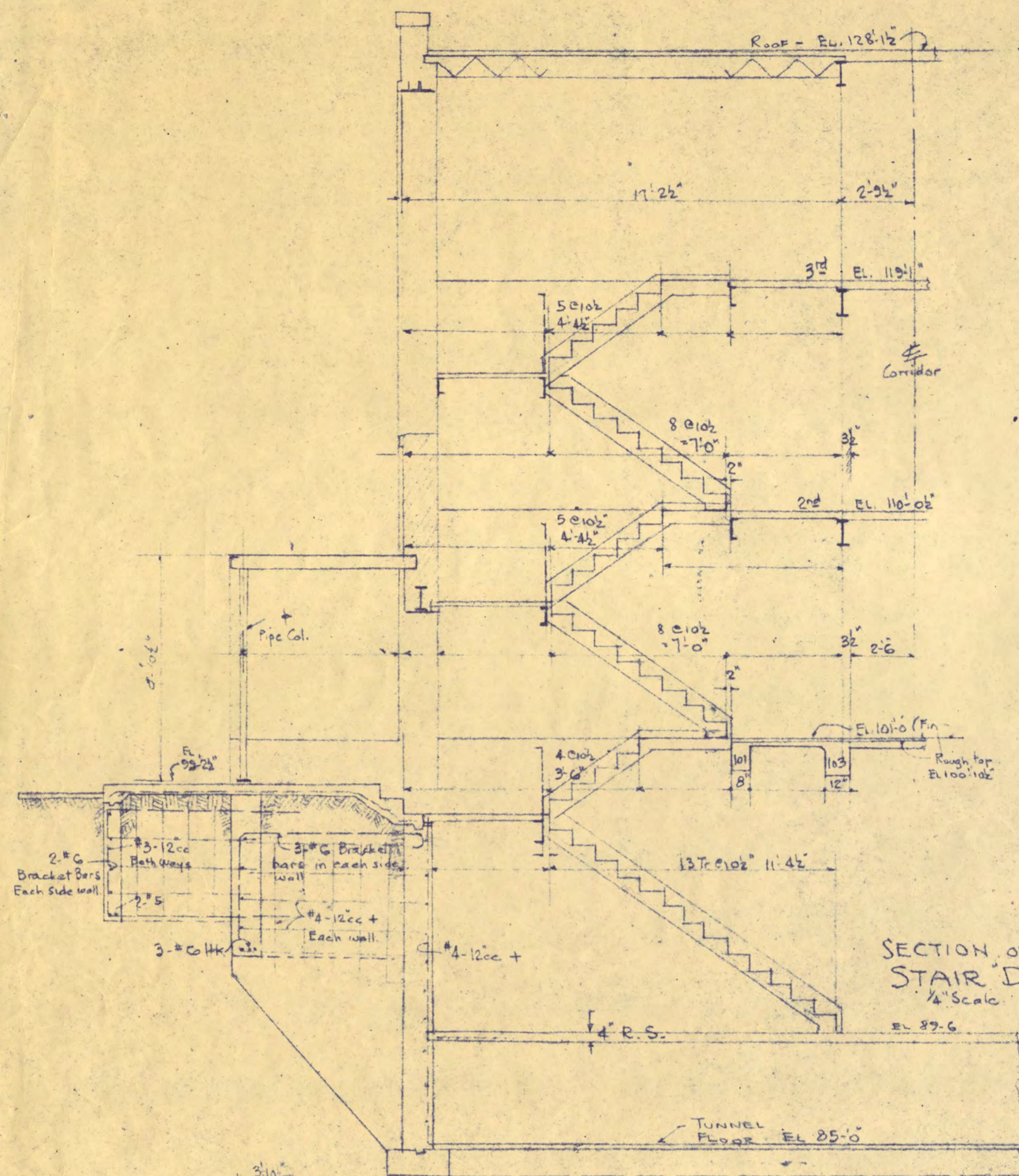
Sheet No. S2



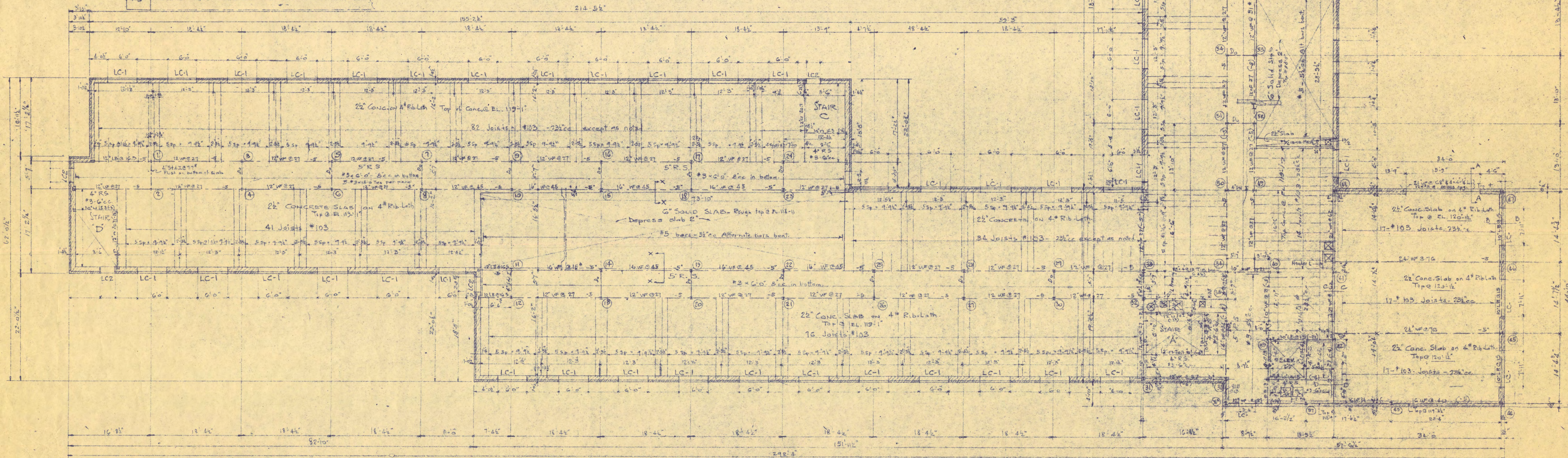
SECOND FLOOR FRAMING PLAN. 1/8" Scale.  
 Top @ EL. 110'-0"



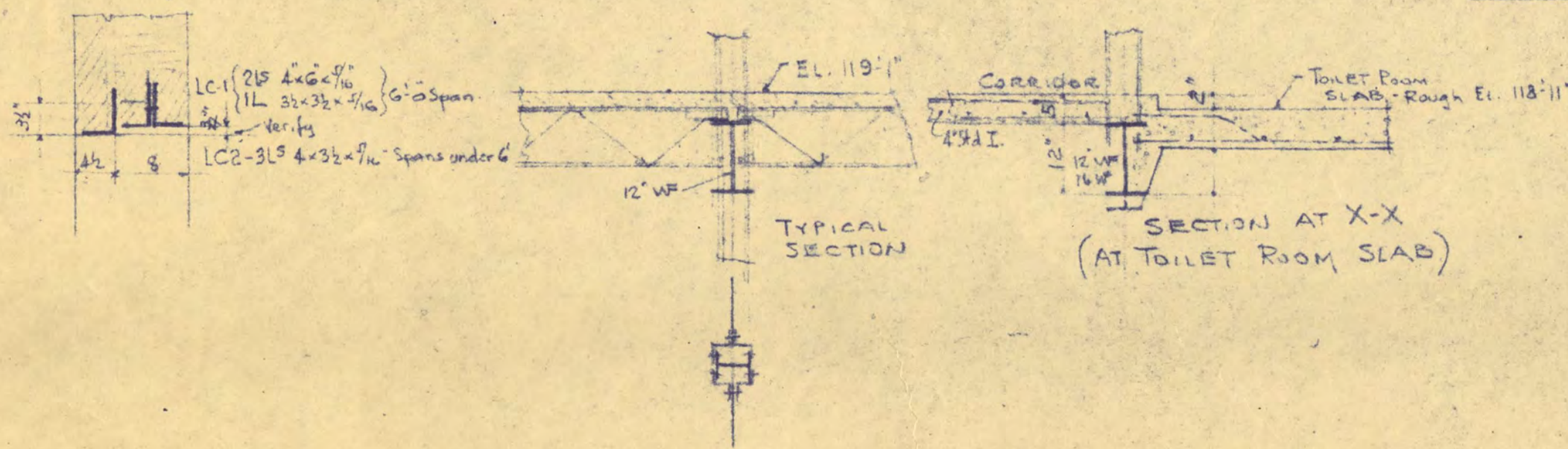
GIRLS DORMITORY, ST. CLOUD STATE TEACHERS COLLEGE, ST. CLOUD, MINNESOTA.		SHEET NO.
DESIGNED BY	FRANK W. JACKSON & ASSOCIATES INC. ARCHITECTS & ENGINEERS ST. CLOUD, MINN.	S. 2
ENGINEERED BY	SCHUETT-MEIER CO. STRUCTURAL ENGINEERS ST. PAUL, MINN.	P. 5
DATE		
APPROVED BY	<i>[Signature]</i>	
APPROVED BY	<i>[Signature]</i>	12



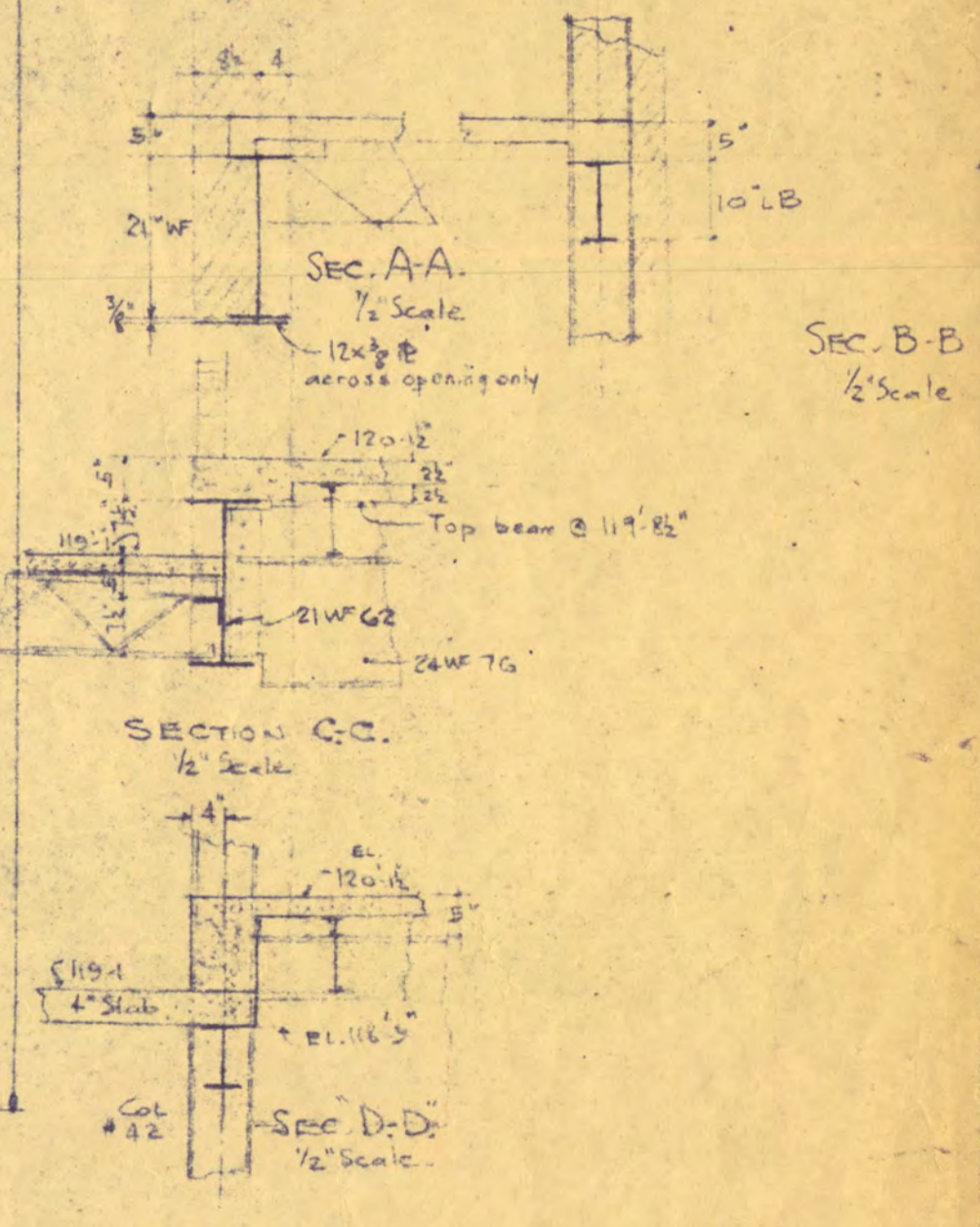
SECTION OF STAIR 'D'



THIRD FLOOR FRAMING PLAN - 1/8\"/>

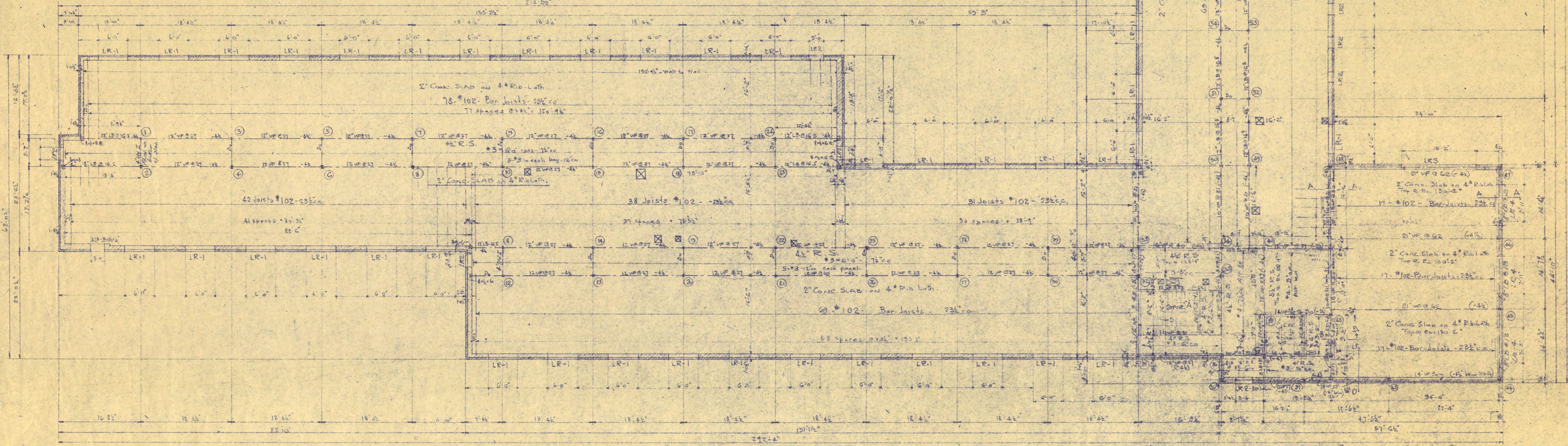
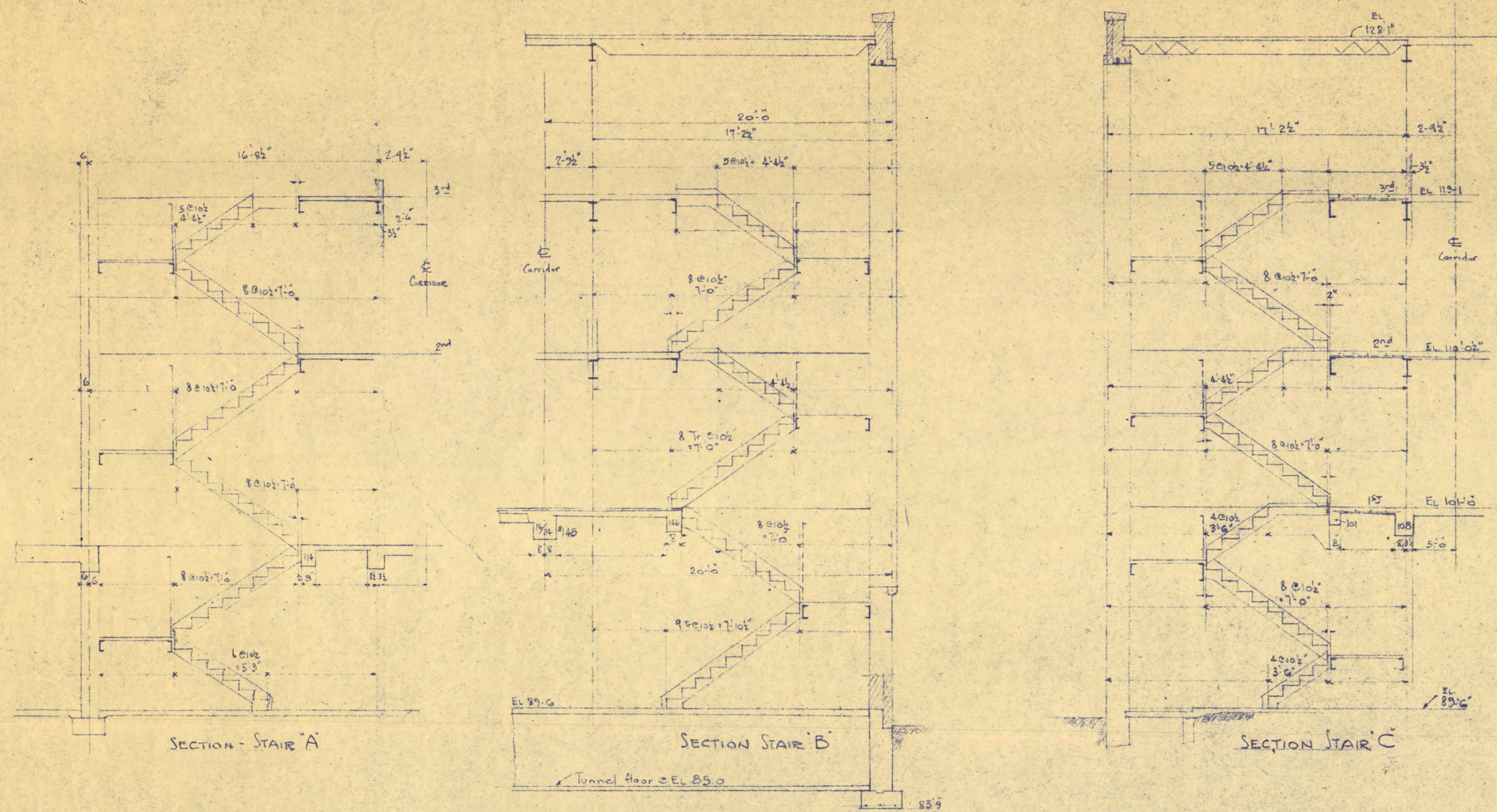


Note: Verify all mechanical equipment in slabs. SEE MECH. DRAWINGS & ARCHIT. DETAILS.



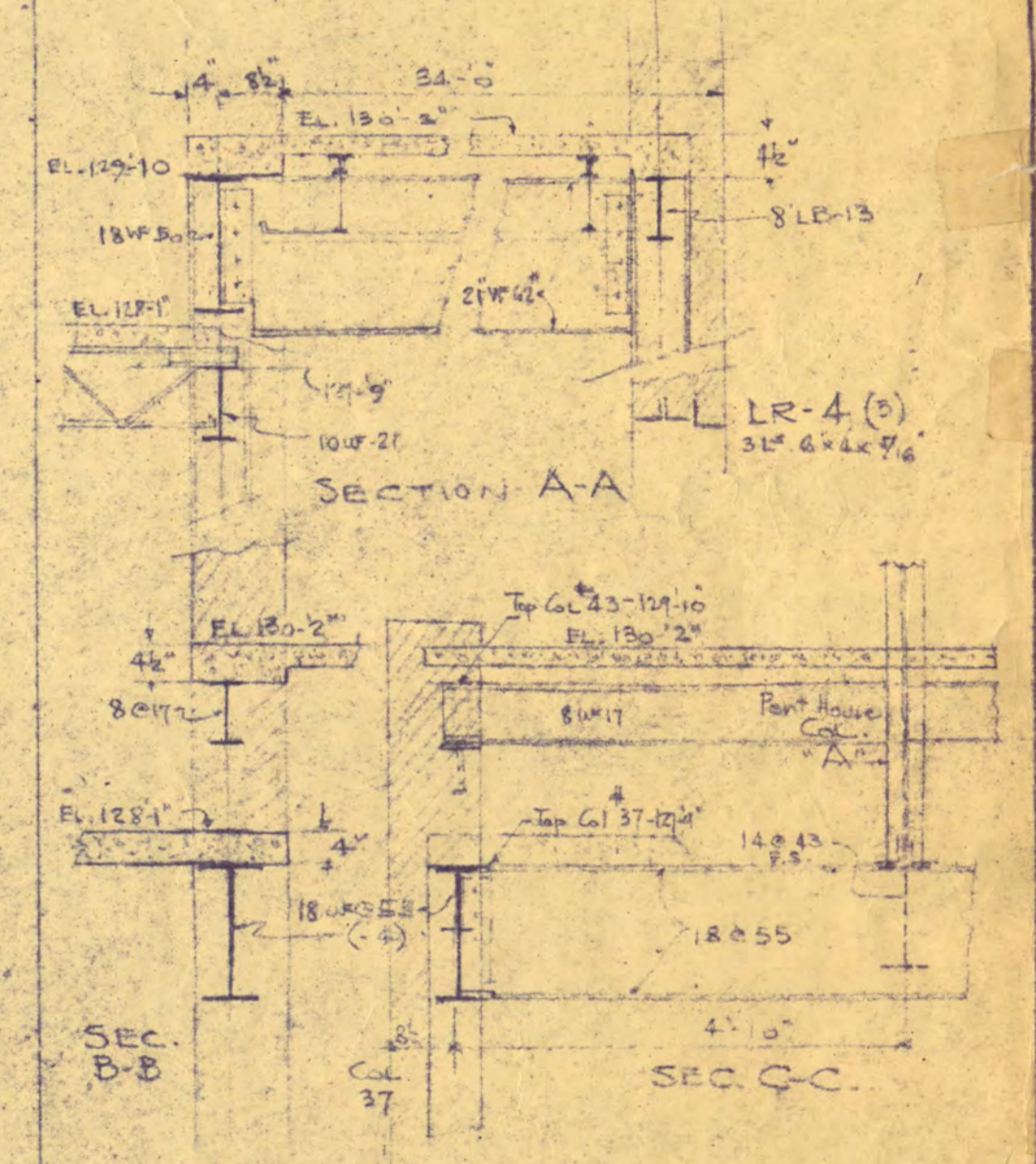
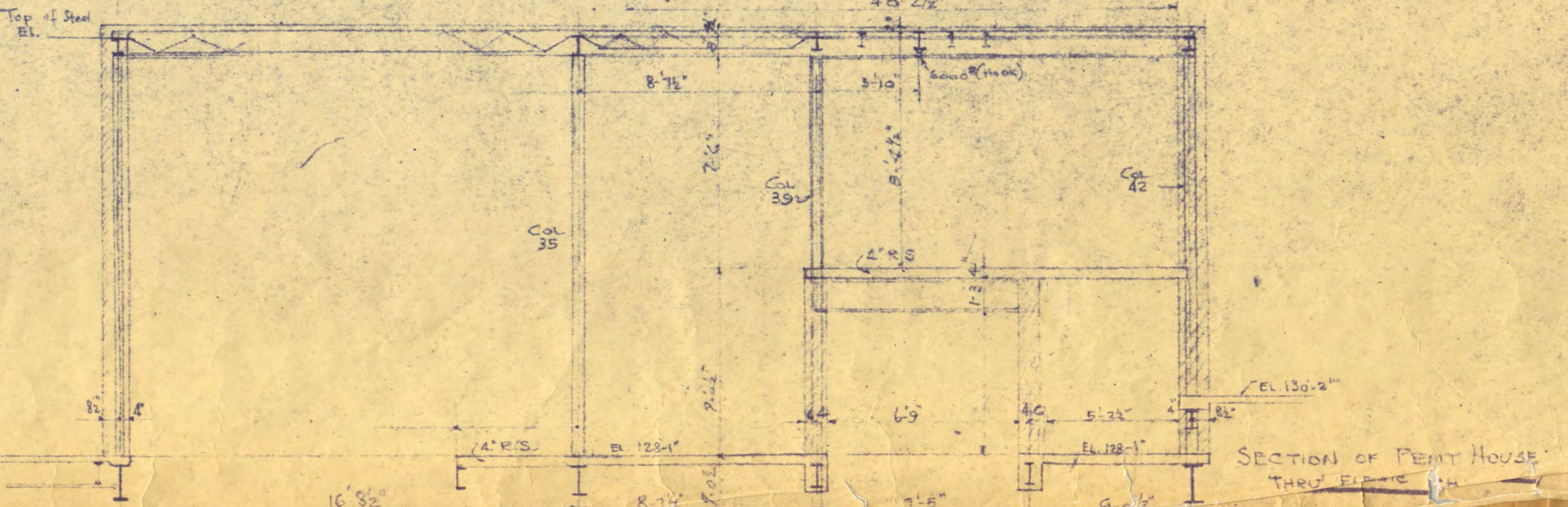
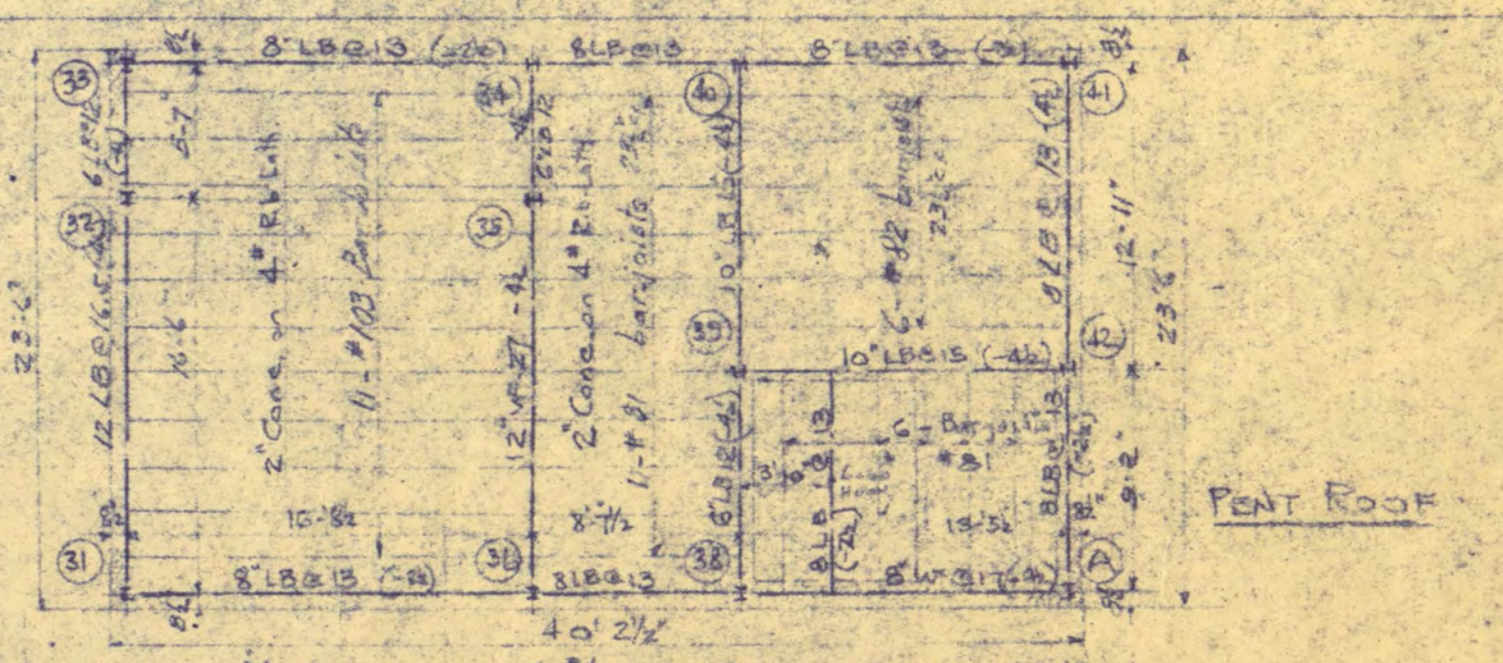
119-1

GIRLS DORMITORY ST. CLOUD STATE TEACHERS COLLEGE ST. CLOUD, MINNESOTA.		SHEET NO.
CONV. NO.	FRANK W. JACKSON & ASSOCIATES INC. ARCHITECTS & ENGINEERS ST. CLOUD, MINNESOTA.	54
DRAWN BY	SCHWETTMEIER CO. STRUCTURAL ENGINEERS ST. PAUL, MINN.	OF 5 PROJECT NO.
DATE		
REVISION	APPROVED BY <i>Signatures</i>	
	APPROVED BY <i>Signature</i>	13



ROOF FRAMING PLAN 1/4" Scale

Note: Temp. steel in all concrete slabs to be #3-12's. See Mech. Plans for all openings thru slab.



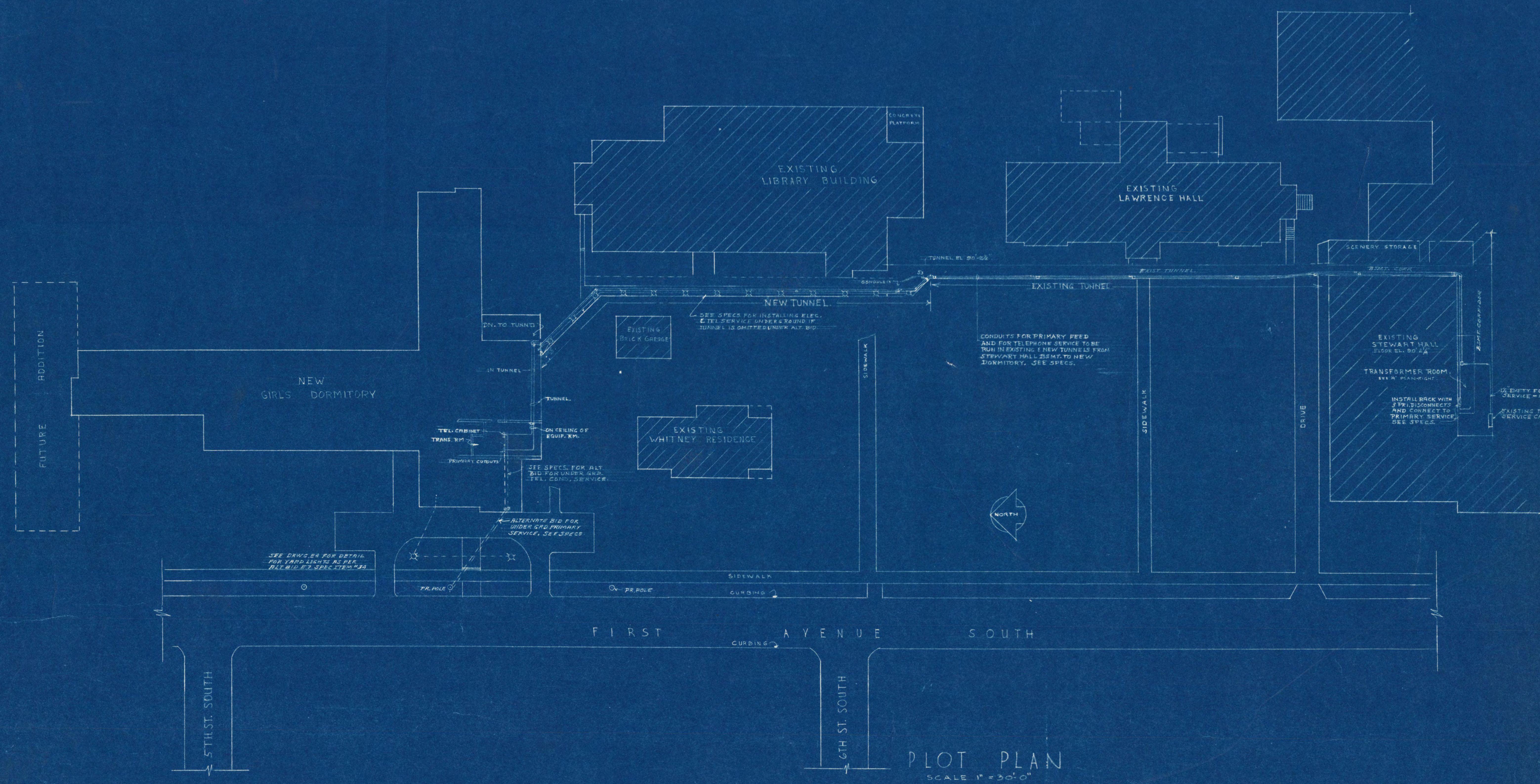
GIRLS DORMITORY  
ST. CLOUD STATE TEACHERS COLLEGE  
ST. CLOUD, MINNESOTA.

FRANK W. JACKSON ASSOCIATES, INC.  
ARCHITECTS & ENGINEERS  
ST. CLOUD, MINN.

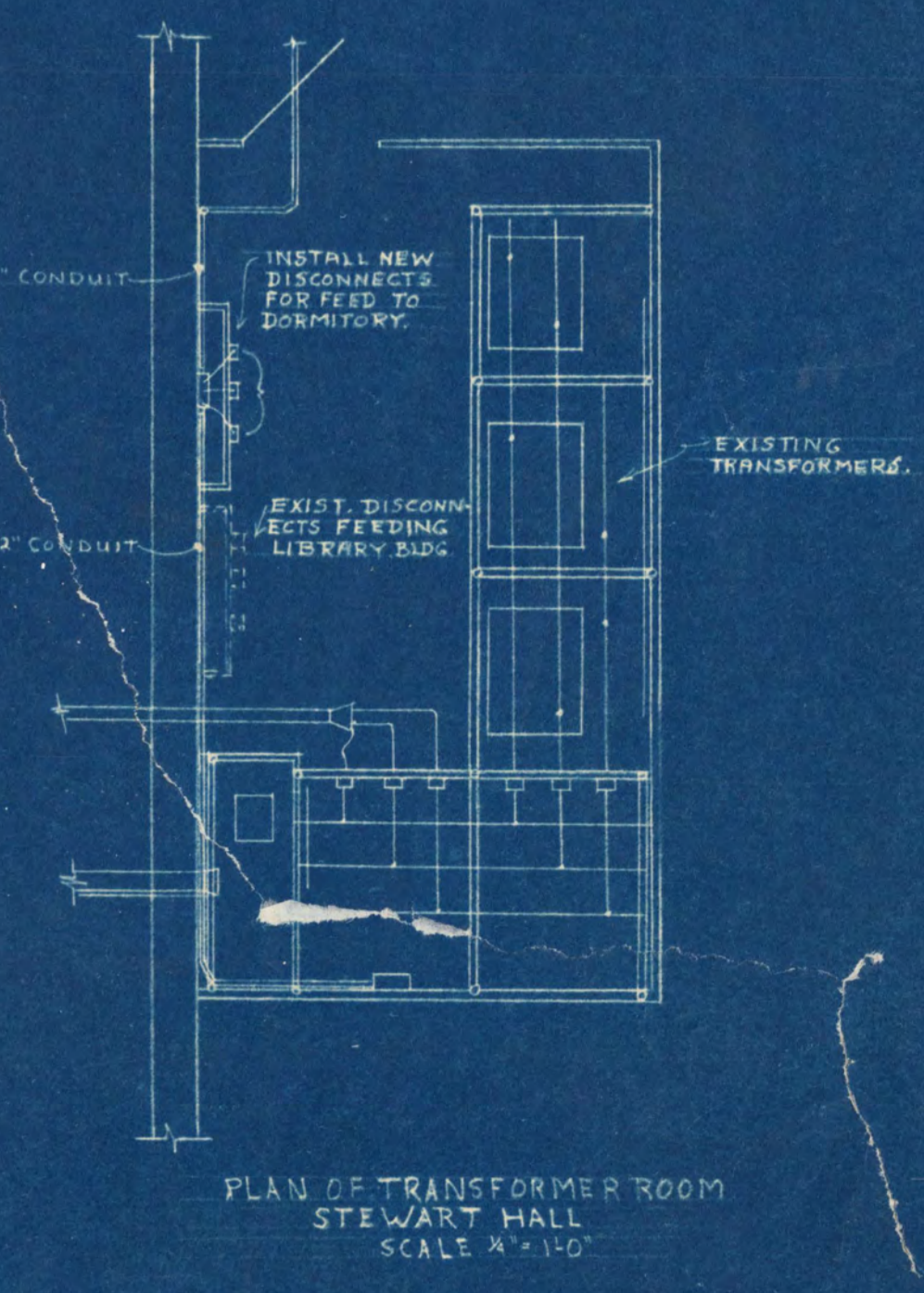
SCHUBERT ENGINEERS  
STRUCTURAL ENGINEERS  
ST. CLOUD, MINN.

APPROVED BY: *[Signature]*  
APPROVED BY: *[Signature]*

SHEET NO. 5-5  
OF 5  
PROJECT NO. 14



PLOT PLAN  
SCALE 1" = 30'-0"



PLOT PLAN-ELECTRICAL	
GIRL'S DORMITORY ST. CLOUD STATE TEACHERS COLLEGE ST. CLOUD, MINNESOTA	
DATE: 1/15/16	PROJECT NO. E1
DESIGNED BY: FRANK W. JACKSON & ASSOCIATES INC. ARCHITECTS ST. CLOUD, MINNESOTA	
DRAWN BY: G. M. ORR ENGINEERING CO. MINNEAPOLIS, MINNESOTA	
CHECKED BY: JOHN J. ORR	
APPROVED BY: <i>[Signature]</i>	
APPROVED BY: <i>[Signature]</i>	

I hereby certify that this plan, specification report was prepared by me or under my direct supervision and that I am a duly licensed Professional Engineer and registered in the State of Minnesota.

*[Signature]*

DATE: JUNE 12, 1916, Eng. No. 752