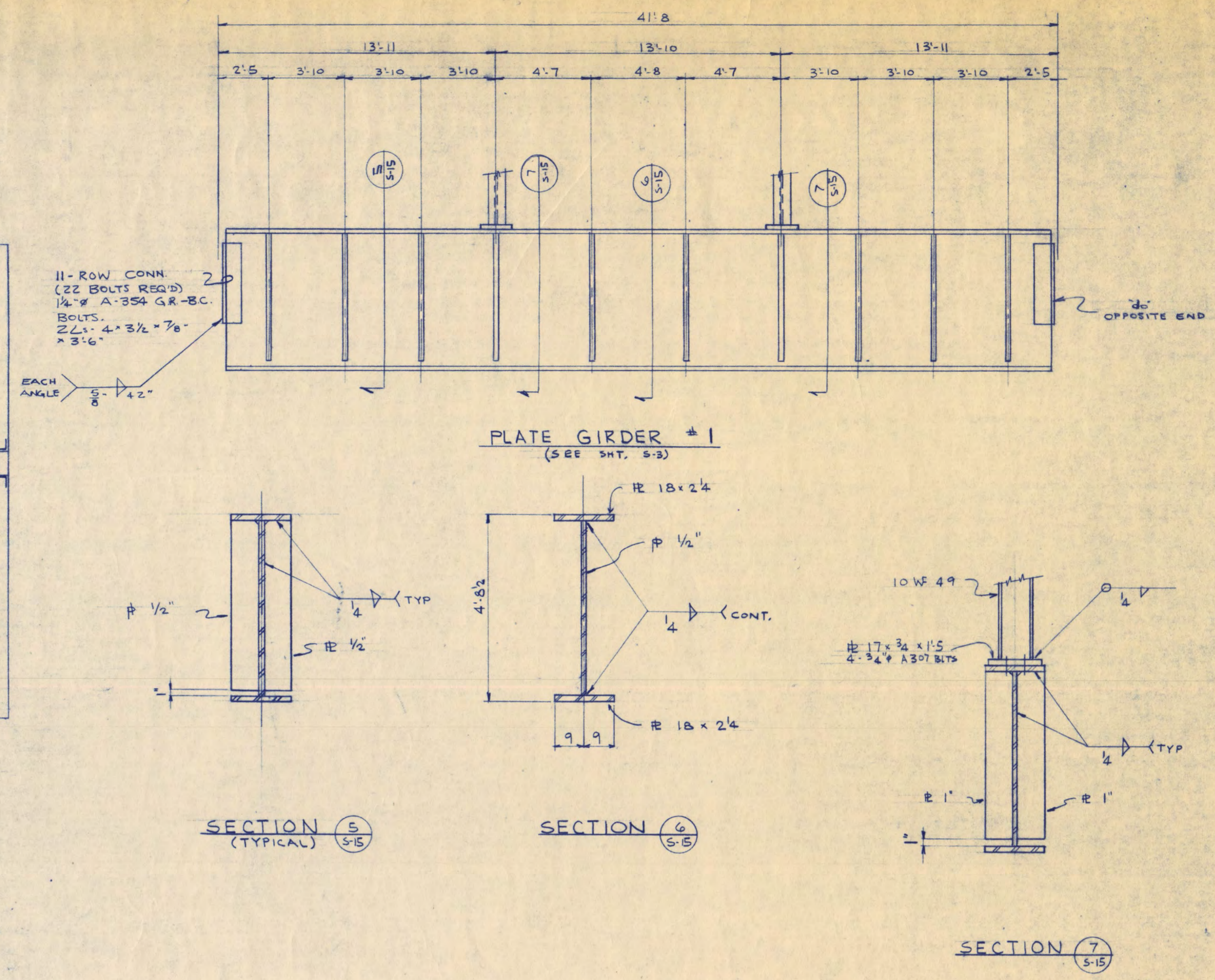
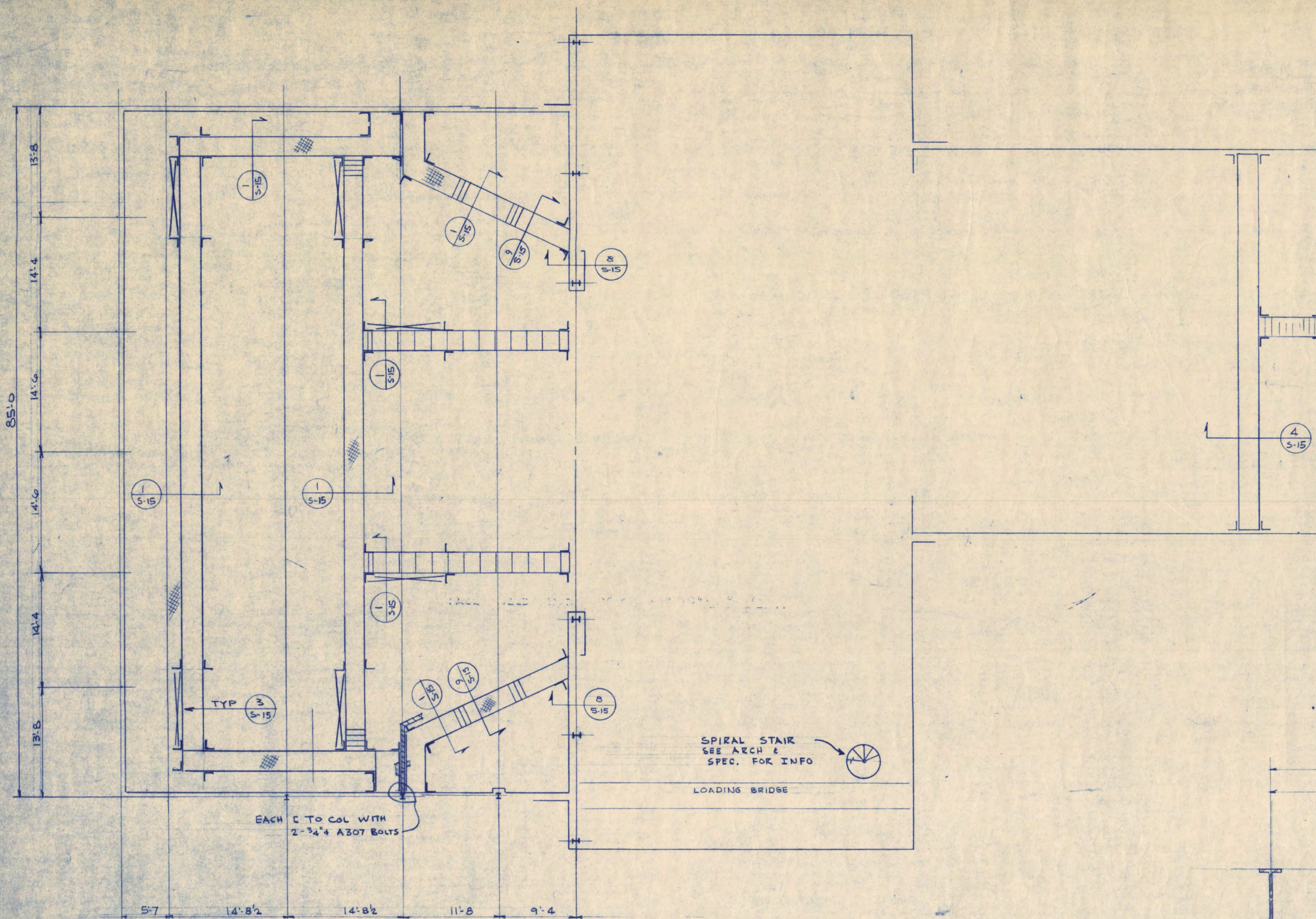
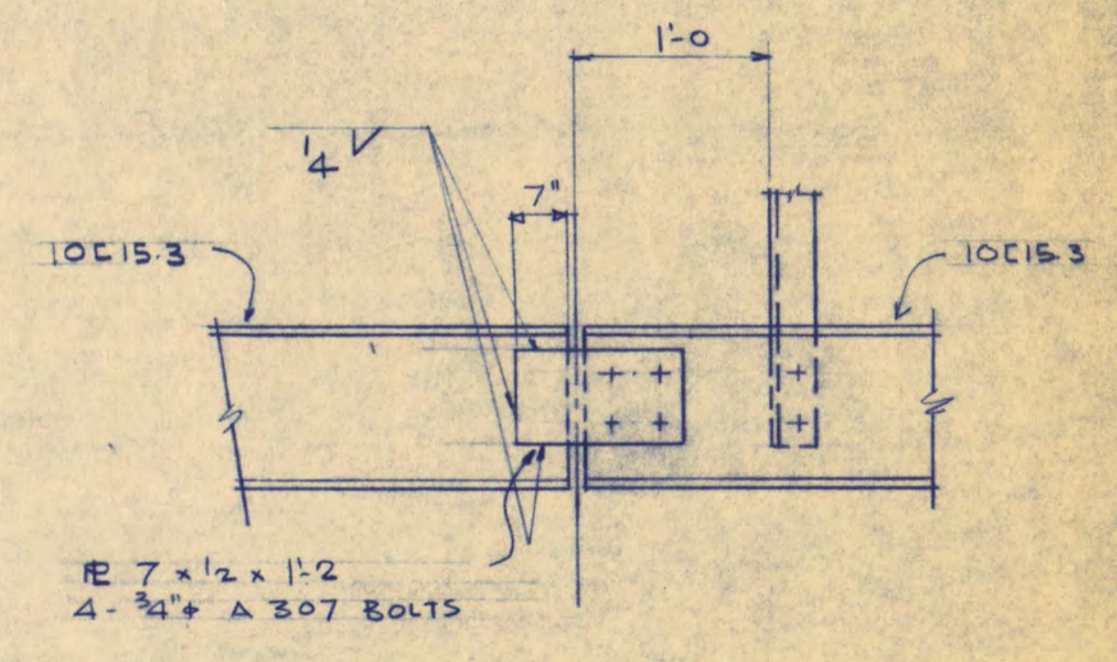
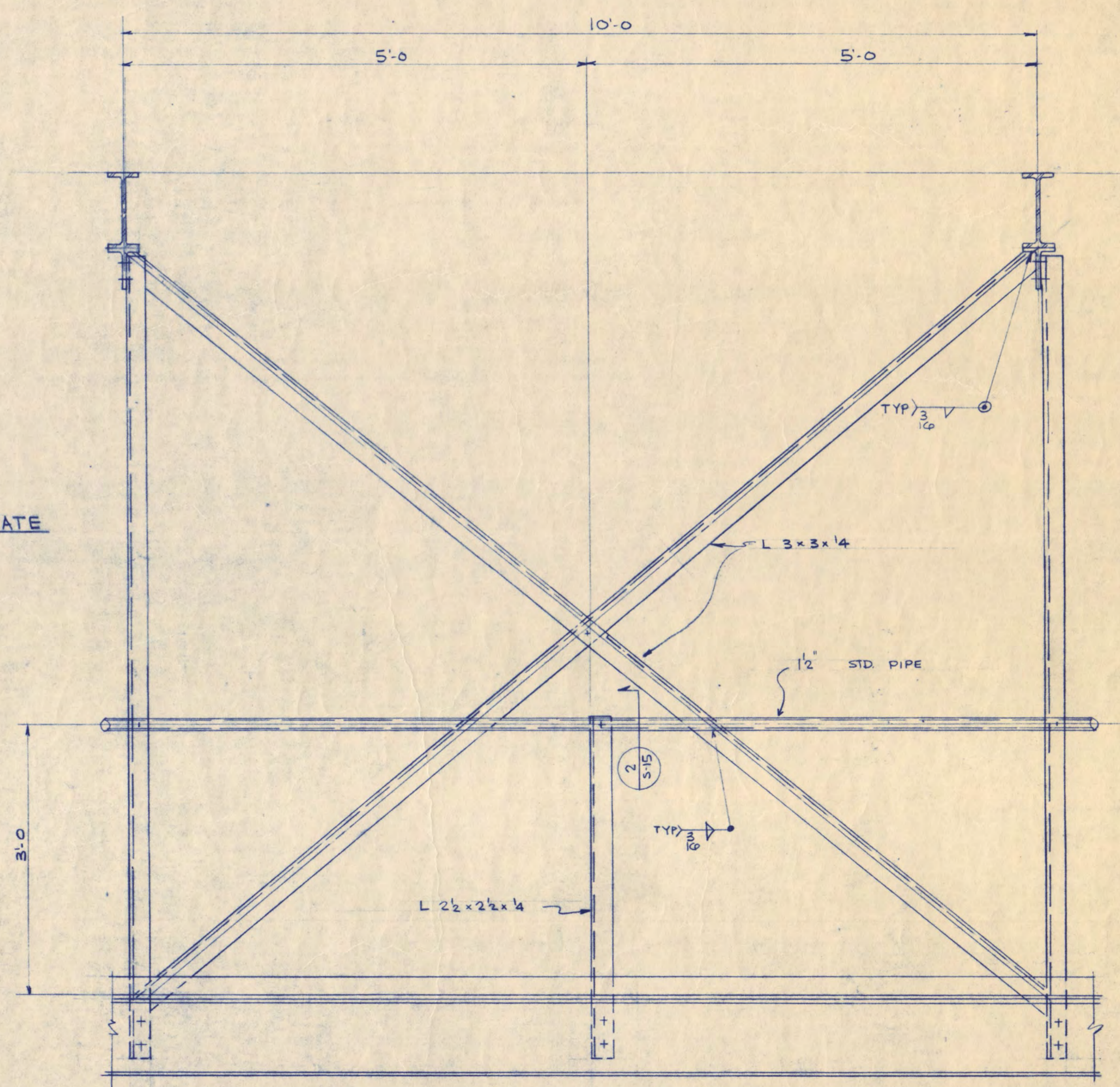
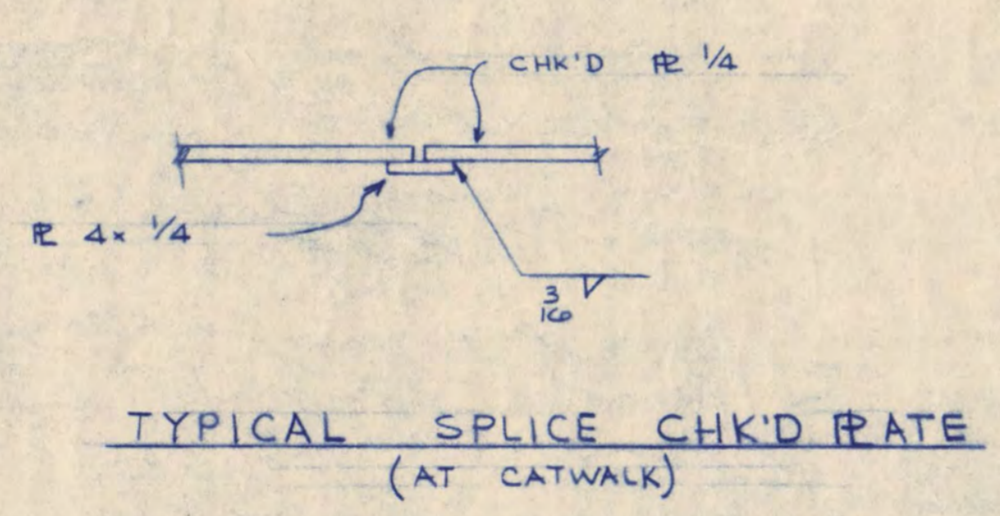
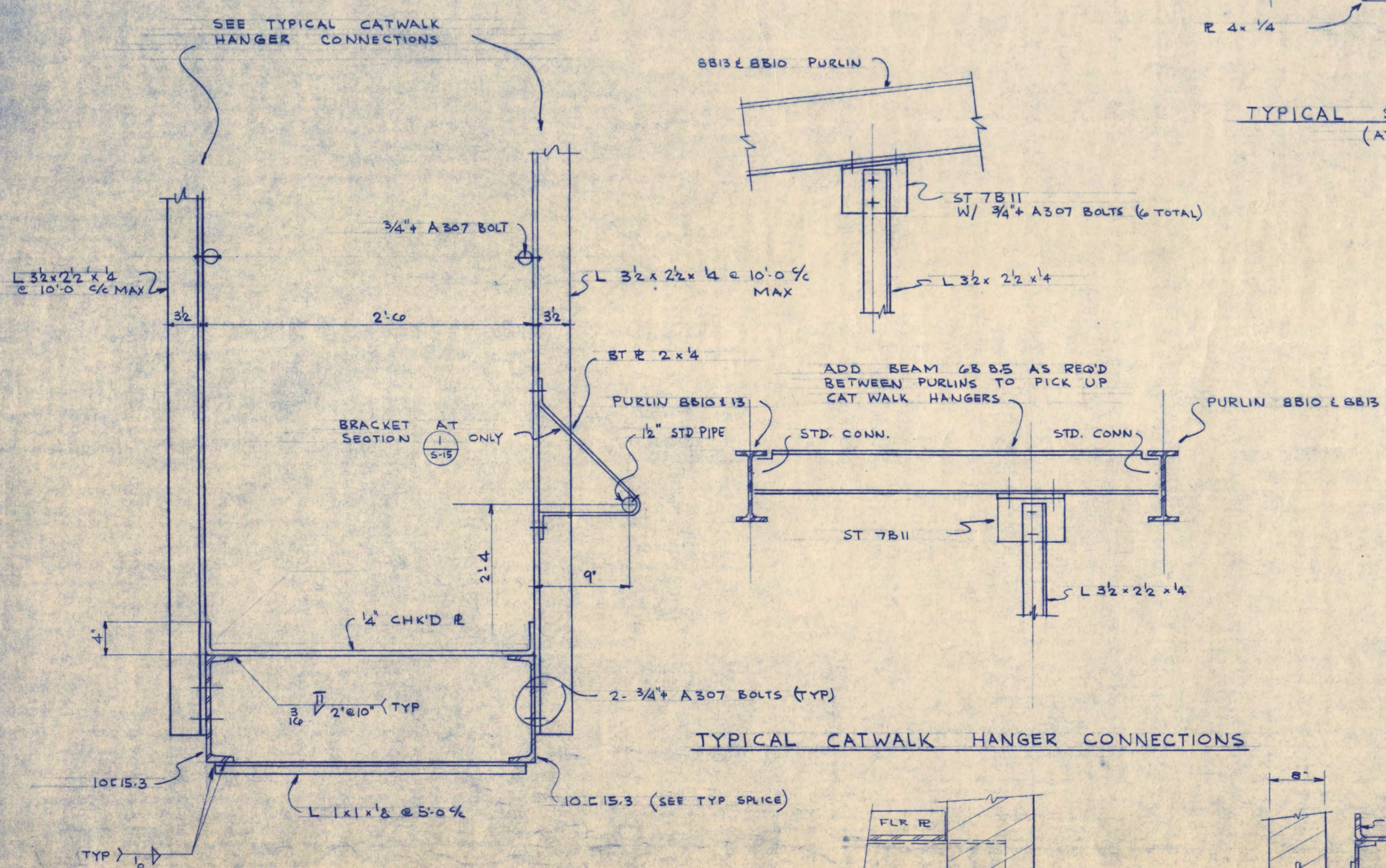


WALTER BUTLER COMPANY HAARSTICK LUNDGREN AND ASSOCIATES INC. ARCHITECTS ST. PAUL MINN. ENGINEERS ST. PAUL MINN.	
FINE ARTS BUILDING ST. CLOUD STATE COLLEGE ST. CLOUD, MINNESOTA	
DEPARTMENT OF ADMINISTRATION - STATE OF MINNESOTA ST. PAUL, MINNESOTA A. J. NELSON STATE ARCHITECT	
STATE PROJECT NO. 3750 COMM. NO. 6401 DATE T-10-35 DRAWN BY D.M. CHECKED BY S.B.	APPROVED BY: _____ PRESIDENT, ST. CLOUD STATE COLLEGE APPROVED BY: _____ EXECUTIVE DIRECTOR, STATE COLLEGE BOARD APPROVED BY: _____ COMMISSIONER OF ADMINISTRATION (AN AUTHORIZED SIGNATURE) I HEREBY CERTIFY THAT THIS DRAWING WAS PREPARED BY ME OR UNDER MY DIRECT SUPERVISION AND THAT I AM A REGISTERED UNDER THE LAWS OF THE STATE OF MINN. REG. NO. _____ S-14 REV. DATE 5-16-66
SHEET NO. 11 OF 17 SHEETS STRUCTURAL GRID IRON SECTIONS & DETAILS	

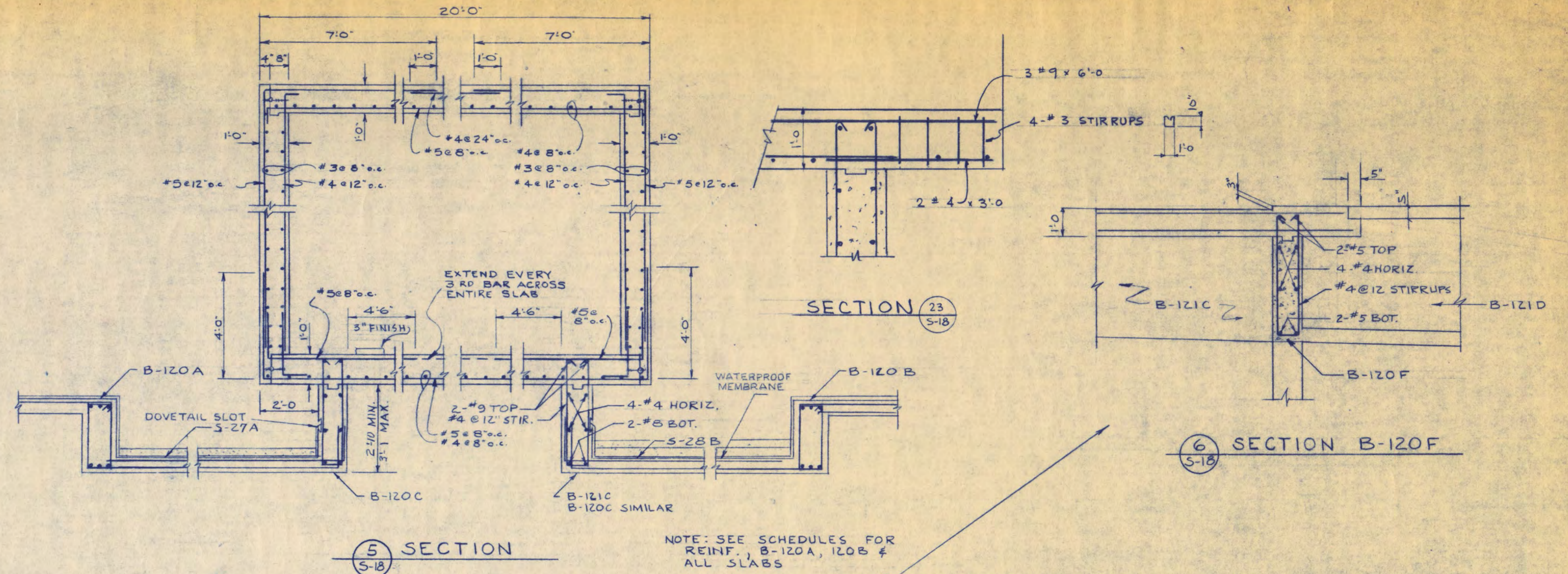
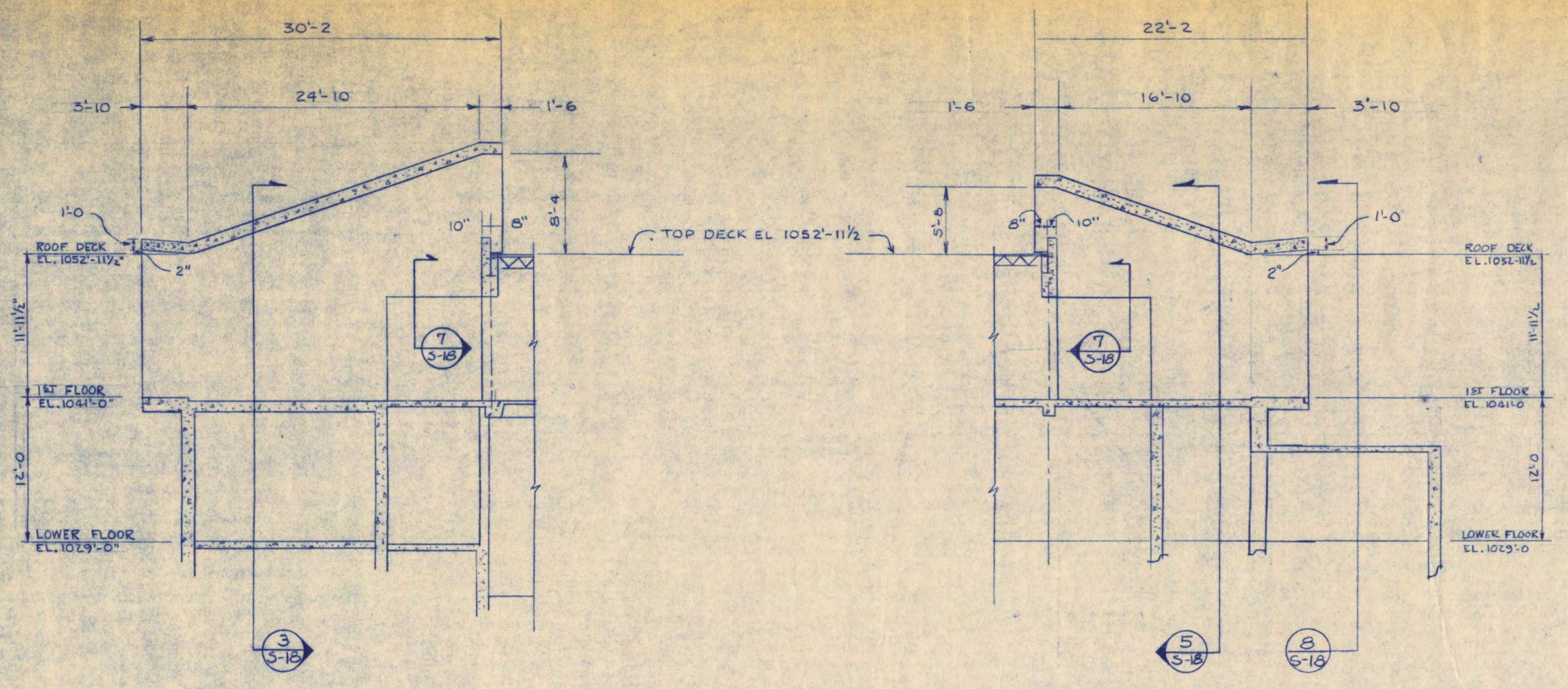


CATWALK PLAN

SEE ARCH. PLAN FOR LOCATION AND ELEVATIONS OF CATWALK SHEET A-12. ALL HANGERS @ 10'-0" MAX UNLESS SHOWN. CATWALK ALL WELDED CONSTRUCTION UNLESS SHOWN.

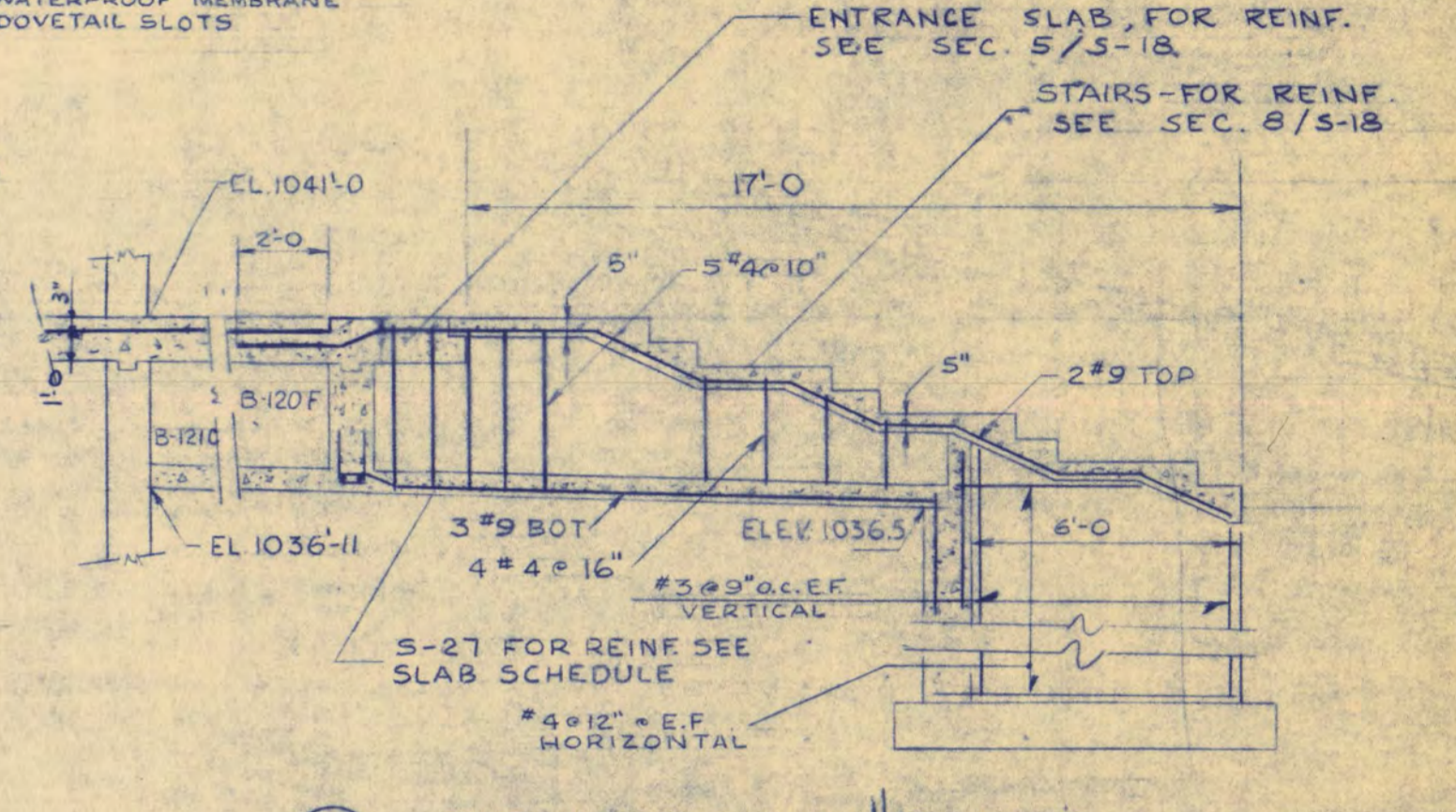
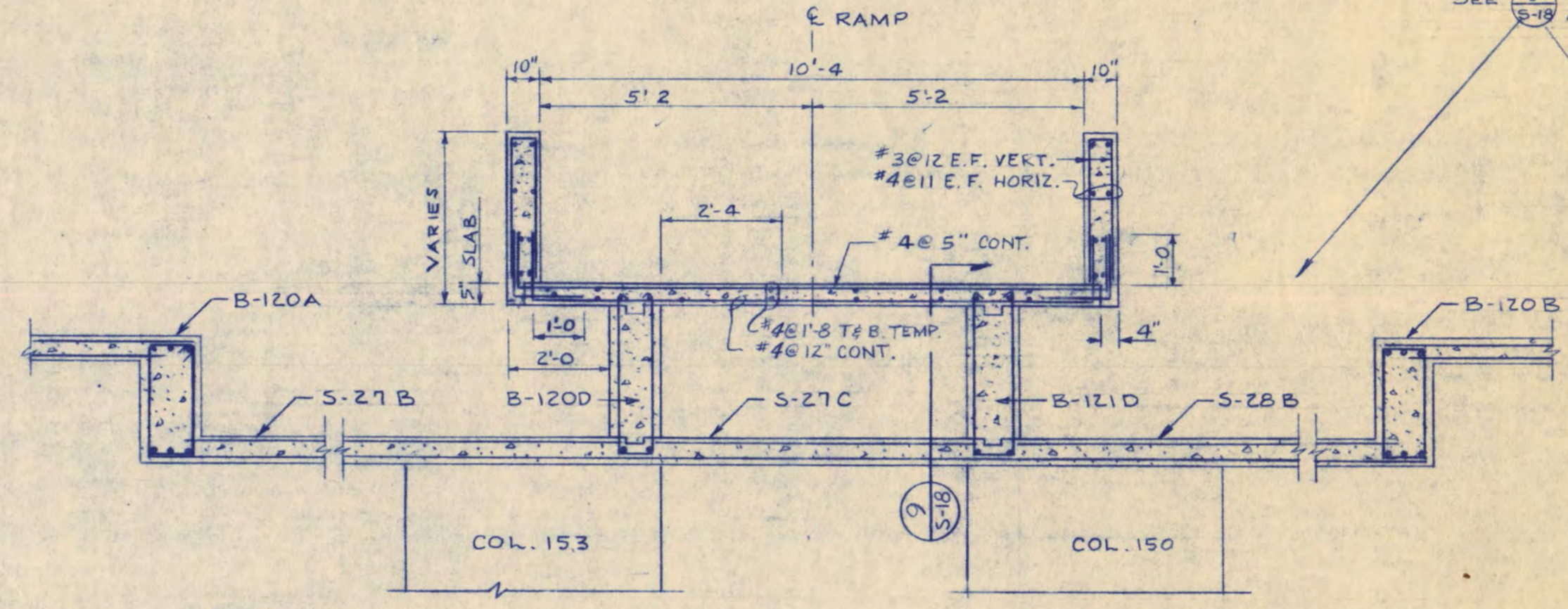
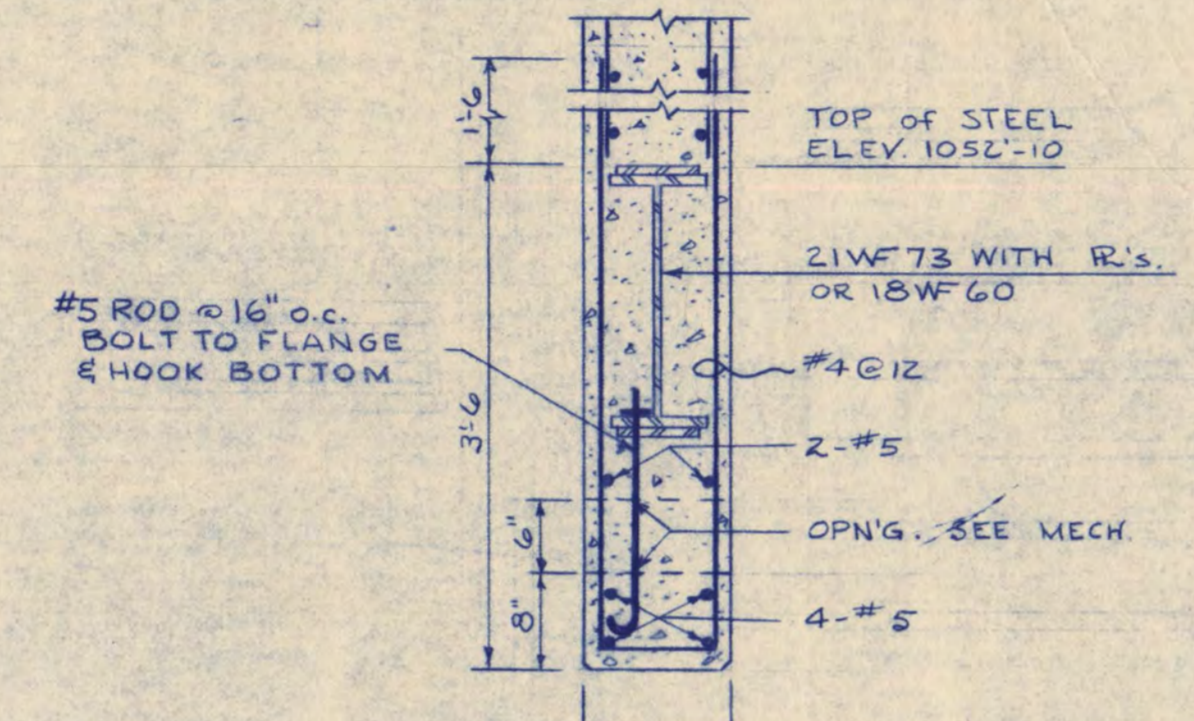
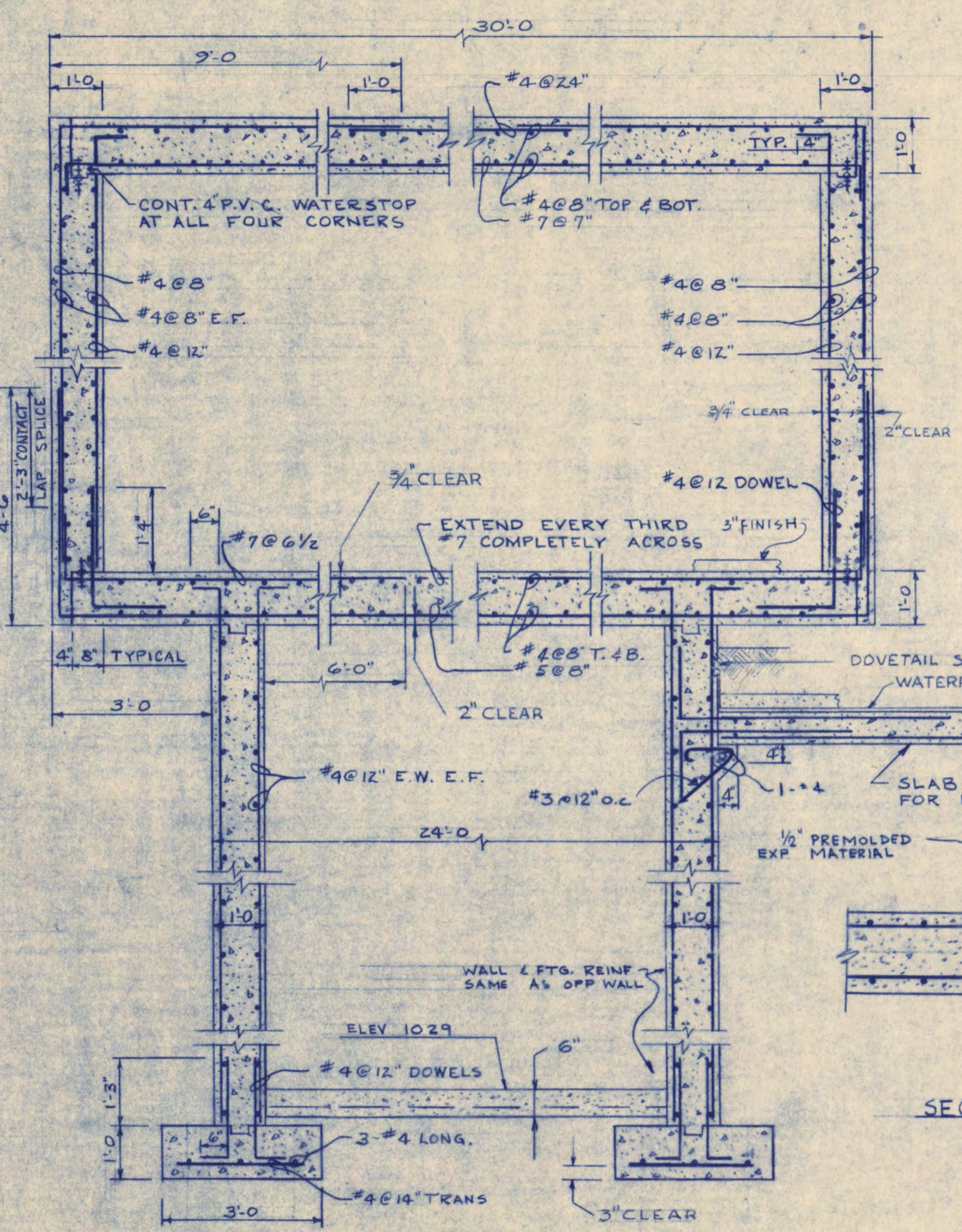


WALTER BUTLER COMPANY	
HAARSTICK LUNDGREN AND ASSOCIATES INC.	
ARCHITECTS ST. PAUL	ENGINEERS MINN.
FINE ARTS BUILDING	
ST. CLOUD STATE COLLEGE ST. CLOUD, MINNESOTA	
DEPARTMENT OF ADMINISTRATION - STATE OF MINNESOTA ST. PAUL, MINNESOTA	
A. J. NELSON	STATE ARCHITECT
STATE PROJECT NO. 3750	APPROVED BY: _____ PRESIDENT, ST. CLOUD STATE COLLEGE
CONTRACT NO. 6401	APPROVED BY: _____ EXECUTIVE DIRECTOR, STATE COLLEGE BOARD
DATE 7-16-65	APPROVED BY: _____ COMMISSIONER OF ADMINISTRATION (AN AUTHORIZED SIGNATURE)
DRAWN BY J.M.	I HEREBY CERTIFY THAT THIS DRAWING WAS PREPARED BY ME OR UNDER MY DIRECT SUPERVISION AND THAT I AM A REGISTERED ENGINEER UNDER THE LAWS OF THE STATE OF MINNESOTA.
CHECKED BY S.B.	REG. NO. _____
SHEET NO. 5-15	STRUCTURAL
REV. DATE 5-16-66	CATWALK PLAN & SECTIONS
OF 17 SHEETS	



1 WEST ENTRANCE SECTION

2 EAST ENTRANCE SECTION

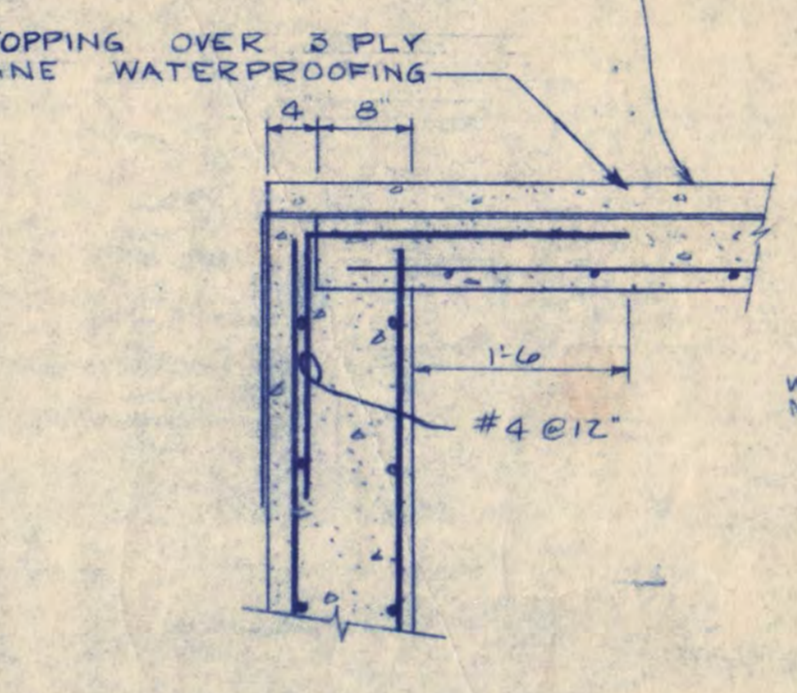
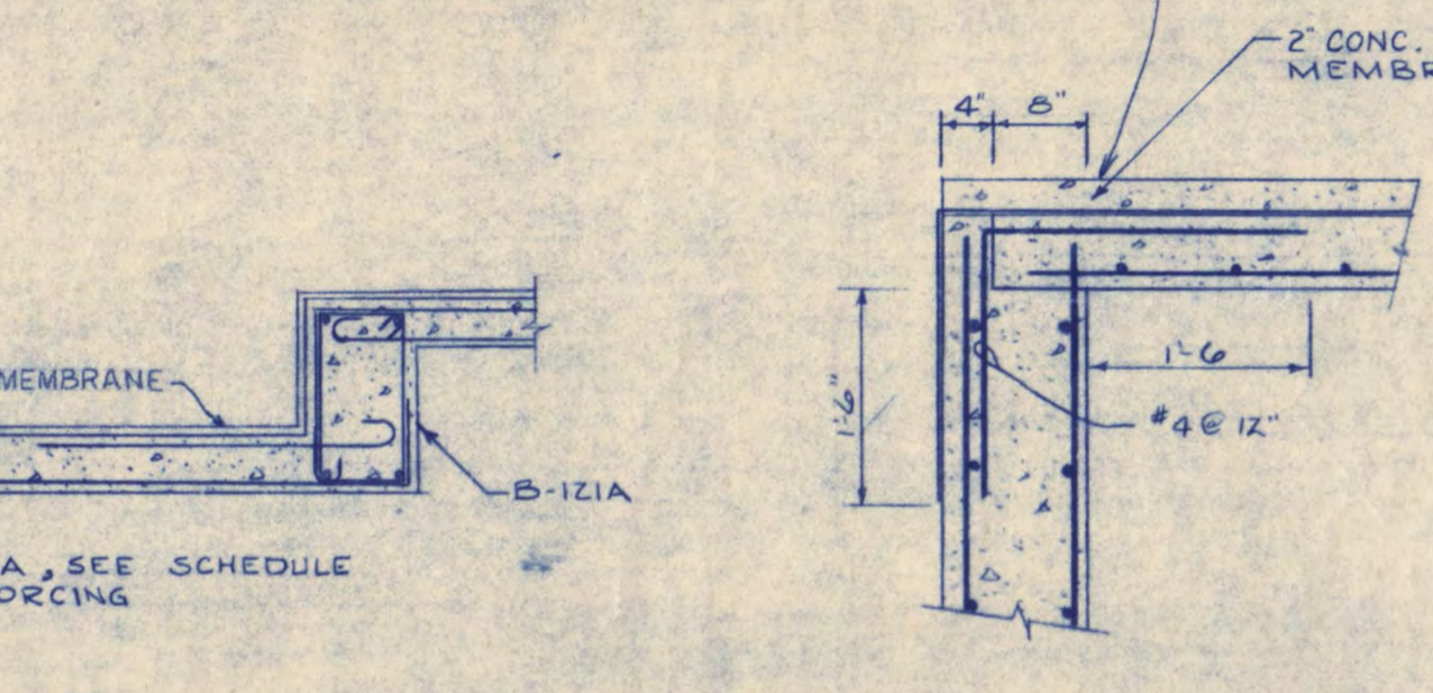
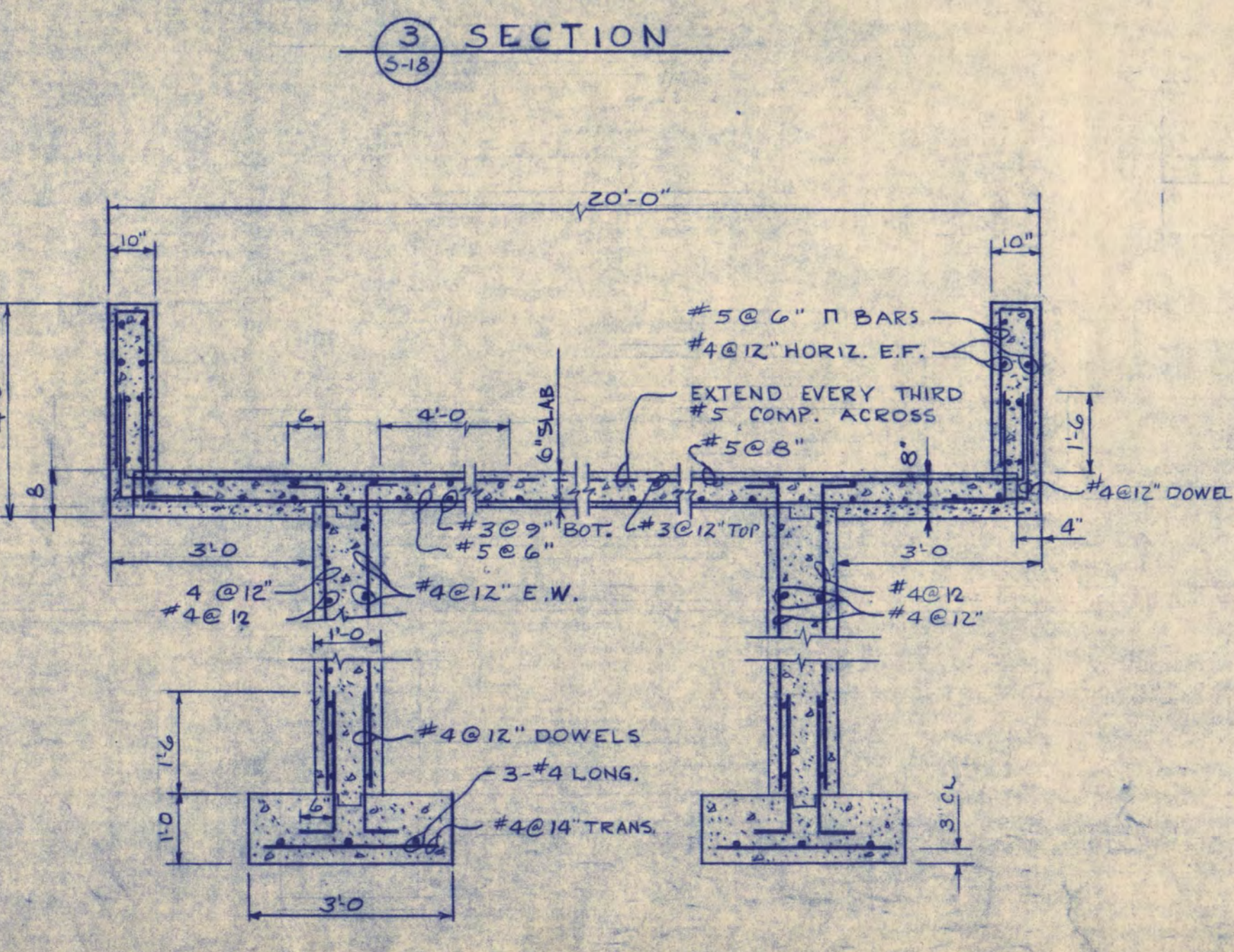


5 SECTION

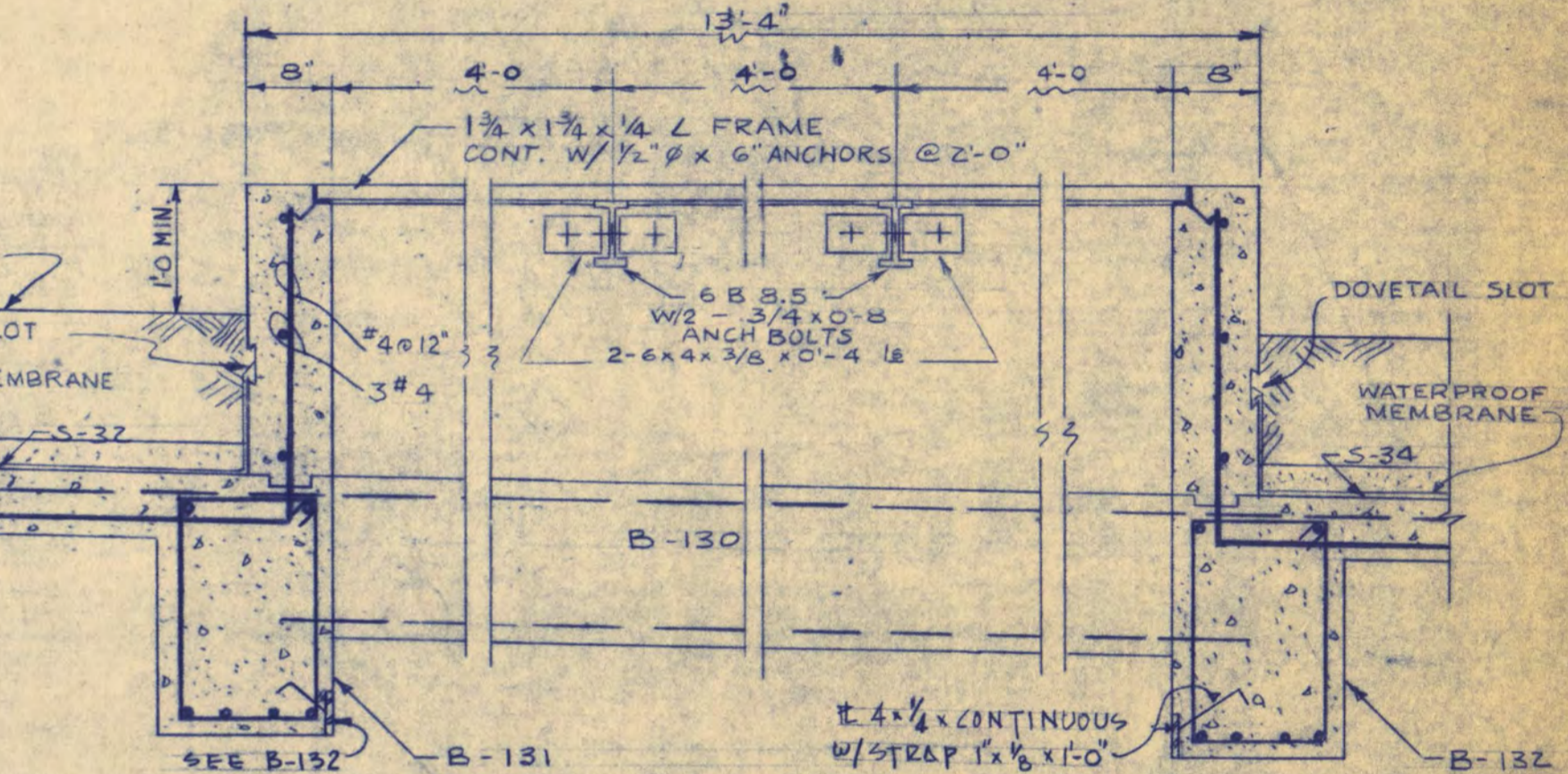
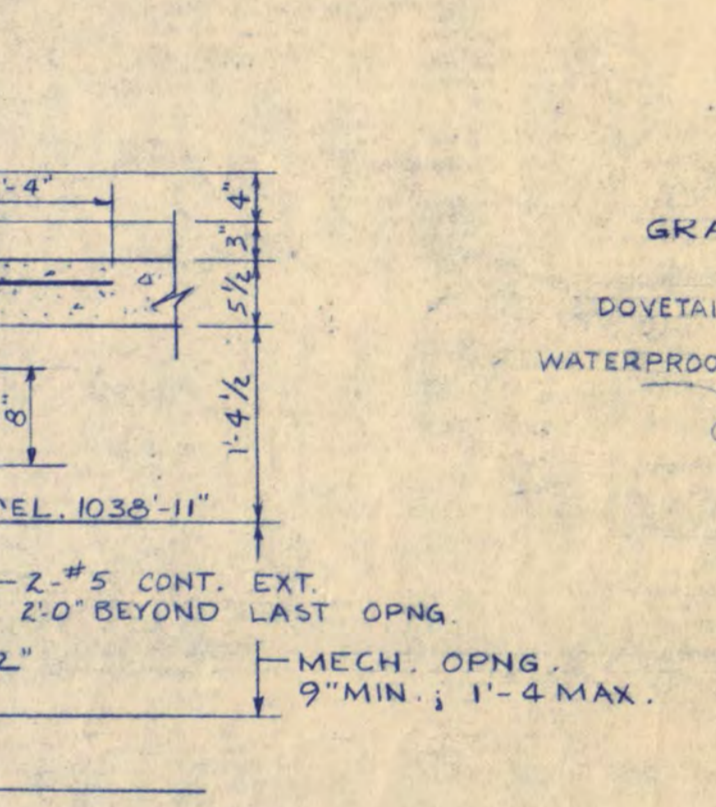
NOTE: SEE SCHEDULES FOR REINF. B-120A, 120B & ALL SLABS

SEE 5 FOR WATERPROOF MEMBRANE AND DOVETAIL SLOTS

9 REINFORCING B-121D B-120D SIMILAR



8 SECTION



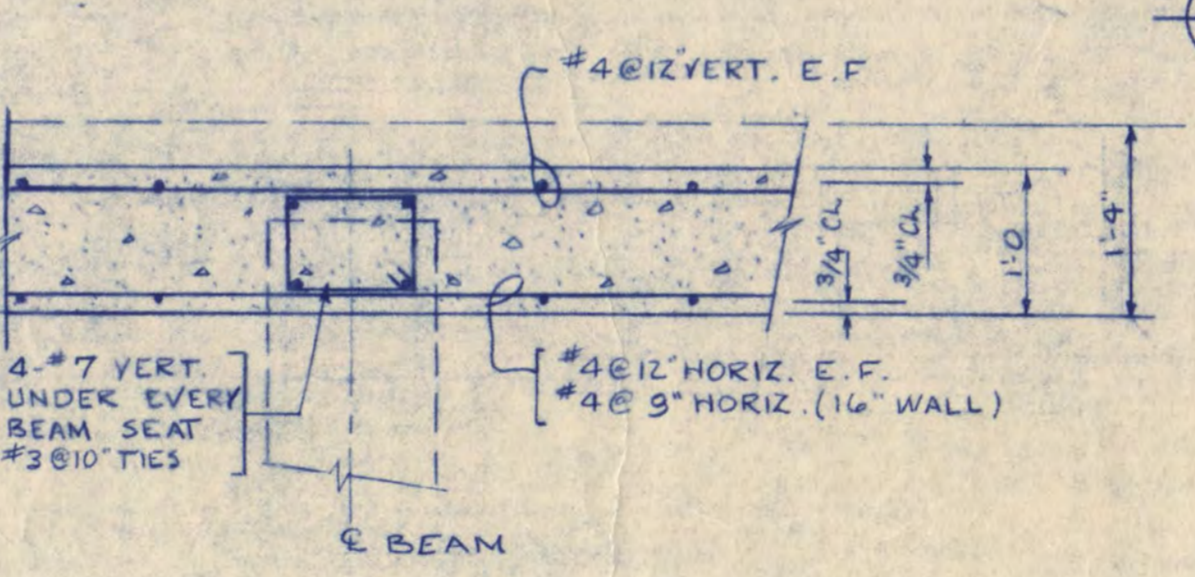
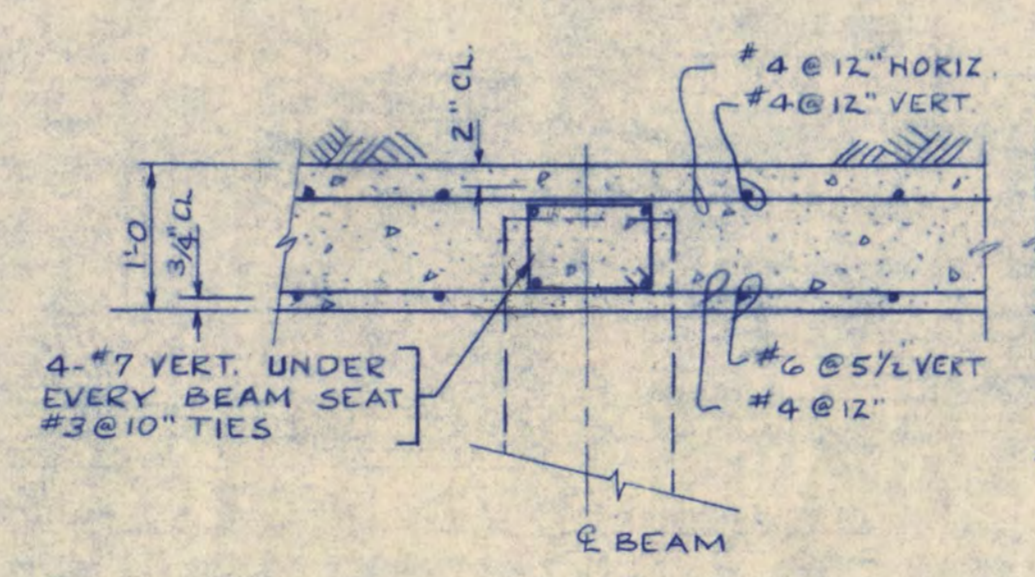
10 SECTION

11 SECTION

12 SECTION

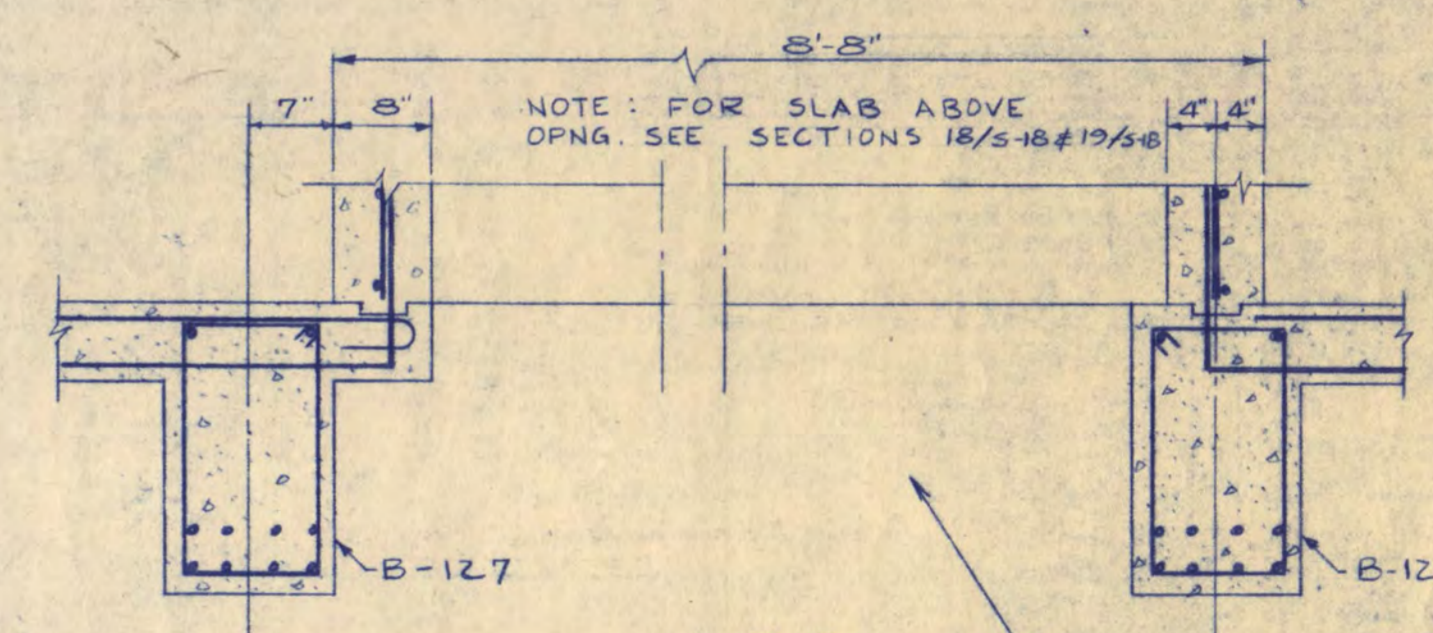
13 SECTION

SECTION 22

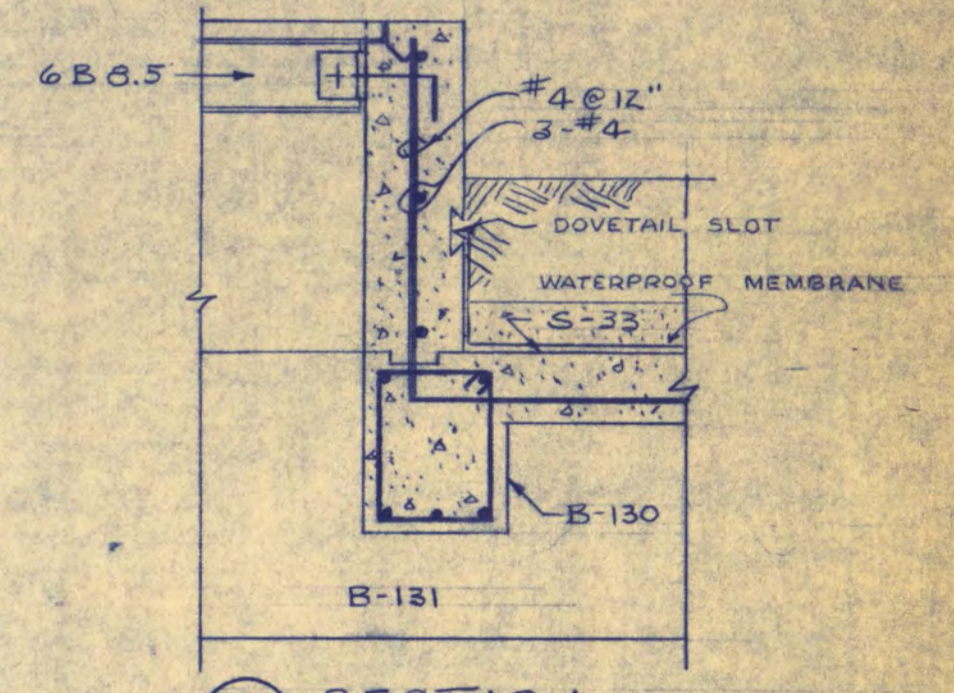


14 SECTION

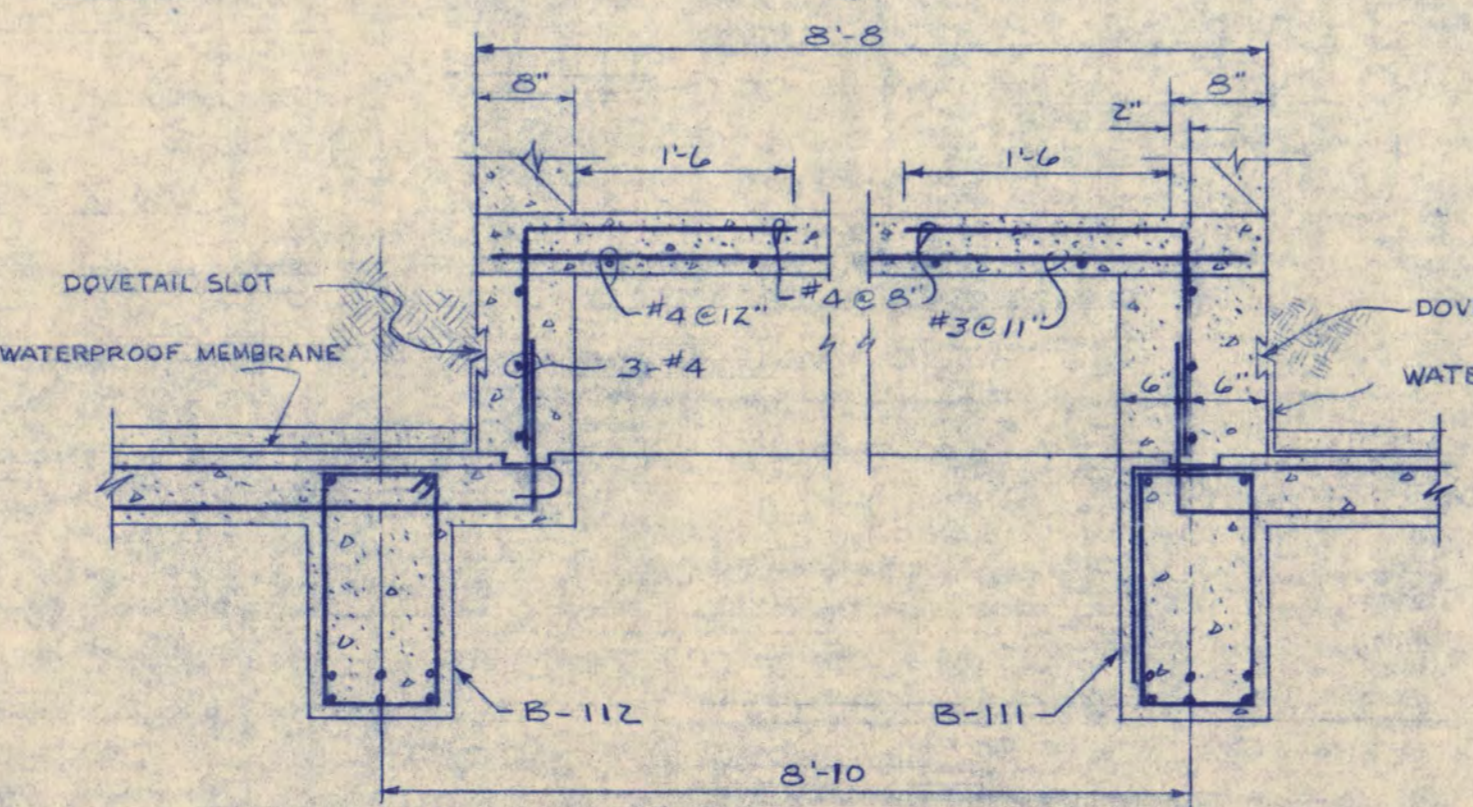
15 SECTION



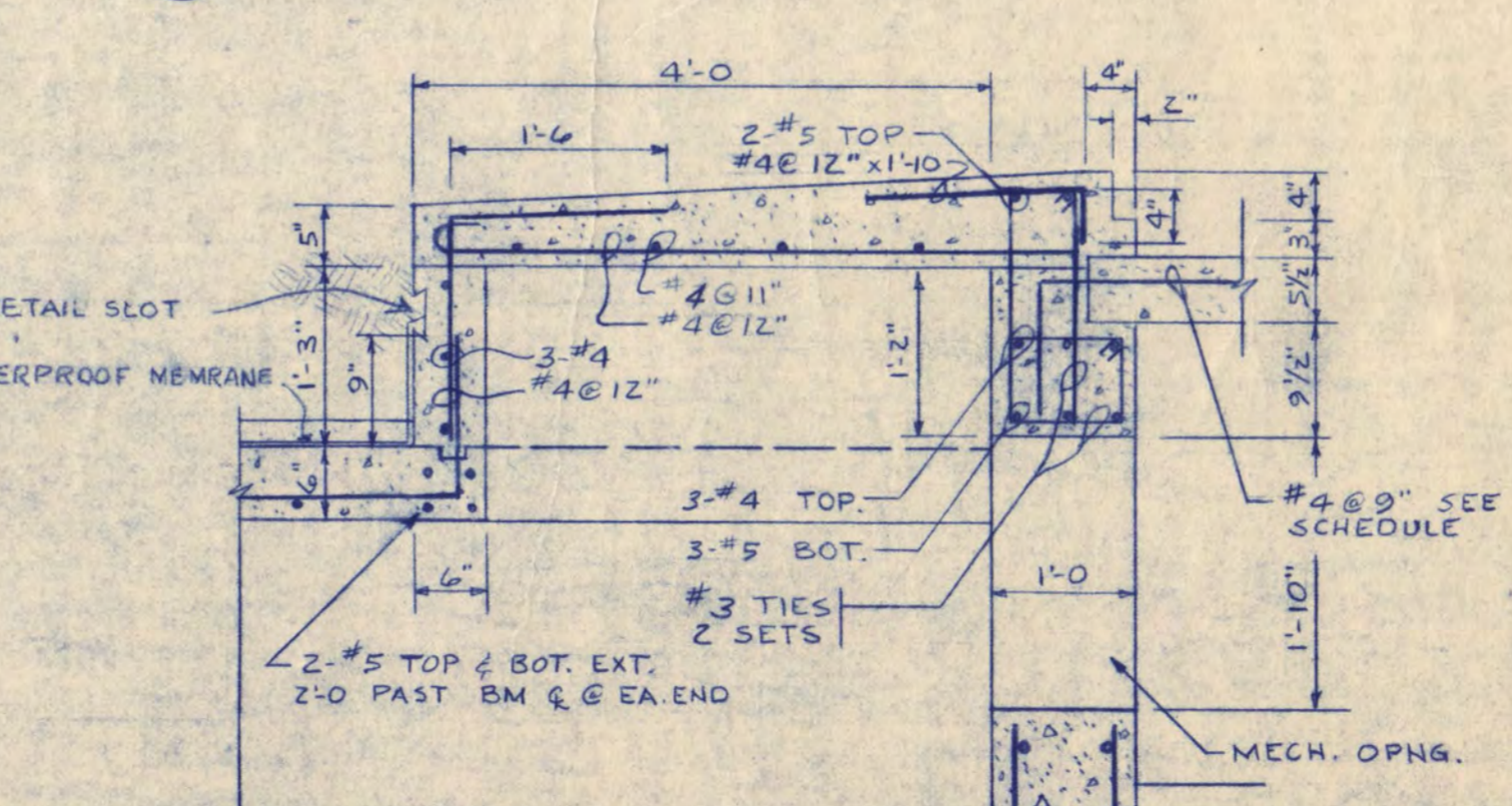
16 SECTION



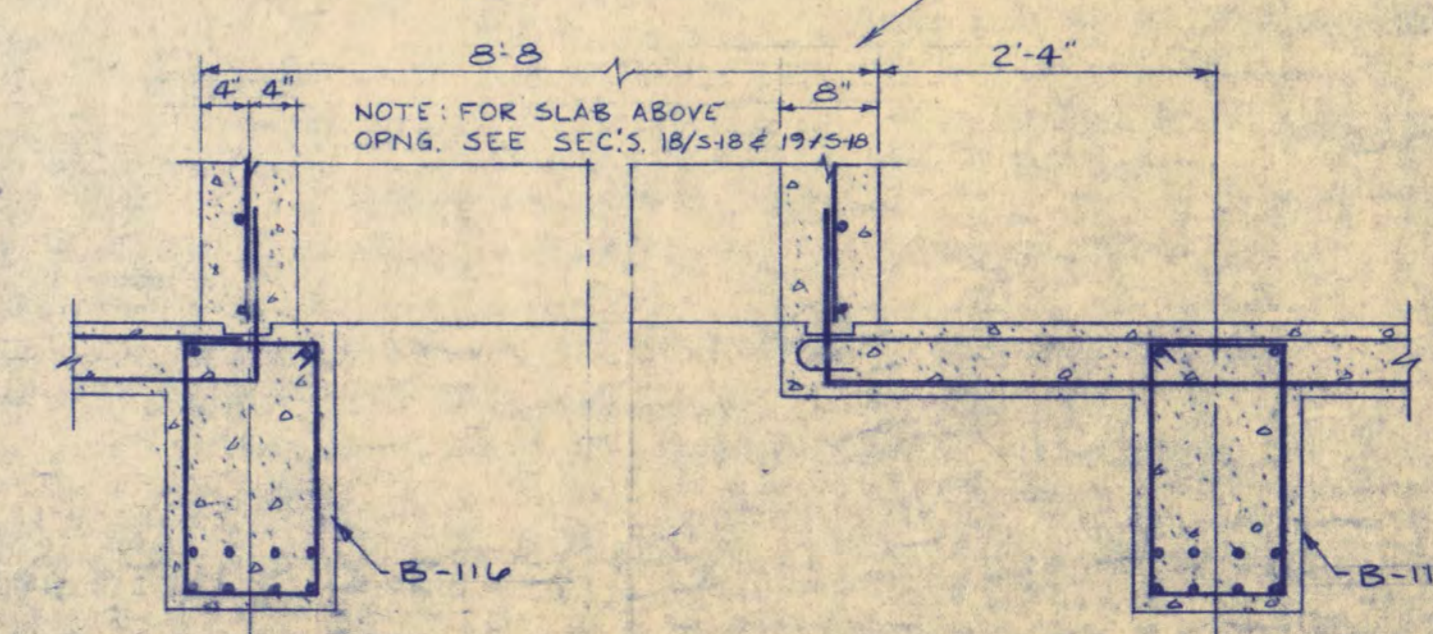
17 SECTION



18 SECTION



19 SECTION



20 SECTION

REV. DATE 5-16-66

WALTER BUTLER COMPANY
HAARSTIG LUNDGREN AND ASSOCIATES INC.
 ARCHITECTS ST. PAUL, MINN. ENGINEERS ST. PAUL, MINN.

FINE ARTS BUILDING
 ST. CLOUD STATE COLLEGE
 ST. CLOUD, MINNESOTA

DEPARTMENT OF ADMINISTRATION - STATE OF MINNESOTA
 A. J. NELSON STATE ARCHITECT

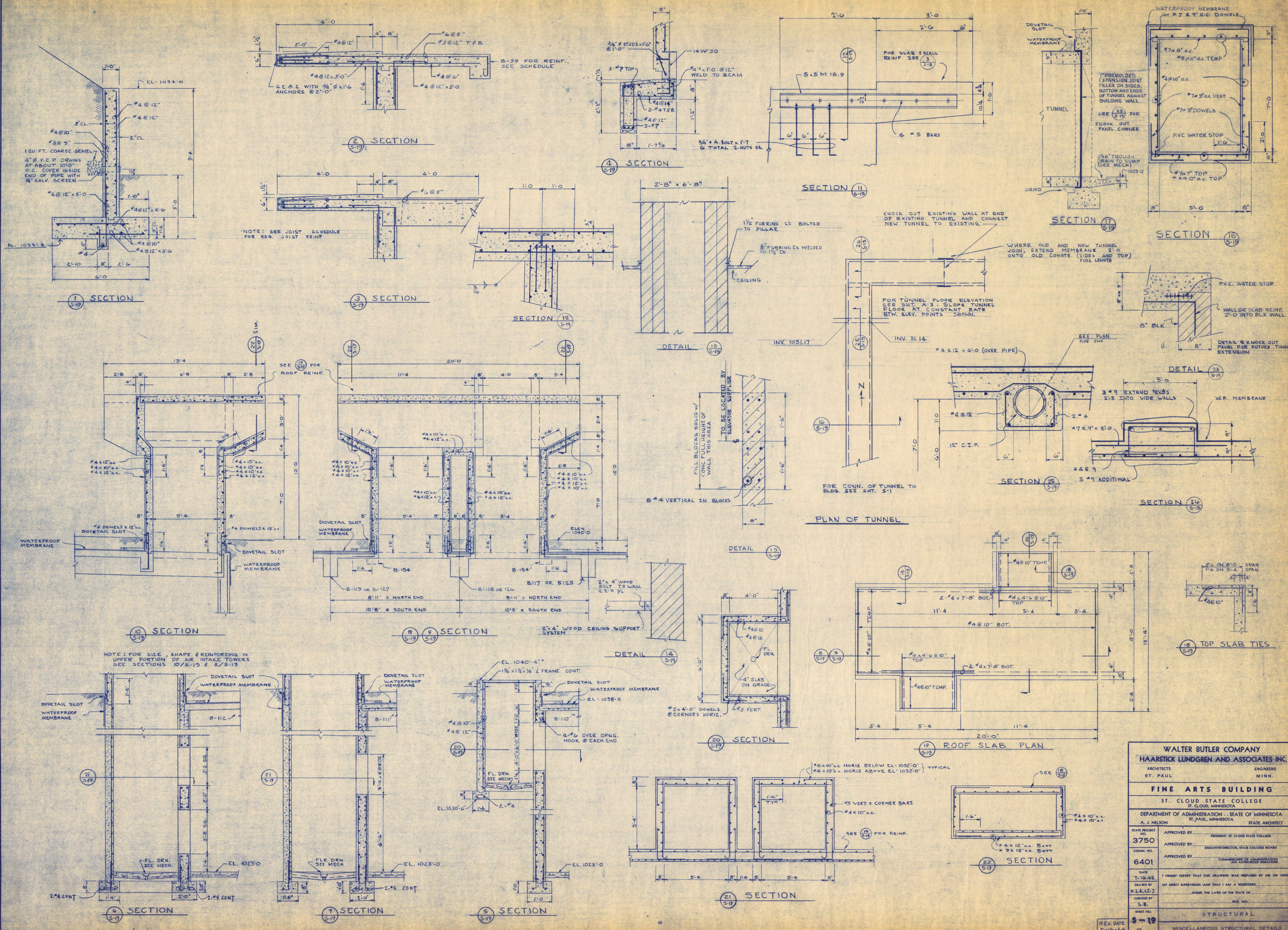
STATE PROJECT NO. 3750
 COMAD NO. 6401

APPROVED BY: PRESIDENT, ST. CLOUD STATE COLLEGE
 APPROVED BY: EXECUTIVE DIRECTOR, STATE COLLEGE BOARD
 APPROVED BY: COMMISSIONER OF ADMINISTRATION, STATE OF MINNESOTA

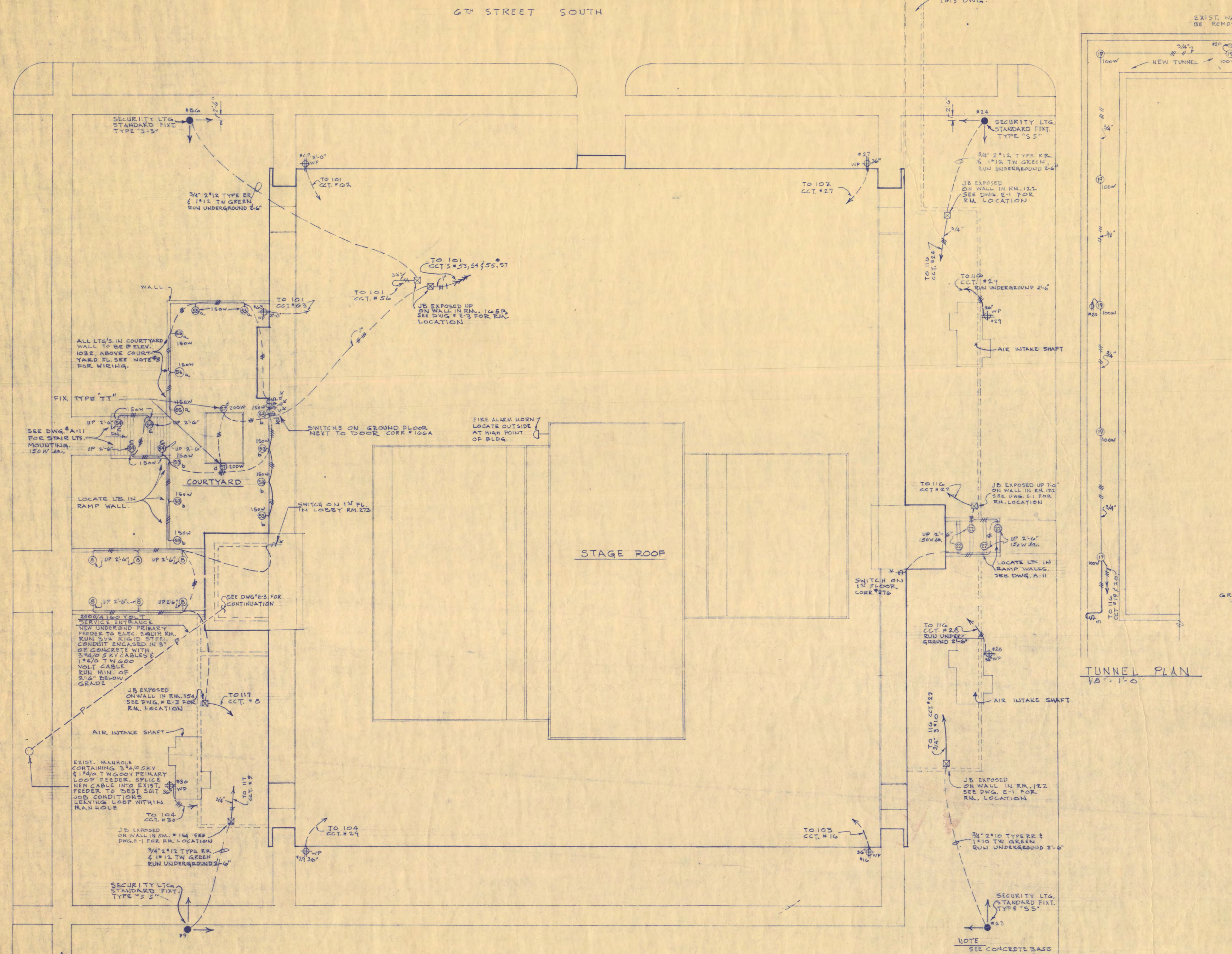
DATE 7-16-65
 DRAWN BY J.J.
 CHECKED BY S.B.

I HEREBY CERTIFY THAT THIS DRAWING WAS PREPARED BY ME OR UNDER MY DIRECT SUPERVISION AND THAT I AM A REGISTERED ENGINEER UNDER THE LAWS OF THE STATE OF MINNESOTA.

SHEET NO. 5-18
 STRUCUTURAL
 MAIN ENTRANCE DETAILS



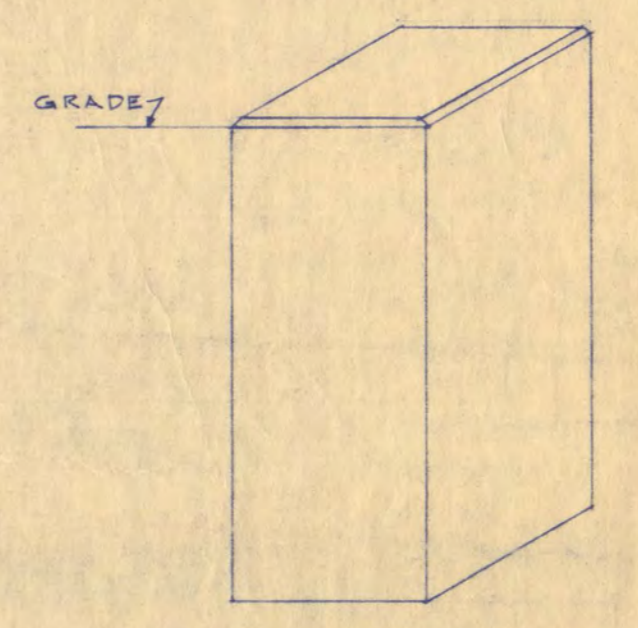
WALTER BUTLER COMPANY		
HAARSTICK LUNDGREN AND ASSOCIATES INC.		
ARCHITECTS	ENGINEERS	
ST. PAUL	MINN.	
FINE ARTS BUILDING		
ST. CLOUD STATE COLLEGE		
ST. CLOUD, MINNESOTA		
DEPARTMENT OF ADMINISTRATION - STATE OF MINNESOTA		
A. J. NELSON STATE ARCHITECT		
STATE PROJECT NO.	APPROVED BY	
3750	PRESIDENT, ST. CLOUD STATE COLLEGE	
CONTRACT NO.	APPROVED BY	
6401	EXECUTIVE DIRECTOR, STATE COLLEGE BOARD	
DATE	APPROVED BY	
7-16-65	COMMISSIONER OF ADMINISTRATION	
DRAWN BY	I HEREBY CERTIFY THAT THIS DRAWING WAS PREPARED BY ME OR UNDER MY DIRECT SUPERVISION AND THAT I AM A REGISTERED ARCHITECT UNDER THE LAWS OF THE STATE OF MINNESOTA.	
K.L.L.S.J.	REG. NO.	
CHECKED BY	SHEET NO.	
S.B.	19	
REV. DATE	5-16-66	
19	STRUCTURAL	
19	MISCELLANEOUS STRUCTURAL DETAILS	



PLOT PLAN 1/16" = 1'-0"

- NOTES:
1. ALL OUTSIDE RECESSED WALL LIGHTS IN RAMP, COURTYARD, STAIR AND COURTYARD TO BE INSTALLED IN A HORIZONTAL PLANE WITH MOUNTING HEIGHT GIVEN TO BE TO TOP OF UNIT.
 2. ALL 600V. WIRING TO BE TYPE RE, SIZE AS NOTED ON DWG.
 3. ENCASE ALL OUTSIDE LIGHTING CONDUIT IN 3" OF CONCRETE, MIN. 2'-6" BELOW GRADE.
 4. ALL WIRING OUTSIDE OF BUILDING TO BE TYPE "R" RUN IN CONDUIT. IN ADDITION TO CIRCUIT WIRES RUN IN 1/2" TW. GREEN BROWN WIRE, CONNECT TO LT. STANDARDS & ALL OUTSIDE LT. FIXTS. AND RECEPTACLES.

TUNNEL PLAN 1/4" = 1'-0"



LIGHT STANDARD BASE FOR FIXTURE TYPE "SS" & "TT"

NO SCALE
 ROUND BASES MAY BE USED IF CONTRACTOR DESIRES.
 AT ALL TYPES "SS" & "TT" LIGHT STANDARDS INSTALL 3/4" X 2'-0" DRIVEN GRD. ROD CONNECT TO STANDARD BASE, USE 6 GA. GREEN TYPE TW. LEAD DATE TO ROD, RUN IN CONDUIT.

ALL BASES 2'-0" SQ. X 2'-0" DEEP TO THE 3000 CONCRETE & IS TO EXISTING LARGER GRADE // SLOPING TOP.

ANCHOR BOLTS, CONCRETE BASE, ETC. FOR STANDARDS FURNISHED & INSTALLED BY Elec. CONTR.

REINFORCING STEEL #4 TIES @ 24" O.C. 2" CLEAR TO THE TIES 2" X 7" VERTICAL.

SCHEDULE OF ELECTRICAL SYMBOLS

SYMBOL	DESCRIPTION	MANUFACTURER'S NAME & CATALOG NO. (IF APPROVED EQUAL)	SIZE (IF INDICATED)
—	CONDUIT FOR PRIMARY VOLTAGE FEEDERS	SEE SPEC.	
—	CONDUIT RUN IN WALLS OR CEILING	SEE SPEC.	
—	CONDUIT RUN IN FLOOR OR BELOW FLOOR	SEE SPEC.	
—	CONDUIT FOR TELEPHONE SYSTEM	SEE SPEC.	
—	CONDUIT FOR AUDIO VISUAL SYSTEM	SEE SPEC.	
—	CONDUIT FOR FIRE ALARM SYSTEM	SEE SPEC.	
—	ARROWHEADS INDICATE NO. OF CIRCUITS IN RUN		
—	CROSSMARKS INDICATES NOT TO BE WIRING (AND NOT TO BE)		
⊙	INCANDESCENT LIGHTING OUTLET	SEE SPEC.	ON CLG.
⊙	INCANDESCENT LIGHTING OUTLET (WALL MTS.)	SEE SPEC.	ON CLG.
⊙	INCANDESCENT LIGHTING OUTLET ON EMERGENCY CIRCUIT	SEE SPEC.	ON CLG.
⊙	EXIT LIGHT (WALL MTS.)	SEE SPEC.	ON CLG.
⊙	EXIT LIGHT (WALL MTS.)	SEE SPEC.	ON CLG.
⊙	FLUORESCENT FIXTURE LIGHTING OUTLET ON CLG.	SEE SPEC.	ON CLG.
⊙	FLUORESCENT FIXTURE LIGHTING OUTLET ON WALL	SEE SPEC.	ON CLG.
⊙	SINGLE RECEPTAL W/W COVER / CAST BOX	HUBBELL #1202	4'-0"
⊙	30A 3P 120V TWIST-LOCK RECEPTACLE	HUBBELL #1202	4'-0"
⊙	SINGLE RECEPTAL	HUBBELL #1202	4'-0"
⊙	DUPLEX RECEPTAL	HUBBELL #1202	4'-0"
⊙	CLOCK	SEE SPEC.	7'-0"
⊙	CLOCK OUTLET ONLY	SEE SPEC.	7'-0"
⊙	SWITCH 2 POLE	HUBBELL #1202	4'-0"
⊙	SWITCH SINGLE POLE	HUBBELL #1202	4'-0"
⊙	SWITCH 3 WAY	HUBBELL #1202	4'-0"
⊙	SWITCH 4 WAY	HUBBELL #1202	4'-0"
⊙	COMBINATION SWITCH & RECEPTAL	SEE SPEC.	4'-0"
⊙	THERMAL OVERLOAD SWITCH (KEY OPERATED)	SQUARE 'D' CO.	5'-0"
⊙	KEY OPERATED SWITCH	HUBBELL #1012	4'-0"
⊙	MOMENTARY CONTACT SWITCH	HUBBELL #1012	4'-0"
⊙	JUNCTION OR PULL BOX	SEE SPEC.	
⊙	BUSSED SAFETY SWITCH	SEE SPEC.	
⊙	STARTER	BY OTHERS	TOP 6'-0"
⊙	MOTOR (NO INDICATES HP) (NO INDICATES MOTOR)	BY OTHERS	TOP 6'-0"
⊙	TRANSFORMER	SEE SPEC.	TOP 6'-0"
⊙	RELAY	BY OTHERS	TOP 6'-0"
⊙	ALTERNATOR	BY OTHERS	TOP 6'-0"
⊙	ELECTRIC CABINET EMERGENCY SYSTEM	SEE SPEC.	TOP 6'-0"
⊙	ELECTRIC CABINET 120/240V 3P	SEE SPEC.	TOP 6'-0"
⊙	ELECTRIC CABINET 277/480V 3P	SEE SPEC.	TOP 6'-0"
⊙	M.T. DENOTES EMPTY CONDUIT		
⊙	BY ANY SYMBOL DENOTES WEATHER OR WATERPROOF		
⊙	BY ANY SYMBOL DENOTES EXPLOSION PROOF		
⊙	ELECTRIC THERMOSTAT	SEE SPEC.	5'-0"
⊙	LIGHT DIMMER	SEE DWG'S	4'-0"
⊙	FIRE ALARM SYSTEM BORN	SEE SPEC.	7'-6"
⊙	FIRE ALARM SYSTEM BREAKGLASS STATION	SEE SPEC.	4'-6"
⊙	FIRE ALARM SYSTEM AUTOMATIC DETECTION STA.	SEE SPEC.	ON CLG.
⊙	FIRE ALARM PANEL	SEE SPEC.	TOP 4'-0"
⊙	FIRE ALARM RESISTOR END OF LINE RESISTOR	SEE SPEC.	5'-6"
⊙	TELEPHONE TERMINAL CABINET	SEE SPEC.	TOP 6'-0"
⊙	TELEPHONE OUTLET	SEE SPEC.	1'-0"
⊙	AUDIO-VISUAL OUTLET	SEE SPEC.	1'-0"
⊙	TELEVISION ANTENNA OUTLET	SEE SPEC.	1'-0"
⊙	CEILING MOUNTED SPEAKER JUNCTION BOX	SEE SPEC.	8'-0"
⊙	WALL MOUNTED JUNCTION BOX	SEE SPEC.	8'-0"
⊙	AMPLIFIER INPUT JACK TO SPEAKERS JUNCTION	SEE SPEC.	2'-0"
⊙	SPEAKER VOLUME CONTROL SWITCH	SEE SPEC.	5'-0"
⊙	MIKE INPUT JACK	SEE SPEC.	1'-0"
⊙	AUDITING SYSTEM SPEAKER	SEE SPEC.	
⊙	INTERCOM SPEAKER OR HEAR SET JACK	SEE SPEC.	
⊙	DOOR BELL PUSH BUTTON (LOW VOLTAGE)	SEE SPEC.	5'-0"
⊙	DOOR BELL (LOW VOLTAGE)	SEE SPEC.	7'-6"
⊙	DRESSING TABLE LIGHTS & RECEPTACLES	SEE DETAILS	
⊙	MOMENTARY CONTACT ONE POSITION (ON) PANE SW.	SEE DWG'S FOR DETAILS	6'-0"

WALTER BUTLER COMPANY
 HAARSTICK LUNDGREN AND ASSOCIATES INC.
 ARCHITECTS ST. PAUL ENGINEERS MINN.

FINE ARTS BUILDING
 ST. CLOUD STATE COLLEGE
 ST. CLOUD, MINNESOTA

DEPARTMENT OF ADMINISTRATION - STATE OF MINNESOTA
 A. J. NELSON STATE ARCHITECT

STATE PROJECT NO. 3750
 COMM. NO. 6401
 APPROVED BY: PRESIDENT, ST. CLOUD STATE COLLEGE
 APPROVED BY: EXECUTIVE DIRECTOR, STATE COLLEGE BOARD
 APPROVED BY: COMMISSIONER OF ADMINISTRATION (AN AUTHORIZED SIGNATURE)

DATE: JUNE 15, 1966
 DRAWN BY: JFE:JK
 CHECKED BY: REMP:HL
 I HEREBY CERTIFY THAT THIS DRAWING WAS PREPARED BY ME OR UNDER MY DIRECT SUPERVISION AND THAT I AM A REGISTERED UNDER THE LAWS OF THE STATE OF MINN. REG. NO.

FEDERAL GRANT NO. MINN. 4-1884
 REV. DATE: 5-16-66
 SHEET NO. E-1
 OF SHEETS ELECTRICAL
 PLOT PLAN & SCHEDULE OF SYMBOLS