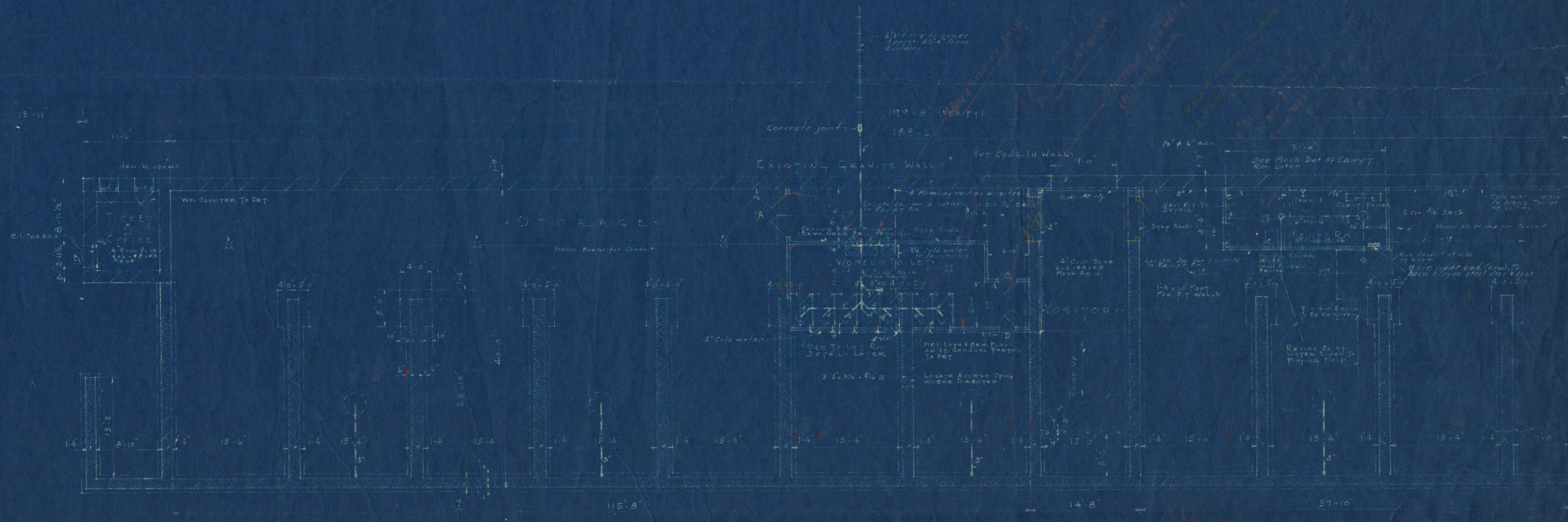


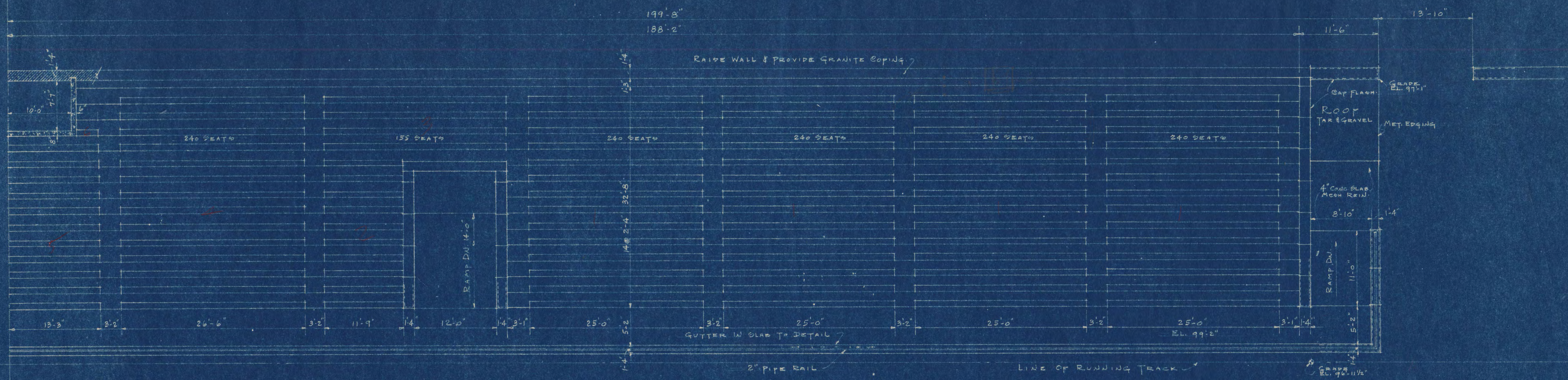
HALF FOUNDATION PLAN
SCALE 1/8" = 1'-0"



HALF FOUNDATION PLAN
SCALE 1/8" = 1'-0"

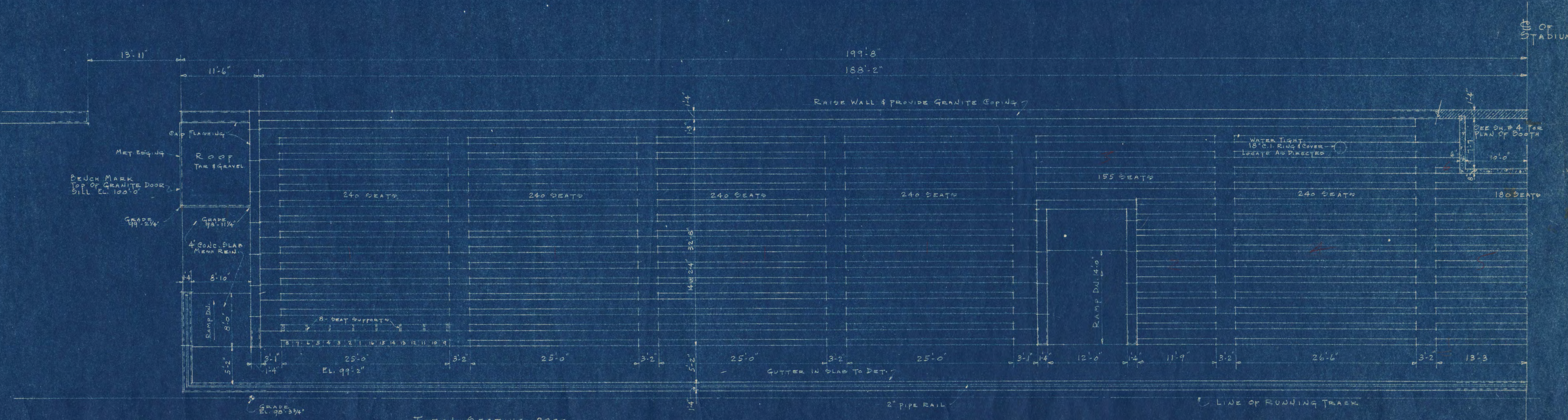
STADIUM
FOR
STATE TEACHERS COLLEGE
GEORGE A. BELKE, PRESIDENT
FRANK W. JACKSON, ARCHT.
ST. CLOUD, MINNESOTA
JULY 28 1939

036-006-1939-6



PLAN OF STADIUM
SCALE 1/8" = 1'-0"

OF STADIUM

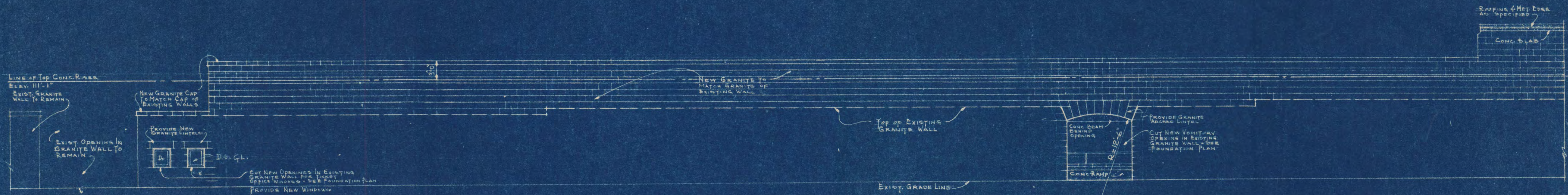


TOTAL SEATING 2890

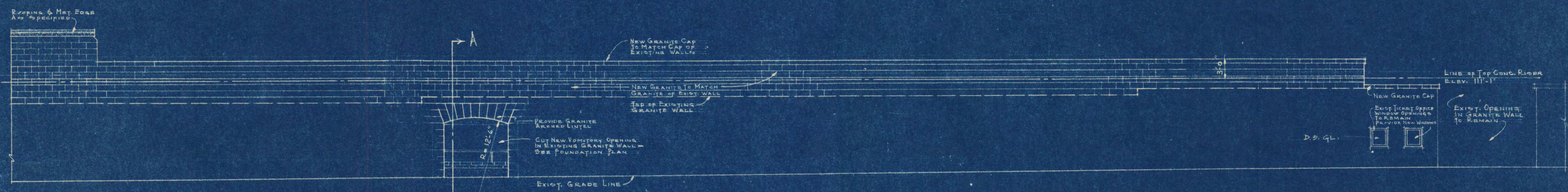
PLAN OF STADIUM
SCALE 1/8" = 1'-0"

OF STADIUM

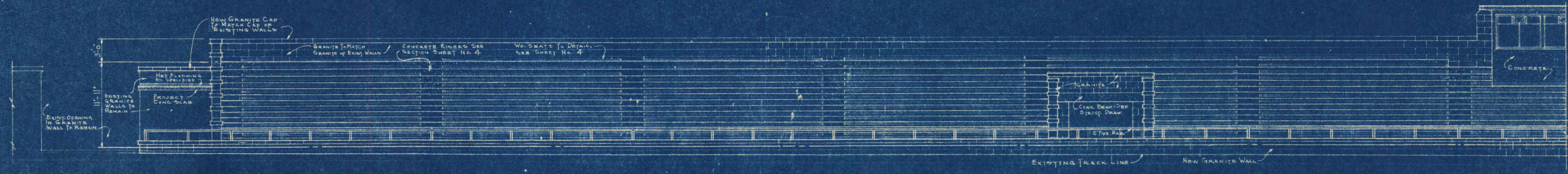
STADIUM		
STATE TEACHERS COLLEGE		
ST. CLOUD, MINN.		
GEORGE A. SELKE, PRESIDENT		
REVISIONS	FRANK W. JACKSON ARCHITECT ST. CLOUD, MINNESOTA	GENL. DRAW. NO.
DRAW. NO. 1-3815	DATE JAN 28 1939	2
VERIFY ALL DIMENSIONS		



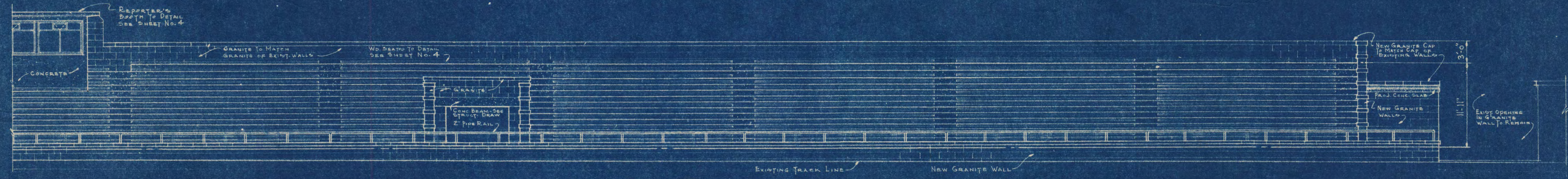
NORTH HALF WEST ELEVATION
SCALE 1/8" = 1'-0"



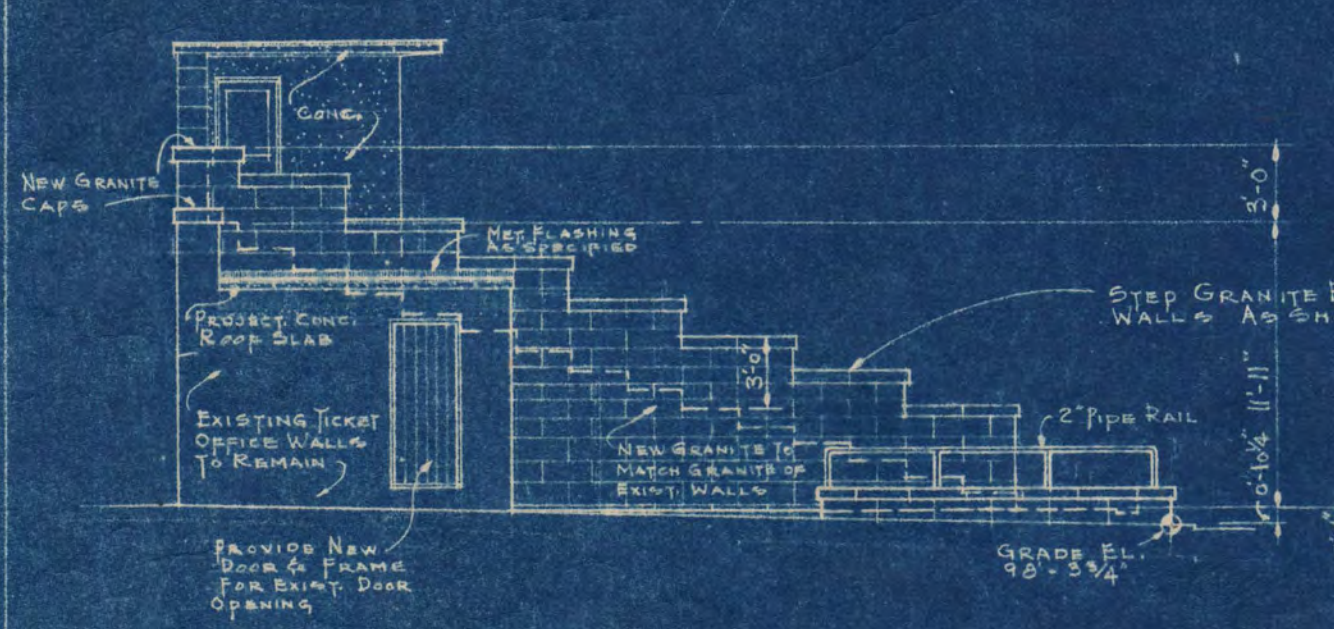
SOUTH HALF WEST ELEVATION
SCALE 1/8" = 1'-0"



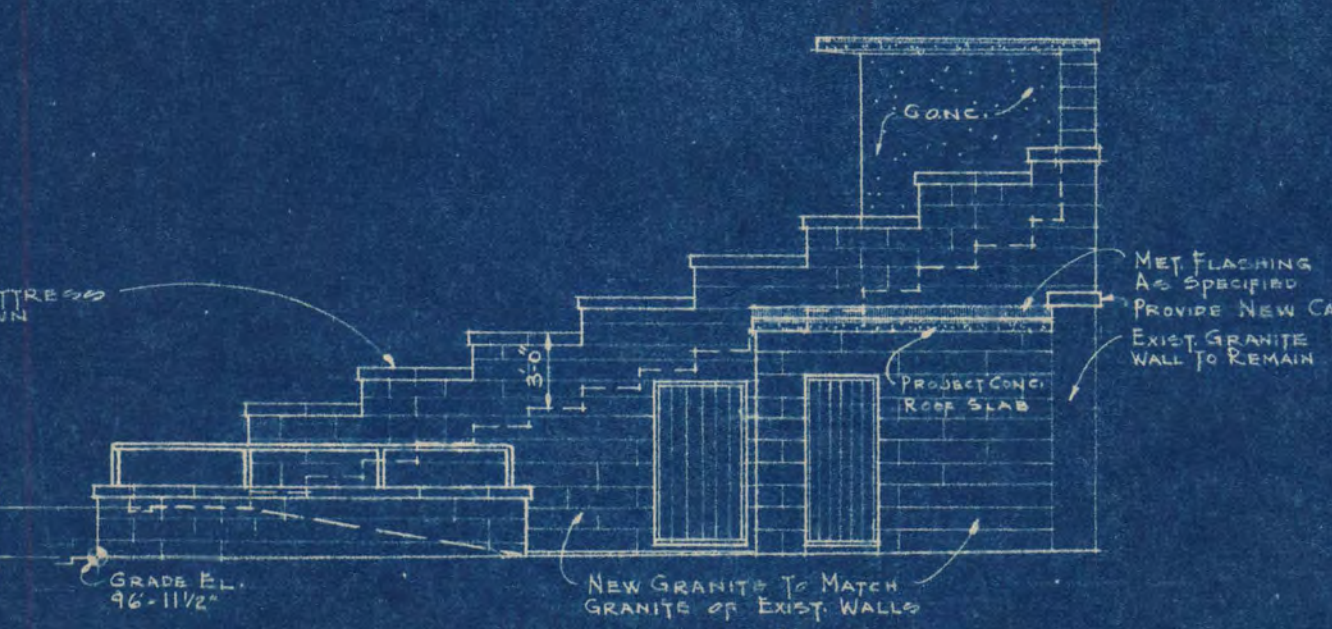
SOUTH HALF EAST ELEVATION
SCALE 1/8" = 1'-0"



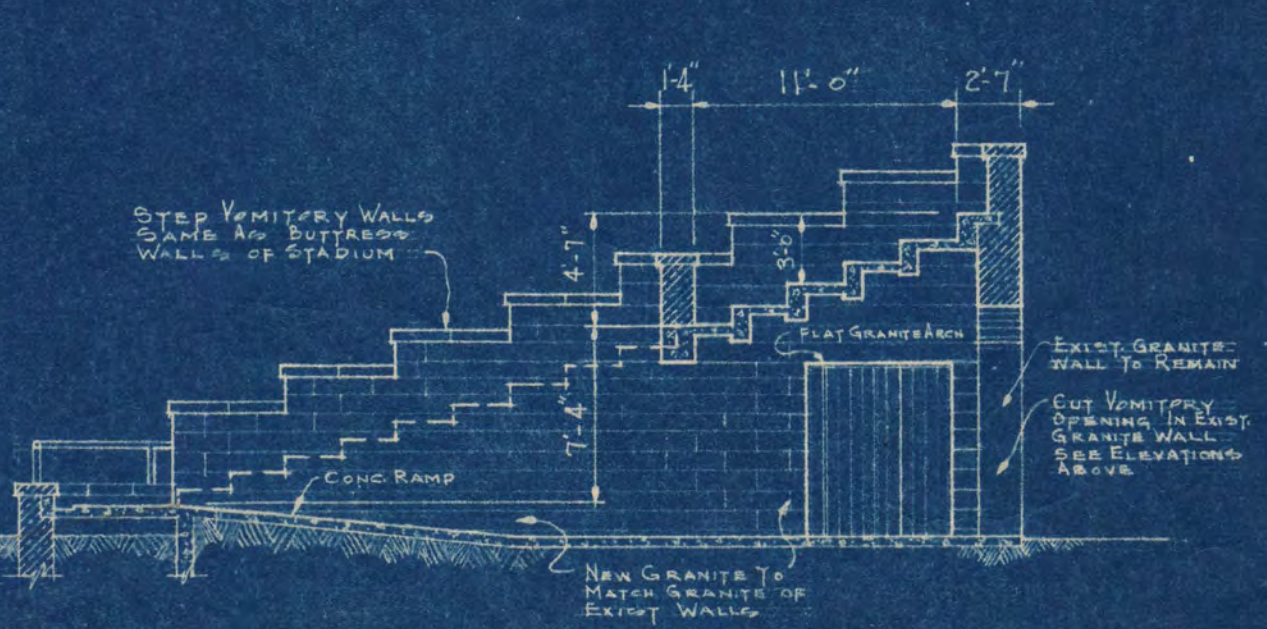
NORTH HALF EAST ELEVATION
SCALE 1/8" = 1'-0"



SOUTH ELEVATION
SCALE 1/8" = 1'-0"

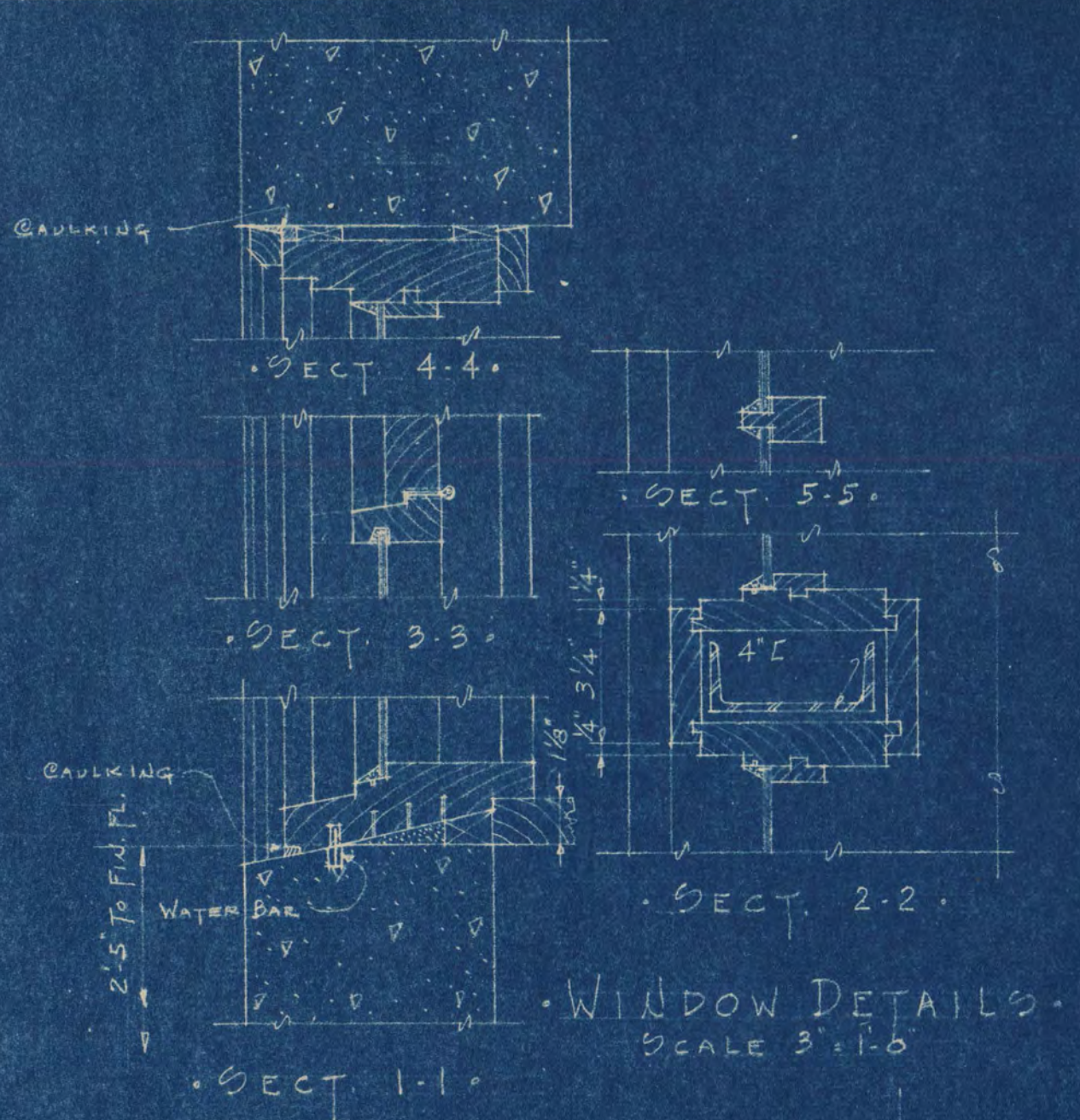


NORTH ELEVATION
SCALE 1/8" = 1'-0"

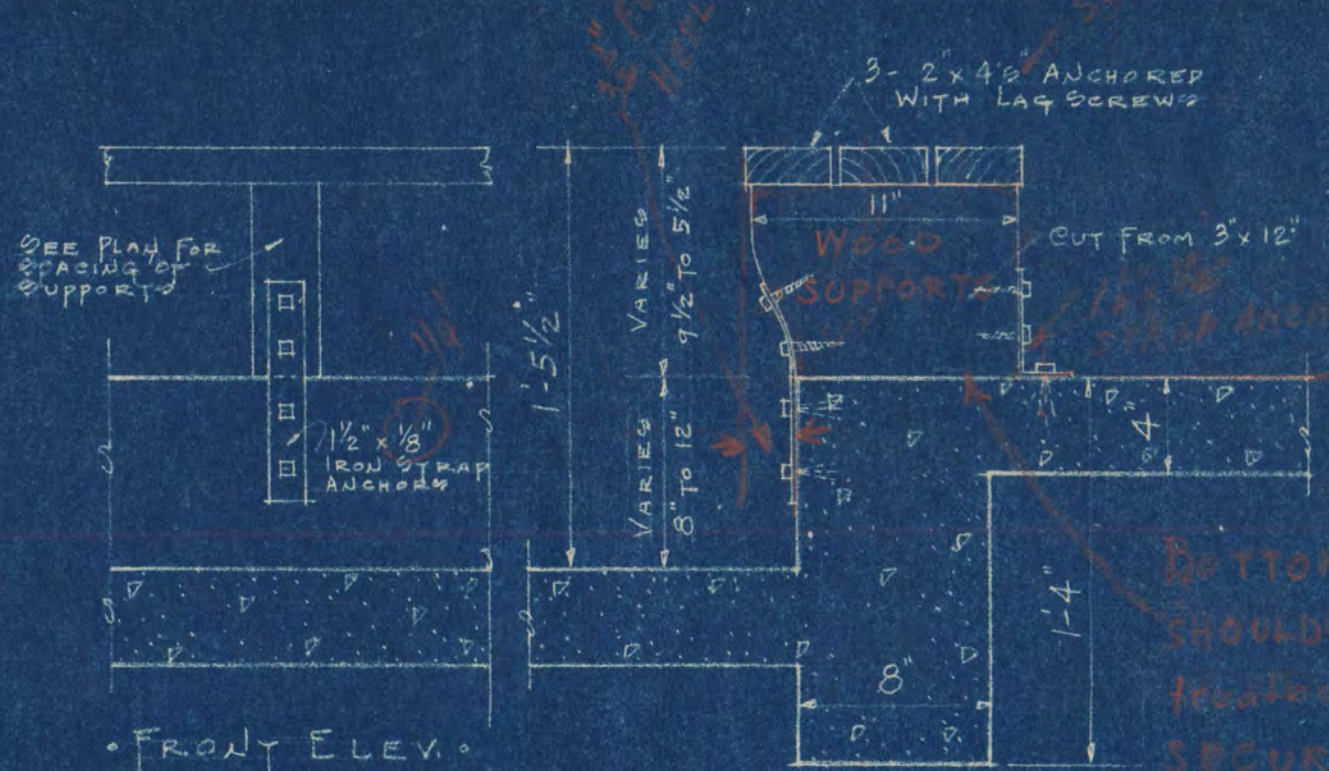


SECTION A-A
SCALE 1/8" = 1'-0"

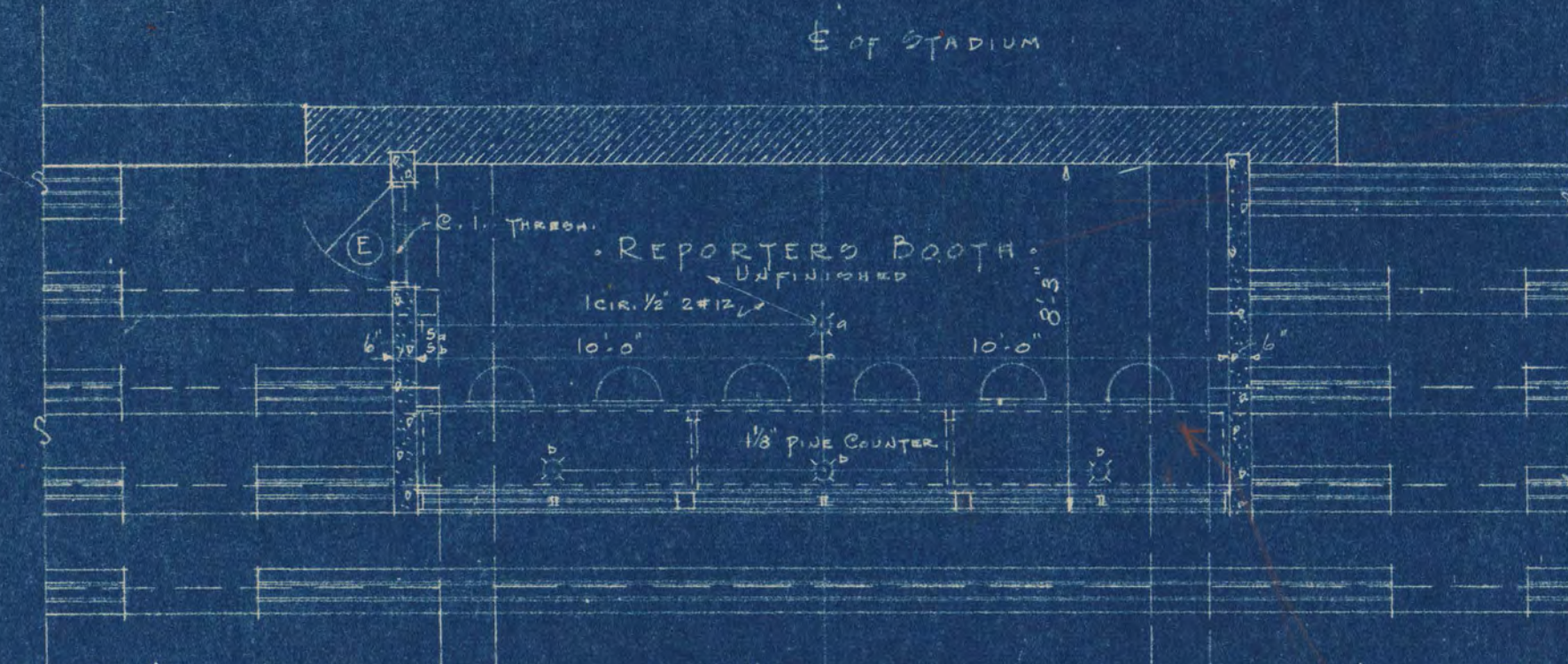
STADIUM FOR STATE TEACHERS COLLEGE ST. CLOUD, MINN.		
GEORGE A. BELKE, PRESIDENT		
REVISIONS	FRANK W. JACKSON ARCHITECT ST. CLOUD, MINNESOTA	GEN'L. DRAW. NO.
CON. NO. 1-3815	DATE JAN. 28, 1939	3
VERIFY ALL DIMENSIONS		



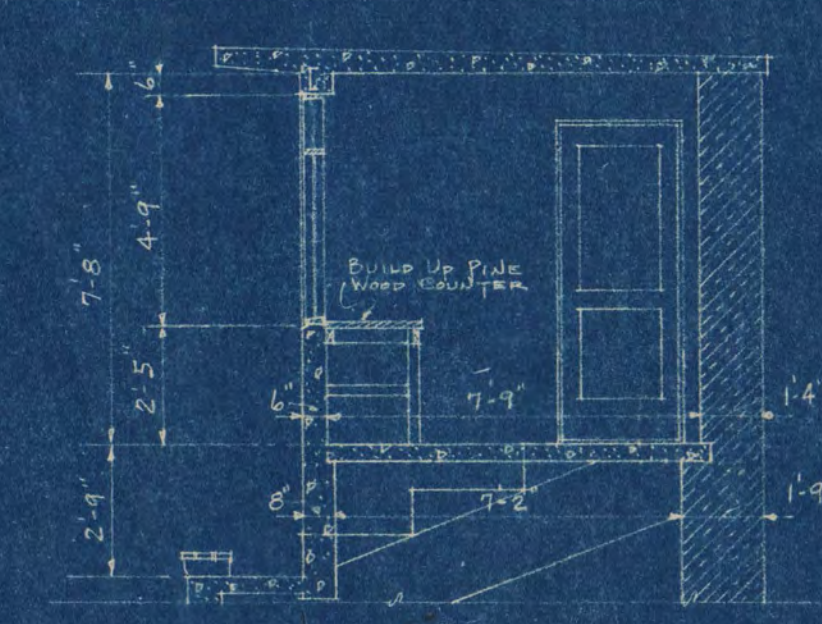
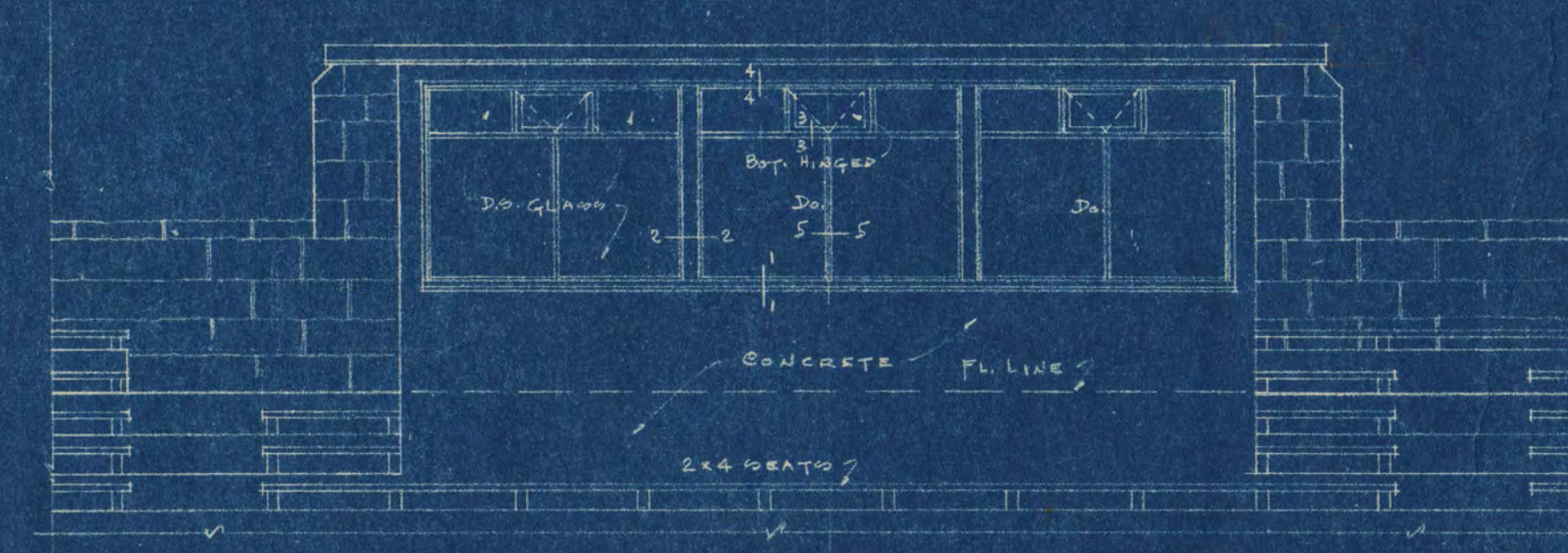
• WINDOW DETAILS.
SCALE 3" = 1'-0"



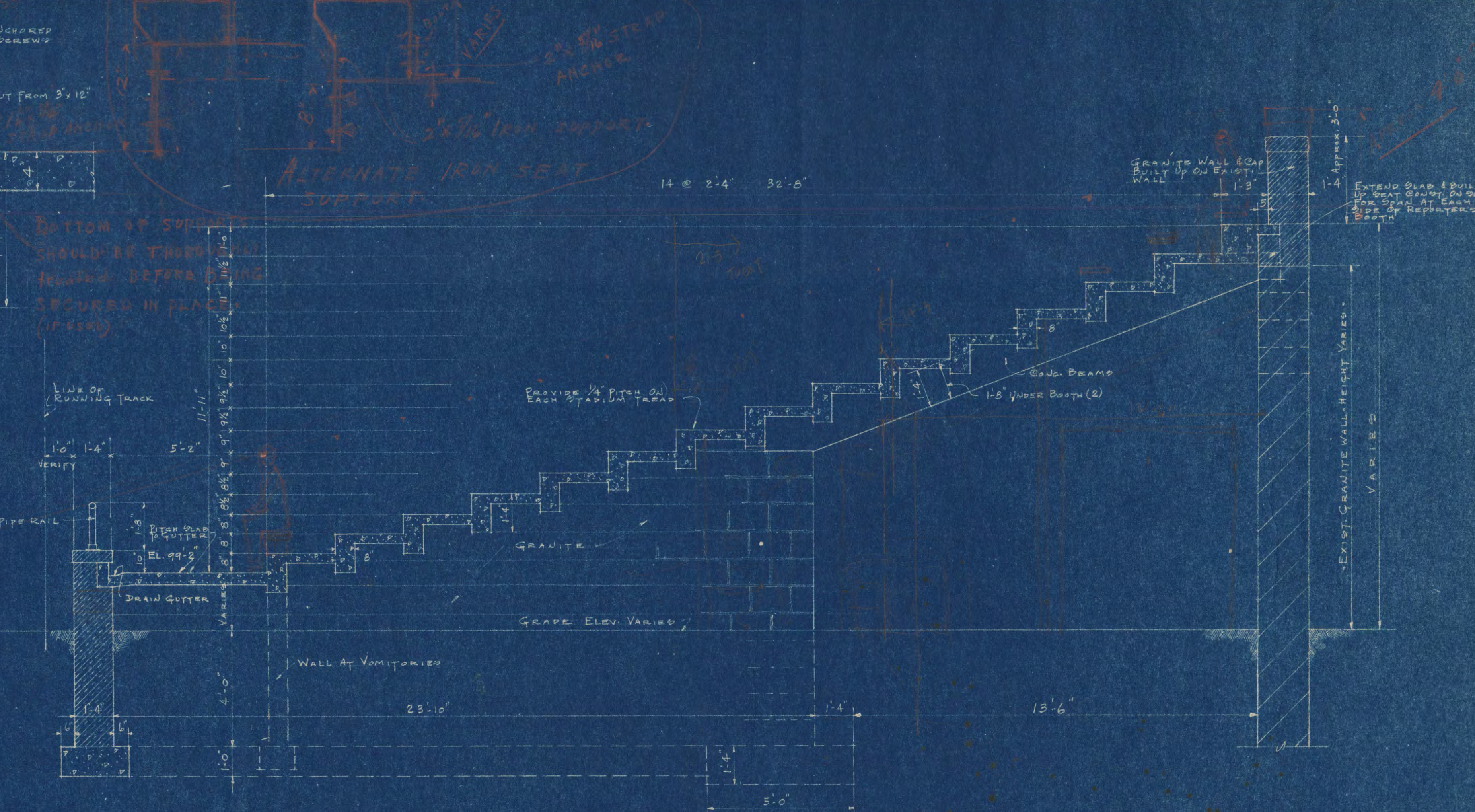
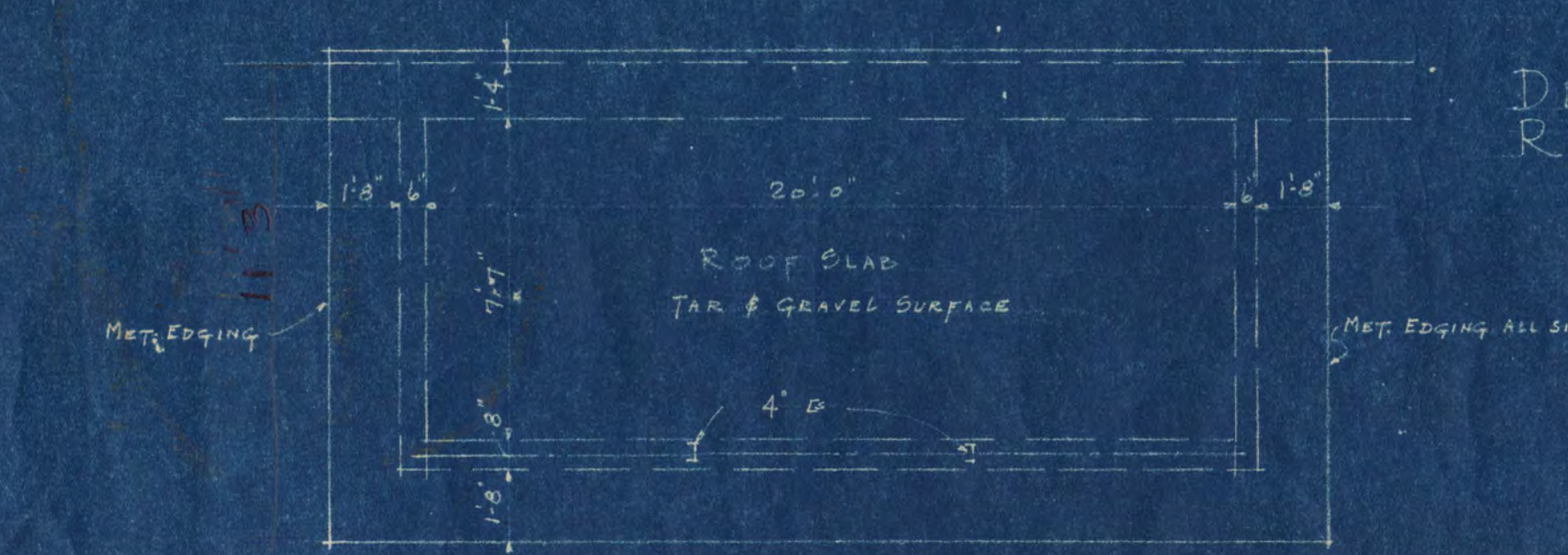
• BOTTOM OF SUPPORT SHOULD BE THREE (3) INCHES BELOW TOP OF SEAT SECURED IN PLACE (IF USED)



• NO PROVISION MADE FOR BROADCASTING OR LOUDSPEAKER

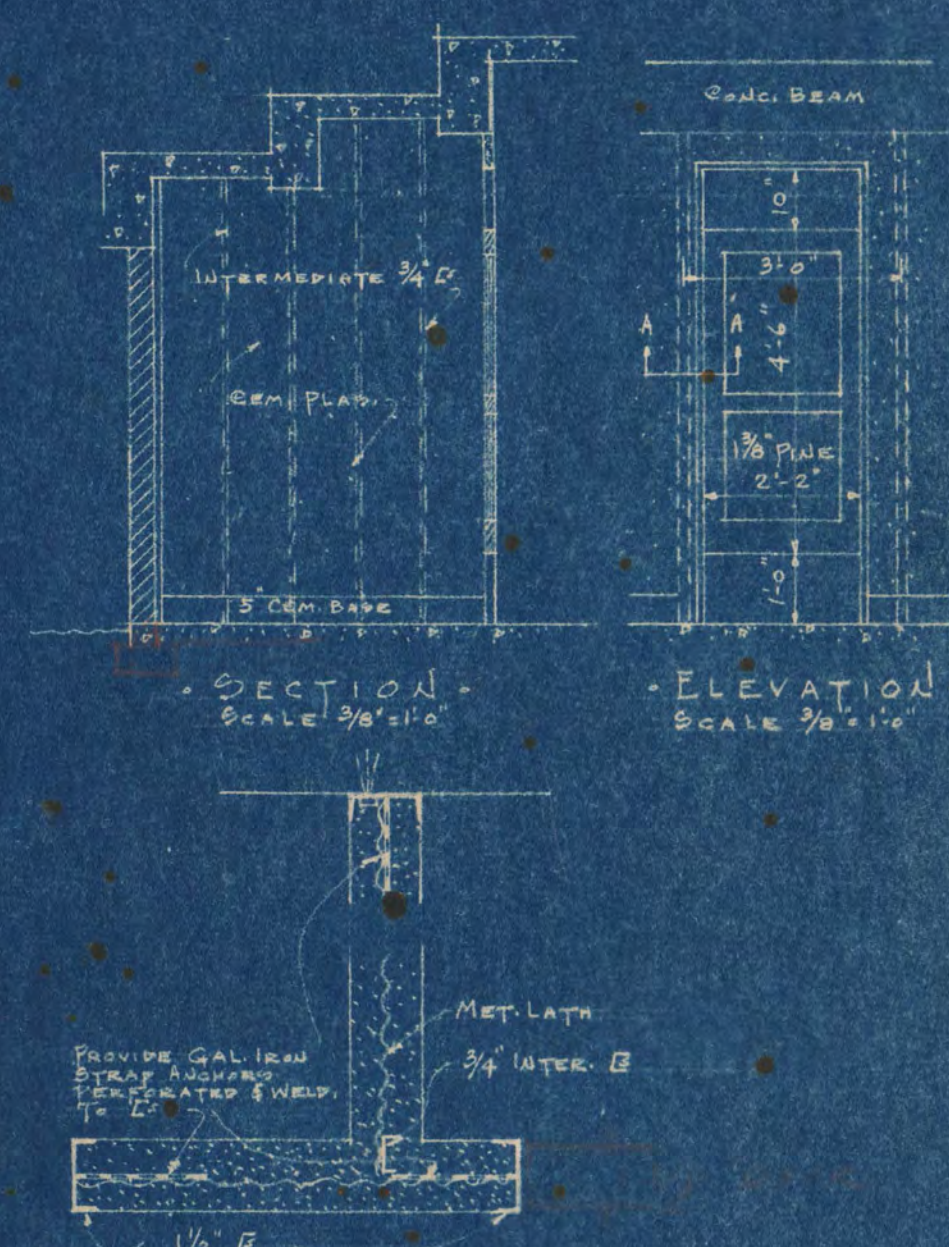
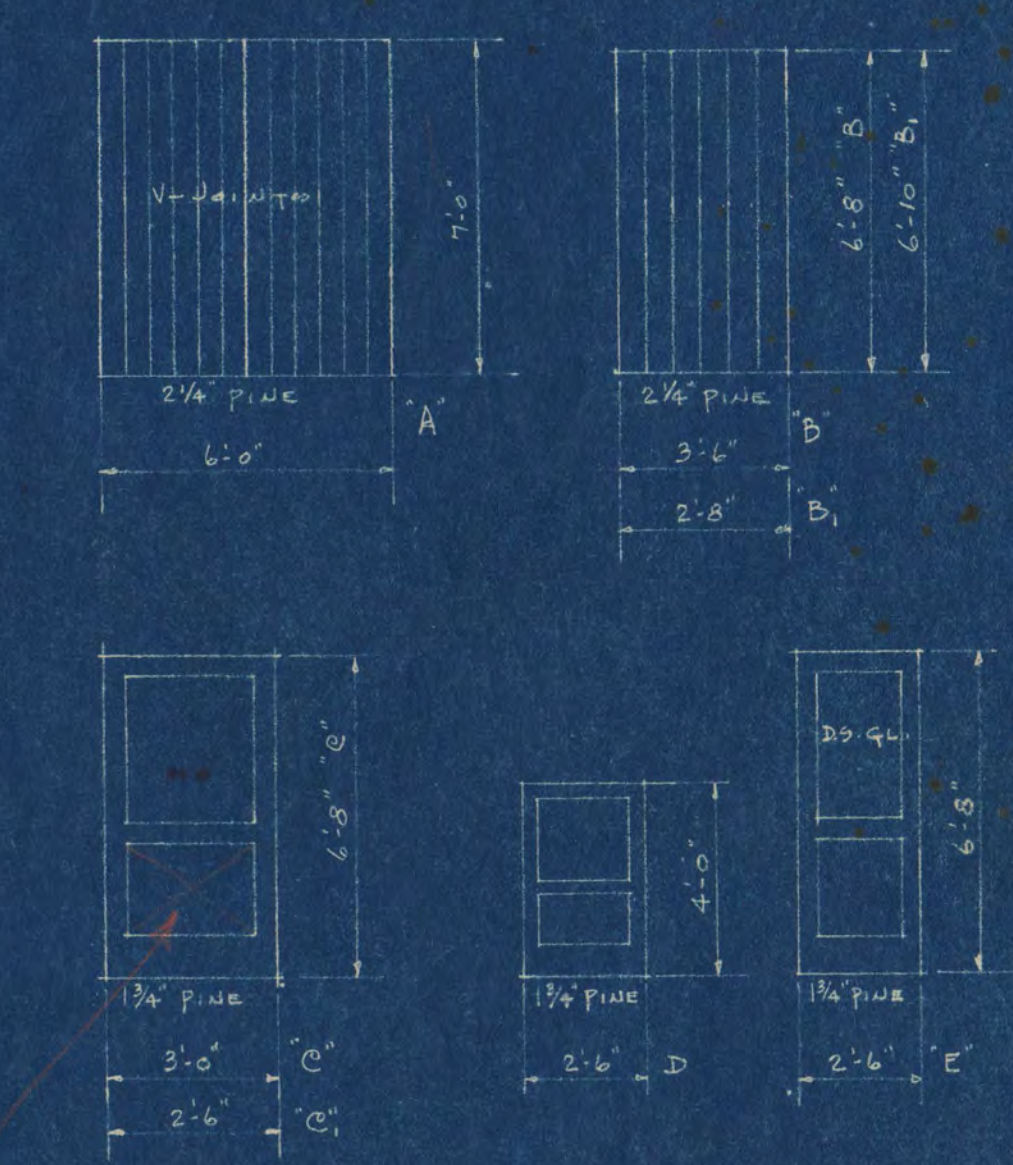
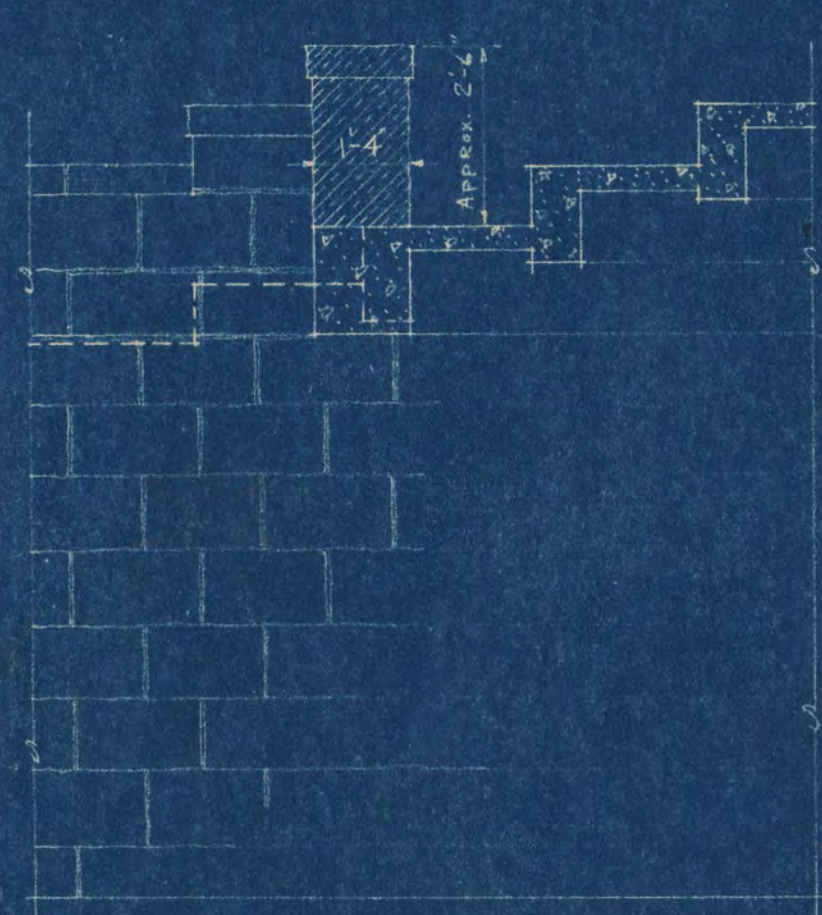


• DETAILS OF REPORTER'S BOOTH
SCALE 1/4" = 1'-0"



• ALTERNATE IRON SEAT SUPPORT

• SECTION THRU STADIUM.
SCALE 3/8" = 1'-0"

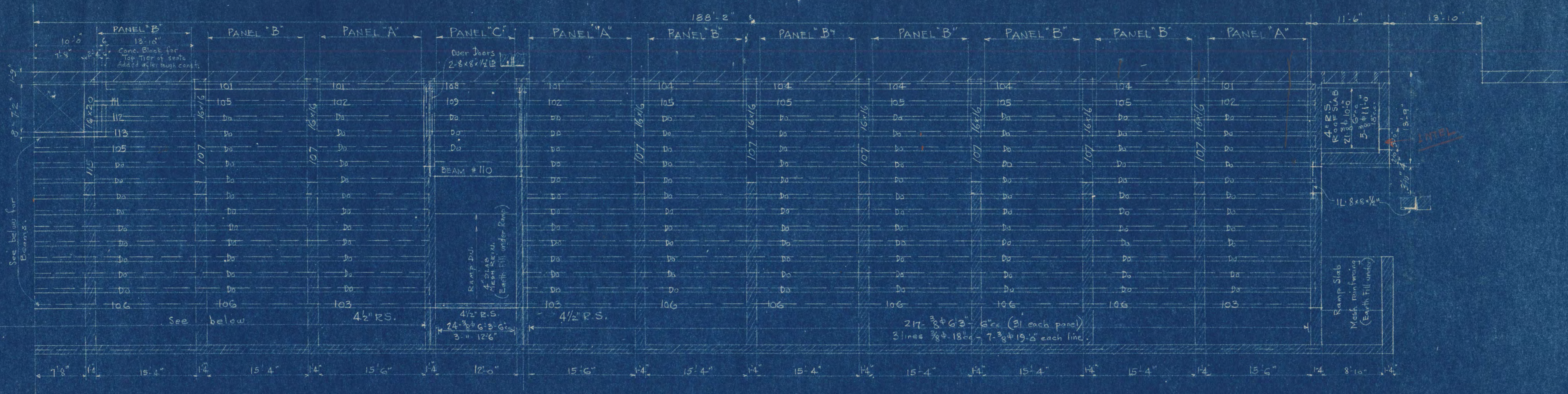


• TOILET ROOM DETAILS.

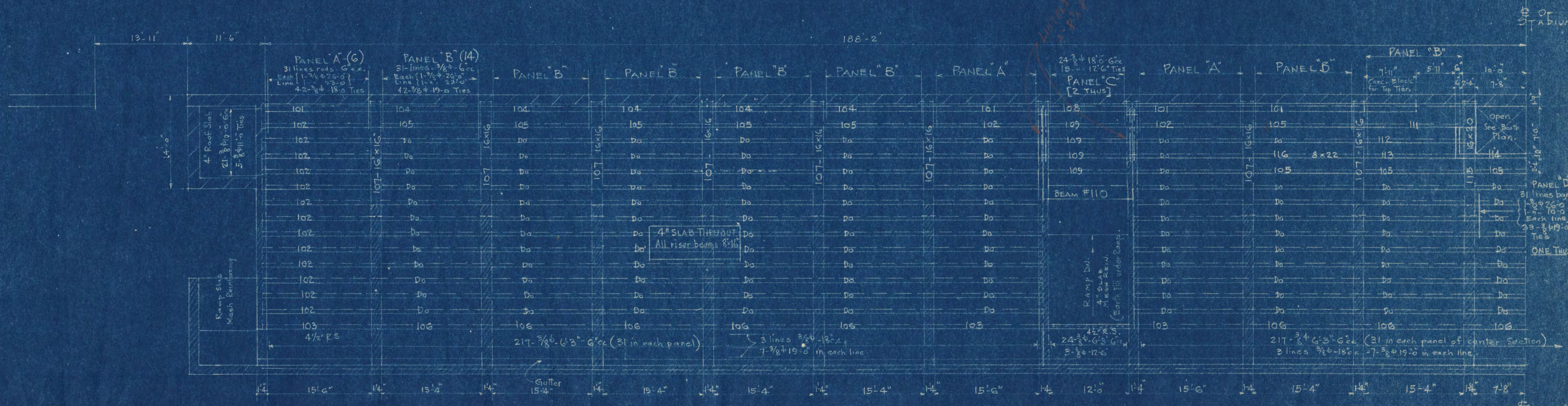
• DETAIL OF EXTERIOR & INTERIOR DOOR FRAMES? (NOT SPECIFIED)
• INSTALL EXTERIOR DOORS CL TO TOILET ROOMS AND VOMITORY AS SHOWN

• STADIUM.
STATE TEACHERS COLLEGE
ST. CLOUD, MINN.
GEORGE A. SELKE, PRESIDENT

REVISIONS	FRANK W. JACKSON ARCHITECT ST. CLOUD, MINNESOTA	GEN'L
DRAW. NO. 1-38/5	DATE JAN. 28 1939	SCALE 1/4" = 1'-0"
VERIFY ALL DIMENSIONS		4



STADIUM FRAMING PLAN
SCALE 1/8"=1'-0"

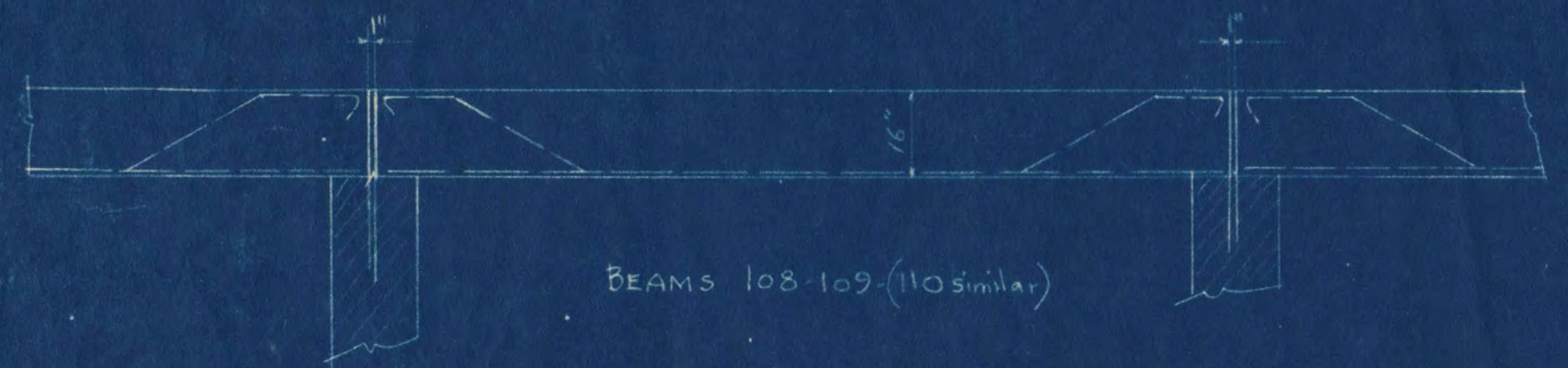
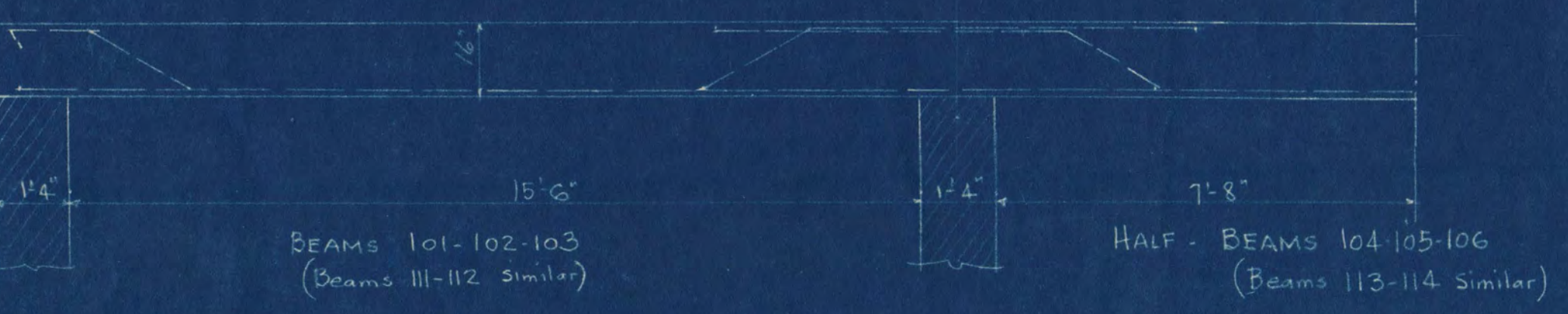
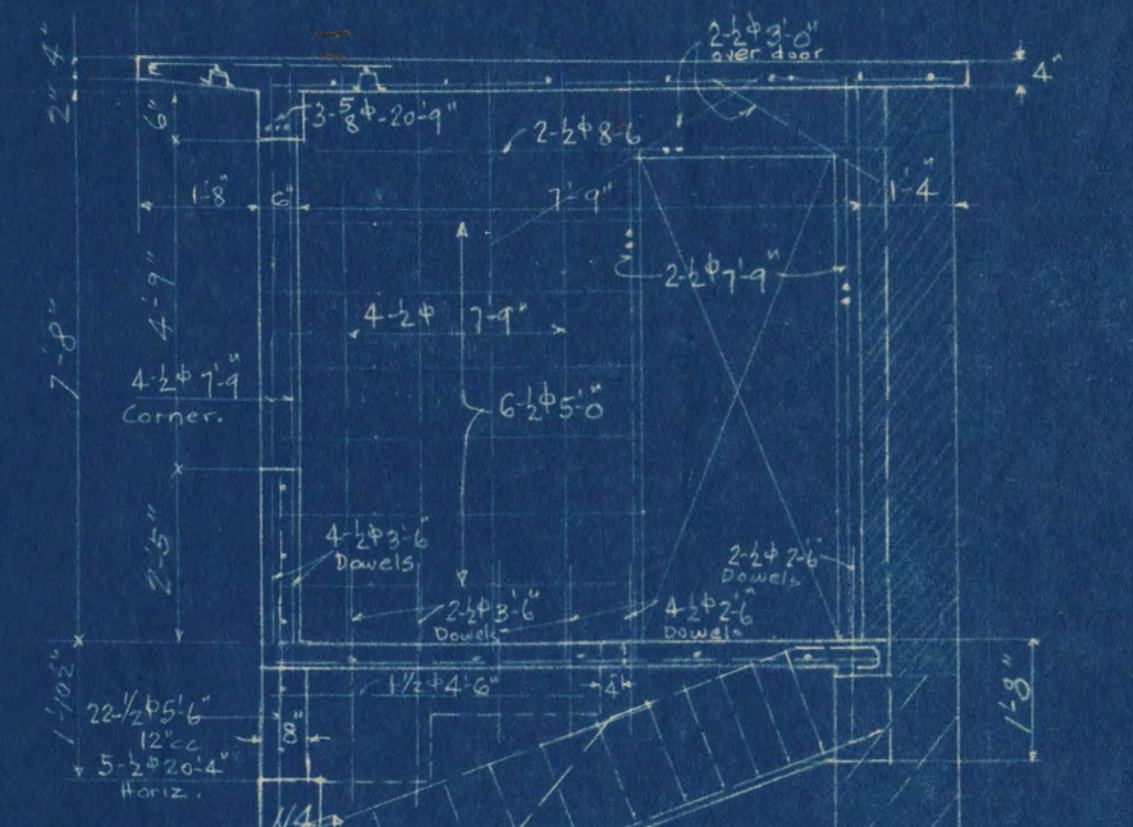
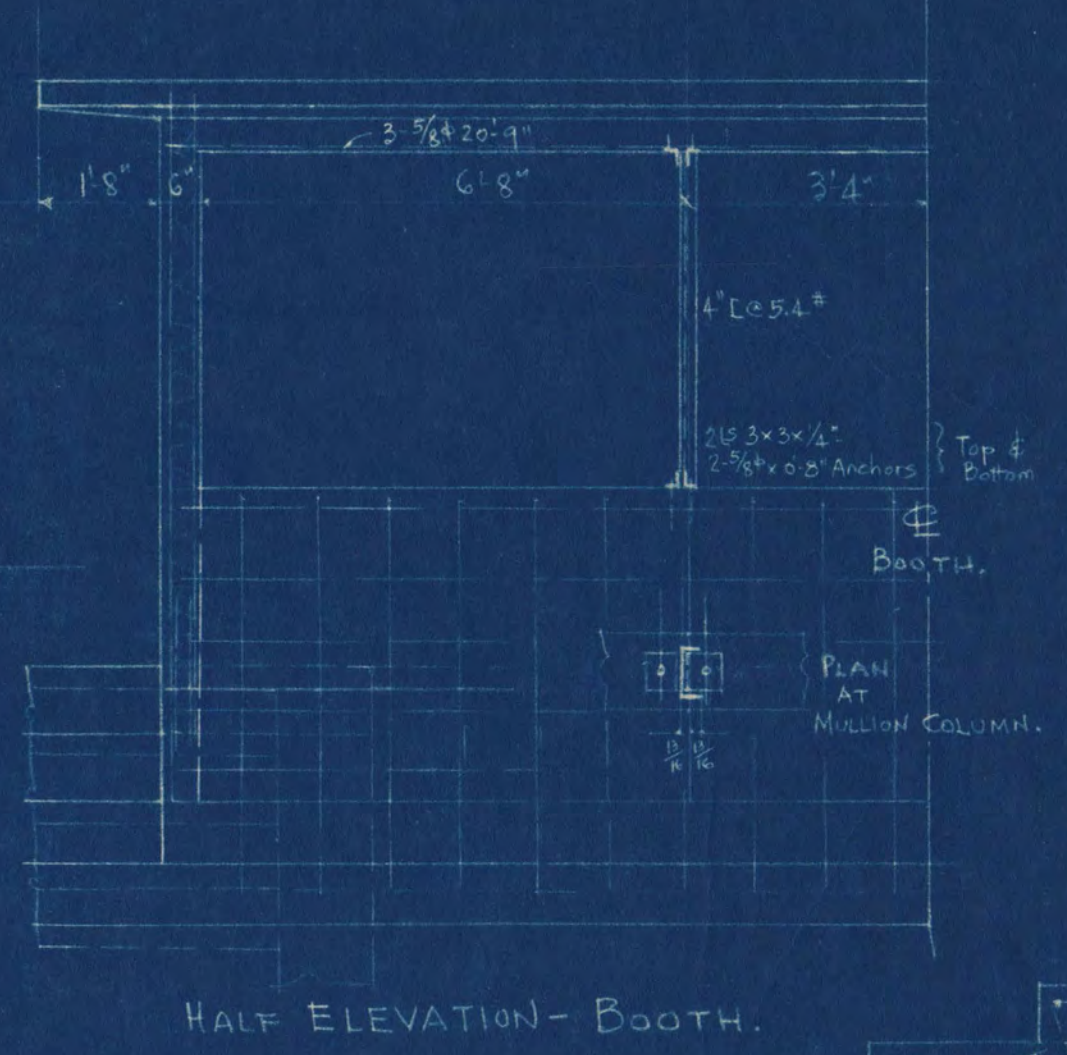
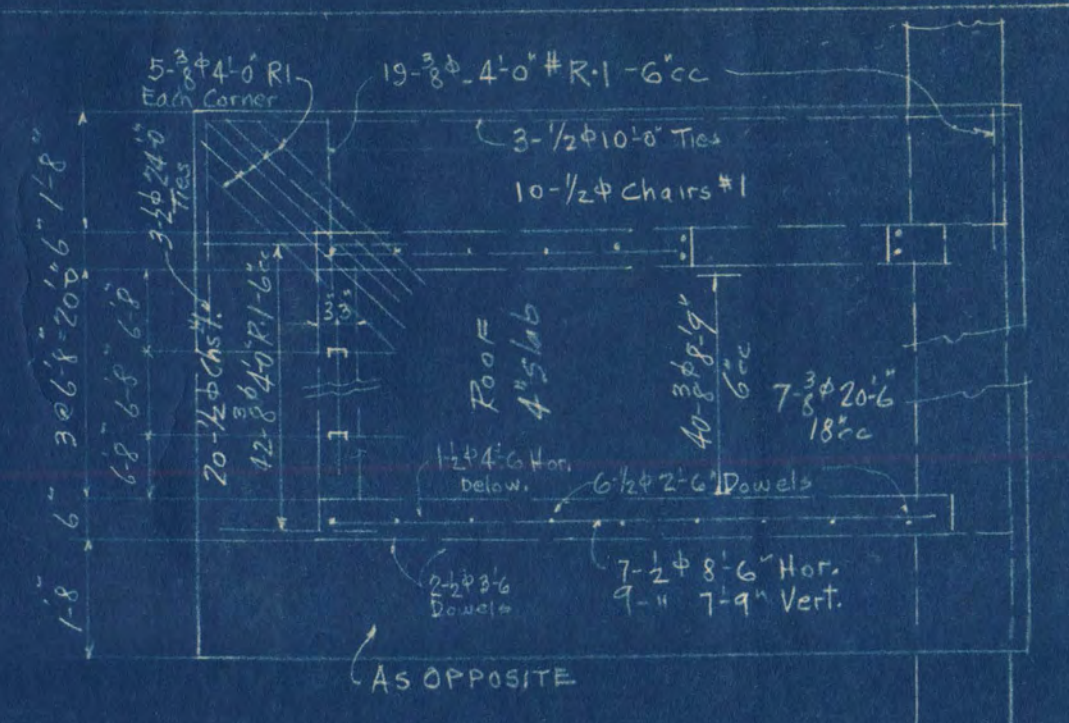
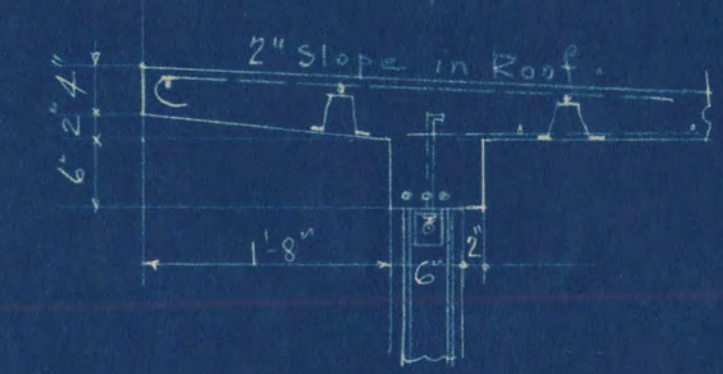
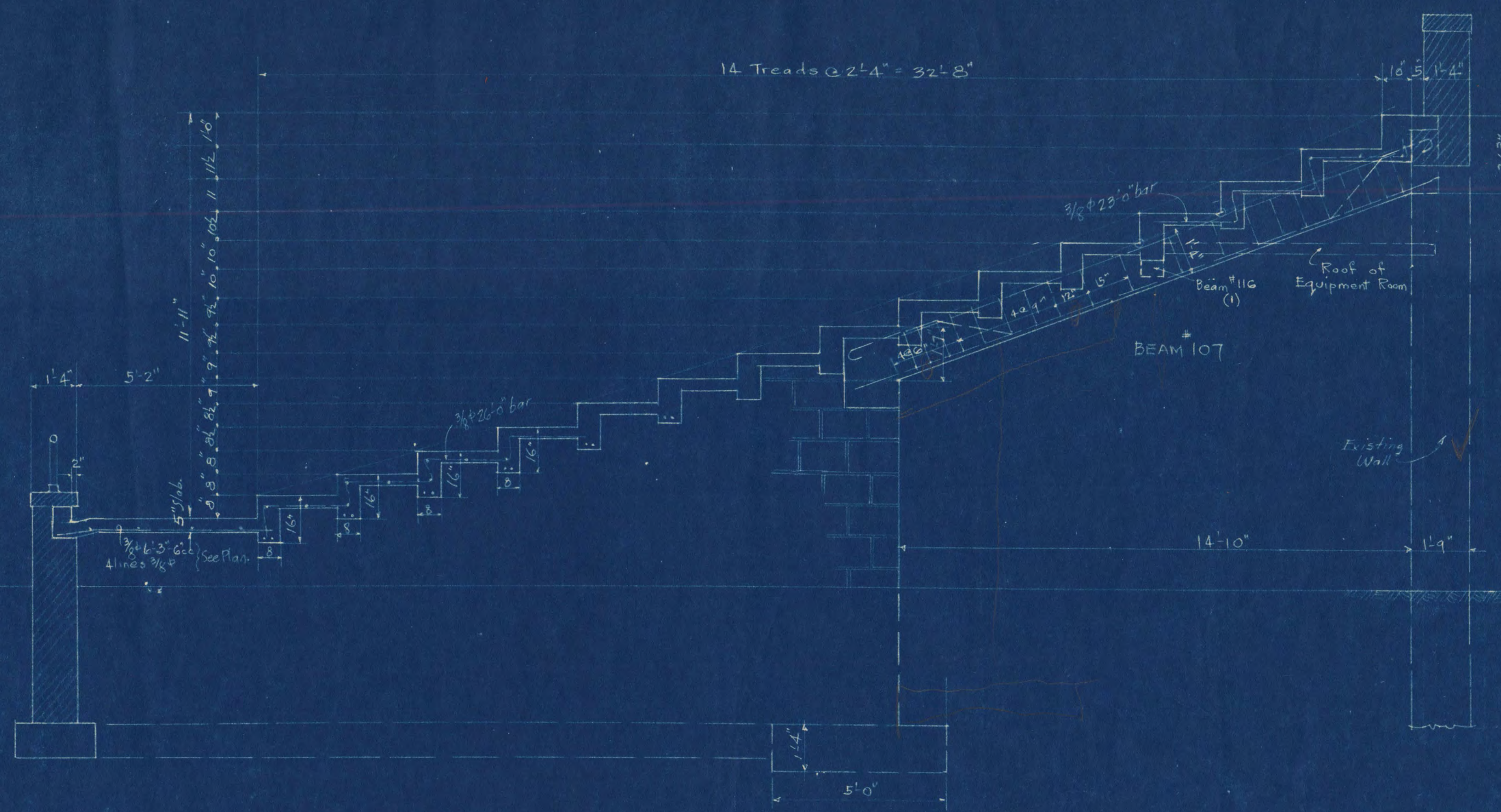


STADIUM FRAMING PLAN
SCALE 1/8"=1'-0"

STADIUM
STATE TEACHERS COLLEGE
ST. CLOUD, MINN.
GEORGE A. BELKE, PRESIDENT

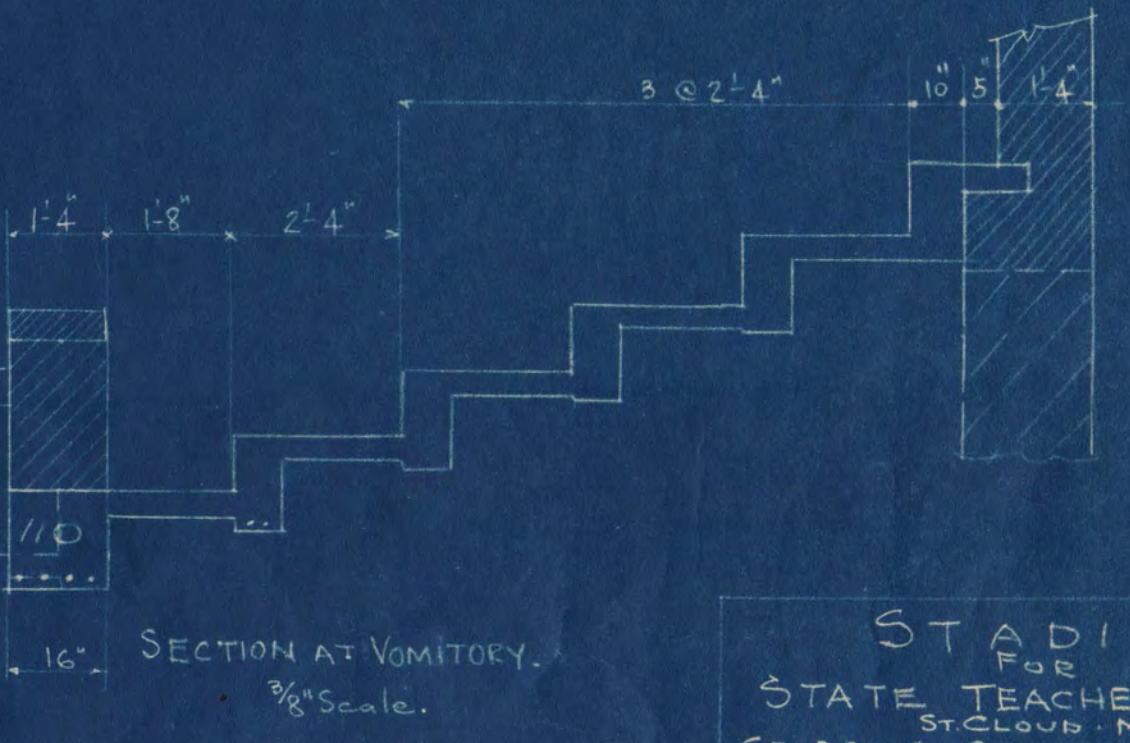
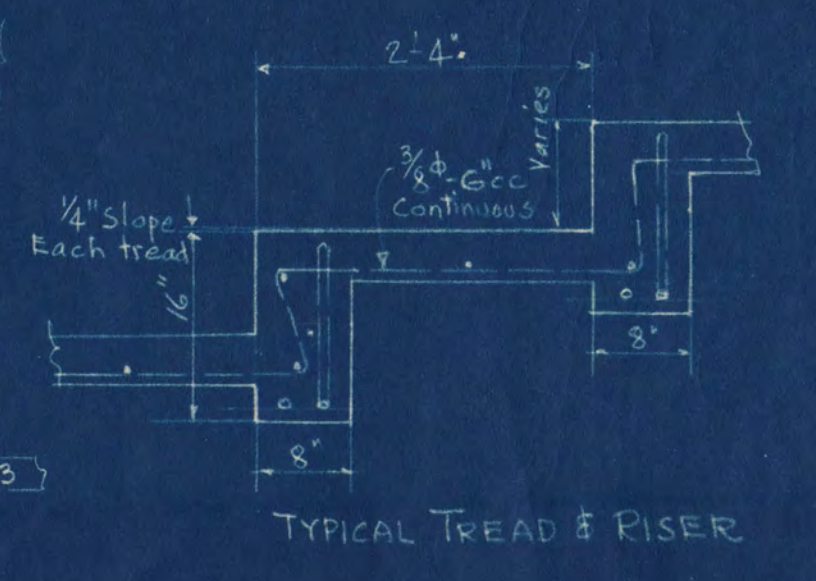
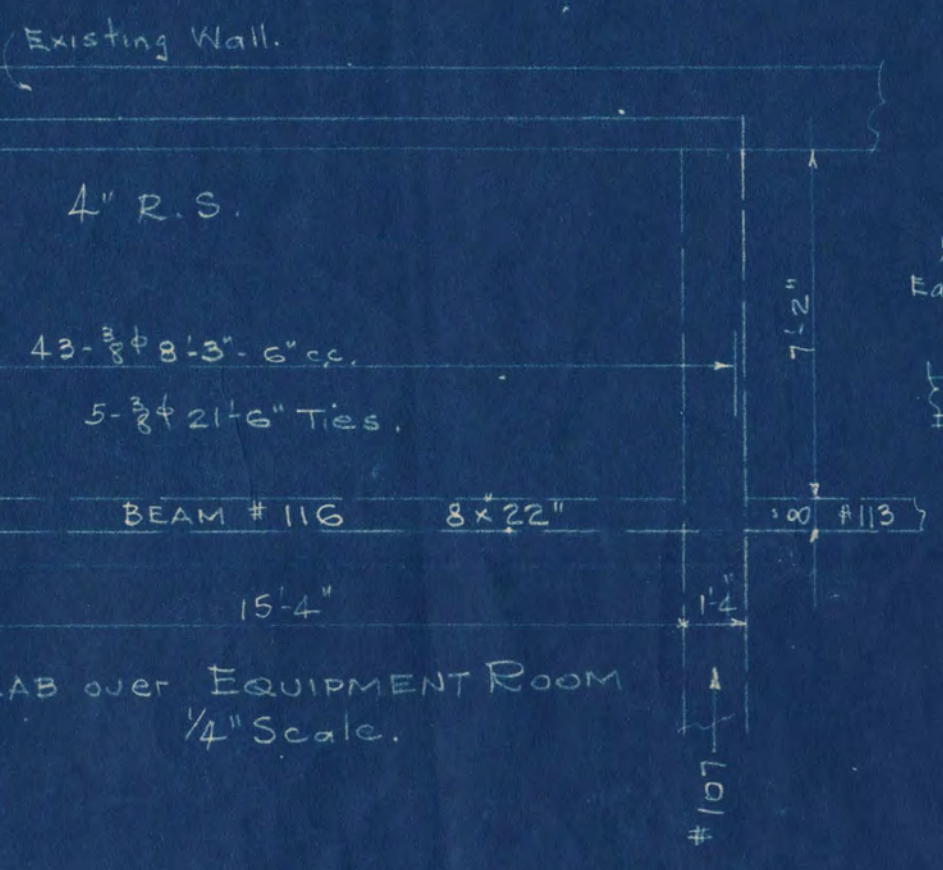
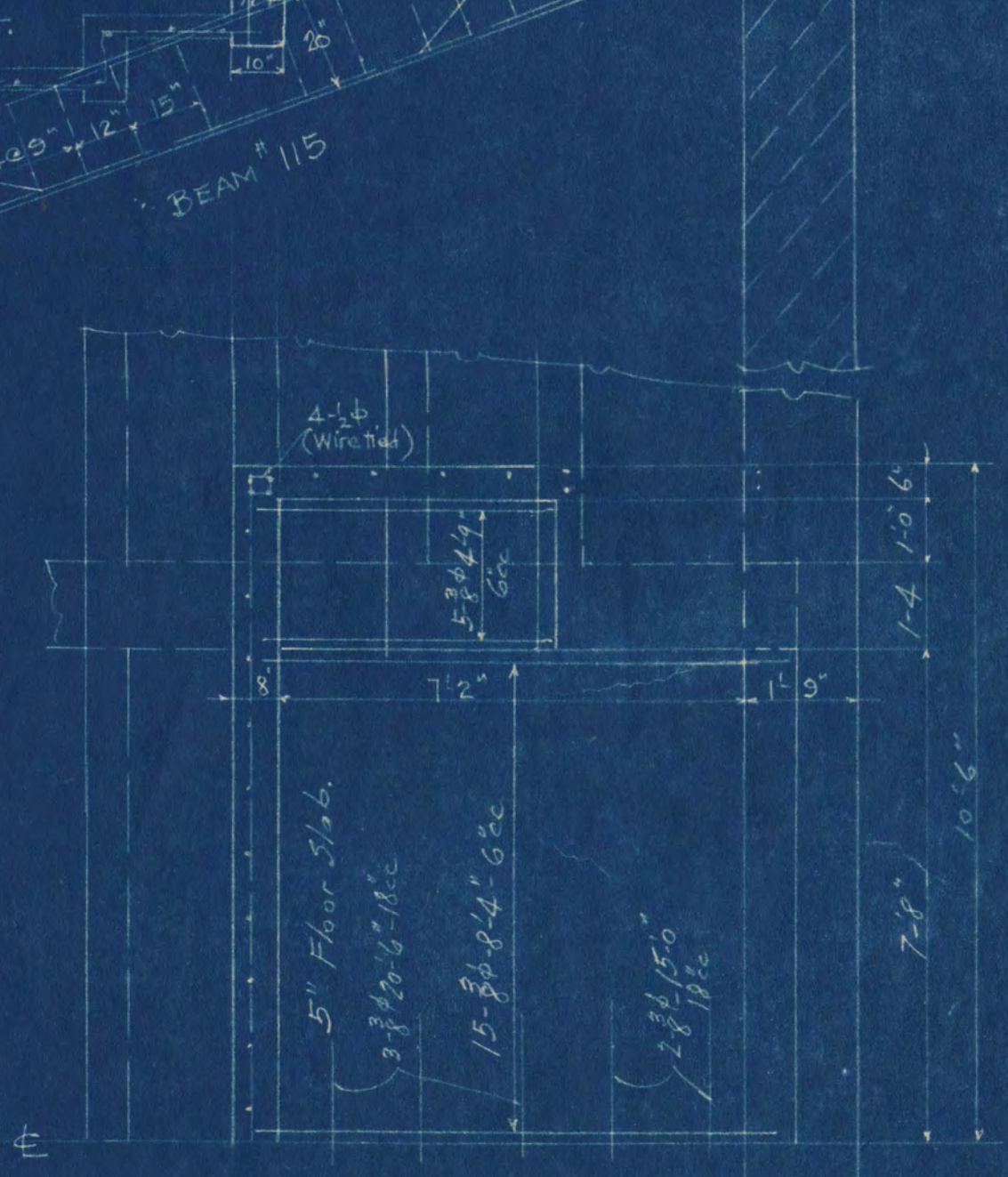
REVISIONS	FRANK W. JACKSON ARCHITECT	STRUCT.
CONTR. NO. 1-3815	ST. CLOUD, MINNESOTA	DATE
		JAN. 28 1939
		VERIFY ALL DIMENSIONS
		1 OF 2

SCHUETT, MEIER CO.
STRUCTURAL ENGINEERS
ST. PAUL - MINN.



BEAM SCHEDULE

BEAM MARK	SIZE	No	STRAIGHT	BENT BARS		3/8" STIRRUPS		TIE RODS Top Bars
				No	Size Length MK	No @ Length	MK	
101	10x16	8	1-3/4" - 17'-0"	1-5/8" @ 22'-6"	101	0	0	0
102	8x16	8	1-3/4" - 17'-0"	1-5/8" @ 22'-6"	101	0	0	0
103	8x16	6	1-3/4" - 17'-0"	1-3/8" @ 22'-6"	103	0	0	0
104	8x16	10	1-5/8" - 16'-6"	1-5/8" @ 26'-0"	104	0	0	0
105	8x16	18	1-3/4" - 16'-6"	1-5/8" @ 26'-0"	104	0	0	0
106	8x16	15	1-3/4" - 16'-6"	1-3/4" @ 26'-0"	106	0	0	0
107	16x16	16	2-1/8" - 18'-0"	1-1/8" @ 20'-0"	107A 107B	20 @ 3'-9"	S1	2-7/8" @ 15'-6"
108	10x16	2	1-5/8" - 13'-2"	1-5/8" @ 14'-4"	108	0	0	0
109	8x16	8	1-3/4" - 13'-2"	1-5/8" @ 14'-4"	109	0	0	0
110	16x16	2	3-1/2" - 13'-2"	2-1/2" @ 14'-4"	110	0	0	0
111	8x16	2	1-3/4" - 16'-6"	1-3/4" @ 22'-0"	111	0	0	0
112	8x16	2	1-7/8" - 16'-6"	1-3/4" @ 22'-0"	111	0	0	0
113	8x16	2	1-3/4" - 16'-6"	1-3/4" @ 22'-0"	111	0	0	0
114	10x16	1	2-7/8" - 16'-6"	1-1/2" @ 26'-0"	114	16 @ 3'-3"	S2	2-1" @ 16'-0"
115	16x20	2	2-1/4" - 17'-6"	2-1/8" @ 20'-6"	115	20 @ 4'-5"	S3	2-1" @ 16'-0"
116	8x22	1	1-7/8" - 17'-0"	1-7/8" @ 27'-0"	116	0	0	0



STADIUM
FOR
STATE TEACHERS COLLEGE
ST. CLOUD, MINN.
GEORGE A. SELKE - PRESIDENT

FRANK W. JACKSON
ARCHITECT
ST. CLOUD, MINNESOTA

SCHUETT, MEIER CO.
STRUCTURAL ENGINEERS.
ST. PAUL, MINN.

DATE
Jan. 28, 39

COMM. NO.
1-3815

VERIFY ALL DIMENSIONS

STRUCT SHEET
2
OF 2