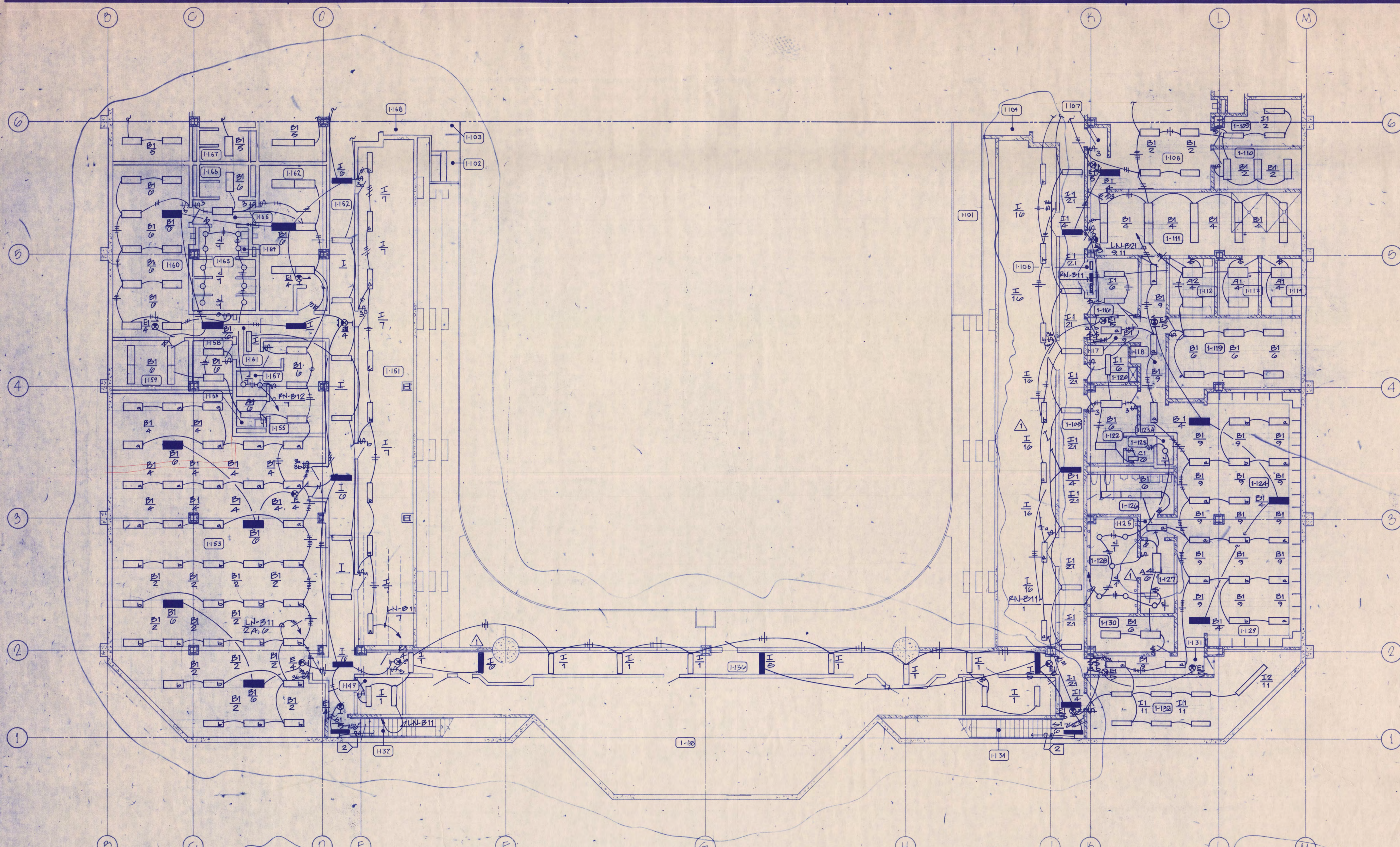
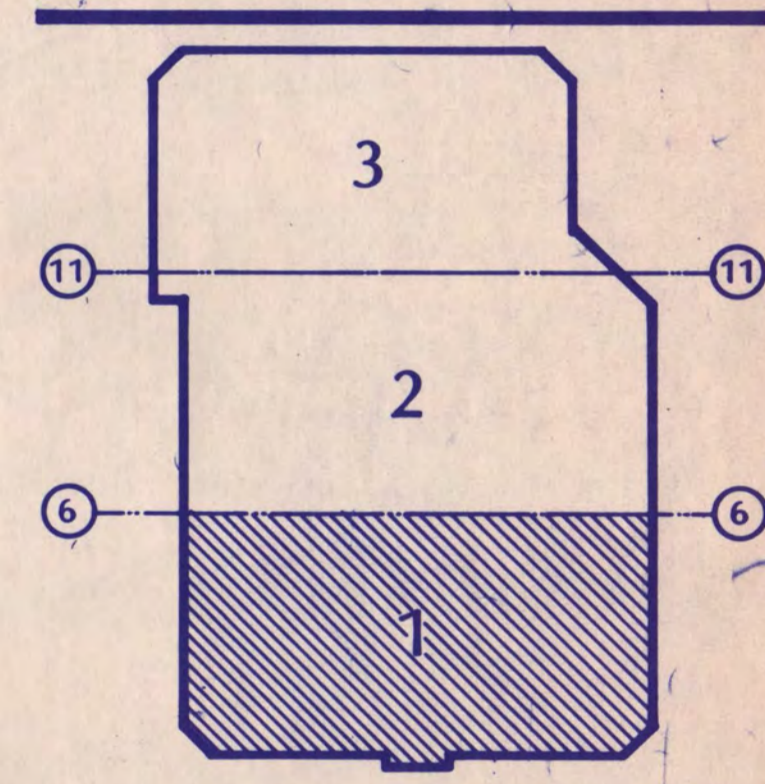


D.D. REVIEW ISSUE 2-8-88
C.D. REVIEW ISSUE 7-12-88
ISSUED FOR BIDDING 9-2-88
BULLETIN No. 1, 9-10-89



I hereby certify that this plan, specification, or report was prepared by me or under my direct supervision and that I am a duly Registered Professional Engineer under the laws of the State of Minnesota.
D. Lane Hersey
Date 7-12-88 Reg. No. 12418



KEY PLAN
NATIONAL HOCKEY CENTER

ST. CLOUD STATE UNIVERSITY

ST. CLOUD, MINNESOTA

Ellerbe

One Appletree Square
Minneapolis, MN 55425
(612) 853-2000
©Ellerbe 1988

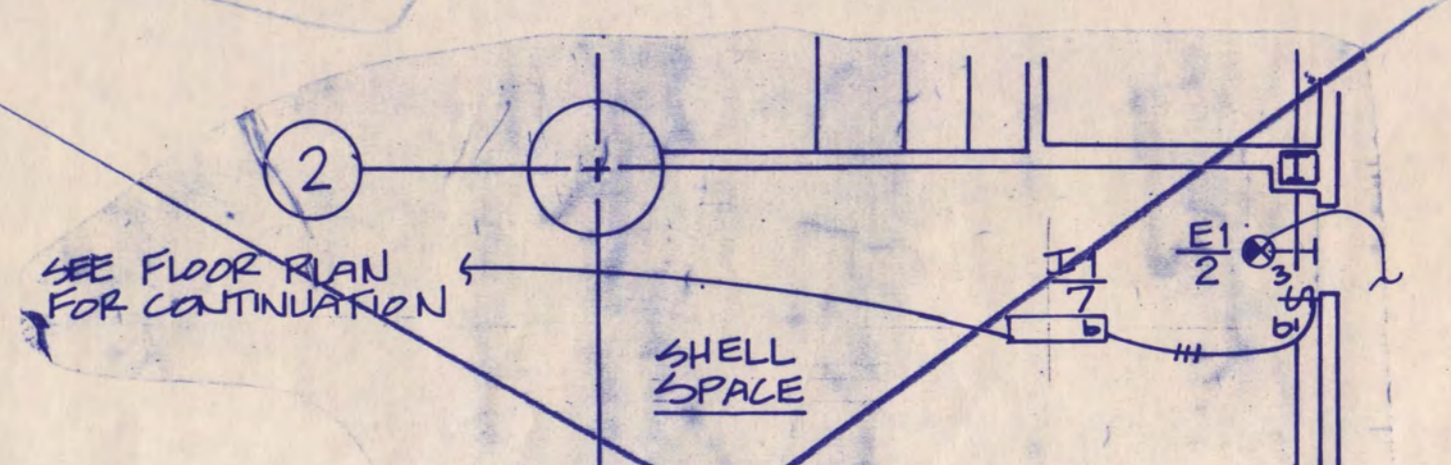
BASEMENT LEVEL LIGHTING PLAN AREA 1

Scale 1/8" = 1'-0"

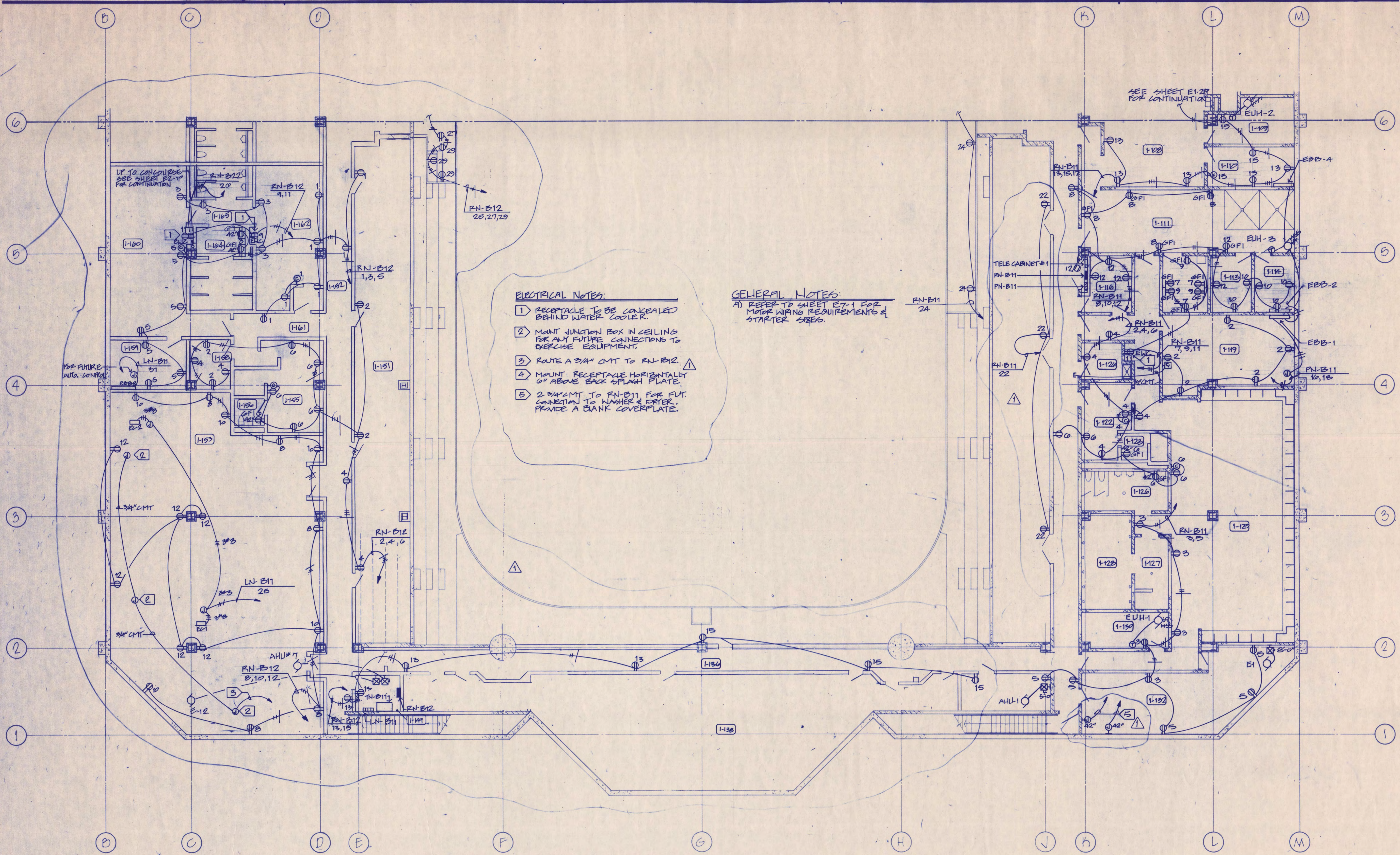
Date In Charge *D.L. HERSEY* Cont'n. No. 5160-571
Drawn By *R. W. EDWARDS*
Checked By *J. KIRCHNER* **E1-1L**

ELECTRICAL NOTES:
1 NOTE NOT USED
2 SEE SHEET E2-2L FOR CONTINUATION

GENERAL NOTES:
A UNLESS NOTED OTHERWISE ALL CEILING MOUNTED FIXTURES TO BE MOUNTED AT 9'-0" AFF (ROOMS WITHOUT CEILING).
B MOUNT EXIT LIGHTS AT 8'-0" AFF TO CENTERLINE UNLESS OTHERWISE INDICATED OR OTHERWISE REQUIRED BY CEILING HEIGHTS.



EHL ROOM 1-131 UNDER ADD ALTERNATE #1
OMT

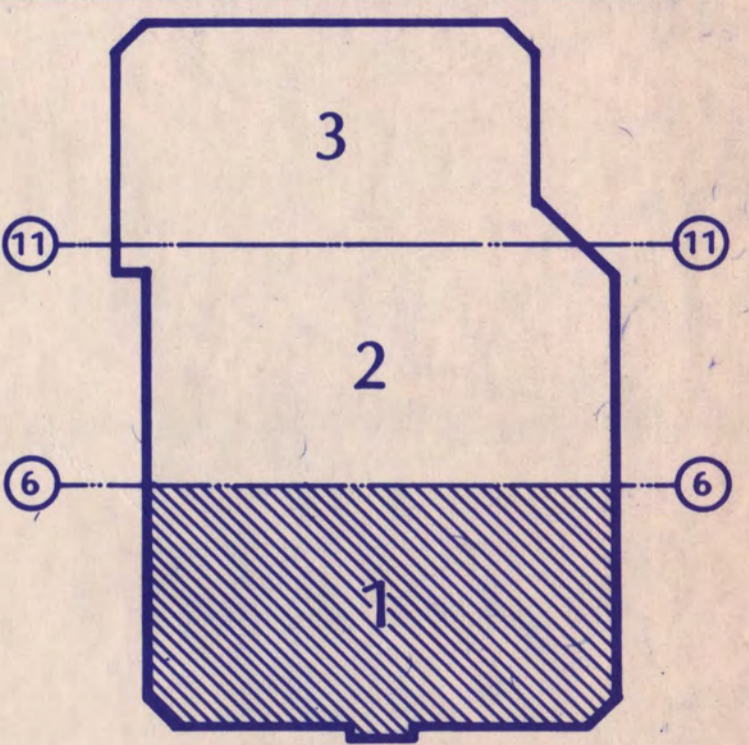


- ELECTRICAL NOTES:**
- RECEPTACLE TO BE CONCEALED BEHIND WATER COOLER
 - MOUNT JUNCTION BOX IN CEILING FOR ANY FUTURE CONNECTIONS TO OVERSEE EQUIPMENT.
 - ROUTE A 3/4" CMT TO RN-B12
 - MOUNT RECEPTACLE HORIZONTALLY 6" ABOVE BACK SPLASH PLATE.
 - 2 3/4" CMT TO RN-B11 FOR FUT. CONNECTION TO WASHER & DRYER. PROVIDE A BANK COVERPLATE.

GENERAL NOTES:
 A) REFER TO SHEET E1-1 FOR MOTOR WIRING REQUIREMENTS & STARTER SIZES.

I hereby certify that this plan, specification, or report was prepared by me or under my direct supervision and that I am a duly Registered Professional Engineer under the laws of the State of Minnesota.

R. Lane Hersey
 Date: 7-12-88 Reg. No. 12418



KEY PLAN
NATIONAL HOCKEY CENTER

ST. CLOUD STATE UNIVERSITY
 ST. CLOUD, MINNESOTA

Ellerbe
 One Appletree Square
 Minneapolis, MN 55425
 (612) 853-2000
 ©Ellerbe 1988

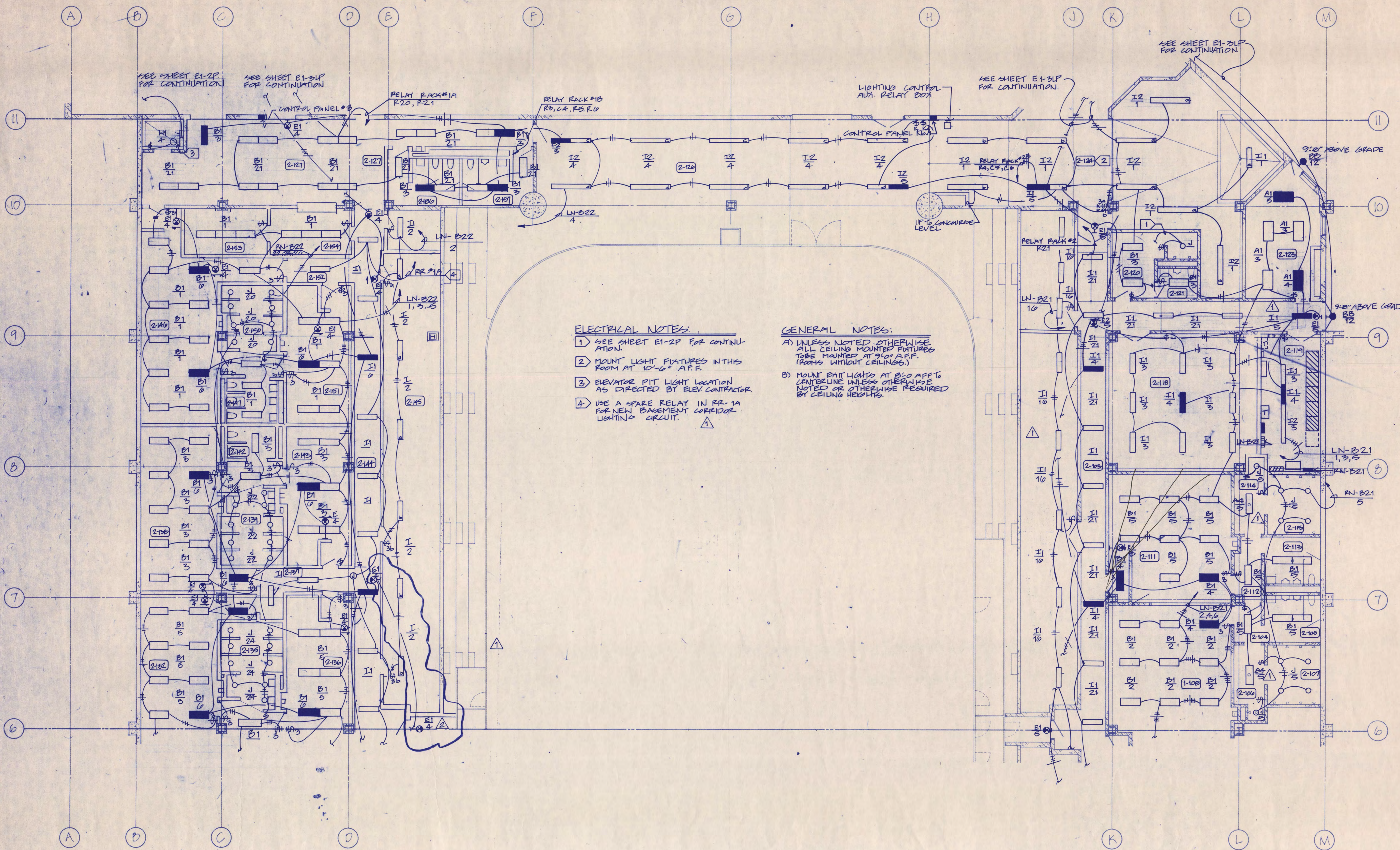
**BASEMENT LEVEL
 POWER PLAN AREA 1**

Scale 1/8" = 1'-0"

Date: 7-12-88 Comm. No. 5160-81
 In Charge: R. L. HERSEY
 Drawn By: S. WOODWARD
 Checked By: J. KIRCHNER

E1-1P

Revision	Date	No.
DD REVIEW ISSUE	6-8-88	
C.D. REVIEW ISSUE	7-12-88	
ISSUED FOR BIDDING	9-9-88	
BULLETIN No. 1	3-10-89	Δ
AS-BUILTS		Δ



ELECTRICAL NOTES:

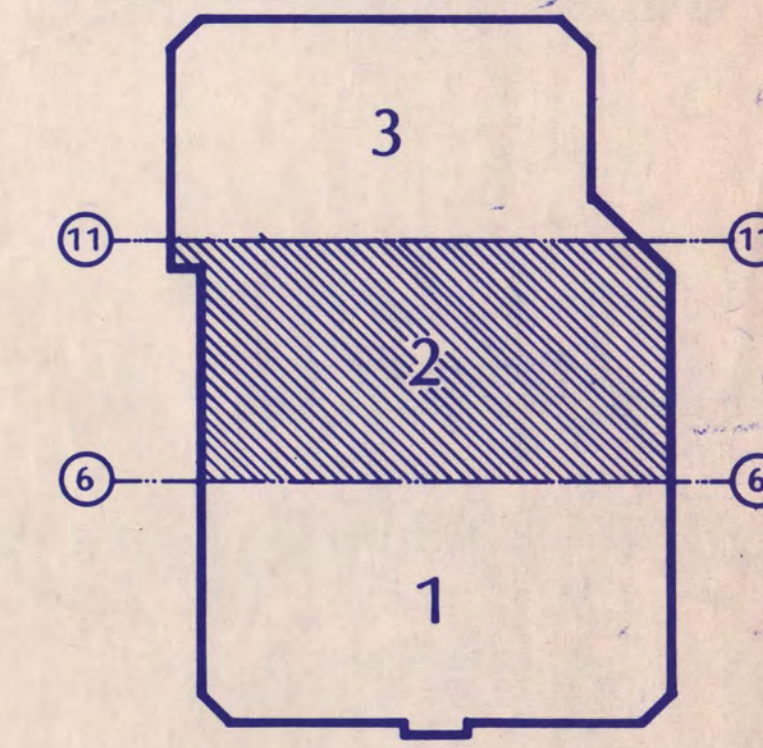
- 1) SEE SHEET E1-2P FOR CONTINUATION.
- 2) MOUNT LIGHT FIXTURES IN THIS ROOM AT 10'-6" A.F.F.
- 3) ELEVATOR PIT LIGHT LOCATION AS DIRECTED BY ELEV CONTRACTOR.
- 4) USE A SPARE RELAY IN RR-1A FOR NEW BASEMENT CORRIDOR LIGHTING CIRCUIT. Δ

GENERAL NOTES:

- A) UNLESS NOTED OTHERWISE ALL CEILING MOUNTED FIXTURES TO BE MOUNTED AT 9'-0" A.F.F. (ROOMS WITHOUT CEILING).
- B) MOUNT EXIT LIGHTS AT 8'-0" AFF TO CENTERLINE UNLESS OTHERWISE NOTED OR OTHERWISE REQUIRED BY CEILING HEIGHTS.

I hereby certify that this plan, specification, or report was prepared by me or under my direct supervision and that I am a duly Registered Professional Engineer under the laws of the State of Minnesota.

D. Lane Hersey
 Date 7-12-88 Reg. No. 12418



KEY PLAN
NATIONAL HOCKEY CENTER



ST. CLOUD, MINNESOTA

Ellerbe

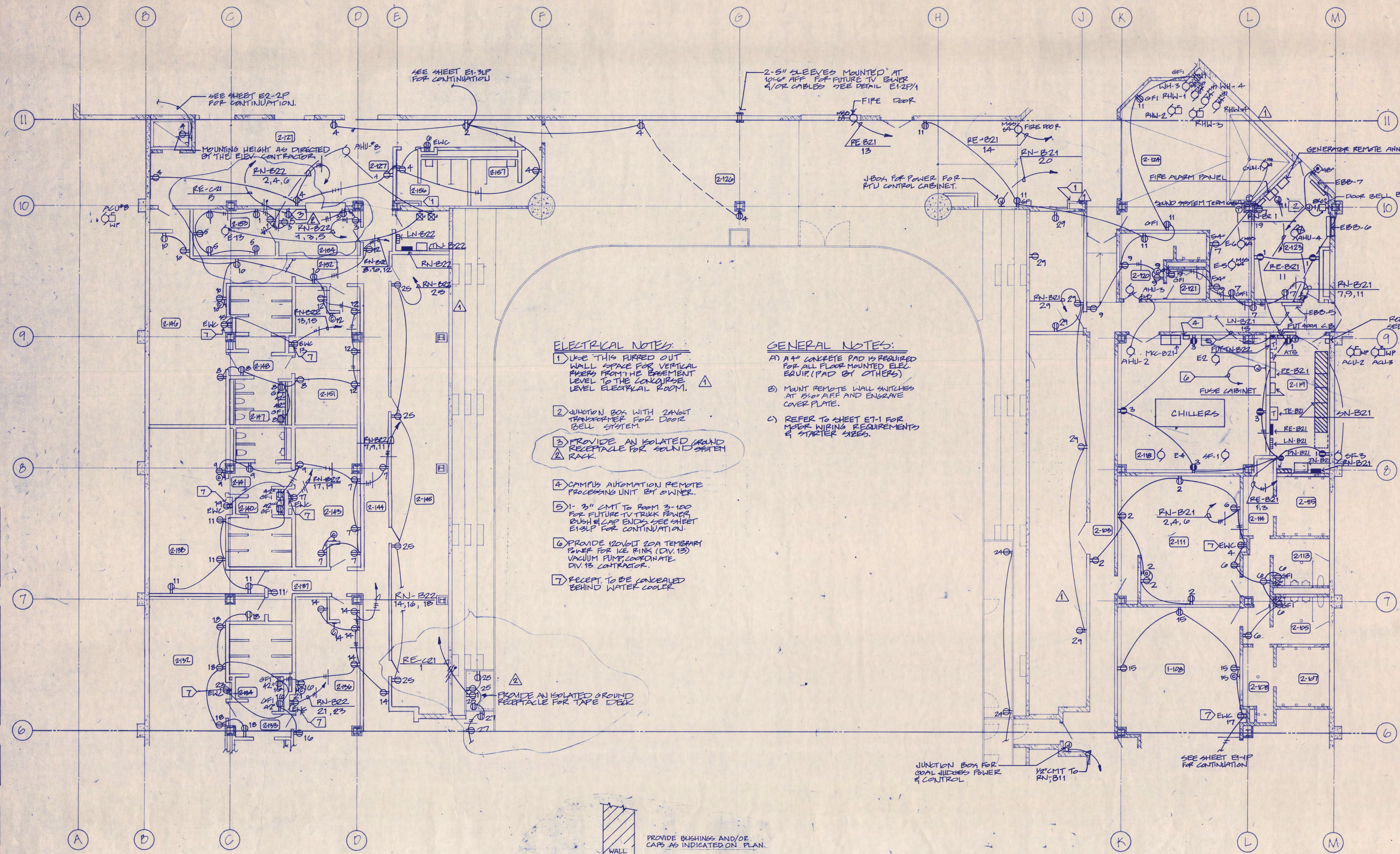
One Appletree Square
 Minneapolis, MN 55425
 (612) 853-2000
 ©Ellerbe 1988

BASEMENT LEVEL LIGHTING PLAN AREA 2

Scale 1/8" = 1'-0"

Date 2/27/89 Comm. No. 0766-871
 In Charge D.L. HERSEY
 Drawn By J. WOODWARD
 Checked By J. KIRCHNER

E1-2L

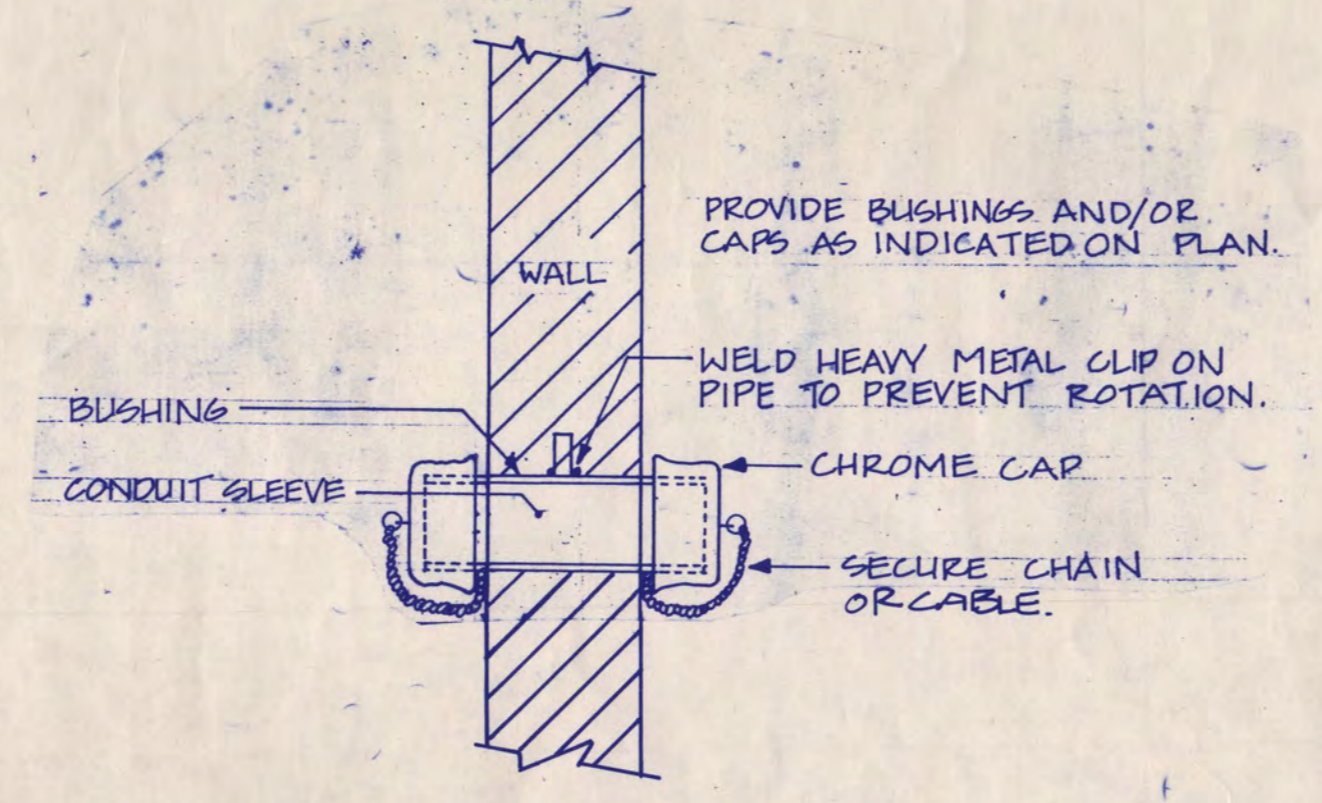


ELECTRICAL NOTES:

- 1) USE THIS PIPED OUT WALL SPACE FOR VERTICAL RAYS FROM THE BASEMENT LEVEL TO THE CONCOURSE LEVEL ELECTRICAL ROOM.
- 2) JUNCTION BOX WITH 240V TRANSFORMER FOR DOOR BELL SYSTEM.
- 3) PROVIDE AN ISOLATED GROUND RECEPTACLE FOR SOUND SYSTEM RACK.
- 4) CAMPUS AUTOMATION REMOTE PROCESSING UNIT BY OWNER.
- 5) 1/2" 3" CMT TO ROOM 3-100 FOR FUTURE TV TRUCK POWER BUSH & CAP ENDS SEE SHEET E1-3LP FOR CONTINUATION.
- 6) PROVIDE 120V/1 20A TEMPORARY POWER FOR ICE RINK (DIV. 13) VACUUM PUMP COORDINATE DIV. 13 CONTRACTOR.
- 7) RECEPT. TO BE CONCEALED BEHIND WATER COOLER.

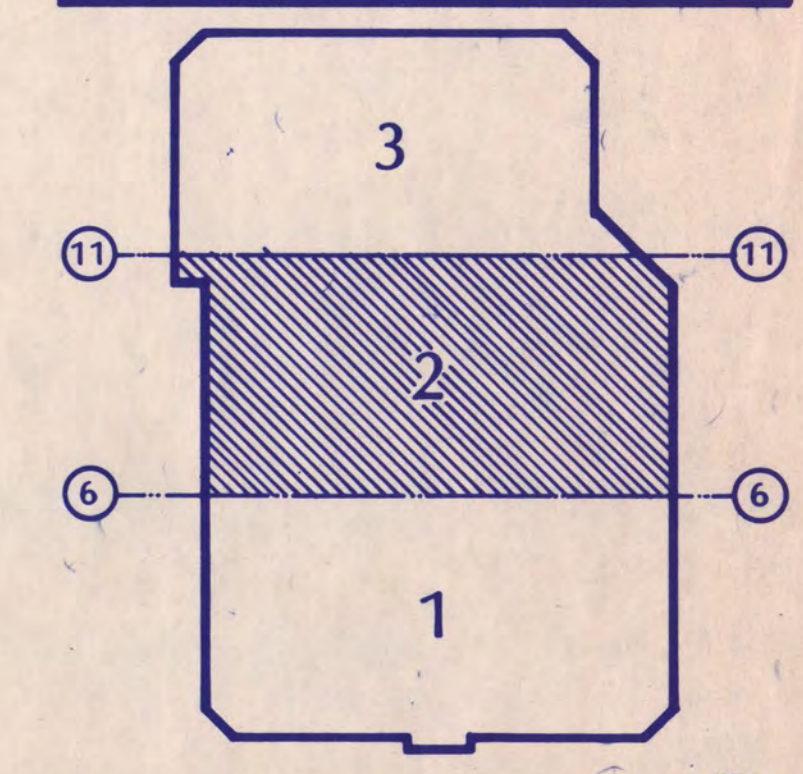
GENERAL NOTES:

- A) 4" CONCRETE PAD IS REQUIRED FOR ALL FLOOR MOUNTED ELEC. EQUIP. (PAD BY OTHERS)
- B) MOUNT REMOTE WALL SWITCHES AT 5'0" AFF AND ENGRAVE COVER PLATE.
- C) REFER TO SHEET E1-1 FOR MISC. WIRING REQUIREMENTS & STARTER SIZES.



E1-2P TYPICAL SLEEVE THRU WALL DETAIL
NO SCALE

I hereby certify that this plan, specification, or report was prepared by me or under my direct supervision and that I am a duly Registered Professional Engineer under the laws of the State of Minnesota.
D. Lane Hersey
 Date: 7-12-88 Reg. No. 12418



KEY PLAN
NATIONAL HOCKEY CENTER

ST. CLOUD STATE UNIVERSITY
 ST. CLOUD, MINNESOTA

Ellerbe

One Appletree Square
 Minneapolis, MN 55425
 (612) 853-2000
 ©Ellerbe 1988

BASEMENT LEVEL POWER PLAN AREA 2

Scale: 1/8" = 1'-0"

Date: SEPT. 2, 1988 Comm. No. 0766-871
 In Charge: D.L. HERSEY
 Drawn By: WOODWARD
 Checked By: KIRCHNER

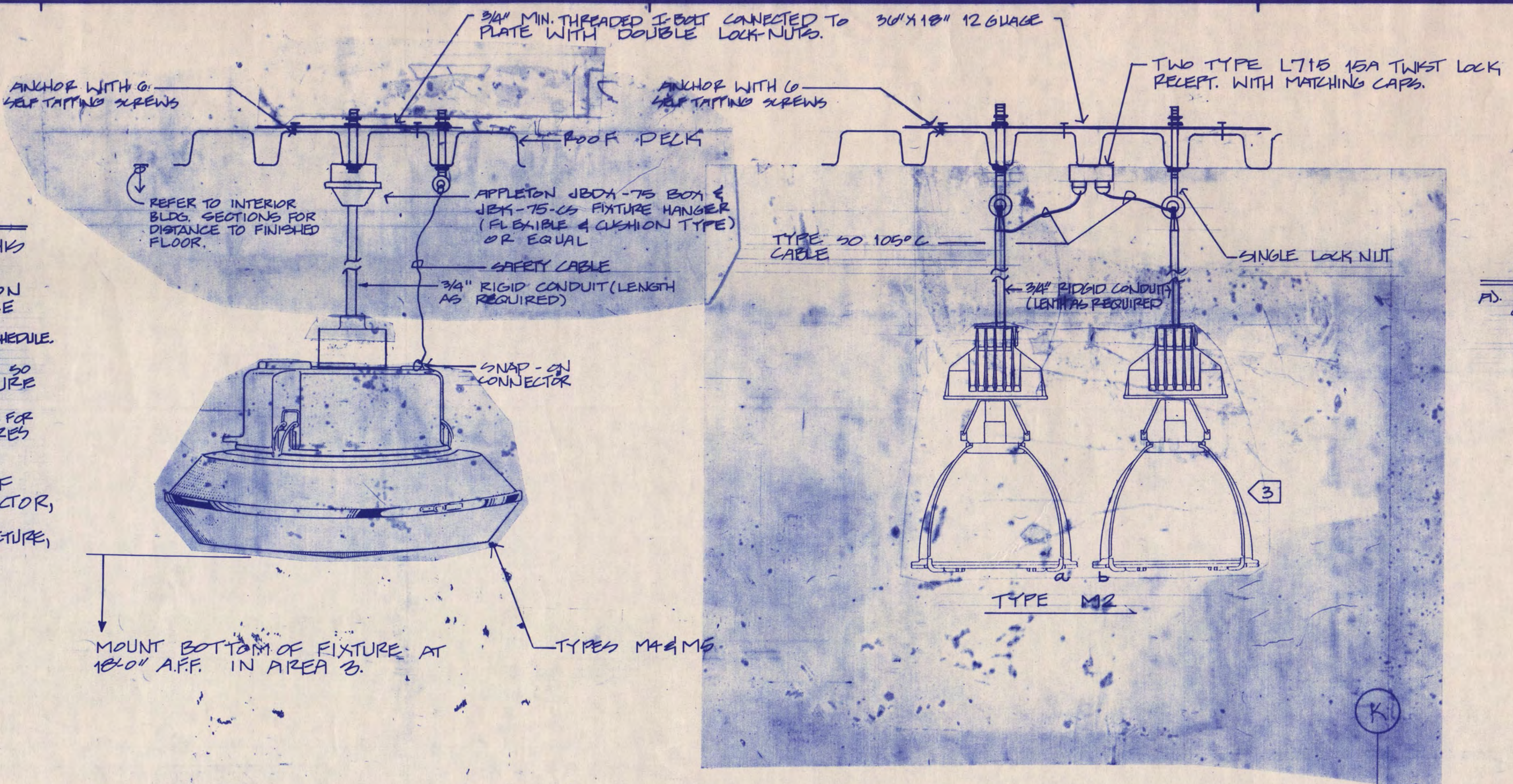
D.D. REVIEW ISSUE 6-8-88
 C.D. REVIEW ISSUE 7-12-88
 ISSUED FOR BIDDING 8-9-88
 BULLETIN NO. 6 9/15/89

PRACTICE ICE LIGHTING SYSTEM NOTES

- A. SEE DETAIL E1-3LP FOR FIXTURE MOUNTING DETAILS.
- B. HID FIXTURES SHALL MEET THE FOLLOWING MAXIMUM NOISE LEVEL CRITERIA.
 NOISE PRODUCED BY A SINGLE FIXTURE WHEN MEASURED IN A RELATIVELY LARGE AND NON-REVERBERANT ROOM BY A STANDARD ANSI TYPE I SOUND LEVEL METER AND ANSI CLASS 2 OCTAVE FILTER SET WITH THE MICROPHONE POSITIONED FOUR FEET BELOW OR TO THE SIDE OF THE LAMP, BALLAST AND REFLECTOR ASSEMBLY SHALL NOT EXCEED THE FOLLOWING:
 OCTAVE BAND CENTER FREQUENCY - HZ
 125 250 500 1000 2000 4000
 SOUND PRESSURE LEVEL (dB re: $2 \times 10^{-5} \text{ n/m}^2$)
 49 44 36 31 28 26
 THE MANUFACTURER SHALL PROVIDE TEST DATA FROM AN INDEPENDENT LABORATORY TO THE ARCHITECT, IF REQUESTED, TO VERIFY COMPLIANCE WITH THE ABOVE SPECIFIED MAXIMUM LEVELS.
 ANY BALLAST THAT CREATES NOISE LEVELS ABOVE THE SPECIFIED LEVELS WITHIN THE FIRST YEAR OF OPERATION, SHALL BE REPLACED AT NO COST TO THE OWNER.
- C. FIXTURE LOCATION AND COUNTS ARE BASED ON A SPECIFIC MANUFACTURER. IF ADDITIONAL FIXTURES ARE REQUIRED BY OTHER MANUFACTURERS IN ORDER TO MEET THE DESIGN CRITERIA, THEY SHALL BE PROVIDED AT NO ADDITIONAL COST. THE FIXTURE MANUFACTURER SHALL FURNISH TO THE ARCHITECT/ENGINEER ONE SAMPLE OF EACH FIXTURE TYPE COMPLETE WITH MOUNTING BRACKET.
- D. FIXTURE MANUFACTURER SHALL PROVIDE A COMPUTER PRINTOUT OF FOOTCANDLE DISTRIBUTION LEVELS FOR EACH TYPE OF LIGHTING SYSTEM.
- E. REQUIREMENTS FOR ARENA CIRCUITING:
 1. MAXIMUM: THREE CIRCUITS PER HOMERUN.

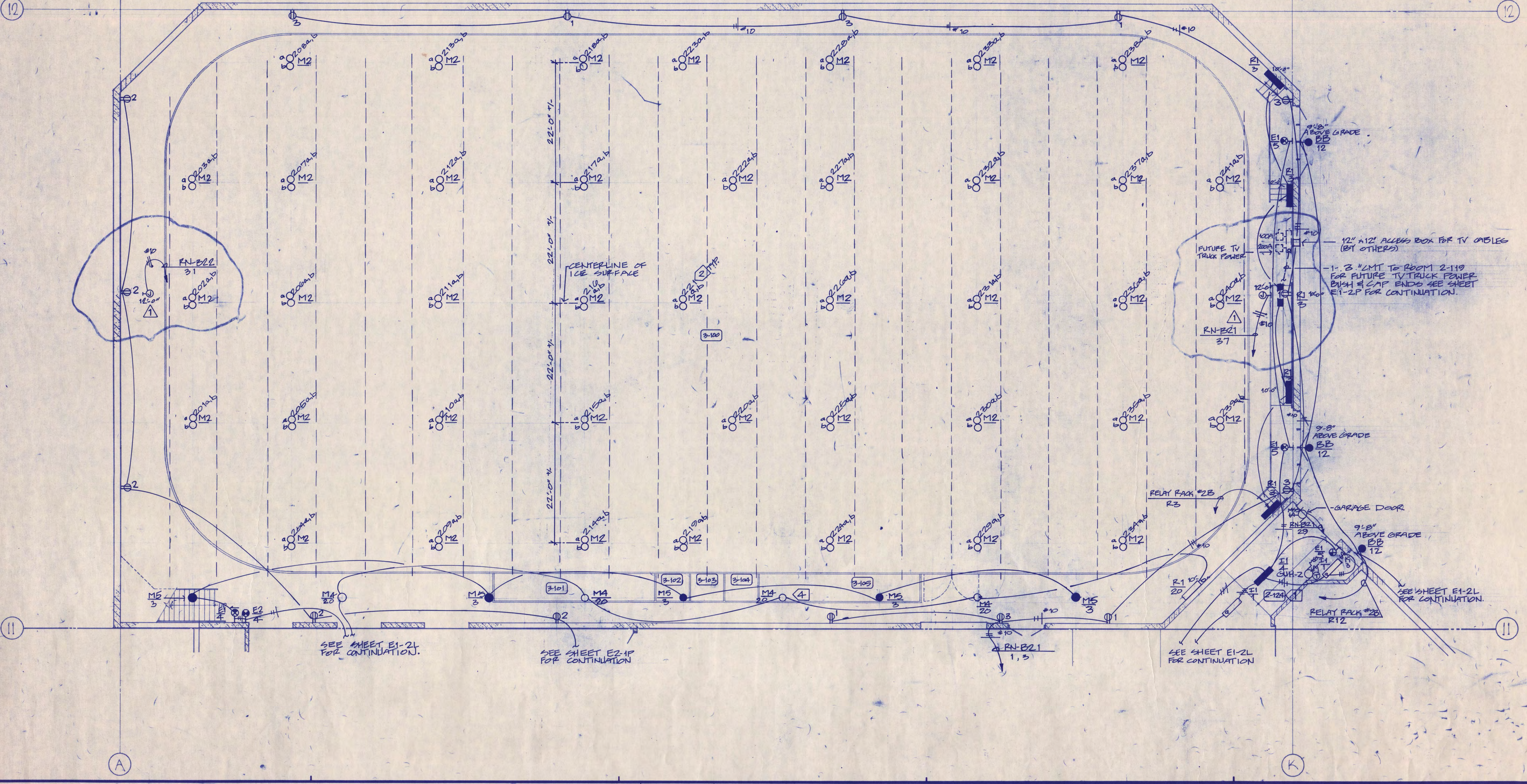
ELECTRICAL NOTES:

- 1. MOUNT LIGHT FIXTURES IN THIS ROOM AT 10'-0" A.F.F.
- 2. NUMBER DENOTES FIXTURE NO. ON LIGHTING CONTROL SCHEDULE. SEE SHEET E5-1 FOR PRACTICE ICE CIRCUITING ON LIGHTING CONTROL SCHEDULE.
- 3. PENDANT MOUNT FIXTURE DOWN SO THAT THE BOTTOM OF THE FIXTURE IS 20'-0" ABOVE THE BOTTOM OF THE JOISTS, TYPICAL FOR TYPE M12 LIGHT FIXTURES IN PRACTICE ICE AREA.
- 4. COORDINATE INSTALLATION OF FIXTURE WITH CIVIL CONTRACTOR, MAINT FIXTURE BELOW DUCT. SUSPEND FIXTURE FROM STRUCTURE, NOT FROM DUCT.

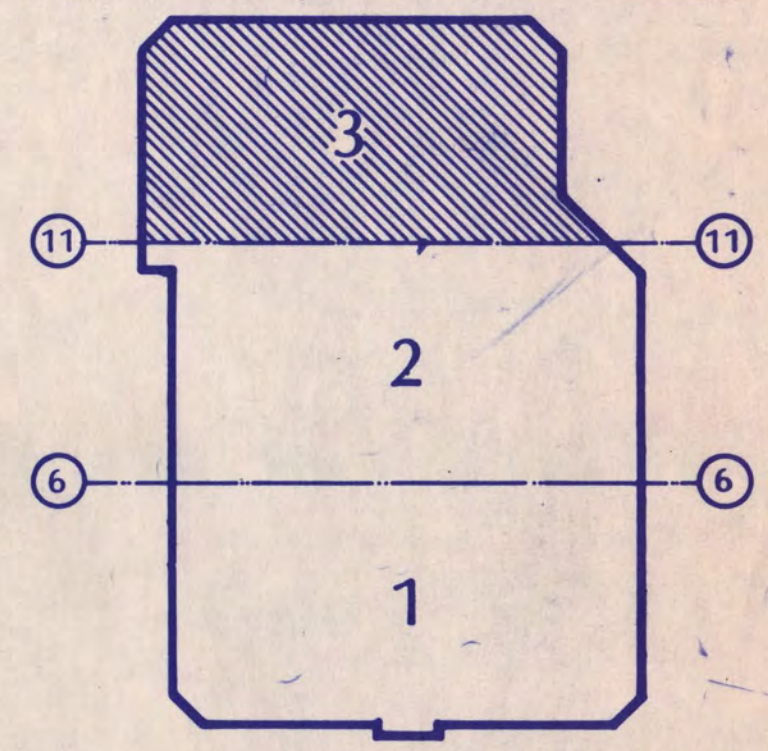


GENERAL NOTES:
 MOUNT EXIT LIGHTS AT 8'-0" AFF TO CENTERLINE UNLESS INDICATED OTHERWISE OR OTHERWISE REQUIRED BY CEILING HEIGHTS.

E1-3LP FIXTURE MOUNTING DETAIL FOR FIXTURES LOCATED IN AREA 3
 1/4" = 1'-0" NO SCALE



I hereby certify that this plan, specification, or report was prepared by me or under my direct supervision and that I am a duly registered Professional Engineer under the laws of the State of Minnesota.
 D. Lane Hersey
 Date 7-12-88 Reg. No. 12418



KEY PLAN
NATIONAL HOCKEY CENTER

ST. CLOUD STATE UNIVERSITY

ST. CLOUD, MINNESOTA

Ellerbe

One Appletree Square
 Minneapolis, MN 55425
 (612) 853-2000
 © Ellerbe 1988

BASEMENT LEVEL
 LTC. & PWR. PLAN AREA 3

Scale 1/4" = 1'-0"

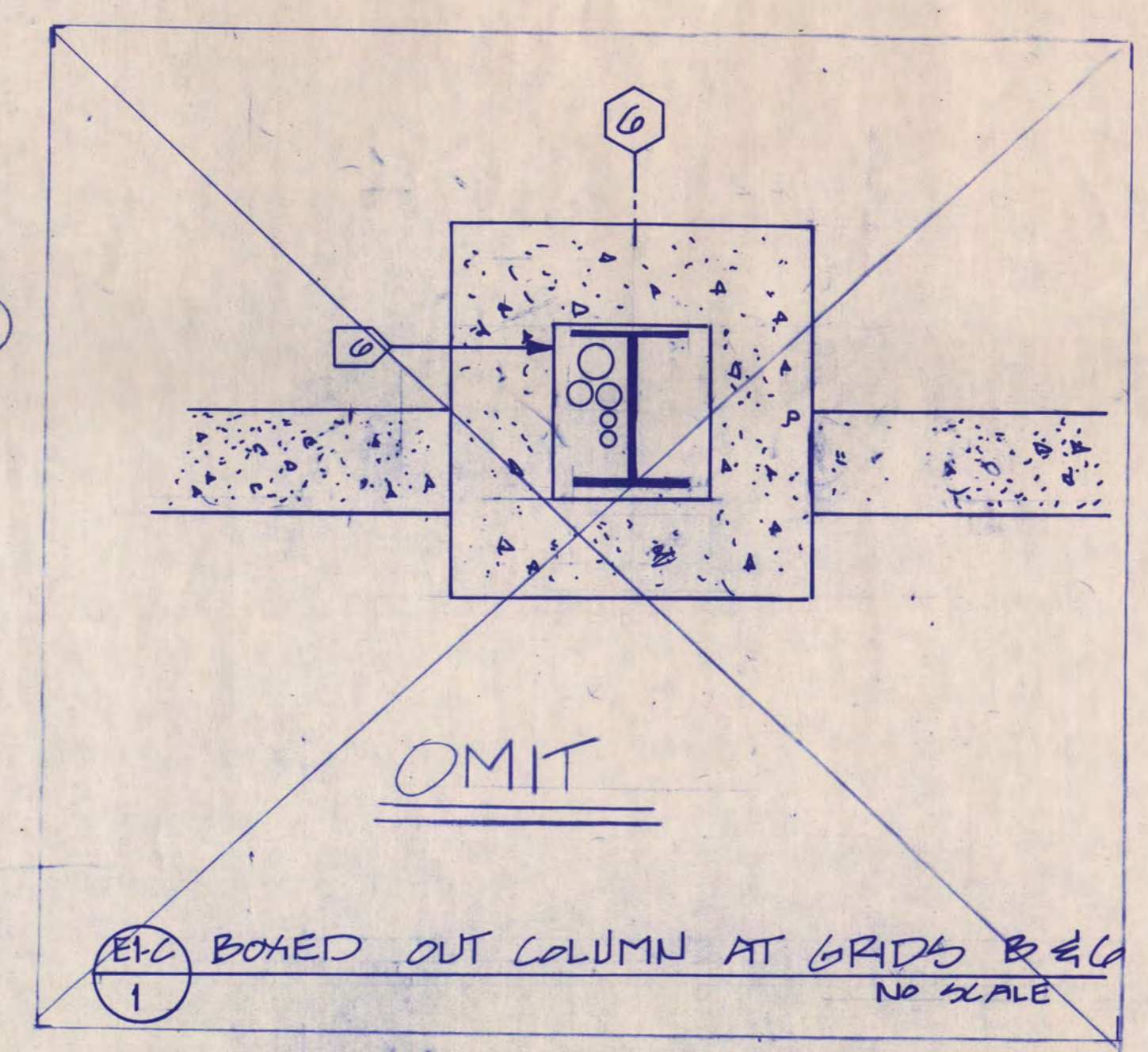
Date SEPT. 9, 1988 Comm. No. E166-871
 In Charge D.L. HERSEY
 Drawn By S. WOODWARD
 Checked By J. KIRCHNER

E1-3LP

CD REVIEW ISSUE	6-8-88
C.D. REVIEW ISSUE	7-12-88
ISSUED FOR BIDDING	9-9-88
BULLETIN NO. 1	3-10-89
BULLETIN NO. 5	7-25-89
BULLETIN NO. 6	9-16-89
AS-BUILT	

ELECTRICAL NOTES CONT.

- 23 SPEAKER BACK BOX PROVIDED BY SOUND SYSTEM CONTRACTOR AND INSTALLED BY DIV. 16 CONTRACTOR. MOUNT AT 9'-0" AFF.
- 24 PROVIDE A 2 GANG BOX WITH A ROUND GROMMETED OPENING COVERPLATE. SURFACE MOUNT ON CEILING SLAB.
- 25 1"O TO "C" J-BOX ROOM 2-220.
- 26 3/4"O TO "L" J-BOX ROOM 2-220.
- 27 3/4"O TO "M" J-BOX ROOM 2-220.
- 28 3/4"O TO "S" J-BOX ROOM 2-220.
- 29 PROVIDE A 3 GANG BOX FOR SOUND SYSTEM VOLUME CONTROL MOUNT AT 48" AFF.
- 30 1-3/4" CMT STUBBED INTO THE PRACTICE ICE CEILING SPACE FROM J-BOX. MY FOR FUTURE SOUND SYSTEM. BUSH & CAP CONDUIT END. INSTALL CONDUIT 6" BELOW CEILING.
- 31 PROVIDE A FIRE ALARM RED STROBE LIGHT IN A W.P. SINGLE GANG BOX ABOVE THE SIAMESE CONNECTION. PROVIDE ALL NECESSARY FENDER FLASHER AND AUXILIARY RELAYS IN FIRE ALARM CONTROL PANEL. SIMPLEX # 2204-9005.



FIRE ALARM WIRING SCHEDULE!

- a: 2 #18 TWISTED PAIR
- b: 1 #18 (SOLID-NOT STRANDED)

NOTES:
1) SEE SHEET E2-C FOR FIRE ALARM ZONE SCHEDULE.

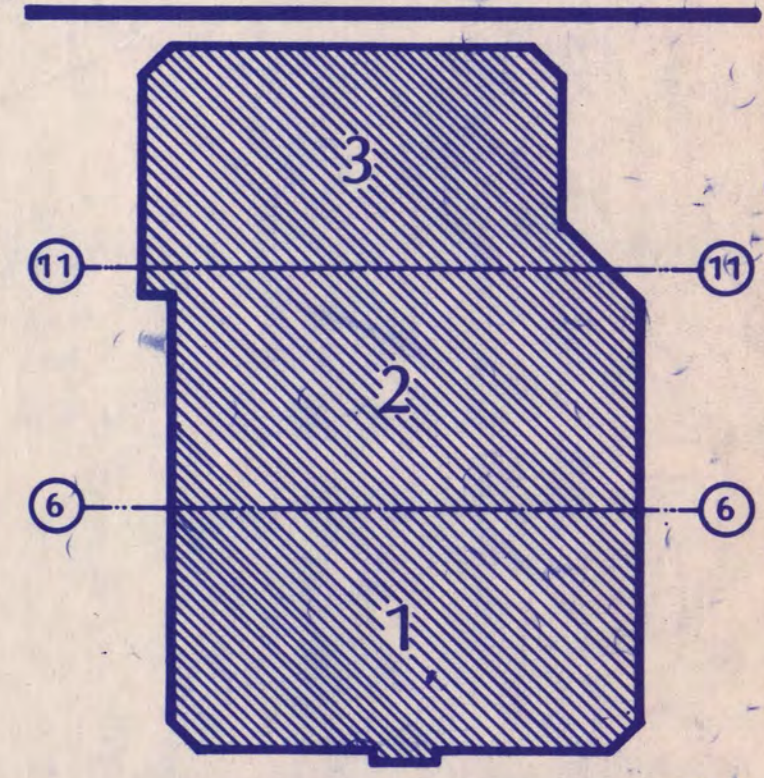
ELECTRICAL NOTES

- 1) ROOF TOP UNIT (RTU) CONTROL CABINET. (BY DIV. 15)
- 2) ANGLE CABLE LADDER UP & DOWN TO MAINTAIN THE 9" AFF MOUNTING HEIGHT OVER STAIRS AND RAMP.
- 3) TYPE 'B' CABLE LADDERBALL MOUNT AT 9" ABOVE FINISHED FLOOR.
- 4) SEE SHEET E2-C FOR CONTINUATION OF ALLEYS FOR CABLE LADDER.
- 5) 1" CMT TO TELEPHONE TERMINAL BOARD IN ROOM 2-219.
- 6) 2 1/4" CMT FOR FUTURE TELEPHONE, 1-2 1/2" CMT FOR FUTURE POWER, & 1-3/4" & 1-1" CMT FOR TIME & SCORE KEEPERS IN COLUMN ENCLOSURE UP TO FUTURE PRESS BOX. SEE SHEET E2-C FOR CONTINUATION.
- 7) SEE E2-A FOR CONTINUATION. PROVIDE TWO FULL PROX. ONE FOR FIRE ALARM AND ONE FOR CEAS AND 2" SPARE.
- 8) 1-1" CMT TO SOUND SYSTEM TERMINAL CABINET, RM. 2-123.
- 9) NOTE NOT USED.
- 10) 1-3/4" CMT TO ROOM 2-220 (SOUND SYSTEM)
- 11) 1-1" CMT TO ROOM 2-220 (SOUND SYSTEM)
- 12) 3-1 1/2" CMT STUBBED INTO PRACTICE ICE CEILING SPACE FOR FUTURE SOUND SYSTEM. BUSH & CAP END. INSTALL CONDUIT 6" BELOW CEILING. FROM "S" J-BOX ROOM 2-220.
- 13) 3/4" TO FIRE ALARM PANEL IN ROOM 2-123.
- 14) 3/4" TO COMMUNICATION MODULE IN FIRE ALARM PANEL IN ROOM 2-123.
- 15) 1" CMT TO TELE. TERM. CABINET #1 IN ROOM 1-106.
- 16) LOCATE SPARE CONDUIT FOR FUTURE EMERGENCY SERVICE TO HALLBACK HALL BELOW EMERGENCY PANEL PE-B21. (LABEL CONDUIT)
- 17) SMOKE DETECTOR FOR ELEVATOR FIRE CONTROL. PROVIDE A CONNECTION TO ELEVATOR CONTROLLER.
- 18) PROVIDE A CONNECTION FROM SMOKE DETECTOR TO MOTORIZED FIRE DOORS.
- 19) 12" 1/2" X 1/4" JUNCTION BOX, MINIMUM 3 GAUGE STEEL.
- 20) UP TO 12" CONDUIT TO SCOREBOARD IN COLUMN ENCLOSURE. SEE E2-C FOR CONTINUATION.
- 21) 1-5/8" CMT (PVC) FROM ROOM 2-123 FOR FUTURE TV CAMERA CABLES. STUB CONDUIT THROUGH WALL ABOVE CABLE LADDER AND CAP. SEE SHEET E2-C FOR CONTINUATION.

GENERAL NOTES:

- A) ALL SOUND SYSTEM & SCOREBOARD/GOAL JUDGE RELATED JUNCTION BOXES ARE MIN. 2 GANG UNLESS OTHERWISE NOTED.
- B) ALL CONDUIT FOR SOUND SYSTEM SPEAKERS TO BE 3/4" CMT.
- 22) JUNCTION BOX FOR FUTURE COMMUNICATIONS BETWEEN SCOREBOARD TABLE & THE OFFICIALS ROOM. MOUNT AT 48" AFF AND PROVIDE A BLANK COVERPLATE.

I hereby certify that this plan, specification, or report was prepared by me or under my direct supervision and that I am a duly Registered Professional Engineer under the laws of the State of Minnesota.
D. Lane Hersey
Date: 7-12-88 Reg. No. 12418



KEY PLAN
NATIONAL HOCKEY CENTER
ST. CLOUD STATE UNIVERSITY
ST. CLOUD, MINNESOTA

Ellerbe

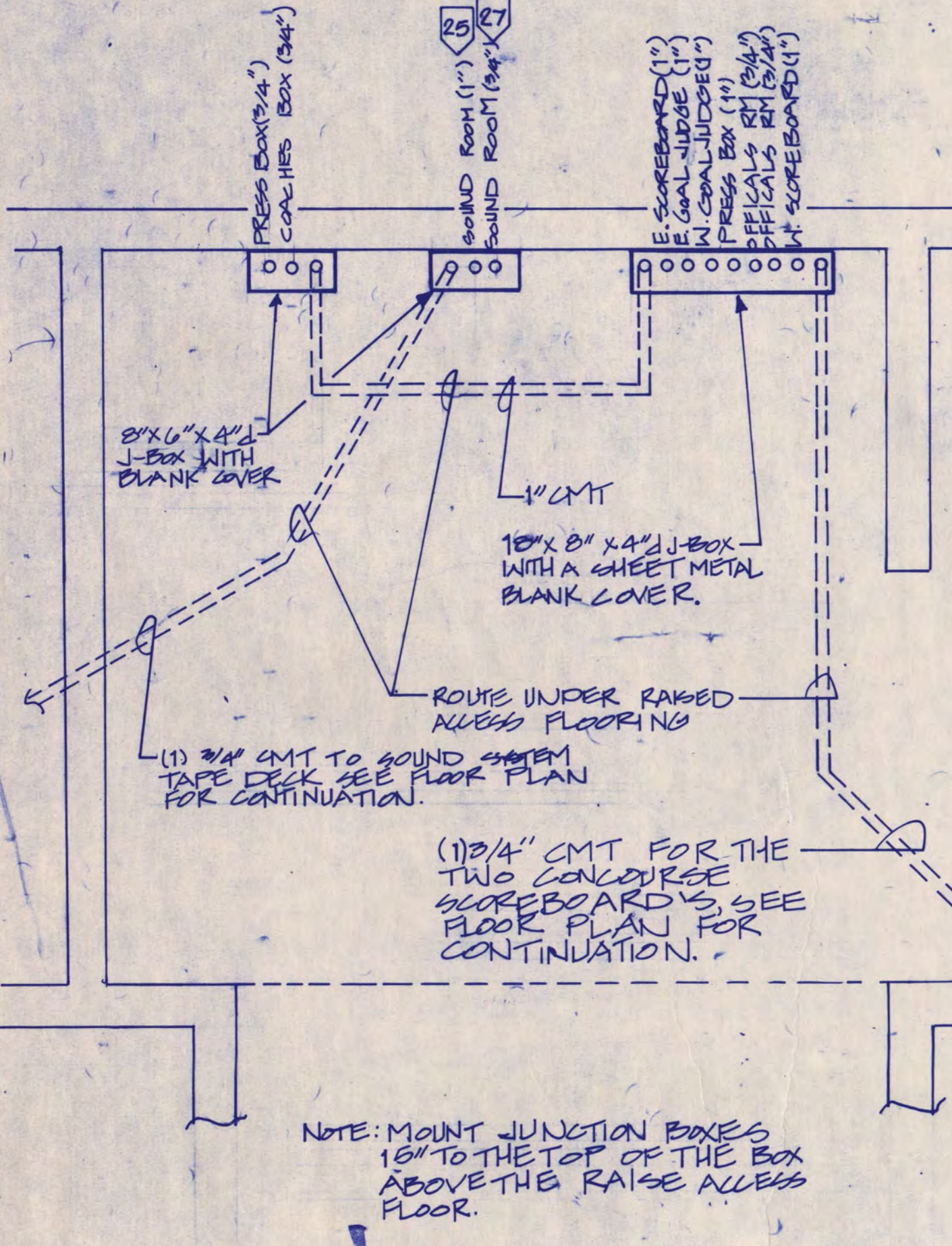
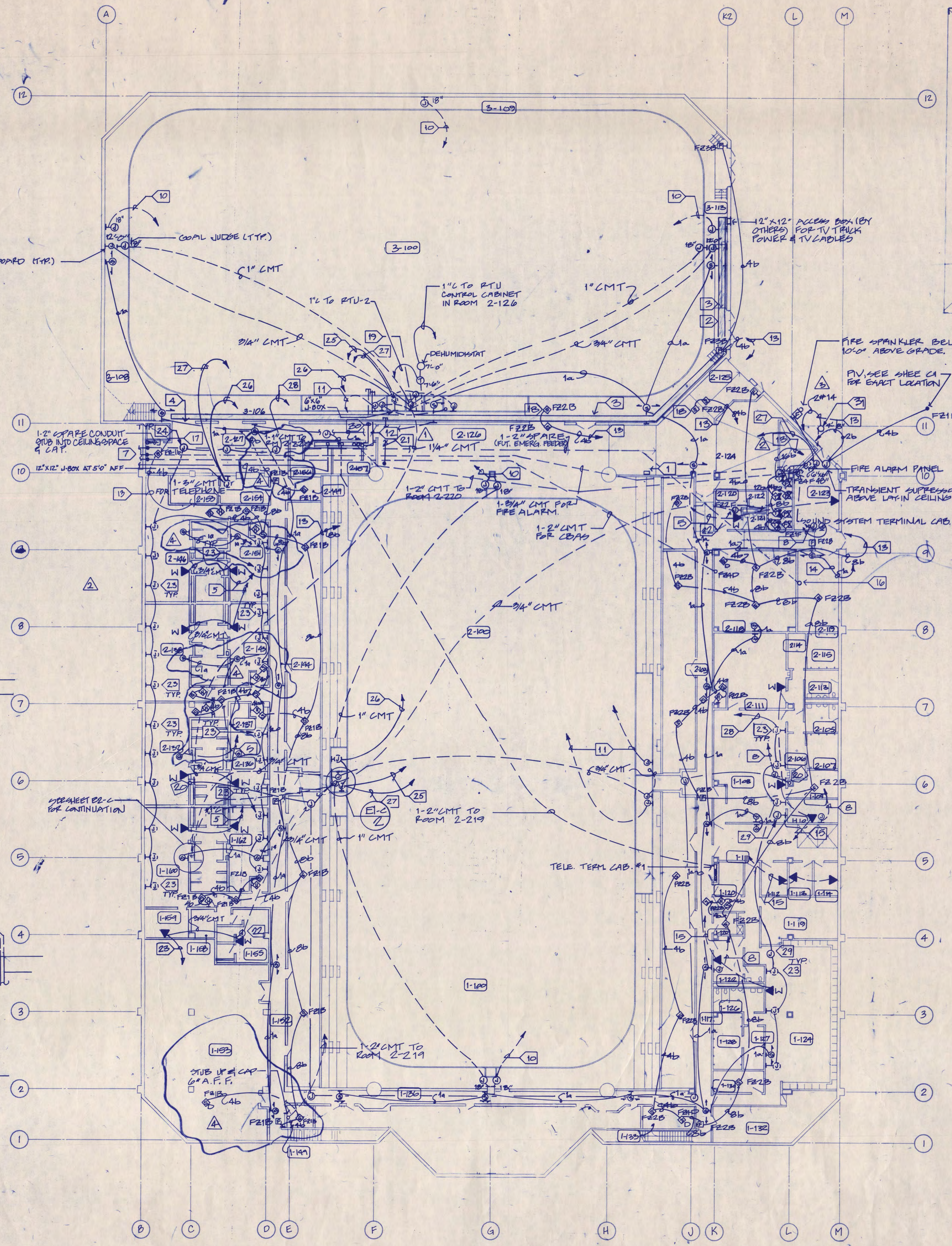
One Appletree Square
Minneapolis, MN 55425
(612) 853-2000
© Ellerbe 1988

BASEMENT LEVEL COMMUNICATIONS PLAN

Scale: 1/4" = 1'-0"

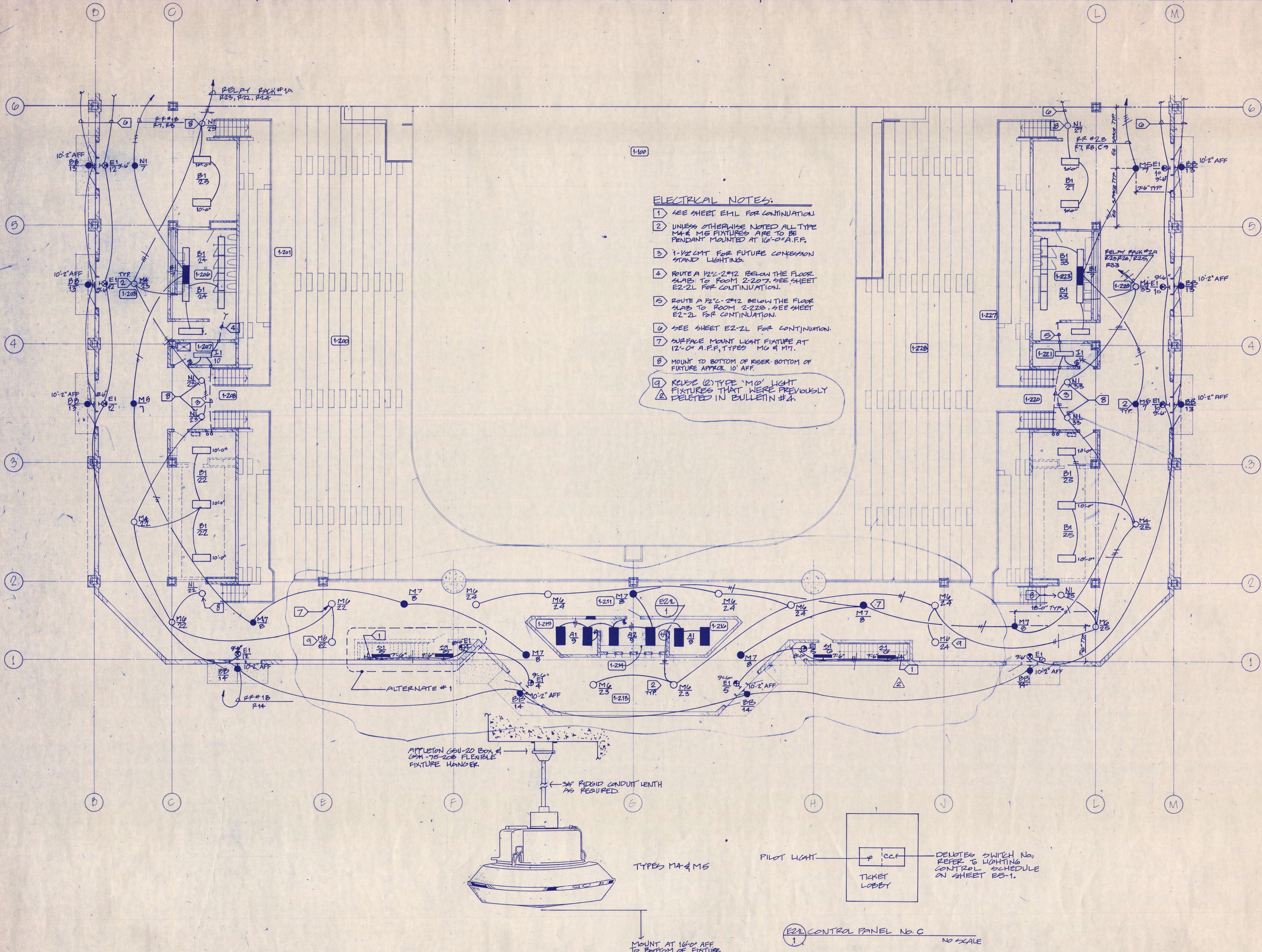
Date: SEPT. 9, 1988 Comm. No. 876-871
In Charge: D.L. HERSEY
Drawn By: J. WOODWARD
Checked By: J. WOODWARD

E1-C



E1-C PARTIAL PLAN - SCOREBOARD
No SCALE

C	1
A	101
M	
E	
S	
I	

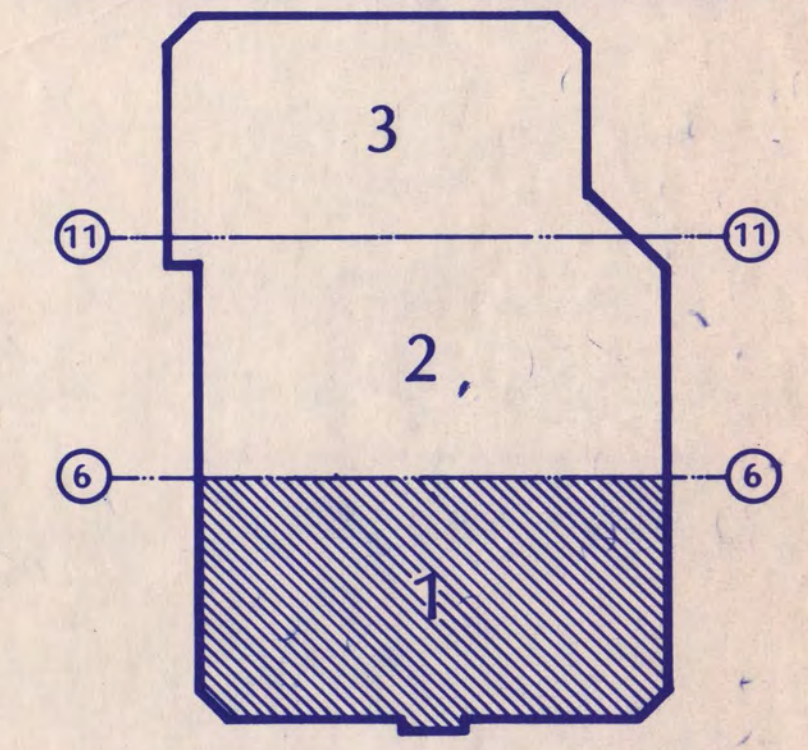


- ELECTRICAL NOTES:**
- 1 SEE SHEET E1L FOR CONTINUATION
 - 2 UNLESS OTHERWISE NOTED ALL TYPE MA & ME FIXTURES ARE TO BE PENDANT MOUNTED AT 10'-0" A.F.F.
 - 3 1-1/2" CMT FOR FUTURE CONCESSION STAND LIGHTING.
 - 4 ROUTE A 1/2" x 2" x 1/2" BELOW THE FLOOR SLAB TO ROOM 2-207. SEE SHEET E2-2L FOR CONTINUATION.
 - 5 ROUTE A 1/2" x 2" x 1/2" BELOW THE FLOOR SLAB TO ROOM 2-228. SEE SHEET E2-2L FOR CONTINUATION.
 - 6 SEE SHEET E2-2L FOR CONTINUATION.
 - 7 SURFACE MOUNT LIGHT FIXTURE AT 12'-0" A.F.F. TYPED M6 & M7.
 - 8 MOUNT TO BOTTOM OF RISER. BOTTOM OF FIXTURE APPROX. 10' AFF.
 - 9 REMOVE (2) TYPE 'M6' LIGHT FIXTURES THAT WERE PREVIOUSLY DELETED IN BULLETIN #4.

E21L FIXTURE MOUNTING DETAIL AREAS 2 & 3
 NO SCALE

E21L CONTROL PANEL NO. C
 NO SCALE

I hereby certify that this plan, specification, or report was prepared by me or under my direct supervision and that I am a duly Registered Professional Engineer under the laws of the State of Minnesota.
D. Lane Hersey
 Date 7-12-88 Reg. No. 12418



KEY PLAN
NATIONAL HOCKEY CENTER

ST. CLOUD STATE UNIVERSITY
 ST. CLOUD, MINNESOTA

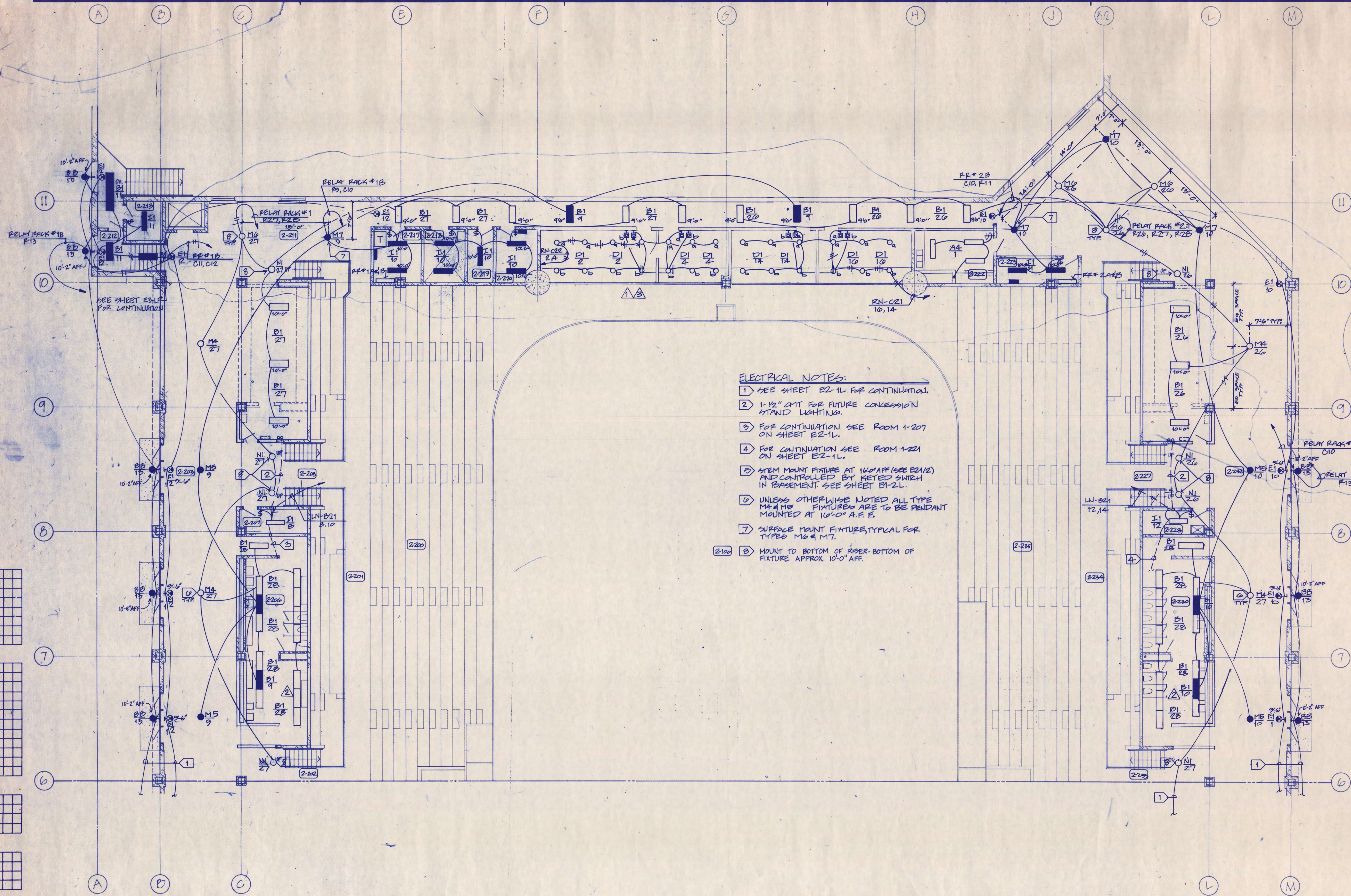
Ellerbe

One Appletree Square
 Minneapolis, MN 55425
 (612) 853-2000
 © Ellerbe 1988

CONCOURSE LEVEL
 LIGHTING PLAN AREA 1

Scale 1/8" = 1'-0"
 Date SEPT. 9, 1988 Comm. No. E106-871
 In Charge D.L. HERSEY
 Drawn By S. WOODWARD
 Checked By J. KIRCHNER
E2-1L

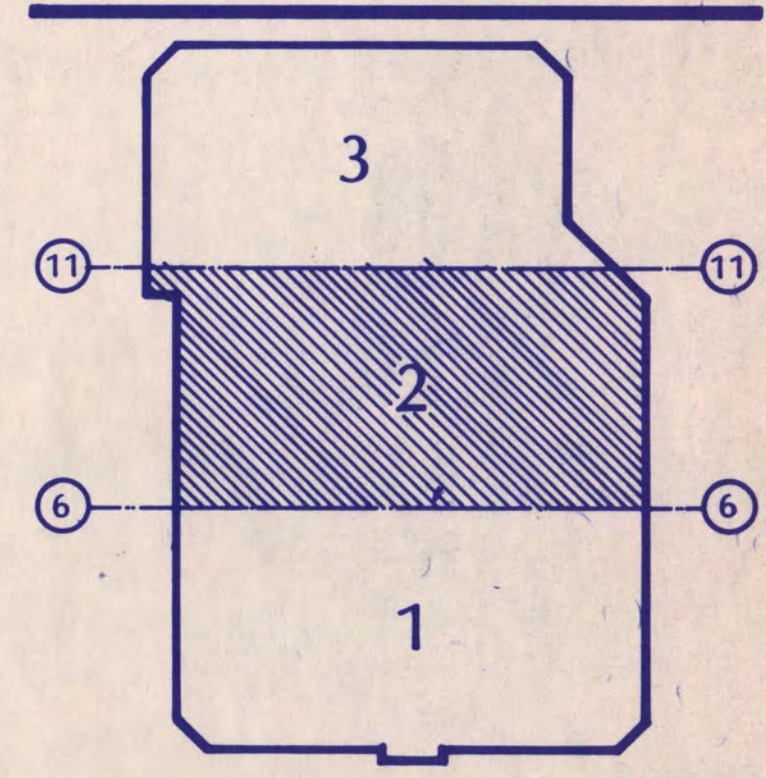
Revision	Date	No.
DD REVIEW ISSUE	6-8-88	
C.D. REVIEW ISSUE	7-12-88	
ISSUED FOR BIDDING	9-9-88	
BULLETIN NO. 1	8-10-89	Δ
BULLETIN NO. 2	8-10-89	Δ
BULLETIN NO. 4	6-30-89	Δ



- ELECTRICAL NOTES:**
- 1 SEE SHEET E2-1L FOR CONTINUATION.
 - 2 1-1/2" GWT FOR FUTURE CONVERSION STAND LIGHTING.
 - 3 FOR CONTINUATION SEE ROOM 1-207 ON SHEET E2-1L.
 - 4 FOR CONTINUATION SEE ROOM 1-221 ON SHEET E2-1L.
 - 5 STEM MOUNT FIXTURE AT 16'-0" AFF (SEE E2-1/2) AND CONTROLLED BY KIEED SWITCH IN BASEMENT SEE SHEET E1-2L.
 - 6 UNLESS OTHERWISE NOTED ALL TYPE M4 & M5 FIXTURES ARE TO BE PENDANT MOUNTED AT 10'-0" A.F.F.
 - 7 SURFACE MOUNT FIXTURE TYPICAL FOR TYPES M6 & M7.
 - 8 MOUNT TO BOTTOM OF RISER BOTTOM OF FIXTURE APPROX. 10'-0" AFF.

I hereby certify that this plan, specification, or report was prepared by me or under my direct supervision and that I am a duly Registered Professional Engineer under the laws of the State of Minnesota.

D. Lane Hersey
Date 7-12-88 Reg. No. 12418



KEY PLAN
NATIONAL HOCKEY CENTER

ST. CLOUD STATE UNIVERSITY
ST. CLOUD, MINNESOTA

Ellerbe

One Appletree Square
Minneapolis, MN 55425
(612) 853-2000
•Ellerbe M56

CONCOURSE LEVEL
LIGHTING PLAN AREA 2

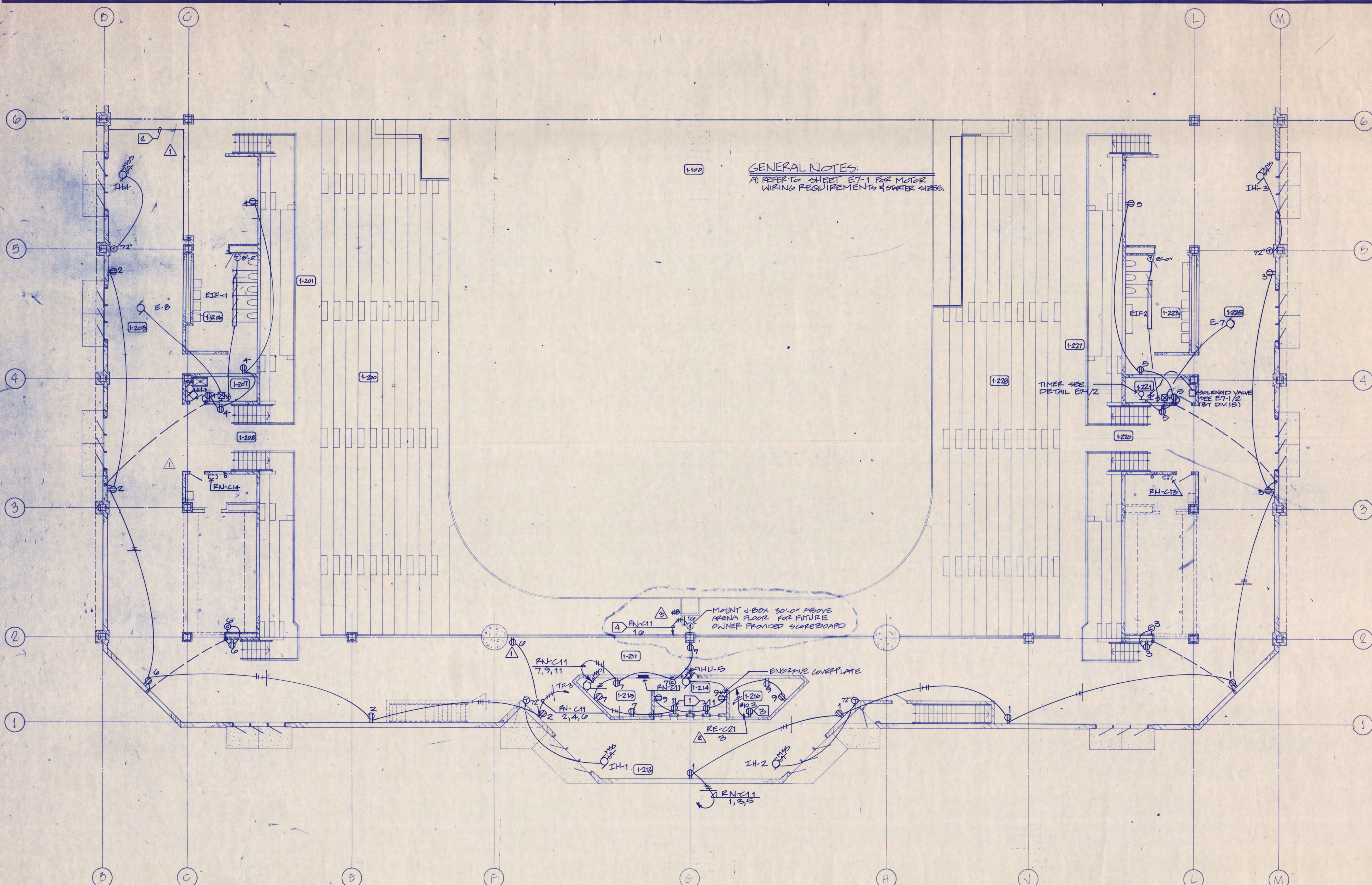
Scale 1/8" = 1'-0"

Date 9/19/88 Comm. No. 5766-B71
In Charge *D. L. HERSEY*
Drawn By *S. WOODWARD*
Checked By *J. KIRCHNER*

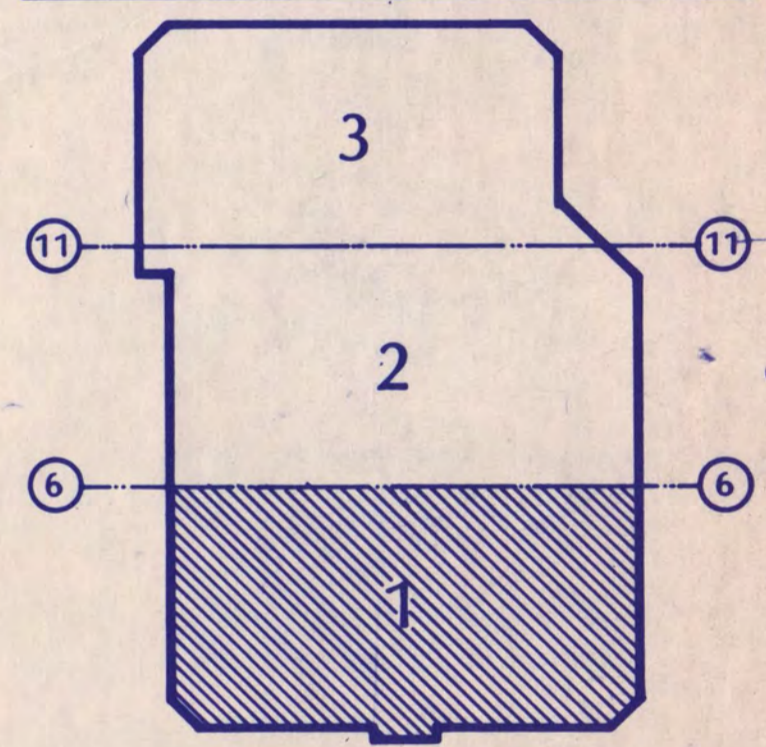
E2-2L

Revision	Date	No.
DD REVIEW ISSUE	0-8-88	
CD REVIEW ISSUE	7-12-88	
ISSUED FOR BIDDING	9-9-88	
BULLETIN No. 1	8-10-89	Δ
BULLETIN No. 5	7/25/89	Δ
BULLETIN No. 6	9/15/89	Δ

GENERAL NOTES:
 A) REFER TO SHEET E7-1 FOR MOTOR WIRING REQUIREMENTS & STARTER SIZES.



I hereby certify that this plan, specification or report was prepared by me or under my direct supervision and that I am a duly Registered Professional Engineer under the laws of the State of Minnesota.
D. Lane Hersey
 Date 7-12-88 Reg. No. 12418



KEY PLAN
NATIONAL HOCKEY CENTER
 ST. CLOUD STATE UNIVERSITY
 ST. CLOUD, MINNESOTA

Ellerbe
 One Appletree Square
 Minneapolis, MN 55425
 (612) 853-2000
 © Ellerbe 1988

- ELECTRICAL NOTES:**
- 1 MOUNT RECEPTACLE HORIZONTALLY 6" ABOVE COUNTER TOP.
 - 2 ROUTE 2 1/2" CNT UP TO RNC-62 IN PRESS BOXES SHEET E7-1 FROM THE EXISTING 100% 61-101 RATE CONDUIT AS DETAILED IN DETAIL E7-1/T.
 - 3 PROVIDE AN ISOLATED GROUND RECEPTACLE FOR SOUND SYSTEM RACK.
 - 4 ROUTE THE CIRCUIT THROUGH ENCLOSED CONTROL RELAY. MOUNT THE RELAY ABOVE THE CEILING NEAR THE PANEL IN THE TRICK OFFICE. ROUTE THE CONTROL WIRING IN CONDUIT TO SWITCHES IN CONTROL PANEL X-Y LOCATED IN ROOM # 2-120. MATCH TYPE, QUALITY AND MANUFACTURER OF EXISTING LIGHTING CONTROL RELAYS.

CONCOURSE LEVEL
 POWER PLAN AREA 1

Scale 1/8" = 1'-0"
 Date SEPT. 31 1988 Comm. No. 8166 871
 In Charge *DL HERSEY*
 Drawn By *WOODWARD*
 Checked By *KIRCHNER*

E2-1P