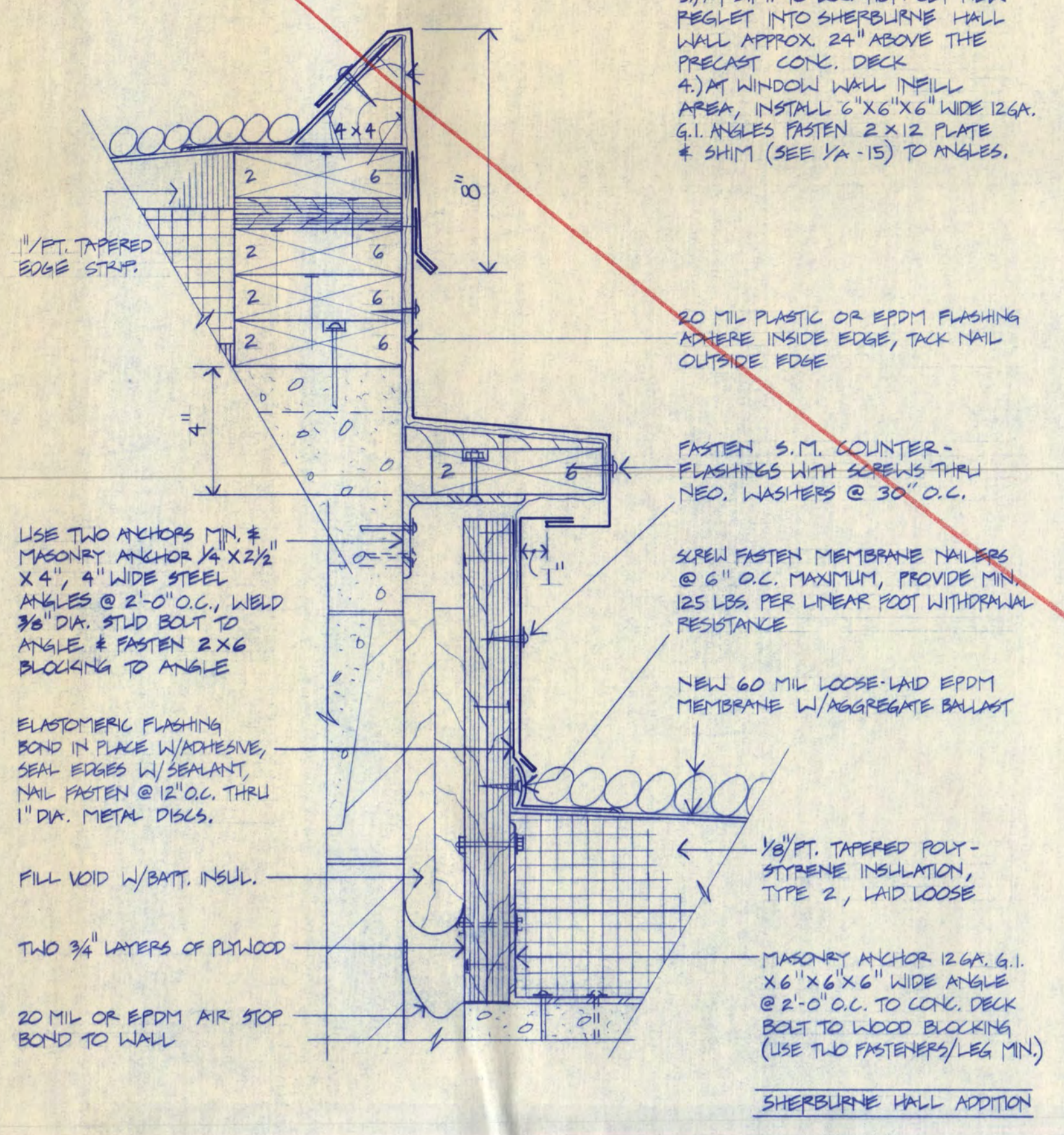


NOTE: SEE DETAIL 1/8 FOR ROOF EDGE NOTATION

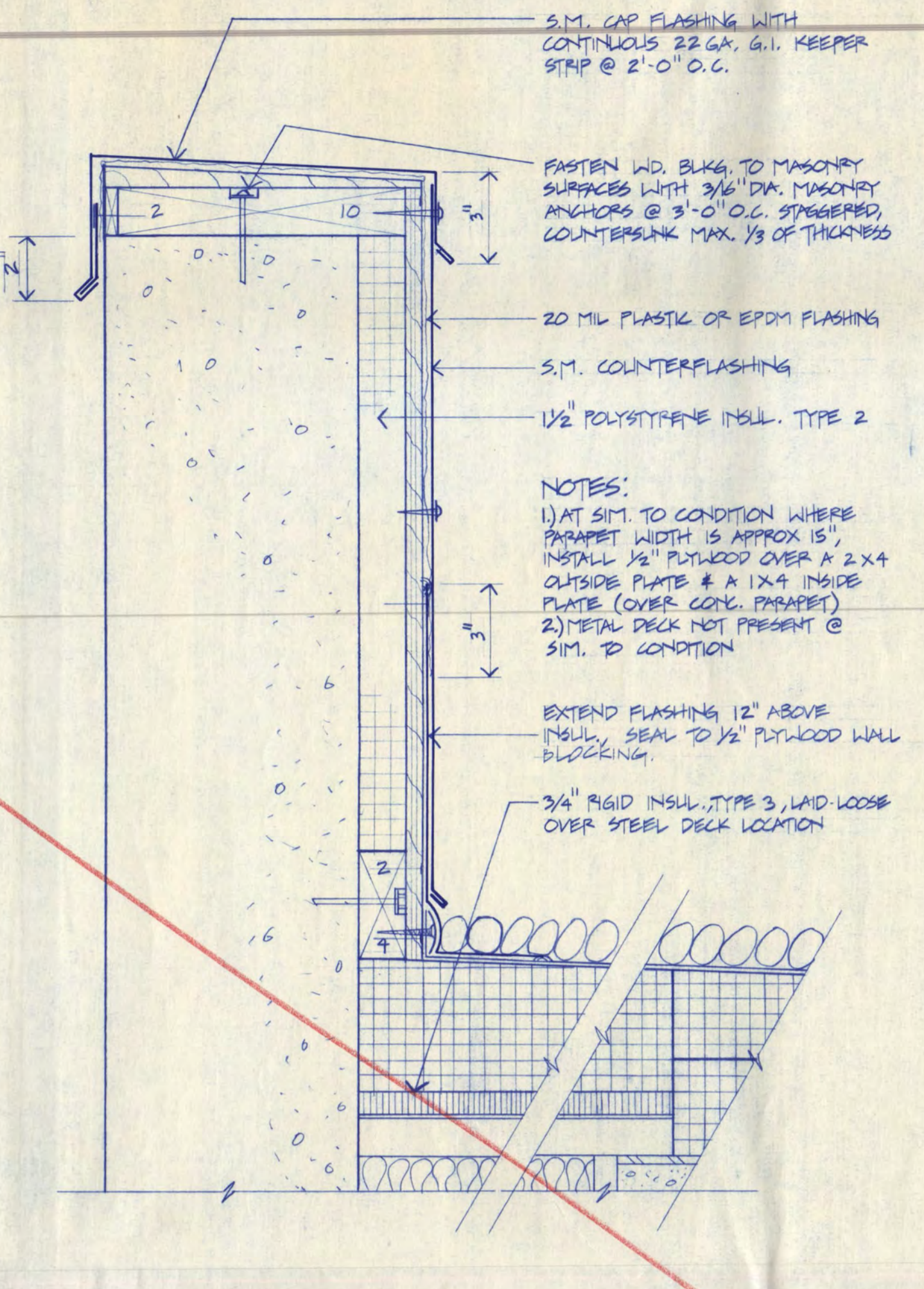
GARVEY COMMONS ADDITION



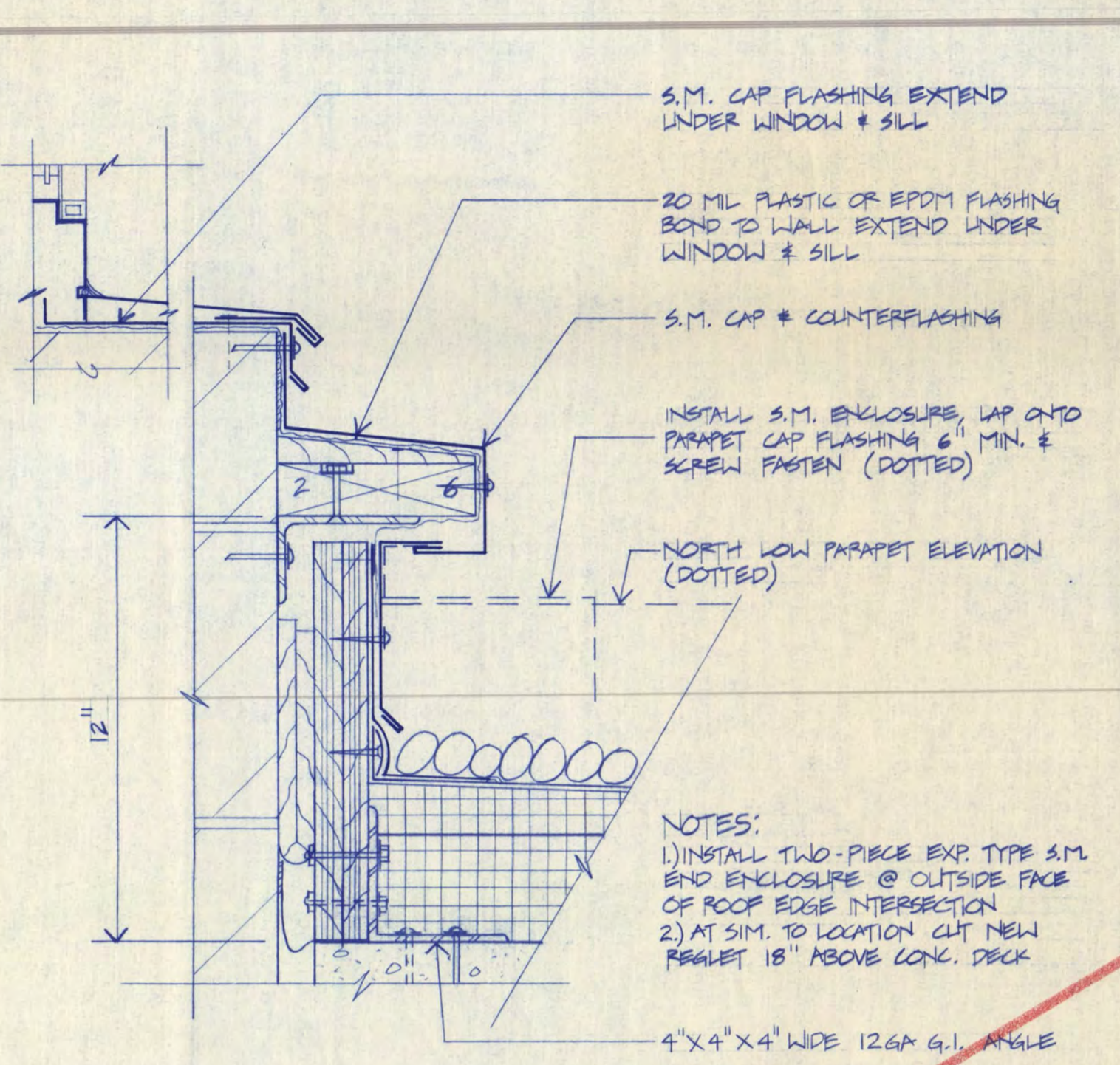
1 WALL EXPANSION JOINT DETAIL
A-7 SCALE: 3"=1'-0"

NOTES:

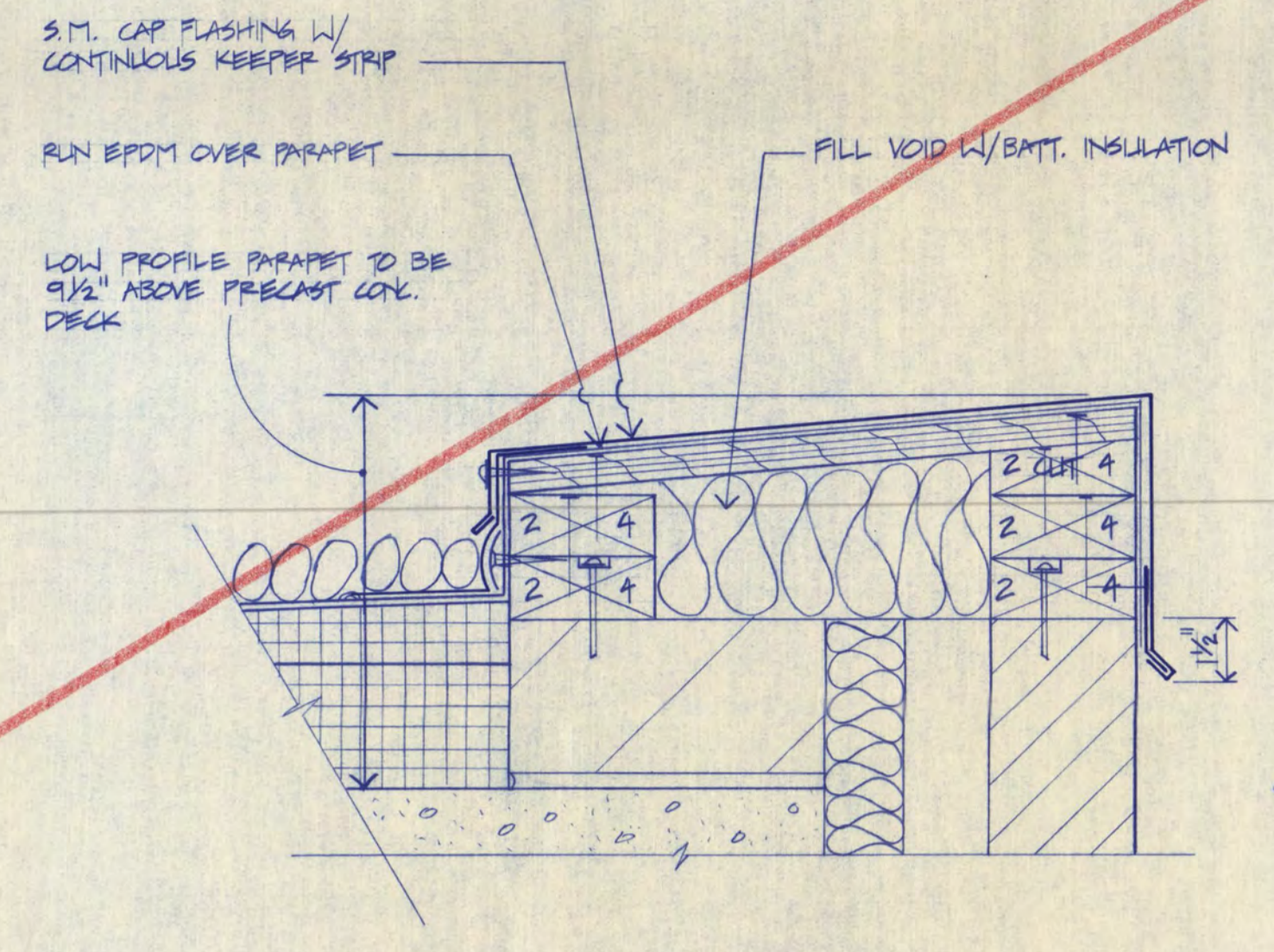
- 1) AT INTERSECTION TO PARAPET PROVIDE A TWO PIECE S.M. EXP. TYPE END ENCLOSURE
- 2) ALL SHEET METAL SHOWN IS TO BE 24GA. COLOR COATED G.I. UNLESS OTHERWISE NOTED
- 3) AT SIM TO LOCATION CUT NEW REGLET INTO SHERBURNE HALL WALL APPROX. 24" ABOVE THE PRECAST CONC. DECK
- 4) AT WINDOW WALL INFILL AREA, INSTALL 2" X 6" WIDE 12GA. G.I. ANGLES FASTEN 2" X 12" PLATE & SIM (SEE 1A-15) TO ANGLES.



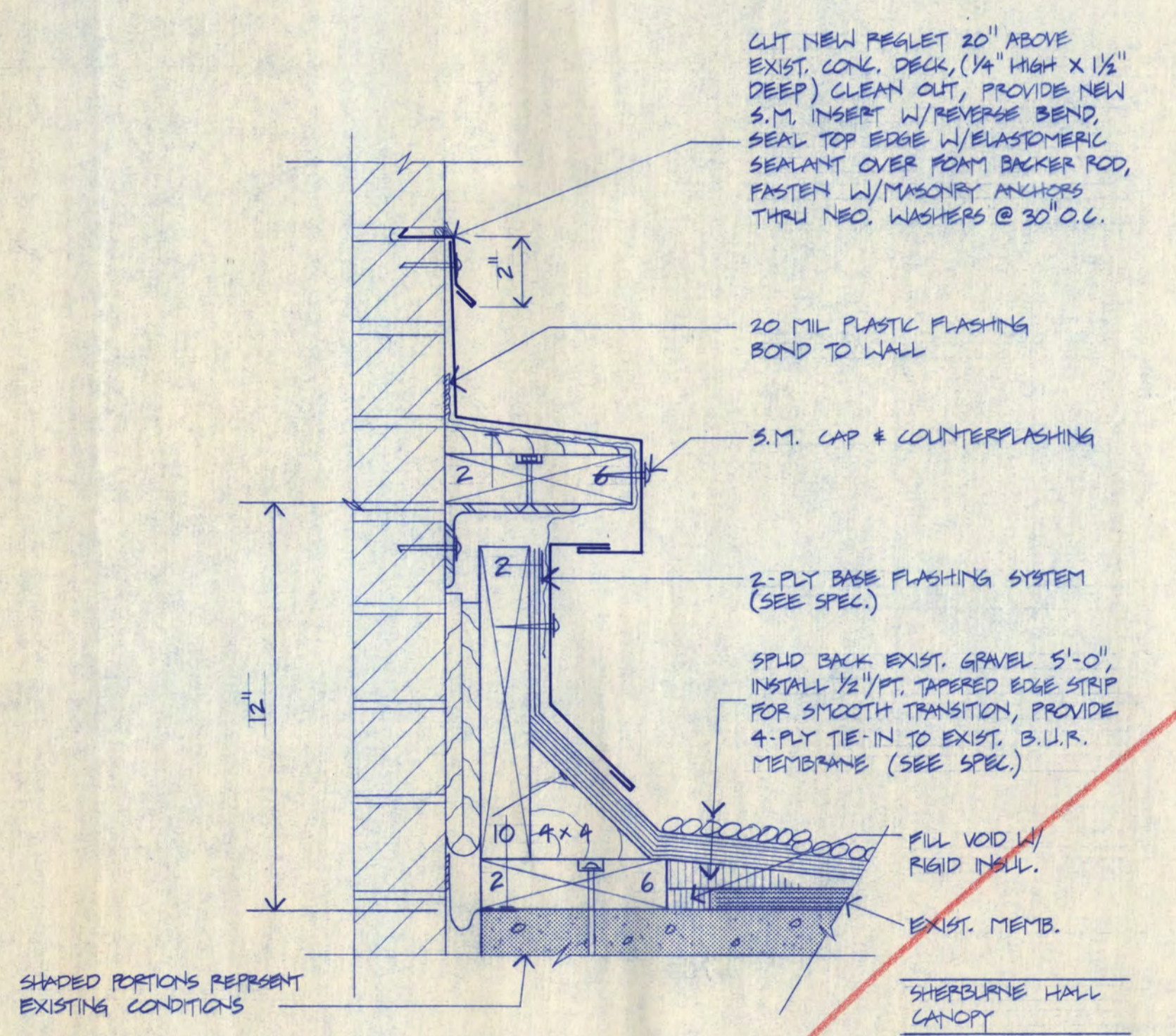
2 PARAPET DETAIL
A-7 SCALE: 3"=1'-0"



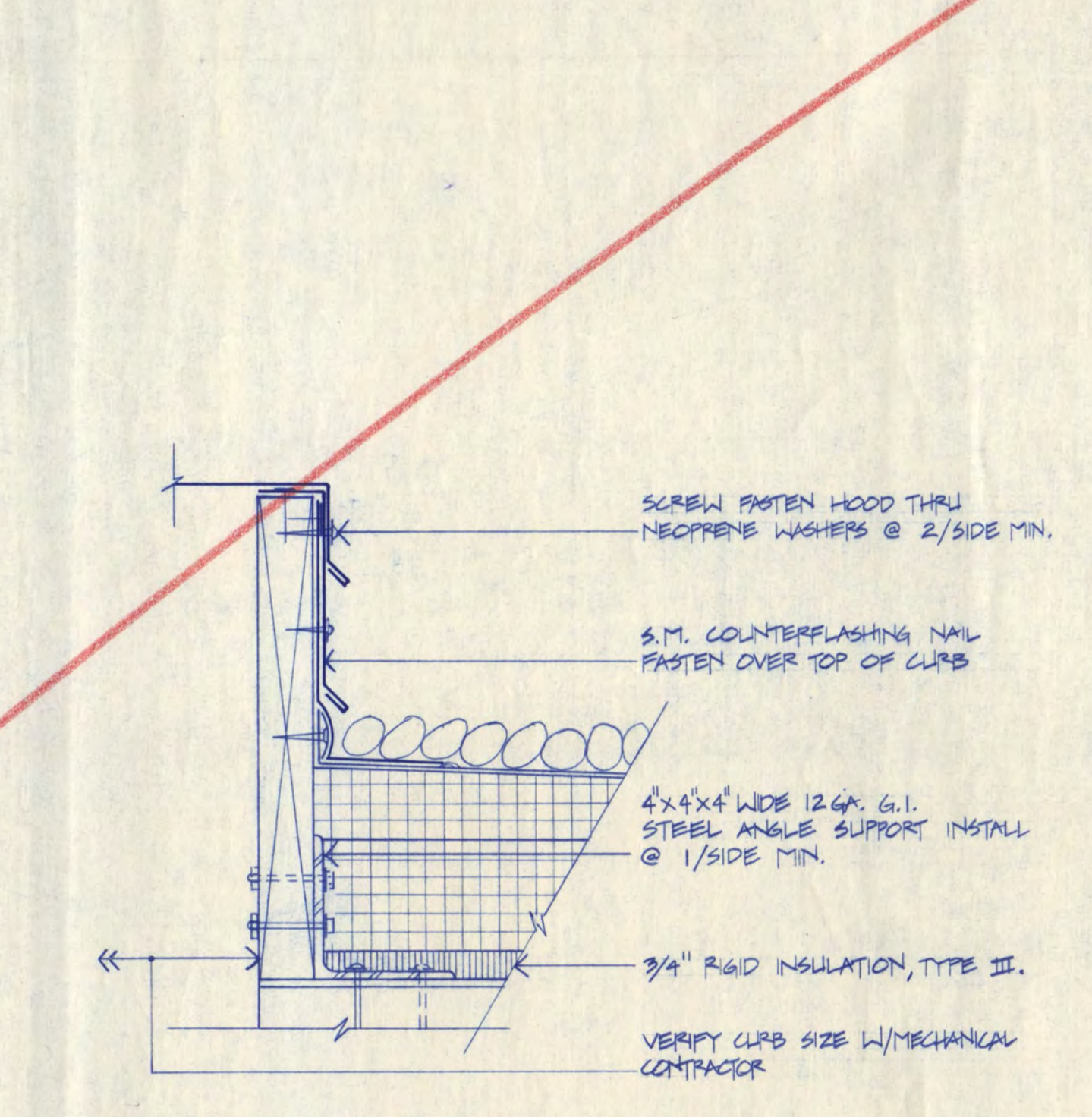
3 WINDOW WALL EXP. JT. DETAIL
A-7 SCALE: 3"=1'-0"



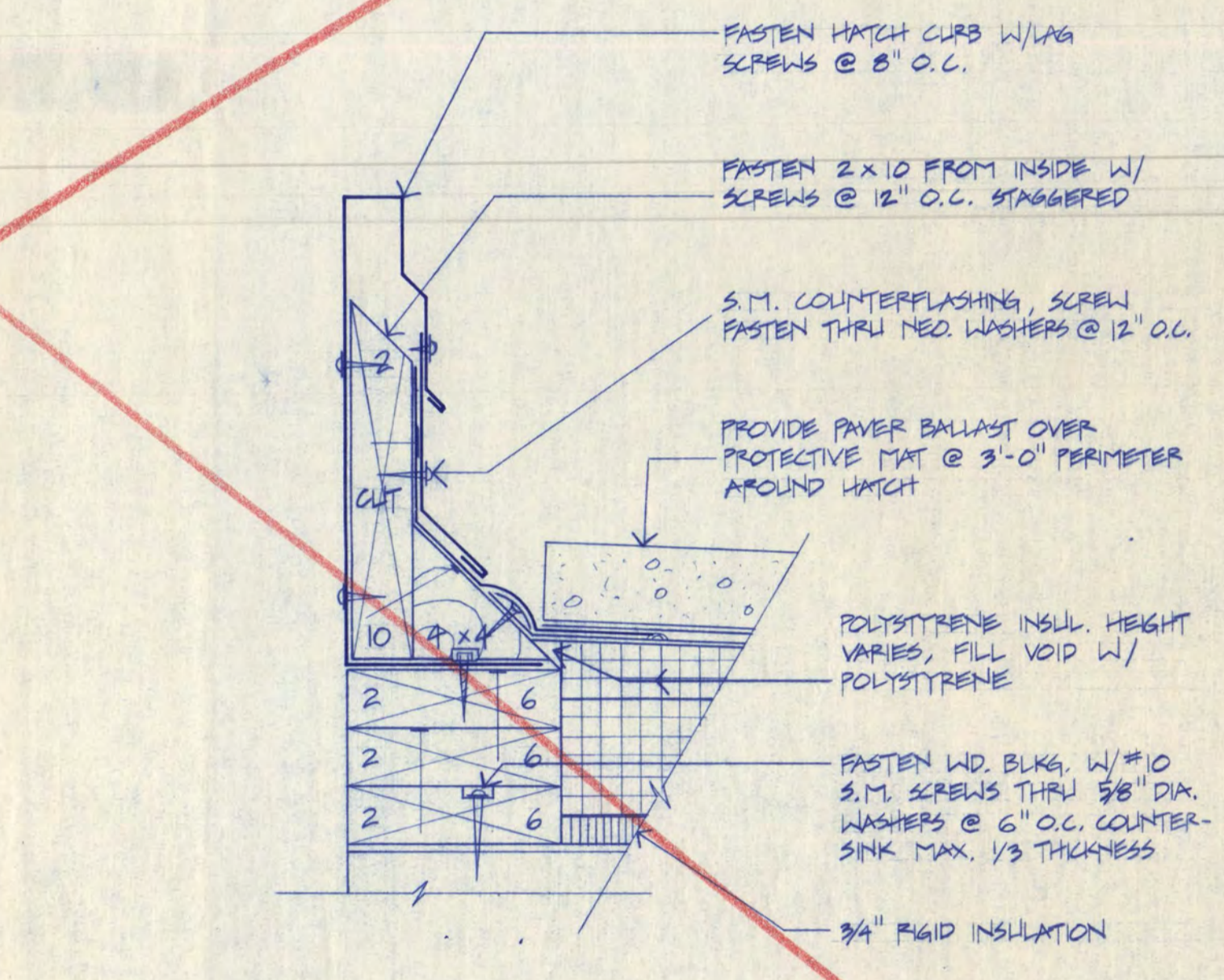
4 LOW PARAPET ROOF EDGE DETAIL
A-7 SCALE: 3"=1'-0"



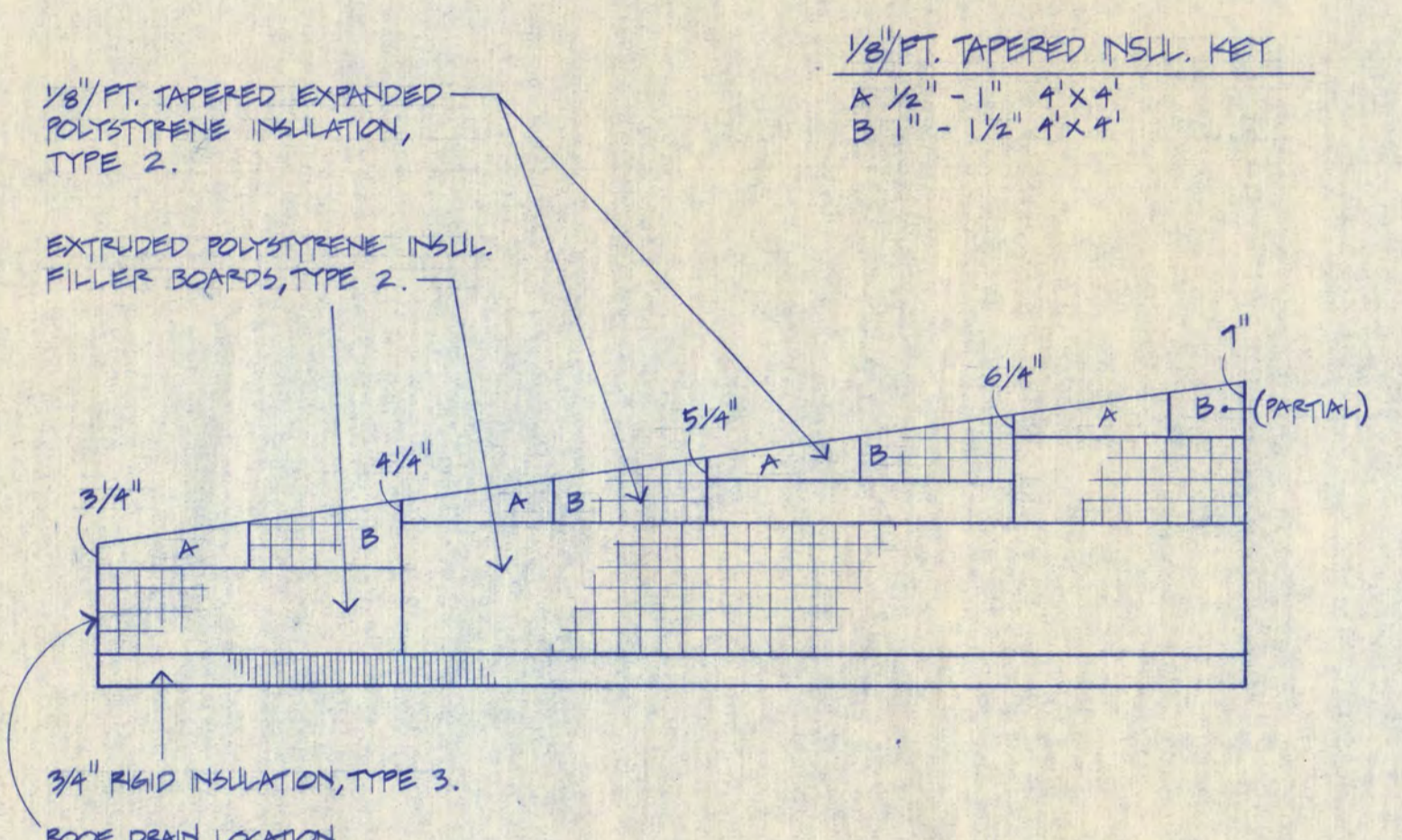
5 WALL EXPANSION JOINT DETAIL
A-7 SCALE: 3"=1'-0"



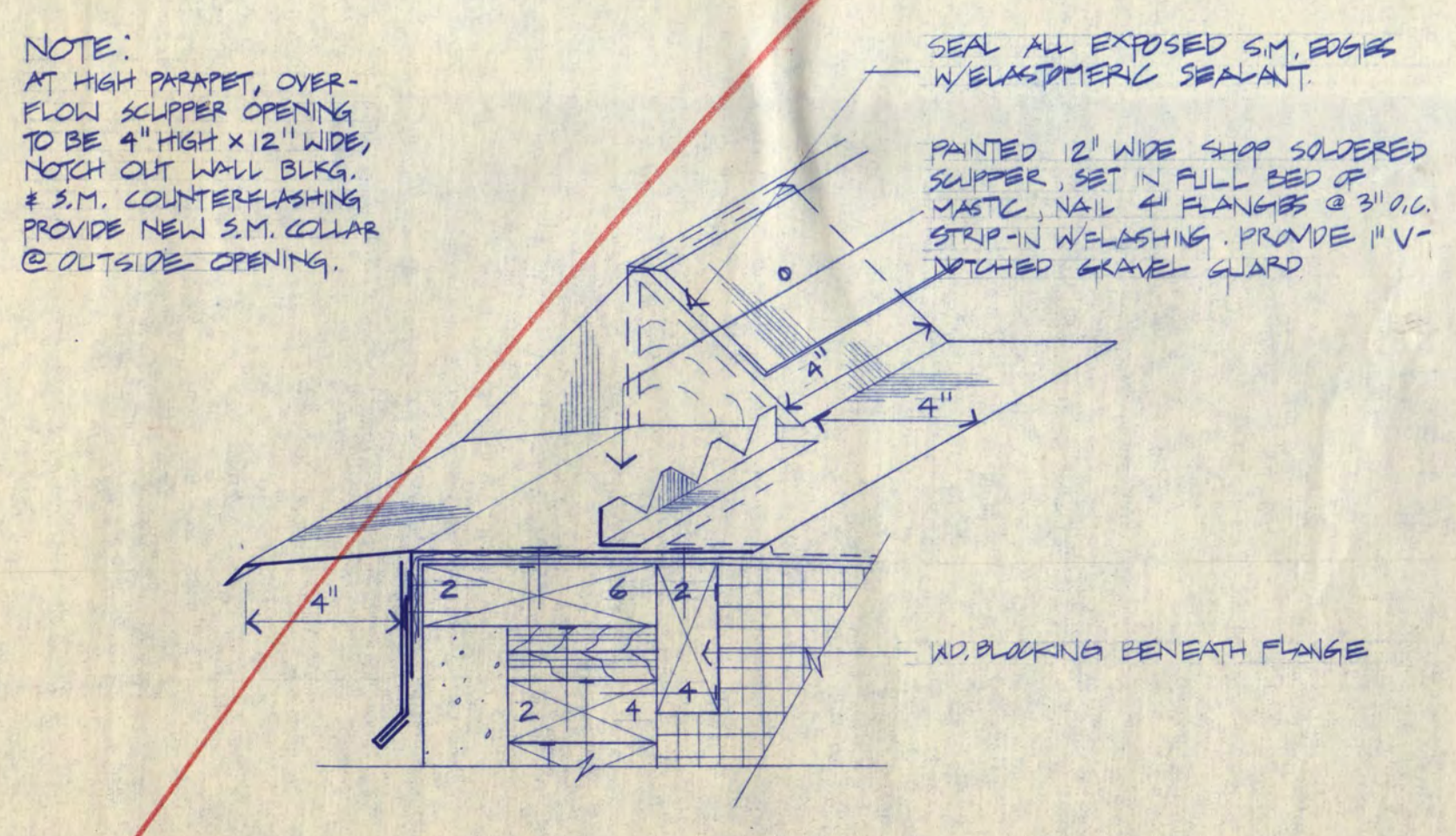
6 MECH UNIT DETAIL
A-7 SCALE: 3"=1'-0"



7 ROOF HATCH DETAIL
A-7 SCALE: 3"=1'-0"



8 TAPERED INSULATION SECTION
A-7 SCALE: 3"=1'-0"



9 OVERFLOW SCUPPER SECTION
A-7 SCALE: 3"=1'-0"

CONSULTING ENGINEERS:
INSPEC, INC.
5616 Olson Memorial Highway
Minneapolis, Minnesota 55422

COPYRIGHT 1986 BY FREDRIC WEMLINGER AND ASSOCIATES, INC. THE CONTENTS OF THIS DOCUMENT ARE FOR THE SOLE AND EXCLUSIVE USE FOR THE PROJECT AND SITE IDENTIFIED HEREON. ANY OTHER USE NOT SPECIFICALLY AUTHORIZED BY THE ARCHITECT ENGINEER IS PROHIBITED.

I HEREBY CERTIFY THAT THIS PLAN SPECIFICATION OR REPORT WAS PREPARED BY ME OR UNDER MY DIRECT SUPERVISION AND THAT I AM DULY REGISTERED ARCHITECT ENGINEER UNDER THE LAWS OF THE STATE OF MINNESOTA.

Dwight D. Berry
DATE 11/15/86 REG. NO. 15580

FREDRIC WEMLINGER AND ASSOCIATES, INC.
ARCHITECTS AND ENGINEERS
SAINT CLOUD, MINNESOTA 56301
TELEPHONE 812-253-2100

GARVEY COMMONS/ SHERBURNE HALL ADDITIONS & REMODELING
ST. CLOUD STATE UNIVERSITY
ST. CLOUD MINNESOTA

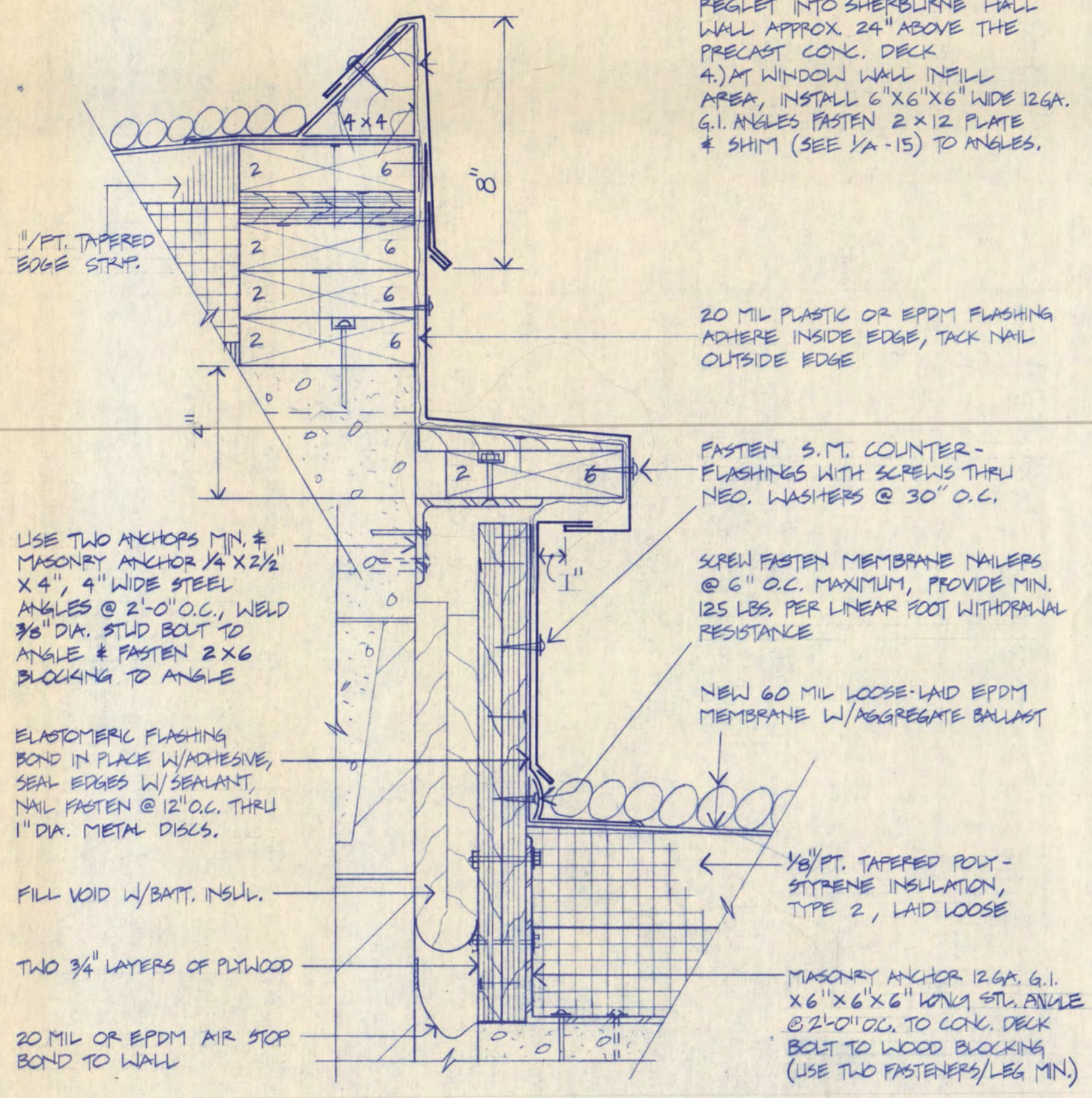
REVISED	PROJECT NO. 86-015
	ISSUE DATE 12/15/86
	DRAWN BY K. WEFMARTER
	CHECKED G.P.
	APPROVED ARCHITECT F.W.
	SCALE AS SHOWN

A-7

VOID - SEE REVISED SHIT.

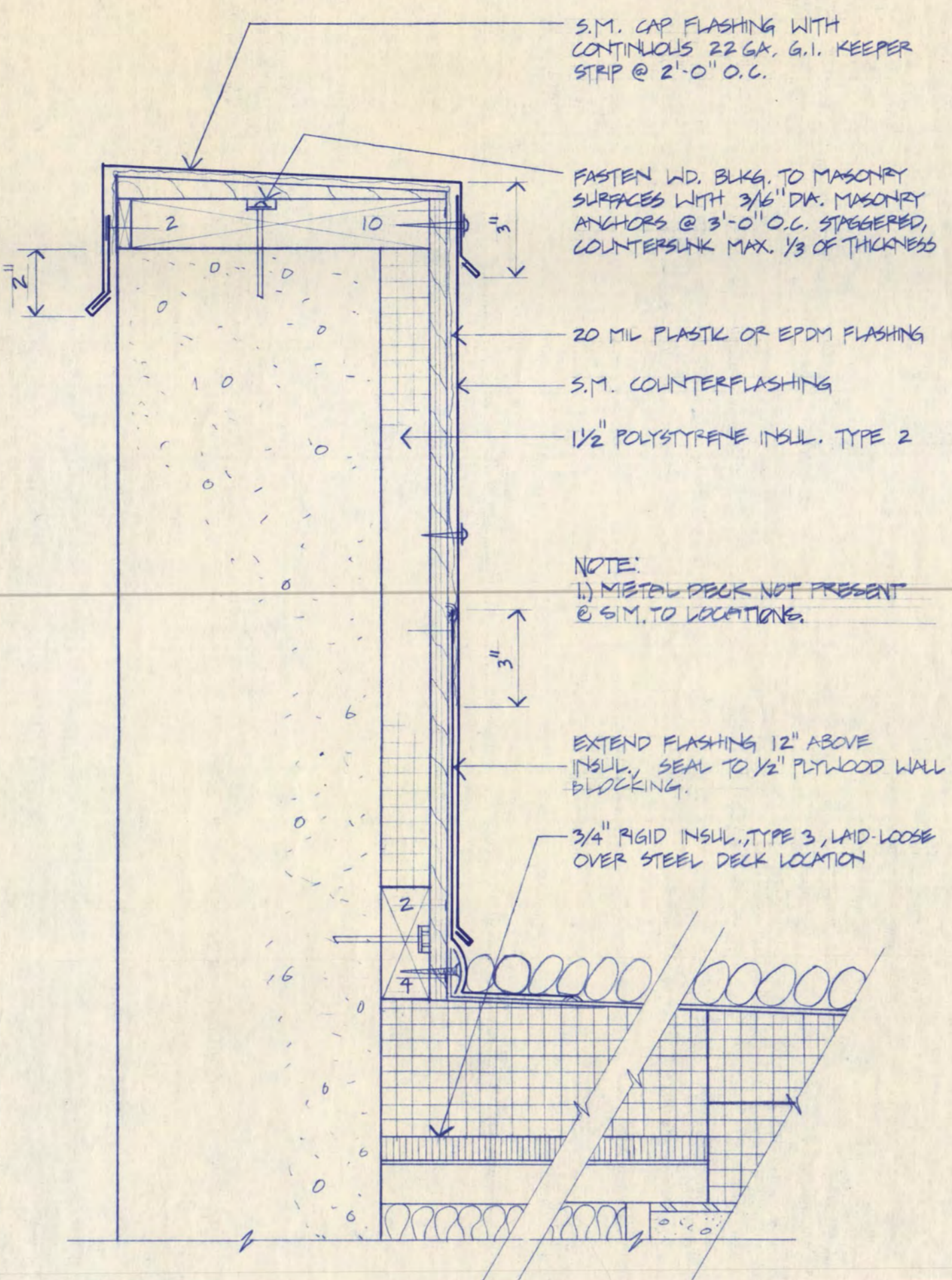
NOTE:
SEE DETAIL 1 FOR ROOF EDGE NOTATION

GARVEY COMMONS ADDITION

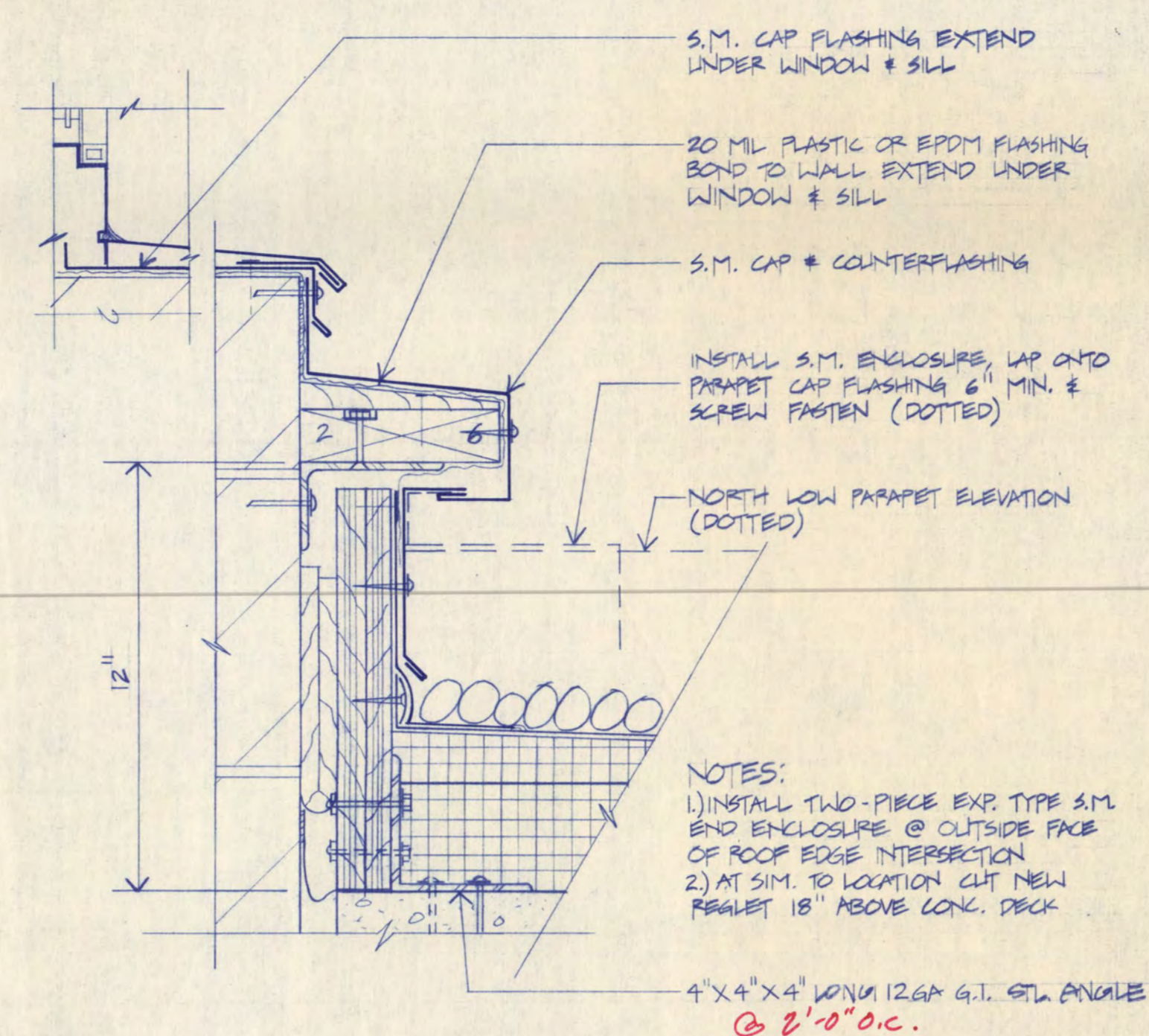


1 WALL EXPANSION JOINT DETAIL
A-7 SCALE: 3"=1'-0"

NOTES:
1) AT INTERSECTION TO PARAPET PROVIDE A TWO PIECE S.M. EXP. TYPE END ENCLOSURE
2) ALL SHEET METAL SHOWN IS TO BE 24GA. COLOR COATED G.I. UNLESS OTHERWISE NOTED
3) AT S.M. TO LOCATION CUT NEW REGLET INTO SHERBURNE HALL WALL APPROX. 24" ABOVE THE PRECAST CONC. DECK
4) AT WINDOW WALL INFILL AREA, INSTALL 6"x6"x6" WIDE 12GA. G.I. ANGLE FASTEN 2"x12 PLATE, # SHIM (SEE 1A-15) TO ANGLES.

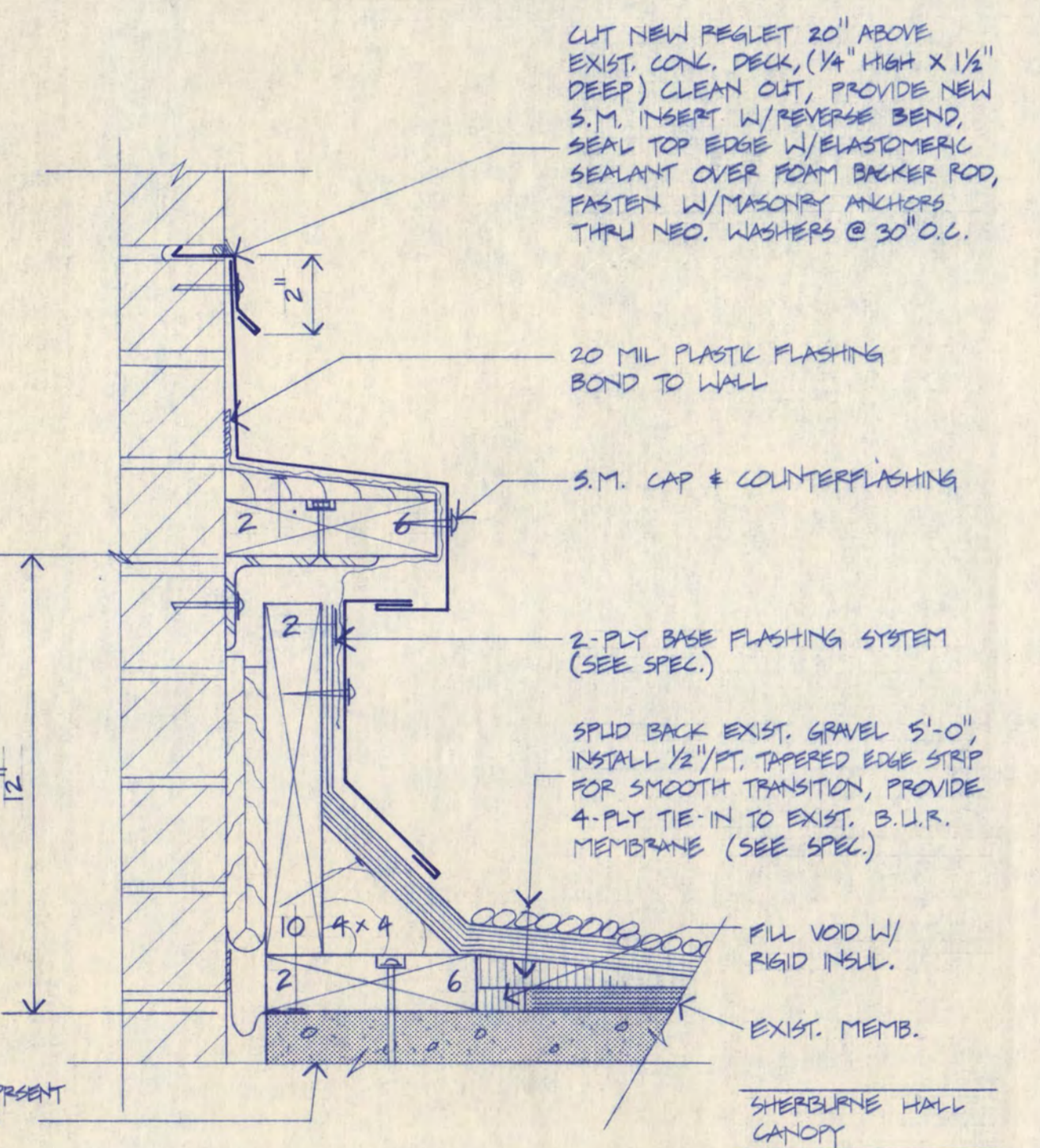


3 WINDOW WALL EXP. JT. DETAIL
A-7 SCALE: 3"=1'-0"



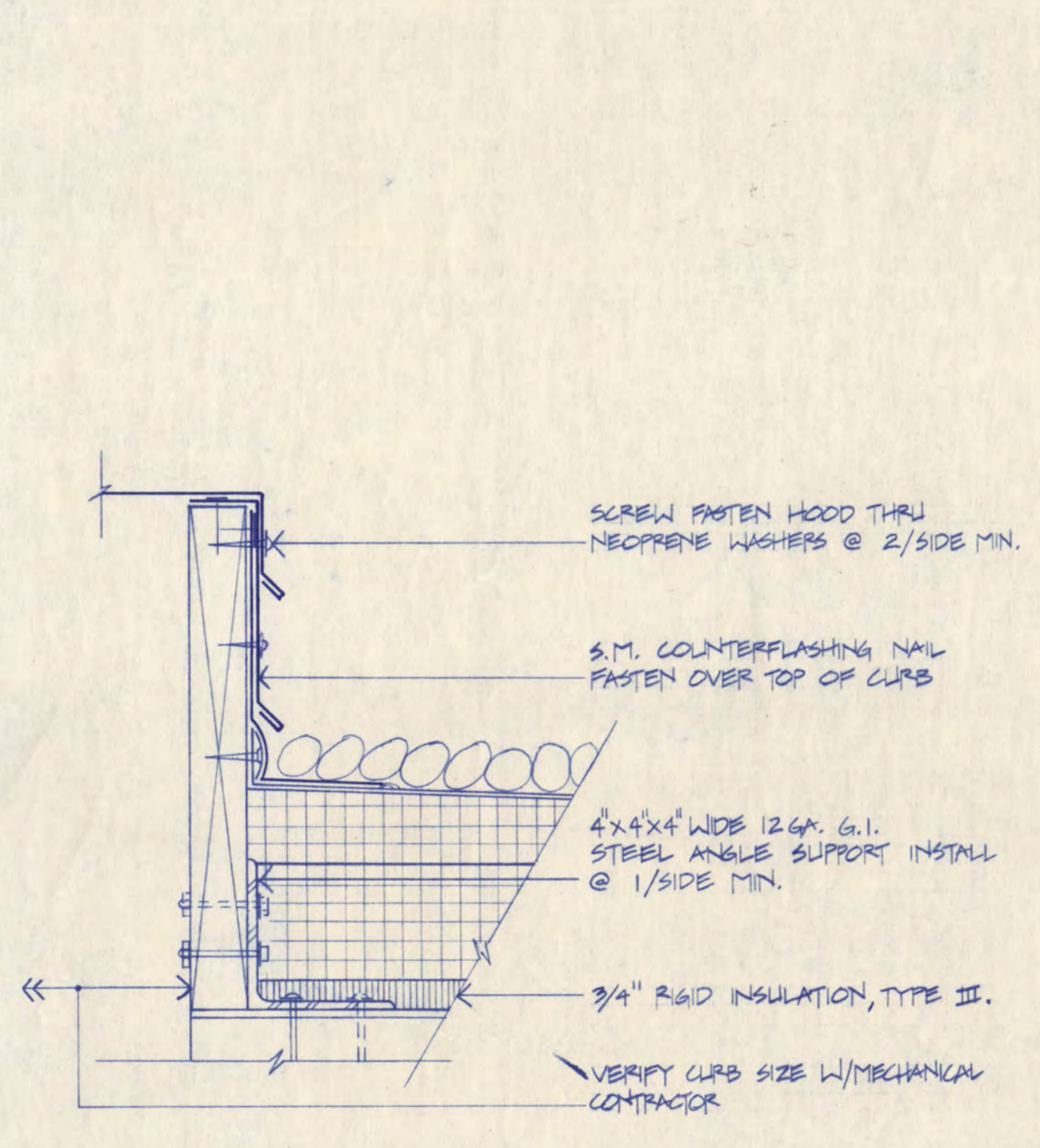
4 LOW PARAPET ROOF EDGE DETAIL
A-7 SCALE: 3"=1'-0"

NOTE:
AT LOW PARAPET TO TOP PARAPET INTERSECTION, COVER PARAPET SIDE W/SHEET METAL

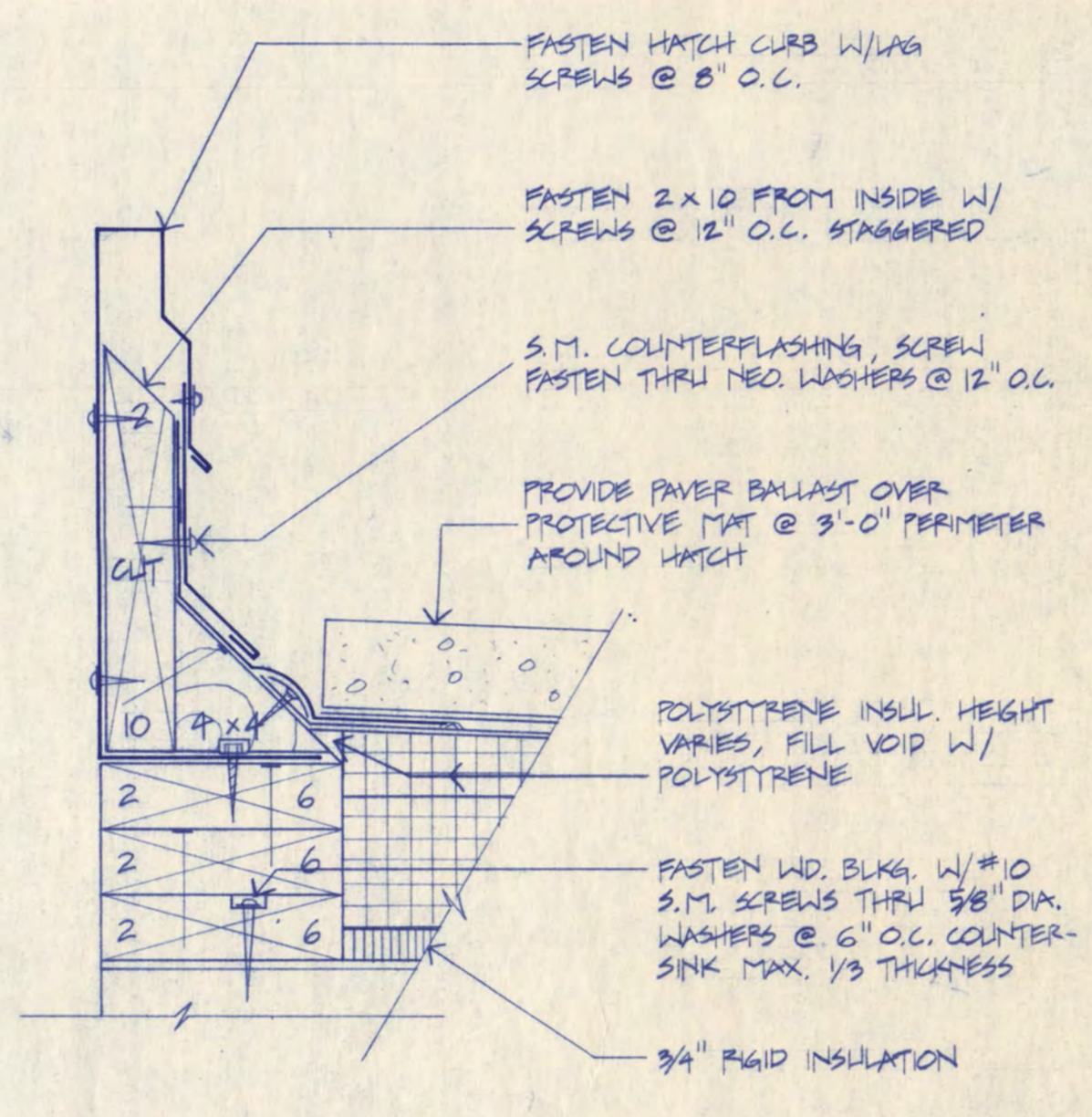


5 WALL EXPANSION JOINT DETAIL
A-7 SCALE: 3"=1'-0"

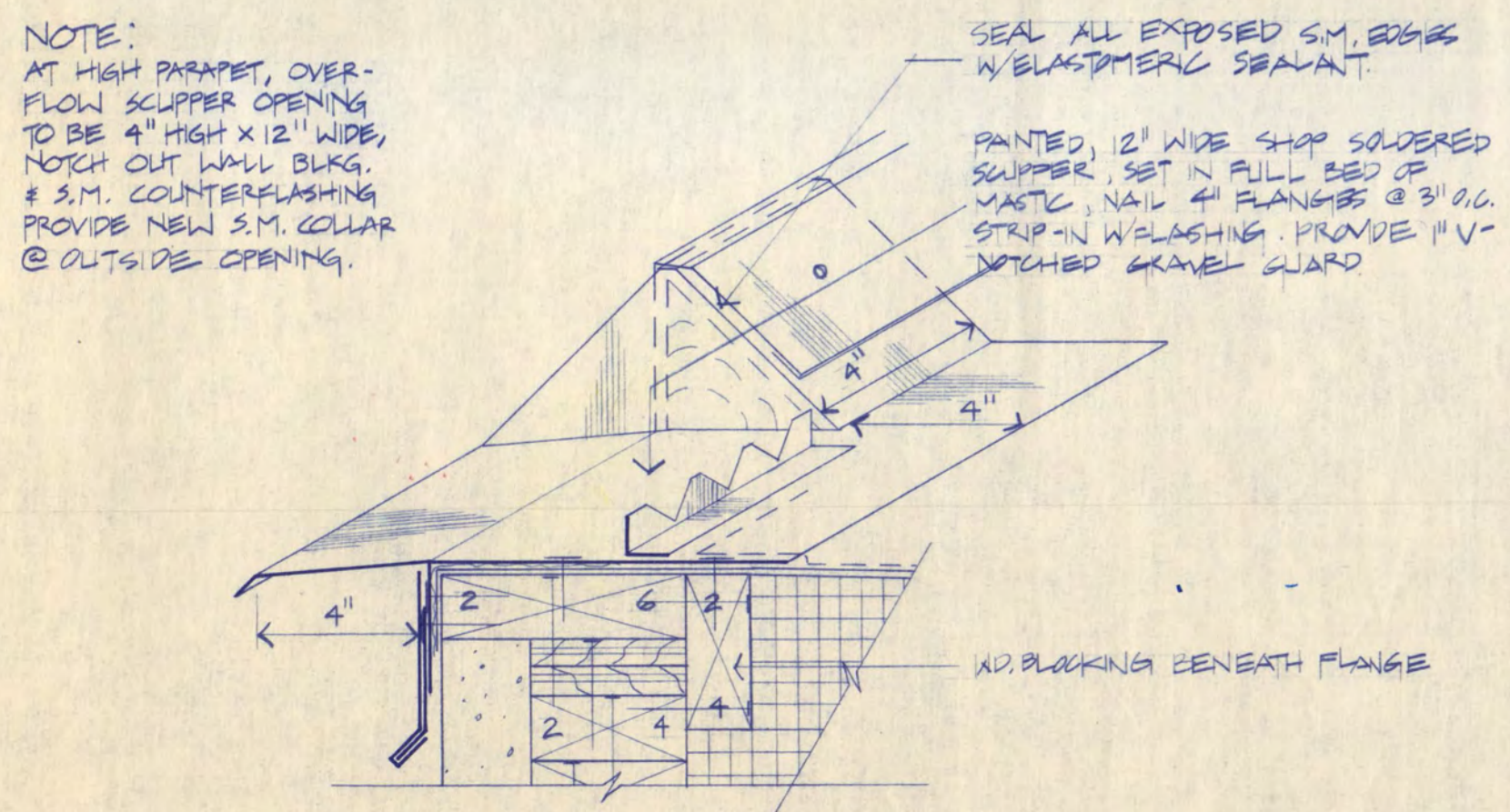
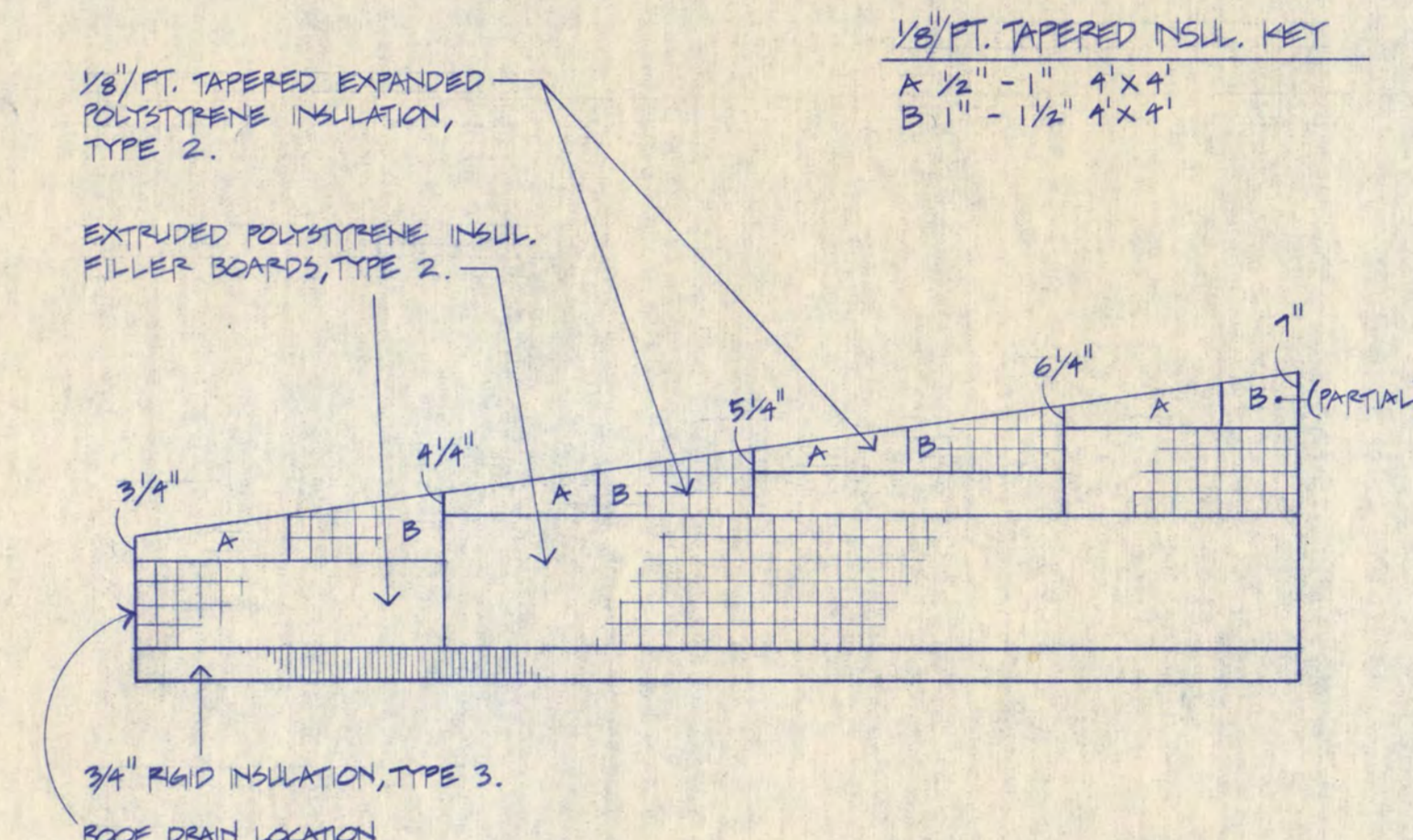
2 PARAPET DETAIL
A-7 SCALE: 3"=1'-0"



7 ROOF HATCH DETAIL
A-7 SCALE: 3"=1'-0"

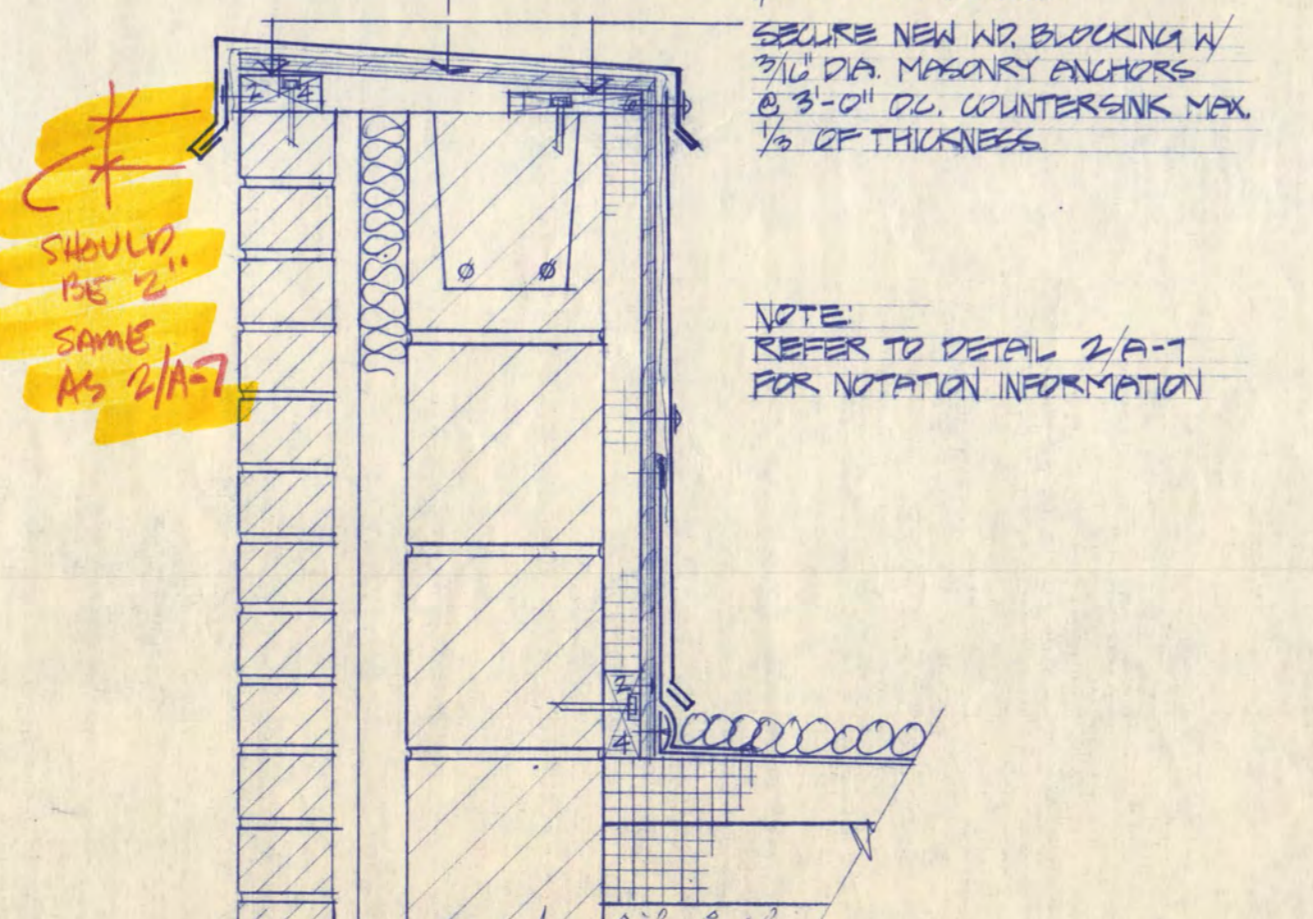


8 TAPERED INSULATION SECTION
A-7 SCALE: 3"=1'-0"



9 OVERFLOW SCUPPER SECTION
A-7 SCALE: 3"=1'-0"

6 MECH UNIT DETAIL
A-7 SCALE: 3"=1'-0"



10 PARAPET DETAIL
A-7 SCALE: 1/2"=1'-0"

CONSULTING ENGINEERS:
INSPEC, INC.
5616 Olson Memorial Highway
Minneapolis, Minnesota 55422

COPYRIGHT 1986 BY FREDRIC WEMLINGER AND ASSOCIATES, INC. THE CONTENTS OF THIS DOCUMENT ARE FOR THE SOLE AND EXCLUSIVE USE FOR THE PROJECT AND SITE IDENTIFIED HEREON. ANY OTHER USE NOT SPECIFICALLY AUTHORIZED BY THE ARCHITECT/ENGINEER IS PROHIBITED.

I HEREBY CERTIFY THAT THIS PLAN SPECIFICATION OR REPORT WAS PREPARED BY ME OR UNDER MY DIRECT SUPERVISION AND THAT I AM DULY REGISTERED ARCHITECT/ENGINEER UNDER THE LAWS OF THE STATE OF MINNESOTA

Dwight D. Benoy
DATE 12/15/86 REG. NO. 15580

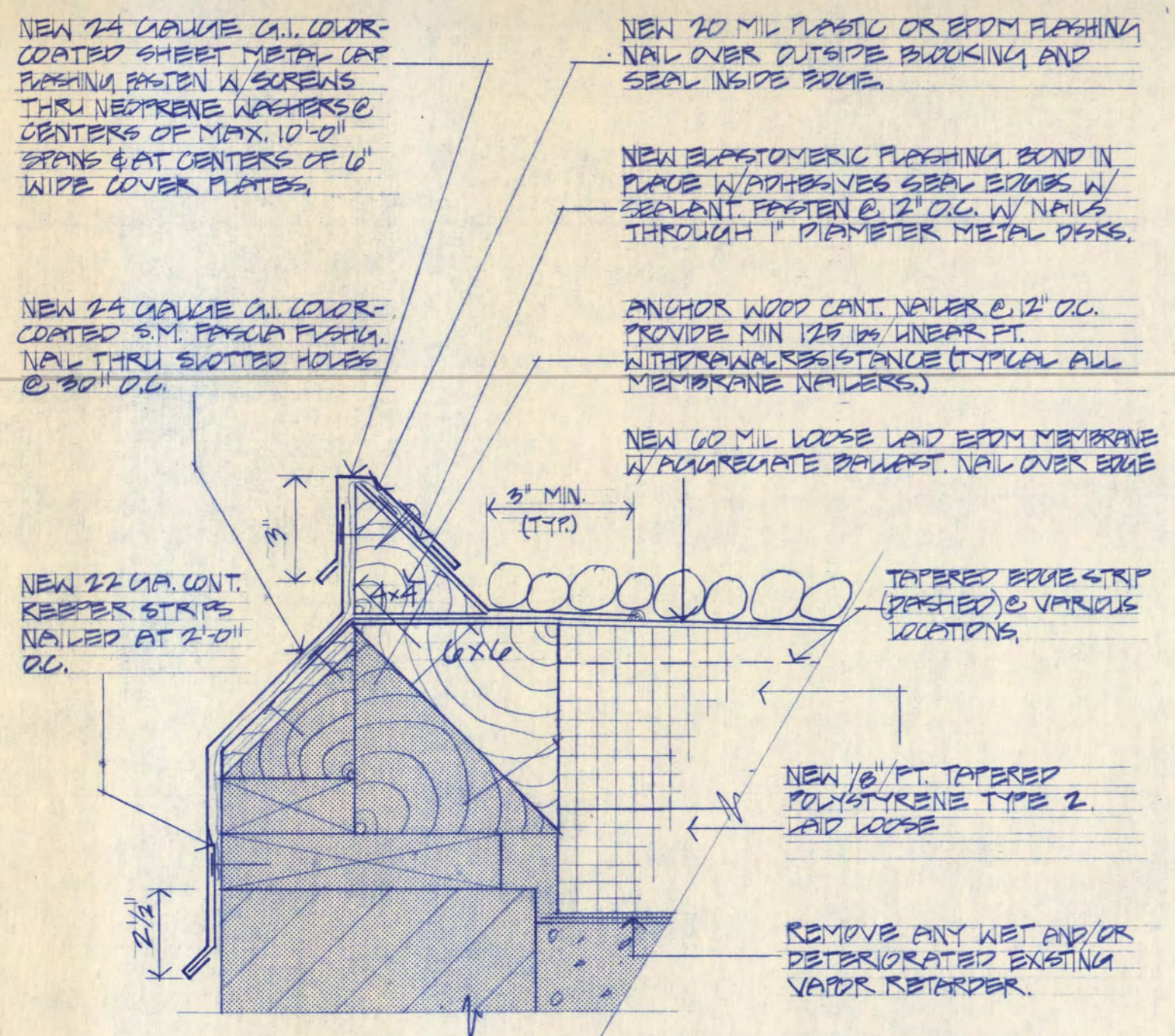
FREDRIC WEMLINGER AND ASSOCIATES, INC.
ARCHITECTS AND ENGINEERS
SAINT CLOUD, MINNESOTA 56301
TELEPHONE 612-253-2100

GARVEY COMMONS/ SHERBURNE HALL ADDITIONS & REMODELING
ST. CLOUD STATE UNIVERSITY
ST. CLOUD MINNESOTA

REVISED GENERAL CONDITIONS & NOTES DETAIL 10/87	PROJECT NO. 816 015
	ISSUE DATE 12/15/86
	DRAWN BY K. WENFELTER
	CHECKED G.P.
	APPROVED ARCHITECT F.W.
	SCALE AS SHOWN

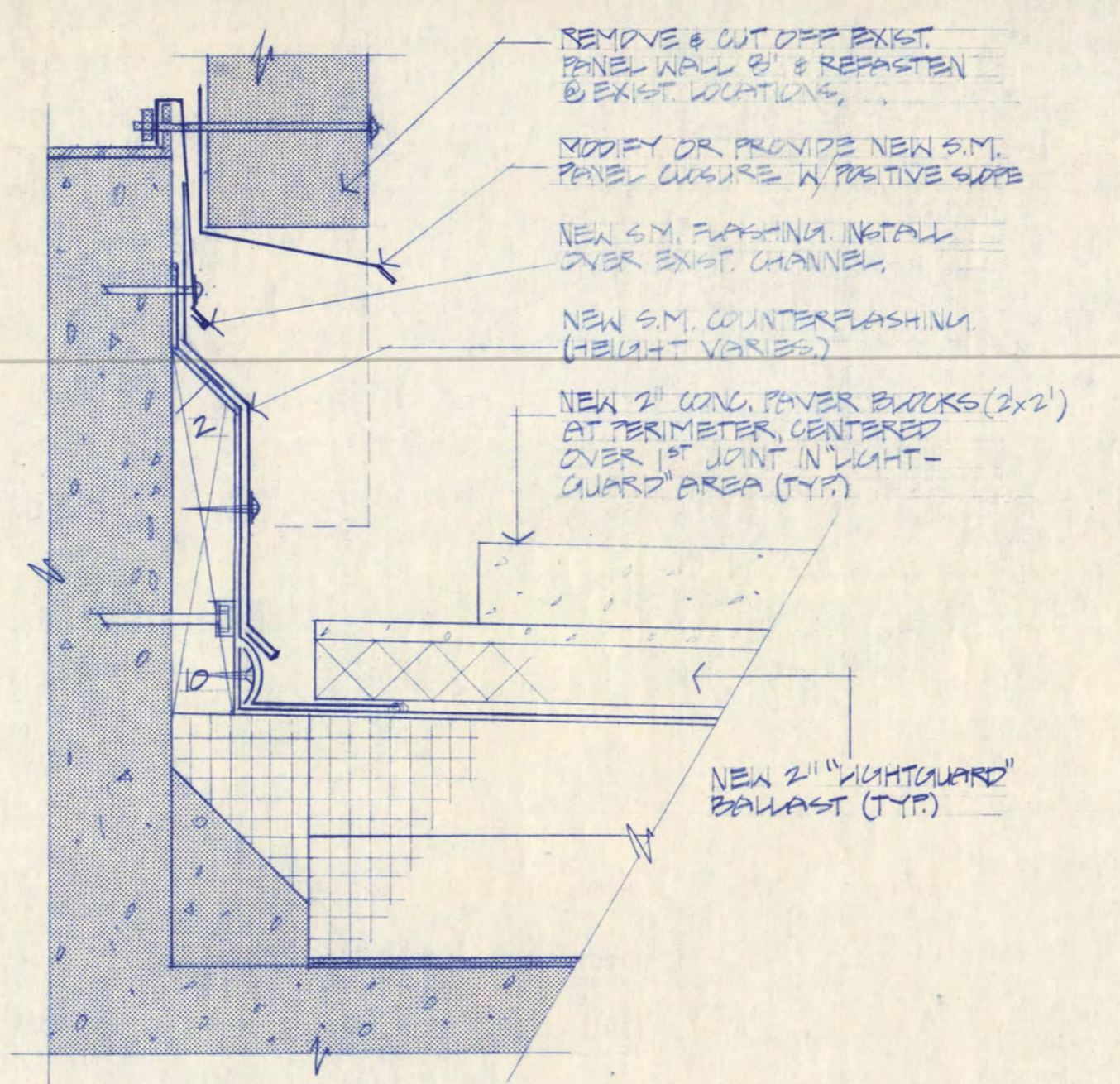


NOTE:
SEE DETAIL 1/4 FOR
COVER PLATE INFO.

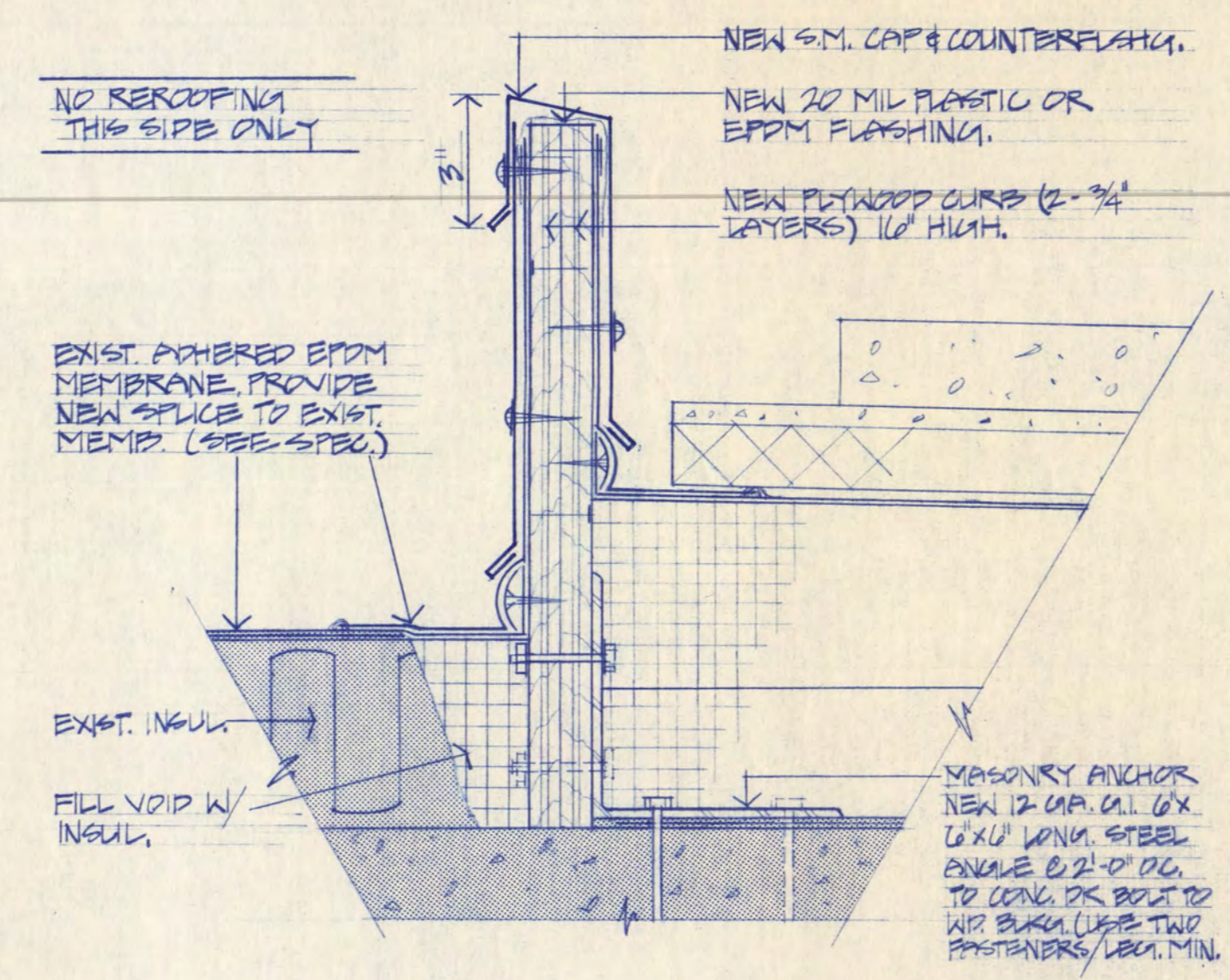


1 NEW ROOF EDGE DETAIL
A-1/4 SCALE: 3/4" = 1'-0"

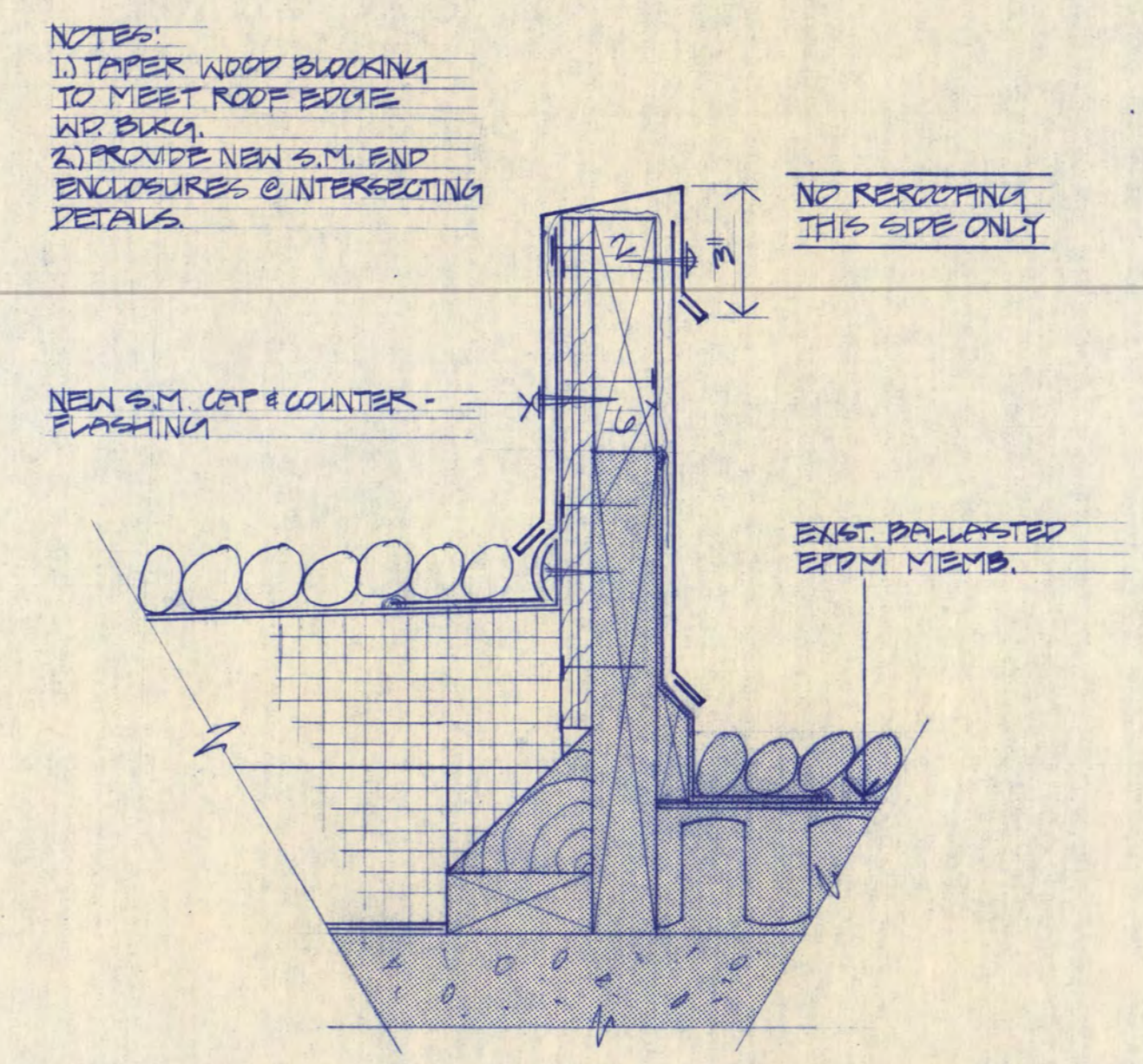
NOTE:
REMOVAL, CUTTING & REPLACEMENT OF EXIST. WALL PANELS SHALL BE DONE UNDER THE WORK OF SEC. 0753. PANEL TO PANEL & PANEL TO TRIM JOINTS SHALL BE REVEAL HEALED OR BE CASHEEDED AS REQUIRED TO MATCH EXIST. CONDITIONS.



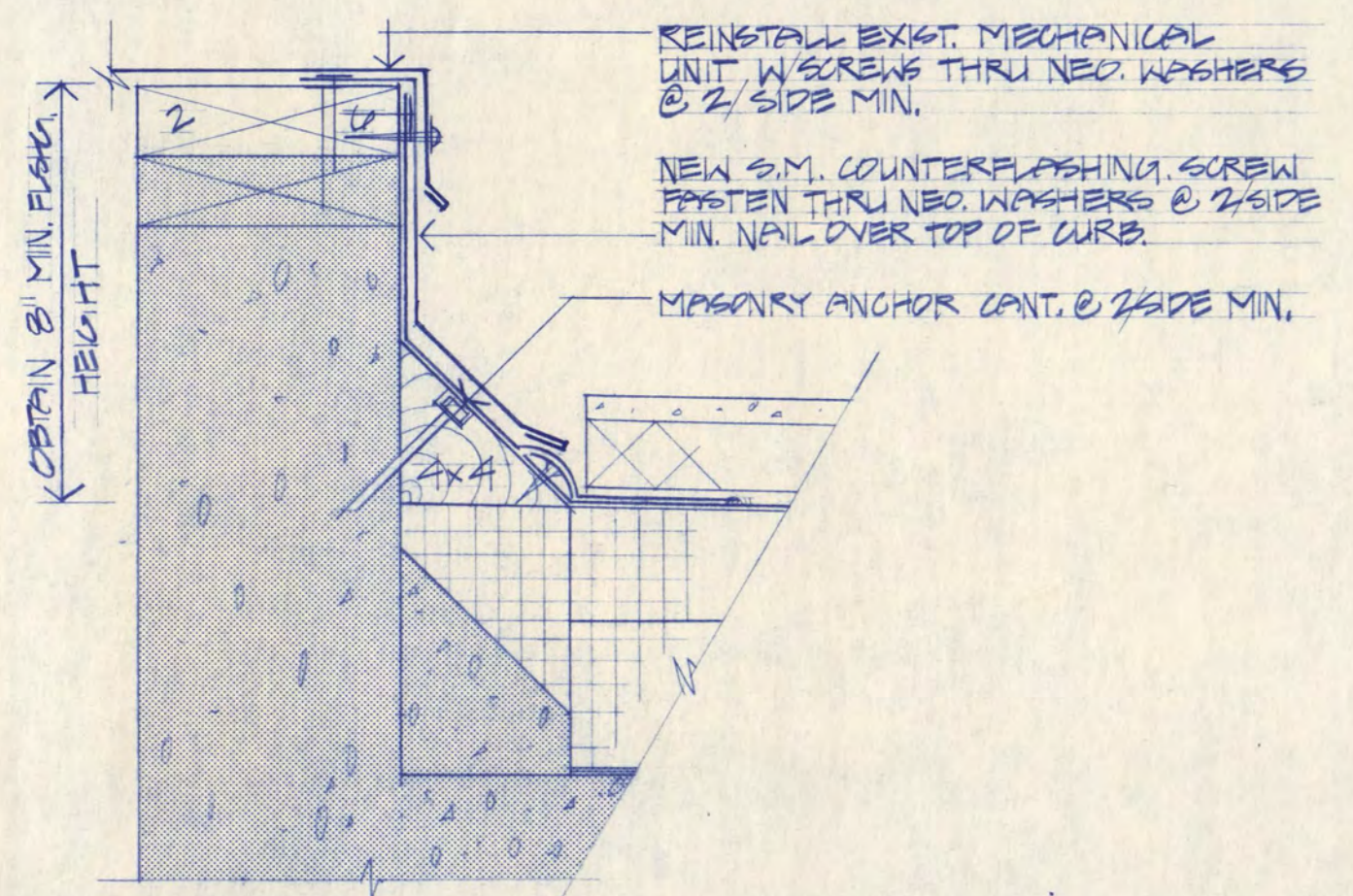
2 NEW PENTHOUSE WALL DETAIL
A-1/4 SCALE: 3/4" = 1'-0"



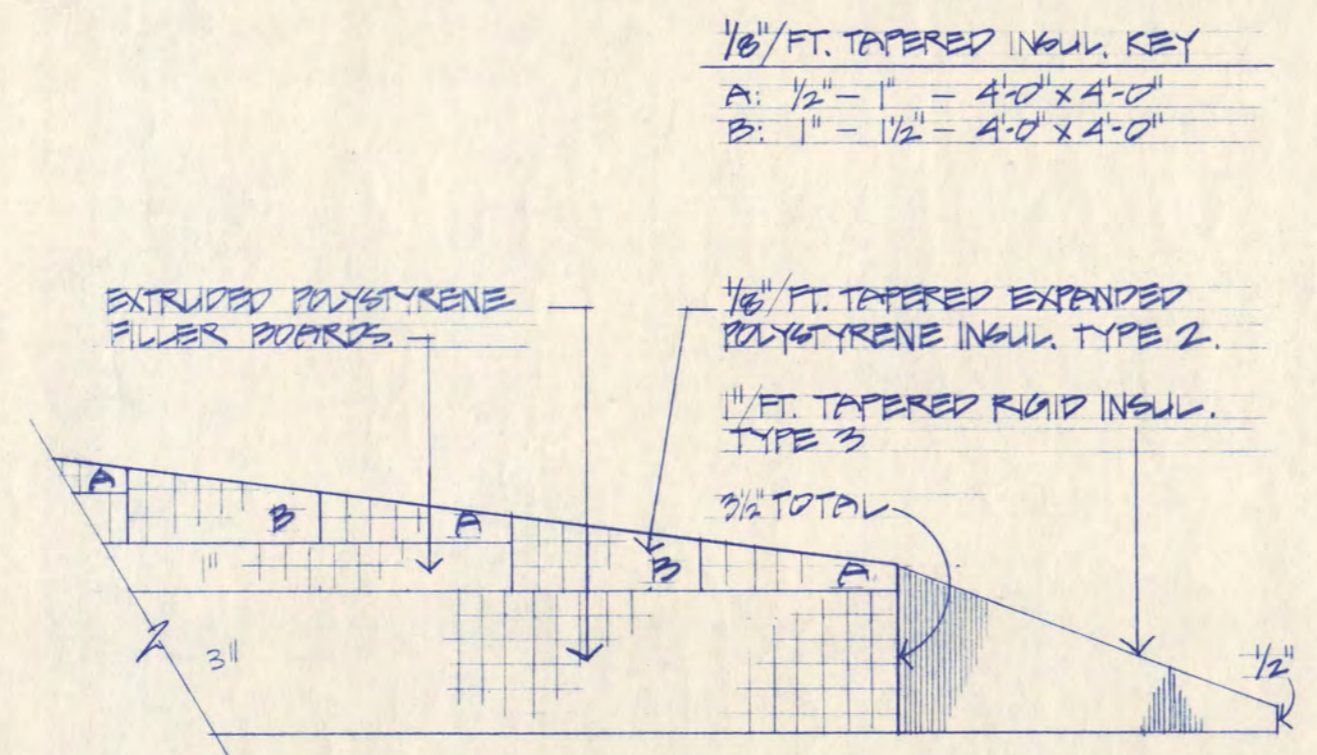
3 NEW CONTROL JT. DETAIL
A-1/4 SCALE: 3/4" = 1'-0"



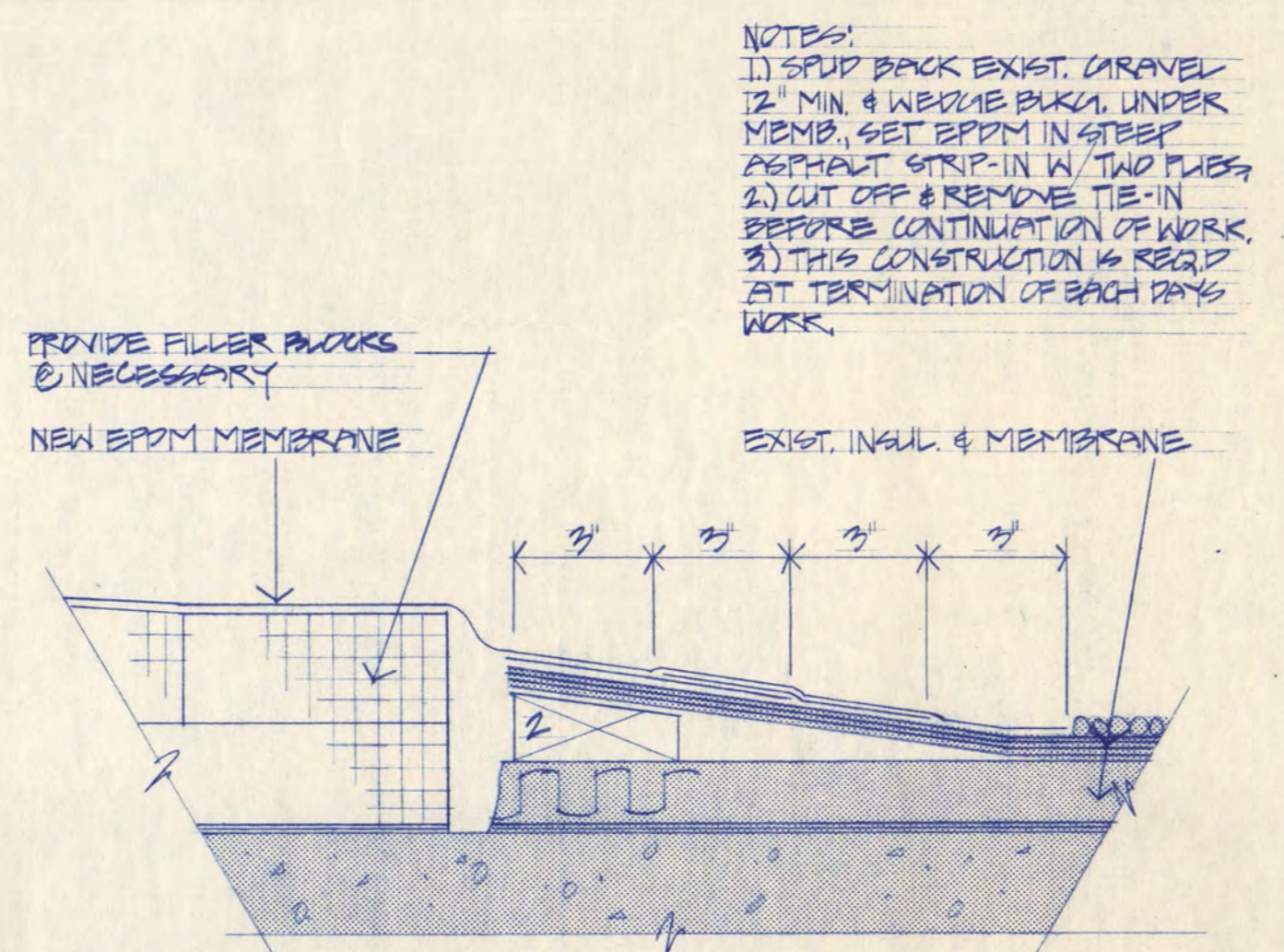
4 NEW CONTROL JT. DETAIL
A-1/4 SCALE: 3/4" = 1'-0"



5 NEW MECH. CURB DETAIL
A-1/4 SCALE: 3/4" = 1'-0"



6 NEW TAPERED INSUL. SECTION
A-1/4 NO SCALE



TEMPORARY INSUL SEAL-OFF
NO SCALE

CONSULTING ENGINEERS:
INSPEC, INC.
5616 Olson Memorial Highway
Minneapolis, Minnesota 55422

COPYRIGHT 1987 BY FREDRIC WEMLINGER AND ASSOCIATES, INC. THE CONTENTS OF THIS DOCUMENT ARE FOR THE SOLE AND EXCLUSIVE USE FOR THE PROJECT AND SITE IDENTIFIED HEREON. ANY OTHER USE NOT SPECIFICALLY AUTHORIZED BY THE ARCHITECT/ENGINEER IS PROHIBITED.

I HEREBY CERTIFY THAT THIS PLAN SPECIFICATION OR REPORT WAS PREPARED BY ME OR UNDER MY DIRECT SUPERVISION AND THAT I AM DULY REGISTERED ARCHITECT/ENGINEER UNDER THE LAWS OF THE STATE OF MINNESOTA.

Dwight D. Benoy
DATE 1/19/87 REG. NO. 15580

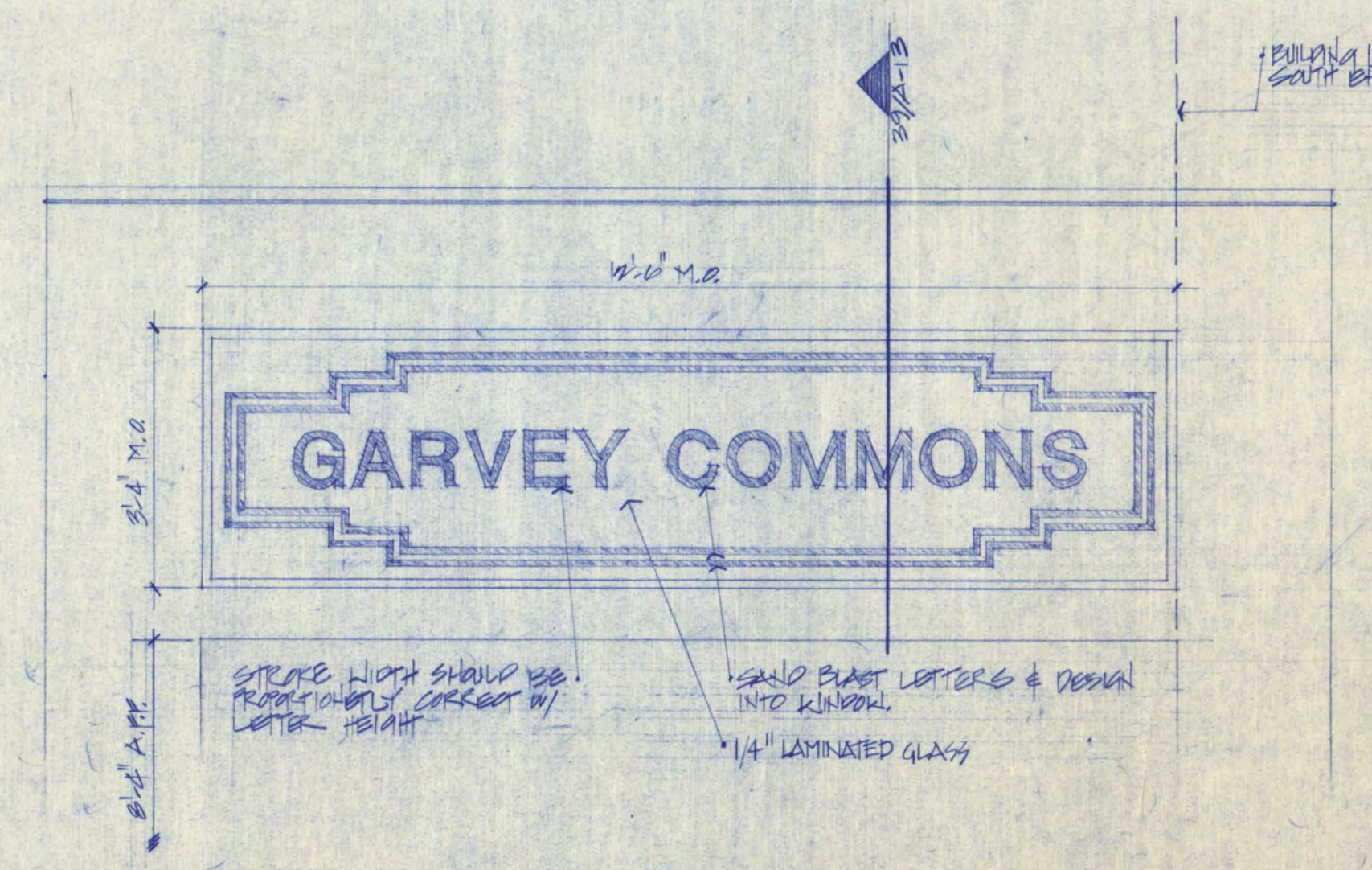
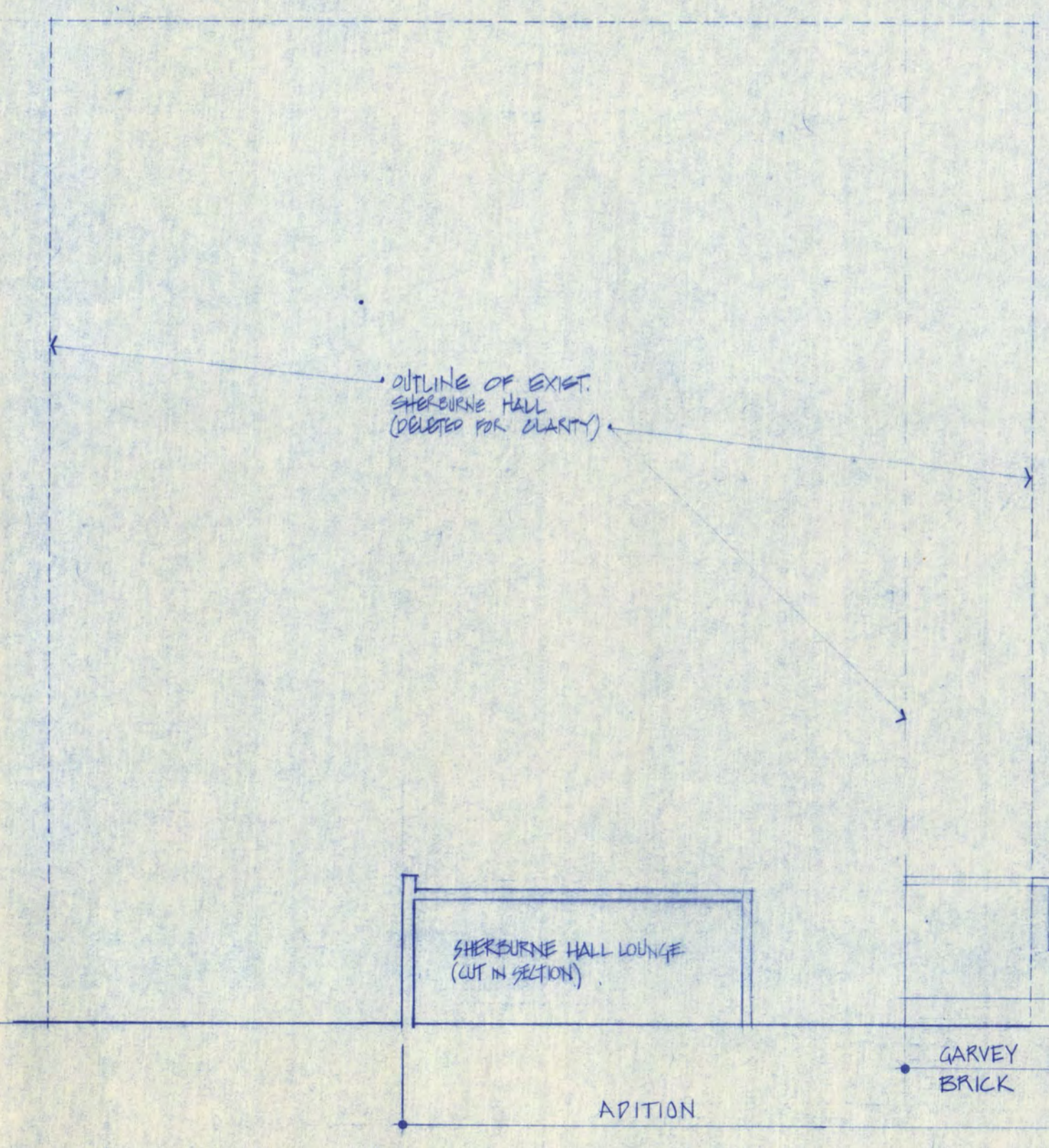
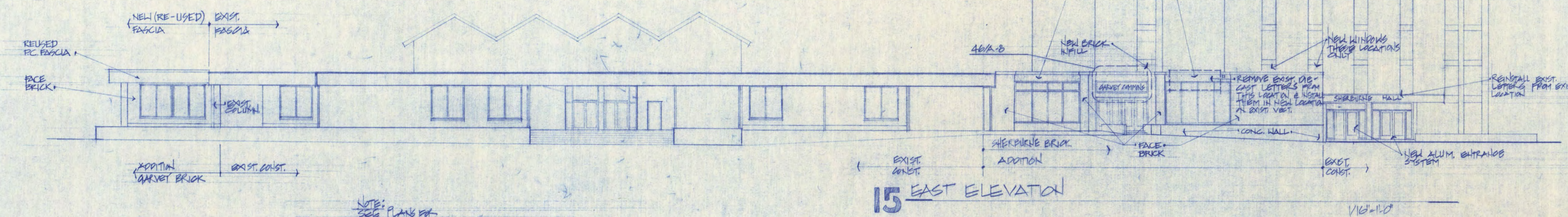
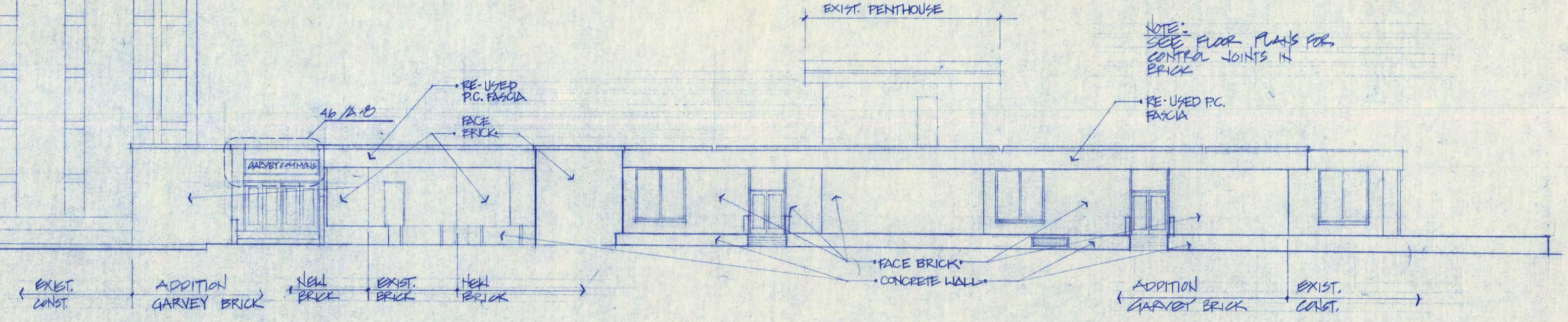
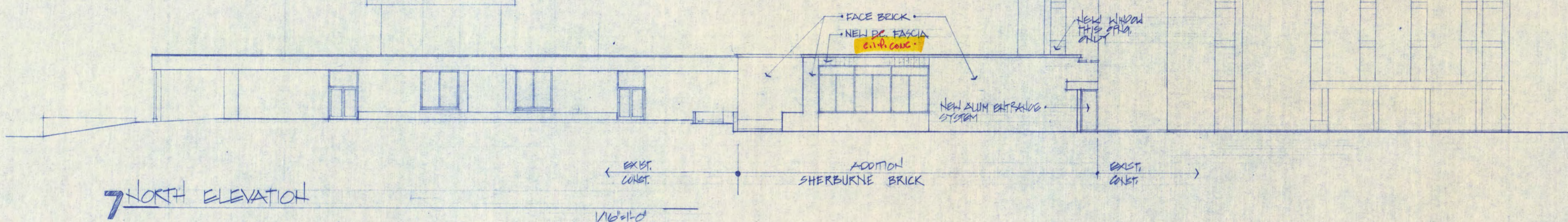
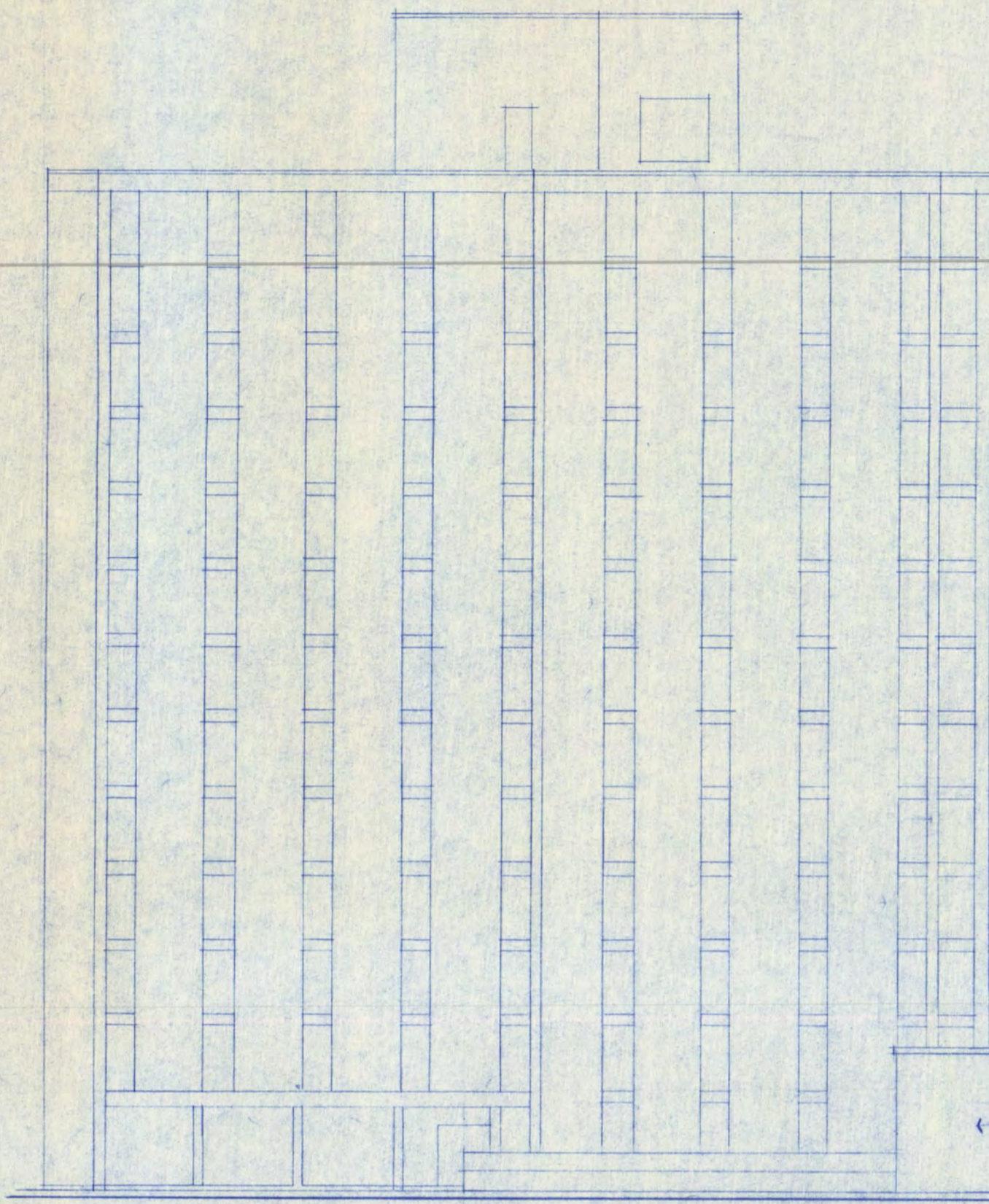
FREDRIC WEMLINGER AND ASSOCIATES INC.
ARCHITECTS AND ENGINEERS
SAINT CLOUD, MINNESOTA 56301
TELEPHONE 812-253-2100

**GARVEY COMMONS/
SHERBURNE HALL
ADDITIONS & REMODELING
ST. CLOUD STATE UNIVERSITY
ST. CLOUD MINNESOTA**

REVISED	PROJECT NO. 80015
ADD THIS SHEET	ISSUE DATE 21 JAN 1987
	DRAWN BY S.P. ANDERSON
	CHECKED C.H.P.
	APPROVED ARCHITECT F.W.
	SCALE AS NOTED

A-7A

- General Notes
- See plan sheets for control joint locations.
 - See plans for section and detail cut locations and exterior building materials.
 - See mechanical and electrical sheets for any related work.



COPYRIGHT 1986 BY FREDRIC WEMLINGER AND ASSOCIATES, INC. THE CONTENTS OF THIS DOCUMENT ARE FOR THE SOLE AND EXCLUSIVE USE FOR THE PROJECT AND SITE IDENTIFIED HEREON. ANY OTHER USE NOT SPECIFICALLY AUTHORIZED BY THE ARCHITECT/ENGINEER IS PROHIBITED.

I HEREBY CERTIFY THAT THIS PLAN SPECIFICATION OR REPORT WAS PREPARED BY ME OR UNDER MY DIRECT SUPERVISION AND THAT I AM DULY REGISTERED ARCHITECT/ENGINEER UNDER THE LAWS OF THE STATE OF MINNESOTA.

DATE 13, DEC. 1980 REG. NO. 8613

FREDRIC WEMLINGER AND ASSOCIATES INC.
ARCHITECTS AND ENGINEERS
SAINT CLOUD, MINNESOTA 56301
TELEPHONE 812-253-2100

**GARVEY COMMONS/
SHELBURNE HALL
ADDITIONS & REMODELING**
ST. CLOUD STATE UNIVERSITY
ST. CLOUD MINNESOTA

REVISED	PROJECT NO. 8605
	ISSUE DATE 13, DEC 1980
	DRAWN BY SAH & FA
	CHECKED CH
	APPROVED ARCHITECT F.W.
	SCALE AS NOTED