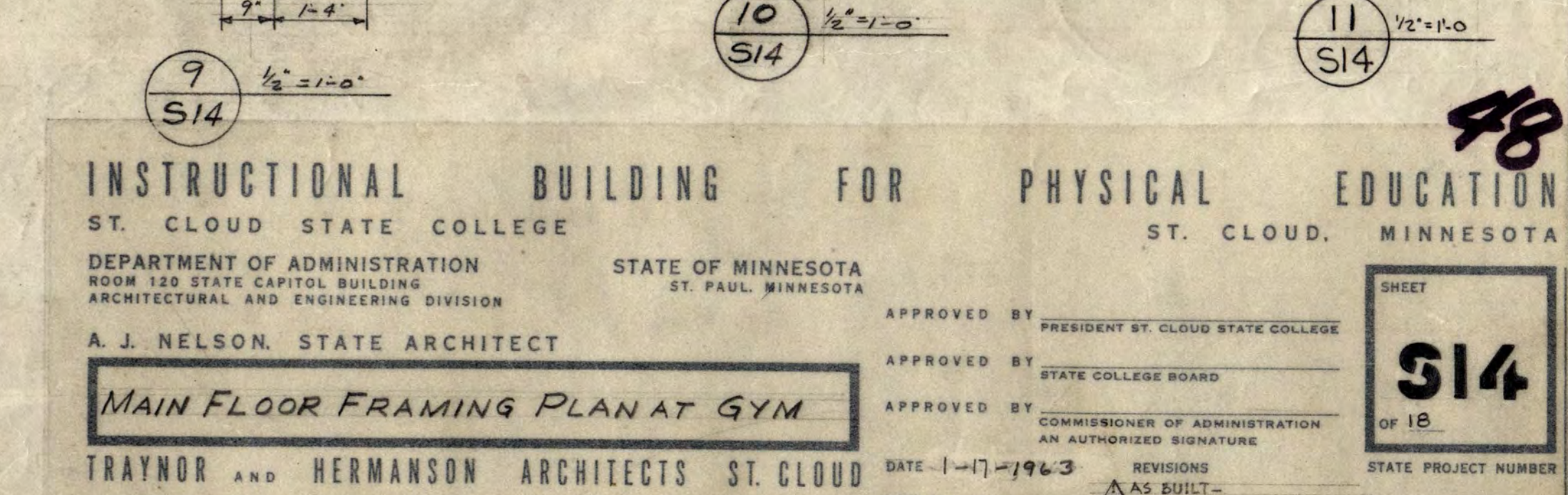
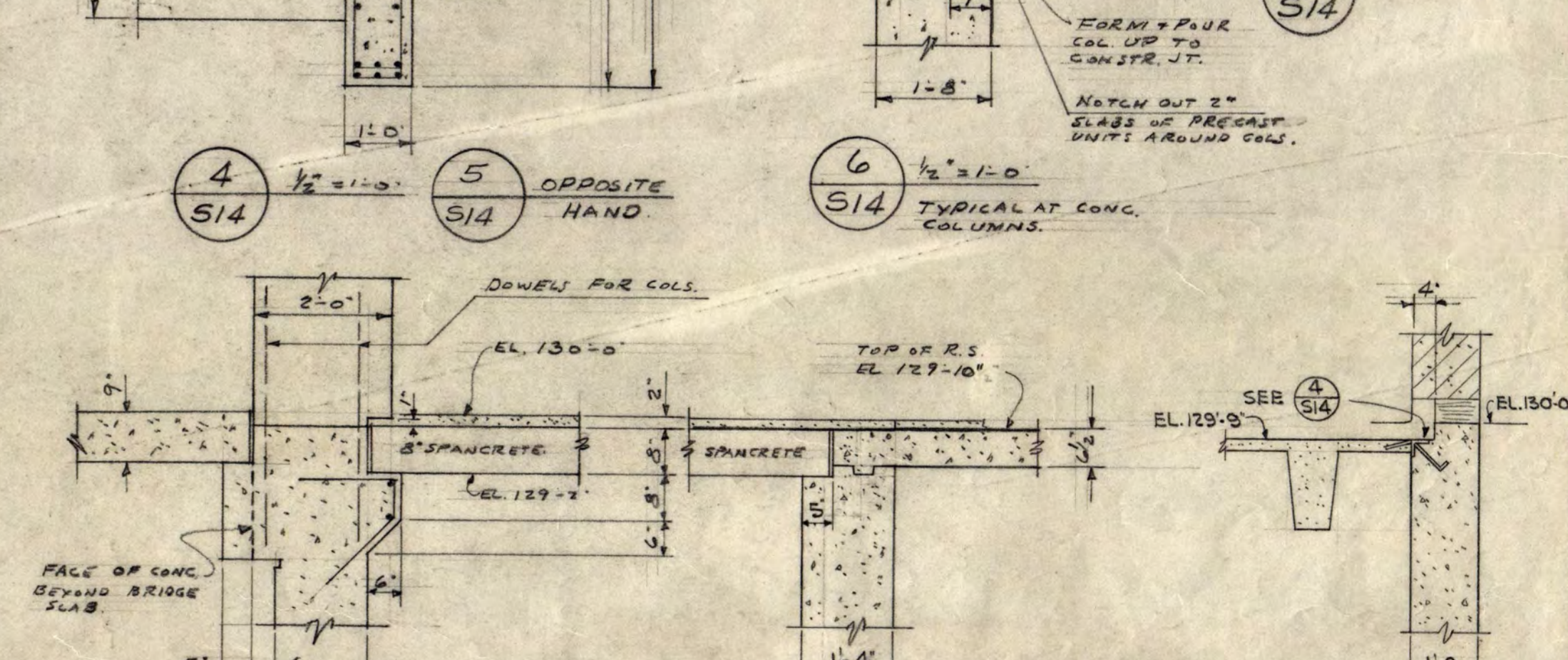
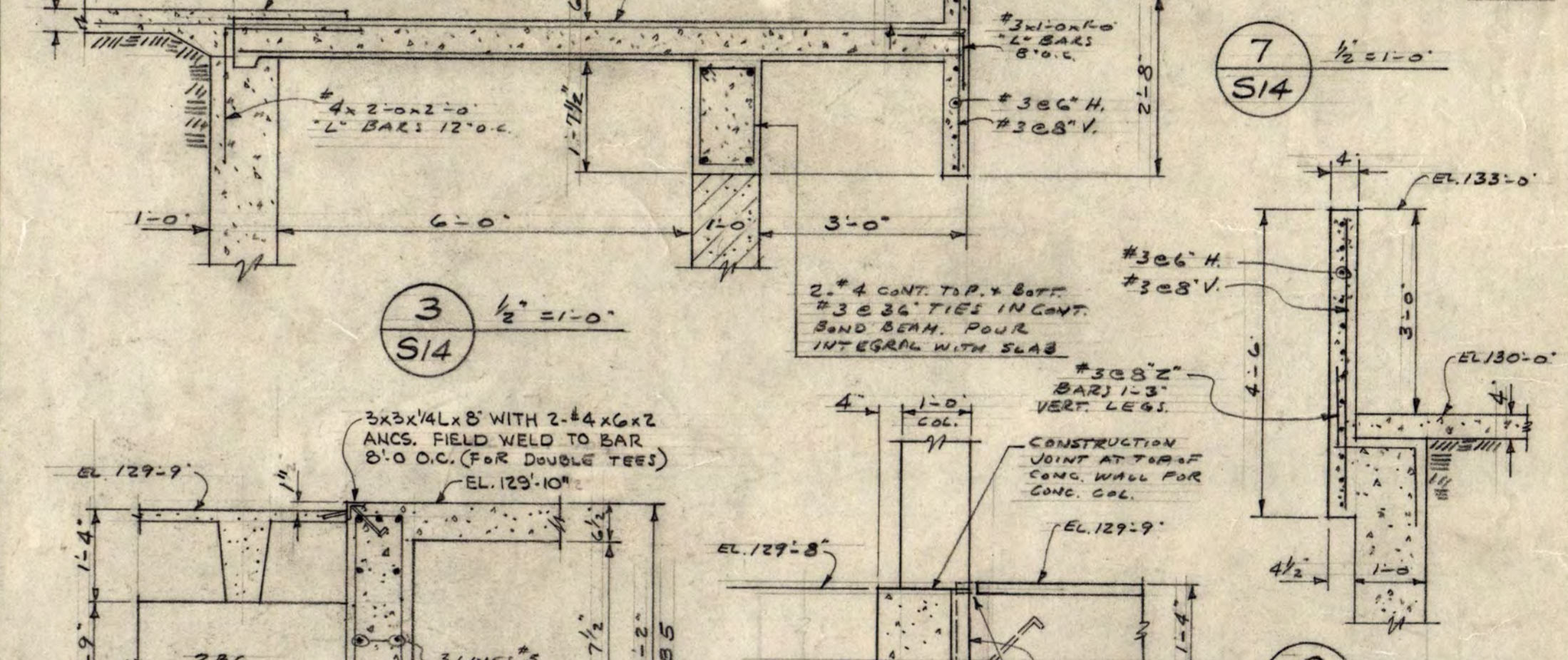
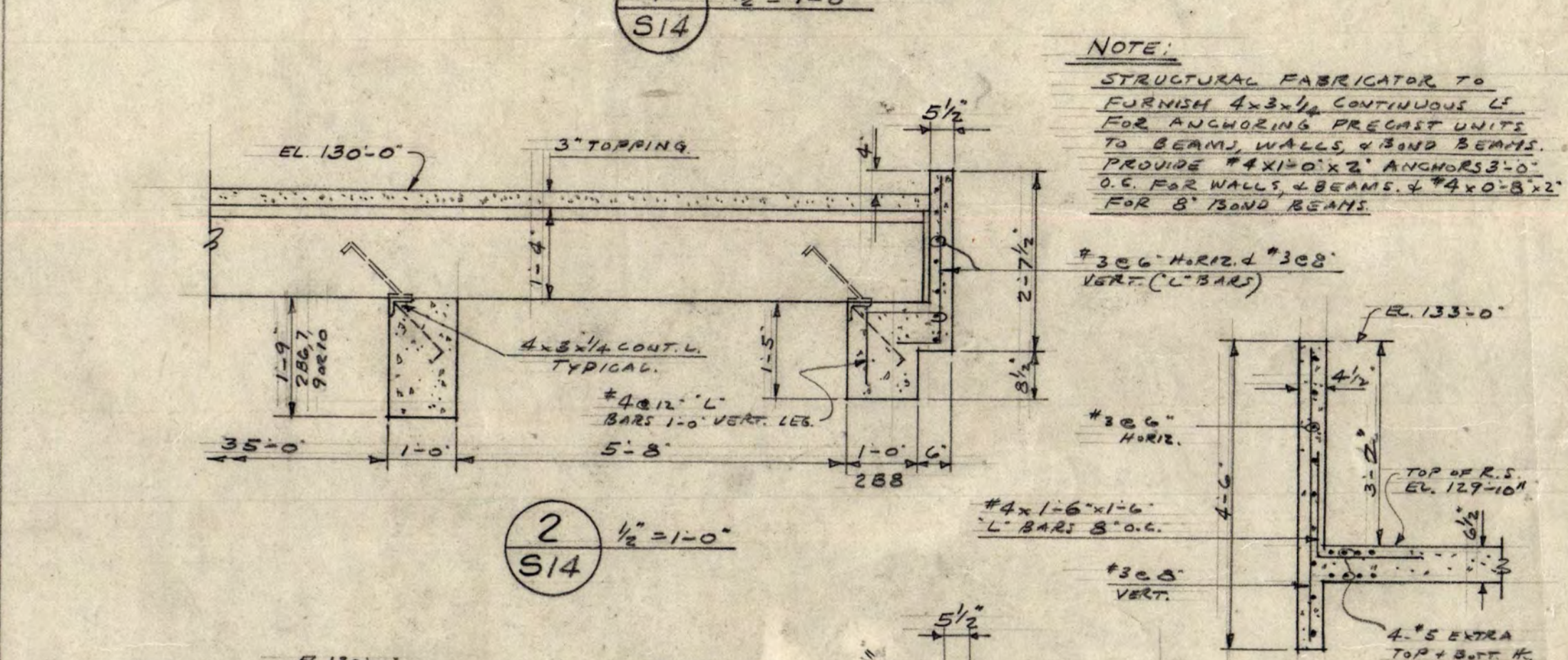
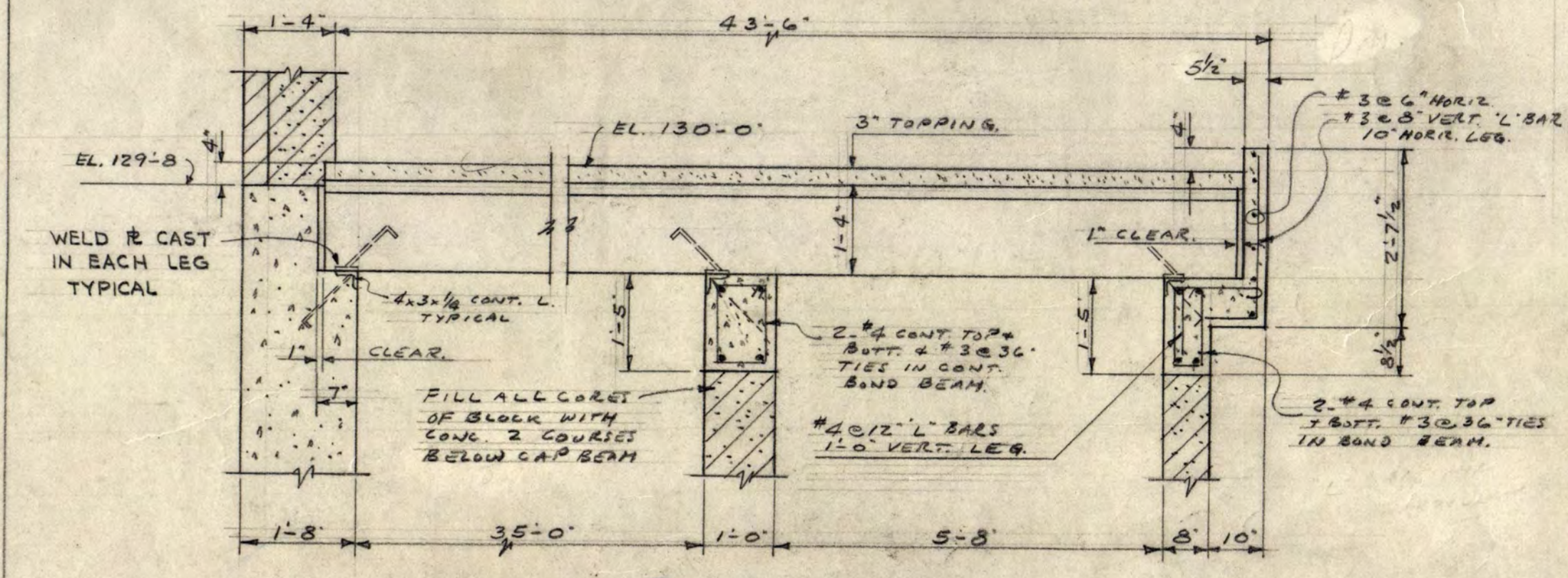


CONCRETE BEAM SCHEDULE									
MARK	D	SPACING	BENT	SP. TOP	NO. FIELD REINFORCING BARS	REMARKS			
281	12	27	4*9	3*9	14	#3 308, 2015, 2024			
282	12	27	3*6	2*7	12	#3 308, 3012			
283	12	27	4*7	3*7	12	#3 4			
284	12	16	4*6	3*6	12	#3 308, 3012			
285	12	50	4*9	3*9	10	#3 206, 308, 402			
286	12	21	4*6	4*7	12	#3 304, 306			
287	12	21	4*6	4*7	14	#3 304, 406			
288	12	17	4*6	4*6	12	#3 306, 4012			
289	12	21	4*6	4*7	12	#3 304, 306			
2810	12	21	4*6	4*7	14	#3 304, 406			
2811	12	64	3*7	3*7	3	12*0.0.			

NOTE: BEAMS 2811 AND 2812 SHOWN ON THIS PLAN AT GRID LINE 7 (D TO E + F TO G) ARE SCHEDULED WITH MAIN FLOOR FRAMING PLAN AT POOL SHEET 36.



48

STRUCTURAL BUILDING FOR PHYSICAL EDUCATION

ST. CLOUD STATE COLLEGE ST. CLOUD, MINNESOTA

DEPARTMENT OF ADMINISTRATION STATE OF MINNESOTA
 ROOM 130 STATE CAPITOL BUILDING ST. PAUL, MINNESOTA

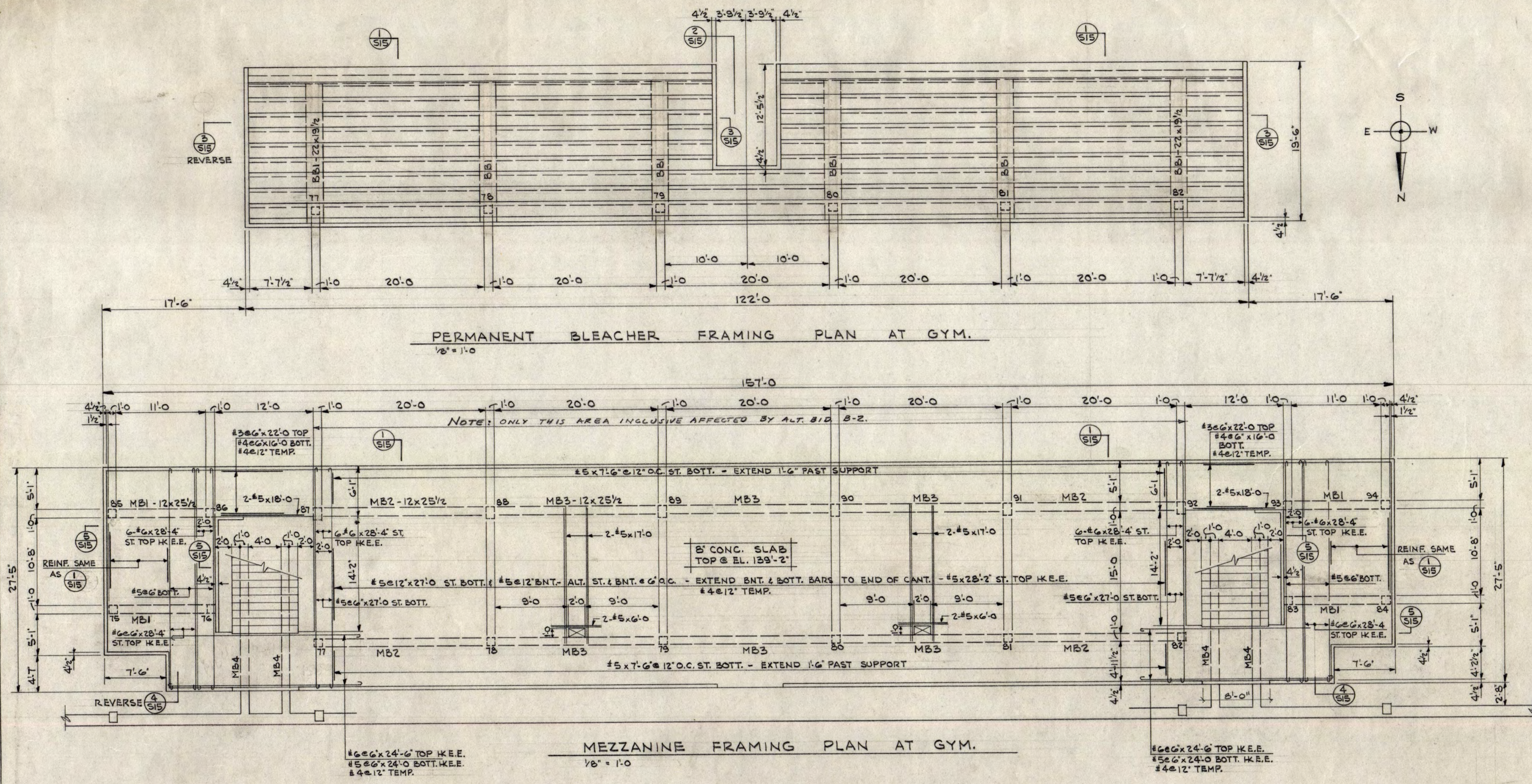
A. J. NELSON, STATE ARCHITECT APPROVED BY PRESIDENT OF CLOUD STATE COLLEGE

MAIN FLOOR FRAMING PLAN AT GYM APPROVED BY STATE COLLEGE BOARD

TRAYNOR AND HERMANSON ARCHITECTS ST. CLOUD DATE: 1-17-1923 APPROVED BY COMMISSIONER OF ADMINISTRATION AN AUTHORIZED SIGNATURE

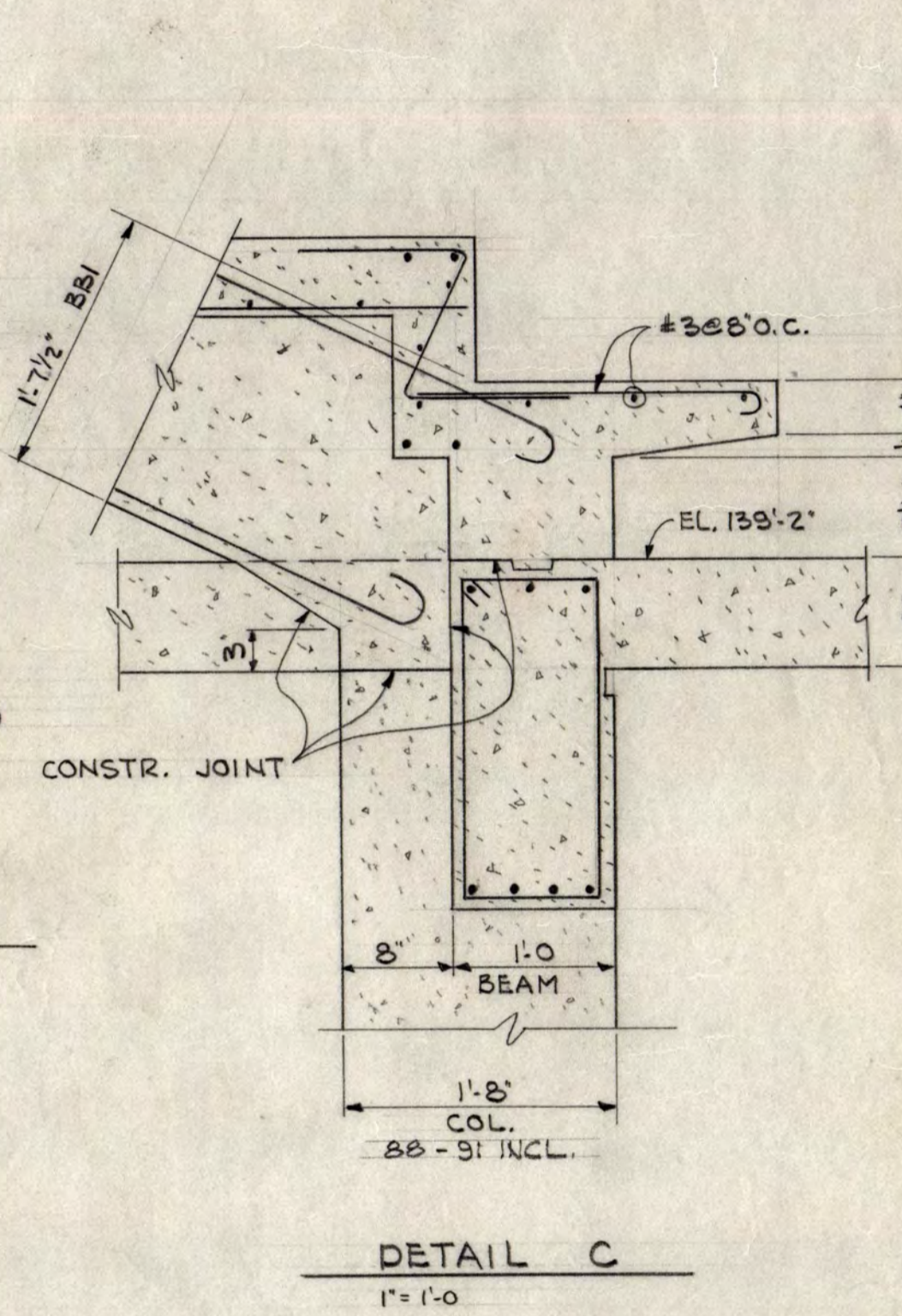
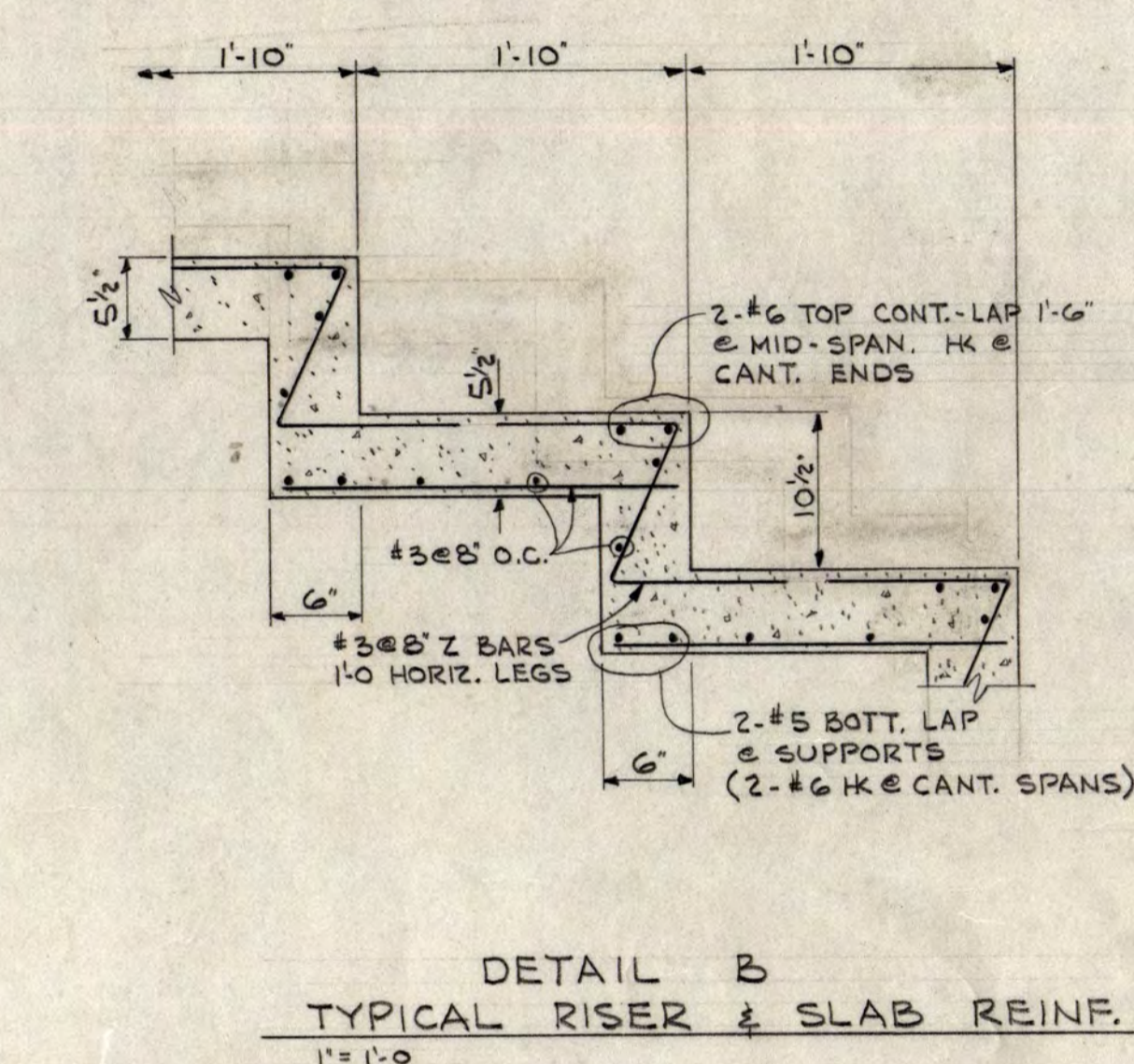
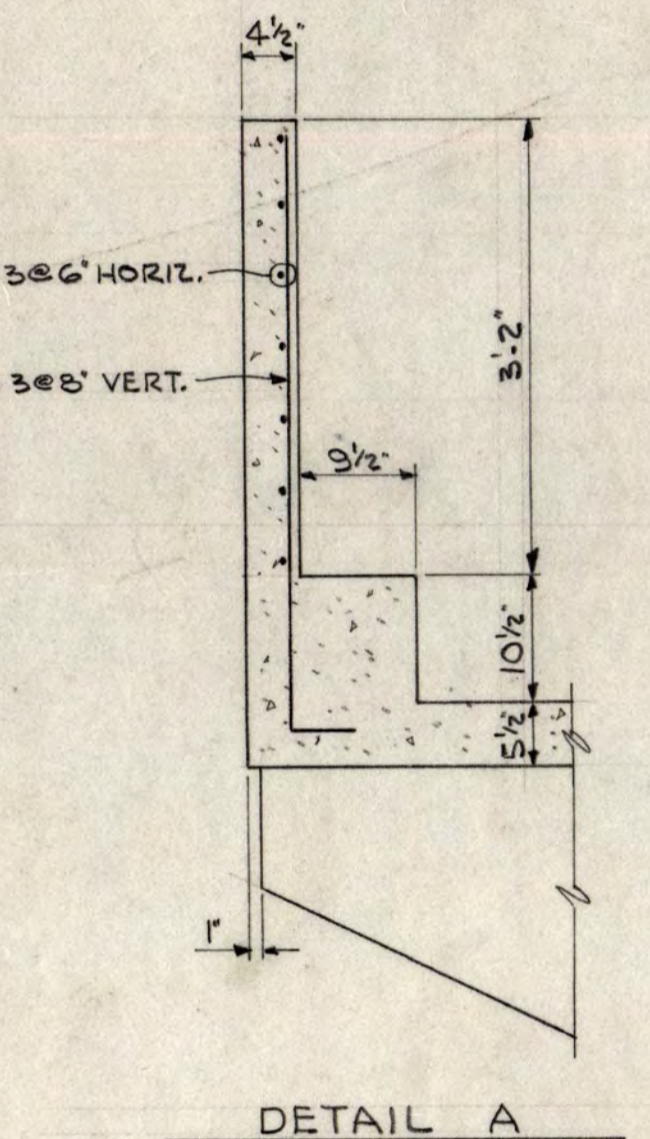
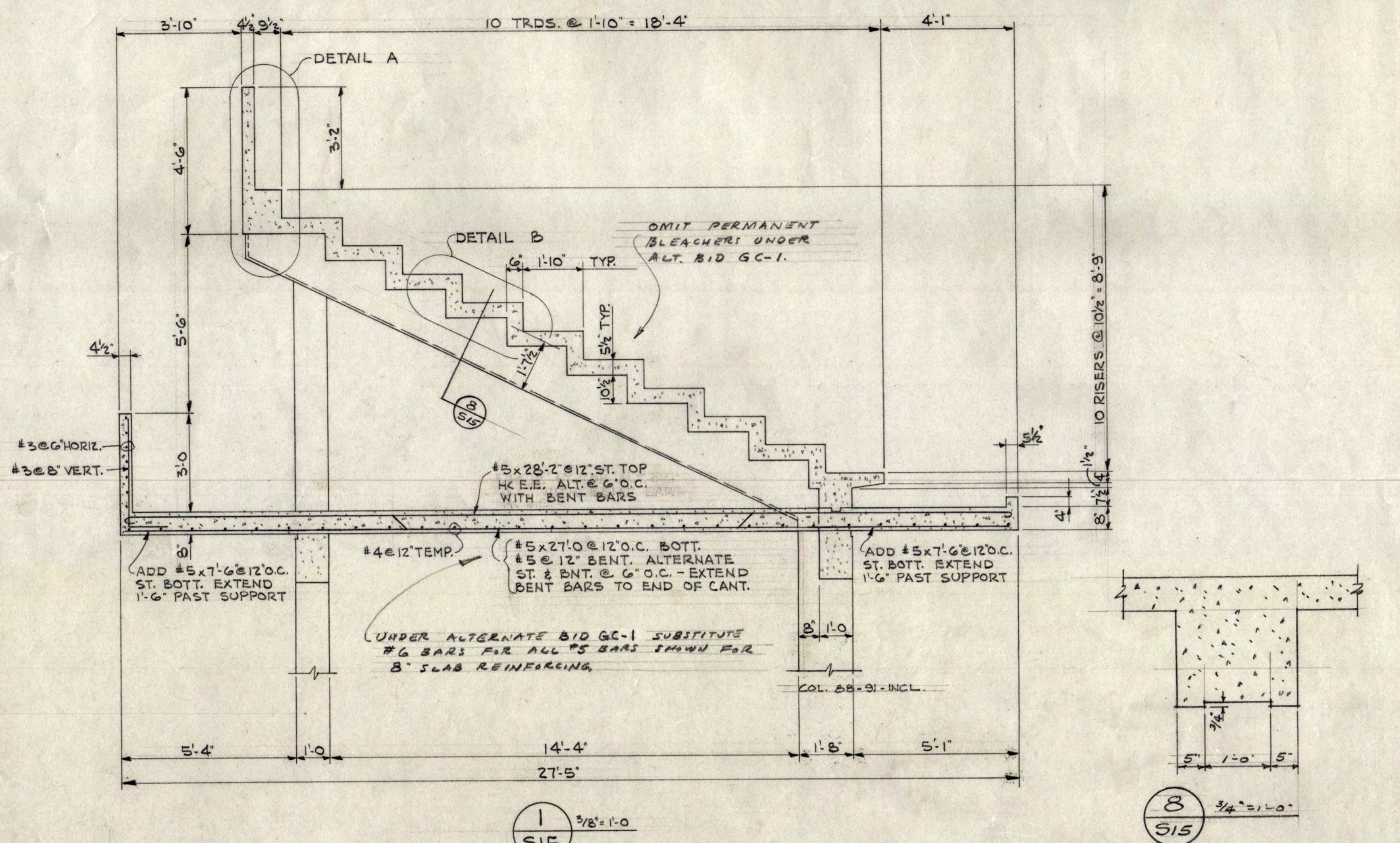
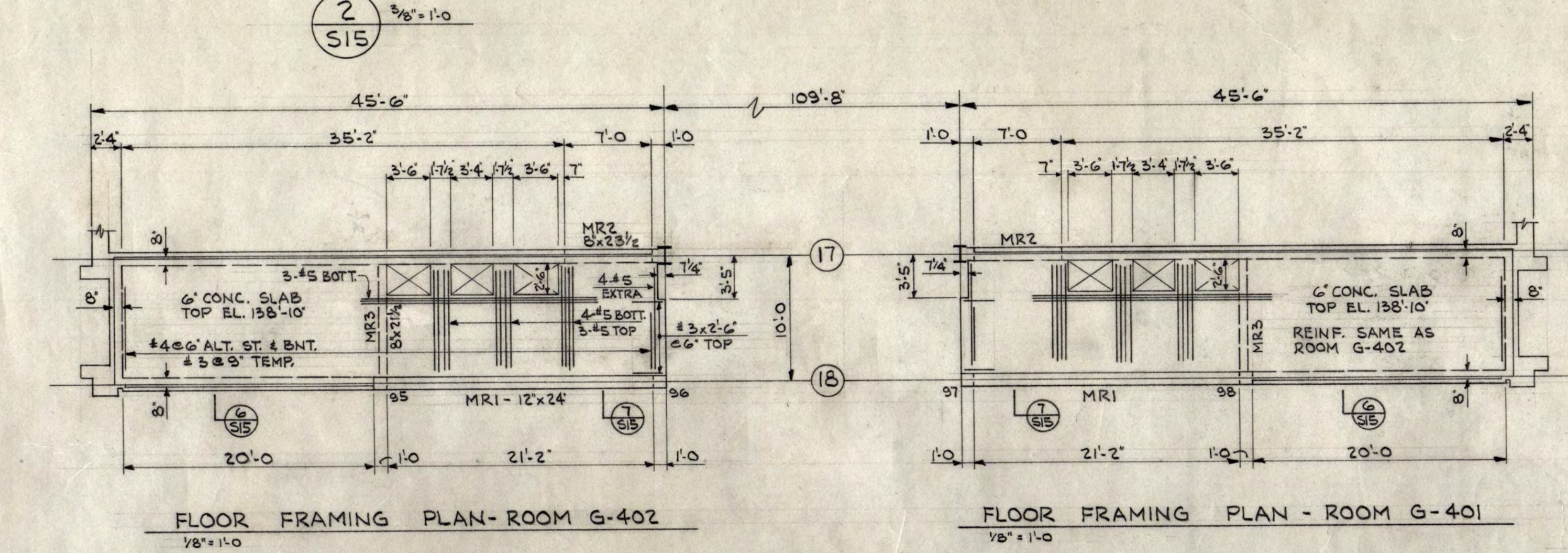
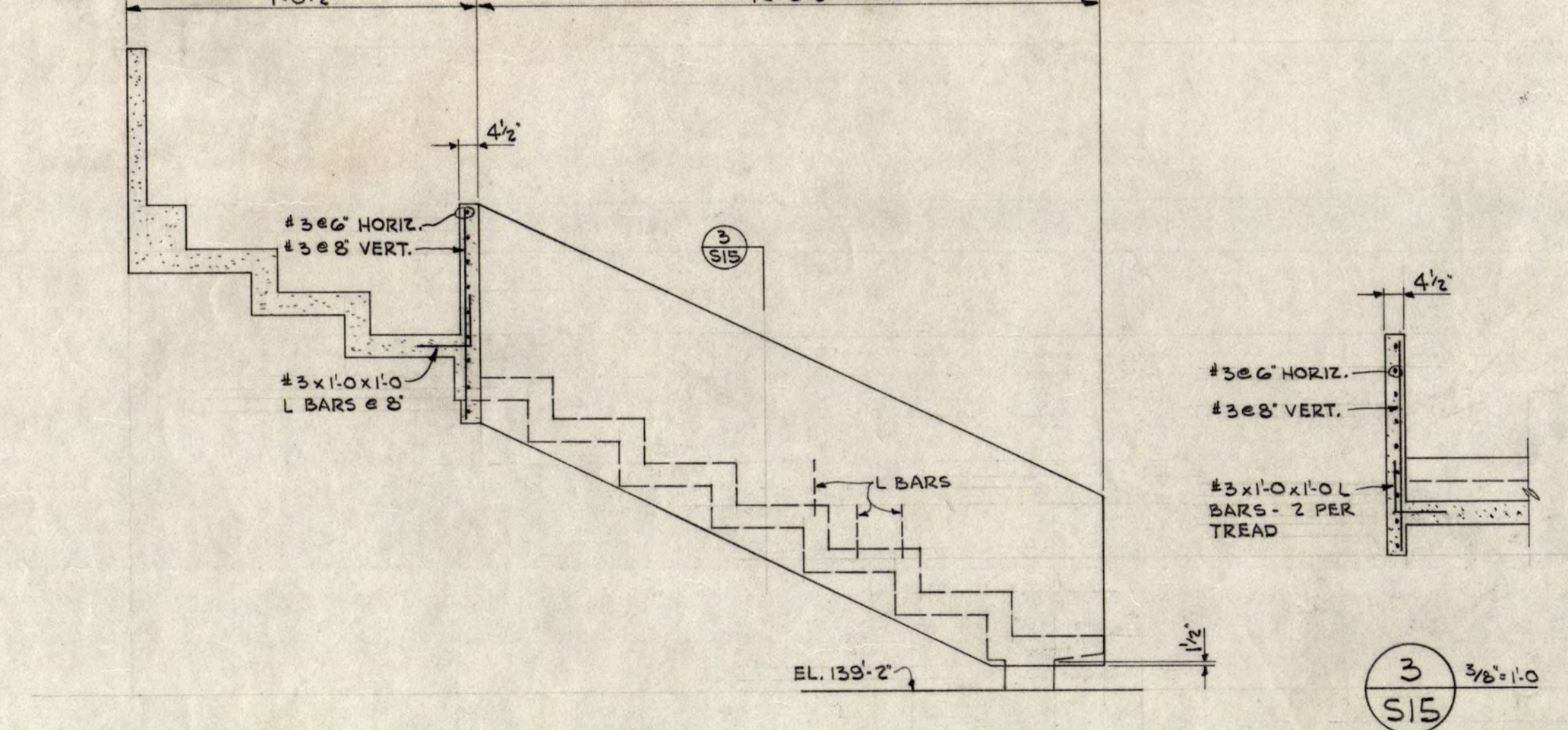
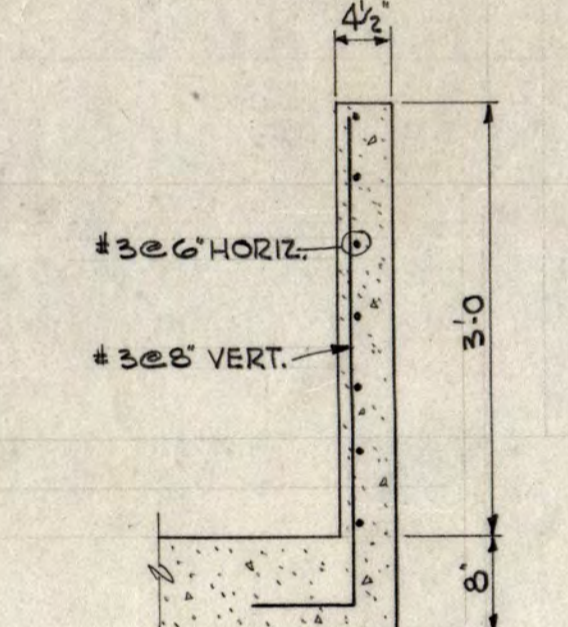
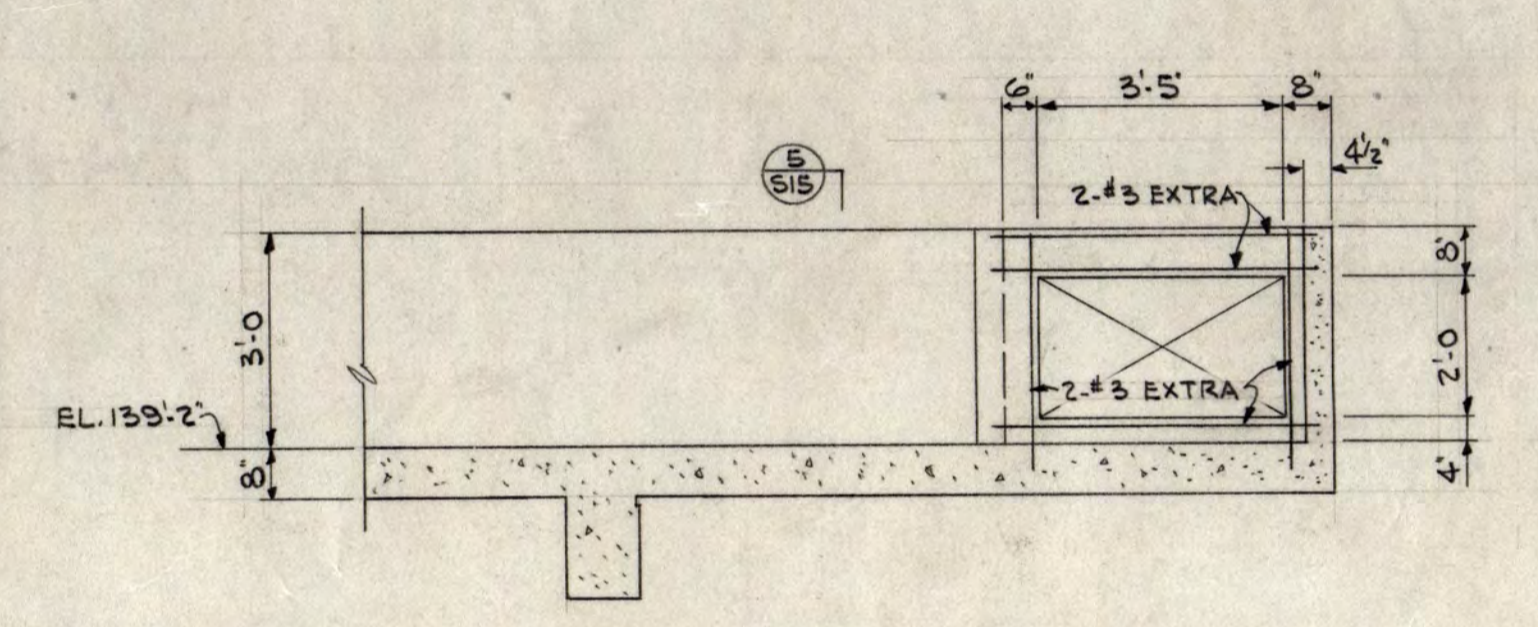
STRUCTURAL ENGINEERS: JOHNSTON & SAHLMAN MINNEAPOLIS, MINN. DRAWN J.W.S.
 CONSULTING ENGINEERS: GAUSMAN & MOORE, INC. ST. PAUL, MINN. CHECKED

SHEET **514** OF 18
 STATE PROJECT NUMBER 3425



CONCRETE BEAM SCHEDULE									
MARK	B	D	STRAIGHT	BENT	STR. TOP	REINFORCE OR TIES	REMARKS		
BB1	22	19 1/2	6-#9	—	5-#8	#3 STIRR. 2 @ 6" EACH END	DO BB1		
MB1	12	25 1/2	4-#6	—	3-#6	#3 STIRR. 2 @ 6", 3 @ 12"	DO BB1		
MB2	12	25 1/2	2-#7	2-#9	2-#8 @ 11'-0"	#3 STIRR. 3 @ 6", 3 @ 12"	HK STAIR STAIR SPRING CTR. ST. TOP ON E OF SPAN - EXTEND BNT. & BOTT. BARS INTO ADJ. SPAN		
MB3	12	25 1/2	2-#7	2-#9	2-#8 @ 11'-0"	#3 STIRR. 3 @ 6", 3 @ 12"	STR. ST. TOP ON E OF SPAN - EXTEND BNT. & BOTT. BARS INTO ADJ. SPAN		
MB4	12	25 1/2	2-#7	2-#9	2-#8 @ 11'-0"	#3 STIRR. 3 @ 6", 3 @ 12"	SEE DETAIL SHEET SB		
MB2A	16	25 1/2	3-#6	3-#8	3-#8 @ 11'-0"	#3 STIRR. 3 @ 6", 3 @ 12"	DO MB2		
MB3A	16	25 1/2	3-#6	3-#8	3-#8 @ 11'-0"	#3 STIRR. 3 @ 6", 3 @ 12"	DO MB3		
MR1	12	24	3-#6	—	3-#8	#3 STIRR. 3 @ 6", 4 @ 24"	UPTURNED BNT. FOUR WITH SLAB		
MR2	8	23 1/2	2-#7	—	2-#6	#3 STIRR. 3 @ 6", 1 @ 12"	FOUR WITH SLAB - HK TOP & BOTT. BARS		
MR3	8	21 1/2	2-#5	—	2-#5	#3 STIRR. 2 @ 6", 1 @ 12"	DO MR2		

* USE THESE BEAMS IN LIEU OF MB2, MB3 UNDER ALTERNATE BID GC-1 SEE SPEC. 12-5 1/2



INSTRUCTIONAL BUILDING FOR PHYSICAL EDUCATION
ST. CLOUD STATE COLLEGE ST. CLOUD, MINNESOTA

DEPARTMENT OF ADMINISTRATION STATE OF MINNESOTA
ROOM 120 STATE CAPITOL BUILDING ST. PAUL, MINNESOTA

A. J. NELSON, STATE ARCHITECT

APPROVED BY PRESIDENT ST. CLOUD STATE COLLEGE
STATE OFFICE BOARD

APPROVED BY COMMISSIONER OF ADMINISTRATION
AN AUTHORIZED SIGNATURE

PERMANENT BLEACHER PLAN & DETAILS

TRAYNOR AND HERMANSON ARCHITECTS ST. CLOUD

DATE 1-17-1963 REVISIONS AS BUILT

STRUCTURAL ENGINEERS: JOHNSON & SAHLMAN MINNEAPOLIS, MINN.
CONSULTING ENGINEERS: GAUSMAN & MOORE, INC. ST. PAUL, MINN. CHECKED J. W. S.

49

515

3425

