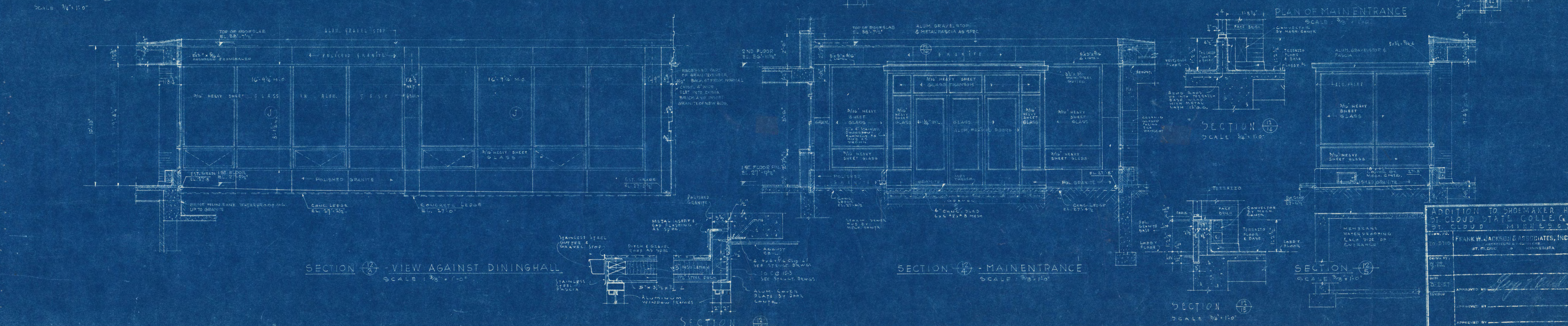
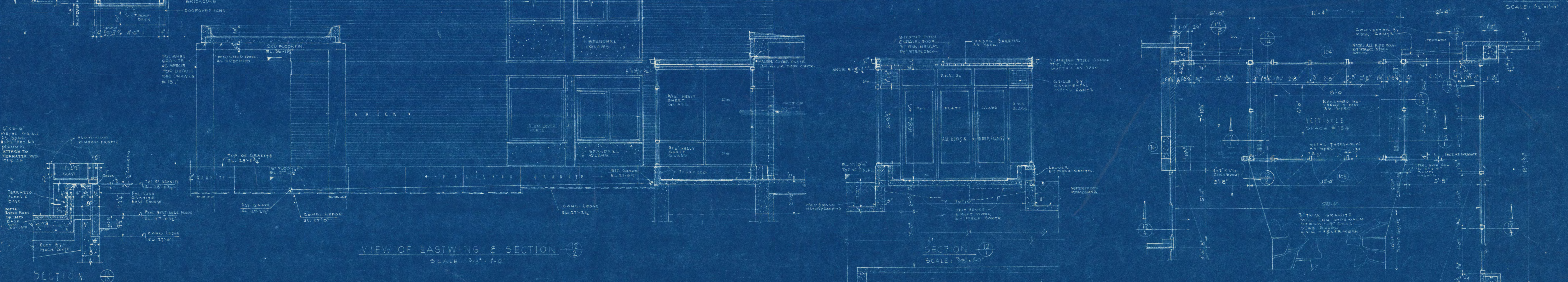
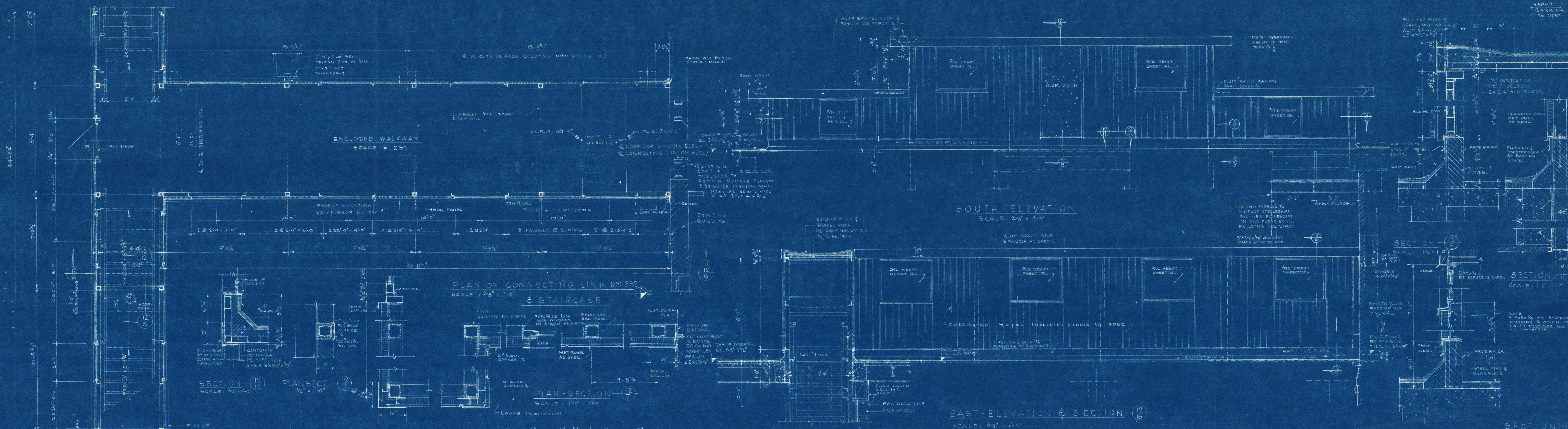


ADDITION TO SHOEMAKER HALL  
ST. CLOUD STATE COLLEGE  
ST. CLOUD

FRANK W. JACKSON & ASSOCIATES, INC.  
ARCHITECTS & ENGINEERS  
ST. CLOUD, MINNESOTA

DATE: 3-2-28  
APPROVED BY: *John J. Hall*

PROJECT NO. 516  
SHEET NO. 11



ADDITION TO SHOEMAKER HALL  
ST. CLOUD STATE COLLEGE  
ST. CLOUD, MINNESOTA

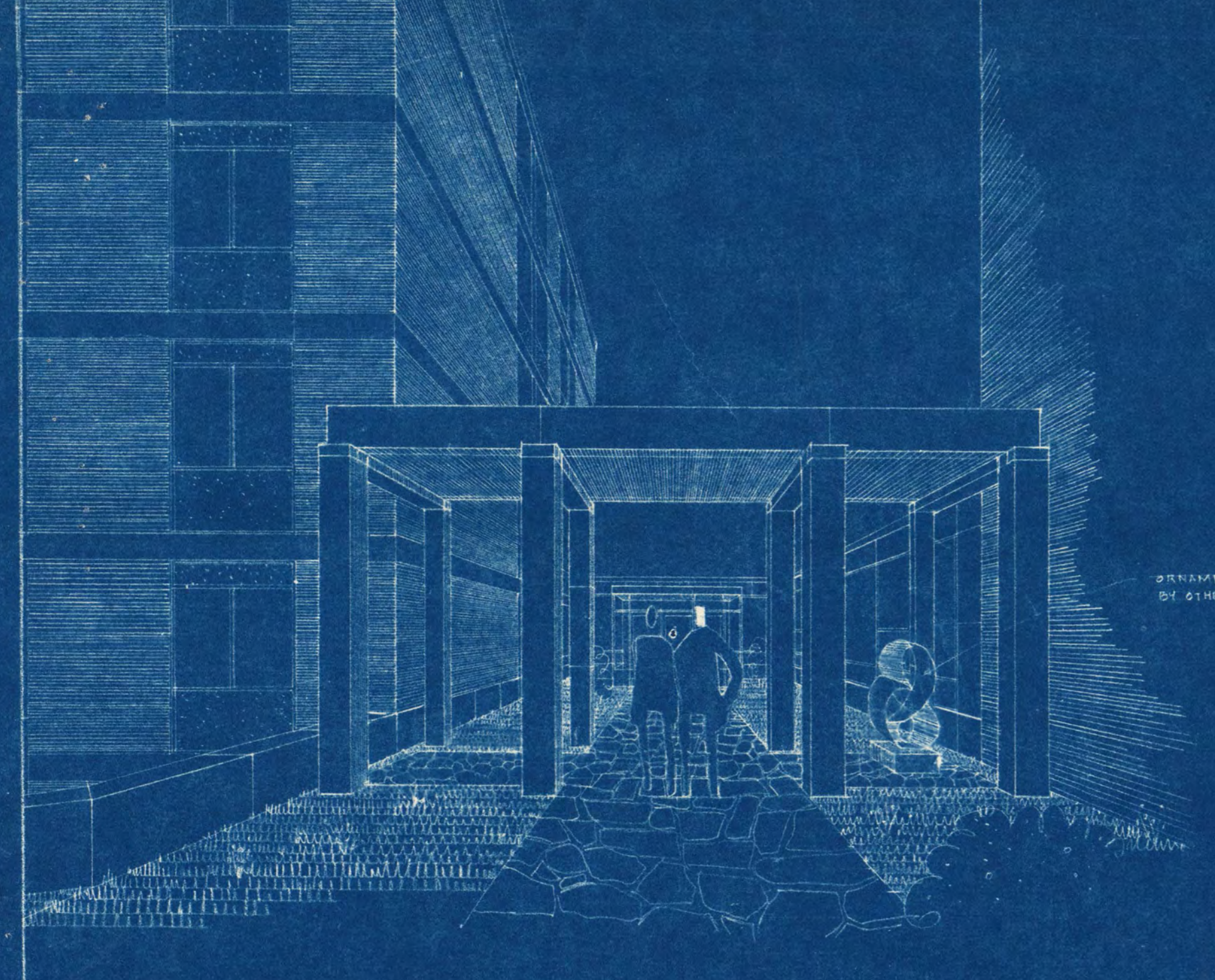
FRANK W. JARROLD & ASSOCIATES, INC.  
ST. CLOUD, MINNESOTA

APPROVED BY: *[Signature]*

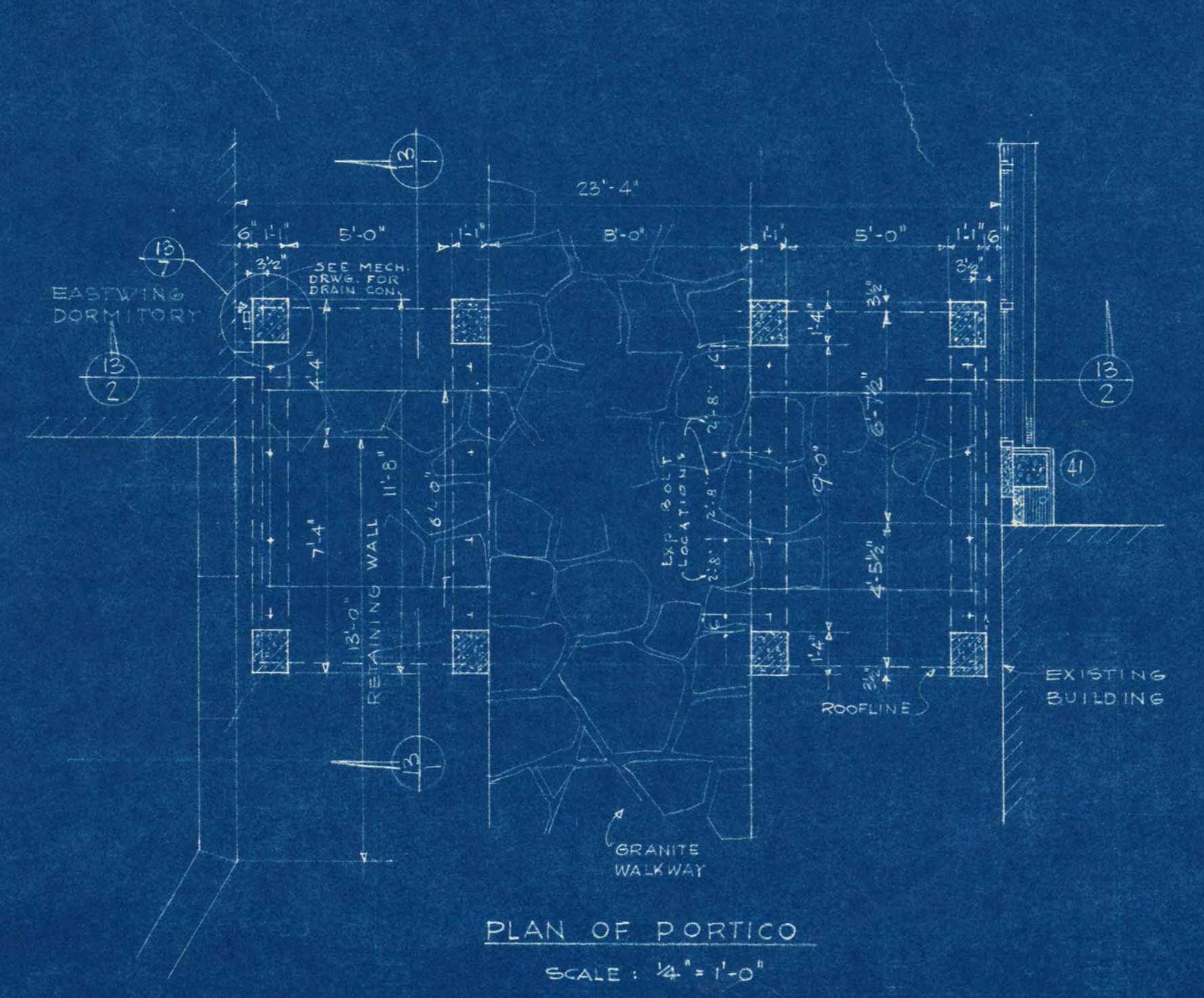
DATE: 10-25-57

SCALE: 3/8" = 1'-0"

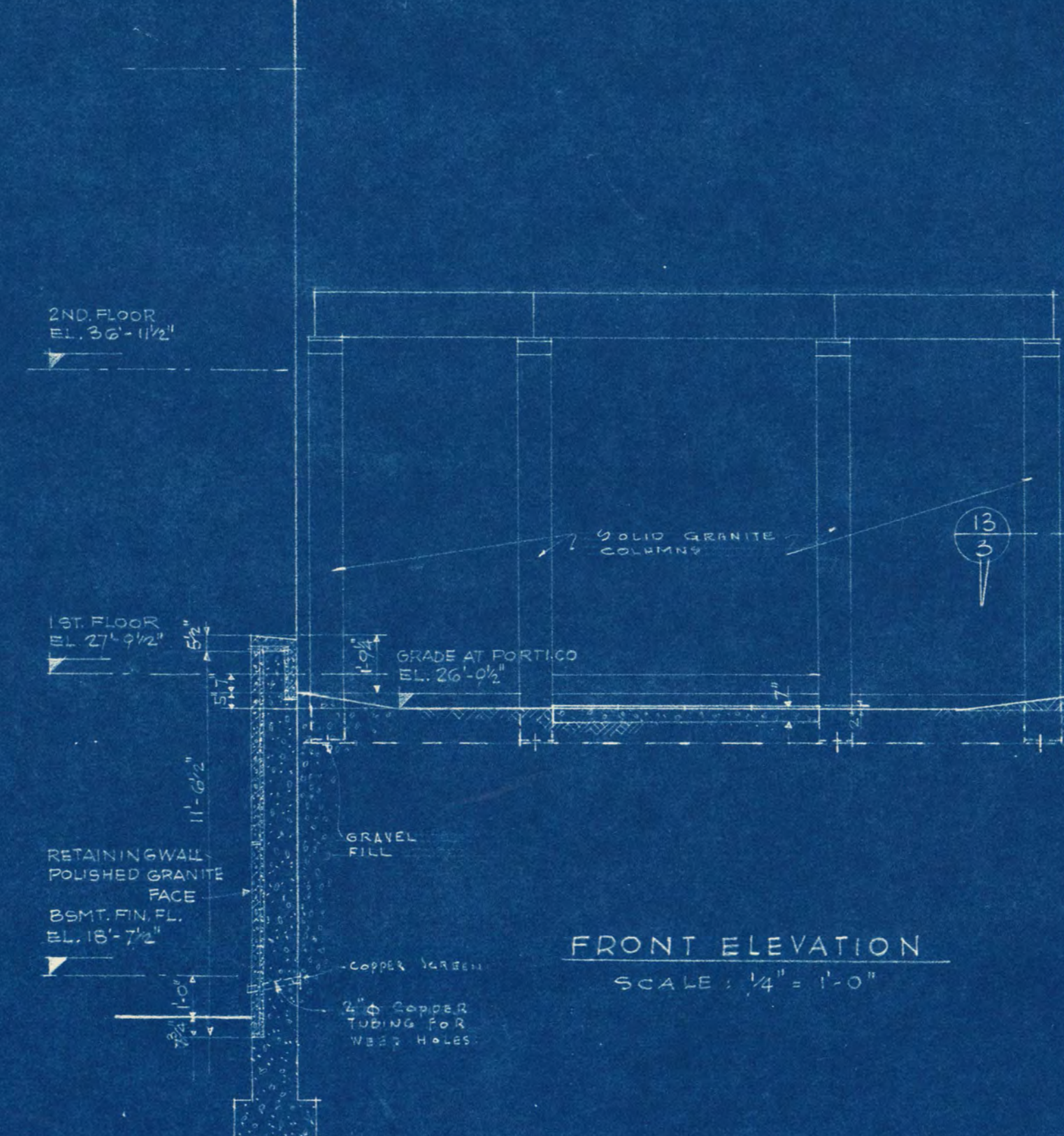
12  
3  
ST. CLOUD  
P-12



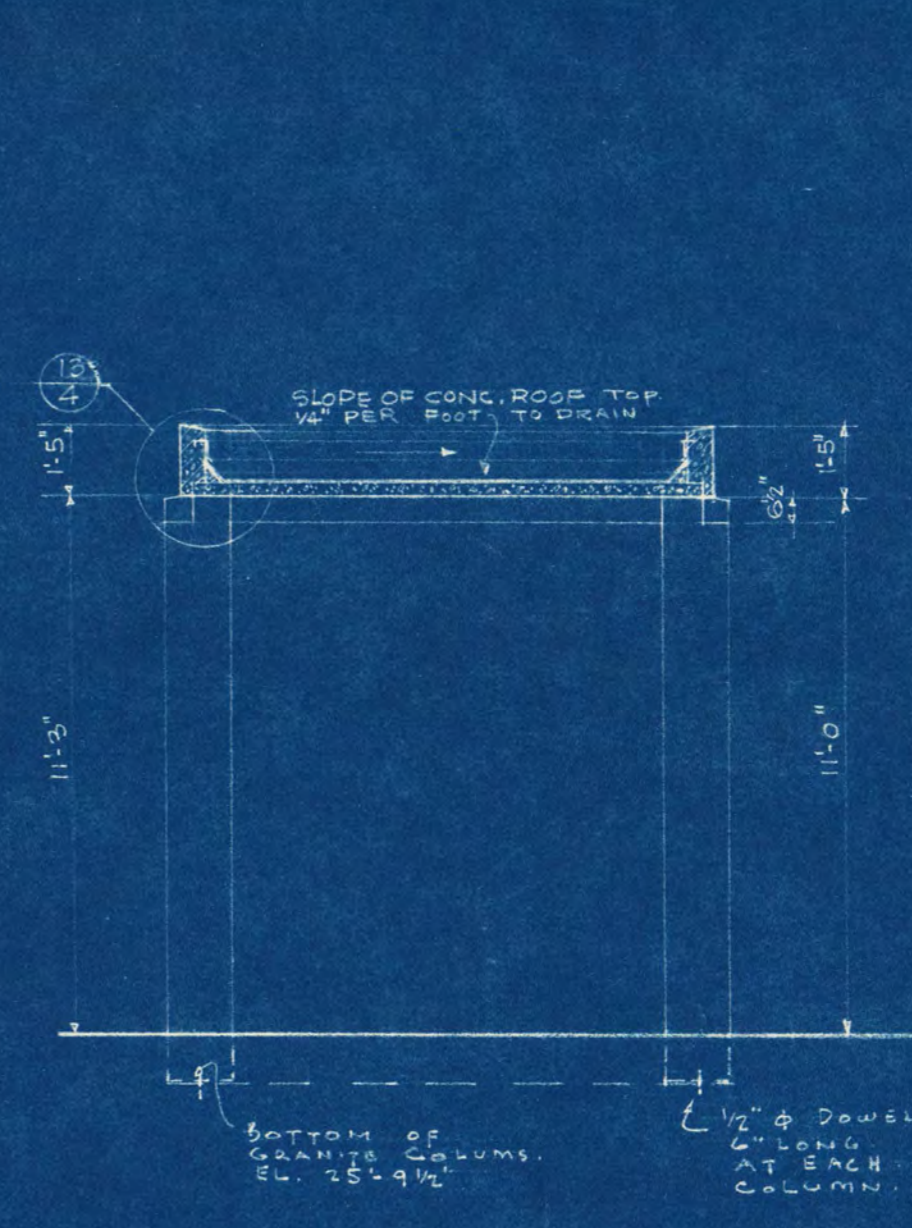
PERSPECTIVE OF PORTICO



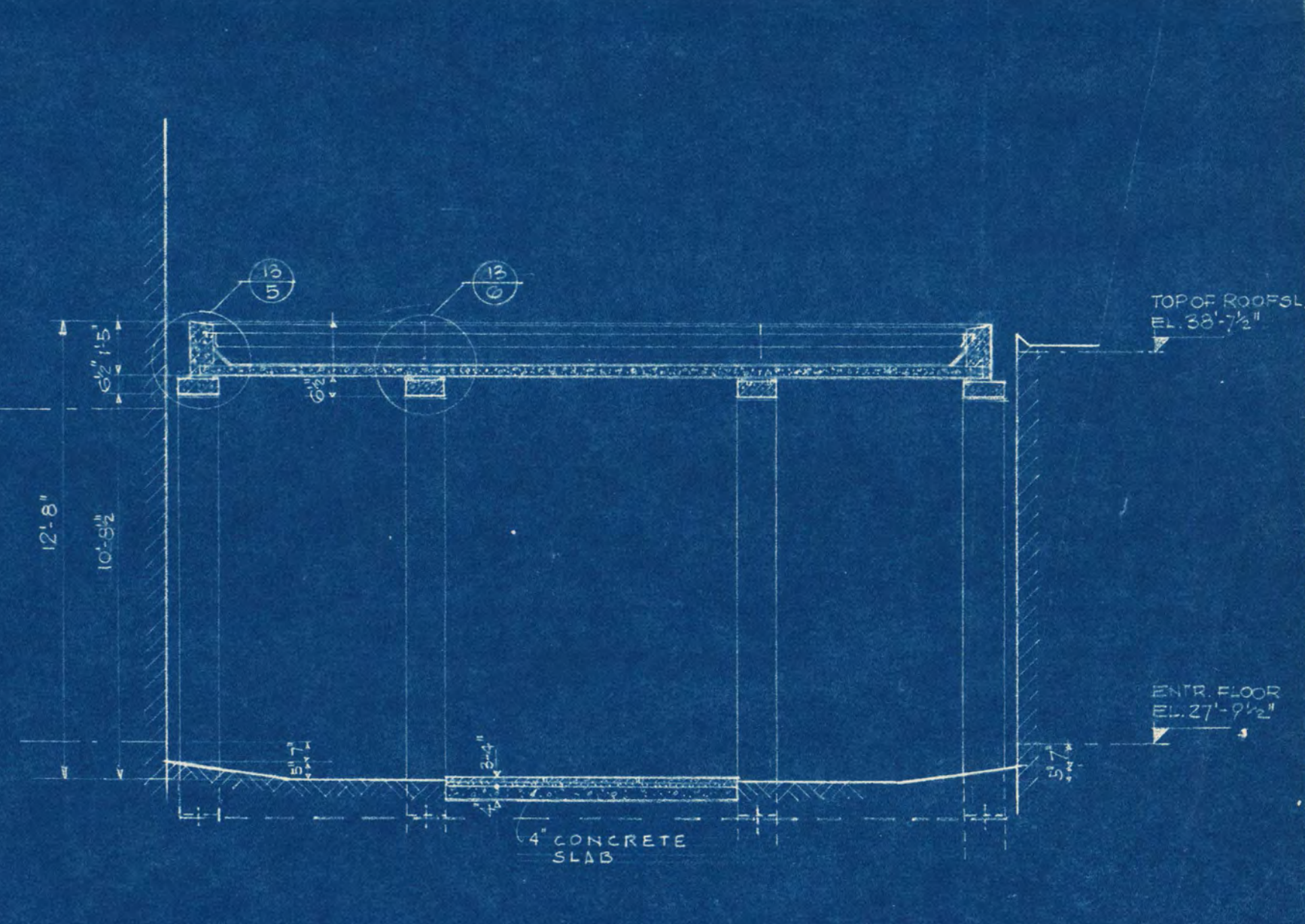
PLAN OF PORTICO  
SCALE: 1/8" = 1'-0"



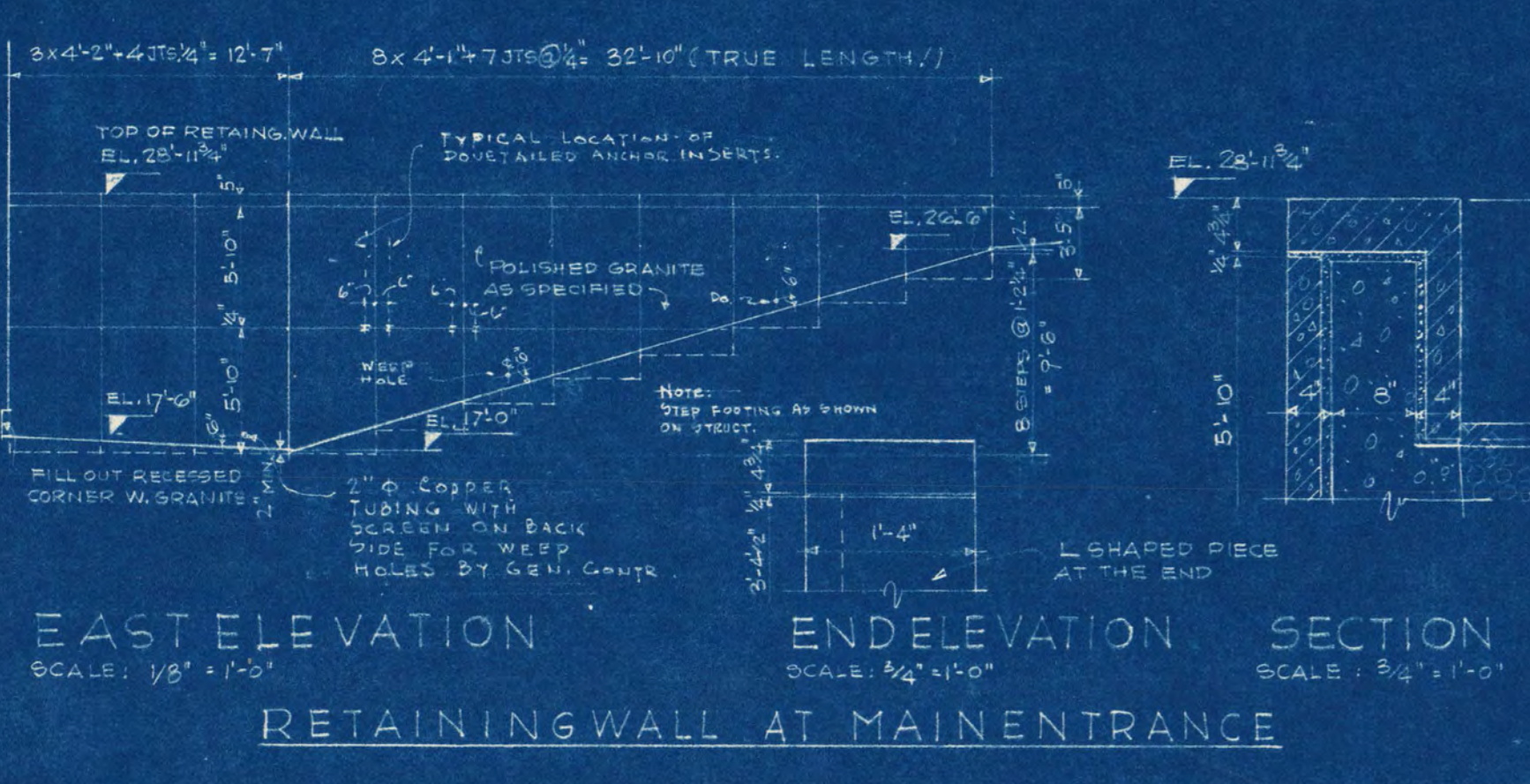
FRONT ELEVATION  
SCALE: 1/4" = 1'-0"



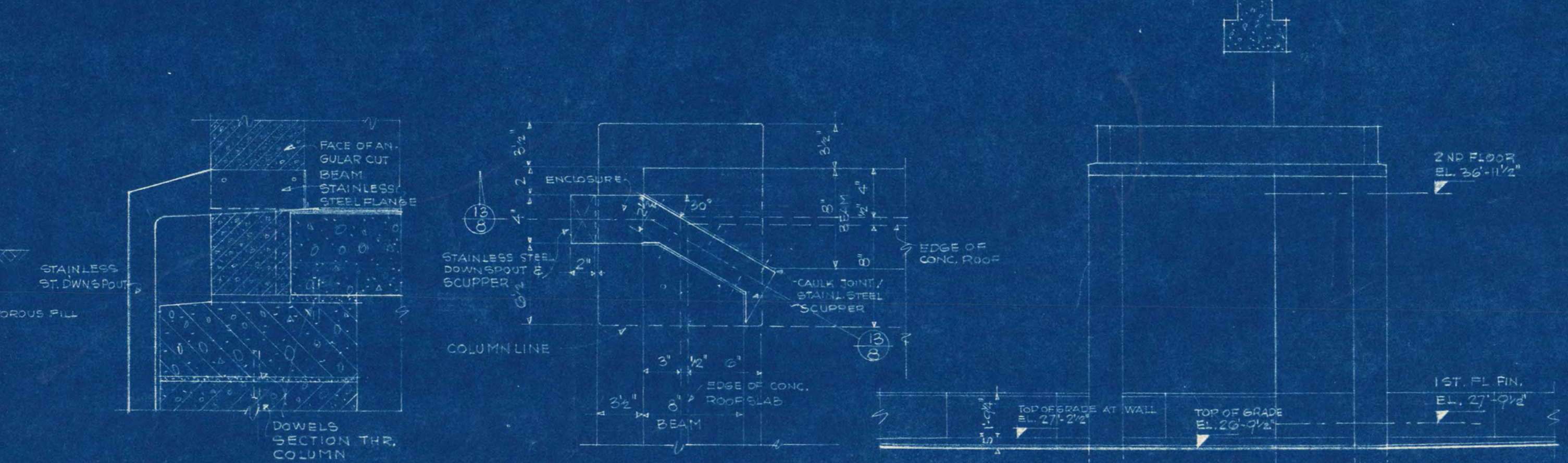
SECTION B-B  
SCALE: 1/8" = 1'-0"



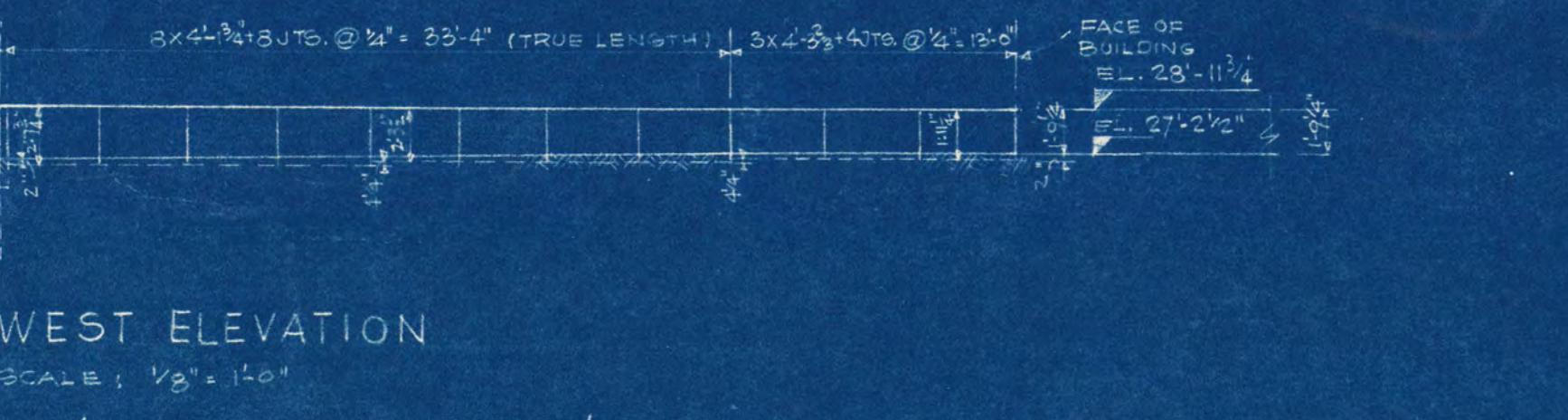
SECTION C-C  
SCALE: 1/8" = 1'-0"



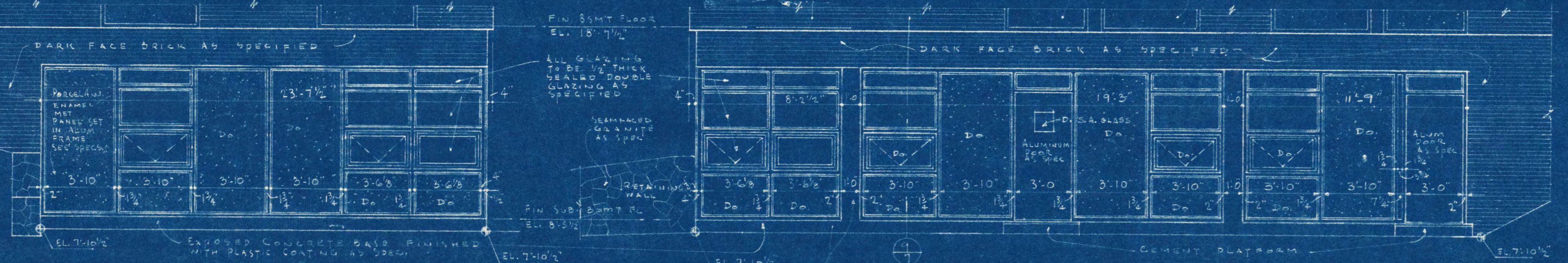
EAST ELEVATION SCALE: 1/8" = 1'-0"  
E. ELEVATION SCALE: 1/8" = 1'-0"



SECTION 12-13 SCALE: 1/2" = 1'-0"  
ROOF DRAINAGE

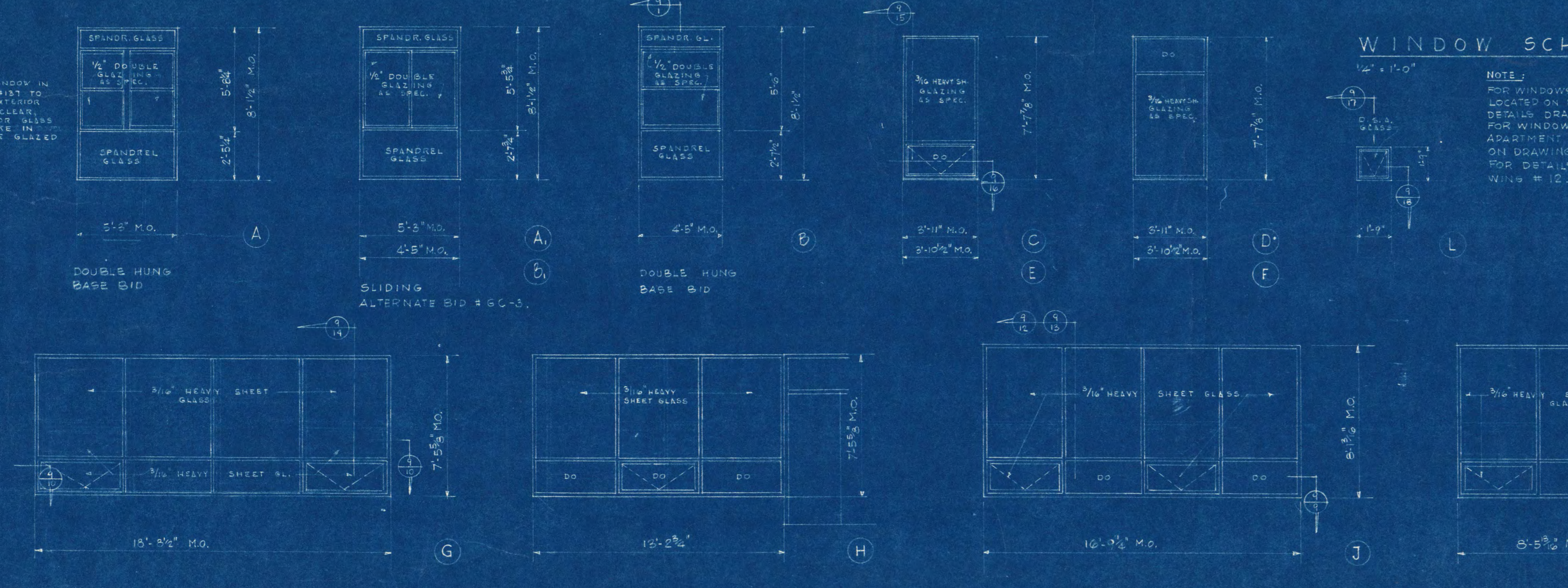


WEST ELEVATION  
SCALE: 1/8" = 1'-0"

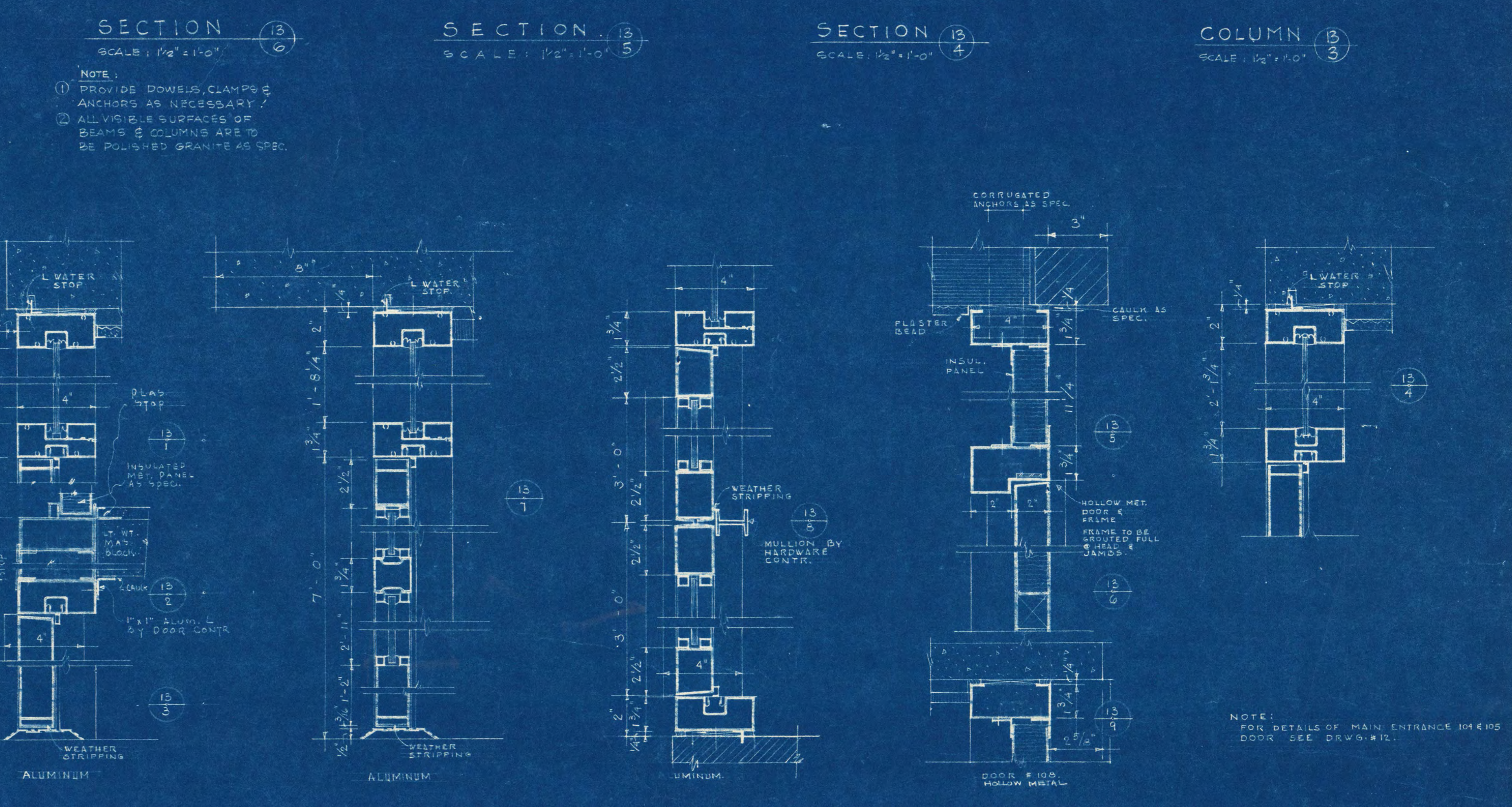


PART SOUTH ELEVATION SCALE: 1/4" = 1'-0"  
PART EAST ELEVATION SCALE: 1/4" = 1'-0"

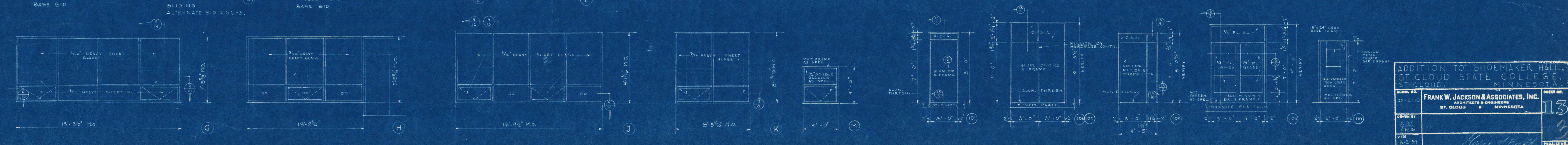
NOTE: ALUMINUM FRAMES FOR WINDOWS & METAL PANELS TO BE SIMILAR TO FRAME SECTIONS AS USED IN DINING HALLS RECREATION ROOM DETAILS OF WHICH ARE SHOWN ON DRAWING NO. 11 & 12. 1/2" THICK SEALED DOUBLE GLASSING AS SPECIFIED.



WINDOW SCHEDULE  
SCALE: 1/2" = 1'-0"



DOOR FRAMES & DOORS.  
SCALE: 3/8" = 1'-0"



EXTERIOR DOOR SCHEDULE  
SCALE: 1/4" = 1'-0"

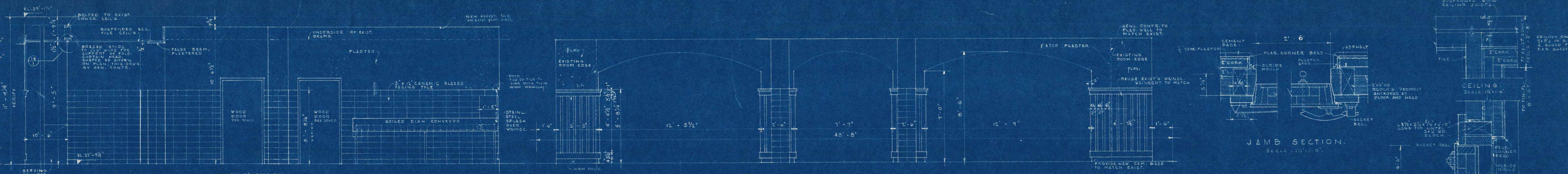
ADDITION TO SHOEMAKER HALL,  
ST. CLOUD STATE COLLEGE,  
ST. CLOUD, MINNESOTA.

CONTR. NO. 30-2110  
FRANK W. JACKSON & ASSOCIATES, INC.  
MINNEAPOLIS, MINNESOTA

DRAWN BY: [Signature]  
DATE: 3-2-51  
L'ORISE

APPROVED BY: [Signature]  
APPROVED BY: [Signature]  
APPROVED BY: [Signature]

PROJECT NO. 13  
SHEET NO. 13  
ST. CLOUD, MINN. 3-15-51

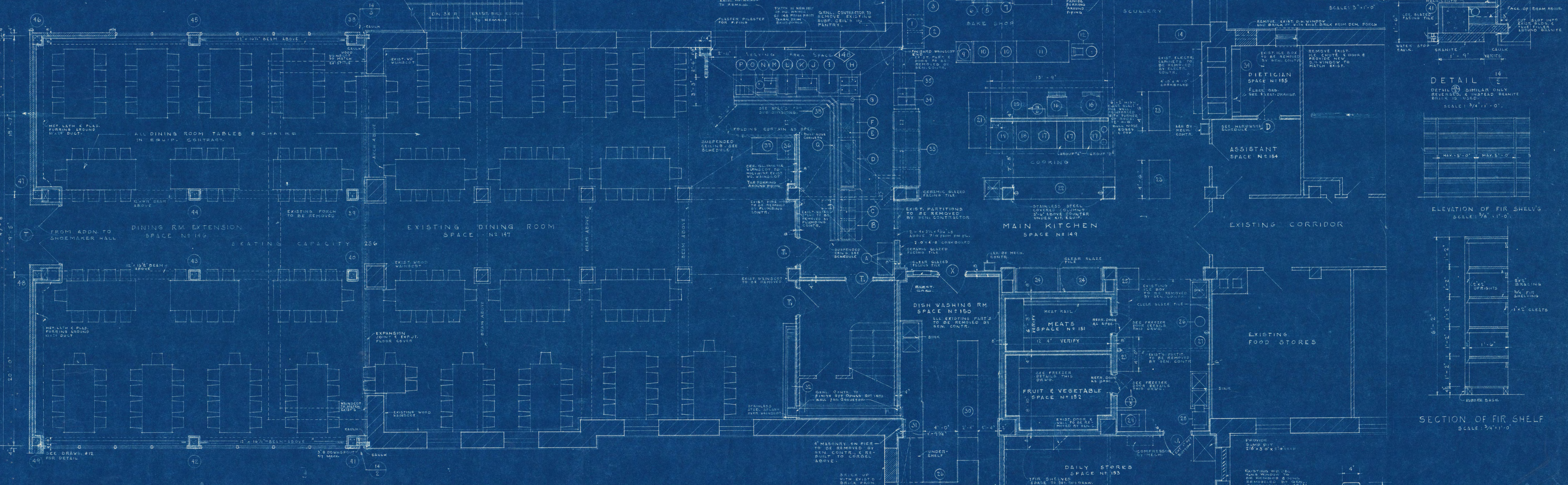
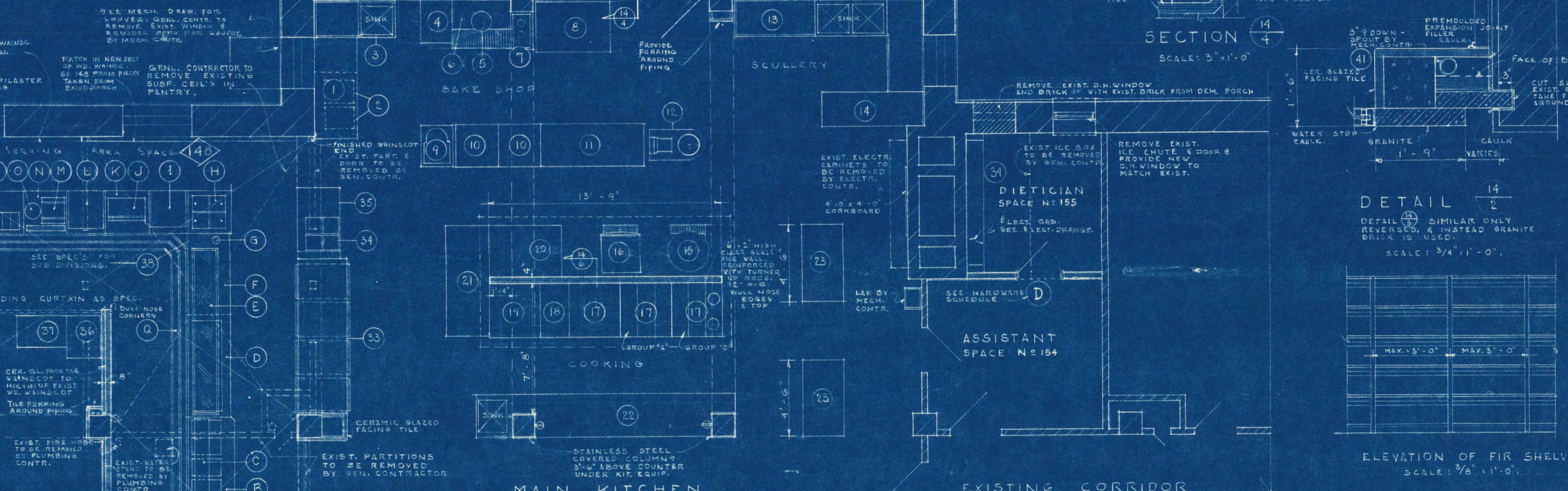
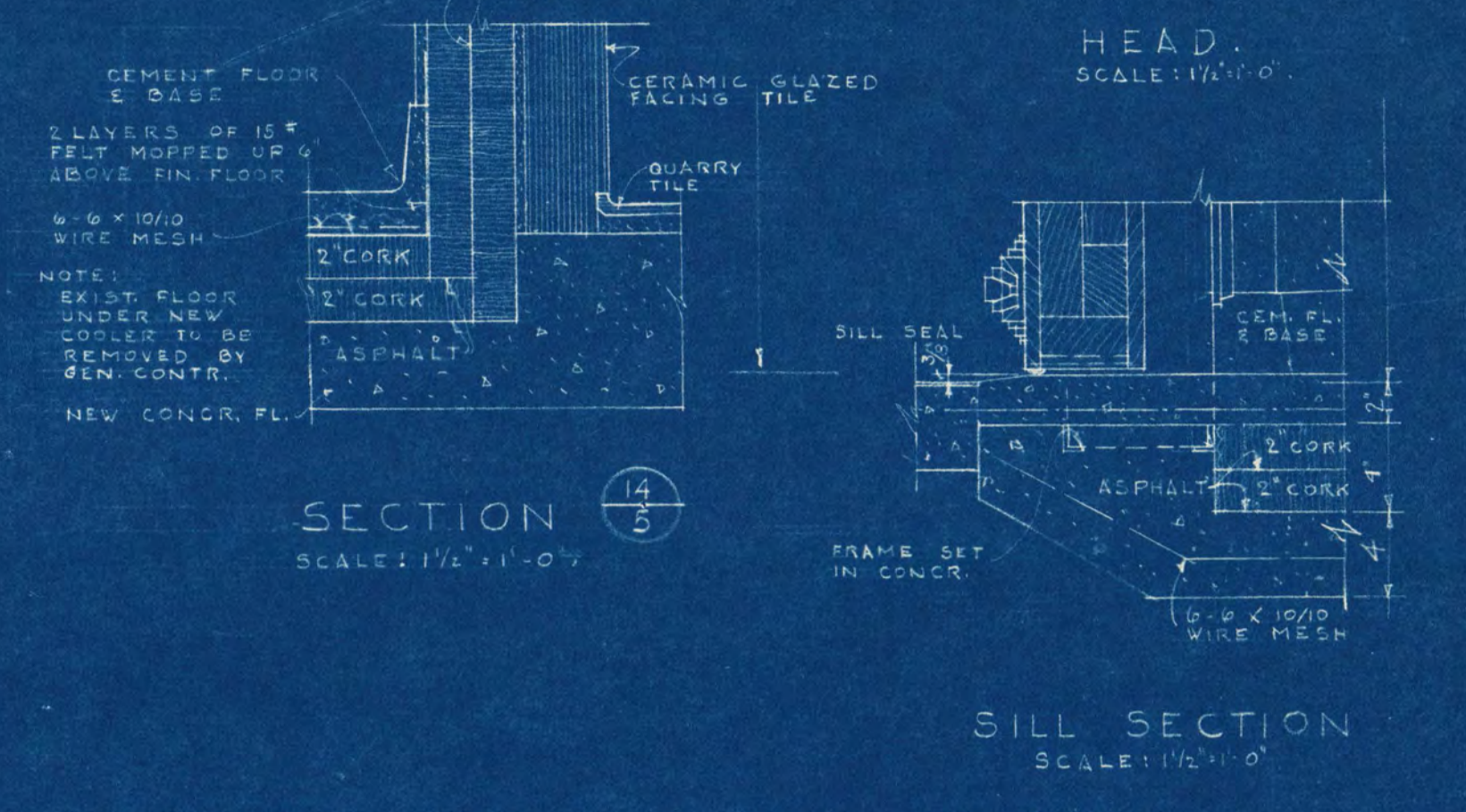
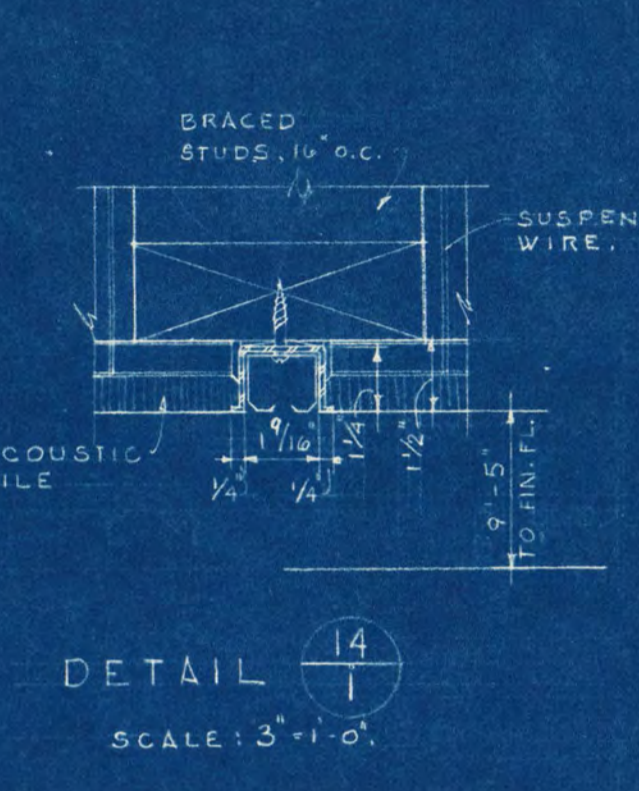


NORTH ELEVATION, SP. 147.  
SCALE: 3/8" = 1'-0"

NORTH ELEVATION OF DINING RM. ADD, SP. #146.  
SCALE: 3/8" = 1'-0"

SCHEDULE OF KITCHEN EQUIPMENT:

ITEM	FURNISHED BY	ITEM	FURNISHED BY	ITEM	FURNISHED BY	ITEM	FURNISHED BY	ITEM	FURNISHED BY
1 BAKERS WORK TABLE	KITCH. EQUIP. CO.	11 LENDING TABLE	KITCH. EQUIP. CO.	21 WORK TABLE	KITCH. EQUIP. CO.	31 BOILED DISH CONVEYOR	KITCH. EQUIP. CO.	41	
2 PORT. INGREDIENT BIN	"	12 DOUGH MIXER	"	22 COOK'S TABLE	"	32 PASS-THRU HOT & COLD CABINET	"	42	
3 SINK	"	13 SINK	"	23 PORTABLE TABLES	"	33 TOASTER	"	43	
4 PROOF CABINET	"	14 POT & PAN RACK	"	24 FREEZERS	"	34 BACK BAR COUNTER	"	44	
5 STEAM-JACKETED KETTLE	"	15 STEAM KETTLE	"	25 MEAT BLOCK	"	35 LOUVERATORS	"	45	
6 TABLE	"	16 STEAM COOKER	"	26 GARBAGE DISPOSERS	"	36 WATER COOLER	"	46	
7 HOTPLATE	"	17 RANGE	"	27 VEGETABLE PRE-PARATION TABLE	"	37 SERVING COUNTER	"		
8 BAKE OVEN	"	18 FRYER	"	28 VEGETABLE PEELER	"				
9 FOOD MIXER	"	19 BROILER	"	29 VEGETABLE SLICER AND CUTTER	"				
10 PORTABLE STORAGE & COOLING RACKS	"	20 ROAST OVEN	"	30 DISHWASHER AND CONVEYOR	"				



DINING ROOM - & KITCHEN LAYOUT PLAN.

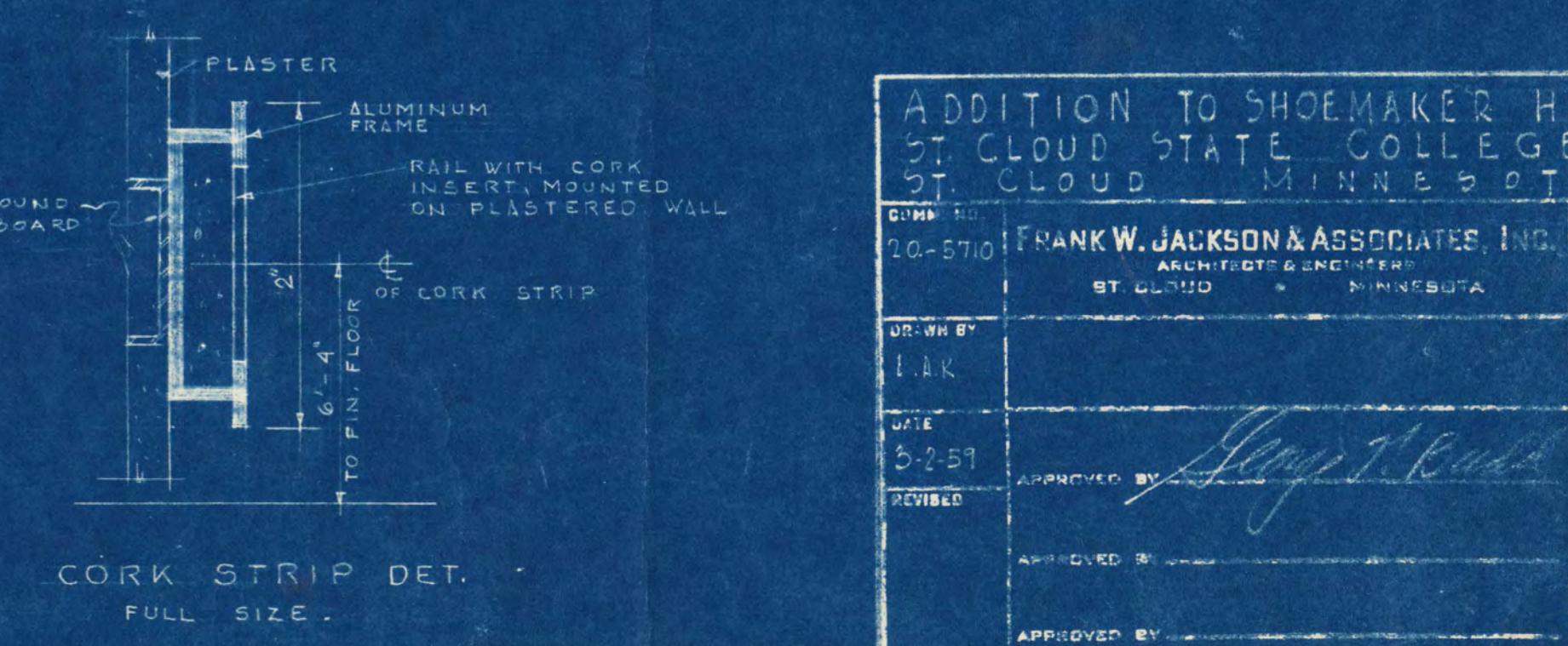
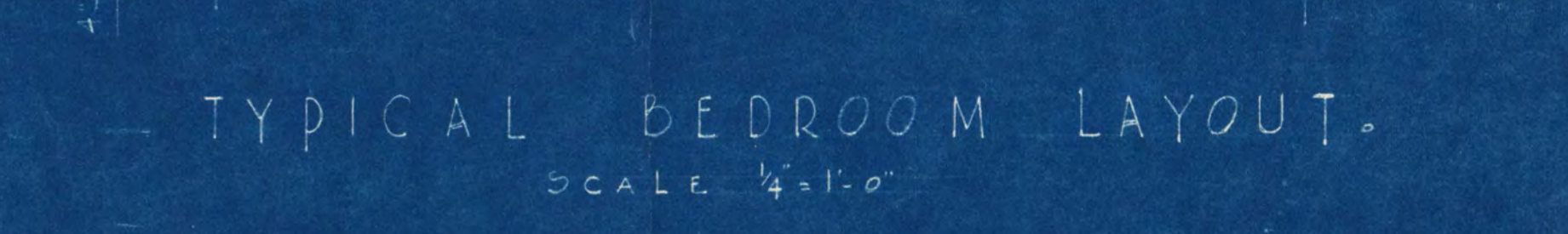
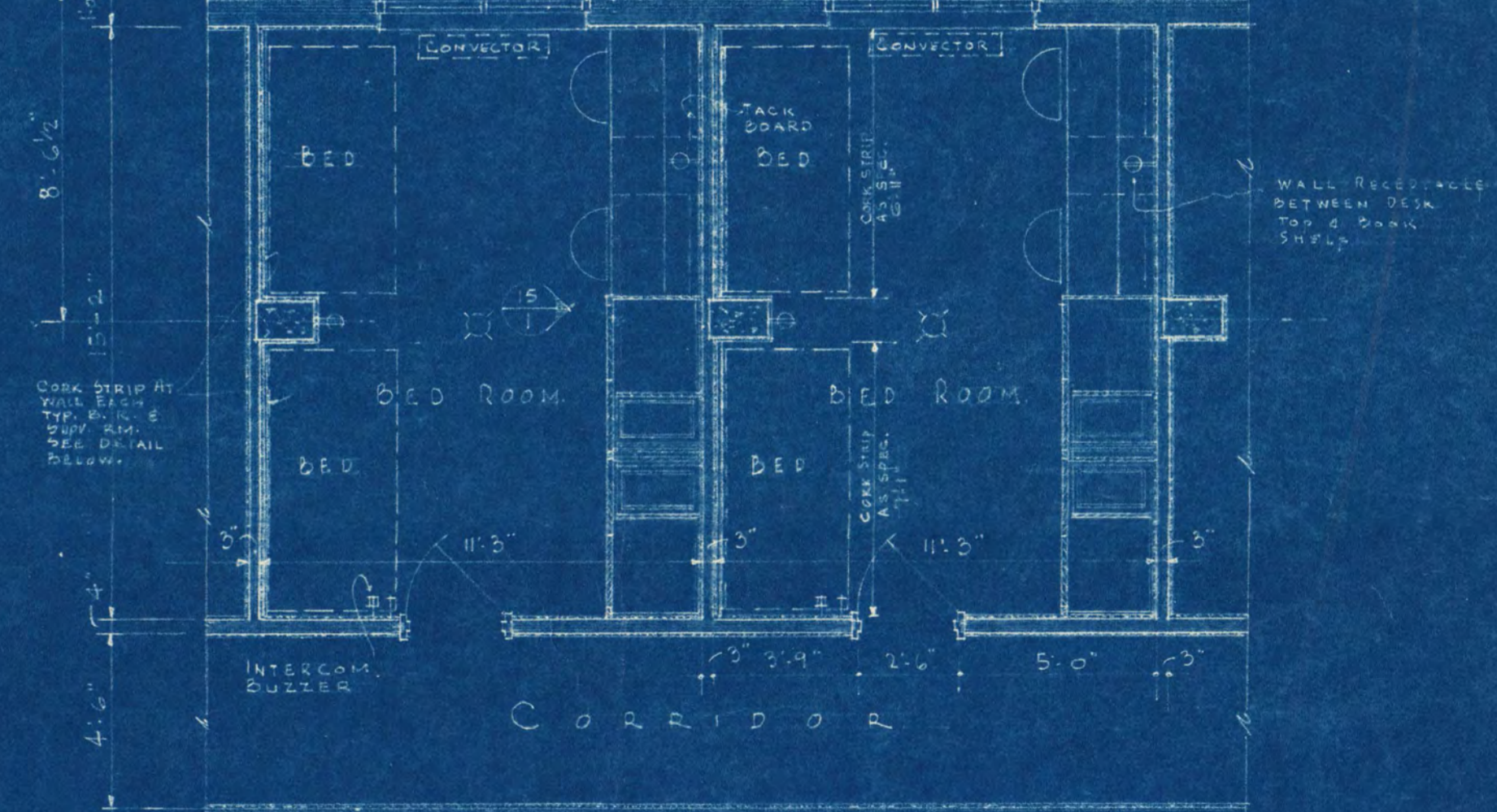
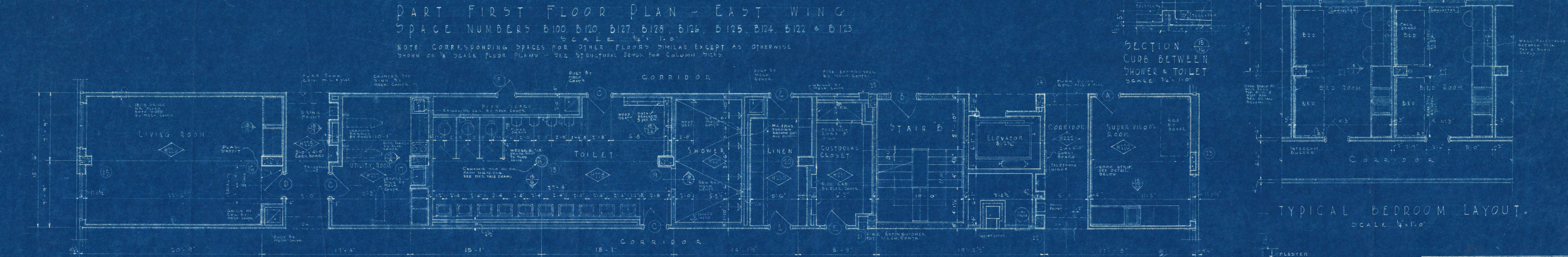
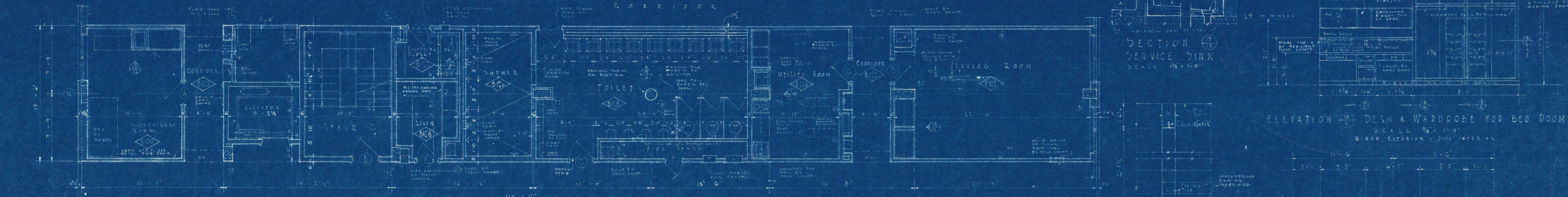
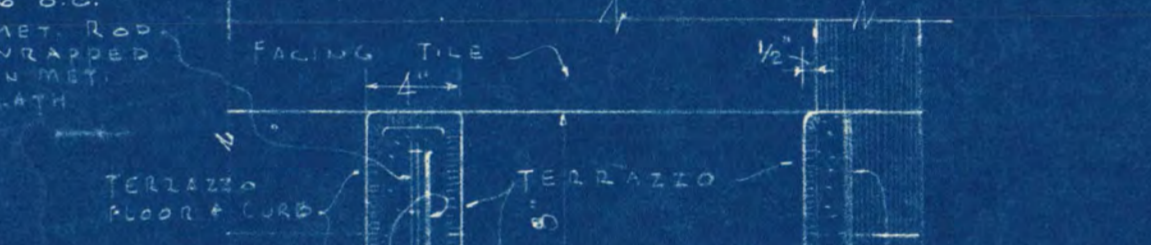
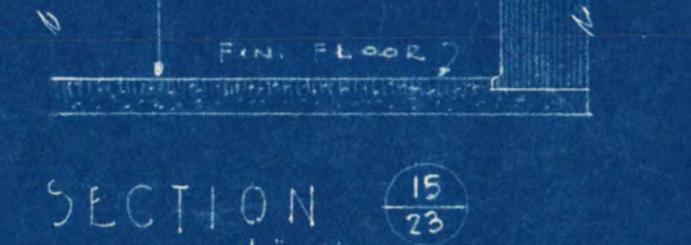
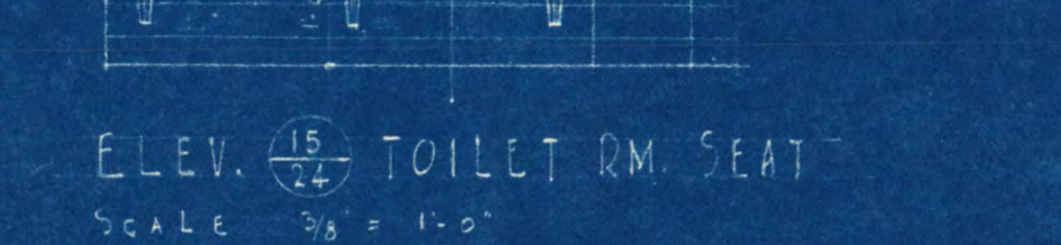
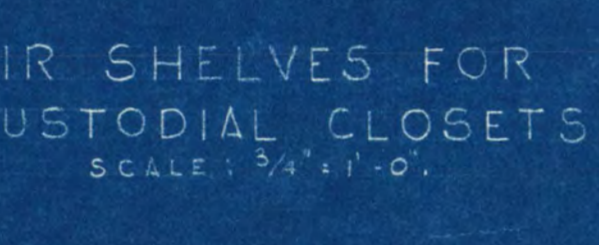
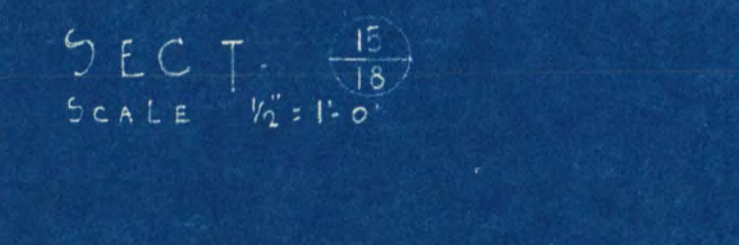
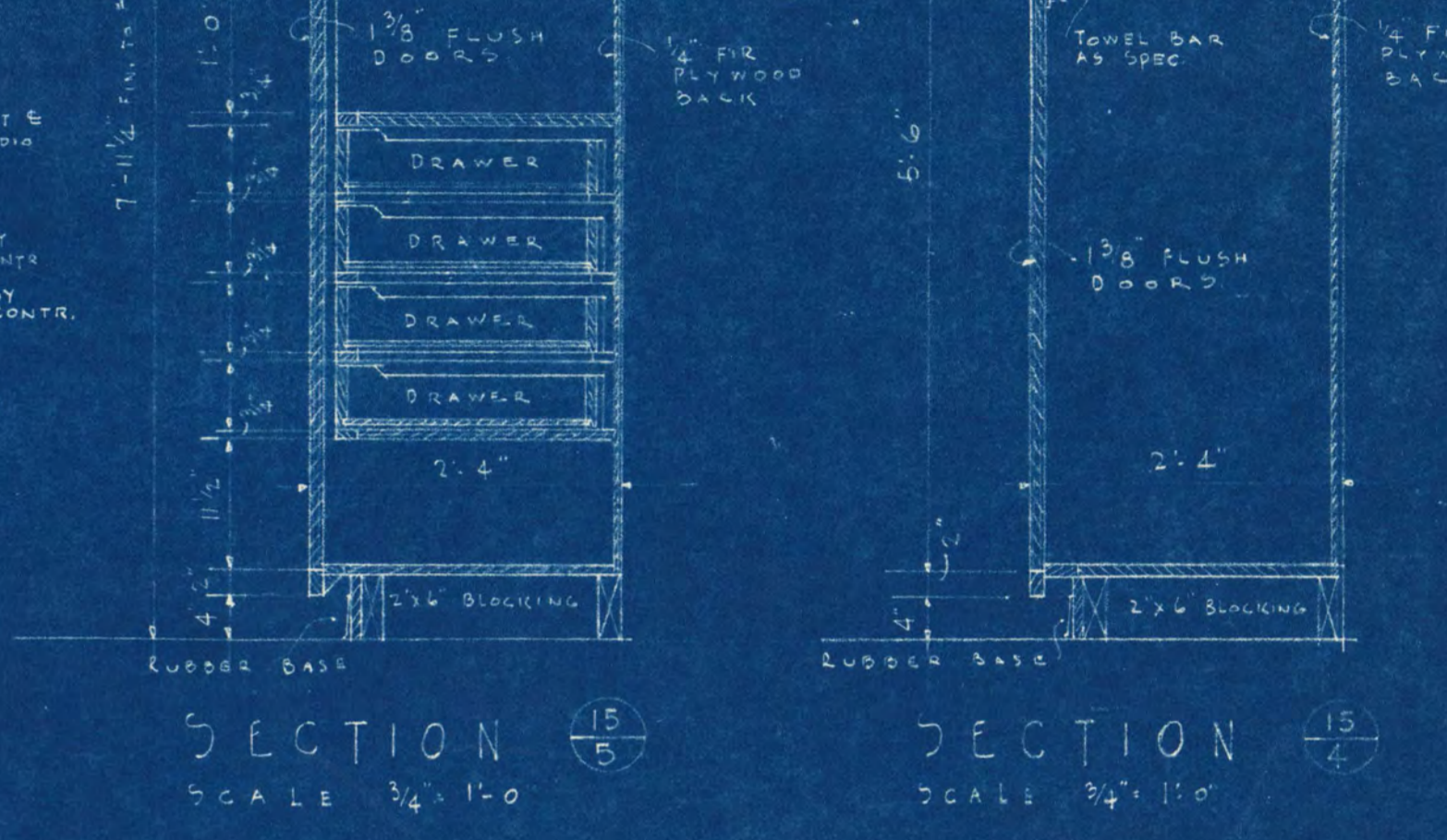
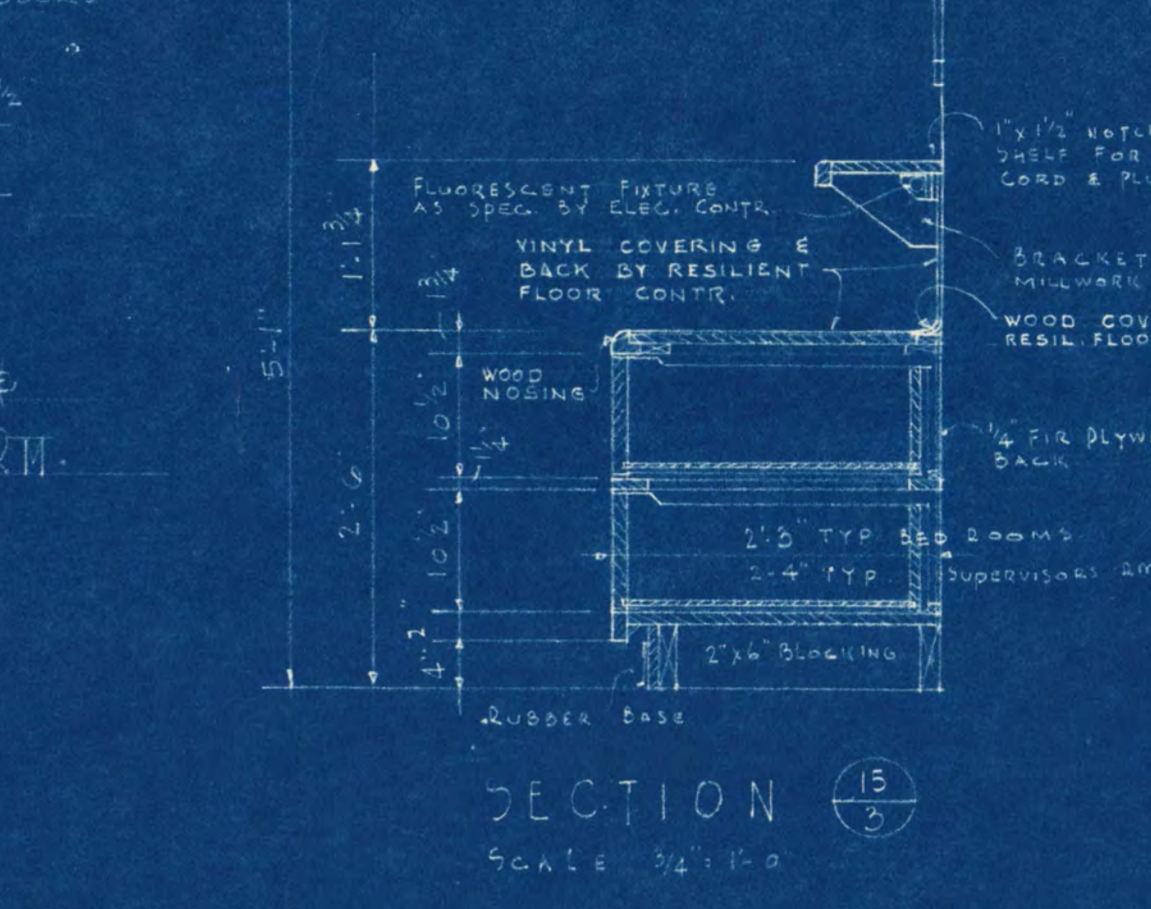
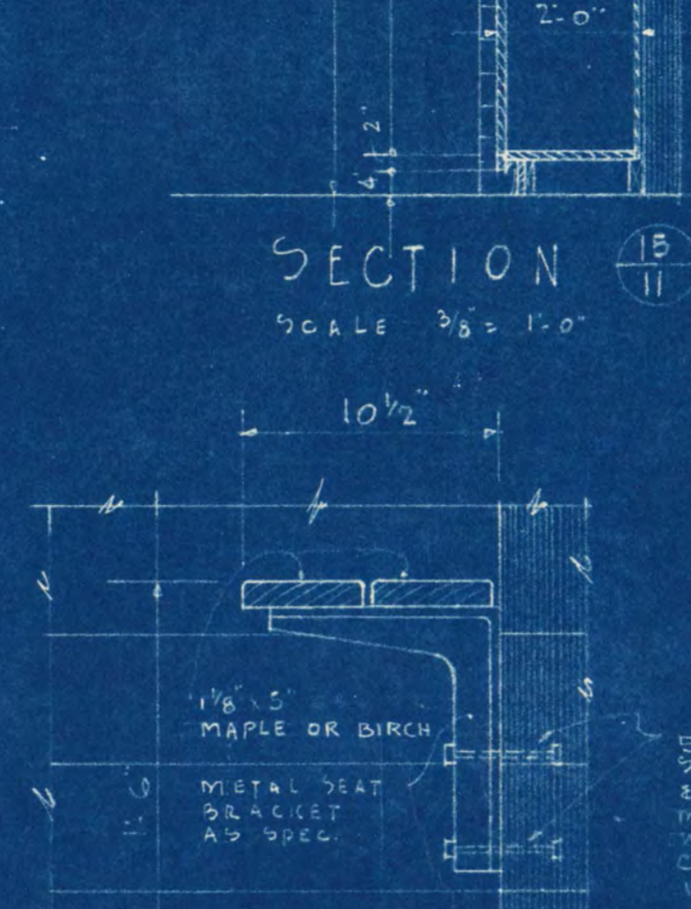
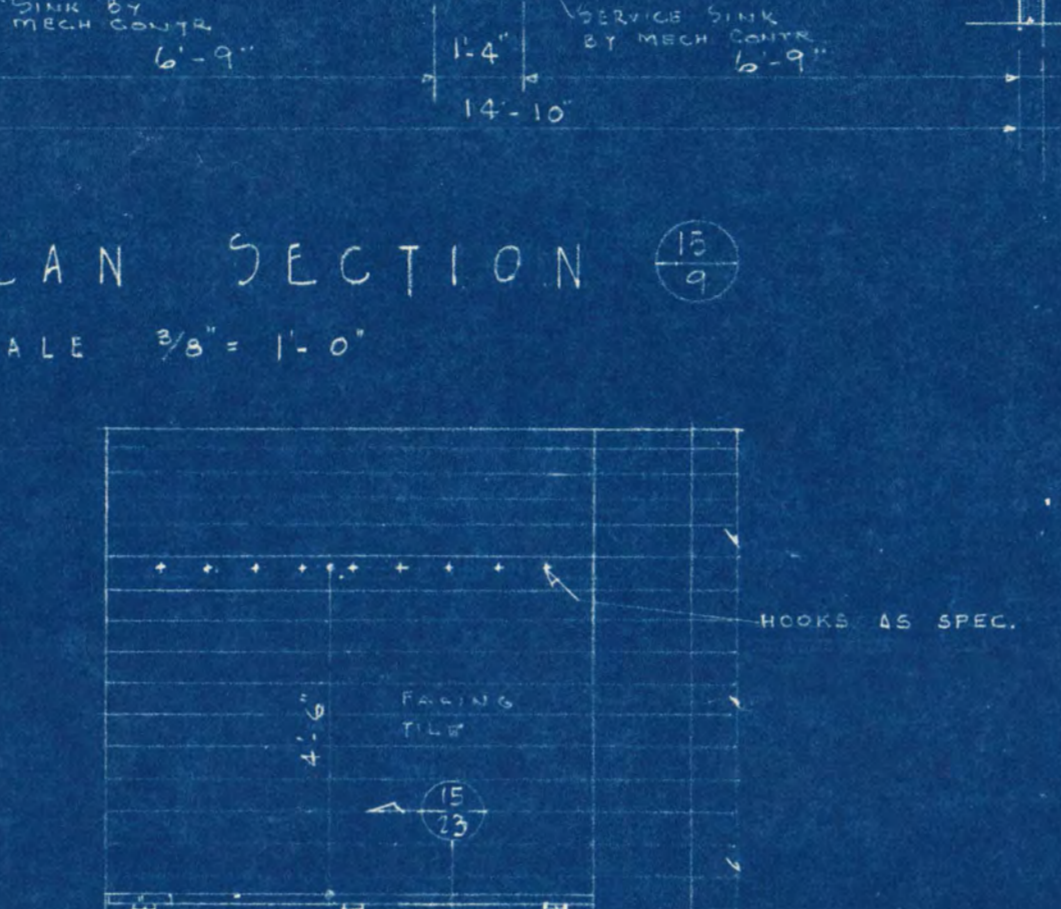
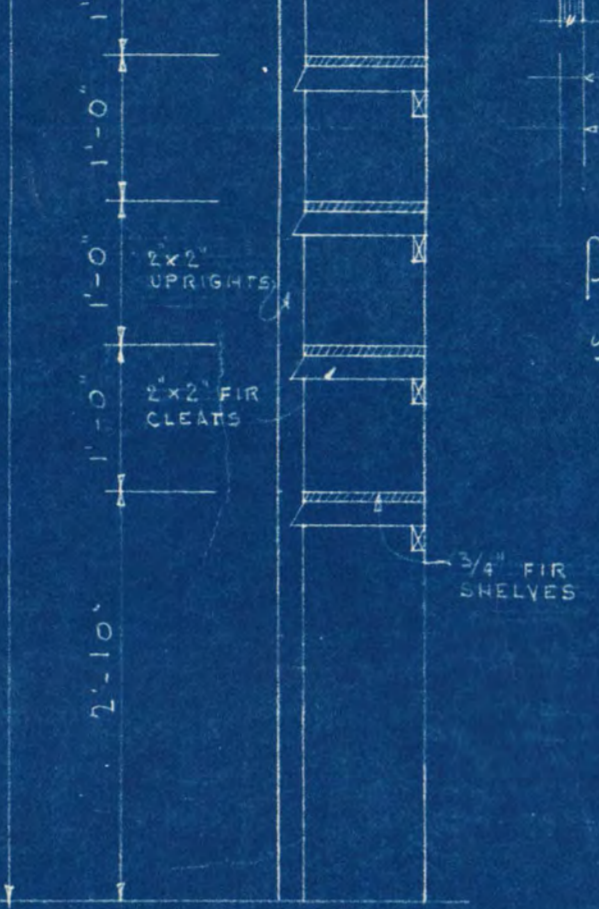
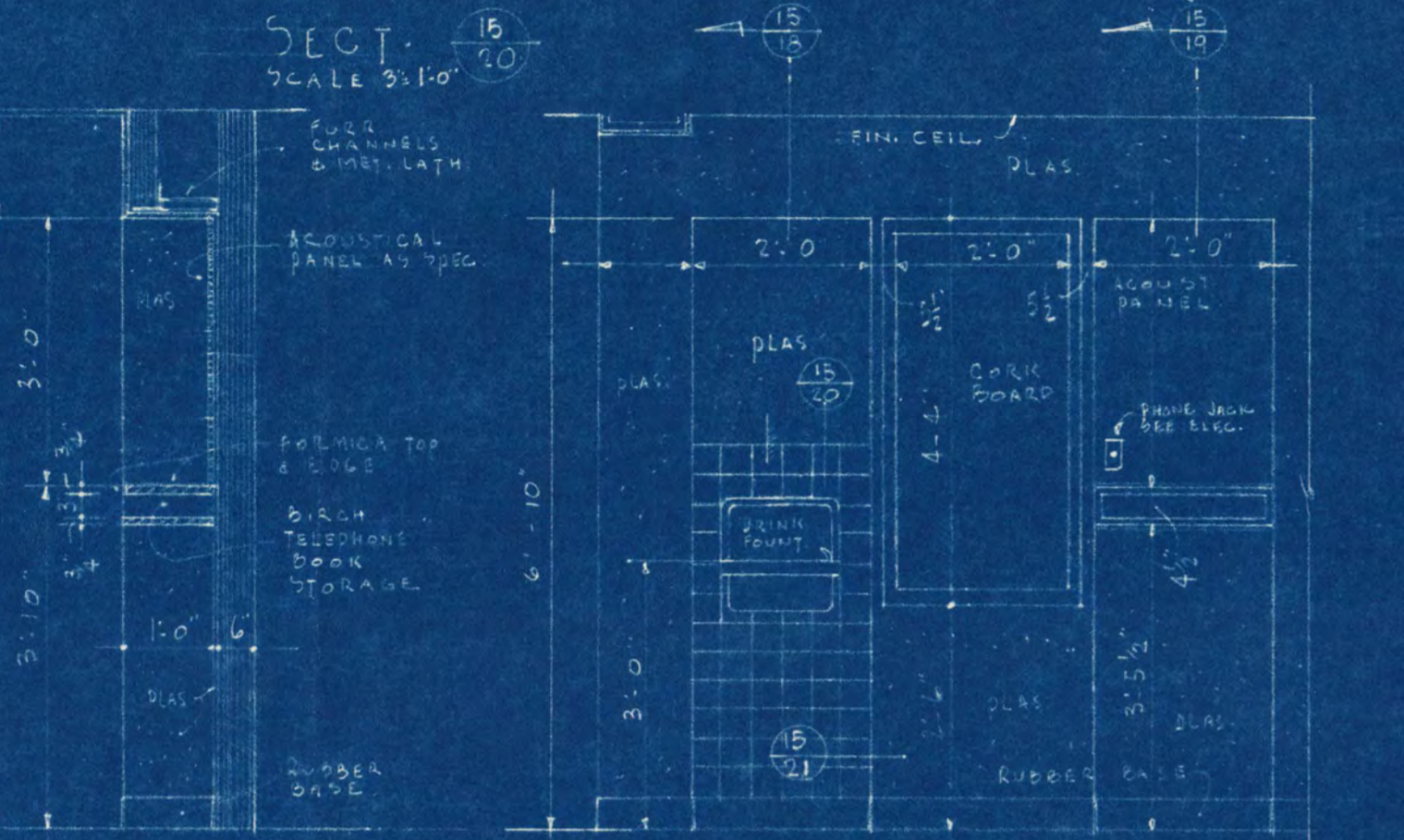
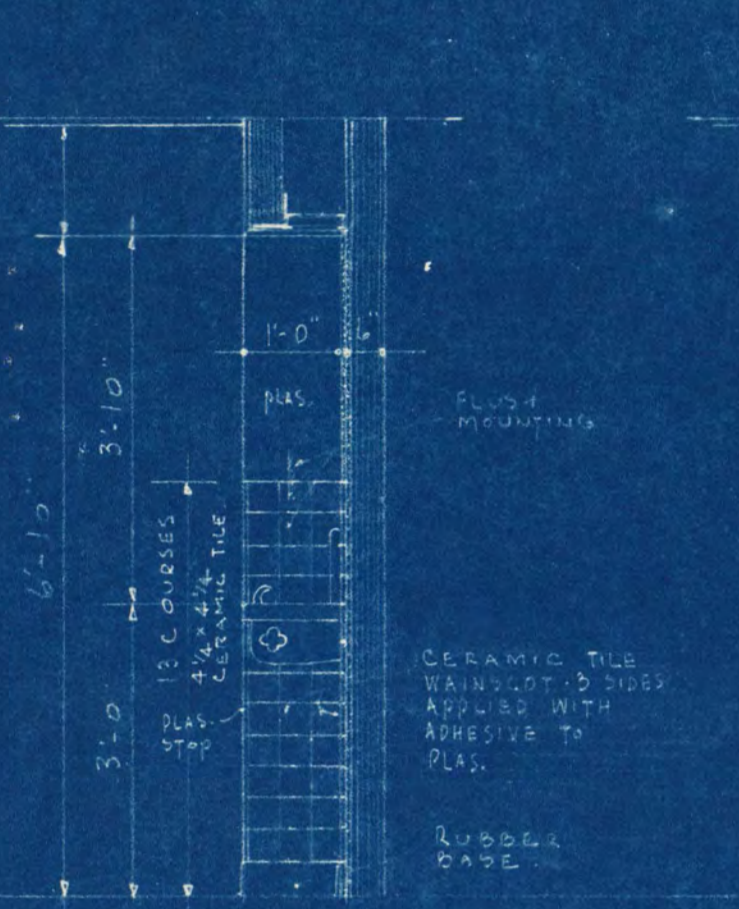
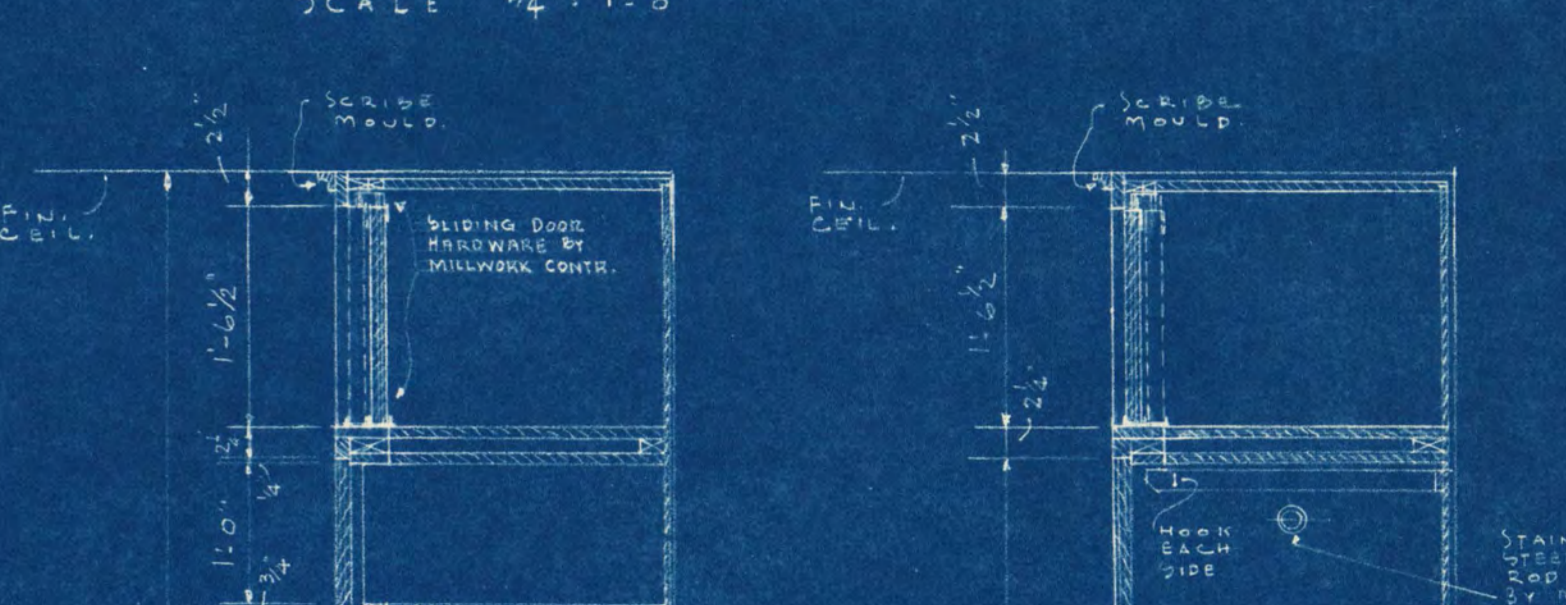
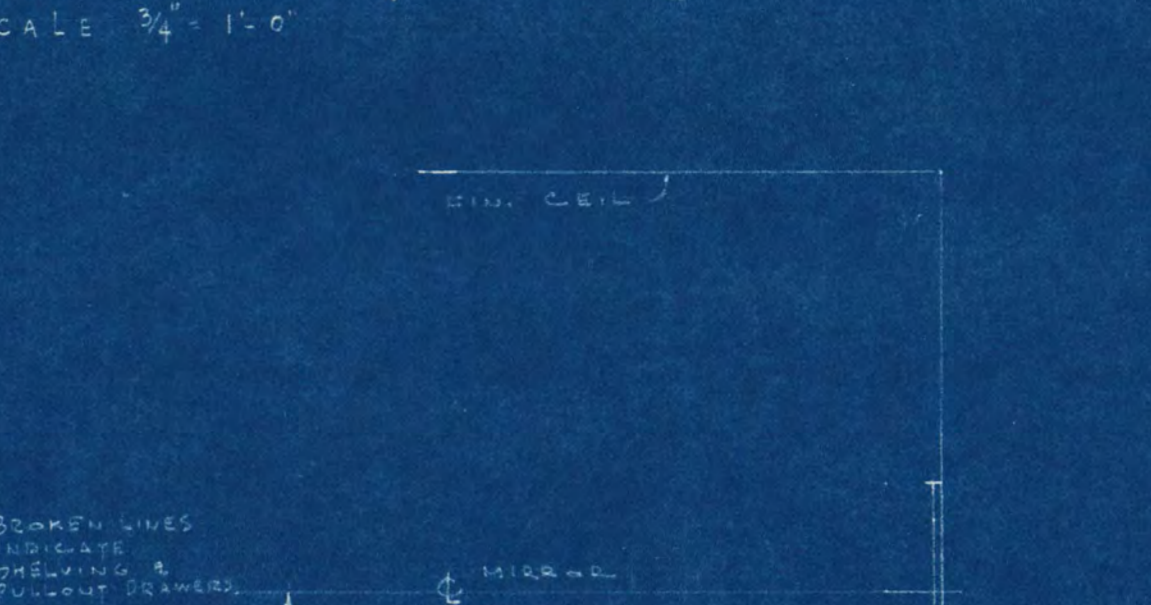
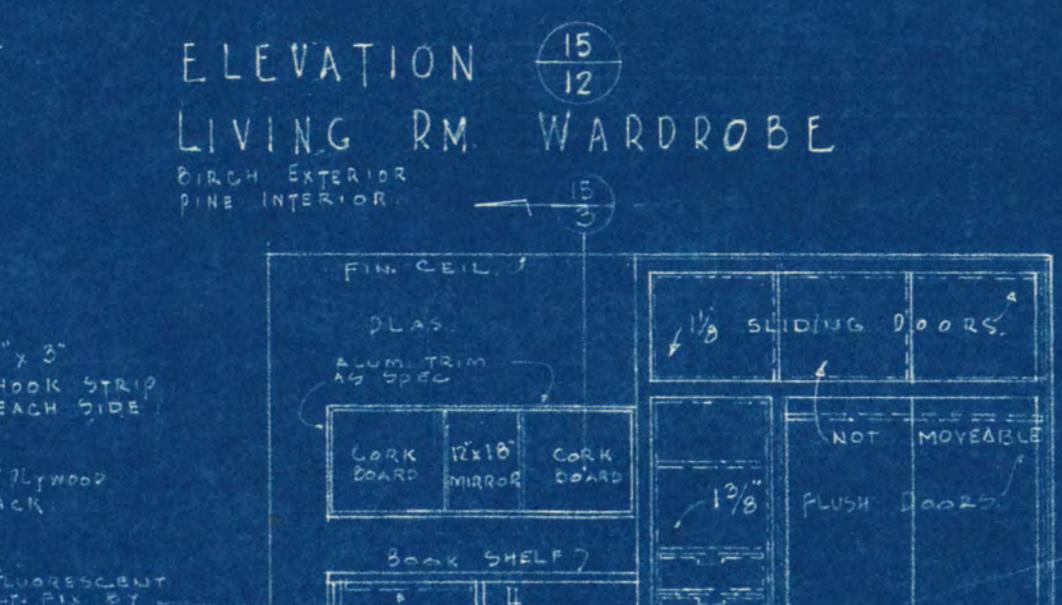
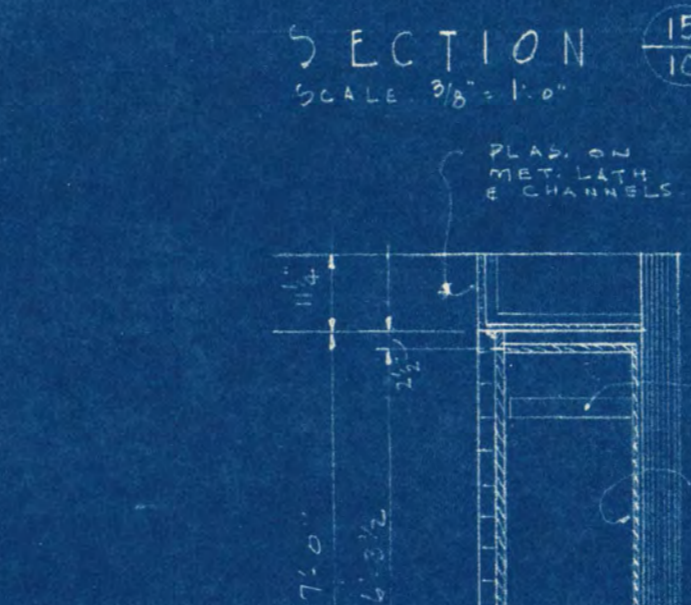
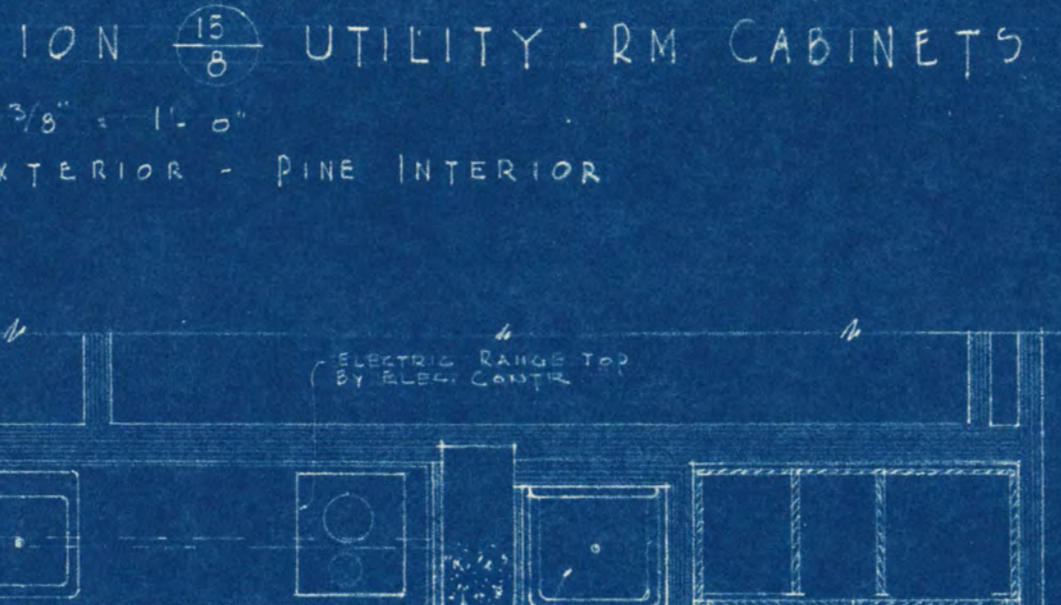
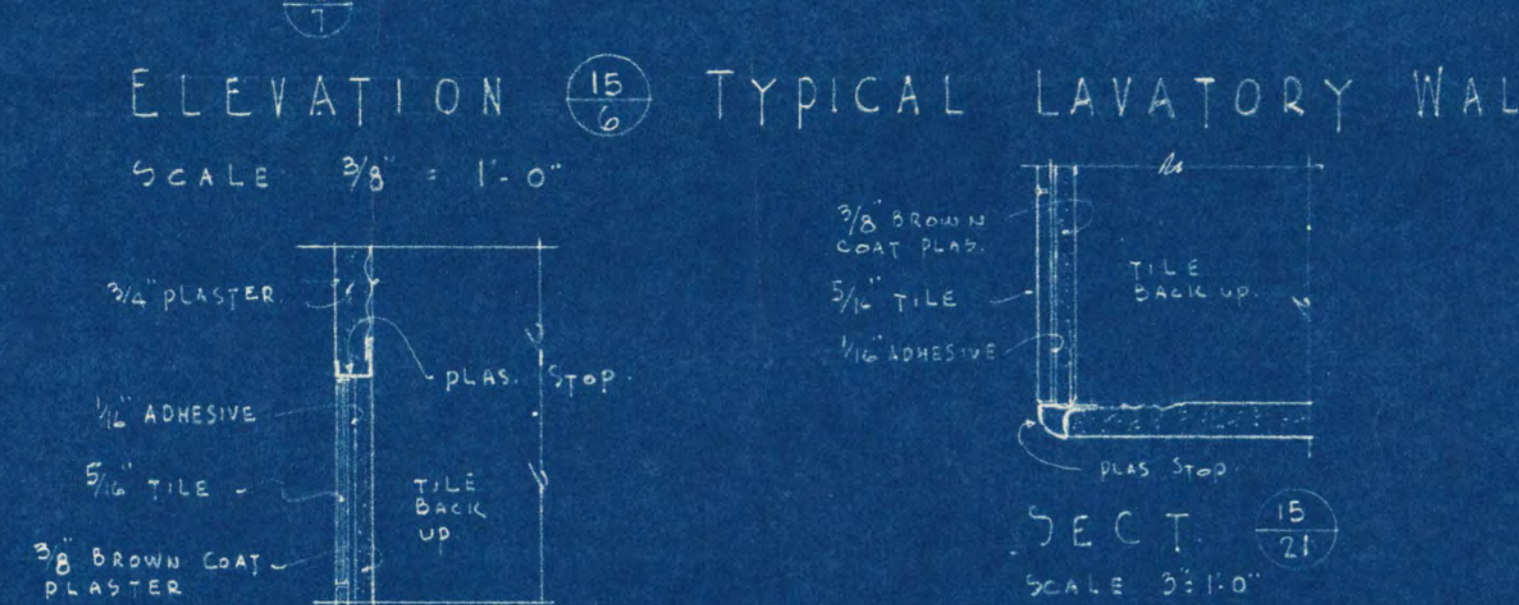
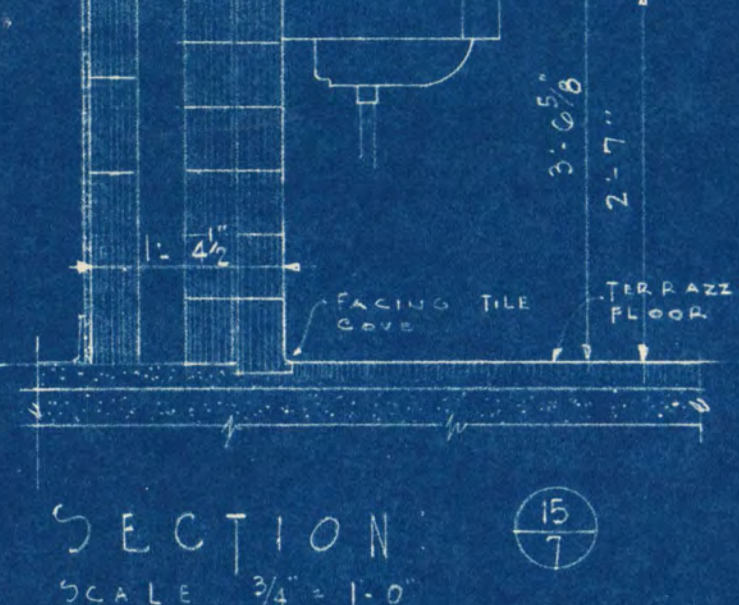
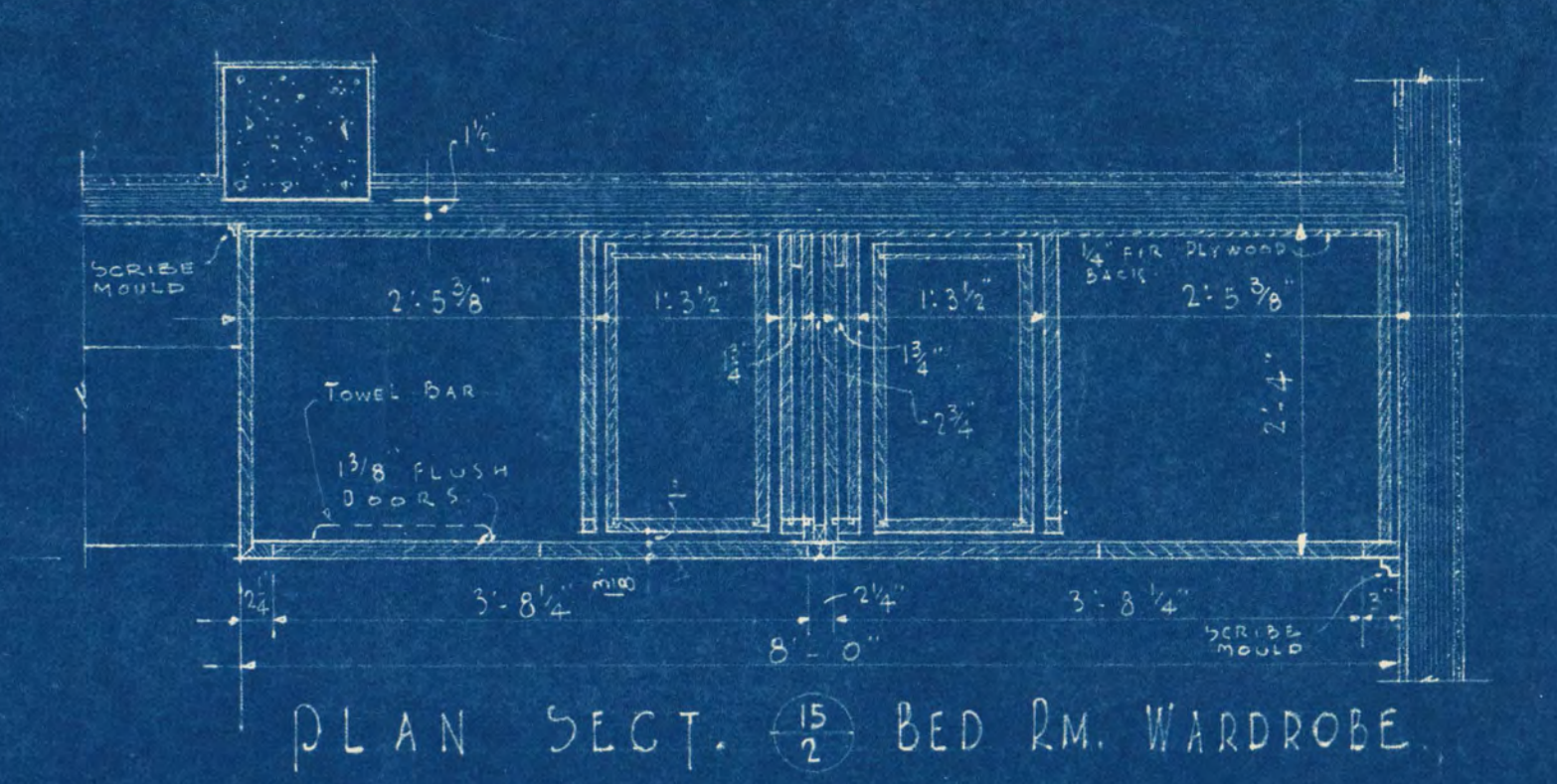
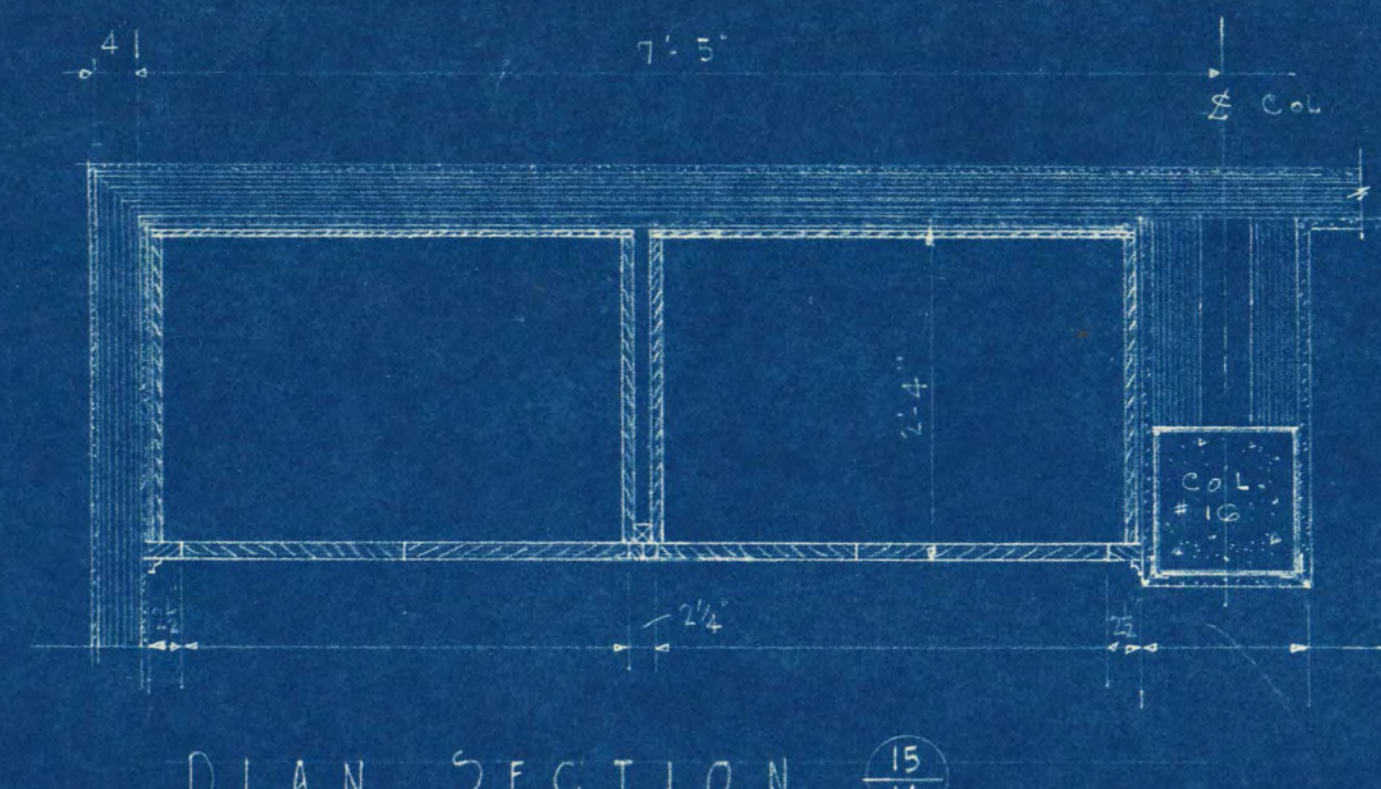
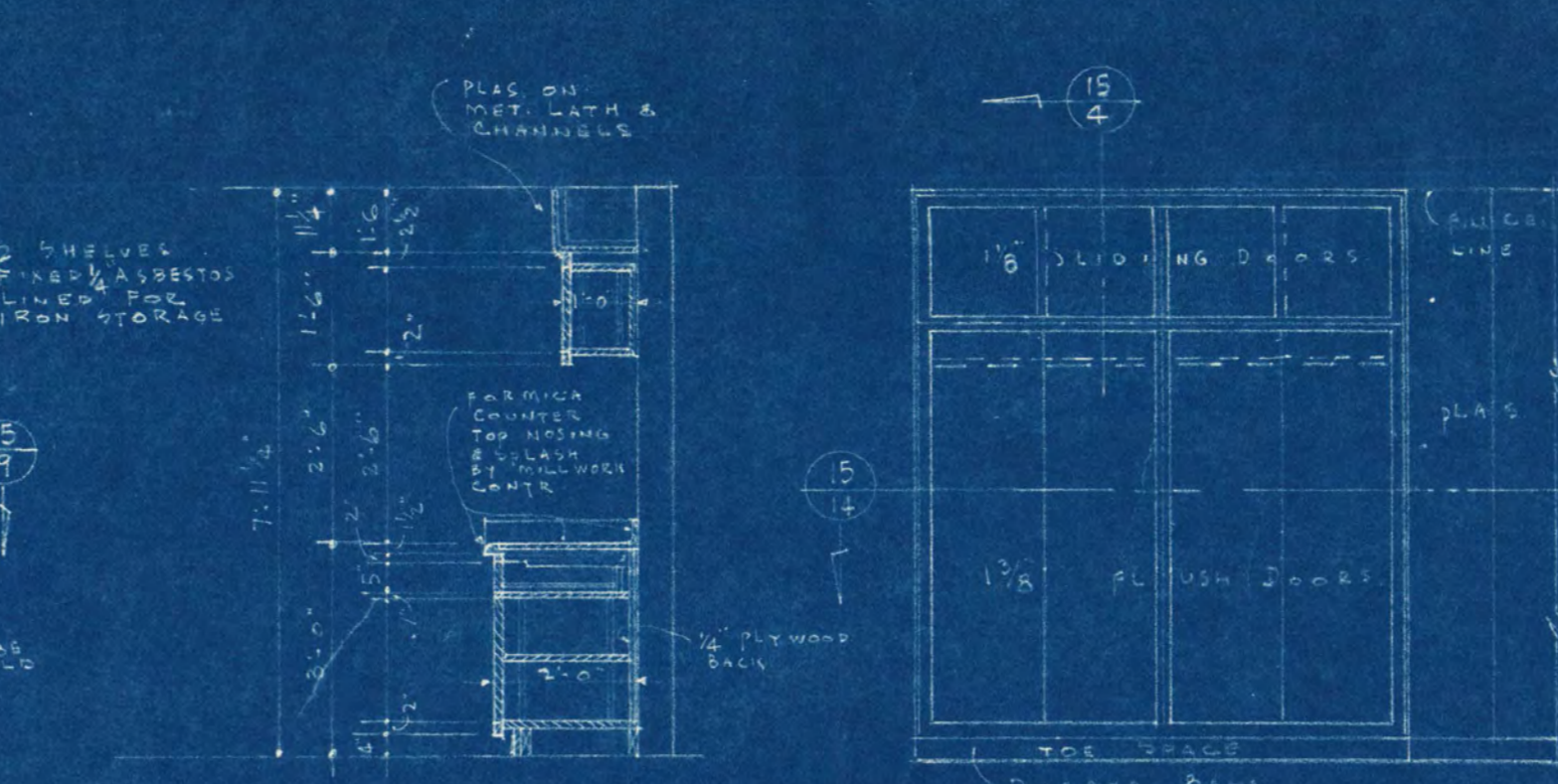
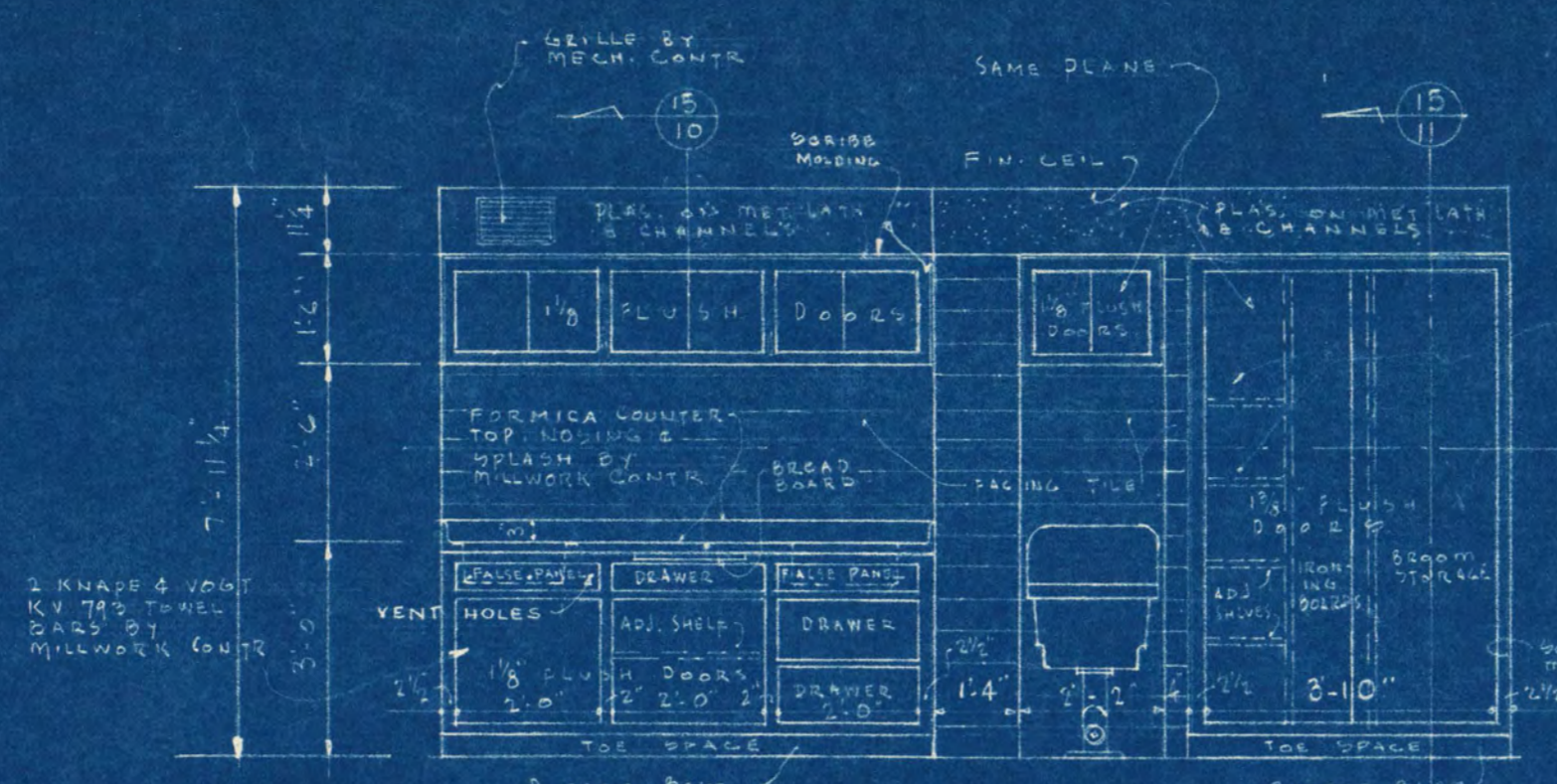
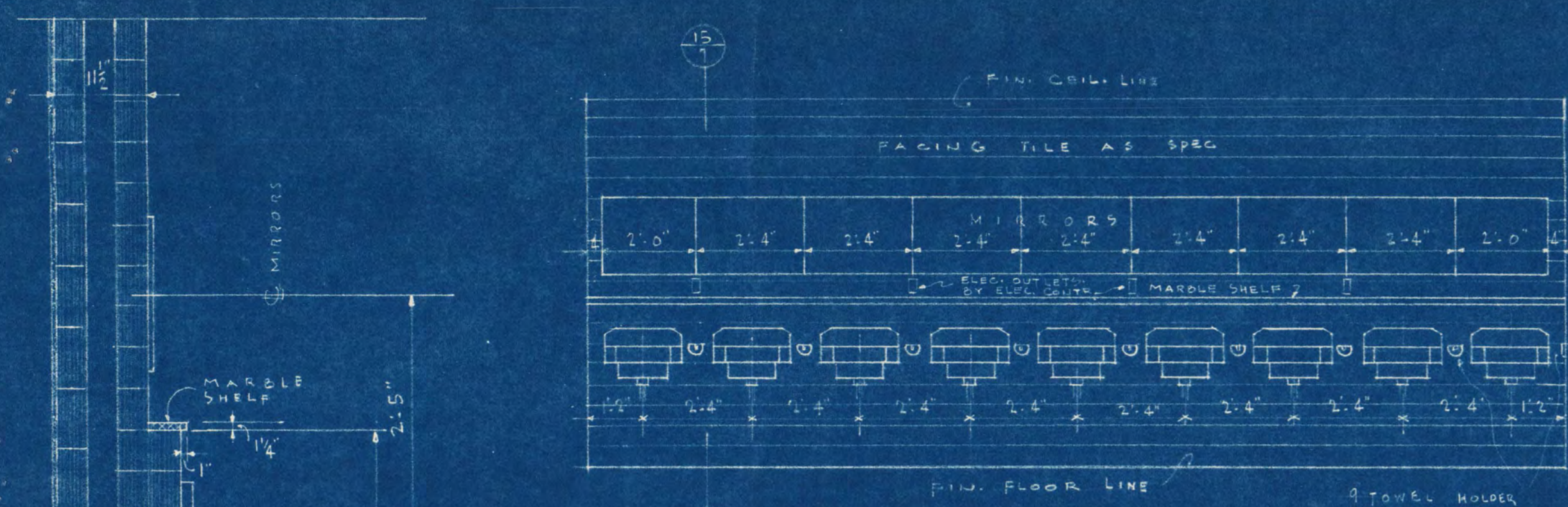
SCALE: 1/4" = 1'-0"

ADDITION TO SHOEMAKER HALL  
ST. CLOUD STATE COLLEGE  
ST. CLOUD, MINNESOTA

NO. 14  
DATE: 5-2-51  
APPROVED BY: *[Signature]*  
DESIGNED BY: *[Signature]*  
CHECKED BY: *[Signature]*  
DRAWN BY: *[Signature]*

FRANK W. JACKSON & ASSOCIATES, INC.  
ARCHITECTS-ENGINEERS  
ST. CLOUD, MINNESOTA

PROJECT NO. 14  
DATE: 5-2-51  
APPROVED BY: *[Signature]*  
DESIGNED BY: *[Signature]*  
CHECKED BY: *[Signature]*  
DRAWN BY: *[Signature]*



ADDITION TO SHOEMAKER HALL  
ST. CLOUD STATE COLLEGE  
ST. CLOUD, MINN. 56301  
1950-5701 FRANK W. JACKSON & ASSOCIATES, INC.  
ARCHITECTS & ENGINEERS  
ST. CLOUD, MINN. 56301

15  
3  
ST. CLOUD  
B-18