

FIRST FLOOR PLAN P&H UNIT A 1/8" = 1'-0"

**EDUCATION BUILDING ST. CLOUD STATE COLLEGE**

TRAYNOR, HERMANSON & HAHN ARCHITECTS INC.  
 ST. CLOUD, MINNESOTA  
 STRUCTURAL ENGINEERS JOHNSTON & SAHLMAN, INC. MPLS., MINN.  
 CONSULTING ENGINEERS GAUSMAN & MOORE, INC. ST. PAUL, MINN.

SHEET NO. M-4 OF 15

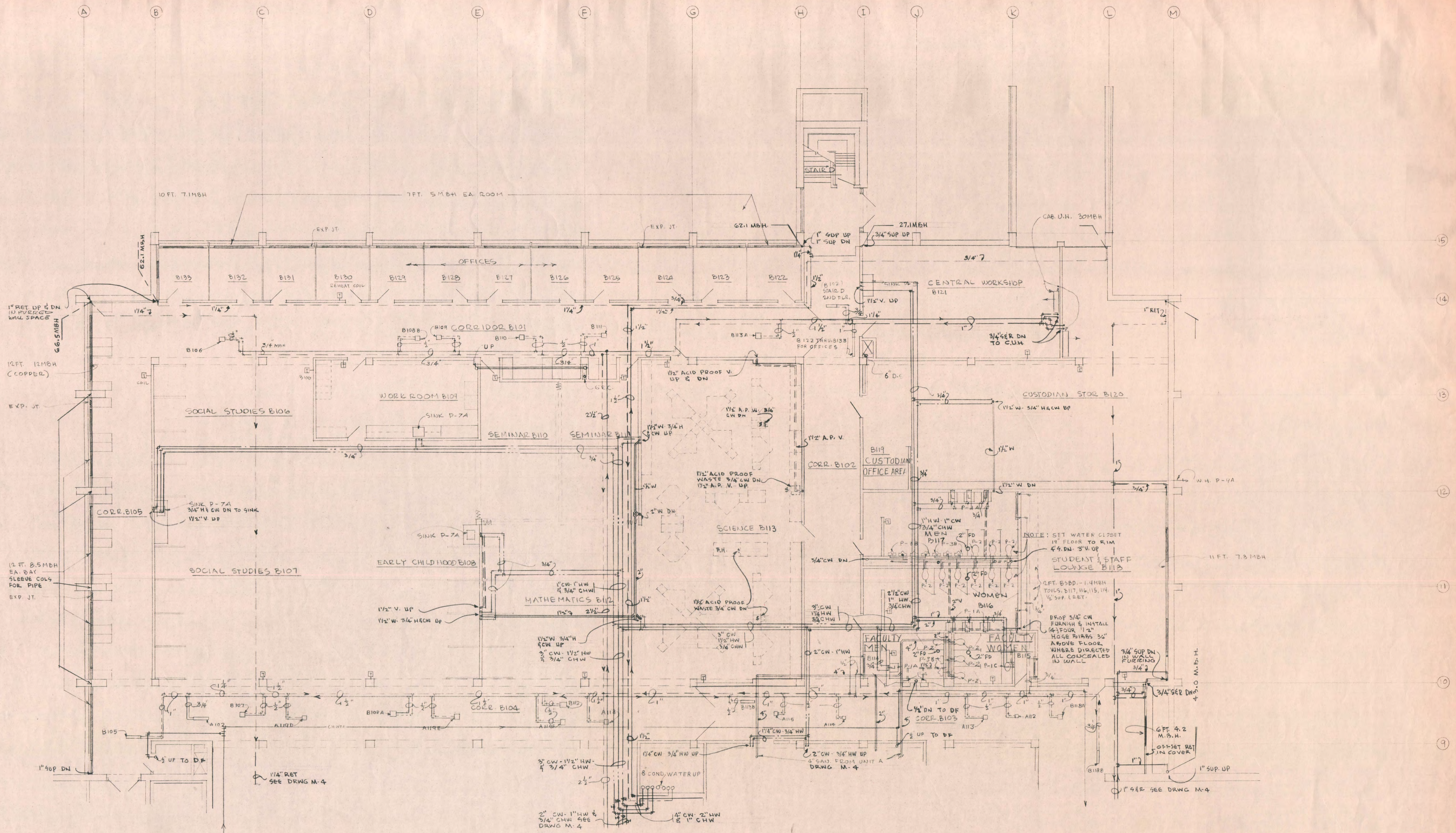
DRAWN \_\_\_\_\_ CHECKED \_\_\_\_\_ DATE NOV. 10, 1969

STATE OF MINNESOTA  
 DEPARTMENT OF ADMINISTRATION  
 ARCHITECTURAL AND ENGINEERING DIVISION  
 ROOM 6-10 ADMINISTRATION BUILDING  
 ST. PAUL 55101

APPROVED BY \_\_\_\_\_  
 APPROVED BY \_\_\_\_\_  
 APPROVED BY \_\_\_\_\_

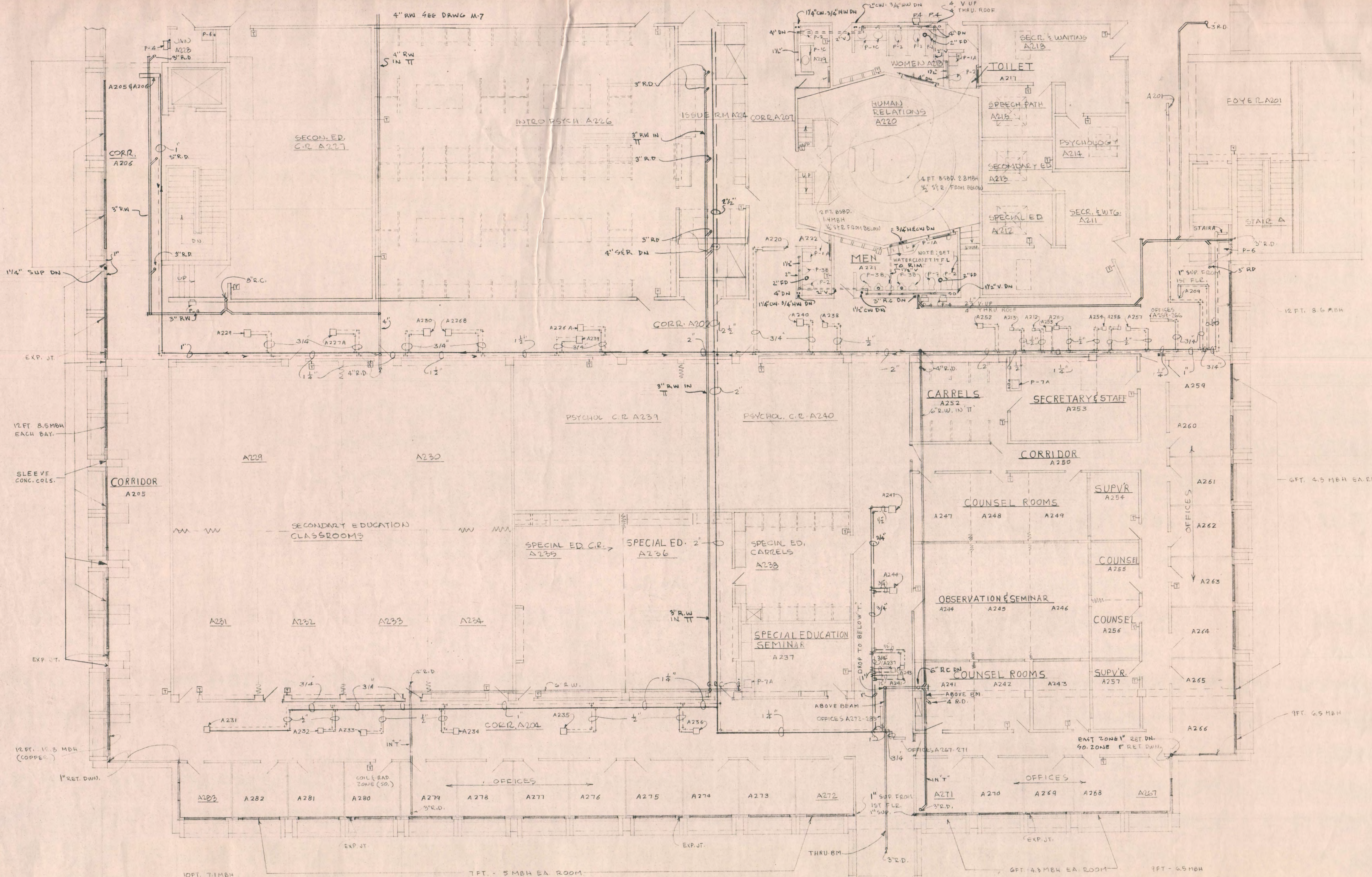
STATE PROJECT NO. 6360150

COMMISSIONER OF ADMINISTRATION  
 AN AUTHORIZED SIGNATURE



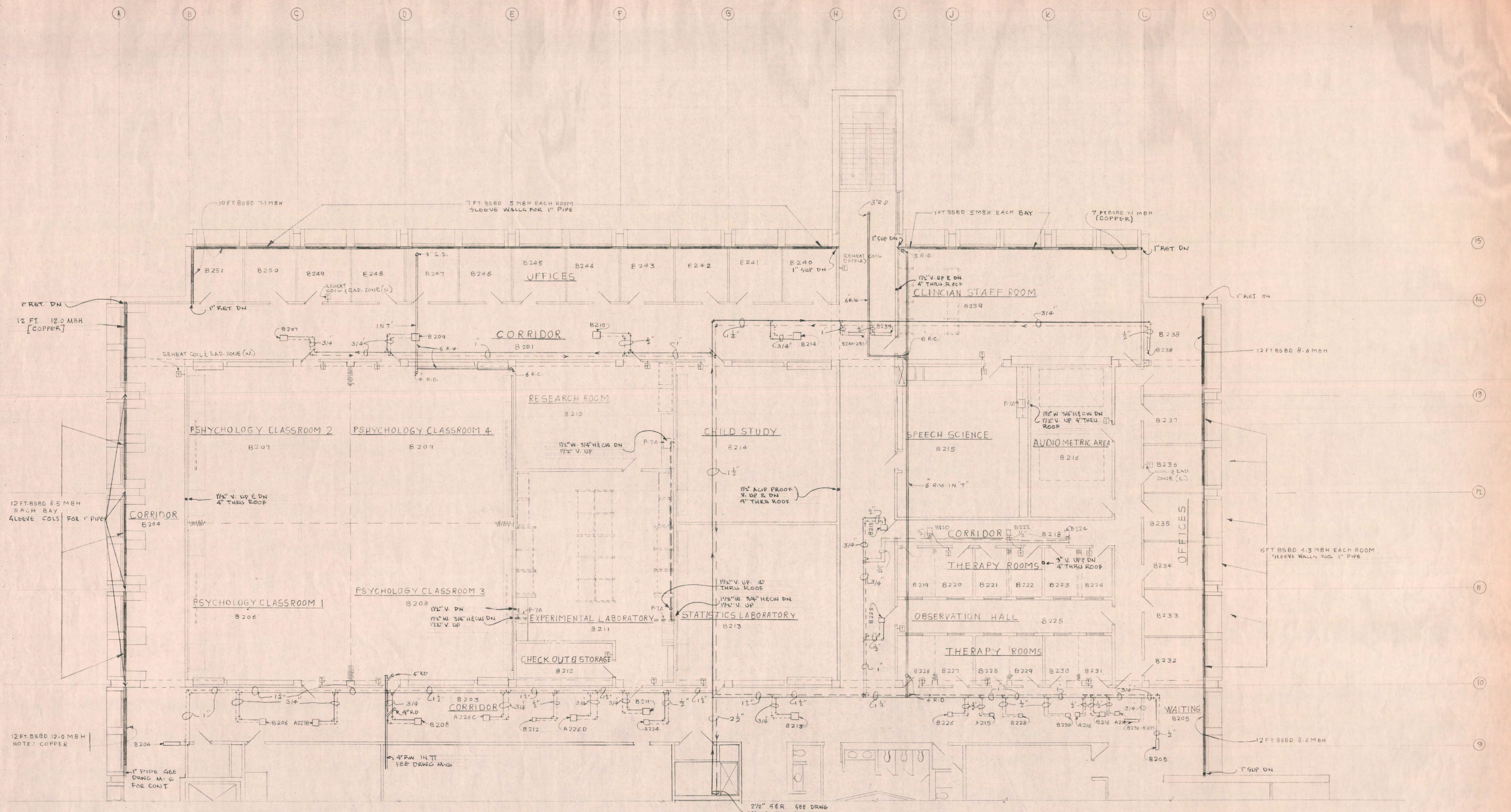
FIRST FLOOR PLAN P-4 UNIT B 1/8"=1'-0"

<b>EDUCATION BUILDING ST. CLOUD STATE COLLEGE</b>		SHEET NO. <b>M-5</b>
TRAYNOR, HERMANSON & HAHN ARCHITECTS INC. ST. CLOUD, MINNESOTA STRUCTURAL ENGINEERS JOHNSTON & SAHLMAN, INC. MPLS., MINN. CONSULTING ENGINEERS GAUSMAN & MOORE, INC. ST. PAUL, MINN.		OF 15
DRAWN	CHECKED	DATE NOV. 10, 1964
STATE OF MINNESOTA DEPARTMENT OF ADMINISTRATION ARCHITECTURAL AND ENGINEERING DIVISION ROOM 6-10 ADMINISTRATION BUILDING ST. PAUL 55101	APPROVED BY _____ APPROVED BY _____ APPROVED BY _____	COMMISSIONER OF ADMINISTRATION AN AUTHORIZED SIGNATURE
STATE PROJECT NO. 6360150		



SECOND FLOOR PLAN P&H UNIT A 1/8"=1'-0"

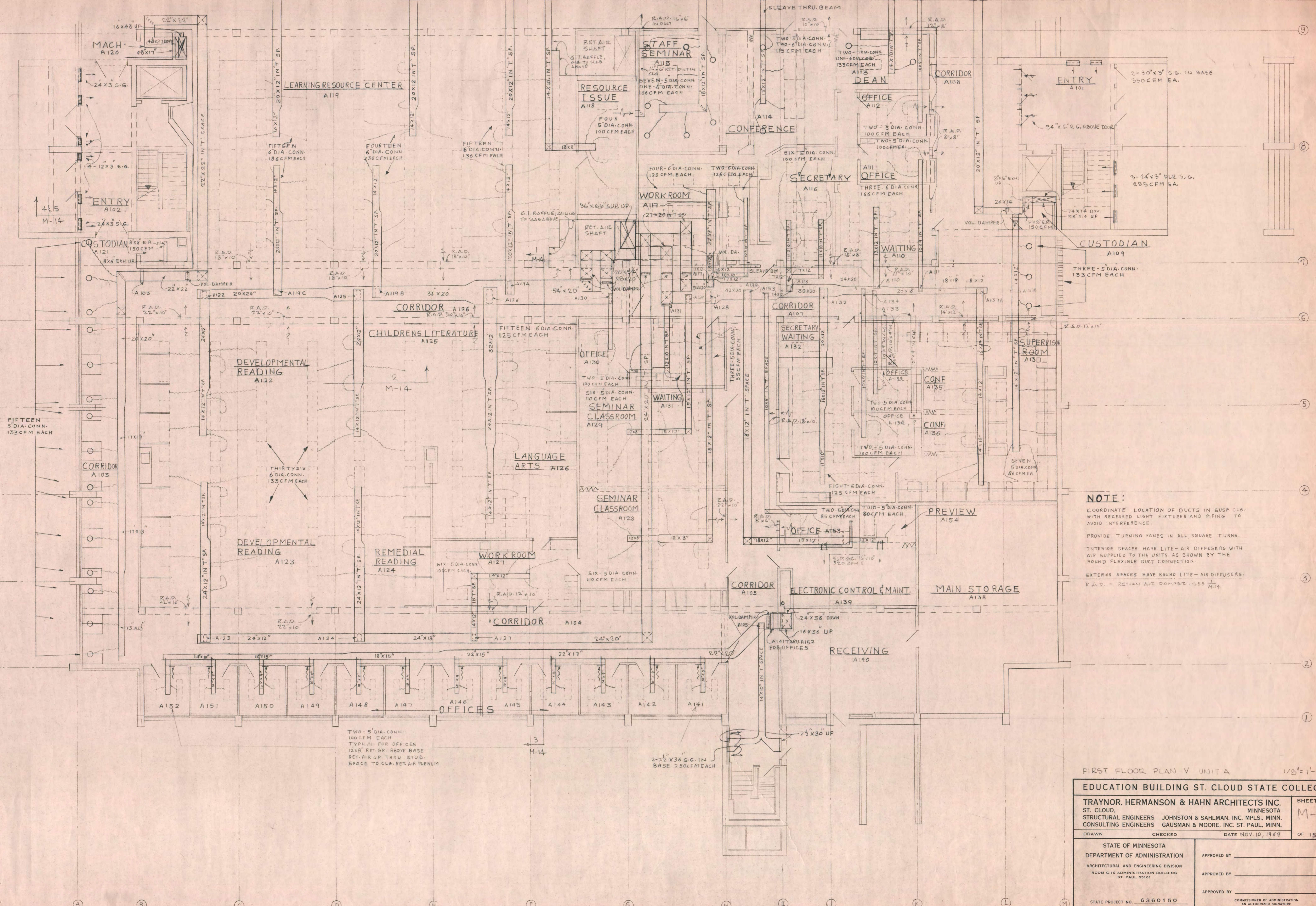
<b>EDUCATION BUILDING ST. CLOUD STATE COLLEGE</b>		SHEET NO. <b>M-6</b>
TRAYNOR, HERMANSON & HAHN ARCHITECTS INC. ST. CLOUD, MINNESOTA STRUCTURAL ENGINEERS JOHNSTON & SAHLMAN, INC. MPLS., MINN. CONSULTING ENGINEERS GAUSMAN & MOORE, INC. ST. PAUL, MINN.		OF 15
DRAWN _____ CHECKED _____ DATE Nov. 10, 1961	APPROVED BY _____ APPROVED BY _____ APPROVED BY _____	STATE PROJECT NO. <b>6360150</b> COMMISSIONER OF ADMINISTRATION AN AUTHORIZED SIGNATURE



SECOND FLOOR PLAN P&H UNIT B 1/8" = 1'-0"

EDUCATION BUILDING ST. CLOUD STATE COLLEGE		SHEET NO.
TRAYNOR, HERMANSON & HAHN ARCHITECTS INC.		M-7
ST. CLOUD, MINNESOTA	JOHNSTON & SAHLMAN, INC. MPLS. MINN.	
STRUCTURAL ENGINEERS	GAUSMAN & MOORE, INC. ST. PAUL, MINN.	
DRAWN	CHECKED	DATE NOV. 10, 1969
		OF 15

STATE OF MINNESOTA DEPARTMENT OF ADMINISTRATION ARCHITECTURAL AND ENGINEERING DIVISION ROOM G-10 ADMINISTRATION BUILDING ST. PAUL 55101	APPROVED BY _____ APPROVED BY _____ APPROVED BY _____
STATE PROJECT NO. 6360150	COMMISSIONER OF ADMINISTRATION AN AUTHORIZED SIGNATURE



**NOTE:**  
 COORDINATE LOCATION OF DUCTS IN SUSP. CLG. WITH RECESSED LIGHT FIXTURES AND PIPING TO AVOID INTERFERENCE.  
 PROVIDE TURNING VANES IN ALL SQUARE TURNS.  
 INTERIOR SPACES HAVE LITE-AIR DIFFUSERS WITH AIR SUPPLIED TO THE UNITS AS SHOWN BY THE ROUND FLEXIBLE DUCT CONNECTION.  
 EXTERIOR SPACES HAVE ROUND LITE-AIR DIFFUSERS.  
 R.A.D. = RETURN AIR DAMPER - SEE M-14

TWO - 5" DIA. CONN. 100 CFM EACH  
 TYPICAL FOR OFFICES  
 12x36 RET. GR. ABOVE BASE  
 RET. AIR UP THRU. STUD. SPACE TO CLG. RET. AIR PLENUM

FIRST FLOOR PLAN V UNIT A 1/8" = 1'-0"

**EDUCATION BUILDING ST. CLOUD STATE COLLEGE**

TRAYNOR, HERMANSON & HAHN ARCHITECTS INC. SHEET NO. M-8  
 ST. CLOUD, MINNESOTA  
 STRUCTURAL ENGINEERS JOHNSTON & SAHLMAN, INC. MPLS., MINN.  
 CONSULTING ENGINEERS GAUSMAN & MOORE, INC. ST. PAUL, MINN.

DRAWN \_\_\_\_\_ CHECKED \_\_\_\_\_ DATE NOV. 10, 1969 OF 15

STATE OF MINNESOTA  
 DEPARTMENT OF ADMINISTRATION  
 ARCHITECTURAL AND ENGINEERING DIVISION  
 ROOM 610 ADMINISTRATION BUILDING  
 ST. PAUL 55101

APPROVED BY \_\_\_\_\_  
 APPROVED BY \_\_\_\_\_  
 APPROVED BY \_\_\_\_\_

STATE PROJECT NO. 6360150 COMMISSIONER OF ADMINISTRATION  
 AN AUTHORIZED SIGNATURE