

Photographs

William M. Lindgren



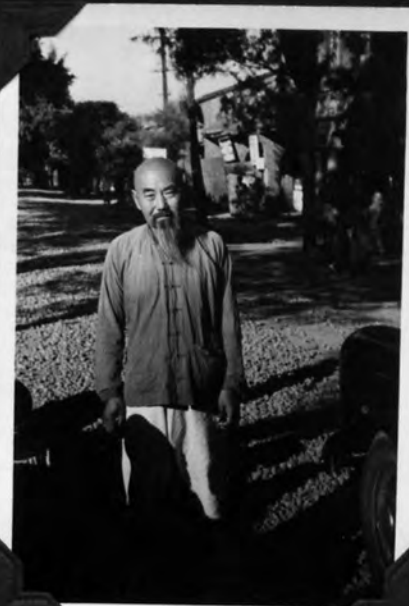
THE TEXAS COMPANY (CHINA) LIMITED
 TAIPEH OFFICE STAFF

April 20, 1950.

社影攝通台
 THE TAIWAN PHOTO

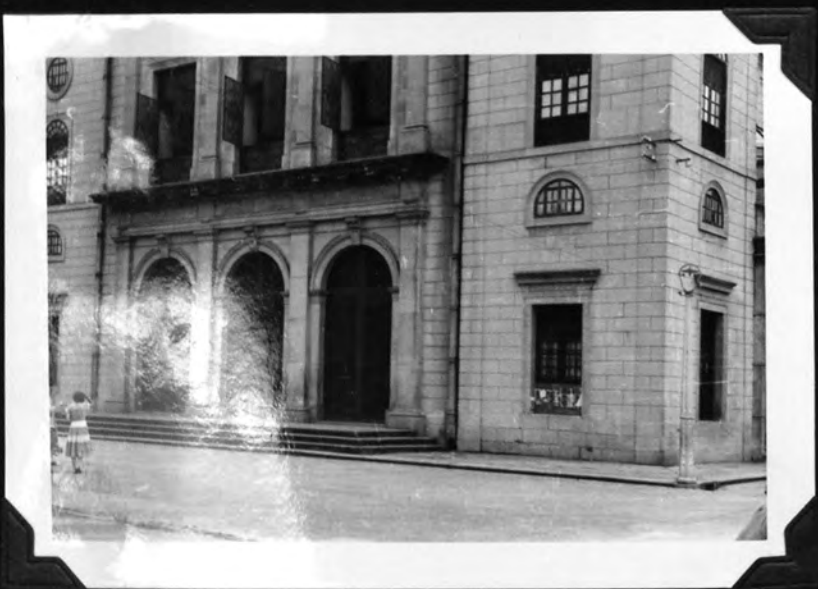






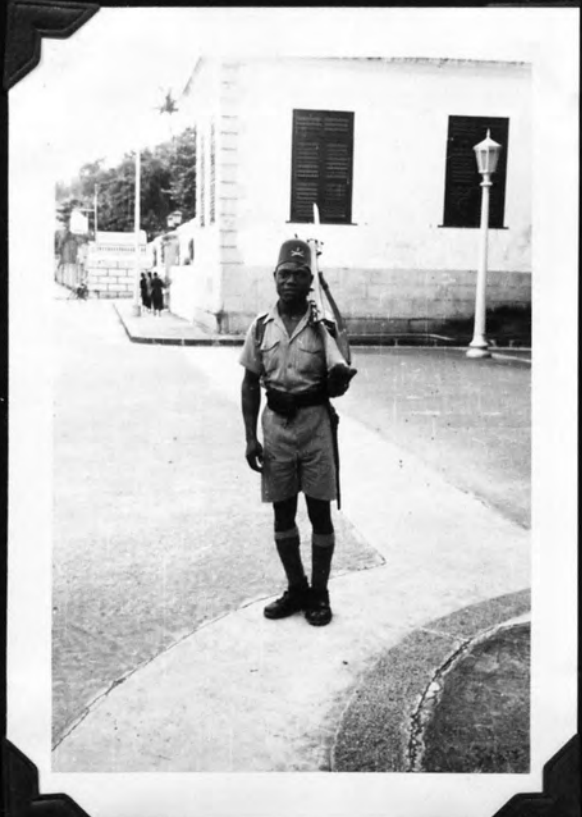
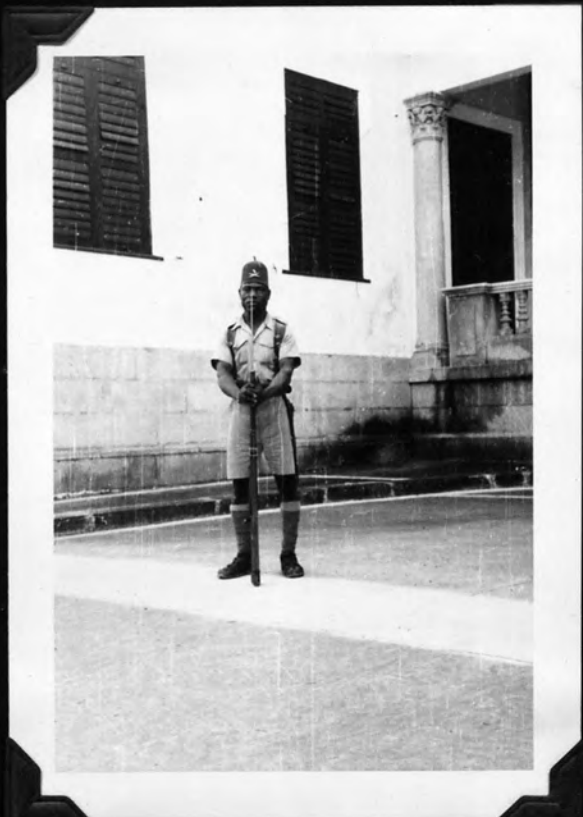
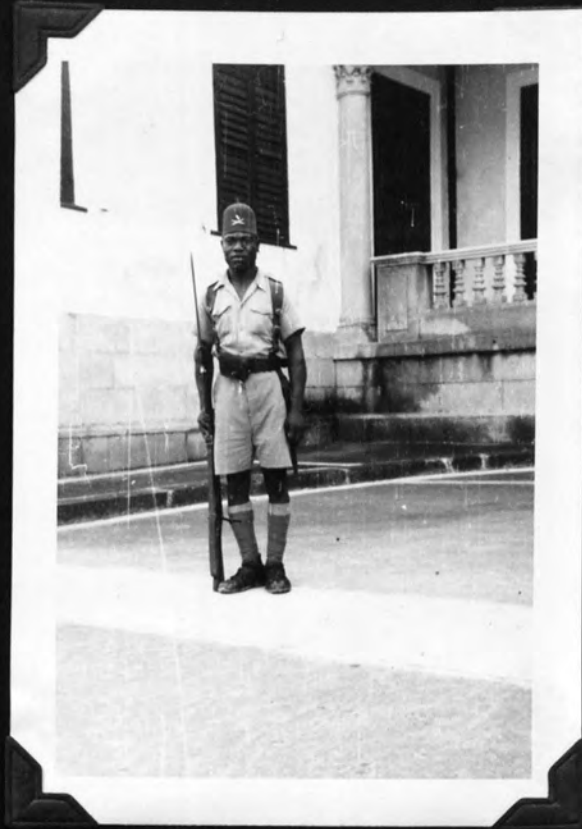






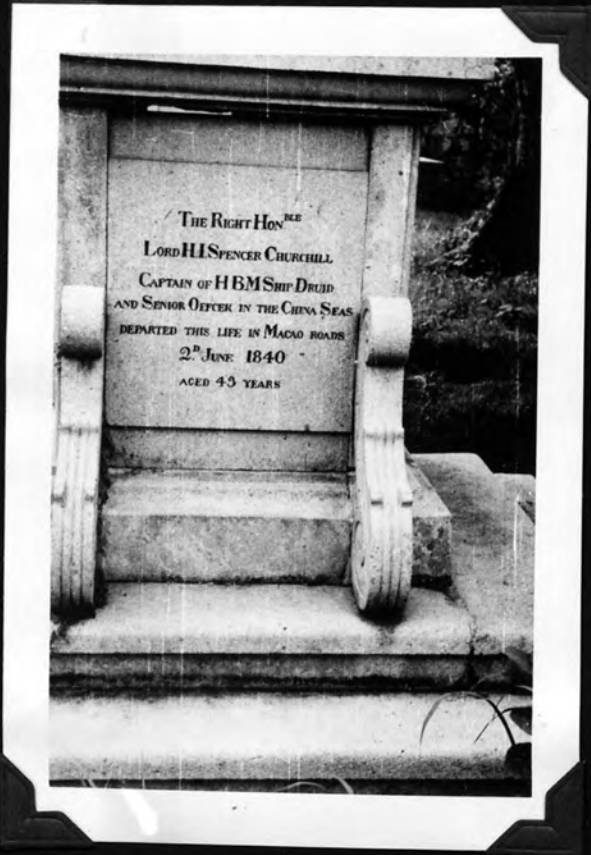


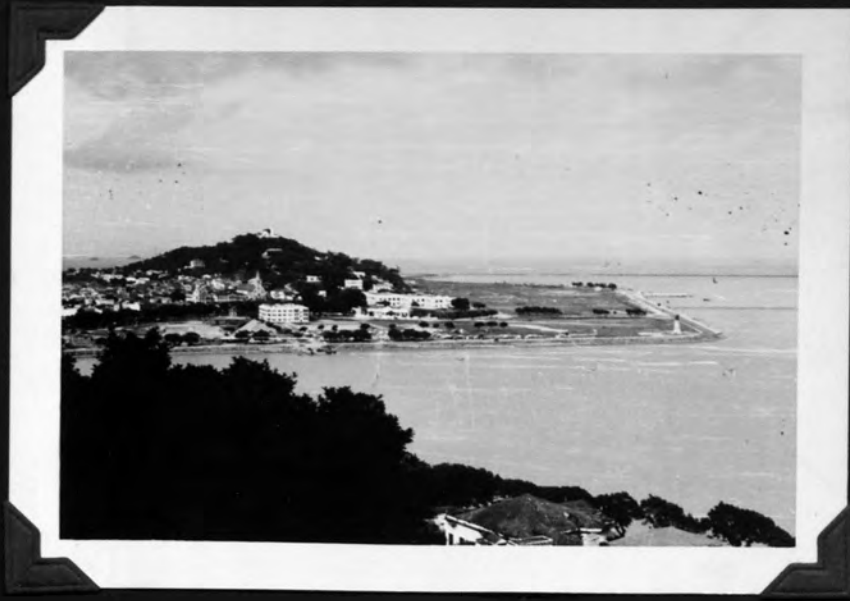














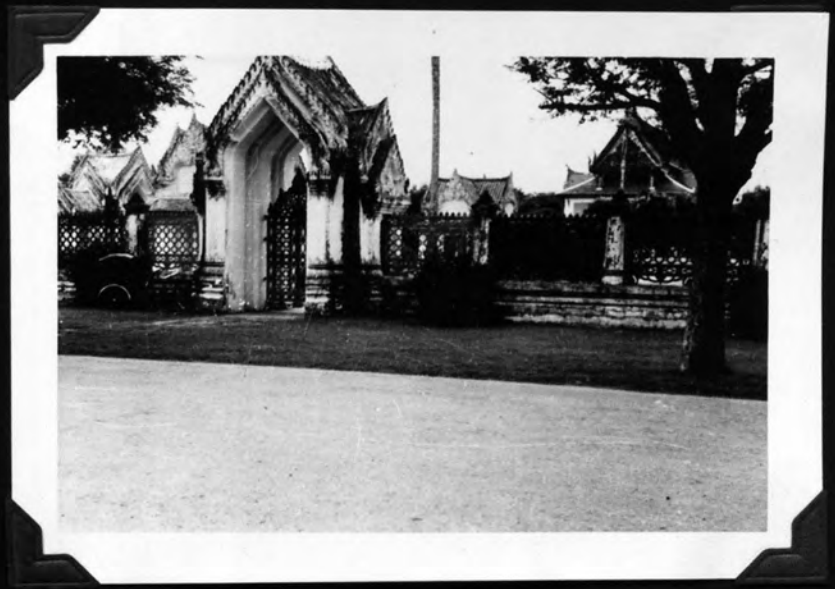
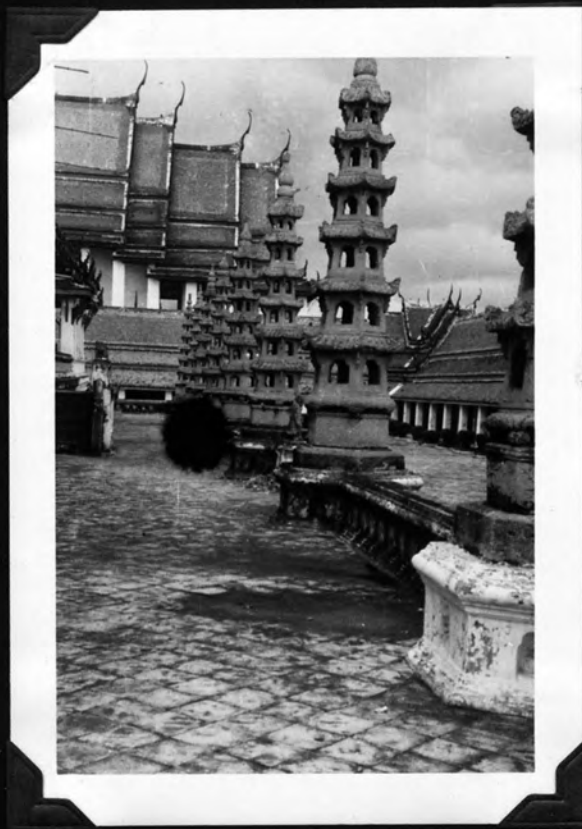
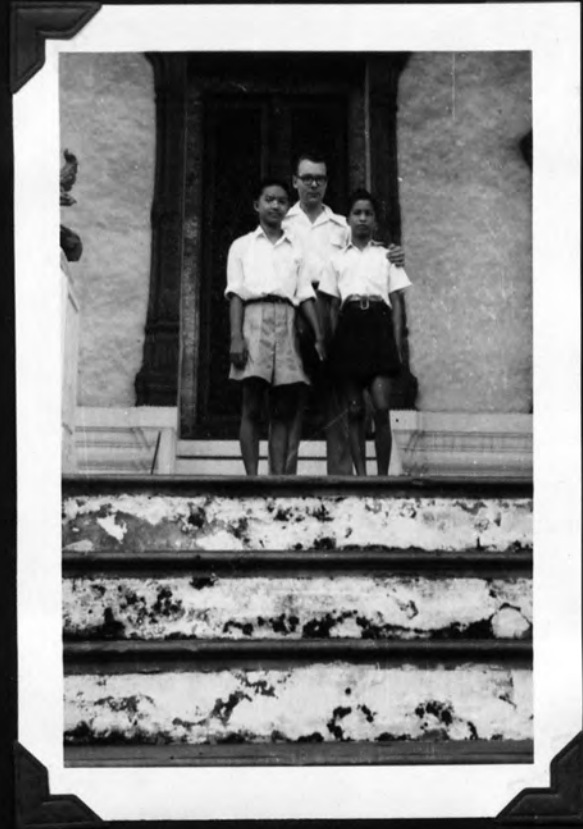
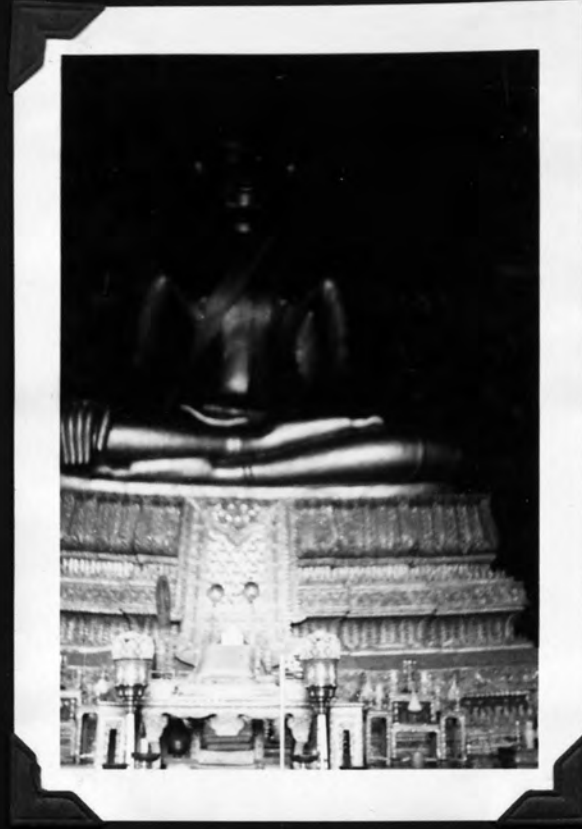


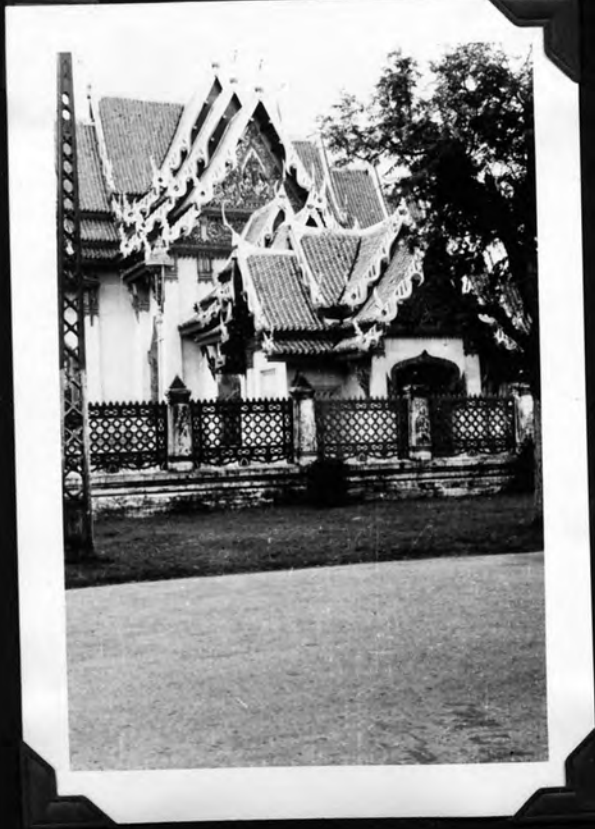






3

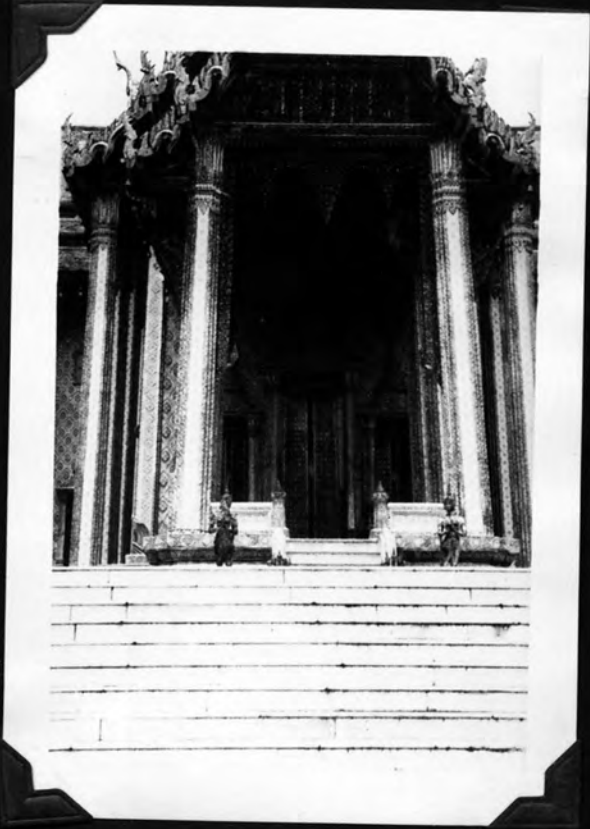
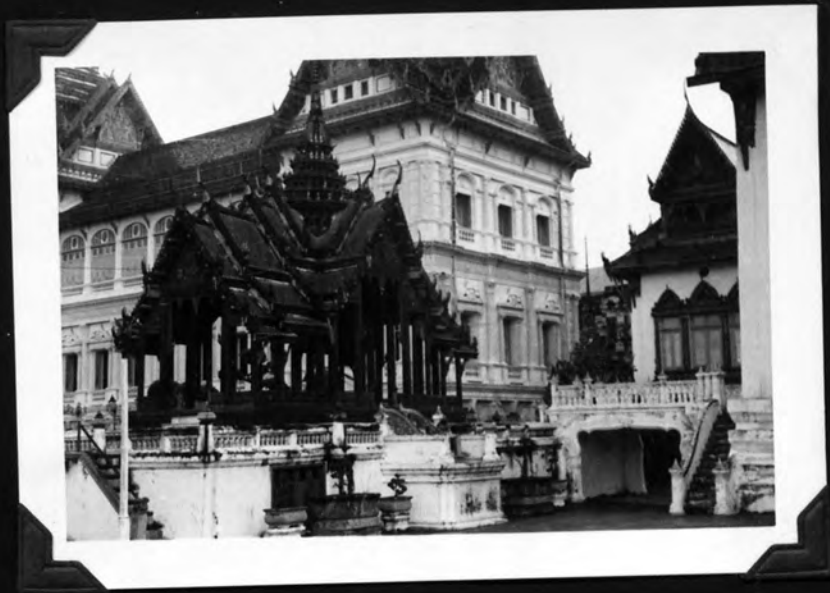




4





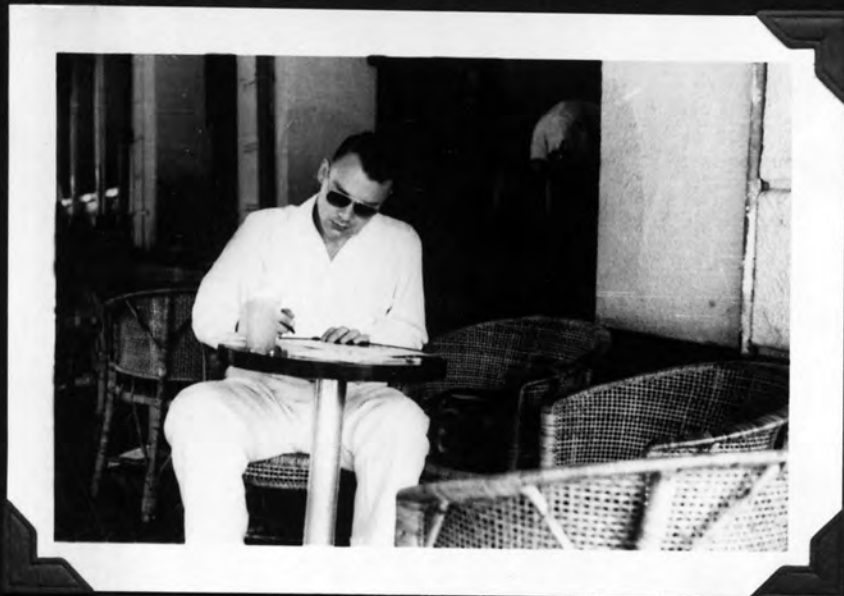






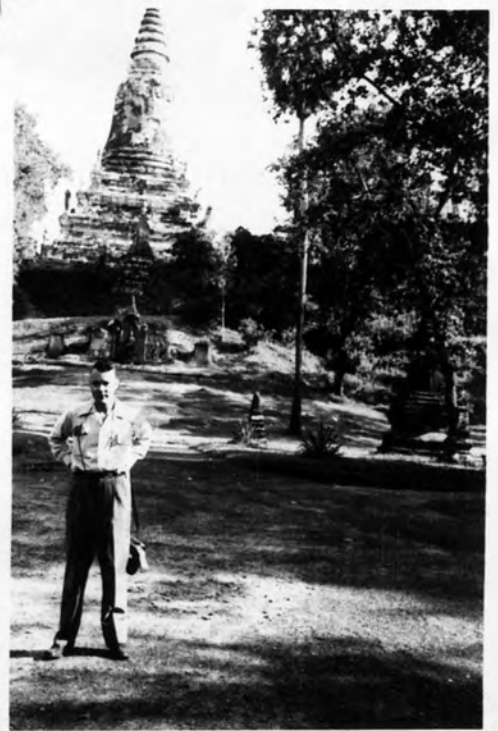










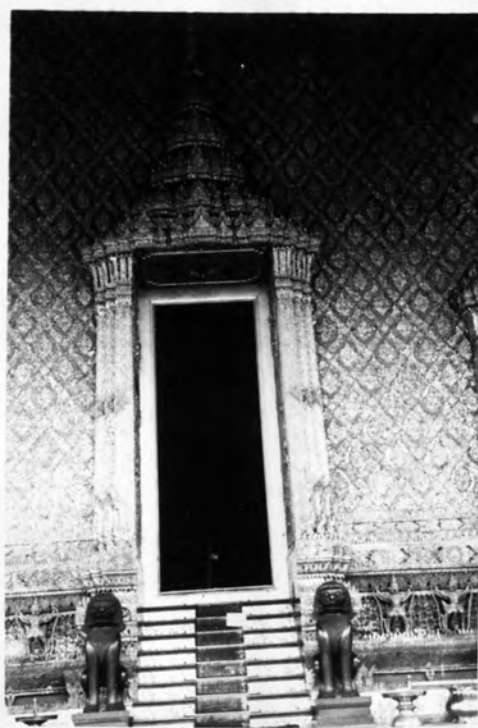
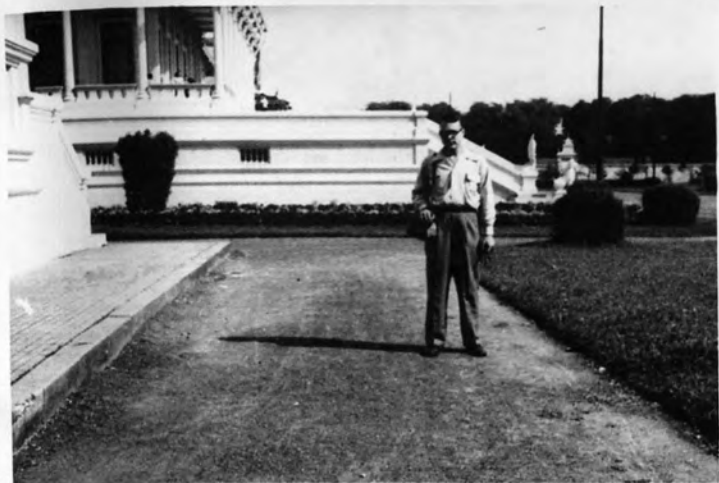


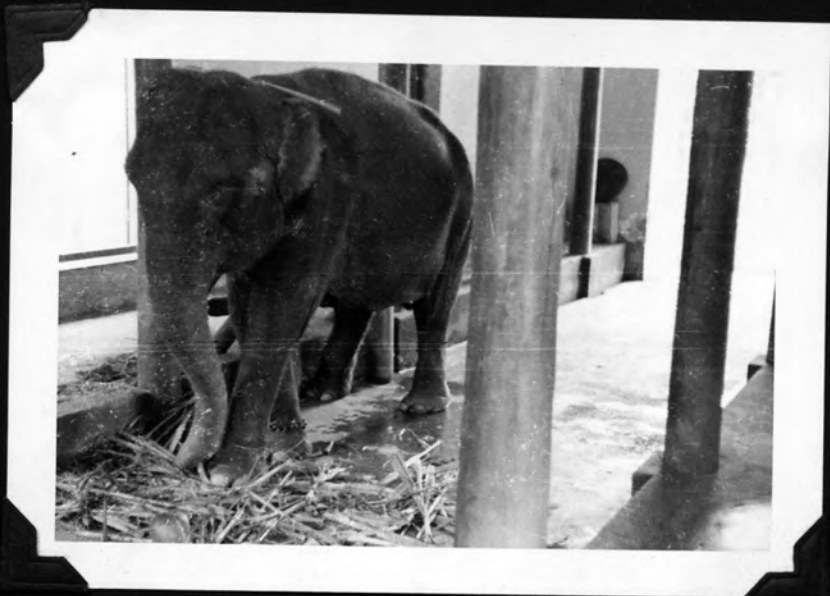
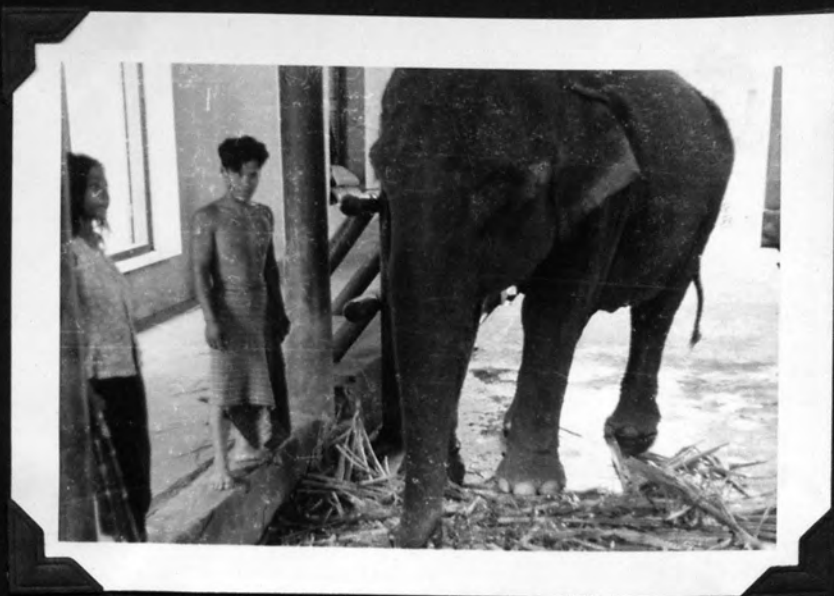
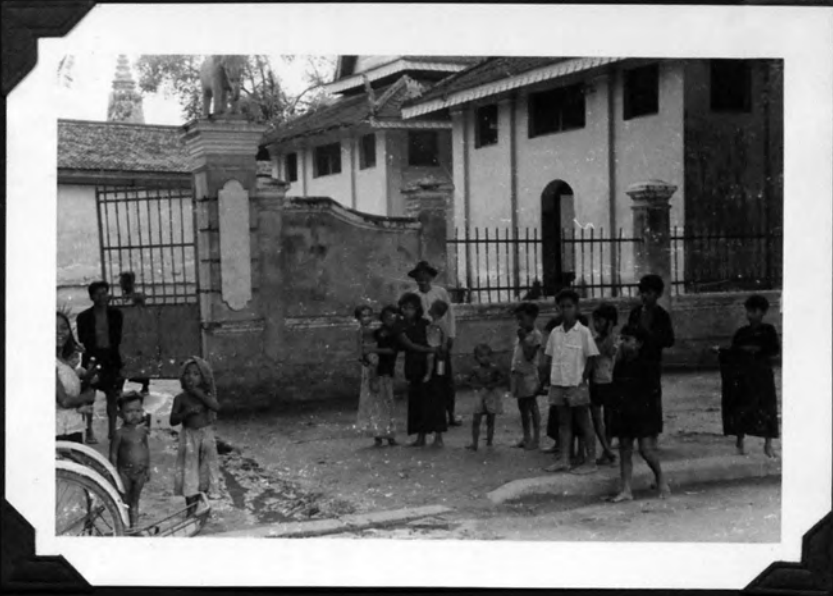












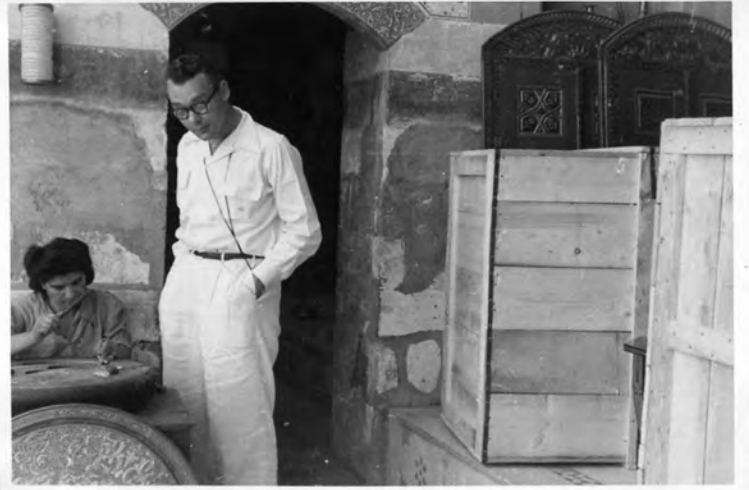
3



4









4

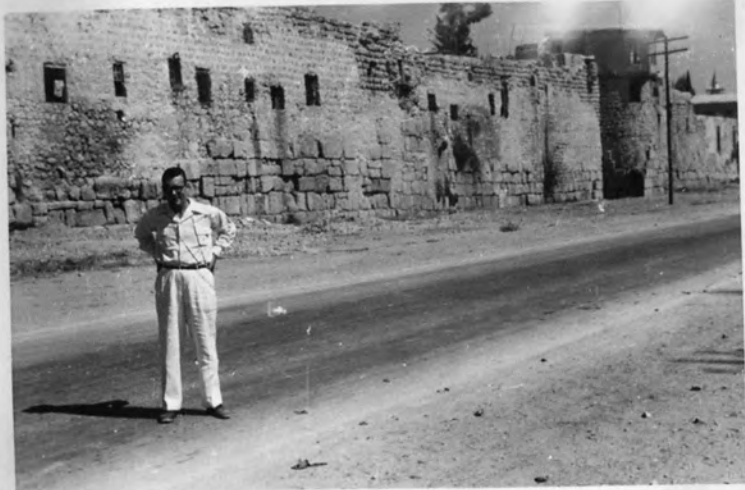


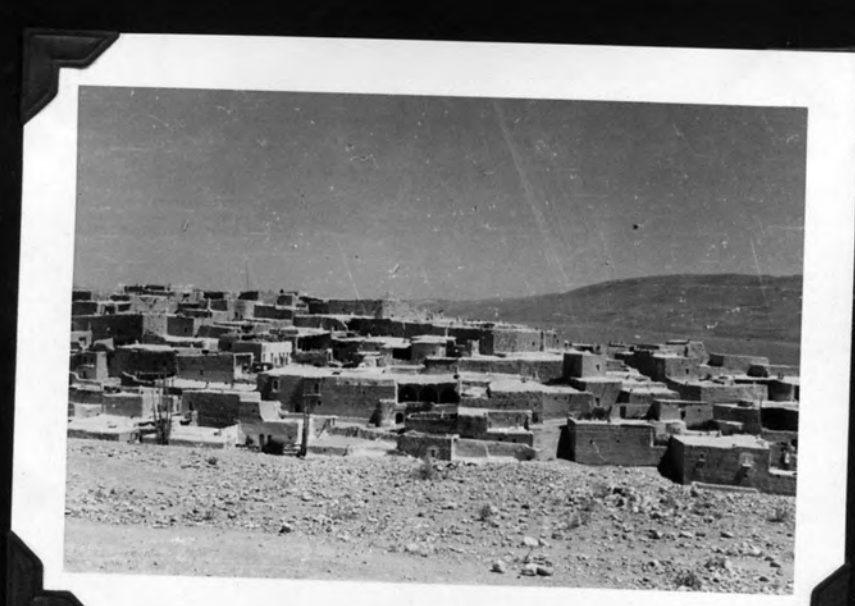
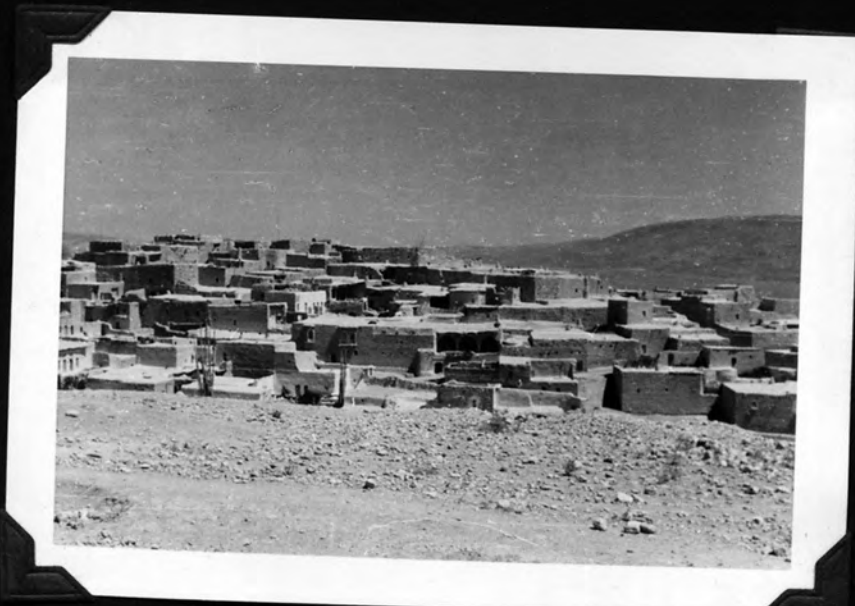
5

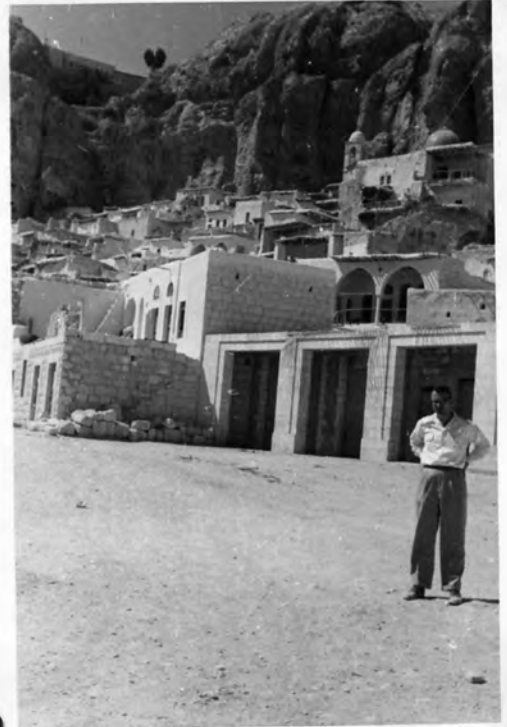


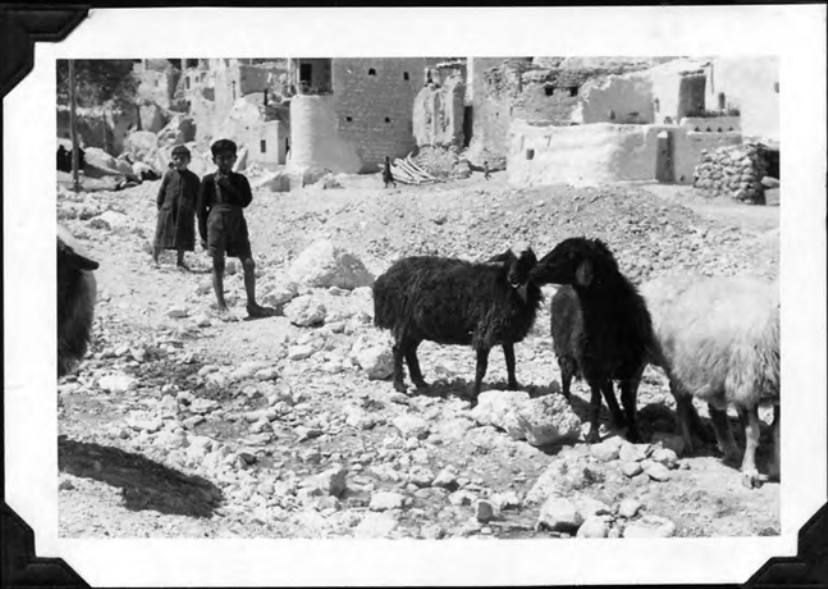
H







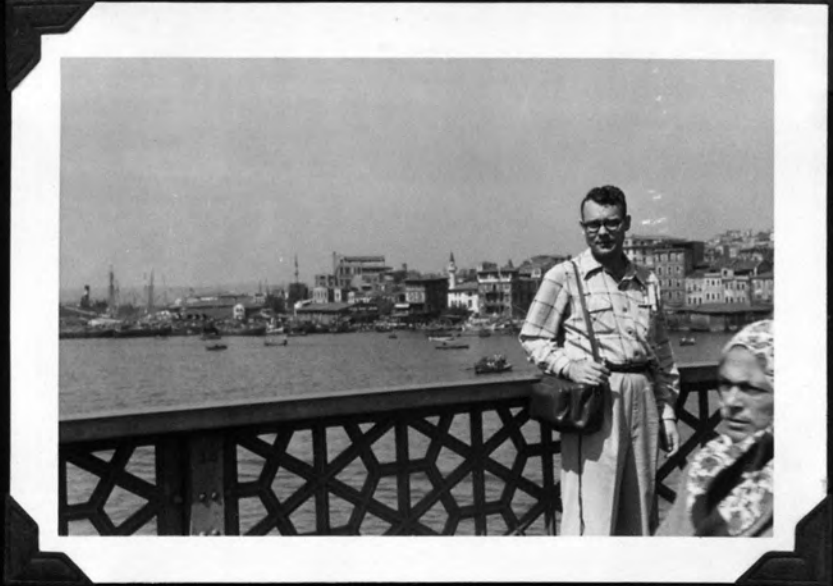




3

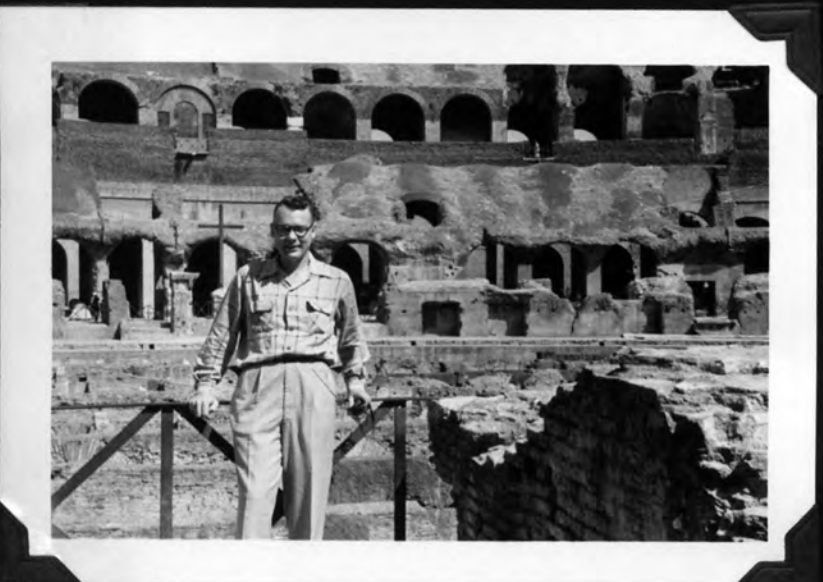


3











4



4



2



3

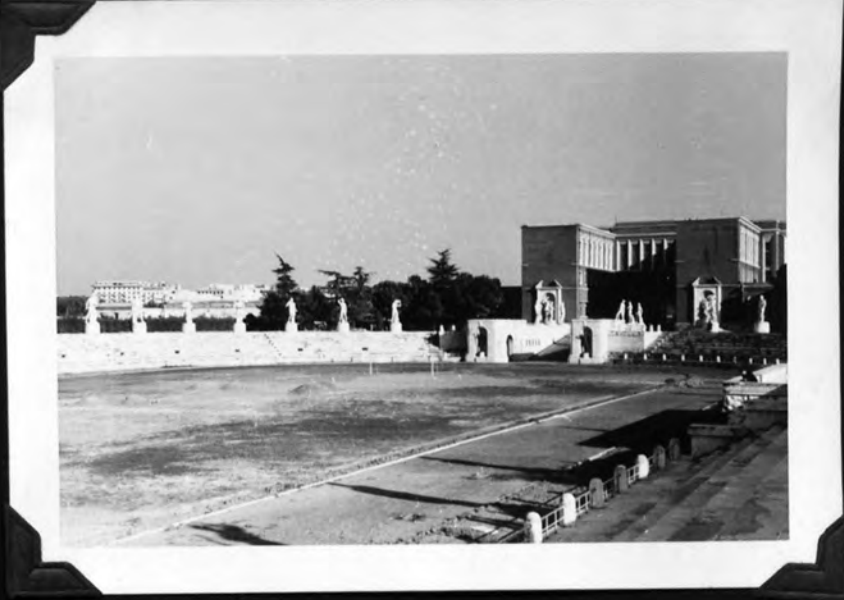


4



5









4



3













































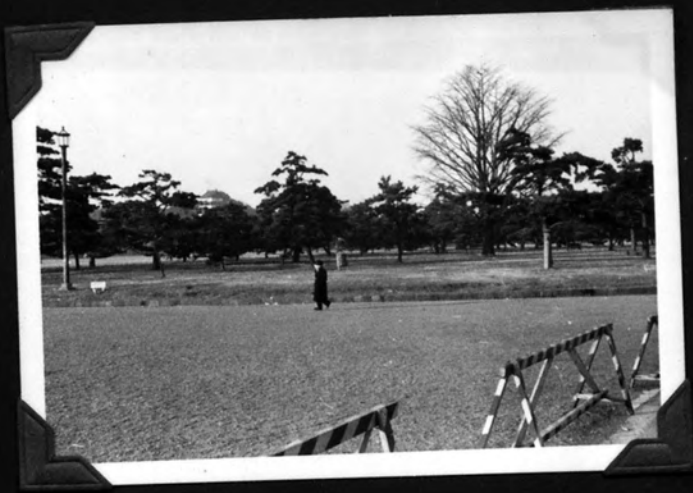




3



2



4





5





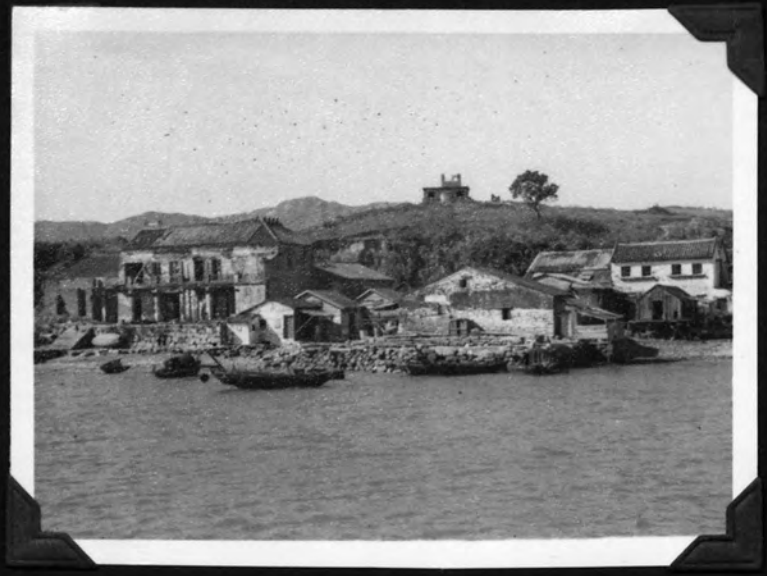








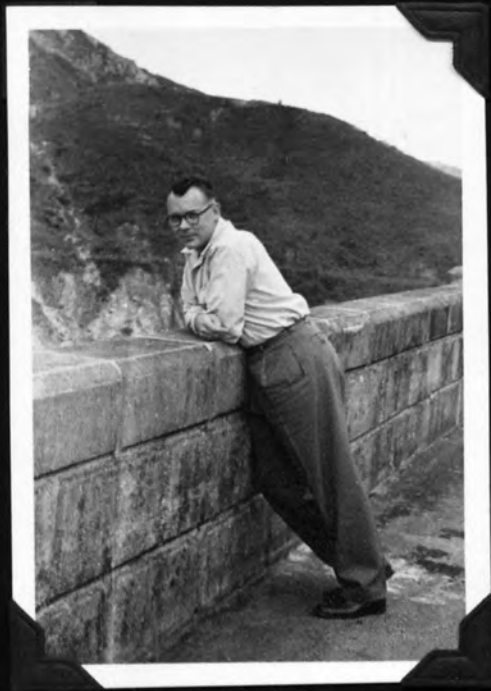
4



3

















To Billy
With my fondest
regards and remembrance
of our "batch" in
the air
Jim Lault



