

PLOT PLAN LEGEND

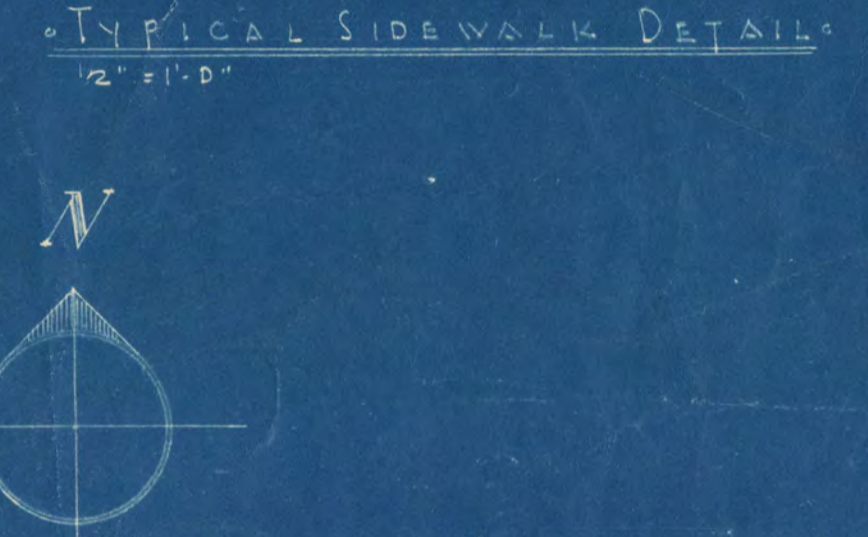
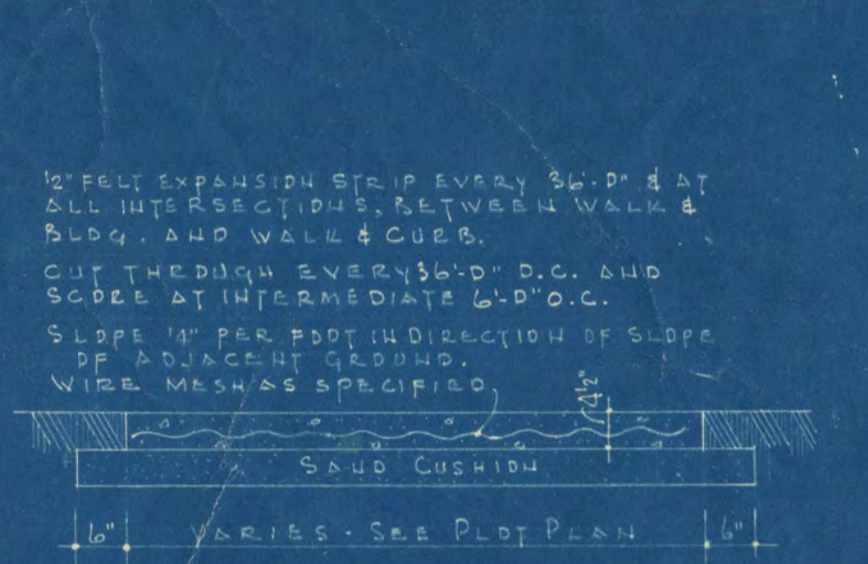
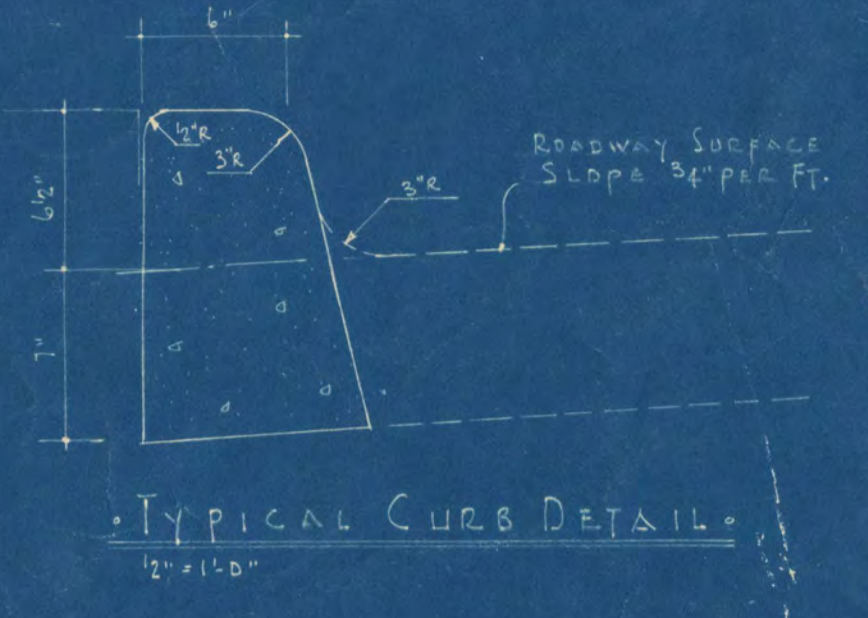
- GRADES:
  - EXISTING E.L. 1056.75'
  - ESTABLISHED EXIST. GRADE E.L. 1056.97'
- TREES & SHRUBS:
  - EXISTING TO REMAIN:
  - EXISTING TO BE REMOVED:
- TEST BORING HOLE: (Symbol)
- SECTION MARKS:
  - TOP OF CURBANT - S.W. CORNER OF EIGHTH STREET & THIRD AVE. SOUTH - ELEV. 1051.17'
- NOTES:
  - PLANT NEW HOOD'S SHEDSARY AROUND COURT WALL - FENCE PERIMETER.

MATERIAL INDICATIONS LEGEND

- FACE BRICK
- COMMON BRICK
- CONCRETE
- CONCRETE W/M
- CONCRETE BLOCK
- CONCRETE CURB
- CONCRETE PAVEMENT
- FLUID INSULATION
- INSULATED MFR.
- WOOD
- SECTION
- ASPH.
- GRAVEL
- SMALL SAND
- SMALL SAND & GRAVEL
- METAL IN SECTION
- METAL IN ELEVATION
- STEEL
- SECTION
- METAL IN ELEVATION

6x6x6 LEGEND

- (Symbol) INDICATES DRAWING NO.
- (Symbol) INDICATES DETAIL NO.
- (Symbol) THIS IS AN ELEVATION OR PLAN FROM INDICATES DIRECTION OF VIEW.
- (Symbol) THIS IS A SECTION DETAIL MARK ABOVE INDICATES DIRECTION OF VIEW.
- (Symbol) INDICATES COLUMN NO. SEE BRIDGE.
- (Symbol) INDICATES DOOR NO. FIRST FLOOR INDICATES DOOR NO. SECOND FLOOR DOOR SCHEDULES.
- (Symbol) INDICATES WINDOW SPACE FIRST FLOOR INDICATES WINDOW SPACE SECOND FLOOR WINDOW SCHEDULES.
- (Symbol) INDICATES WINDOW TYPE SEE WINDOW SCHEDULES.
- (Symbol) SAFETY GROUP - SEE SPEC.



SOIL TEST LEGEND

- A. DESTROYED
- B. BLACK CLAY LOAM (RATHER SOFT)
- C. BLACK LOAM (MOIST)
- D. BLACK SANDY LOAM (MOIST)
- E. BROWN SANDY LOAM (MOIST)
- F. BROWN SANDY CLAY LOAM (RATHER SOFT)
- G. DARK BROWN SANDY LOAM (MOIST)
- H. LIGHT BROWN MEDIUM SAND (MOIST)
- I. BROWN MEDIUM SAND (MOIST)
- J. BROWN WELL GRADED SOIL (MOIST)
- K. DARK BROWN WELL GRADED SAND (MOIST)
- L. BROWN COARSE SAND (MOIST)
- M. LIGHT BROWN COARSE SAND (MOIST)
- N. BROWN WELL GRADED LOAMY SAND
- O. FINE, MOSTLY BLACK AND SOME DARK GRAYISH BROWN LOAMY SAND
- P. FINE, MOSTLY DARK GRAYISH BROWN AND BROWN SAND AND LOAMY SAND
- Q. BROWN COARSE LOAMY SAND (MOIST)
- R. WITH SOME GRAVEL
- S. WITH SOME GRAVEL
- T. WITH GRAVEL & SOME BOULDERS
- U. AND GRAVEL WITH BOULDERS
- V. WITH A FEW BOULDERS
- W. WITH A FEW BOULDERS
- X. WITH A FEW LENSES OF SANDY CLAY LOAM AND SAND
- Y. SOME LENSES OF SAND AND SANDY CLAY LOAM
- Z. WITH A FEW LENSES OF SANDY LOAM
- AA. WITH LENSES OF SANDY LOAM
- AB. WITH A FEW LENSES OF SANDY CLAY LOAM AND SAND
- AC. SOME LENSES OF SAND AND SANDY CLAY LOAM
- AD. WITH LENSES OF SANDY CLAY LOAM AND A FEW LENSES OF SAND
- AE. WITH A FEW LENSES OF DARK BROWN LOAMY SAND
- AF. WITH A FEW LENSES OF SAND
- AG. WITH A FEW LENSES OF SAND
- AH. WITH A FEW LENSES OF SAND
- AI. WITH LITTLE GRAVEL & A LAYER OF SLIGHTLY AT THE SURFACE

OFFICE COPY Do Not Remove From File

INDUSTRIAL ARTS AND CLASSROOM BUILDING

DEPT. OF ADMINISTRATION STATE OF MINNESOTA ARCHITECTURAL AND ENGINEERING DIVISION

A J NELSON STATE ARCHITECT

DATE REVISED: 8-10-61

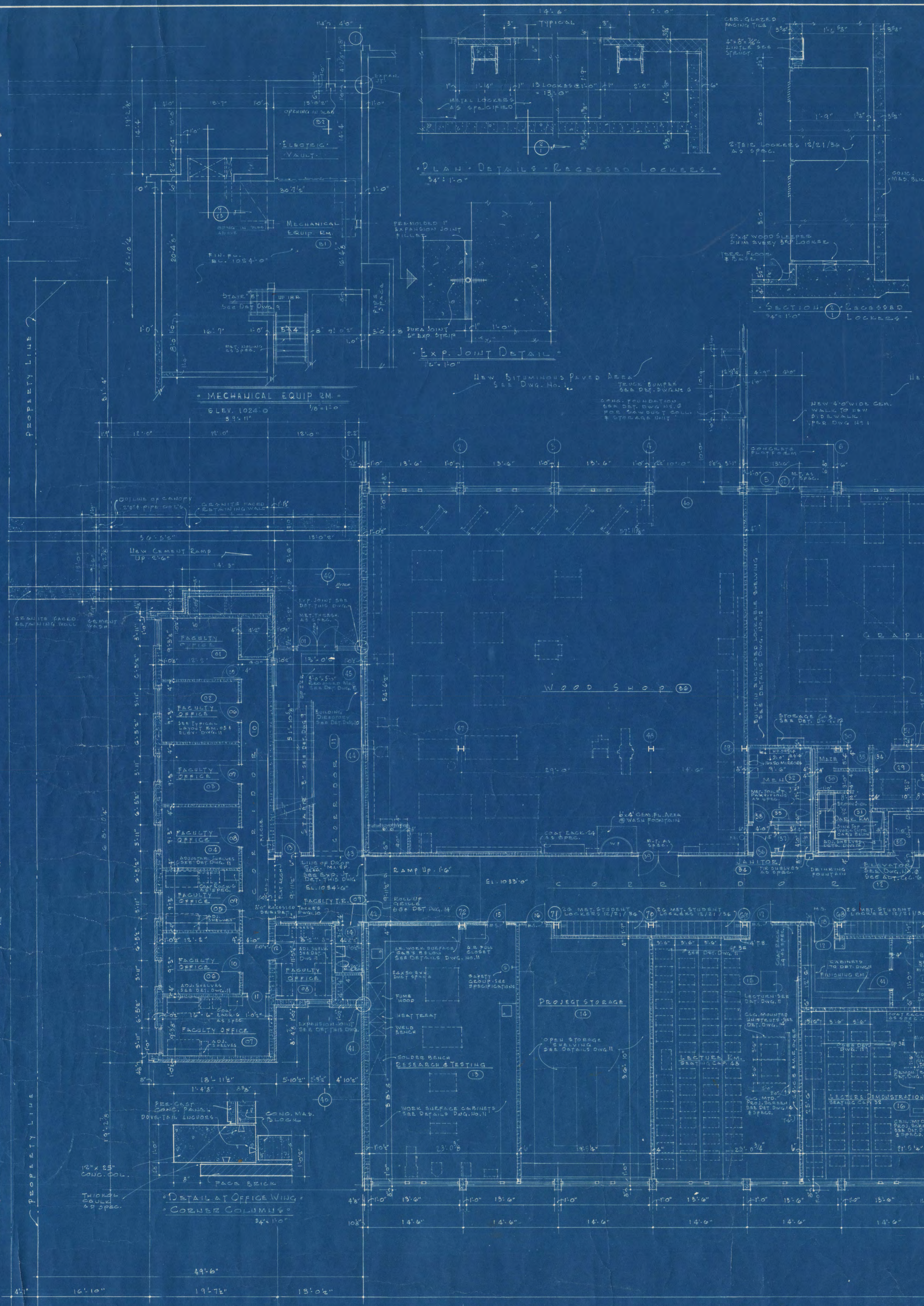
APPROVED BY: *James A. Budd* PRESIDENT OF STATE COLLEGE

CHECKED BY: *Frank W. Jackson* ASSOCIATE ENGINEER

SHEET NO. 19 OF 21

STATE PROJECT NO. 9930

PLOT PLAN - BLOCK



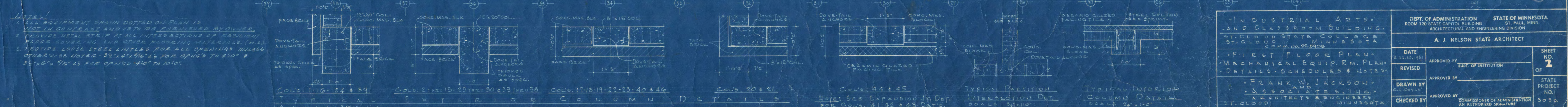
**DOOR SCHEDULE**

MARK	DOOR SIZE	TYPE	FRAME	GLASS	TRANSP.	REMARKS	MATL.	DOOR SIZE	TYPE	FRAME	GLASS	TRANSP.	REMARKS	
	HEIGHT	WIDTH	THICK					HEIGHT	WIDTH	THICK				
01	7'0"	1'5 1/2"	1 3/4"	—	H.M.	UPPER	—	7'0"	1'5 1/2"	1 3/4"	D	H.M.	UPPER	—
02	7'0"	3'0"	1 3/4"	—	H.M.	—	—	7'0"	3'0"	1 3/4"	D	H.M.	—	—
03	7'0"	1'5 1/2"	1 3/4"	—	H.M.	UPPER	—	7'0"	1'5 1/2"	1 3/4"	D	H.M.	UPPER	—
04	7'0"	3'0"	1 3/4"	—	H.M.	—	—	7'0"	3'0"	1 3/4"	D	H.M.	—	—
05	6'8"	2'8"	1 3/4"	—	H.M.	—	—	6'8"	2'8"	1 3/4"	B	H.M.	—	—
06	6'8"	3'0"	1 3/4"	—	H.M.	—	—	6'8"	3'0"	1 3/4"	B	H.M.	—	—
07	6'8"	2'8"	1 3/4"	—	H.M.	—	—	6'8"	2'8"	1 3/4"	D	H.M.	—	—
08	6'8"	3'0"	1 3/4"	—	H.M.	—	—	6'8"	3'0"	1 3/4"	D	H.M.	—	—
09	6'8"	2'8"	1 3/4"	—	H.M.	—	—	6'8"	2'8"	1 3/4"	B	H.M.	—	—
10	6'8"	2'8"	1 3/4"	—	H.M.	—	—	6'8"	2'8"	1 3/4"	D	H.M.	—	—
11	6'8"	2'8"	1 3/4"	—	H.M.	—	—	6'8"	2'8"	1 3/4"	B	H.M.	—	—
12	6'8"	2'8"	1 3/4"	—	H.M.	—	—	6'8"	2'8"	1 3/4"	B	H.M.	—	—
13	6'8"	3'0"	1 3/4"	—	H.M.	—	—	6'8"	3'0"	1 3/4"	D	H.M.	—	—
14	6'8"	3'0"	1 3/4"	—	H.M.	—	—	6'8"	3'0"	1 3/4"	D	H.M.	—	—
15	6'8"	3'0"	1 3/4"	—	H.M.	—	—	6'8"	3'0"	1 3/4"	D	H.M.	—	—
16	6'8"	3'0"	1 3/4"	—	H.M.	—	—	6'8"	3'0"	1 3/4"	D	H.M.	—	—
17	6'8"	3'0"	1 3/4"	—	H.M.	—	—	6'8"	3'0"	1 3/4"	D	H.M.	—	—
18	6'8"	3'0"	1 3/4"	—	H.M.	—	—	6'8"	3'0"	1 3/4"	D	H.M.	—	—
19	6'8"	3'0"	1 3/4"	—	H.M.	—	—	6'8"	3'0"	1 3/4"	D	H.M.	—	—
20	6'8"	3'0"	1 3/4"	—	H.M.	—	—	6'8"	3'0"	1 3/4"	D	H.M.	—	—
21	6'8"	3'0"	1 3/4"	—	H.M.	—	—	6'8"	3'0"	1 3/4"	D	H.M.	—	—
22	6'8"	3'0"	1 3/4"	—	H.M.	—	—	6'8"	3'0"	1 3/4"	D	H.M.	—	—
23	6'8"	3'0"	1 3/4"	—	H.M.	—	—	6'8"	3'0"	1 3/4"	D	H.M.	—	—
24	6'8"	3'0"	1 3/4"	—	H.M.	—	—	6'8"	3'0"	1 3/4"	D	H.M.	—	—
25	6'8"	3'0"	1 3/4"	—	H.M.	—	—	6'8"	3'0"	1 3/4"	D	H.M.	—	—

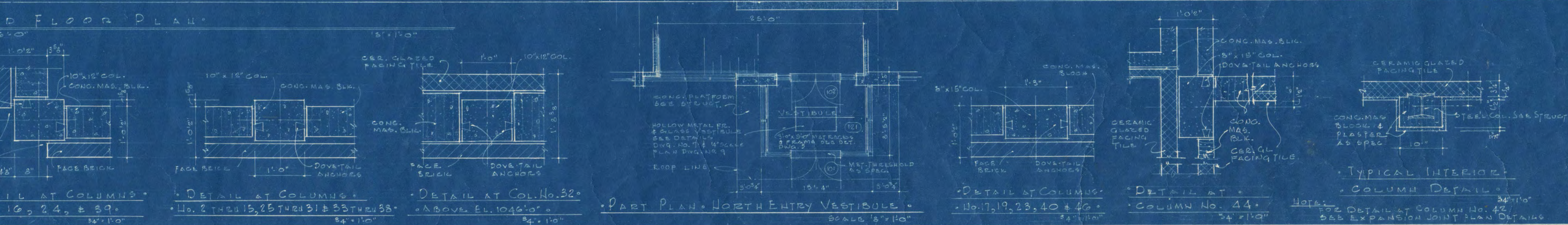
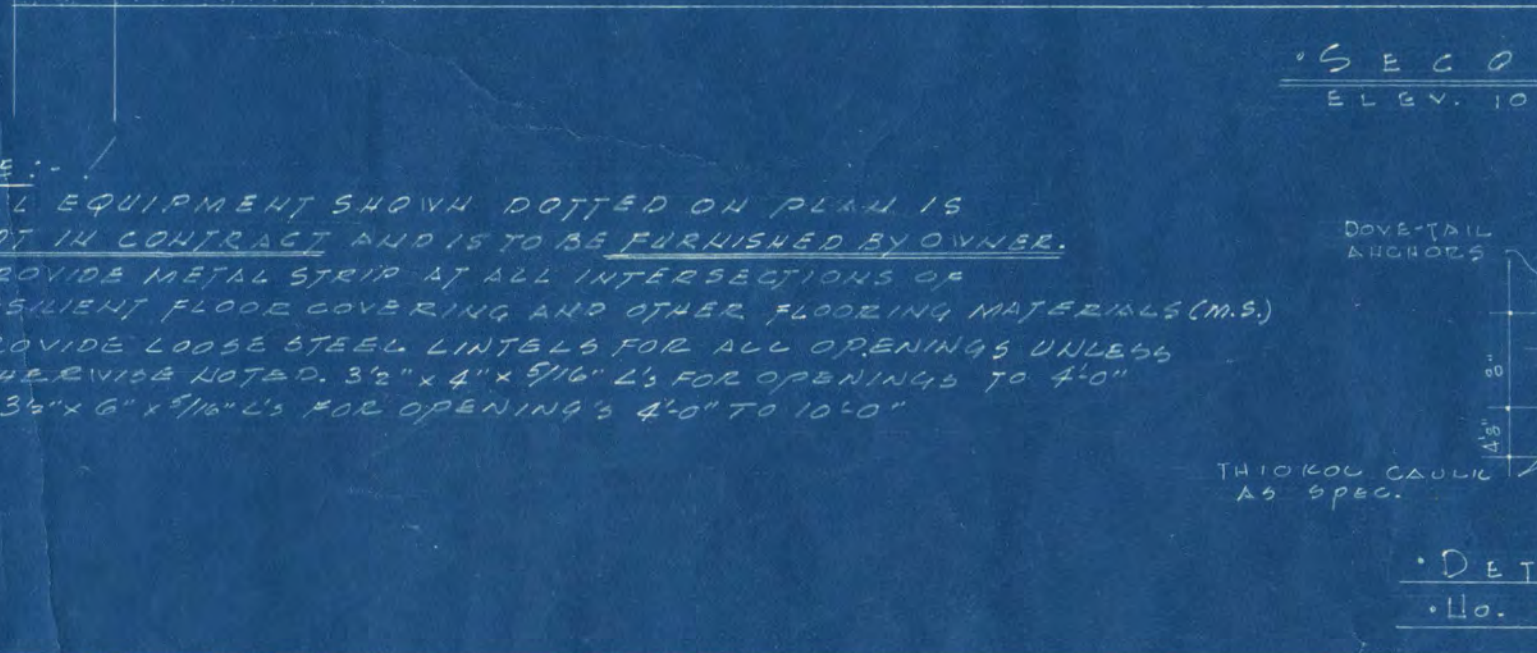
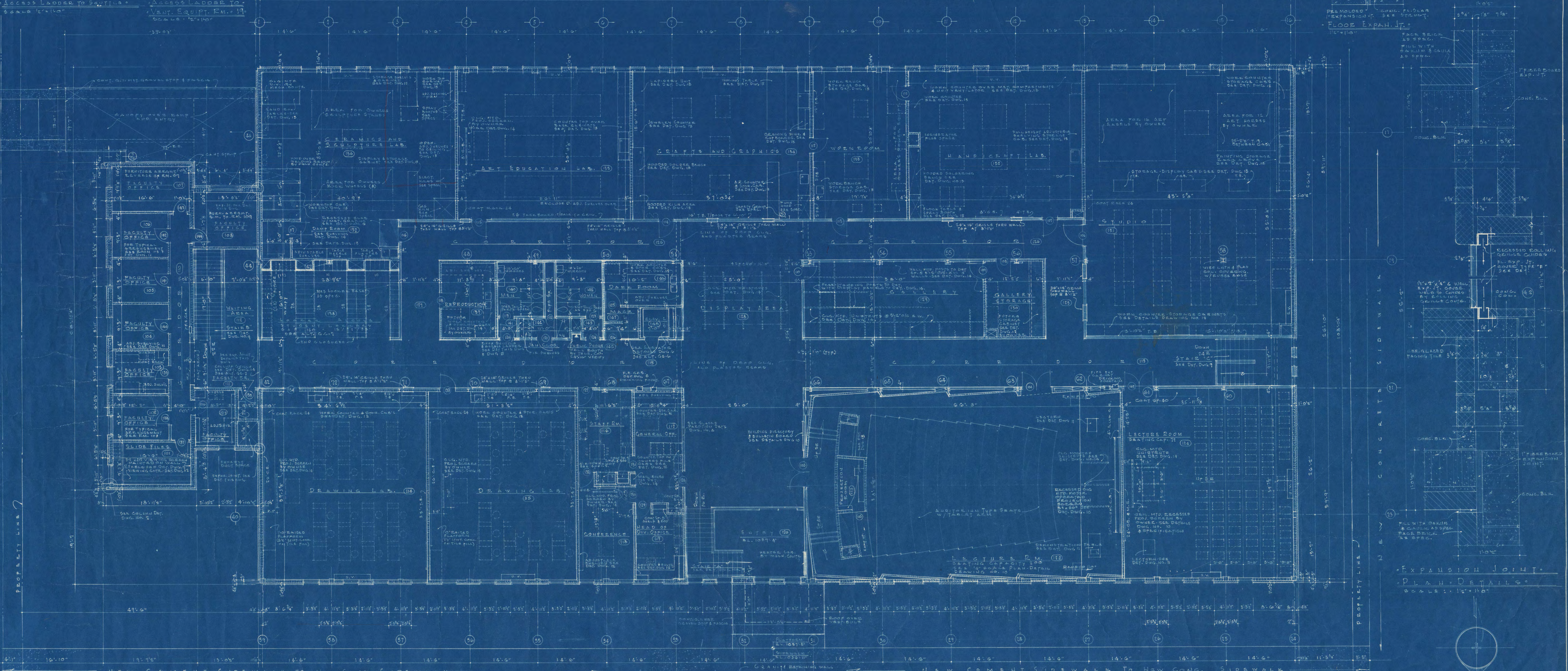
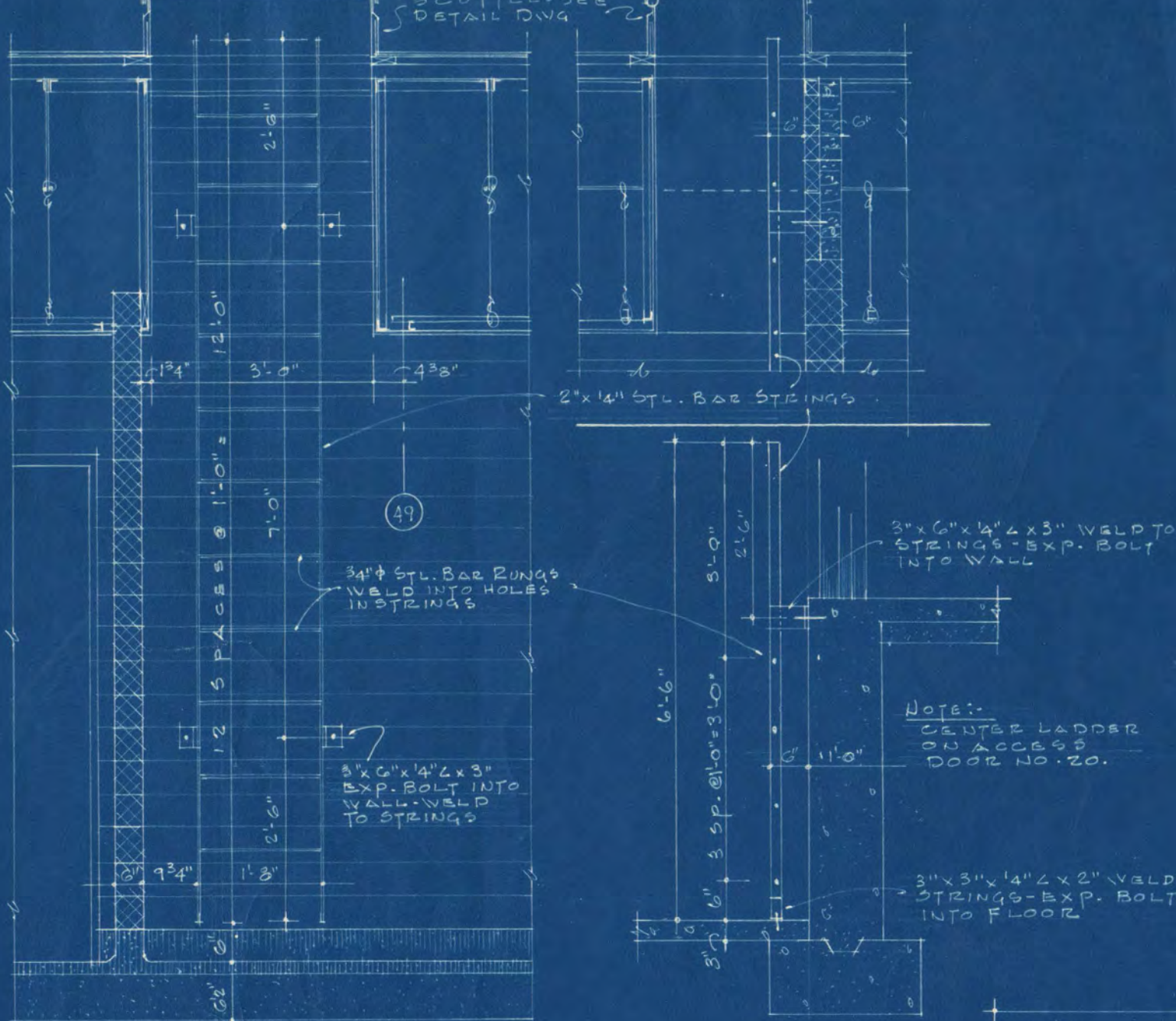
**ROOM AND SPACE FINISH SCHEDULE**

ROOM #	SPACE	FLOOR	BASE	WALLS	CEILING	TRIM	REMARKS
01	MECH. EQUIP. RM.						
02	MECH. EQUIP. RM.						
03	MECH. EQUIP. RM.						
04	MECH. EQUIP. RM.						
05	MECH. EQUIP. RM.						
06	MECH. EQUIP. RM.						
07	MECH. EQUIP. RM.						
08	MECH. EQUIP. RM.						
09	MECH. EQUIP. RM.						
10	MECH. EQUIP. RM.						
11	MECH. EQUIP. RM.						
12	MECH. EQUIP. RM.						
13	MECH. EQUIP. RM.						
14	MECH. EQUIP. RM.						
15	MECH. EQUIP. RM.						
16	MECH. EQUIP. RM.						
17	MECH. EQUIP. RM.						
18	MECH. EQUIP. RM.						
19	MECH. EQUIP. RM.						
20	MECH. EQUIP. RM.						
21	MECH. EQUIP. RM.						
22	MECH. EQUIP. RM.						
23	MECH. EQUIP. RM.						
24	MECH. EQUIP. RM.						
25	MECH. EQUIP. RM.						
26	MECH. EQUIP. RM.						
27	MECH. EQUIP. RM.						
28	MECH. EQUIP. RM.						
29	MECH. EQUIP. RM.						
30	MECH. EQUIP. RM.						
31	MECH. EQUIP. RM.						
32	MECH. EQUIP. RM.						
33	MECH. EQUIP. RM.						
34	MECH. EQUIP. RM.						
35	MECH. EQUIP. RM.						
36	MECH. EQUIP. RM.						
37	MECH. EQUIP. RM.						
38	MECH. EQUIP. RM.						
39	MECH. EQUIP. RM.						
40	MECH. EQUIP. RM.						
41	MECH. EQUIP. RM.						
42	MECH. EQUIP. RM.						
43	MECH. EQUIP. RM.						
44	MECH. EQUIP. RM.						
45	MECH. EQUIP. RM.						
46	MECH. EQUIP. RM.						
47	MECH. EQUIP. RM.						
48	MECH. EQUIP. RM.						
49	MECH. EQUIP. RM.						
50	MECH. EQUIP. RM.						
51	MECH. EQUIP. RM.						
52	MECH. EQUIP. RM.						
53	MECH. EQUIP. RM.						
54	MECH. EQUIP. RM.						
55	MECH. EQUIP. RM.						
56	MECH. EQUIP. RM.						
57	MECH. EQUIP. RM.						
58	MECH. EQUIP. RM.						
59	MECH. EQUIP. RM.						
60	MECH. EQUIP. RM.						

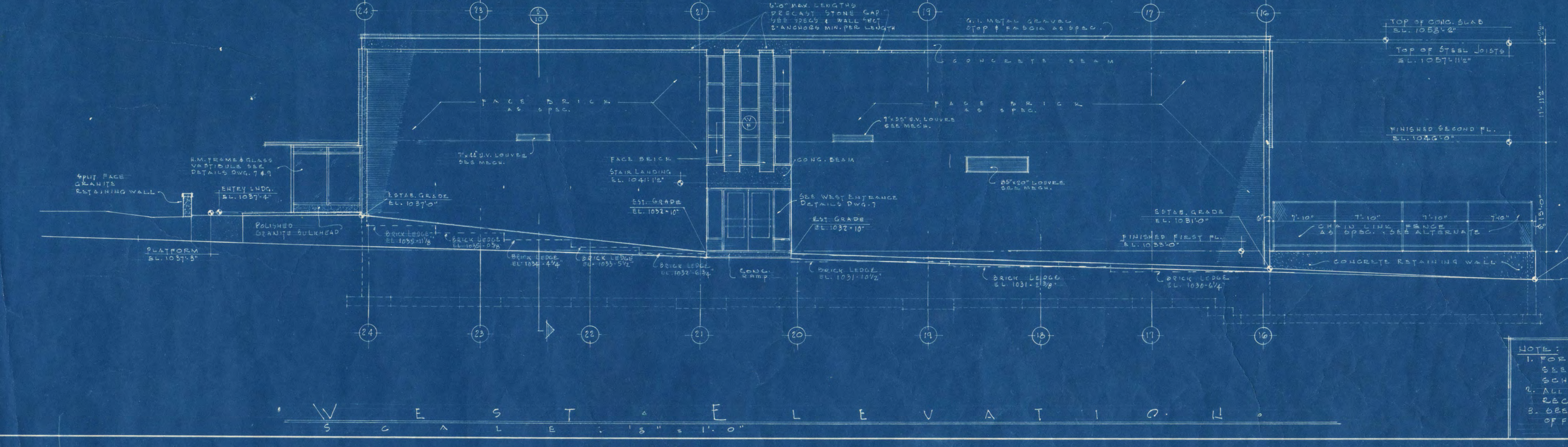
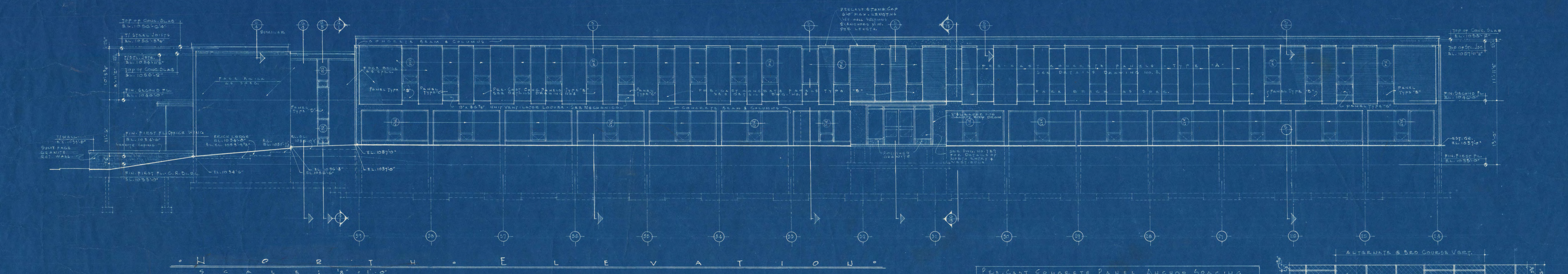
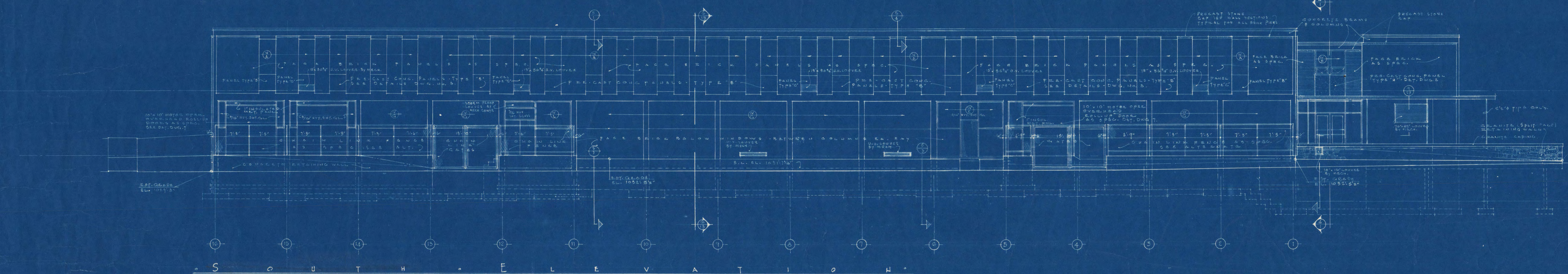
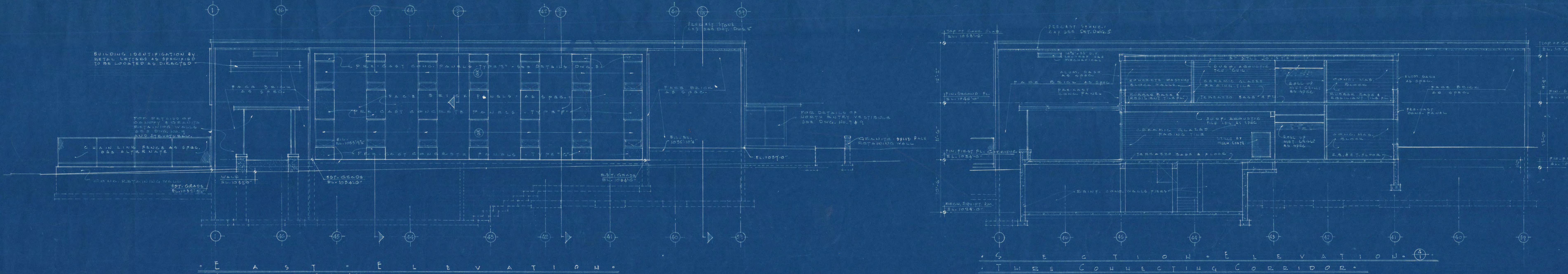
**FIRST FLOOR PLAN - ELEVATION 1033'-0"**



DOOR SCHEDULE														WALL AND PARTITION SCHEDULE														FLOOR FINISH SCHEDULE														CEILING SCHEDULE													
NO.	HEIGHT	WIDTH	THICKNESS	TYPE	FRAME	GLASS	TRANSOM	Q.M. MARKS	REMARKS	NO.	HEIGHT	WIDTH	THICKNESS	TYPE	FRAME	GLASS	TRANSOM	REMARKS	FLOOR	BASE	WALLS	CEILING	TRIM	REMARKS	NO.	HEIGHT	WIDTH	THICKNESS	TYPE	FRAME	GLASS	TRANSOM	REMARKS	FLOOR	BASE	WALLS	CEILING	TRIM	REMARKS																
101	7'-0"	2'-0"	1 1/2"	A	H.M.	W/PA			SEE DETAIL	101	8'-0"	8'-0"	1 1/2"	B	H.M.	W/PA		WOOD LAMBER	WOOD LAMBER	WOOD LAMBER	WOOD LAMBER	WOOD LAMBER	WOOD LAMBER	101	8'-0"	8'-0"	1 1/2"	B	H.M.	W/PA		WOOD LAMBER	WOOD LAMBER	WOOD LAMBER	WOOD LAMBER	WOOD LAMBER	WOOD LAMBER																		

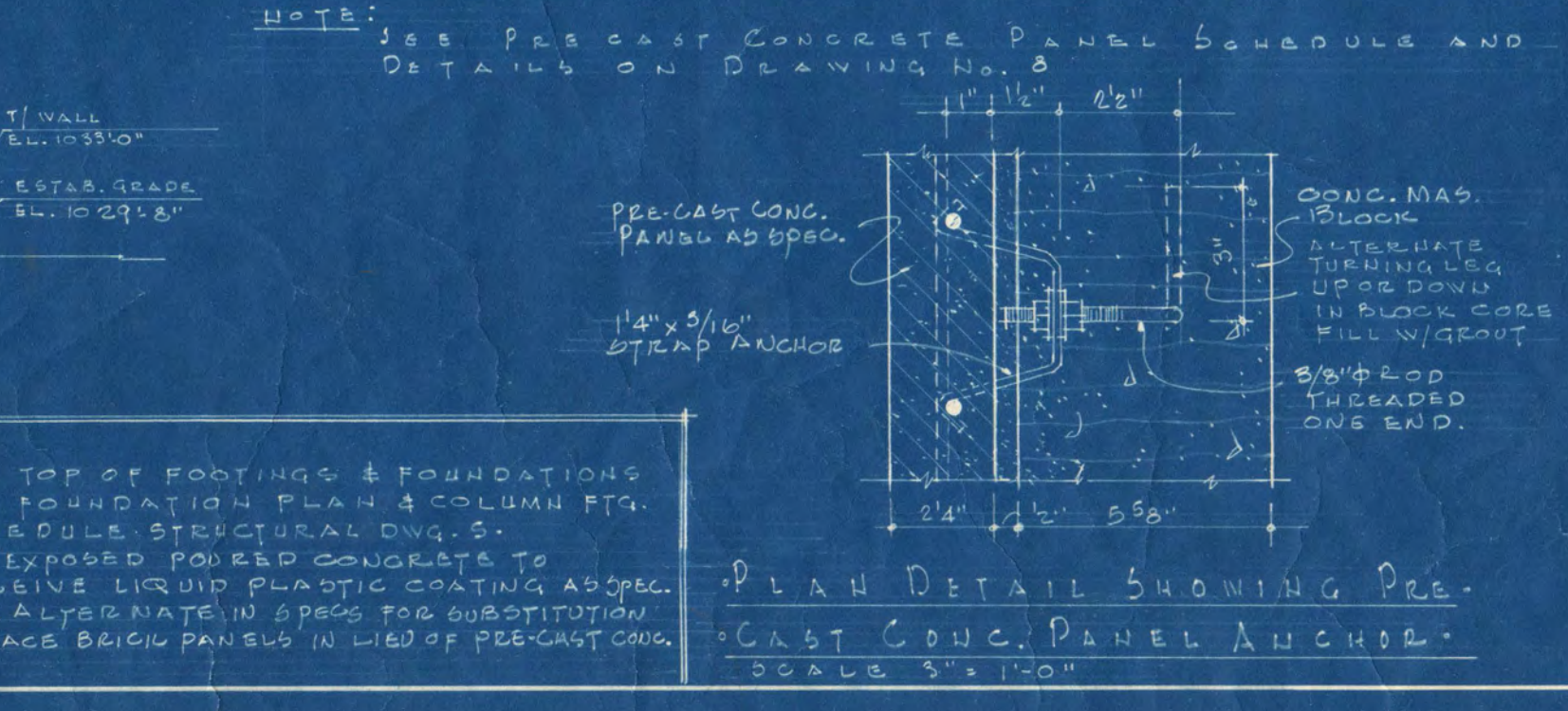
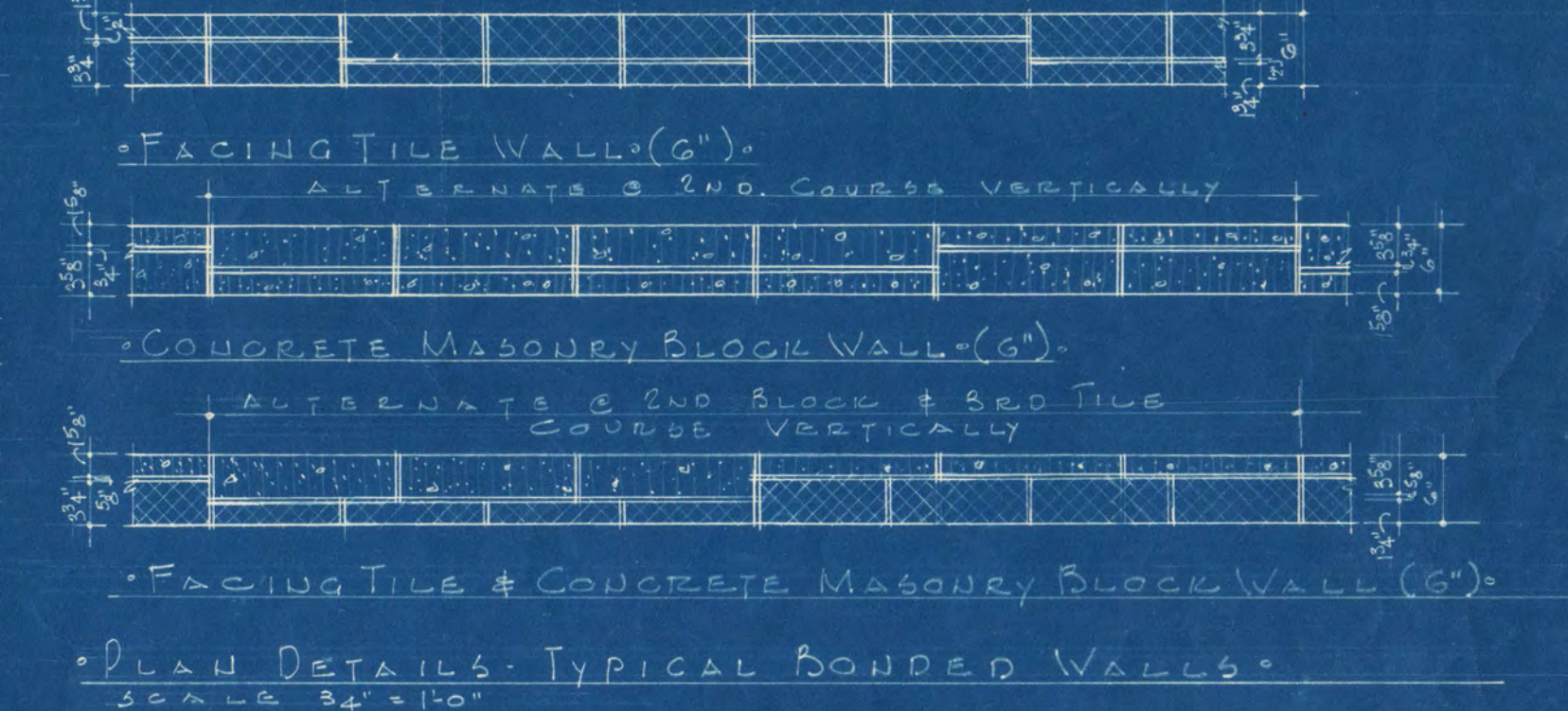


INDUSTRIAL ARTS AND CLASSROOM BUILDING - ST. CLOUD STATE COLLEGE		DEPT. OF ADMINISTRATION - STATE OF MINNESOTA	
ST. CLOUD STATE COLLEGE - ST. CLOUD, MINN.		ARCHITECTURAL AND ENGINEERING DIVISION	
A. J. NELSON STATE ARCHITECT			
DATE: 3-10-34	APPROVED BY: CHIEF OF INSTITUTION	SHEET NO. 3	
REVISED:	APPROVED BY:	STATE PROJECT	
DRAWN BY: E. J. BOYER	APPROVED BY:	MINNESOTA PROJECT	
CHECKED BY:	APPROVED BY: COMMISSIONERS OF ADMINISTRATION	300 G	
DRAWN BY: FRANK W. JACKSON		STATE PROJECT	
ARCHITECTS: A. S. BOGERT & SONS, INC.		MINNESOTA	
ST. CLOUD		300 G	



**PRE-CAST CONCRETE PANEL ANCHOR SPACING**

PANEL TYPE	PANEL WIDTH	HORIZ. ANCHORS		PANEL HEIGHT	VERTICAL ANCHORS	
		START SPACING	END SPACING		TOP SPACING	BOFF. SP.
A	3'-5"	76"	1 @ 112"	96"	10'-5 1/2"	8 1/2"
B	3'-5"	96"	1 @ 112"	96"	5'-5 1/2"	8 1/2"
C	3'-5"	96"	1 @ 112"	96"	2'-5 1/2"	6"
D	2'-8"	6"	1 @ 112"	6"	10'-4 1/2"	10 1/4"
E	3'-10 1/2"	11 1/4"	1 @ 210"	11 1/4"	2'-4"	6"
F	3'-10 1/2"	11 1/4"	1 @ 210"	11 1/4"	2'-4 1/2"	10 1/4"
G	3'-10 1/2"	11 1/4"	1 @ 210"	11 1/4"	1'-18"	6 1/2"
H	2'-8"	9 1/2"	2 @ 214"	9 1/2"	5'-5 1/2"	8 1/2"



**INDUSTRIAL ARTS AND CLASSROOM BUILDING**  
 ROOM 120 STATE CAPITOL BUILDING  
 ST. CLOUD STATE COLLEGE  
 ST. CLOUD, MINN. 56301

**DEPT. OF ADMINISTRATION**  
 ARCHITECTURAL AND ENGINEERING DIVISION

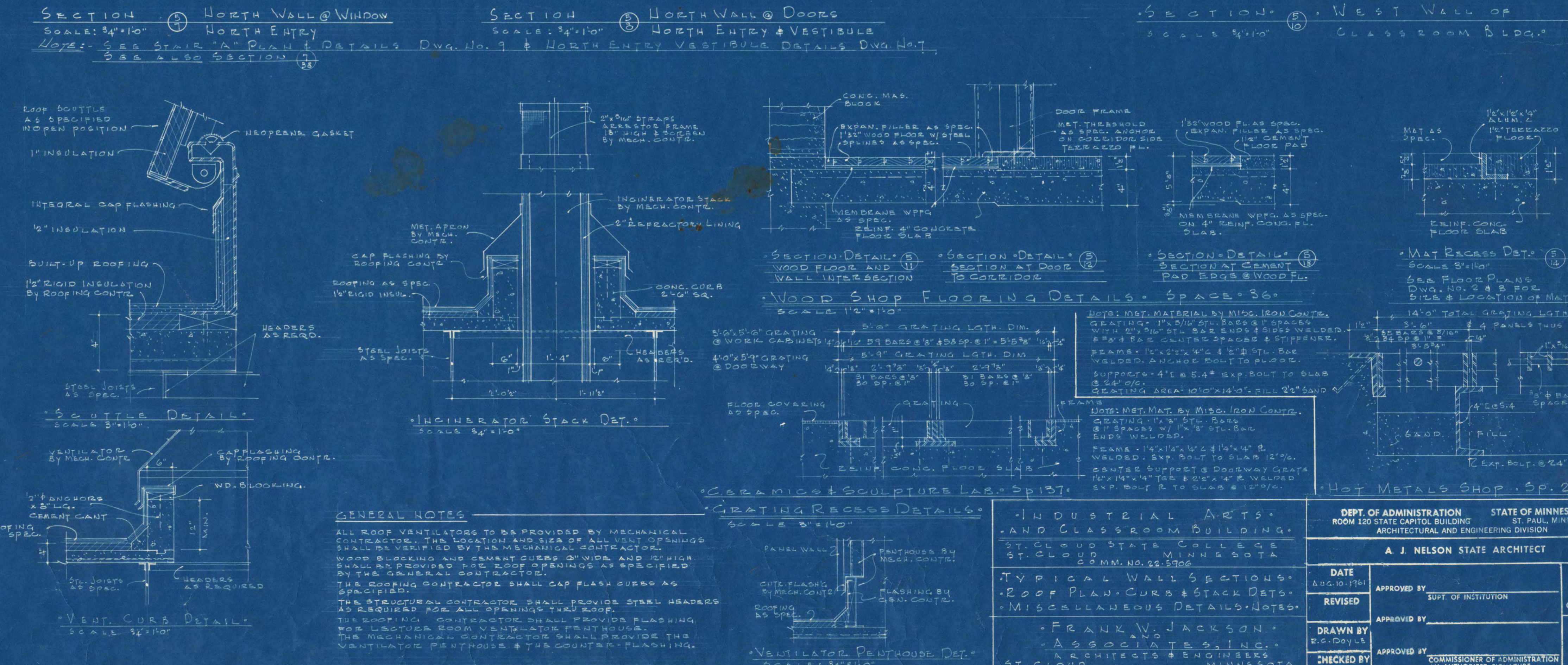
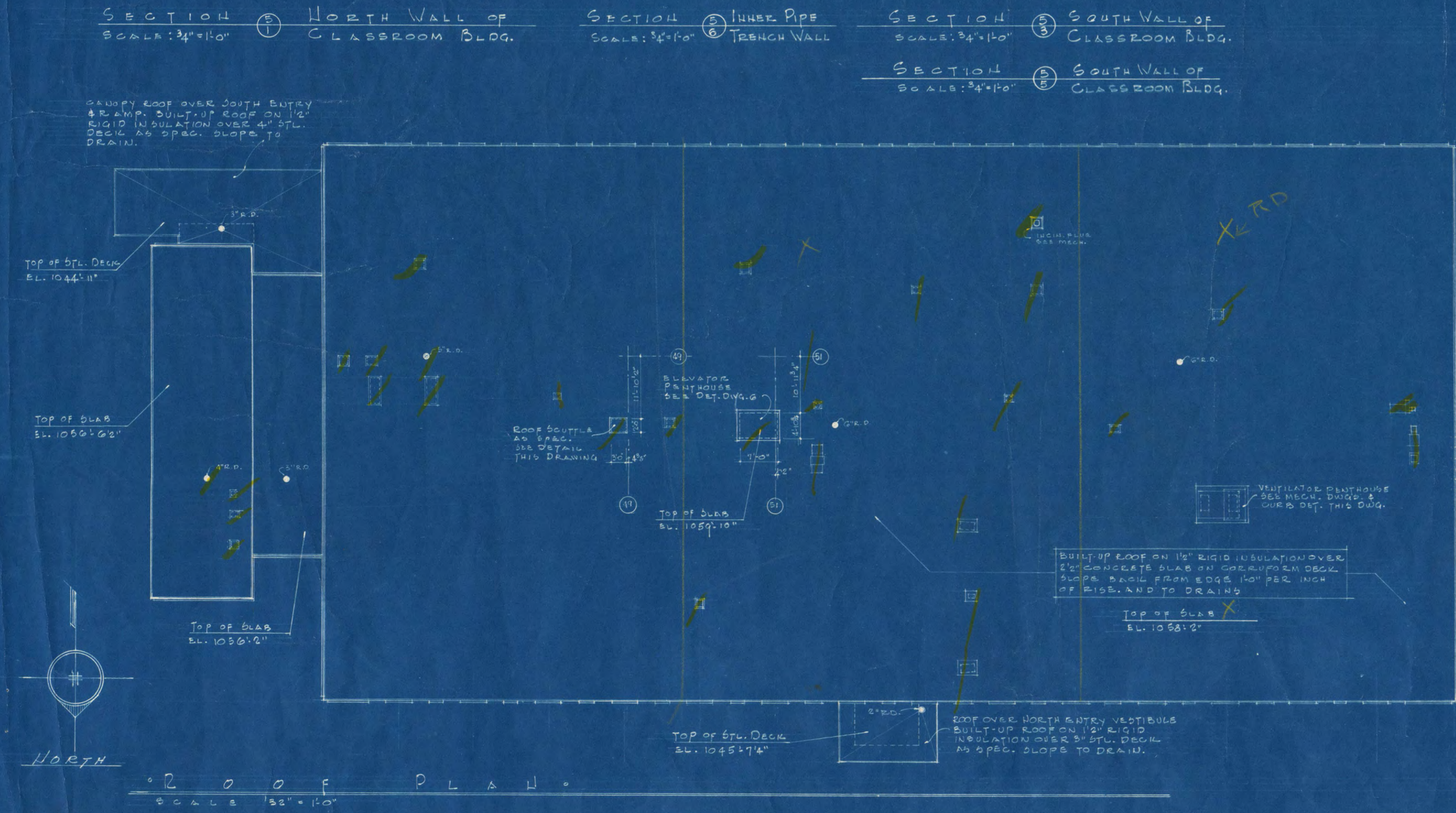
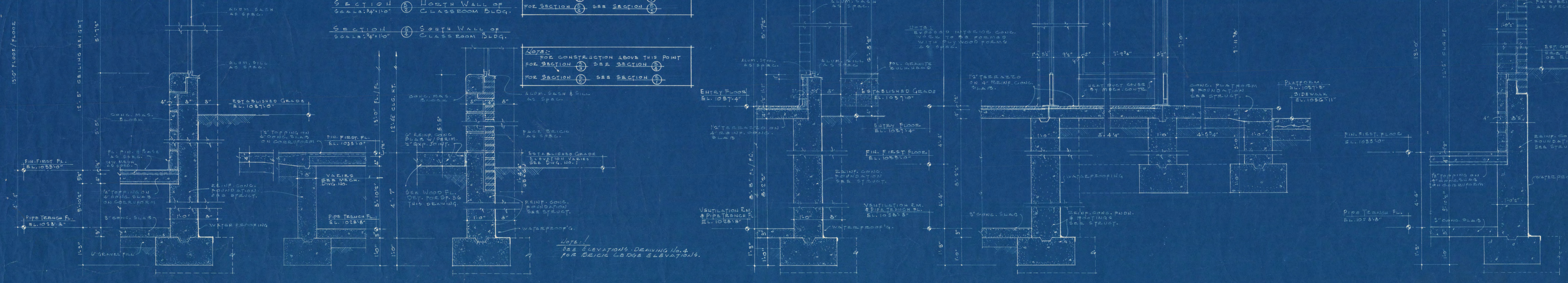
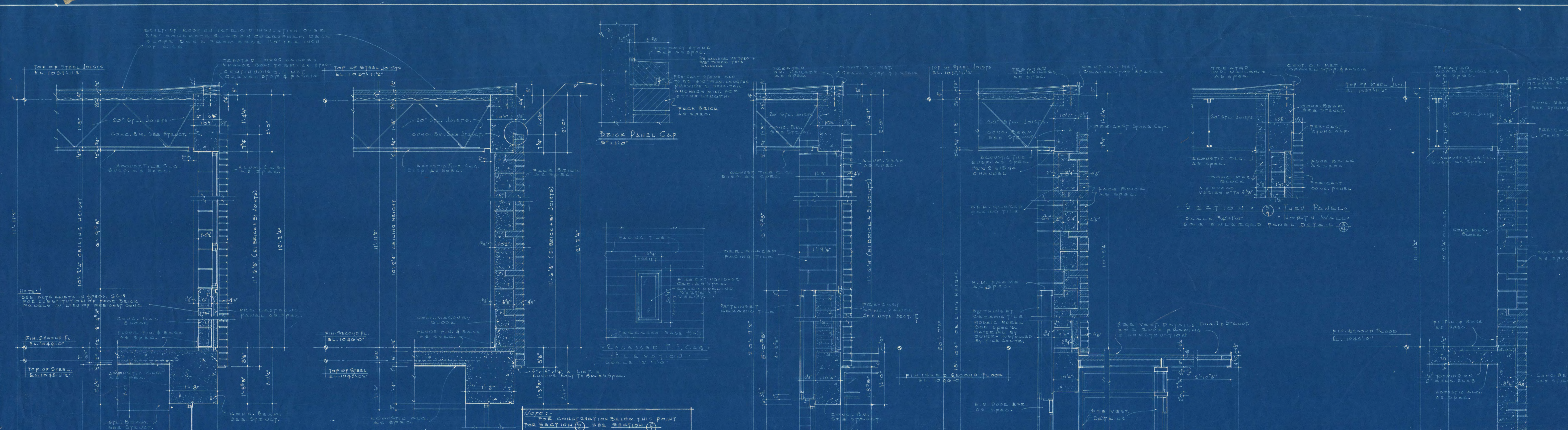
**STATE OF MINNESOTA**  
 A. J. NELSON STATE ARCHITECT

**DATE** 5/15/61  
**REVISION**

**APPROVED BY** [Signature]  
**STATE PROJECT NO.** 2000

**DRAWN BY** R. G. DYLLA  
**CHECKED BY** [Signature]

**INDUSTRIAL ARTS**



**GENERAL NOTES**  
 ALL ROOF VENTILATORS TO BE PROVIDED BY MECHANICAL CONTRACTOR. THE LOCATION AND SIZE OF ALL ROOF OPENINGS SHALL BE VERIFIED BY THE MECHANICAL CONTRACTOR. WOOD BRACKETING AND BRACKET BOLTS SHALL BE PROVIDED BY THE GENERAL CONTRACTOR.  
 THE ROOFING CONTRACTOR SHALL PROVIDE FLASHING AT ALL ROOF PENETRATIONS. THE STRUCTURAL CONTRACTOR SHALL PROVIDE STEEL HEADERS AS SPECIFIED.  
 THE ROOFING CONTRACTOR SHALL PROVIDE FLASHING FOR ALL ROOF PENETRATIONS. THE MECHANICAL CONTRACTOR SHALL PROVIDE THE VENTILATOR PENETRATIONS AND THE ROOF FLASHING.

<b>INDUSTRIAL ARTS AND CLASSROOM BUILDING.</b>		DEPT. OF ADMINISTRATION STATE OF MINNESOTA ROOM 120 STATE CAPITOL BLDG. ST. PAUL, MINN. ARCHITECTURAL AND ENGINEERING DIVISION	
ST. CLOUD STATE COLLEGE ST. CLOUD S.D. MINN. NO. 22,350		<b>A J NELSON STATE ARCHITECT</b>	
DATE AUGUST 1917	APPROVED BY Supt. of Institution	DATE	SHEET NO. 5
REVISED	APPROVED BY		STATE PROJECT NO. 5039
DRAWN BY F. J. JACKSON	APPROVED BY	COMMISSIONER OF DEMONSTRATION AN AUTHORIZED SIGNATURE	
CHECKED BY			