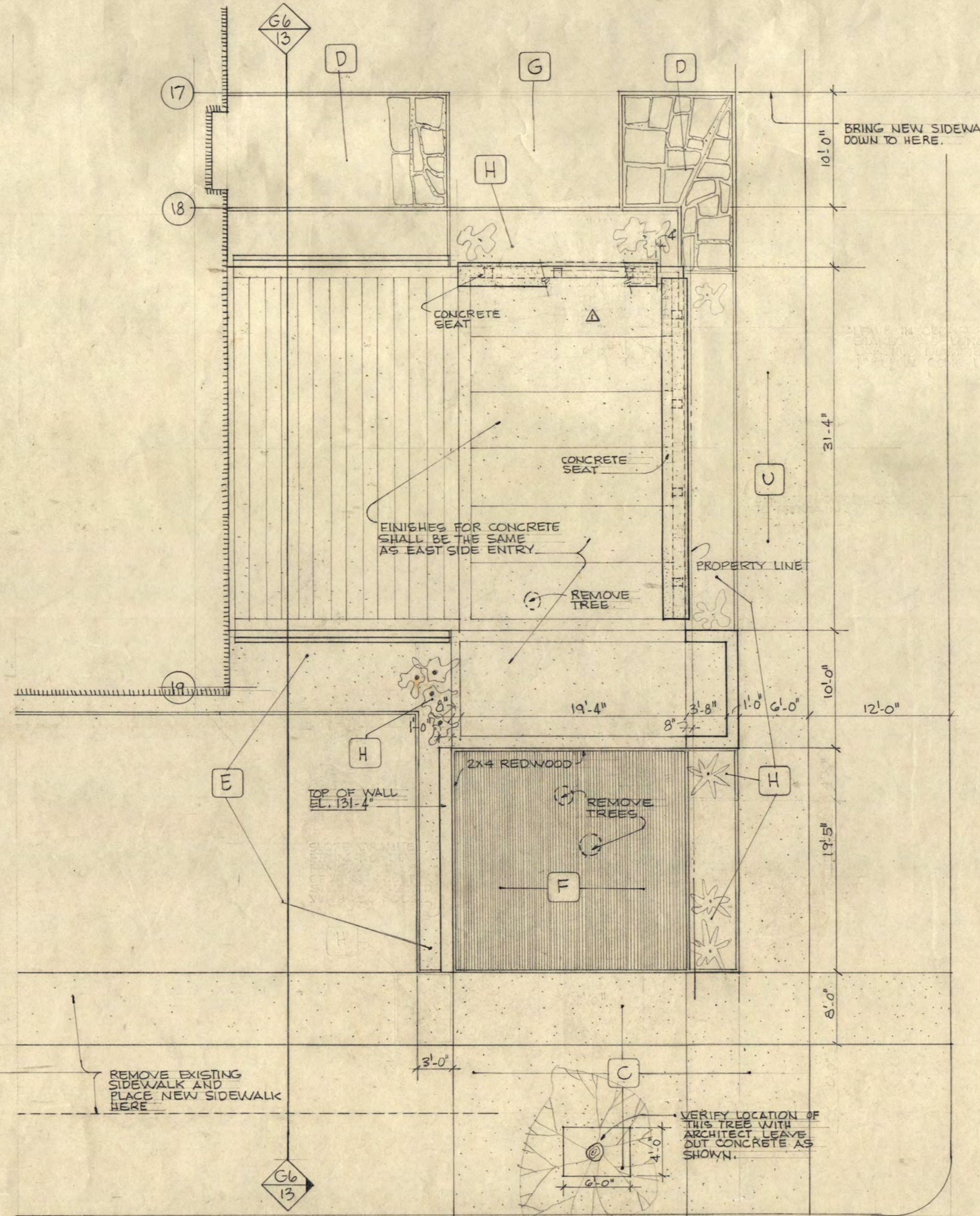
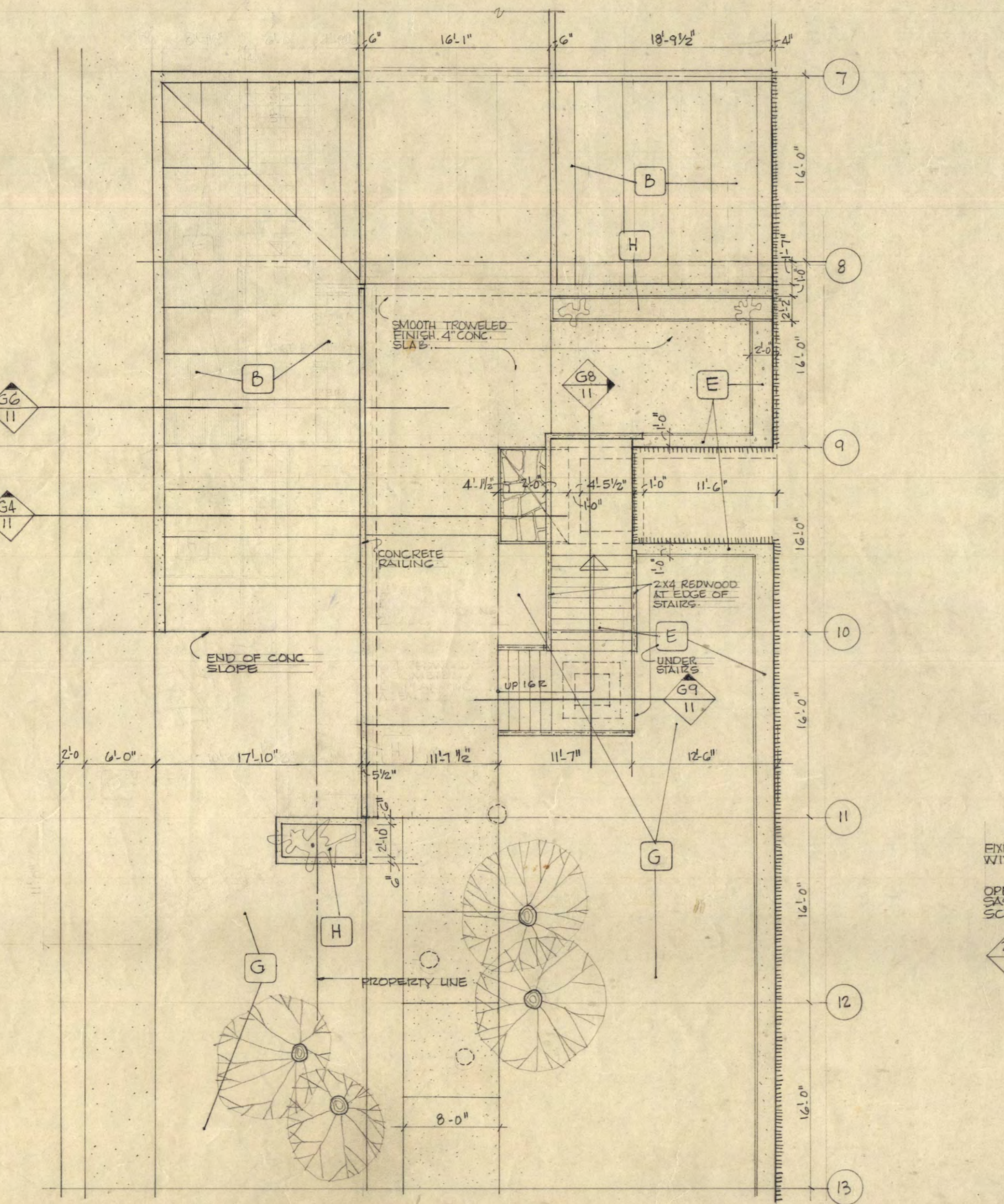


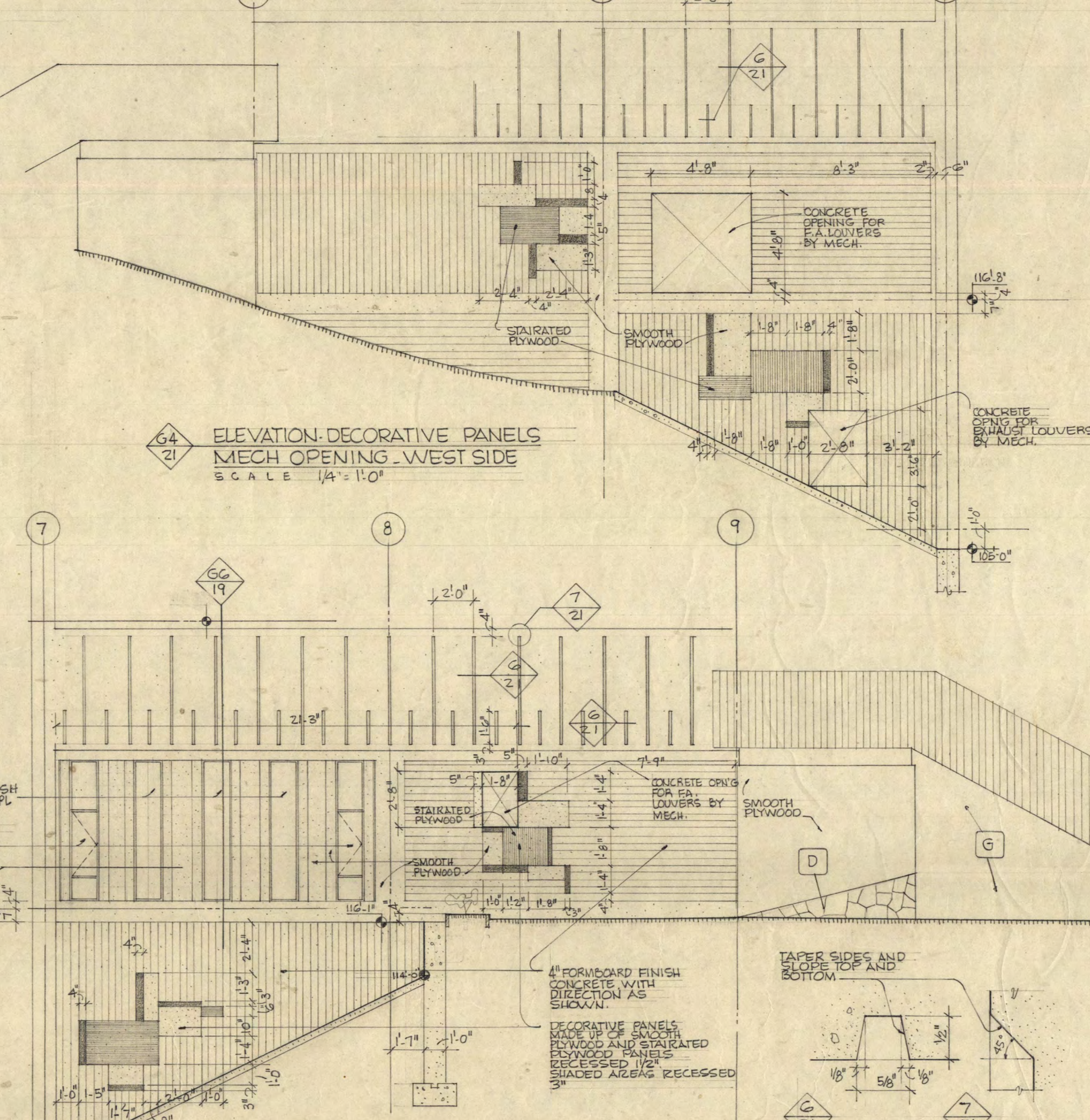
ENLARGED PLAN OF EAST SIDE ENTRY TO GYMNASIUM  
SCALE 1/8" = 1'-0"



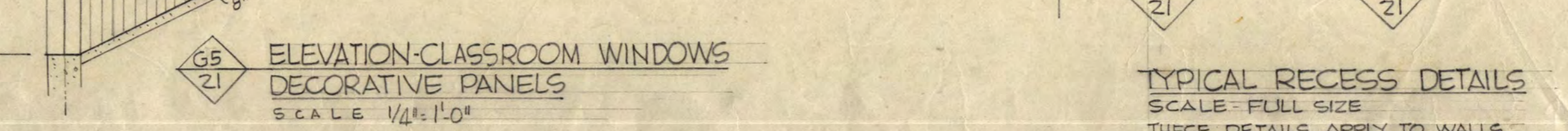
ENLARGED PLAN OF WEST SIDE ENTRY TO GYMNASIUM  
SCALE 1/8" = 1'-0"



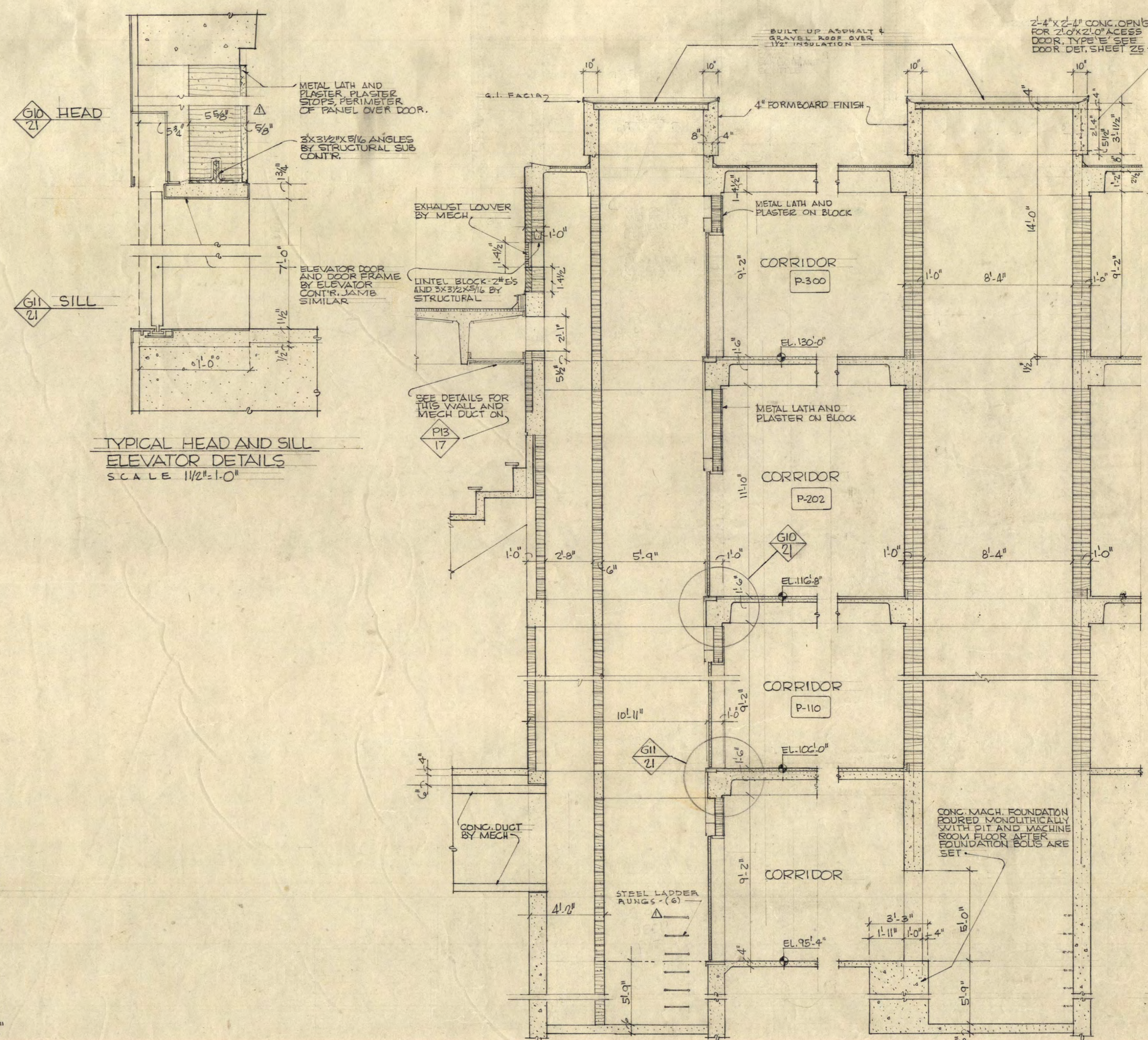
ENLARGED PLAN OF EAST SIDE ENTRY TO RAMPS  
SCALE 1/8" = 1'-0"



ELEVATION-DECORATIVE PANELS MECH. OPENING - WEST SIDE  
SCALE 1/4" = 1'-0"



ELEVATION-CLASSROOM WINDOWS DECORATIVE PANELS  
SCALE 1/4" = 1'-0"



TYPICAL HEAD AND SILL ELEVATOR DETAILS  
SCALE 1 1/2" = 1'-0"

SECTION THRU ELEVATOR AND MECH. SPACE  
SCALE 1/4" = 1'-0"

SECTION THRU ELEVATOR SPACE  
SCALE 1/4" = 1'-0"

TYPICAL RECESS DETAILS  
SCALE FULL SIZE  
THESE DETAILS APPLY TO WALLS AT GYMNASIUM AND OUTSIDE OF STORAGE R.C.

INSTRUCTIONAL BUILDING FOR PHYSICAL EDUCATION  
ST. CLOUD STATE COLLEGE ST. CLOUD, MINNESOTA

DEPARTMENT OF ADMINISTRATION STATE OF MINNESOTA  
ROOM 125 STATE CAPITOL BUILDING ST. PAUL, MINNESOTA

A.J. NELSON STATE ARCHITECT

ELEVATOR DETAILS

TRAYNOR AND HERMANSON ARCHITECTS ST. CLOUD

DATE 1-17-23  
DRAWN RAG  
CHECKED

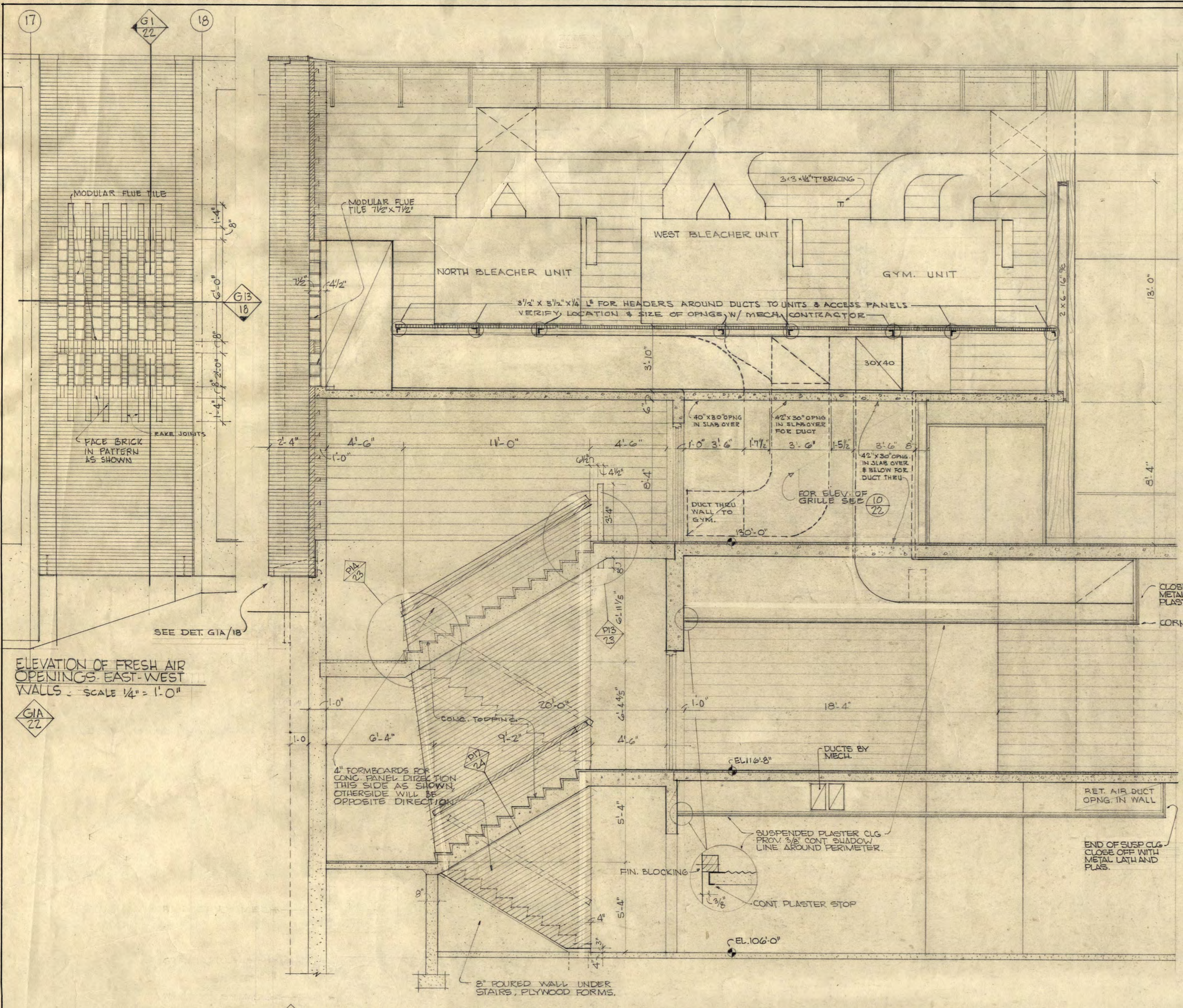
APPROVED BY: PRESIDENT BY CLOUD STATE COLLEGE  
APPROVED BY: STATE COLLEGE BOARD  
APPROVED BY: COMMISSIONER OF ADMINISTRATION AN APPROVED SUBSTITUTE

REVISIONS: AS BUILT

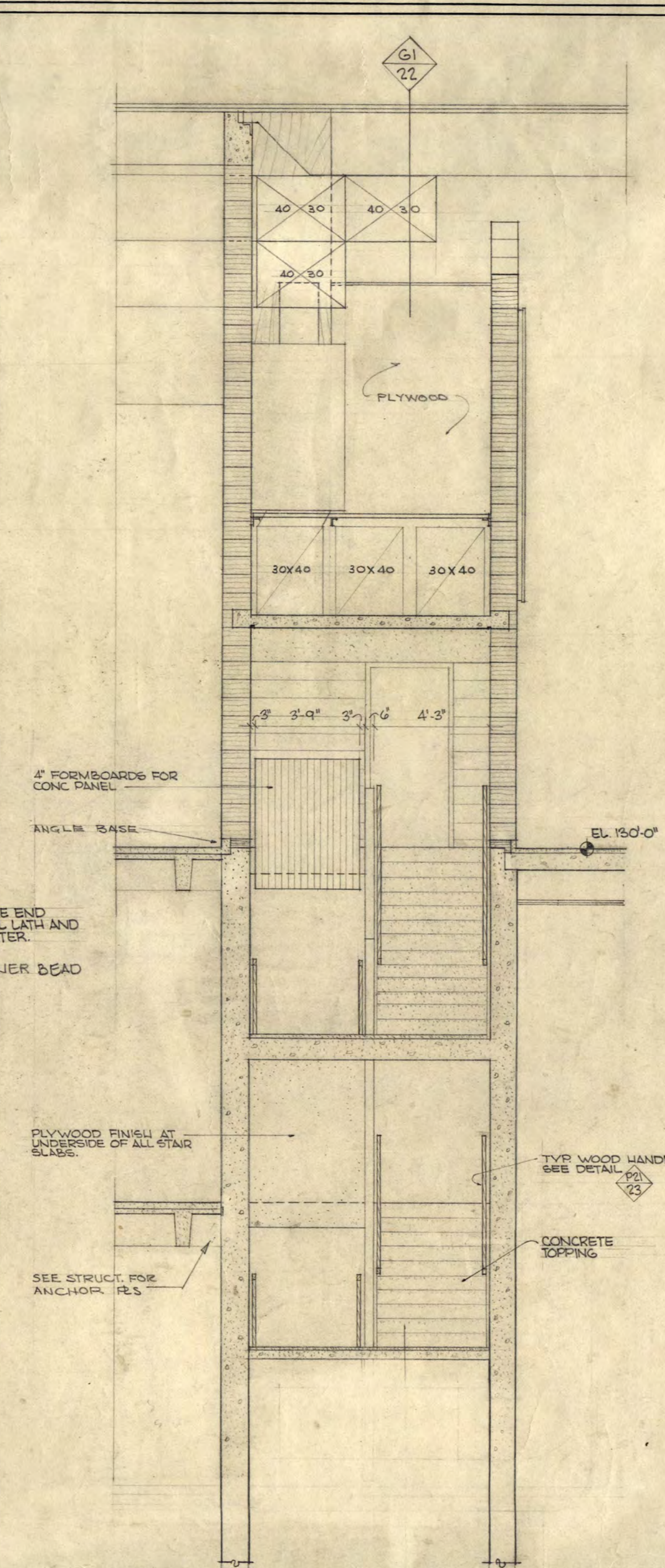
STATE PROJECT NUMBER: 3425

22

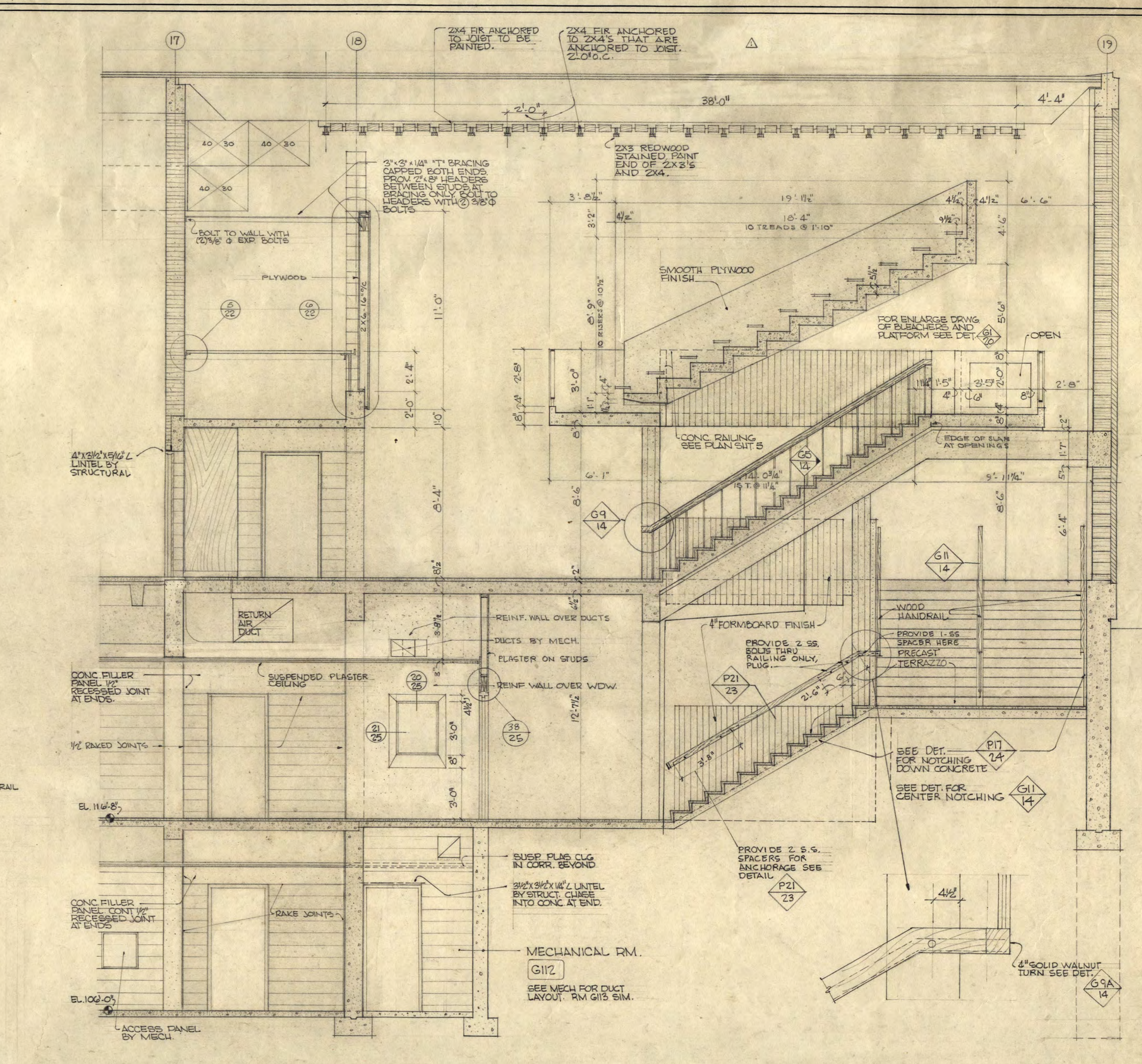
21



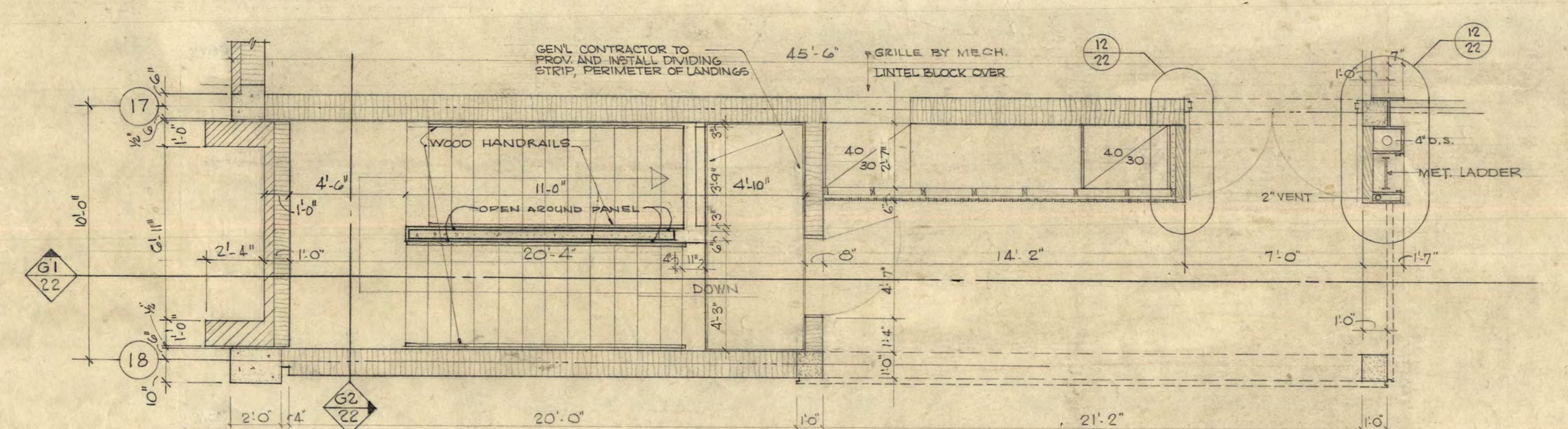
SECTION THRU STAIR 'D' & MECHANICAL EQUIPMENT ROOM G-402  
1/4" = 1'-0"



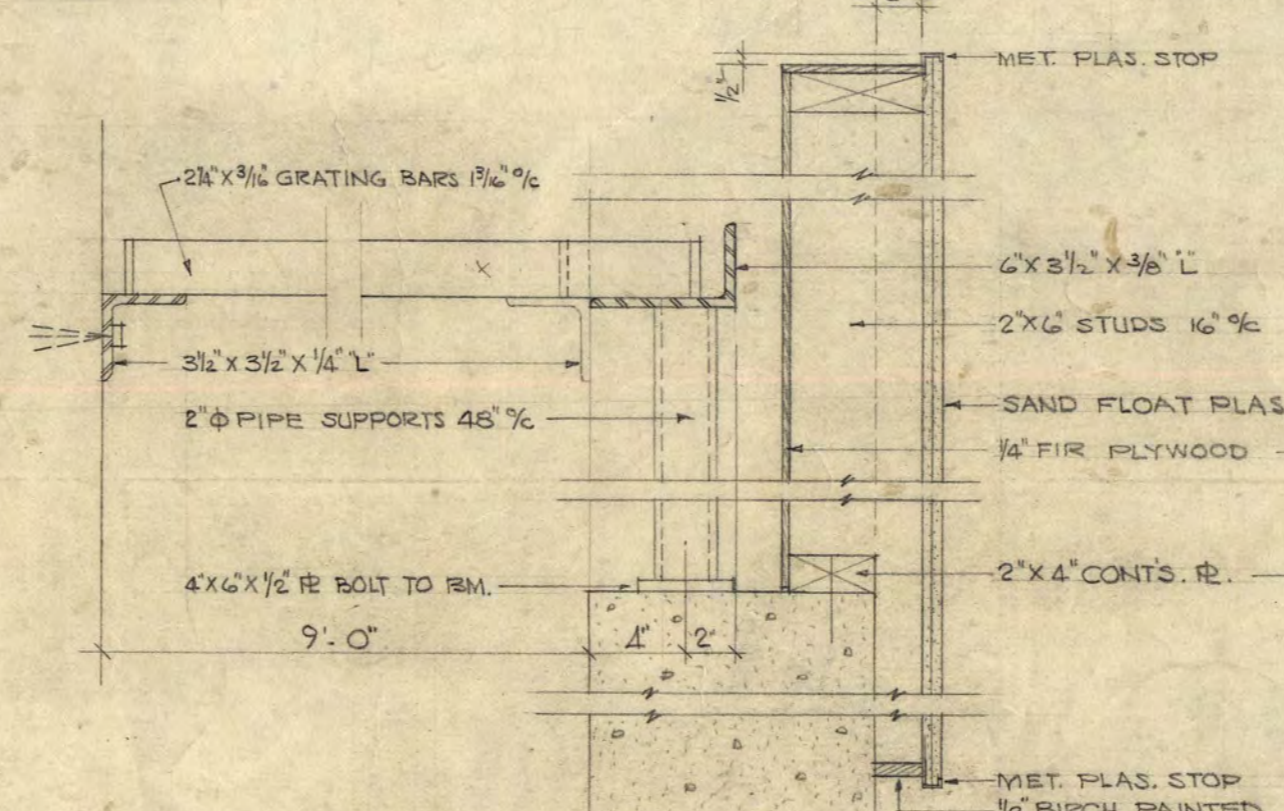
SECT THRU STAIR 'D' LANDINGS  
1/4" = 1'-0"



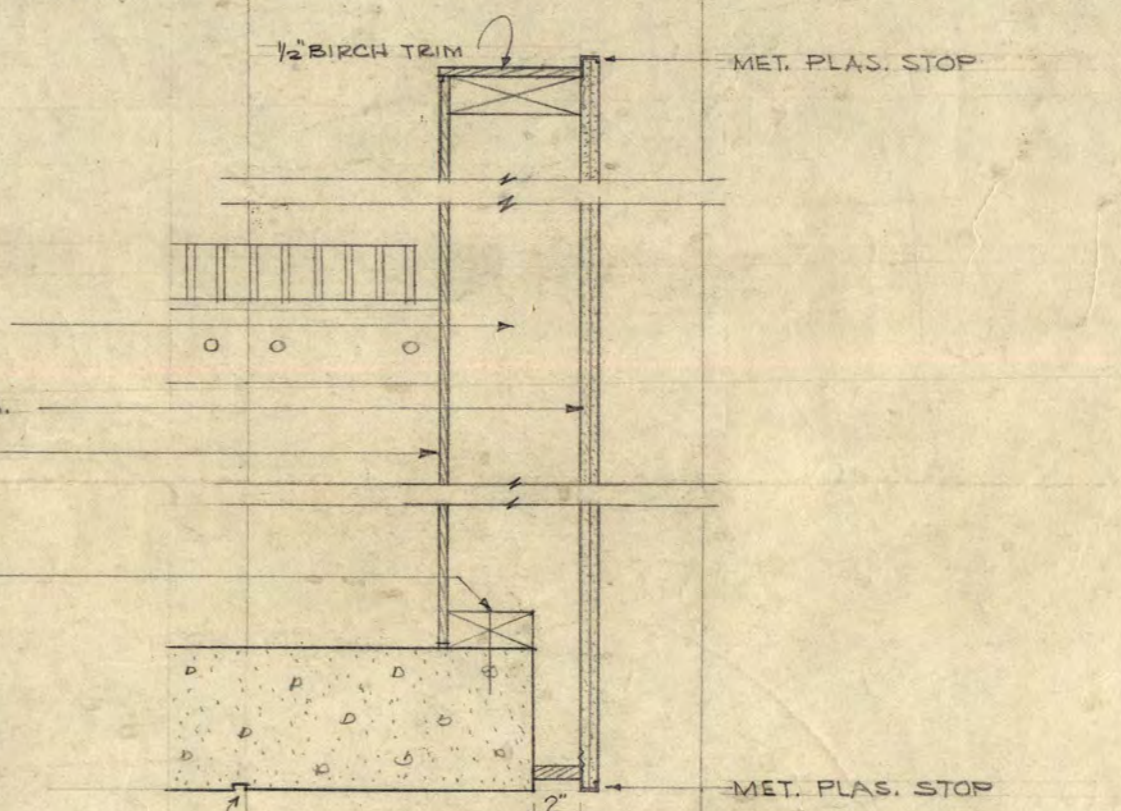
SECTION THRU PERMANENT BLEACHERS AND STAIR 'B'  
1/4" = 1'-0"



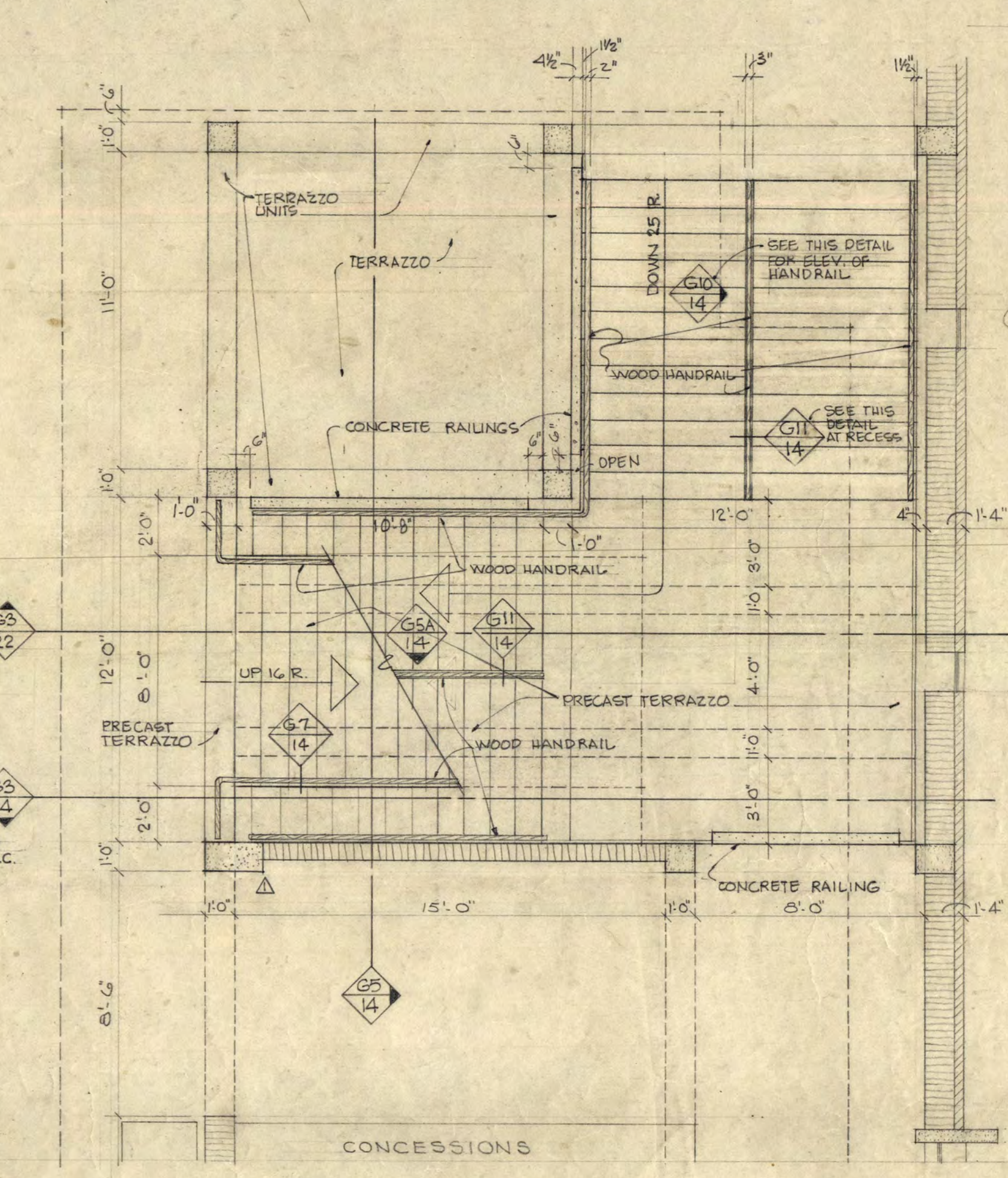
PLAN OF STAIR 'D' AT MAIN FLOOR LEVEL STAIR 'C' REVERSED  
1/4" = 1'-0"



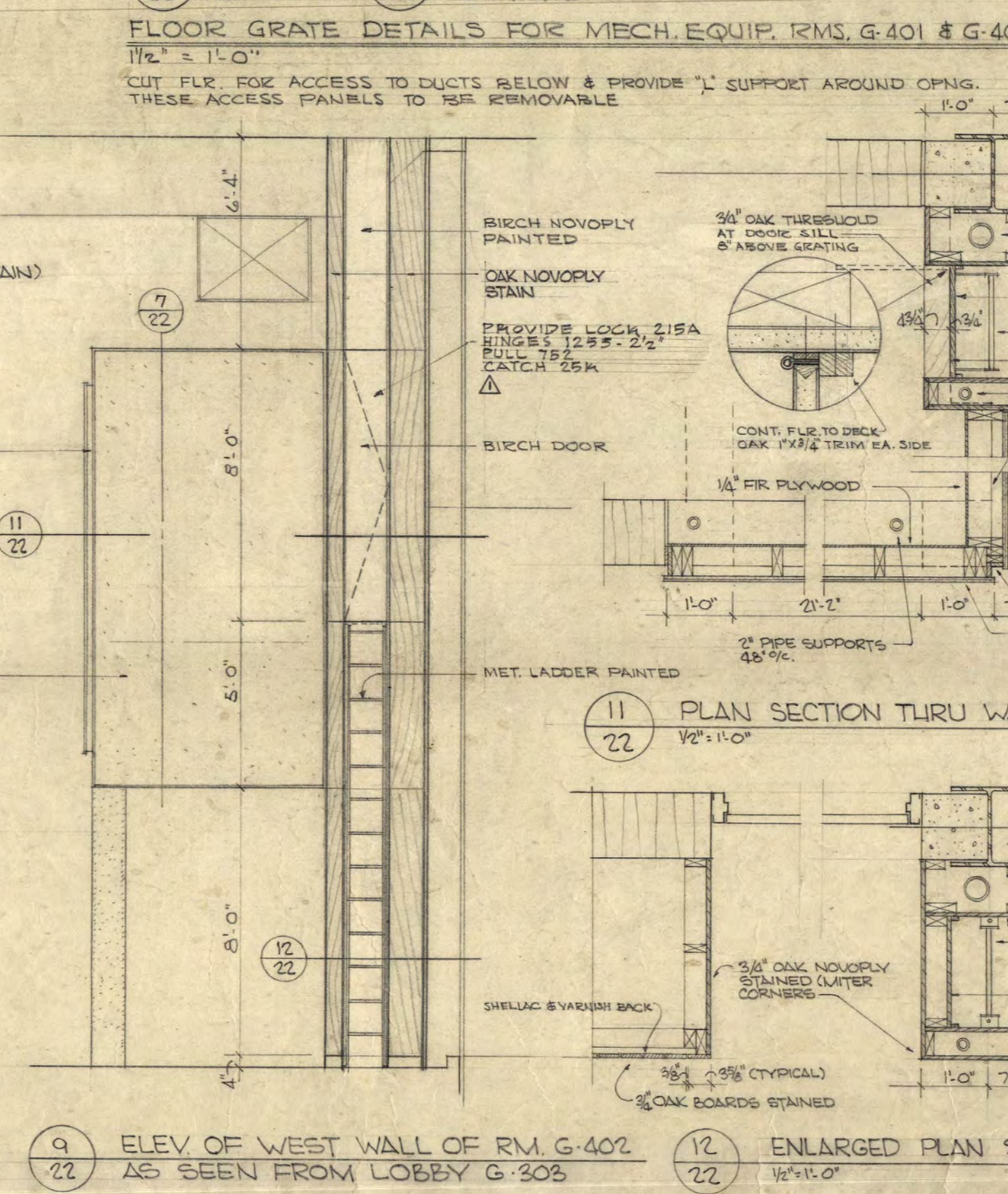
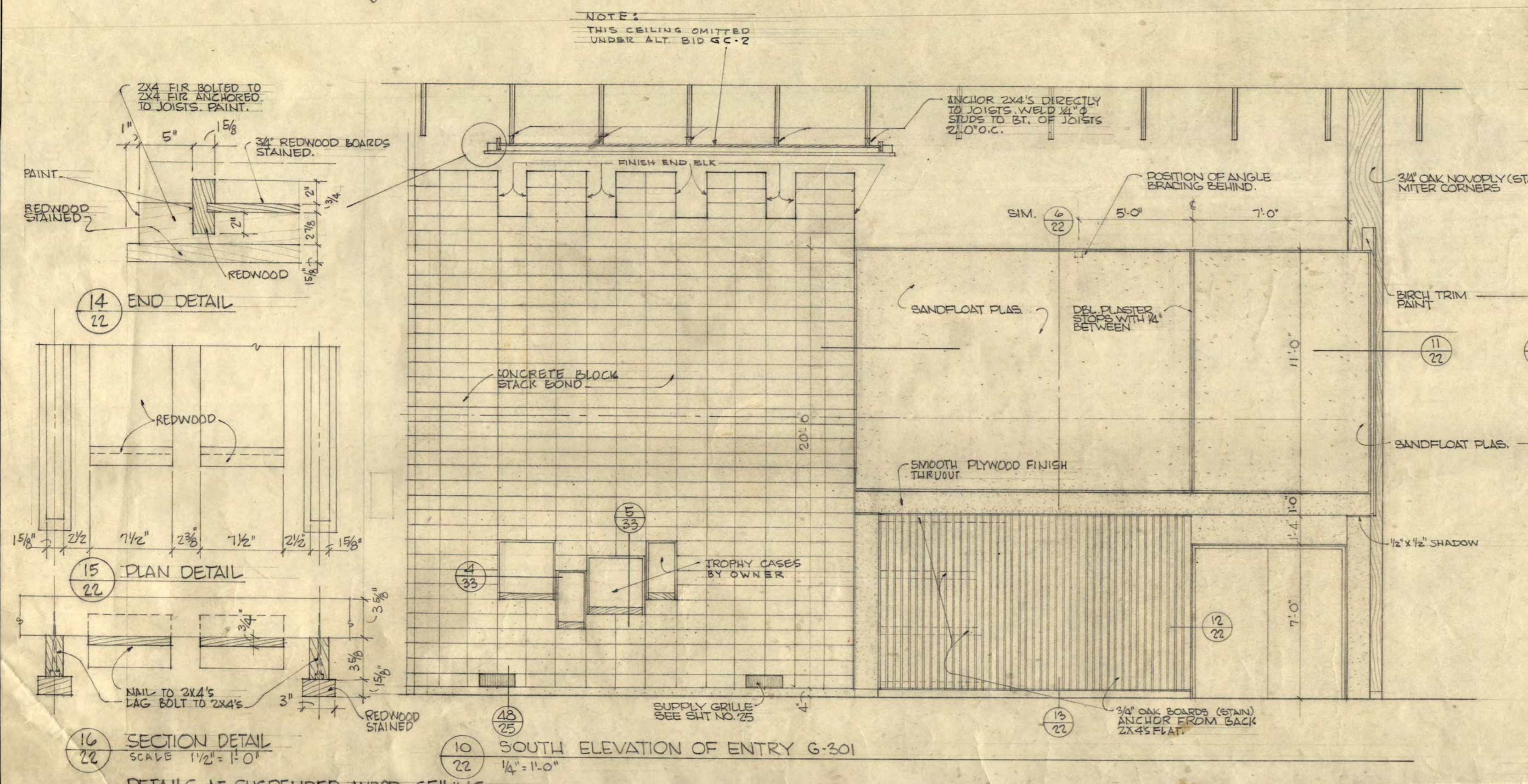
FLOOR GRATE DETAILS FOR MECH. EQUIP. RMS. G-401 & G-402  
1/2" x 1'-0"



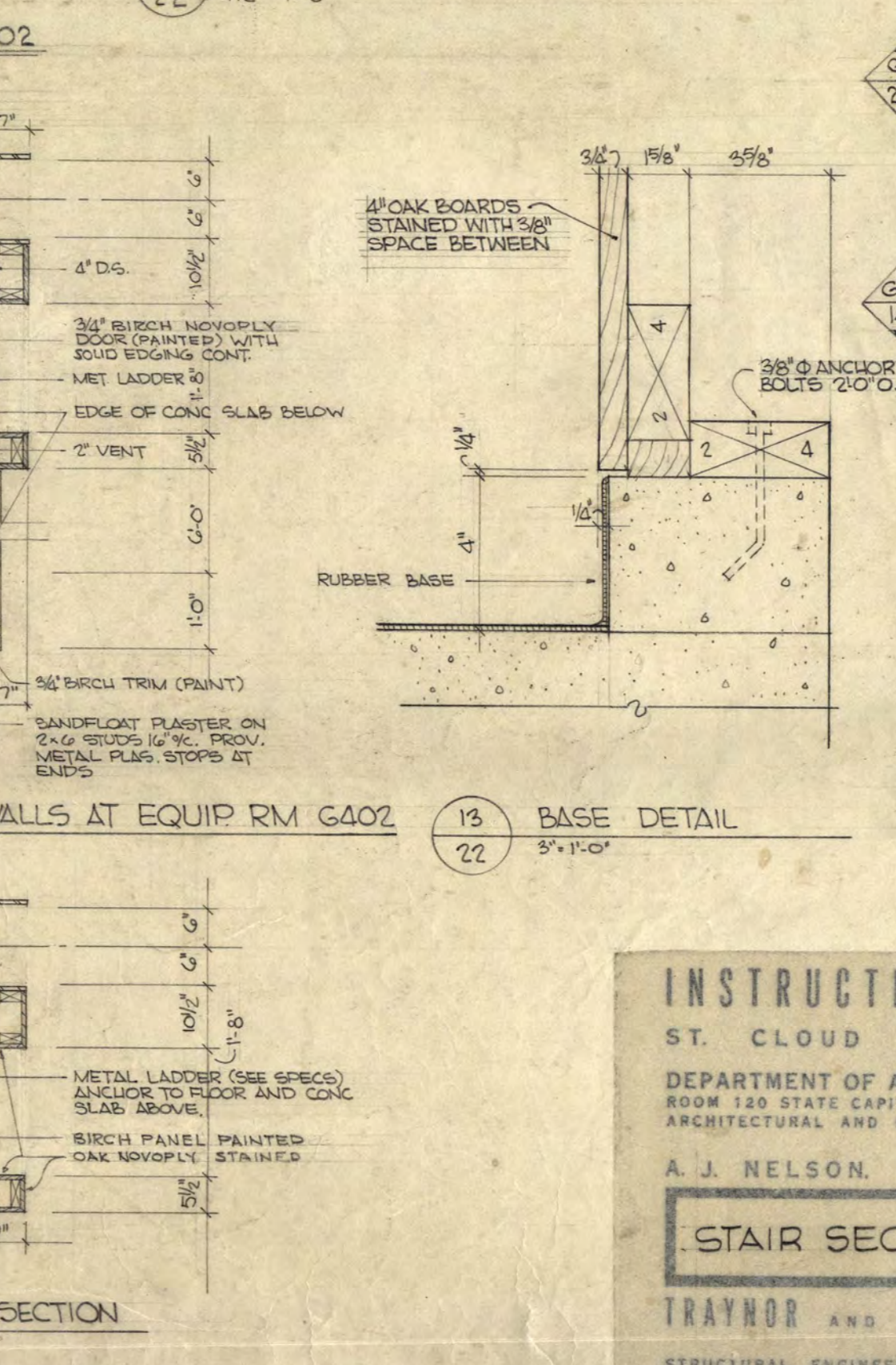
PLAS. WALL DETAIL  
1/2" x 1'-0"



PLAN OF STAIR 'B' AT MAIN FLOOR STAIR 'A' REVERSED  
1/4" = 1'-0"



ELEV OF WEST WALL OF RM. G-402 AS SEEN FROM LOBBY G-303



ENLARGED PLAN SECTION

23

**INSTRUCTIONAL BUILDING FOR PHYSICAL EDUCATION**  
ST. CLOUD STATE COLLEGE ST. CLOUD, MINNESOTA

DEPARTMENT OF ADMINISTRATION STATE OF MINNESOTA  
ROOM 120 STATE CAPITOL BUILDING ST. PAUL, MINNESOTA

A. J. NELSON, STATE ARCHITECT

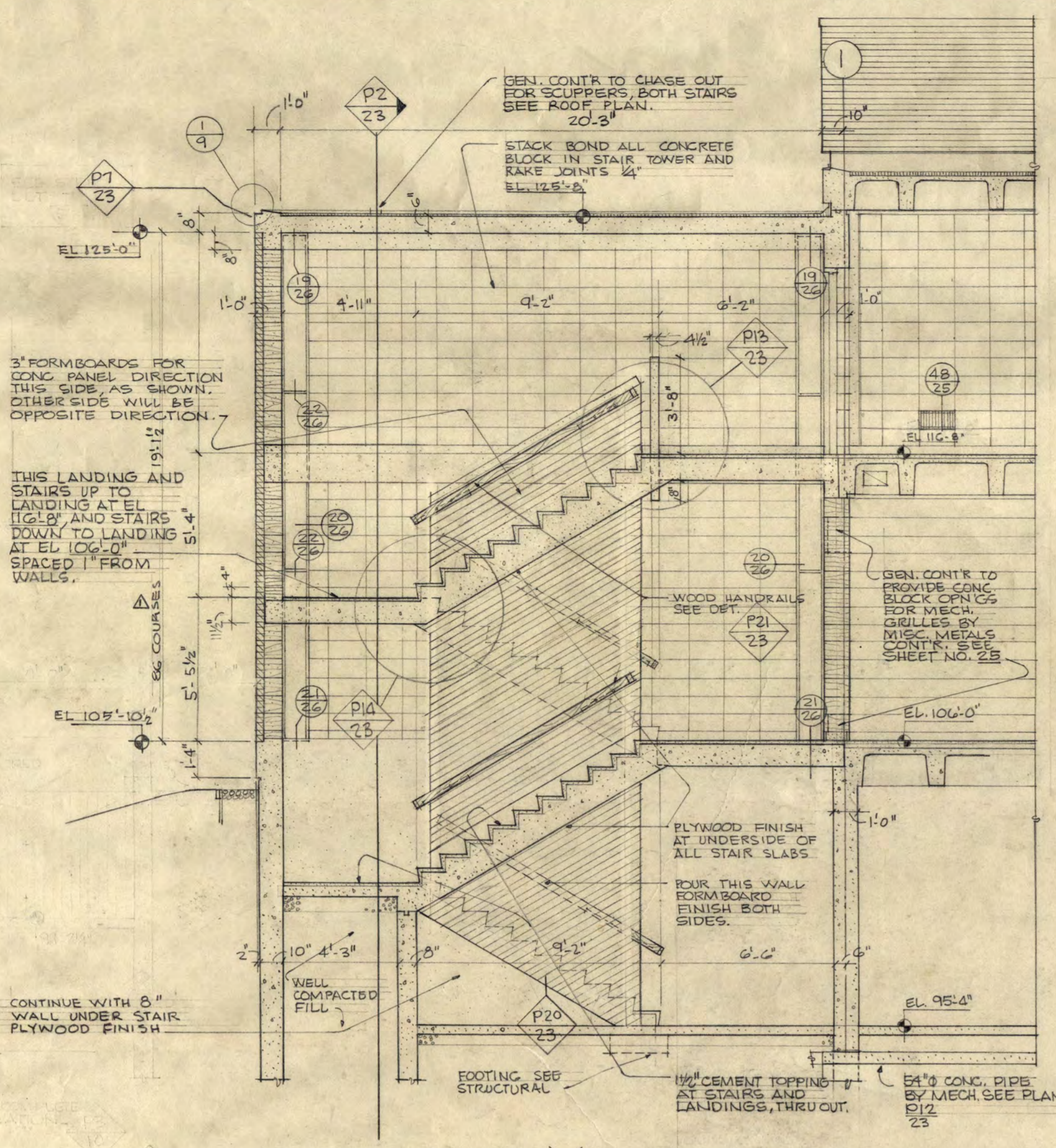
**STAIR SECTIONS.**

TRAYNOR AND HERMANSON ARCHITECTS ST. CLOUD

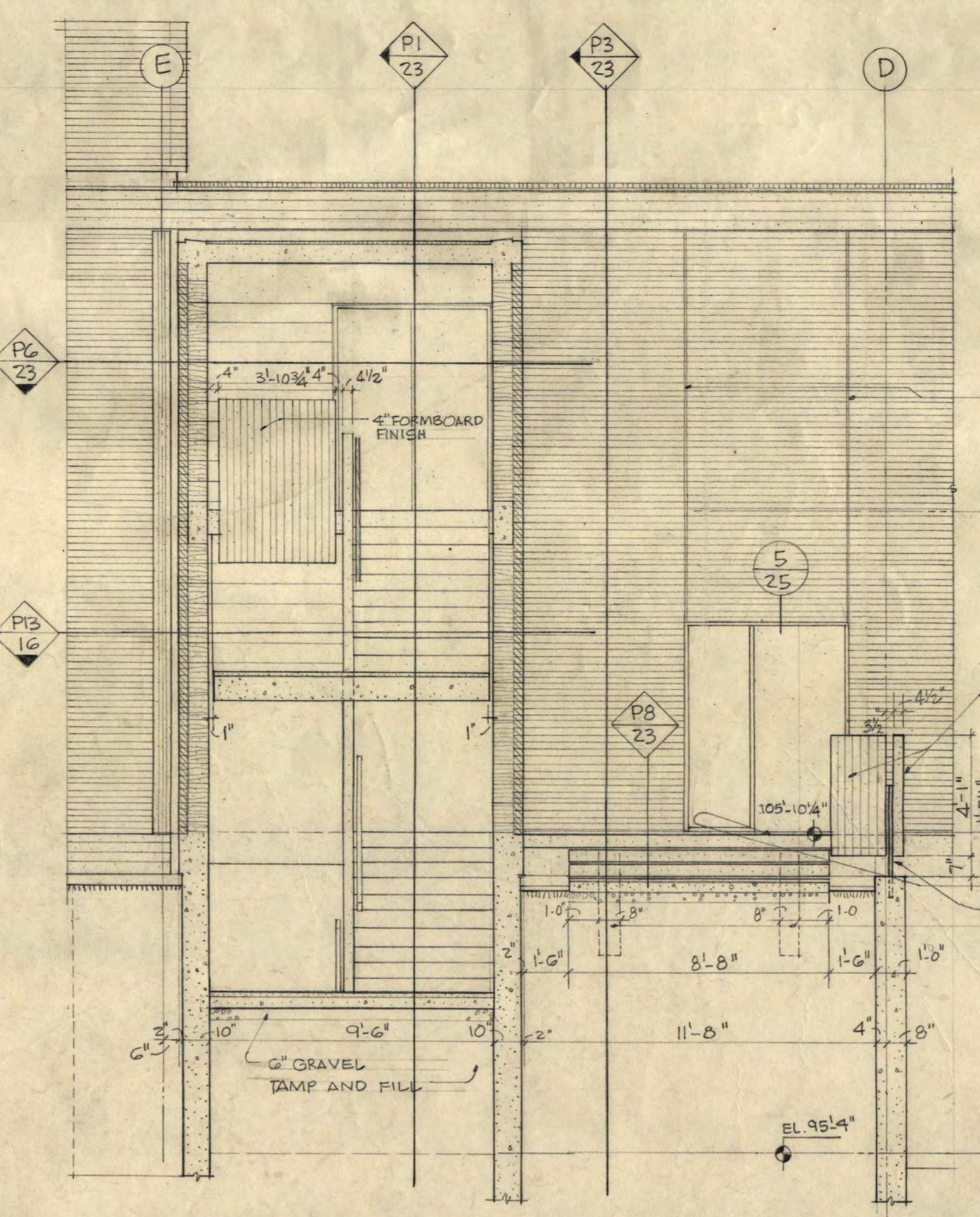
APPROVED BY PRESIDENT'S CLOUD STATE COLLEGE  
APPROVED BY STATE COLLEGE BOARD  
APPROVED BY COMMISSIONER OF ADMINISTRATION AND ARCHITECTURE

DATE 1-17-63 REV. ONE  
DRAWN L.W. RAS 170 AS BUILT.

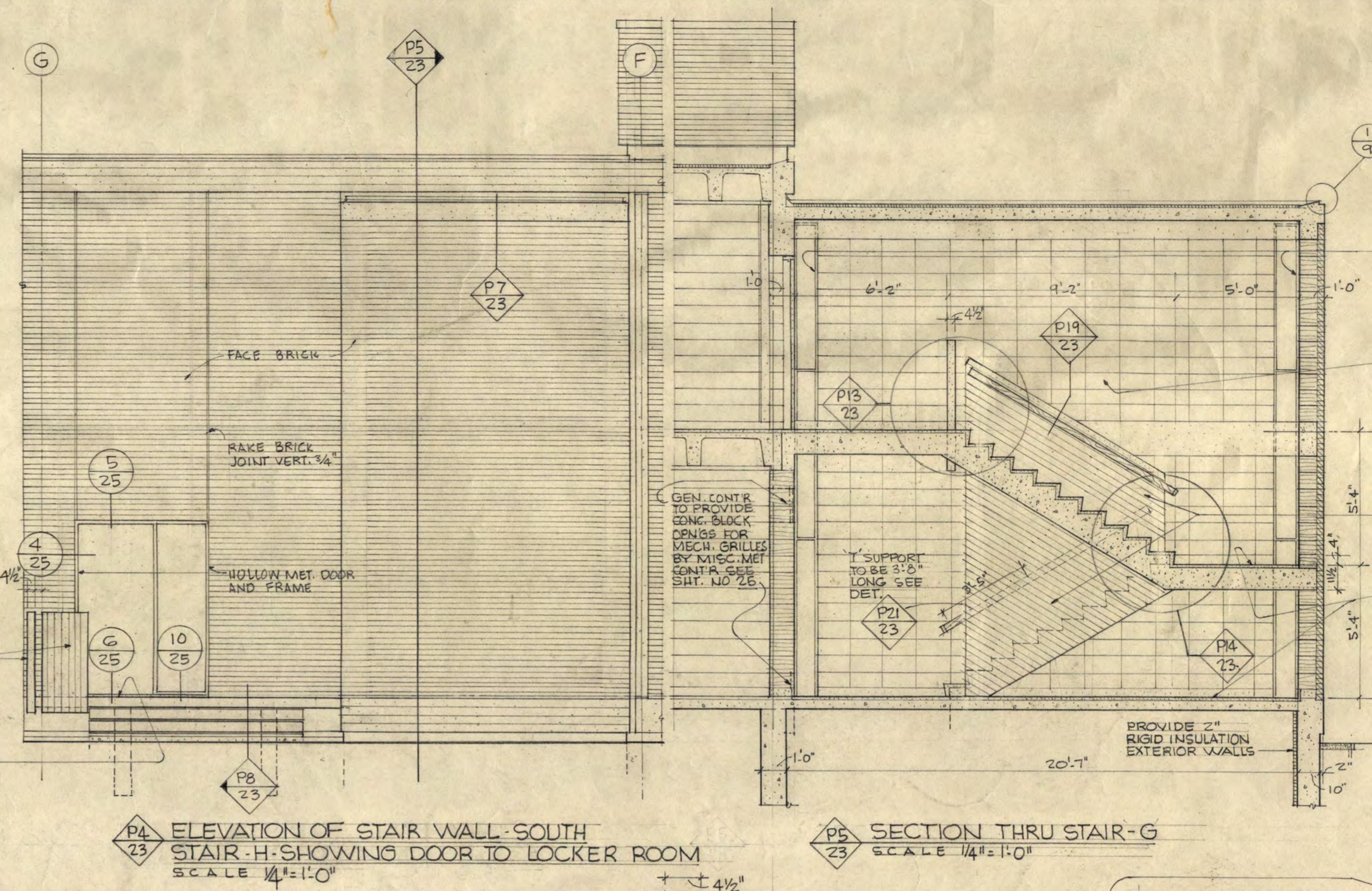
STATE PROJECT NUMBER  
**22**  
OF 33  
3425



SECTION THRU STAIR H' SCALE 1/4" = 1'-0"

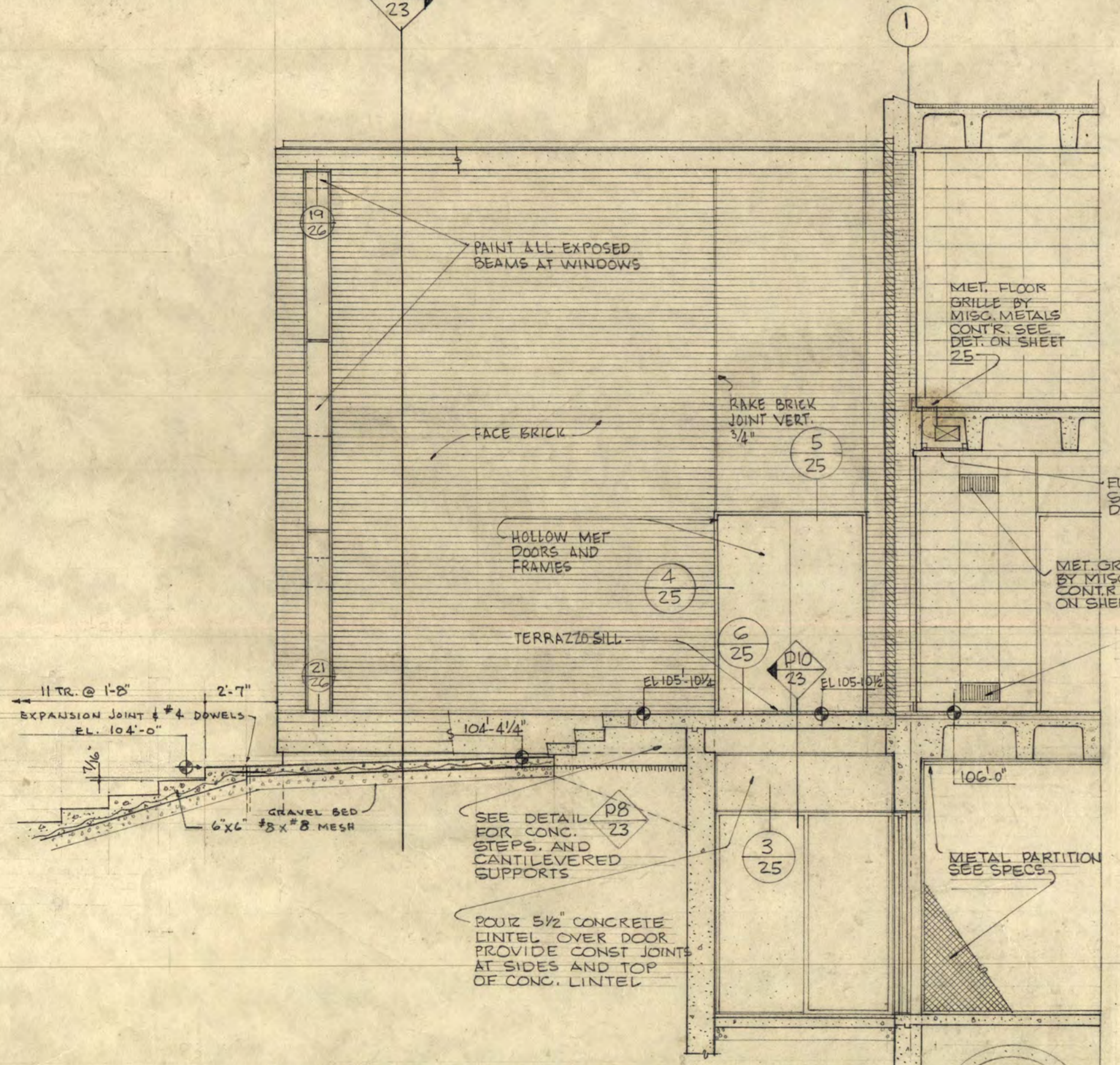


SECTION THRU STAIR-H SCALE 1/4" = 1'-0"

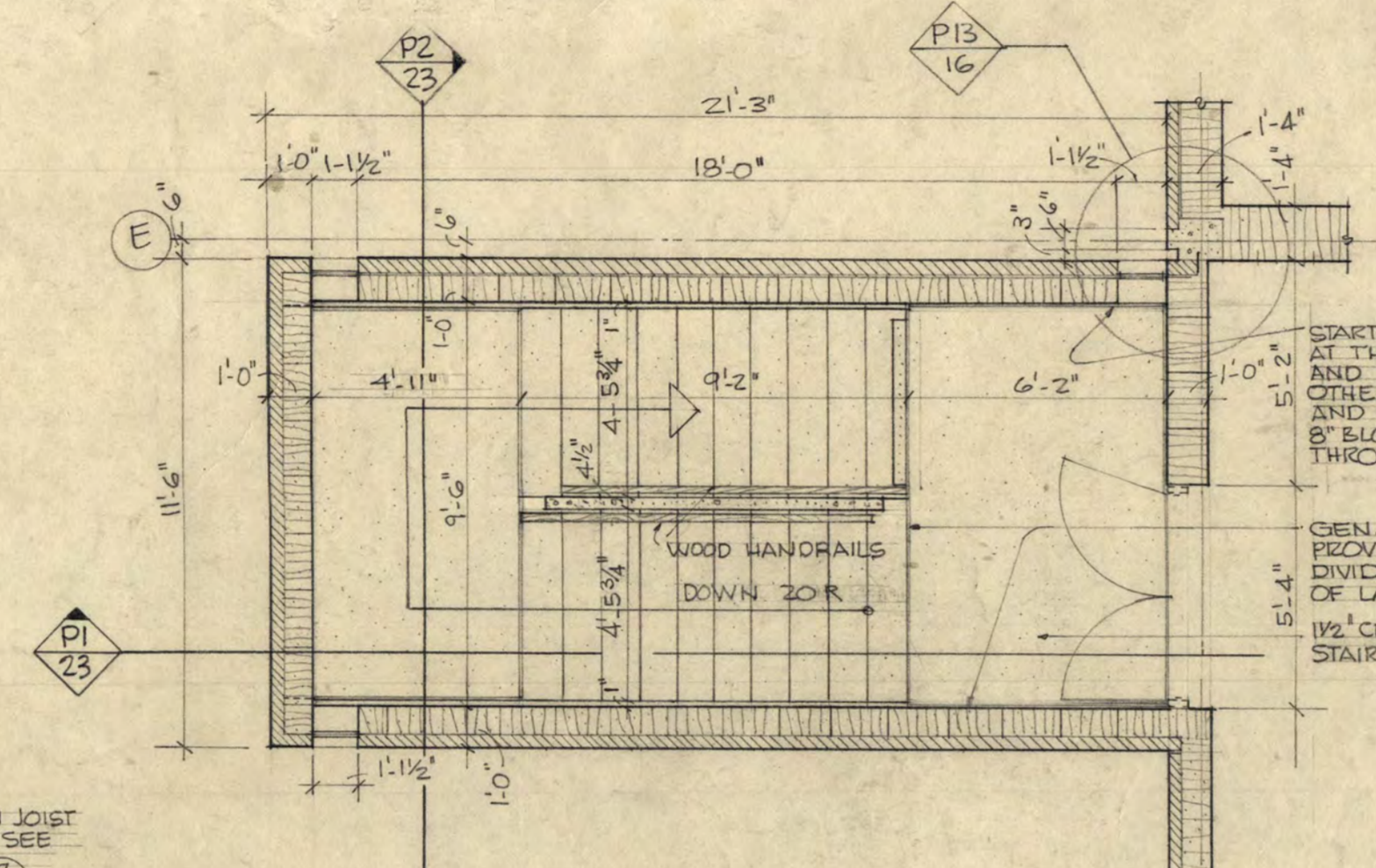


ELEVATION OF STAIR WALL-SOUTH SCALE 1/4" = 1'-0"

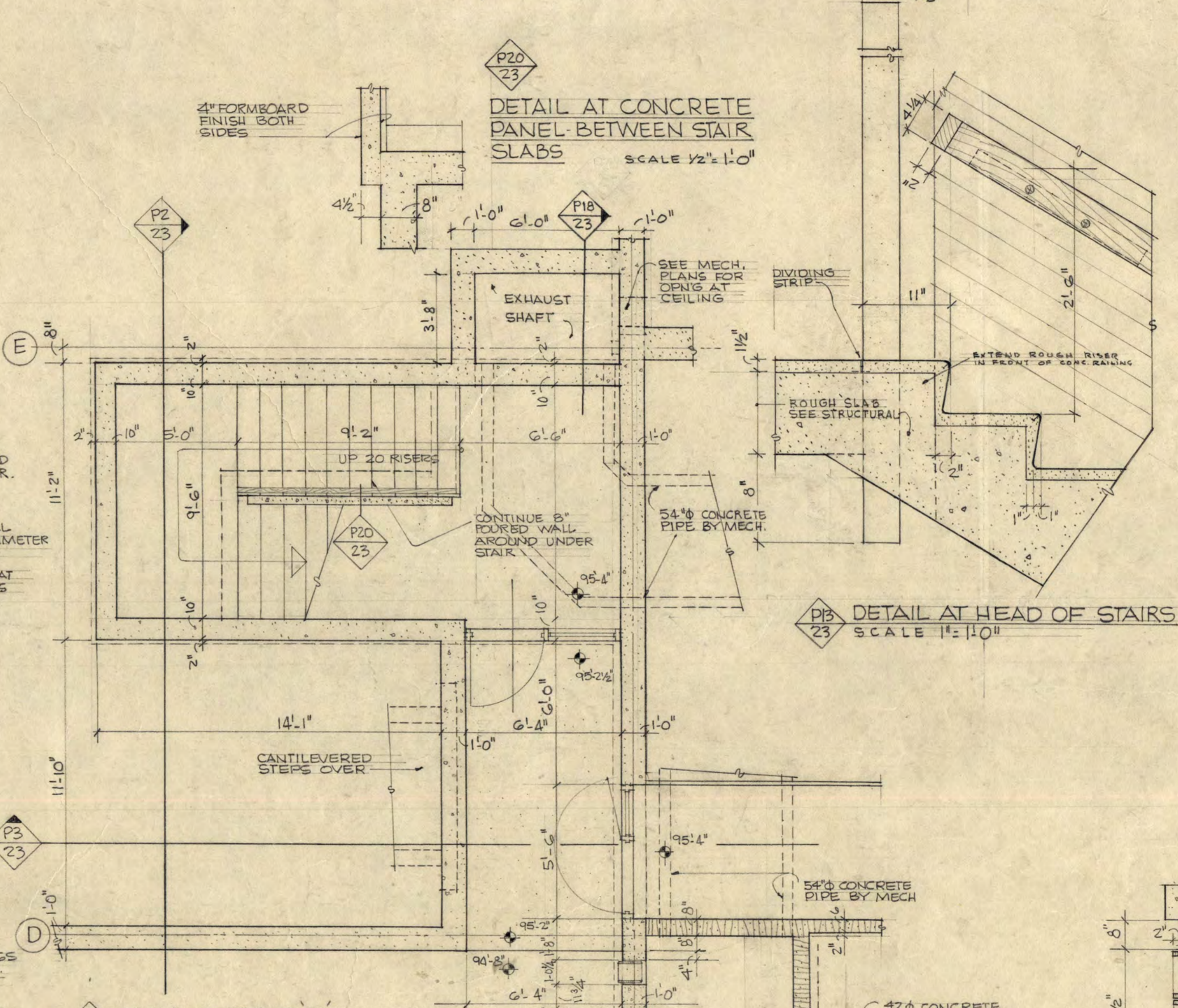
SECTION THRU STAIR-G SCALE 1/4" = 1'-0"



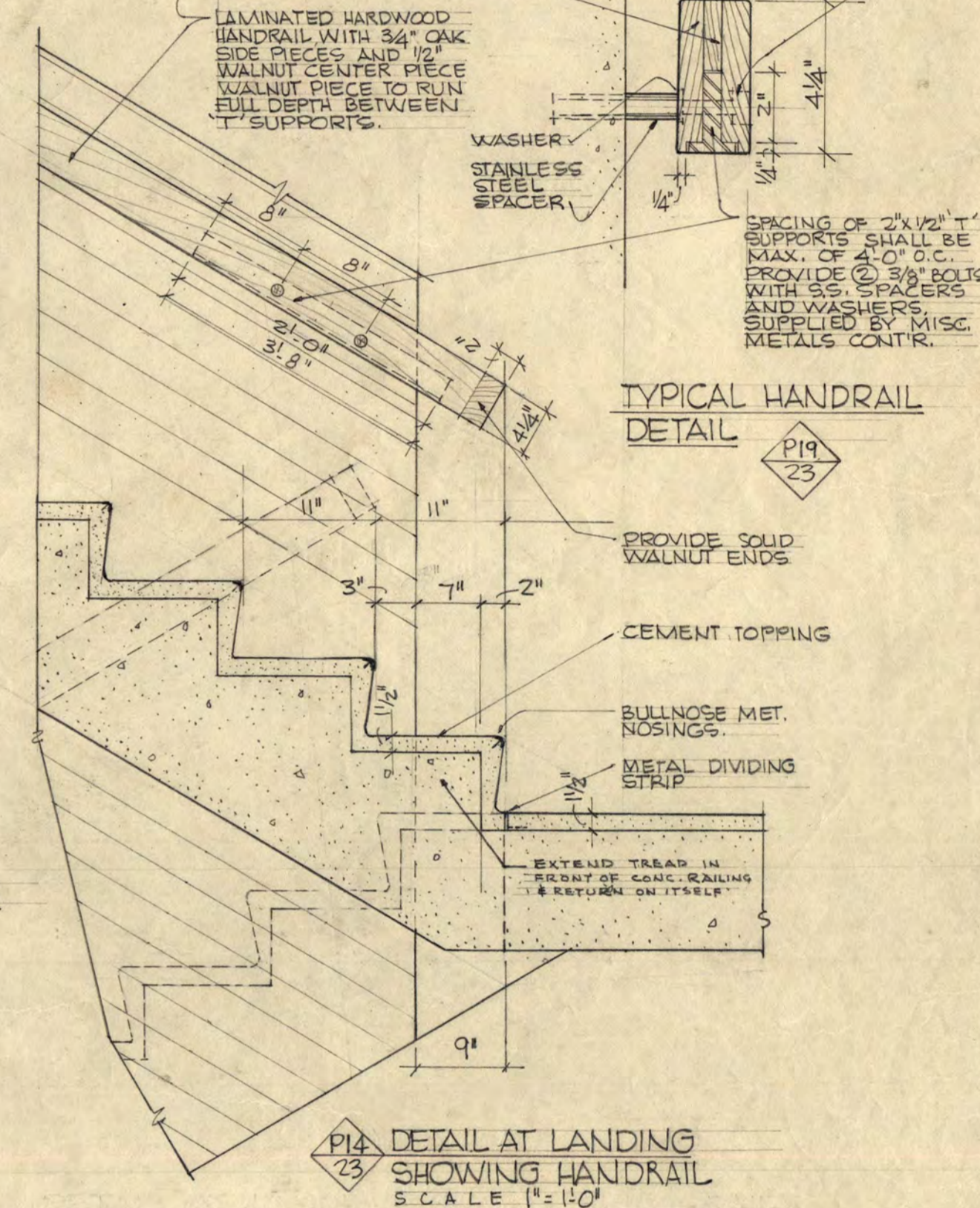
SECTION THRU CANTILEVERED STEPS PLATFORM-EAST ELEVATION SCALE 1/4" = 1'-0"



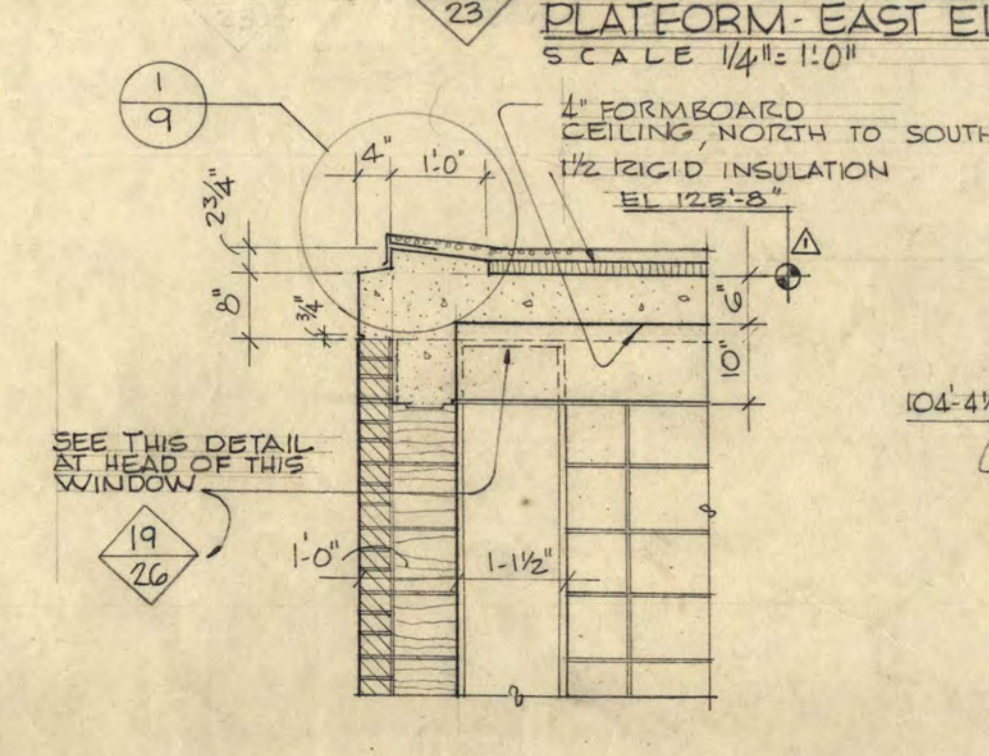
PLAN OF STAIR H' EL. 110'-8"



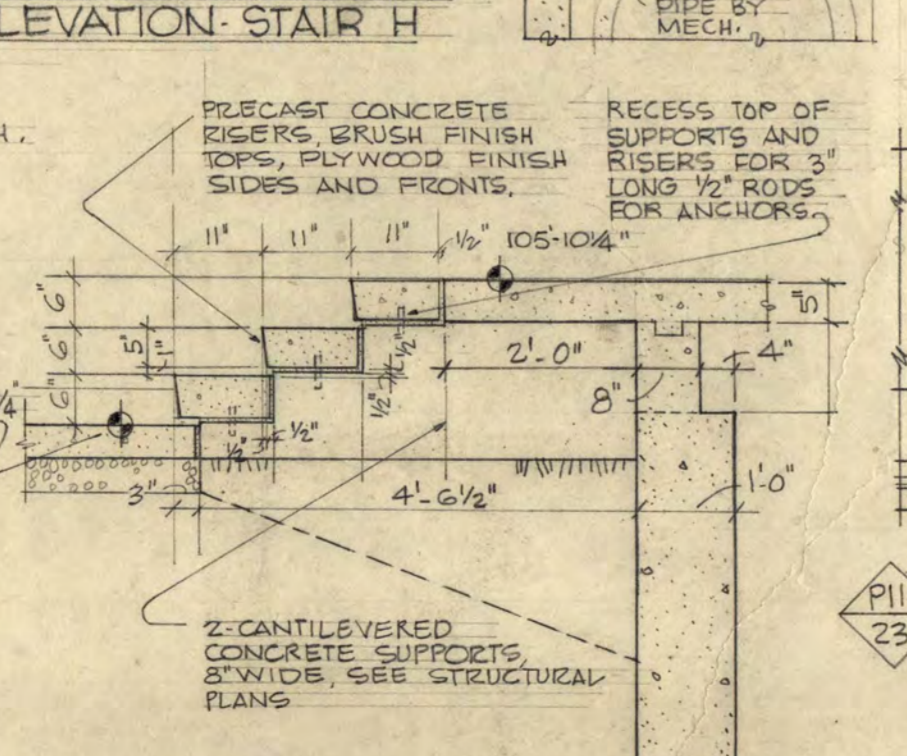
PLAN AT STAIR H' SCALE 1/4" = 1'-0"



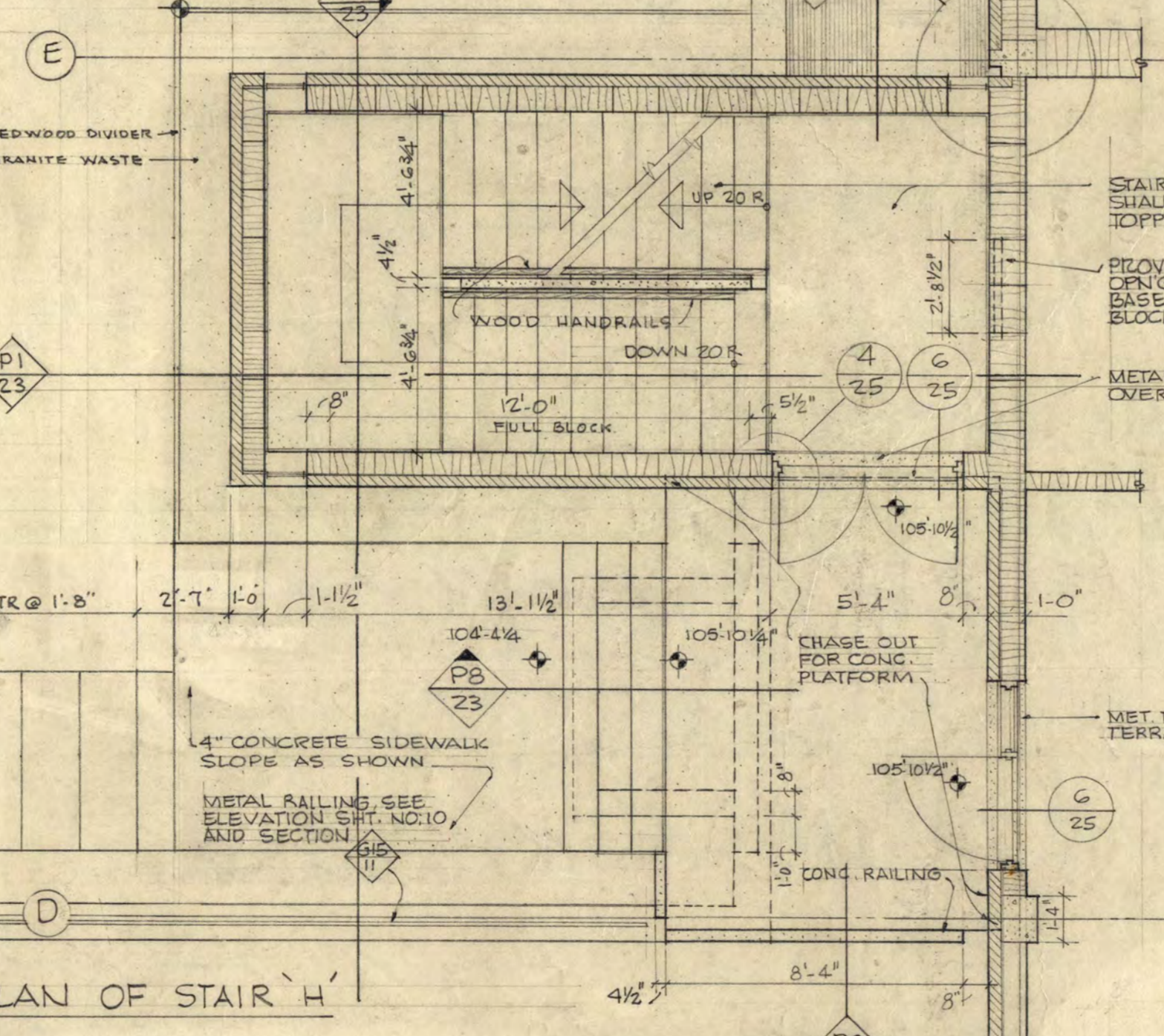
TYPICAL HANDRAIL DETAIL SCALE 1" = 1'-0"



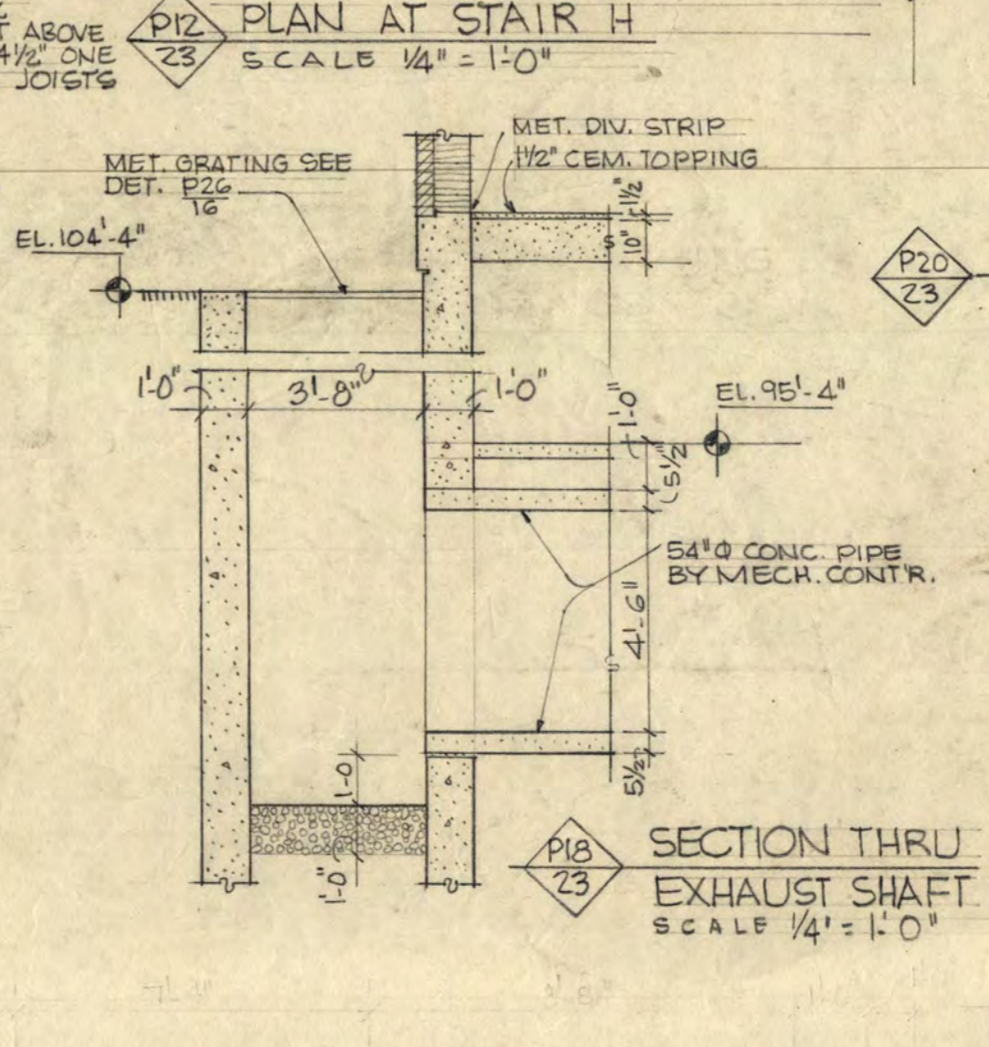
SECTION THRU CONCRETE RAILING SCALE 1/2" = 1'-0"



SECTION-HEAD THRU DOOR SCALE 1/2" = 1'-0"

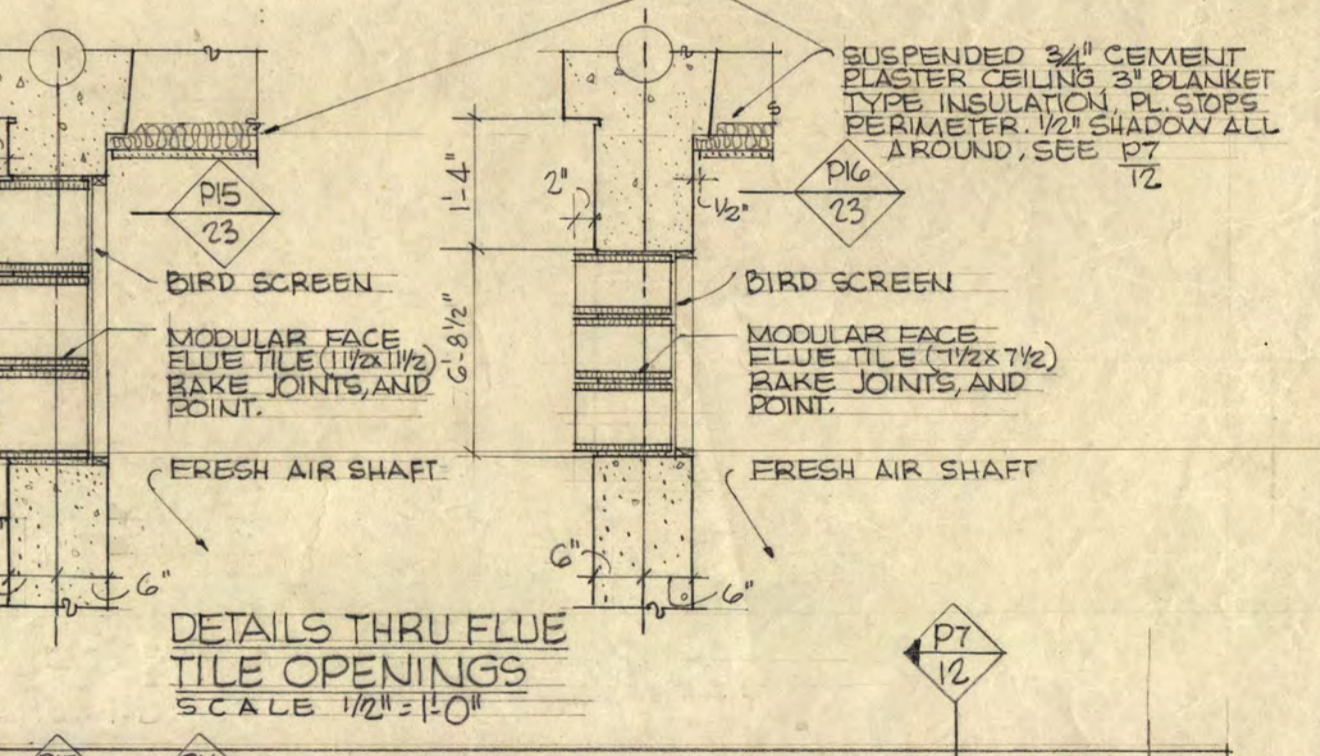


PLAN OF STAIR H' SCALE 1/4" = 1'-0"

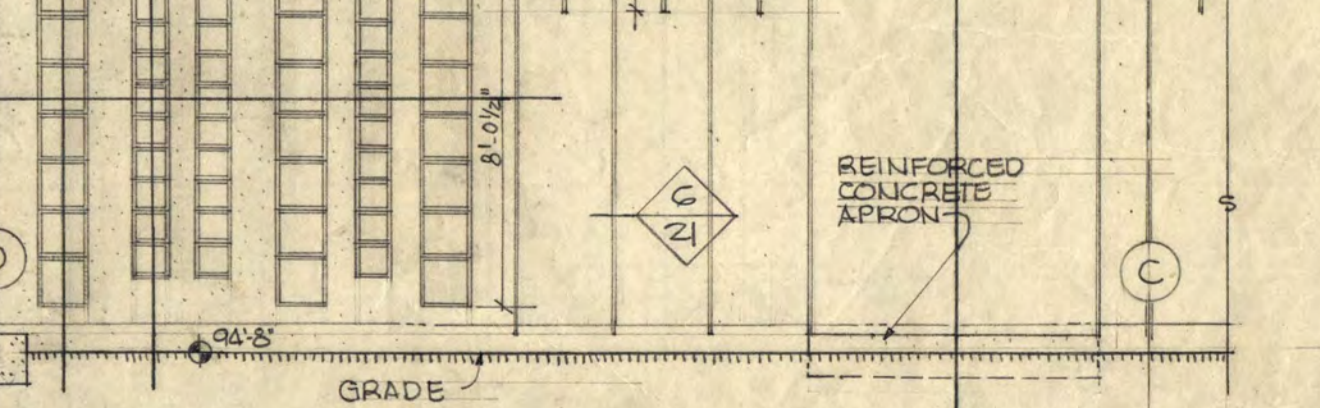


SECTION THRU EXHAUST SHAFT SCALE 1/4" = 1'-0"

SECTION THRU FRESH AIR SHAFT SCALE 1/4" = 1'-0"



DETAILS THRU FLUE TILE OPENINGS SCALE 1/2" = 1'-0"



ELEVATION OF FRESH AIR OPENINGS SCALE 1/4" = 1'-0"

**24**

**INSTRUCTIONAL BUILDING FOR PHYSICAL EDUCATION**  
ST. CLOUD STATE COLLEGE ST. CLOUD, MINNESOTA

DEPARTMENT OF ADMINISTRATION ROOM 122 STATE CAPITOL BUILDING ARCHITECTURAL AND ENGINEERING DIVISION STATE OF MINNESOTA ST. PAUL, MINNESOTA

A. J. NELSON STATE ARCHITECT APPROVED BY PERGENT BY ST. CLOUD STATE COLLEGE

**STAIR SECTIONS** APPROVED BY STATE COLLEGE BOARD

TRAYNOR AND HERMANSON ARCHITECTS ST. CLOUD DATE 1-17-25 DRAWN RAS FVT REVISIONS AS BUILT- 3 4 2 5

**23**

