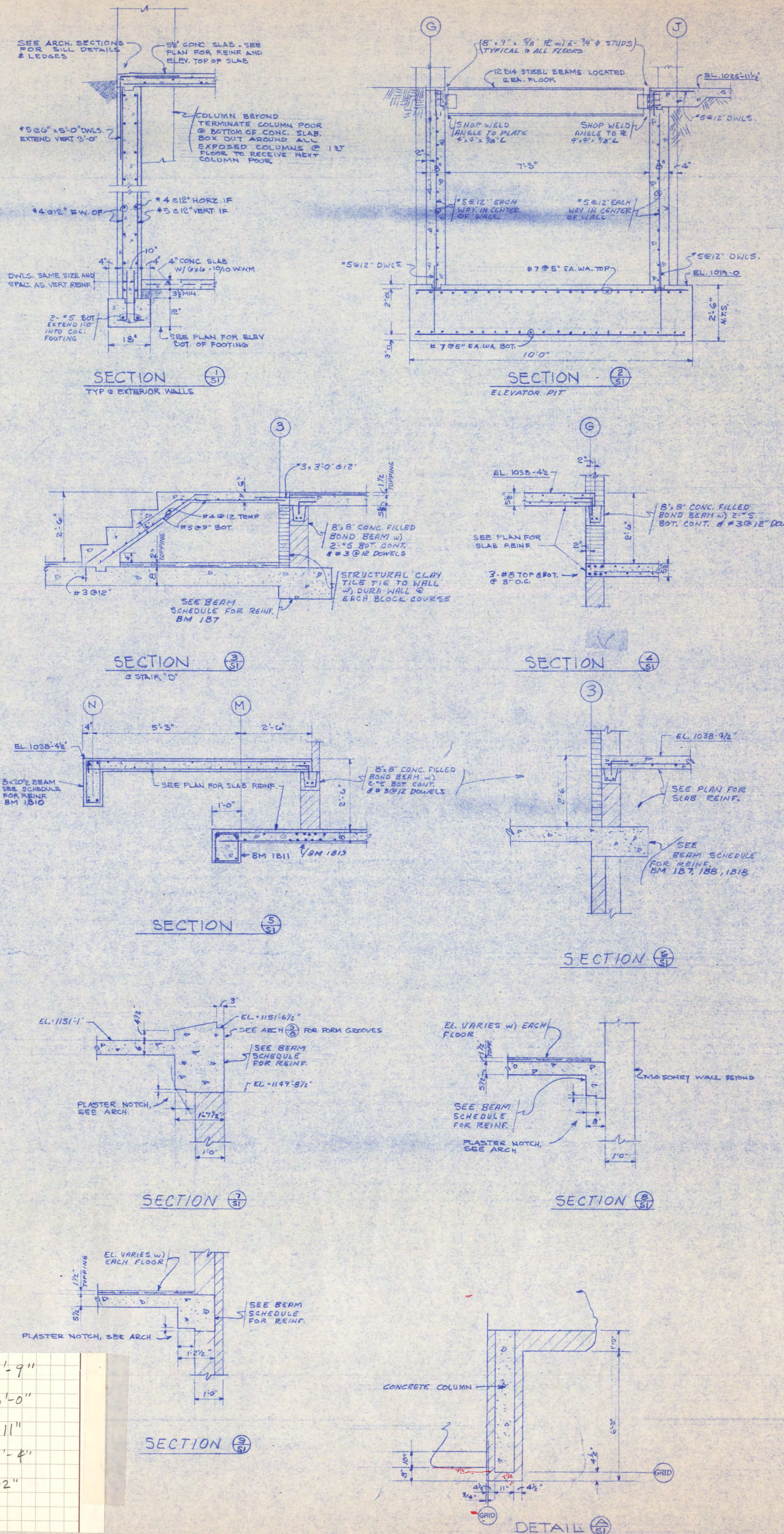


**FOOTING AND FOUNDATION PLAN**

- 4" CONCRETE SLAB ON GRADE W/ #6 @ 18" O.C. W/ WELDED WIRE MESH PAUSE IN CHEEK BOARD PATTERN W/ MAXIMUM AREA OF 1000 SQUARE FEET
- TOP OF CONCRETE SLAB ELEVATION = 1025'-11 1/2"
- BOTTOM OF WALK TYPING ELEVATION = 1023'-4" U.N.
- NO CONCRETE SLAB IN CRAWL SPACE - SEE ARCH FOR EXTENT.
- SEE FOOTING SCHEDULE FOR SIZE & REINFORCING OF FOOTINGS
- SEE COLUMN SCHEDULE FOR SIZE & REINFORCING OF COLUMNS
- SEE STRUCTURAL NOTES FOR FOUNDATION AND FOOTING NOTES.
- ALL EXTERIOR WALL FOOTINGS ARE 12" DEEP X 18" WIDE W/ 2" X 5 BOT EXTENDED 10" INTO COL. FTG.

*FOOTING EL'S. (w/ BLUE PENCIL) ARE BOT. OF FOOTING*

R-5/2	7'-0" x 13'-0" x 2'-9"
R-5/3	10'-0" x 10'-0" x 3'-0"
R-5	6'-0" x 6'-0" x 1'-11"
P-5	7'-6" x 7'-6" x 2'-4"
P-7	7'-0" x 7'-0" x 2'-2"
R-1	1'-11" DEEP



**DESIGN DATA:**  
 FC = COMPRESSIVE CONCRETE STRESS IN 28 DAYS = 4000 PSI EXCEPT AS NOTED FOR COLUMNS = 5000 PSI FOR COLUMNS WHERE NOTED ON COL. SCHEDULE  
 FY = 40000 PSI (A15) N.E. REINF. BARS EXCEPT AS NOTED FOR COLUMNS  
 FY = 60000 PSI (A432) N.E. VERTICAL BARS AND DOWELS IN COLUMNS  
 FY = 36000 PSI (A36) STRUCTURAL STEEL

**DESIGN LIVE LOADS:**  
 ROOF = 40 PSF  
 MECHANICAL FL. = 100 PSF  
 LIVING UNITS = 40 PSF + 40 PSF PARTITION  
 PUBLIC MEAL = 100 PSF

**SOIL BEARING DESIGN VALUE = 8000 PSF**

**DESIGN CODES:**  
 CONCRETE - A.C.I. BUILDING CODE  
 STRUCTURAL STEEL - A.I.S.C. SPECIFICATIONS  
 STEEL JOISTS - S.J.I. SPEC'S (FY = 50000 PSI)  
 UNIFORM BLDG CODE - ALL CODES TO BE LATEST EDITION.

**FOUNDATION NOTES:**  
 SUPPORT ALL COLUMNS AND WALLS ON DENSE LIGHT BROWN CORNE LOAMY SAND. ELEVATIONS SHOWN EL. 1000' ON PLANS ARE ASSUMED. BOTTOM OF FOOTING ELEVATIONS ARE TO BE VERIFIED IN FIELD. ALL FOOTINGS ARE TO BEAR ON NATURAL UNDISTURBED SOIL. OVEREXCAVATIONS TO BE FILLED W/ MASS CONCRETE.

**FOOTINGS:**  
 WALL FOOTINGS ARE CONTINUOUS POURED CONCRETE FOOTINGS PLICE CONTINUOUS BARS 3' CLEAR BOTTOM AND SIDES, LAP IN INTERSECTIONS. EXTEND WALL FOOTING BARS 18" INTO COL. FOOTINGS. UNLESS OTHERWISE NOTED, WALL FOOTINGS ARE CENTERED ON WALLS AND COLUMN FOOTINGS ARE CENTERED ON COLUMNS. CONTRACTOR MAY USE DEEPER FOOTINGS THAN INDICATED ON FOOTING SCHEDULE TO FACILITATE EXCAVATION.

**COLUMN DOWELS:**  
 ALL COLUMN REINF. SHALL BE DOWELED INTO THE FOOTINGS TO DEVELOP THE FULL STRENGTH OF THE BARS.

**POURED CONCRETE WALLS:**  
 UNLESS OTHERWISE NOTED, USE #4 @ 16" CONTINUOUS, LAP 20 DIA. EACH WAY, 1' CLEAR INSIDE FACE. SEE SECTIONS AND PLAN FOR EXCEPTIONS. USE #4 1/2" CORNER BARS (16 BAR LG) - 2' CLEAR OUTSIDE FACE WITH 4 #4 VERT. BARS. EXTEND VERT. REINF. TO WITHIN 2' CL. TOP OF WALL.

**CONCRETE COVER ON REINFORCING:**  
 FOOTINGS: 3" CL. BOTTOM AND SIDES  
 WALLS: 1 1/2" CL. OF AND 1" CL. IN  
 COLUMNS AND BEAMS: 1 1/2" CL. INTERIOR AND 2" CL. EXTERIOR  
 SLABS AND JOISTS: 1 1/2" CL.  
 SEE SECTIONS FOR OTHER  
 COVER MEASURED FROM INNERMOST POINT OF GROOVE OR DEEP TO TIE.

**BAR SUPPORTS:**  
 PROVIDE BOLSTER BAR AND CHAIR SUPPORTS AS REQUIRED TO SUPPORT ALL REINFORCING WITHOUT EXCESSIVE SAG. DETAIL AND PLACE ALL REINFORCING IN ACCORDANCE WITH THE LATEST EDITION OF A.C.I. MANUAL OR STANDARD PRACTICE FOR DETAILING REINFORCED CONCRETE STRUCTURES. USE PLASTIC TIEPED CHAIRS AND SUPPORTS AT ALL EXPOSED CONCRETE.

**CONCRETE SLABS ON GRADE:**  
 THICKEN SLABS ON GRADE BELOW ALL NON-BEARING WALLS OF OVER 4" IN THICKNESS TO 1" WIDE AND 2" DEEP REINF. WITH 2 #4 CONT. BOTTOM. UNLESS OTHERWISE NOTED, PROVIDE 4" CONCRETE SLAB ON GRADE REINFORCED WITH #6 @ 18" O.C. MECH. DOWEL ALL EXTERIOR PLATFORM SLABS TO BASEMENT WALLS W/ #3 X 4/16 F. FIELD BEND @ 2' O.C. SEE ARCH. DRWG'S.

**OPENINGS:**  
 VERIFY SIZE AND LOCATION OF ALL OPENINGS WITH MECHANICAL AND ARCHITECTURAL DRAWINGS. PROVIDE 2 #5 DIAGONAL AT EACH CORNER IN ALL REINFORCED CONCRETE SLABS AND WALLS WHERE NOT SHOWN OTHERWISE.

**DEPRESSED SLABS:**  
 DEPRESSED SLABS AS REQUIRED FOR MATS, TOPPING, TILE, ETC. SEE ARCH AND MECH DRAWINGS AND ROOM FINISH SCHEDULE.

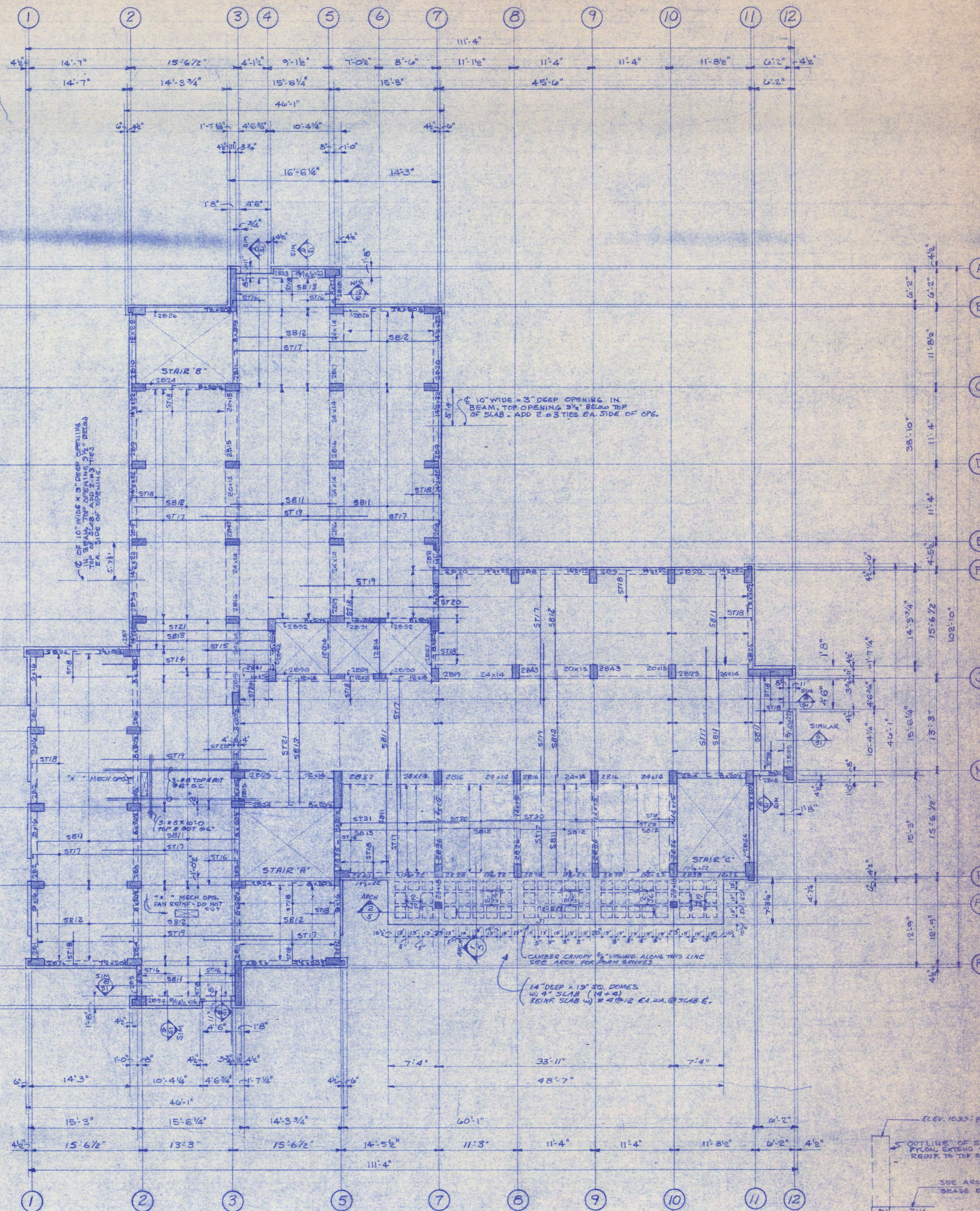
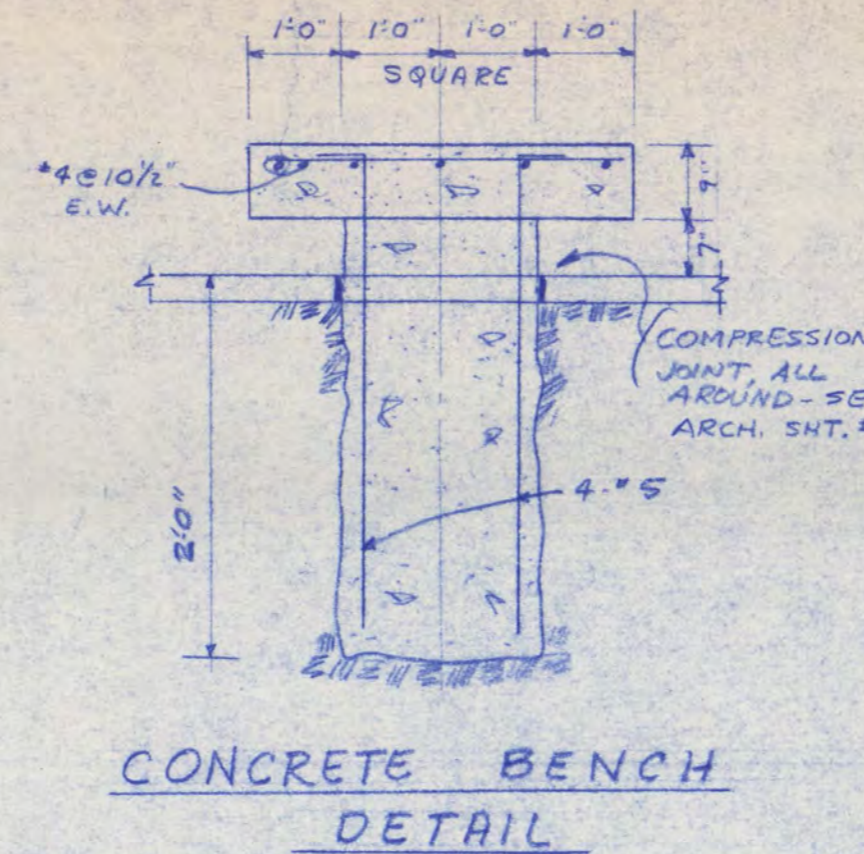
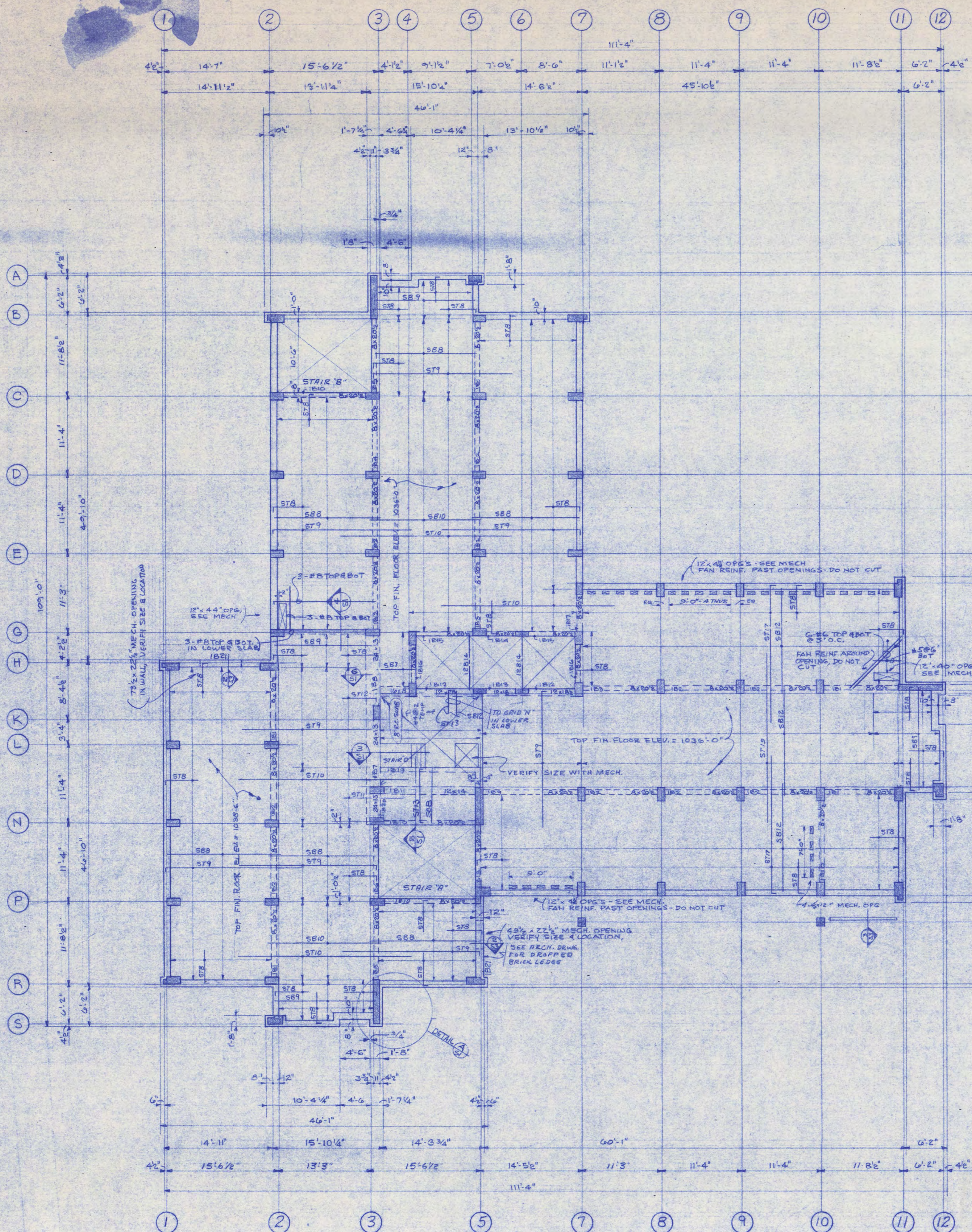
**RELIEVING ANGLES:**  
 PROVIDE 3/8" x 3/8" x 1/2" CONTINUOUS @ 24" O.C. 2" 107" & 127" FLOORS. SECURE TO CONCRETE BEAMS W/ 1/2" DIA. 2" x 24" ANCHOR BOLTS @ 3'-0" O.C. SEE ARCH. DRWG'S.

**STEP FOOTING:**

**LITTLE ANGLES:**  
 SEE MECH. AND ARCH. DRAWINGS FOR OPENINGS AND RECESSES. UNLESS OTHERWISE NOTED, PROVIDE 1:4 x 3/8" x 3/4" C. FOR EACH NOMINAL 4" OF WALL THICKNESS FOR MASONRY OPENINGS TO 4" WIDE MAXIMUM. BEAR 6" ONTO MASONRY, FILL MASONRY BELOW BEARING W/ CONC.

**SLAB OPENINGS:**  
 OPENINGS IN SLAB FOR MECHANICAL & ELECTRICAL CONTRACTOR LESS THAN 6'-0" ARE NOT SHOWN ON STRUCTURAL PLANS. SLEEVE AS REQUIRED, ALLOWING SPACE BETWEEN SLEEVES OF SAME DIMENSION AS SLEEVE. PAN REINF. PAST OPENINGS DO NOT CUT.





FIRST FLOOR FRAMING PLAN

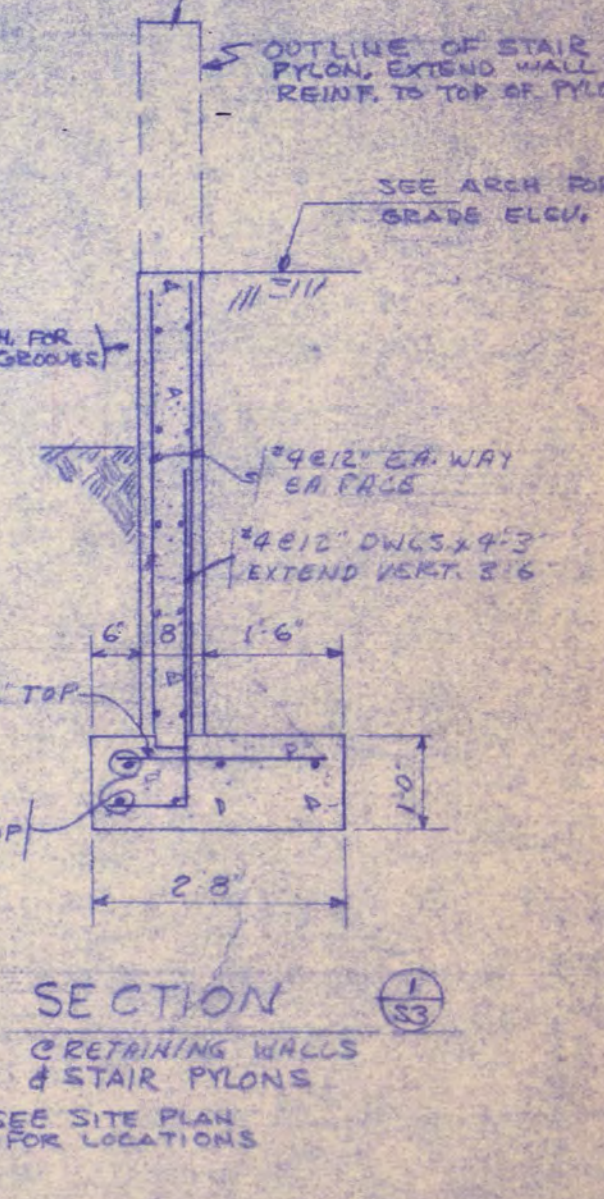
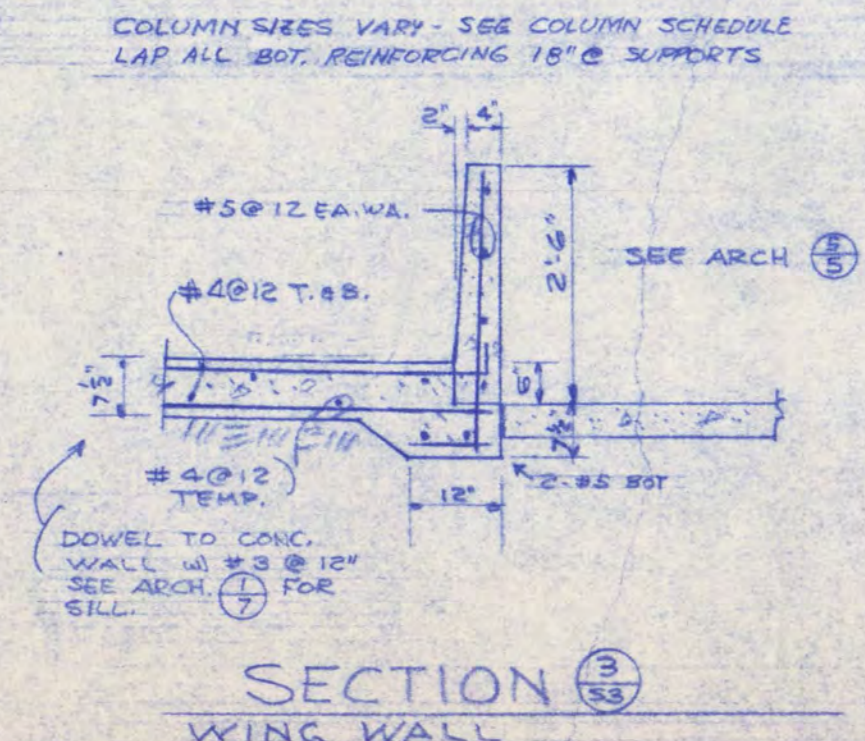
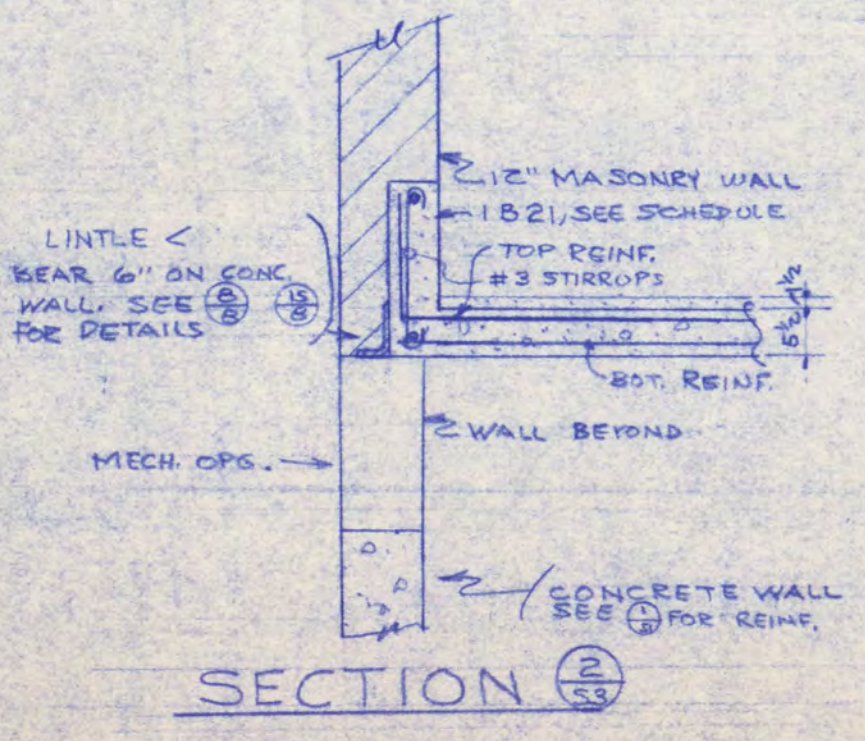
5" CONCRETE SLAB W/ 4 @ 16" TEMP. REIN. TOP ROUGH SLAB ELEVATIONS = 1038'-4 1/2" W/ 1" CONC. TOP & 1035'-10" ± CONC. TOP. NOTE: REIN. ALL TOPPING W/ 6 @ 16" W.M. LAP ALL BOT. REINFORCING 18" @ SUPPORTS.

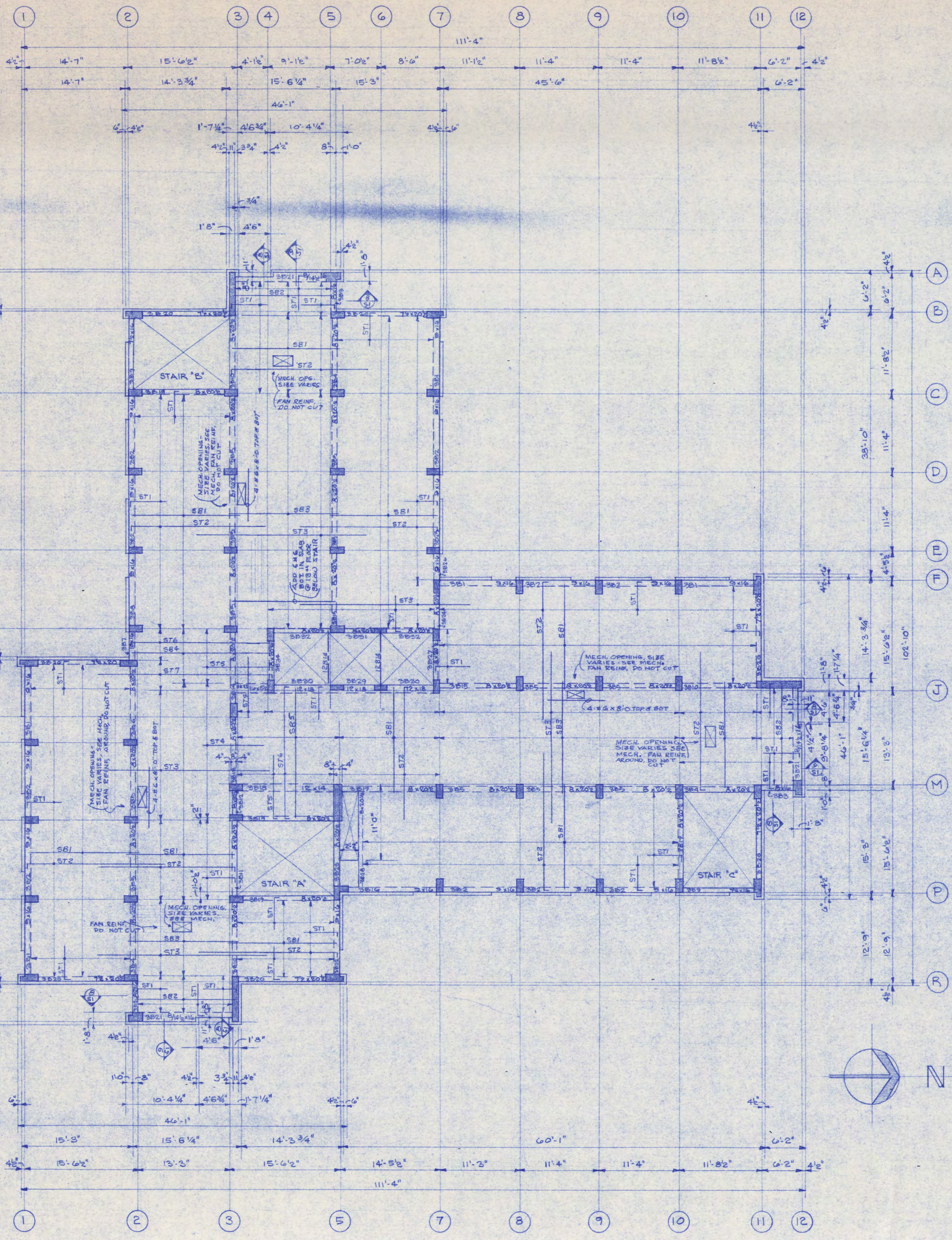
CONCRETE SLAB SCHEDULE				
MARK	REINFORCING	TOP	MARK	REINFORCING
ST8	"5.5'0" x 11'8.5"	ST8	"5.6'8"	
ST9	"5.2'0" x 11'8.5"	ST9	"5.6'10"	
ST10	"5.2'0" x 11'8.5"	ST10	"5.6'4"	
ST11	"5.2'0" x 11'8.5"	ST11	"5.6'8"	
ST12	"5.5'0" x 11'8.5"	ST12	"5.6'10"	
ST13	"5.5'0" x 11'8.5"	ST13	"5.6'8"	
ST14	"6.2'0" x 11'8.5"	ST14	"5.6'8"	
ST15	"6.2'0" x 11'8.5"	ST15	"5.6'8"	
ST16	"6.2'0" x 11'8.5"	ST16	"5.6'8"	
ST17	"6.2'0" x 11'8.5"	ST17	"5.6'8"	
ST18	"6.2'0" x 11'8.5"	ST18	"5.6'8"	
ST19	"6.2'0" x 11'8.5"	ST19	"5.6'8"	
ST20	"6.2'0" x 11'8.5"	ST20	"5.6'8"	
ST21	"6.2'0" x 11'8.5"	ST21	"5.6'8"	
ST22	"6.2'0" x 11'8.5"	ST22	"5.6'8"	
ST23	"6.2'0" x 11'8.5"	ST23	"5.6'8"	
ST24	"6.2'0" x 11'8.5"	ST24	"5.6'8"	
ST25	"6.2'0" x 11'8.5"	ST25	"5.6'8"	
ST26	"6.2'0" x 11'8.5"	ST26	"5.6'8"	
ST27	"6.2'0" x 11'8.5"	ST27	"5.6'8"	
ST28	"6.2'0" x 11'8.5"	ST28	"5.6'8"	
ST29	"6.2'0" x 11'8.5"	ST29	"5.6'8"	
ST30	"6.2'0" x 11'8.5"	ST30	"5.6'8"	

SECOND FLOOR JOIST SCHEDULE SEE ARCH #3					
MARK	SIZE	W	D	EOT. REINF.	TOP REINF.
J1	10 1/2	22	1-#8 CONT.	1-#8 CONT.	
J2	5	14-4	1-#5	1-#5	
J3	5	14-4	1-#5	1-#5	
J4	5	14-4	1-#7	1-#7	
J5	5	14-4	1-#7	1-#7	
J6	5	14-4	1-#8	1-#8	

SECOND FLOOR FRAMING PLAN

5" CONCRETE SLAB W/ 4 @ 16" TEMP. REIN. TOP ROUGH SLAB ELEVATIONS = 1047'-0 1/2" ± 1" CONC. TOPPING W/ 6 @ 16" W.M. LAP ALL BOT. REINFORCING 18" @ SUPPORTS.





**THIRD FLOOR THRU THIRTEENTH FLOOR FRAMING PLANS**

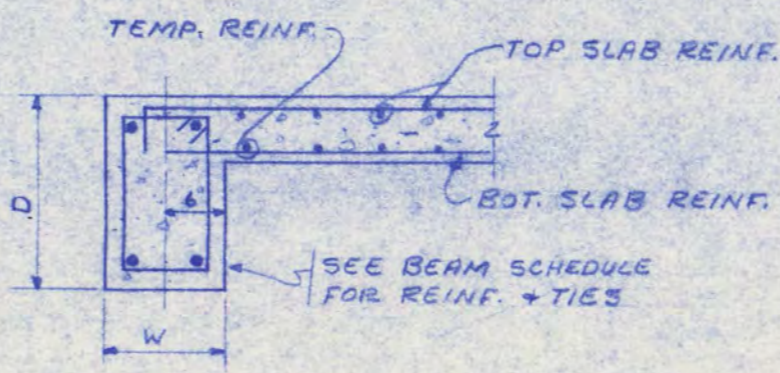
5/8" CONCRETE SLAB w/ #4 @ 10" TEMP. REINF. & 1/2" CONCRETE TOPPING @ 6x6-14" MIN. MIN.  
 ELEVATION TOP SLAB ELEVATION SEE ARCH. SECTION 3  
 COLUMN SIZES VARY, SEE COLUMN SCHEDULE  
 LAP ALL BOTTOM REINFORCING 18" AT SUPPORTS

MARK	REINFORCING	TOP	BOT
ST1	*5.510 * #6 @ 15"		
ST2	*5.2010 * #8 @ 10"		
ST3	*5.2510 @ 10"		
ST4	*5.810 @ 10"		
ST5	*5.810 * #6 @ 10"		
ST6	*5.1110 * #6 @ 10"		
ST7	*5.2110 * #6 @ 10"		
SB1	*5 @ 4"		
SB2	*5 @ 8"		
SB3	*5 @ 10"		
SB4	*5 @ 6"		
SB5	*5 @ 5"		

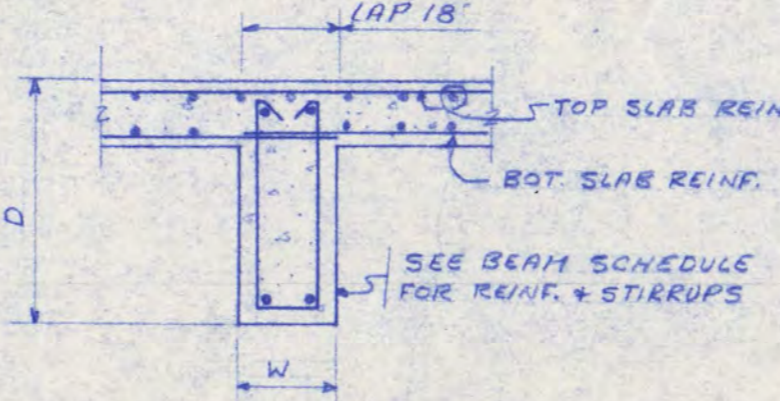
**CONCRETE BEAM SCHEDULE** SEE NOTE BELOW

BEAM MARK	BEAM W	D	NO.	STR.	NO.	SIZE	TOP EARS	STIRRUPS OR TIES	REMARKS
1B1	8	20 1/2	2	*8	2	*7	20	*3 2x3, 6x6, 2x10	S
1B2	8	20 1/2	2	*7	2	*6	20	*3 2x3, 6x6, 2x10	S
1B3	8	20 1/2	2	*8	2	*7	20	*3 2x3, 6x6, 2x10	S
1B4	8	20 1/2	2	*8	2	*7	20	*3 2x3, 6x6, 2x10	S
1B5	8	20 1/2	2	*8	2	*7	20	*3 2x3, 6x6, 2x10	S
1B6	8	20 1/2	2	*8	2	*8	20	*3 2x3, 6x6, 2x10	T
1B7	24	13	4	*7	4	*7	28	*3 6x3, 8x6	T
1B8	24	13	4	*8	4	*7	28	*3 6x3, 8x6	T
1B9	8	20 1/2	2	*9	2	*9	24	*3 2x3, 10x8	S
1B11	12	14	4	*9	4	*9	28	*3 2x3, 10x8, 2x10	S
1B14	8	20 1/2	2	*7	2	*8	6	*3 2x3, 2x10	T
1B17	8	20 1/2	2	*8	2	*8	6	*3 1x3, 2x10	T
1B18	8	20 1/2	2	*8	2	*8	20	*3 2x3, 6x6, 2x10	T
1B19	16	8	4	*8	4	*8			
1B20	24	13	4	*6	4	*7	14	*3 4x3, 8x6	T
1B21	6	16	1	*9	1	*9	20	*3 @ 6" OVER OPENING	S - TURNED UP BEAM
2B1	9	16	2	*7	2	*7	22	*3 2x3, 6x6, 5x12	T
2B2	9	16	2	*6	2	*6	22	*3 2x3, 6x6, 5x12	T
2B3	8	16	2	*7	2	*8	12	*3 3x3, 3x6	T - BOT. REINF. 2'0" INTO 2B4
2B4	8	20 1/2	2	*7	2	*7	20	*3 2x3, 6x6, 2x10	S
2B5	8	20 1/2	2	*7	2	*6	20	*3 2x3, 6x6, 2x10	S
2B6	8	20 1/2	2	*7	2	*6	20	*3 2x3, 6x6, 2x10	S - TOP REINF. THRU 2B7
2B7	9	16	2	*7	2	*6	20	*3 1x3, 2x10	T
2B8	9	16	2	*7	2	*6	22	*3 2x3, 6x6, 3x12	T - TIE REINF. THRU 2B7
2B9	7 1/2	16	2	*8	2	*7	22	*3 4x3, 8x6, 1x10	T
2B10	8	20 1/2	2	*7	2	*6	20	*3 2x3, 6x6, 2x10	S
2B11	8	20 1/2	2	*7	2	*6	20	*3 2x3, 6x6, 2x10	T - TAB REINF. THRU 2B12
2B12	8	20 1/2	2	*6	2	*6	12	*3 2x3, 5x8	S
2B13	8	20 1/2	2	*6	2	*6	20	*3 2x3, 6x6, 2x10	S - TOP REINF. THRU 2B12
2B14	8	20 1/2	2	*8	2	*7	20	*3 2x3, 6x6, 2x10	S
2B15	8	20 1/2	2	*7	2	*6	20	*3 2x3, 6x6, 2x10	S
2B16	9	16	2	*8	2	*8	24	*3 2x3, 10x8	T
2B17	8	20 1/2	2	*8	2	*8	24	*3 2x3, 10x8	S
2B18	12	14	4	*9	4	*9	28	*3 2x3, 10x8, 2x10	S
2B19	8	20 1/2	2	*9	2	*9	16	*3 2x3, 4x8	T
2B20	7 1/2	16	2	*9	2	*9	20	*3 2x3, 6x6, 2x10	T
2B21	8	20 1/2	2	*8	2	*7	20	*3 2x3, 6x6, 2x10	T - BOT. REINF. 2'0" INTO 2B22
2B22	8	20 1/2	2	*7	2	*7	20	*3 2x3, 6x6, 2x10	T
2B23	9	16	2	*6	2	*7	22	*3 1x3, 2x10	S - TOP REINF. 4'0" INTO 2B24
2B24	9	16	2	*6	2	*7	6	*3 1x3, 2x10	T - TOP REINF. 3'0" INTO 2B24
2B25	8	20 1/2	2	*7	2	*6	6	*3 1x3, 2x10	T
2B26	8	20 1/2	2	*7	2	*6	14	*3 1x3, 6x10	T
2B27	8	20 1/2	2	*6	2	*6	10	*3 1x3, 4x8	T - SEE (C) FOR SILL
2B28	12	15	2	*8	2	*8	10	*3 1x3, 4x8	T - DETAIL @ ELEV.
2B29	8	20 1/2	2	*7	2	*7	10	*3 1x3, 4x8	T
2B30	12	15	2	*8	2	*8	10	*3 1x3, 4x8	T
2B31	8	20 1/2	2	*7	2	*7	10	*3 1x3, 4x8	T
2B32	8	20 1/2	2	*7	2	*7	10	*3 1x3, 4x8	T
2B33	16	5 1/2	3	*7	3	*7	1		
2B34	8	20 1/2	2	*7	2	*5	6	*3 1x3, 2x10	S
2B7	14	22	2	*7	2	*7	8	*3 1x3, 3x8	T
2B8	14	22	2	*7	2	*6	22	*3 2x3, 6x6, 3x12	T - TAB REINF. THRU 2B7
2B9	14	22	2	*6	2	*6	22	*3 2x3, 6x6, 3x12	T
2B10	12	22	2	*8	2	*7	26	*3 4x3, 8x6, 2x10	T
2B11	8	20 1/2	2	*8	2	*7	20	*3 2x3, 6x6, 2x10	T - TAB REINF. THRU 2B10
2B12	8	20 1/2	2	*8	2	*6	12	*3 3x3, 3x6	S
2B13	8	20 1/2	2	*7	2	*7	20	*3 2x3, 6x6, 2x10	S - TOP REINF. THRU 2B15
2B15	20	15	3	*7	3	*7	20	*3 2x3, 8x6	S - @ 8" @ 0" HOOK @ TOP EARS
2B16	24	14	3	*7	3	*7	20	*3 2x3, 8x6	S
2B17	24	14	4	*7	3	*7	20	*3 2x3, 8x6	T - @ 8" @ 0" HOOK @ TOP EARS

BEAM NOTES: 1. LAP ALL BOTTOM BARS 18" AT SUPPORT; 2. VERIFY EXACT BEAM SHAPES FROM ARCHITECTURAL DRAWINGS.



TYP EXTERIOR BEAM DETAIL

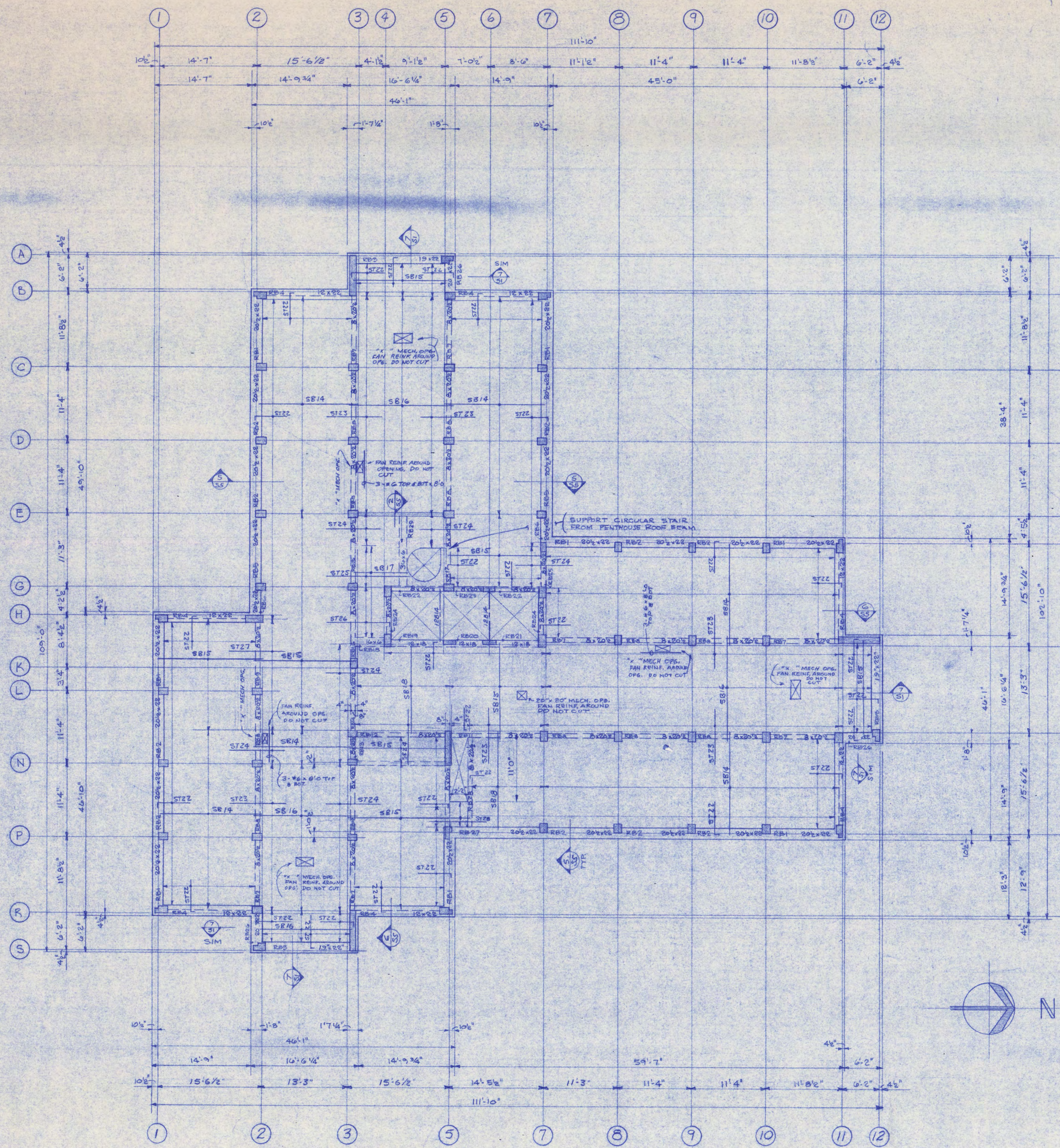


TYP INTERIOR BEAM DETAIL

**CONCRETE BEAM SCHEDULE**

BEAM MARK	BEAM W	D	NO.	STR.	NO.	SIZE	TOP EARS	STIRRUPS OR TIES	REMARKS
PB1	8	16	2	*9	2	*10	12	*3 4x3, 4x6	T
PB2	8	16	2	*9	2	*7	12	*3 4x3, 4x6	T
PB3	8	16	2	*9	2	*7	12	*3 4x3, 4x6	T
RB1	20 1/2	22	3	*8	2	*5	30	*3 2x3, 5x10	T
RB2	20 1/2	22	3	*8	2	*5	30	*3 2x3, 5x10	T
RB3	19	21	3	*8	2	*6	14	*3 2x3, 5x10	T
RB4	20 1/2	22	3	*8	2	*6	14	*3 2x3, 5x10	T
RB5	20 1/2	22	3	*8	2	*6	14	*3 2x3, 5x10	T
RB6	20 1/2	22	3	*8	2	*6	14	*3 2x3, 5x10	T
RB7	8	20 1/2	2	*6	2	*6	10	*3 2x3, 5x10	S
RB8	8	20 1/2	2	*6	2	*5	10	*3 2x3, 5x10	S
RB9	8	20 1/2	2	*5	2	*5	10	*3 2x3, 5x10	S
RB10	8	20 1/2	2	*5	2	*5	10	*3 2x3, 5x10	S
RB11	8	20 1/2	2	*5	2	*5	10	*3 2x3, 5x10	S
RB12	8	20 1/2	2	*7	2	*7	18	*3 2x3, 7x10	S
RB13	8	20 1/2	2	*7	2	*7	18	*3 2x3, 7x10	S
RB14	8	20 1/2	2	*6	2	*6	14	*3 2x3, 5x10	S
RB15	8	20 1/2	2	*6	2	*6	14	*3 2x3, 5x10	S
RB16	8	20 1/2	2	*7	2	*7	18	*3 2x3, 7x10	S
RB17	8	20 1/2	2	*7	2	*6	14	*3 2x3, 5x10	S
RB18	16	6	4	*4	4	*6			
RB19	12	15	2	*5	2	*6	12	*3 1x3, 2x10	T - TOP & BOT REINF. CONTIN. FROM J4 TO J7
RB20	12	15	2	*5	2	*6	12	*3 1x3, 2x10	T - TOP & BOT REINF. CONTIN. FROM J4 TO J7
RB21	12	15	2	*5	2	*6	12	*3 1x3, 2x10	T - TOP & BOT REINF. CONTIN. FROM J4 TO J7
RB22	8	20 1/2	2	*5	2	*6	12	*3 1x3, 2x10	T - TOP & BOT REINF. CONTIN. FROM J4 TO J7
RB23	8	20 1/2	2	*5	2	*6	12	*3 1x3, 2x10	T - TOP & BOT REINF. CONTIN. FROM J4 TO J7
RB24	8	20 1/2	2	*6	2	*5	8	*3 1x3, 3x6	T
RB25	8	20 1/2	2	*6	2	*5	8	*3 1x3, 3x6	T
RB26	20	22	3	*5	3	*5	10	*3 5x8	T
RB27	20 1/2	22	3	*6	2	*7	22	*3 6x8, 5x10	T
RB28	8	20 1/2	2	*7	2	*5	10	*3 2x3, 3x10	S
RB29	36	6	4	*9	3	*5			
2B18	8	22	2	*6	2	*7	12	*3 2x3, 3x10	T
2B19	24	14	4	*7	5	*7	20	*3 2x3, 8x6	T
2B20	14 1/2	22	2	*8	1	*7	20	*3 2x3, 8x6	T
2B21	14 1/2	22	2	*8	1	*7	20	*3 2x3, 8x6	T
2B22	24	14	4	*7	5	*7	20	*3 2x3, 8x6	T
2B23	8	20 1/2	2	*9	2	*8	16	*3 2x3, 6x8	S
2B24	8	20 1/2	2	*9	2	*8	16	*3 2x3, 6x8	S
2B25	8	20 1/2	2	*8	2	*8	20	*3 2x3, 6x6, 2x10	T
2B26	8	20 1/2	2	*8	2	*8	20	*3 2x3, 6x6, 2x10	T
2B27	14	15	3	*9	3	*9	28	*3 2x3, 10x8	T
2B28	14	15	3	*9	3	*9	28	*3 2x3, 10x8	T
2B29	14 1/2	22	2	*8	2	*7	22	*3 2x3, 6x6, 3x12	T
2B30	14 1/2	22	2	*8	2	*7	22	*3 2x3, 6x6, 3x12	T
2B31	20	15	3	*7	3	*7	20	*3 2x3, 8x6	S

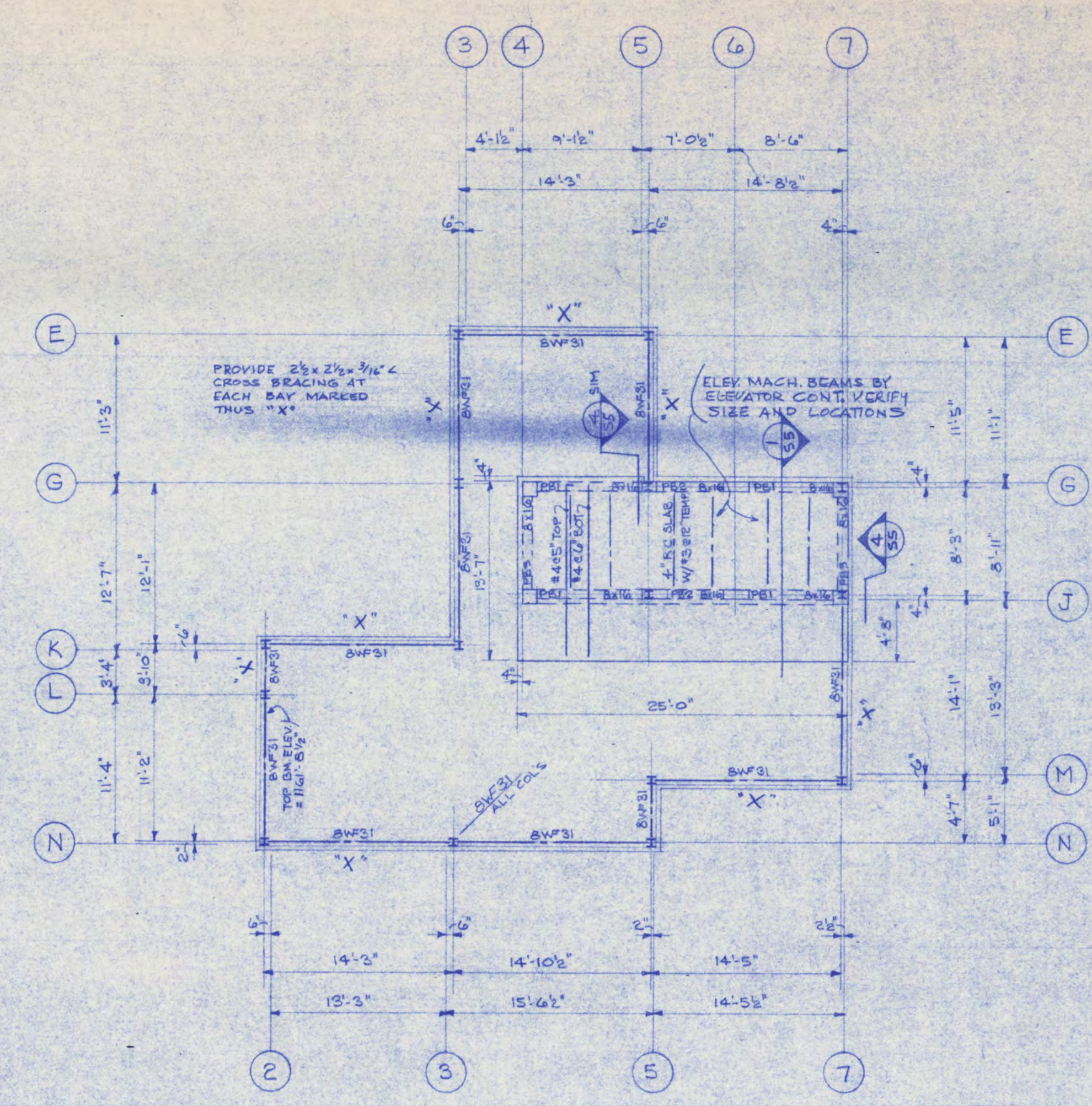
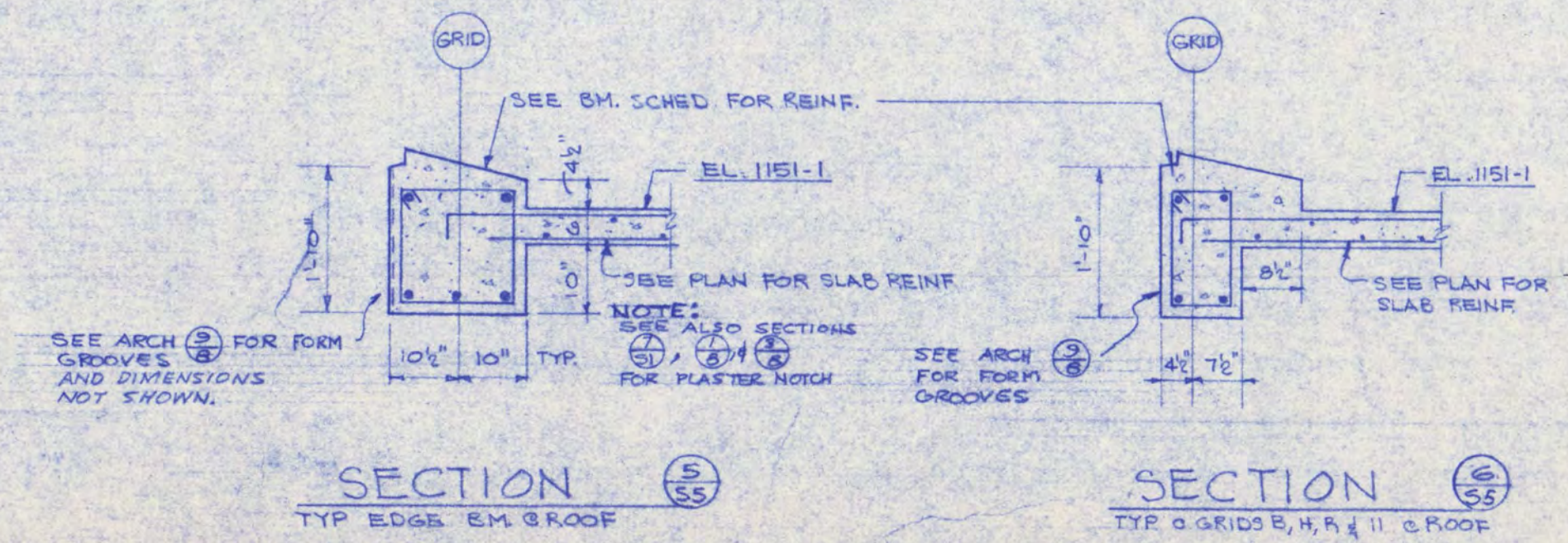




**ROOF FRAMING PLAN**

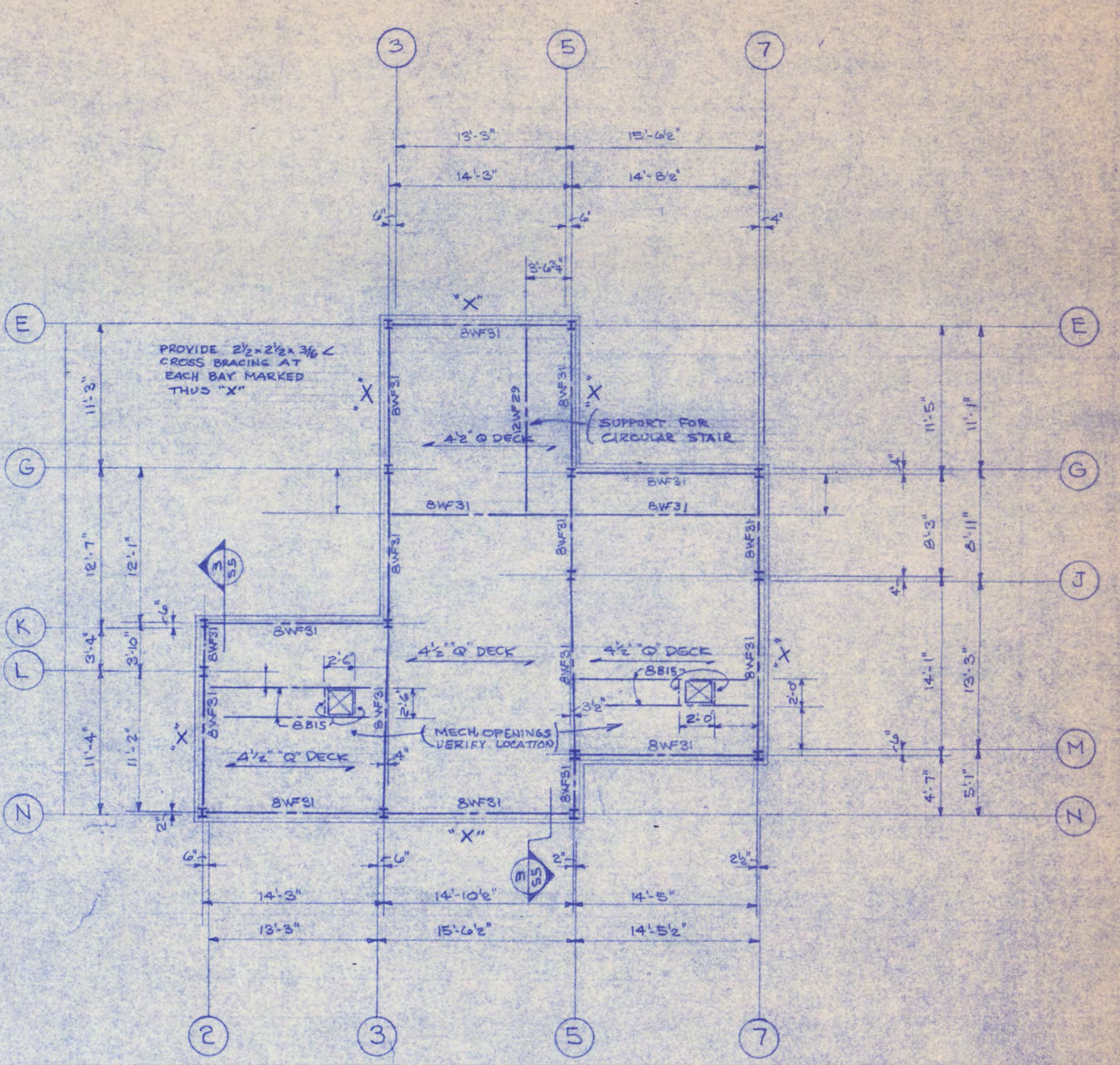
6" CONCRETE SLAB @ #4 @ 16" TEMP. REIN.  
TOP SLAB ELEVATION = 1161'-1"

MARK	REINFORCING	TOP	BOT
ST22	#5 @ 10" x 8" x 12"		
ST23	#5 @ 8" x 8"		
ST24	#5 @ 8" x 8"		
ST25	#5 @ 8" x 8" LENGTH W/AS		
ST26	#5 @ 10" x 8" x 8"		
ST27	#5 @ 8" x 8" x 8"		
ST28	#5 @ 12" x 10" @ 8"		
SB19	#5 @ 8"		
SB20	#5 @ 8"		
SB21	#5 @ 8"		
SB22	#5 @ 8"		
SB23	#5 @ 8"		
SB24	#5 @ 8"		
SB25	#5 @ 8"		
SB26	#5 @ 8"		
SB27	#5 @ 8"		
SB28	#5 @ 8"		



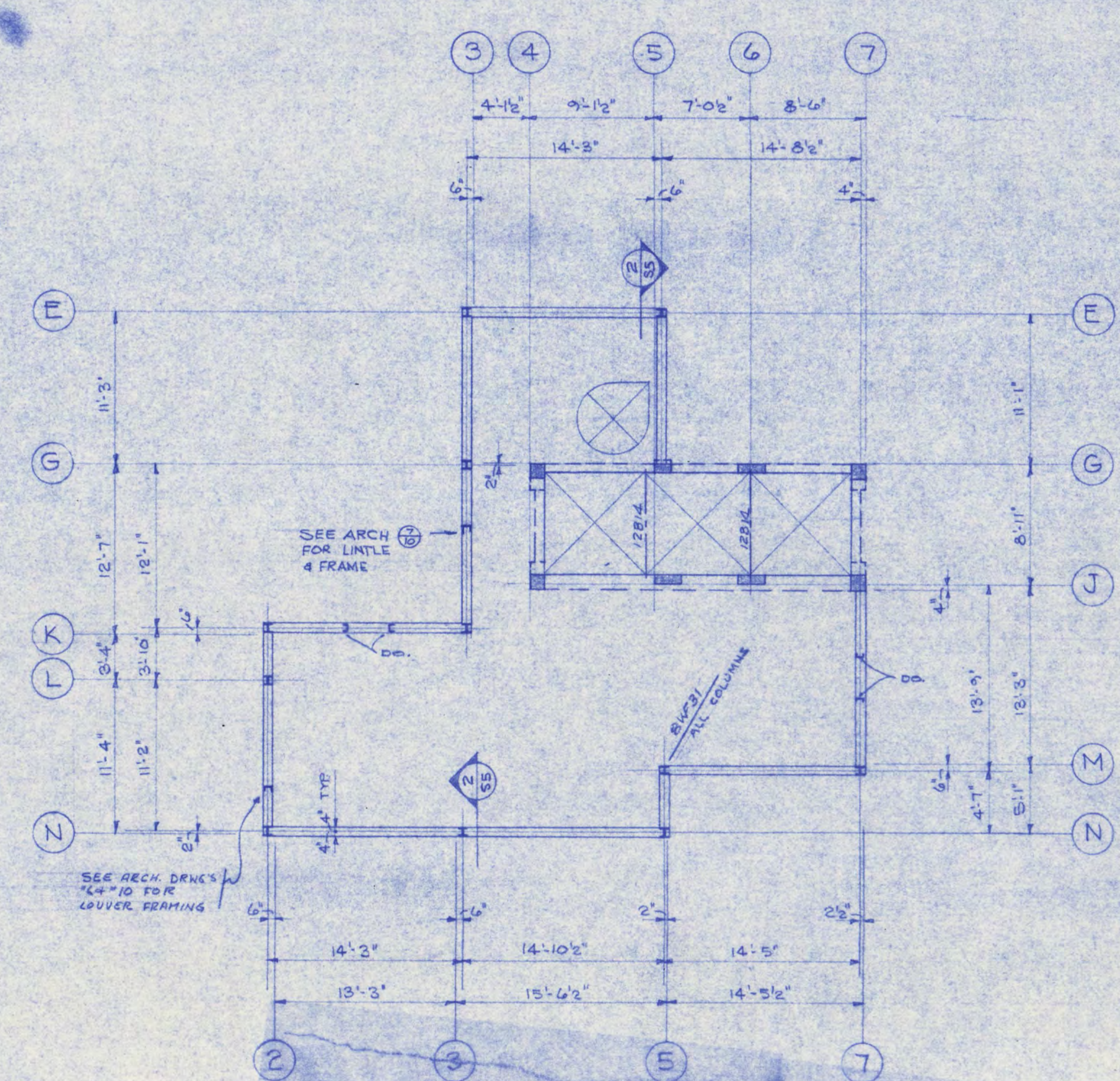
**FRAMING PLAN OF ELEV. MACH. PLATFORM**

ELEVATION TOP OF BWF31 BEAMS = 1160'-8" UNLESS NOTED  
ELEVATION TOP OF 4" R.C. PLATFORM SLAB = 1161'-2"

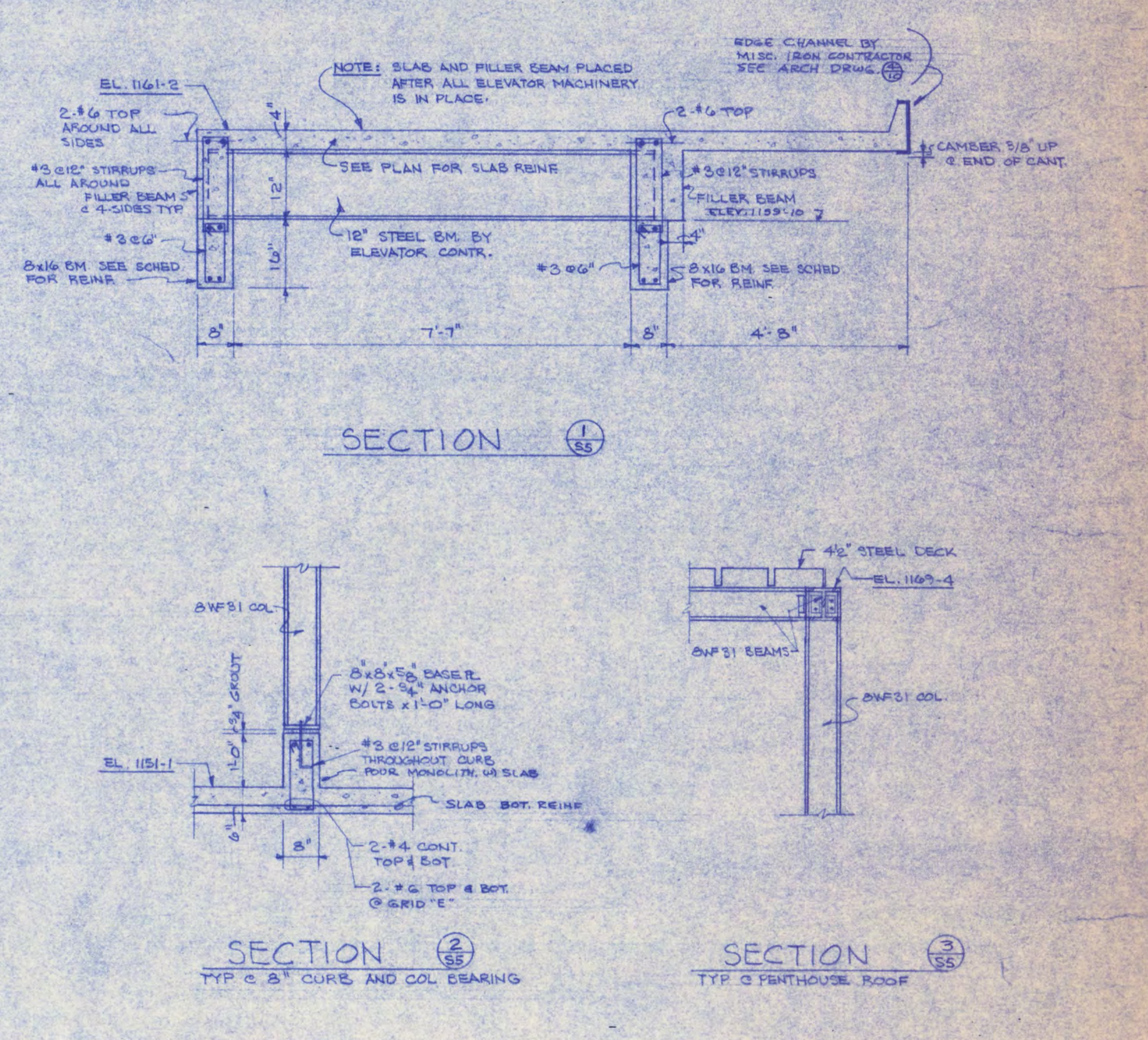


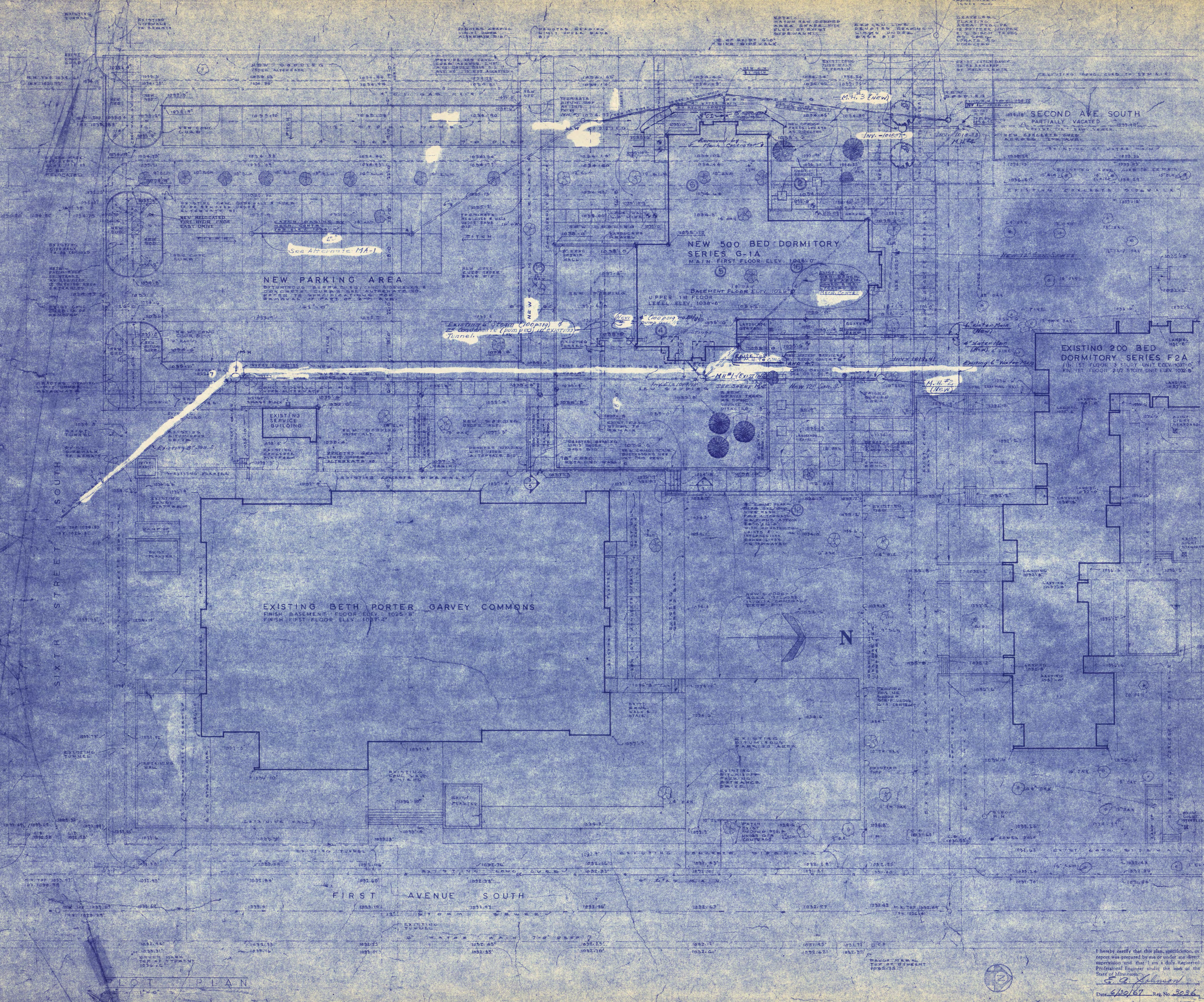
**PENTHOUSE ROOF FRAMING PLAN**

ELEVATION TOP OF STEEL BEAMS = 1160'-4"  
ROOF DECK: ROBERTSON "A" DECK" SECTION 12-20 GAUGE  
NOTE: DO NOT SUPPORT MECHANICAL EQUIPMENT FROM DECK.



**PENTHOUSE CURB AND COLUMN PLAN**





**PLOT PLAN DATA**

GRABER: EXISTING 1955-56  
ESTABLISHED 1955-56

TERMS: REMOVE  
SAVE

TEST BORING: (3)

**DETAIL NUMBERS**

3 5 DETAIL NUMBER  
3 5 SHEET NUMBER  
3 5 NAME AS ABOVE  
3 5 DIRECTION OF SECTION/DETAIL  
3 5 NAME AS ABOVE  
3 5 DIRECTION OF ELEVATION DETAIL  
132 INDICATES BARR NUMBER  
102 INDICATES DOOR FRAME NO.  
A INDICATES FINISHED GROUND LEVEL

**MATERIAL SYMBOLS**

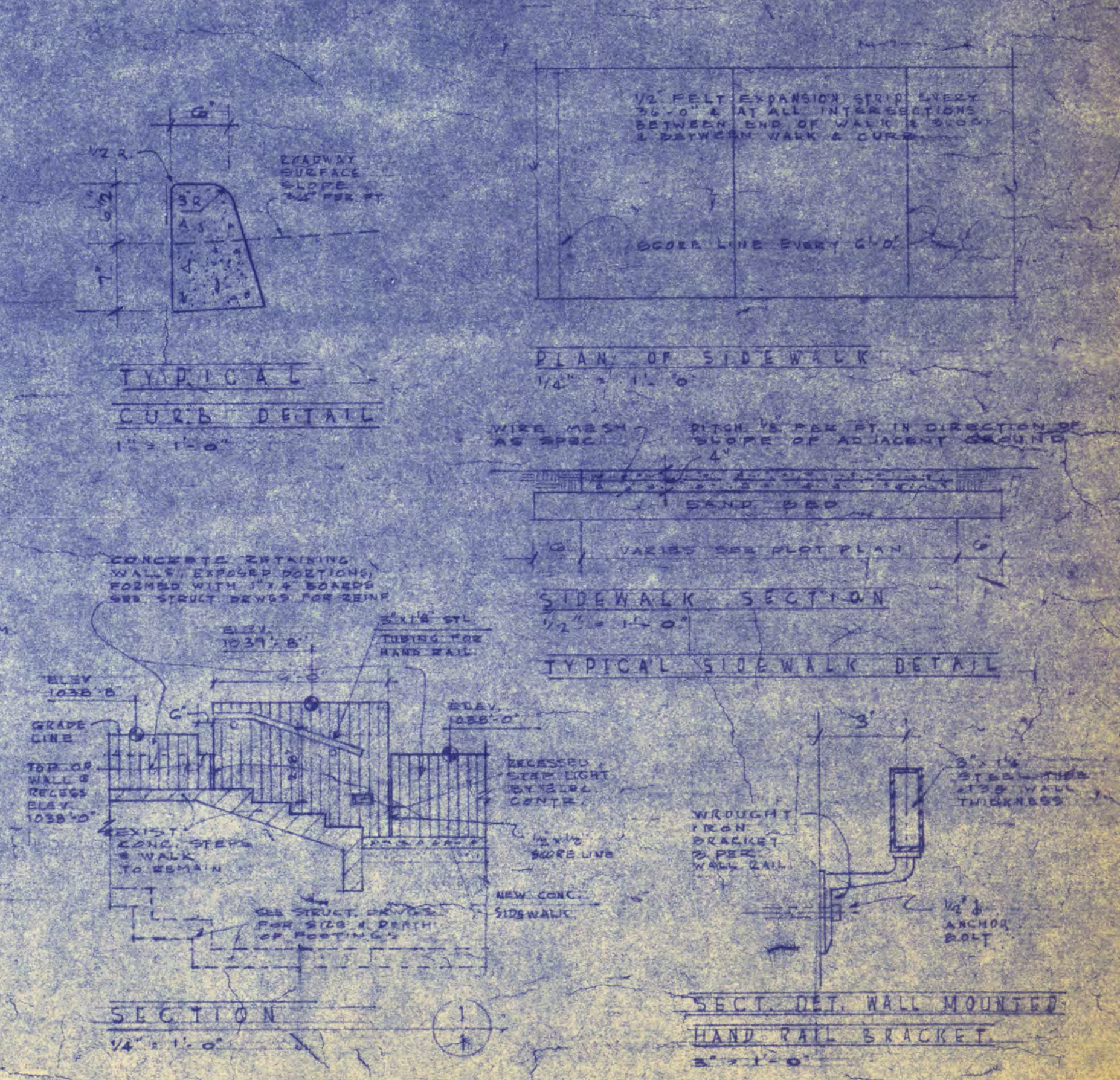
GRAVEL	GRAVEL
CONCRETE	CONCRETE
ASPH. CONC.	ASPH. CONC.
BRICK	BRICK
GLASS BLOCK	GLASS BLOCK
STREET TILL	STREET TILL
FACING TILE	FACING TILE
WOOD	WOOD
STEEL IN SECTION	STEEL IN SECTION
STEEL W/AL IN ELEVATION	STEEL W/AL IN ELEVATION
COMMON BRICK	COMMON BRICK

**SOIL BORING DATA**

BORING NO.	2	3	4	5	6	12	15	16
FIN. 1ST FLOOR	0	0	0	0	0	0	0	0
FIN. 2ND FLOOR	1	1	1	1	1	1	1	1
FIN. 3RD FLOOR	2	2	2	2	2	2	2	2
FIN. 4TH FLOOR	3	3	3	3	3	3	3	3
FIN. 5TH FLOOR	4	4	4	4	4	4	4	4
FIN. 6TH FLOOR	5	5	5	5	5	5	5	5
FIN. 7TH FLOOR	6	6	6	6	6	6	6	6
FIN. 8TH FLOOR	7	7	7	7	7	7	7	7
FIN. 9TH FLOOR	8	8	8	8	8	8	8	8
FIN. 10TH FLOOR	9	9	9	9	9	9	9	9
FIN. 11TH FLOOR	10	10	10	10	10	10	10	10
FIN. 12TH FLOOR	11	11	11	11	11	11	11	11
FIN. 13TH FLOOR	12	12	12	12	12	12	12	12
FIN. 14TH FLOOR	13	13	13	13	13	13	13	13
FIN. 15TH FLOOR	14	14	14	14	14	14	14	14
FIN. 16TH FLOOR	15	15	15	15	15	15	15	15
FIN. 17TH FLOOR	16	16	16	16	16	16	16	16
FIN. 18TH FLOOR	17	17	17	17	17	17	17	17
FIN. 19TH FLOOR	18	18	18	18	18	18	18	18
FIN. 20TH FLOOR	19	19	19	19	19	19	19	19
FIN. 21ST FLOOR	20	20	20	20	20	20	20	20
FIN. 22ND FLOOR	21	21	21	21	21	21	21	21
FIN. 23RD FLOOR	22	22	22	22	22	22	22	22
FIN. 24TH FLOOR	23	23	23	23	23	23	23	23
FIN. 25TH FLOOR	24	24	24	24	24	24	24	24
FIN. 26TH FLOOR	25	25	25	25	25	25	25	25
FIN. 27TH FLOOR	26	26	26	26	26	26	26	26
FIN. 28TH FLOOR	27	27	27	27	27	27	27	27
FIN. 29TH FLOOR	28	28	28	28	28	28	28	28
FIN. 30TH FLOOR	29	29	29	29	29	29	29	29
FIN. 31ST FLOOR	30	30	30	30	30	30	30	30
FIN. 32ND FLOOR	31	31	31	31	31	31	31	31
FIN. 33RD FLOOR	32	32	32	32	32	32	32	32
FIN. 34TH FLOOR	33	33	33	33	33	33	33	33
FIN. 35TH FLOOR	34	34	34	34	34	34	34	34
FIN. 36TH FLOOR	35	35	35	35	35	35	35	35
FIN. 37TH FLOOR	36	36	36	36	36	36	36	36
FIN. 38TH FLOOR	37	37	37	37	37	37	37	37
FIN. 39TH FLOOR	38	38	38	38	38	38	38	38
FIN. 40TH FLOOR	39	39	39	39	39	39	39	39
FIN. 41ST FLOOR	40	40	40	40	40	40	40	40
FIN. 42ND FLOOR	41	41	41	41	41	41	41	41
FIN. 43RD FLOOR	42	42	42	42	42	42	42	42
FIN. 44TH FLOOR	43	43	43	43	43	43	43	43
FIN. 45TH FLOOR	44	44	44	44	44	44	44	44
FIN. 46TH FLOOR	45	45	45	45	45	45	45	45
FIN. 47TH FLOOR	46	46	46	46	46	46	46	46
FIN. 48TH FLOOR	47	47	47	47	47	47	47	47
FIN. 49TH FLOOR	48	48	48	48	48	48	48	48
FIN. 50TH FLOOR	49	49	49	49	49	49	49	49
FIN. 51ST FLOOR	50	50	50	50	50	50	50	50
FIN. 52ND FLOOR	51	51	51	51	51	51	51	51
FIN. 53RD FLOOR	52	52	52	52	52	52	52	52
FIN. 54TH FLOOR	53	53	53	53	53	53	53	53
FIN. 55TH FLOOR	54	54	54	54	54	54	54	54
FIN. 56TH FLOOR	55	55	55	55	55	55	55	55
FIN. 57TH FLOOR	56	56	56	56	56	56	56	56
FIN. 58TH FLOOR	57	57	57	57	57	57	57	57
FIN. 59TH FLOOR	58	58	58	58	58	58	58	58
FIN. 60TH FLOOR	59	59	59	59	59	59	59	59
FIN. 61ST FLOOR	60	60	60	60	60	60	60	60
FIN. 62ND FLOOR	61	61	61	61	61	61	61	61
FIN. 63RD FLOOR	62	62	62	62	62	62	62	62
FIN. 64TH FLOOR	63	63	63	63	63	63	63	63
FIN. 65TH FLOOR	64	64	64	64	64	64	64	64
FIN. 66TH FLOOR	65	65	65	65	65	65	65	65
FIN. 67TH FLOOR	66	66	66	66	66	66	66	66
FIN. 68TH FLOOR	67	67	67	67	67	67	67	67
FIN. 69TH FLOOR	68	68	68	68	68	68	68	68
FIN. 70TH FLOOR	69	69	69	69	69	69	69	69
FIN. 71ST FLOOR	70	70	70	70	70	70	70	70
FIN. 72ND FLOOR	71	71	71	71	71	71	71	71
FIN. 73RD FLOOR	72	72	72	72	72	72	72	72
FIN. 74TH FLOOR	73	73	73	73	73	73	73	73
FIN. 75TH FLOOR	74	74	74	74	74	74	74	74
FIN. 76TH FLOOR	75	75	75	75	75	75	75	75
FIN. 77TH FLOOR	76	76	76	76	76	76	76	76
FIN. 78TH FLOOR	77	77	77	77	77	77	77	77
FIN. 79TH FLOOR	78	78	78	78	78	78	78	78
FIN. 80TH FLOOR	79	79	79	79	79	79	79	79
FIN. 81ST FLOOR	80	80	80	80	80	80	80	80
FIN. 82ND FLOOR	81	81	81	81	81	81	81	81
FIN. 83RD FLOOR	82	82	82	82	82	82	82	82
FIN. 84TH FLOOR	83	83	83	83	83	83	83	83
FIN. 85TH FLOOR	84	84	84	84	84	84	84	84
FIN. 86TH FLOOR	85	85	85	85	85	85	85	85
FIN. 87TH FLOOR	86	86	86	86	86	86	86	86
FIN. 88TH FLOOR	87	87	87	87	87	87	87	87
FIN. 89TH FLOOR	88	88	88	88	88	88	88	88
FIN. 90TH FLOOR	89	89	89	89	89	89	89	89
FIN. 91ST FLOOR	90	90	90	90	90	90	90	90
FIN. 92ND FLOOR	91	91	91	91	91	91	91	91
FIN. 93RD FLOOR	92	92	92	92	92	92	92	92
FIN. 94TH FLOOR	93	93	93	93	93	93	93	93
FIN. 95TH FLOOR	94	94	94	94	94	94	94	94
FIN. 96TH FLOOR	95	95	95	95	95	95	95	95
FIN. 97TH FLOOR	96	96	96	96	96	96	96	96
FIN. 98TH FLOOR	97	97	97	97	97	97	97	97
FIN. 99TH FLOOR	98	98	98	98	98	98	98	98
FIN. 100TH FLOOR	99	99	99	99	99	99	99	99

**SOIL TYPE LEGEND**

A. ALLUUVIAL SAND, SANDY SILT, WITH SOME GRAVEL  
B. ALLUUVIAL SAND, SANDY SILT, WITH SOME GRAVEL  
C. ALLUUVIAL SAND, SANDY SILT, WITH SOME GRAVEL  
D. ALLUUVIAL SAND, SANDY SILT, WITH SOME GRAVEL  
E. ALLUUVIAL SAND, SANDY SILT, WITH SOME GRAVEL  
F. ALLUUVIAL SAND, SANDY SILT, WITH SOME GRAVEL  
G. ALLUUVIAL SAND, SANDY SILT, WITH SOME GRAVEL  
H. ALLUUVIAL SAND, SANDY SILT, WITH SOME GRAVEL  
I. ALLUUVIAL SAND, SANDY SILT, WITH SOME GRAVEL  
J. ALLUUVIAL SAND, SANDY SILT, WITH SOME GRAVEL  
K. ALLUUVIAL SAND, SANDY SILT, WITH SOME GRAVEL  
L. ALLUUVIAL SAND, SANDY SILT, WITH SOME GRAVEL  
M. ALLUUVIAL SAND, SANDY SILT, WITH SOME GRAVEL  
N. ALLUUVIAL SAND, SANDY SILT, WITH SOME GRAVEL  
O. ALLUUVIAL SAND, SANDY SILT, WITH SOME GRAVEL  
P. ALLUUVIAL SAND, SANDY SILT, WITH SOME GRAVEL  
Q. ALLUUVIAL SAND, SANDY SILT, WITH SOME GRAVEL  
R. ALLUUVIAL SAND, SANDY SILT, WITH SOME GRAVEL  
S. ALLUUVIAL SAND, SANDY SILT, WITH SOME GRAVEL  
T. ALLUUVIAL SAND, SANDY SILT, WITH SOME GRAVEL  
U. ALLUUVIAL SAND, SANDY SILT, WITH SOME GRAVEL  
V. ALLUUVIAL SAND, SANDY SILT, WITH SOME GRAVEL  
W. ALLUUVIAL SAND, SANDY SILT, WITH SOME GRAVEL  
X. ALLUUVIAL SAND, SANDY SILT, WITH SOME GRAVEL  
Y. ALLUUVIAL SAND, SANDY SILT, WITH SOME GRAVEL  
Z. ALLUUVIAL SAND, SANDY SILT, WITH SOME GRAVEL



I hereby certify that this plan, specification, or report was prepared by me or under my direct supervision and that I am a duly Registered Professional Engineer under the laws of the State of Minnesota.

**E. A. Johnson**  
Date: 6/30/67 Reg. No. 3036