

SHOEMAKER HALL

NOTES:
 1. ALL THICK SAVED BRONZE PLATE LETTERS (CUT) TO BE AS ABOVE LETTERS TO BE THICKLY HOLLOWED FROM PLATE OF WOOD WITH WELDED CHANNELS. ALL BOLTED WOOD BACKGROUND.

ELEVATION SCALE: 3/4" = 1'-0"

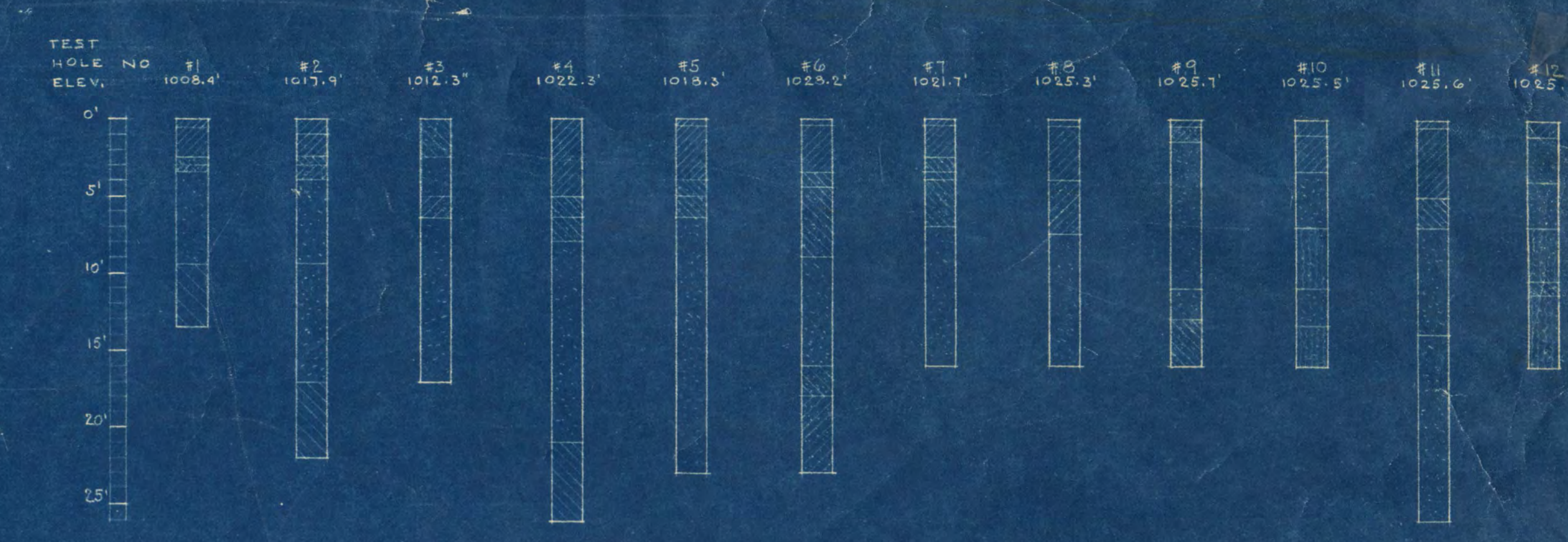
SECTION SCALE: 3/4" = 1'-0"

PLAN SCALE: 1/4" = 1'-0"

DETAILS OF LAWN SIGN.

PLOT PLAN SCALE: 1/8" = 1'-0"

TEST HOLE LOG:



TEST HOLE LEGEND - SOIL TYPES:

- FILL: BLACK OR DARK BROWN SANDY LOAM WITH LITTLE GRAVEL
- LOOSY SAND: WITH A LITTLE GRAVEL (MORIST)
- SAND: LIGHT BROWN COARSE SAND (MORIST) WITH SOME GRAVEL
- SANDY LOAM
- CLAY LOAM
- SILT LOAM
- MEDIUM TO STIFF, WITH A LITTLE GRAVEL
- WITH LENSES OF SAND MOST

MATERIAL LEGEND:

- EARTH
- CONCRETE
- FACE BRICK
- TILE
- COMMON BRICK
- MARBLE IN SECTION
- METAL IN SECT.
- METAL IN ELEV.
- WOOD IN SECT.
- PRESENT WORK TO REMAIN
- GRANITE IN SECT.
- PRESENT WORK TO BE REMOVED
- PLS. OR GEMENT IN SECTION
- RIGID INSULATION
- MASONRY BLOCK
- TERAZZO

1/2" FELT EXPANSION STRIP EVERY 50' OF E AT ALL INTERSECTIONS BETWEEN END OF WALK & BLOW-UP BETWEEN WALK & CURB.

CUT THROUGH EVERY 6'-0"

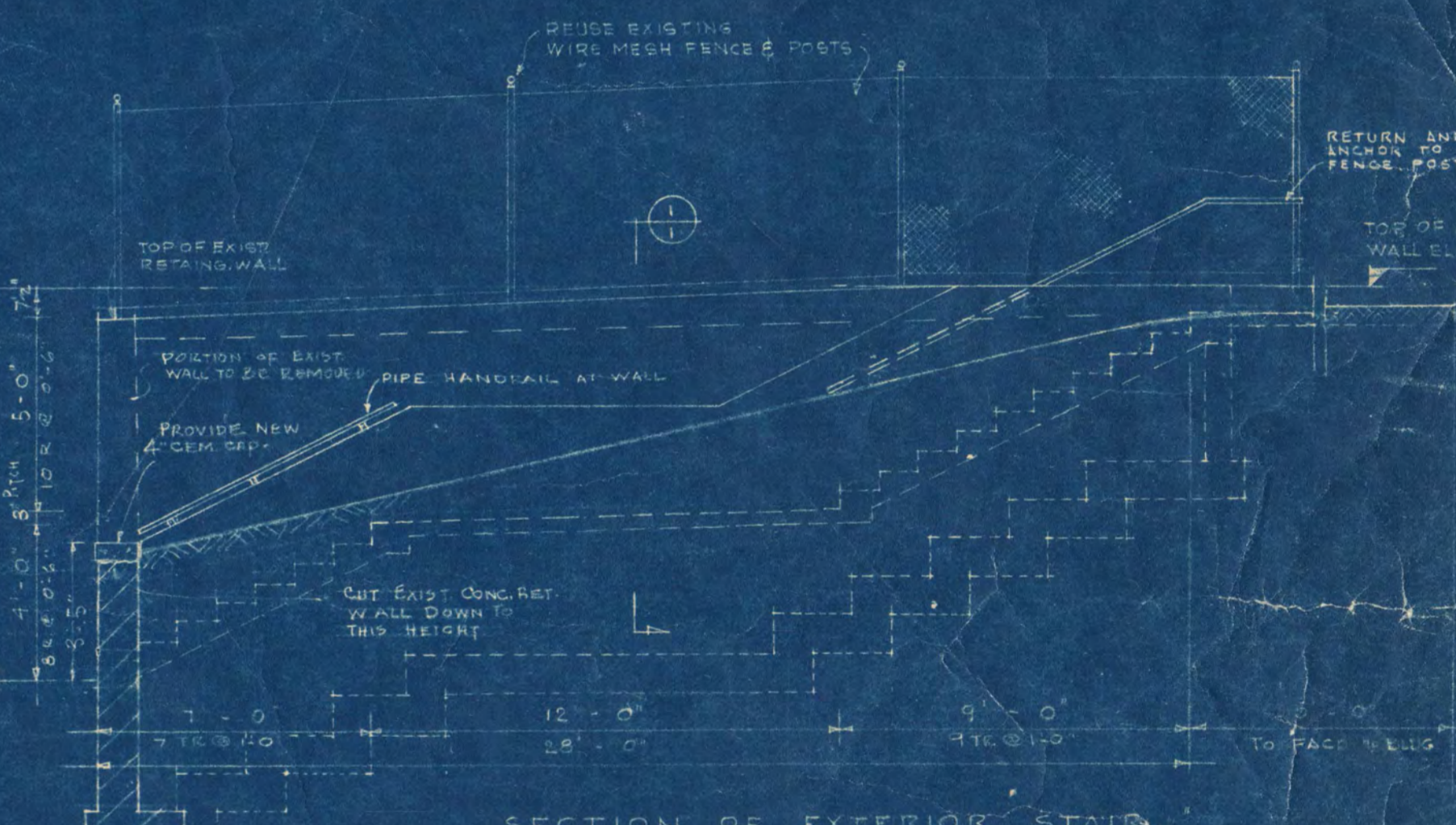
PLAN OF SIDEWALK DETAIL SCALE: 1/4" = 1'-0"

DETAIL NUMBER LEGEND

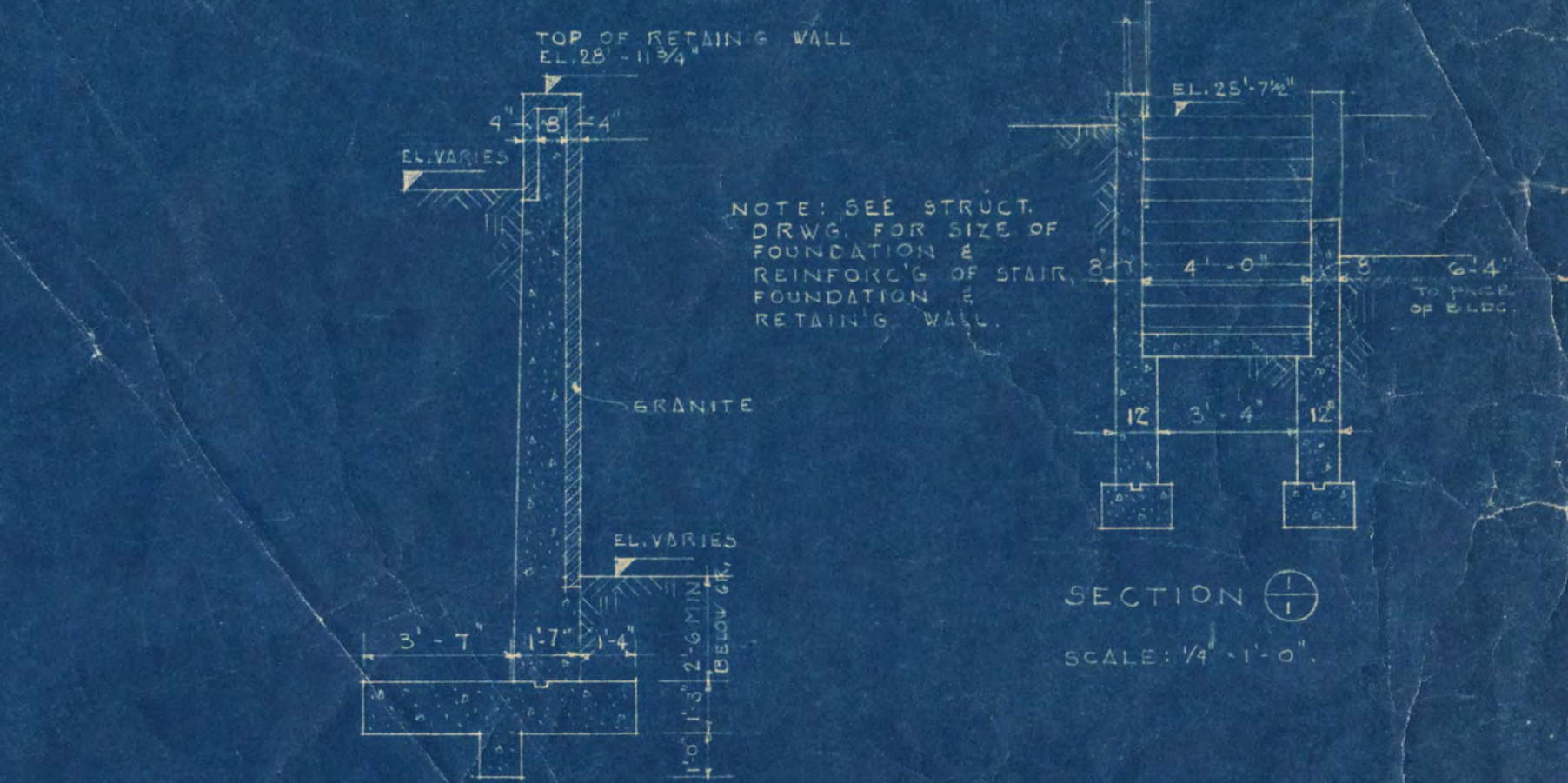
- 1: UPPER FIGURE INDICATES DRAWING NUMBER
- 2: LOWER FIGURE INDICATES DETAIL NUMBER
- 3: INDICATES OVER AS ABOVE AND IS A DETAIL FROM DETAIL DRAWING INDICATES DIRECTION TOWARD WHICH YOU ARE LOOKING
- 4: INDICATES SAME AS ABOVE AND IS AN ELEVATION DETAIL FROM DETAIL DRAWING INDICATES DIRECTION TOWARD WHICH YOU ARE LOOKING

EXAMPLE: THE ABOVE EXAMPLES INDICATE DETAIL NUMBER 5 OF 7 TO BE FOUND ON DRAWING NO. 9.

NOTES:
 ELEVATIONS ARE U.S.C. & G.S. DATUM
 BENCH MARKS:
 1. TOP HYDRANT N.W. CORNER 10TH & 1ST, ELEV. 1001.48
 2. TOP HYDRANT N.E. CORNER 9TH & 1ST, ELEV. 1021.64
 3. TOP NO. 20 HYDRANT 2ND & 10TH, ELEV. 1014.56
 4. MARK FOR ESTABLISH GRADE 179.1' FOR EXISTING GRADE



SECTION OF EXTERIOR STAIRS SCALE: 1/4" = 1'-0"



SECTION OF RETAINING WALL AT MAIN ENTRANCE SCALE: 1/4" = 1'-0"

ADDITION TO SHOEMAKER HALL ST. CLOUD STATE COLLEGE ST. CLOUD, MINN. E.S.O.P.

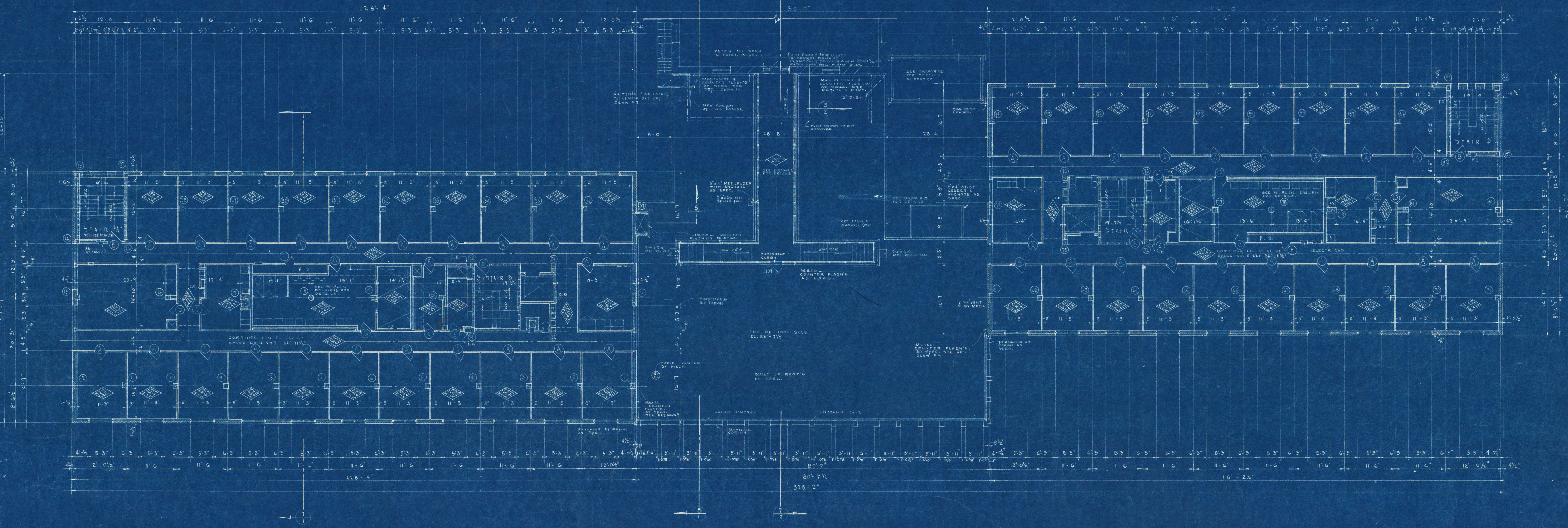
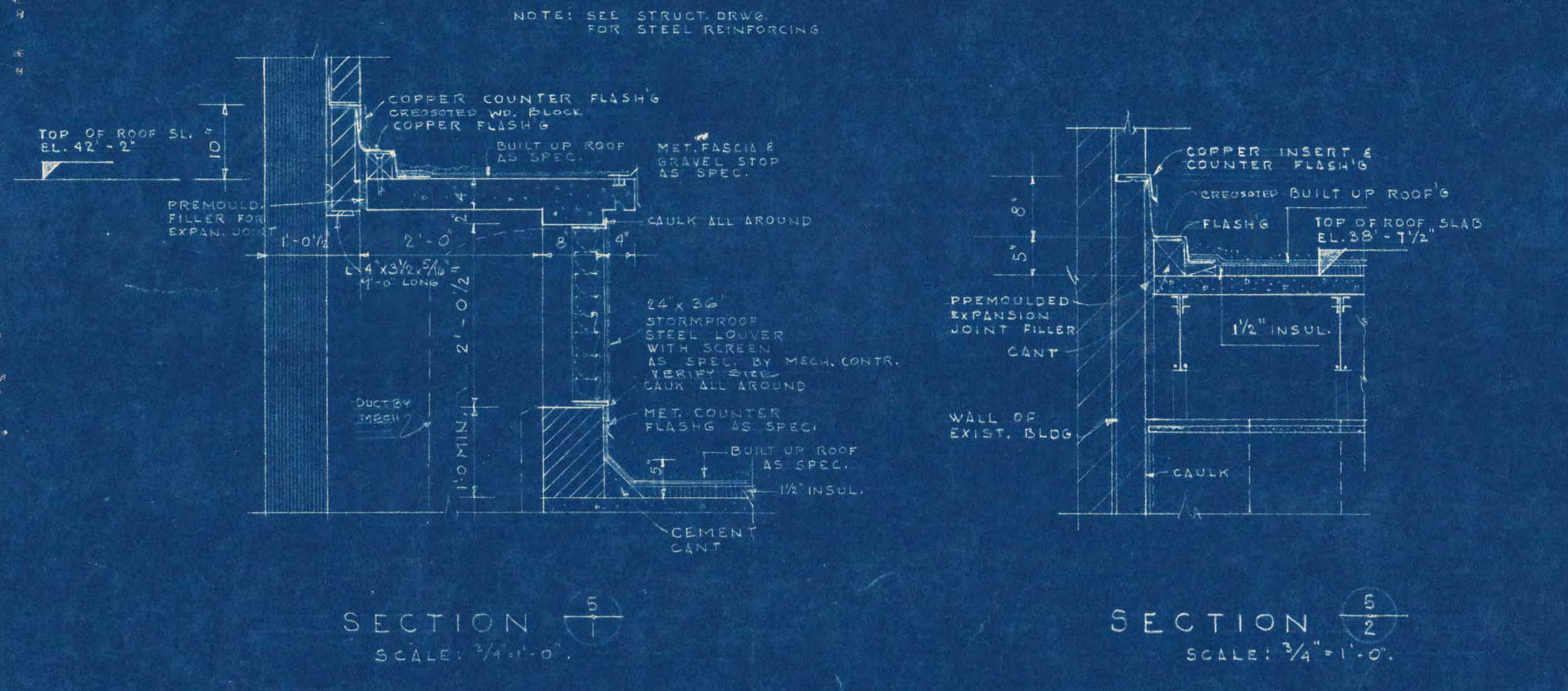
FRANK W. JACKSON ARCHITECTS, INC.
 507 W. 10TH ST. ST. CLOUD, MINN.
 APPROVED BY: [Signature]

DOOR SCHEDULE

MARK	DOOR SIZE	WIDTH	HEIGHT	TYPE	FRAME	GLASS	TRANSOM	REMARKS
A	2'0" x 6'8" 1/2"	2'0"	6'8" 1/2"	H. M.	See Sched.			UNDERWRITE TO GLASS
B	2'0" x 6'8" 1/2"	2'0"	6'8" 1/2"	H. M.				WOOD SLATS, 1/2"
C	2'0" x 6'8" 1/2"	2'0"	6'8" 1/2"	H. M.				WOOD SLATS, 1/2"
D	2'0" x 6'8" 1/2"	2'0"	6'8" 1/2"	H. M.				WOOD SLATS, 1/2"
E	2'0" x 6'8" 1/2"	2'0"	6'8" 1/2"	H. M.				WOOD SLATS, 1/2"
F	2'0" x 6'8" 1/2"	2'0"	6'8" 1/2"	H. M.				WOOD SLATS, 1/2"
100	2'0" x 6'8" 1/2"	2'0"	6'8" 1/2"	ALUMINUM				SEE MET. SIDING SPEC.

FLOORING	SPACE FINISH	WALLS	CEILING	TRIM	NOTED
...

FLOORING	SPACE FINISH	WALLS	CEILING	TRIM	NOTED
...



2ND, 3RD, & 4TH FLOOR PLANS
SCALE 1/8" = 1'-0"

ADDITION TO SHOEMAKER HALL
ST. CLOUD STATE COLLEGE
ST. CLOUD, MINNESOTA

FRANK W. JACKSON & ASSOCIATES, INC.
ST. CLOUD, MINNESOTA

APPROVED BY: *George J. East*

DATE: 3-2-59

SHEET NO. 5

PROJECT NO. 2718