

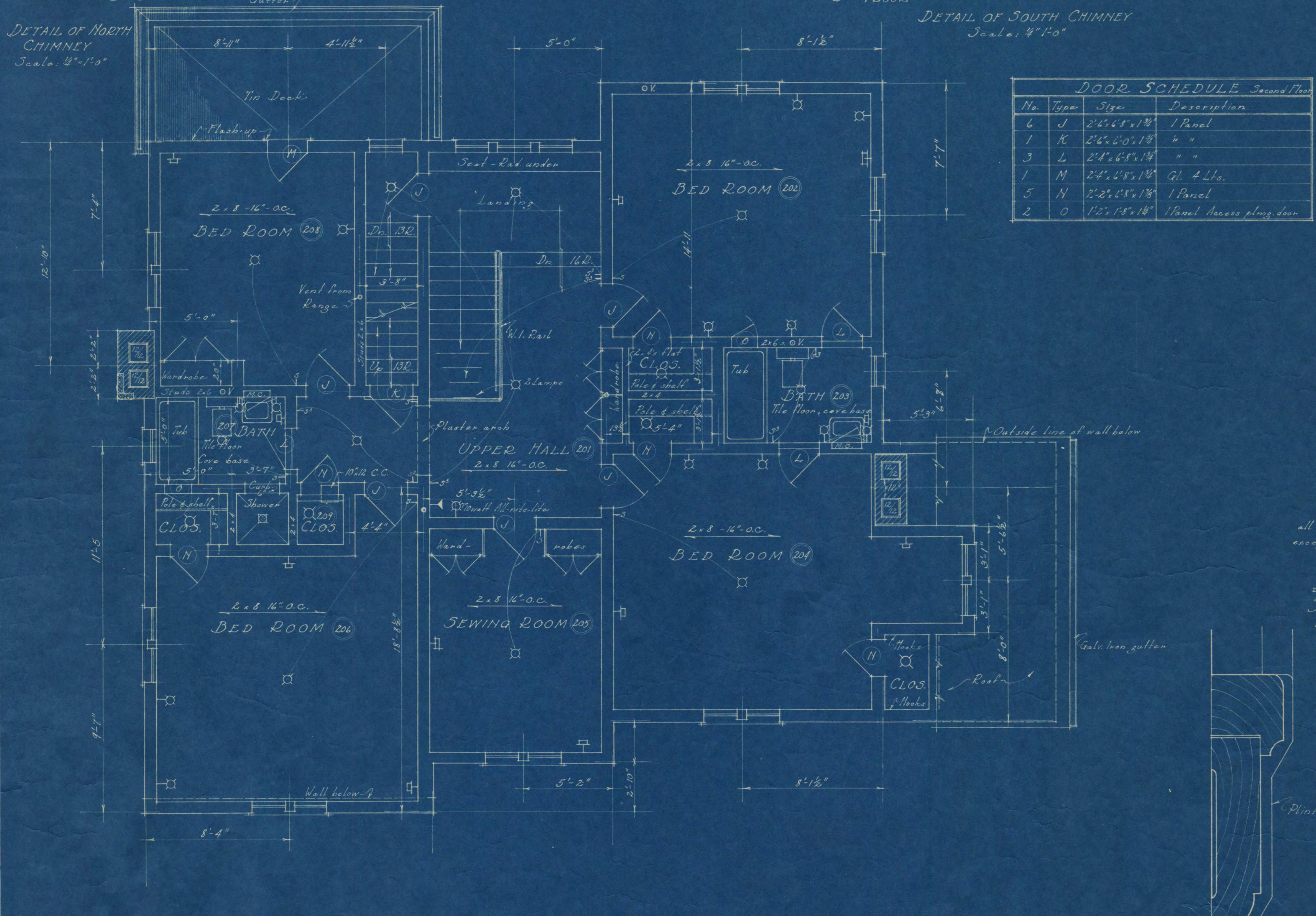
DETAIL OF NORTH CHIMNEY
Scale: 4"=1'-0"

DETAIL OF SOUTH CHIMNEY
Scale: 4"=1'-0"

DETAIL OF DORMER-BEDROOM (204)
Scale: 1/2"=1'-0"

DOOR SCHEDULE Second Floor

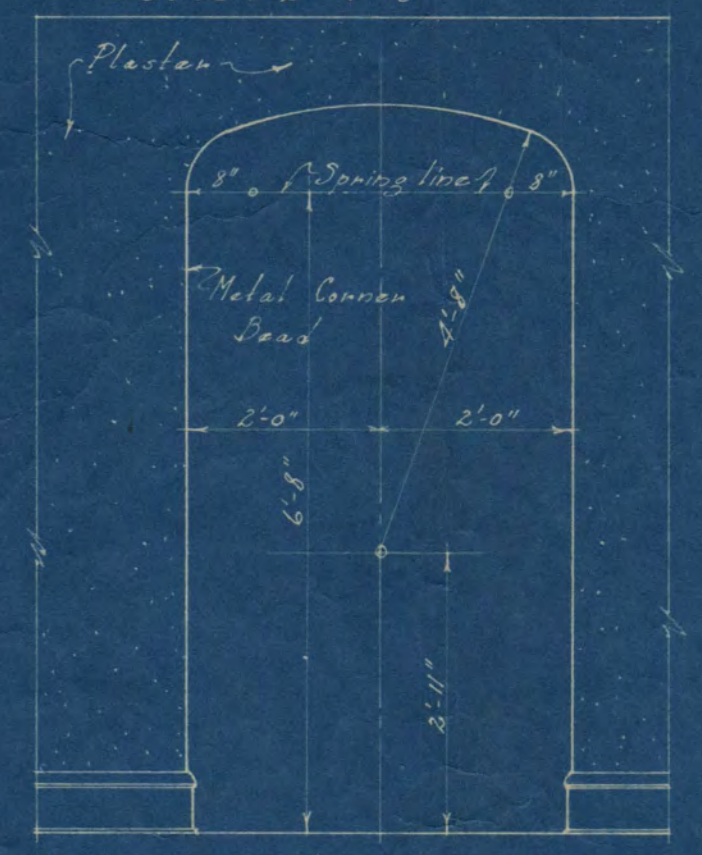
No.	Type	Size	Description
6	J	2'-6" x 6'-8" x 1 3/4"	1 Panel
1	K	2'-6" x 6'-0" x 1 3/4"	" "
3	L	2'-8" x 6'-8" x 1 3/4"	" "
1	M	2'-4" x 6'-8" x 1 3/4"	Gl. 4 Lts.
5	N	2'-2" x 6'-8" x 1 3/4"	1 Panel
2	O	1'-2" x 1'-8" x 1 3/4"	1 Panel Access plng. door



SECOND FLOOR PLAN
Scale: 1/4"=1'-0"



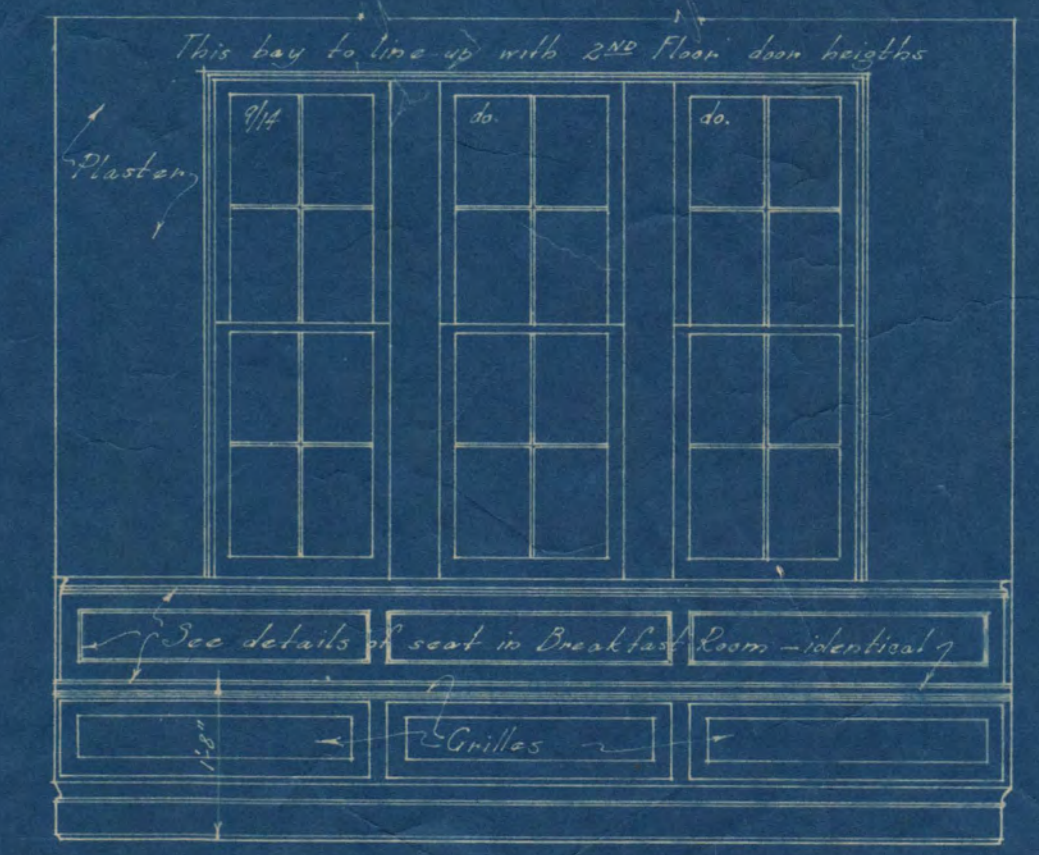
SHOE RACK
Scale: 3/8"=1'-0"



ARCH IN UPPER HALL
Scale: 1/2"=1'-0"



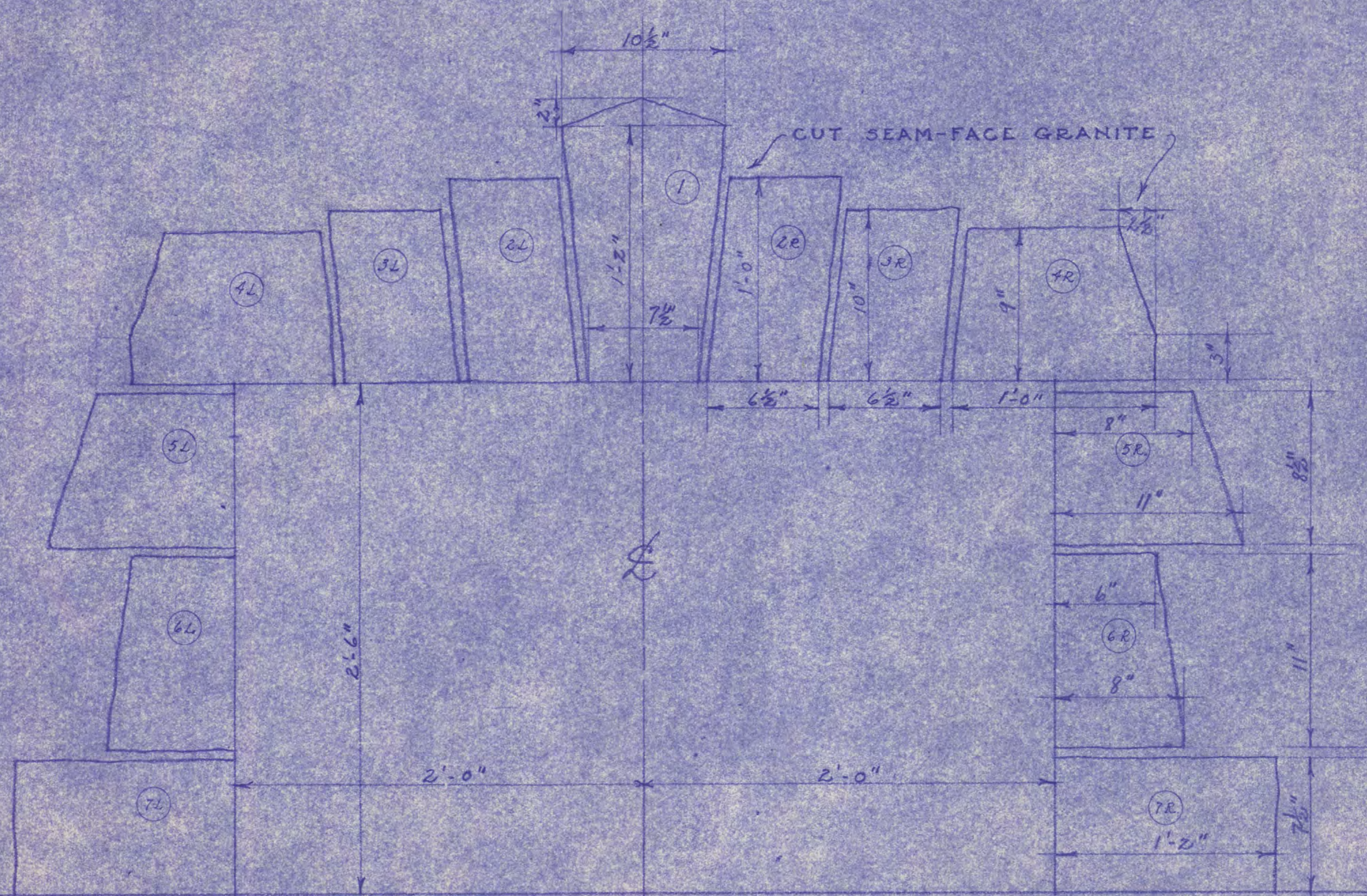
F.S. TRIM SECOND FL.



SEAT & RADIATOR ENCLOSURE ON LANDING Scale: 1/2"=1'-0"

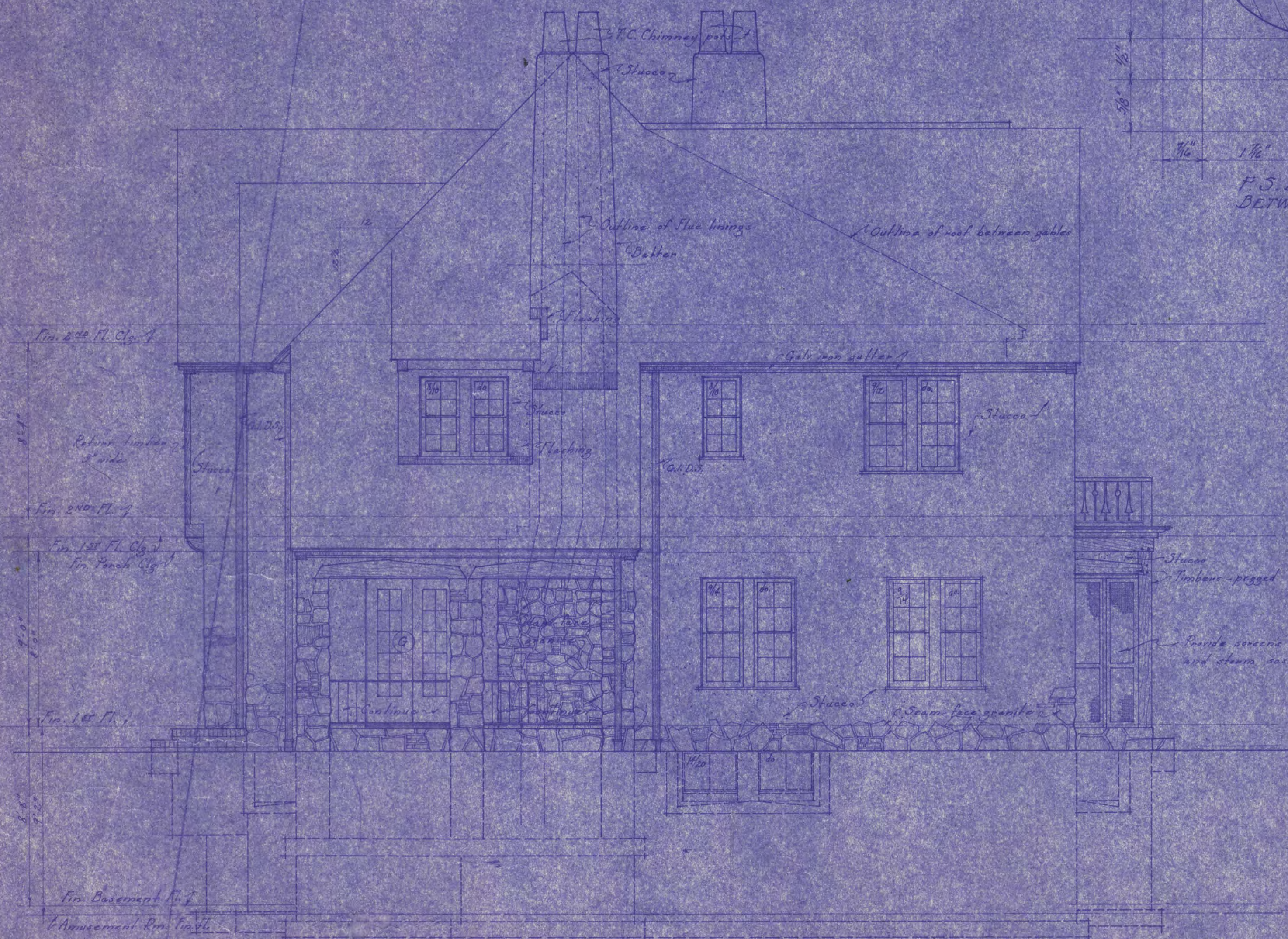
RESIDENCE
FOR
DR. C. B. LEWIS
ST. CLOUD MINN.

LOUIS C. PINAULT ARCHITECT
ST. CLOUD MINN.
DRAWING NO. 138 B-7
DATE OCT. 7, 1925

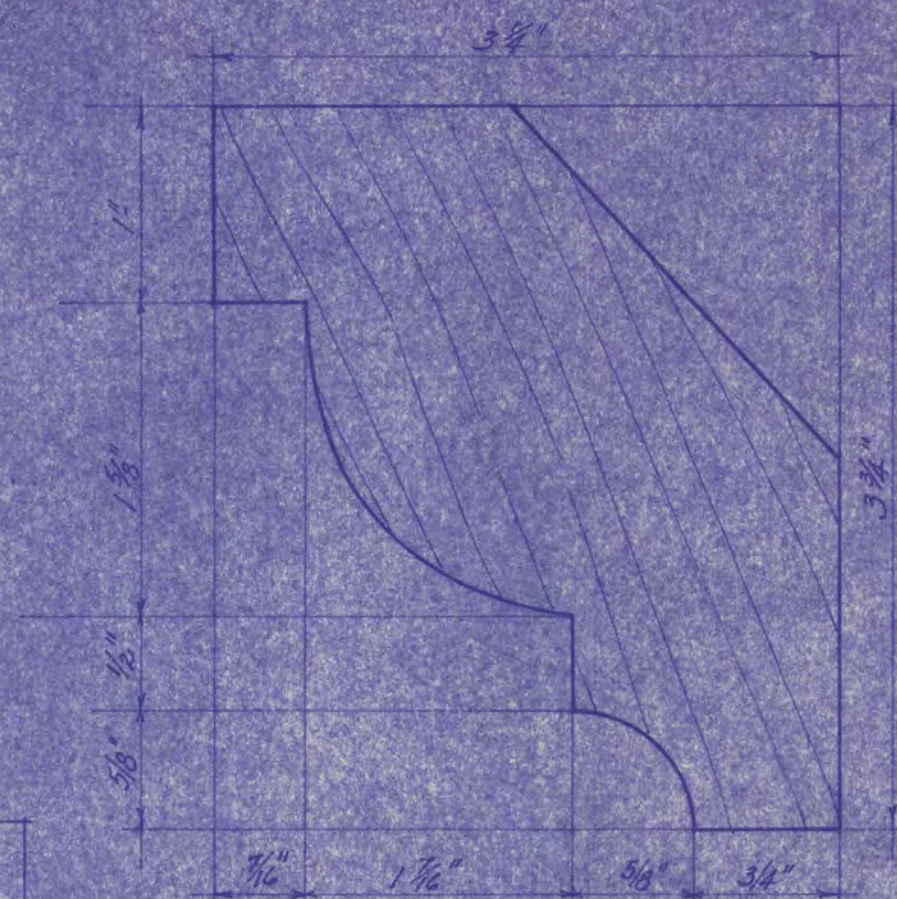


TWO INCH SCALE DETAIL OF MANTEL
 IN AMUSEMENT ROOM
 LEWIS RESIDENCE
 ST. CLOUD, MINN.

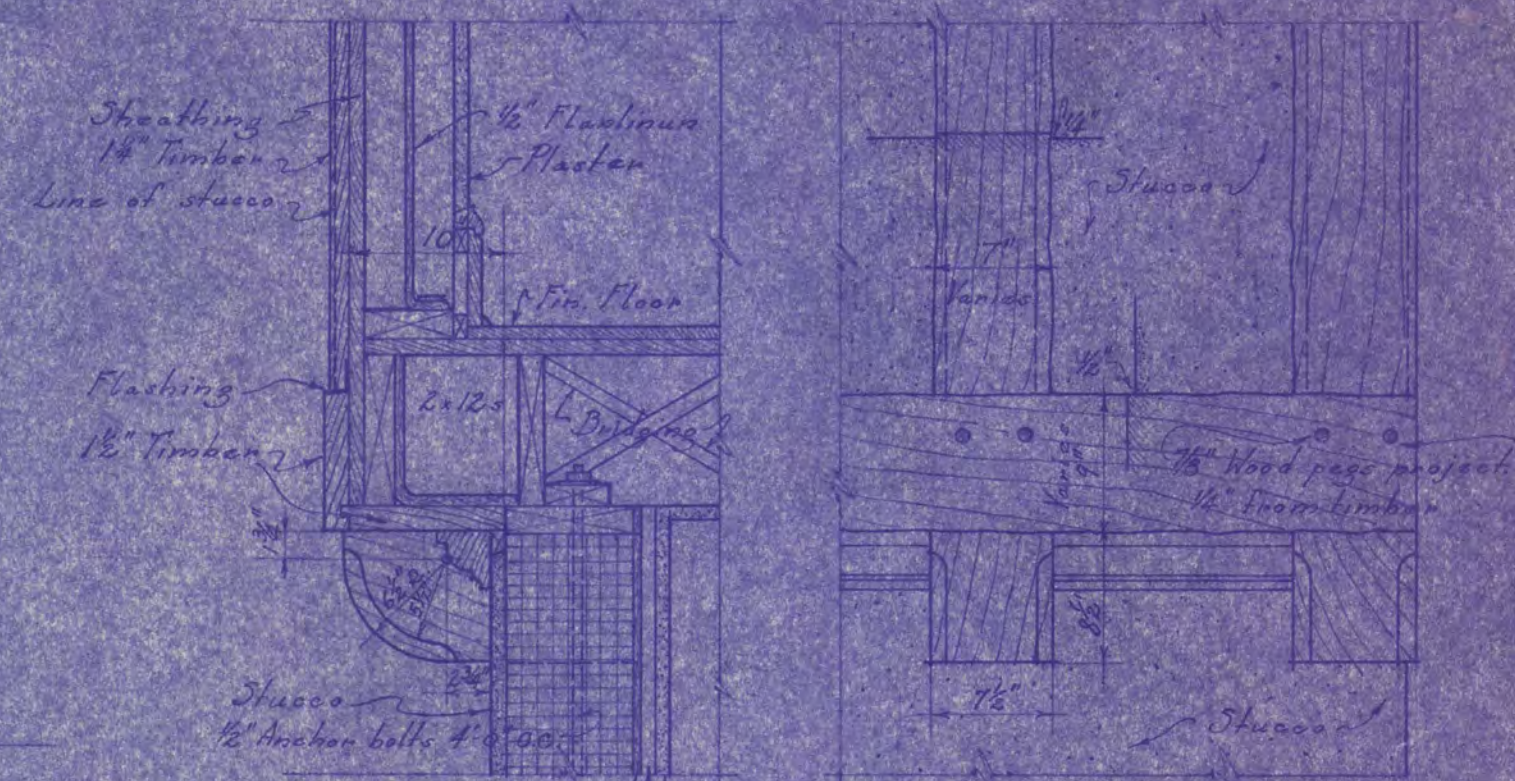
LOUIS C. PINAULT ARCHITECT
 ST. CLOUD MINN.
 DRAWING NO. 138 B-11 1/2
 DATE JAN. 6, 1926
 D.J.S.



SOUTH ELEVATION
Scale: 1/2"=1'-0"

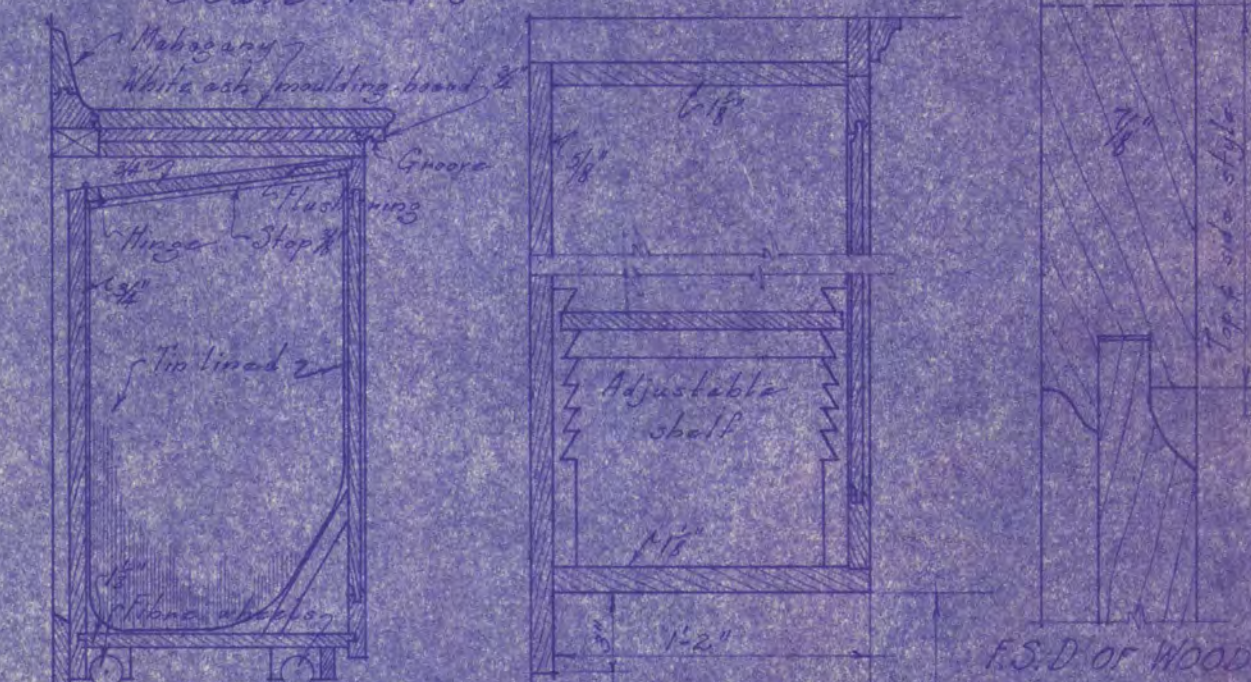


F.S.D. OF MOULD
BETWEEN BRACKETS



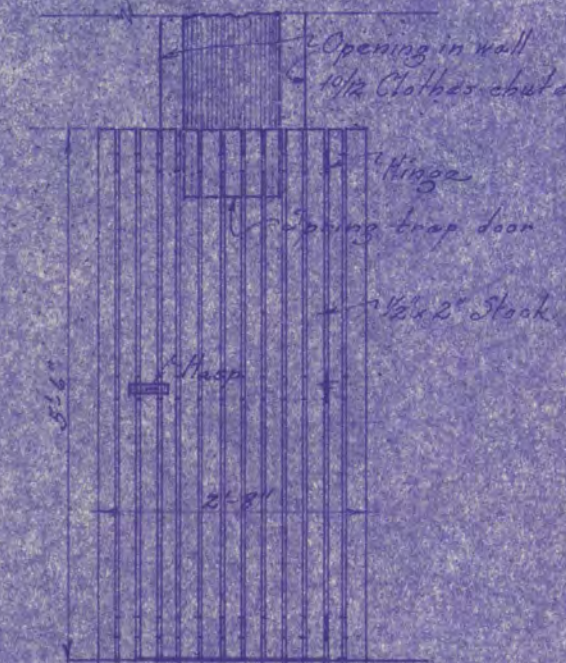
SECTION PART ELEVATION

DETAIL OF 2ND FLOOR PROJECTION
TIMBERED GABLE
Scale: 1"=1'-0"

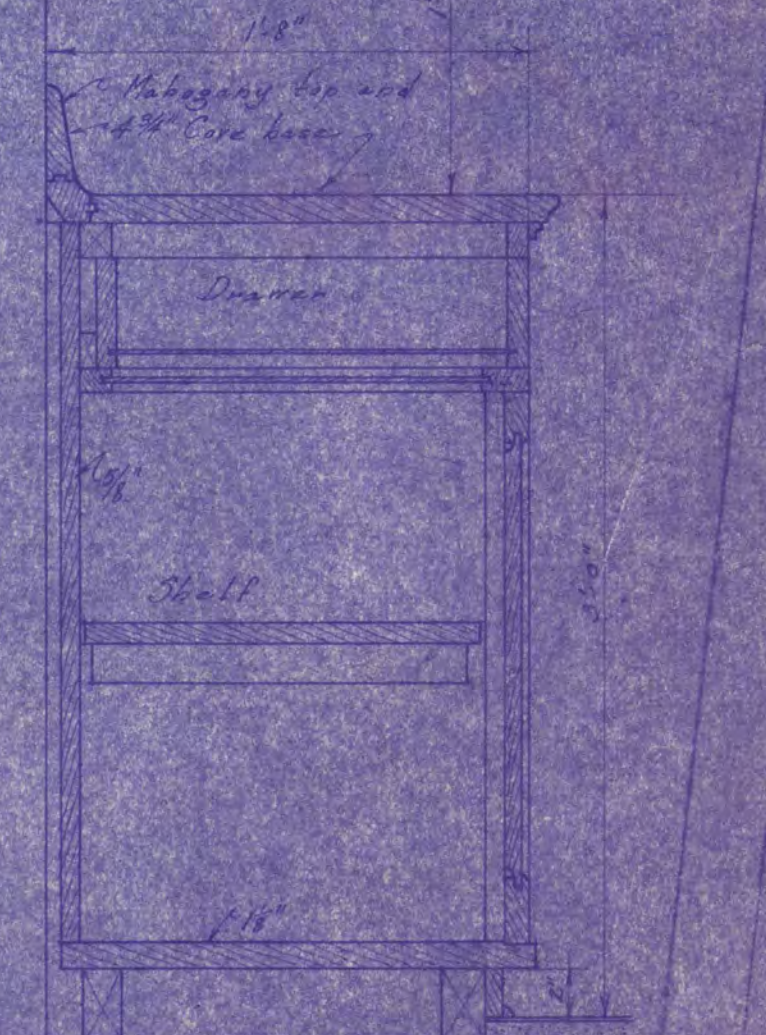


DETAIL OF BIN FOR
FLOUR & SUGAR
Scale: 1"=1'-0"

F.S.D. OF WOOD
PANEL DOORS



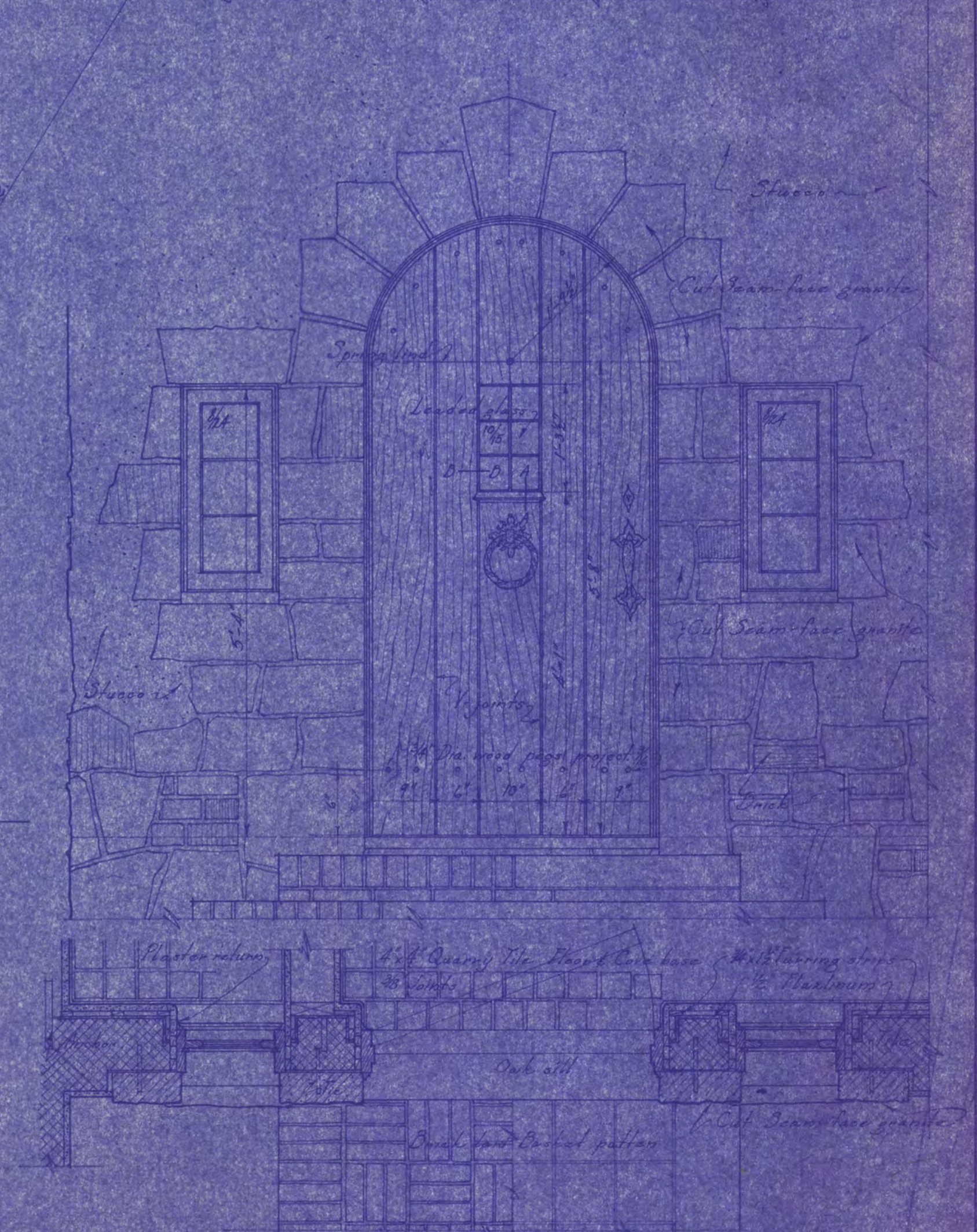
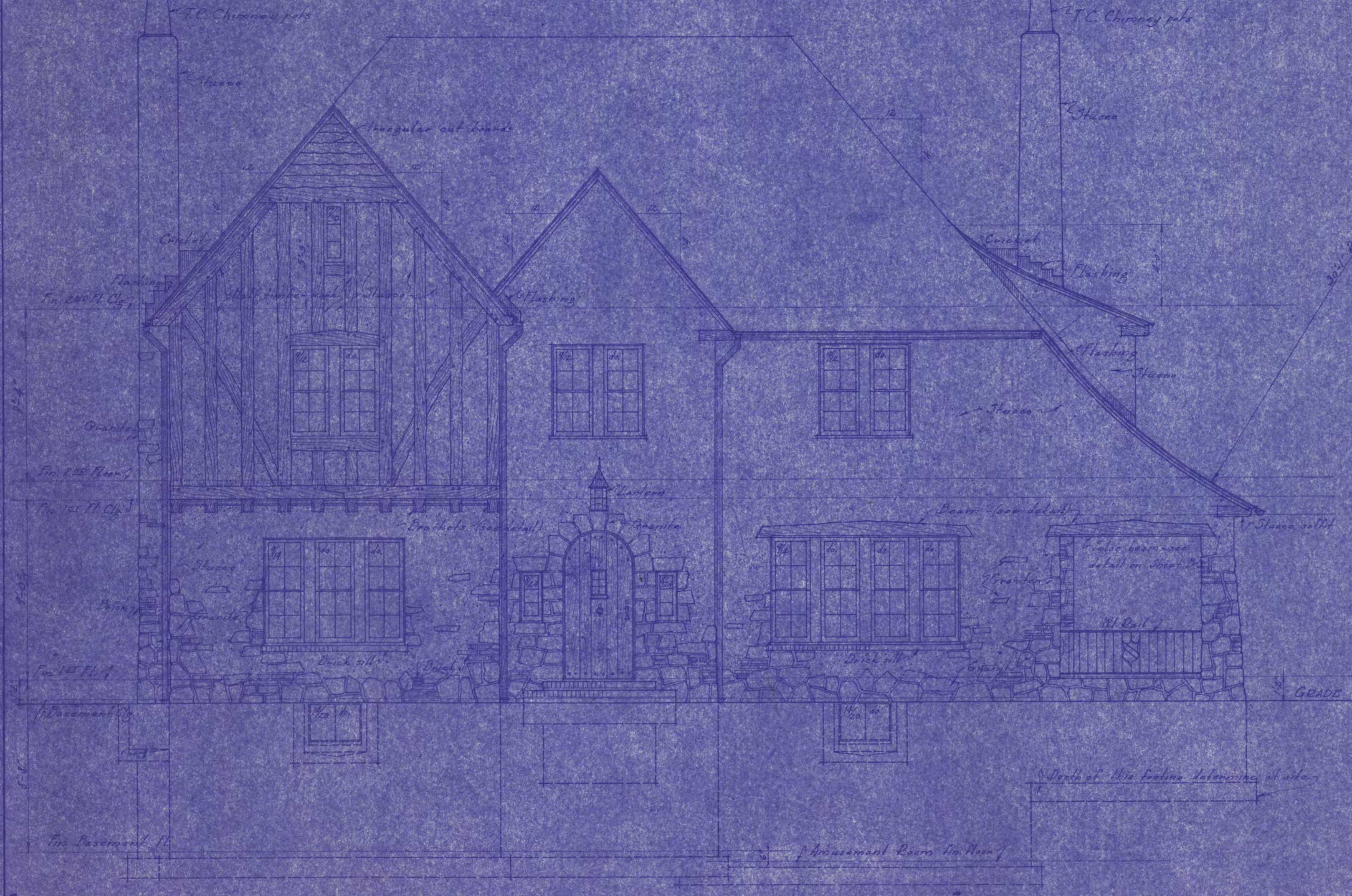
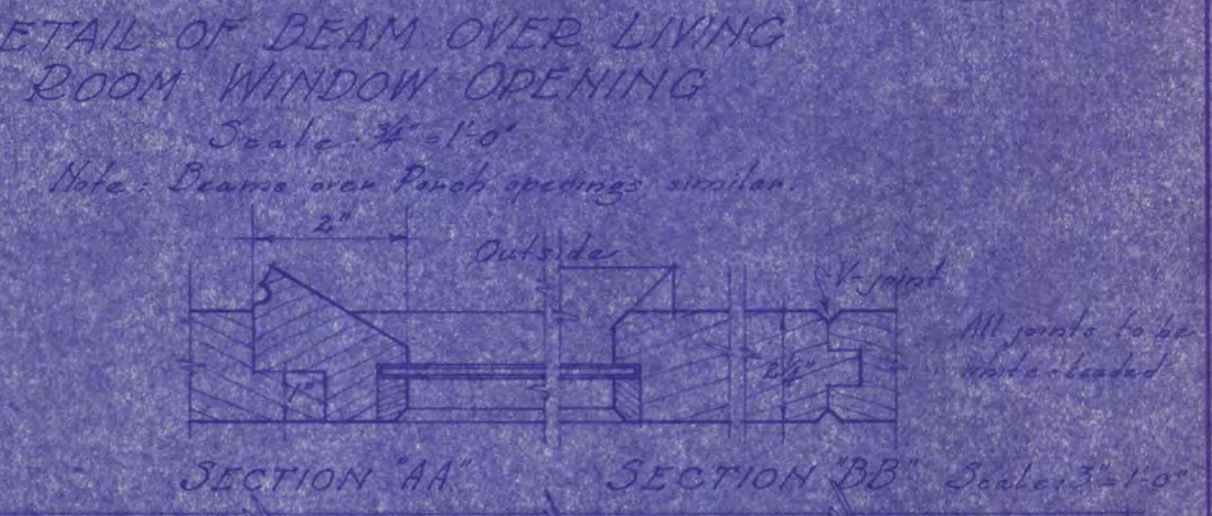
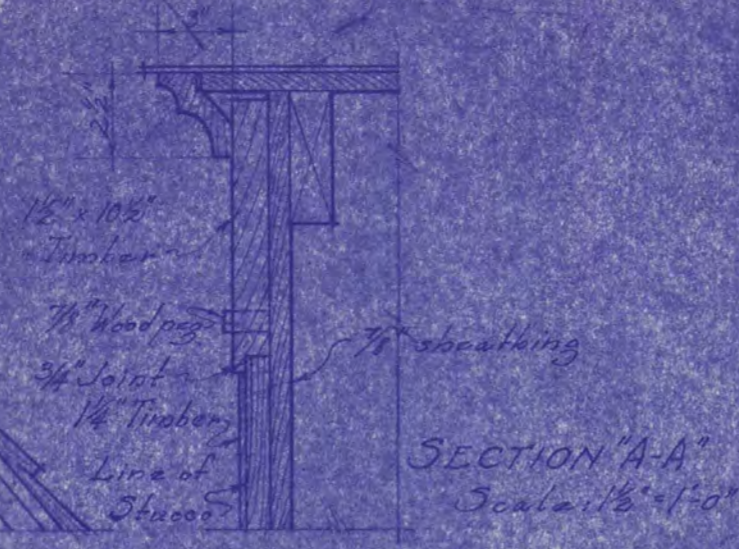
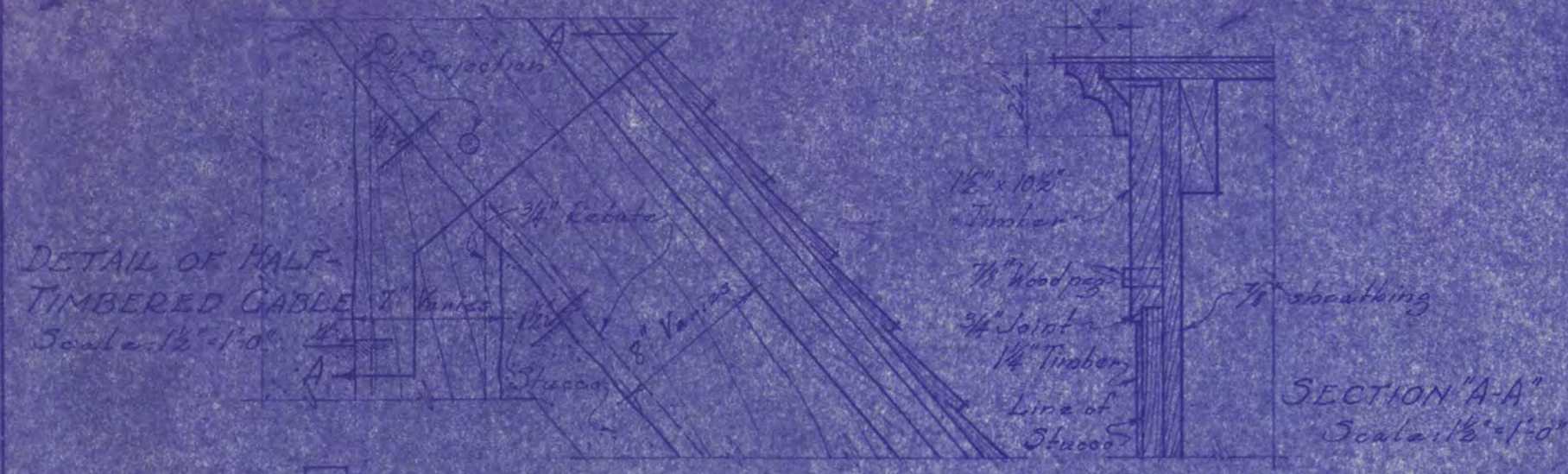
CLOTHES HAMPER
Scale: 1/2"=1'-0"



TYPICAL SECTION OF
KITCHEN CUPBOARD - Scale: 1/2\"/>

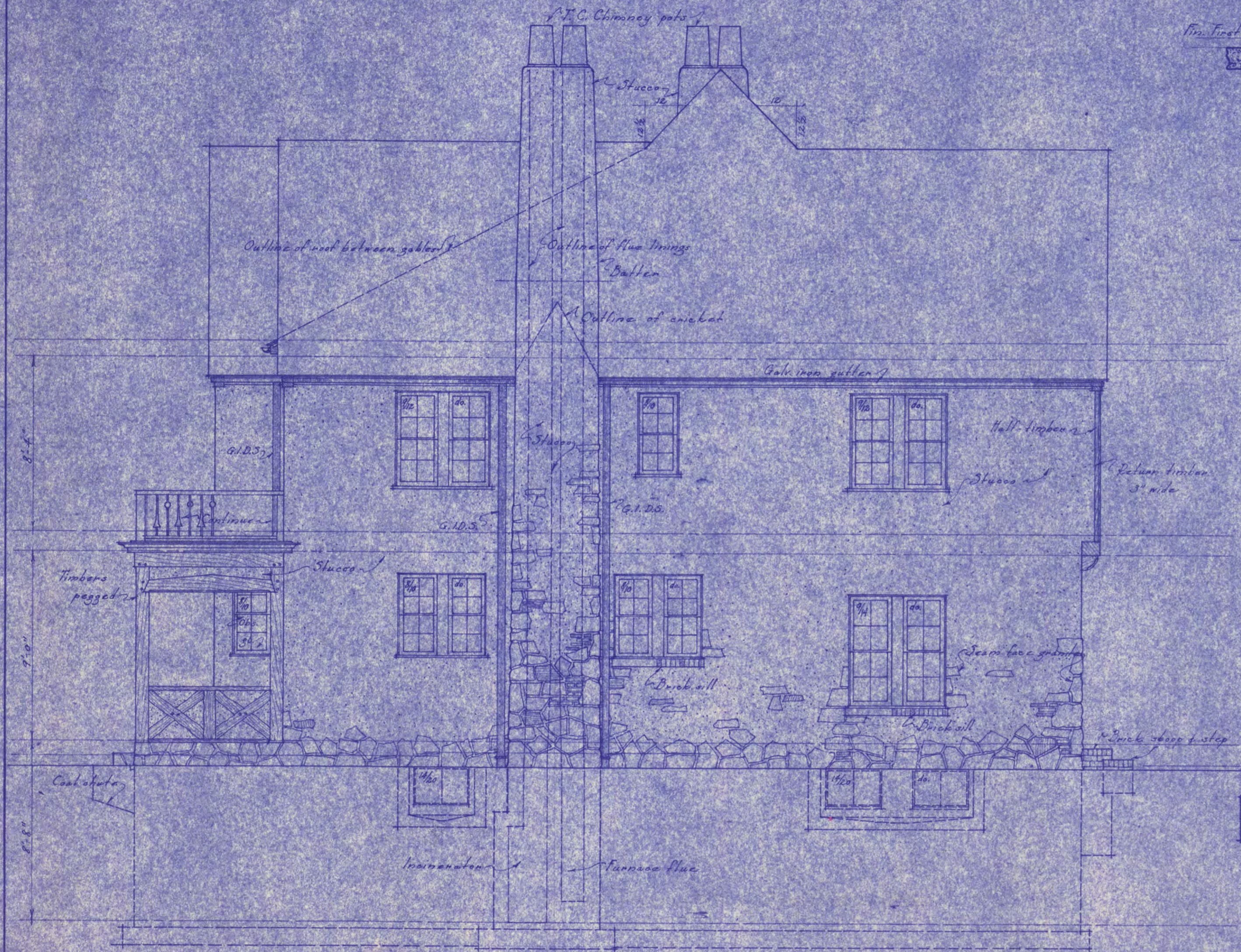
RESIDENCE
FOR
DR. C. B. LEWIS
ST. CLOUD MINN.

LOUIS C. PINAULT ARCHITECT
ST. CLOUD MINN.
DRAWING NO. 138 B-2
DATE OCT. 7 1925

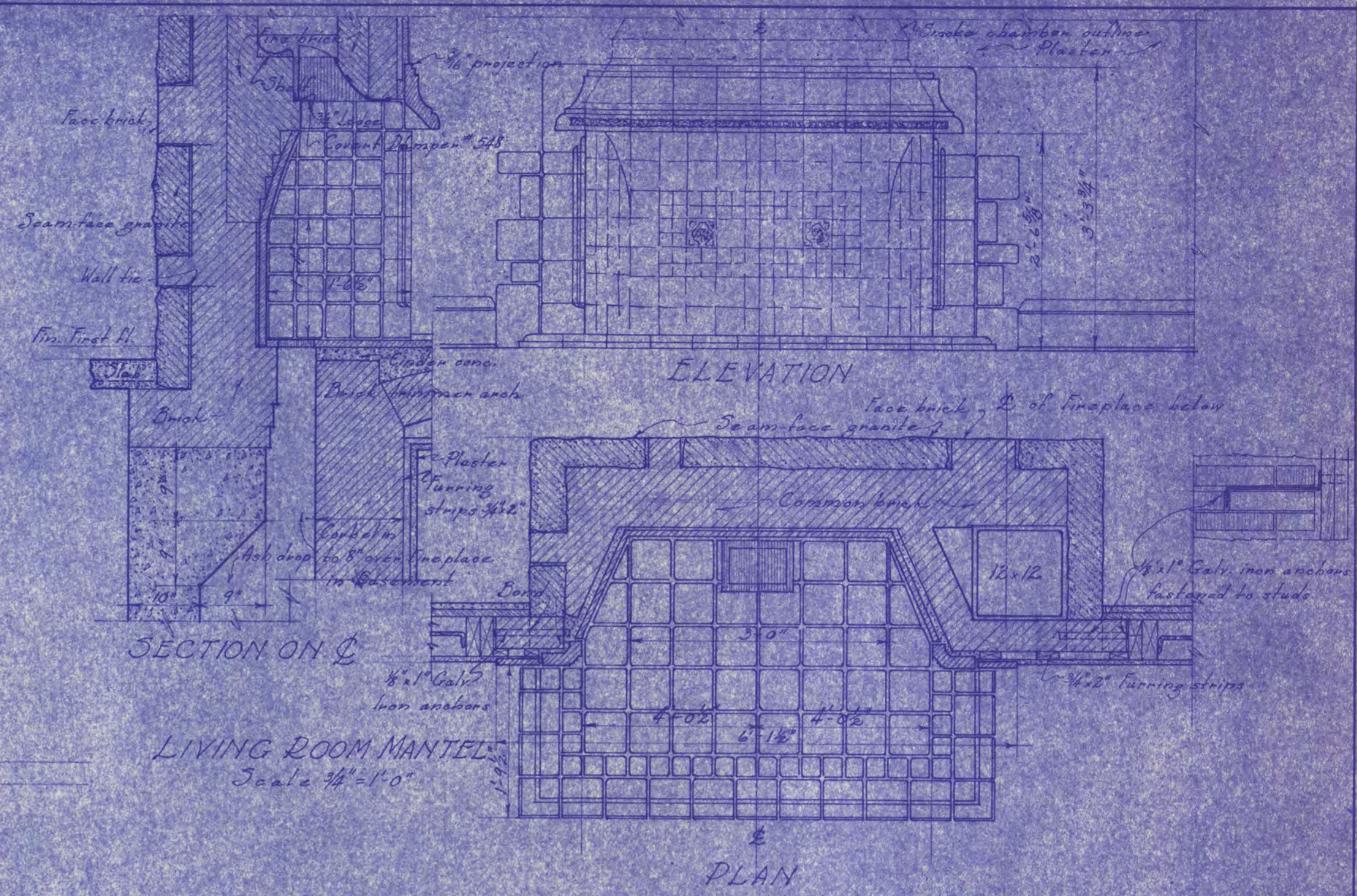


RESIDENCE
FOR
DR. C. B. LEWIS
ST. CLOUD MINN.

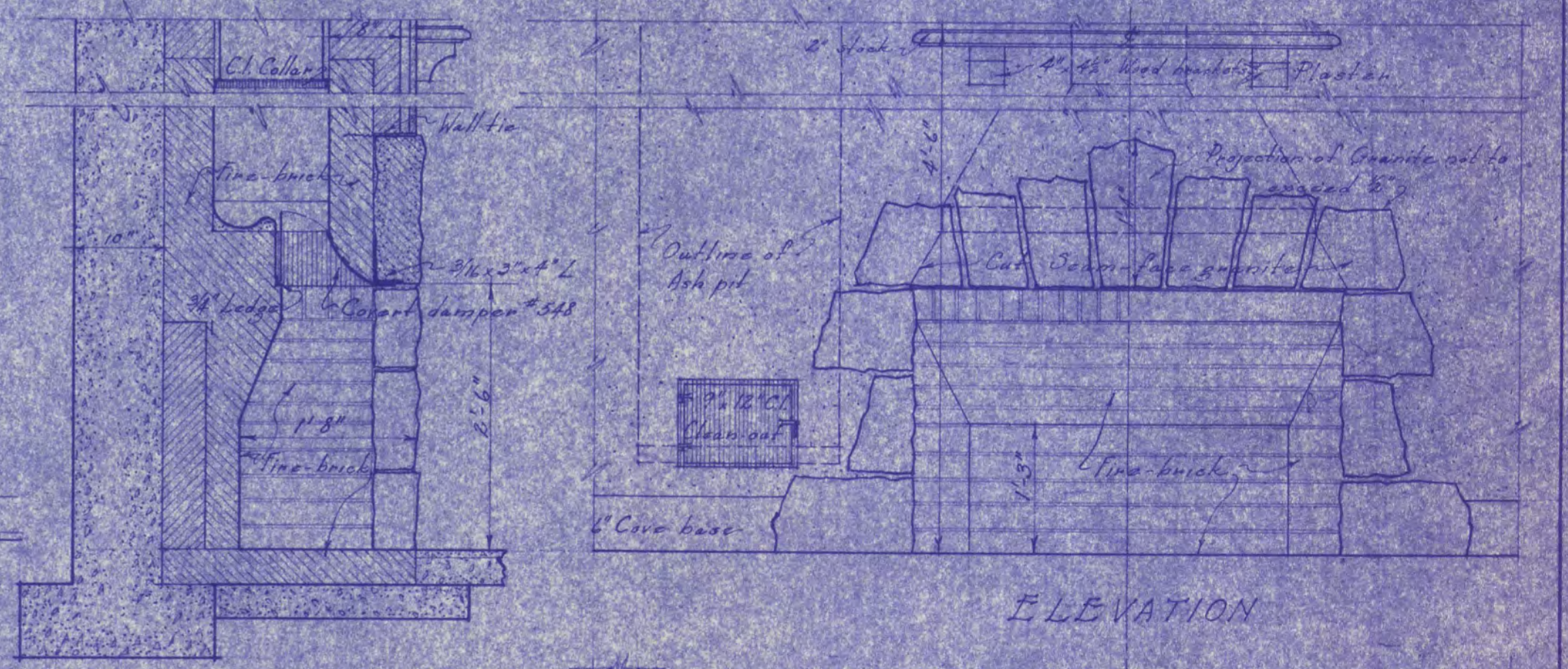
LOUIS G. PINAULT ARCHITECT
ST. CLOUD MINN.
DRAWING NO. 136 B-1
DATE OCT 7, 1925



NORTH ELEVATION
Scale: 1/4" = 1'-0"



LIVING ROOM MANTEL
Scale: 1/4" = 1'-0"



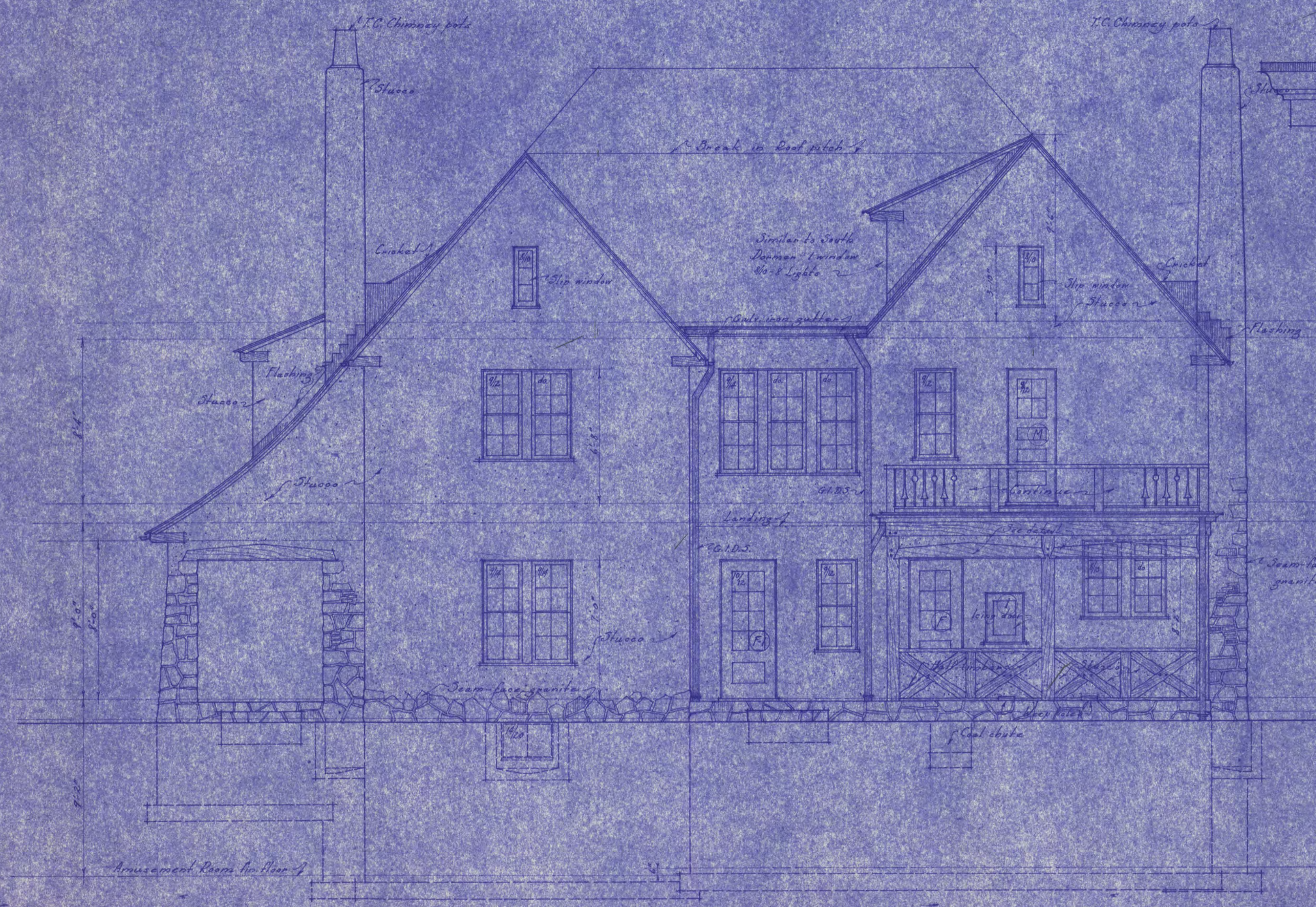
SECTION ON Q
AMUSEMENT ROOM
MANTEL
Scale: 1/4" = 1'-0"

ELEVATION

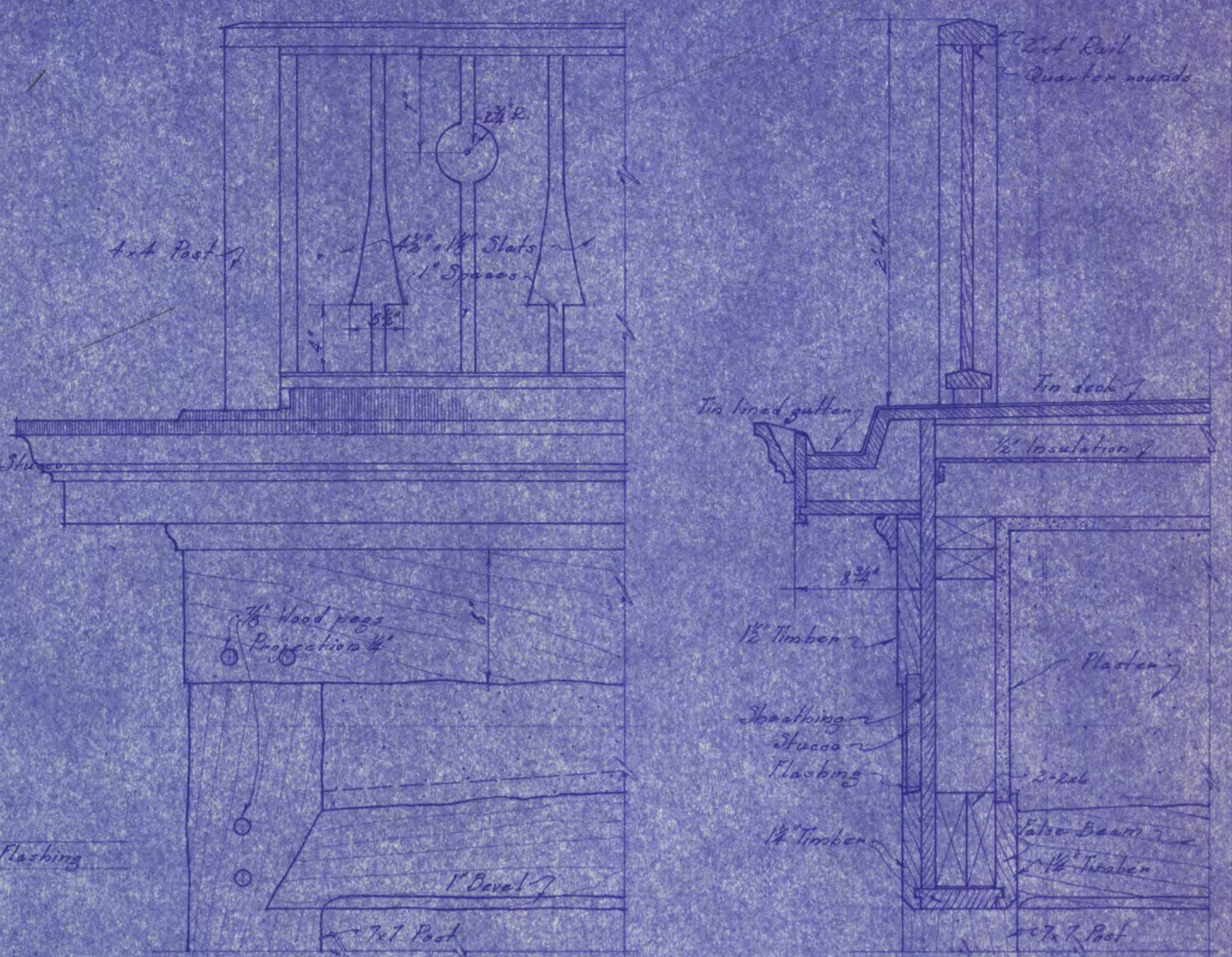
PLAN

RESIDENCE
FOR
DR. C. B. LEWIS
ST. CLOUD MINN.

LOUIS C. PINAULT ARCHITECT
ST. CLOUD MINN.
DRAWING NO. 138 B-4
DATE OCT 7, 1925



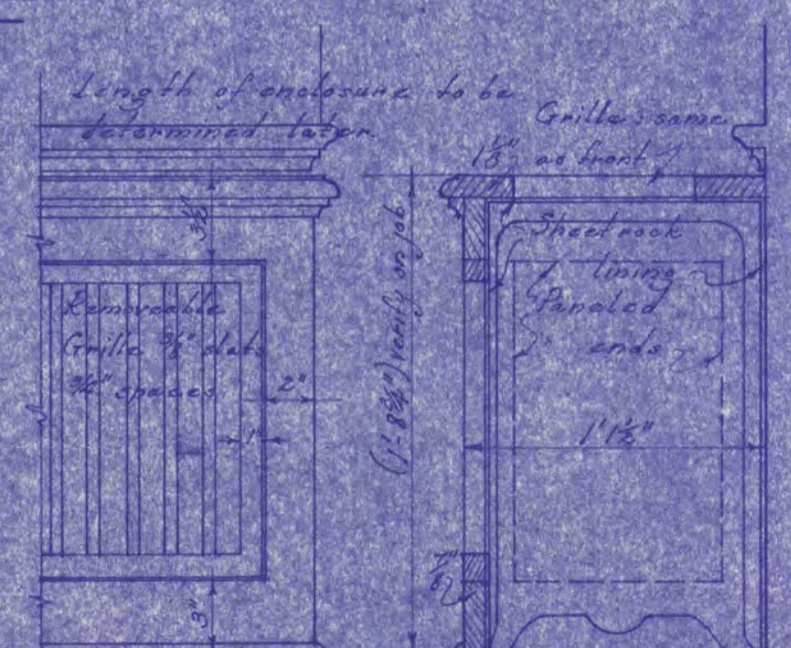
EAST ELEVATION
Scale: 1/4" = 1'-0"



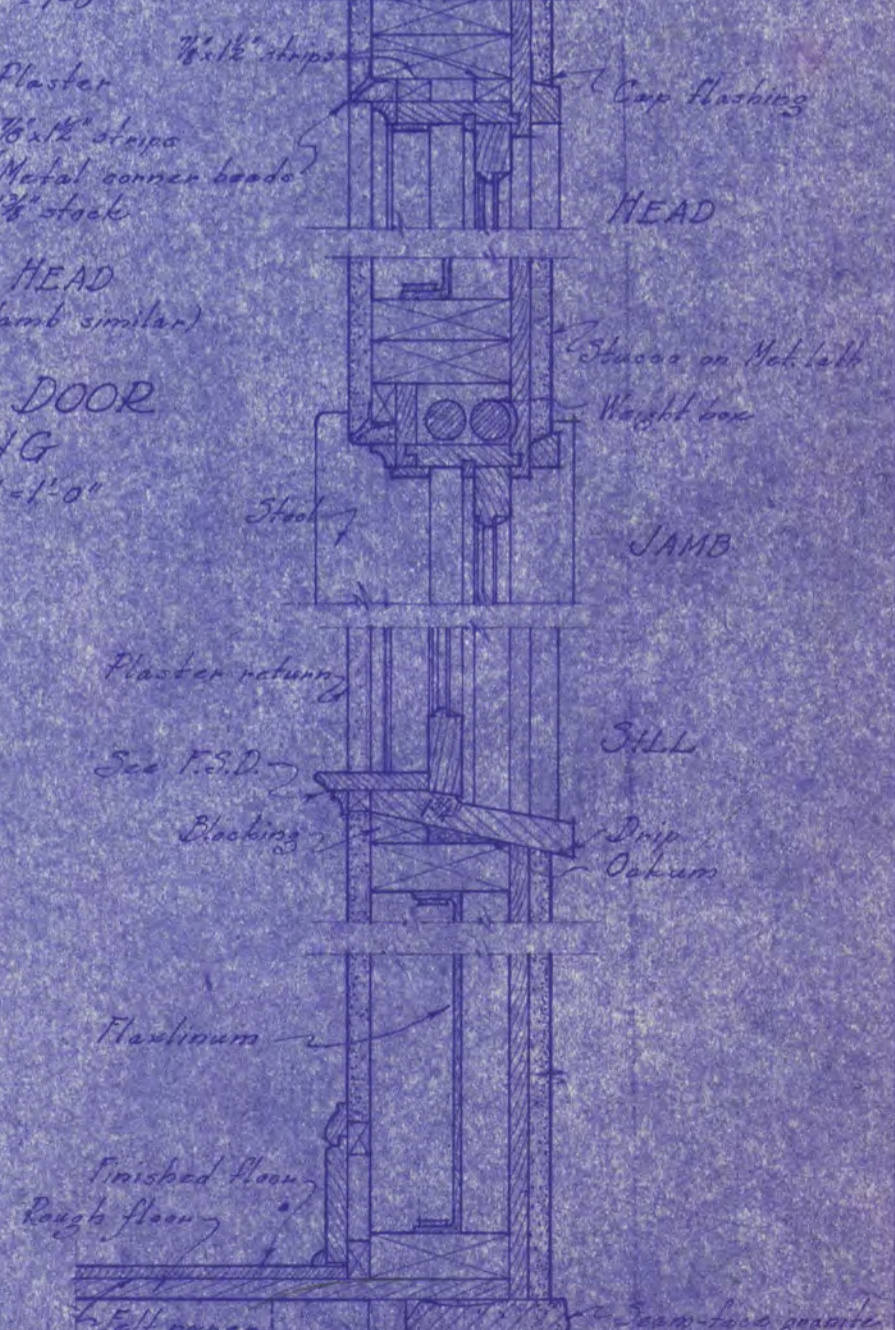
PART ELEVATION
SECTION
DETAIL OF DECK OVER REAR PORCH
Scale: 1/8" = 1'-0"



DETAIL OF DOOR FRAMING
Scale: 1/8" = 1'-0"



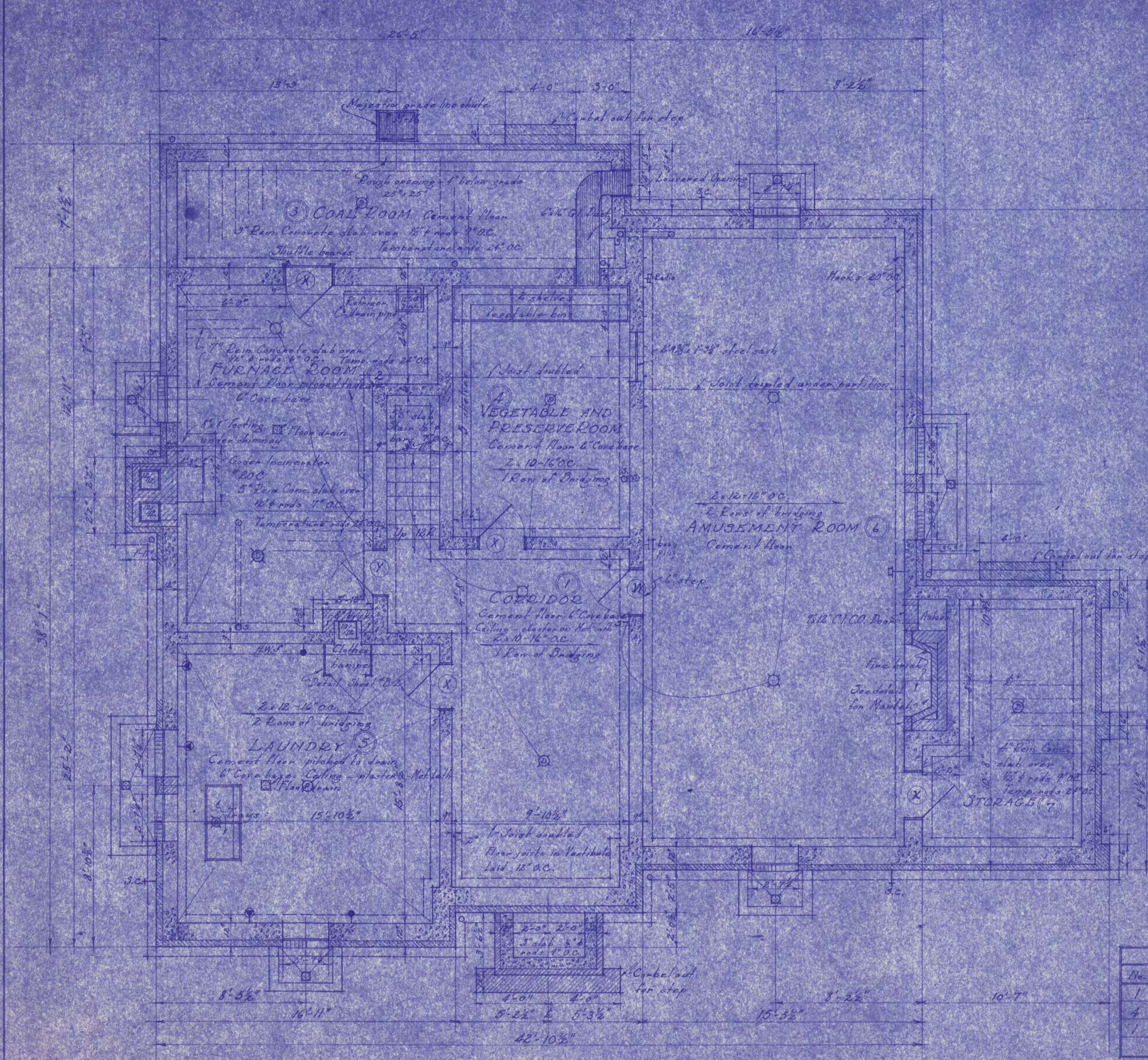
PART ELEVATION
SECTION
RADIATOR ENCLOSURE - ROOM 103
Scale: 1/8" = 1'-0"



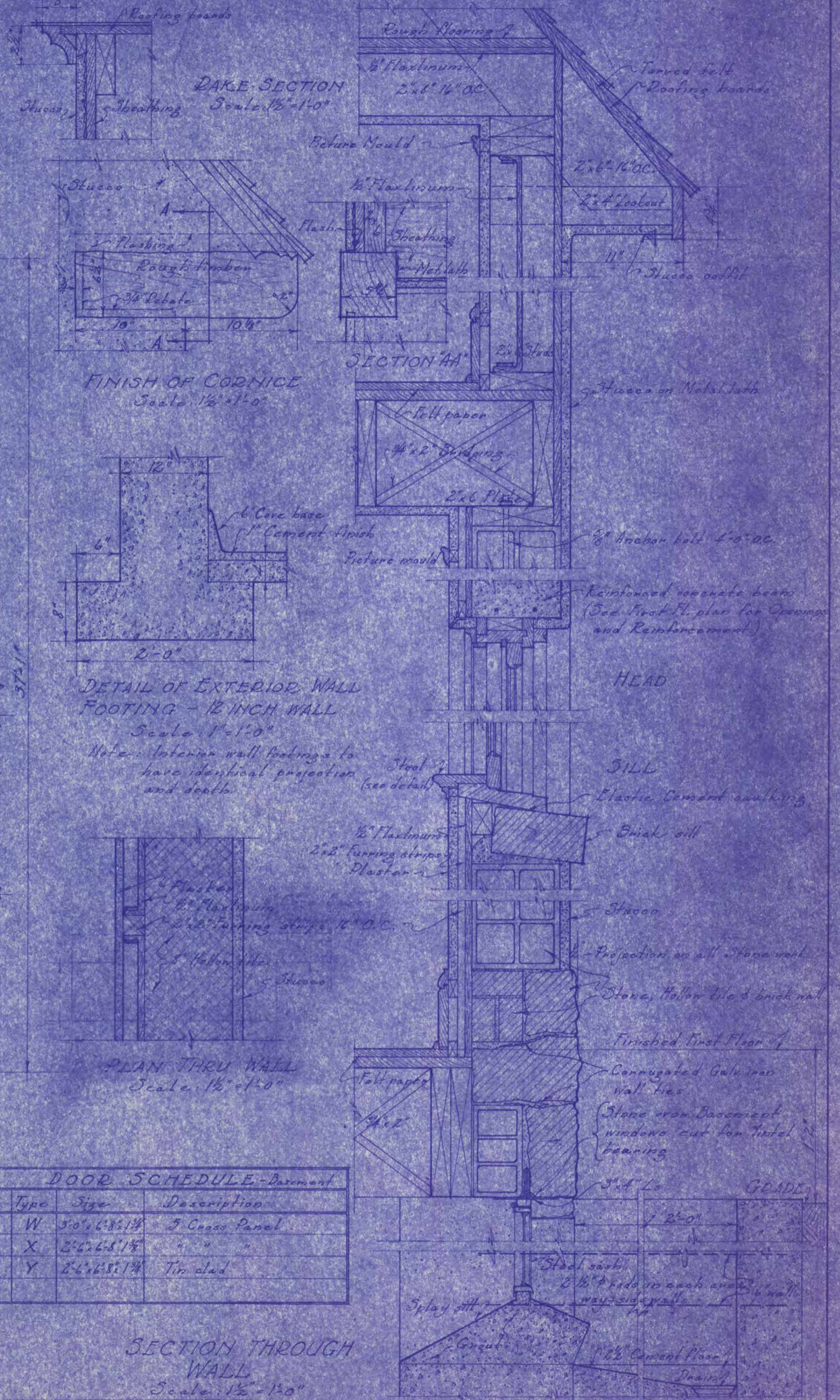
SECTION THRU FRAME WALL
Scale: 1/8" = 1'-0"

RESIDENCE
FOR
DR. C. B. LEWIS
ST. CLOUD MINN.

LOUIS C. PINAULT ARCHITECT
ST. CLOUD MINN.
DRAWING NO. 136 B-3
DATE OCT. 7, 1925



BASEMENT FLOOR PLAN
Scale: 1/4" = 1'-0"



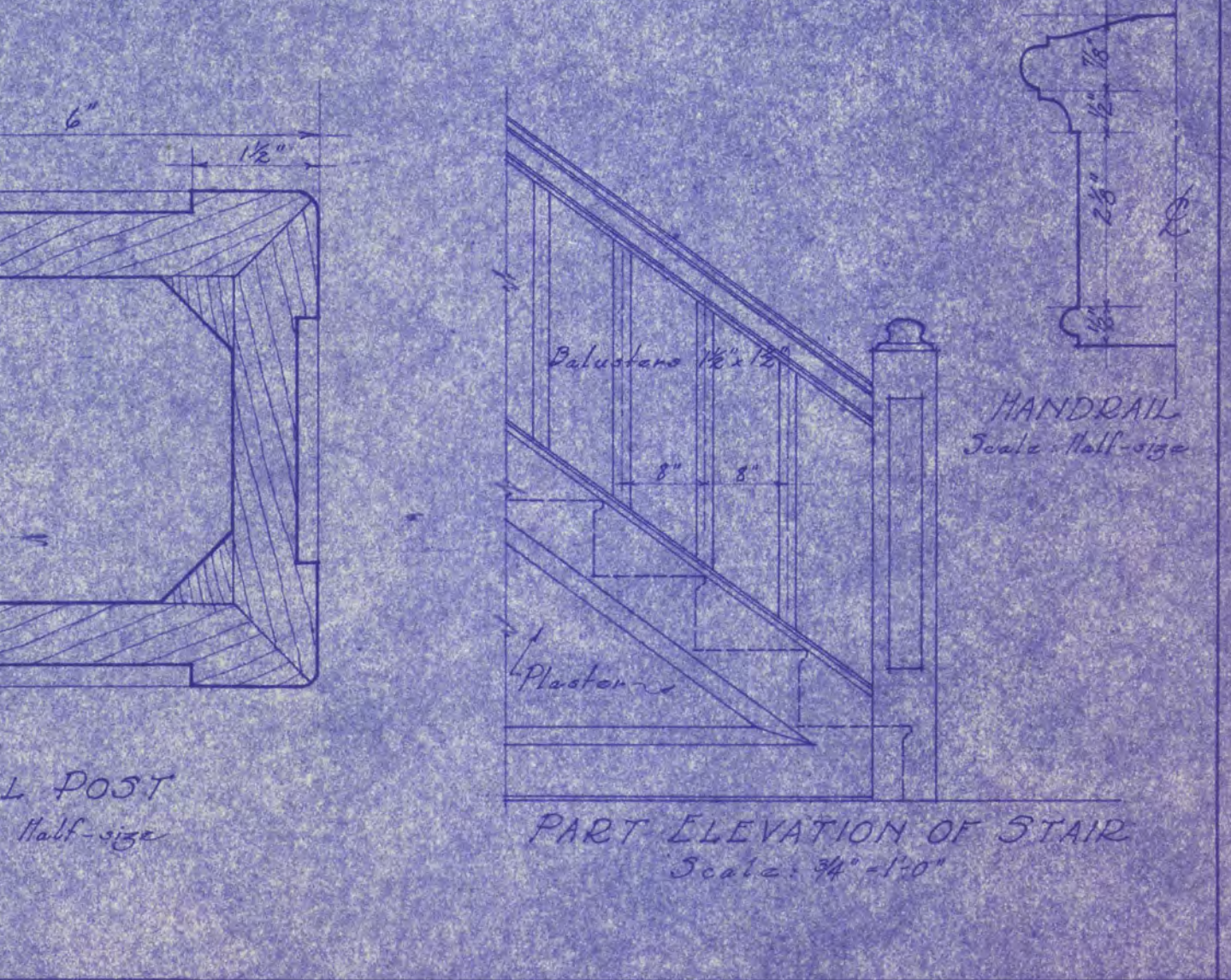
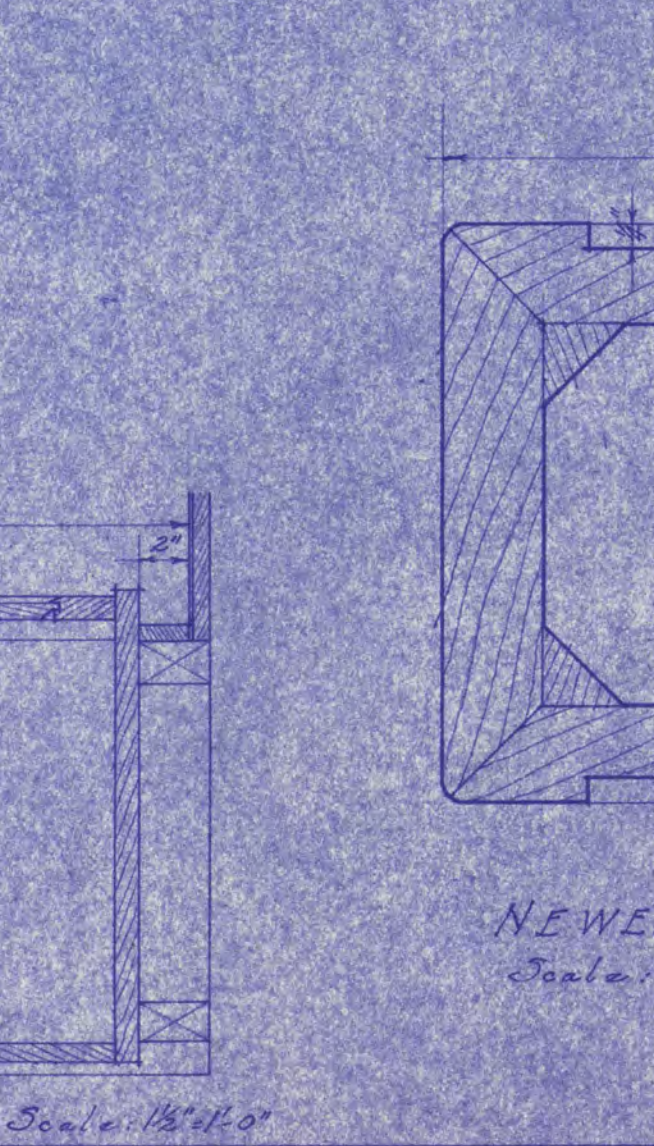
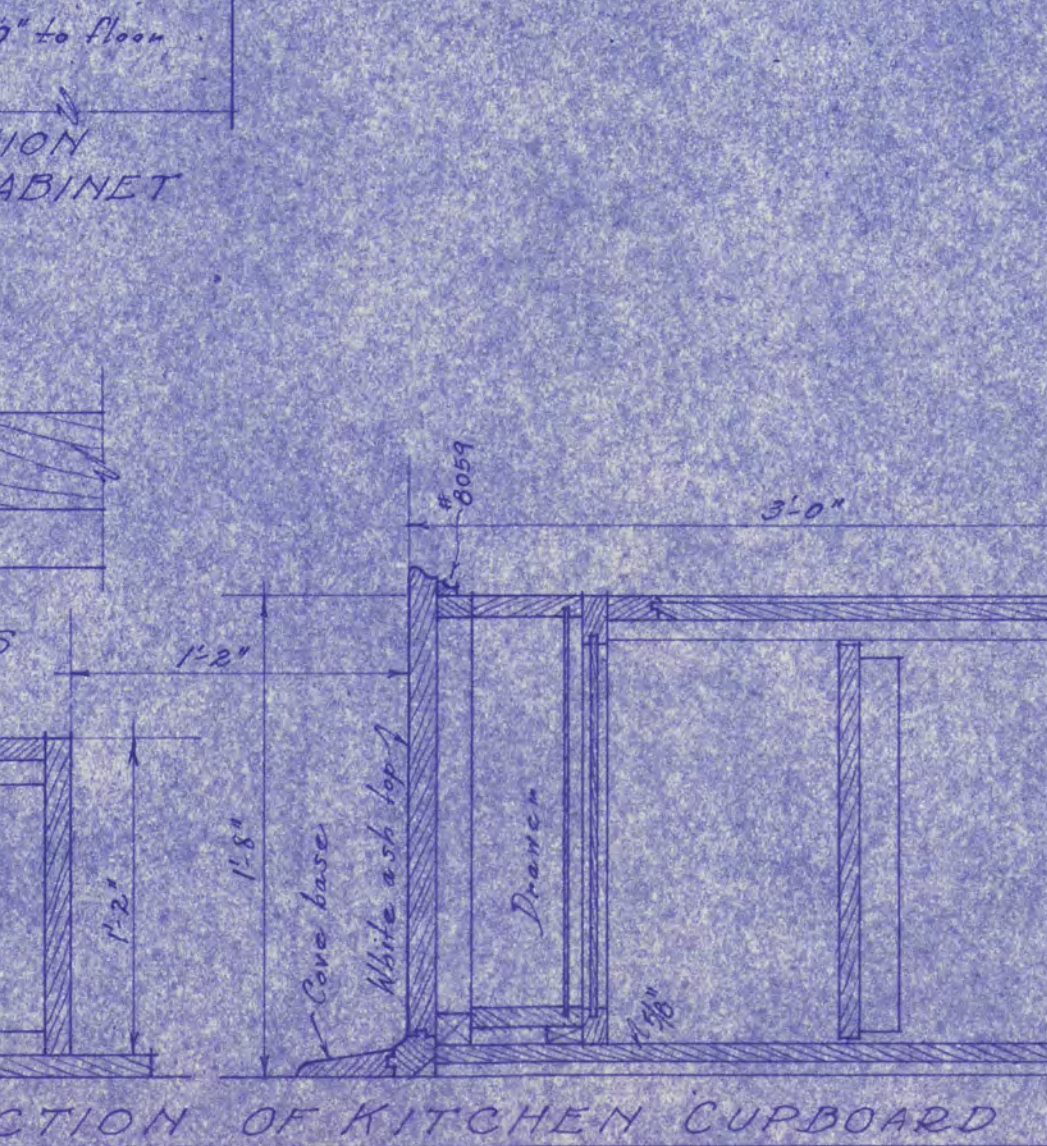
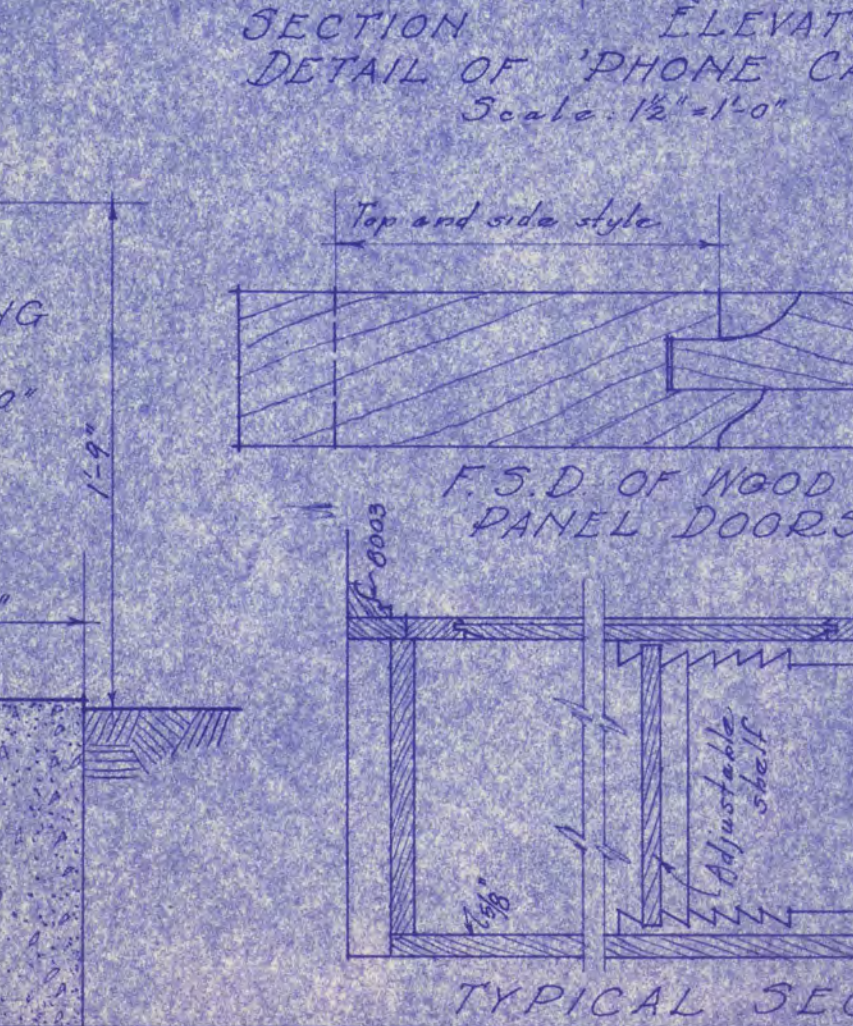
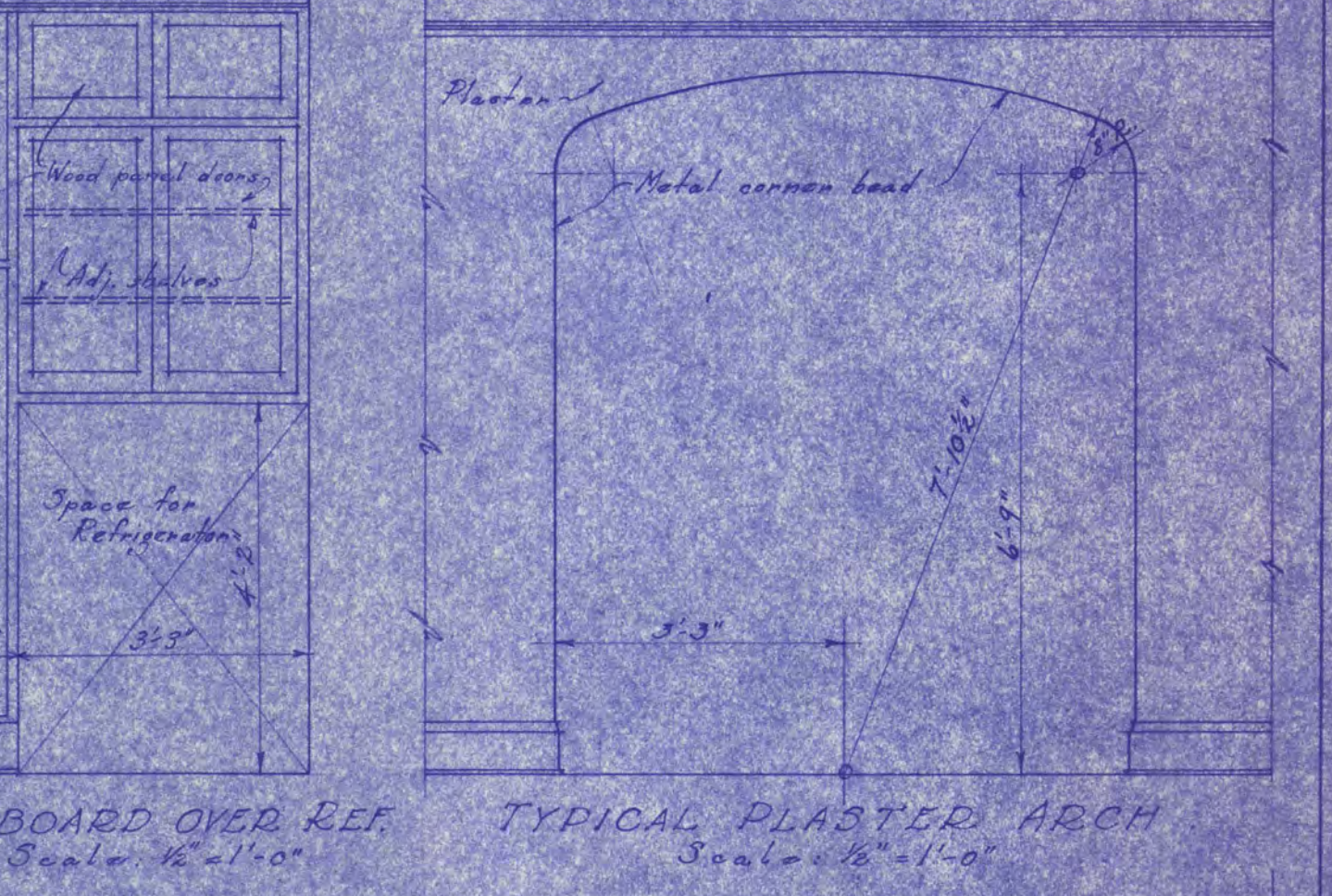
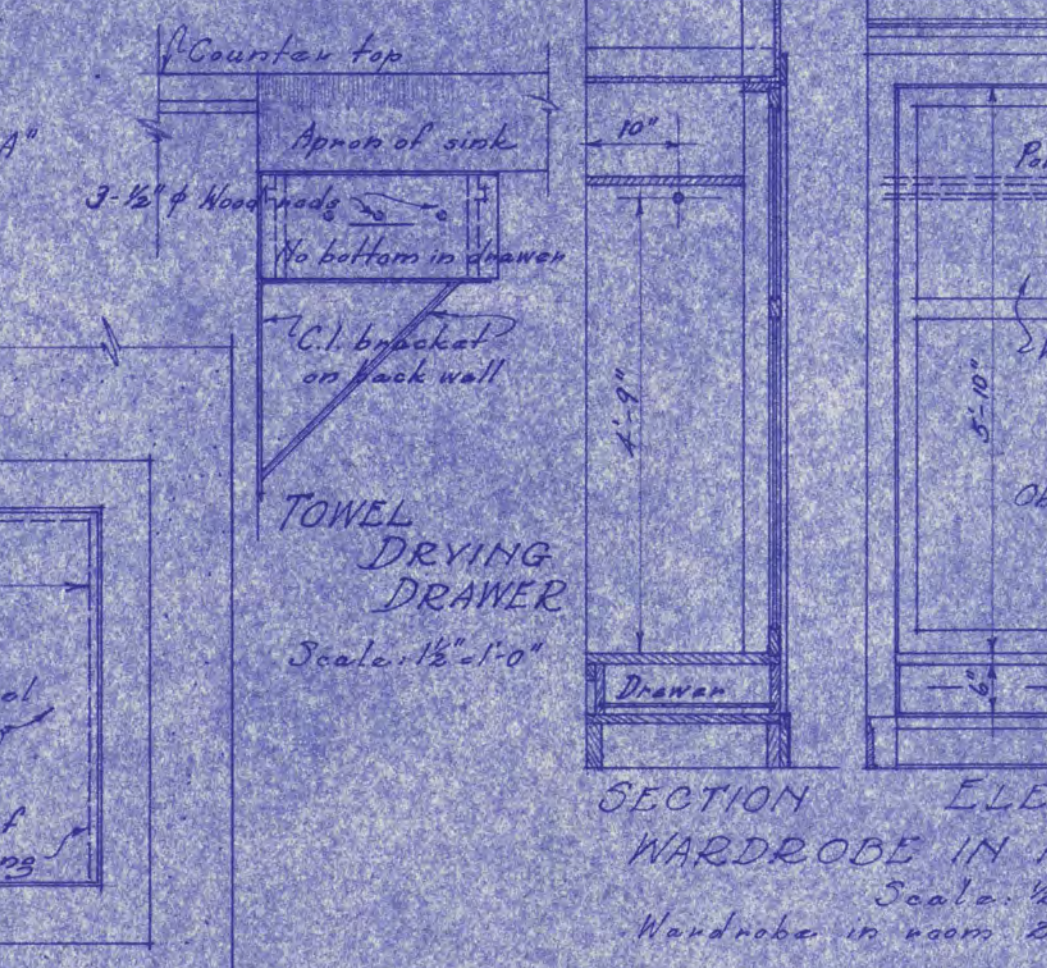
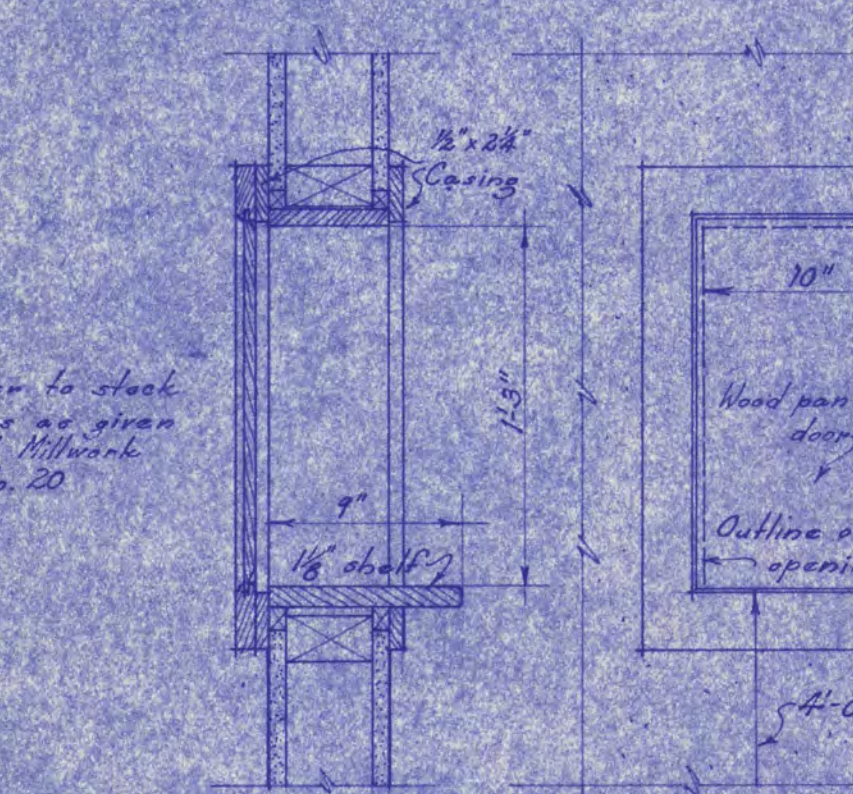
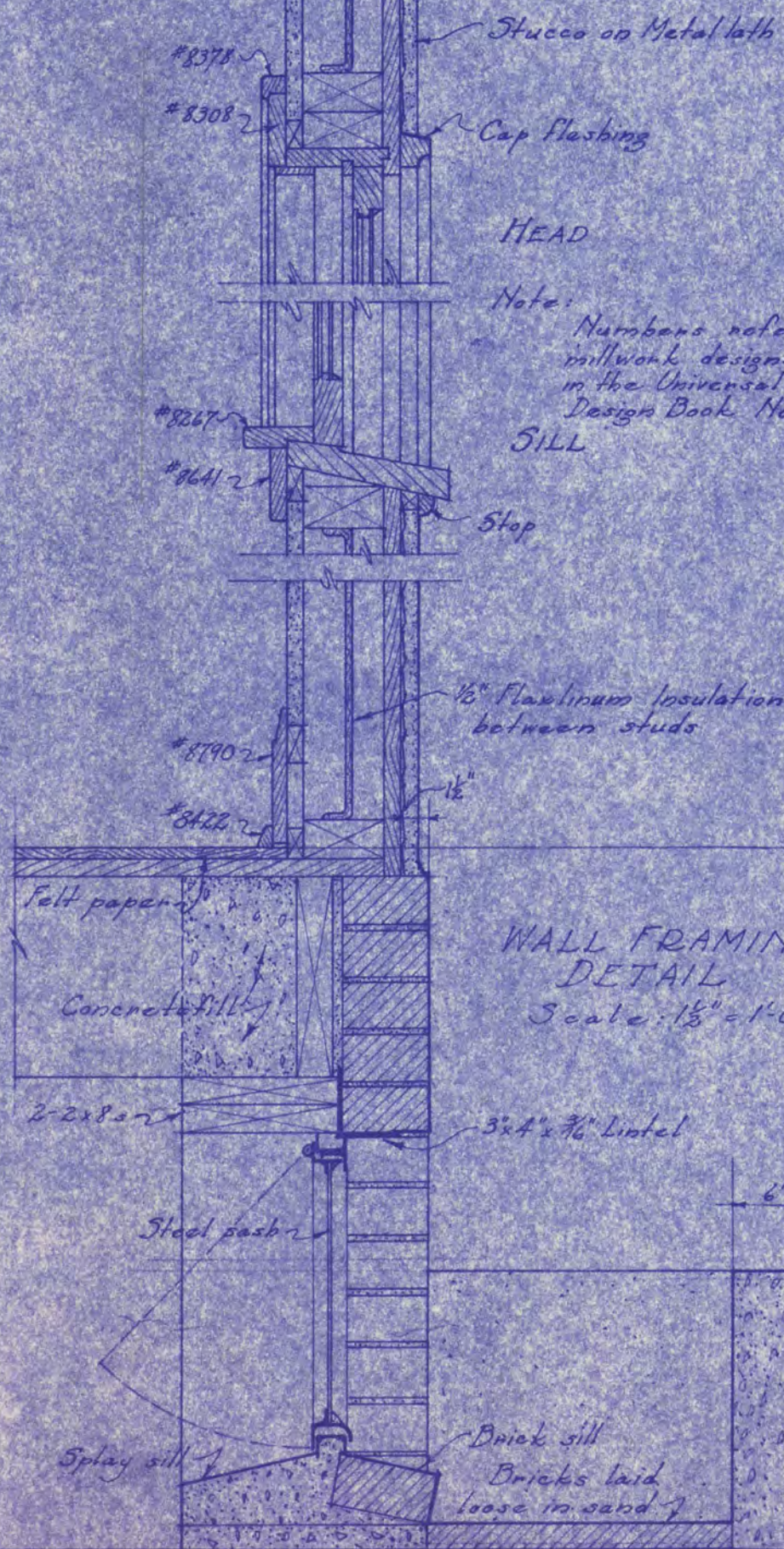
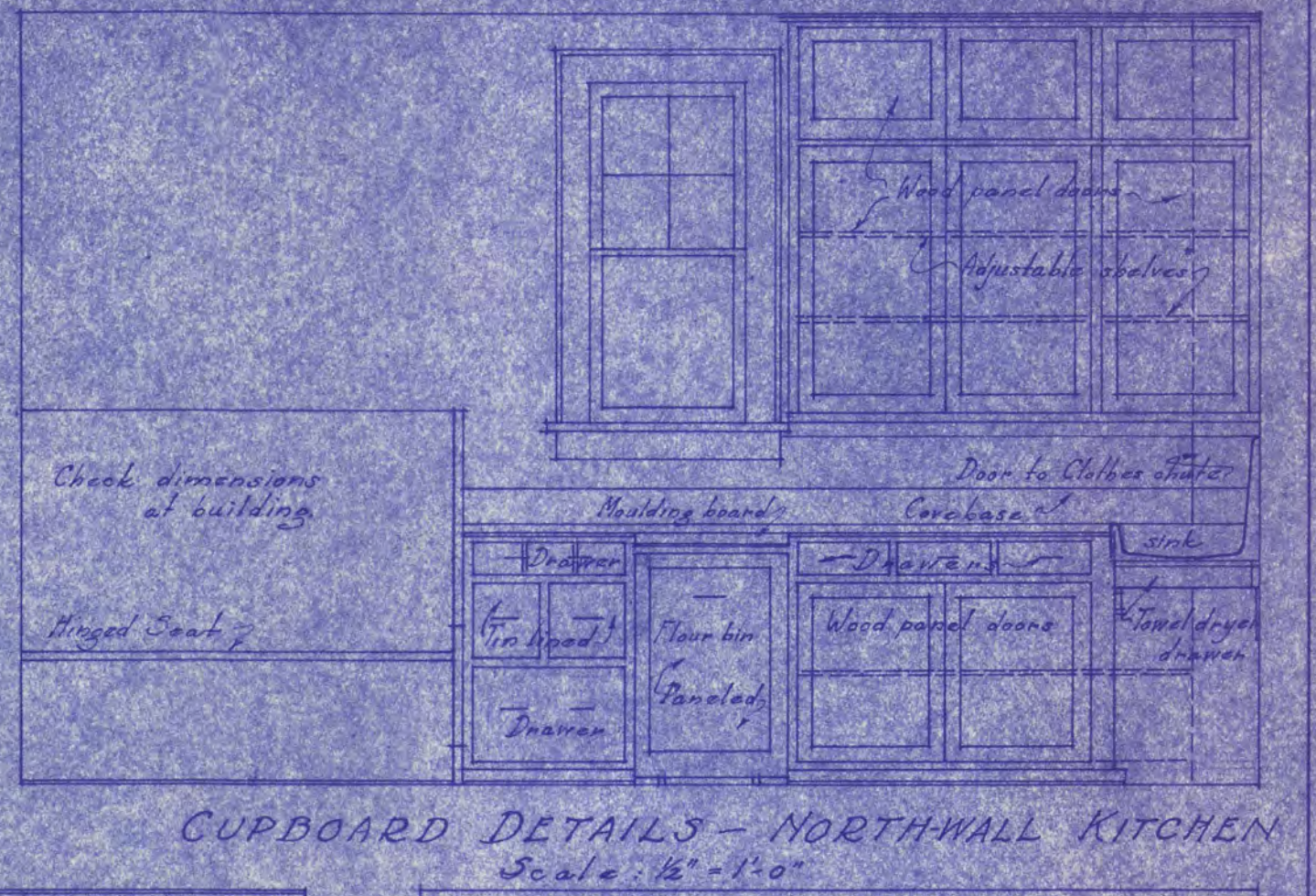
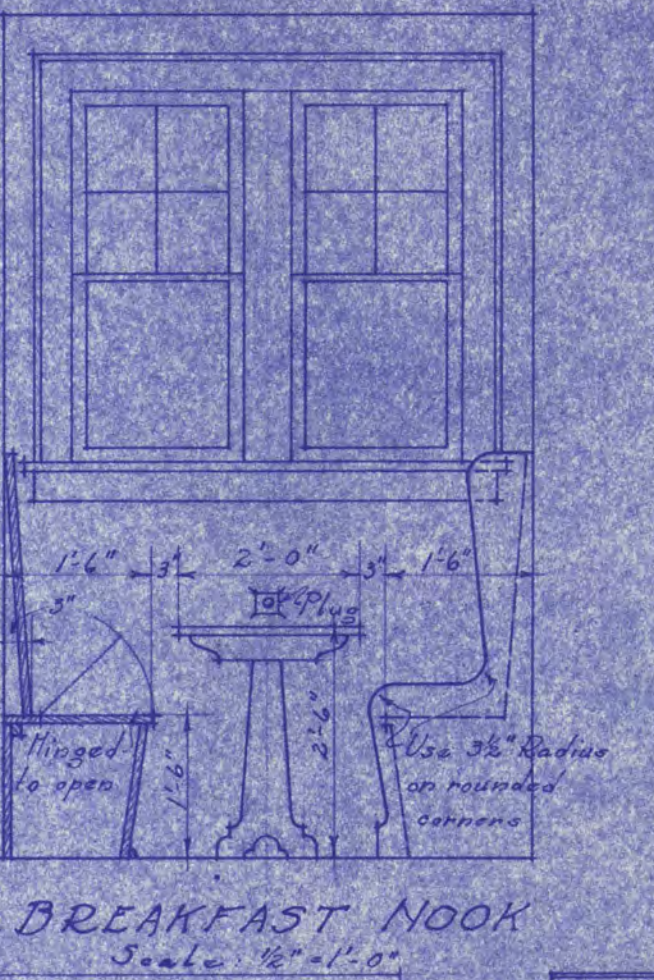
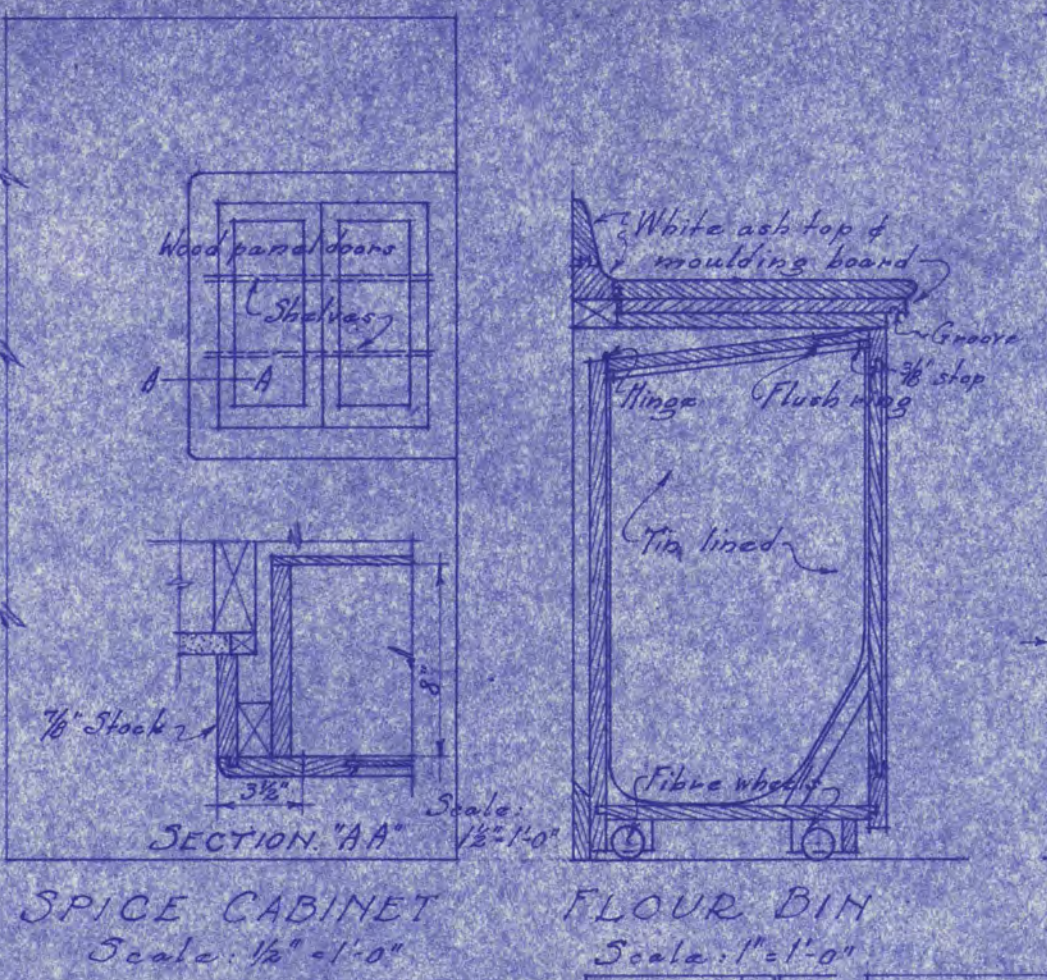
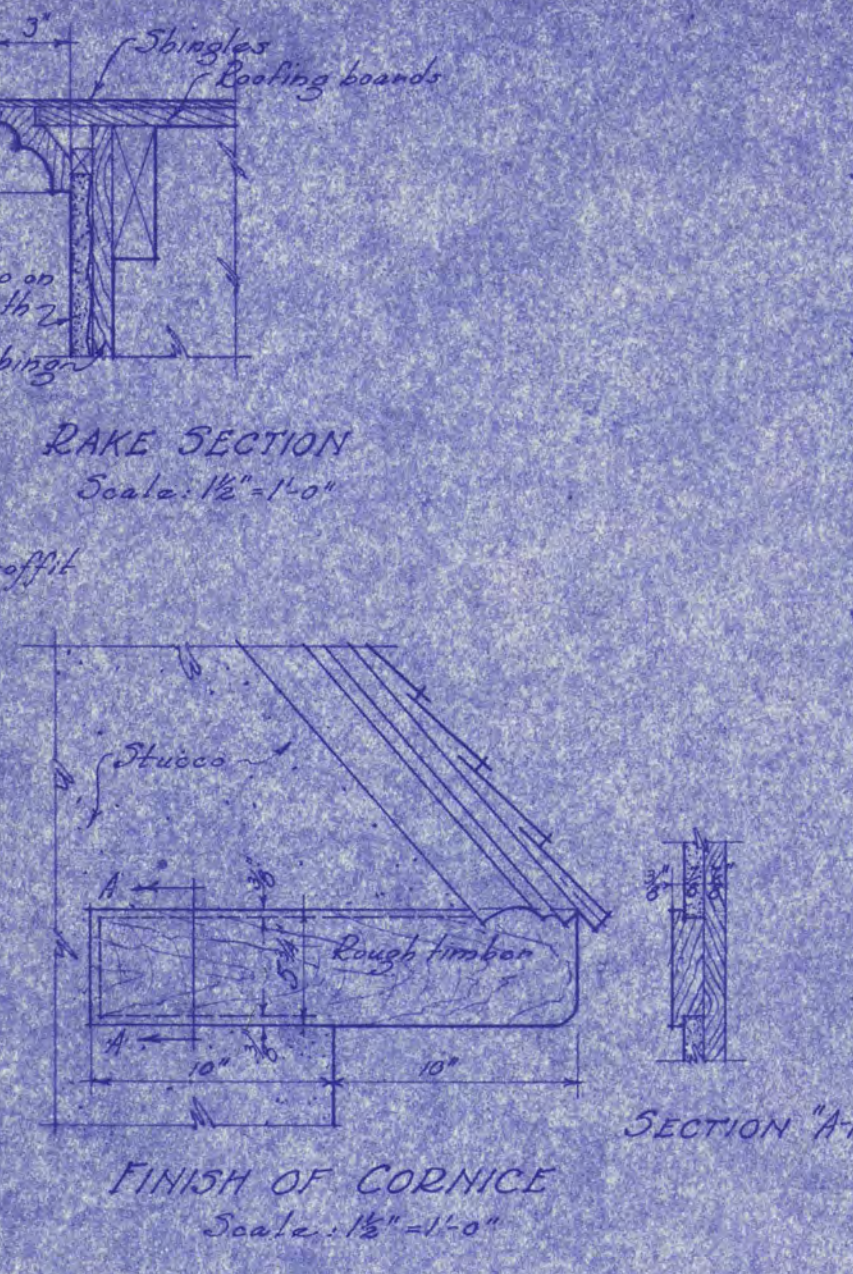
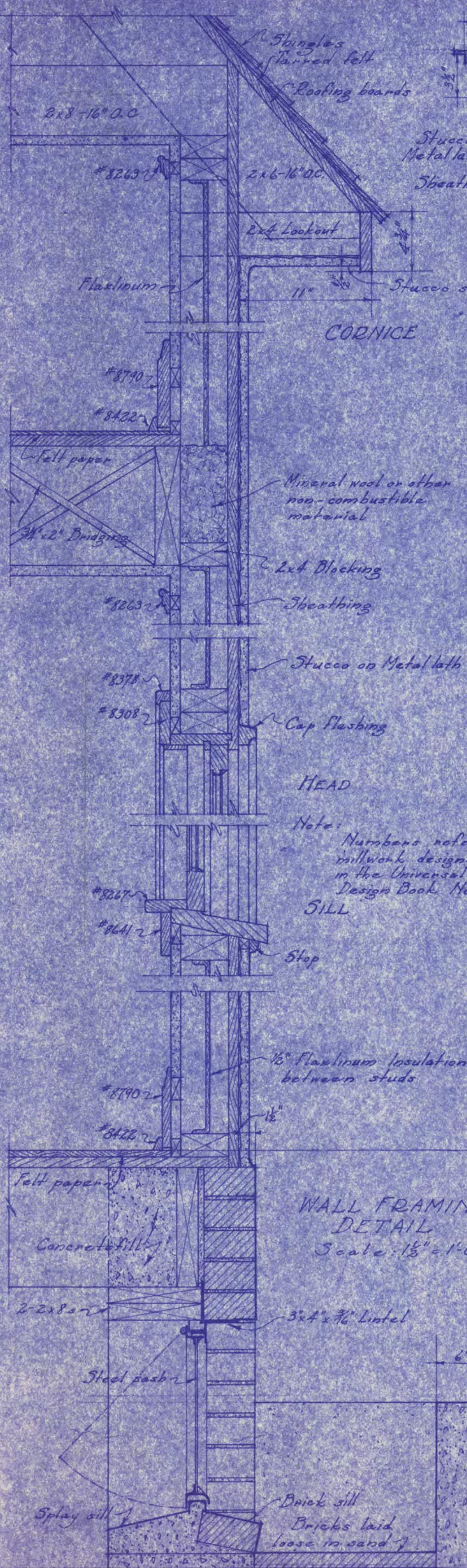
DOOR SCHEDULE - Basement

No.	Type	Size	Description
1	W	5'-0" x 6'-8 1/2"	5 Glass Panel
4	X	2'-6" x 6'-8 1/2"	" " "
1	Y	2'-6" x 2'-8 1/2"	Tin clad

SECTION THROUGH WALL
Scale: 1/2" = 1'-0"

RESIDENCE
FOR
DR. C. B. LEWIS
ST. CLOUD MINN.

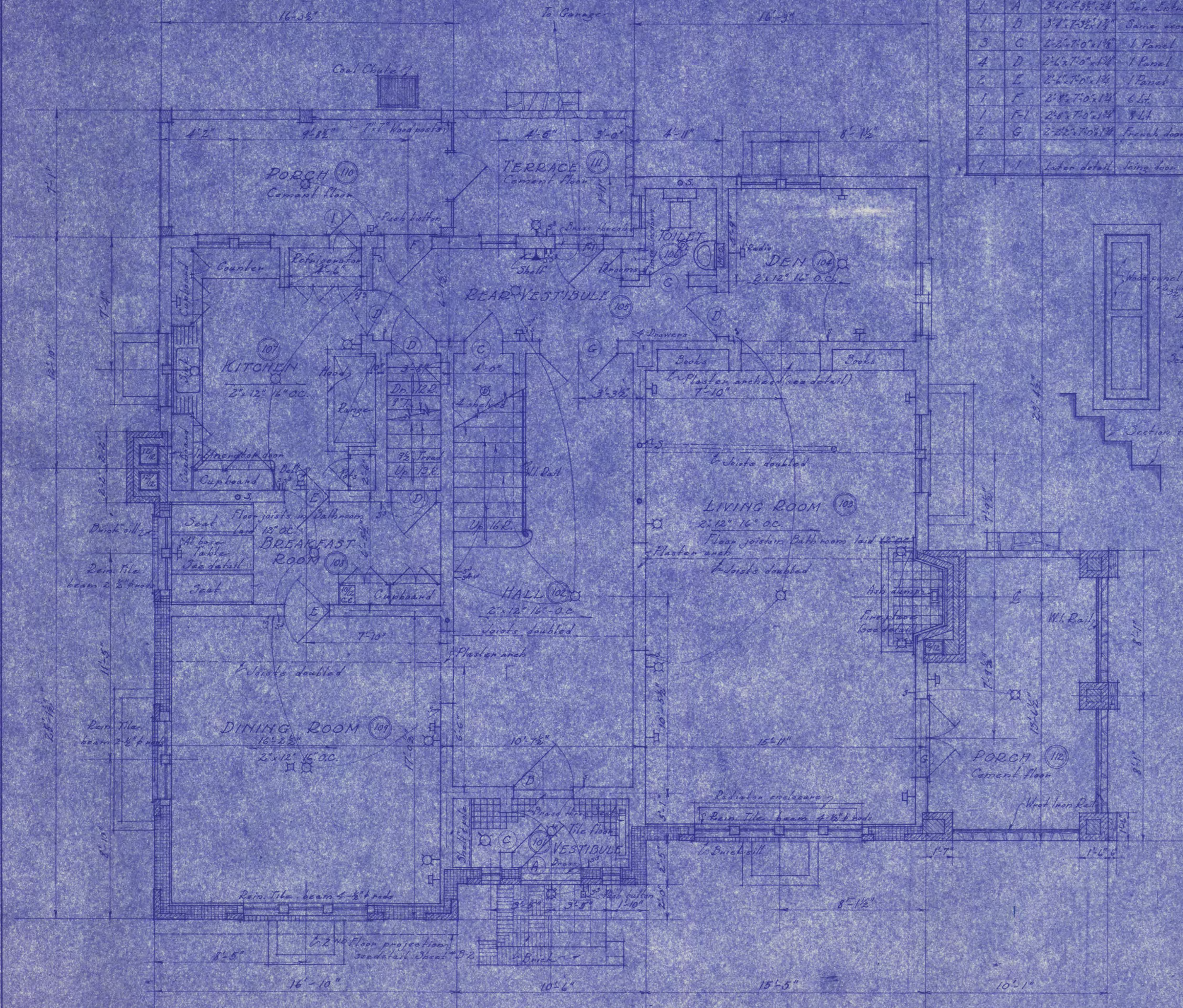
LOUIS C. PINAULT ARCHITECT
ST. CLOUD MINN.
DRAWING NO. 136 B-5
DATE OCT. 7, 1925
Checked 10-20-25



RESIDENCE
FOR
DR. T. N. FLEMING
ST. CLOUD MINN. 507A

LOUIS C. PINAULT ARCHITECT
ST. CLOUD MINN.
DRAWING NO. 136 D-5 JULY 18 25

DOOR SCHEDULE First Floor			
No.	Type	Size	Description
1	A	3'-6" x 7'-0"	See Entrance detail J.C.1
1	B	3'-7" x 5'-6"	Same, except for 5th panel
3	C	2'-6" x 7'-0"	1 Panel
4	D	2'-6" x 7'-0"	1 Panel
2	E	2'-6" x 7'-0"	1 Panel
1	F	2'-8" x 7'-0"	6 Lt.
1	F-1	2'-8" x 7'-0"	8 Lt.
2	G	2'-8" x 7'-0"	French doors, 10 lts. each
1	I	Later detail	Living door



FIRST FLOOR PLAN
Scale 1/4" = 1'-0"

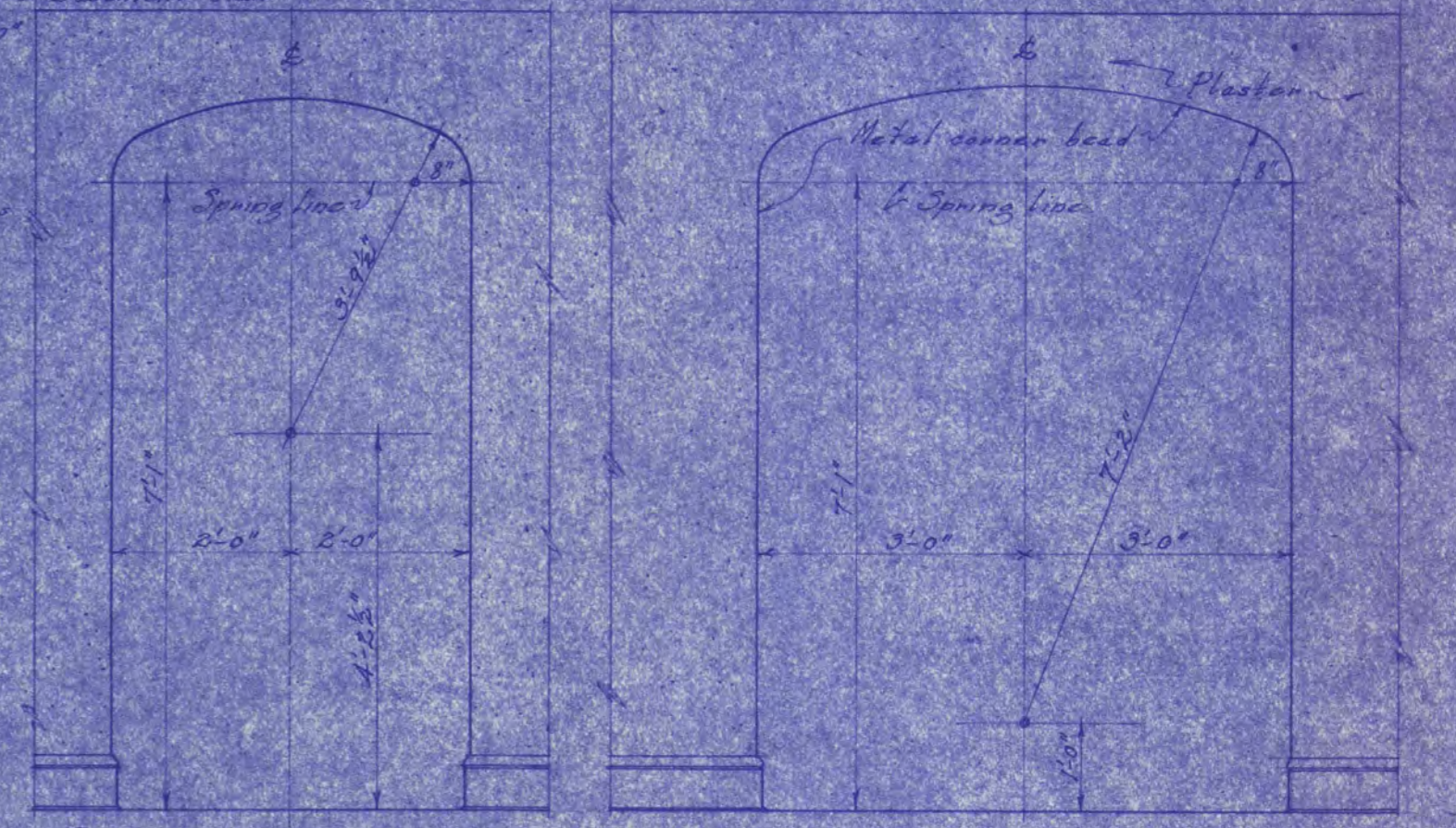
Note: Masonry walls are figured to the face of the studs; frame walls are figured outside of sheathing; for exterior walls and center line of partitions.

Note: Score all stone and brick work to frame walls with 8/1 Galv. iron anchors fastened to studs.

DOOR SCHEDULE First Floor			
No.	Type	Size	Description
1	A	3'-6" x 7'-0"	See Entrance detail J.C.1
1	B	3'-7" x 5'-6"	Same, except for 5th panel
3	C	2'-6" x 7'-0"	1 Panel
4	D	2'-6" x 7'-0"	1 Panel
2	E	2'-6" x 7'-0"	1 Panel
1	F	2'-8" x 7'-0"	6 Lt.
1	F-1	2'-8" x 7'-0"	8 Lt.
2	G	2'-8" x 7'-0"	French doors, 10 lts. each
1	I	Later detail	Living door

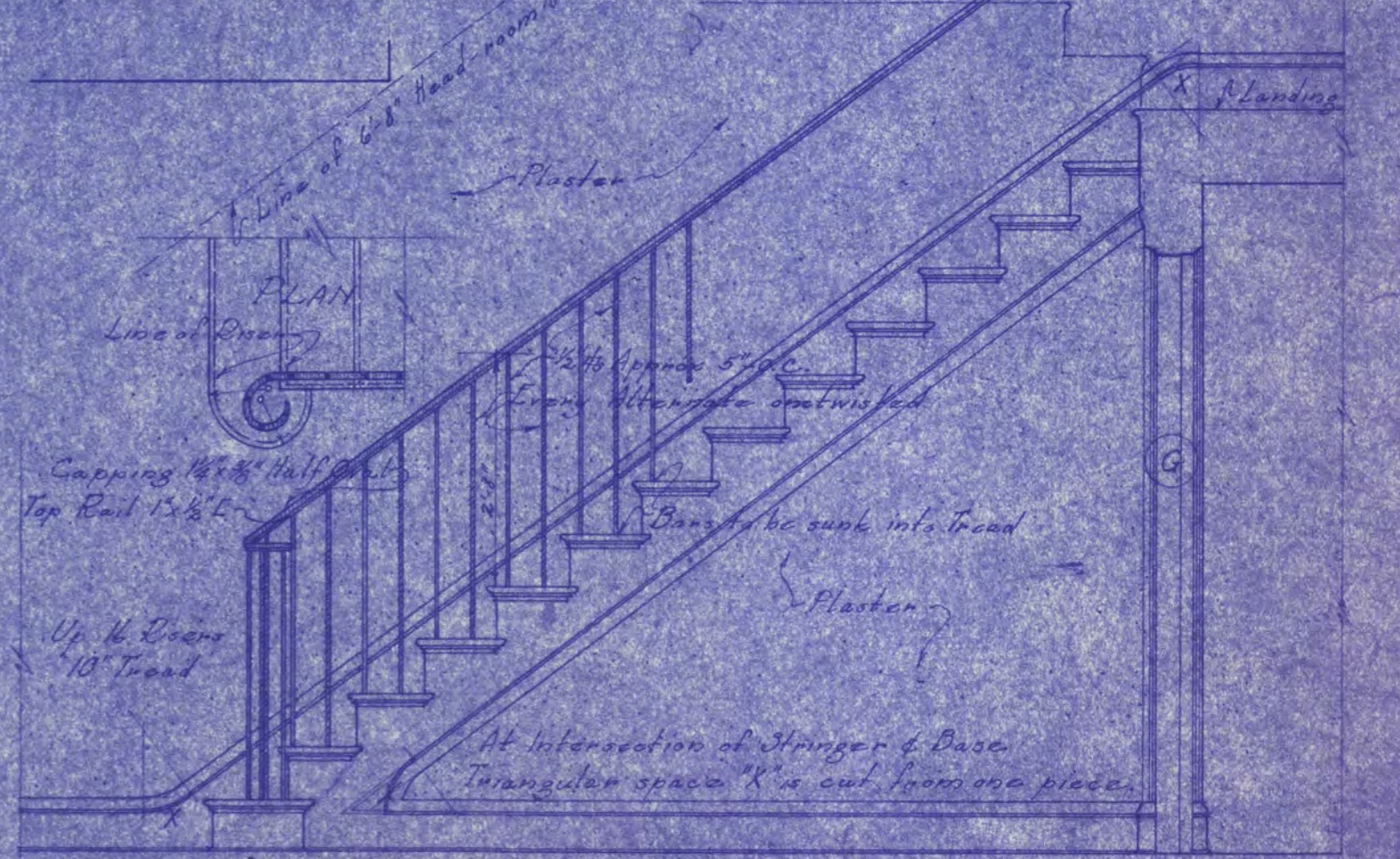
DETAIL OF CABINET FOR TABLE LEAVES
Location - Basement stair
Scale: 3/4" = 1'-0"

SECTION & HALF ELEVATION - EAST WALL OF L.R.
Scale: 1/2" = 1'-0"



DINING ROOM ARCH
Scale: 1/2" = 1'-0"

LIVING ROOM ARCH
Scale: 1/2" = 1'-0"



1/2 INCH SCALE DETAIL OF MAIN STAIR

RESIDENCE
FOR
DR. C. B. LEWIS
ST. CLOUD MINN.

LOUIS C. PINAULT ARCHITECT
ST. CLOUD MINN.
DRAWING NO 138 D-6
DATE OCT. 7, 1925