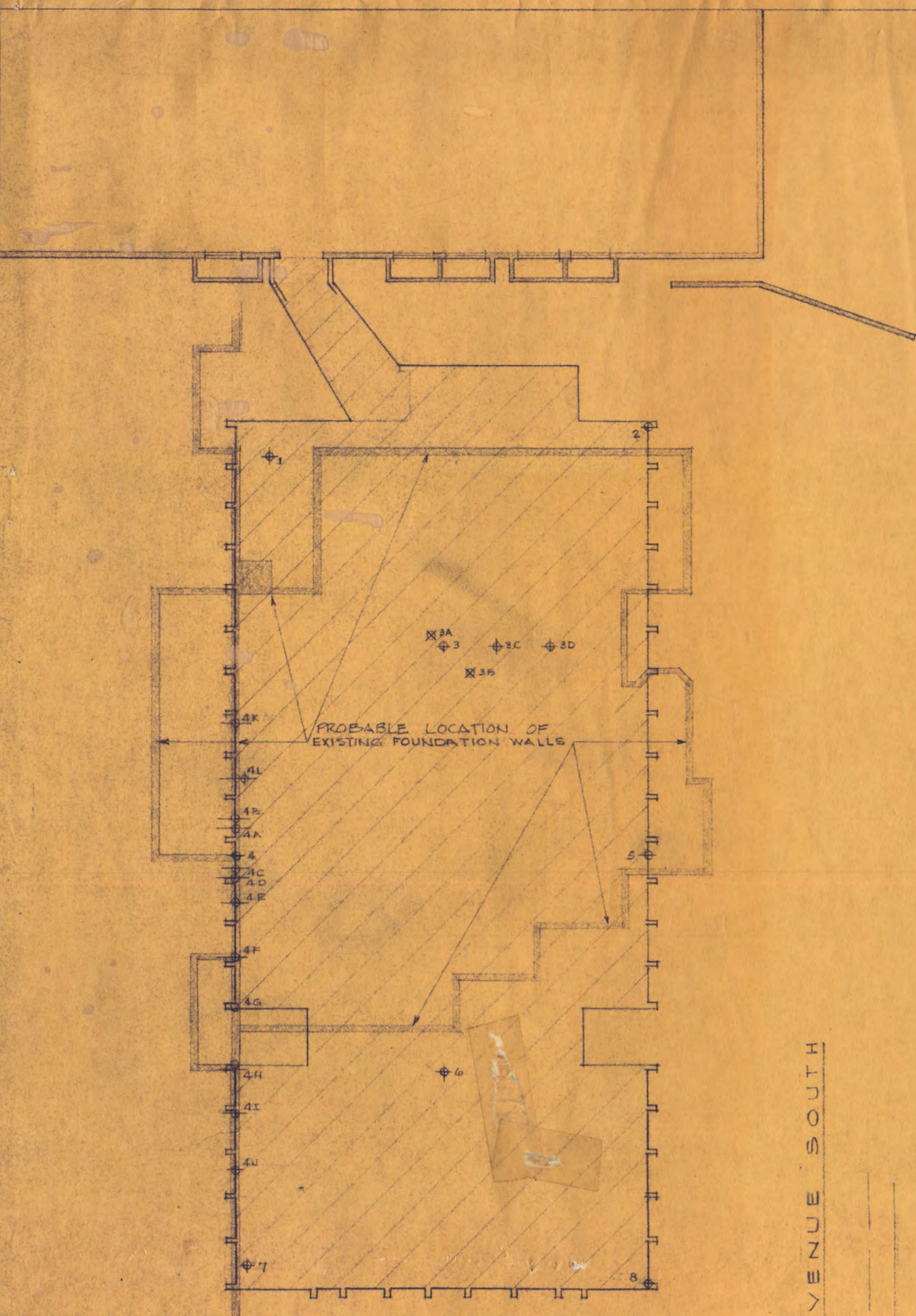


BUSINESS BUILDINGS

BUSINESS BUILDING

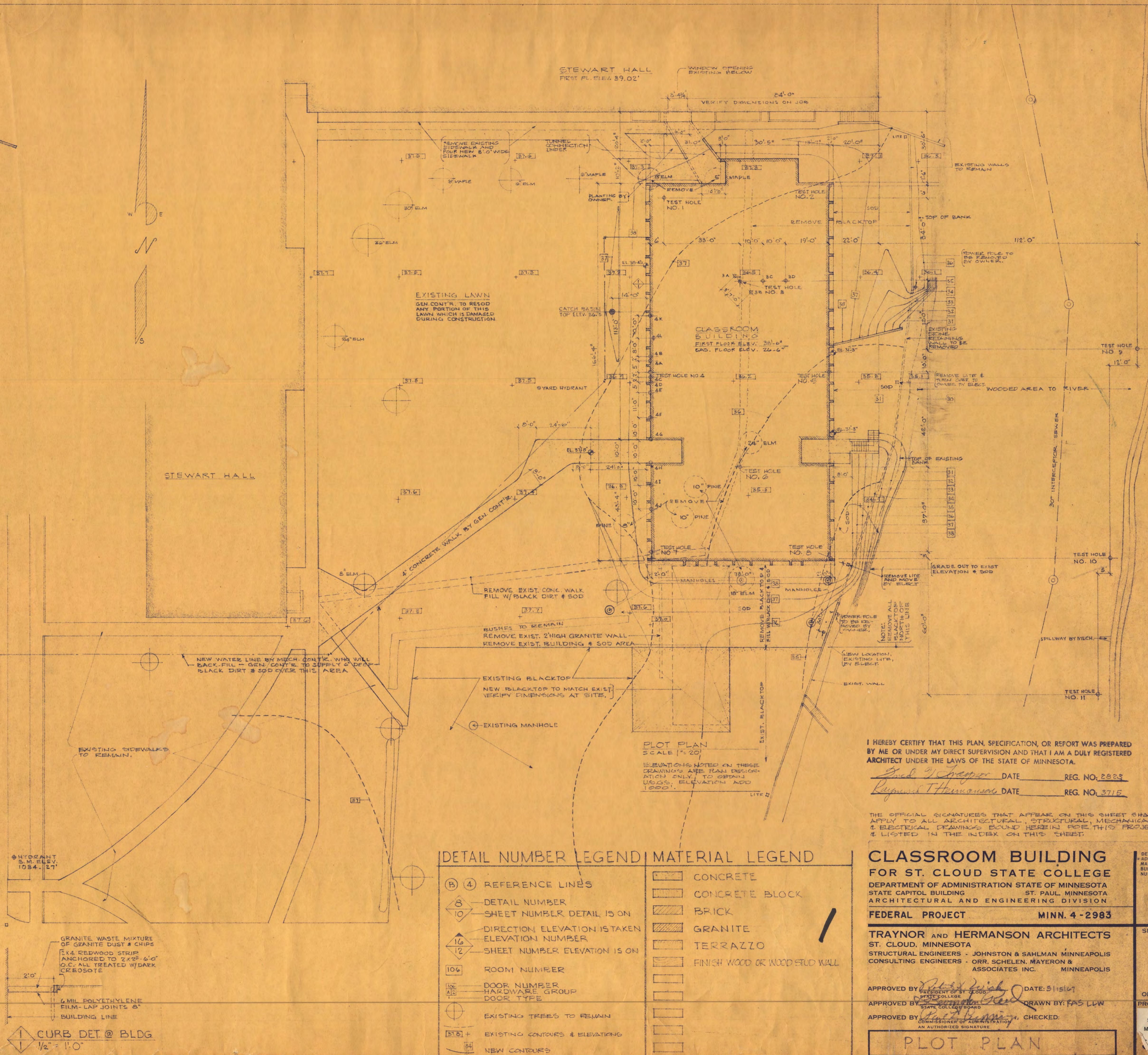


PLAN OF EXISTING FOUNDATION WALLS IN THE AREA OF THE CLASSROOM BUILDING  
ALL WALLS ARE BELOW THE EXISTING GRADE

INDEX

- ARCHITECTURAL**
- 1 PLOT PLAN
  - 2 BASEMENT FLOOR PLANS
  - 3 FIRST FLOOR PLAN
  - 4 SECOND FLOOR PLAN
  - 5 THIRD FLOOR PLAN + PENTHOUSE
  - 6 EXTERIOR ELEVATIONS
  - 7 WALL SECTIONS + BUILDING SECTIONS
  - 8 BUILDING SECTIONS
  - 9 BUILDING SECTIONS + STAIR DETAILS
  - 10 ROOF PLAN + DETAILS - ELEVATOR SECTION
  - 11 DETAILS DOOR TYPES WINDOW DETAILS
  - 12 INTERIOR ELEVATIONS
  - 13 INTERIOR DETAILS
  - 14 INTERIOR DETAILS
- STRUCTURAL**
- S1 FOOTING AND FOUNDATION PLAN
  - S2 FOUNDATION WALLS, STAIR B, TUNNEL DET.
  - S3 FIRST FLOOR FRAMING PLAN
  - S4 SECOND FLOOR FRAMING PLAN
  - S5 THIRD FLOOR FRAMING PLAN
  - S6 ROOF FRAMING PLAN
  - S7 FIRST AND SECOND FLOOR BEAM & JOIST SCHEDULES, DET.
  - S8 ROOF & THIRD FLOOR BEAM & JOIST SCHEDULES
- MECHANICAL**
- M1 PLOT PLAN - MANHOLE DET.
  - M2 BASEMENT FLOOR PLAN
  - M3 FIRST FLOOR PLAN
  - M4 SECOND FLOOR PLAN
  - M5 THIRD FLOOR PLAN
  - M6 PENTHOUSE PLAN
  - M7 PIPING DIAGRAMS
  - M8 MECH. EQUIP. RM. DETAILS
- ELECTRICAL**
- E1 PLOT PLAN
  - E2 BASEMENT PLAN
  - E3 FIRST FLOOR PLAN
  - E4 SECOND FLOOR PLAN
  - E5 THIRD FLOOR PLAN
  - E6 RISER, SCHEDULES & DIAGRAMS

FIRST AVENUE SOUTH



DETAIL NUMBER LEGEND	MATERIAL LEGEND
(B) 4 REFERENCE LINES	[Symbol] CONCRETE
8 DETAIL NUMBER	[Symbol] CONCRETE BLOCK
10 SHEET NUMBER DETAIL IS ON	[Symbol] BRICK
16 DIRECTION ELEVATION IS TAKEN	[Symbol] GRANITE
12 ELEVATION NUMBER	[Symbol] TERRAZZO
106 ROOM NUMBER	[Symbol] FINISH WOOD OR WOOD STUD WALL
106 DOOR NUMBER	
106 HARDWARE GROUP	
106 DOOR TYPE	
(Symbol) EXISTING TREES TO REMAIN	
(Symbol) EXISTING CONTOURS & ELEVATIONS	
(Symbol) NEW CONTOURS	

I HEREBY CERTIFY THAT THIS PLAN, SPECIFICATION, OR REPORT WAS PREPARED BY ME OR UNDER MY DIRECT SUPERVISION AND THAT I AM A DULY REGISTERED ARCHITECT UNDER THE LAWS OF THE STATE OF MINNESOTA.

*Paul J. Heranson* DATE \_\_\_\_\_ REG. NO. 2823  
*Ragnar T. Heranson* DATE \_\_\_\_\_ REG. NO. 3715

THE OFFICIAL SIGNATURES THAT APPEAR ON THIS SHEET SHALL APPLY TO ALL ARCHITECTURAL, STRUCTURAL, MECHANICAL & ELECTRICAL DRAWINGS BOUND HEREIN FOR THIS PROJECT & LISTED IN THE INDEX ON THIS SHEET.

**CLASSROOM BUILDING**  
**FOR ST. CLOUD STATE COLLEGE**  
 DEPARTMENT OF ADMINISTRATION STATE OF MINNESOTA  
 STATE CAPITOL BUILDING ST. PAUL, MINNESOTA  
 ARCHITECTURAL AND ENGINEERING DIVISION

FEDERAL PROJECT MINN. 4-2983

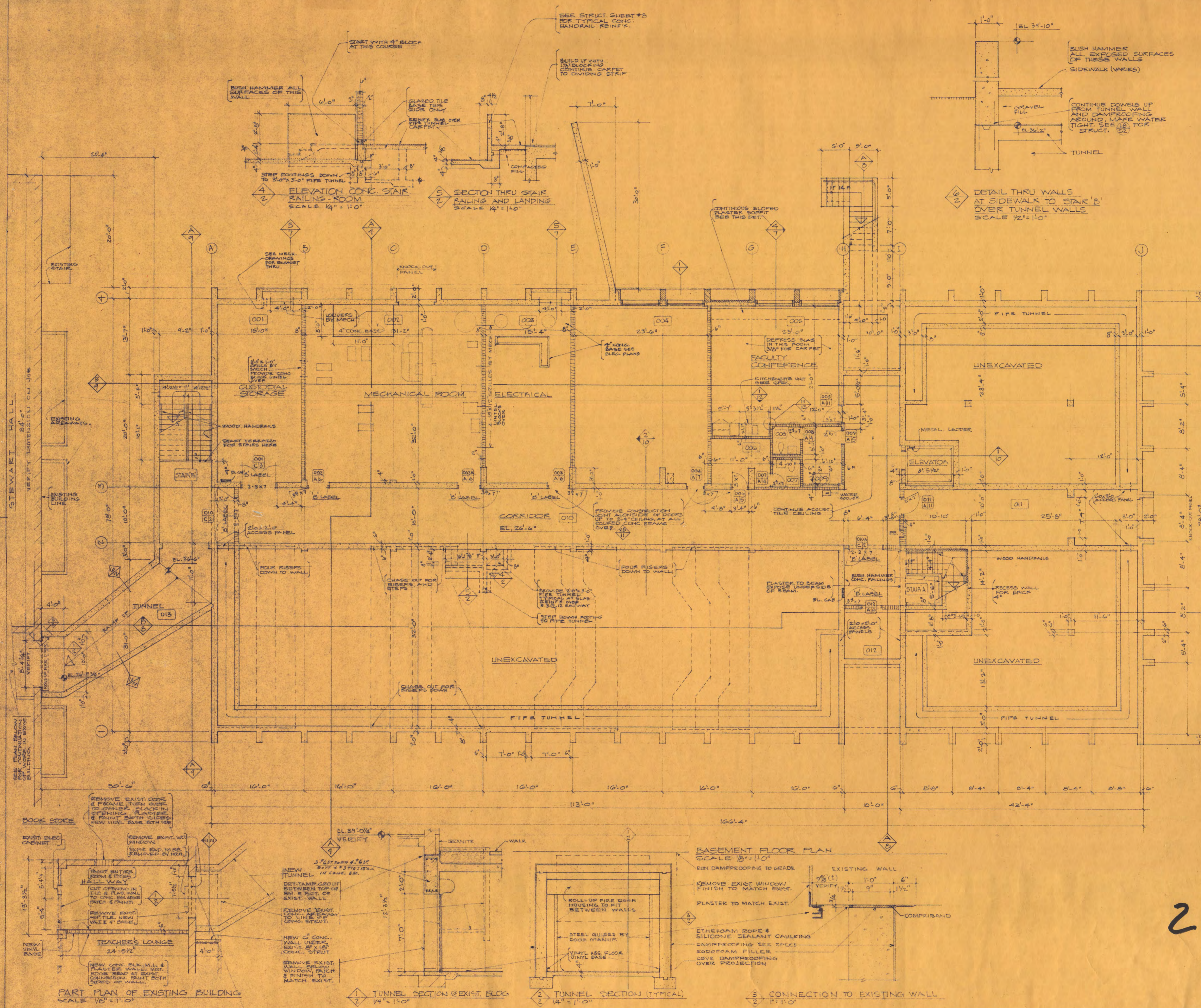
TRAYNOR AND HERMANSON ARCHITECTS  
 ST. CLOUD, MINNESOTA  
 STRUCTURAL ENGINEERS - JOHNSTON & SAHLMAN MINNEAPOLIS  
 CONSULTING ENGINEERS - ORR, SCHELEN, MAYERON & ASSOCIATES INC. MINNEAPOLIS

APPROVED BY *[Signature]* DATE: 5/15/67  
 APPROVED BY *[Signature]* DRAWN BY: FAS LLW  
 APPROVED BY *[Signature]* CHECKED: \_\_\_\_\_  
 STATE OF MINNESOTA

**PLOT PLAN**

MISSISSIPPI RIVER  
 WATER ELEV. 981.77' (1-14-67) 036-043-1967-35 644

DEPARTMENT OF ADMINISTRATION  
 MASTER BUILDING NUMBER  
**43**  
 SHEET NO.  
**1**  
 OF 14  
 PROJECT NO.  
 STATE OF MINNESOTA  
 360090



**ROOM FINISH SCHEDULE**

FLOOR	BASE	WALLS	CEILING	PAINT
C - CONCRETE VAT VINYL ASS. TILE CAR CARPET	C CONCRETE GT GLAZED TILE V VINYL	C CONCRETE CT CERAMIC TILE W WOOD CB CONC. BLOCK B BRICK	ACOUSTICAL TILE DESIGNATIONS (A) (TYP) (B) P - PLASTER EXP. EXPOSED C - GROUT FILL FK - KEENE'S FAC.	L LATEX

NO	NAME	FLOOR	BASE	WALLS	CLG	PAINT	REMARKS
001	CUSTODIAL STORAGE	C	C	C	EXP		
002	MECHANICAL	C	C	C	SP		CEM. FLOORING SURF. AS PER SPEC.
003	ELECTRICAL	C	C	C	EXP		
004	PRACTICUM ROOM	C	C	CB	EXP		
005	FACULTY CONFERENCE III	CAR	CAR	W.C.	(A), P		WOOD WALLS TO CAR ROOM WALLS. BUSH HAMMER EXPOSED WALLS.
006	MEN'S COT	VAT	GT	CB	(A)	L	
007	TOILET	CT	CT	CT	FK	L	WAINSCOT, CT, 4'-0" HIGH
008	TOILET	CT	CT	CT	FK	L	WAINSCOT, CT, 4'-0" HIGH
009	WOMEN'S COT	VAT	GT	CB	(A)	L	
010	CORRIDOR	VAT	C	C, CB	(B), P	L	SEE SCHEDULED CELL PLAN, QTR. 14
011	FUTURE CORRIDOR	C	C	C	EXP		
012	ELEVATOR MACHINE ROOM	C	C	C, CB	EXP		
013	TUNNEL	VAT	V	C	EXP		
	STAIR 'A'	T	T	C, CB	EXP	L, L	
	STAIR 'B'	T	C, V	C	EXP	L, L	STAIR TERR. AT FIRST FLOOR.

CEILING IN FACULTY CONFERENCE 005 TO BE SUSPENDED TO HEIGHT OF 9'-0". SPECIAL SUSPENSION IN CEILING OF MECHANICAL ROOM TO BE AS SPECIFIED. ALL OTHER CEILINGS WITH ACOUSTICAL TILE OR PLASTER TO BE 8'-4" HEIGHT.

ALL CONCRETE EXPOSED IN FINISHED SPACES (WALLS) EXCEPT AS NOTED BUSH HAMMER SHALL BE FINISHED WITH SMOOTH PLYWOOD FINISH. CONE HOLES SPACED EVENLY.

ALL EXPOSED CONCRETE WALLS WITH SMOOTH PLYWOOD FINISH AND 8'-4" SUSPENDED CEILING WILL BE FORMED WITH 4" BOARD AT BASE AND 8'-0" HIGH PLYWOOD.

**CLASSROOM BUILDING**

FOR ST. CLOUD STATE COLLEGE  
DEPARTMENT OF ADMINISTRATION STATE OF MINNESOTA  
STATE CAPITOL BUILDING ST. PAUL, MINNESOTA  
ARCHITECTURAL AND ENGINEERING DIVISION

FEDERAL PROJECT MINN. 4-2983

TRAYNOR AND HERMANSON ARCHITECTS  
ST. CLOUD, MINNESOTA  
STRUCTURAL ENGINEERS - JOHNSTON & SAHLMAN MINNEAPOLIS  
CONSULTING ENGINEERS - ORR, SCHELEN, MAYERON & ASSOCIATES INC. MINNEAPOLIS

APPROVED BY: \_\_\_\_\_ DATE: 5/15/67  
APPROVED BY: \_\_\_\_\_ DRAWN BY: KAS LWW ED  
APPROVED BY: \_\_\_\_\_ CHECKED: \_\_\_\_\_

COMMISSIONER OF ADMINISTRATION  
AN AUTHORIZED SIGNATURE

**BASEMENT FLOOR PLANS**

DEPARTMENT OF ADMINISTRATION  
MASTER BUILDING NUMBER  
**43**  
SHEET NO.  
**2**  
OF 14  
PROJECT NO.  
STATE OF MINNESOTA  
**6360090**

ROOM FINISH SCHEDULE

FLOOR	BASE	WALLS	CEILING	PAINT
C CONCRETE	C CONCRETE	C CONCRETE	ACOUSTICAL TILE	L LATEX
T TERRAZZO	T TERRAZZO	CB CONC. BLOCK	(A) TYPE	E ENAMEL
VAT VINYLASBESTE	CT CERAMIC TILE	B BRICK	(B) TYPE	
CT CERAMIC TILE	CT CERAMIC TILE	W WOOD	PK PLASTER (KEYED)	
CAF CARPET	GT GLAZED TILE	P PLASTER	EXP EXPOSED	
	CAF CARPET			
	V-VINYL			

NO	NAME	FLOOR	BASE	WALLS	CLG	PAINT	REMARKS
100	OFFICE (FACULTY)	VAT	V	CB, P	(A)	L	
101	OFFICE	VAT	V	CB, P	(A)	L	
102	OFFICE	VAT	V	CB, P	(A)	L	
103	OFFICE	VAT	V	CB, P	(A)	L	
104	OFFICE	VAT	V	CB, P	(A)	L	
105	OFFICE	VAT	V	CB, P	(A)	L	
106	OFFICE	VAT	V	CB, P	(A)	L	
107	OFFICE	VAT	V	CB, P	(A)	L	
108	OFFICE	VAT	V	CB, P	(A)	L	
109	OFFICE	VAT	V	CB, P	(A)	L	
110	OFFICE	VAT	V	CB, P	(A)	L	
111	OFFICE	VAT	V	CB, P	(A)	L	
112	OFFICE	VAT	V	CB, P	(A)	L	
113	OFFICE	VAT	V	CB, P	(A)	L	
114	OFFICE	VAT	V	CB, P	(A)	L	
115	WORK ROOM	VAT	V	CB, P	(A)	L	
116	GENERAL OFFICE	VAT	V	CB, P	(A)	L	
117	WAITING	T	GT	B	(A)	L	
118	MENS TOILET	CT	CT	CT	PK	E	#1 CERAMIC TILE WAINSCOT
119	WOMENS TOILET	CT	CT	CT	PK	E	#2 CERAMIC TILE WAINSCOT
120	CUSTODIAN	CT	CT	CT	PK	E	#3 CERAMIC TILE WAINSCOT
121	CORRIDOR	VAT	GT	CB, P	(A)	L	
122	CORRIDOR	T	GT	B, CB	(B)	L	SEE SCHEDULED CELL PLAN, SHT. 14
123	STORAGE	VAT	GT	CB	(A)	L	
124	GENERAL ASSISTANTS	VAT	GT	CB	(A)	L	
125	CLASS ROOM	208	CAR.	CAR.	CB	(A)	L
126	CLASS ROOM	203	CAR.	CAR.	CB	(A)	L
127	CLASS ROOM	203	CAR.	CAR.	CB	(A)	L
128	CLASS ROOM	208	CAR.	CAR.	CB	(A)	L
129	CUSTODIAN	VAT	GT	CB	PK	E	
130	HALL	VAT	GT	CB, B	(A)	L	
131	TEACHING ASSISTANTS	VAT	GT	CB	(A)	L	
132	CLASS ROOM	205	VAT	GT	CB	(A)	L
133	RESEARCH OFFICE	108	VAT	GT	CB	(A)	L
134	RESEARCH BUREAU OFF.	106	VAT	GT	CB	(A)	L
135	WORK - STORAGE	VAT	GT	CB	(A)	L	
136	RESEARCH DIRECTOR	107	VAT	GT	CB	(A)	L
137	DEAN'S OFFICE	CAR	CAR	W	(A)	L	
138	SCHOOL OF BUSINESS OFFICE	VAT	GT	CB	(A)	L	
139	CONFERENCE	CAR	CAR	W	(A)	L	ALL WALLS TO CARPETS AND FLOOR STRIPS
140	SEMINAR	CAR	CAR	W, CB	(A)	L	
141	MENS TOILET	CT	CT	CT	PK	E	
	STAIR "A"	T	GT	B	EXP	L	SEE DETAILS ON BLUEPRINTS
	STAIR "B"	T	T, GT	CB	EXP	L	

ALL CEILINGS DESIGNATED AS ACOUSTICAL TILE SHALL BE CLASSIFIED INTO TWO (2) CATEGORIES TYPE (A), TYPE (B). SEE SPECS. AS TO DIFFERENCE

ALL CEILINGS SHALL BE SUSPENDED TO A 9'-0" HEIGHT. THE EXCEPTION TO ROOMS THAT ARE SUSPENDED TO OTHER THAN 9'-0" HEIGHTS SHALL BE SUSPENDED TO 8'-4" HEIGHT. THEY ARE AS FOLLOWS:

- ALL FACULTY OFFICES: 100 TO 114, 200 TO 214, 300 TO 314
  - CORRIDORS: 122, 121, 222, 221, 322, 321
  - WAITING: 117, 217, 317
  - GENERAL OFFICE: 116, 216, 316
  - WORK ROOM: 115, 215, 315
  - CUSTODIANS: 120, 220, 320
  - TOILETS: 118, 119, 218, 219, 318, 319
  - SEMINAR: 331
- SEE SCHEDULED CEILING PLAN.

ALL EXPOSED CONCRETE OR CONC. COLS SHALL BE BUSH HAMMERED TO LINE OF SUSPENDED CEILING OR TO UNDERSIDE OF BEAMS UNLESS AS IN STAIR. ALL OTHER CONCRETE SHALL HAVE SMOOTH FINISH. BUSH HAMMER ALL CONC. STAIR RAILINGS

**CLASSROOM BUILDING**  
 FOR ST. CLOUD STATE COLLEGE  
 DEPARTMENT OF ADMINISTRATION STATE OF MINNESOTA  
 STATE CAPITOL BUILDING ST. PAUL, MINNESOTA  
 ARCHITECTURAL AND ENGINEERING DIVISION

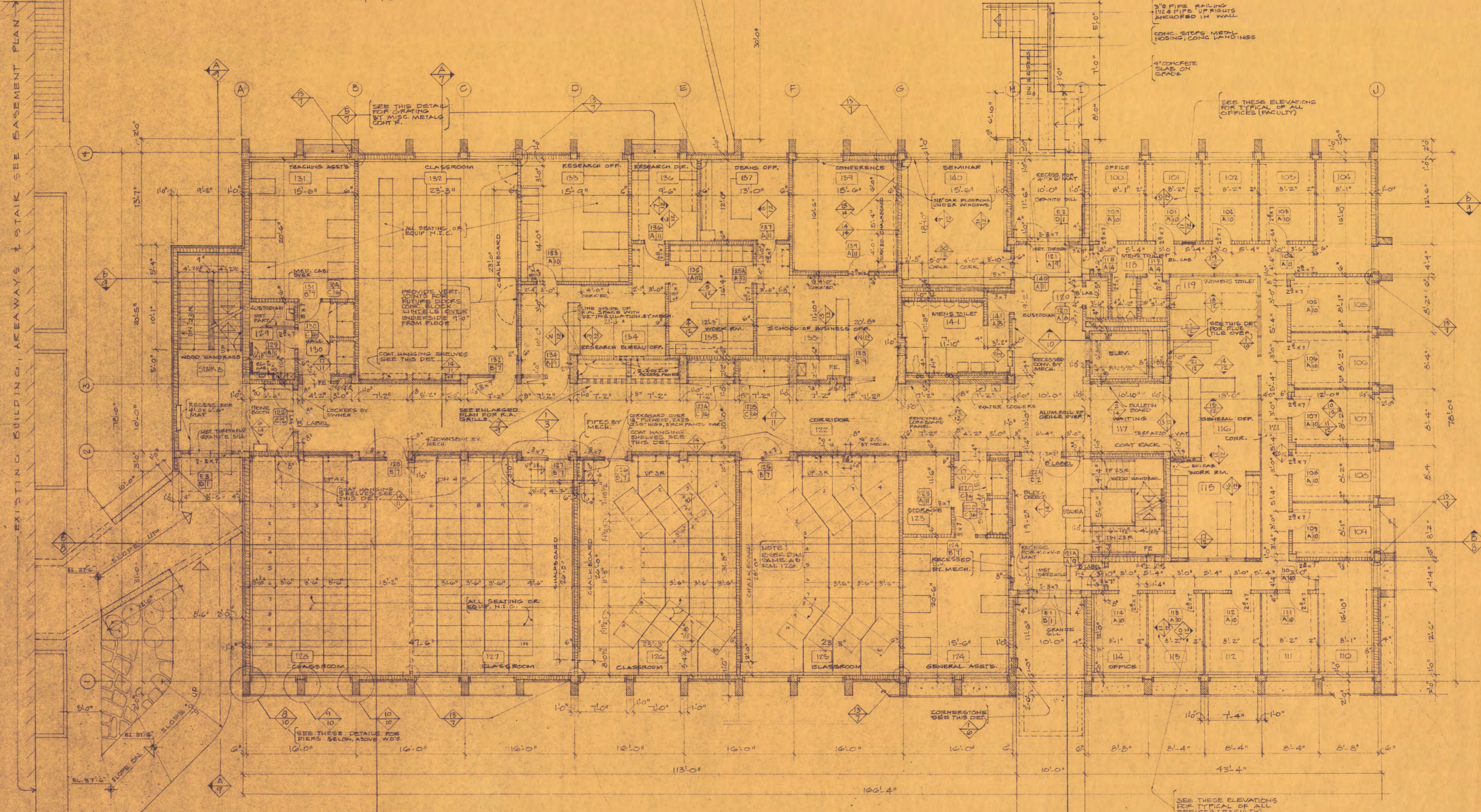
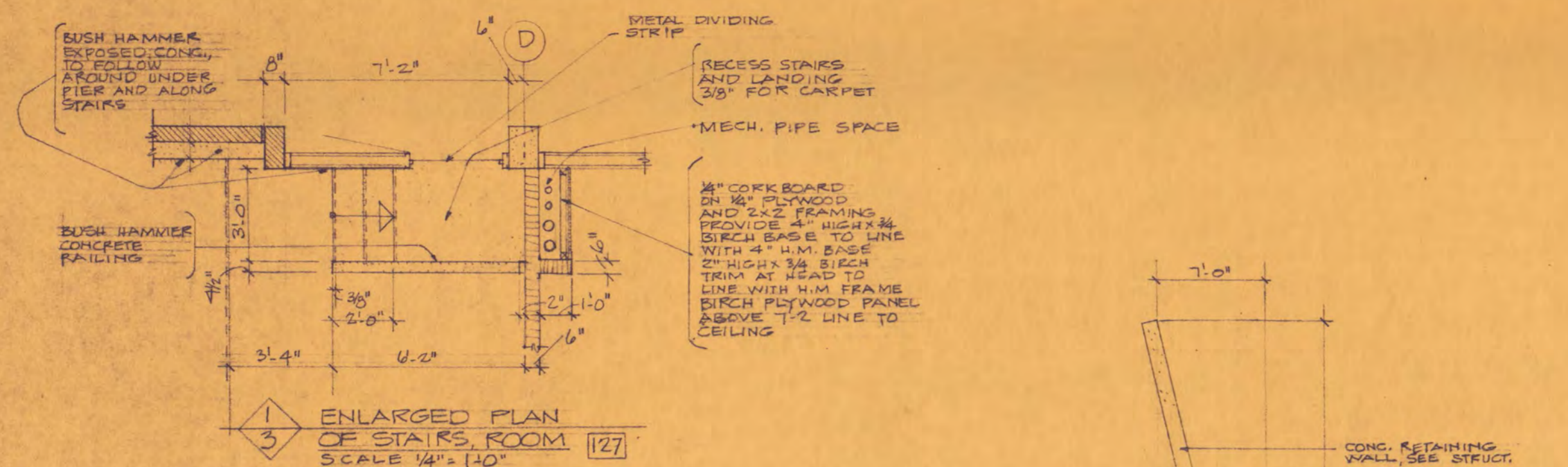
FEDERAL PROJECT MINN. 4-2983

TRAYNOR AND HERMANSON ARCHITECTS  
 ST. CLOUD, MINNESOTA  
 STRUCTURAL ENGINEERS - JOHNSTON & SAHLMAN MINNEAPOLIS  
 CONSULTING ENGINEERS - ORR, SCHELEN, MAYERON & ASSOCIATES INC. MINNEAPOLIS

APPROVED BY: PRESIDENT OF ST. CLOUD STATE COLLEGE DATE: 5/15/67  
 APPROVED BY: STATE COLLEGE BOARD DRAWN BY: RAS, ED  
 APPROVED BY: COMMISSIONER OF ADMINISTRATION AN AUTHORIZED SIGNATURE CHECKED:

FIRST FLOOR PLAN

DEPARTMENT OF ADMINISTRATION  
 MASTER BUILDING NUMBER  
**43**  
 SHEET NO.  
**3**  
 OF 14  
 PROJECT NO.  
 STATE OF MINNESOTA  
**6360090**

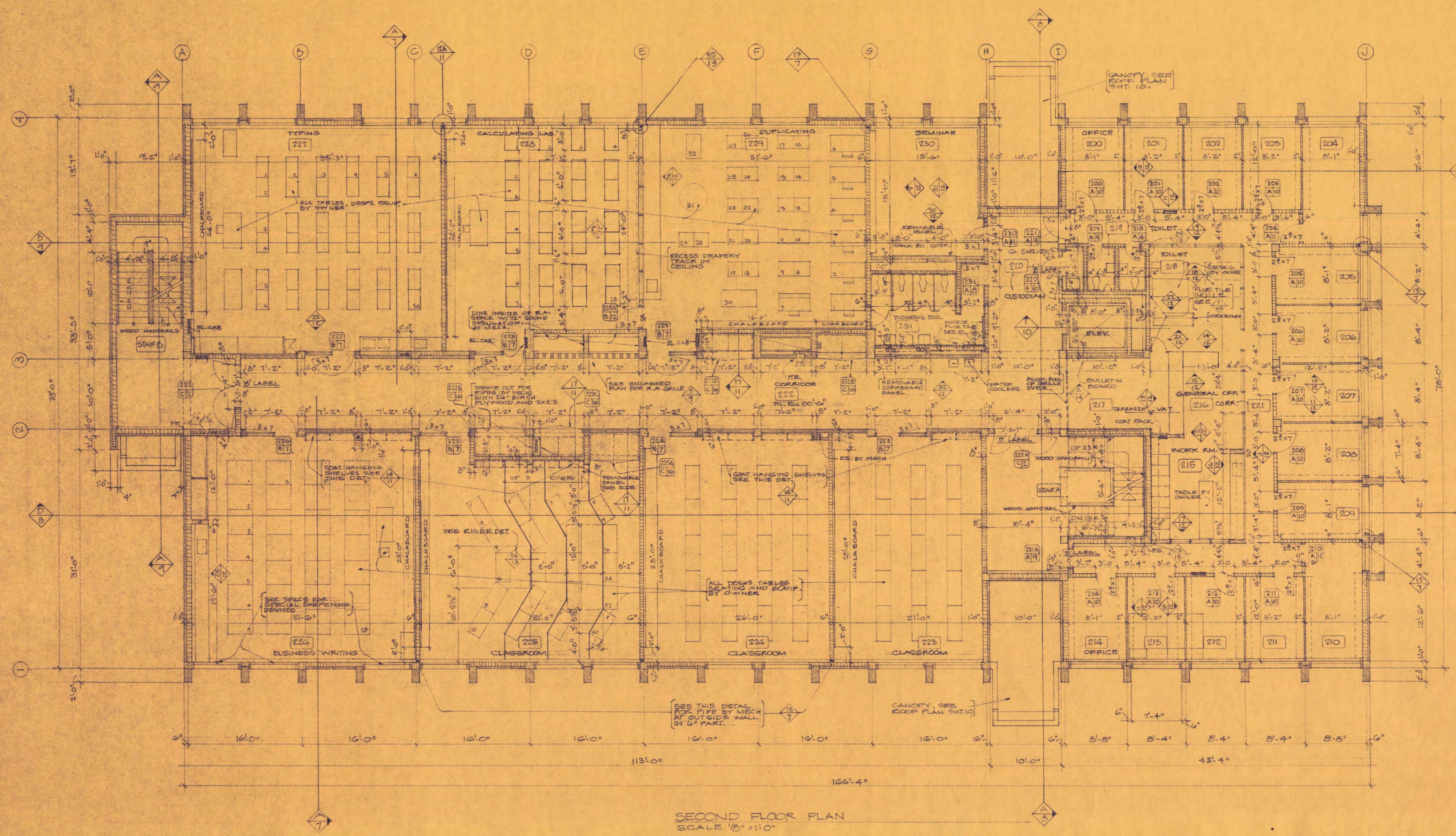


3

ROOM FINISH SCHEDULE

FLOOR	BASE	WALLS	CEILING	PAINT
C CONCRETE	ST GLAZED TILE	C CONCRETE	ACOUSTICAL TILE	L LATEX
T TERRAZZO	T TERRAZZO	CB CONC. BLOCK	DESIGNATIONS	E ENAMEL
VAT VINYL AS TILE	CT CERAMIC TILE	B BRICK	(A) TYPE	
CT CERAMIC TILE	CAR CARPET	W WOOD	(B) TYPE	
QT QUARRY TILE		CT CERAMIC TILE	PK PLASTER	
CAR CARPET		P PLASTER	EXP. EXPOSED	
			PK RECES PAS	

NO	NAME	FLOOR	BASE	WALLS	CLG	PAINT	REMARKS	
200	OFFICE (FACULTY)	VAT	V	CB, P	(A)	L		
201	OFFICE	VAT	V	CB, P	(A)	L		
202	OFFICE	VAT	V	CB, P	(A)	L		
203	OFFICE	VAT	V	CB, P	(A)	L		
204	OFFICE	VAT	V	CB, P	(A)	L		
205	OFFICE	VAT	V	CB, P	(A)	L		
206	OFFICE	VAT	V	CB, P	(A)	L		
207	OFFICE	VAT	V	CB, P	(A)	L		
208	OFFICE	VAT	V	CB, P	(A)	L		
209	OFFICE	VAT	V	CB, P	(A)	L		
210	OFFICE	VAT	V	CB, P	(A)	L		
211	OFFICE	VAT	V	CB, P	(A)	L		
212	OFFICE	VAT	V	CB, P	(A)	L		
213	OFFICE	VAT	V	CB, P	(A)	L		
214	OFFICE	VAT	V	CB, P	(A)	L		
215	WORK ROOM	VAT	V	CB, P	(A)	L		
216	GENERAL OFFICE	VAT	V	CB, P	(A)	L		
217	WAITING	T	CT, B	(A)	L			
218	WOMEN'S TOILET	CT	CT	CT, CB	PK	E	4" CERAMIC TILE, MANSUET	
219	MEN'S TOILET	CT	CT	CT, CB	PK	E	4" CERAMIC TILE, MANSUET	
220	CUSTODIAN	CT	CT	CT	PK	E	4" CERAMIC TILE, MANSUET	
221	CORRIDOR	VAT	ST, V	CB, P	(A)	L		
222	CORRIDOR	T	CT	B, CB	(B)	L	SEE REFLECTED CEIL. PLAN, SHT. 14	
223	CLASS ROOM	206	VAT	ST	CB	(A)	L	
224	CLASS ROOM	206	VAT	ST	CB	(A)	L	
225	CLASS ROOM	207	CAR	ST	CB	(A)	L	
226	BUSINESS WRITING	305	VAT	ST	CB	(A)	L	
227	TYPING	302	VAT	ST	CB, P	(A)	L	CLASS. SOUTH WALL SEE S.P. 15
228	CALCULATING LAB	304	VAT	ST	CB	(A)	L	
229	DUPLICATING	303	VAT	ST	CB, P	(A)	L	CLASS. SOUTH WALL SEE S.P. 15
230	SEMINAR	201	CAR	CAR	W	(A)	L	
231	WOMEN'S TOILET	CT	CT	CT	PK	E		
	STAIR 'A'	T	ST	B	EXP	P	SEE DETAIL AS SHOWN BY DETAILS, SHEET NO. 3	
	STAIR 'B'	T	T, CT	CB	EXP	P		



**CLASSROOM BUILDING**  
**FOR ST. CLOUD STATE COLLEGE**  
 DEPARTMENT OF ADMINISTRATION STATE OF MINNESOTA  
 STATE CAPITOL BUILDING ST. PAUL, MINNESOTA  
 ARCHITECTURAL AND ENGINEERING DIVISION

FEDERAL PROJECT MINN. 4-2983

TRAYNOR AND HERMANSON ARCHITECTS  
 ST. CLOUD, MINNESOTA  
 STRUCTURAL ENGINEERS - JOHNSTON & SAHLMAN MINNEAPOLIS  
 CONSULTING ENGINEERS - ORR, SCHELEN, MAYERON & ASSOCIATES INC. MINNEAPOLIS

APPROVED BY: PRESIDENT OF ST. CLOUD STATE COLLEGE DATE: 5/15/67  
 APPROVED BY: STATE COLLEGE BOARD DRAWN BY: R.S., ED  
 APPROVED BY: COMMISSIONER OF ADMINISTRATION AN AUTHORIZED SIGNATURE CHECKED:

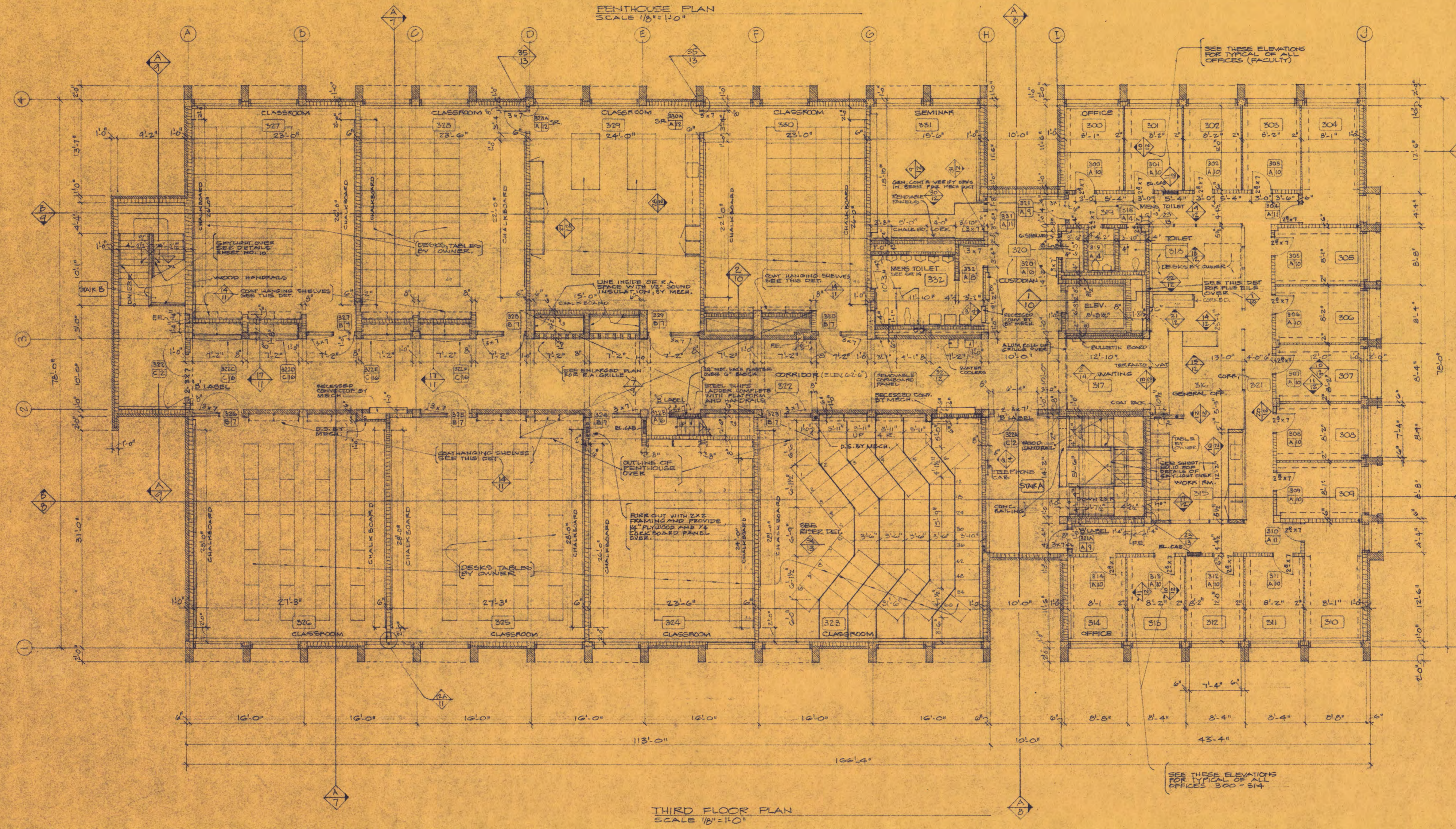
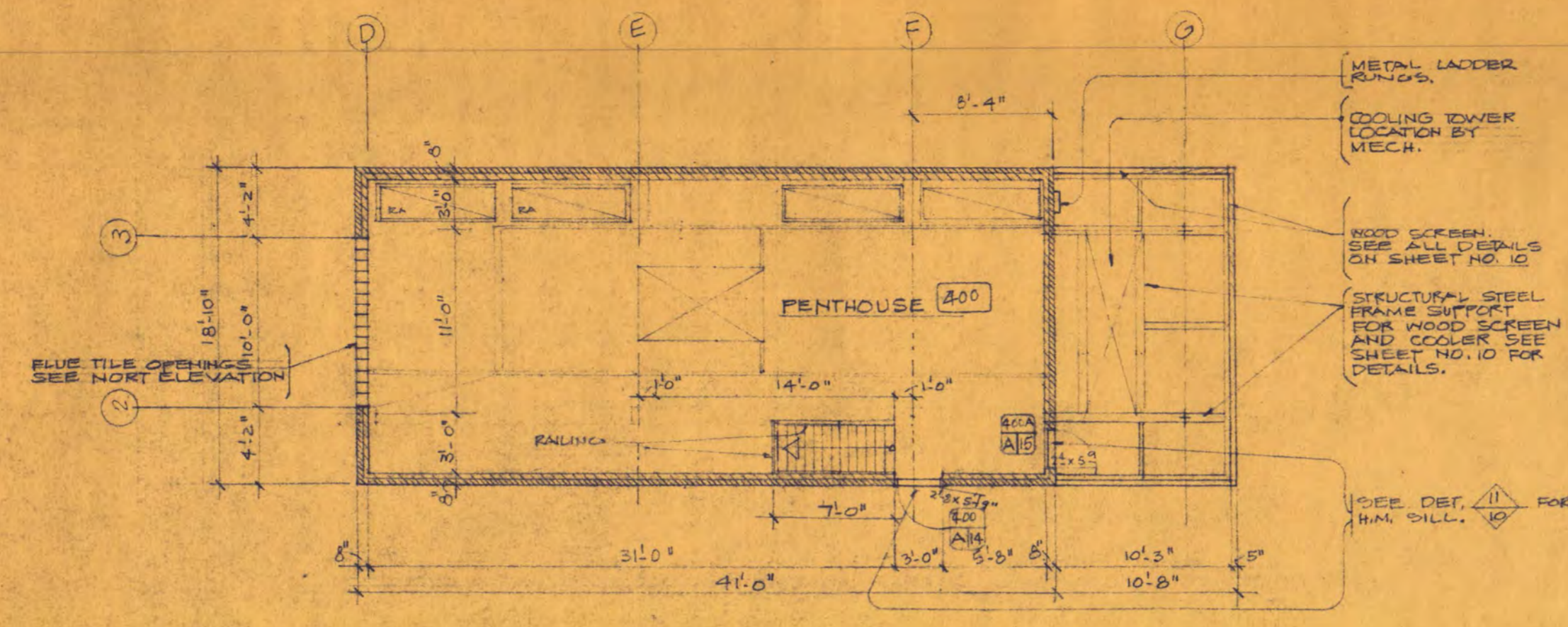
43 SHEET NO. 4 OF 14 PROJECT NO. STATE OF MINNESOTA 6360090

SECOND FLOOR PLAN

ROOM FINISH SCHEDULE

FLOOR	BASE	WALLS	CEILING	PAINT
C CONCRETE	C CONCRETE	C CONCRETE	ACOUSTICAL TILE DESIGNATIONS	L LATEX
T TERRAZZO	T TERRAZZO	CB CONC. BLOCK	(A) TYPE	B ENAMEL
VAT VINGAS TILE	CT CERAMIC TILE	B BRICK	(B) TYPE	
CT CERAMIC TILE	ST GLAZED TILE	W WOOD	PC PLASTER MESH EXPOSED	
QT QUARRY TILE	CAF CARPET	CT CERAMIC TILE		
CAR CARPET	V VINYL	P PLASTER		

NO	NAME	FLOOR	BASE	WALLS	C/O	PAINT	REMARKS
300	OFFICE FACULTY	VAT	V	CB, P	(A)	L	
301	OFFICE "	VAT	V	CB, P	(A)	L	
302	OFFICE "	VAT	V	CB, P	(A)	L	
303	OFFICE "	VAT	V	CB, P	(A)	L	
304	OFFICE "	VAT	V	CB, P	(A)	L	
305	OFFICE "	VAT	V	CB, P	(A)	L	
306	OFFICE "	VAT	V	CB, P	(A)	L	
307	OFFICE "	VAT	V	CB, P	(A)	L	
308	OFFICE "	VAT	V	CB, P	(A)	L	
309	OFFICE "	VAT	V	CB, P	(A)	L	
310	OFFICE "	VAT	V	CB, P	(A)	L	
311	OFFICE "	VAT	V	CB, P	(A)	L	
312	OFFICE "	VAT	V	CB, P	(A)	L	
313	OFFICE "	VAT	V	CB, P	(A)	L	
314	OFFICE "	VAT	V	CB, P	(A)	L	
315	WORK ROOM	VAT	V	CB, P	(A)	L	
316	GENERAL OFFICE	VAT	V	CB, P	(A)	L	
317	WAITING	T	GT	B	(A)	L	
318	WOMEN'S TOILET	CT	CT	CT	FK	E	CERAMIC TILE WAINSCOT
319	MENS TOILET	CT	CT	CT	FK	E	CERAMIC TILE WAINSCOT
320	CUSTODIAN	CT	CT	CT	FK	E	CERAMIC TILE WAINSCOT
321	CORRIDOR	VAT	ST, V	CB, P	(A)	L	
322	CORRIDOR	T	GT	B, CB	(B) P	L	
323	CLASS ROOM 204	CAR	CAR	CB	(A)	L	
324	CLASS ROOM 206A	VAT	GT	CB	(A)	L	
325	CLASS ROOM 206	VAT	GT	CB	(A)	L	
326	CLASS ROOM 206	VAT	GT	CB	(A)	L	
327	CLASS ROOM 206B	VAT	GT	CB	(A)	L	
328	CLASS ROOM 202	VAT	GT	CB	(A)	L	
329	CLASS ROOM 301	VAT	GT	CB	(A)	L	
330	CLASS ROOM 202	VAT	GT	CB	(A)	L	
331	SEMINAR	CAR	CAR	W, CB	(A)	L	CEILING HEIGHT 9'-2"
332	MENS TOILET	CT	CT	CT	FK	E	CERAMIC TILE WAINSCOT SEE DET. SHEET NO. 10
333	STAIR 'A'	T	GT	B	EXP	L	
334	STAIR 'B'	T	T, GT	CB	EXP	L	
400	PENTHOUSE	C	B	B	EXP	L	



**CLASSROOM BUILDING**  
**FOR ST. CLOUD STATE COLLEGE**  
 DEPARTMENT OF ADMINISTRATION STATE OF MINNESOTA  
 STATE CAPITAL BUILDING ST. PAUL, MINNESOTA  
 ARCHITECTURAL AND ENGINEERING DIVISION

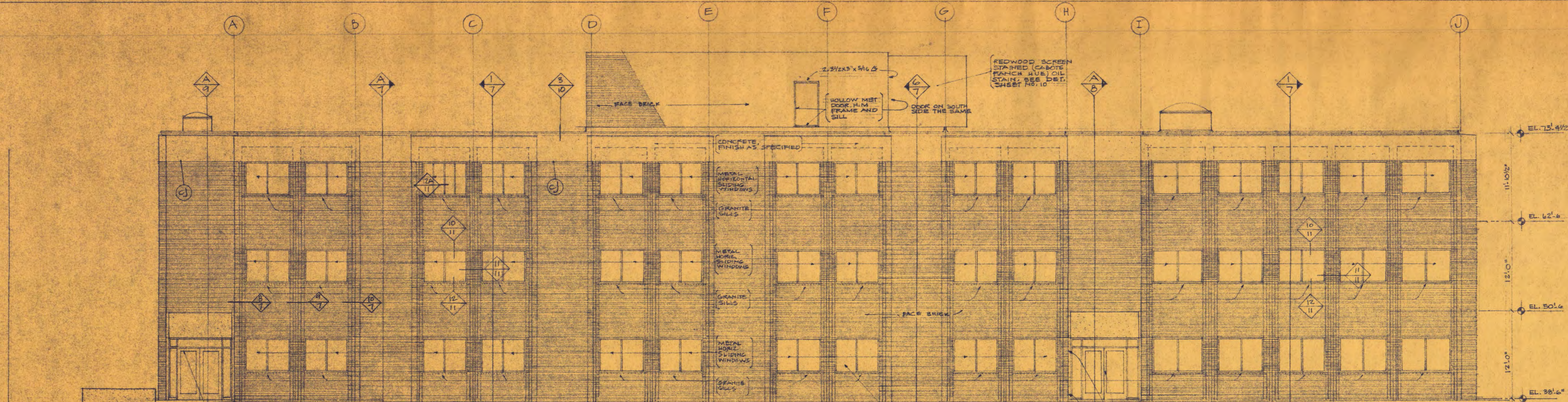
FEDERAL PROJECT MINN. 4-2983

TRAYNOR AND HERMANSON ARCHITECTS  
 ST. CLOUD, MINNESOTA  
 STRUCTURAL ENGINEERS - JOHNSTON & SAHLMAN MINNEAPOLIS  
 CONSULTING ENGINEERS - ORR, SCHELEN, MAYERON & ASSOCIATES INC. MINNEAPOLIS

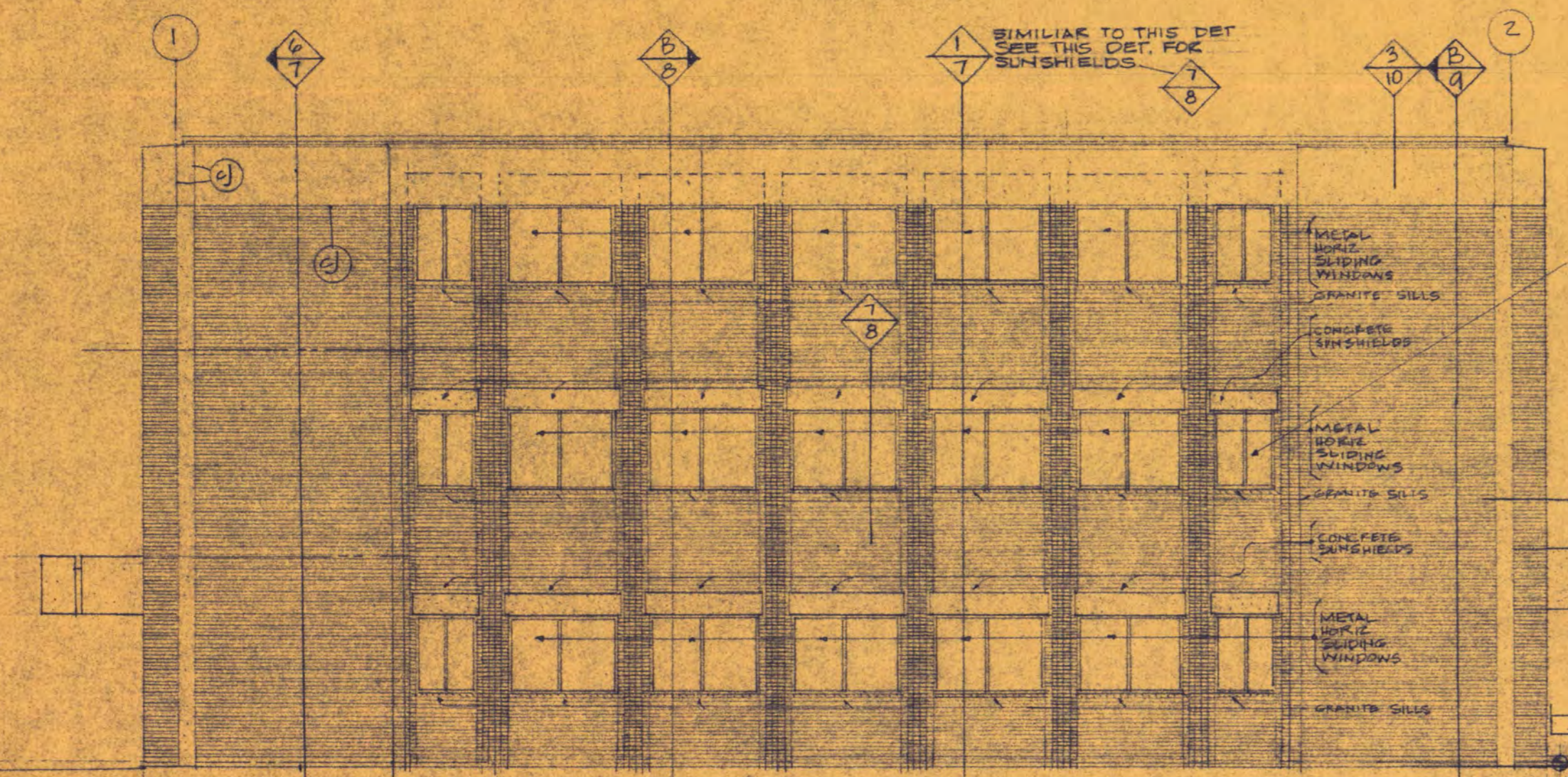
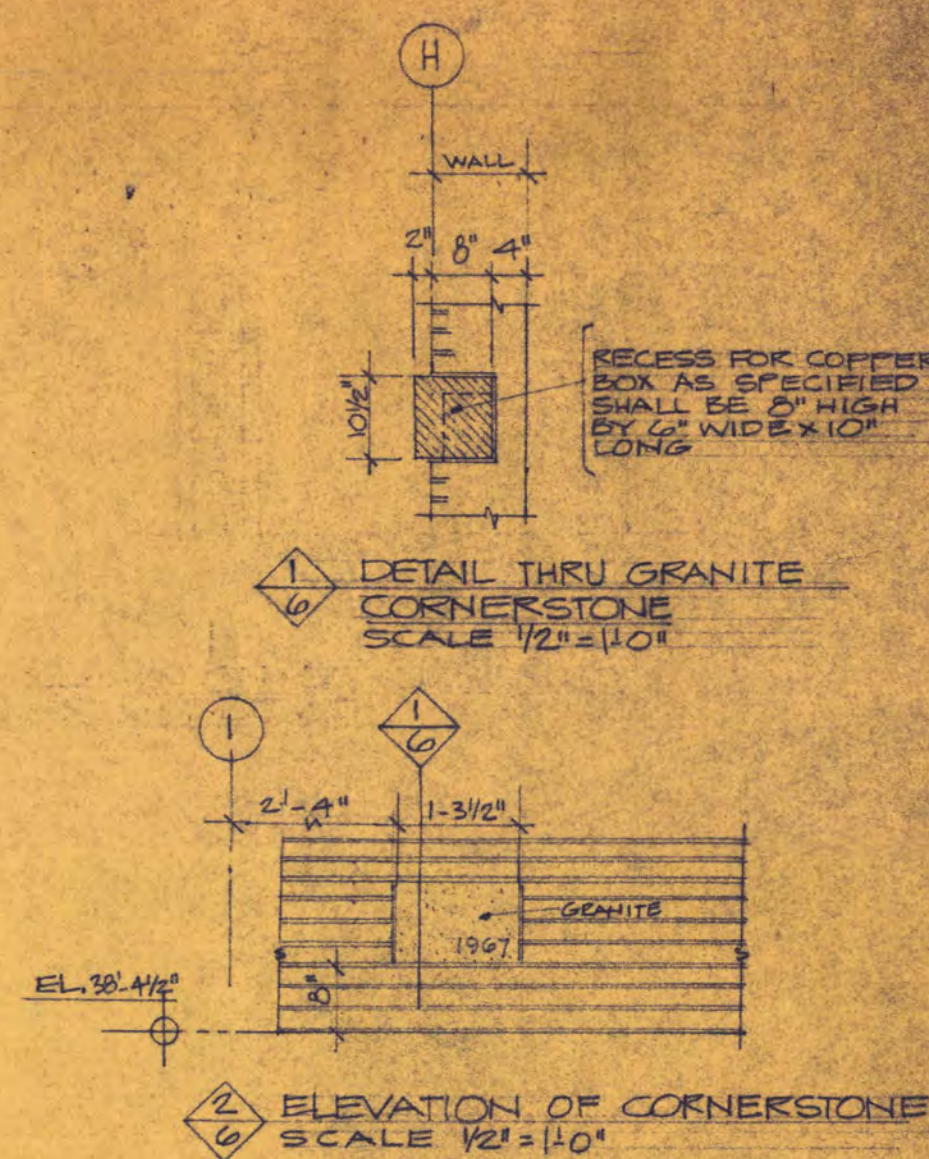
APPROVED BY: PRESIDENT OF ST. CLOUD STATE COLLEGE DATE: 5/16/67  
 APPROVED BY: STATE COLLEGE BOARD DRAWN BY: RAS, ED  
 APPROVED BY: COMMISSIONER OF ADMINISTRATION STATE OF MINNESOTA CHECKED:

THIRD FLOOR PLAN & PENTHOUSE

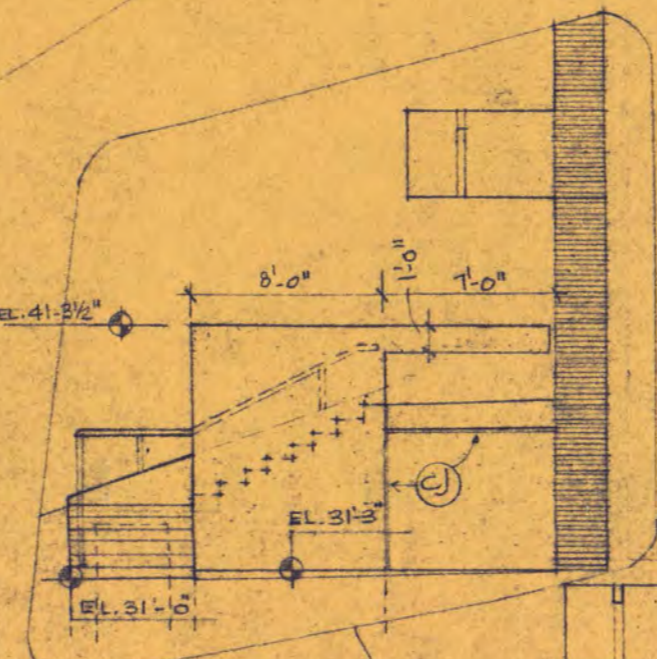
DEPARTMENT OF ADMINISTRATION MASTER BUILDING NUMBER 43  
 SHEET NO. 5  
 OF 14 PROJECT NO. STATE OF MINNESOTA 6360090



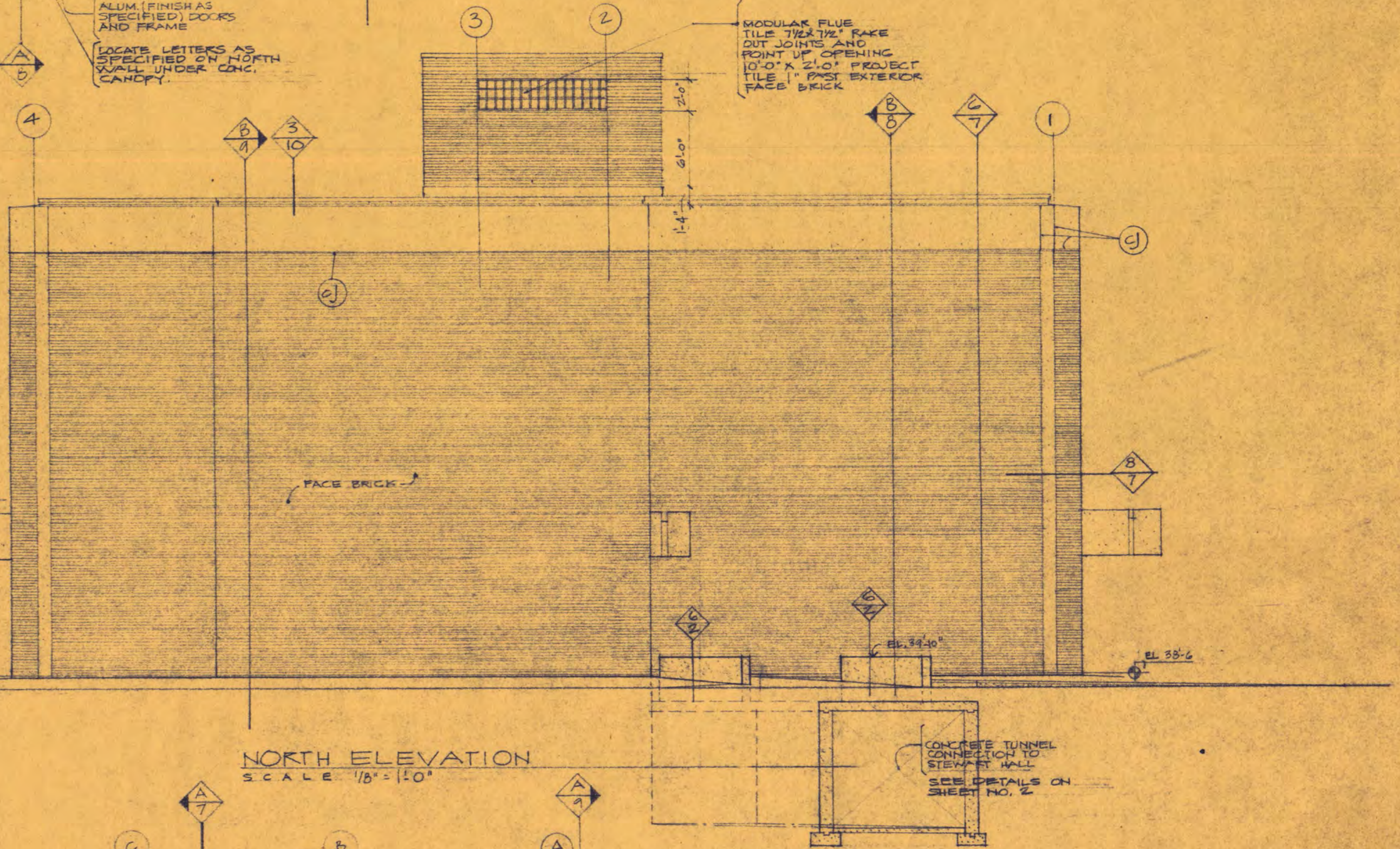
WEST ELEVATION  
SCALE 1/8" = 1'-0"



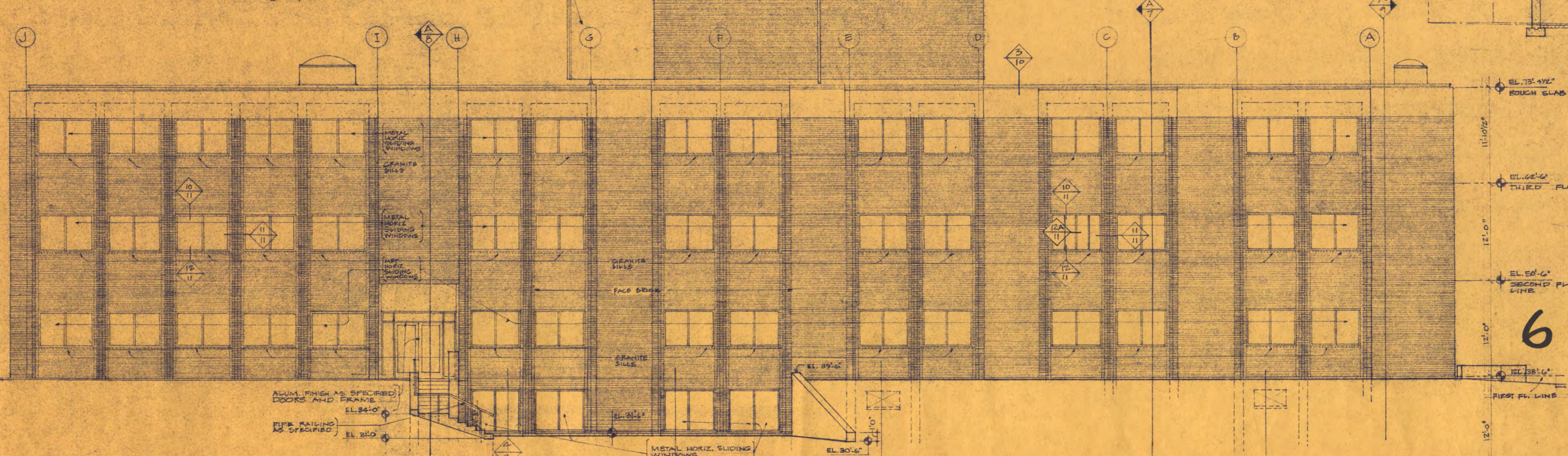
SOUTH ELEVATION  
SCALE 1/8" = 1'-0"



NORTH ELEVATION OF CONCRETE STAIR  
SEE PLAN



NORTH ELEVATION  
SCALE 1/8" = 1'-0"



EAST ELEVATION  
SCALE 1/8" = 1'-0"

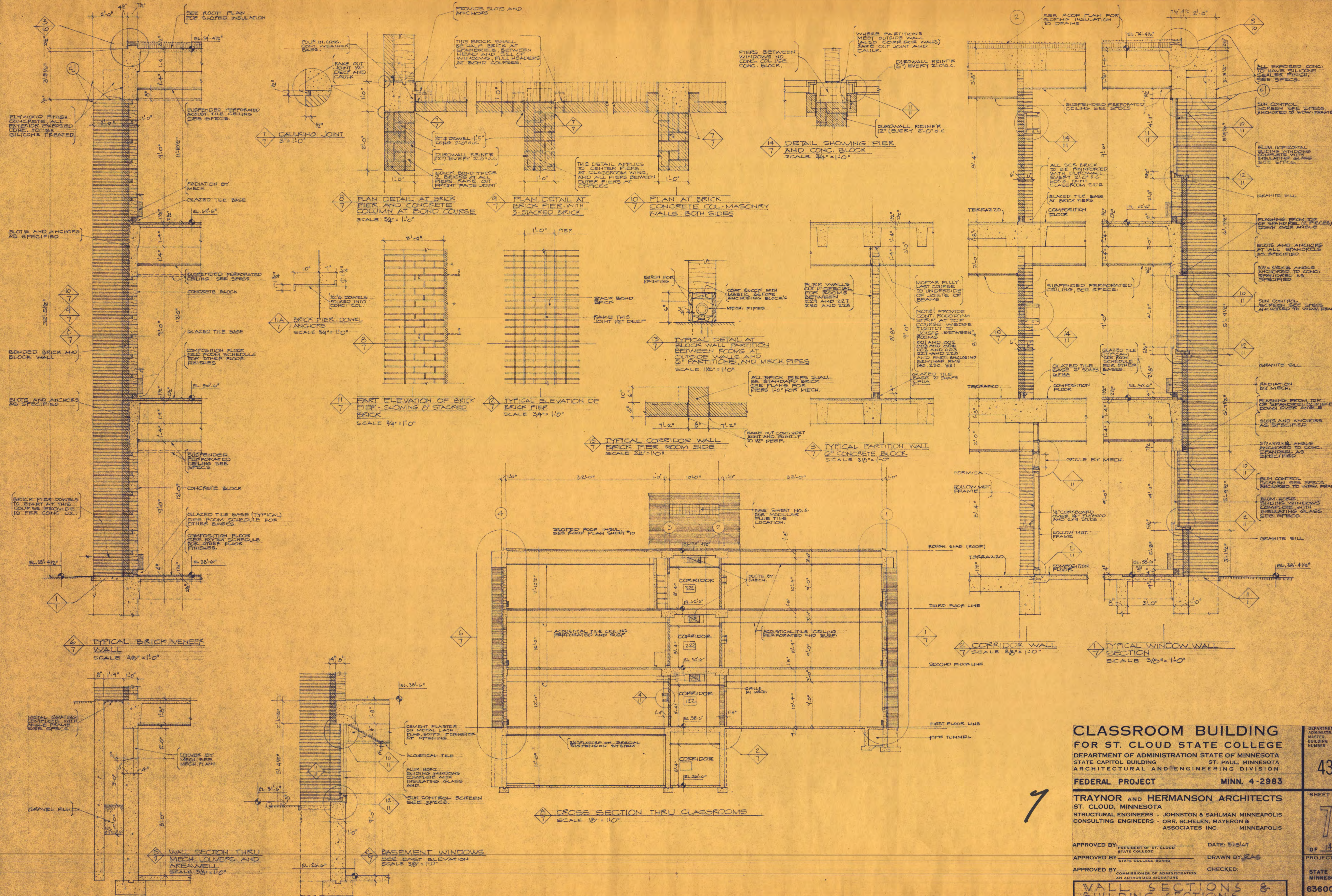
**CLASSROOM BUILDING**  
FOR ST. CLOUD STATE COLLEGE  
DEPARTMENT OF ADMINISTRATION STATE OF MINNESOTA  
STATE CAPITOL BUILDING ST. PAUL MINNESOTA  
ARCHITECTURAL AND ENGINEERING DIVISION  
**FEDERAL PROJECT** MINN. 4-2983

**TRAYNOR AND HERMANSON ARCHITECTS**  
ST. CLOUD, MINNESOTA  
STRUCTURAL ENGINEERS - JOHNSTON & SAHLMAN MINNEAPOLIS  
CONSULTING ENGINEERS - ORR, SCHELEN, MAYERON & ASSOCIATES INC. MINNEAPOLIS

APPROVED BY \_\_\_\_\_ DATE: 5/15/67  
APPROVED BY \_\_\_\_\_ DRAWN BY: RAS  
APPROVED BY \_\_\_\_\_ CHECKED: \_\_\_\_\_  
COMMISSIONER OF ADMINISTRATION  
AN AUTHORIZED SIGNATURE

**EXTERIOR ELEVATIONS**

DEPARTMENT OF ADMINISTRATION  
BUILDING NUMBER  
**43**  
SHEET NO.  
**6**  
OF 14  
PROJECT NO.  
STATE OF MINNESOTA  
**6360090**



**CLASSROOM BUILDING**  
**FOR ST. CLOUD STATE COLLEGE**  
 DEPARTMENT OF ADMINISTRATION STATE OF MINNESOTA  
 STATE CAPITOL BUILDING ST. PAUL, MINNESOTA  
 ARCHITECTURAL AND ENGINEERING DIVISION

**FEDERAL PROJECT MINN. 4-2983**

**TRAYNOR and HERMANSON ARCHITECTS**  
 ST. CLOUD, MINNESOTA  
 STRUCTURAL ENGINEERS - JOHNSTON & SAHLMAN MINNEAPOLIS  
 CONSULTING ENGINEERS - ORR, SCHELEN, MAYERON & ASSOCIATES INC. MINNEAPOLIS

APPROVED BY: \_\_\_\_\_ DATE: 5/15/47  
 PRESIDENT OF ST. CLOUD STATE COLLEGE  
 APPROVED BY: \_\_\_\_\_ DRAWN BY: RAS  
 STATE COLLEGE BOARD  
 APPROVED BY: \_\_\_\_\_ CHECKED: \_\_\_\_\_  
 COMMISSIONER OF ADMINISTRATION  
 AN AUTHORIZED SIGNATURE

DEPARTMENT OF ADMINISTRATION  
 MASTER BUILDING NUMBER  
**43**

SHEET NO.  
**7**

OF 14  
 PROJECT NO.  
 STATE OF MINNESOTA  
**6360090**

7

**WALL SECTIONS & BUILDING SECTIONS**