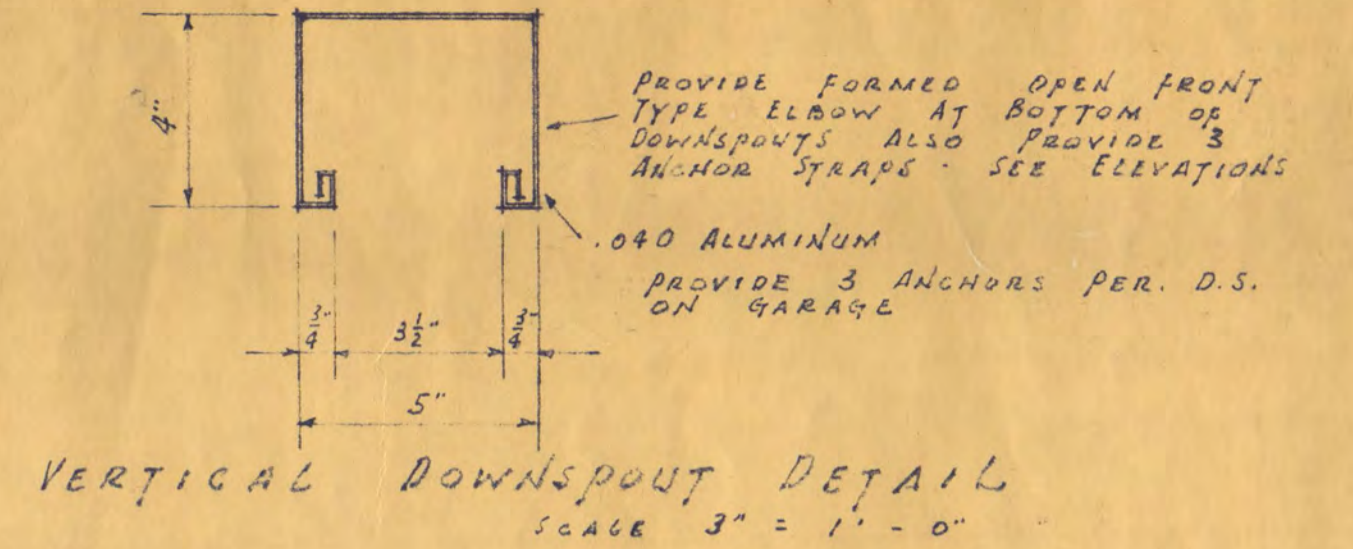
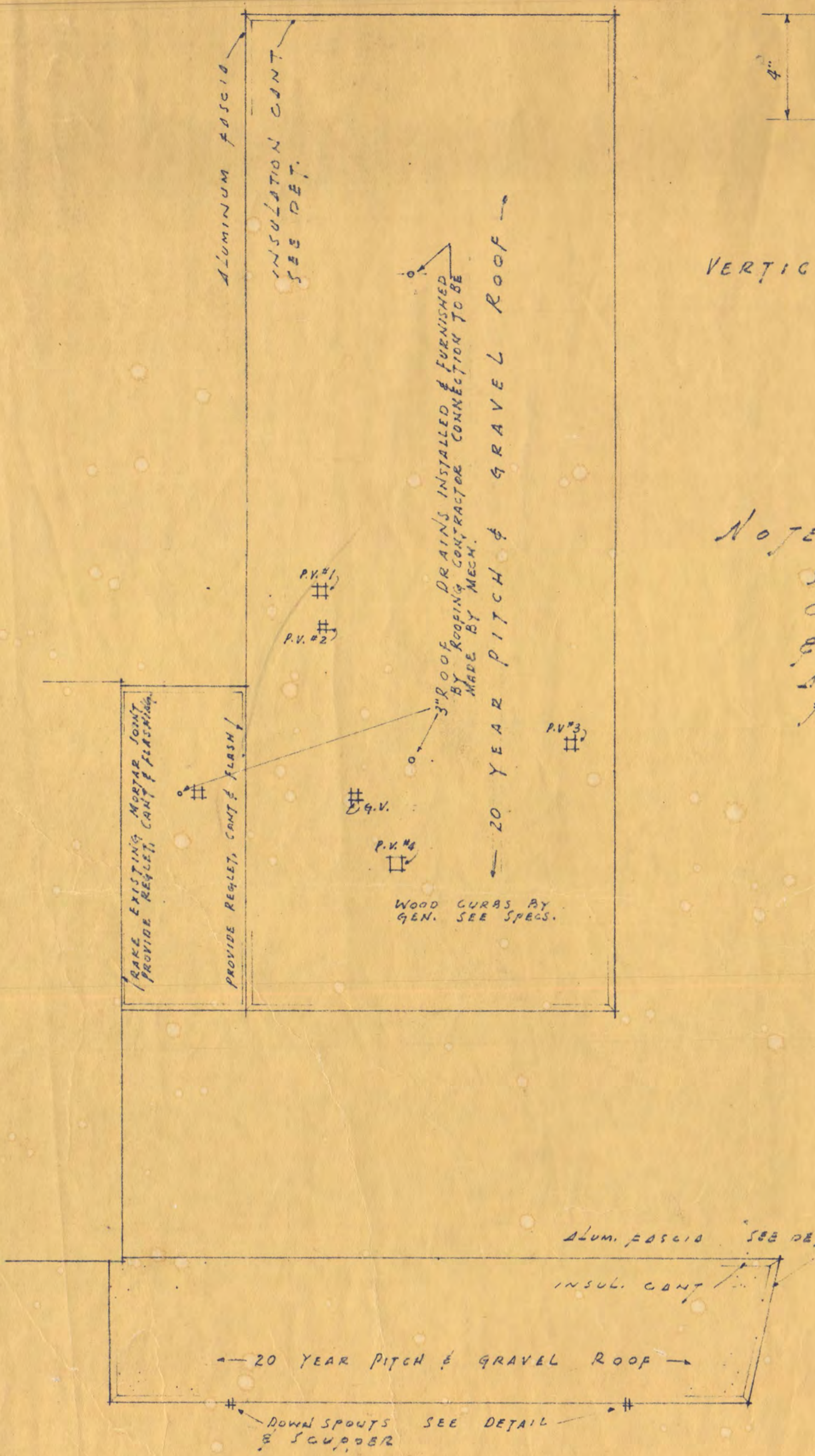
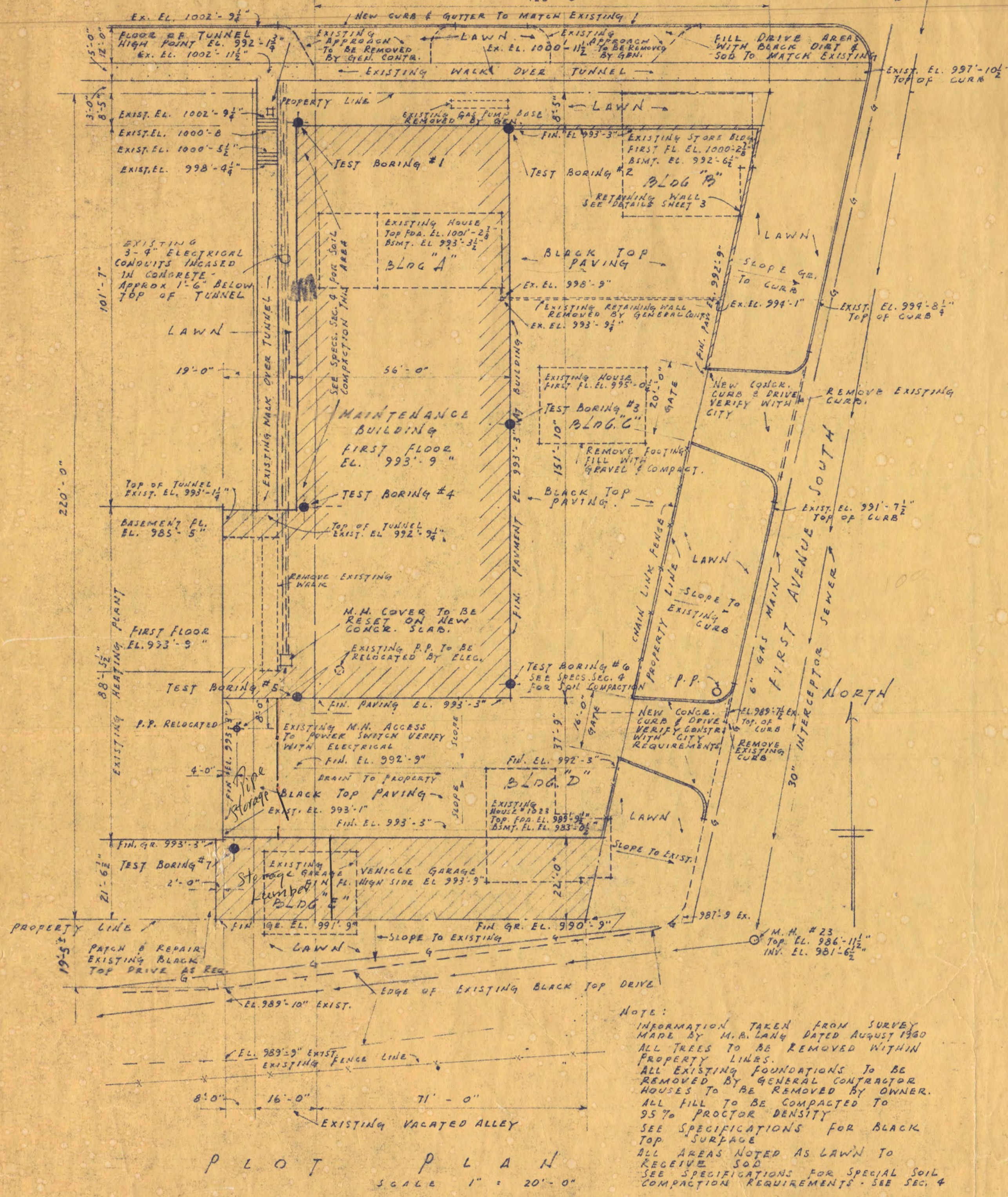


M.M. #17 AT 2ND AVE. S.
107TH ST. EL. 1012'-9"

NOTE: M.M. #24
CORNER TO 1ST AVE. N.
30'-0" TOP EL. 993'-11"
INV. EL. 983'-12"



NOTE:
SEE SPECIFICATIONS FOR
COMPLETE SOIL TEST DATA
& TEST BORING INFORMATION
AS PROVIDED BY SOILS
TESTING LABORATORY.

MATERIALS INDICATION

[Symbol]	CONCRETE
[Symbol]	CONCRETE BLOCK
[Symbol]	BRICK
[Symbol]	WOOD
[Symbol]	EARTH
[Symbol]	INSULATION
[Symbol]	EXISTING BUILDING
[Symbol]	TILE

INDEX TO PLANS

SHEET NO.	DESCRIPTION
1.	PLOT PLAN - TITLE SHEET
2.	FIRST FLOOR PLAN
3.	FOUNDATION & FOOTING PLAN
4.	ELEVATIONS
5.	ROOF FRAMING PLAN
6.	WALL SECTIONS
7.	VEHICLE STORAGE UNIT - PLANS & ELEV.
8.	SCHEDULES & CABINET DETAILS

MAINTENANCE & SERVICE BUILDING

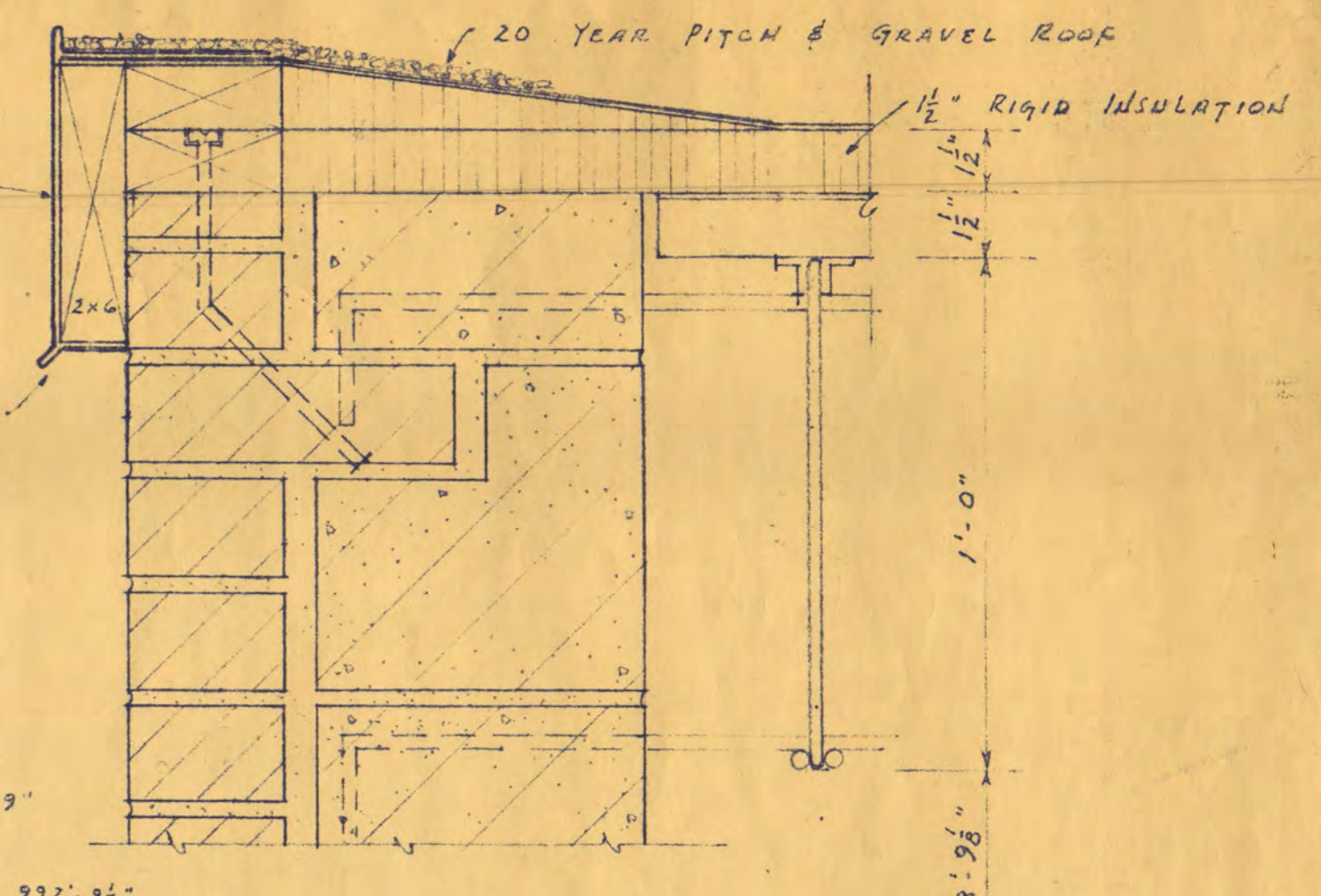
ST. CLOUD STATE COLLEGE

Official Contract Copy

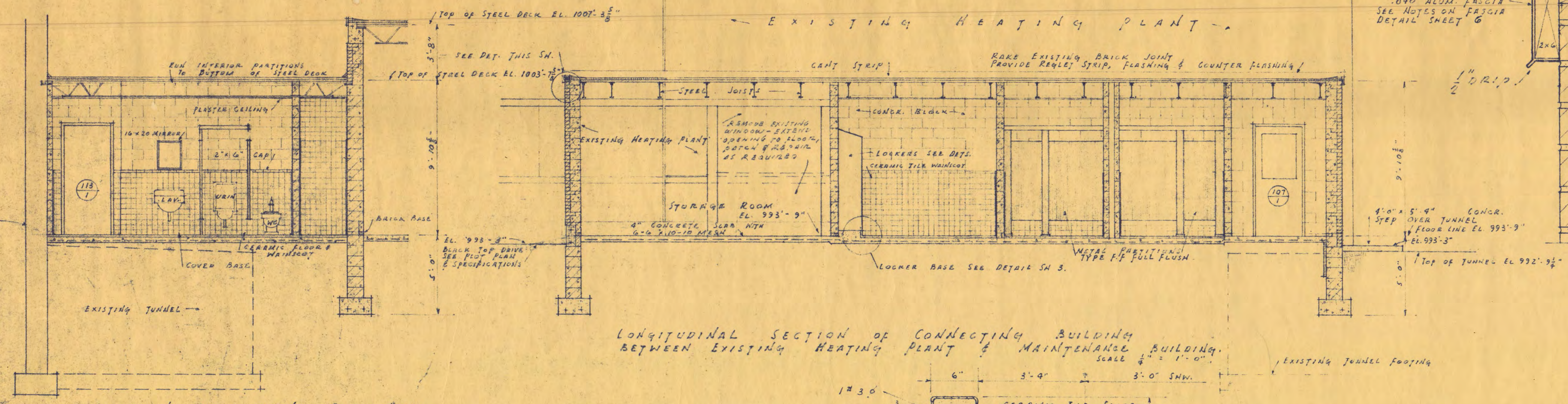
I hereby certify that the plan, specification, or report was prepared by me or under my direct supervision and that I am a duly Registered Architect under the laws of the State of Minnesota.

Virgil E. Siddens
Date: March 1964 No. 2212

THE OFFICIAL SIGNATURES THAT APPEAR ON SHEET 1 SHALL APPLY TO THE FOLLOWING SHEETS: 1, 2, 3, 4, 5, 6, 7, & 8 FOR THIS STATE PROJECT NO. 3463		DEPT. OF ADMINISTRATION STATE OF MINNESOTA ROOM 120 STATE CAPITOL BUILDING ST. PAUL, MINN. ARCHITECTURAL AND ENGINEERING DIVISION A. J. NELSON, STATE ARCHITECT	
DATE: <u>5-20-64</u>	APPROVED BY: <i>George H. Buhl</i>	DATE: <u>5-20-64</u>	APPROVED BY: <i>Virgil E. Siddens</i>
REVISION: <u>1</u>	APPROVED BY: <i>Virgil E. Siddens</i>	REVISION: <u>1</u>	APPROVED BY: <i>Virgil E. Siddens</i>
DRAWN BY: <u>EPS</u>	AGENCY HEAD: <i>Virgil E. Siddens</i>	CHECKED BY: <u>EPS</u>	APPROVED BY: <i>Virgil E. Siddens</i>
CHECKED BY: <u>EPS</u>	COMMISSIONER OF ADMINISTRATION	CHECKED BY: <u>EPS</u>	AN AUTHORIZED SIGNATURE
VIRGIL E. SIDDENS ARCHITECT SAINT CLOUD, MINNESOTA		SHEET <u>1</u> OF <u>8</u> STATE PROJECT NO. <u>3463</u>	

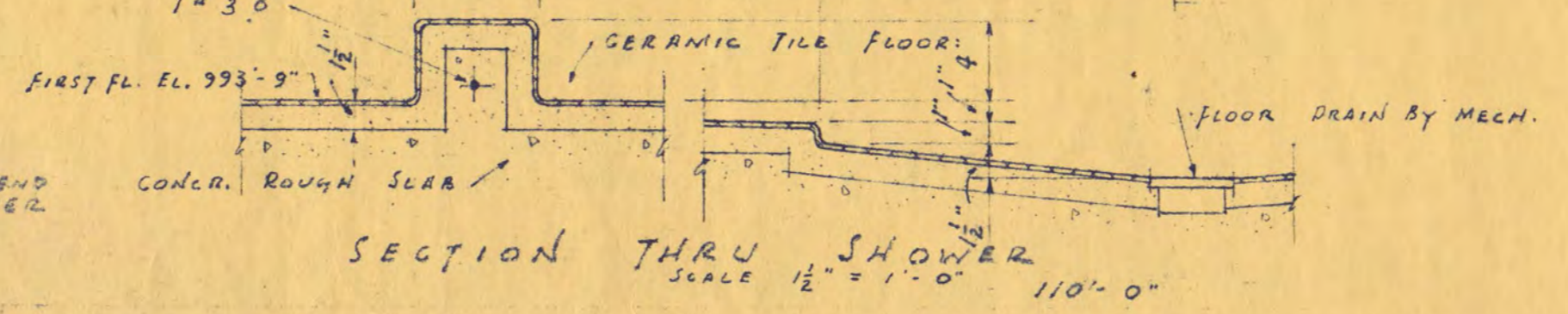


FASCIA DETAIL SECTION
SCALE 3" = 1'-0"

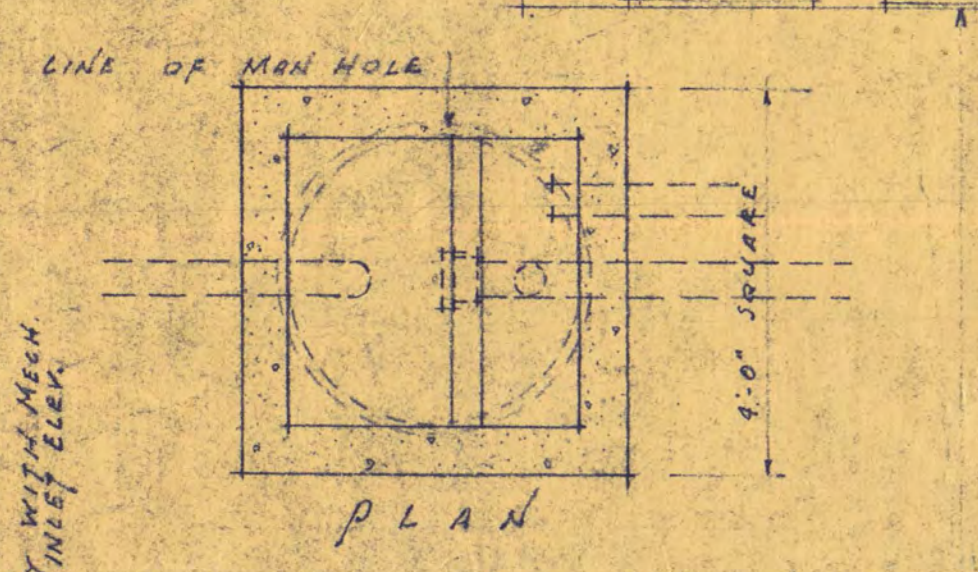


LONGITUDINAL SECTION OF CONNECTING BUILDING
BETWEEN EXISTING HEATING PLANT & MAINTENANCE BUILDING
SCALE 1/2" = 1'-0"

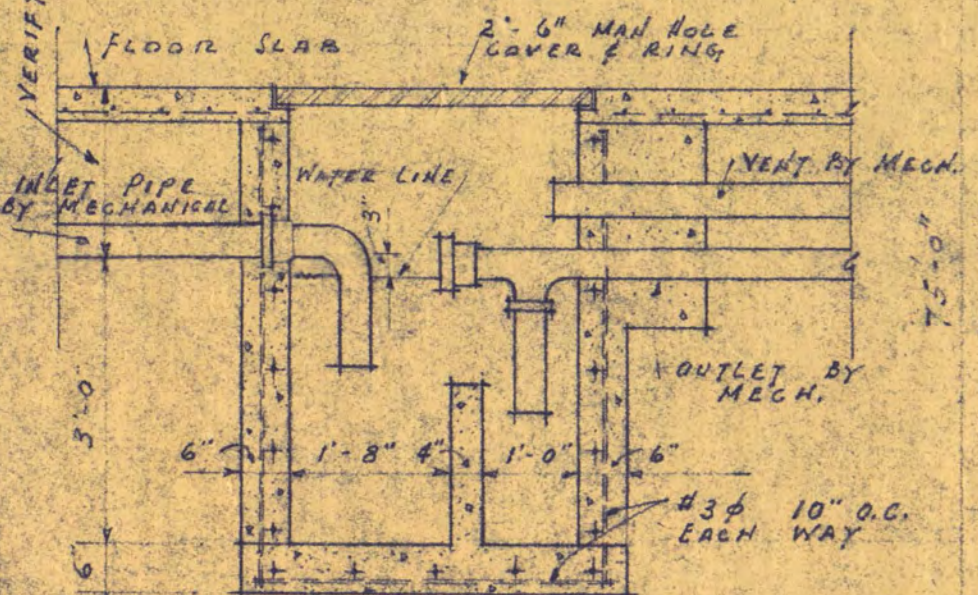
SECTION THRU MEN'S ROOM #113
SCALE 1/2" = 1'-0"



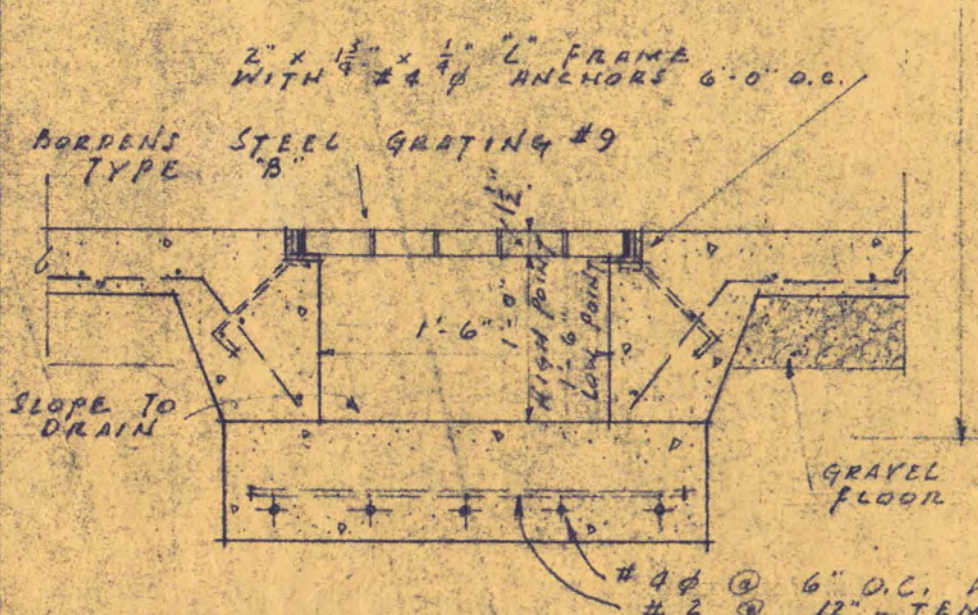
SECTION THRU SHOWER
SCALE 1/2" = 1'-0"



PLAN

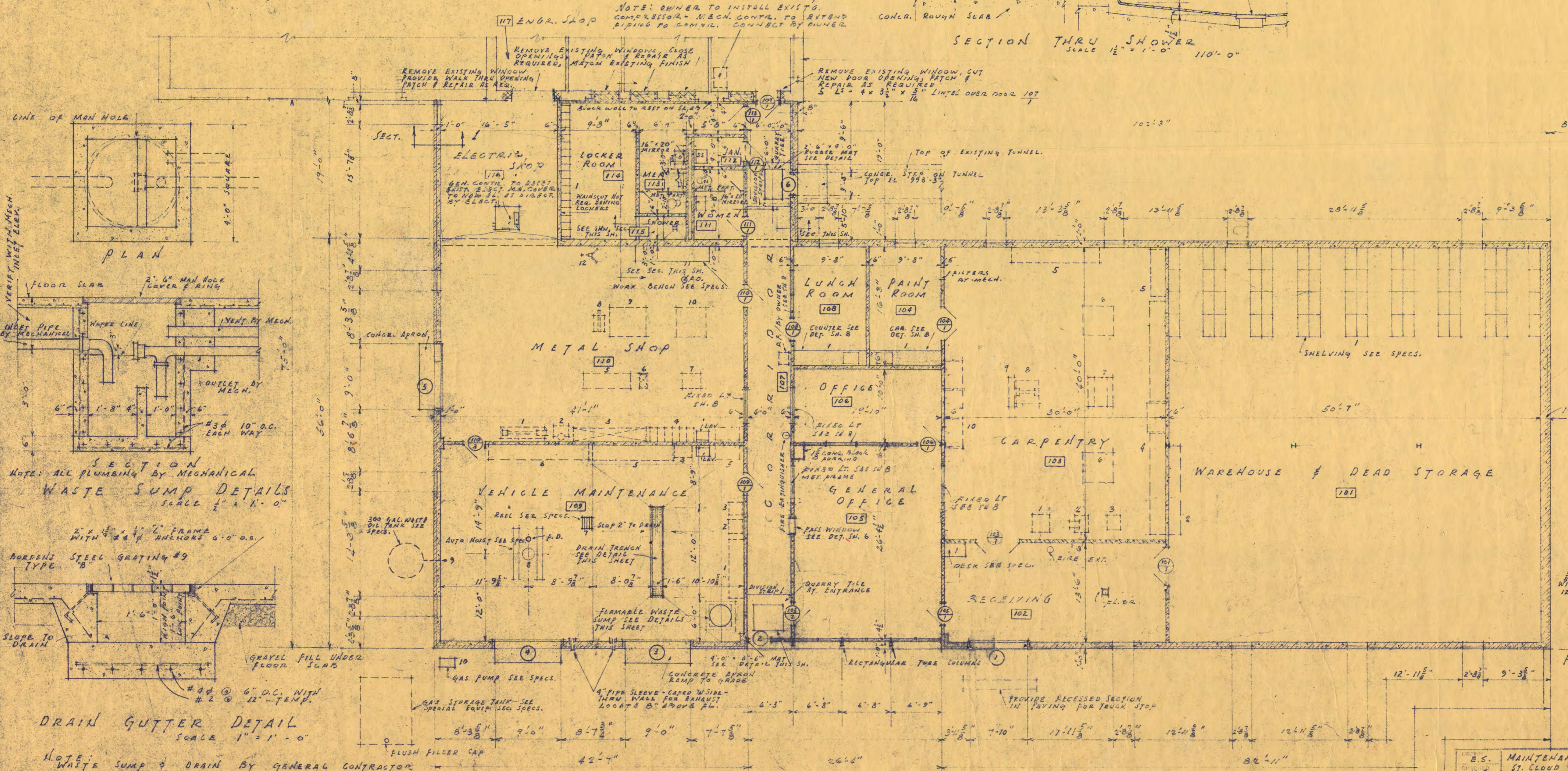


SECTION WASTE SUMP DETAILS
SCALE 1/2" = 1'-0"



DRAIN GUTTER DETAIL
SCALE 1" = 1'-0"

NOTE: WASTE SUMP & DRAIN BY GENERAL CONTRACTOR PIPING & LOOK-UP BY MECHANICAL CONTR.

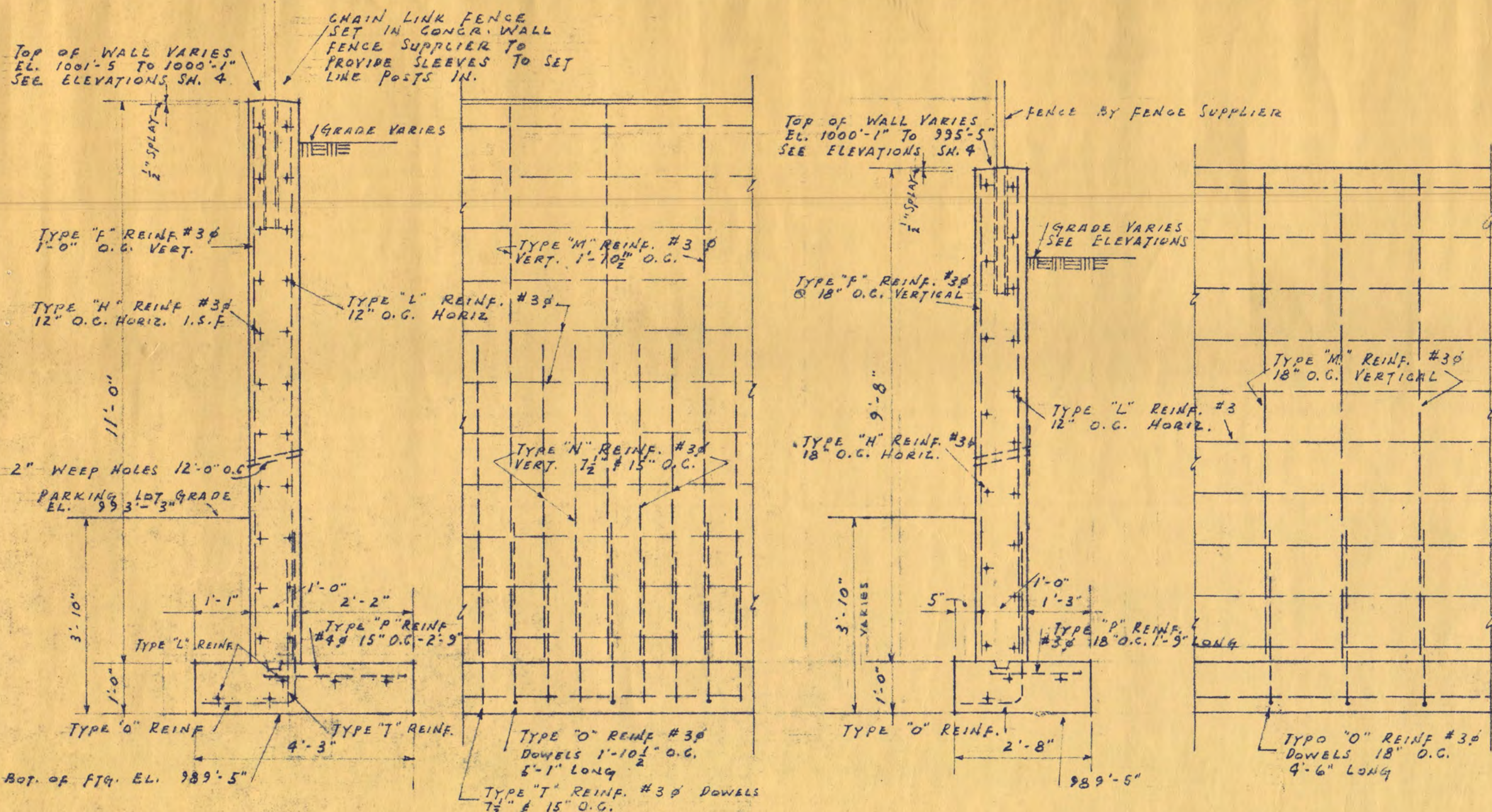


EQUIPMENT & FURNISHING SCHEDULE

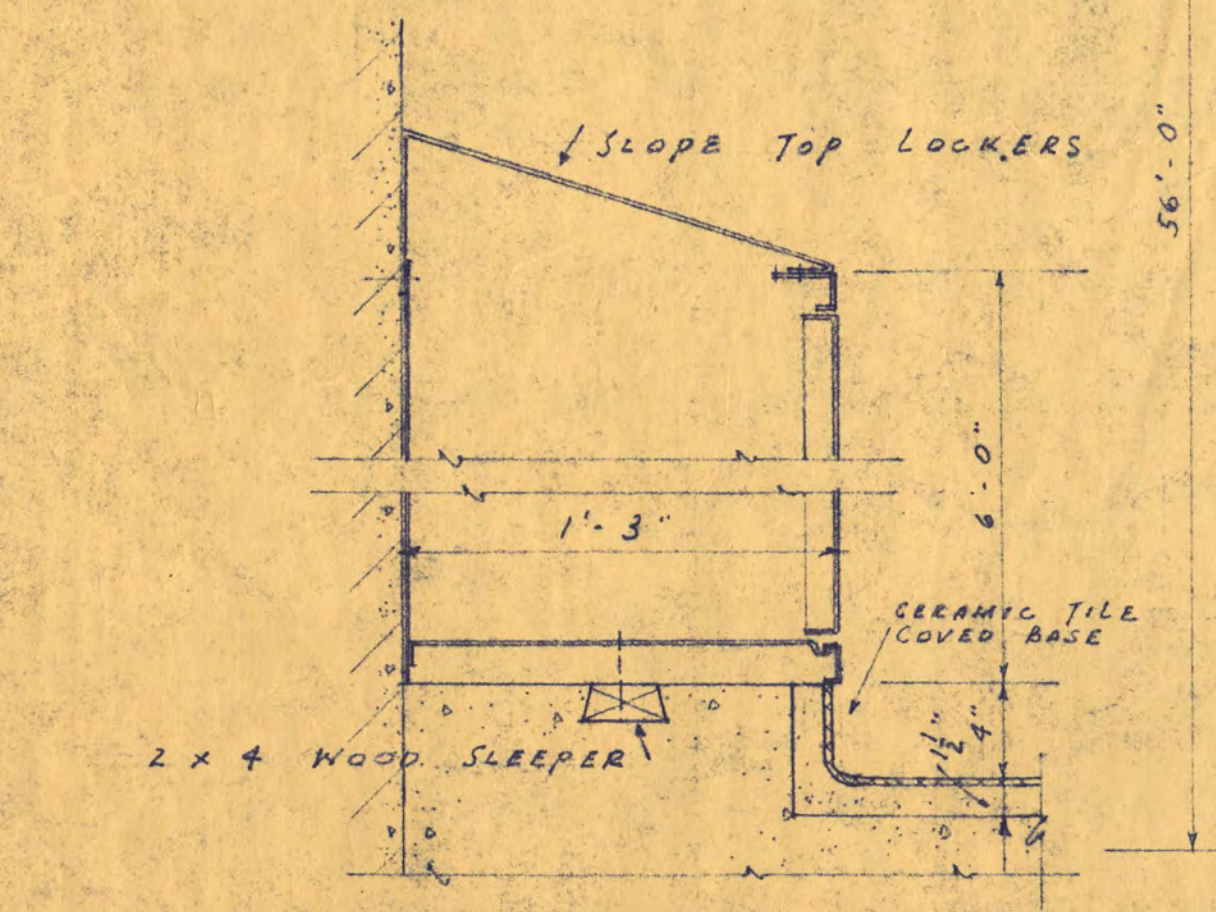
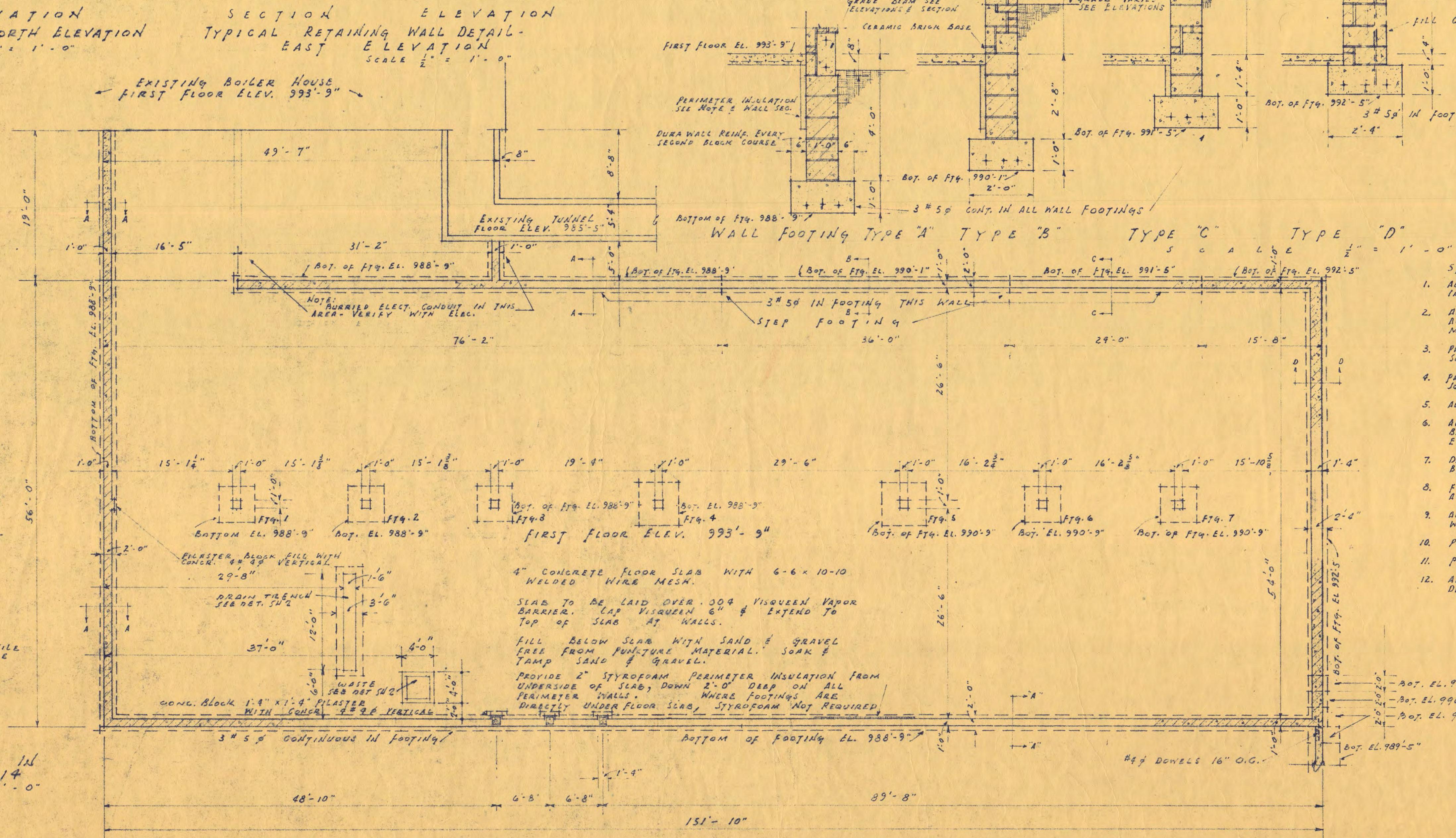
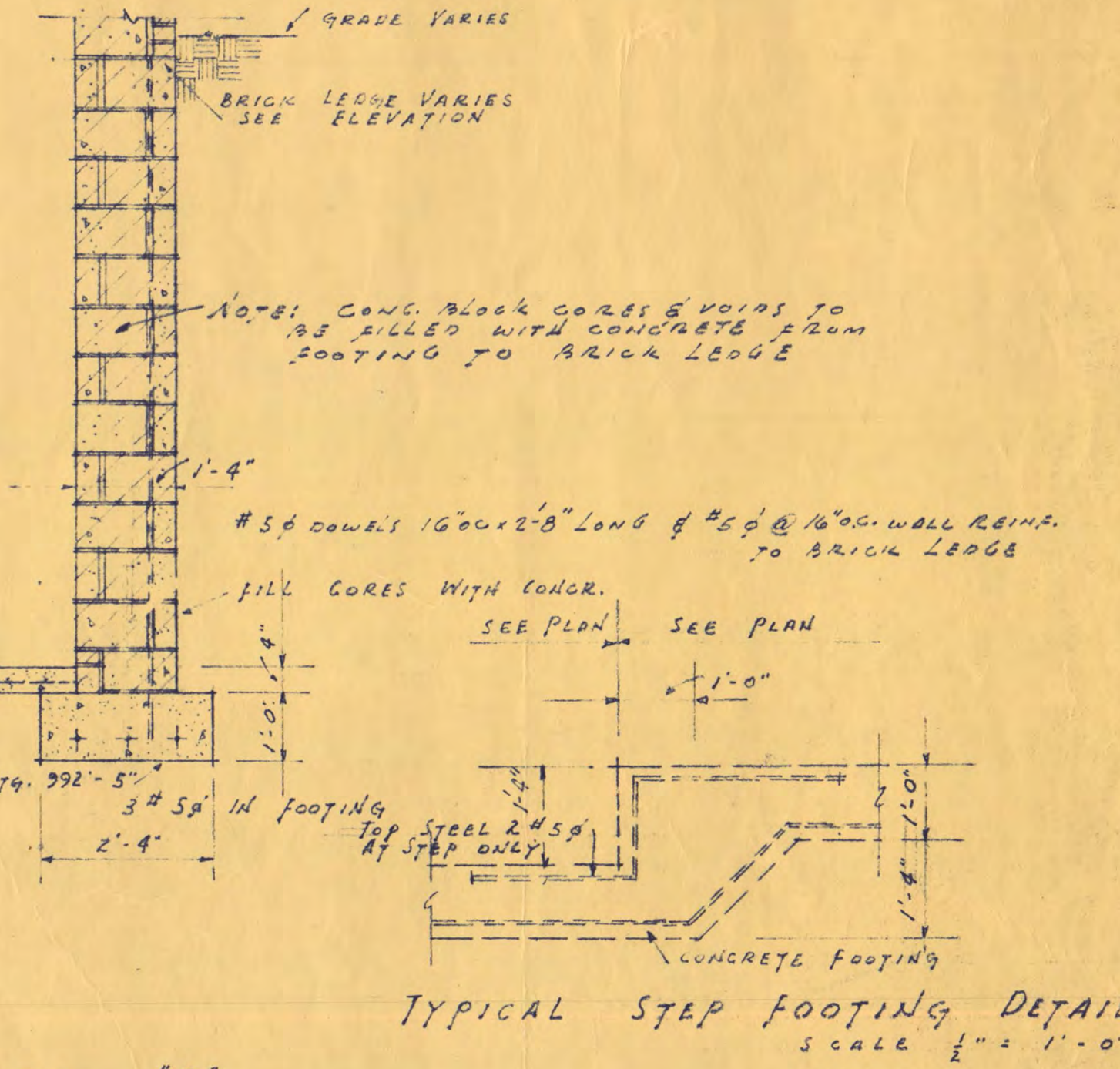
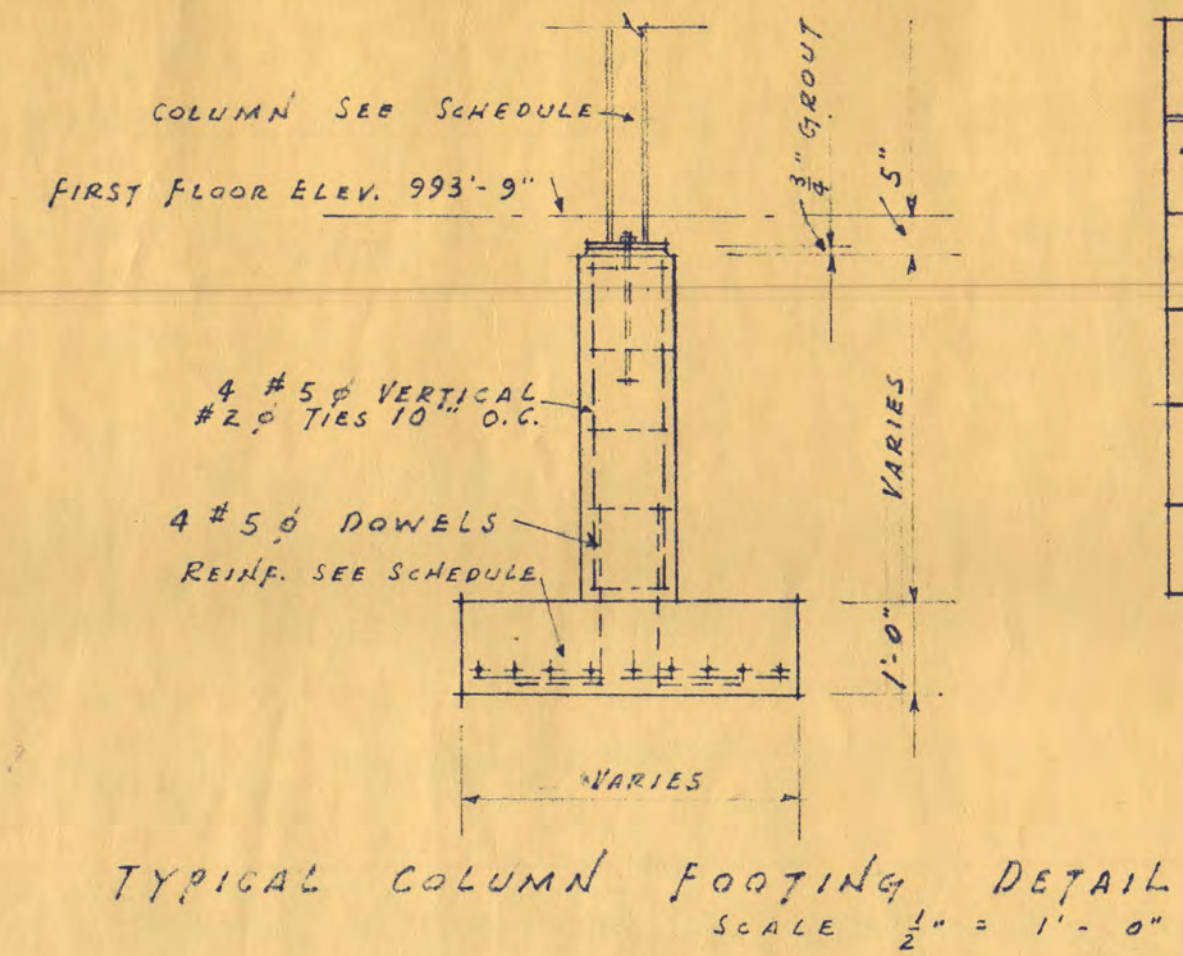
- 101 WAREHOUSE & DEAD STORAGE
 - 1. STORAGE SHELVING
 - 2. BIN STORAGE N.I.G.
- 102 RECEIVING
 - 1. CHECK DESK
- 103 CARPENTRY
 - 1. ADDITIONAL EQUIPMENT SPACE
 - 2. BAND SAW N.I.G.
 - 3. DRILL PRESS N.I.G.
 - 4. RADIAL SAW BENCH - DRAWERS UNDER N.I.G.
 - 5. STORAGE CABINET N.I.G.
 - 6. WORK BENCH N.I.G.
 - 7. CIRCLE SAW N.I.G.
 - 8. PLANER N.I.G.
 - 9. JOINER N.I.G.
 - 10. LUMBER STORAGE
- 104 PAINT ROOM
 - 1. COUNTER
- 105 GENERAL OFFICE
- 106 OFFICE
- 107 CORRIDOR
- 108 LUNCH ROOM
 - 1. COUNTER
- 109 VEHICLE MAINTENANCE
 - 1. ADDITIONAL EQUIPMENT SPACE N.I.G.
 - 2. GAS WELDING EQUIPMENT N.I.G.
 - 3. ARC WELDING EQUIPMENT N.I.G.
 - 4. TOOLS E. BENCH N.I.G.
 - 5. EQUIPMENT E. BENCH N.I.G.
 - 6. BENCH & EQUIPMENT N.I.G.
 - 7. 4 OVERHEAD REELS FOR MOTOR OIL, TRANSMISSION FLUID, GREASE, & COMPRESSED AIR.
 - 8. 2 1/2 TON AUTO HOIST
 - 9. 300 GAL OIL DRAIN TANK
 - 10. 2000 GAS TANK & METERING PUMP
- 110 METAL SHOP
 - 1. METAL LATHE N.I.G.
 - 2. DRILL PRESS N.I.G.
 - 3. METAL TABLE N.I.G. EXHAUST HOOD OVER BY MECH.
 - 4. PIPE FITTING STORAGE BINS N.I.G.
 - 5. GAS WELDING TABLE N.I.G.
 - 6. GAS BOTTLES N.I.G.
 - 7. BREAK N.I.G.
 - 8. POWER HACK SAW N.I.G.
 - 9. STAKE TABLE N.I.G.
 - 10. SHEET METAL SHEAR N.I.G.
 - 11. WIPER BEAM
 - 12. PIPE THREADING MACHINE N.I.G.
- 114 LOCKER ROOM
 - 1. LOCKERS 12' x 15' x 72" NUMBERED 1 THRU 12 SEE SPECS.

FLOOR DIVISION STRIP DETAIL SCALE 3" = 1'-0"
FLOOR MAT DETAIL SCALE 3" = 1'-0"

DEPT. OF ADMINISTRATION STATE OF MINNESOTA ROOM 120 STATE CAPITOL BUILDING ST. PAUL, MINN. ARCHITECTURAL AND ENGINEERING DIVISION A. J. NELSON, STATE ARCHITECT		DATE REVISION DRAWN BY CHECKED BY	APPROVED BY APPROVED BY APPROVED BY	SHEET OF STATE PROJECT NO.
B.S. MAINTENANCE & SERVICE BLDG. 5909 ST. CLOUD STATE COLLEGE MAR. 1966 ST. CLOUD, MINN.		APPROVED BY APPROVED BY APPROVED BY	SHEET OF STATE PROJECT NO.	
VIRGIL E. SIDDENS ARCHITECT SAINT CLOUD, MINNESOTA		APPROVED BY APPROVED BY APPROVED BY	SHEET OF STATE PROJECT NO.	



FOOTING SCHEDULE				COLUMN SCHEDULE			
FOOTING NUMBER	SIZE	STEEL	DOWELS	COLUMN NUMBER	CONCR. STUB COL. SIZE	STEEL "H" COLUMN SIZE	STEEL "H" COLUMN BASE PLATE TOP PLATE
1, 2, 3, 6, & 7	4'-0" x 4'-6" x 1'-0"	9 #4 @ 6" O.C. E.W.	4 #5 @	1, 2, 3, 6, & 7	12" x 12"	4 #5 VERT. #2 @ TIES 10"	9" x 9" x 1/2" 6 1/2" x 8" x 1/2"
4 & 5	5'-6" x 5'-6" x 1'-0"	8 #5 @ 6" O.C. E.W.	4 #5 @	4 & 5	12" x 12"	4 #5 VERT. #2 @ TIES 10"	10" x 10" x 3/4" 5" x 8 1/2" x 5/8"
				8, 9, & 10	16" x 16" PILASTER	4 #4 VERT. 3" x 4" x 1/4" TUBE COL.	8" x 8" x 1/2" 8" x 8" x 1/2"



- STRUCTURAL NOTES:
- ALL CONCRETE TO BE 3,750 #10 COMPRESSION IN 28 DAYS.
 - ALL REINFORCING TO BE DETAILED & PLACED ACCORDING TO THE LATEST A.C.I. CODE & MANUAL OF STANDARD PRACTICE.
 - PROVIDE 6/16 x 10/10 WELDED WIRE MESH IN ALL SLABS & WALLS ON GROUND.
 - PROVIDE VERTICAL BULK HEADS & KEY ALL CONSTRUCTION JOINTS ALLOWING ALL REINFORCING TO RUN THROUGH.
 - ALL FOOTINGS TO BE ON UNDISTURBED SOIL.
 - ALL MASONRY WALLS NOT BONDING WITH BRICK HEADERS TO RECEIVE DURA WALL REINFORCING EVERY SECOND BLOCK COURSE.
 - DEPRESS FLOOR SLABS IN ALL AREAS AS REQUIRED BY FLOOR FINISH - SEE ROOM FINISH SCHEDULE.
 - FILL CORES OF CONCRETE BLOCK WITH CONCRETE UNDER ALL BEAM SEATS & BEARING PLATES.
 - ALL EXPOSED BLOCK WORK TO BE LAID IN RUNNING BOND WITH ALL JOINTS TOOLED.
 - PROVIDE A MIN. 8" END BEARING ALL BEAMS.
 - PROVIDE SHOP DRAWINGS & DETAILS FOR APPROVAL.
 - ALL BACK FILL TO BE COMPACTED TO 95% PROCTOR DENSITY.

DEPT. OF ADMINISTRATION STATE OF MINNESOTA
ROOM 120 STATE CAPITOL BUILDING ST. PAUL, MINN.
ARCHITECTURAL AND ENGINEERING DIVISION

A. J. NELSON, STATE ARCHITECT

DATE: _____

REVISED: _____

DRAWN BY: E.P.S.

CHECKED BY: V.E.S.

APPROVED BY: _____ PRES. OF COLLEGE

APPROVED BY: _____ AGENCY HEAD

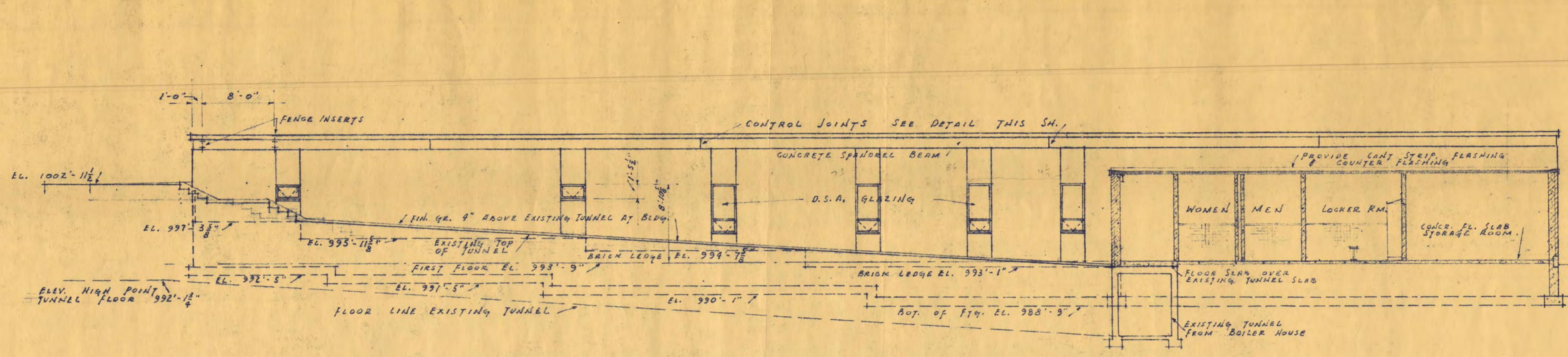
APPROVED BY: _____ COMMISSIONER OF ADMINISTRATION

An Authorized Signature

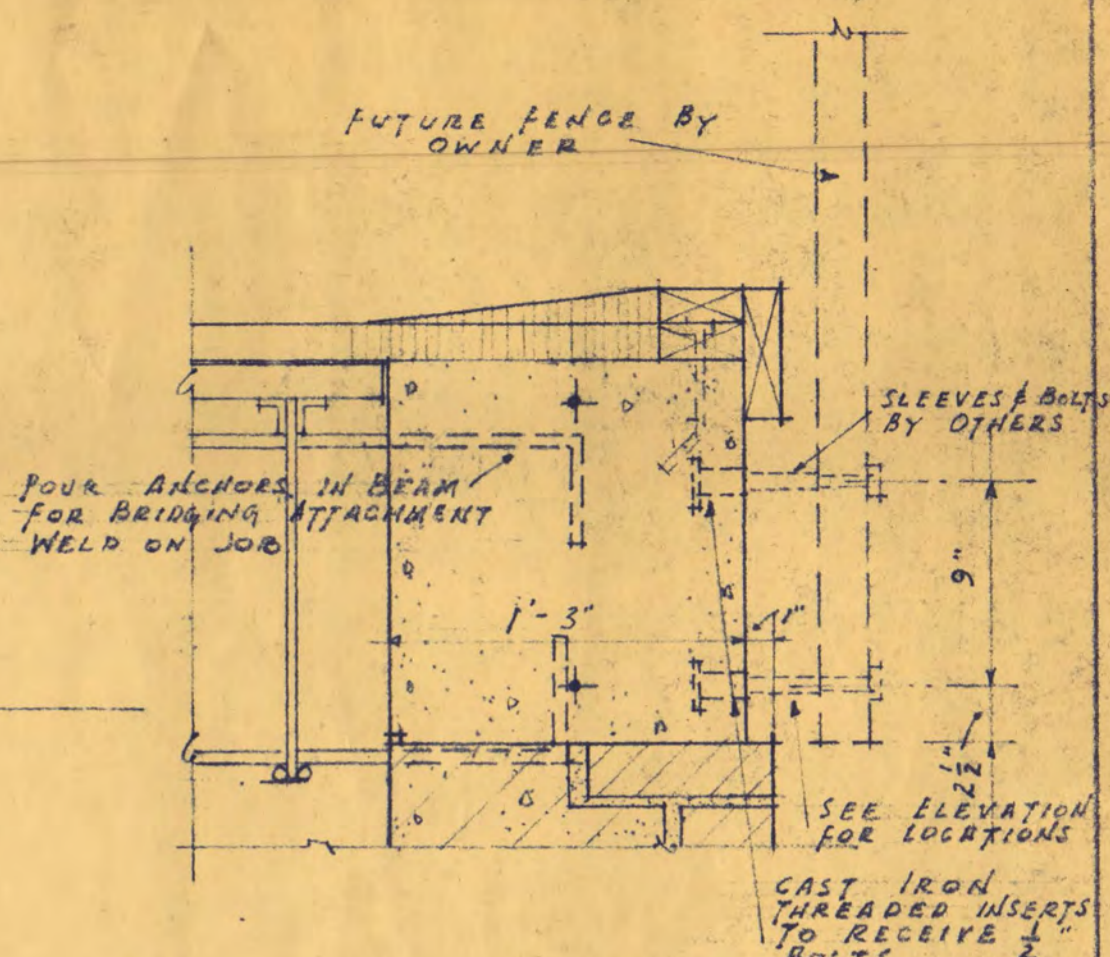
PROJECT NO. 5909
MAR. 1964

SHEET 3 OF 8

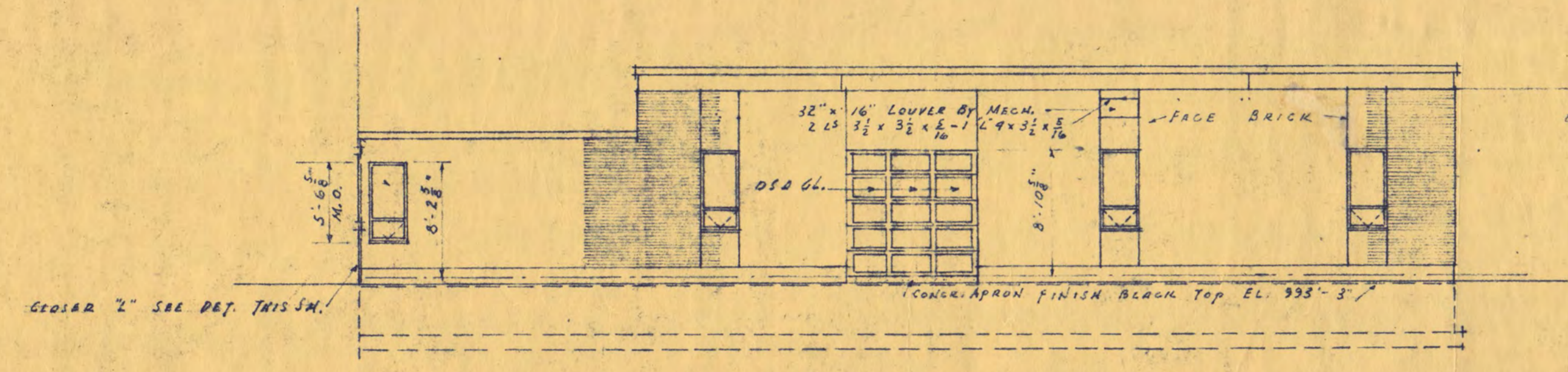
STATE PROJECT NO. 3463



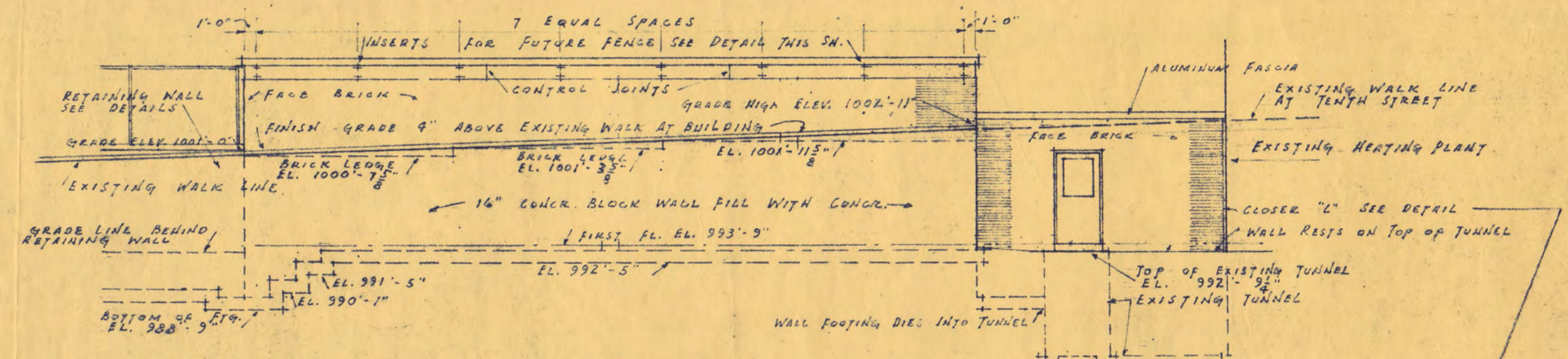
WEST ELEVATION
SCALE 1/2" = 1'-0"



DETAIL OF ANCHORS FOR FUTURE FENCE
SCALE 1/2" = 1'-0"

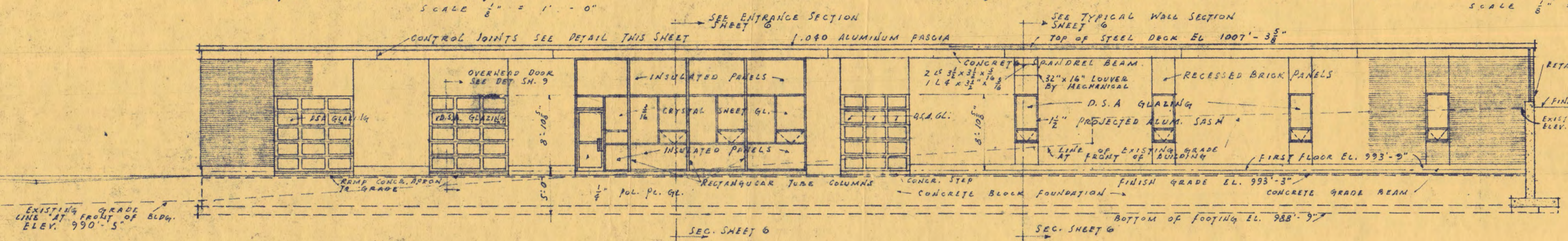


SOUTH ELEVATION
SCALE 1/2" = 1'-0"

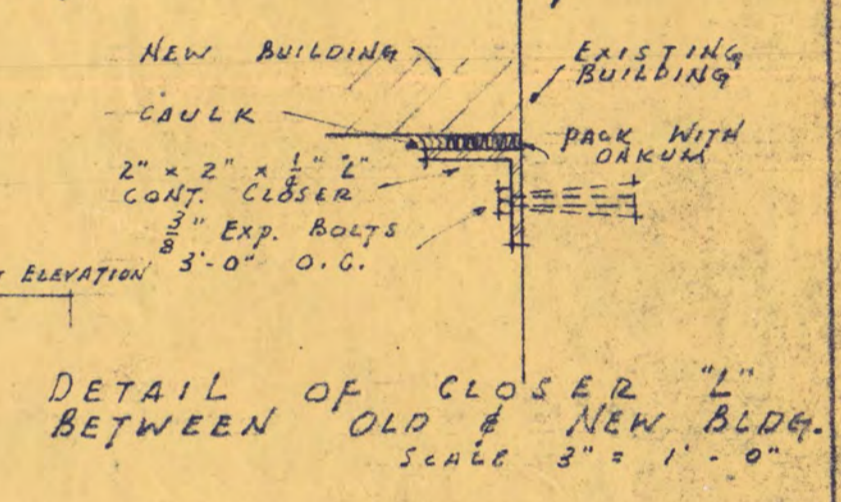


NORTH ELEVATION - SHOWING CONNECTION TO HEATING PLANT
SCALE 1/2" = 1'-0"

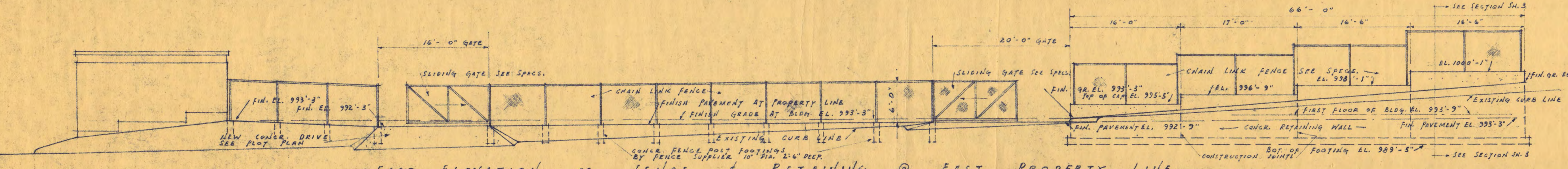
VEHICLE STORAGE BUILDING
SEE PLANS & ELEVATIONS SHEET 8.



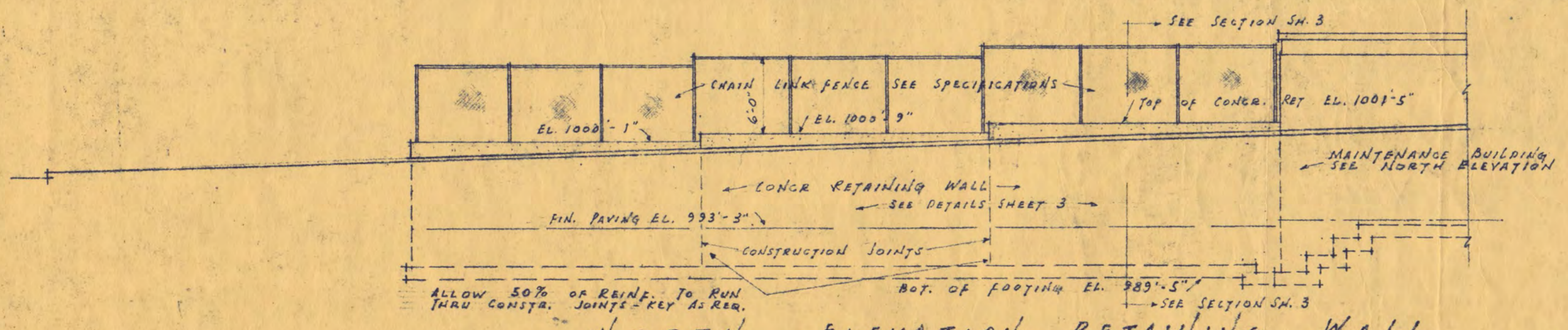
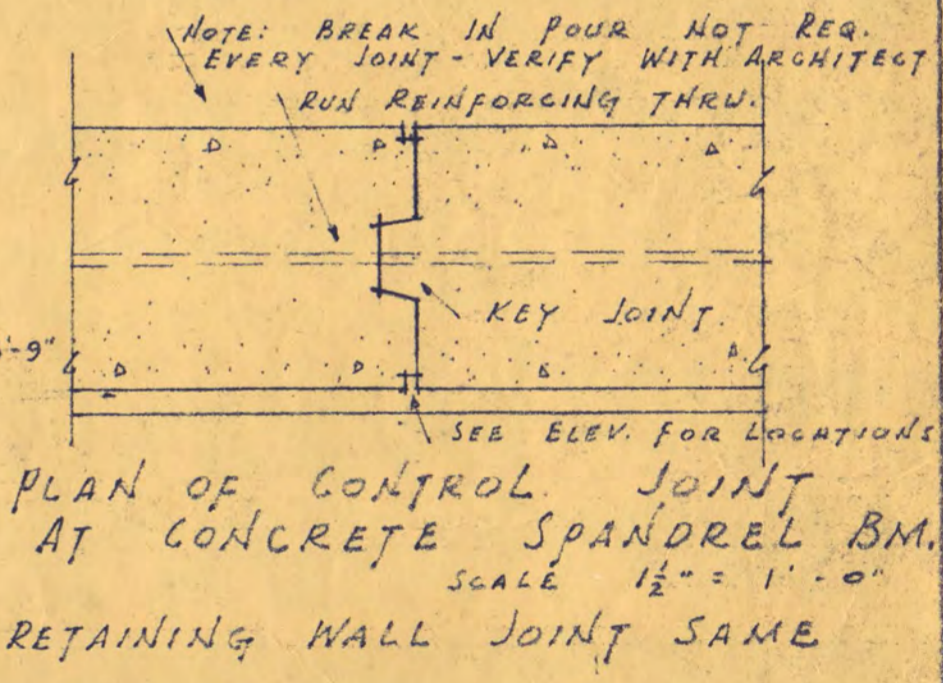
EAST ELEVATION
SCALE 1/2" = 1'-0"



DETAIL OF CLOSER "L" BETWEEN OLD & NEW BLDG.
SCALE 3/4" = 1'-0"

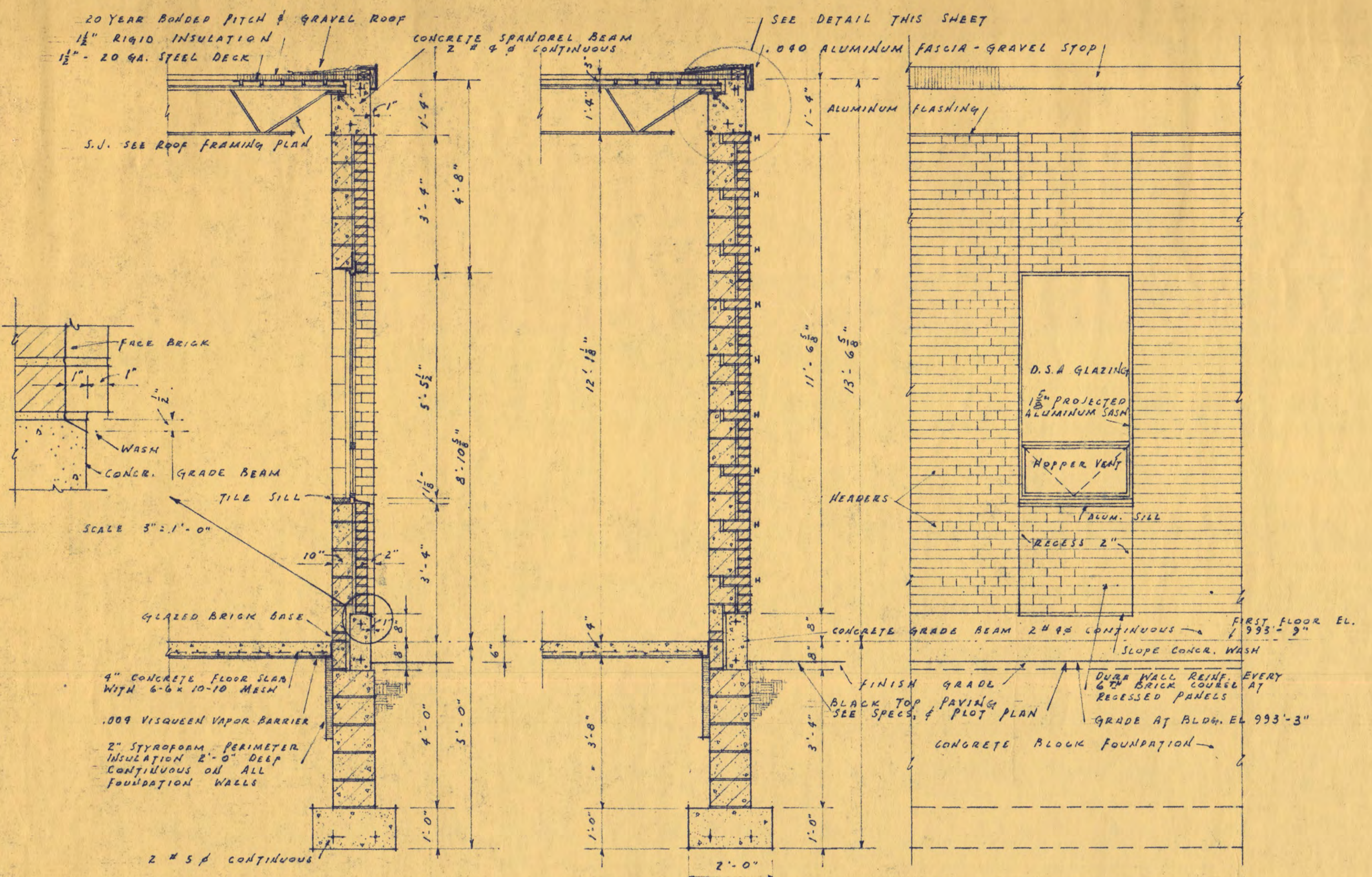


EAST ELEVATION OF FENCE & RETAINING @ EAST PROPERTY LINE
SCALE 1/2" = 1'-0"

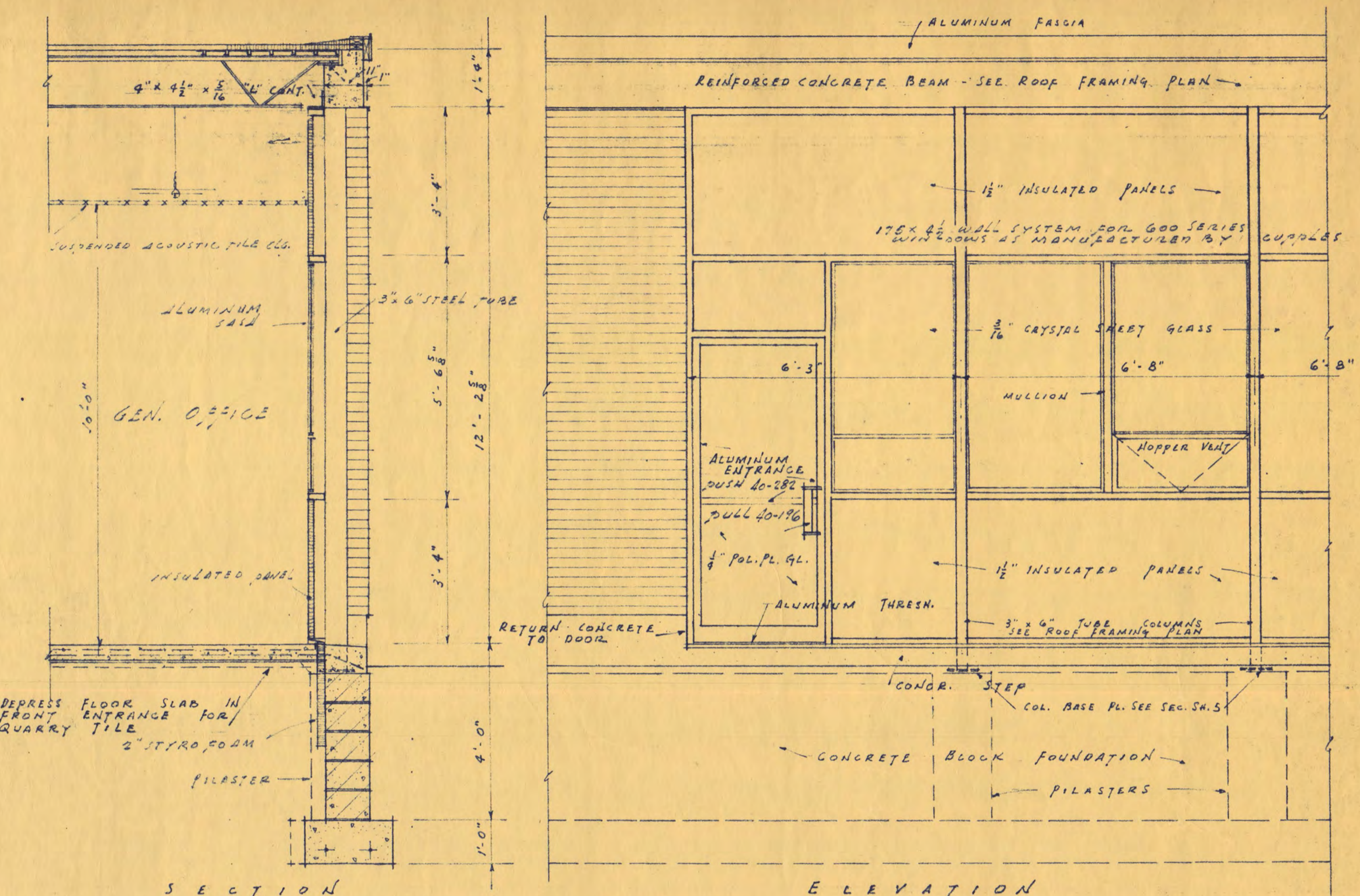


NORTH ELEVATION RETAINING WALL
SCALE 1/2" = 1'-0"

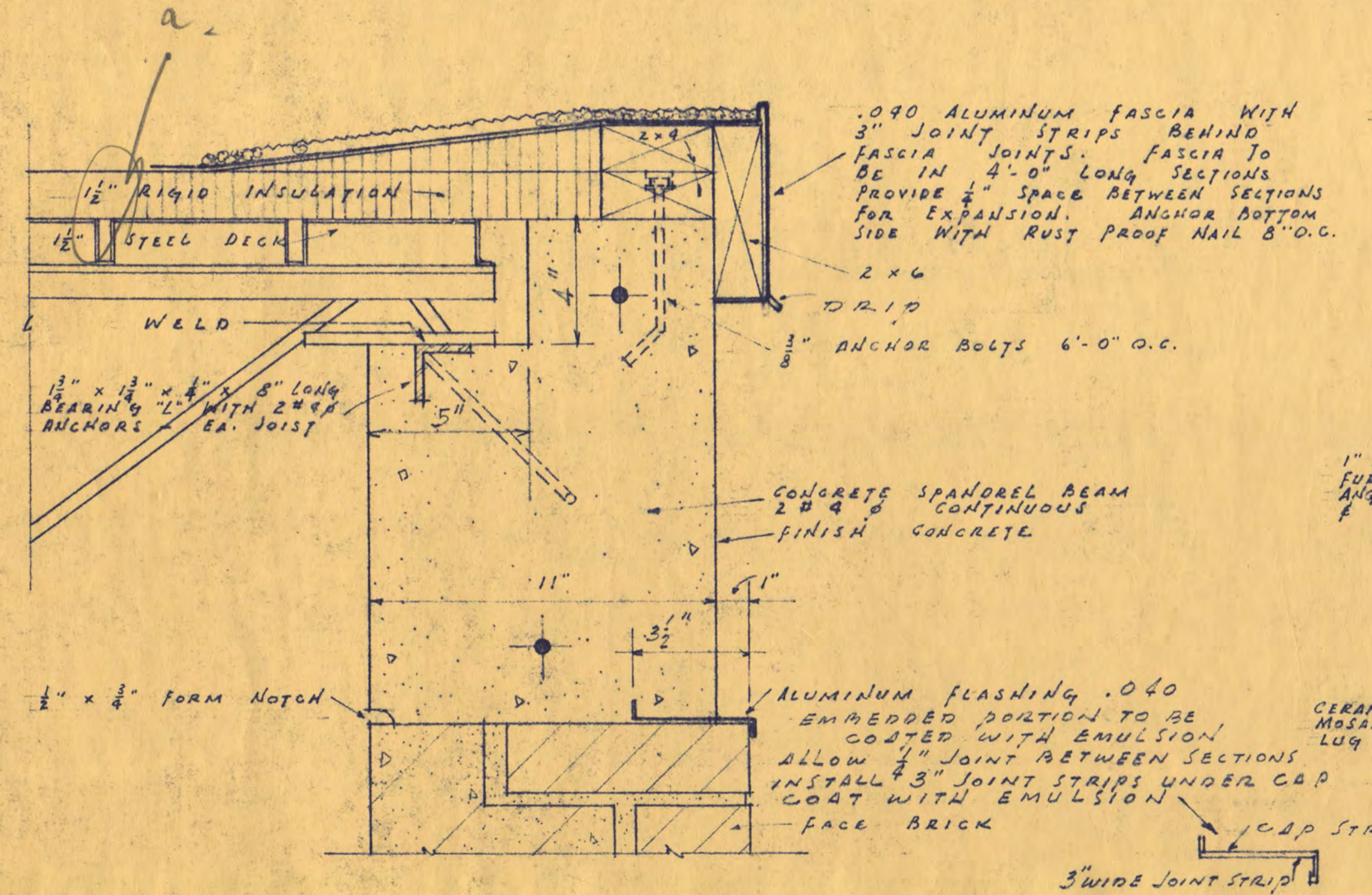
DEPT. OF ADMINISTRATION STATE OF MINNESOTA ROOM 120 STATE CAPITOL BUILDING ST. PAUL, MINN. ARCHITECTURAL AND ENGINEERING DIVISION A. J. NELSON, STATE ARCHITECT		SHEET 46 OF 8	
DATE 5-20-29	APPROVED BY PRES. OF COLLEGE	CHECKED BY VES	STATE PROJECT NO. 3463
DRAWN BY E.P.S.	APPROVED BY AGENCY HEAD	CHECKED BY VES	APPROVED BY COMMISSIONER OF ADMINISTRATION An Authorized Signature
MAINTENANCE & SERVICE BLDG. ST. CLOUD, STATE COLLEGE ST. CLOUD, MINN.		VIRGIL E. SIDDENS ARCHITECT SAINT CLOUD, MINNESOTA	



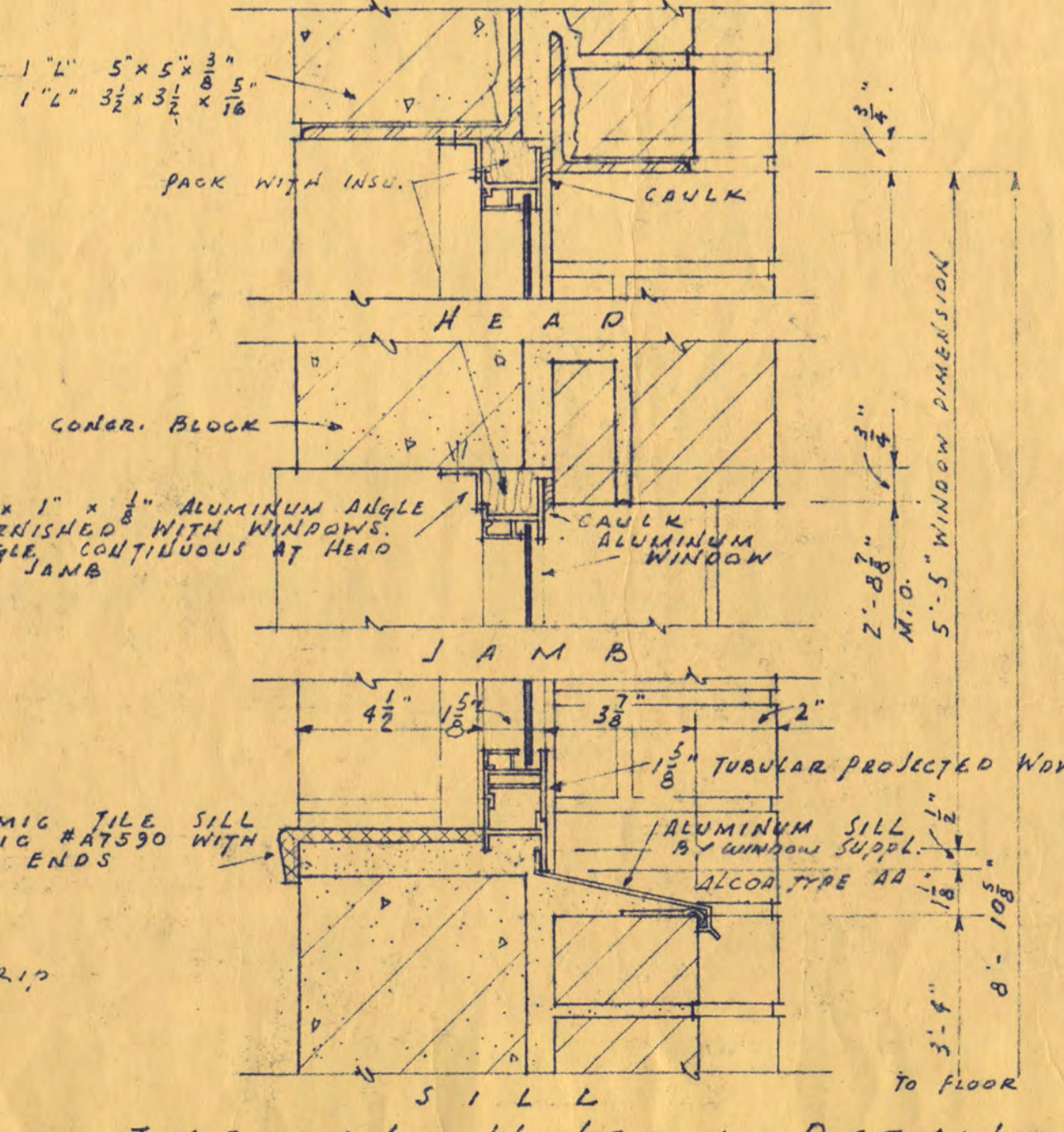
SECTIONS ELEVATION
TYPICAL WALL DETAILS
SCALE 1/2" = 1'-0"



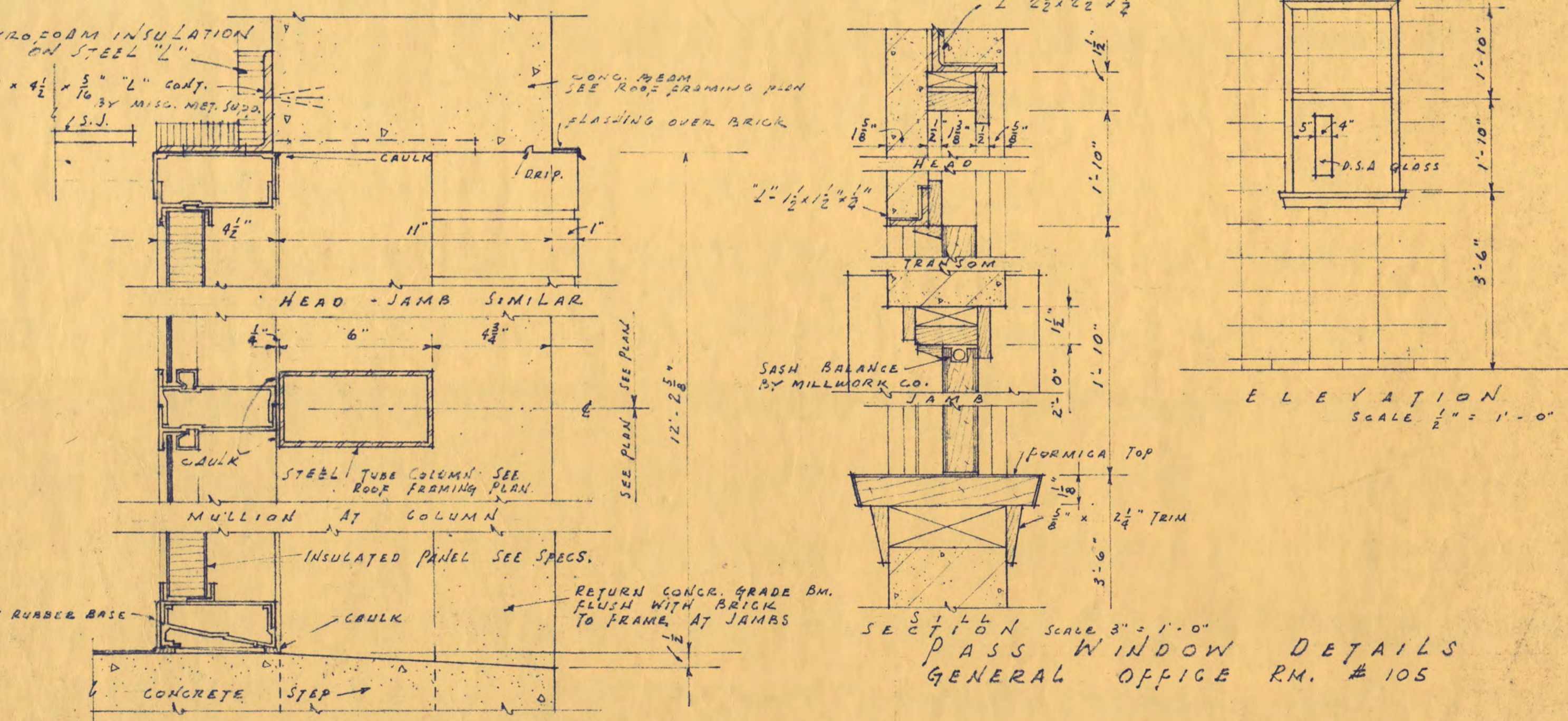
SECTION ELEVATION
FRONT ENTRANCE DETAILS
SCALE 1/2" = 1'-0"



TYPICAL FASCIA DETAIL
SCALE 3" = 1'-0"



TYPICAL WINDOW DETAIL
SCALE 3" = 1'-0"



SECTION ELEVATION
PASS WINDOW DETAILS
GENERAL OFFICE RM. # 105
SCALE 3" = 1'-0"

DEPT. OF ADMINISTRATION STATE OF MINNESOTA ROOM 120 STATE CAPITOL BUILDING ST. PAUL, MINN. ARCHITECTURAL AND ENGINEERING DIVISION	
A. J. NELSON, STATE ARCHITECT	
DATE	APPROVED BY STATE ARCHITECT
REVISED	APPROVED BY COMMISSIONER OF COLLEGE
DRAWN BY	APPROVED BY AGENCY HEAD
CHECKED BY	APPROVED BY COMMISSIONER OF ADMINISTRATION An Authorized Signature

MAINTENANCE & SERVICE BLDG.
ST. CLOUD STATE COLLEGE
ST. CLOUD, MINN.
VIRGIL E. SIDDENS
ARCHITECT
SAINT CLOUD, MINNESOTA

SHEET
OF
8
STATE
PROJECT
NO.
3963