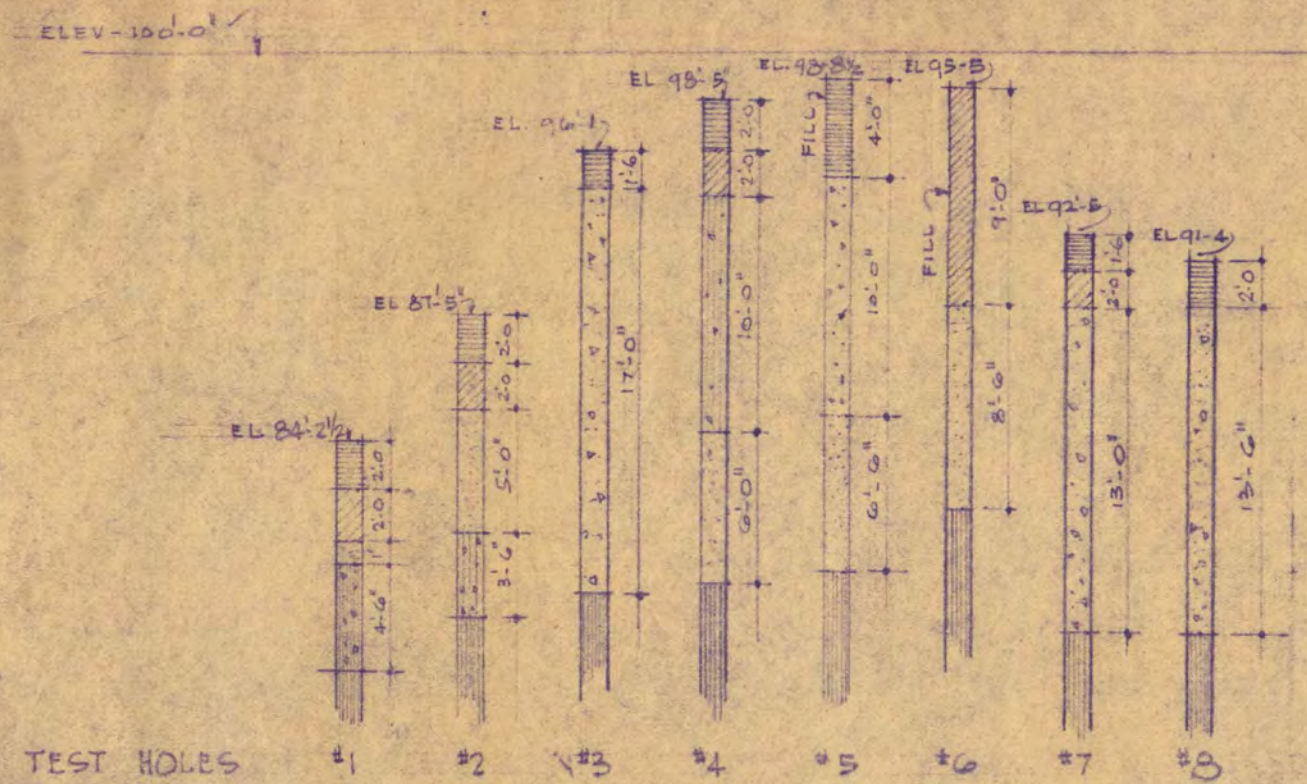
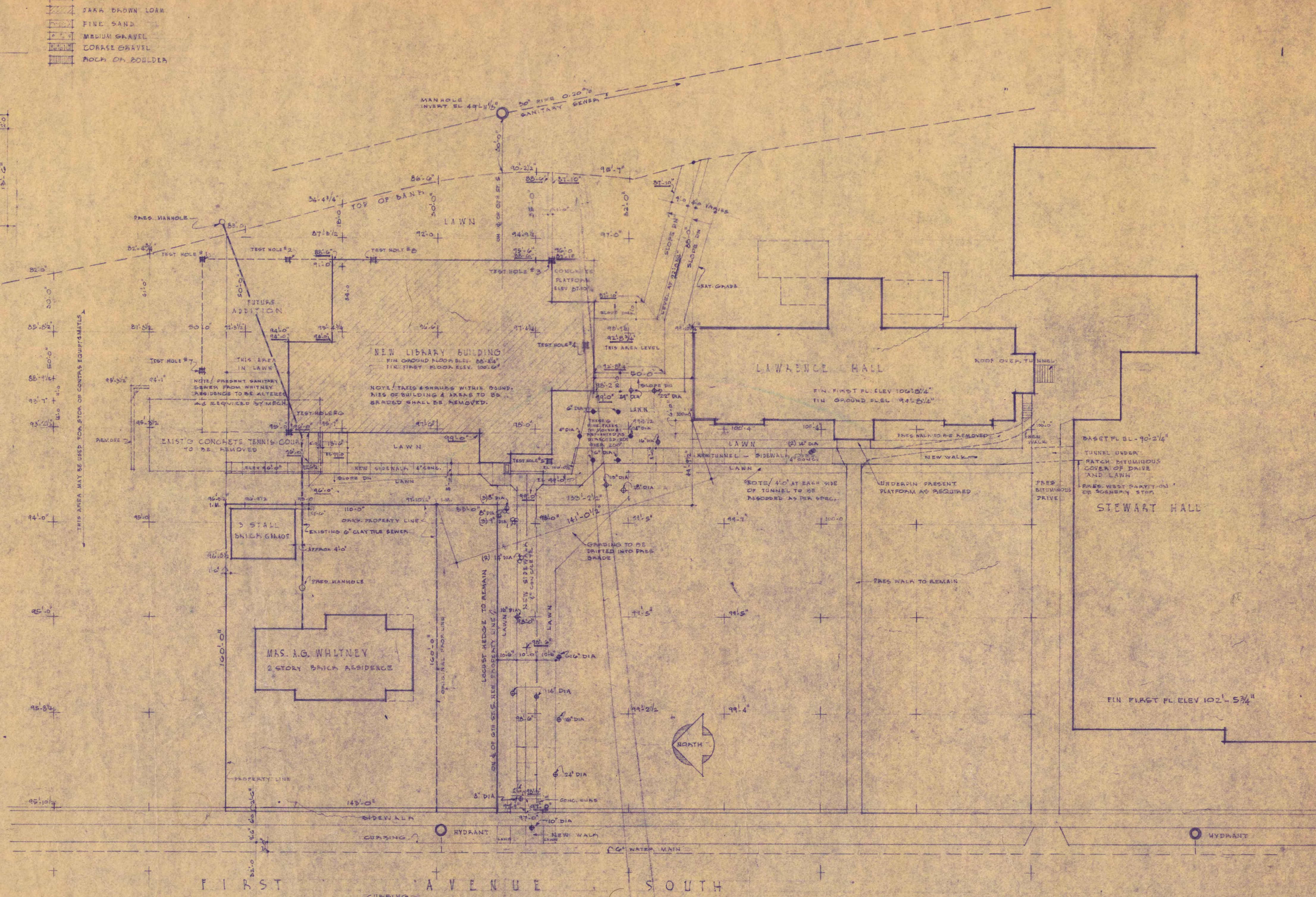


TEST HOLE DATA
SCALE 1/8" = 1'-0"



- LEGEND
- BLACK LOAM
 - PARK DOWN LOAM
 - FINE SAND
 - MEDIUM GRAVEL
 - COARSE GRAVEL
 - ROCK OR BOULDER



THIS AREA MAY BE USED FOR STORAGE OF CONTAINERS EQUIPMENT

SYMBOL FOR SIZE OF DIAMETER AS NOTED

BENCH MARKS - CITY DATUM
TOP OF FIRE HYDRANT - 1ST AVE & 6TH ST. SO. ELEV 99.41
TOP OF FIRE HYDRANT - 1ST AVE & 7TH ST. SO. ELEV 101.62
NOTE UNDERSCORED ELEVATIONS DENOTE FINISH GRADE ELEVATIONS - ALL OTHERS DENOTE NATURAL PRESENT GRADE ELEVATIONS

PLOT PLAN
SCALE 1" = 30'-0"

INDEX

ACCESS PANEL (FLOOR SECTION)	6
ACCESS PANEL (CEILING)	7
BULLETIN BOARD DETAILS	12
CABINET DETAILS	14
CABINET DETAILS RM# 103	14
CABINET DETAILS RM# 205	11
CHECK WD DETAILS	11
COUNTER DETAILS RM# 111	14
CROSS SECTION	7
CANOPY DETAIL MAIN ENTR.	11
DISPLAY CASE DETAILS	14
DOOR FRAME DETAILS	12
DOOR SCHEDULE	18
DOOR TYPES	15
ELEVATIONS	5-6
ENTRANCE DETAILS	8
EXPANSION JOINT DETAIL	9
ELEVATOR SHAFT	7
FLOOR PLANS	
FIRST FLOOR	5
GROUND FLOOR	2
SECOND FLOOR	4
FLOOR TYPES	15
LOBBY ELEVATIONS	14
LONGITUDINAL SECTION	7
NIGHT RETURN WD DETAIL	11
OVER HANG DETAIL	5
PIPE TUNNEL DETAIL	2
PLOT PLAN	
IDENT AVE DET.	5
RADIATOR CABINET DETAIL	5
ROOF PLAN	7
ROOM FINISH SCHEDULE	15
SCUTTLE DOOR DETAIL	15
SERVICE DOOR DETAIL	10
STAIR DETAILS	15
SUN SHADE DETAILS	6
TILE WAINSCOT CURVE	14
TUNNEL DETAILS	9
VESTIBULE DETAILS	12
WALL SECTIONS	5
WINDOW DETAILS	10

- LEGEND
- BRICK
 - CONCRETE
 - STONE
 - TILE
 - METAL
 - WOOD
 - MARBLE
 - EARTH

LIBRARY HALL
LIBRARY BUILDING
STATE TEACHERS COLLEGE
ST. CLOUD, MINNESOTA
DEPT. OF ADMINISTRATION - STATE OF MINNESOTA
ST. PAUL, MINNESOTA

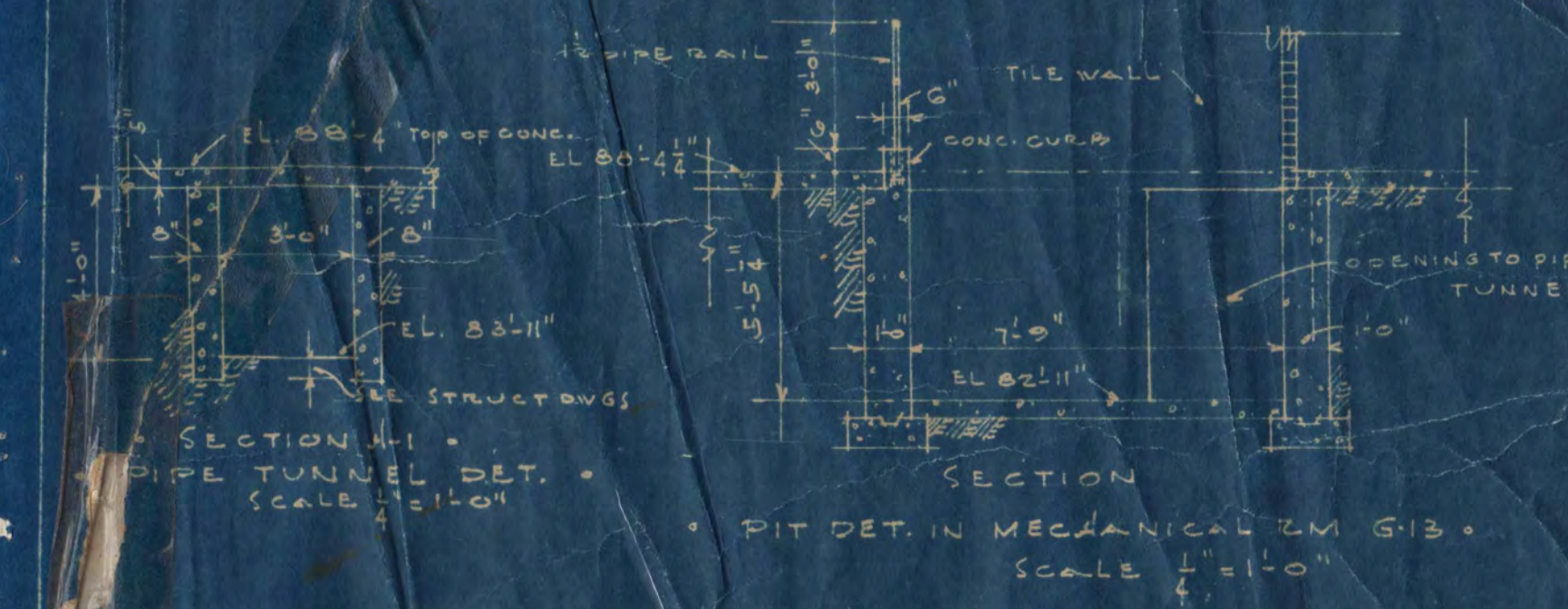
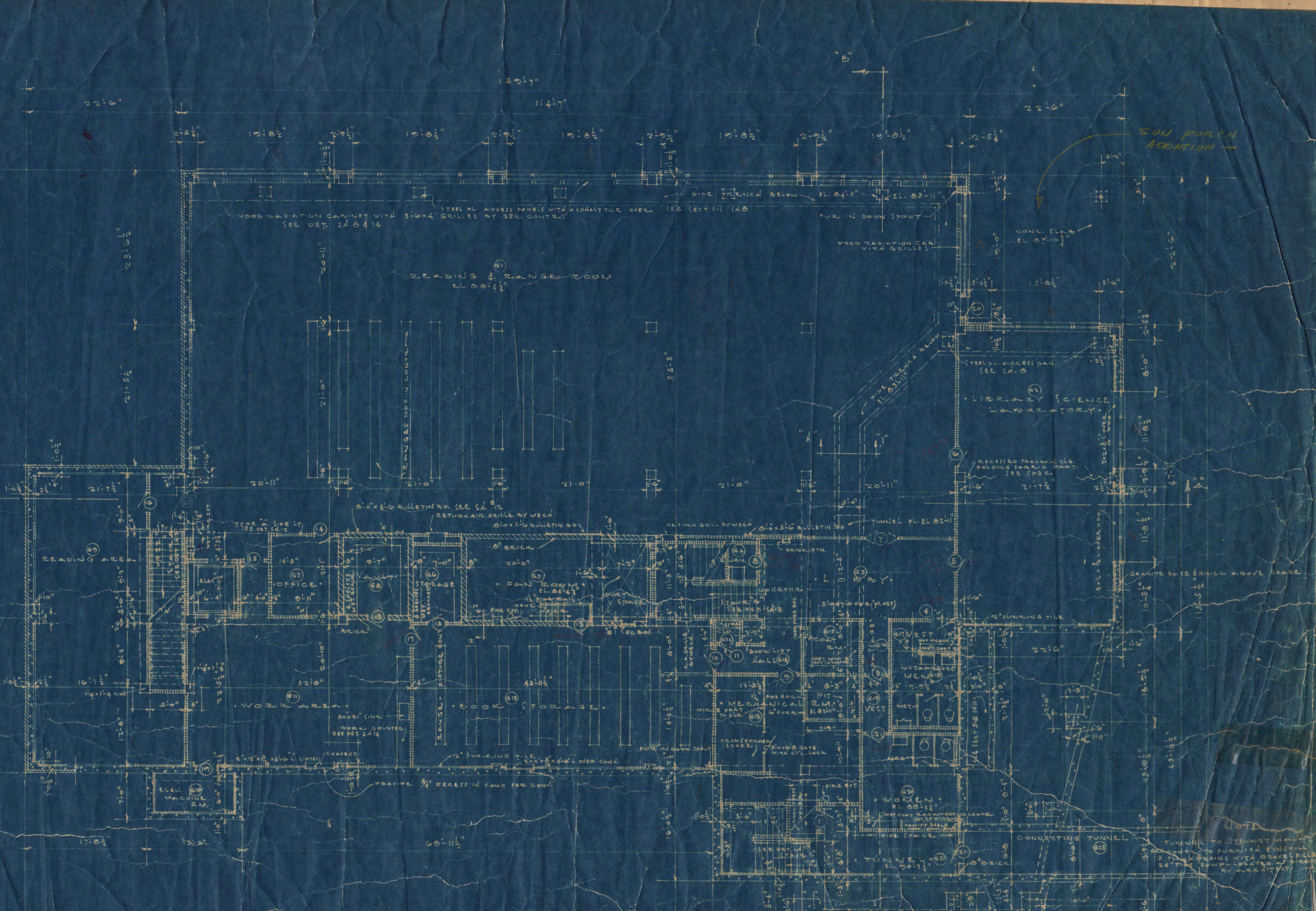
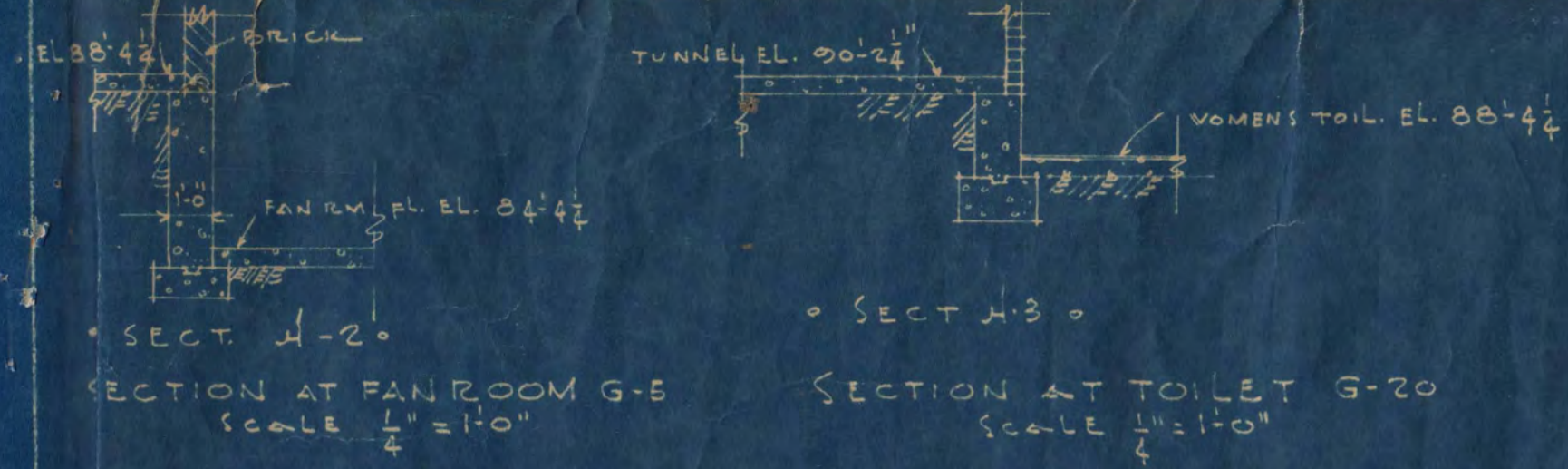
LOUIS C. PINAULT, ARCHITECT
ST. CLOUD, MINNESOTA
GADSMAN & MOORE, ENGINEERS
MINNEAPOLIS, MINNESOTA

DATE JAN. 51
COMM. NO. 4920
DRAWN BY P.L.T.
APPROVED BY *[Signature]*
APPROVED BY *[Signature]*
APPROVED BY *[Signature]*

DATE 1-20-51 Reg. No. 626

1918

036-040-1951-51



NOTE: GEN. CONTR. TO OBTAIN PIPE CASE LOCATIONS FROM MECHANICAL CONTRL.
ALL INTERIOR OPENINGS TO HAVE REINFORCED TILE L. WALL UNLESS OTHERWISE DET. OR NOTED.

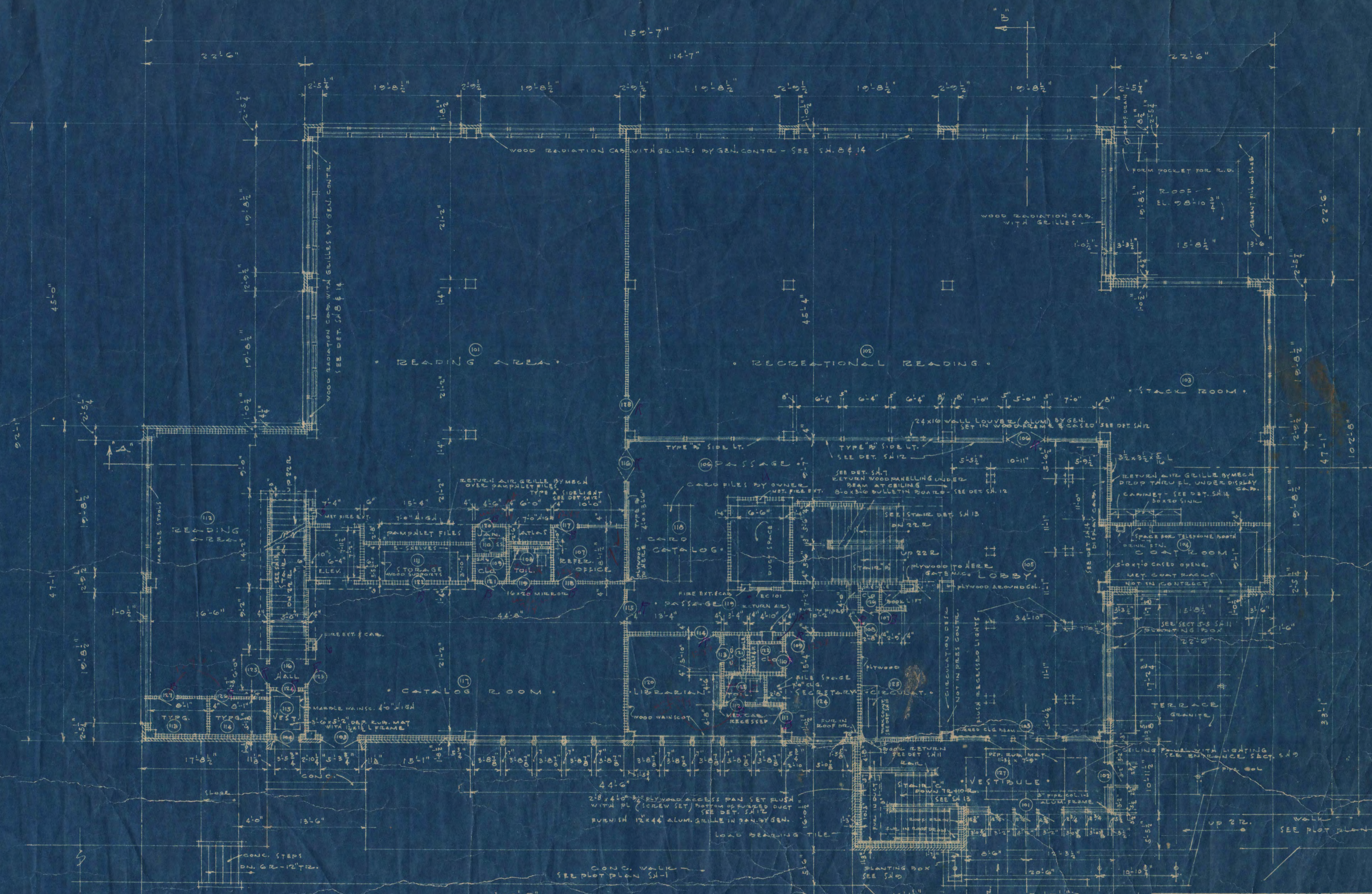
LIBRARY BUILDING
STATE TEACHERS COLLEGE
ST. CLOUD, MINNESOTA
DEPT. OF ADMINISTRATION - STATE OF MINNESOTA
ST. PAUL, MINNESOTA

LOUIS C. PINAULT, ARCHITECT
MINNESOTA
GAUSMAN & MOORE, ENGINEERS
ST. PAUL, MINNESOTA

DATE: JAN 5 1920
COMM. NO. 1920
APPROVED BY: [Signature]
APPROVED BY: [Signature]
DRAWN BY: [Signature]
DATE: 1-5-20

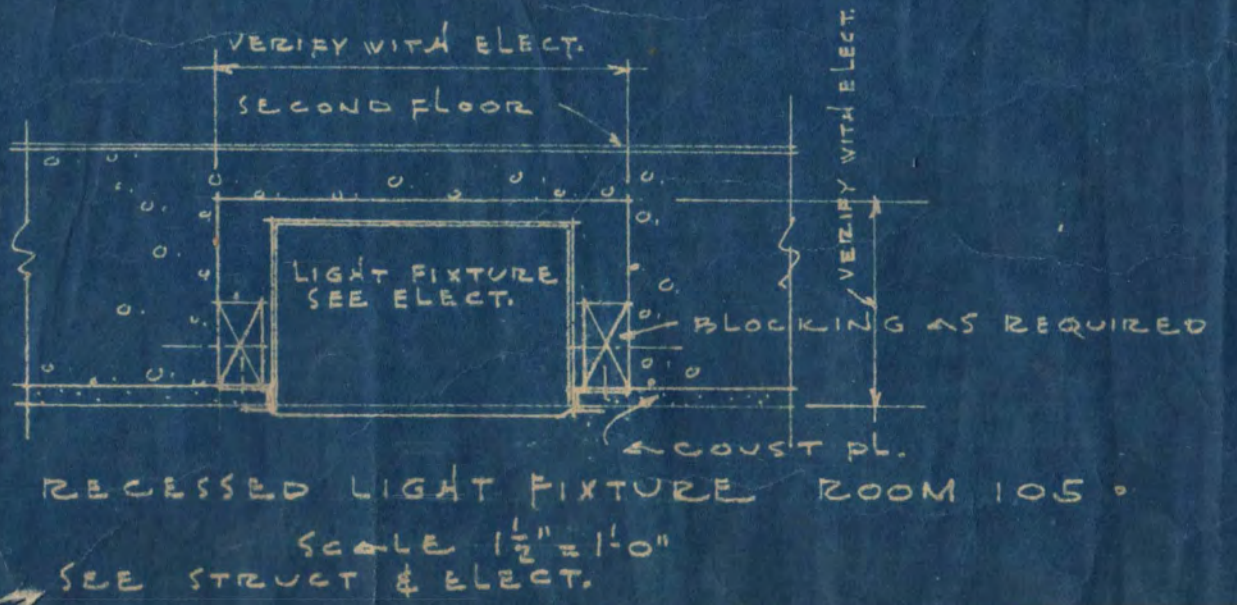
SHEET NO. 2

I hereby certify that this plan, specification or report was prepared by me or under my direct supervision and that I am a duly Registered Architect under the laws of the State of Minnesota.



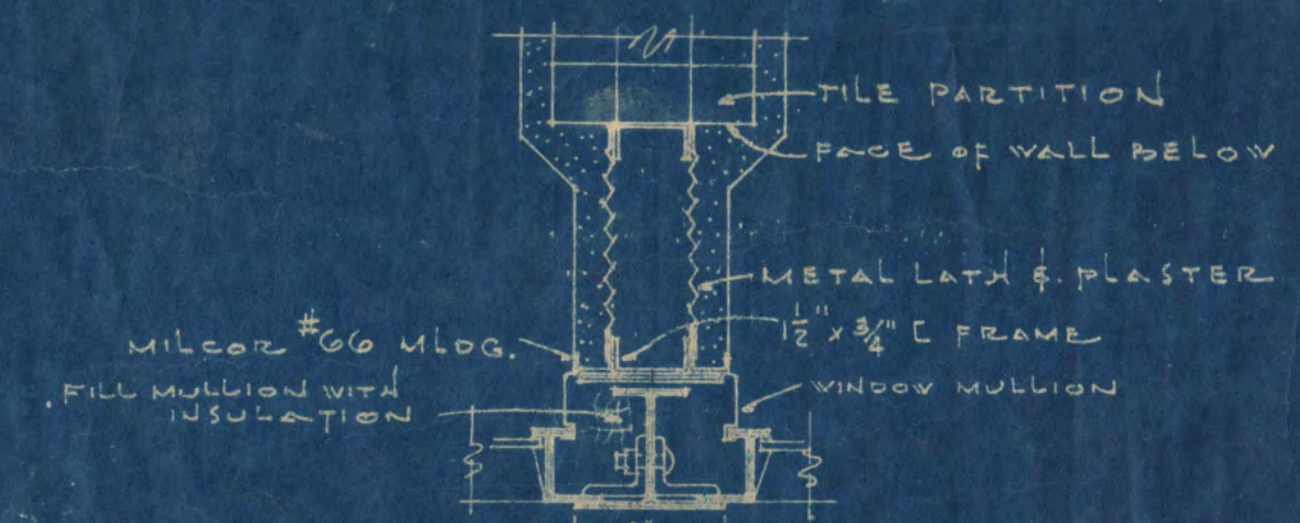
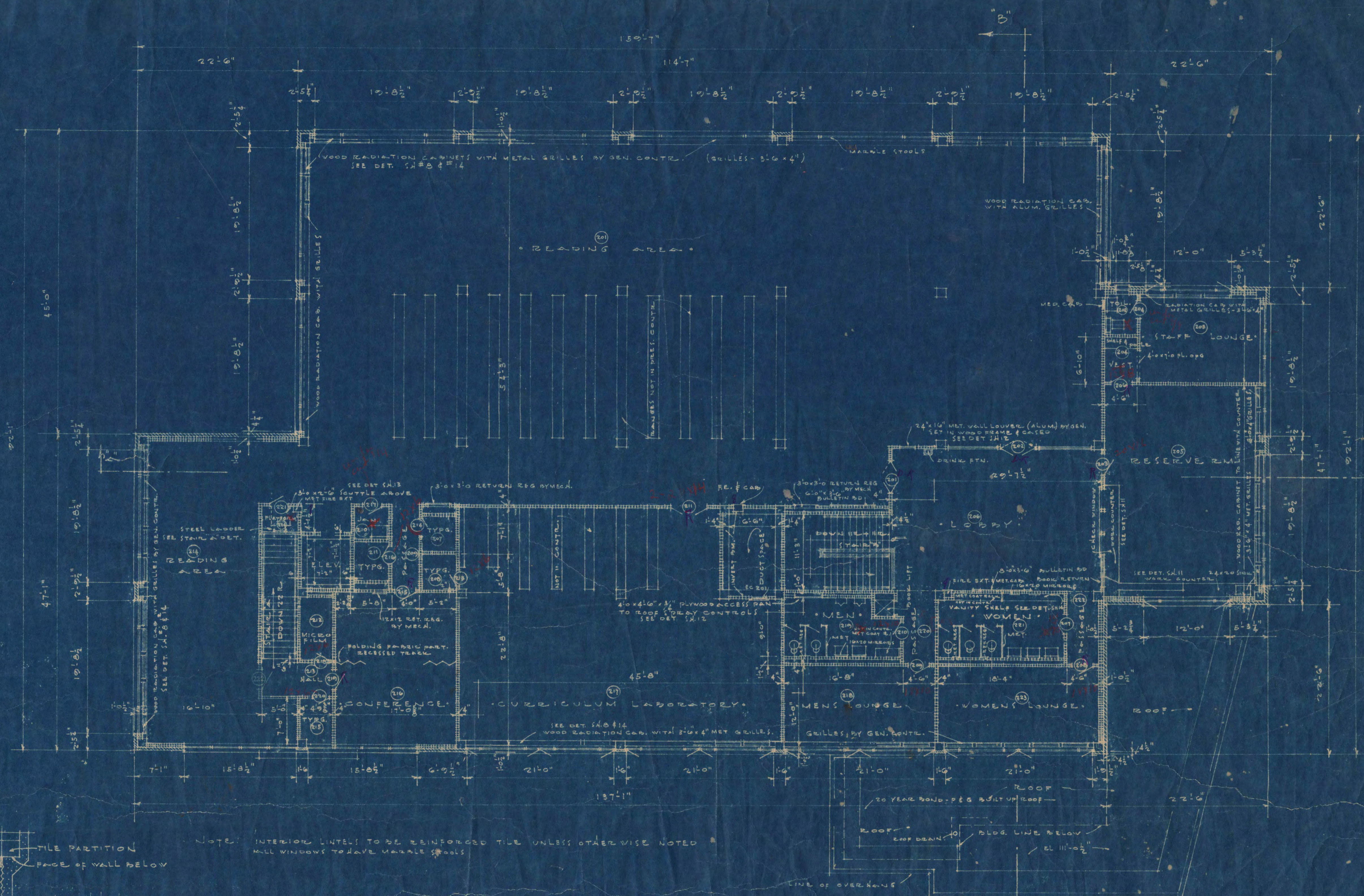
• FIRST FLOOR PLAN •
SCALE 1/8" = 1'-0"

NOTE:
ALL INTERIOR OPENINGS UP TO 5'-0" WIDE TO HAVE REINFORCED TILE LINTELS UNLESS OTHERWISE NOTED OR DETAILED. THIS APPLIES TO ALL FLOORS.
ALL WINDOWS TO HAVE MARBLE STOOLS



I hereby certify that this plan, specification, or report was prepared by me or under my direct supervision and that I am a duly Registered Architect under the laws of the State of Minnesota.

LIBRARY BUILDING STATE TEACHERS COLLEGE ST. CLOUD, MINNESOTA DEPT. OF ADMINISTRATION - STATE OF MINNESOTA ST. PAUL, MINNESOTA	
DATE JAN. 31	LOUIS C. PINAULT, ARCHITECT ST. CLOUD, MINNESOTA
COMM. NO. 4920	GAUSMAN & MOORE, ENGINEERS ST. PAUL, MINNESOTA
DRAWN BY V.E.S.	APPROVED BY <i>[Signature]</i> R. J. Gausman REGISTERED ARCHITECT MINNESOTA
	APPROVED BY <i>[Signature]</i> LOUIS C. PINAULT REGISTERED ARCHITECT MINNESOTA
	DATE 1-20-31 REV. NO. 026

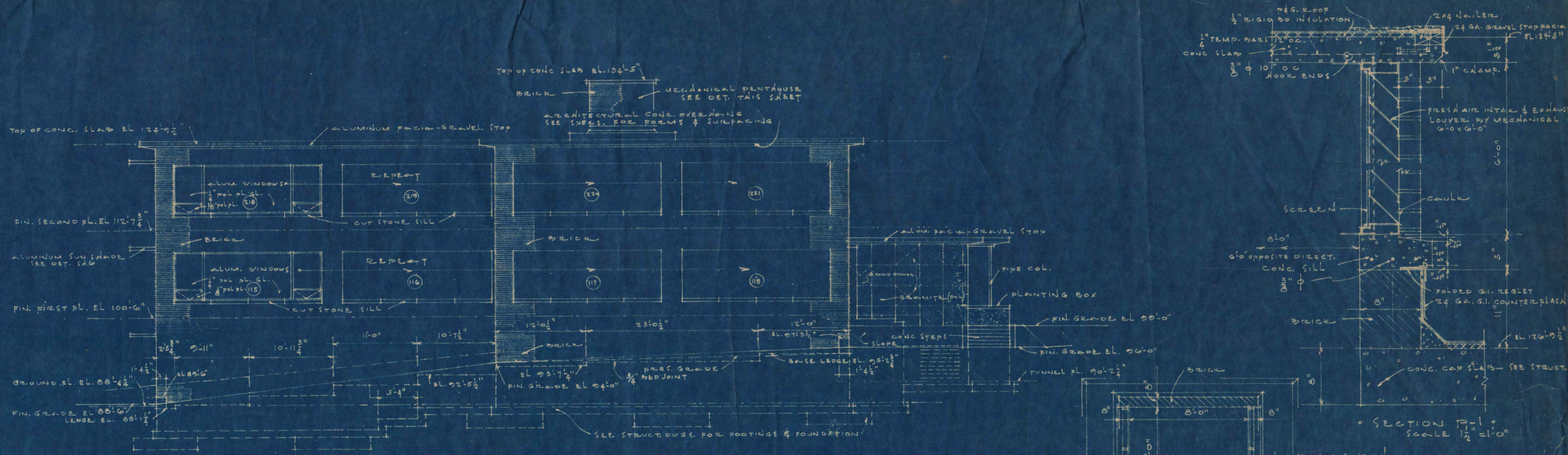


• WINDOW MULLION WITH INTERSECTING PARTITION •
 ROOMS 104-205-210-112
 SCALE 3/8"=1'-0"

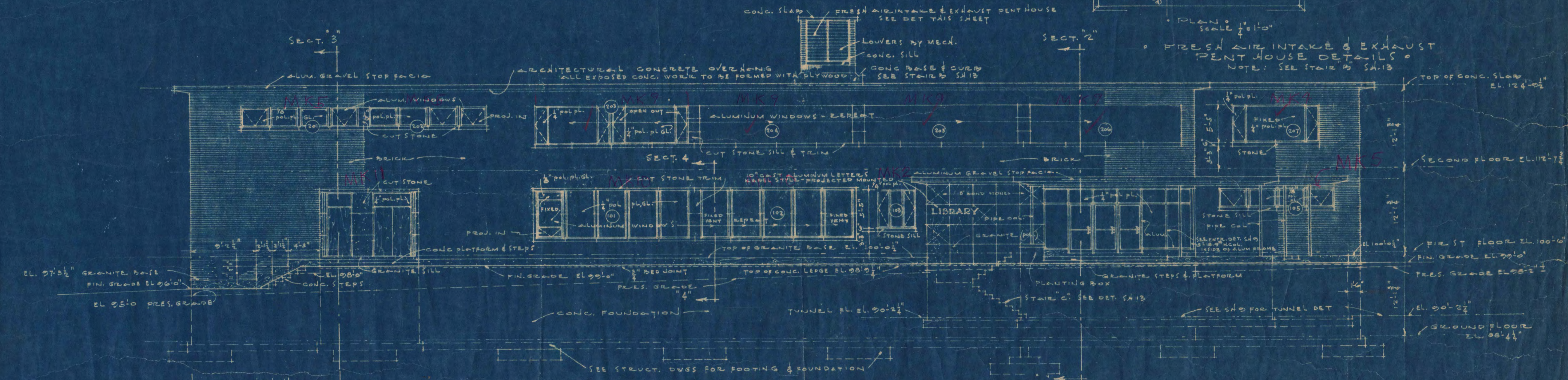
• SECOND FLOOR PLAN •
 SCALE 1/8"=1'-0"

I hereby certify that this plan, specification, or report was prepared by me or under my direct supervision and that I am a duly Registered Architect under the laws of the State of Minnesota.
Louis C. Pinault
 Date 1-20-31 Reg. No. 626

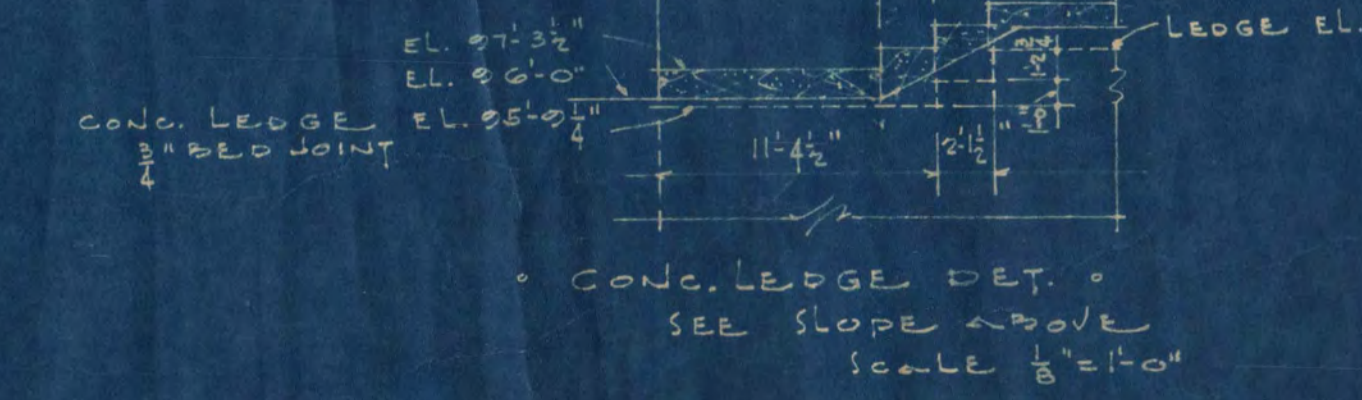
LIBRARY BUILDING STATE TEACHERS COLLEGE ST. CLOUD, MINNESOTA DEPT. OF ADMINISTRATION STATE OF MINNESOTA ST. PAUL, MINNESOTA		SHEET NO. 4 OF 15 PROJECT NO. 1318
DATE JAN. 31	LOUIS C. PINAULT, ARCHITECT ST. CLOUD, MINNESOTA GAUSMAN & MOORE, ENGINEERS ST. PAUL, MINNESOTA	
COMM. NO. 4920	APPROVED BY <i>Jos. Neudley</i> PRES. OF STATE TEACHERS COLLEGE BOARD	APPROVED BY <i>Arthur H. Clever</i> REGISTERED ARCHITECT
DRAWN BY V.E.S.	APPROVED BY <i>R. G. G. G.</i> REGISTERED ARCHITECT	APPROVED BY <i>R. G. G. G.</i> REGISTERED ARCHITECT



NORTH ELEVATION
SCALE 1/8" = 1'-0"



WEST ELEVATION
SCALE 1/8" = 1'-0"



LIBRARY BUILDING STATE-TEACHERS COLLEGE ST. CLOUD, MINNESOTA DEPT. OF ADMINISTRATION - STATE OF MINNESOTA ST. PAUL, MINNESOTA		
DATE	JAN. 31	LOUIS C. PINAULT, ARCHITECT ST. PAUL, MINNESOTA
COMM. NO.	4920	
APPROVED BY	<i>John Headley</i> PRES. OF STATE TEACHERS COLLEGE BOARD	SHEET OF 15 PROJECT NO. 1318
APPROVED BY	<i>Robert W. Currier</i> COMMISSIONER OF ADMINISTRATION	
DRAWN BY	V. E. S.	
Date 1-20-31 Ref. No. 426		

I hereby certify that this plan, specification, or report was prepared by me or under my direct supervision and that I am a duly Registered Architect under the laws of the State of Minnesota.

Louis C. Pinault