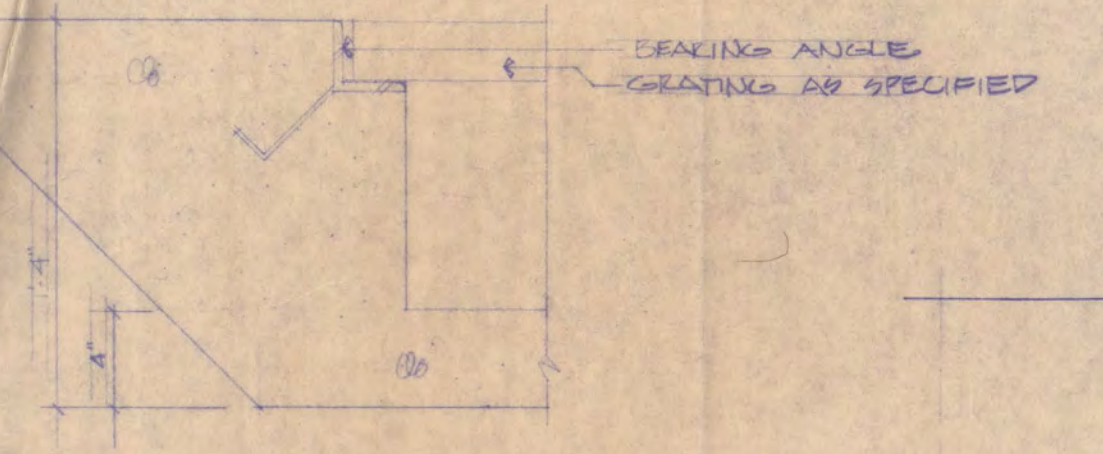
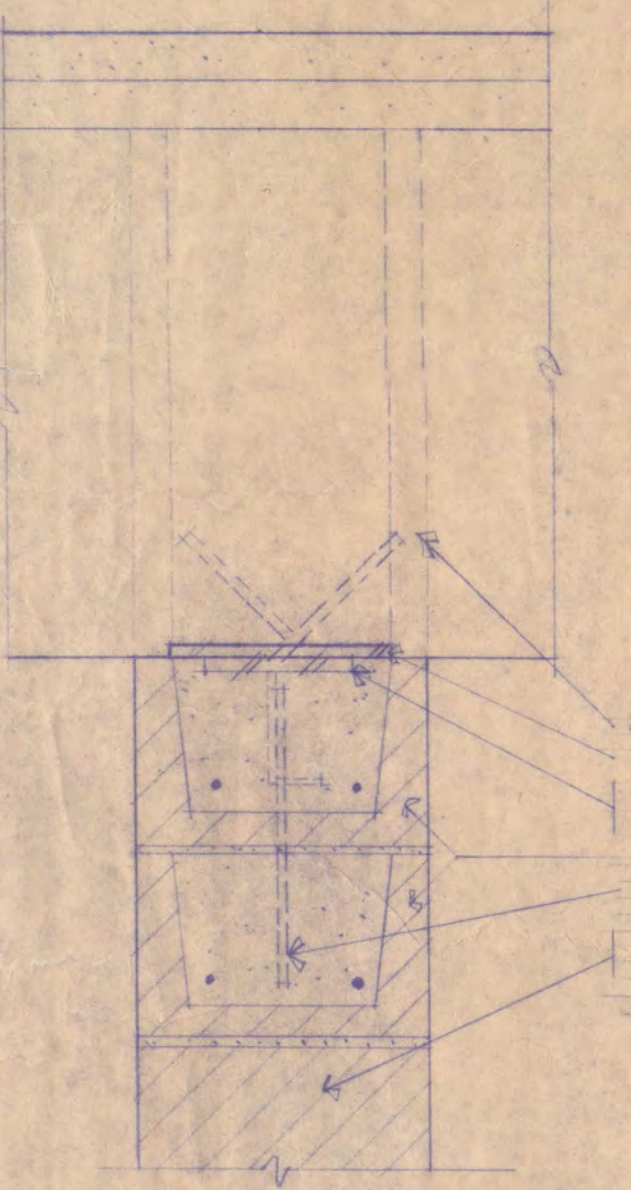


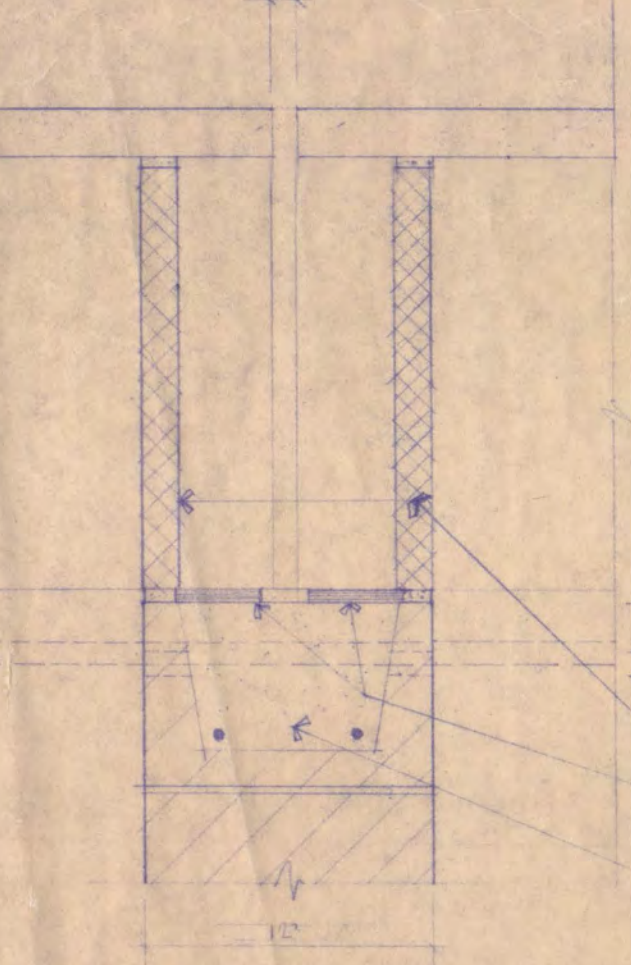
PLAN-MECHANICAL SUPPORTS
1/8" = 1'-0"



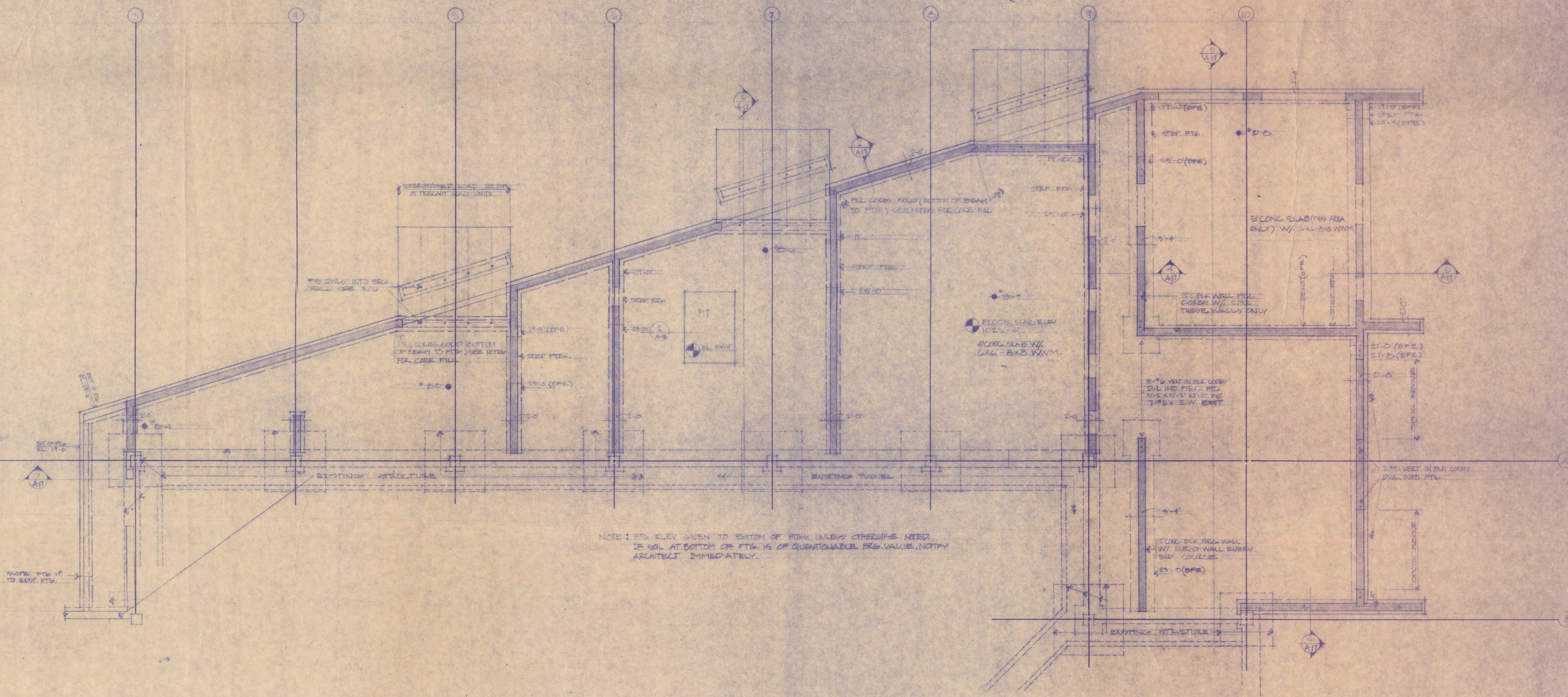
CRATING DETAIL
1/8" = 1'-0"



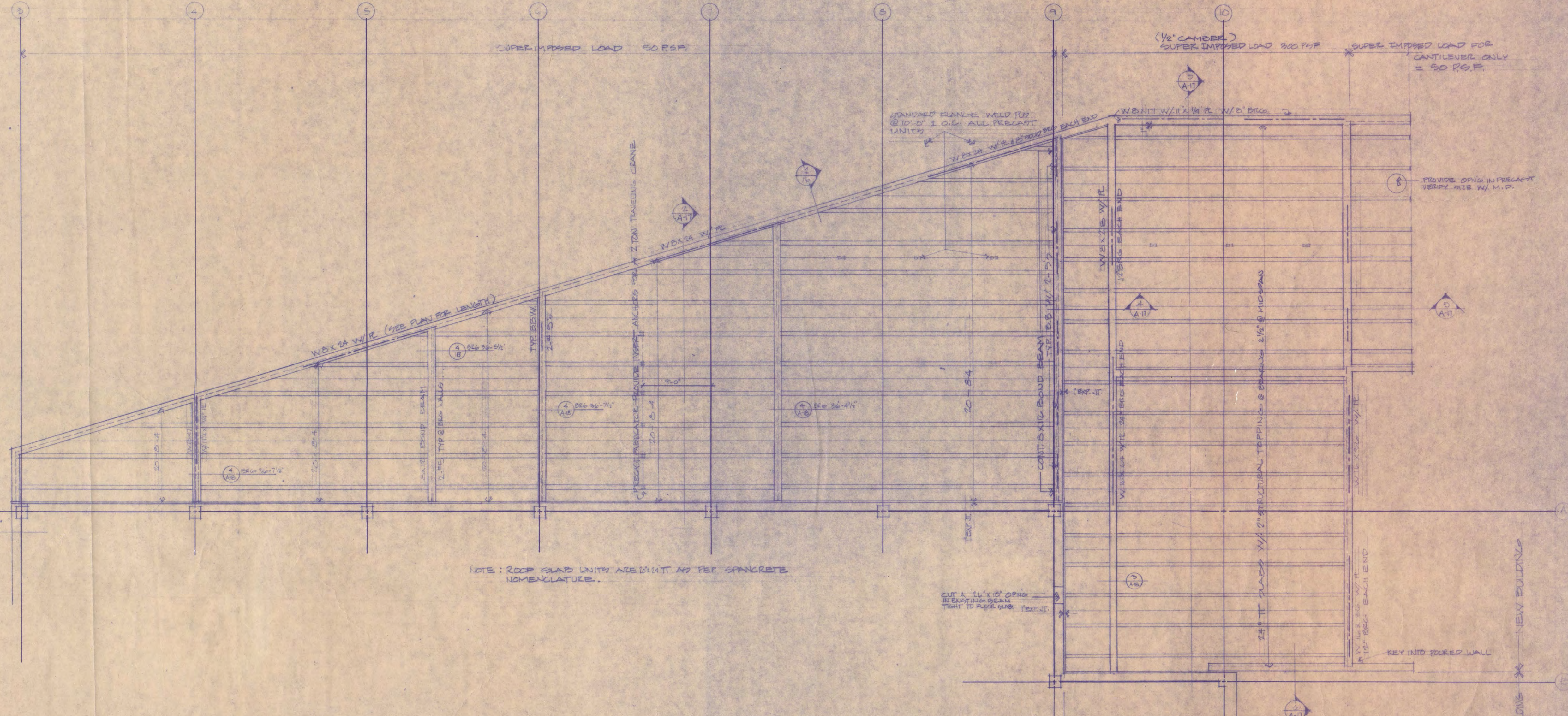
BEARING WALL DETAIL
1/8" = 1'-0"



TYPICAL CONC. BLK. BRG. WALL
1/8" = 1'-0"



FOOTING AND FOUNDATION PLAN
SCALE: 1/8" = 1'-0"



ROOF FRAMING PLAN
SCALE: 1/8" = 1'-0"

NOTE: ELEV. GIVEN TO BOTTOM OF FOOT UNLESS OTHERWISE NOTED
IF SOL. AT BOTTOM OR FTS. IS OF QUESTIONABLE BRG. VALUE, NOTIFY
ARCHITECT IMMEDIATELY.

NOTE: ROOF SLAB UNITS ARE IN INCHES PER CONCRETE
NOMENCLATURE.

I HEREBY CERTIFY THAT THIS PLAN SPECIFICATION
OR REPORT WAS PREPARED BY ME OR UNDER MY
DIRECT SUPERVISION AND THAT I AM A DULY REG.
REGISTERED ARCHITECT/ENGINEER UNDER THE LAWS
OF THE STATE OF MINNESOTA.

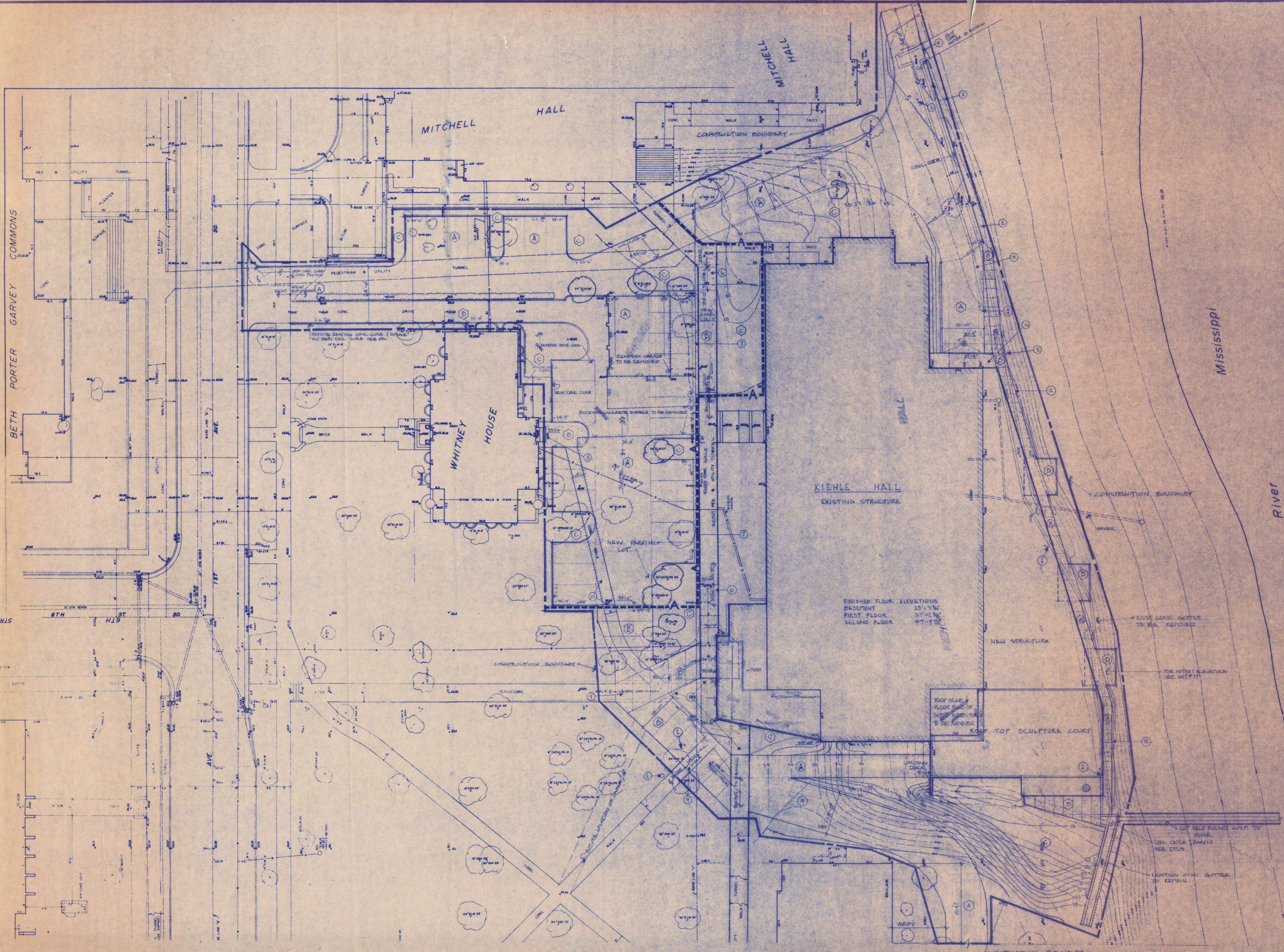
DATE: _____ REG. NO. _____



KIEHLE HA
REMODELI
FOR
VISUAL A
DEPARTM

ST. CLOUD STATE
ST. CLOUD,

REVISIONS



SITE PLAN
SCALE: 1/8" = 1'-0"

GENERAL NOTES

MATERIALS & SYMBOLS

- EXISTING TO BE REMOVED
- ALTERNATE CONSTRUCTION BOUNDARY
- EXISTING CURB
- NEW FIN. GRADE
- EXISTING CONTOURS
- NEW CONTOURS
- CONSTRUCTION BOUNDARY
- EXISTING TREES TO REMAIN
- EXISTING TREE TO BE REMOVED
- BITUMINOUS
- BRICK FINISH CONC. WALK
- AREA TO BE SODDED
- PRECAST CONC. SEE SHEET 17

I HEREBY CERTIFY THAT THIS PLAN SPECIFICATION OR REPORT WAS PREPARED BY ME OR UNDER MY DIRECT SUPERVISION AND THAT I AM A DULY REGISTERED ARCHITECT/ENGINEER UNDER THE LAWS OF THE STATE OF MINNESOTA.

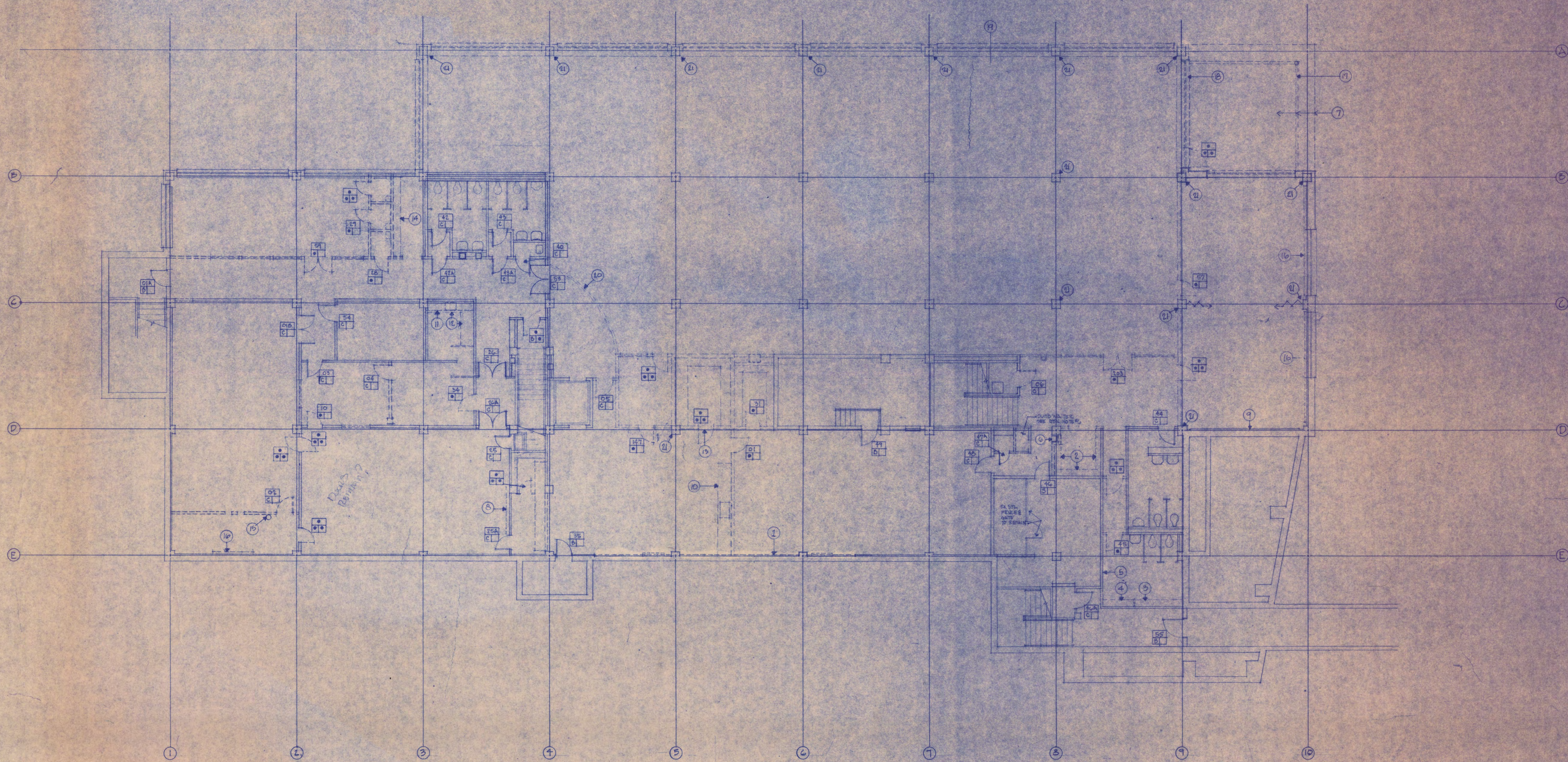
DATE: _____ REG. NO.: _____

WEHLINGER-REMELY AND ASSOCIATES INC.
ARCHITECTS AND ENGINEERS
BOX 218 1601 WEST SAINT GERMAIN
SAINT CLOUD, MINNESOTA 56301
TELEPHONE 818-883-8700

KIEHLE HALL REMODELING
FOR
VISUAL ARTS DEPARTMENT
ST. CLOUD STATE COLLEGE
ST. CLOUD, MINNESOTA

REVISIONS	PROJECT NO. 7127
ISSUE DATE	
DRAWN BY	
CHECKED	
APPROVED ARCHITECT	
APPROVED OWNER	
SCALE	

A-1
PROJ. TOTAL SHEETS



BASEMENT DEMOLITION PLAN
 SCALE: 1/8" = 1'-0"

GENERAL NOTES

I HEREBY CERTIFY THAT THIS PLAN SPECIFICATION OR REPORT WAS PREPARED BY ME OR UNDER MY DIRECT SUPERVISION AND THAT I AM A QUALIFIED REGISTERED ARCHITECT/ENGINEER UNDER THE LAWS OF THE STATE OF MINNESOTA.

DATE: _____ REG. NO. _____

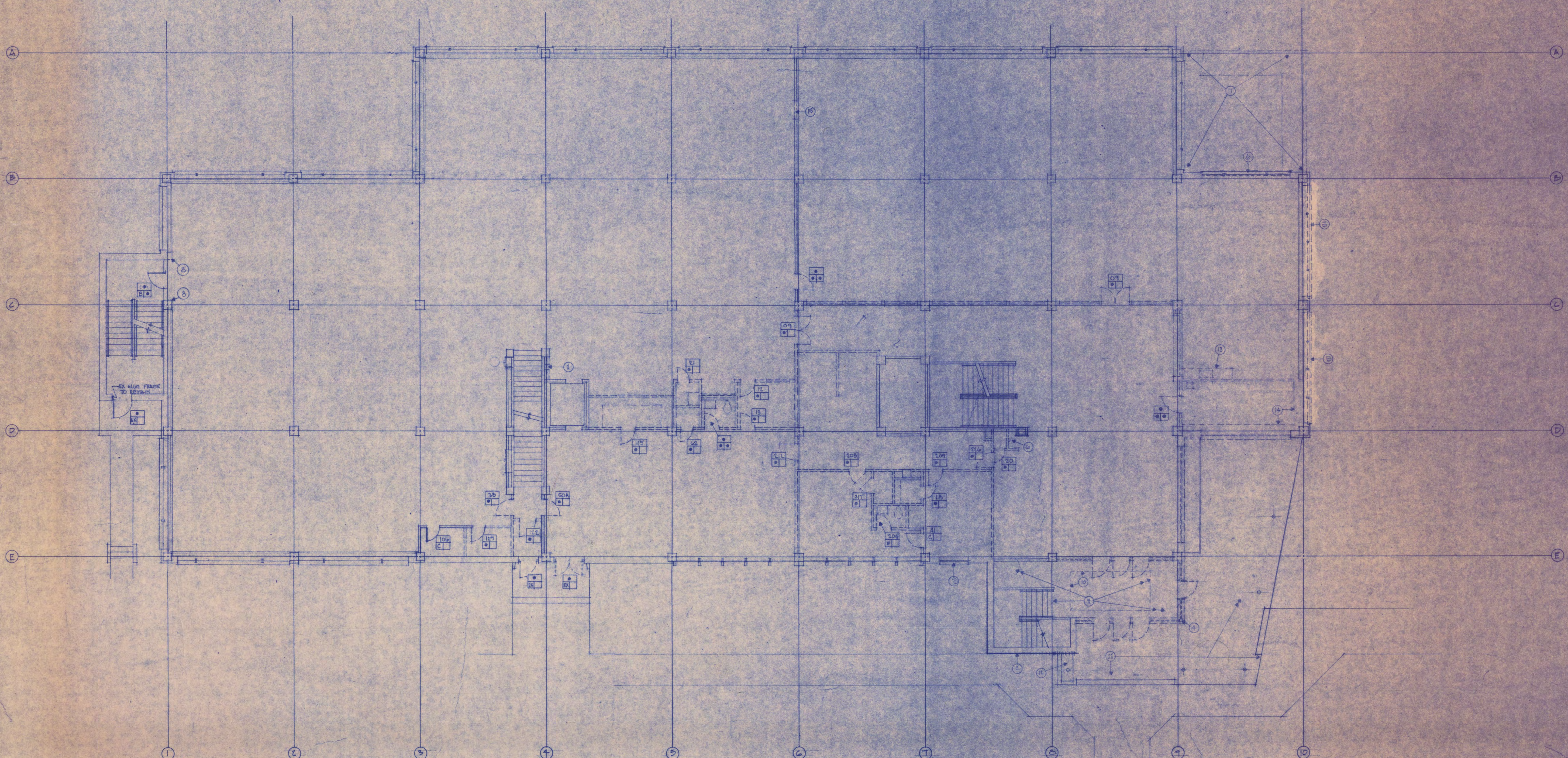
WEHLINGER-REMELY AND ASSOCIATES INC.
 ARCHITECTS AND ENGINEERS
 BOX 616 501 WEST SAINT GERMAIN
 SAINT CLOUD, MINNESOTA 56301
 TELEPHONE: 612-853-8100

**KIEHLE HALL
 REMODELING
 FOR
 VISUAL ARTS
 DEPARTMENT**

ST. CLOUD STATE COLLEGE
 ST. CLOUD, MINNESOTA

REVISIONS	PROJECT NO. 7137
	ISSUE DATE
	DRAWN BY
	CHECKED
	APPROVED ARCHITECT
	APPROVED OWNER
	SCALE

A-2
 PROJ. TOTAL



FIRST FLOOR DEMOLITION PLAN
 SCALE: 1/8" = 1'-0"

GENERAL NOTES

I HEREBY CERTIFY THAT THIS PLAN SPECIFICATION OR REPORT WAS PREPARED BY ME OR UNDER MY DIRECT SUPERVISION AND THAT I AM A DULY REGISTERED ARCHITECT/ENGINEER UNDER THE LAWS OF THE STATE OF MINNESOTA.

DATE: _____ REG. NO. _____

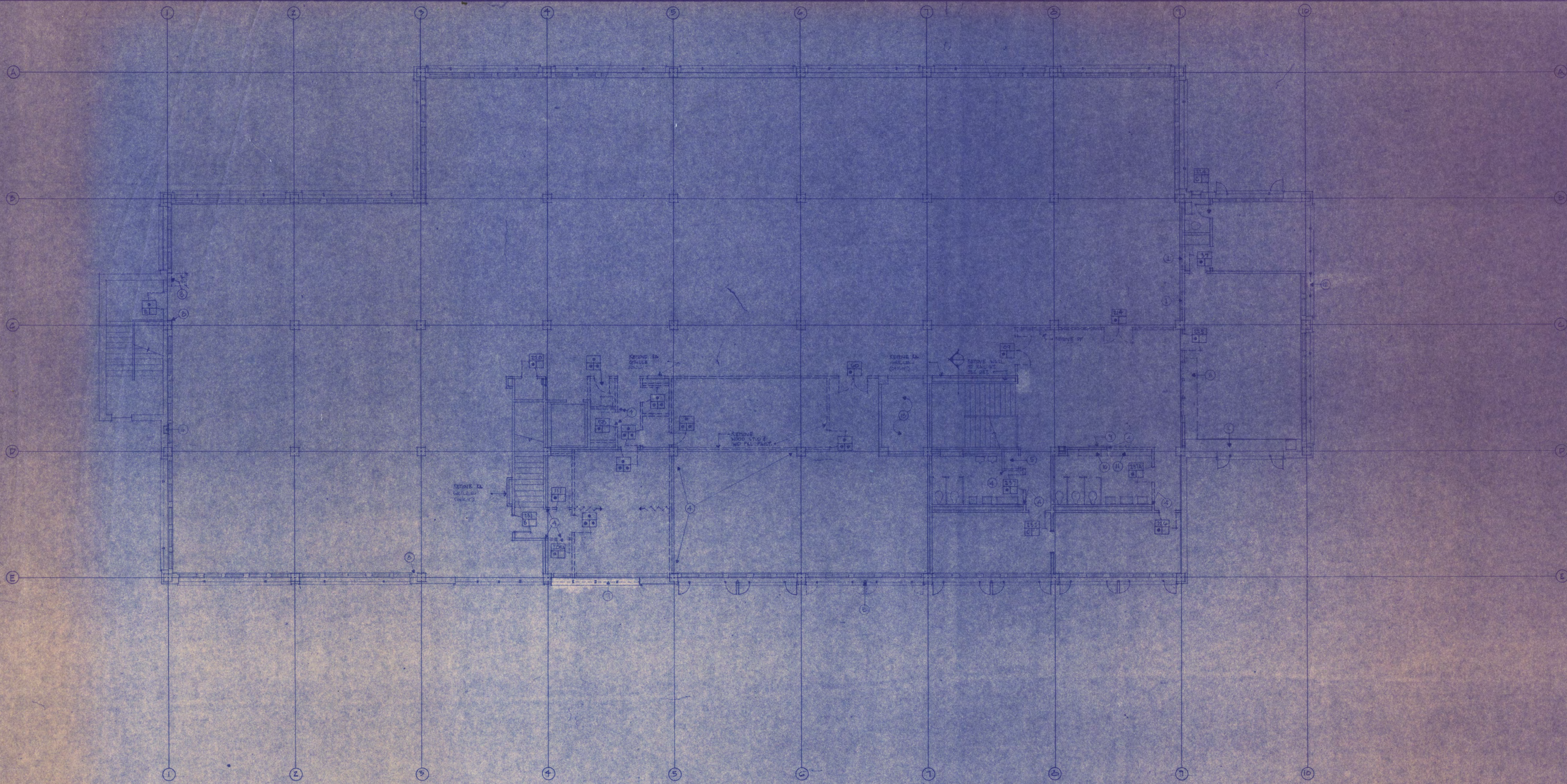
WEMLINGER - REMELY AND ASSOCIATES INC.
 ARCHITECTS AND ENGINEERS
 603 5TH AVE. 4TH FLOOR SAINT CLOUD
 SAINT CLOUD, MINNESOTA 56301
 TELEPHONE 812-853-8100

**KIEHLE HALL
 REMODELING
 FOR
 VISUAL ARTS
 DEPARTMENT**

ST. CLOUD STATE COLLEGE
 ST. CLOUD, MINNESOTA

REVISIONS	PROJECT NO. 7137
	ISSUE DATE
	DRAWN BY
	CHECKED
	APPROVED ARCHITECT
	APPROVED ARCHITECT
	APPROVED OWNER
	SCALE

A-3
 PROJ. TOTAL SHEETS =



SECOND FLOOR DEMOLITION PLAN
 SCALE: 1/8"=1'-0"

GENERAL NOTES

I HEREBY CERTIFY THAT THIS PLAN SPECIFICATION OR REPORT WAS PREPARED BY ME OR UNDER MY DIRECT SUPERVISION AND THAT I AM A DULY REGISTERED ARCHITECT/ENGINEER UNDER THE LAWS OF THE STATE OF MINNESOTA.

DATE _____ REG. NO. _____

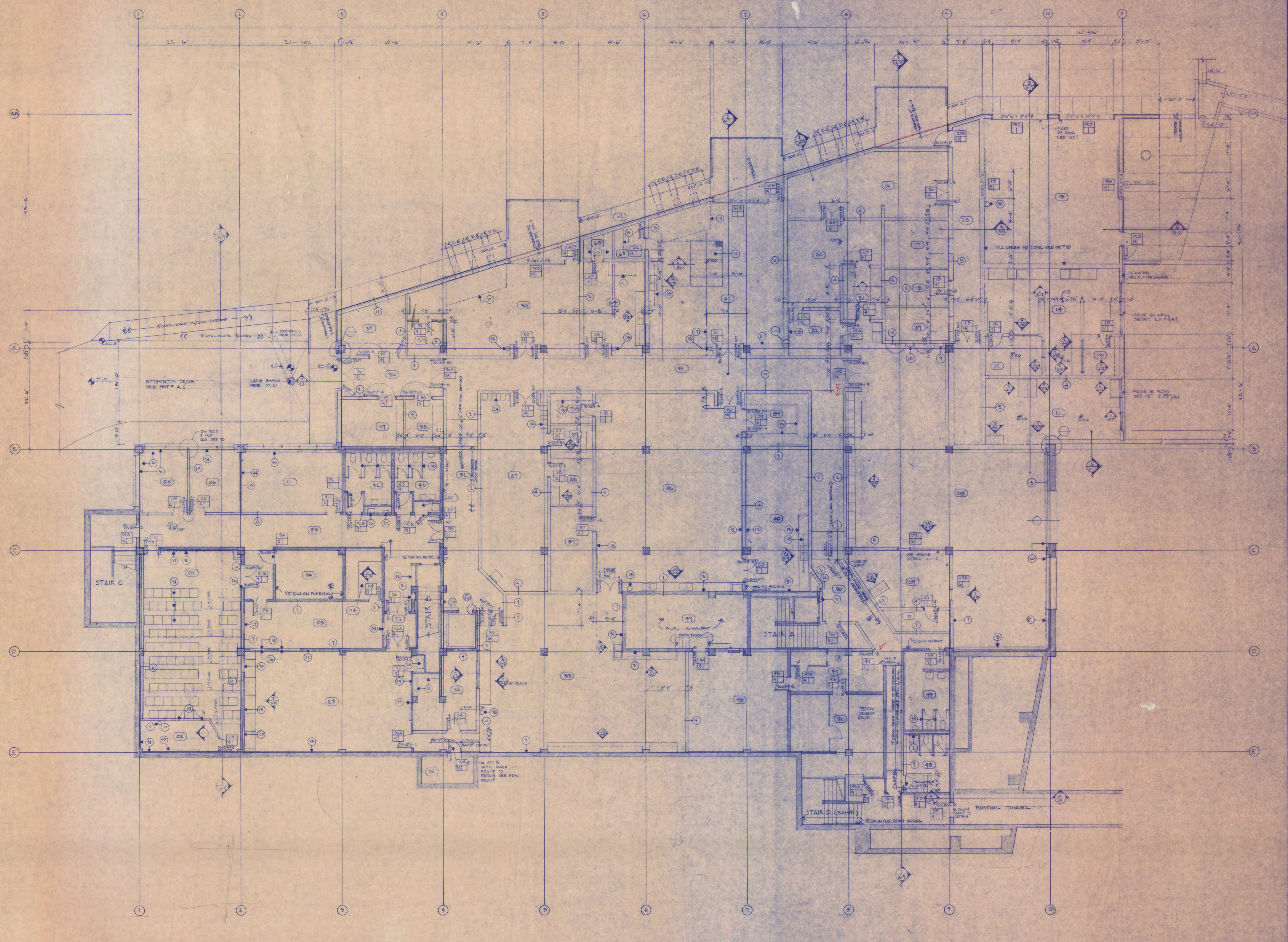
WEHLINGER-REMELY AND ASSOCIATES INC.
 ARCHITECTS AND ENGINEERS
 BOX 576 305 WEST SAINT GERMAIN
 SAINT CLOUD, MINNESOTA 56301
 TELEPHONE 512-853-2100

**KIEHLE HALL
 REMODELING
 FOR
 VISUAL ARTS
 DEPARTMENT**

**ST. CLOUD STATE COLLEGE
 ST. CLOUD, MINNESOTA**

REVISIONS	PROJECT NO. 7137
	ISSUE DATE
	DRAWN BY
	CHECKED
	APPROVED ARCHITECT
	APPROVED OWNER
	SCALE

 **A-4**
 PROJ. TOTAL SHEETS



BASEMENT FLOOR PLAN
 SCALE: 1/8" = 1'-0"

I HEREBY CERTIFY THAT THIS PLAN SPECIFICATION OR REPORT WAS PREPARED BY ME OR UNDER MY DIRECT SUPERVISION AND THAT I AM A DULY REGISTERED ARCHITECT/ENGINEER UNDER THE LAWS OF THE STATE OF MINNESOTA.

DATE: _____ REG. NO. _____



WEHLINGER-REMLEY AND ASSOCIATES INC.
 ARCHITECTS AND ENGINEERS
 BOX 616 301 WEST SAINT GERMAIN
 SAINT CLOUD, MINNESOTA 56301
 TELEPHONE 612-853-2100

**KIEHLE HALL
 REMODELING
 FOR
 VISUAL ARTS
 DEPARTMENT**

ST. CLOUD STATE COLLEGE
 ST. CLOUD, MINNESOTA

REVISIONS	PROJECT NO. 7137
	ISSUE DATE
	DRAWN BY
	CHECKED
	APPROVED ARCHITECT
	APPROVED OWNER
	SCALE