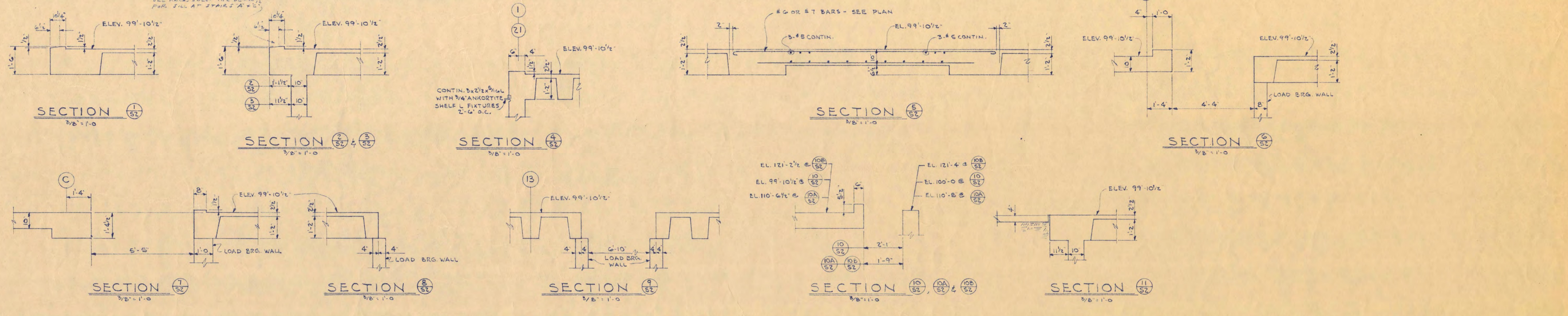
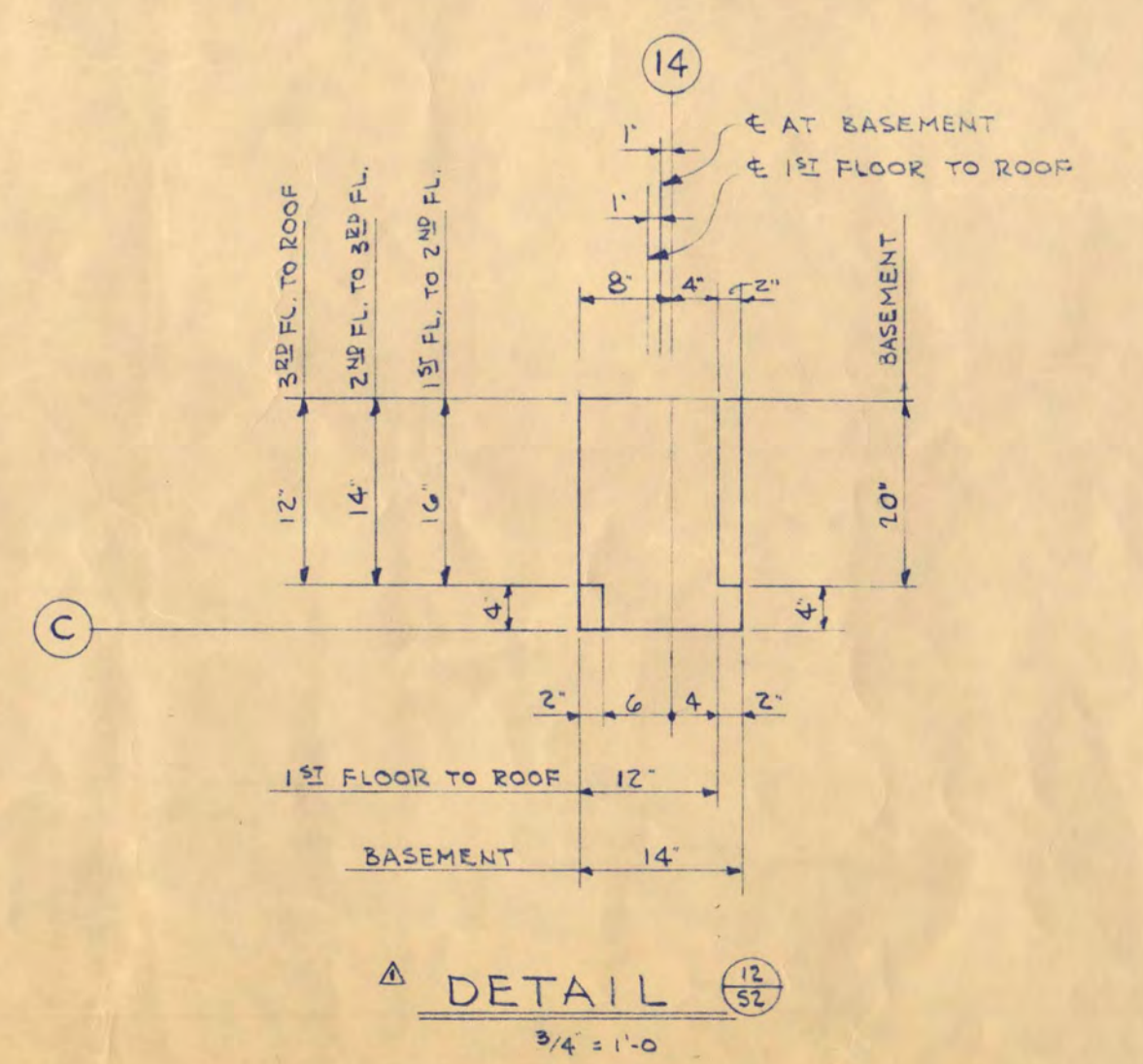


FIRST FLOOR FRAMING PLAN

MARK	B	D	STRAIGHT	BENT	NO. OF SPACERS EACH END	REMARKS
1B1	2B	16 1/2	5'-4"	7'-5"	2	W/ST. BENT AT COL. C11
1B2	2B	16 1/2	5'-4"	6'-5"	2	W/ST. BENT AT COL. C11
1B3	3B	16 1/2	5'-4"	7'-5"	2	W/ST. BENT AT COL. C11
1B4	3B	16 1/2	5'-4"	6'-5"	2	W/ST. BENT AT COL. C11
1B5	3B	16 1/2	5'-4"	7'-5"	2	W/ST. BENT AT COL. C11
1B6	12	14	4'-5"			W/ST. BENT AT COL. C11
1B7	2B	16 1/2	4'-5"	4'-5"	2	W/ST. BENT AT COL. C11
1B8	2B	16 1/2	4'-5"	4'-5"	2	W/ST. BENT AT COL. C11
1B9	2B	16 1/2	4'-5"	4'-5"	2	W/ST. BENT AT COL. C11
1B10	3B	16 1/2	5'-4"	6'-5"	2	W/ST. BENT AT COL. C11
1B11	3B	16 1/2	5'-4"	3'-5"	2	W/ST. BENT AT COL. C11
1B12	3B	16 1/2	5'-4"	7'-5"	2	W/ST. BENT AT COL. C11
1B13	1B	14	3'-6"	3'-6"		W/ST. BENT EXTN. END
1B14	14	16 1/2	3'-5"	3'-6"		
1B15	24	16 1/2	4'-5"	4'-5"	2	W/ST. BENT AT COL. C11
1B16	24	16 1/2	5'-4"	5'-5"	2	W/ST. BENT AT COL. C11



MARK	b x d	STRAIGHT	BENT	REMARKS
1J1	6x14 2 1/2	1'-5"	1'-5"	W/ST. BENT AT EXTERIOR WALL
1J2	10x14 2 1/2	2'-0"	2'-5"	W/ST. BENT AT EXTERIOR WALL
1J3	9x14 2 1/2	1'-6"	1'-6"	W/ST. BENT AT EXTERIOR WALL
1J4	10x14 2 1/2	2'-5"	2'-5"	W/ST. BENT AT EXTERIOR WALL
1J5	10x14 2 1/2	2'-6"	2'-6"	W/ST. BENT AT EXTERIOR WALL
1J6	10x14 2 1/2	2'-6"	2'-6"	W/ST. BENT AT EXTERIOR WALL
1J7	10x14 2 1/2	2'-5"	2'-5"	W/ST. BENT AT EXTERIOR WALL
1J8	10x14 2 1/2	2'-6"	2'-6"	W/ST. BENT AT EXTERIOR WALL
1J9	11x14 2 1/2	2'-5"	2'-5"	W/ST. BENT AT EXTERIOR WALL
1J10	6x14 2 1/2	1'-7"	1'-7"	W/ST. BENT AT EXTERIOR WALL
1J11	10x14 2 1/2	2'-6"	2'-7"	W/ST. BENT AT EXTERIOR WALL
1J12	10x14 2 1/2	2'-7"	2'-8"	W/ST. BENT AT EXTERIOR WALL
1J13	10x14 2 1/2	2'-6"	2'-7"	W/ST. BENT AT EXTERIOR WALL
1J14	10x14 2 1/2	2'-5"	2'-5"	W/ST. BENT AT EXTERIOR WALL
1J15	15x14 2 1/2	3'-6"	3'-7"	W/ST. BENT AT EXTERIOR WALL
1J16	10x14 2 1/2	2'-5"	2'-5"	W/ST. BENT AT EXTERIOR WALL
1J17	10x14 2 1/2	2'-7"	2'-7"	W/ST. BENT AT EXTERIOR WALL



SCIENCE AND MATHEMATICS BUILDING  
ST. CLOUD STATE COLLEGE  
ST. CLOUD, MINNESOTA

DEPARTMENT OF ADMINISTRATION  
STATE OF MINNESOTA  
ARCHITECTURAL AND ENGINEERING DIVISION  
ST. PAUL, MINNESOTA

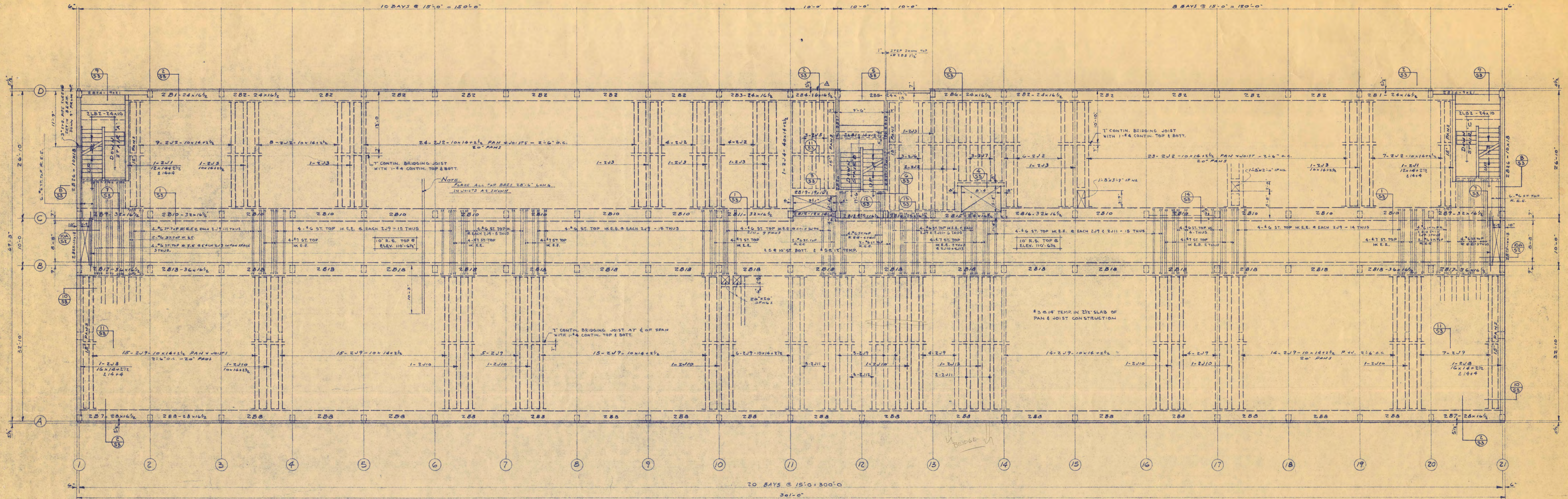
AJ. NELSON, STATE ARCHITECT

TRAYNOR AND HERMANSON, ARCHITECTS  
ST. CLOUD, MINN.  
GAUBMAN AND MOORE, INC., CONSULTING ENGINEERS  
ST. PAUL, MINN.  
JOHNSTON SAHLMAN CO., STRUCTURAL ENGINEERS  
MINNEAPOLIS, MINN.

7-18-58  
APPROVED BY PRESIDENT ST. CLOUD STATE COLLEGE  
APPROVED BY STATE COLLEGE BOARD  
APPROVED BY COMMISSIONER OF ADMINISTRATION  
AN AUTHORIZED SIGNATURE

SHEET NO. 3-2  
OF PROJECT NUMBER



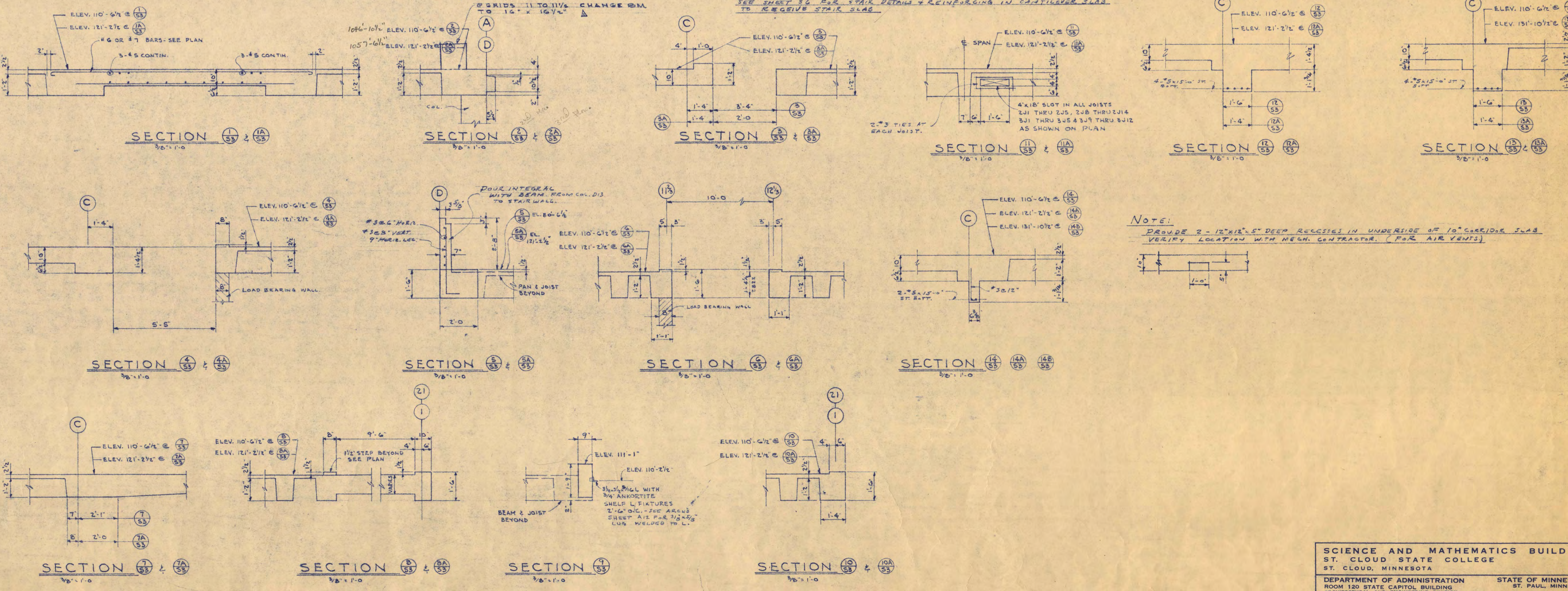


SECOND FLOOR FRAMING PLAN

NOTE:  
 THESE ARE TO REMAIN IN PLACE UNLESS JOIST & BEAM  
 2B19, 2B20, 2B21 UNTIL LOAD BEARING WALL (WEST WALL OF STAIR 'B')  
 IS IN PLACE.  
 SEE SHEET 56 FOR STAIR DETAIL & REINFORCING IN CAST-IN-PLACE SLAB  
 TO RECEIVE STAIR SLAB.

BEAM SCHEDULE					
MARK	B	D	SPACING	BENT	REMARKS
2B1	24	16 1/2	4'-5"	5'-5"	4" x 8" TIES
2B2	24	16 1/2	5'-4"	5'-5"	4" x 8" TIES
2B3	24	16 1/2	5'-4"	5'-5"	4" x 8" TIES
2B4	24	16 1/2	5'-5"	5'-5"	4" x 8" TIES
2B5	24	16 1/2	5'-5"	5'-5"	4" x 8" TIES
2B6	24	16 1/2	5'-4"	5'-5"	4" x 8" TIES
2B7	28	16 1/2	5'-4"	7'-5"	3/8" x 3" TIES
2B8	28	16 1/2	5'-4"	6'-5"	4" x 8" TIES
2B9	24	16 1/2	5'-5"	7'-5"	4" x 8" TIES
2B10	24	16 1/2	5'-4"	6'-5"	4" x 8" TIES
2B11	32	16 1/2	5'-4"	7'-5"	4" x 8" TIES
2B12	12	14	4'-5"		
2B13	24	16 1/2	4'-4"	4'-5"	4" x 8" TIES
2B14	24	16 1/2	4'-4"	4'-5"	4" x 8" TIES
2B15	24	16 1/2	4'-4"	4'-5"	4" x 8" TIES
2B16	24	16 1/2	5'-4"	6'-5"	4" x 8" TIES
2B17	36	16 1/2	6'-4"	6'-5"	4" x 8" TIES
2B18	36	16 1/2	6'-4"	7'-5"	4" x 8" TIES
2B19	19	16 1/2	3'-5"	5'-5"	
2B20	13	16 1/2	3'-5"		
2B21	13	16 1/2	3'-5"		
2B22	18	16 1/2	2'-6"	2'-6"	
2B23	13	16 1/2	3'-5"		
2B24	9	21	4'-9"		
2B25	10	18	3'-5"		
2B26	10	18	2'-4"	2'-4"	
2B27	16	12	2'-6"	2'-6"	
2B28	24	10	4'-5"	4'-5"	

JOIST SCHEDULE					
MARK	D x H	SPACING	BENT	REMARKS	
2J1	12	14	2'-6"	2'-6"	
2J2	10	14	2'-5"	2'-5"	
2J3	10	14	2'-6"	2'-6"	
2J4	10	14	2'-6"	2'-6"	
2J5	10	14	2'-5"	2'-5"	
2J6	10	14	2'-5"	2'-5"	
2J7	10	14	2'-5"	2'-5"	
2J8	10	14	2'-7"	2'-7"	
2J9	10	14	2'-6"	2'-6"	
2J10	10	14	2'-7"	2'-7"	
2J11	10	14	2'-6"	2'-6"	
2J12	10	14	2'-6"	2'-6"	
2J13	10	14	2'-7"	2'-7"	



NOTE:  
 PROVIDE 2" x 12" x 6" DEEP RECEIPTS IN UNDERSIDE OF 10" CONC. SLAB  
 VERIFY LOCATION WITH MECH. CONTRACTOR (FOR AIR VENTS)

SCIENCE AND MATHEMATICS BUILDING  
 ST. CLOUD STATE COLLEGE  
 ST. CLOUD, MINNESOTA

DEPARTMENT OF ADMINISTRATION  
 ROOM 120 STATE CAPITOL BUILDING  
 ST. PAUL, MINNESOTA

STATE OF MINNESOTA  
 ARCHITECTURAL AND ENGINEERING DIVISION

AJ NELSON, STATE ARCHITECT

TRAYNOR AND HERMANSON, ARCHITECTS  
 BAUMANN AND MOORE, INC. CONSULTING ENGINEERS  
 JOHNSTON SAHLMAN CO. STRUCTURAL ENGINEERS

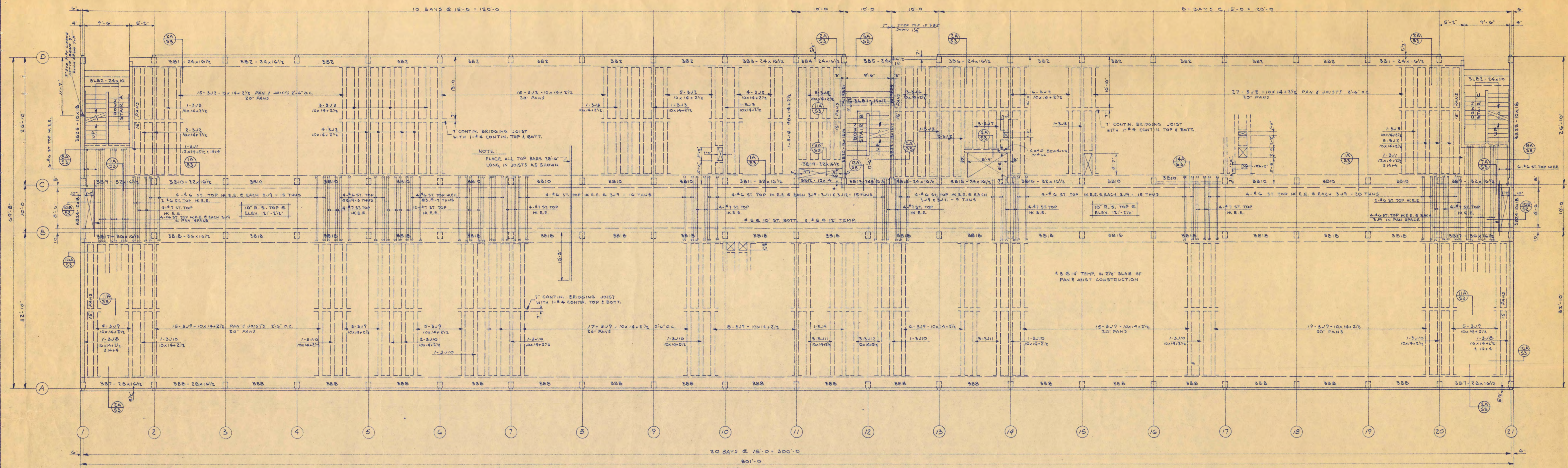
ST. CLOUD, MINN.  
 ST. PAUL, MINN.  
 MINNEAPOLIS, MINN.

DATE: 7-18-58

REVISIONS:  
 APPROVED BY: PRESIDENT OF ST. CLOUD STATE COLLEGE  
 APPROVED BY: STATE COLLEGE BOARD  
 APPROVED BY: COMMISSIONER OF ADMINISTRATION  
 AN AUTHORIZED SIGNATURE

SHEET NO. S-3  
 OF 7  
 STATE PROJECT NUMBER 2600





TOP OF R. S. ELEV. 121'-2 1/2"  
**THIRD FLOOR FRAMING PLAN**  
 1/8" = 1'-0"

**NOTE**  
 CHAIRS ARE TO REMAIN IN PLACE UNDER JOISTS JOIST BEAMS  
 B17, B20 & B21 UNTIL LOAD BEARING WALL (WEST WALL OF STAIRS)  
 IS IN PLACE.  
 SEE FIRST FLOOR STAIR DETAILS & REINFORCING IN CANTILEVER SWAS  
 TO BE CONCRETE STAIR SLAB.  
 EXTERIOR INTERIOR WALLS (EASTWEST) OF STAIRS 'A' & 'C' ARE LOAD BEARING  
 WALLS.  
 PROVIDE 2" DIA'S DEEP RECESSES IN UNDERSIDE OF 10" CORRIDOR SLAB  
 FOR AIR VENTS - VERIFY LOCATION WITH MECH. CONTRACTOR.

MARK	BEAM		SCHEDULE		REMARKS
	B	D	STRAIGHT	BENT	
B1	24	16 1/2	4'-5"	6'-5"	NO. STEEL SPINDLES EACH END
B2	24	16 1/2	5'-4"	5'-5"	ADD 3" REINFORC. AT END OF BEAM 3/8" DIA. BARS
B3	24	16 1/2	5'-4"	5'-5"	ADD 3" REINFORC. AT END OF BEAM 3/8" DIA. BARS
B4	24	16 1/2	5'-5"	5'-6"	ADD 3" REINFORC. AT END OF BEAM 3/8" DIA. BARS
B5	24	16 1/2	5'-5"	5'-6"	ADD 3" REINFORC. AT END OF BEAM 3/8" DIA. BARS
B6	24	16 1/2	5'-4"	5'-5"	ADD 3" REINFORC. AT END OF BEAM 3/8" DIA. BARS
B7	28	16 1/2	5'-4"	7'-5"	NO. STEEL SPINDLES EACH END
B8	28	16 1/2	5'-4"	6'-5"	NO. STEEL SPINDLES EACH END
B9	32	16 1/2	5'-4"	7'-5"	NO. STEEL SPINDLES EACH END
B10	32	16 1/2	5'-4"	6'-5"	NO. STEEL SPINDLES EACH END
B11	32	16 1/2	5'-4"	7'-5"	NO. STEEL SPINDLES EACH END
B12	12	14	4'-5"	4'-5"	NO. STEEL SPINDLES EACH END
B13	24	16 1/2	4'-4"	4'-5"	NO. STEEL SPINDLES EACH END
B14	24	16 1/2	4'-4"	4'-5"	NO. STEEL SPINDLES EACH END
B15	24	16 1/2	4'-4"	4'-5"	NO. STEEL SPINDLES EACH END
B16	32	16 1/2	5'-4"	6'-5"	NO. STEEL SPINDLES EACH END
B17	36	16 1/2	6'-4"	5'-5"	NO. STEEL SPINDLES EACH END
B18	36	16 1/2	6'-4"	7'-5"	NO. STEEL SPINDLES EACH END
B19	22	14 1/2	3'-5"	3'-5"	NO. STEEL SPINDLES EACH END
B20	8	5	3'-6"	3'-6"	NO. STEEL SPINDLES EACH END
B21	13	16 1/2	3'-5"	3'-5"	NO. STEEL SPINDLES EACH END
B22	13	16 1/2	2'-6"	2'-6"	NO. STEEL SPINDLES EACH END
B23	13	16 1/2	3'-5"	3'-5"	NO. STEEL SPINDLES EACH END
B24	10	18	3'-5"	3'-5"	NO. STEEL SPINDLES EACH END
B25	10	18	2'-6"	2'-6"	NO. STEEL SPINDLES EACH END
B1	14	12	2'-4"	2'-4"	NO. STEEL SPINDLES EACH END
B2	24	10	4'-5"	4'-5"	NO. STEEL SPINDLES EACH END

MARK	JOIST		SCHEDULE		REMARKS
	b x d	STRAIGHT	BENT	REMARKS	
J1	12x14 1/2	2'-6"	2'-6"	ADD 2" REINFORC. AT END OF JOIST 3/8" DIA. BARS	
J2	10x14 1/2	2'-5"	2'-5"	ADD 2" REINFORC. AT END OF JOIST 3/8" DIA. BARS	
J3	10x14 1/2	2'-6"	2'-6"	ADD 2" REINFORC. AT END OF JOIST 3/8" DIA. BARS	
J4	10x14 1/2	2'-6"	2'-6"	ADD 2" REINFORC. AT END OF JOIST 3/8" DIA. BARS	
J5	10x14 1/2	2'-5"	2'-5"	ADD 2" REINFORC. AT END OF JOIST 3/8" DIA. BARS	
J6	10x14 1/2	2'-5"	2'-5"	ADD 2" REINFORC. AT END OF JOIST 3/8" DIA. BARS	
J7	10x14 1/2	2'-5"	2'-5"	ADD 2" REINFORC. AT END OF JOIST 3/8" DIA. BARS	
J8	10x14 1/2	2'-7"	2'-7"	ADD 2" REINFORC. AT END OF JOIST 3/8" DIA. BARS	
J9	10x14 1/2	2'-6"	2'-6"	ADD 2" REINFORC. AT END OF JOIST 3/8" DIA. BARS	
J10	10x14 1/2	2'-7"	2'-7"	ADD 2" REINFORC. AT END OF JOIST 3/8" DIA. BARS	
J11	10x14 1/2	2'-6"	2'-6"	ADD 2" REINFORC. AT END OF JOIST 3/8" DIA. BARS	
J12	10x14 1/2	2'-6"	2'-6"	ADD 2" REINFORC. AT END OF JOIST 3/8" DIA. BARS	

**SCIENCE AND MATHEMATICS BUILDING**  
 ST. CLOUD STATE COLLEGE  
 ST. CLOUD, MINNESOTA

DEPARTMENT OF ADMINISTRATION STATE OF MINNESOTA  
 ROOM 120 STATE CAPITOL BUILDING ST. PAUL, MINNESOTA  
 ARCHITECTURAL AND ENGINEERING DIVISION

A.J. NELSON, STATE ARCHITECT

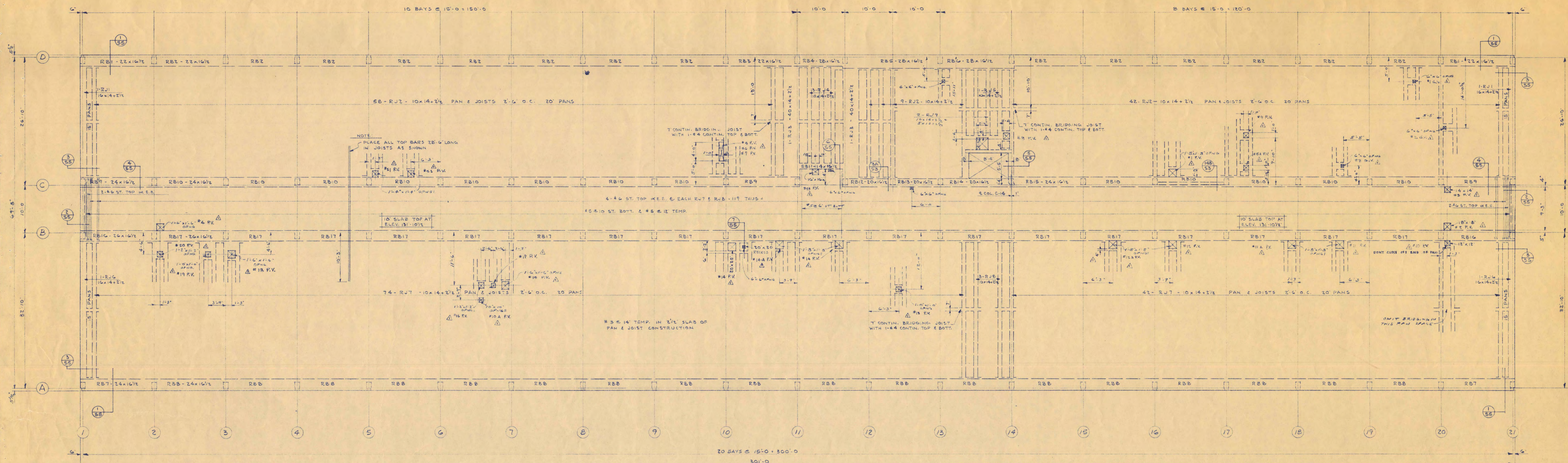
TRAYNOR AND HERMANSON, ARCHITECTS ST. CLOUD, MINN.  
 RAUBER AND MOORE INC. CONSULTING ENGINEERS ST. PAUL, MINN.  
 JOHNSON BAKHAM CO. STRUCTURAL ENGINEERS MINNEAPOLIS, MINN.

DATE: 7-18-53  
 REVISION: A 4-22-60  
 DRAWN BY: J.W.S. J.D.  
 CHECKED BY:

APPROVED BY: PRESIDENT ST. CLOUD STATE COLLEGE  
 APPROVED BY: STATE COLLEGE BOARD  
 APPROVED BY: COMMISSIONER OF ADMINISTRATION

SHEET NO. 4  
 OF 7  
 STATE PROJECT NUMBER 2600

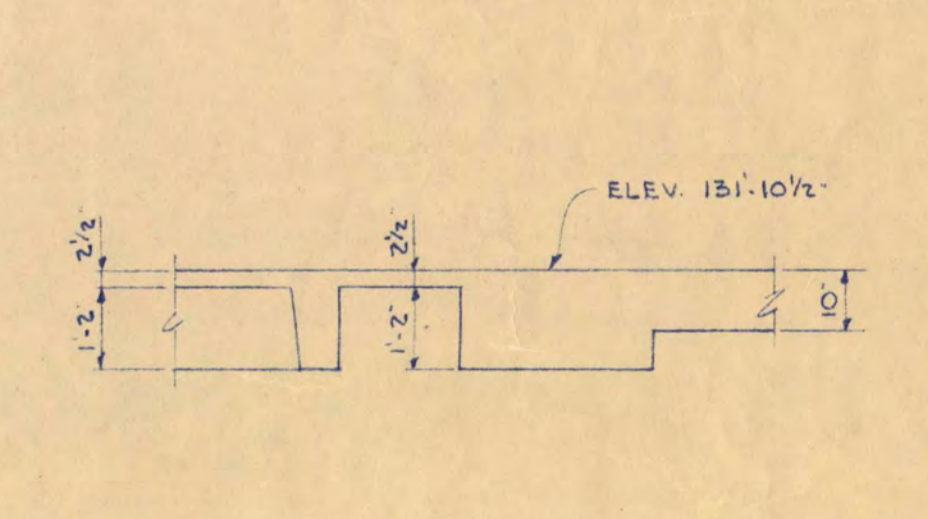
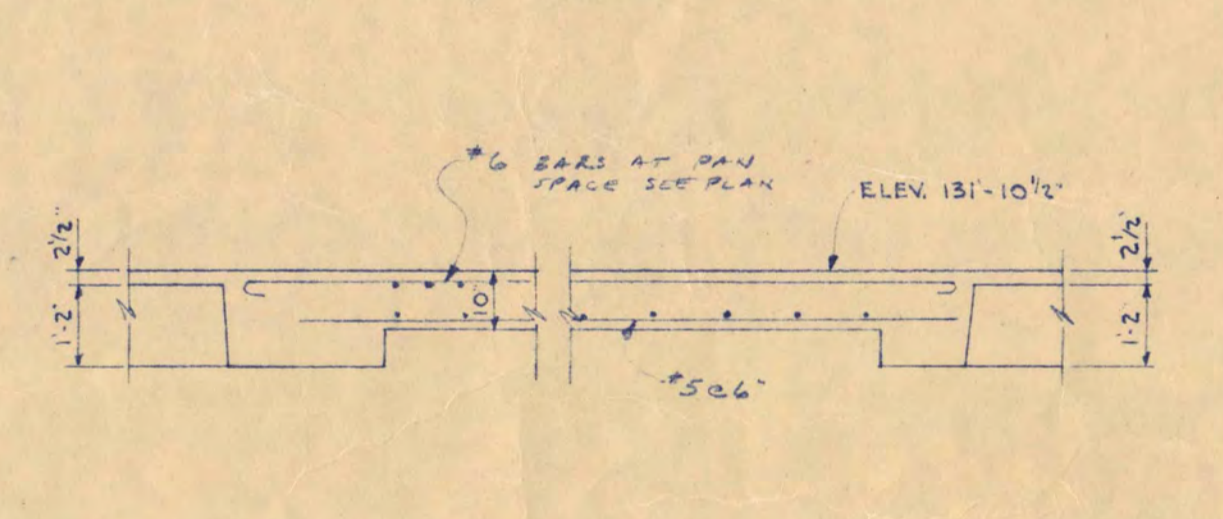
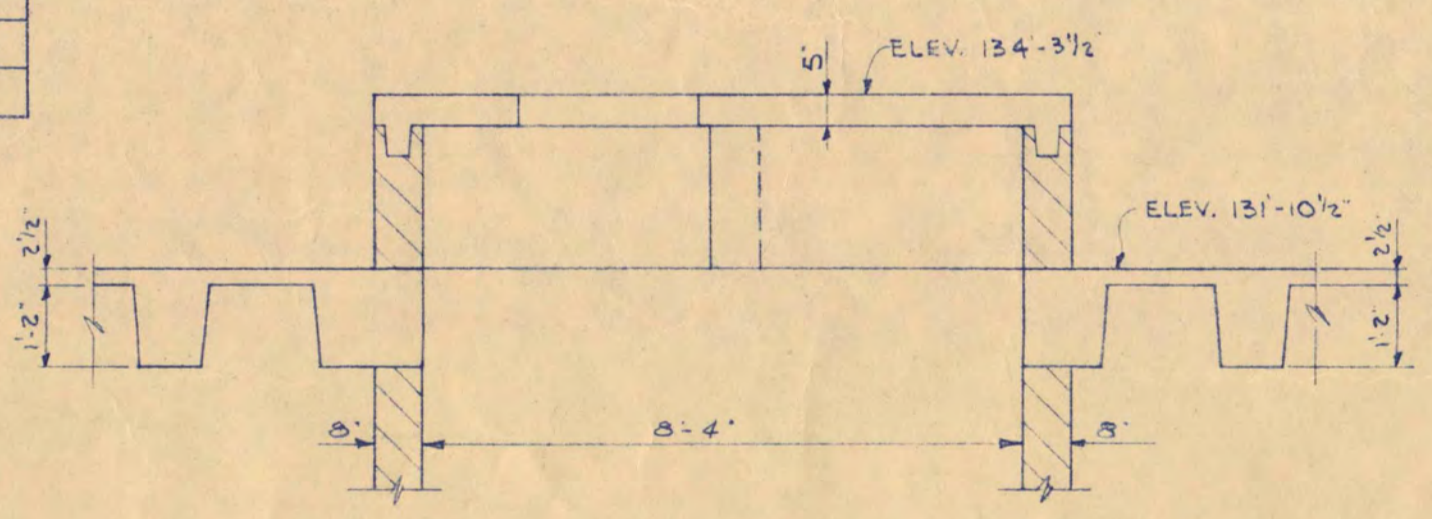
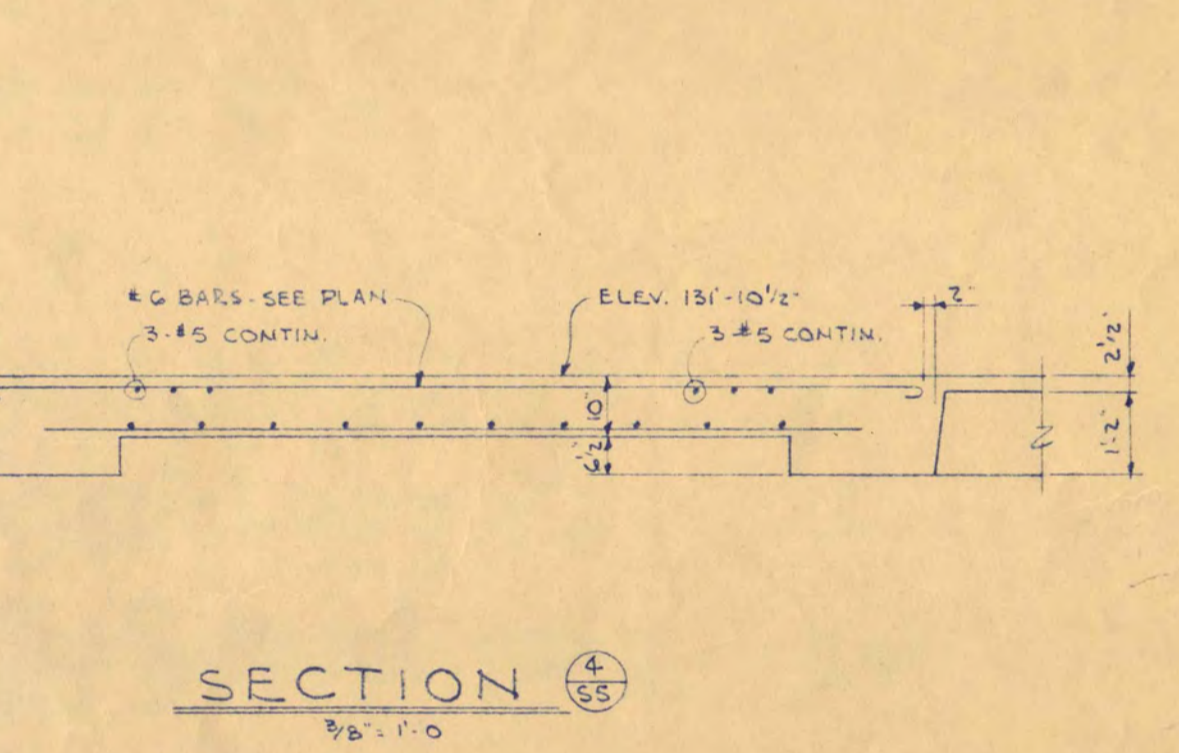
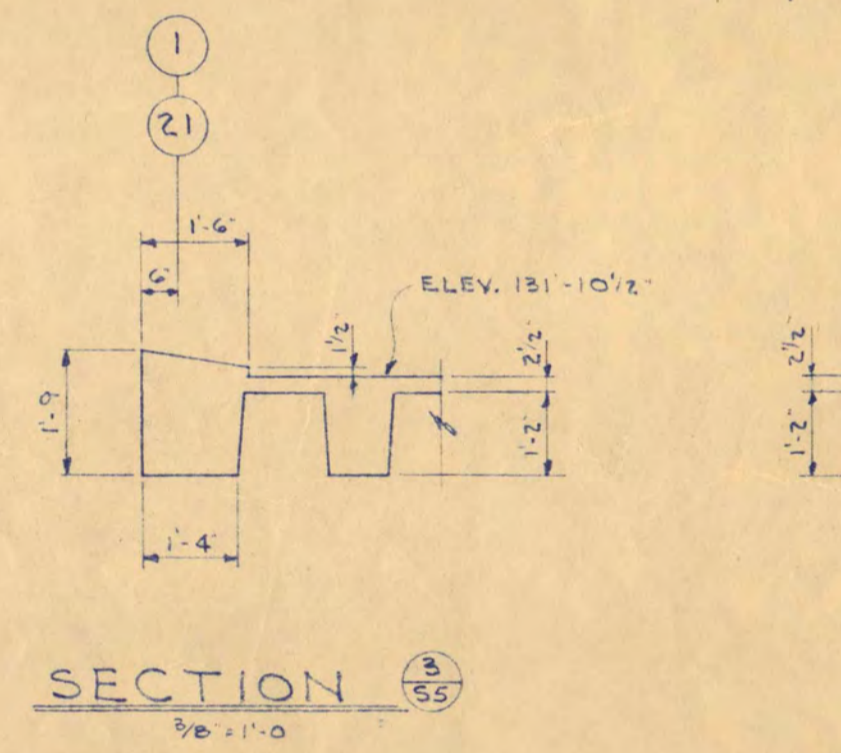
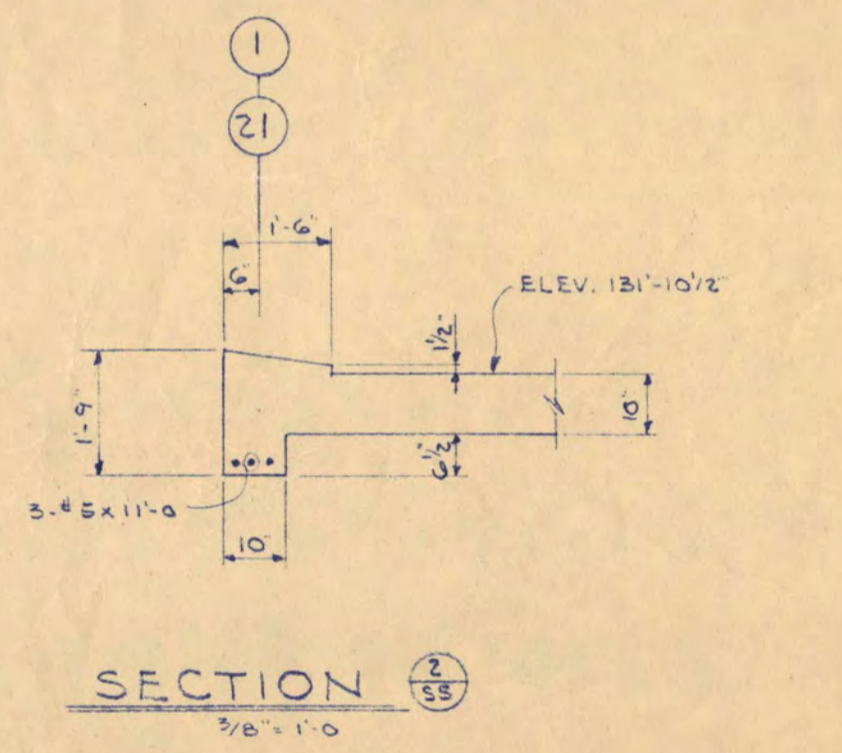
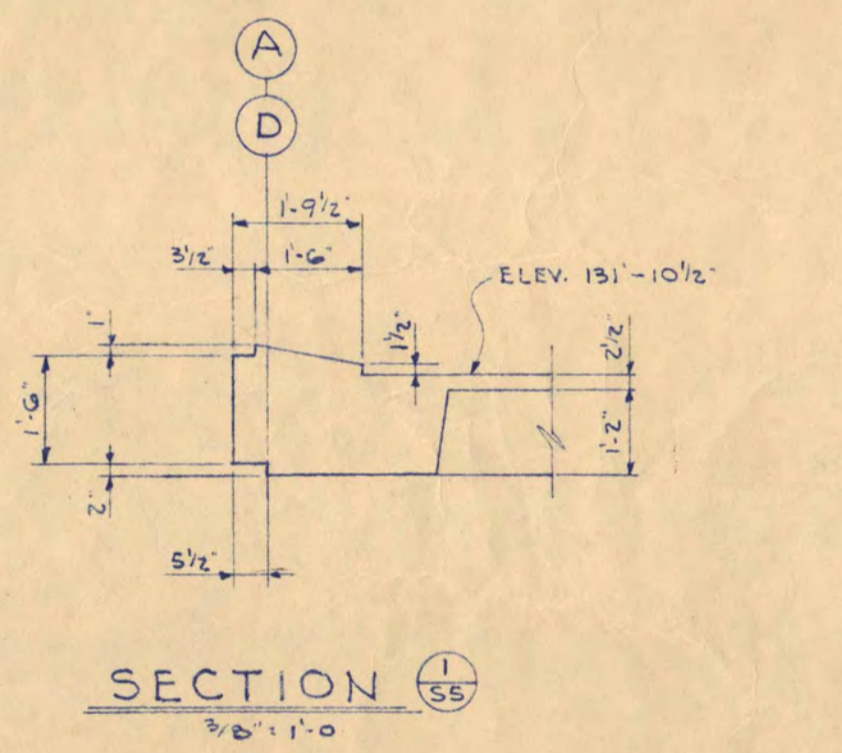
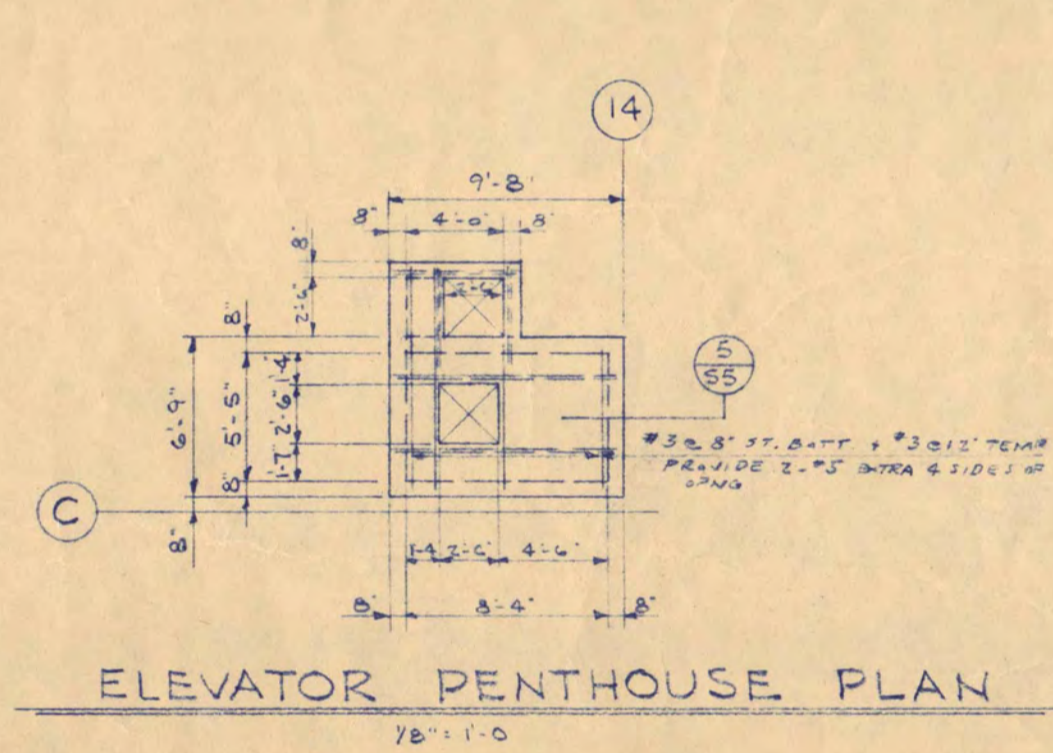




TOP OF SLAB ELEV. 131'-10 1/2"  
**ROOF FRAMING PLAN**  
 1/8" = 1'-0"

**NOTE:**  
 PROVIDE 3" x 12" x 6" DEEP RECEDES IN UNDERSIDE OF 10" CONCRETE SLAB FOR AIR FLOW - VERIFY LOCATION WITH MECH. CONTRACTOR

MARK	B	D	BEAM SCHEDULE		REMARKS
			STRAIGHT	BENT	
RB1	22	16 1/2"	4'-5"	#3	ADD 3/8" ST. CONTINUOUS LAP AT E. END
RB2	23	16 1/2"	4'-5"	#3	IN RB1 - 8' ST. TOP
RB3	22	16 1/2"	4'-5"	#3	IN RB1 - 8' ST. TOP
RB4	28	16 1/2"	4'-5"	#3	IN RB1 - 8' ST. TOP
RB5	28	16 1/2"	7'-5"	#3	ADD 1/2" ST. CONTINUOUS LAP AT E. END
RB6	28	16 1/2"	4'-5"	#3	IN RB1 - 8' ST. TOP
RB7	24	16 1/2"	7'-5"	#3	ADD 1/2" ST. CONTINUOUS LAP AT E. END
RB8	24	16 1/2"	7'-5"	#3	ADD 1/2" ST. CONTINUOUS LAP AT E. END
RB9	24	16 1/2"	8'-5"	#3	ADD 1/2" ST. CONTINUOUS LAP AT E. END
RB10	24	16 1/2"	8'-5"	#3	ADD 1/2" ST. CONTINUOUS LAP AT E. END
RB11	14	16 1/2"	3'-5"	3'-6"	ADD 1/2" ST. CONTINUOUS LAP AT E. END
RB12	20	16 1/2"	5'-5"	#3	ADD 1/2" ST. CONTINUOUS LAP AT E. END
RB13	20	16 1/2"	5'-5"	#3	ADD 1/2" ST. CONTINUOUS LAP AT E. END
RB14	20	16 1/2"	6'-5"	#3	ADD 1/2" ST. CONTINUOUS LAP AT E. END
RB15	24	16 1/2"	8'-5"	#3	ADD 1/2" ST. CONTINUOUS LAP AT E. END
RB16	24	16 1/2"	9'-5"	#3	ADD 1/2" ST. CONTINUOUS LAP AT E. END
RB17	24	16 1/2"	9'-5"	#3	ADD 1/2" ST. CONTINUOUS LAP AT E. END



MARK	B x d	JOIST SCHEDULE		REMARKS
		STRAIGHT	BENT	
RJ1	16x14 1/2"	2'-6"	2'-6"	ADD 1/2" ST. CONTINUOUS LAP AT E. END
RJ2	16x14 1/2"	2'-5"	2'-5"	ADD 1/2" ST. CONTINUOUS LAP AT E. END
RJ3	40x14 1/2"	6'-6"	6'-6"	ADD 1/2" ST. CONTINUOUS LAP AT E. END
RJ4	16x14 1/2"	2'-5"	2'-5"	ADD 1/2" ST. CONTINUOUS LAP AT E. END
RJ5	16x14 1/2"	2'-4"	2'-5"	ADD 1/2" ST. CONTINUOUS LAP AT E. END
RJ6	16x14 1/2"	2'-6"	2'-6"	ADD 1/2" ST. CONTINUOUS LAP AT E. END
RJ7	16x14 1/2"	2'-5"	2'-6"	ADD 1/2" ST. CONTINUOUS LAP AT E. END
RJ8	16x14 1/2"	2'-6"	2'-6"	ADD 1/2" ST. CONTINUOUS LAP AT E. END
RJ9	16x14 1/2"	1'-7"	1'-7"	ADD 1/2" ST. CONTINUOUS LAP AT E. END

**SCIENCE AND MATHEMATICS BUILDING**  
 ST. CLOUD STATE COLLEGE  
 ST. CLOUD, MINNESOTA

DEPARTMENT OF ADMINISTRATION  
 ARCHITECTURAL AND ENGINEERING DIVISION

A.J. NELSON, STATE ARCHITECT

TRAYNOR AND HERMANSON, ARCHITECTS  
 BAHLMAN AND MOORE, INC. CONSULTING ENGINEERS  
 JOHNSTON BAHLMAN CO. STRUCTURAL ENGINEERS

ST. CLOUD, MINN.  
 ST. PAUL, MINN.  
 MINNEAPOLIS, MINN.

DATE: 7-15-58

APPROVED BY: PRESIDENT ST. CLOUD STATE COLLEGE  
 APPROVED BY: STATE COLLEGE BOARD  
 APPROVED BY: COMMISSIONER OF ADMINISTRATION

SHEET NO. S-5  
 OF 7  
 STATE PROJECT NUMBER 2600