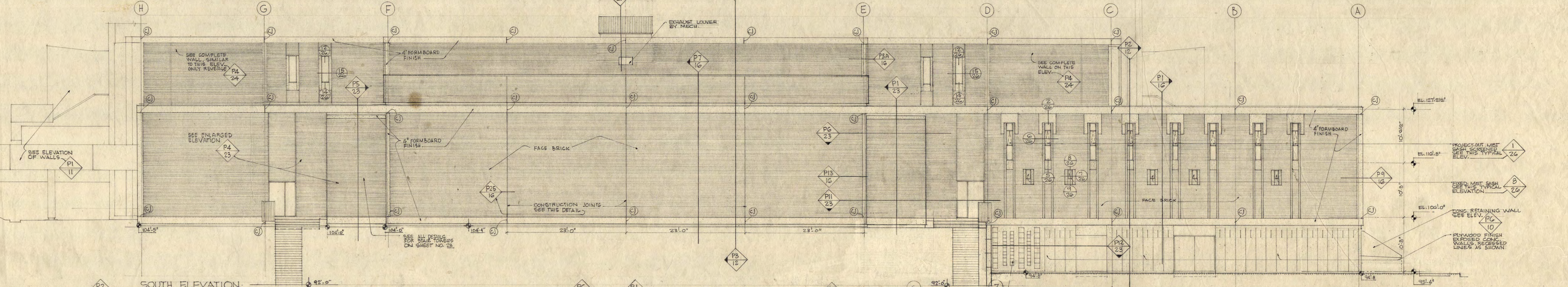
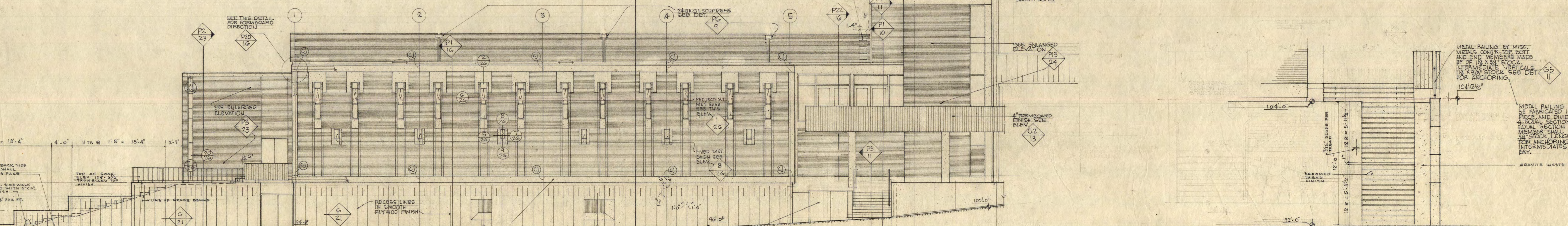


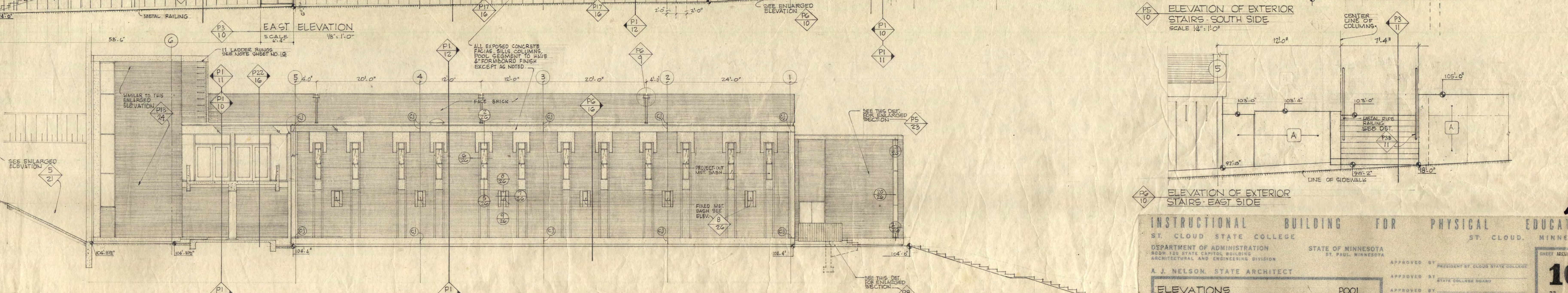
NORTH ELEVATION-SECTION THRU RAMPS, ENTRIES-CORRIDORS BETWEEN POOL AND GYMNASIUM



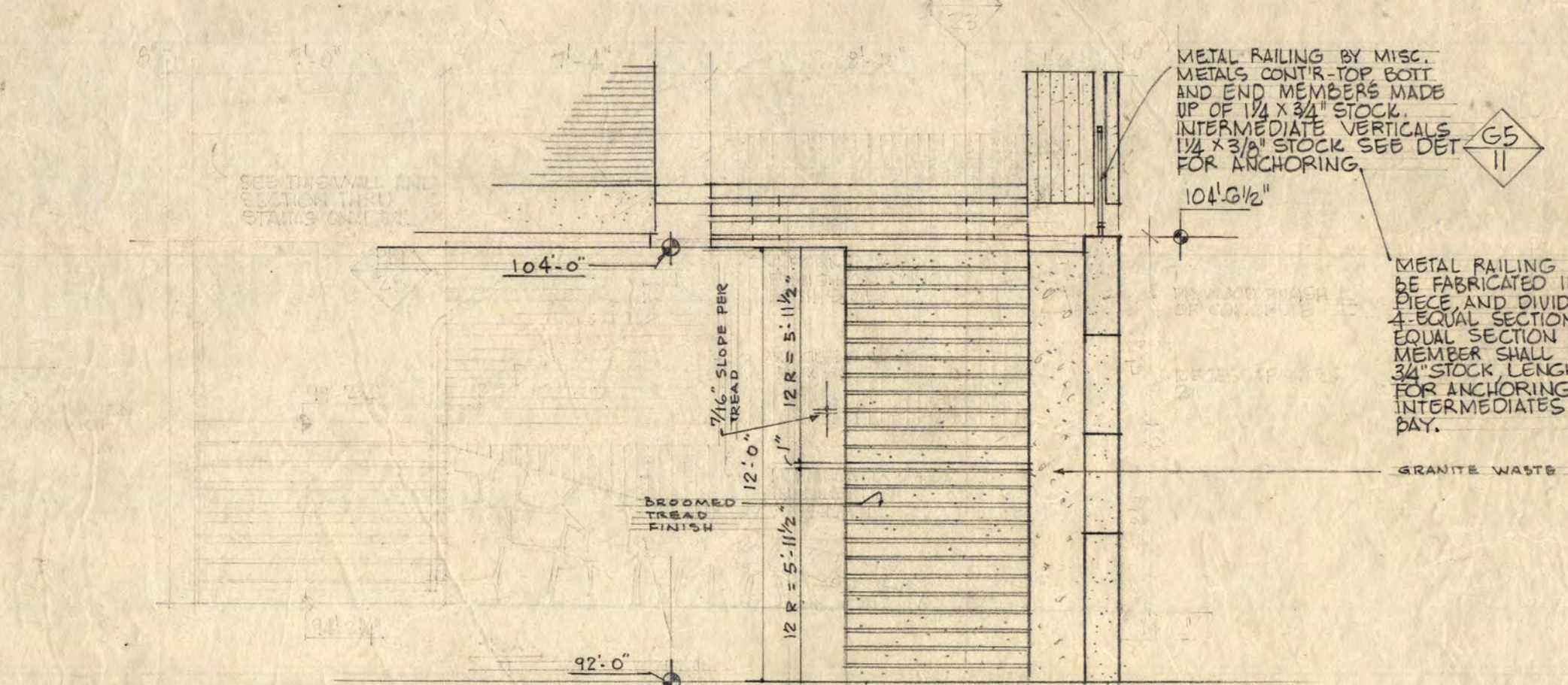
SOUTH ELEVATION SCALE 1/8" = 1'-0"



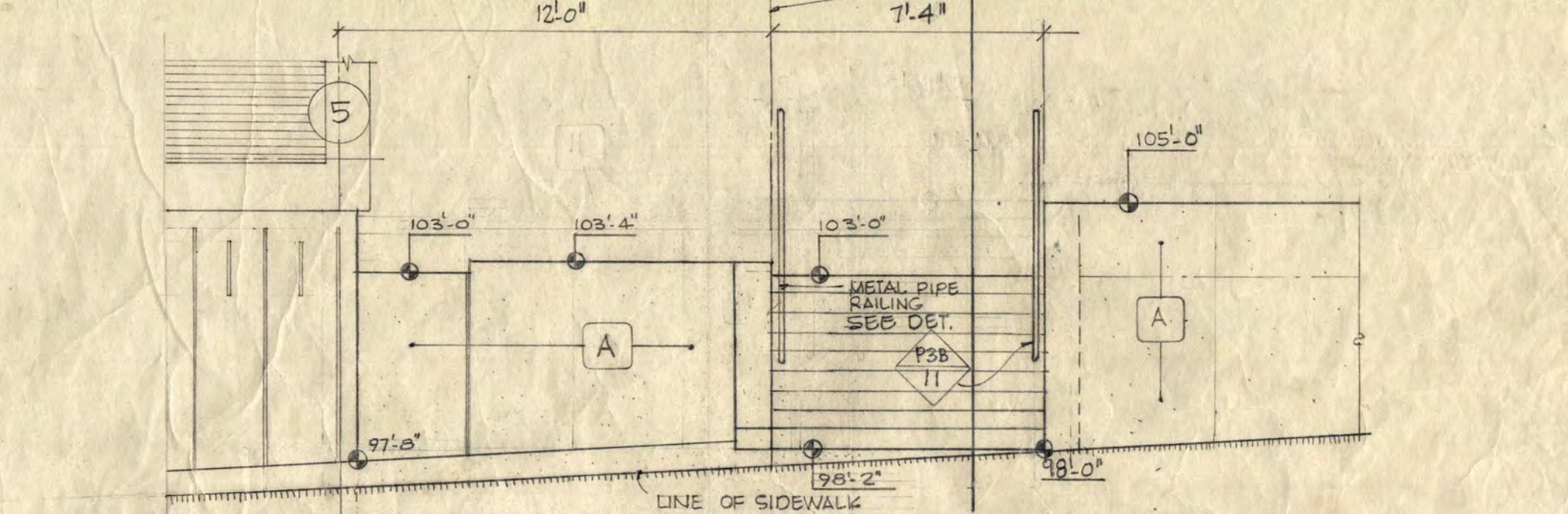
EAST ELEVATION SCALE 1/8" = 1'-0"



WEST ELEVATION



ELEVATION OF EXTERIOR STAIRS - SOUTH SIDE SCALE 1/4" = 1'-0"

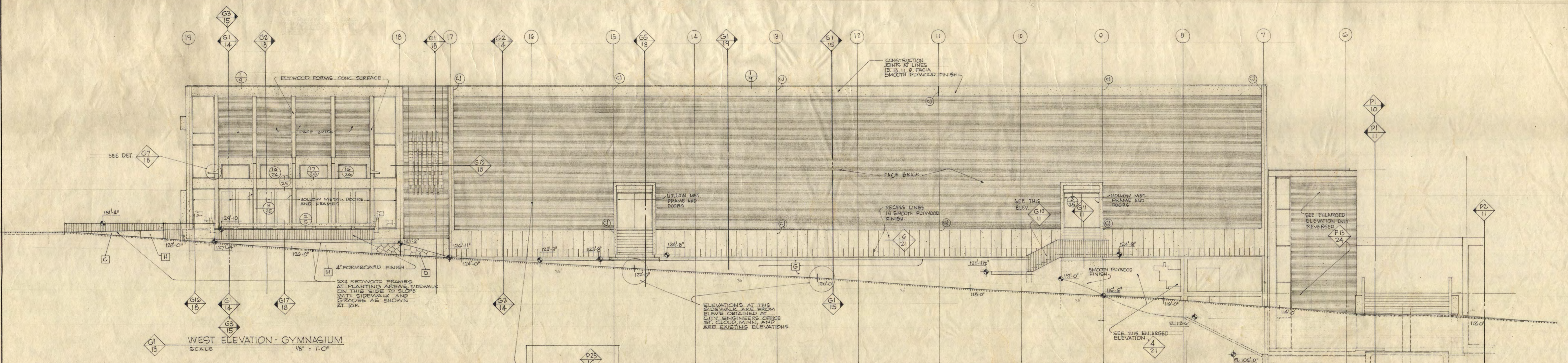


ELEVATION OF EXTERIOR STAIRS - EAST SIDE

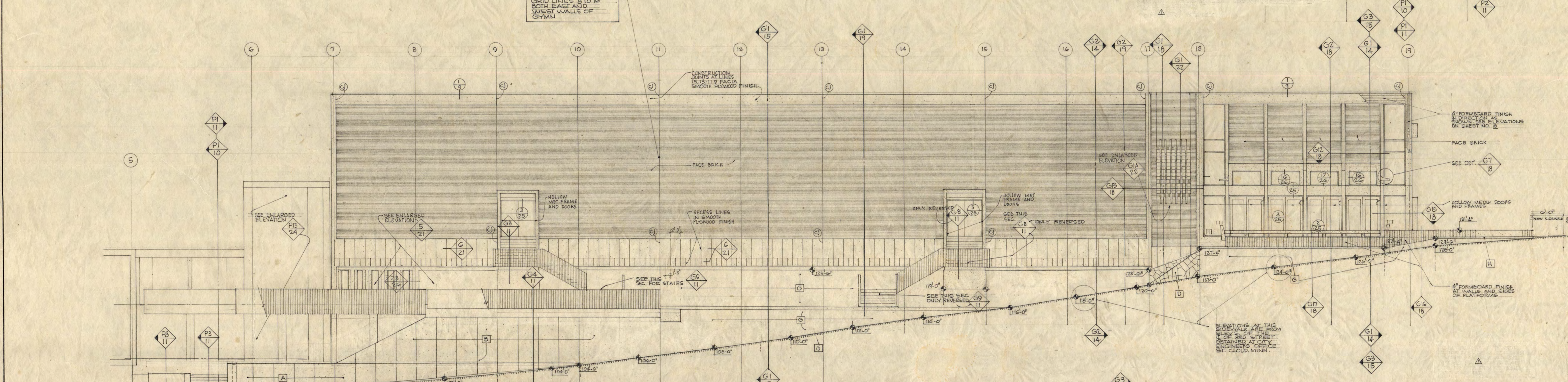
INSTRUCTIONAL BUILDING FOR PHYSICAL EDUCATION  
 ST. CLOUD STATE COLLEGE ST. CLOUD, MINNESOTA  
 DEPARTMENT OF ADMINISTRATION STATE OF MINNESOTA  
 ROOM 130 STATE CAPITOL BUILDING ARCHITECTURAL AND ENGINEERING DIVISION  
 A. J. NELSON, STATE ARCHITECT APPROVED BY PRESIDENT OF ST. CLOUD STATE COLLEGE  
 APPROVED BY STATE COLLEGE BOARD  
 APPROVED BY COMMISSIONER OF ADMINISTRATION  
 AN AUTHORIZED SIGNATURE  
**ELEVATIONS POOL**  
 TRAYNOR AND HERMANSON ARCHITECTS ST. CLOUD DATE 1-11-23  
 STRUCTURAL ENGINEERS: JOHNSON & SHELMAN MINNEAPOLIS, MINN. DRAWN RAS: FVT  
 CONSULTING ENGINEERS: SAUSMAN & MOORE, INC. ST. PAUL, MINN. CHECKED FVT  
 AS BUILT  
 SHEET NO. 10 OF 38  
 STATE PROJECT NUMBER 3425



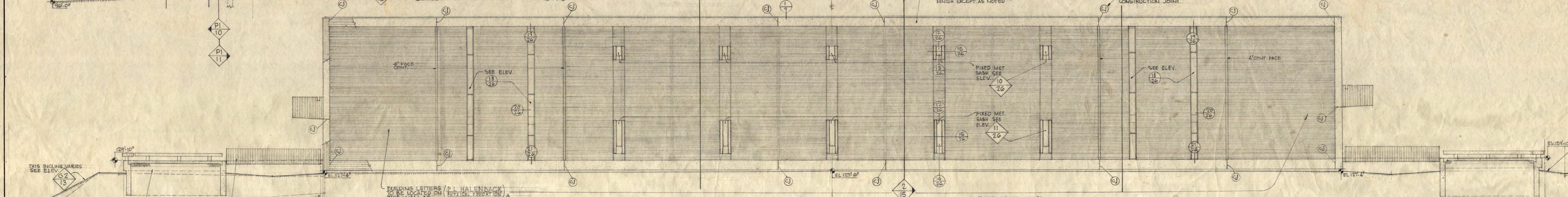




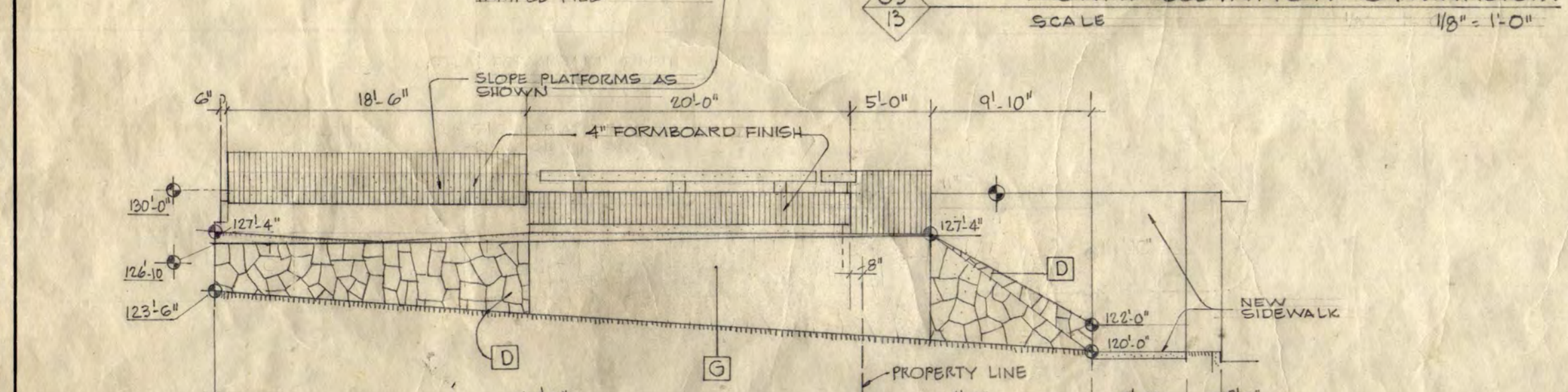
WEST ELEVATION - GYMNASIUM  
SCALE 1/8" = 1'-0"



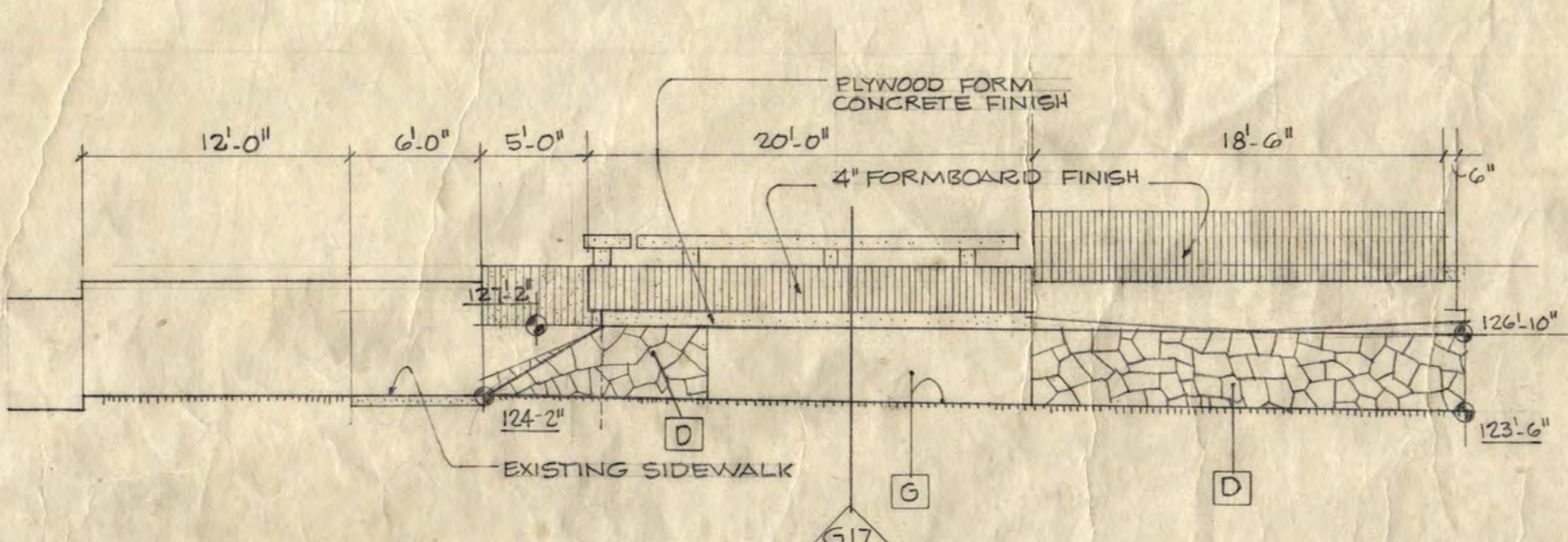
EAST ELEVATION - GYMNASIUM  
SCALE 1/8" = 1'-0"



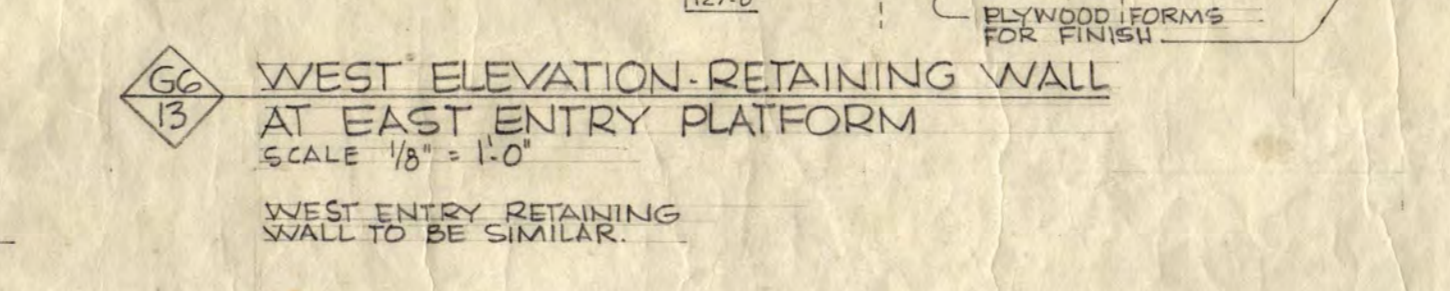
NORTH ELEVATION - GYMNASIUM  
SCALE 1/8" = 1'-0"



SOUTH ELEVATION - EAST ENTRY PLATFORM  
SCALE 1/8" = 1'-0"



SOUTH ELEVATION - WEST ENTRY PLATFORM  
SCALE 1/8" = 1'-0"



WEST ELEVATION - RETAINING WALL AT EAST ENTRY PLATFORM  
SCALE 1/8" = 1'-0"

**INSTRUCTIONAL BUILDING FOR PHYSICAL EDUCATION**  
ST. CLOUD STATE COLLEGE ST. CLOUD, MINNESOTA  
DEPARTMENT OF ADMINISTRATION STATE OF MINNESOTA  
ROOM 120 STATE CAPITOL BUILDING ST. PAUL, MINNESOTA  
ARCHITECTURAL AND ENGINEERING DIVISION

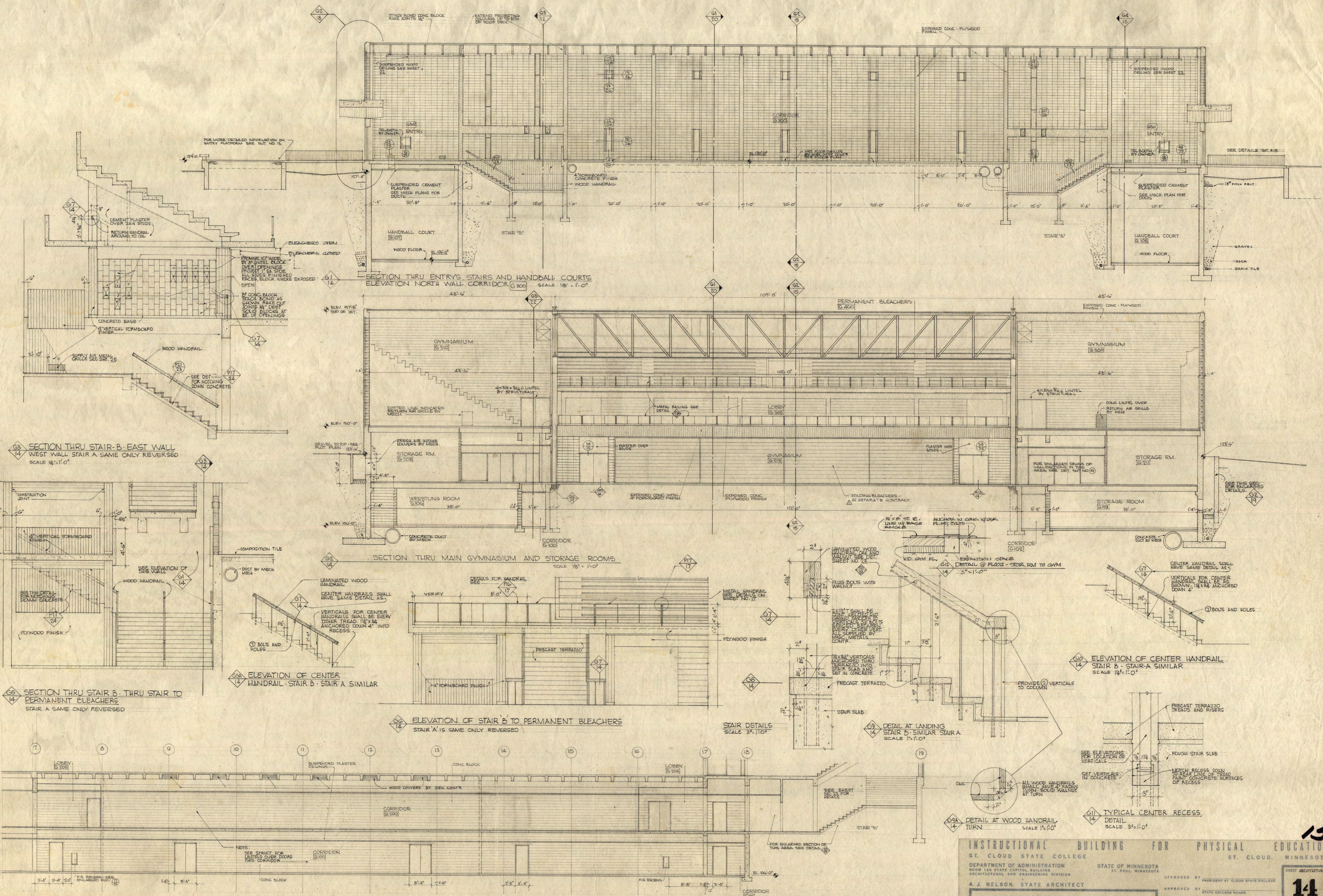
APPROVED BY: PRESIDENT ST. CLOUD STATE COLLEGE  
APPROVED BY: STATE COLLEGE BOARD  
APPROVED BY: COMMISSIONER OF ADMINISTRATION  
AN AUTHORIZED SIGNATORY

A. J. NELSON, STATE ARCHITECT  
ELEVATIONS GYMNASIUM GYM

FRAYTOR and HERMANSON ARCHITECTS ST. CLOUD  
STRUCTURAL ENGINEERS: JOHNSTON & SAILSWAY MINNEAPOLIS, MINN.  
CONSULTING ENGINEERS: SAUBER & ROORE, INC. ST. PAUL, MINN.

DATE: 7-17-03  
BY: RAG  
CHECKED: [Signature]

14  
13  
3425



G2 SECTION THRU STAIR B - EAST WALL  
WEST WALL STAIR A SAME ONLY REVERSED  
SCALE 1/4" = 1'-0"

SECTION THRU ENTRY, STAIRS AND HANDBALL COURT  
ELEVATION NORTH WALL CORRIDOR G-200  
SCALE 1/8" = 1'-0"

SECTION THRU MAIN GYMNASIUM AND STORAGE ROOMS  
SCALE 1/8" = 1'-0"

G6A ELEVATION OF CENTER  
HANDRAIL - STAIR B - STAIR A SIMILAR

G6B ELEVATION OF STAIR B TO PERMANENT BLEACHERS  
STAIR A IS SAME ONLY REVERSED

G8 SECTION THRU STAIR B - THRU STAIR TO  
PERMANENT BLEACHERS  
STAIR A SAME ONLY REVERSED

G4 ELEVATION OF WEST WALL OF CORRIDORS G-100 & G-200

**INSTRUCTIONAL BUILDING FOR PHYSICAL EDUCATION**  
 ST. CLOUD STATE COLLEGE ST. CLOUD, MINNESOTA  
 DEPARTMENT OF ADMINISTRATION ROOM 125 STATE CAPITOL BUILDING ST. PAUL, MINNESOTA  
 ARCHITECTURAL AND ENGINEERING DIVISION

APPROVED BY: PRESIDENT ST. CLOUD STATE COLLEGE  
 APPROVED BY: STATE COLLEGE BOARD  
 APPROVED BY: COMMISSIONER OF ADMINISTRATION  
 APPROVED BY: ARCHITECTURAL AND ENGINEERING DIVISION

A. J. NELSON, STATE ARCHITECT  
 CROSS SECTIONS GYM  
 TRAYNOR AND HERMANSON ARCHITECTS ST. CLOUD  
 STRUCTURAL ENGINEERS: JOHNSTON & SAHLMAN MINNEAPOLIS, MINN.  
 CONSULTING ENGINEERS: GAUSMAN & ROOSE, INC. ST. PAUL, MINN. CHECKED

DATE: 1-17-43  
 DRAWN: LLW:RAG  
 AS BUILT

STATE PROJECT NUMBER: 3425  
 SHEET ARCHITECTURAL: 14 OF 33