

TRUSS NOTES

1. ALL SHOP CONNECTIONS TO BE WELDED.
2. WELDS SHALL DEVELOP STRESSES AT LEAST EQUAL TO FORCES SHOWN FOR EACH MEMBER.
3. MAXIMUM THROAT OF FILLET WELDS TO BE FIGURED 1/16 INCH LESS THAN THICKNESS OF ATTACHED MEMBER. MAXIMUM LENGTH OF EFFECTIVE WELD TO BE FIGURED AT LEAST 1/4 INCH LESS THAN LENGTH PROVIDED. MIN. LENGTH OF WELDS = 1 INCH.
4. ALLOWABLE WELD STRESSES:
 - 3/16" FILLET = 1,800 #/I
 - 1/4" FILLET = 2,400 #/I
 - 5/16" FILLET = 3,000 #/I
 - 3/8" FILLET = 3,600 #/I
5. PROVIDE GUSSET PLATES OF EQUAL THICKNESS AT THE STEM OF THE TEE AT JOINTS, WHERE NECESSARY TO DEVELOP REQUIRED LENGTH OF WELD.
6. DOUBLE BEVEL BUT JOINTS FOR GUSSET PLATES SHALL DEVELOP FULL STRENGTH OF THE STRUCTURAL SECTION. GRIND SMOOTH WHERE NECESSARY.
7. PROVIDE FILLER PLATES AND STITCH WELDS AT CENTER LINE OF ALL DOUBLE ANGLE MEMBERS.
8. ALL FIELD CONNECTIONS TO BE 7/8" H HIGH STRENGTH BOLTS, EXCEPT WHERE NOTED.
9. BOLT SPACING, AS SHOWN, AND AS PER A.I.S.C. CODE, SECTS. 23 & 23B AND 23C.
10. SHOW WELDS USING A.W.S. SYMBOLS.

SUBMIT SHOP DRAWINGS FOR APPROVAL.

LATERAL BRACING

USE L3x3x1/4 AS INDICATED ON ROOF FRAMING PLAN.

ALL CONNECTIONS AT PANEL POINTS TO BE DESIGNED FOR 5000# COMP. OR TENSION.

INSTRUCTIONAL BUILDING FOR PHYSICAL EDUCATION

ST. CLOUD STATE COLLEGE ST. CLOUD, MINNESOTA

DEPARTMENT OF ADMINISTRATION STATE OF MINNESOTA

ROOM 120 STATE CAPITOL BUILDING ST. PAUL, MINNESOTA

ARCHITECTURAL AND ENGINEERING DIVISION

A. J. NELSON, STATE ARCHITECT

APPROVED BY: PRESIDENT ST. CLOUD STATE COLLEGE

APPROVED BY: STATE COLLEGE BOARD

APPROVED BY: COMMISSIONER OF ADMINISTRATION

AN AUTHORIZED SIGNATURE

GYM. TRUSS DETAILS

TRAYNOR AND HERMANSON ARCHITECTS ST. CLOUD

DATE 1-17-1963

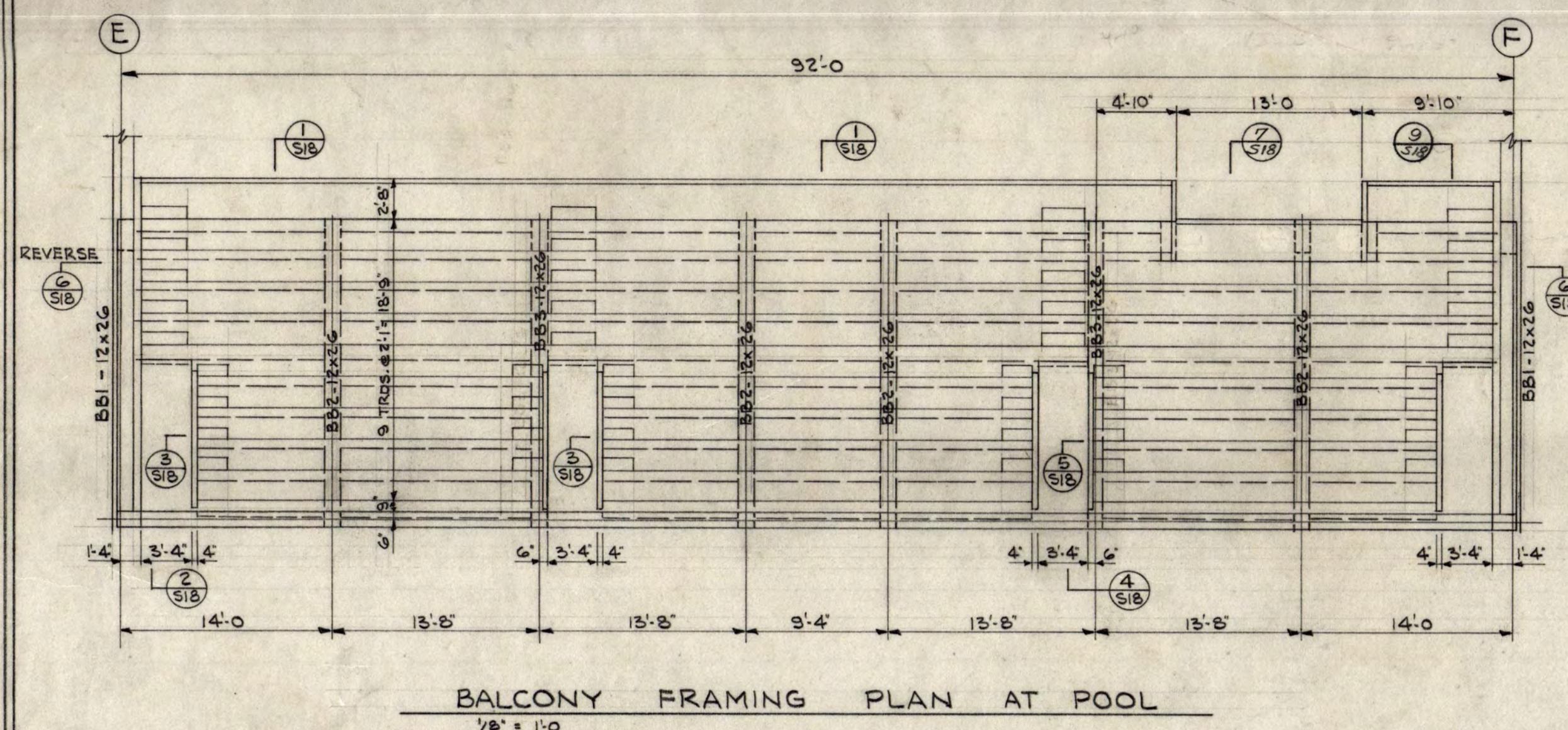
REVISION: AS BUILT

STRUCTURAL ENGINEERS: JOHNSTON & SALLMAN MINNEAPOLIS, MINN.

CONSULTING ENGINEERS: GAUSMAN & MOORE, INC. ST. PAUL, MINN. CHECKED J.W.S.

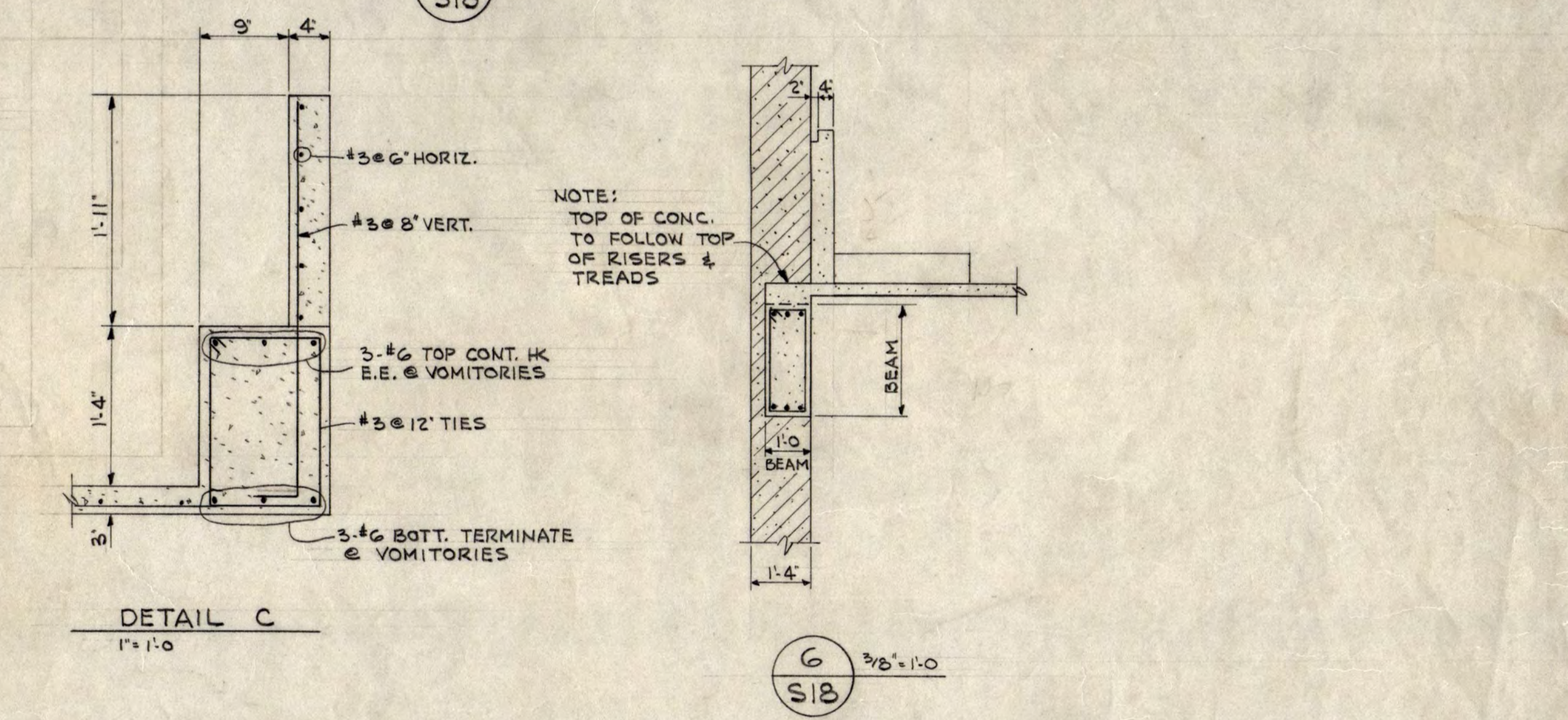
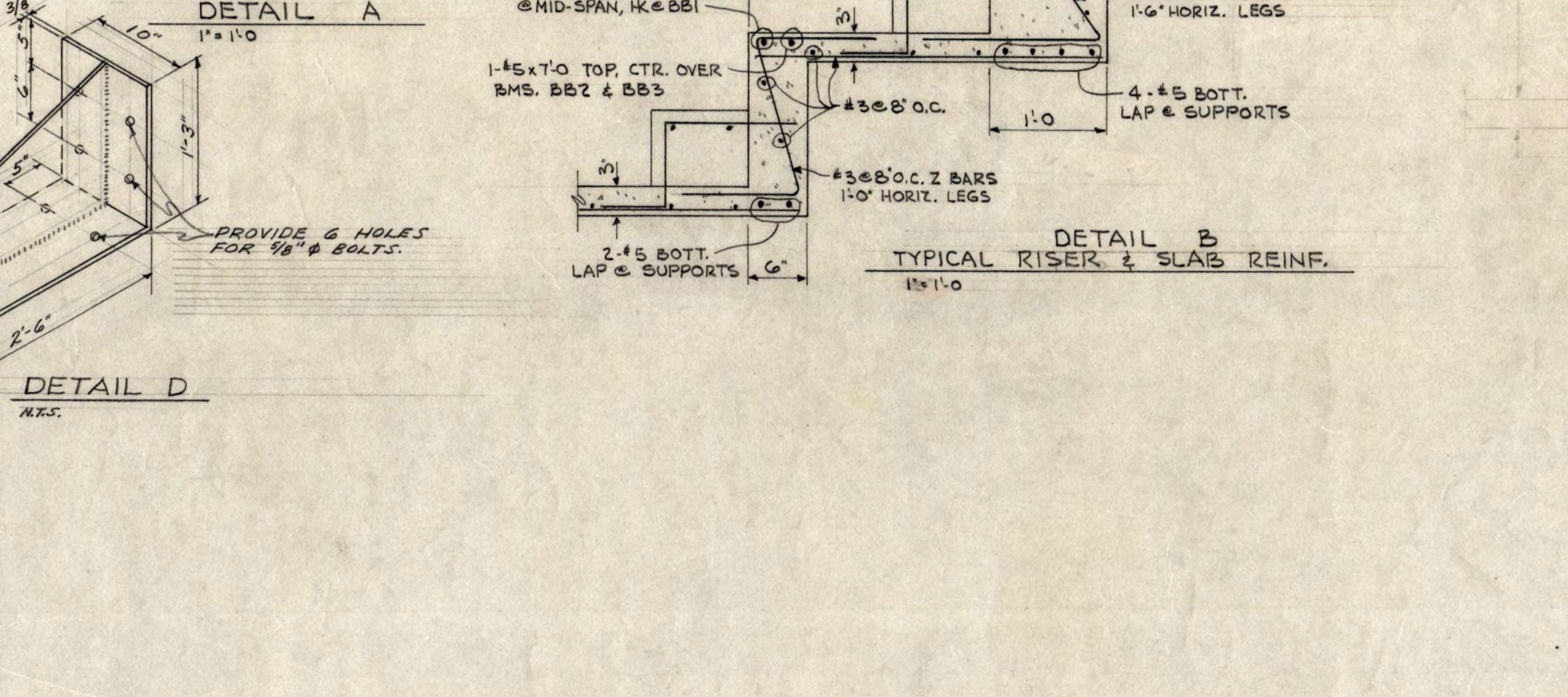
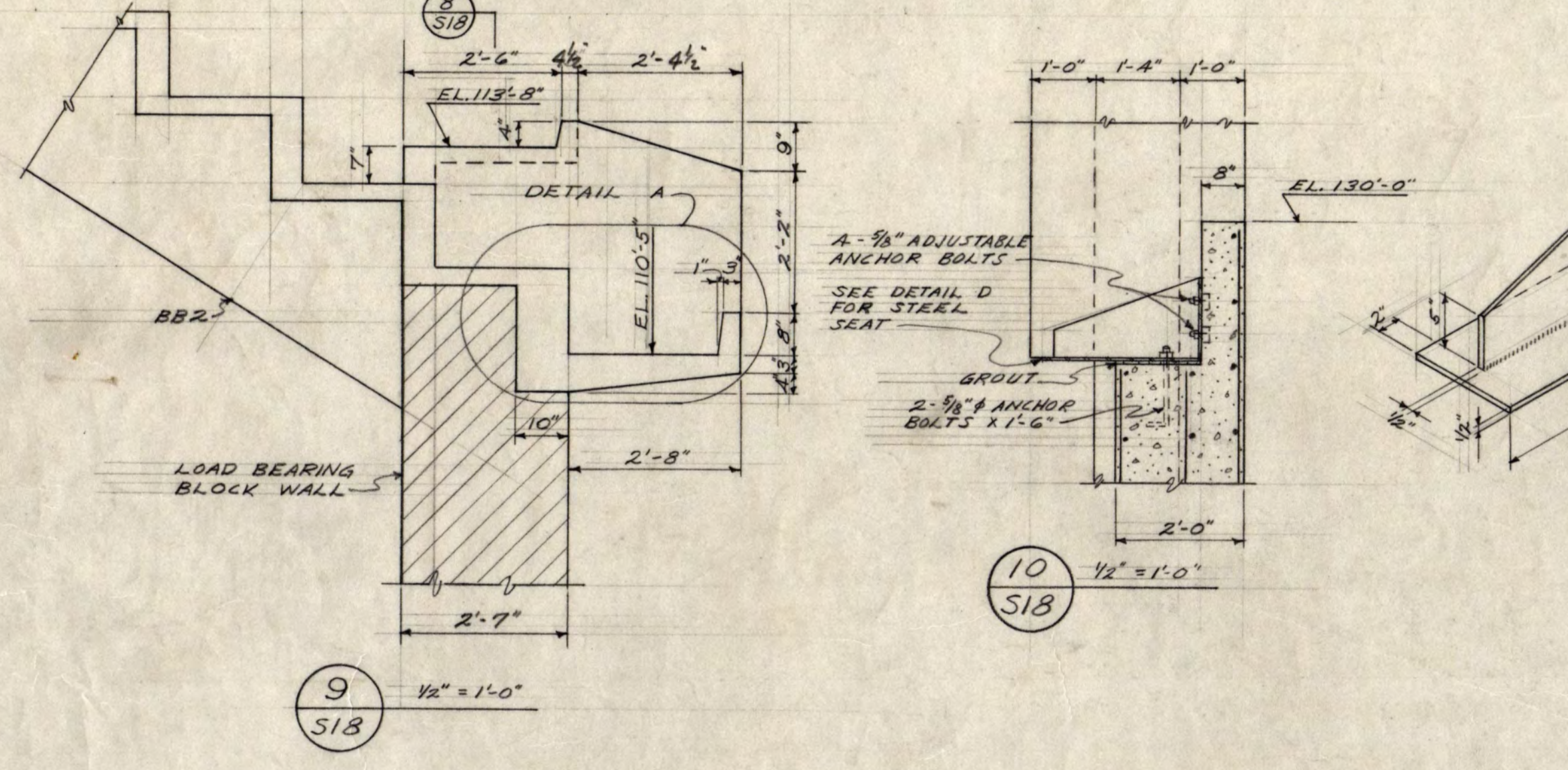
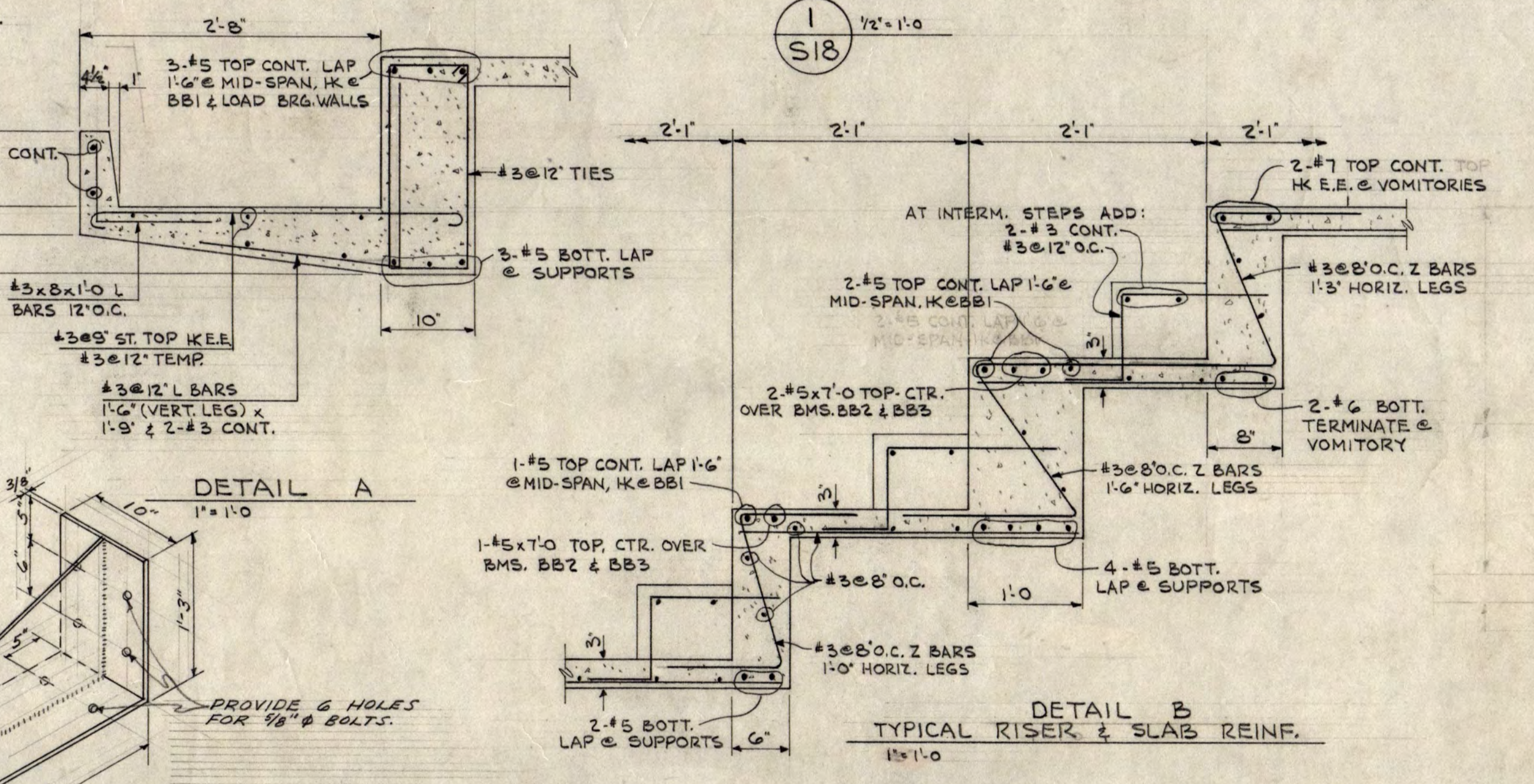
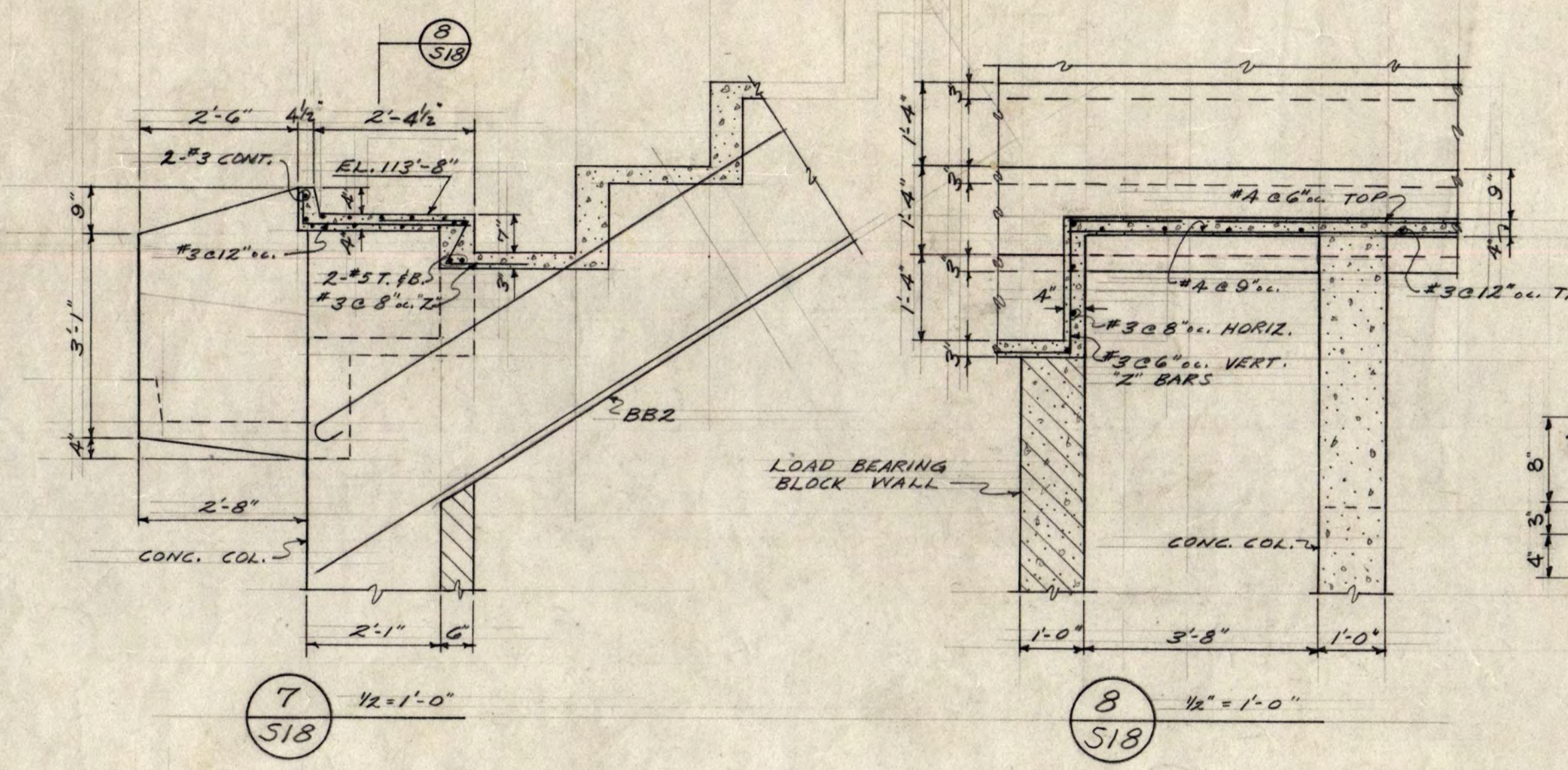
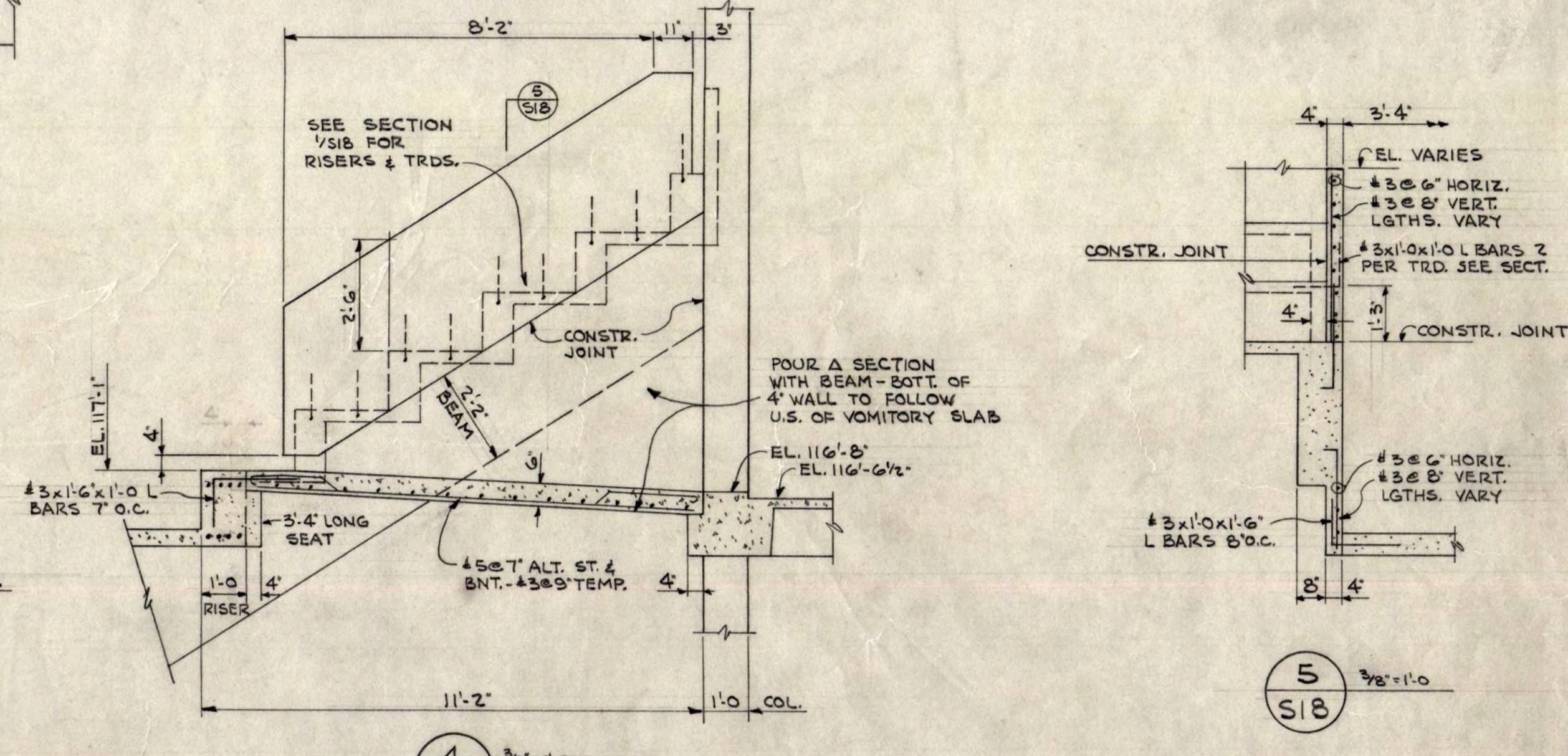
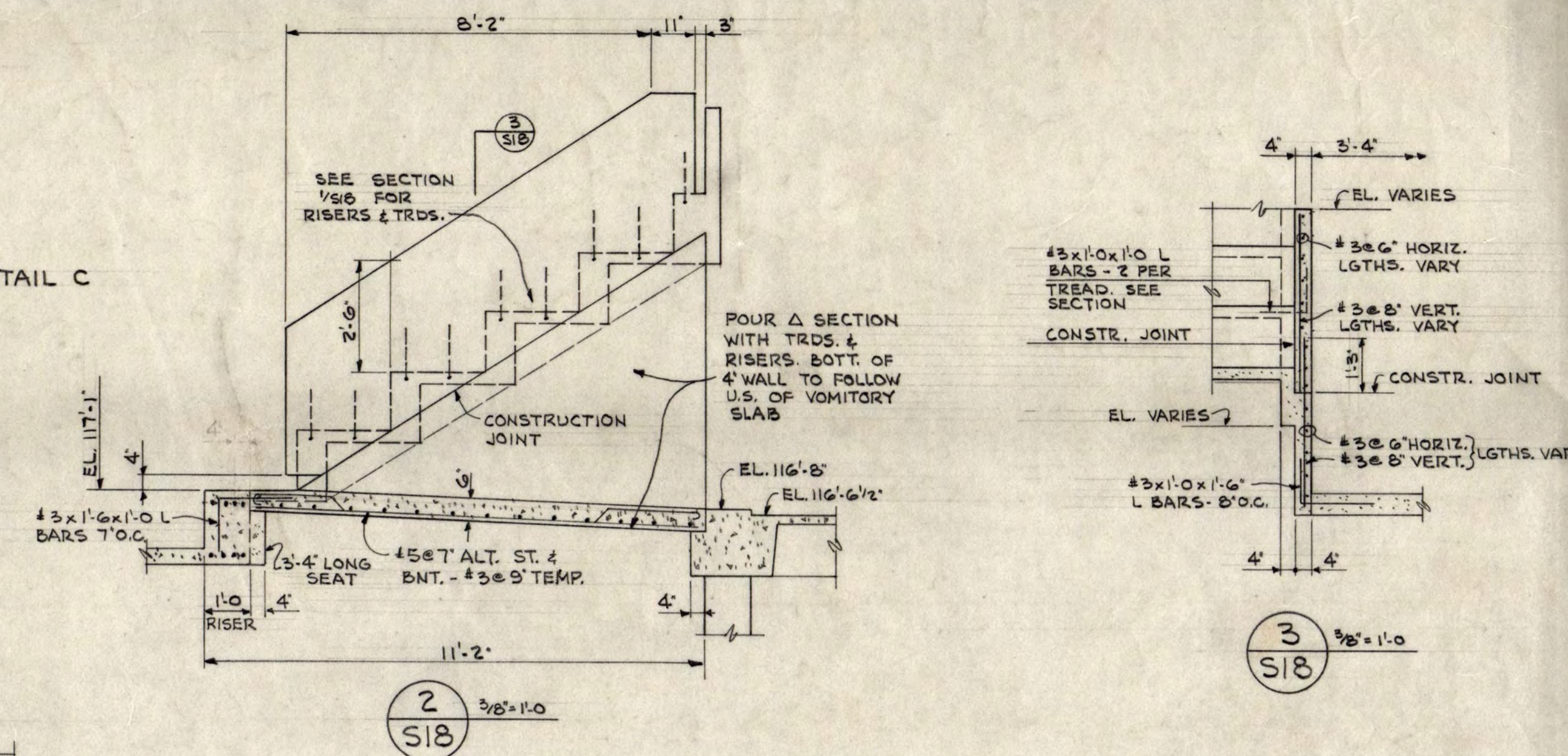
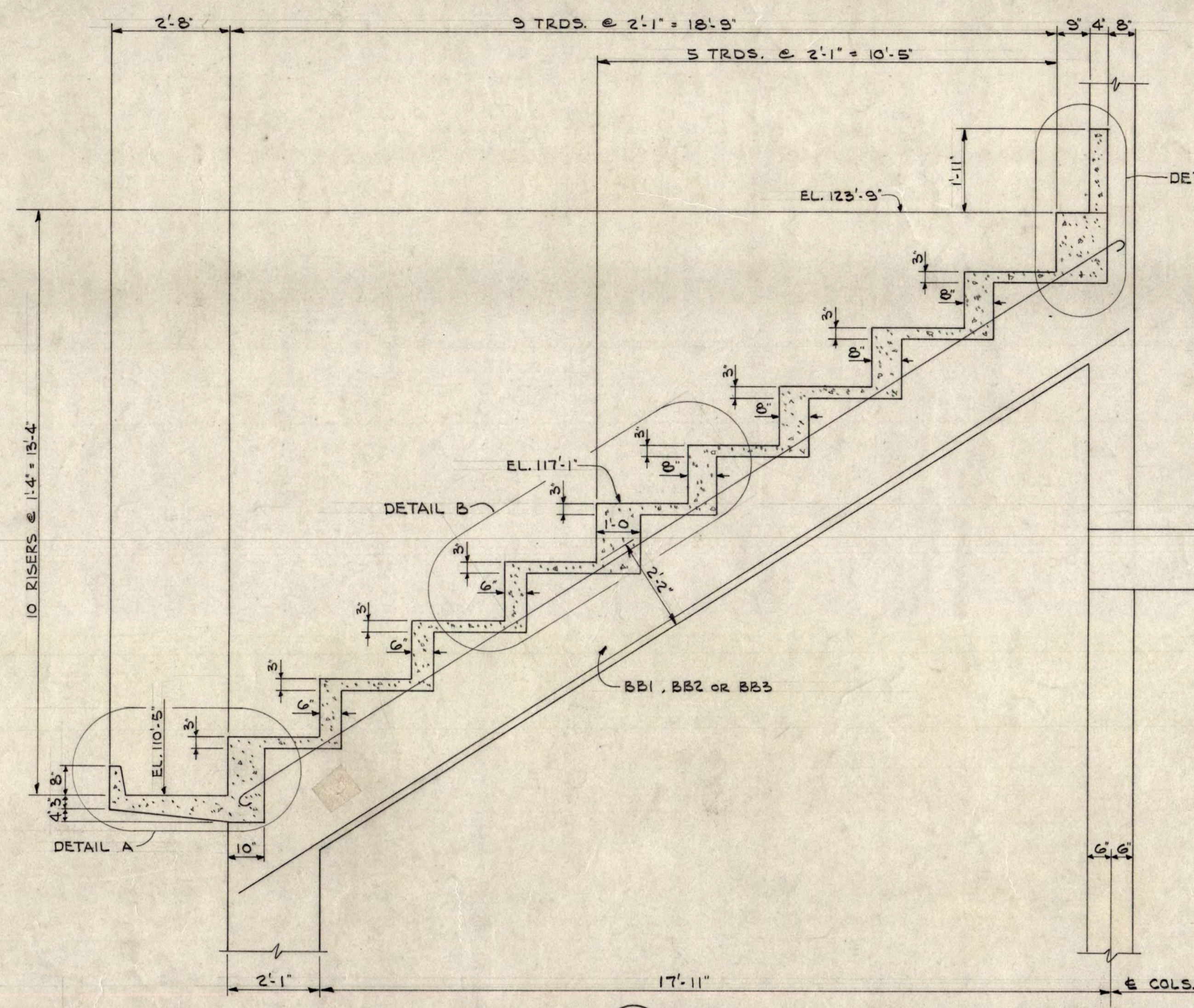
SHEET **517** OF 18

STATE PROJECT NUMBER 3425



BALCONY FRAMING PLAN AT POOL
1/8" = 1'-0"

MARK	B	D	STRAIGHT	BENT	STR. TOP	STAIRS OR TIES NO. OVER EACH END	REMARKS
BB1	12	26	3-#9		3-#8	#3 12" O.C. TIES	HK TOP BARS @ EA. END
BB2	12	26	3-#11		3-#10	#3 28" 3/8" REMAINDER 1' O.C.	DO
BB3	12	26	3-#10		3-#9	#3	DO



52

INSTRUCTIONAL BUILDING FOR PHYSICAL EDUCATION
ST. CLOUD STATE COLLEGE ST. CLOUD, MINNESOTA

DEPARTMENT OF ADMINISTRATION STATE OF MINNESOTA
ROOM 120 STATE CAPITOL BUILDING ST. PAUL, MINNESOTA

A. J. NELSON, STATE ARCHITECT

BALCONY FRAMING PLAN & DETAILS AT POOL

TRAYNOR AND HERMANSON ARCHITECTS ST. CLOUD

STRUCTURAL ENGINEERS: JOHNSTON & SANLAW MINNEAPOLIS, MINN.
CONSULTING ENGINEERS: GAUSMAN & MOORE, INC. ST. PAUL, MINN.

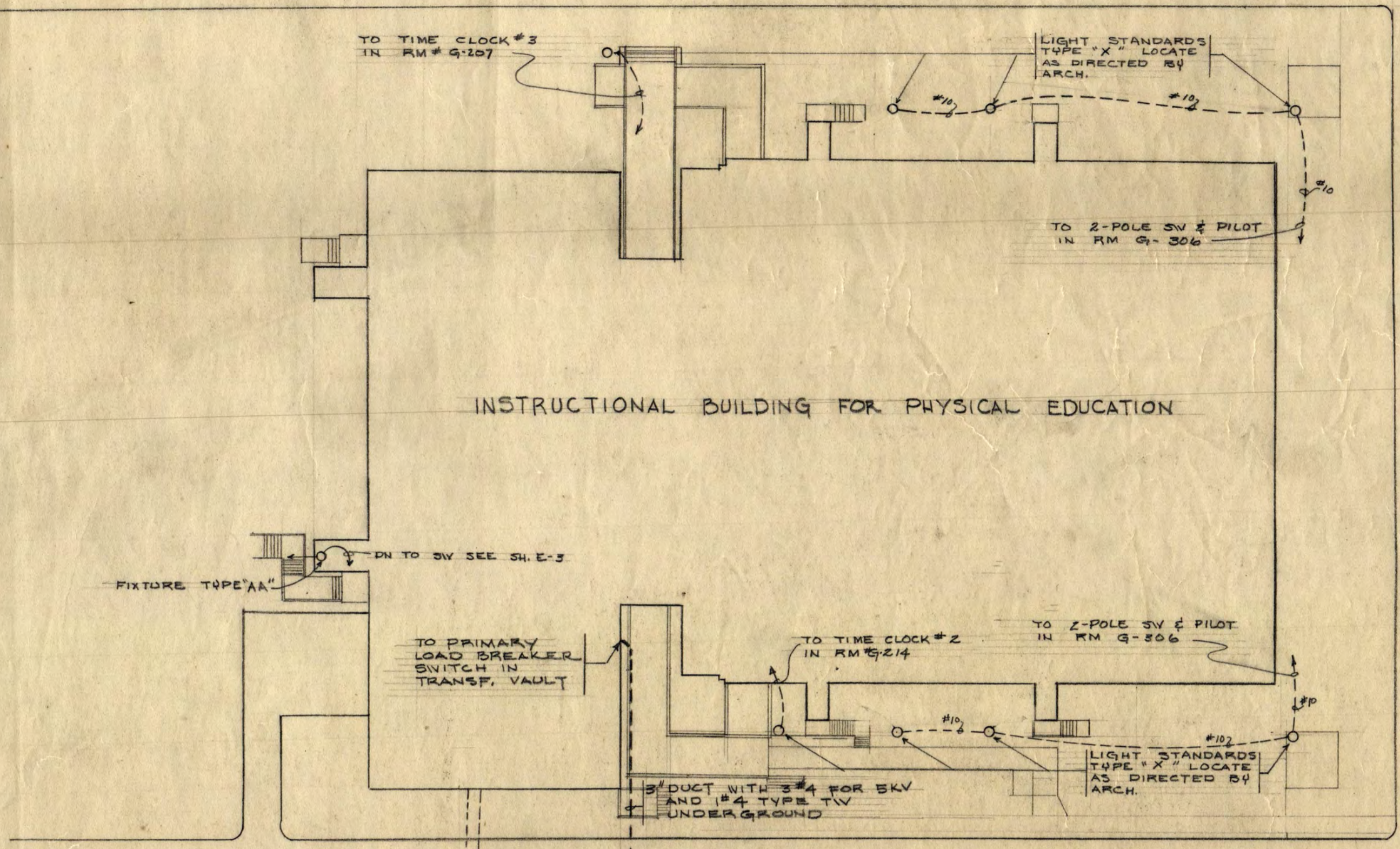
APPROVED BY: PRESIDENT ST. CLOUD STATE COLLEGE
APPROVED BY: STATE COLLEGE BOARD
APPROVED BY: COMMISSIONER OF ADMINISTRATION AN AUTHORIZED SIGNATURE

DATE: 7-17-1963 REVISIONS: AS BUILT

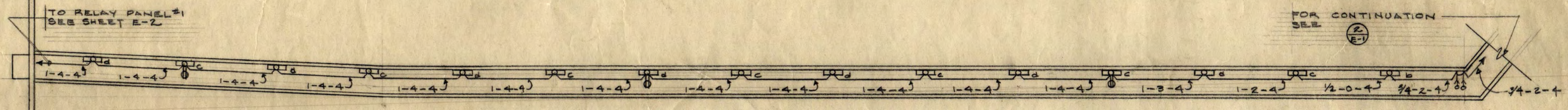
CHECKED: J.W.S.

SHEET
518
OF 18
STATE PROJECT NUMBER
3425

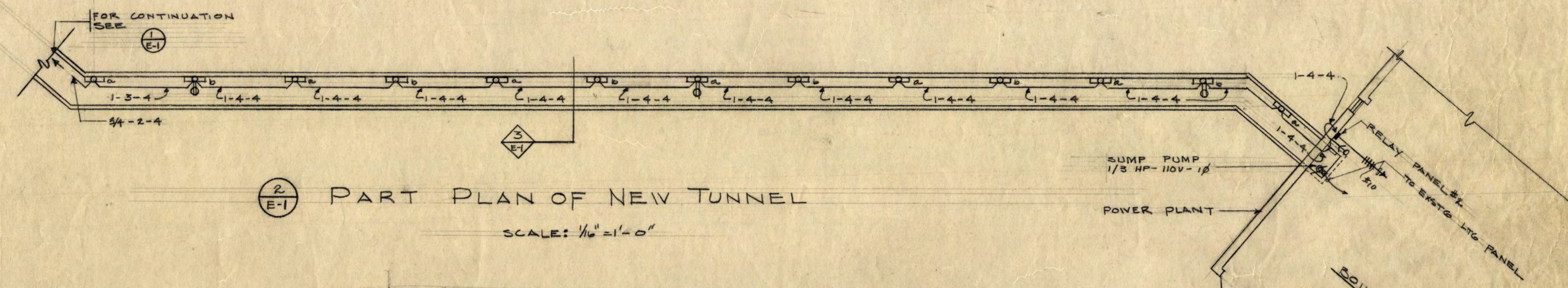
4TH AVENUE SOUTH



PHYSICAL EDUCATION BUILDING

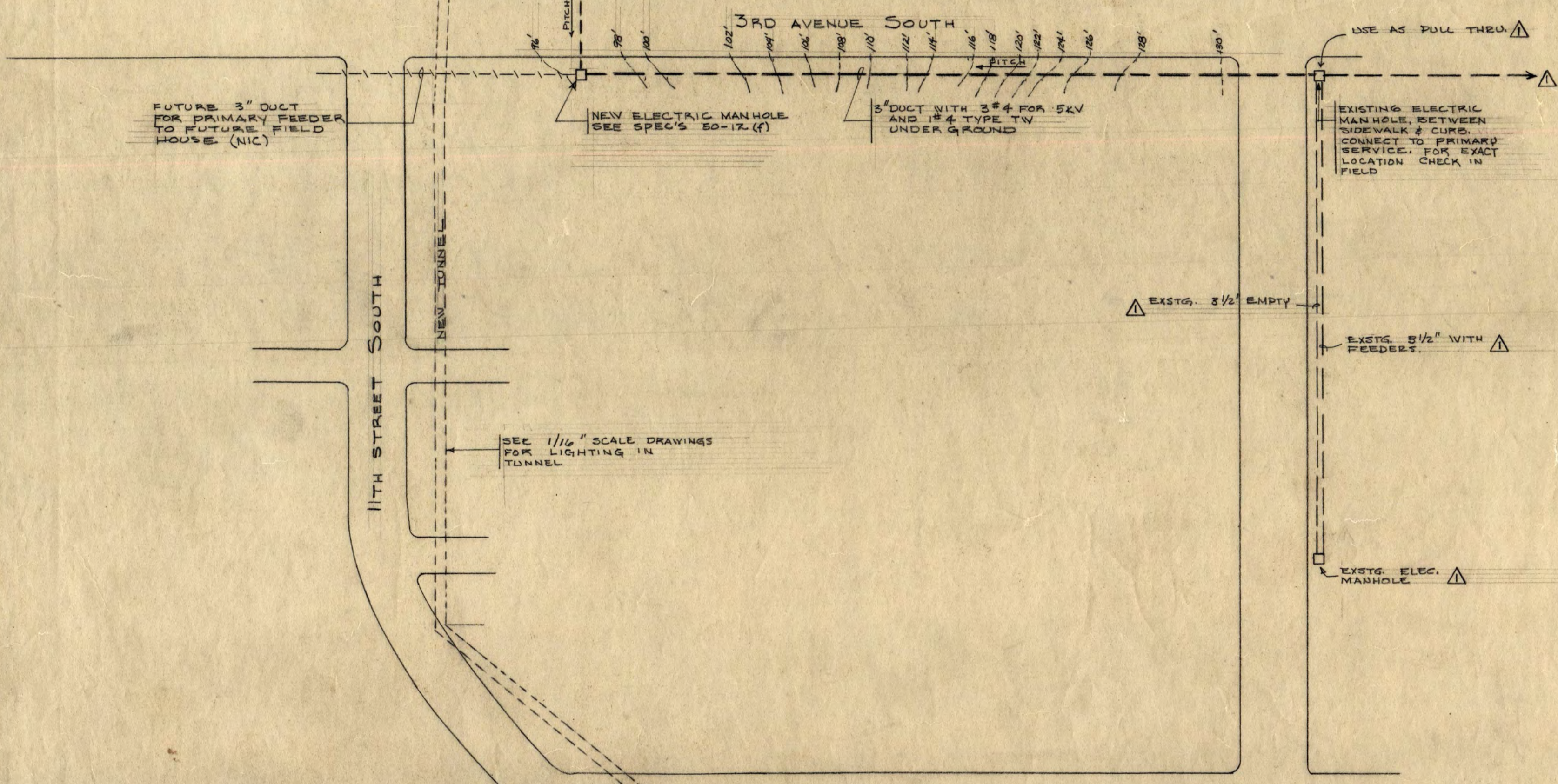


1 PART PLAN OF NEW TUNNEL SCALE: 1/8"=1'-0"

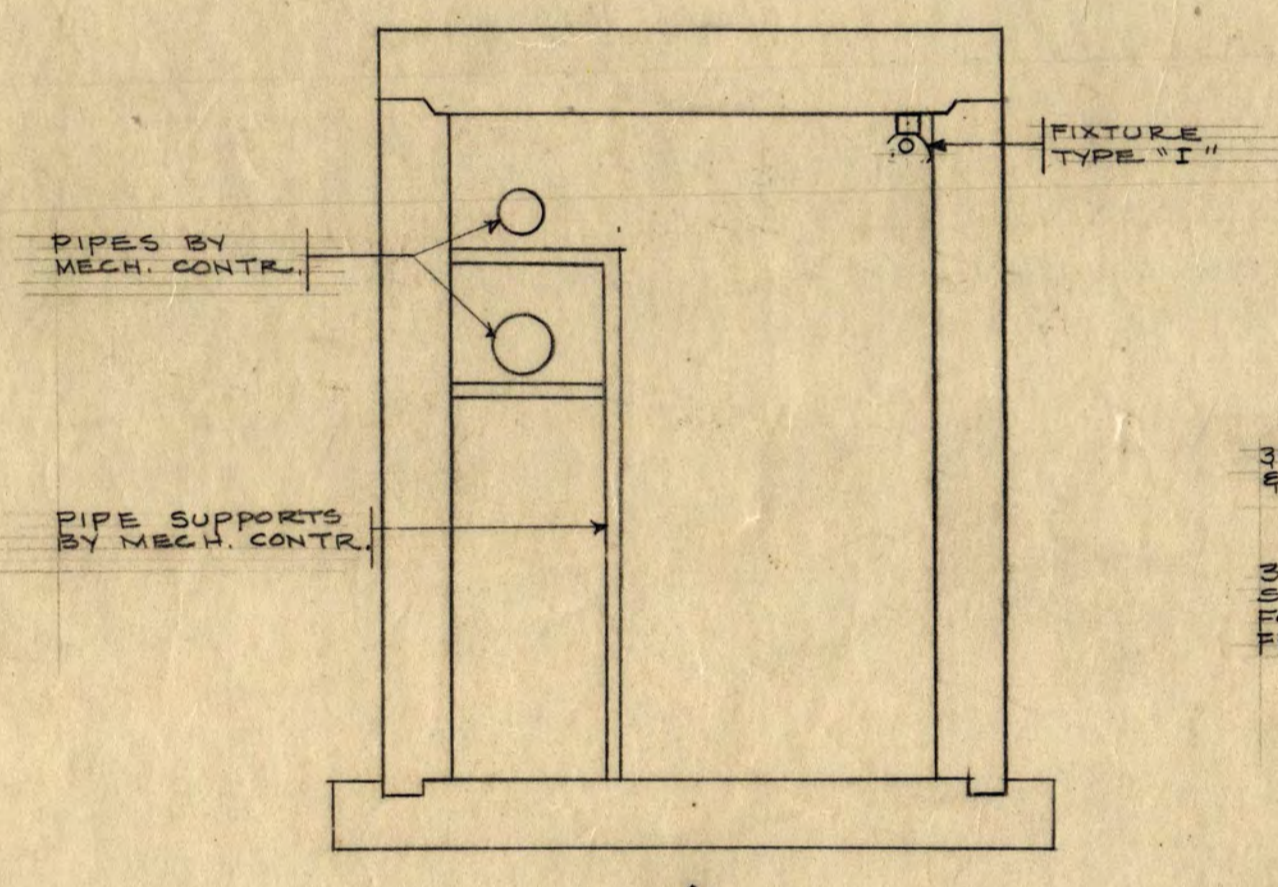


2 PART PLAN OF NEW TUNNEL SCALE: 1/8"=1'-0"

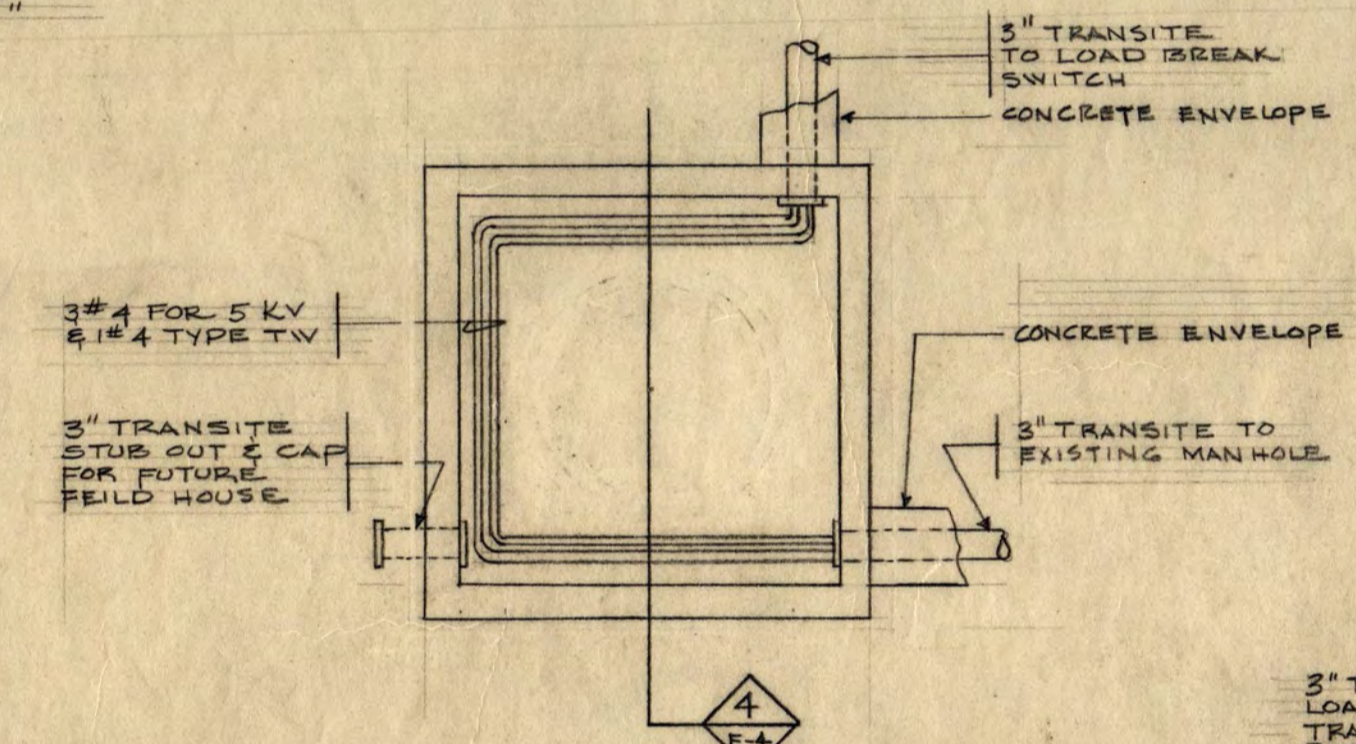
- NOTES:
1. NUMBERS ON CONDUIT RUNS REFERS TO CONDUIT SIZE & WIRE SIZES
1ST DIGIT = CONDUIT SIZE
2ND DIGIT = NUMBER OF #10 WIRES
3RD DIGIT = NUMBER OF #16 WIRES
 2. BRANCH CIRCUIT WIRES FOR LIGHTS & RECEPTACLES SHALL BE #10
 3. WIRING FOR LOW VOLTAGE SWITCHES & PILOT TO BE #16



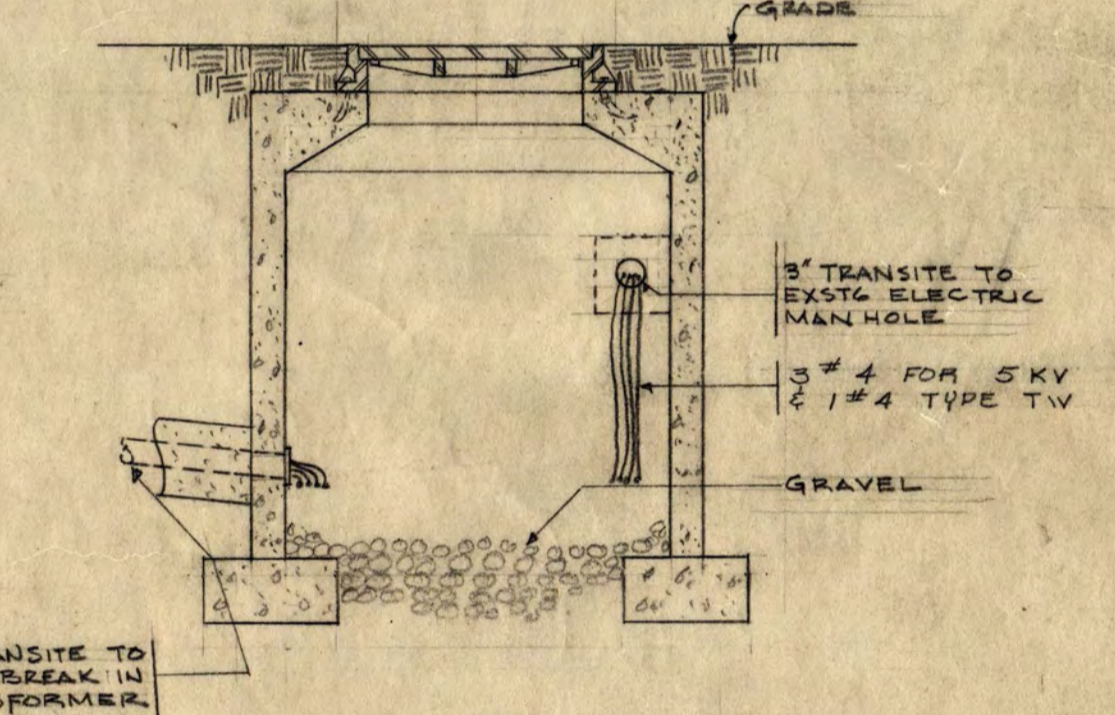
SITE PLAN SCALE: 1"=40'



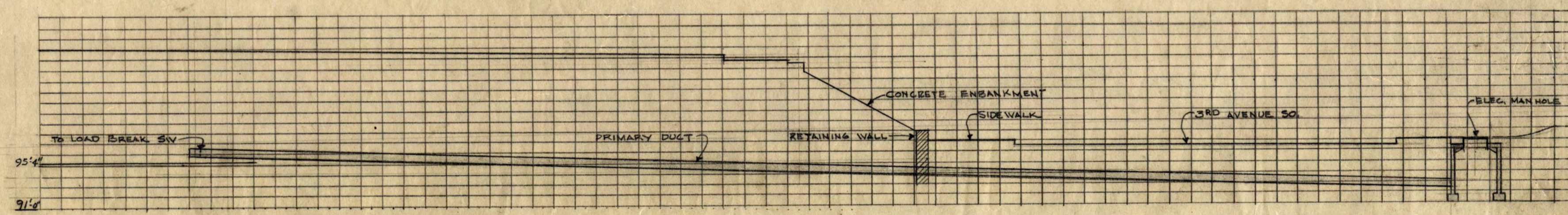
3 SECTION THRU NEW TUNNEL SCALE: 1/8"=1'-0"



4 PLAN OF NEW MANHOLE SCALE: 1/8"=1'-0"



5 SECTION THRU NEW MANHOLE SCALE: 1/8"=1'-0"



PROFILE-DUCT RUN BETWEEN TRANSFORMER VAULT AND NEW MANHOLE SCALE: HORIZONTAL 1/4"=2'-0" VERTICAL 1/8"=1'-0"

POWER PLANT

INSTRUCTIONAL BUILDING FOR PHYSICAL EDUCATION ST. CLOUD STATE COLLEGE ST. CLOUD, MINNESOTA

I hereby certify that this plan, specification, or report was prepared by me or under my direct supervision and that I am a duly Registered Professional Engineer under the laws of the State of Minnesota.

DEPARTMENT OF ADMINISTRATION ROOM 120 STATE CAPITOL BUILDING ARCHITECTURAL AND ENGINEERING DIVISION STATE OF MINNESOTA ST. PAUL, MINNESOTA

A. J. NELSON, STATE ARCHITECT APPROVED BY PRESIDENT BY CLOUD STATE COLLEGE APPROVED BY STATE COLLEGE BOARD APPROVED BY COMMISSIONER OF ADMINISTRATION AN AUTHORIZED SIGNATURE

SITE PLAN AND DETAILS ELECTRICAL DATE JAN -17-68 DRAWN BY [Signature] CHECKED BY [Signature] AS BUILT Nov-2-1965

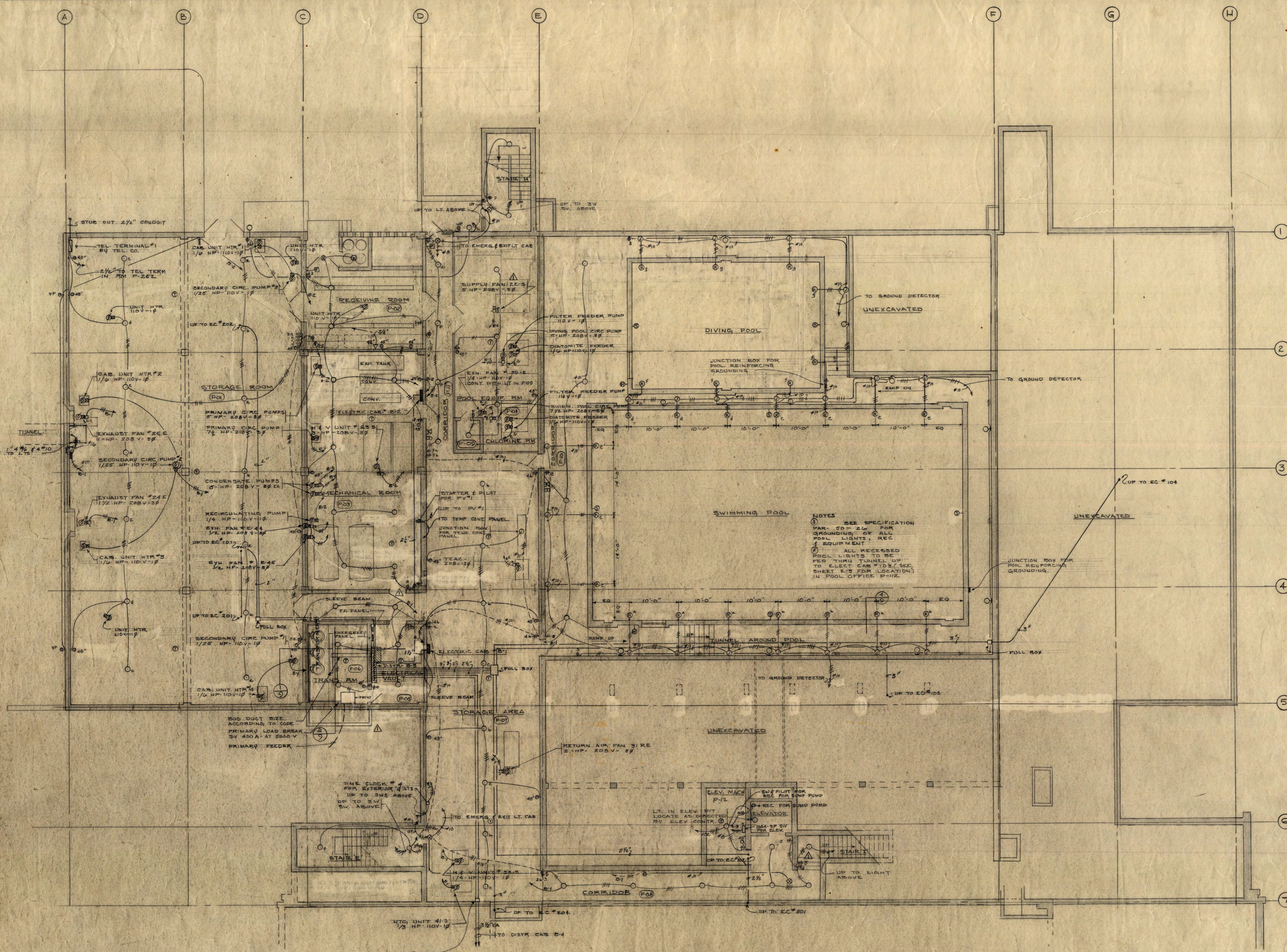
TRAYNOR AND HERMANSON ARCHITECTS ST. CLOUD STRUCTURAL ENGINEERS: JOHNSTON & SAHLMAN MINNEAPOLIS, MINN. CONSULTING ENGINEERS: GAUSMAN & MOORE, INC. ST. PAUL, MINN. STATE PROJECT NUMBER 3425

53

E1

OF 10

3425



BASEMENT ELECTRICAL PLAN
SCALE 1/8" = 1'-0"

NOTE ON ALL DRAWINGS ALL CORRIDOR RECEPTACLES FED TO THE SAME CABINET SHALL BE ON THE SAME CIRCUIT.
FOR ADDITIONAL INFORMATION ON ELECTRIC CAB FEEDERS SEE FEEDER DIAGRAM SH'E-10

54

INSTRUCTIONAL BUILDING FOR PHYSICAL EDUCATION
ST. CLOUD STATE COLLEGE ST. CLOUD, MINNESOTA

DEPARTMENT OF ADMINISTRATION
ROOM 126 STATE CAPITOL BUILDING
ARCHITECTURAL AND ENGINEERING DIVISION

STATE OF MINNESOTA
ST. PAUL, MINNESOTA

A. J. NELSON, STATE ARCHITECT

BASEMENT FLOOR PLAN POOL WING

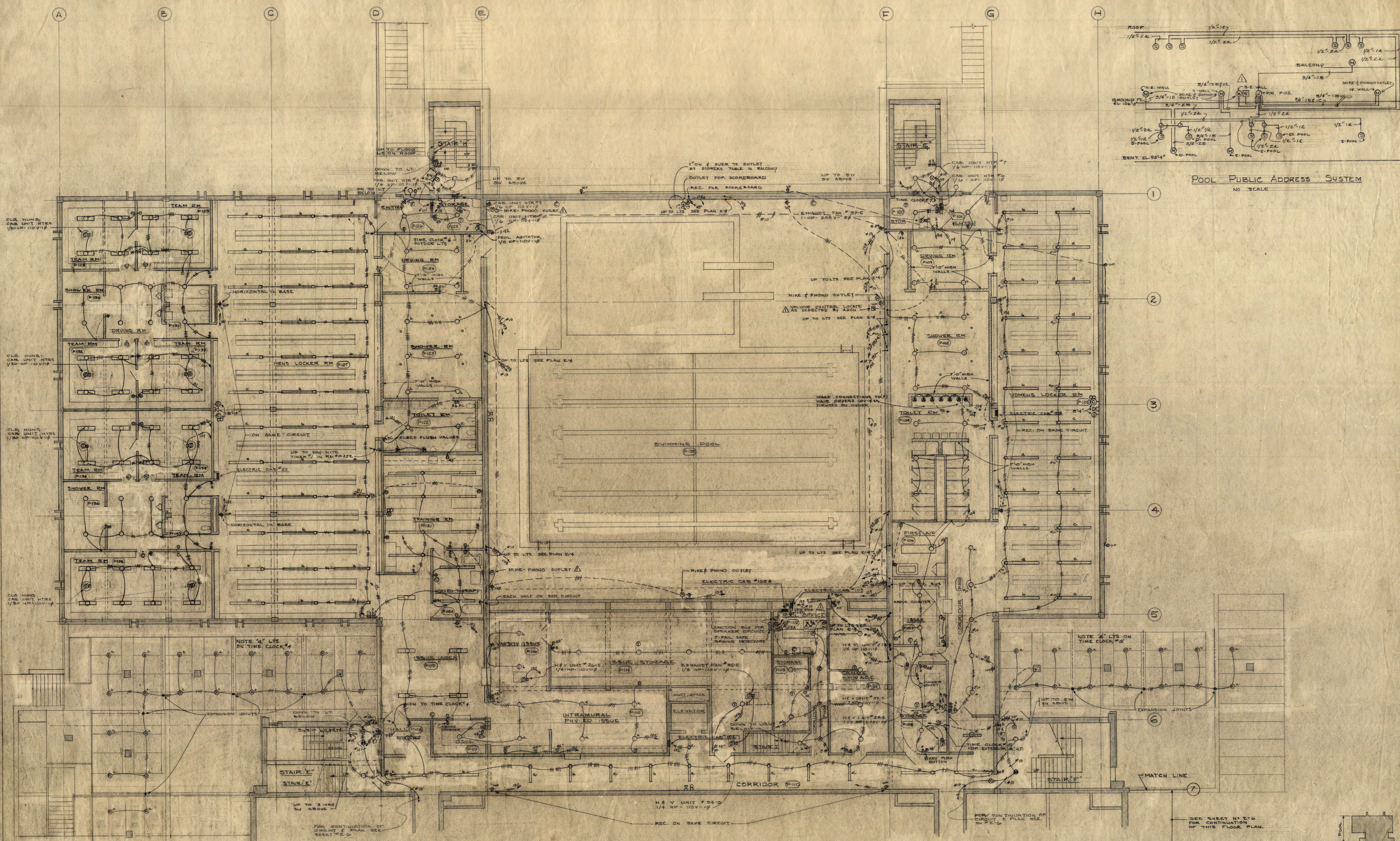
TRAYNOR AND HERMANSON ARCHITECTS ST. CLOUD

STRUCTURAL ENGINEERS: JOHNSTON & SAHLMAN MINNEAPOLIS, MINN.
CONSULTING ENGINEERS: GAUSMAN & MOORE, INC. ST. PAUL, MINN.

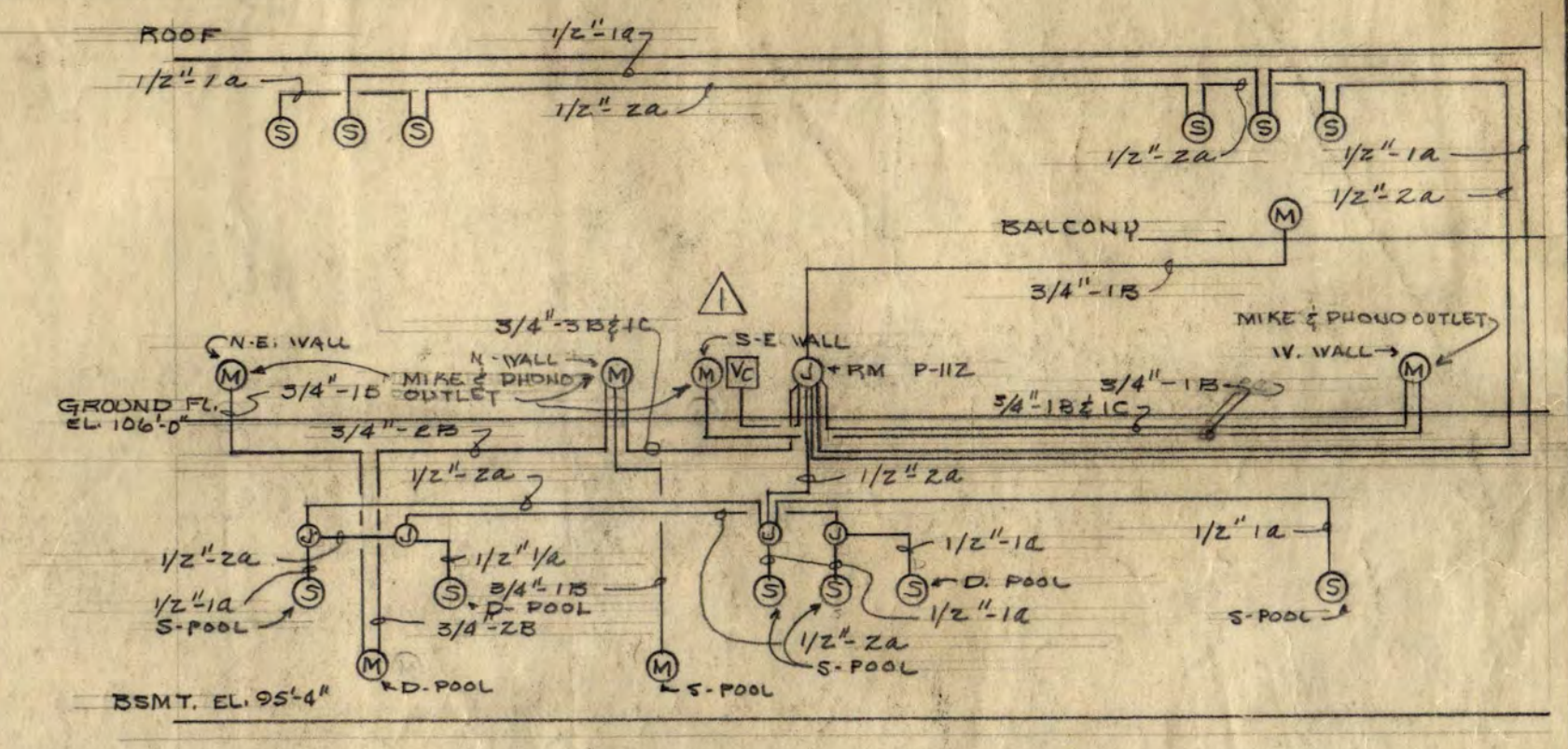
APPROVED BY: PRESIDENT ST. CLOUD STATE COLLEGE
APPROVED BY: STATE COLLEGE BOARD
APPROVED BY: COMMISSIONER OF ADMINISTRATION
AN AUTHORIZED SIGNATURE

DATE: JAN-17-65 REVISIONS
DRAWN: J.M.P. AS BUILT Nov-2-1965
CHECKED: S.L.R.

SHEET **122**
OF 10
STATE PROJECT NUMBER 3425



GROUND FLOOR ELECTRICAL PLAN
SCALE 1/8" = 1'-0"



POOL PUBLIC ADDRESS SYSTEM
NO SCALE

INSTRUCTIONAL BUILDING FOR PHYSICAL EDUCATION
ST. CLOUD STATE COLLEGE ST. CLOUD, MINNESOTA

DEPARTMENT OF ADMINISTRATION STATE OF MINNESOTA
ROOM 120 STATE CAPITOL BUILDING ST. PAUL, MINNESOTA

A. J. NELSON, STATE ARCHITECT APPROVED BY PRESIDENT OF ST. CLOUD STATE COLLEGE

APPROVED BY STATE COLLEGE BOARD

APPROVED BY COMMISSIONER OF ADMINISTRATION
AN AUTHORIZED SIGNATURE

DATE JAN-17-63 REVISIONS AS BUILT
DRAWN BY NOV-5-1965

TRAYNOR AND HERMANSON ARCHITECTS ST. CLOUD

STRUCTURAL ENGINEERS: JOHNSTON & SAHLMAN, MINNEAPOLIS, MINN.
CONSULTING ENGINEERS: GAUSMAN & MOORE, INC., ST. PAUL, MINN.

GROUND FLOOR PLAN POOL WING

STATE PROJECT NUMBER 3425