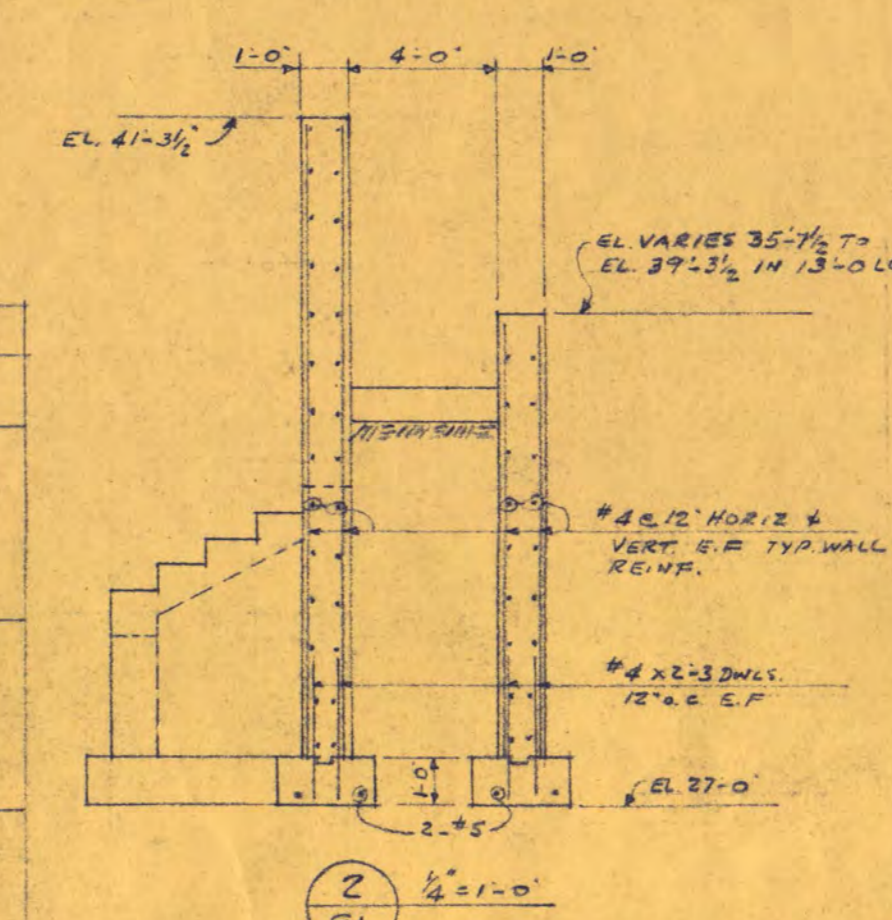
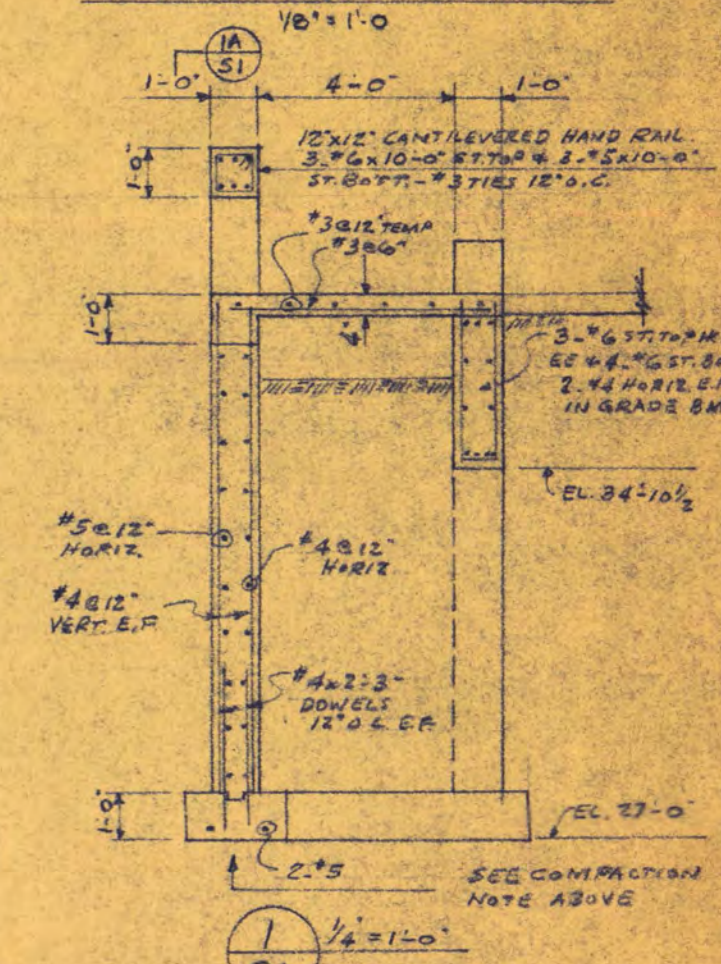
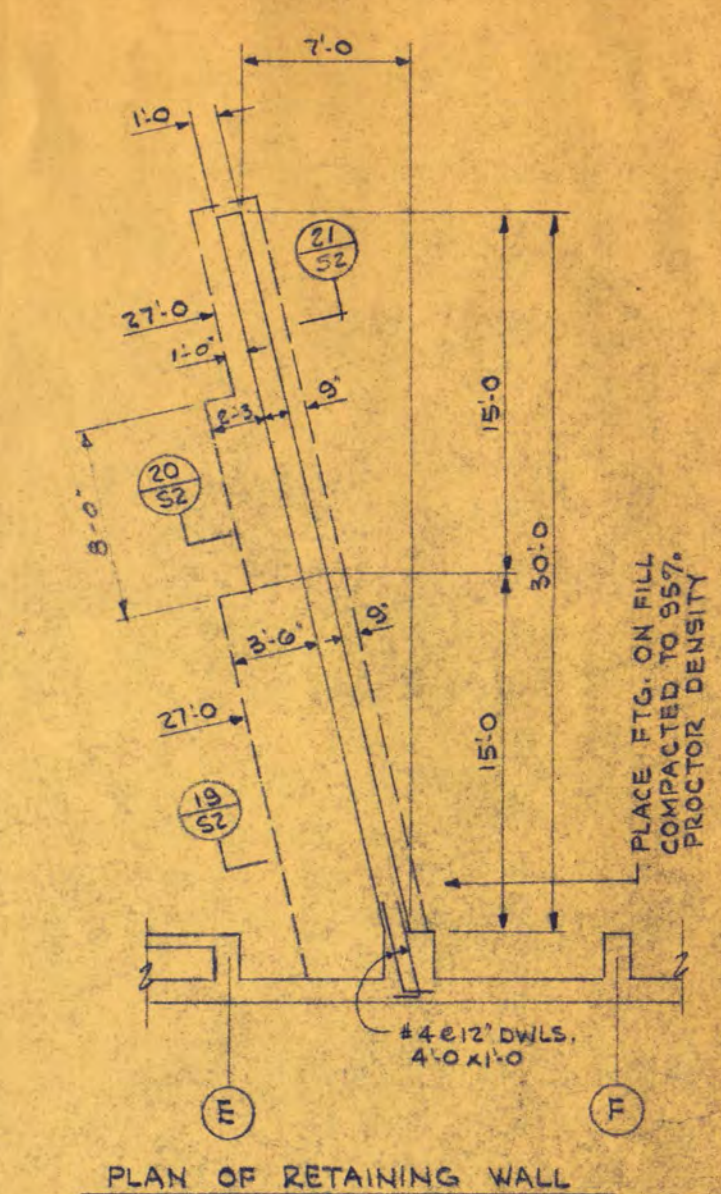


**FOOTING AND FOUNDATION PLAN**

ELEVATIONS SHOWN ON PLAN ARE TO BOTTOM OF FOOTINGS, UNLESS NOTED OTHERWISE

**CONCRETE COLUMN AND FOOTING SCHEDULE**

COL. MARK	1, 8, 30, 37	2, 9, 58	3, 10, 11, 59, 60	4, 12, 61	5, 13, 14, 44, 45	15	16, 17, 48	18, 49	19	20, 21	22, 24, 25	26	27, 40	28	29, 42	30, 43	31	32	33, 34	35, 36, 37, 38	39	41	46	47	51 thru 56
ROOF	12x12	12x12	12x12	12x12	12x12	12x12	12x12	12x12	12x12	12x12	12x12	12x12	12x12	12x12	12x12	12x12	12x12	12x12	12x12	12x12	12x12	12x12	12x12	12x12	12x12
SIZE	4'x6	4'x6	4'x6	4'x6	4'x6	4'x6	4'x6	4'x6	4'x6	4'x6	4'x6	4'x6	4'x6	4'x6	4'x6	4'x6	4'x6	4'x6	4'x6	4'x6	4'x6	4'x6	4'x6	4'x6	
VERTICAL TIES	#3@12	#3@12	#3@12	#3@12	#3@12	#3@12	#3@12	#3@12	#3@12	#3@12	#3@12	#3@12	#3@12	#3@12	#3@12	#3@12	#3@12	#3@12	#3@12	#3@12	#3@12	#3@12	#3@12	#3@12	
5th FL.	12x12	12x12	12x12	12x12	12x12	12x12	12x12	12x12	12x12	12x12	12x12	12x12	12x12	12x12	12x12	12x12	12x12	12x12	12x12	12x12	12x12	12x12	12x12	12x12	12x12
SIZE	4'x6	4'x7	4'x6	4'x6	4'x6	4'x6	4'x7	4'x6	4'x7	4'x6	4'x7	4'x6	4'x7	4'x6	4'x6	4'x6	4'x6	4'x6	4'x6	4'x6	4'x6	4'x6	4'x6	4'x6	4'x6
VERTICAL TIES	#3@12	#3@12	#3@12	#3@12	#3@12	#3@12	#3@12	#3@12	#3@12	#3@12	#3@12	#3@12	#3@12	#3@12	#3@12	#3@12	#3@12	#3@12	#3@12	#3@12	#3@12	#3@12	#3@12	#3@12	#3@12
2nd FL.	12x12	12x12	12x12	12x12	12x12	12x12	12x12	12x12	12x12	12x12	12x12	12x12	12x12	12x12	12x12	12x12	12x12	12x12	12x12	12x12	12x12	12x12	12x12	12x12	12x12
SIZE	4'x7	4'x9	4'x6	4'x7	4'x6	4'x6	4'x7	4'x6	4'x7	4'x6	4'x7	4'x6	4'x7	4'x6	4'x6	4'x6	4'x6	4'x6	4'x6	4'x6	4'x6	4'x6	4'x6	4'x6	4'x6
VERTICAL TIES	#3@12	#3@12	#3@12	#3@12	#3@12	#3@12	#3@12	#3@12	#3@12	#3@12	#3@12	#3@12	#3@12	#3@12	#3@12	#3@12	#3@12	#3@12	#3@12	#3@12	#3@12	#3@12	#3@12	#3@12	#3@12
1st FL.	12x12	12x12	12x12	12x12	12x12	12x12	12x12	12x12	12x12	12x12	12x12	12x12	12x12	12x12	12x12	12x12	12x12	12x12	12x12	12x12	12x12	12x12	12x12	12x12	12x12
SIZE	4'x7	4'x9	4'x6	4'x7	4'x6	4'x6	4'x7	4'x6	4'x7	4'x6	4'x7	4'x6	4'x7	4'x6	4'x6	4'x6	4'x6	4'x6	4'x6	4'x6	4'x6	4'x6	4'x6	4'x6	4'x6
VERTICAL TIES	#3@12	#3@12	#3@12	#3@12	#3@12	#3@12	#3@12	#3@12	#3@12	#3@12	#3@12	#3@12	#3@12	#3@12	#3@12	#3@12	#3@12	#3@12	#3@12	#3@12	#3@12	#3@12	#3@12	#3@12	#3@12
DOWELS	4'x7	4'x9	4'x6	4'x7	4'x6	4'x6	4'x7	4'x6	4'x7	4'x6	4'x7	4'x6	4'x7	4'x6	4'x6	4'x6	4'x6	4'x6	4'x6	4'x6	4'x6	4'x6	4'x6	4'x6	4'x6
FOOTING	8'x10'x10'	8'x10'x10'	8'x10'x10'	8'x10'x10'	8'x10'x10'	8'x10'x10'	8'x10'x10'	8'x10'x10'	8'x10'x10'	8'x10'x10'	8'x10'x10'	8'x10'x10'	8'x10'x10'	8'x10'x10'	8'x10'x10'	8'x10'x10'	8'x10'x10'	8'x10'x10'	8'x10'x10'	8'x10'x10'	8'x10'x10'	8'x10'x10'	8'x10'x10'	8'x10'x10'	
REIN. EA. WAY	7'x7.5'x6	7'x7.5'x6	7'x7.5'x6	7'x7.5'x6	7'x7.5'x6	7'x7.5'x6	7'x7.5'x6	7'x7.5'x6	7'x7.5'x6	7'x7.5'x6	7'x7.5'x6	7'x7.5'x6	7'x7.5'x6	7'x7.5'x6	7'x7.5'x6	7'x7.5'x6	7'x7.5'x6	7'x7.5'x6	7'x7.5'x6	7'x7.5'x6	7'x7.5'x6	7'x7.5'x6	7'x7.5'x6	7'x7.5'x6	



**CLASSROOM BUILDING**  
**FOR ST. CLOUD STATE COLLEGE**  
 DEPARTMENT OF ADMINISTRATION STATE OF MINNESOTA  
 STATE CAPITOL BUILDING ST. PAUL, MINNESOTA  
 ARCHITECTURAL AND ENGINEERING DIVISION

FEDERAL PROJECT MINN. 4-2983

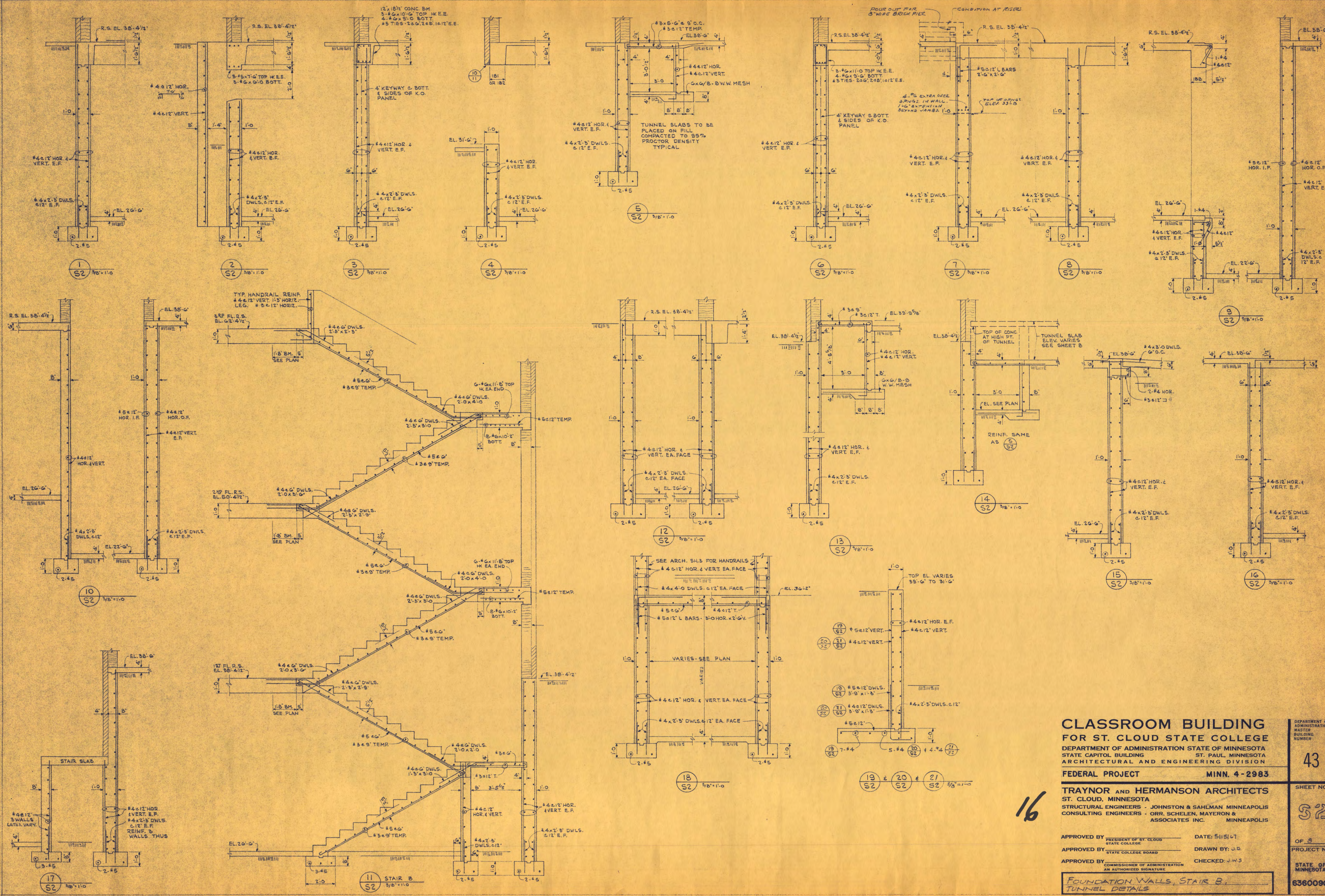
**TRAYNOR AND HERMANSON ARCHITECTS**  
 ST. CLOUD, MINNESOTA  
 STRUCTURAL ENGINEERS - JOHNSTON & SAHLMAN MINNEAPOLIS  
 CONSULTING ENGINEERS - ORR, SCHELEN, MAYERSON & ASSOCIATES INC. MINNEAPOLIS

APPROVED BY: [Signature] PRESIDENT OF ST. CLOUD STATE COLLEGE DATE: 5/15/47  
 APPROVED BY: [Signature] STATE COLLEGE BOARD DRAWN BY: J.D.J.S.  
 APPROVED BY: [Signature] COMMISSIONER OF ADMINISTRATION AN AUTHORIZED SIGNATURE CHECKED: J.W.S.

Footings and Foundation Plan

STATE OF MINNESOTA 636090

I HEREBY CERTIFY THAT THIS DRAWING WAS PREPARED BY ME OR UNDER MY DIRECT SUPERVISION AND THAT I AM A DULY REGISTERED ENGINEER UNDER THE LAWS OF THE STATE OF MINNESOTA REG. NO. 3109



**CLASSROOM BUILDING**  
**FOR ST. CLOUD STATE COLLEGE**  
 DEPARTMENT OF ADMINISTRATION STATE OF MINNESOTA  
 STATE CAPITOL BUILDING ST. PAUL, MINNESOTA  
 ARCHITECTURAL AND ENGINEERING DIVISION  
 FEDERAL PROJECT MINN. 4-2983

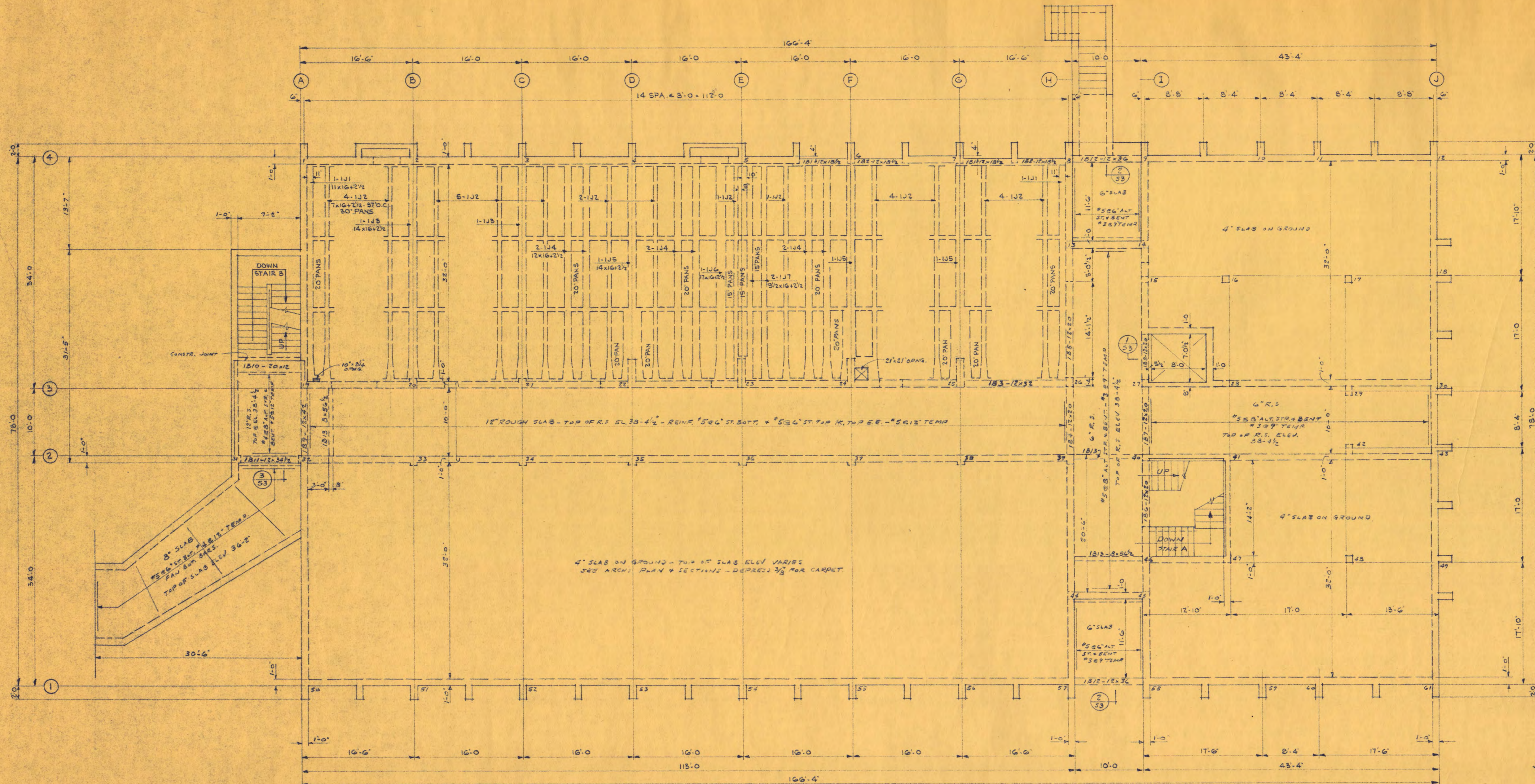
**TRAYNOR AND HERMANSON ARCHITECTS**  
 ST. CLOUD, MINNESOTA  
 STRUCTURAL ENGINEERS - JOHNSTON & SAHLMAN MINNEAPOLIS  
 CONSULTING ENGINEERS - ORR, SCHELEN, MAYERSON & ASSOCIATES INC. MINNEAPOLIS

APPROVED BY: \_\_\_\_\_ DATE: 5/11/47  
 APPROVED BY: \_\_\_\_\_ DRAWN BY: J.D.  
 APPROVED BY: \_\_\_\_\_ CHECKED: J.W.S.  
 COMMISSIONER OF ADMINISTRATION AN AUTHORIZED SIGNATURE

FOUNDATION WALLS, STAIR B,  
 TUNNEL DETAILS

DEPARTMENT OF ADMINISTRATION  
 MASTER BUILDING NUMBER  
**43**  
 SHEET NO.  
**S2**  
 OF 3  
 PROJECT NO.  
 STATE OF MINNESOTA  
**6360090**

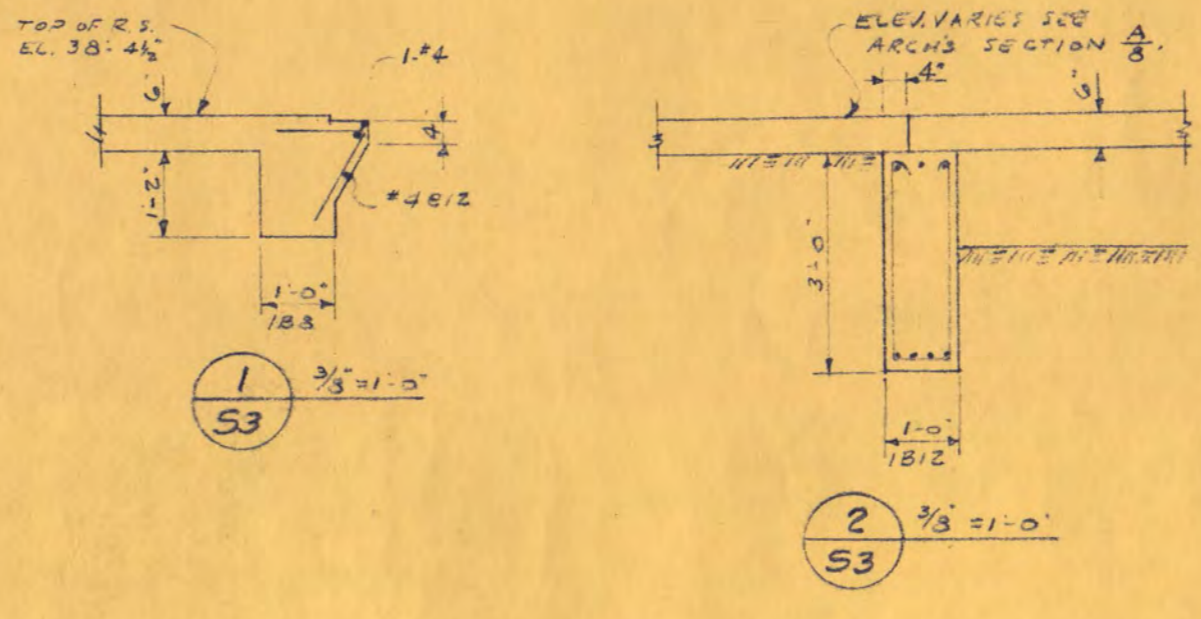
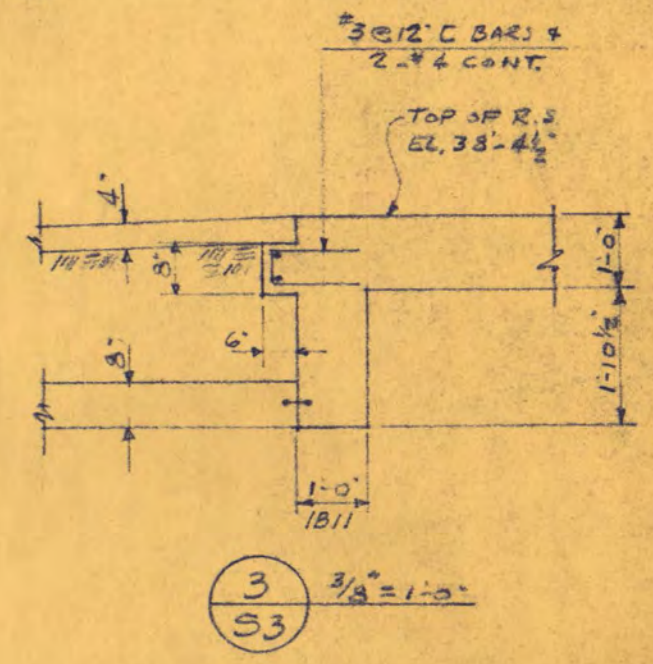
16



2	3
2" x 21'-6" STUBS	10'-0" 131
1" x 10'-22'-0" STUBS	10'-0" 132
2" x 10'-22'-0" STUBS	10'-0" 133
2" x 9'-22'-0" STUBS	10'-0" 134
4" x 9'-22'-0" STUBS	11'-6" 135
2" x 10'-22'-0" STUBS	10'-0" 136
1" x 10'-22'-0" STUBS	10'-0" 137

ADDED TOP BARS REQUIRED AT JOISTS OVER CORRIDOR

TOP OF R.S. ELEV 38'-4 1/2"  
FIRST FLOOR FRAMING PLAN  
1/8" = 1'-0"



- STRUCTURAL NOTES**
- ALL SHOP CONN. WELDED. ALL FIELD CONN. BOLTED--3/4" & MACHINE BOLTS UNLESS OTHERWISE NOTED.
  - STRUCT. DWGS. TO BE MADE IN ACCORDANCE WITH A.I.S.C. MANUALS. SHOW WELD SIZES USING W.M.S. SYMBOLS.
  - STRUCT. FABR. TO FURNISH ALL LOOSE LINTELS; BEAM BEARING PLATES, TIE DOWN ANCHORS OR PLATES FOR JOISTS; ANGLE FRAMES AROUND OPENINGS UNLESS OTHERWISE NOTED.
  - FIELD WELD STD. JOISTS TO SUPPORTING STEEL WITH A MIN. OF 2" x 1/4" FILLET WELD EACH SIDE OF BEARING PLATE & LONG SPAN JOISTS WITH A MIN. OF 3" x 1/4" FILLET WELD.
  - PROVIDE JOIST ANCHORS AT EACH JOIST POCKETING INTO MASONRY WALLS UNLESS OTHERWISE NOTED.
  - SEE ARCH. DWGS. FOR CEILING EXTENSIONS REQD.
  - DO NOT CAMBER JOISTS ADJACENT TO END WALLS OR EXPANSION JOINTS.
  - INSTALL BRIDGING IN ACCORDANCE WITH S.J.I. SPECS. PROVIDE POSITIVE WALL ANCHORS BETWEEN FIRST JOIST & PARALLEL WALL.
  - SEE ARCH. DETAILS FOR HOLES REQD. FOR WOOD BUCKS AND NAILERS.
  - PROVIDE A MIN. OF 8" BEARING FOR ALL MF AND L.B. LINTELS AND 6" FOR ANGLES UNLESS OTHERWISE NOTED.
  - FIELD WELD DECK ON SIDES AND ENDS TO EACH SUPPORT AS SHEETS ARE LAID IN ACCORDANCE WITH MFGS. DIRECTIONS.
  - PROVIDE 20 GAUGE x 6" WIDE COVER PLATES AT CHANGE IN DIRECTION OF DECK.
  - SEE ARCH. DETAILS FOR OTHER LOOSE LINTELS NOT CALLED FOR ON STRUCT. DWGS.
  - STRUCT. STEEL TO CONFORM TO A.S.T.M. SPECIFICATION A 36 UNLESS OTHERWISE NOTED.
  - COLUMN TOP PLATES TO BE 3/8" MIN. THICKNESS.

- ALL CONC. TO BE 3750 LBS. PER SQ. IN. COMPRESSION IN 28 DAYS UNLESS OTHERWISE NOTED.
- ALL REINF. TO BE DETAILED AND PLACED ACCORDING TO THE LATEST A.C.I. CODE AND MANUAL OF STANDARD PRACTICE.
- REINFORCING BARS TO BE INTERMEDIATE GRADE, DEFORMED, NEW BILLET STEEL, MEETING LATEST A.S.T.M. DESIGNATION A15 AND A305 UNLESS OTHERWISE NOTED.
- PROVIDE REQD. SPACERS AND SUPPORTS FOR ALL REINF. INCLUDING TEMP. BARS. REINF. TO BE SECURELY TIED IN PLACE BEFORE POURING CONCRETE.
- PROVIDE 40 DIA. (EACH LEG) CORNER BARS AT ALL CORNERS, WALL INTERSECTIONS, CONC. CAPS, AND LINTEL BLOCKS, SAME SIZE AND SPACING AS HORIZ. REINF.
- PROVIDE 2-#5 EXTRA 4 SIDES OF OPENINGS IN WALLS AND SLABS, WITH 2'0" EXTENSION BEYOND EDGES OF OPNG. UNLESS OTHERWISE NOTED.
- LAP ALL SPLICES 24" BAR DIA. BUT NOT LESS THAN 12" UNLESS OTHERWISE NOTED.
- HOOK ALL SLAB, BEAM & JOIST TOP & BENT BARS AT DISCONTINUOUS END. EXTEND BENT BARS OF SLABS, JOISTS AND BEAMS > GREATER "L" INTO ADJACENT SPANS.
- STIRRUPS TO HAVE 2-#3 SPACERS FOR LENGTH OF STIRRUP SPACING.
- EXTEND BOTT. BARS A MINIMUM OF 6" INTO SUPPORT OF HOOK.
- PROVIDE SHOP OFFSET BENDS IN ALL COLUMN VERT. REINF. AT SPLICES ACCORDING TO A.C.I. CODE.
- PROVIDE 6" x 6" WELDED WIRE MESH FOR SLABS ON GRADE.
- CONCRETE COVER FOR REINFORCING TO BE AS PER LATEST A.C.I. CODE.
- PROVIDE 1-#5 T. & B. CONT. IN BRG. JOISTS--LAP 2'0" AT SPLICES.
- PROVIDE 2-#5 CONTINUOUS IN ALL WALL FOOTINGS UNLESS OTHERWISE DETAILED.
- CONC. FOR FOOTINGS TO BE 3000 LBS PER SQ. IN. COMPRESSION IN 28 DAYS.

- GENERAL NOTES**
- DESIGN LIVE LOADS - ROOF 40 P.S.F., FLOORS 50 + 100 P.S.F.
  - ASSUMED SOIL BEARING 3000 P.S.F.
  - ALL FOOTINGS TO BE PLACED ON UNDISTURBED SOIL.
  - THICKEN SLABS ON GRADE TO 8" x 16" WIDE UNDER 6" & 8" PARTITIONS.
  - DEPRESS SLABS ON GRADE AS REQD. FOR TOPPING, ETC. SEE ARCH. DWGS.
  - CONSTRUCTION JOINTS TO BE MADE AT CENTER LINE OF SPAN OF SLABS, JOISTS AND BEAMS.
  - PROVIDE KEYED VERTICAL BULKHEAD AT ALL CONSTRUCTION JOINTS, ALLOWING REINFORCING TO RUN THRU.
  - BOX-OUT CONCRETE WALLS FOR A MIN. OF 8" BEARING FOR BEAMS, FULL DEPTH OF BEAM.
  - STEP FOOTINGS OF BLOCK WALL CONSTR. 8" VERT. x 14" HORIZ. UNLESS OTHERWISE NOTED.
  - ALL COLUMN FOOTINGS ARE CENTERED ON COLUMN CENTER LINES UNLESS OTHERWISE NOTED.
  - DO NOT BACKFILL AGAINST FOUNDATION WALLS UNTIL SLABS OF FLOORS STAYING TOP & BOTTOM OF WALLS ARE IN PLACE.
  - PIPE TUNNEL WALLS TO BE ADEQUATELY BRACED BEFORE BACKFILLING.
  - VERIFY ALL EXISTING CONDITIONS AND DIMENSIONS IN FIELD.
  - VERIFY SIZE AND LOCATIONS OF ALL OPENINGS WITH MECHANICAL CONTRACTOR.
  - PROVIDE 3/8" CABLES AT 2' OF 34'-0" SPAN JOISTS AT FIRST, SECOND, & THIRD FLOORS.

- NOTE:**
- ALL 30" WIDE PANS TO HAVE W/5" TAPERED ENDS.
  - ALL BRIDGING JOISTS FOR 16'1 1/2" PAN CONSTR. TO BE 7" WIDE WITH 1-#6 TOP & BOTT.
  - LAP ALL BRIDGING REINF. 2'0" AT SPLICES.
  - PROVIDE #3 REIN. TEMP. REIN. IN SLABS AT PAN-JOIST CORNER.

**CLASSROOM BUILDING FOR ST. CLOUD STATE COLLEGE**

DEPARTMENT OF ADMINISTRATION STATE OF MINNESOTA  
STATE CAPITOL BUILDING ST. PAUL, MINNESOTA  
ARCHITECTURAL AND ENGINEERING DIVISION

**FEDERAL PROJECT MINN. 4-2983**

**TRAYNOR AND HERMANSON ARCHITECTS ST. CLOUD, MINNESOTA**  
STRUCTURAL ENGINEERS - JOHNSTON & SAHLMAN MINNEAPOLIS  
CONSULTING ENGINEERS - ORR, SCHELEN, MAYERSON & ASSOCIATES INC. MINNEAPOLIS

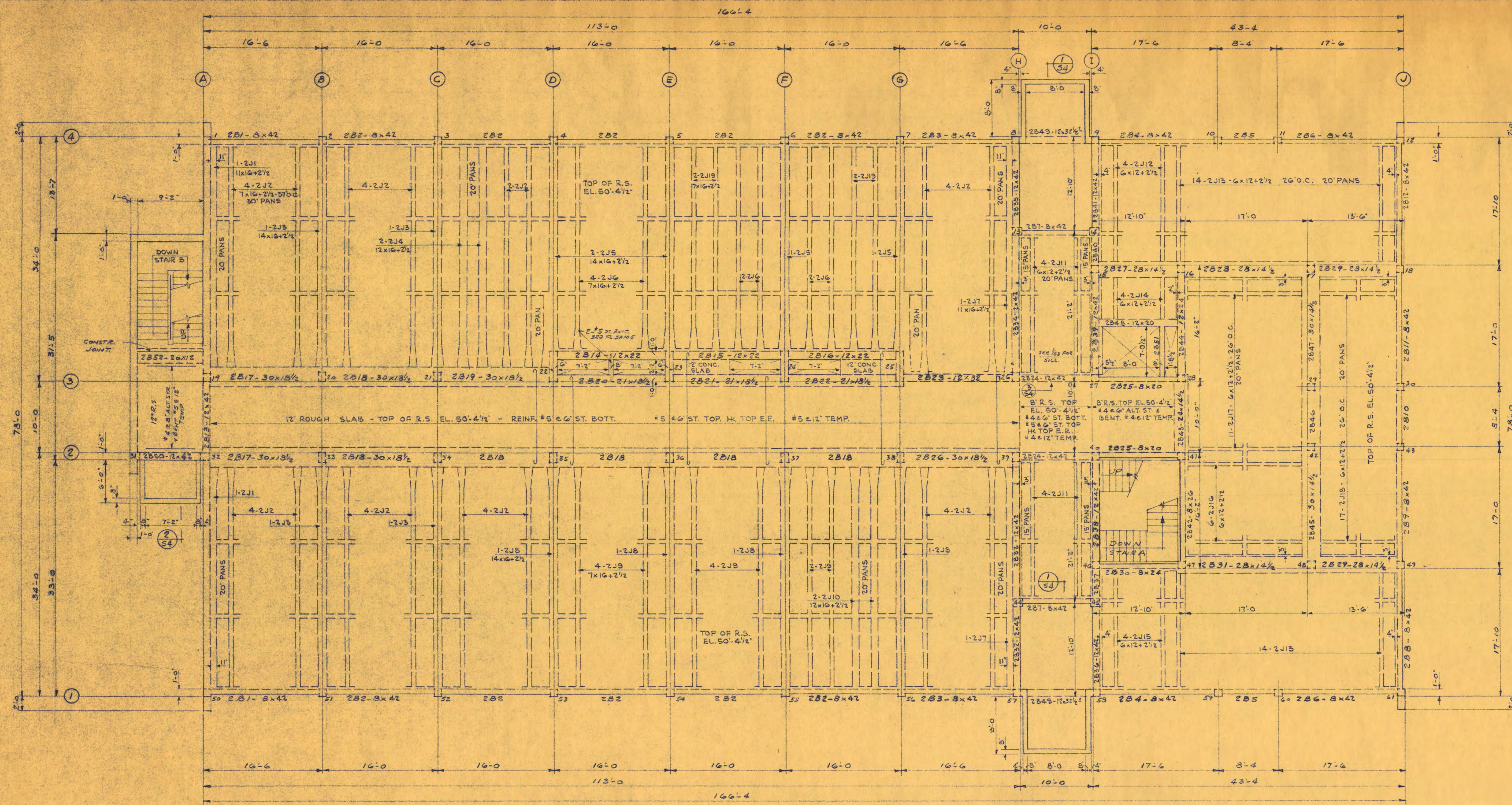
APPROVED BY: \_\_\_\_\_ DATE: 5/15/67  
APPROVED BY: \_\_\_\_\_ DRAWN BY: J.D.J.S.  
APPROVED BY: \_\_\_\_\_ CHECKED: J.W.S.

**FIRST FLOOR FRAMING PLAN**

DEPARTMENT OF ADMINISTRATION MASTER BUILDING NUMBER 43

SHEET NO. 53

PROJECT NO. STATE OF MINNESOTA 6360090



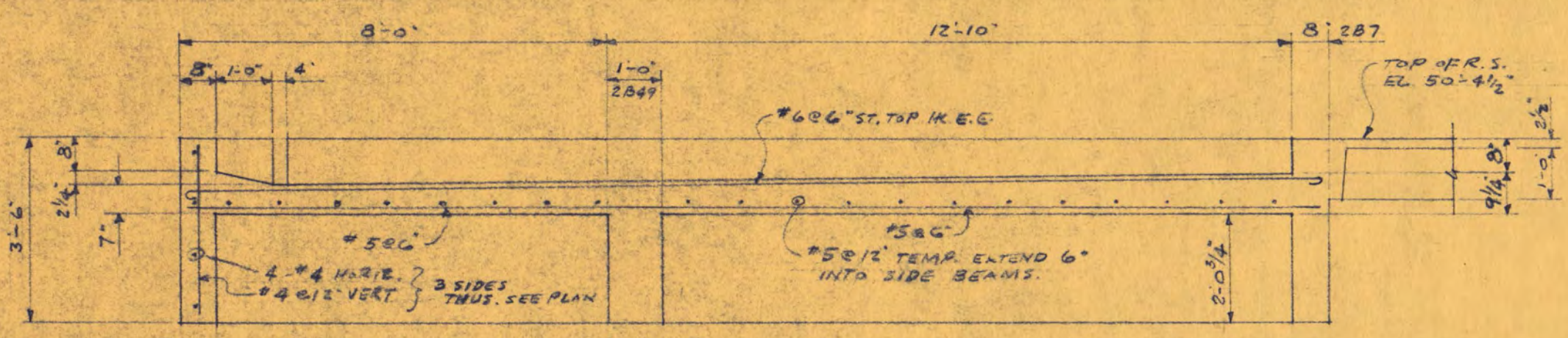
- NOTE
1. ALL 30" WIDE PANS TO HAVE "W+5" TAPERED ENDS.
  2. ALL 20" WIDE PANS TO HAVE "W+4" TAPERED ENDS. SEE PLAN.
  3. ALL BRIDGING JOISTS FOR 16+2 1/2 P & J. CONSTR. TO BE 7" WIDE WITH 1-#6 TOP & BOTT.
  4. ALL BRIDGING JOISTS FOR 12+2 1/2 P & J. CONSTR. TO BE 6" WIDE WITH 1-#5 TOP & BOTT.
  5. LAP ALL BRIDGING REINFORCING 2'-0" AT SPLICES.
  6. PROVIDE #3 @ 12" TEMP. REINF. IN SLABS OF PAN-JOIST CONSTR.

2J1	10'-0"	2-#7 x 30'-0"	10'-0"	2J1
		1 THUS		
2J2	10'-0"	1-#8 x 30'-0"	10'-0"	2J2
		14 THUS		
2J3	10'-0"	2-#9 x 30'-0"	10'-0"	2J3
		2 THUS		
2J2	10'-0"	1-#8 x 22'-0"	10'-0"	2J4
		2 THUS		
2J8	10'-0"	2-#9 x 31'-6"	11'-6"	2J5
		4 THUS		
2J9	10'-0"	1-#10 x 22'-0"	10'-0"	2J6
		8 THUS		
2J9	10'-0"	1-#8 x 31'-6"	11'-6"	2J19
		2 THUS		
2J10	10'-0"	1-#8 x 22'-0"	10'-0"	2J18
		2 THUS		
2J10	10'-0"	1-#8 x 30'-0"	10'-0"	2J19
		2 THUS		
2J1	10'-0"	2-#8 x 30'-0"	10'-0"	2J1
		1- THUS		

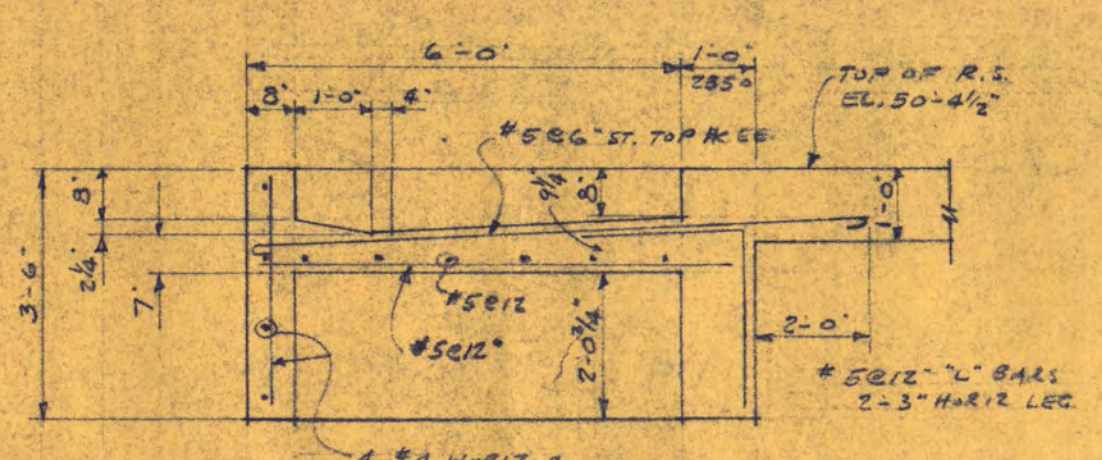
ADDED TOP BARS REQUIRED AT JOISTS OVER CORRIDOR

SECOND FLOOR FRAMING PLAN

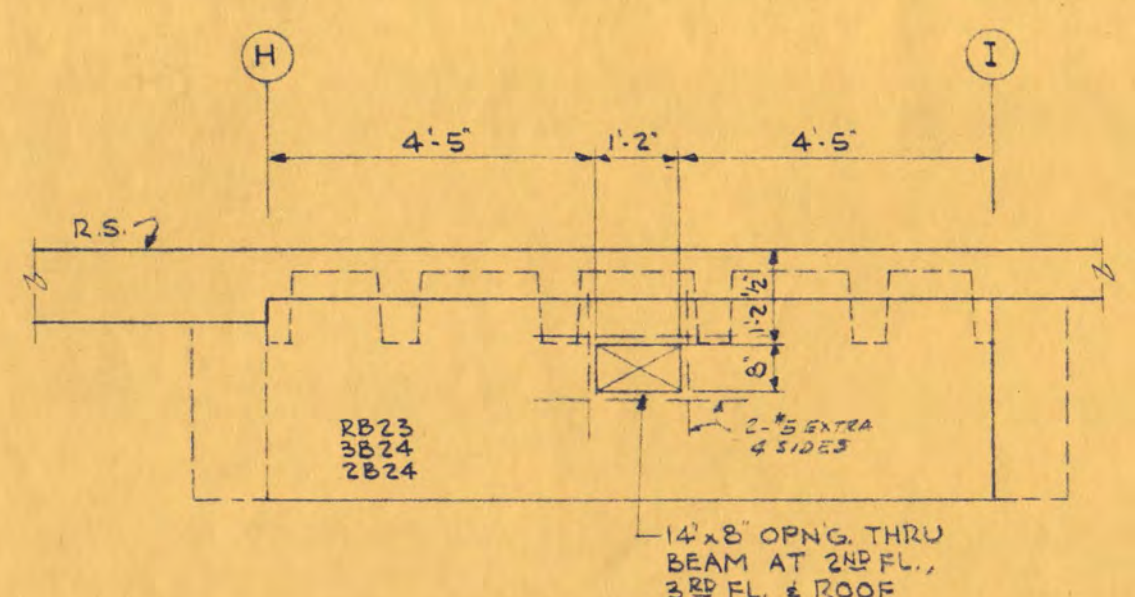
TOP OF R.S. ELEV. 50'-4 1/2"



1 3/8" = 1'-0"



2 3/8" = 1'-0"



3 3/16" = 1'-0"

CLASSROOM BUILDING FOR ST. CLOUD STATE COLLEGE

DEPARTMENT OF ADMINISTRATION STATE OF MINNESOTA  
STATE CAPITOL BUILDING ST. PAUL, MINNESOTA  
ARCHITECTURAL AND ENGINEERING DIVISION

FEDERAL PROJECT MINN. 4-2983

TRAYNOR AND HERMANSON ARCHITECTS  
ST. CLOUD, MINNESOTA  
STRUCTURAL ENGINEERS - JOHNSTON & SAHLMAN MINNEAPOLIS  
CONSULTING ENGINEERS - ORR, SCHELEN, MAYERON & ASSOCIATES INC. MINNEAPOLIS

APPROVED BY: PRESIDENT OF ST. CLOUD STATE COLLEGE  
APPROVED BY: STATE COLLEGE BOARD  
APPROVED BY: COMMISSIONER OF ADMINISTRATION AN AUTHORIZED SIGNATURE

DATE: 5/15/47  
DRAWN BY: J.D. J.S.  
CHECKED: J.W.S.

SECOND FLOOR FRAMING PLAN

DEPARTMENT OF ADMINISTRATION MASTER BUILDING NUMBER

43

SHEET NO.

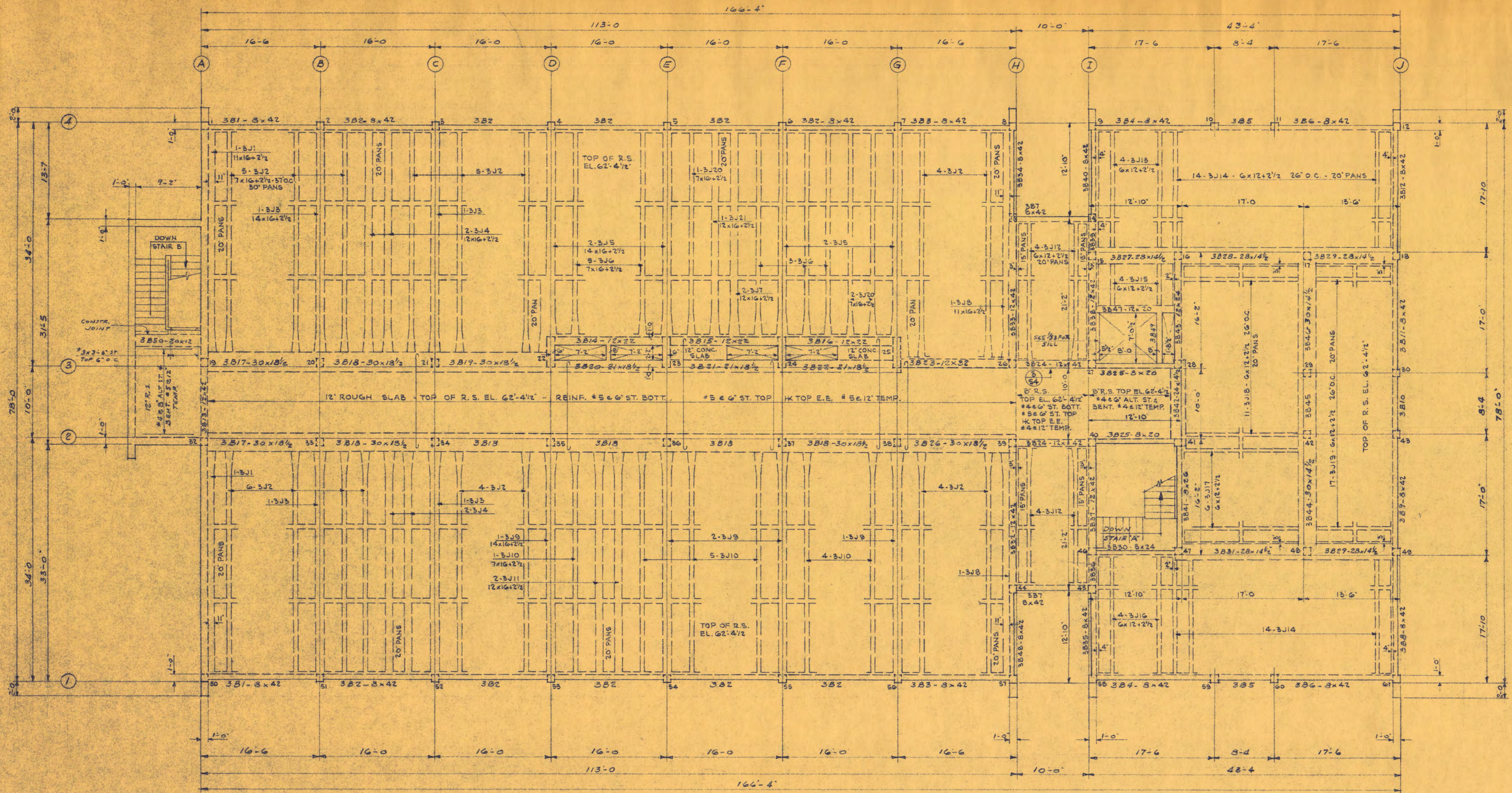
54

OF 8 PROJECT NO.

STATE OF MINNESOTA

6360090

18



THIRD FLOOR FRAMING PLAN  
 1/8" = 1'-0"  
 TOP OF R.S. ELEV. 62'-4 1/2"

- NOTE
1. ALL 20" WIDE PANS TO HAVE 'W'+5' TAPERED ENDS.
  2. ALL 20" WIDE PANS TO HAVE 'W'+4' TAPERED ENDS. SEE PLAN.
  3. ALL BRIDGING JOISTS FOR 16'+2 1/2' P & J. CONSTR. TO BE 7' WIDE WITH 1-#6 TOP & BOTT.
  4. ALL BRIDGING JOISTS FOR 12'+2 1/2' P & J. CONSTR. TO BE 6' WIDE WITH 1-#5 TOP & BOTT.
  5. LAP ALL BRIDGING REINFORCING 2'-0" AT SPLICES.
  6. PROVIDE #3 @ 12" TEMP. REINF. IN SLABS OF PAN-JOIST CONSTR.

3J1	10'-0"	2-#7 @ 30'-0"	10'-0"	3J1
		1 THUS		
3J2	10'-0"	1-#9 @ 30'-0"	10'-0"	3J2
		15 THUS		
3J3	10'-0"	2-#8 @ 30'-0"	10'-0"	3J3
		2 THUS		
3J2	10'-0"	1-#9 @ 22'-0"	10'-0"	3J4
		1-#8 @ 30'-0"	10'-0"	
		1 THUS		
3J4	10'-0"	2-#8 @ 30'-0"	10'-0"	3J4
		1 THUS		
3J4	10'-0"	1-#9 @ 22'-0"	10'-0"	3J2
		1-#8 @ 30'-0"	10'-0"	
		1 THUS		
3J9	10'-0"	2-#9 @ 21'-6"	11'-6"	3J5
		5 THUS		
3J10	10'-0"	1-#10 @ 22'-0"	10'-0"	3J6
		6 THUS		
3J11	10'-0"	2-#9 @ 22'-0"	10'-0"	3J7
		2 THUS		
3J10	10'-0"	1-#9 @ 31'-6"	11'-6"	3J20
		1 THUS		
3J10	10'-0"	1-#9 @ 25'-9"	10'-0"	3J21
		1-#8 @ 31'-6"	11'-6"	
		1 THUS		
3J8	10'-0"	2-#8 @ 30'-0"	10'-0"	3J8
		1 THUS		

ADDED TOP BARS REQUIRED AT JOISTS OVER CORRIDOR

19

**CLASSROOM BUILDING**  
 FOR ST. CLOUD STATE COLLEGE  
 DEPARTMENT OF ADMINISTRATION STATE OF MINNESOTA  
 STATE CAPITOL BUILDING ST. PAUL, MINNESOTA  
 ARCHITECTURAL AND ENGINEERING DIVISION

FEDERAL PROJECT MINN. 4-2983

TRAYNOR AND HERMANSON ARCHITECTS  
 ST. CLOUD, MINNESOTA  
 STRUCTURAL ENGINEERS - JOHNSTON & SAHLMAN MINNEAPOLIS  
 CONSULTING ENGINEERS - ORR, SCHELEN, MAYERON & ASSOCIATES INC. MINNEAPOLIS

APPROVED BY: \_\_\_\_\_ DATE: 5/16/67  
RESIDENT OF ST. CLOUD STATE COLLEGE

APPROVED BY: \_\_\_\_\_ DRAWN BY: J.D.J.S.  
STATE COLLEGE BOARD

APPROVED BY: \_\_\_\_\_ CHECKED: J.W.S.  
COMMISSIONER OF ADMINISTRATION AN AUTHORIZED SIGNATURE

THIRD FLOOR FRAMING PLAN

DEPARTMENT OF ADMINISTRATION MASTER BUILDING NUMBER 43

SHEET NO. 55

OF 5

PROJECT NO. STATE OF MINNESOTA 6360090



