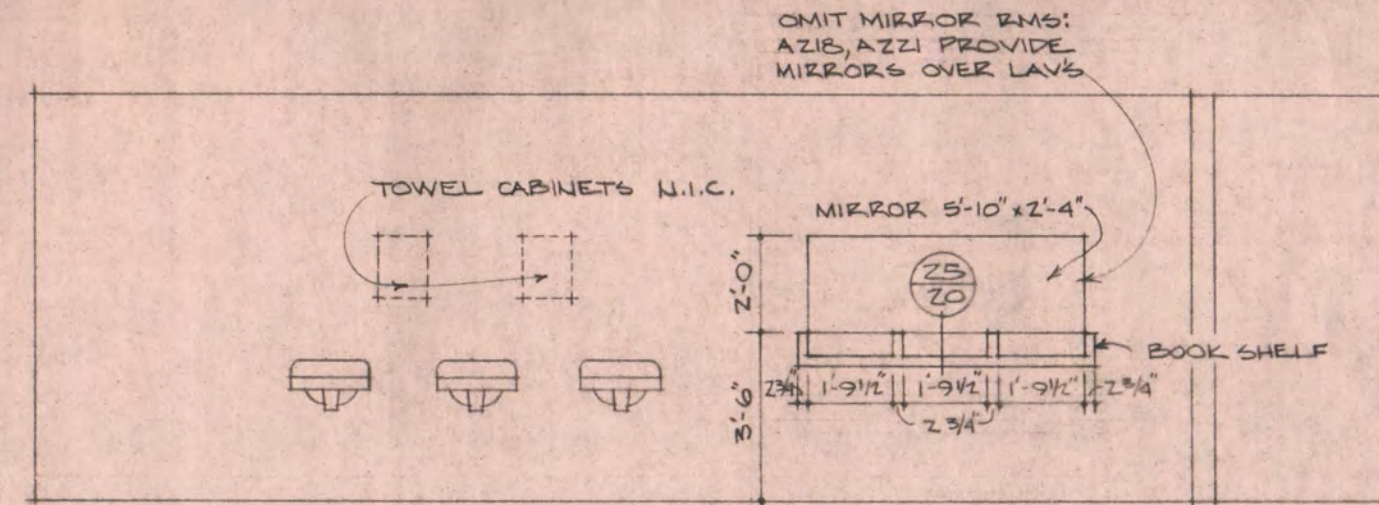
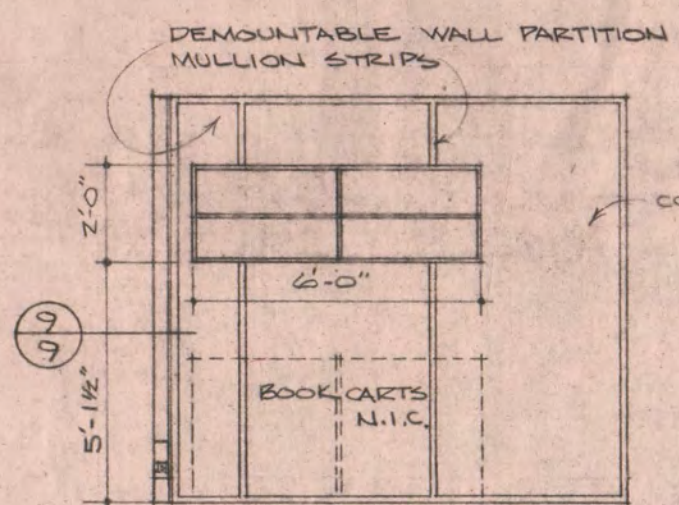


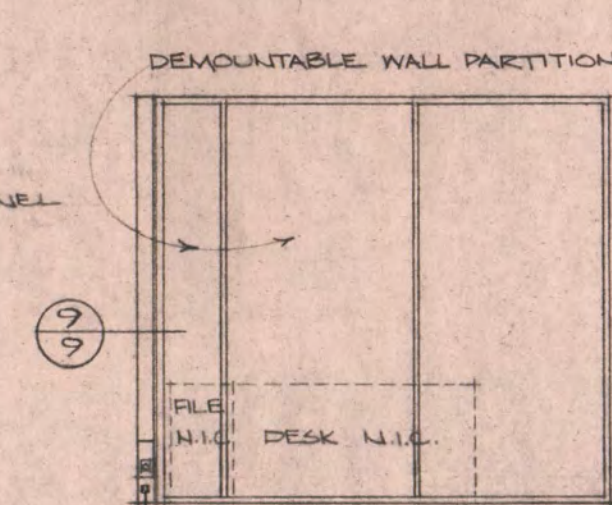
1 FACULTY WOMEN
1/4" = 1'-0" RM. B135



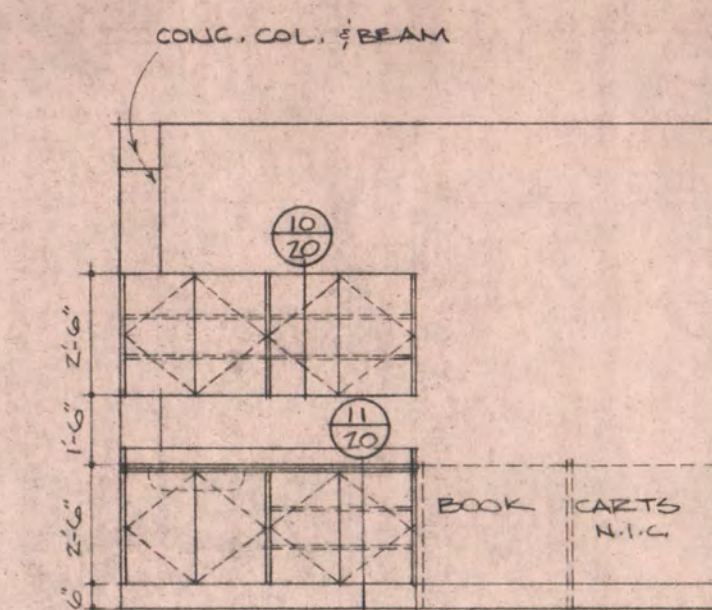
2 WOMEN TOILET RM. B116
1/4" = 1'-0"



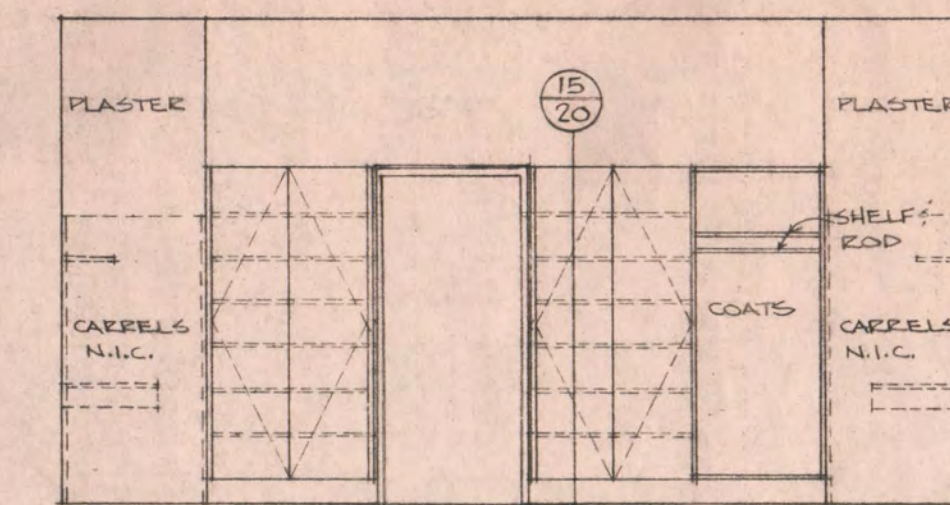
3 TYPICAL OFFICE WALL
1/4" = 1'-0"



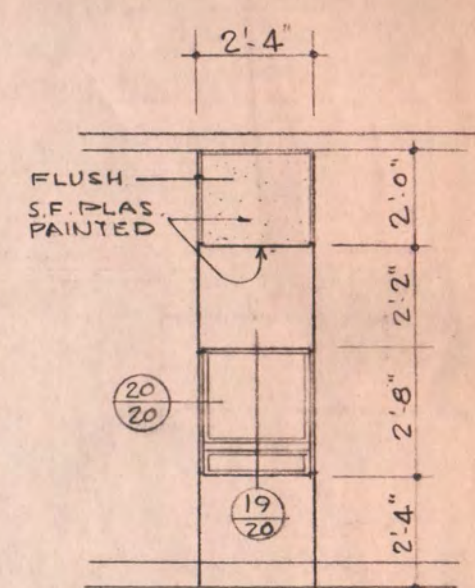
4 TYPICAL OFFICE WALL
1/4" = 1'-0"



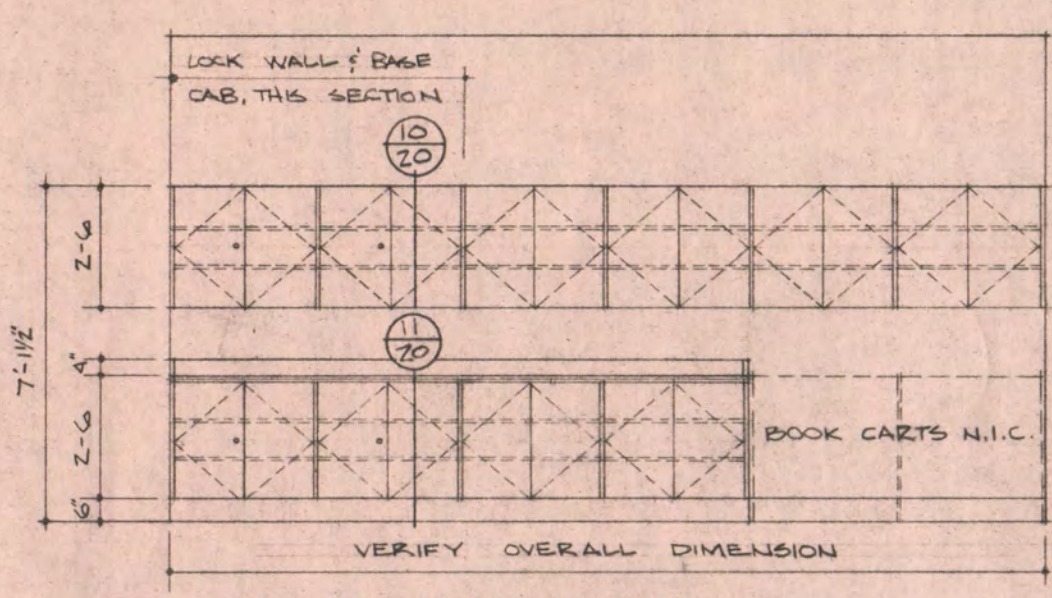
5 SPEC. ED. SEMINAR
1/4" = 1'-0" RM. A737



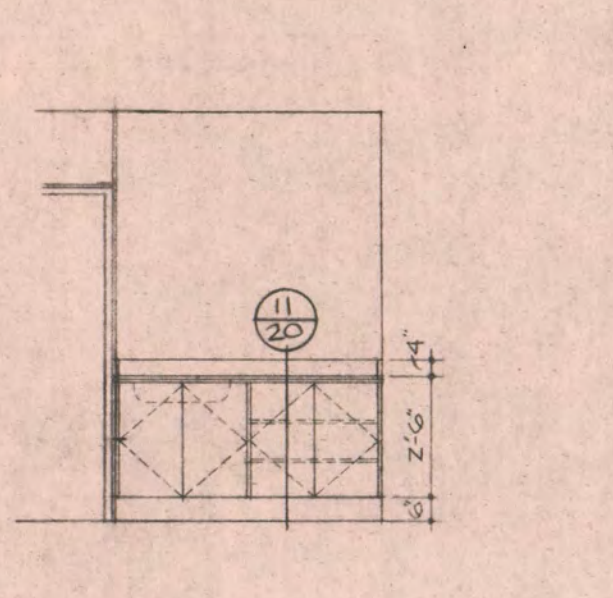
6 SPEC. ED. CARRELS
1/4" = 1'-0" RM. A738



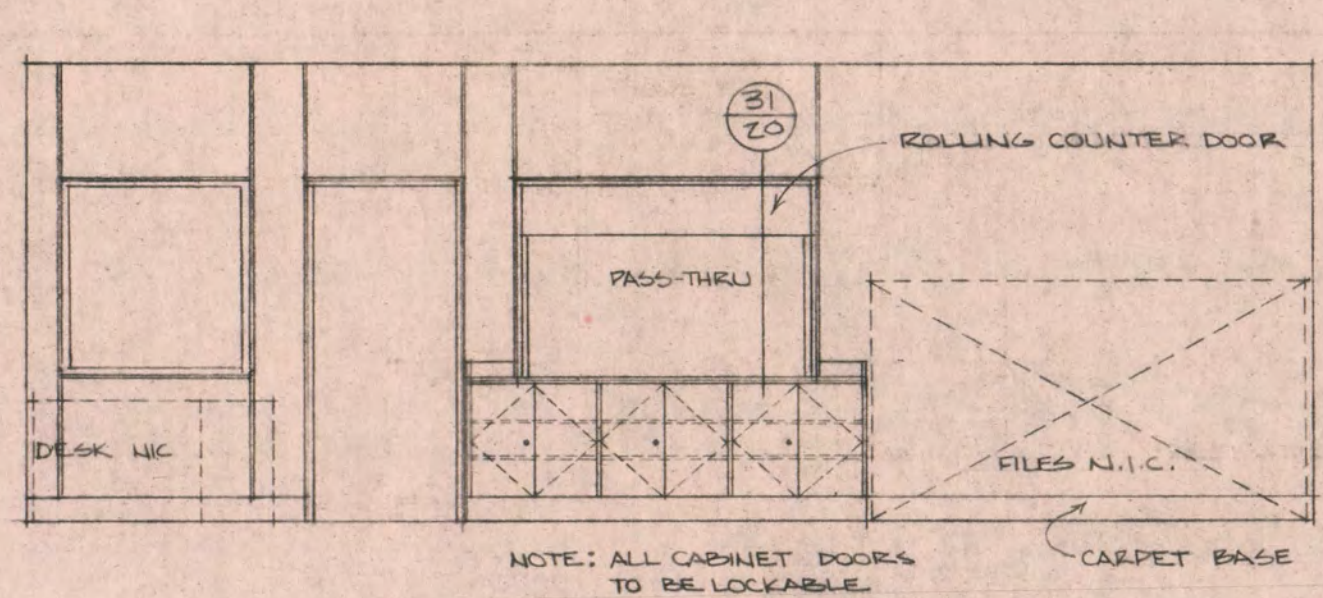
6a TELEPHONE
1/4" = 1'-0" NICHE 1/2' x 1'0"



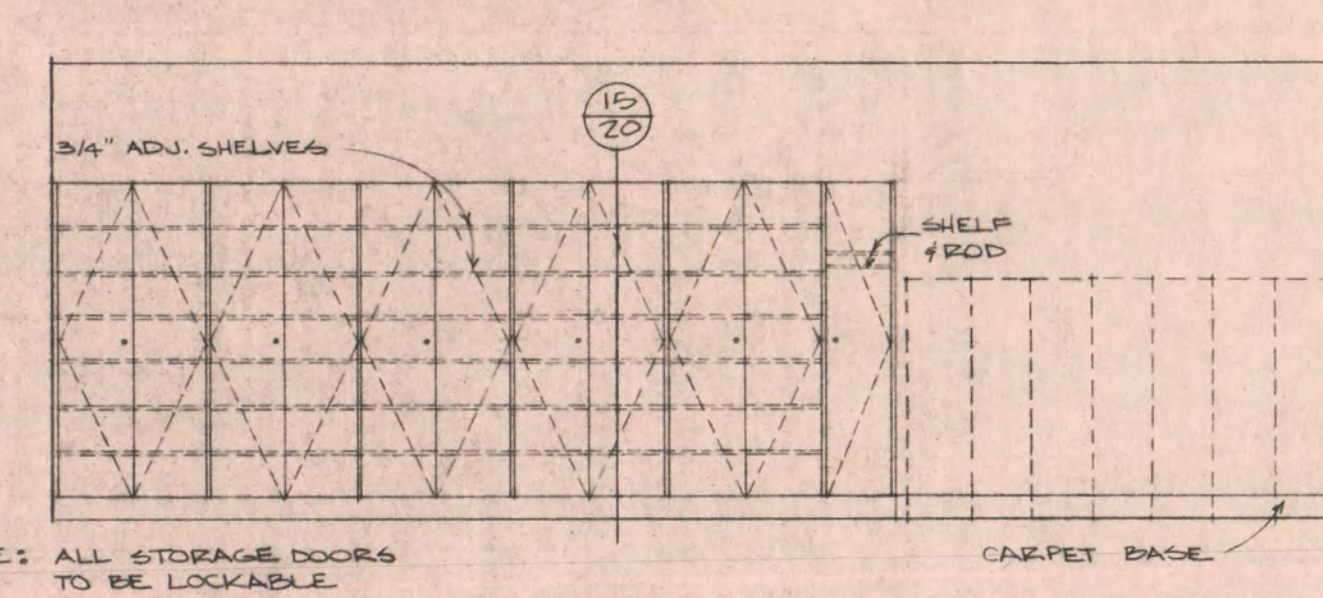
7 SPEC. EDUCATION CLASSROOM
1/4" = 1'-0" RMs. A235 & A236



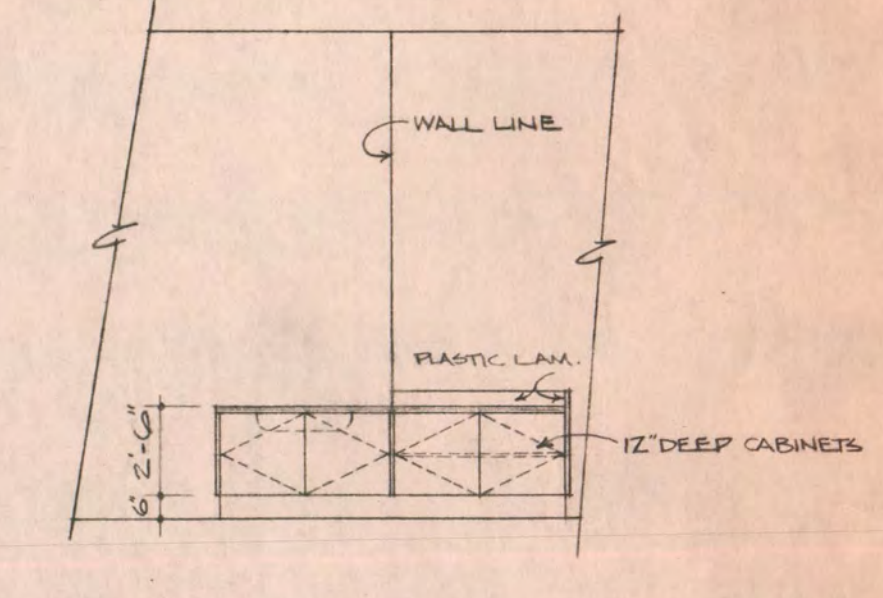
8 ROOM A253
1/4" = 1'-0"



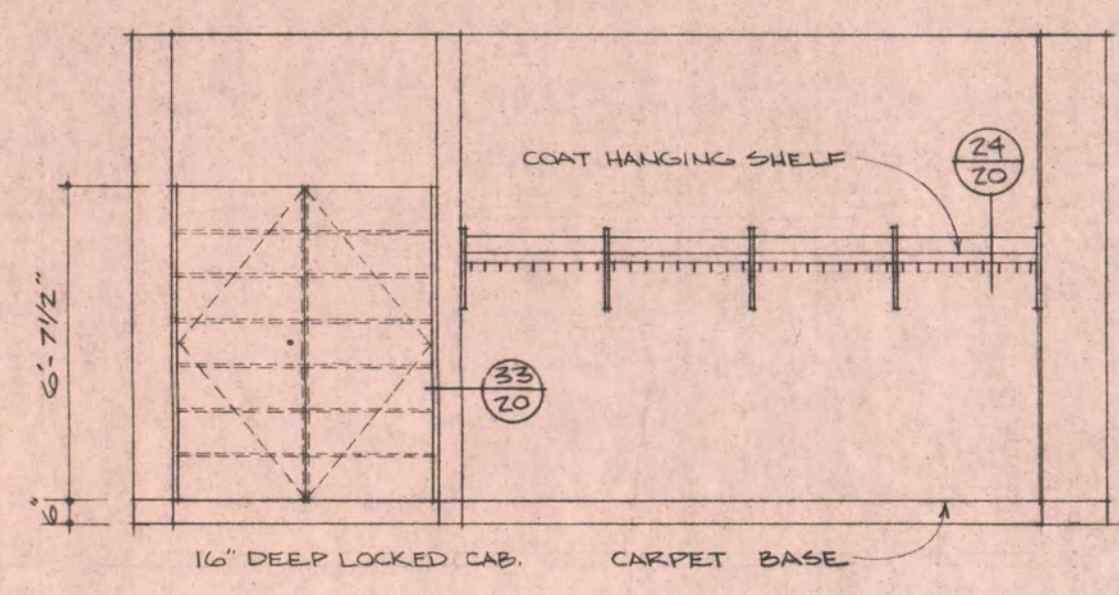
9 PSYCHOLOGY ISSUE ROOM A224
1/4" = 1'-0"



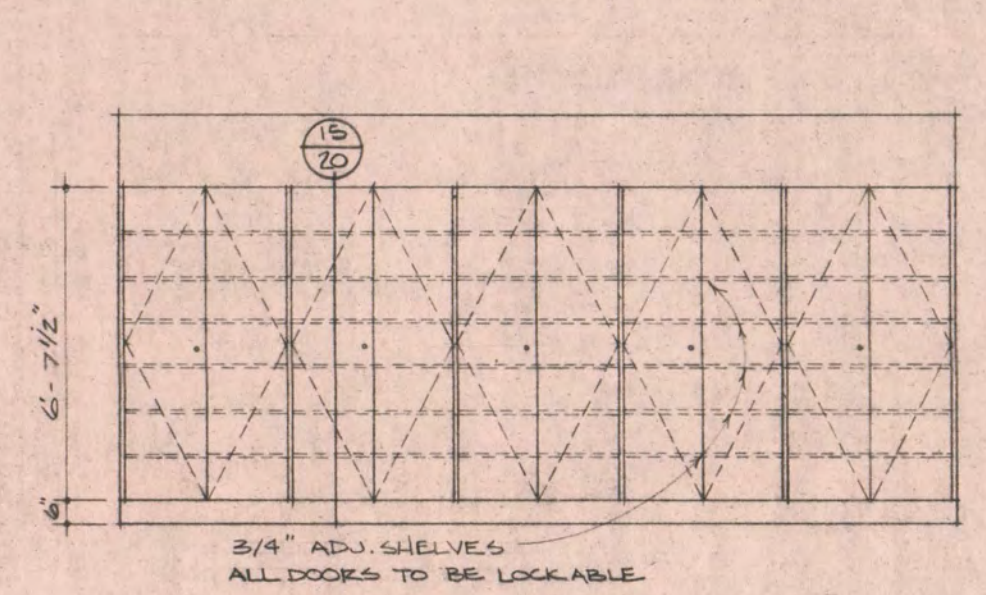
10 PSYCHOLOGY ISSUE ROOM A224
1/4" = 1'-0"



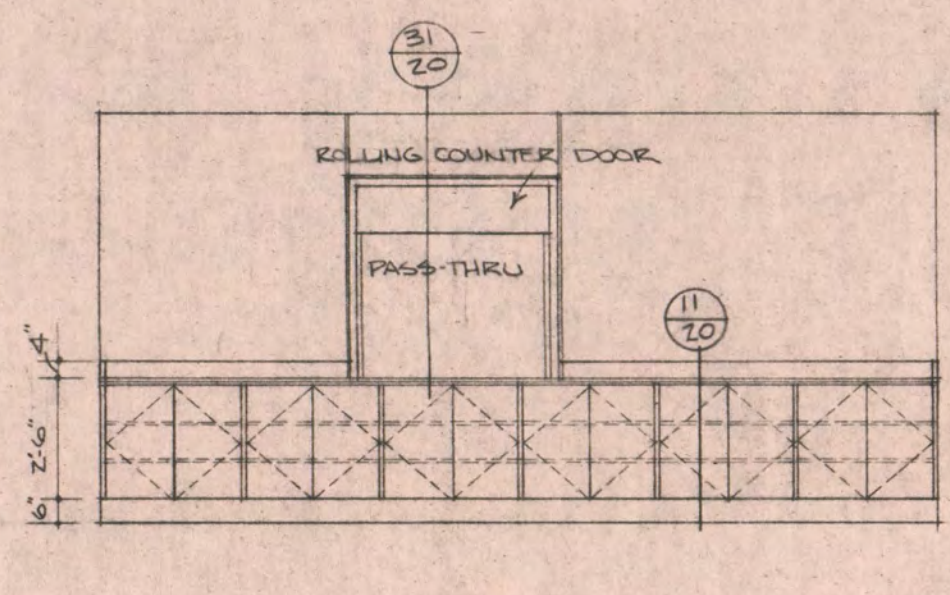
11 REMEDIAL READING RM. A124
1/4" = 1'-0"



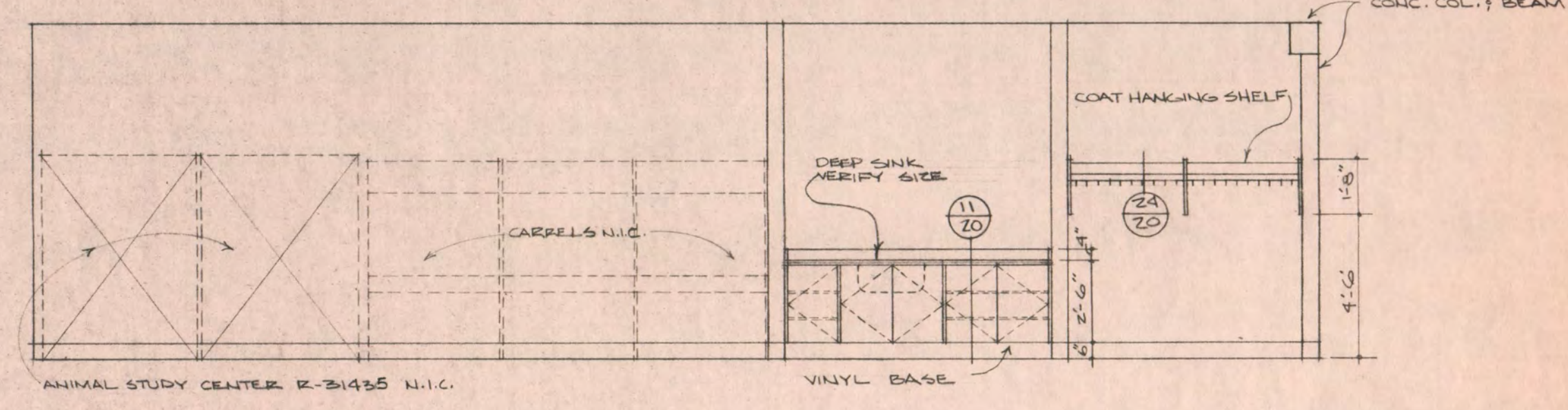
12 PSYCHOLOGY CLASSROOM B208
1/4" = 1'-0"



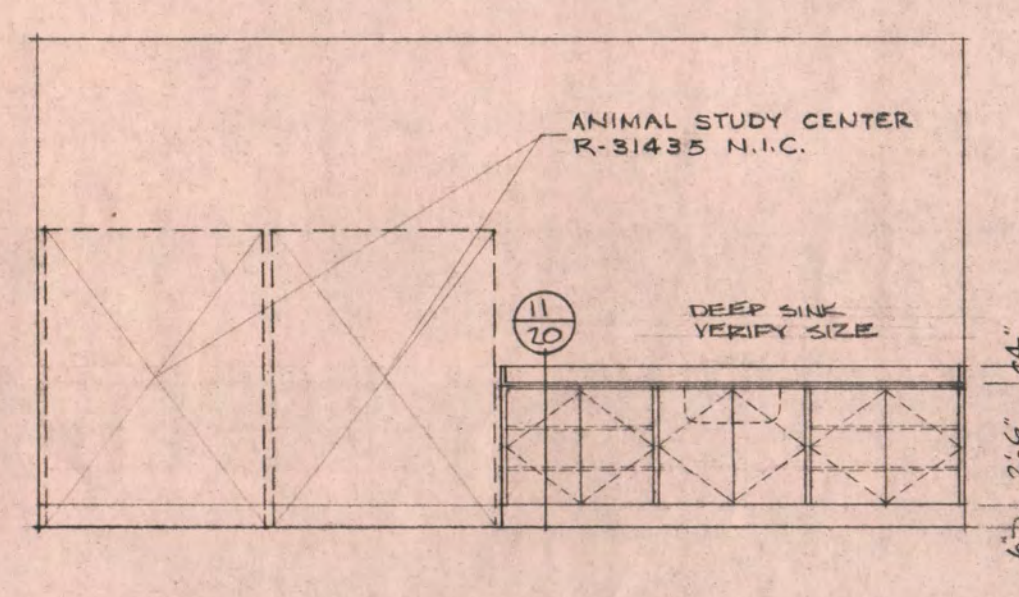
13 LAB. CHECKOUT STORAGE RM. B212
1/4" = 1'-0"



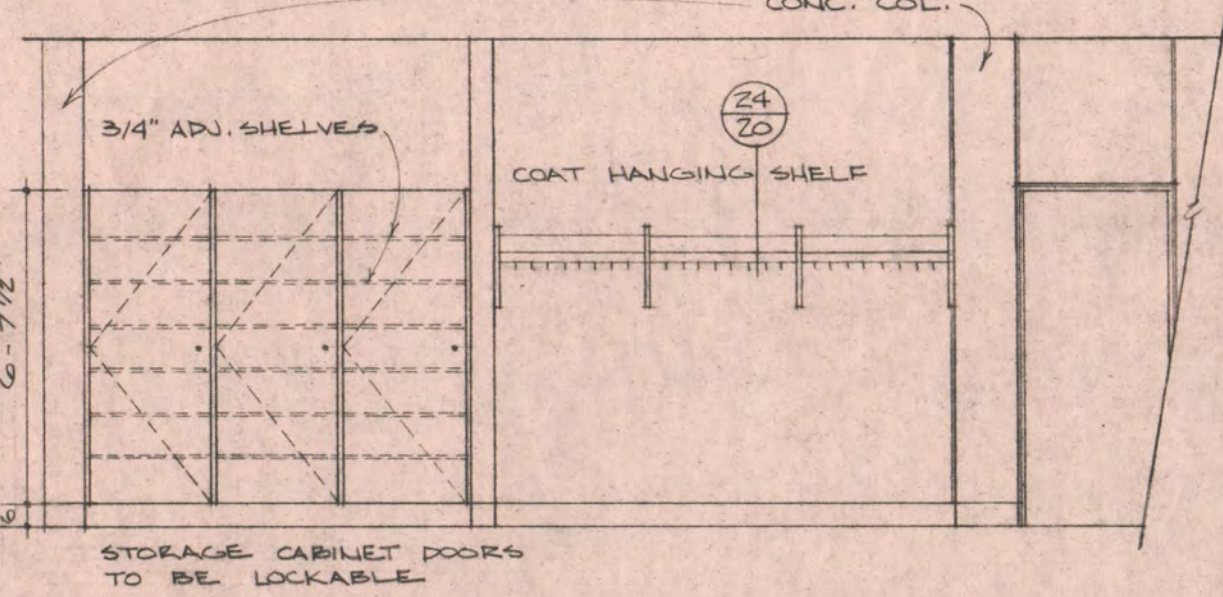
14 LAB. CHECKOUT STORAGE RM. B212
1/4" = 1'-0"



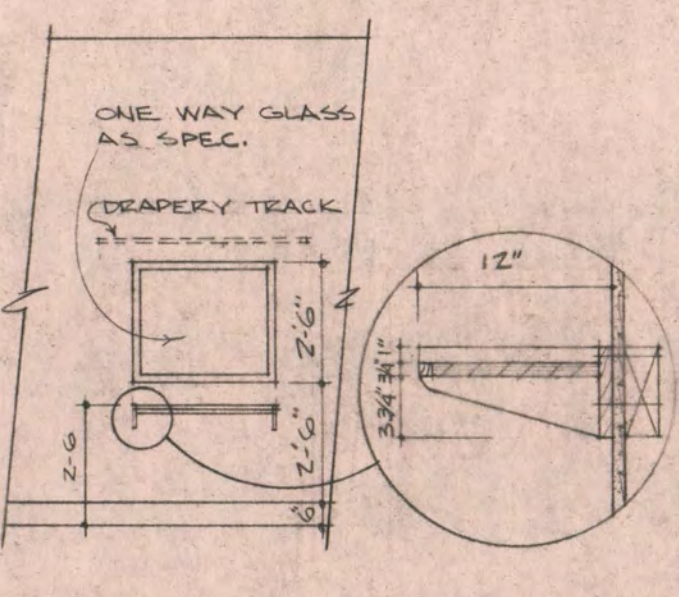
15 EXPERIMENTAL LABORATORY RM. B211
1/4" = 1'-0"



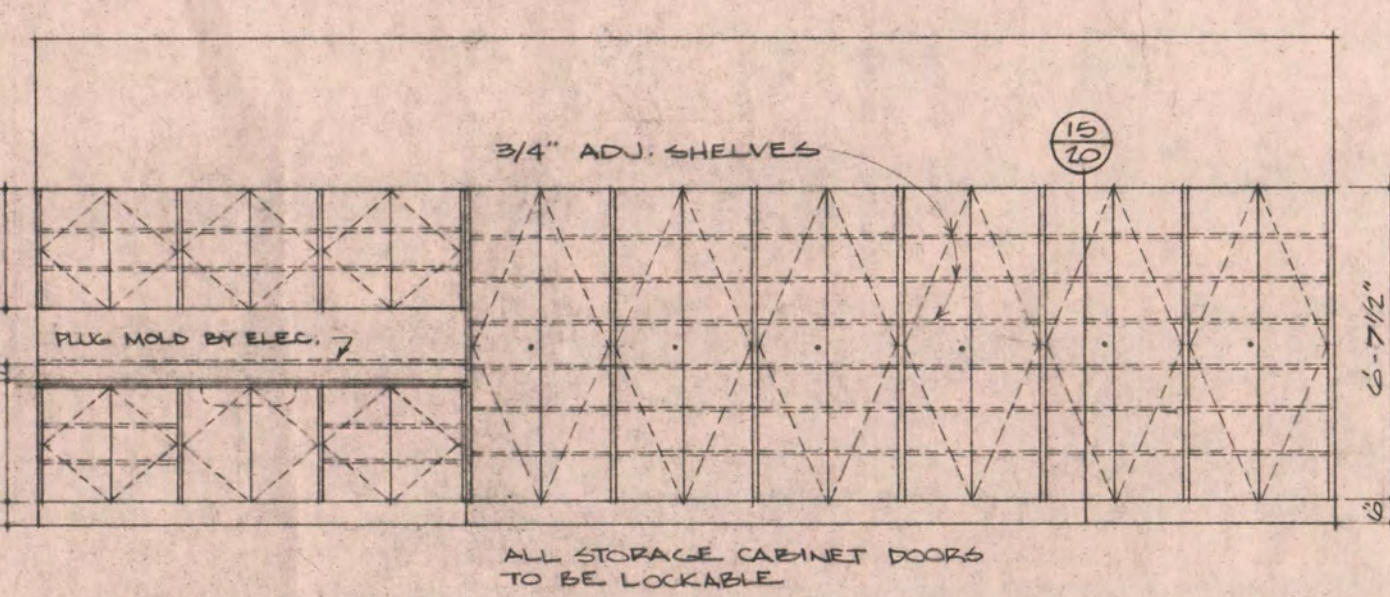
16 RESEARCH ROOM B210
1/4" = 1'-0"



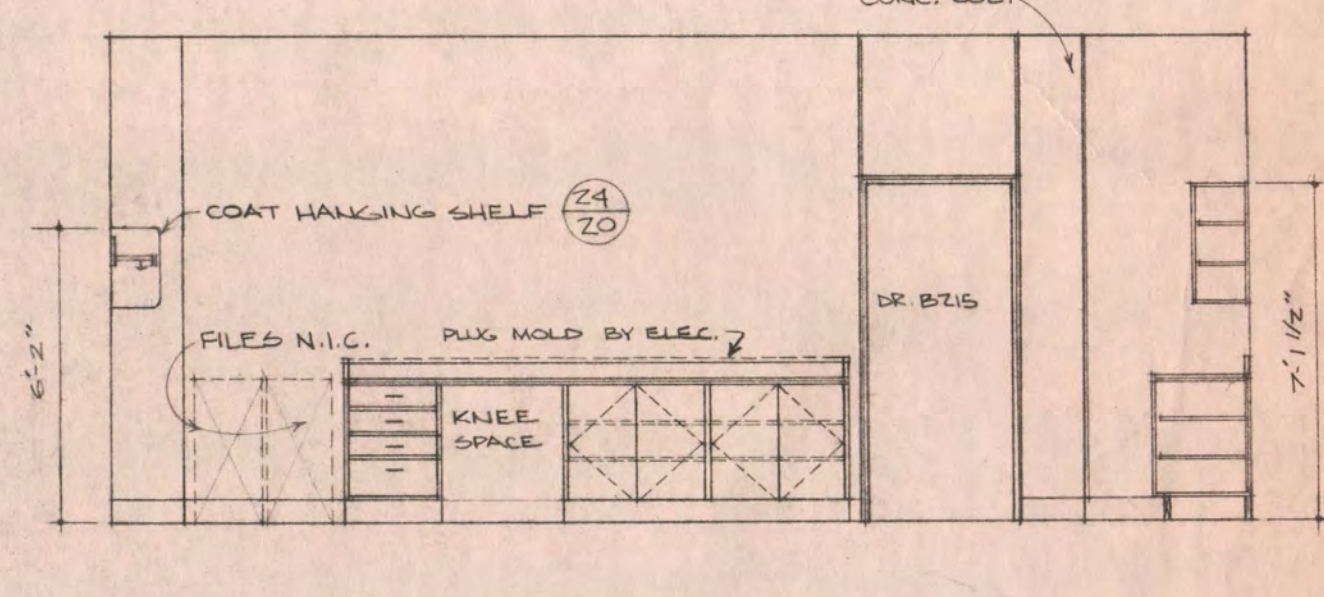
17 STATISTICS LABORATORY RM. B213
1/4" = 1'-0"



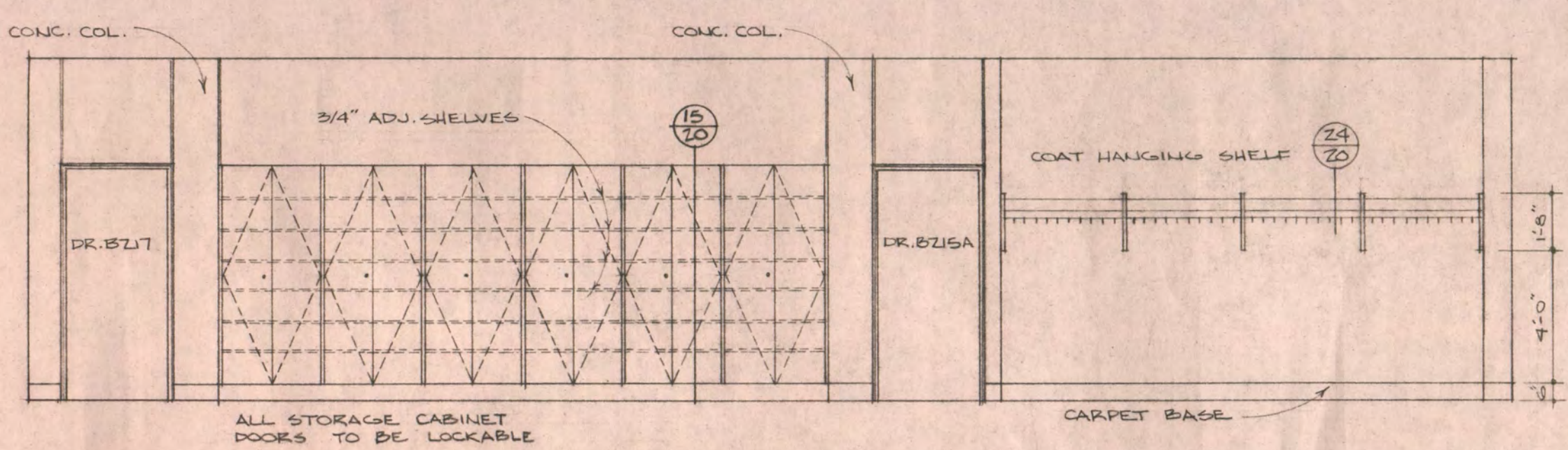
18 OBSERVATION HALL RM. B225
1/4" = 1'-0"



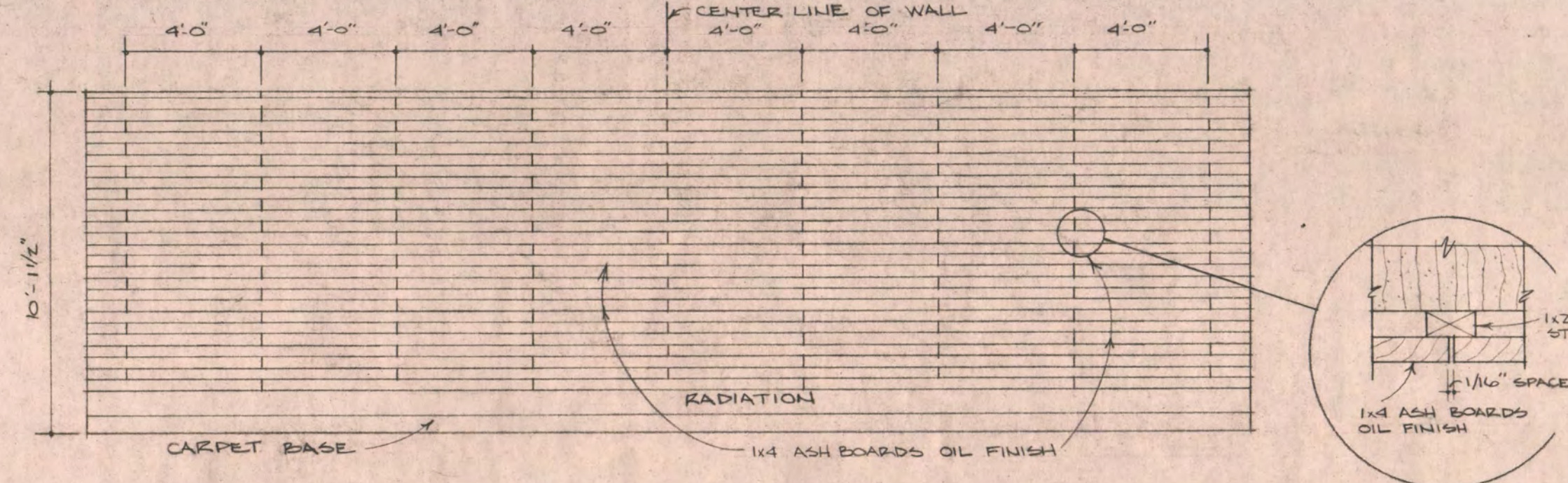
19 SPEECH SCIENCE RM. B215
1/4" = 1'-0"



20 SPEECH SCIENCE RM. B215
1/4" = 1'-0"



21 CLINICIAN STAFF ROOM B239
1/4" = 1'-0"



22 STUDENT STAFF LOUNGE B118 EAST WALL ELEV.
1/4" = 1'-0"

EDUCATION BUILDING ST. CLOUD STATE COLLEGE

TRAYNOR, HERMANSON & HAHN ARCHITECTS INC.
ST. CLOUD, MINNESOTA
STRUCTURAL ENGINEERS JOHNSTON & SAHLMAN, INC. MPLS., MINN.
CONSULTING ENGINEERS GAUSMAN & MOORE, INC. ST. PAUL, MINN.

SHEET NO. 19 OF 21

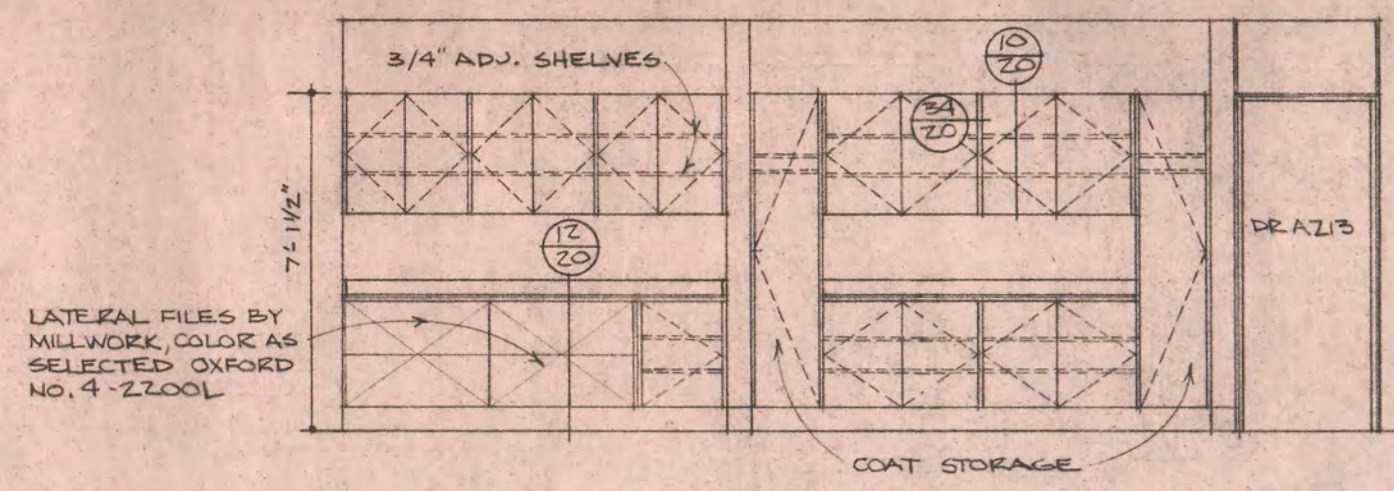
DATE NOV. 10, 1969

STATE OF MINNESOTA
DEPARTMENT OF ADMINISTRATION
ARCHITECTURAL AND ENGINEERING DIVISION
ROOM 6-10 ADMINISTRATION BUILDING
ST. PAUL 55101

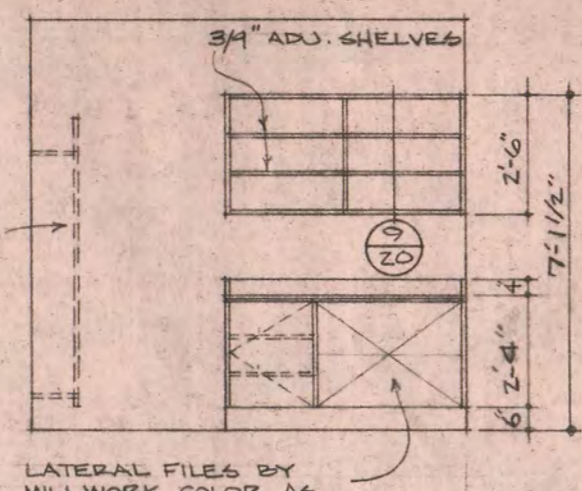
APPROVED BY _____
APPROVED BY _____
APPROVED BY _____

STATE PROJECT NO. 6360150

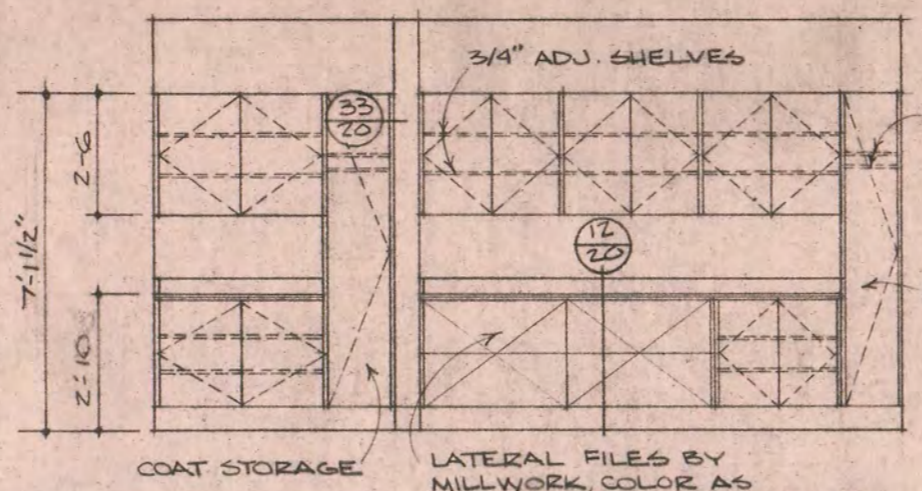
COMMISSIONER OF ADMINISTRATION
AN AUTHORIZED SIGNATURE



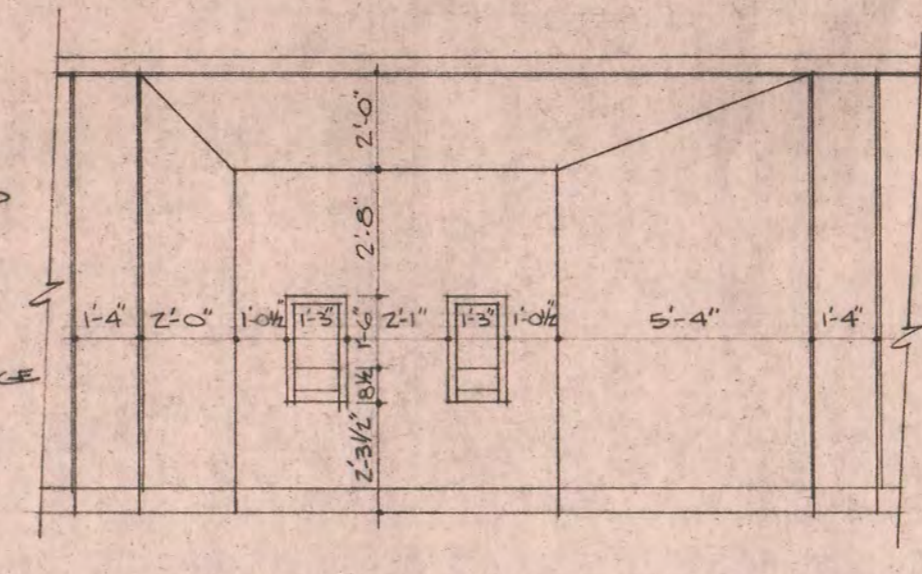
1 SECRETARY & WAITING RM. A211
20 1/4" = 1'-0"



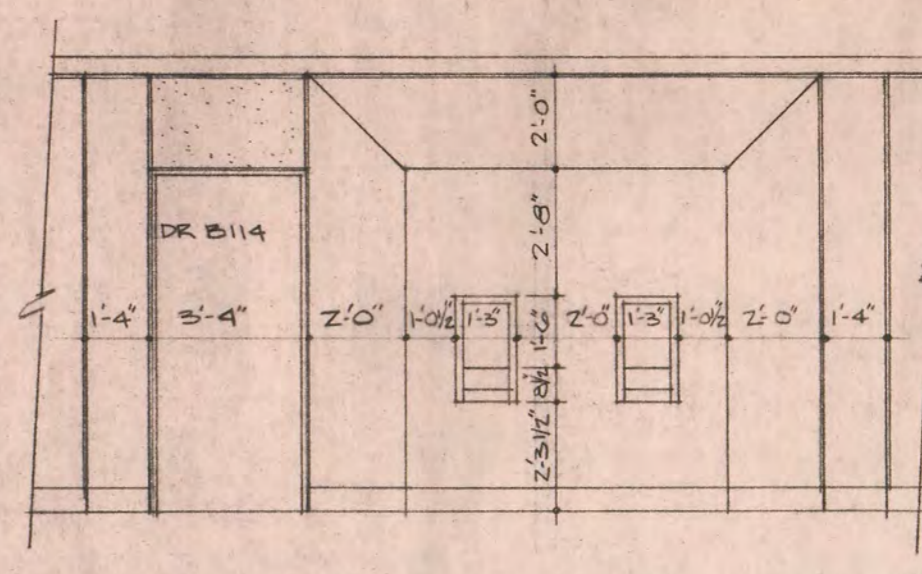
2 TYPICAL OFFICE RM. A212, A213
20 1/4" = 1'-0"



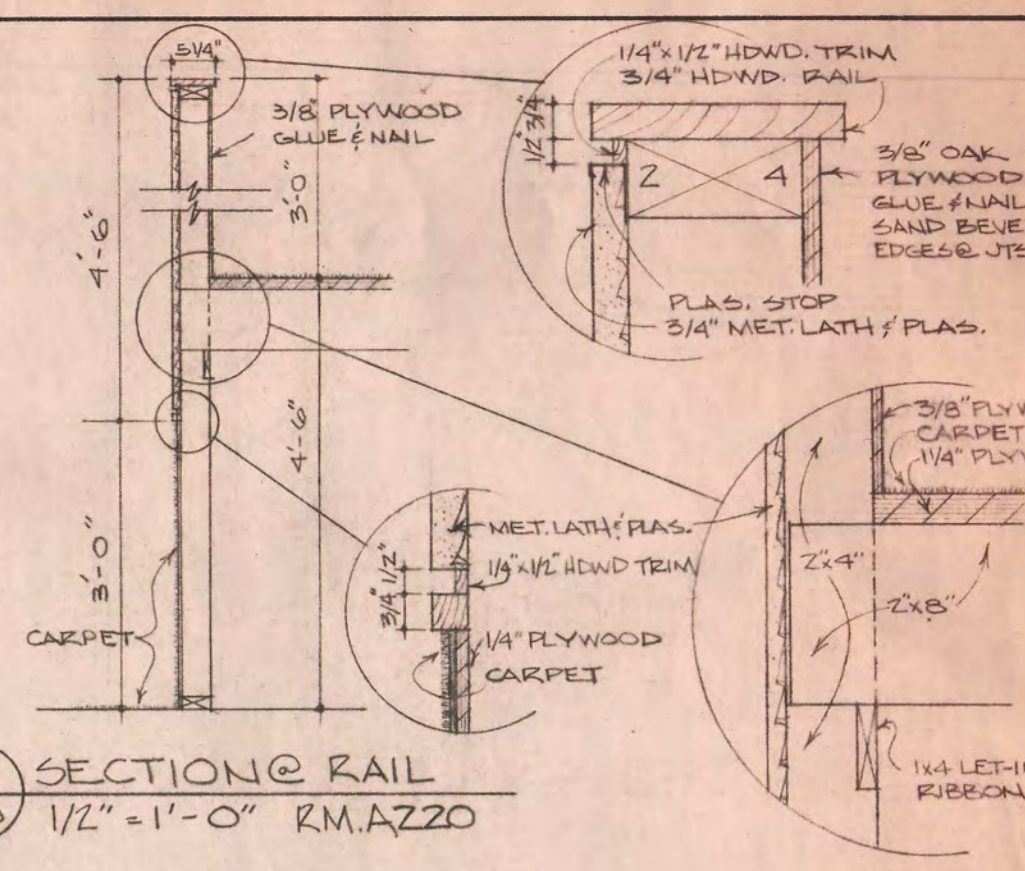
3 SECRETARY & WAITING RM. Z16
20 1/4" = 1'-0"



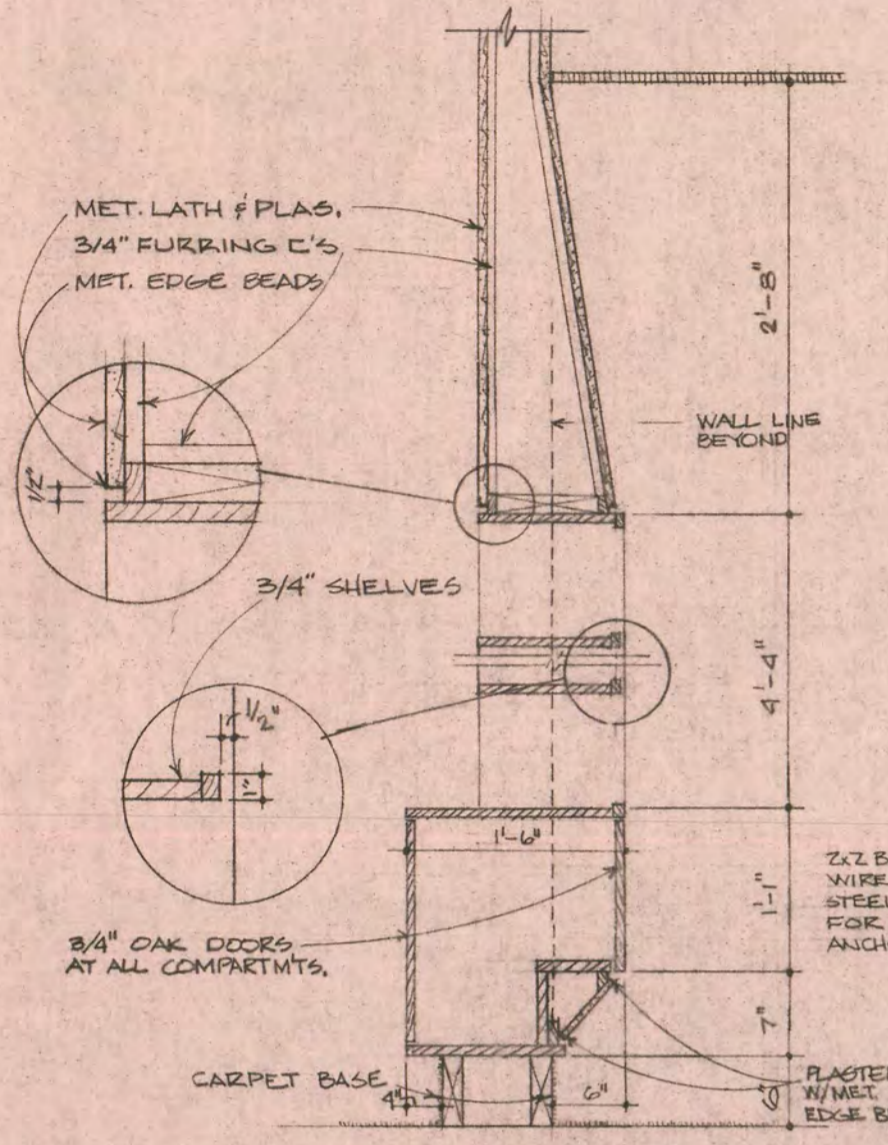
4 CORRIDOR A107
20 1/4" = 1'-0"



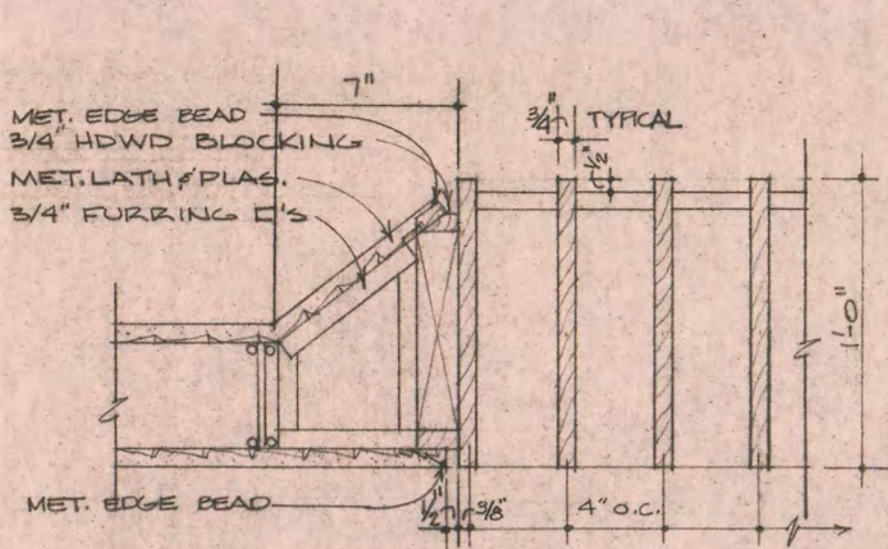
5 CORRIDOR B103
20 1/4" = 1'-0"



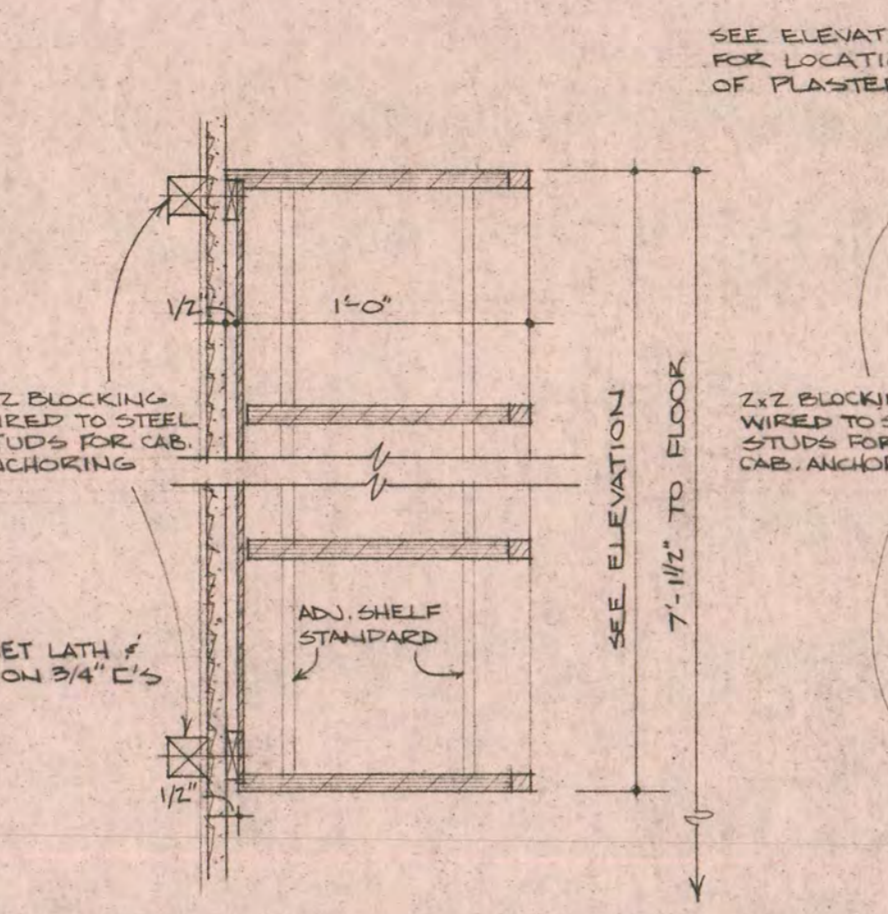
6 SECTION @ RAIL
20 1/2" = 1'-0"



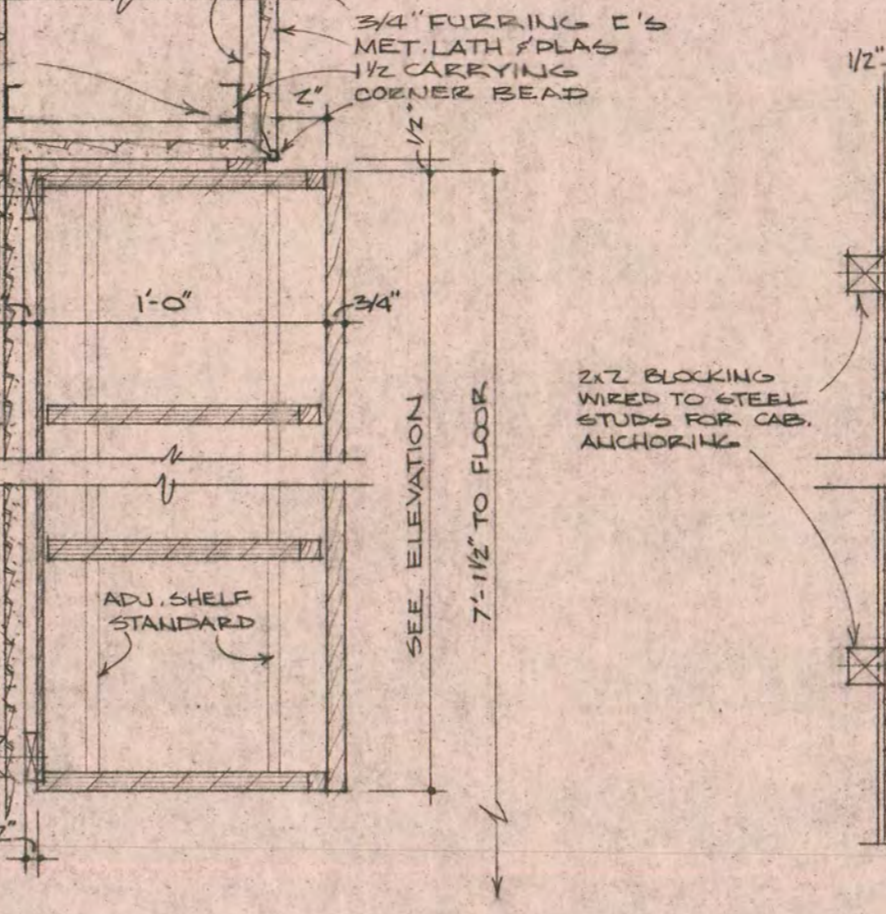
7 SECTION @ MAIL BOXES
20 3/4" = 1'-0"



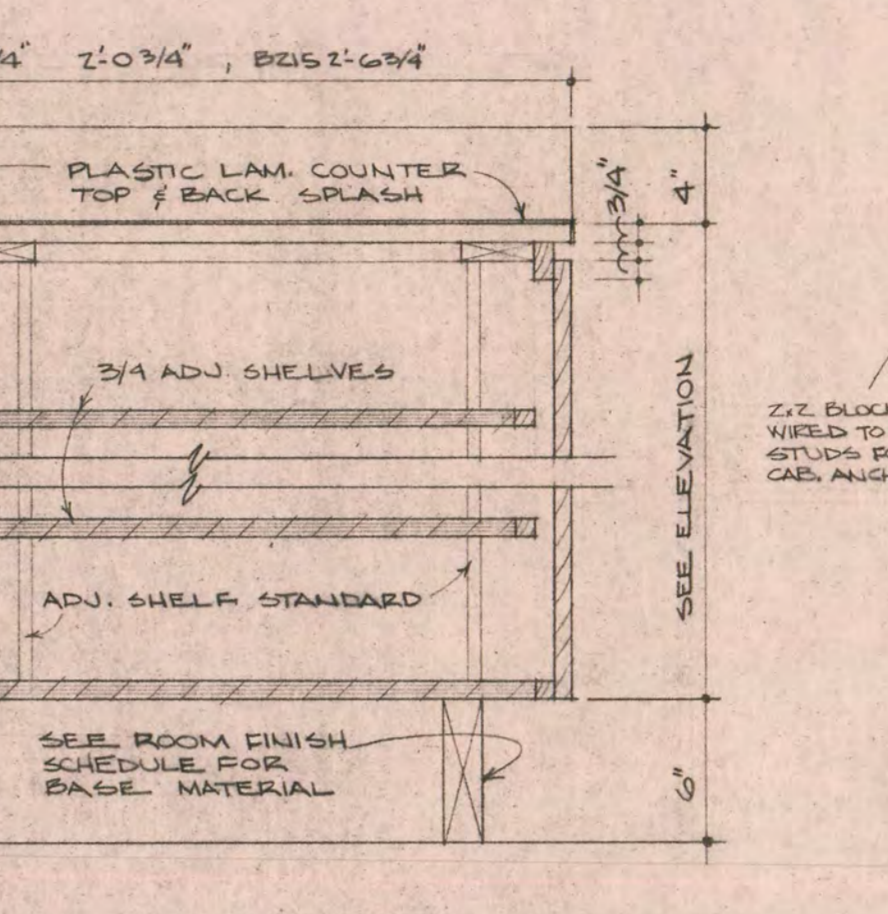
8 SECTION @ MAIL BOXES
20 1/2" = 1'-0"



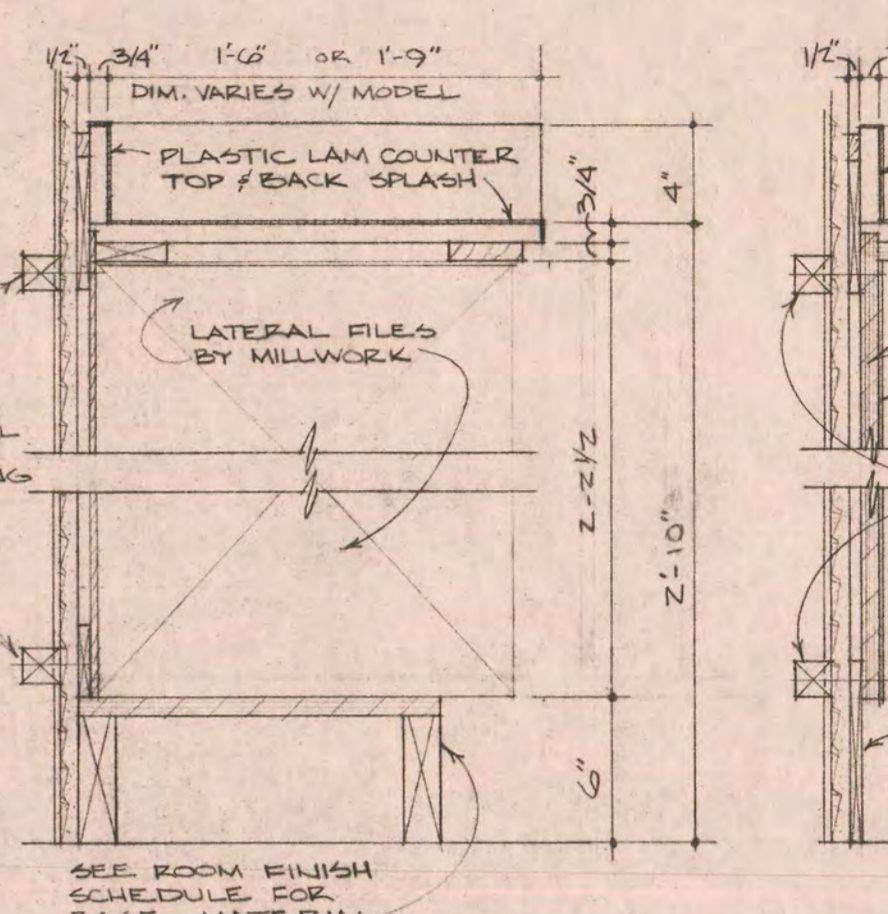
9 TYPICAL WALL CAB.
20 1/2" = 1'-0"



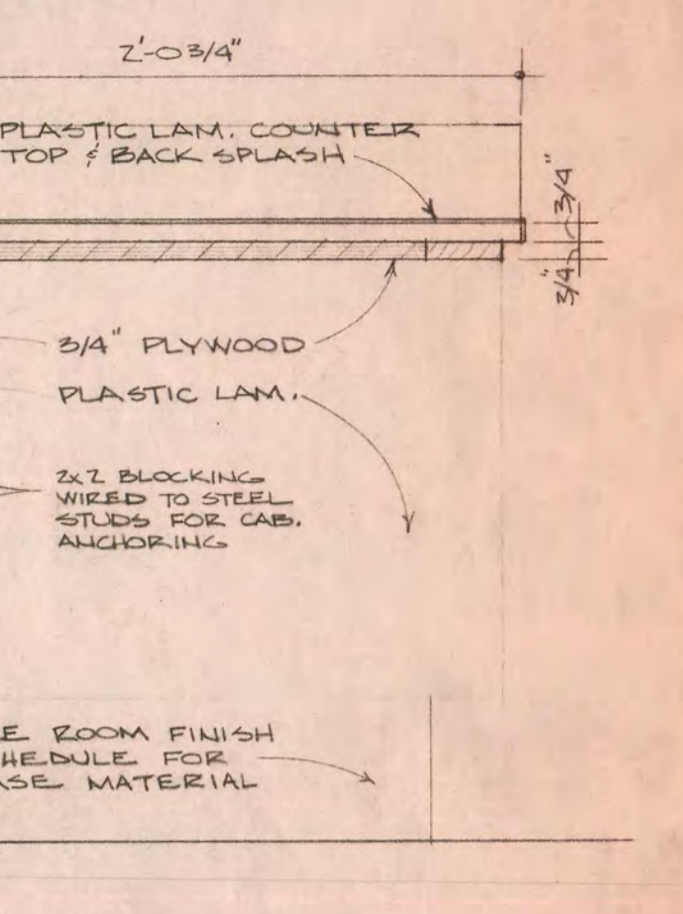
10 TYPICAL WALL CAB.
20 1/2" = 1'-0"



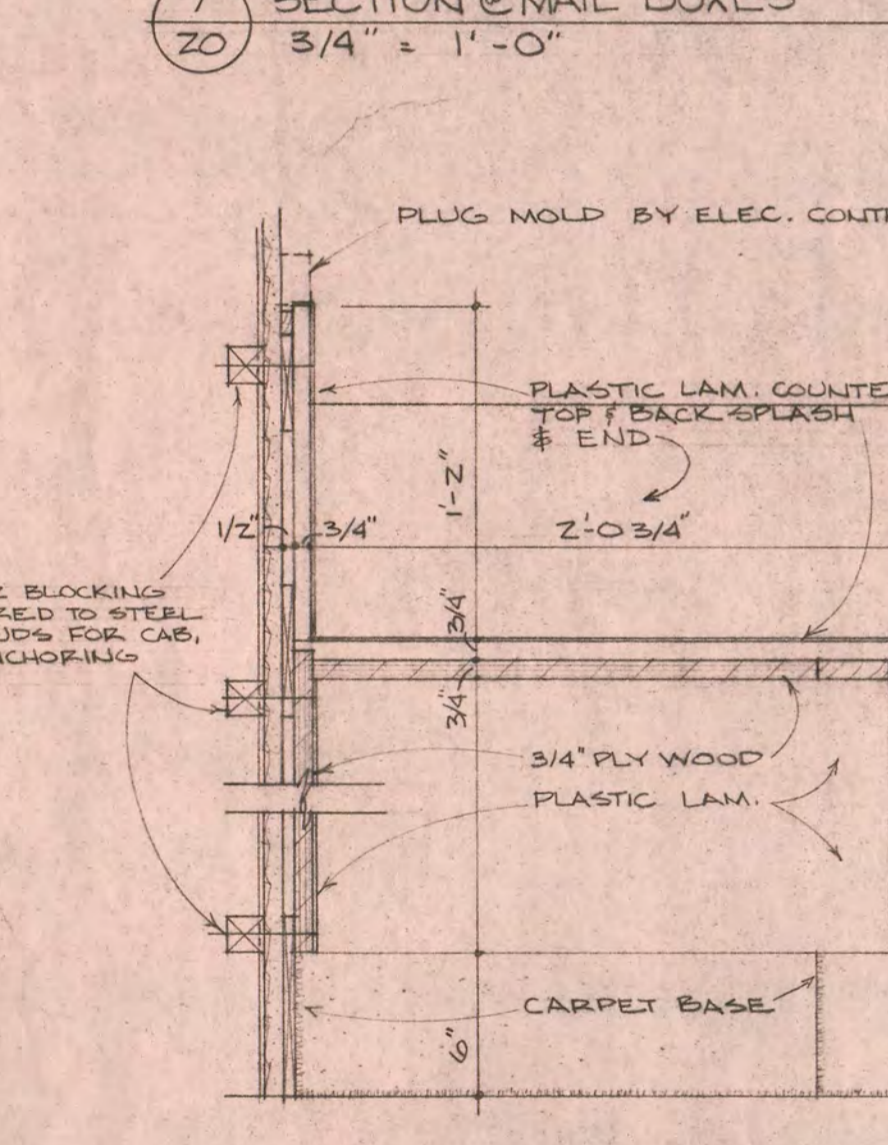
11 TYPICAL BASE CABINET
20 1/2" = 1'-0"



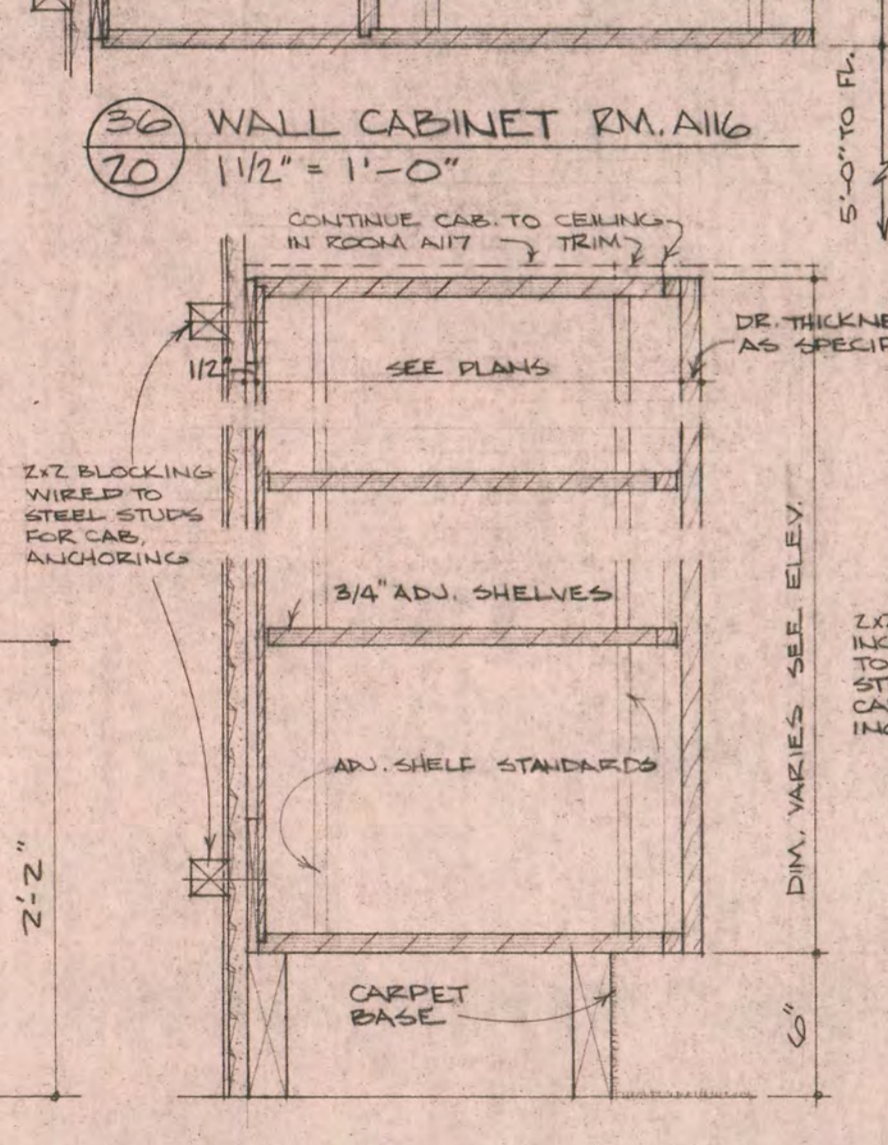
12 BASE CAB. @ LATERAL FILE
20 1/2" = 1'-0"



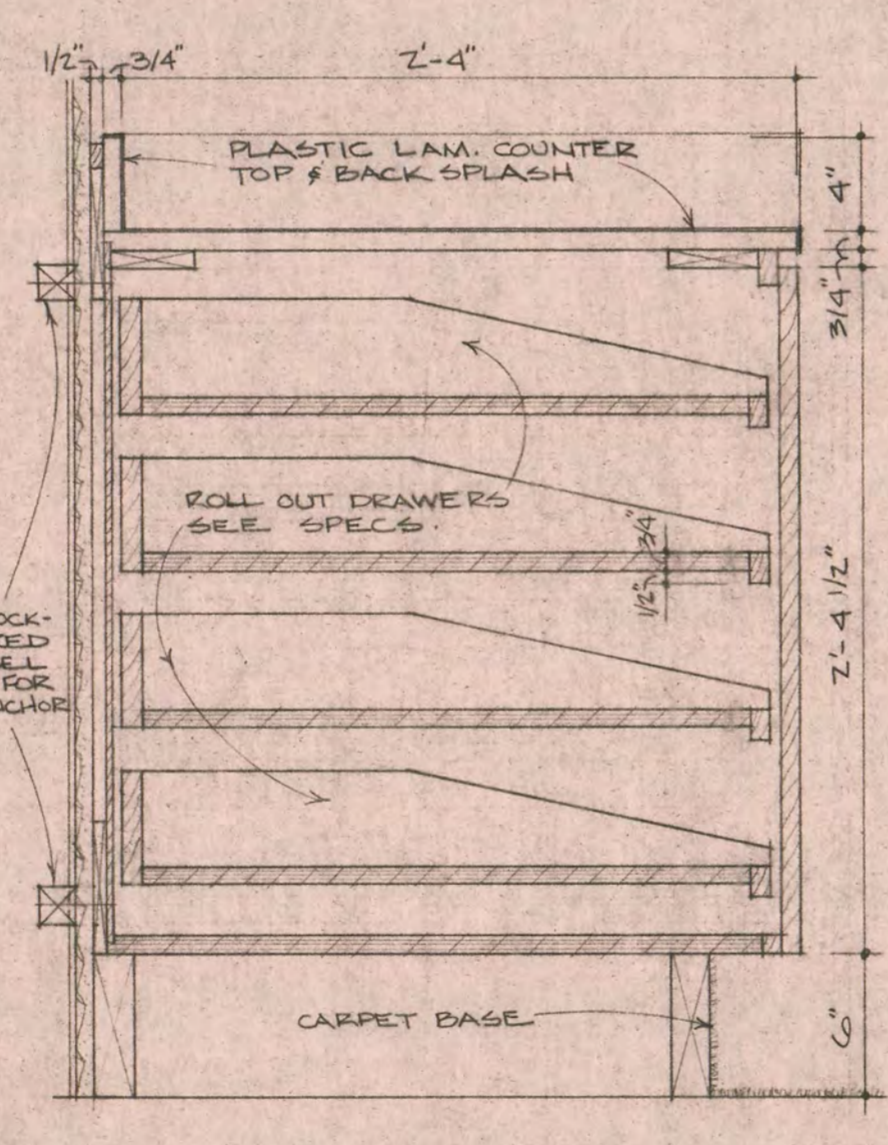
13 SECTION @ CAB. KNEE SPACE
20 1/2" = 1'-0"



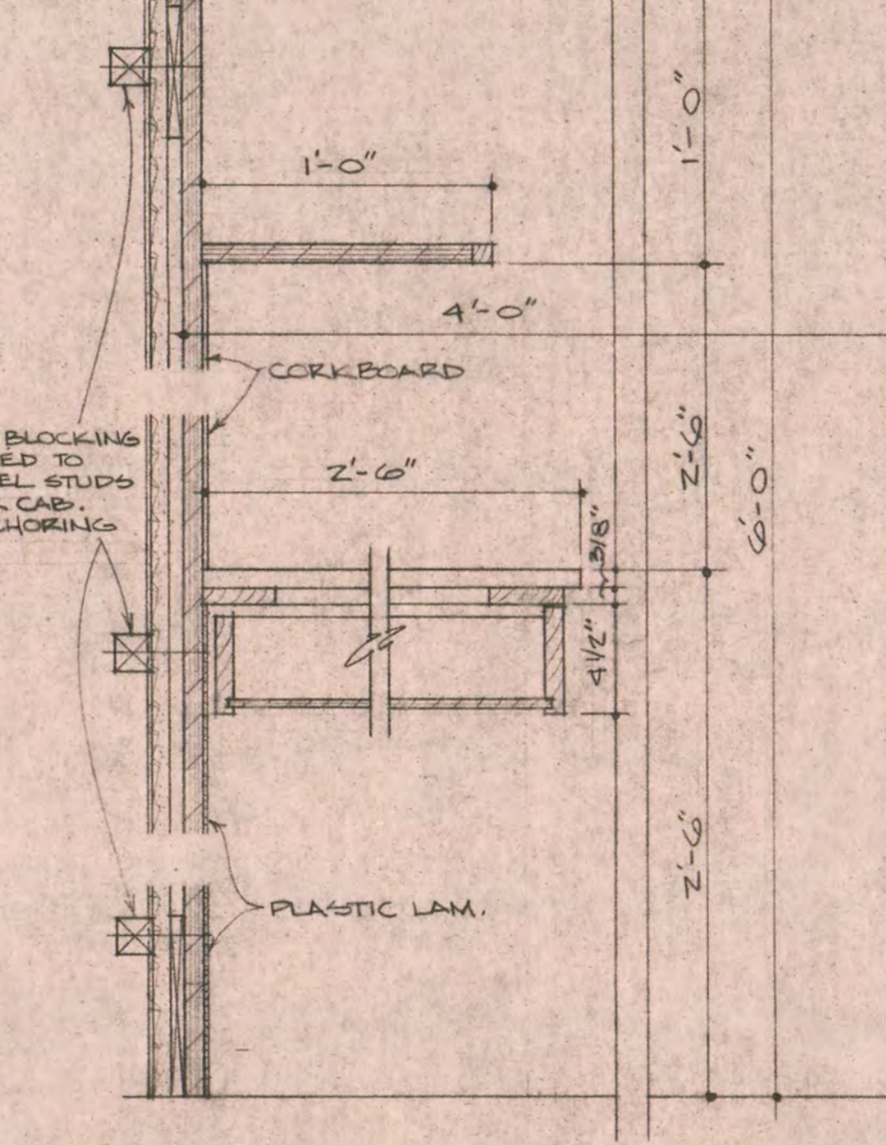
14 SECTION @ KNEE SPACE
20 1/2" = 1'-0"



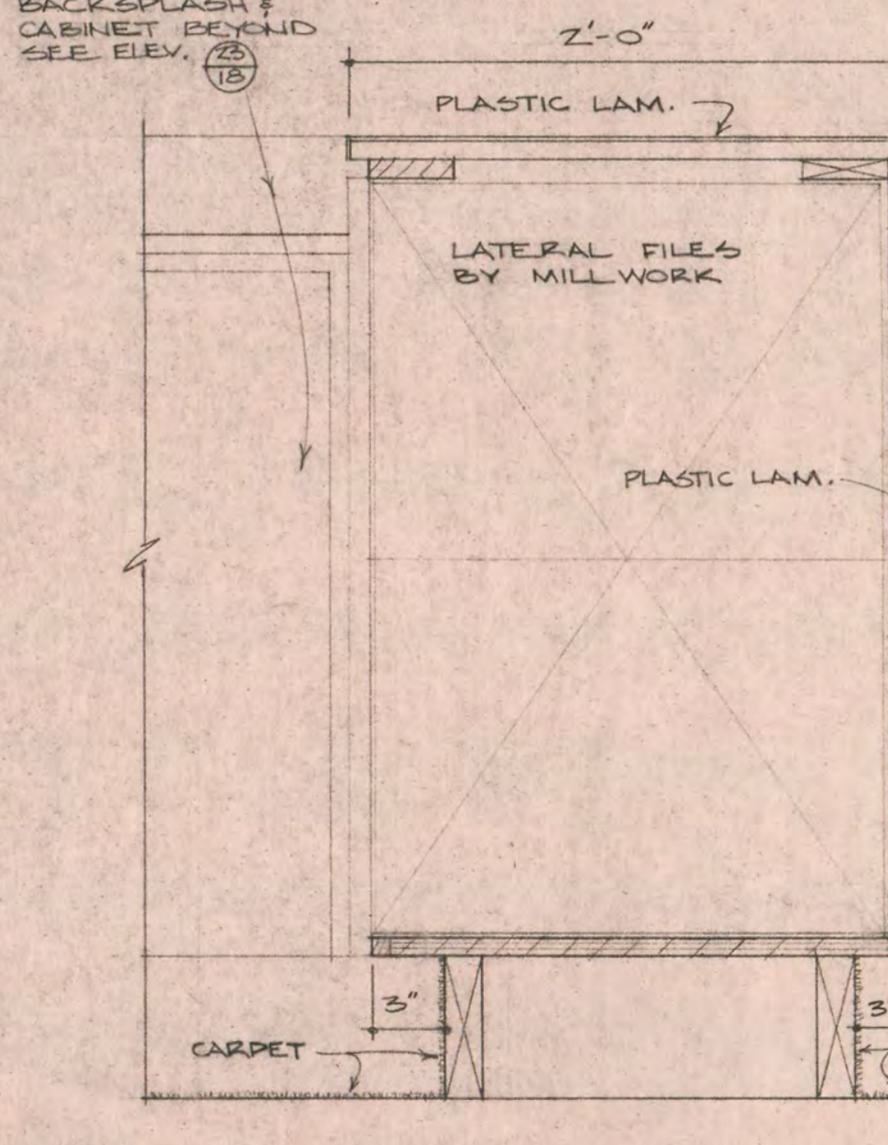
15 WALL CABINET RM. A16
20 1/2" = 1'-0"



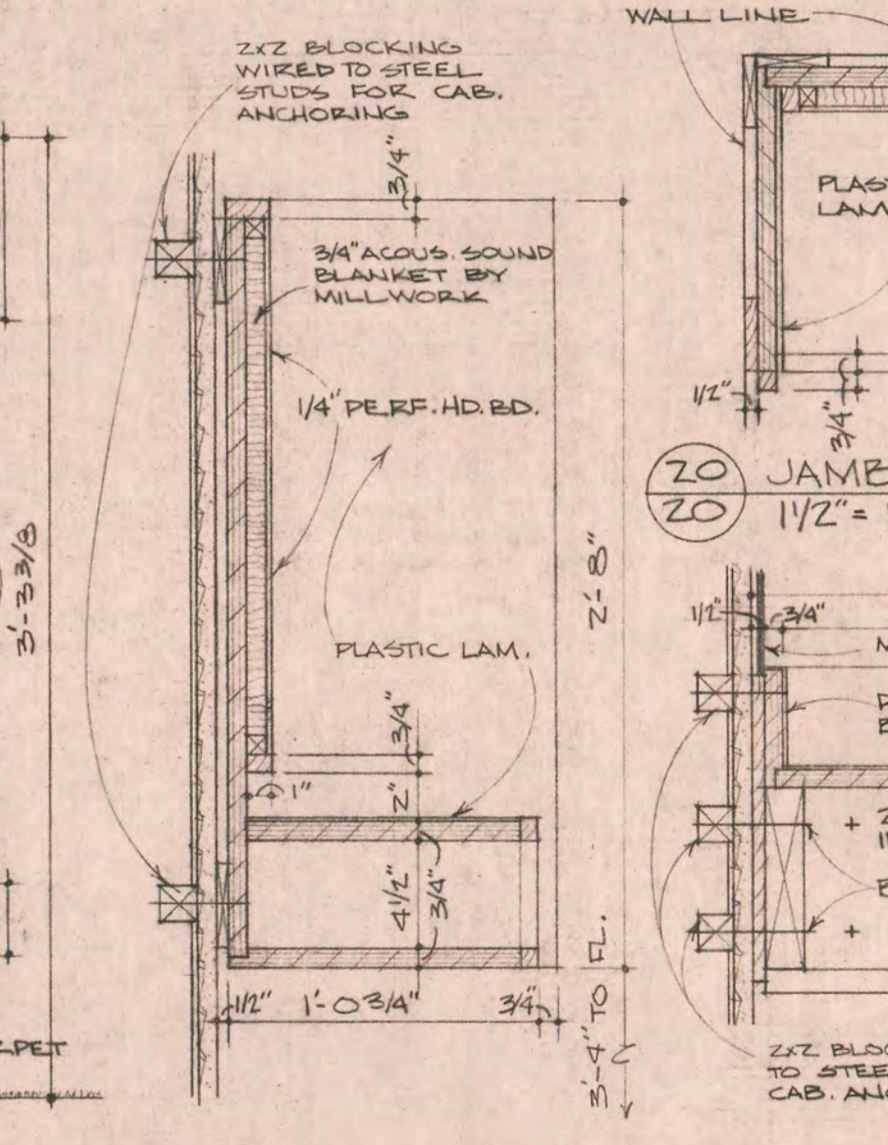
16 WORKROOM A127
20 1/2" = 1'-0"



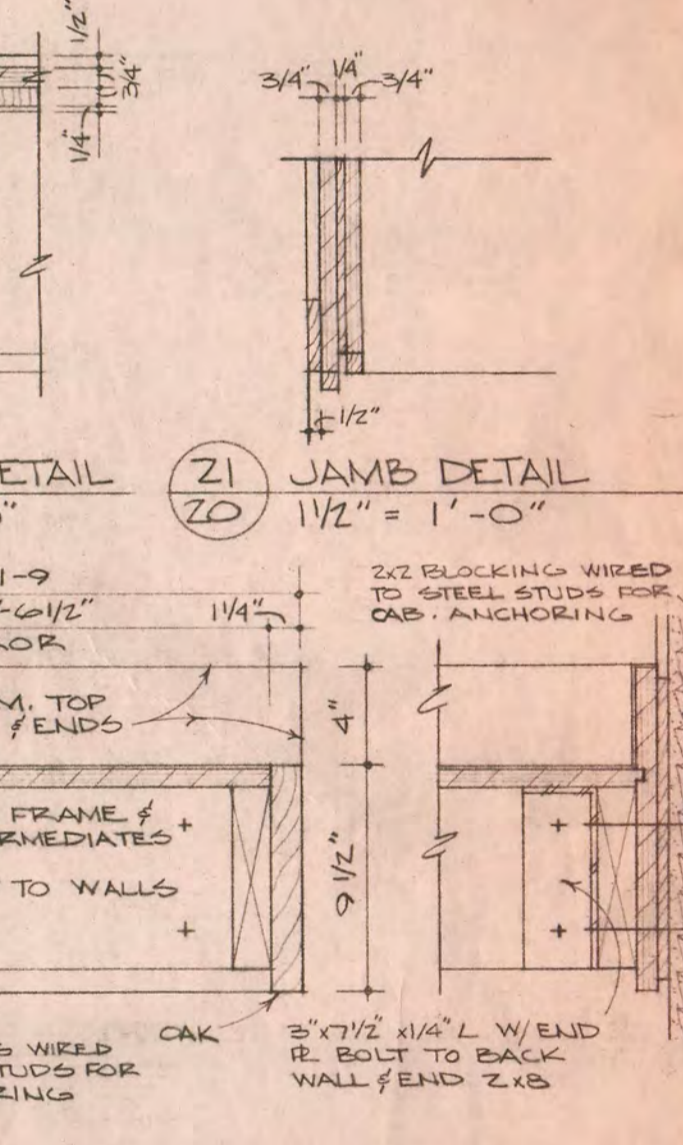
17 SECTION @ TYP. CARREL
20 1/2" = 1'-0"



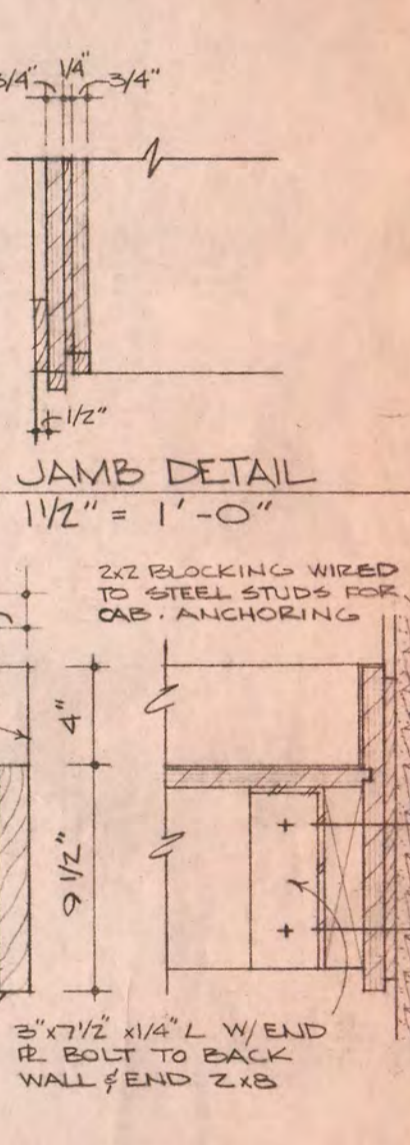
18 SECTION @ RECEPTION COUNTER
20 1/2" = 1'-0"



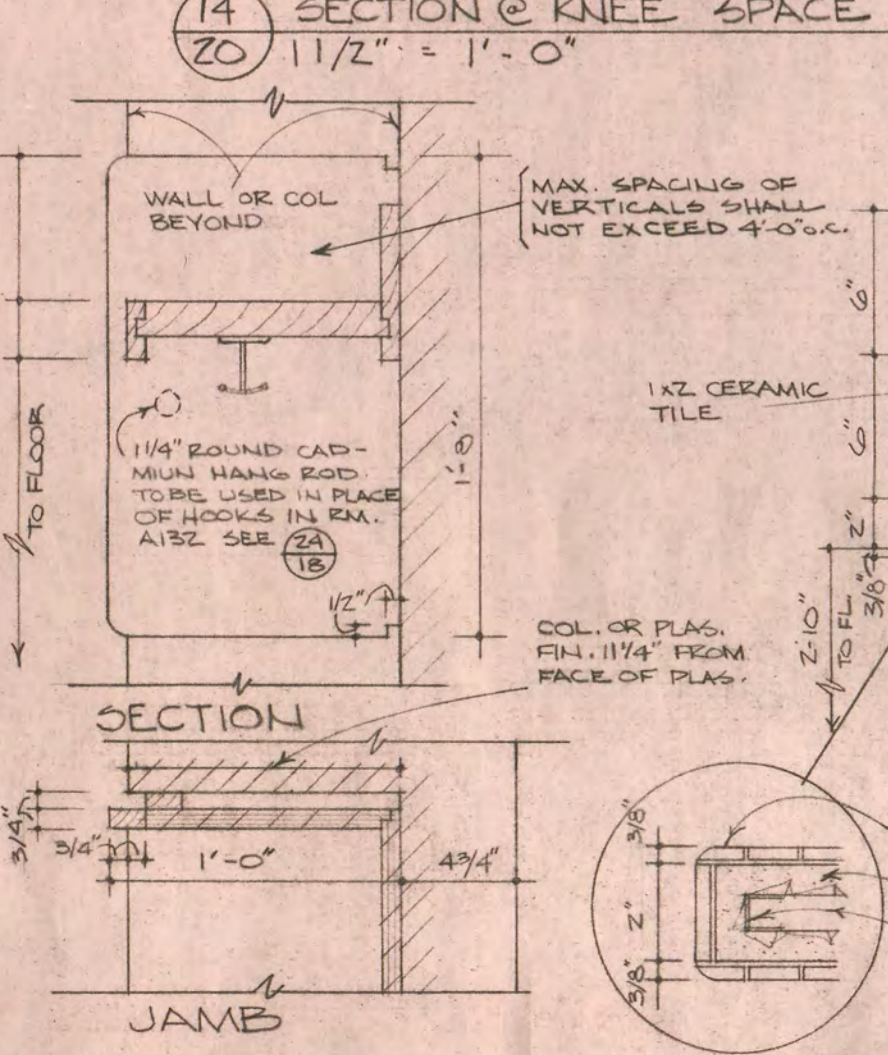
19 SEC. TEL. BOOTH
20 1/2" = 1'-0"



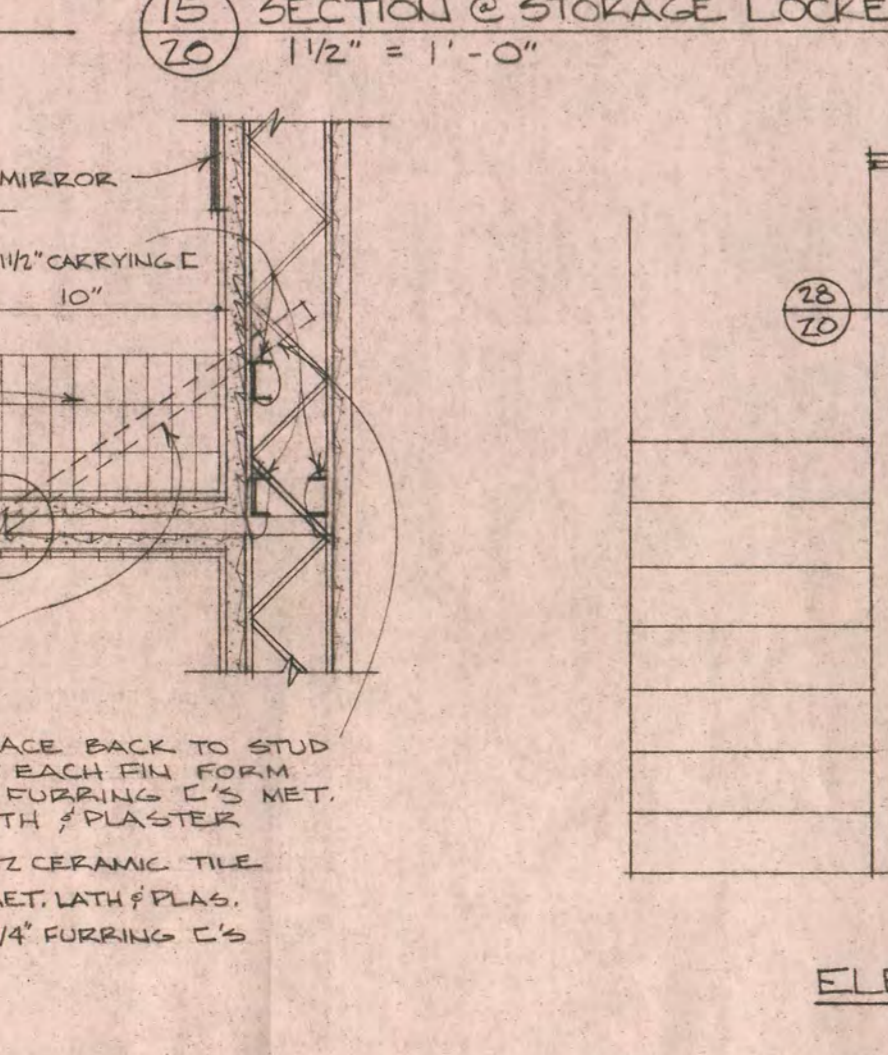
22 COUNTER DETAIL
20 1/2" = 1'-0"



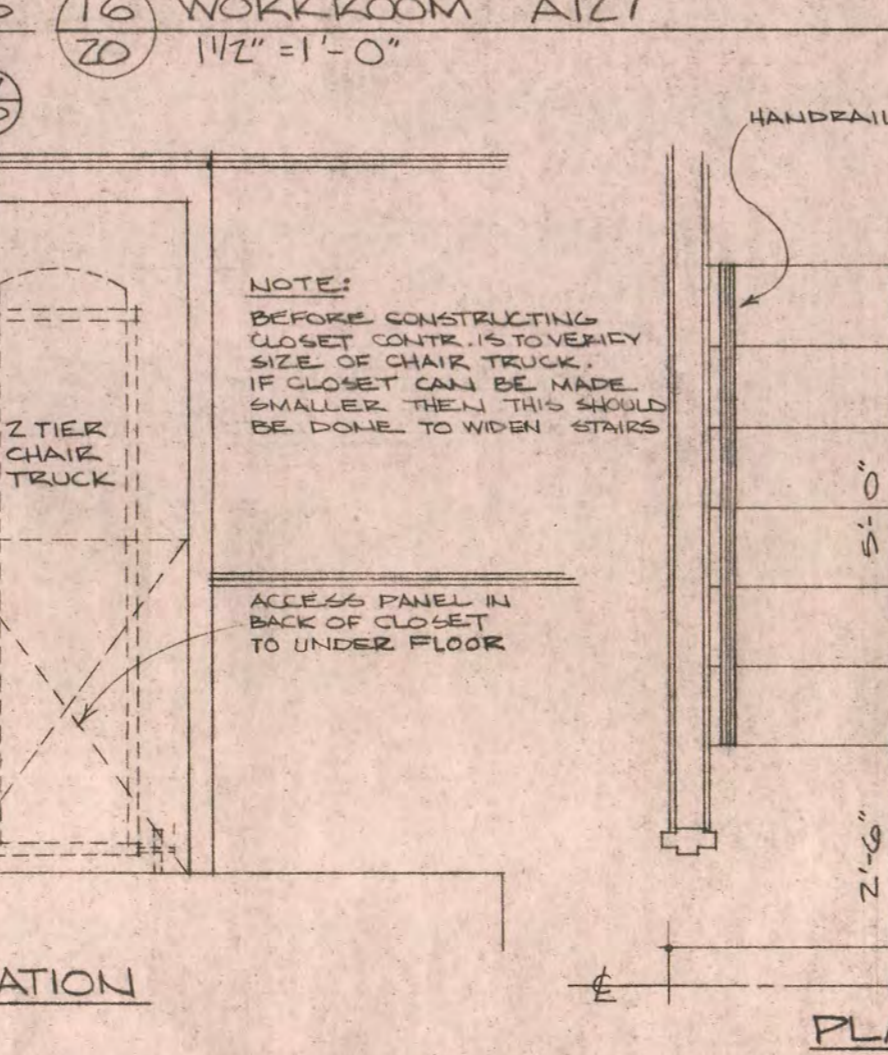
23 END @ WALL
20 1/2" = 1'-0"



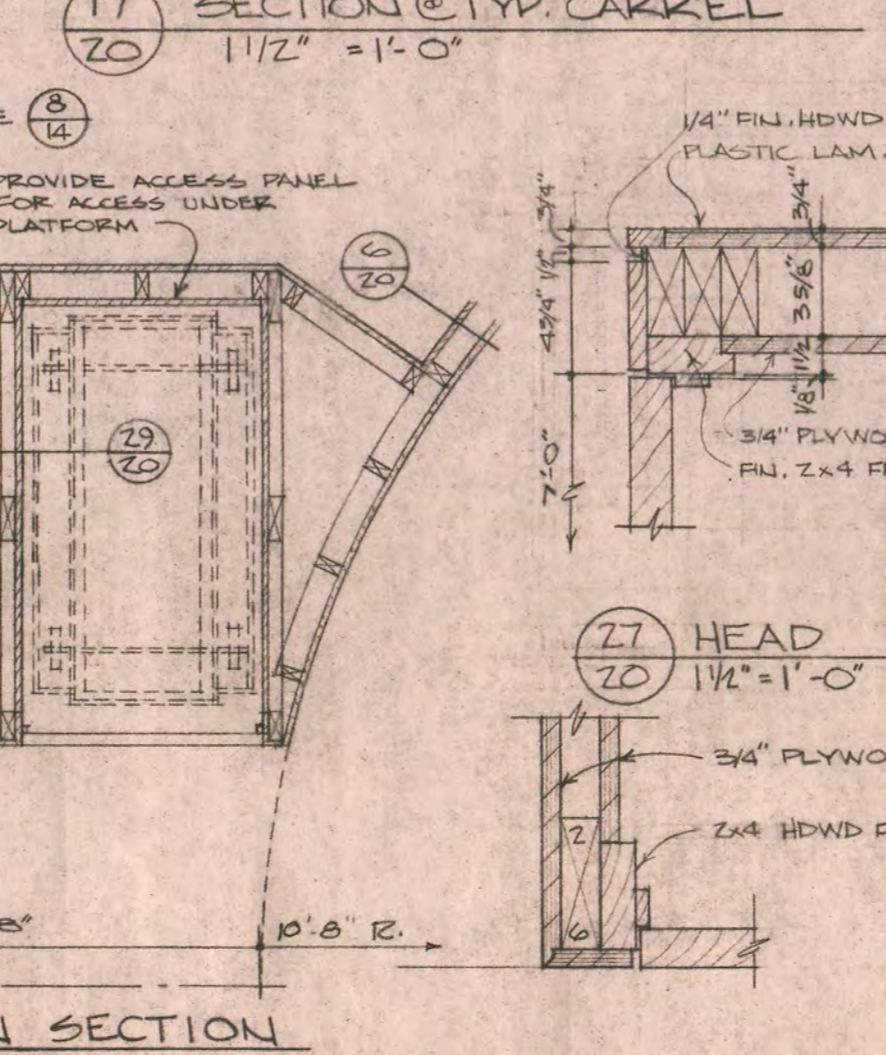
24 STUDENT WARDROBE
20 1/2" = 1'-0"



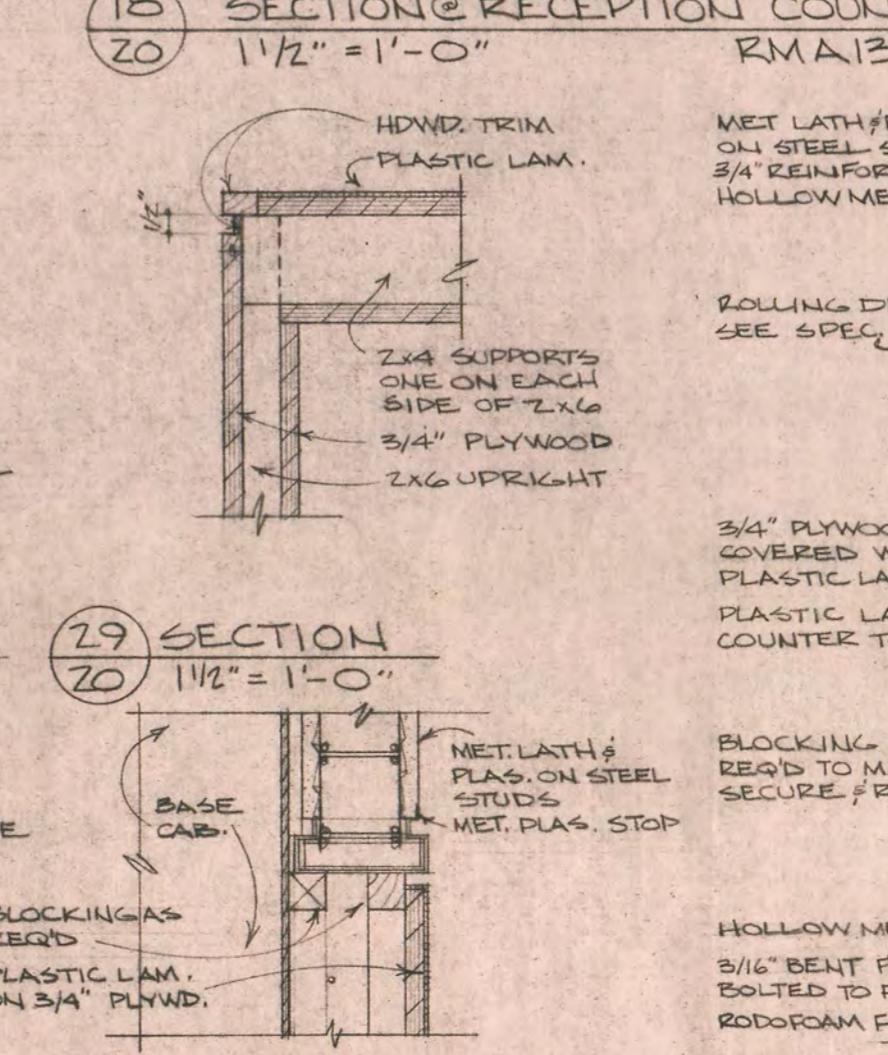
25 BOOK SHELF
20 1/2" = 1'-0"



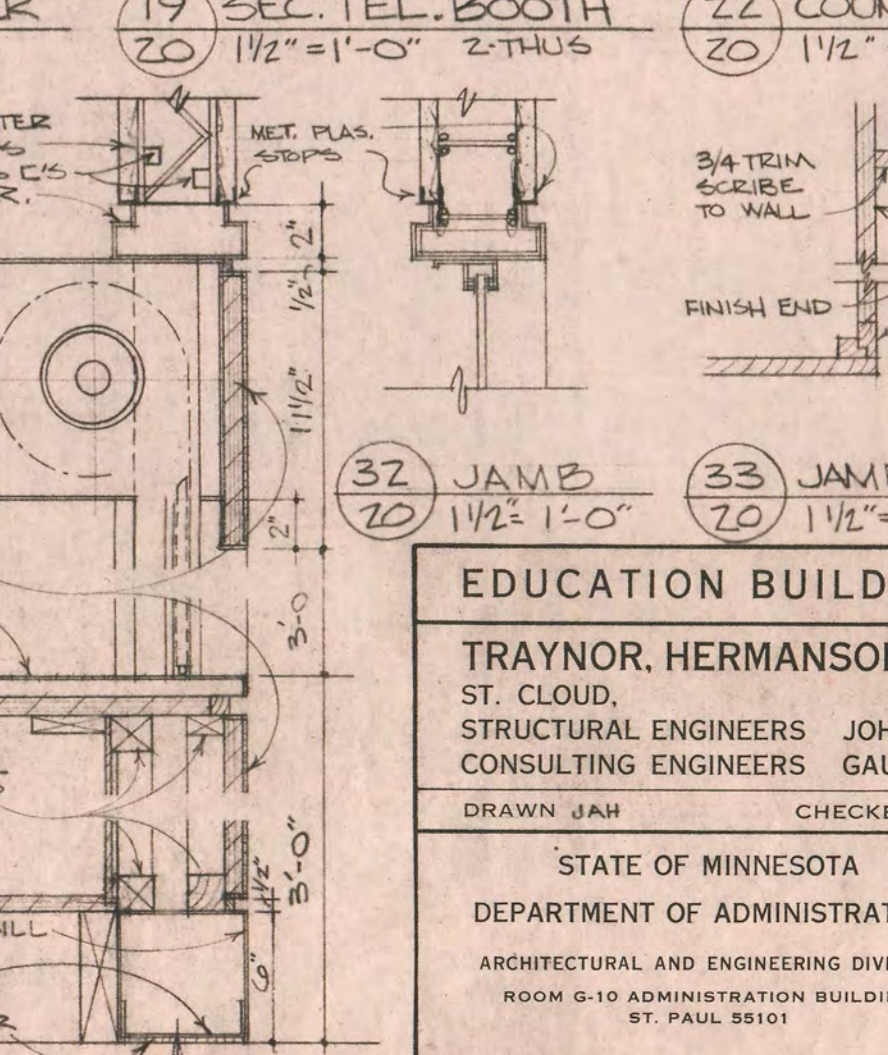
26 CLOSET FOR CHAIR STORAGE TRUCK
20 1/2" = 1'-0"



28 JAMB
20 1/2" = 1'-0"



30 JAMB @ BASE
20 1/2" = 1'-0"



31 SECTION @ COUNTER DOOR
20 1/2" = 1'-0"

EDUCATION BUILDING ST. CLOUD STATE COLLEGE

TRAYNOR, HERMANSON & HAHN ARCHITECTS INC. MINNESOTA
ST. CLOUD, MINN. JOHNSTON & SAHLMAN, INC. MPLS., MINN.
CONSULTING ENGINEERS GAUSMAN & MOORE, INC. ST. PAUL, MINN.

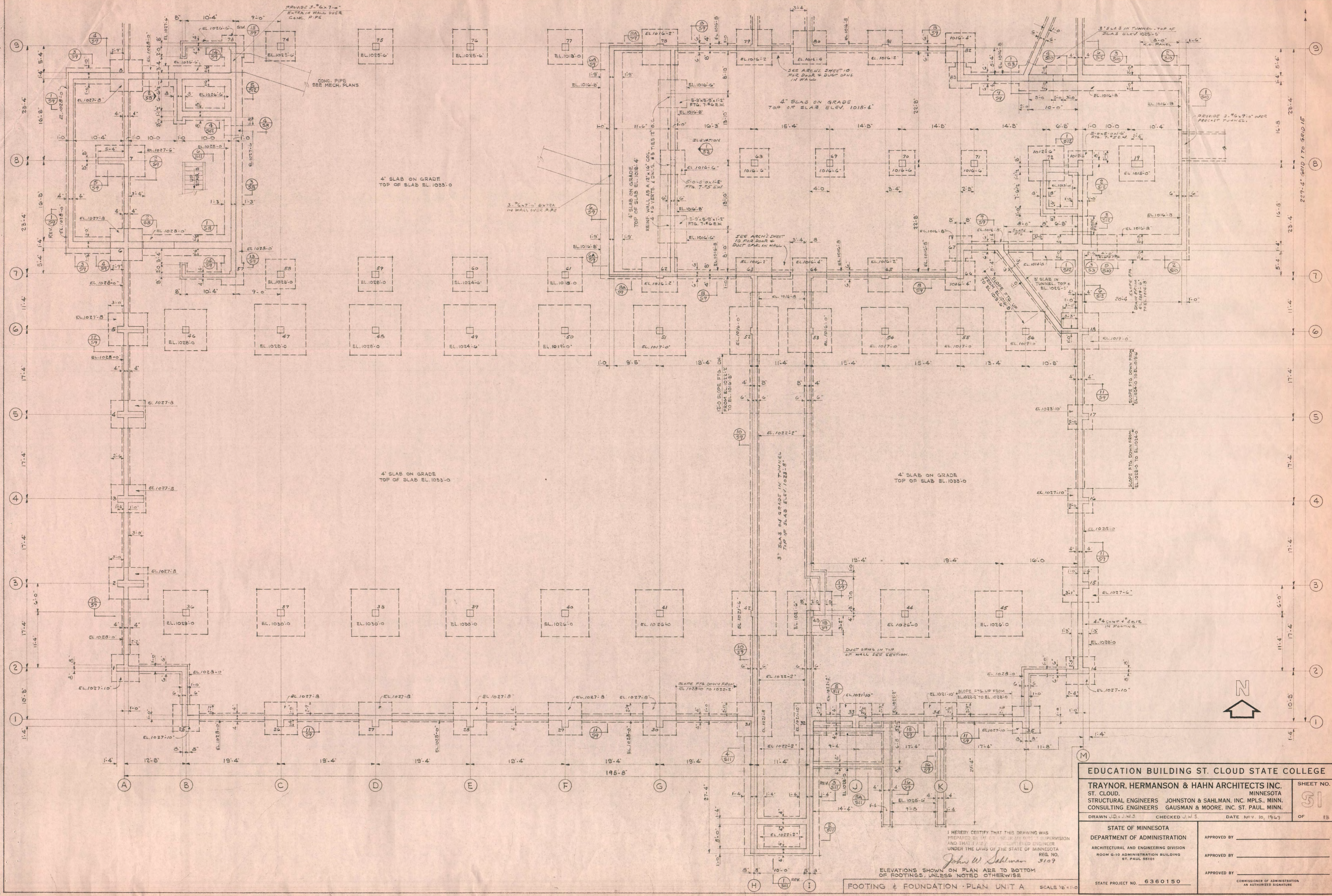
DRAWN JAH CHECKED FVT DATE NOV. 10, 1969

STATE OF MINNESOTA
DEPARTMENT OF ADMINISTRATION
ARCHITECTURAL AND ENGINEERING DIVISION
ROOM 6-10 ADMINISTRATION BUILDING
ST. PAUL 55101

SHEET NO. **20** OF 21

APPROVED BY _____
APPROVED BY _____
APPROVED BY _____

STATE PROJECT NO. 6360150 COMMISSIONER OF ADMINISTRATION
AN AUTHORIZED SIGNATURE



EDUCATION BUILDING ST. CLOUD STATE COLLEGE

TRAYNOR, HERMANSON & HAHN ARCHITECTS INC.
 ST. CLOUD, MINNESOTA
 STRUCTURAL ENGINEERS JOHNSTON & SAHLMAN, INC. MPLS., MINN.
 CONSULTING ENGINEERS GAUSMAN & MOORE, INC. ST. PAUL, MINN.

DRAWN J.D. J.W.S. CHECKED J.W.S. DATE NOV. 10, 1967 OF 15

STATE OF MINNESOTA
 DEPARTMENT OF ADMINISTRATION
 ARCHITECTURAL AND ENGINEERING DIVISION
 ROOM 6-10 ADMINISTRATION BUILDING
 ST. PAUL 55101

APPROVED BY _____
 APPROVED BY _____
 APPROVED BY _____

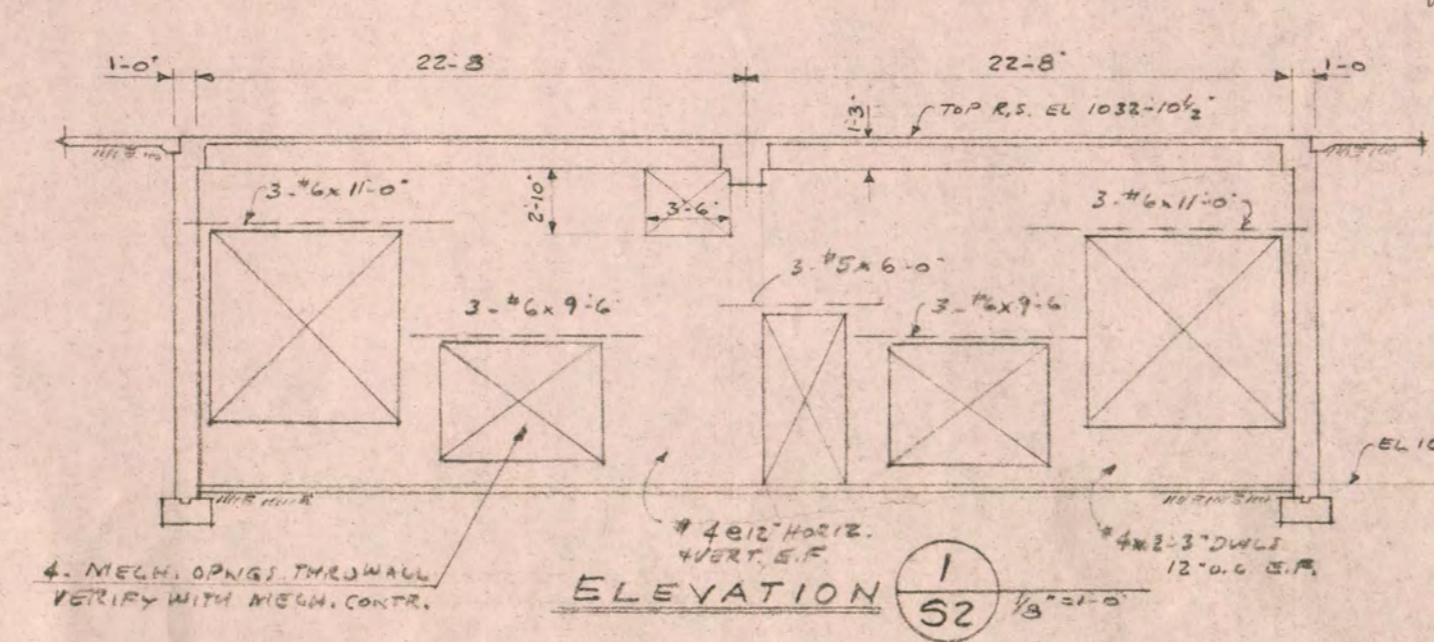
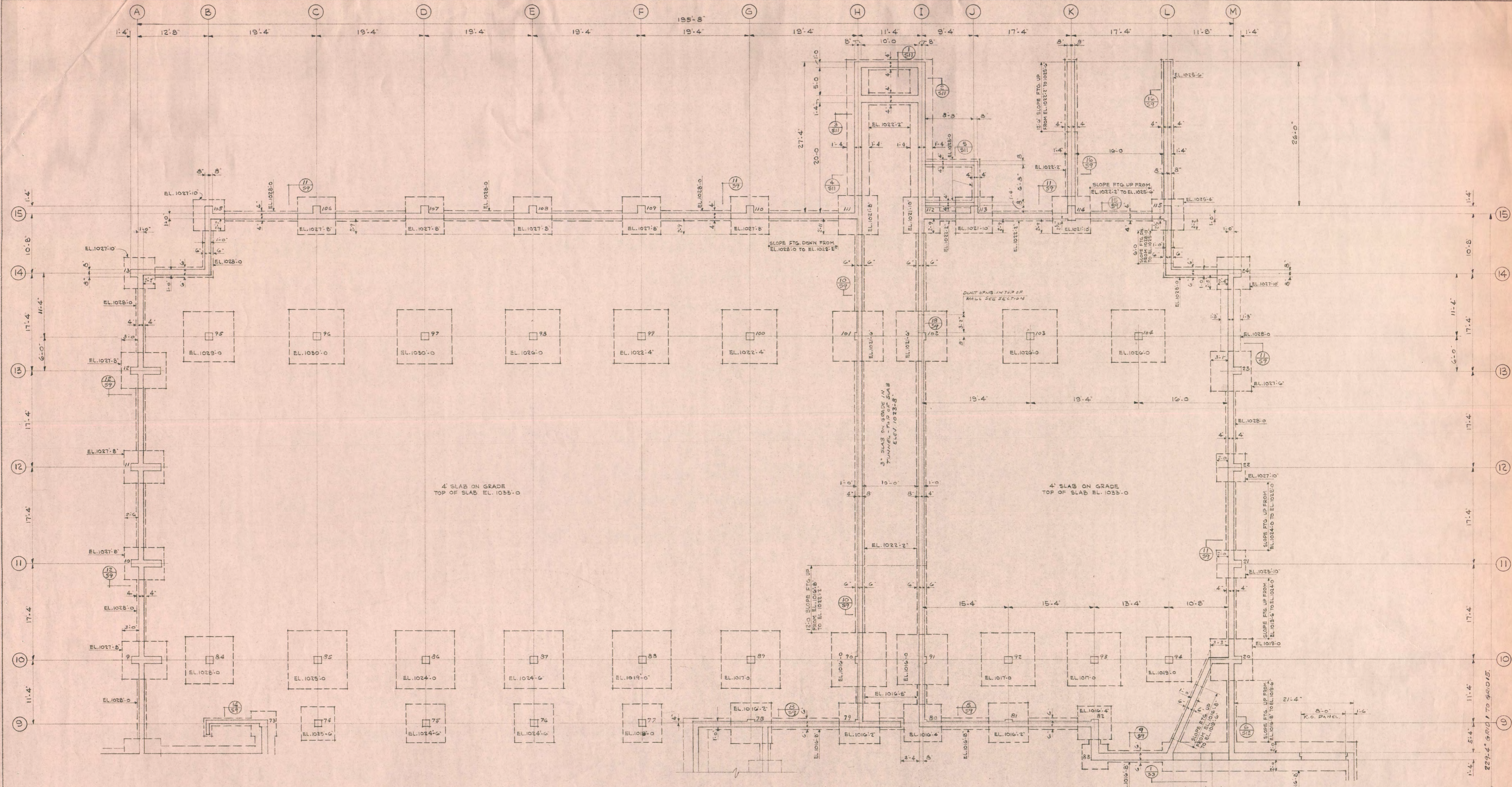
COMMISSIONER OF ADMINISTRATION
 AN AUTHORIZED SIGNATURE

FOOTING & FOUNDATION PLAN UNIT A SCALE 1/8" = 1'-0"

I HEREBY CERTIFY THAT THIS DRAWING WAS
 PREPARED BY ME OR UNDER MY SUPERVISION
 AND THAT I AM A REGISTERED ENGINEER
 UNDER THE LAWS OF THE STATE OF MINNESOTA
 REG. NO. 3109

John W. Sahlman

ELEVATIONS SHOWN ON PLAN ARE TO BOTTOM
 OF FOOTINGS, UNLESS NOTED OTHERWISE



- GENERAL NOTES**
- DESIGN LIVE LOADS - ROOF 40 P.S.F.
 - DESIGN LIVE LOADS - FLOORS 100 P.S.F.
 - ASSUMED SOIL BEARING 3000 P.S.F.
 - ALL FOOTINGS TO BE PLACED ON UNDISTURBED SOIL.
 - THICKEN SLABS ON GRADE TO 8" x 16" WIDE UNDER 6" x 8" PARTITIONS.
 - DEPRESS SLABS ON GRADE AS REQ. FOR TOPPING, ETC. SEE ARCH. DWGS.
 - CONSTRUCTION JOINTS TO BE MADE AT CENTER LINE OF SPAN OF SLABS, JOISTS AND BEAMS.
 - PROVIDE KEYS AT ALL CONSTRUCTION JOINTS, ALLOWING REINFORCING TO RUN THRU.
 - BOX-OUT CONCRETE WALLS FOR A MIN. OF 8" BEARING FOR BEAMS, FULL DEPTH OF BEAM.
 - STEP FOOTINGS OF BLOCK WALL CONSTR. 8" VERT. x 14" HORIZ. UNLESS OTHERWISE NOTED.
 - ALL COLUMN FOOTINGS ARE CENTERED ON COLUMN CENTER LINES UNLESS OTHERWISE NOTED.
 - DO NOT BACKFILL AGAINST FOUNDATION WALLS UNTIL SLABS OF FLOORS STARTING TOP & BOTTOM OF WALLS ARE IN PLACE.
 - PIPE TUNNEL WALLS TO BE ADEQUATELY BRACED BEFORE BACKFILLING.
 - VERIFY ALL EXISTING CONDITIONS AND DIMENSIONS IN FIELD.
 - VERIFY SIZE AND LOCATIONS OF ALL OPENINGS WITH MECHANICAL CONTRACTOR.
 - ALL ANCHORS, E.S. L'S, ETC. EMBEDDED IN PLACE CONC. TO BE FURNISHED BY STRUCT. STEEL FABR.
 - NEOPRENE PADS LOOSE R'S & ANCHOR PLATES IN DOUBLE TERS. TO BE FURNISHED BY DOUGLASS TREE FABR.
 - ALL BEAM BARS TO BE LIMITED TO A MAXIMUM OF 2 SPANS WITH CONSTRUCTION JOINTS AT 1/2 SPAN.
 - ROOF RAFTERS, BEAMS TO BE RAISED WITH LIGHT WEIGHT AGGREGATE CONC. 8" SPS.

- CONCRETE NOTES**
- ALL CONC. TO BE 3750 LBS. PER SQ. IN. COMPRESSION IN 28 DAYS UNLESS OTHERWISE NOTED. ITES TO BE 3000 P.S.F.
 - ALL REINF. TO BE DETAILED AND PLACED ACCORDING TO THE LATEST A.C.I. CODE AND MANUAL OF STANDARD PRACTICE.
 - REINFORCING BARS TO BE GRADE 60 DEFORMED, NEW BILLET STEEL, MEETING LATEST A.S.T.M. DESIGNATION A615 UNLESS OTHERWISE NOTED.
 - PROVIDE REED. SPACERS AND SUPPORTS FOR ALL REINF. INCLUDING TEMP. BARS. REINF. TO BE SECURELY TIED IN PLACE BEFORE POURING CONCRETE.
 - PROVIDE 40 DIA. (EACH LEG) CORNER BARS AT ALL CORNERS, WALL INTERSECTIONS, CONC. CAPS, AND LINTEL BLOCKS, SAME SIZE AND SPACING AS HORIZ. REINF.
 - PROVIDE 2-#5 EXTRA 4 SIDES OF OPENINGS IN WALLS AND SLABS, WITH 2" EXTENSION BEYOND EDGES OF OPNG. UNLESS OTHERWISE NOTED.
 - LAP ALL SPLICES 24" BAR DIA. BUT NOT LESS THAN 12" UNLESS OTHERWISE NOTED.
 - HOOK ALL SLABS, BEAM & JOIST TOP & BENT BARS AT DISCONTINUOUS ENDS. EXTEND BENT BARS OF SLABS, JOISTS AND BEAMS 4" GREATER "L" INTO ADJACENT SPANS.
 - STIRRUPS TO HAVE 2-#3 SPACERS FOR LENGTH OF STIRRUP SPACING.
 - EXTEND BOTT. BARS A MINIMUM OF 6" INTO SUPPORT OR HOOK.
 - PROVIDE SHOP OFFSET BENDS IN ALL COLUMN VERT. REINF. AT SPLICES ACCORDING TO A.C.I. CODE.
 - PROVIDE 4-#5 WELDED WIRE MESH FOR SLABS ON GRADE.
 - CONCRETE COVER FOR REINFORCING TO BE AS PER LATEST A.C.I. CODE.
 - PROVIDE 1-#5 T. & B. CONT. IN BRG. JOISTS-LAP 20" AT SPLICES.
 - PROVIDE 2-#5 CONTINUOUS IN ALL WALL FOOTINGS UNLESS OTHERWISE DETAILED.

ELEVATIONS SHOWN ON PLAN ARE TO BOTTOM OF FOOTINGS, UNLESS NOTED OTHERWISE

FOOTING & FOUNDATION PLAN UNIT B SCALE 1/8" = 1'-0"

N

EDUCATION BUILDING ST. CLOUD STATE COLLEGE

TRAYNOR, HERMANSON & HAHN ARCHITECTS INC.
ST. CLOUD, MINNESOTA
STRUCTURAL ENGINEERS JOHNSTON & SAHLMAN, INC. MPLS., MINN.
CONSULTING ENGINEERS GAUSMAN & MOORE, INC. ST. PAUL, MINN.

DRAWN J.D.W.S. CHECKED J.W.S. DATE NOV. 10, 1969

STATE OF MINNESOTA
DEPARTMENT OF ADMINISTRATION
ARCHITECTURAL AND ENGINEERING DIVISION
ROOM G-10 ADMINISTRATION BUILDING
ST. PAUL 55101

APPROVED BY _____
APPROVED BY _____
APPROVED BY _____

STATE PROJECT NO. 6360150

COMMISSIONER OF ADMINISTRATION
AN AUTHORIZED SIGNATURE

SHEET NO. 32 OF 13

