

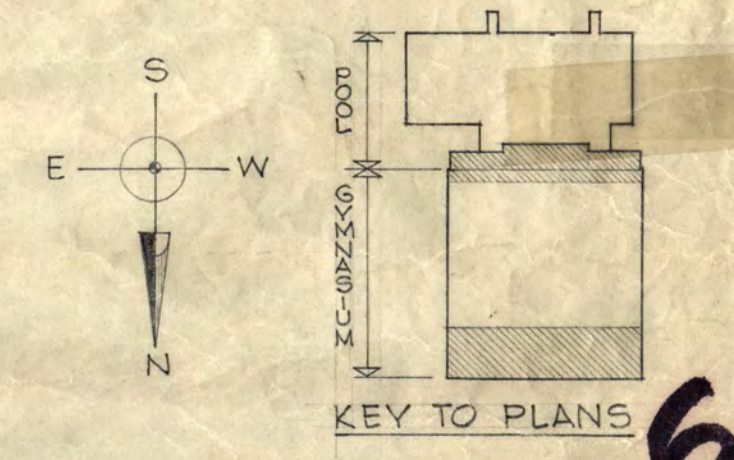
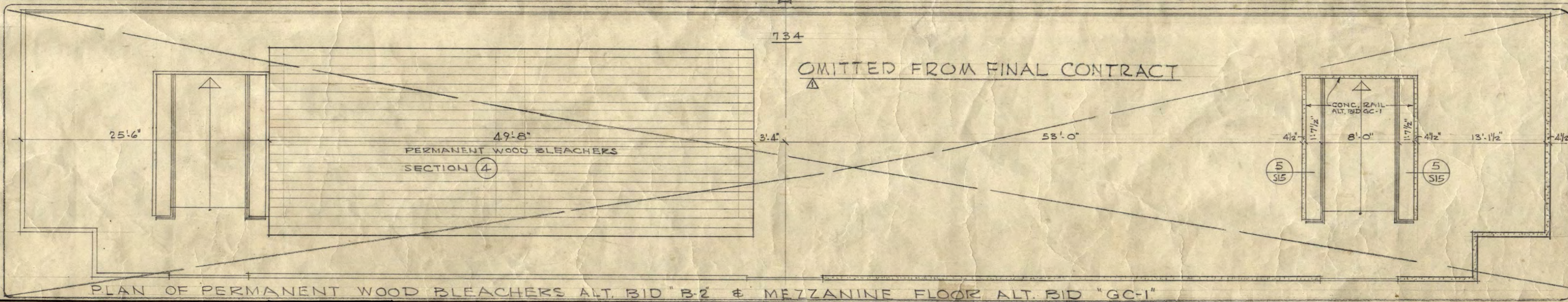
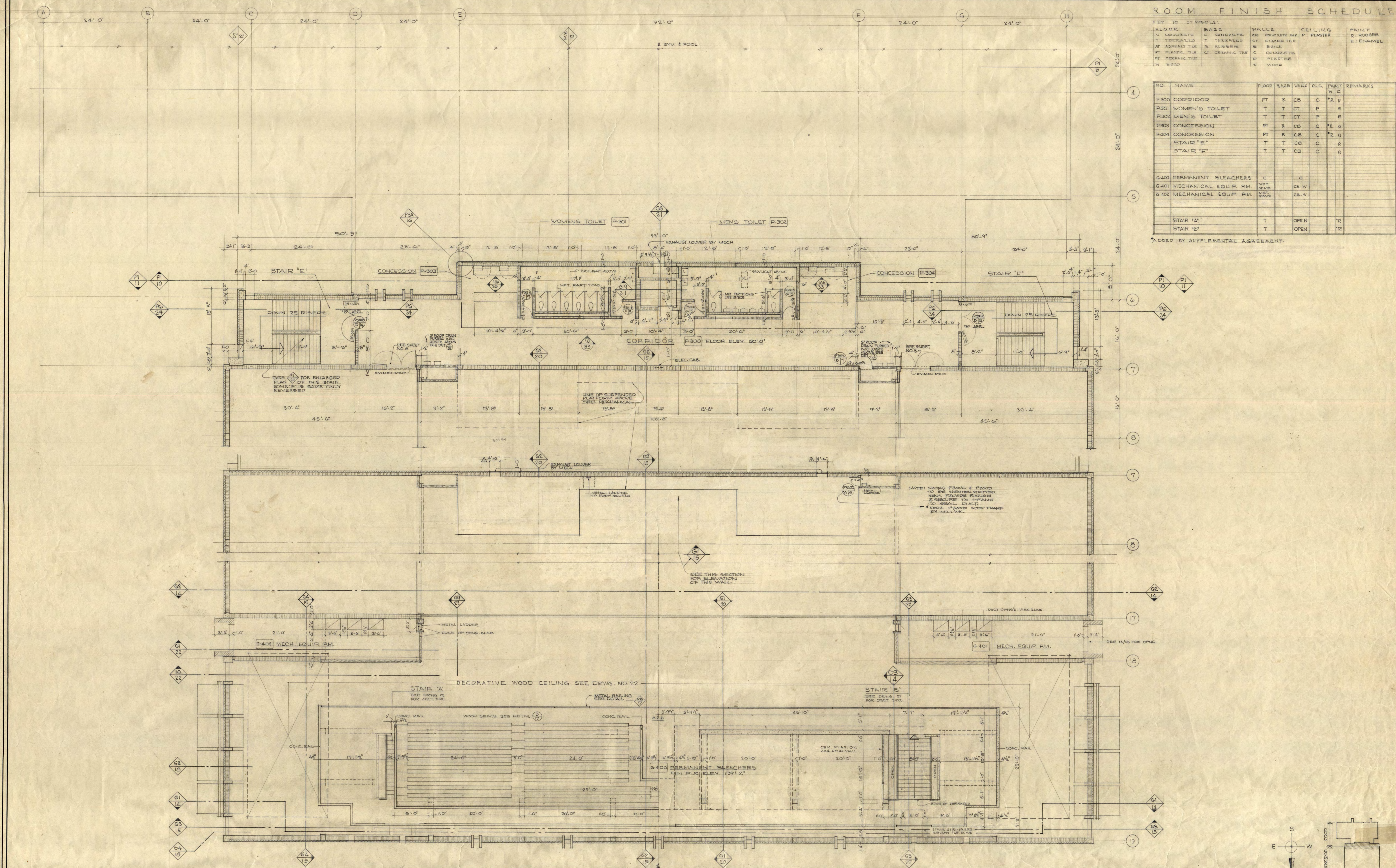
ROOM FINISH SCHEDULE

KEY TO SYMBOLS:

FLOOR	BASE	WALLS	CEILING	PAINT
C CONCRETE	C CONCRETE	CB CONCRETE BRK	P PLASTER	R RUBBER
T TERRAZZO	T TERRAZZO	CT CERAMIC TILE		E ENAMEL
AT ASPHALT TILE	R RUBBER	B BRICK		
PT PLASTIC TILE	CT CERAMIC TILE	C CONCRETE		
CE CERAMIC TILE	P PLASTER	W WOOD		

NO.	NAME	FLOOR	BASE	WALL	CLG.	PAINT	REMARKS
P-300	CORRIDOR	PT	R	CB	C	*R P	
P-301	WOMEN'S TOILET	T	T	CT	P	E	
P-302	MEN'S TOILET	T	T	CT	P	E	
P-303	CONCESSION	PT	R	CB	C	*R R	
P-304	CONCESSION	PT	R	CB	C	*R R	
	STAIR "E"	T	T	CB	C	R	
	STAIR "F"	T	T	CB	C	R	
G-400	PERMANENT BLEACHERS	C			C		
G-401	MECHANICAL EQUIP. RM.	MET. GRATE		CB-W			
G-402	MECHANICAL EQUIP. RM.	MET. GRATE		CB-W			
	STAIR "M"	T		OPEN		*R	
	STAIR "B"	T		OPEN		*R	

*ADDED BY SUPPLEMENTAL AGREEMENT.



INSTRUCTIONAL BUILDING FOR PHYSICAL EDUCATION
 ST. CLOUD STATE COLLEGE
 DEPARTMENT OF ADMINISTRATION
 ROOM 120 STATE CAPITOL BUILDING
 ARCHITECTURAL AND ENGINEERING DIVISION
 A. J. NELSON, STATE ARCHITECT

STATE OF MINNESOTA
 ST. PAUL, MINNESOTA

APPROVED BY: [Signature]
 STATE COLLEGE BOARD
 APPROVED BY: [Signature]
 COMMISSIONER OF ADMINISTRATION
 AN AUTHORIZED SIGNATURE

MAIN FLOOR PLAN - POOL BALCONY PLAN

TRAYNOR AND HERMANSON ARCHITECTS ST. CLOUD
 STRUCTURAL ENGINEERS: JOHNSON & SAWYER MINNEAPOLIS, MINN.
 CONSULTING ENGINEERS: GARDNER & FURBER, INC. ST. PAUL, MINN.

DATE: 1-17-65
 DRAWN: LLW, TWS
 CHECKED: [Signature]

APPROVED BY: [Signature]
 TRAYNOR AND HERMANSON ARCHITECTS ST. CLOUD

SHEET ARCHITECTURAL
5
 OF 33
 STATE PROJECT NUMBER
 3425

SEE DRWG. NO. 3 FOR CONTINUATION OF THIS FLOOR

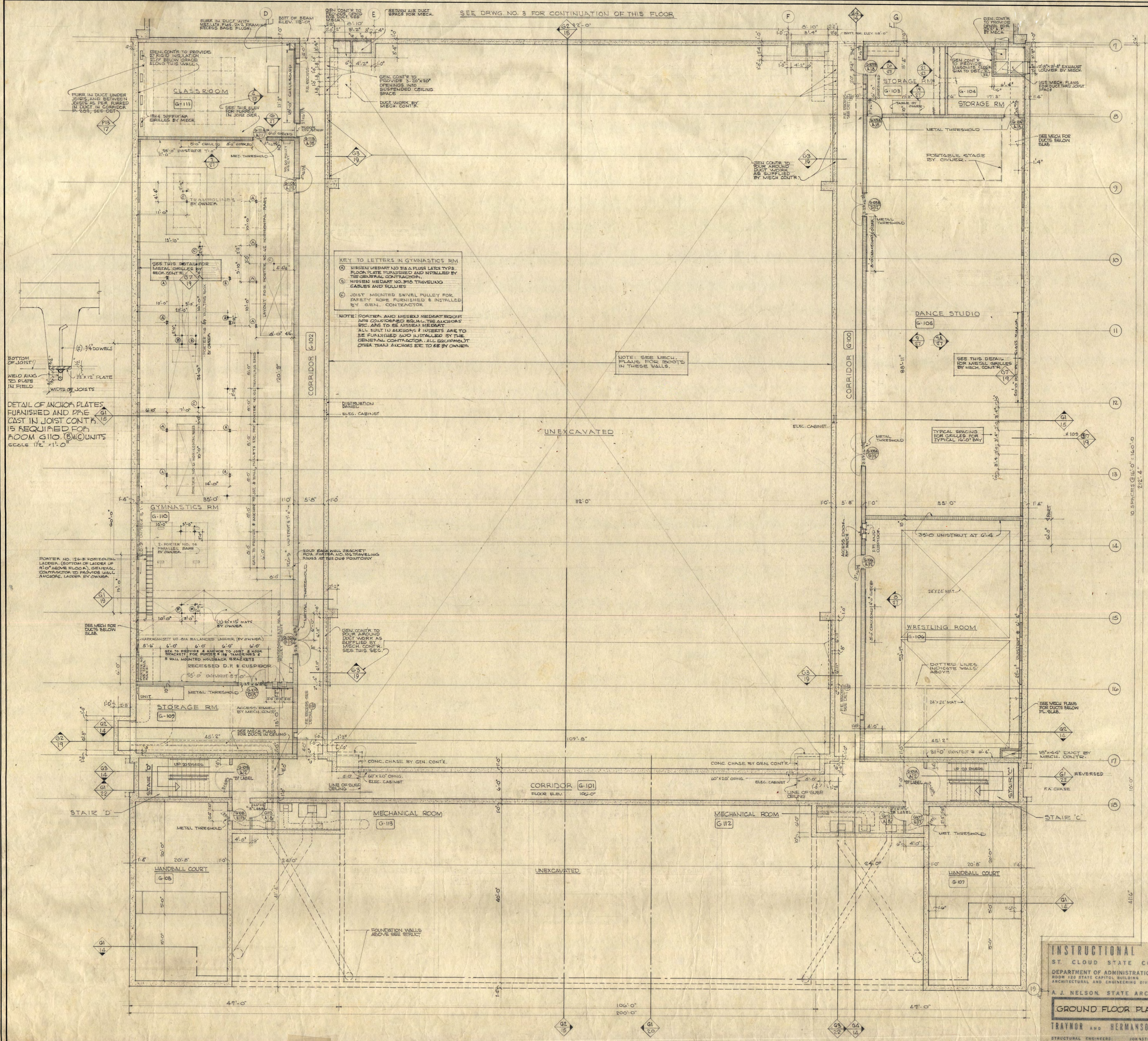
ROOM FINISH SCHEDULE

KEY TO SYMBOLS:

FLOOR	BASE	WALLS	CEILING	PAINT	REMARKS
C	C	CR	P	R	W.C.
T	T	ST	P	R	SUSPENDED
AT	R	B	P	R	PAINT PLASTER EYES SUSPENDED PER MIT
PT	R	C	P	R	SUSPENDED
CT	CT	C	P	R	
W	W	C	P	R	

NO.	NAME	FLOOR	BASE	WALLS	CLG.	PAINT	REMARKS
G-100	CORRIDOR	C	C	C-CB	P	R	SUSPENDED CELL.
G-101	"	C	C	C-CB	P	R	PAINT PLASTER EYES SUSPENDED PER MIT
G-102	"	C	C	C-CB	P	R	SUSPENDED
G-103	STORAGE ROOM	C	C	C-CB	P	R	
G-104	"	C	C	C-CB	P	R	
G-105	DANCE STUDIO	W	W	C-CB	P	R	
G-106	WRESTLING ROOM	W	W	C-CB	P	R	
G-107	HANDBALL COURT	W	W	C	P	R	SUSPENDED
G-108	HANDBALL COURT	W	W	C	P	R	"
G-109	STORAGE ROOM	C	C	C-CB	P	R	
G-110	GYMNASIUM ROOM	W	W	C-CB	P	R	"
G-111	CLASSROOM	C	C	C-CB	P	R	"
G-112	MECHANICAL ROOM	C	C	C	P	R	
G-113	MECHANICAL ROOM	C	C	C	P	R	
	STAIR 'C'	C	C	C-CB	P	R	
	STAIR 'D'	C	C	C-CB	P	R	

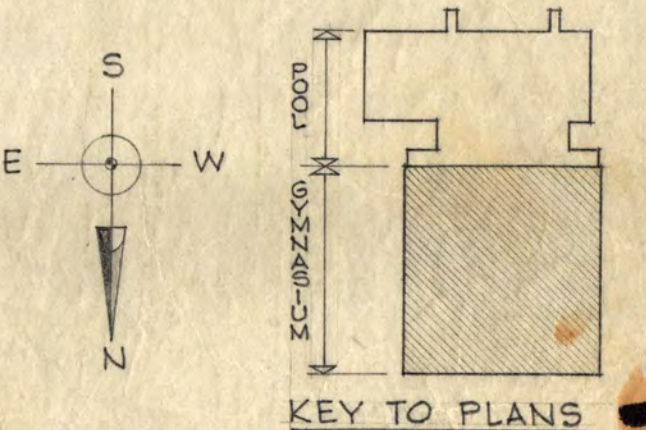
ADDED BY SUPPLEMENTAL AGREEMENT.



KEY TO LETTERS IN GYMNASIUM RM
 (A) MISCELLANEOUS NO. 216 PLATE TYPE FLOOR PLATE FURNISHED AND INSTALLED BY THE GENERAL CONTRACTOR.
 (B) MISCELLANEOUS NO. 216 TRAVELING CABLES AND ROLLIES.
 (C) JOIST MOUNTED SWIVEL PULLEY FOR PARALLEL BEAMS FURNISHED AND INSTALLED BY THE GENERAL CONTRACTOR. ALL EQUIPMENT OTHER THAN ANCHORS ETC. TO BE BY OWNER.
 NOTE: PORTER AND MISCELLANEOUS ROOMS ARE CONSIDERED EQUAL. THE ANCHORS ETC. ARE TO BE MISCELLANEOUS. ALL BUILT IN ANCHORS ARE TO BE FURNISHED AND INSTALLED BY THE GENERAL CONTRACTOR. ALL EQUIPMENT OTHER THAN ANCHORS ETC. TO BE BY OWNER.

NOTE: SEE MECH. PLANS FOR BOOTS IN THESE WALLS.

DETAIL OF ANCHOR PLATES FURNISHED AND PRE CAST IN JOIST CONT. IS REQUIRED FOR ROOM G-110. @ 1/2" UNITS SCALE 1/2" = 1'-0"



INSTRUCTIONAL BUILDING FOR PHYSICAL EDUCATION
 ST. CLOUD STATE COLLEGE
 DEPARTMENT OF ADMINISTRATION
 ROOM 120 STATE CAPITOL BUILDING
 ARCHITECTURAL AND ENGINEERING DIVISION
 ST. PAUL, MINNESOTA

STATE OF MINNESOTA
 ST. CLOUD, MINNESOTA

A. J. NELSON, STATE ARCHITECT

APPROVED BY: PRESIDENT BY CLOUD STATE COLLEGE
 APPROVED BY: STATE COLLEGE BOARD
 APPROVED BY: COMMISSIONER OF ADMINISTRATION
 AN AUTHORIZED SIGNATURE

DATE: 1-17-65

TRAYNOR AND HERMANSON ARCHITECTS ST. CLOUD

STRUCTURAL ENGINEERS: JOHNSON & CARLSON MINNEAPOLIS MINN.
 CONSULTING ENGINEERS: GAUBMAN & MOORE INC. ST. PAUL MINN.

GROUND FLOOR PLAN GYM

REVISIONS

STATE PROJECT NUMBER 3425

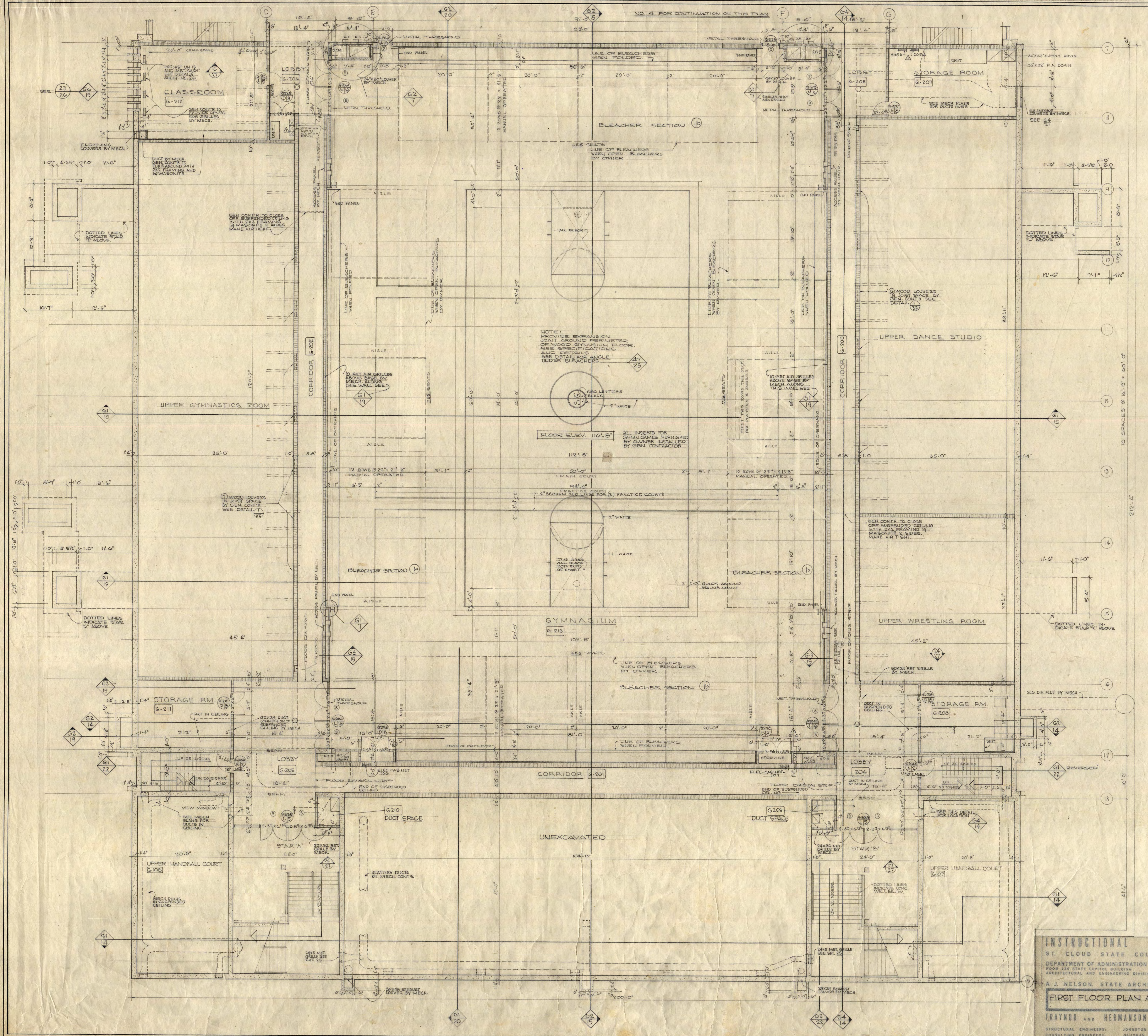
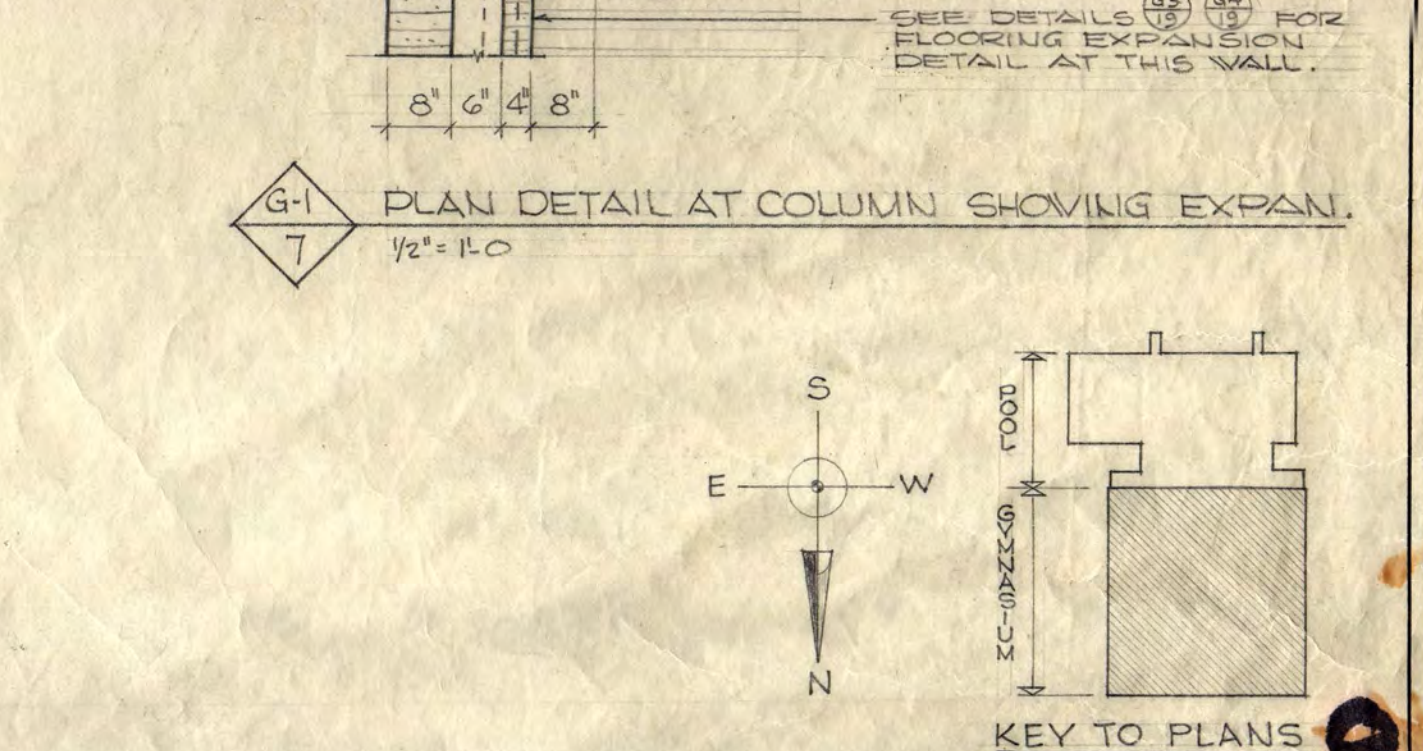
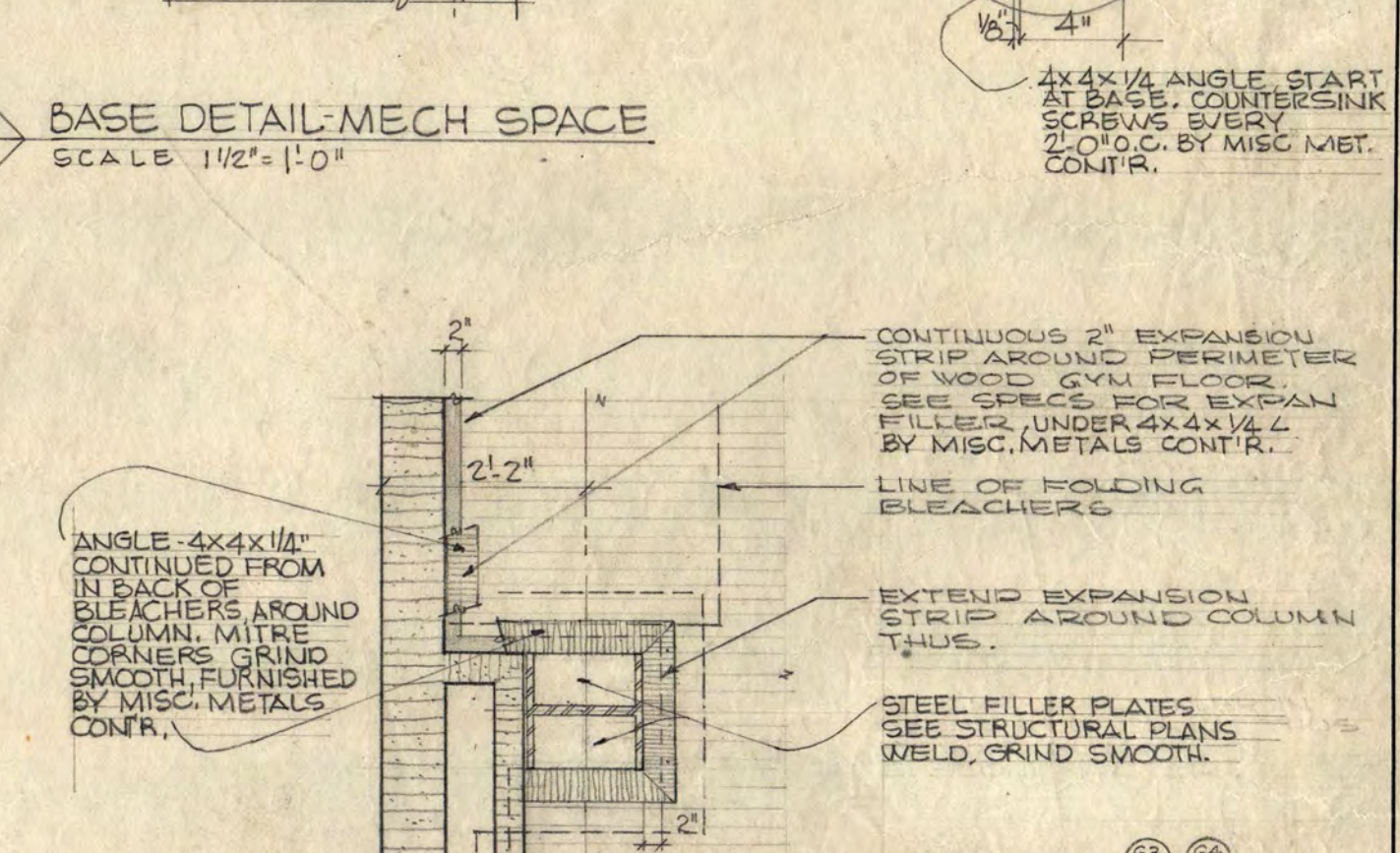
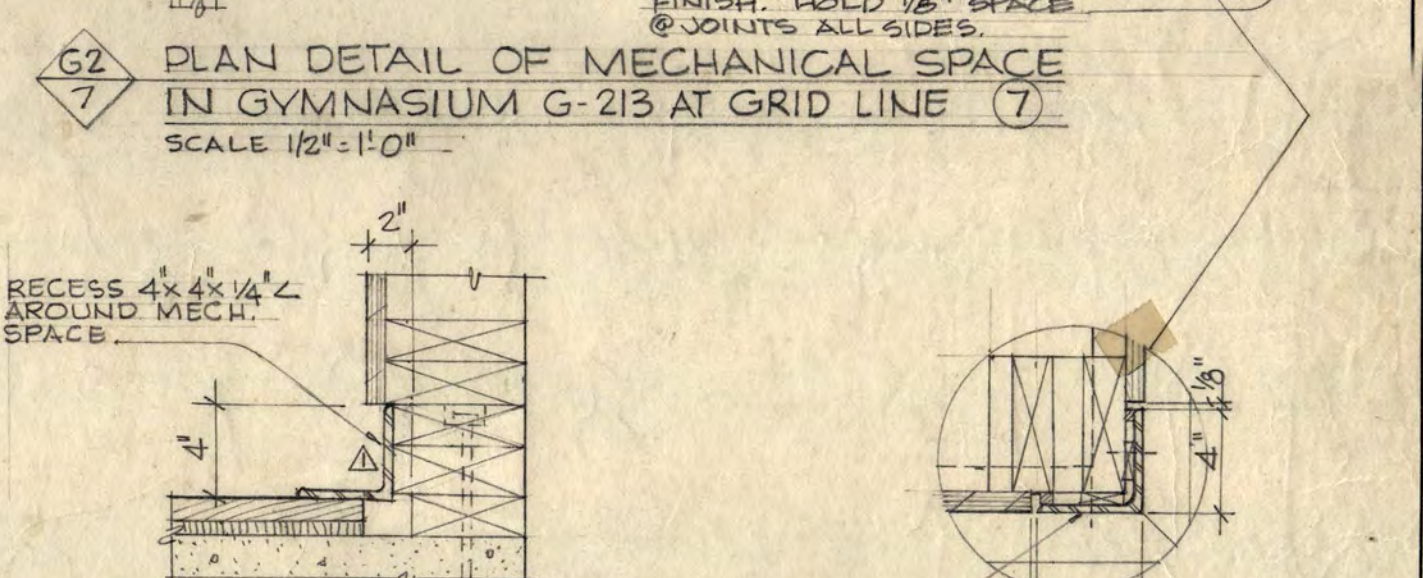
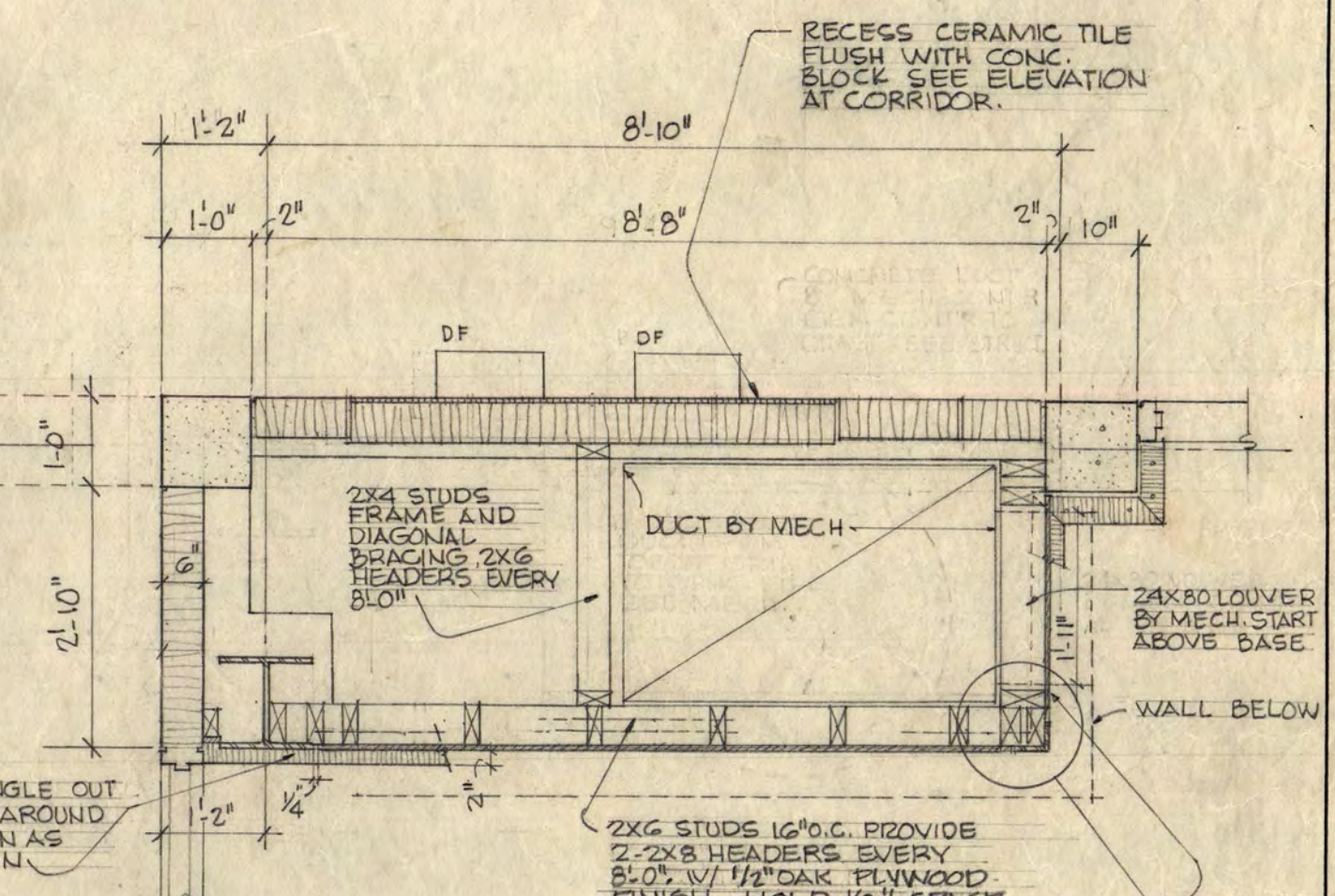
ROOM FINISH SCHEDULE

KEY TO SYMBOLS:

FLOOR	BASE	WALLS	CEILING	PAINT
C CONCRETE	C CONCRETE	CB CONCRETE	P PLASTER	O OIL
T TERRAZZO	T TERRAZZO	GT GARD TILE		
AT ASPHALT TILE	R RUBBER	B BRICK		
PT PLASTIC TILE	CT CERAMIC TILE	C CONCRETE		
CT CERAMIC TILE	PT PLASTER			
W WOOD				

NO.	NAME	FLOOR	BASE	WALLS	CLG.	PAINT	REMARKS
G-200	CORRIDOR	AT	R	CB	P	O	SUSPENDED
G-201	"	AT	R	CB	P	O	SUSPENDED
G-202	"	AT	R	CB	P	O	SUSPENDED
G-203	LOBBY	T	T	CB	P	O	SUSPENDED
G-204	"	T	T	CB	P	O	SUSPENDED
G-205	"	T	T	CB	P	O	SUSPENDED
G-206	"	T	T	CB	P	O	SUSPENDED
G-207	STORAGE ROOM	C	C	C	C	C	
G-208	"	C	C	C	C	C	
G-209	DUCT SPACE	C	C	C	C	C	
G-210	"	C	C	C	C	C	
G-211	STORAGE ROOM	C	C	C	C	C	
G-212	CLASSROOM	AT	R	CB	P	O	
G-213	GYMNASIUM	W	CB				
STAIR 'A'							
		T		C			'E
		T		C			'E
		C		C			'E
		C		C			'E

*ADDED BY SUPPLEMENTAL AGREEMENT. OMITTED BEHIND BLEACHERS IN GYMNASIUM G-213.



INSTRUCTIONAL BUILDING FOR PHYSICAL EDUCATION
ST. CLOUD STATE COLLEGE
DEPARTMENT OF ADMINISTRATION
ROOM 135 STATE CAPITOL BUILDING
ST. PAUL, MINNESOTA

STATE OF MINNESOTA
ST. PAUL, MINNESOTA

A. J. NELSON, STATE ARCHITECT

FIRST FLOOR PLAN AT GYM

TRAYNOR AND HERMANSON ARCHITECTS ST. CLOUD

DATE 1-17-63

APPROVED BY: PRESIDENT ST. CLOUD STATE COLLEGE
APPROVED BY: STATE COLLEGE BOARD
APPROVED BY: COMMISSIONER OF ADMINISTRATION

DATE 1-17-63

STRUCTURAL ENGINEERS: JOHNSON & GANMAN MINNEAPOLIS, MINN.
CONSULTING ENGINEERS: SAUNDERS & MOORE, INC. ST. PAUL, MINN.

STATE PROJECT NUMBER 3425

SEE DRWG. 5 FOR CONTINUATION OF THIS FLOOR.

ROOM FINISH SCHEDULE

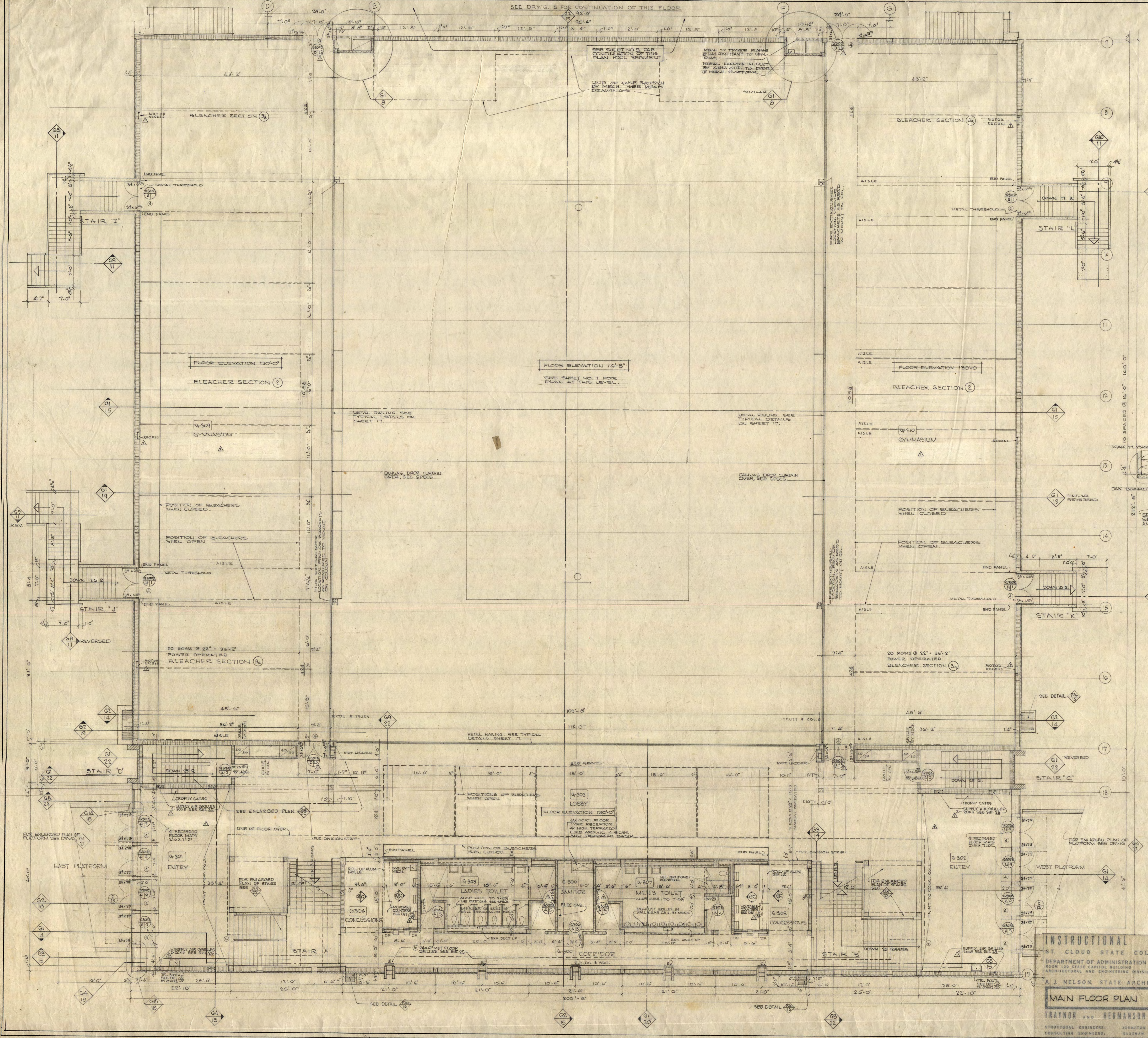
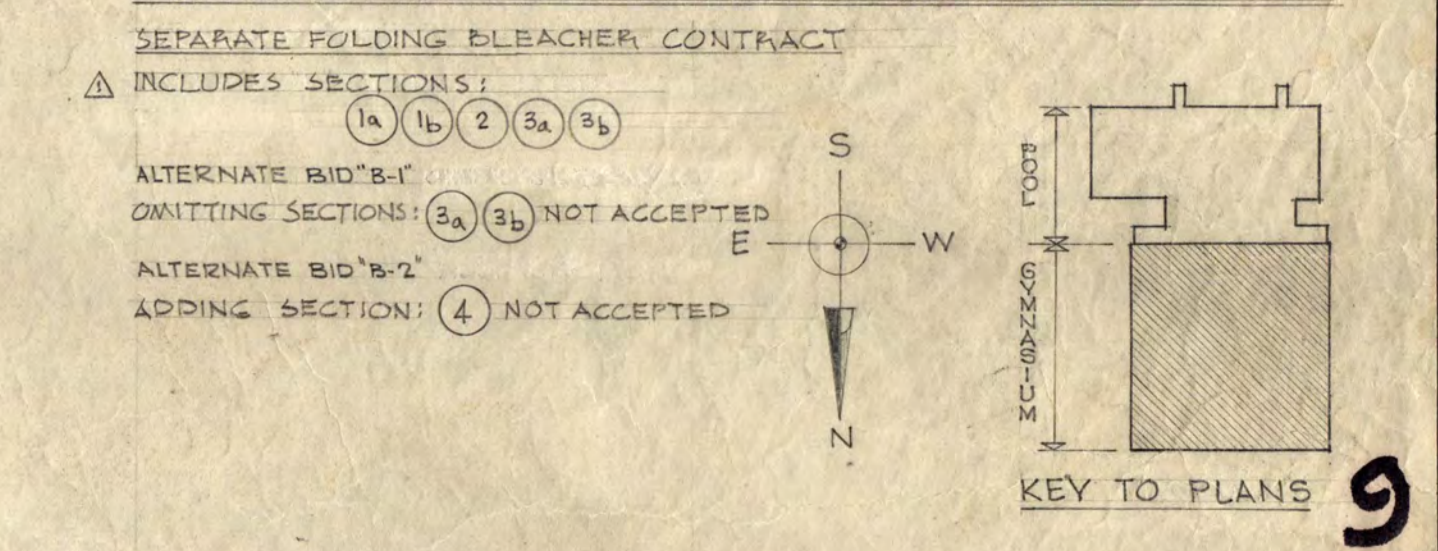
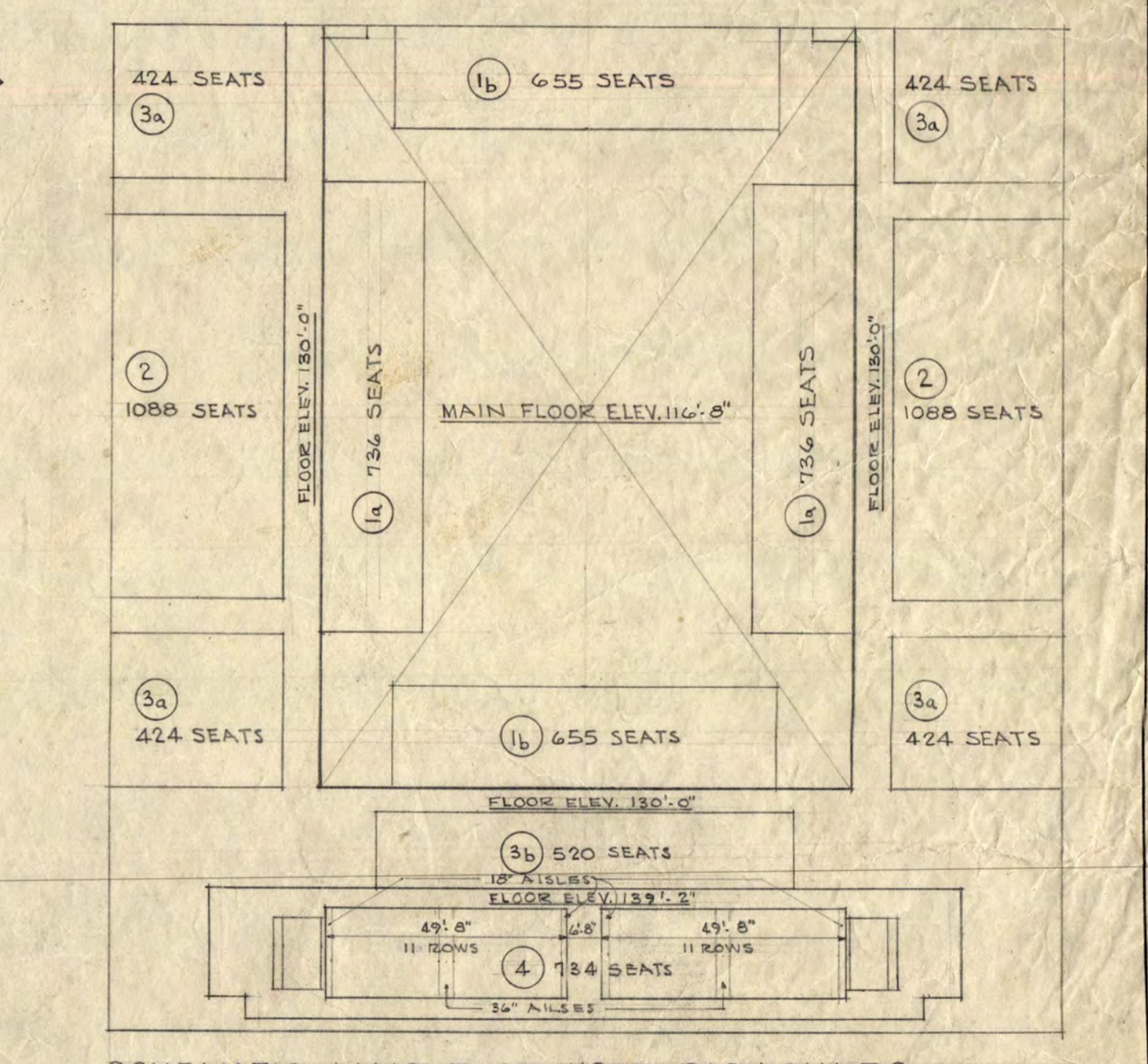
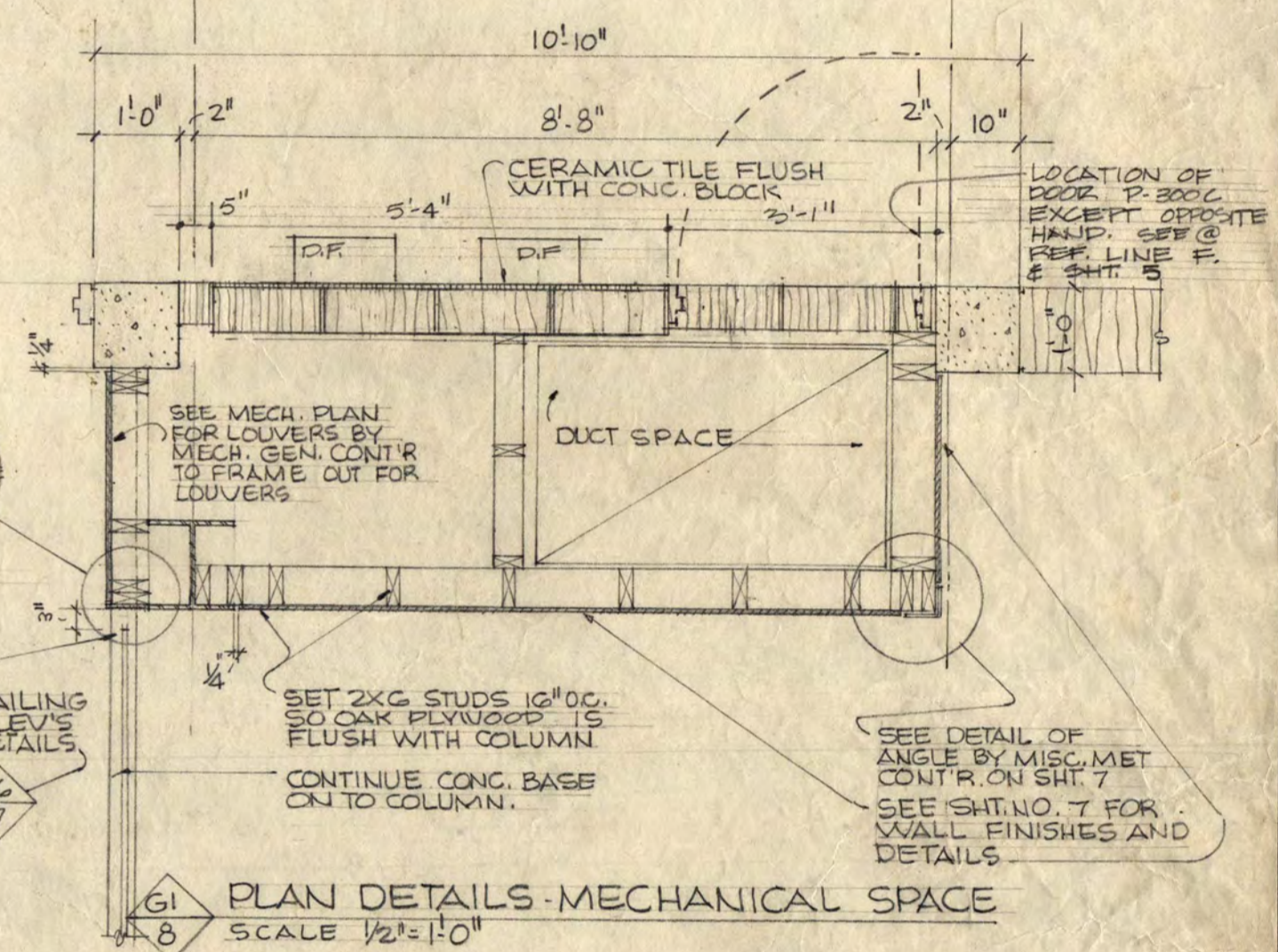
KEY TO SYMBOLS:

FLOOR	BASE	WALLS	CEILING	PAINT
C CONCRETE	C CONCRETE	CB CONCRETE BR.	C CONCRETE	N C
T TERRAZZO	T TERRAZZO	T TERRAZZO	T TERRAZZO	R RUBBER
AT ASPHALT	R RUBBER	B BRICK	W WOOD	
PT PLASTER	CT CERAMIC TILE	C CONCRETE	P PLASTER	
CT CERAMIC TILE	PT PLASTER	CT CERAMIC TILE		
W WOOD				

NO.	NAME	FLOOR	BASE	WALLS	CEG	PAINT	REMARKS
G-300	CORRIDOR	PT	R	CB		N C	
G-301	ENTRY	T	T	CB	W	N C	SUSPENDED WOOD CEILING SEE SH. 22
G-302	ENTRY	T	T	CB	W	N C	SUSPENDED WOOD CEILING SEE SH. 22
G-303	LOBBY	T	T	CB		R R	
G-304	CONCESSIONS	PT	R	CB	C	R R	
G-305	CONCESSIONS	PT	R	CB	C	R R	
G-306	JANITORS ROOM	C	C	CB	C	R R	
G-307	MENS TOILET	T	T	CT	C-P	R	SUSPENDED SEE PLAN
G-308	LADIES TOILET	T	T	CT	C-P	R	SUSPENDED SEE PLAN
G-309	GYMNASIUM	C	C	CB		R R	
G-310	GYMNASIUM	C	C	CB		R R	

STAIR	FLOOR	BASE	WALLS	CEG	PAINT	REMARKS
A	T	C			R	
B	T	C			R	
C	C	CB	C		R	
D	C	CB	C		R	
E	C	C	C		R	
F	C	C	C		R	
G	C	C	C		R	
H	C	C	C		R	

ALL EXPOSED STEEL, STEEL DECK AND STEEL JOISTS TO BE PAINTED.
 *PAINT (OIL) PLASTER PANELS SOUTH WALLS, EAST AND WEST PL. PANELS
 *ADDED BY SUPPLEMENTAL AGREEMENT. IN CORRIDOR, G-300, NORTH WALL TO BE PAINTED FROM FLOOR TO MAIN ROOF.
 *ADDED BY SUPPLEMENTAL AGREEMENT. IN CORRIDOR, G-300, NORTH WALL TO BE PAINTED FROM FLOOR TO MAIN ROOF.
 *ADDED BY SUPPLEMENTAL AGREEMENT. IN CORRIDOR, G-300, NORTH WALL TO BE PAINTED FROM FLOOR TO MAIN ROOF.



INSTRUCTIONAL BUILDING FOR PHYSICAL EDUCATION
 ST. CLOUD STATE COLLEGE
 ST. CLOUD, MINNESOTA

DEPARTMENT OF ADMINISTRATION
 ROOM 120 STATE CAPITOL BUILDING
 ARCHITECTURAL AND ENGINEERING DIVISION
 STATE OF MINNESOTA
 ST. PAUL, MINNESOTA

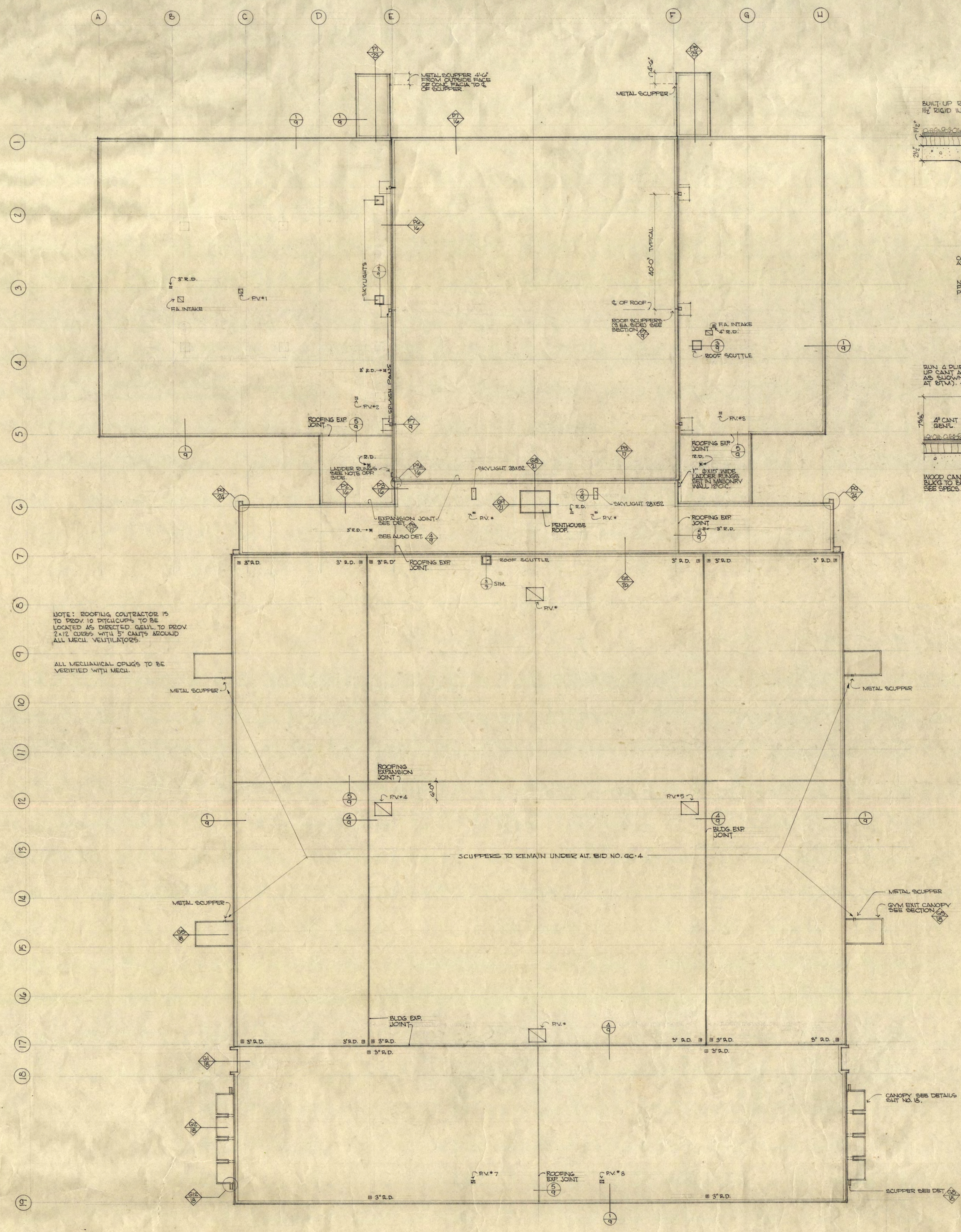
APPROVED BY: PRESIDENT OF ST. CLOUD STATE COLLEGE
 APPROVED BY: STATE COLLEGE BOARD
 APPROVED BY: COMMISSIONER OF ADMINISTRATION
 AN AUTHORIZED SIGNATURE

A. J. NELSON STATE ARCHITECT
TRAYNOR AND HERMANSON ARCHITECTS ST. CLOUD

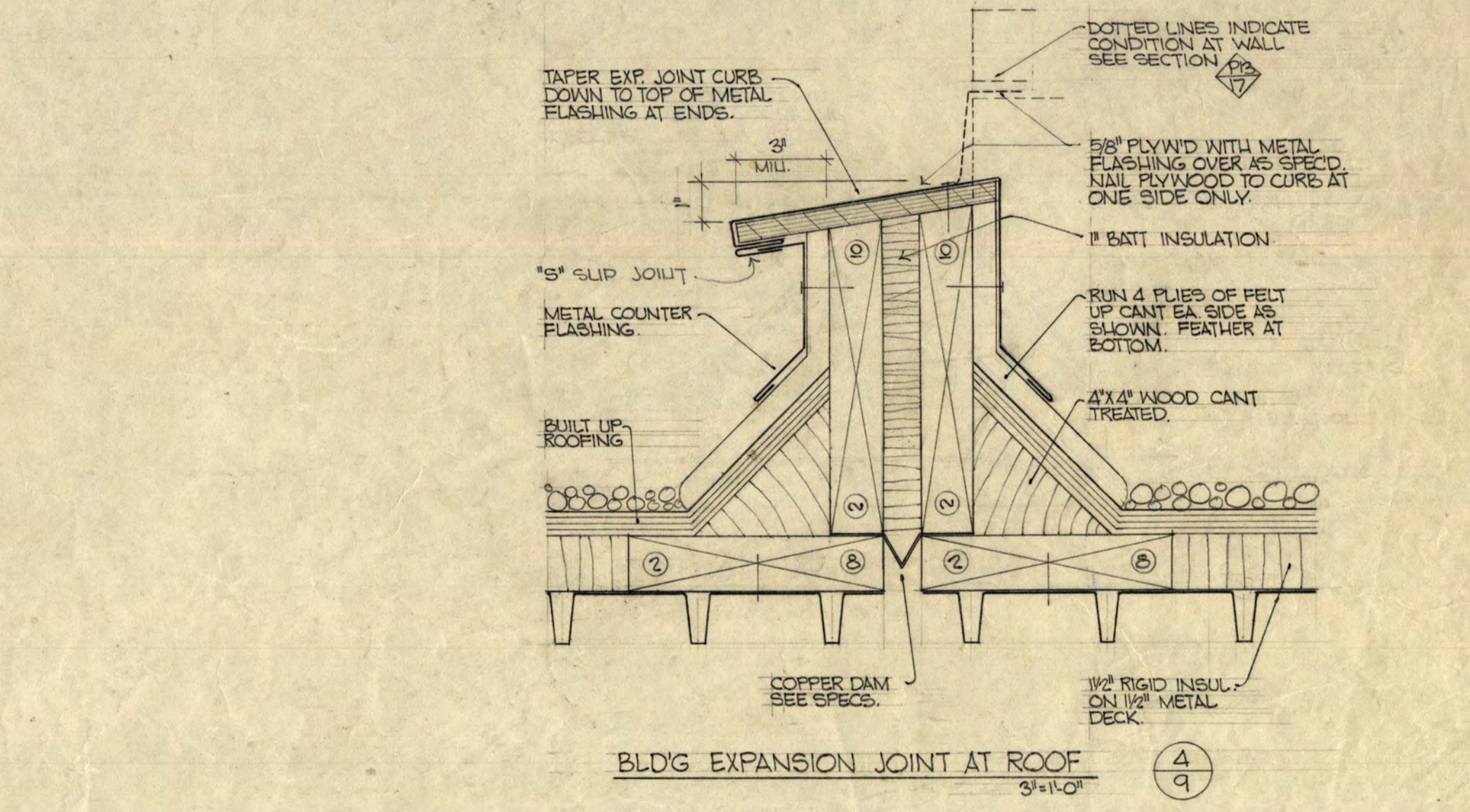
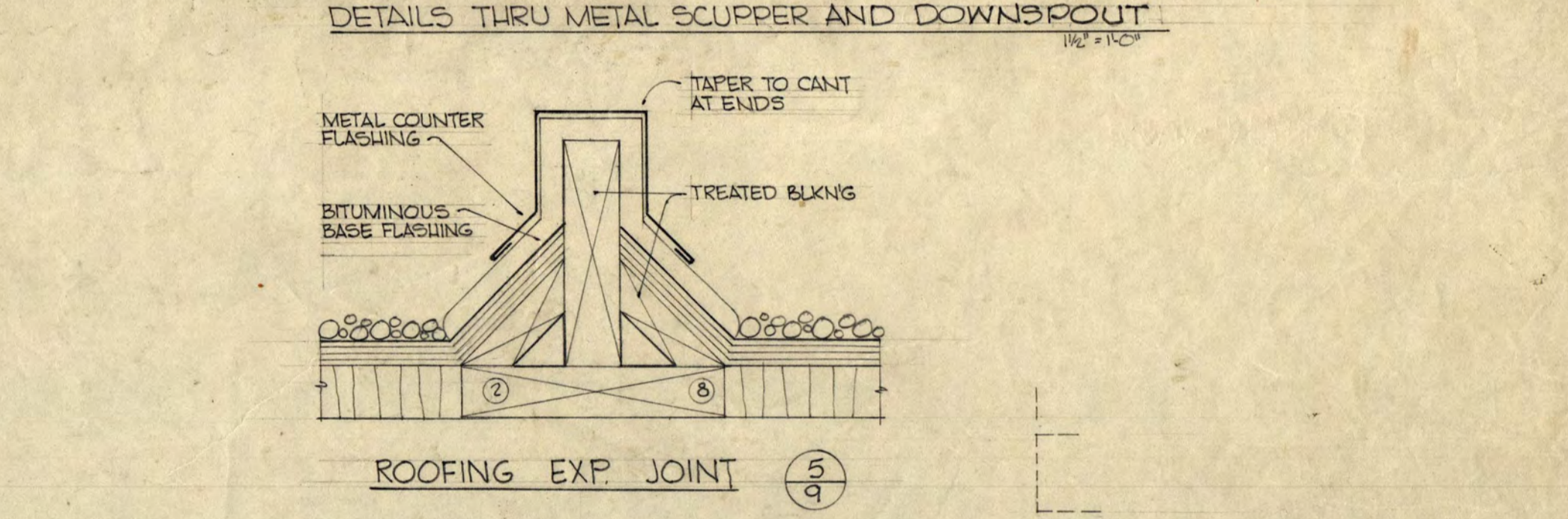
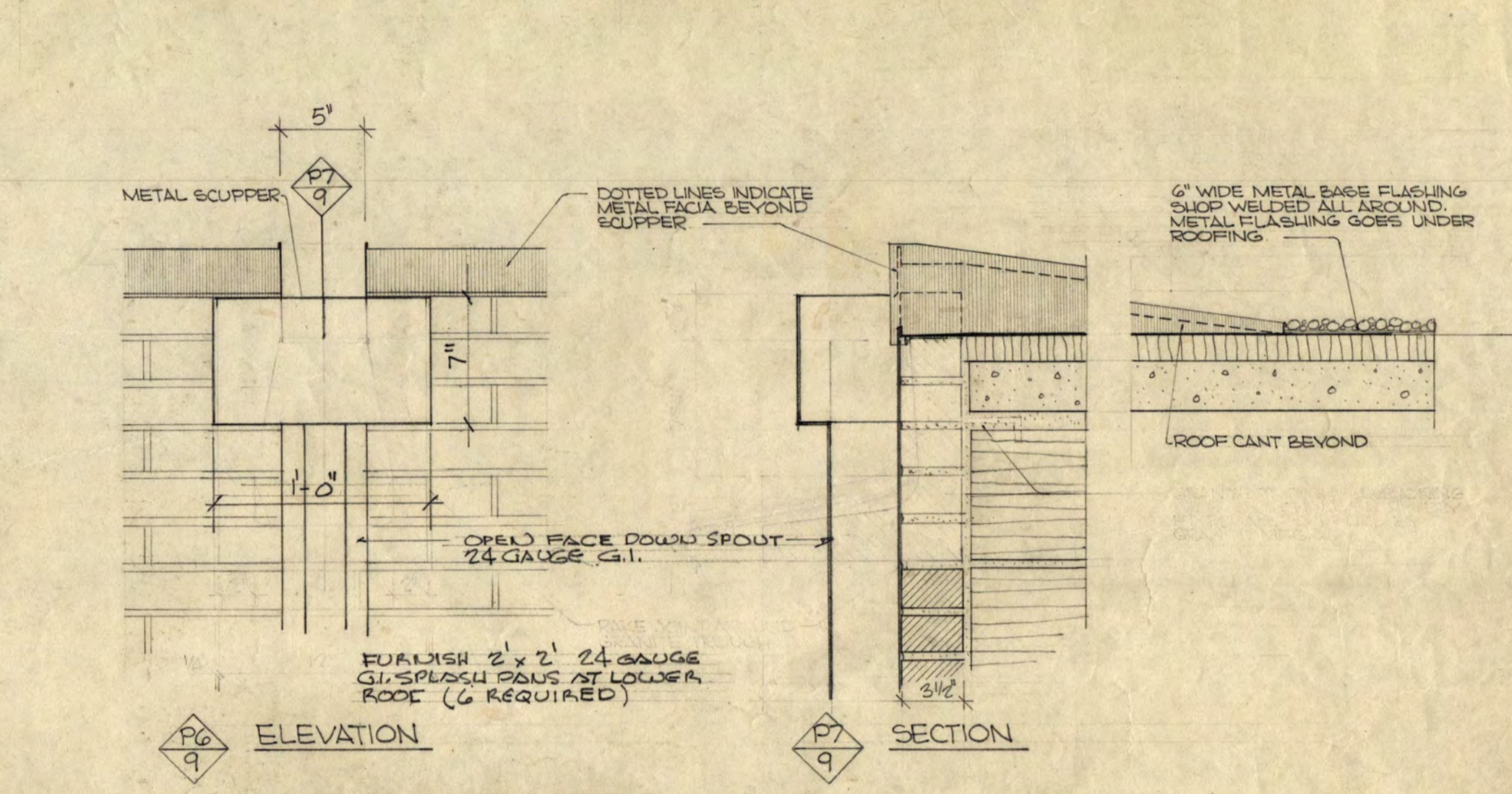
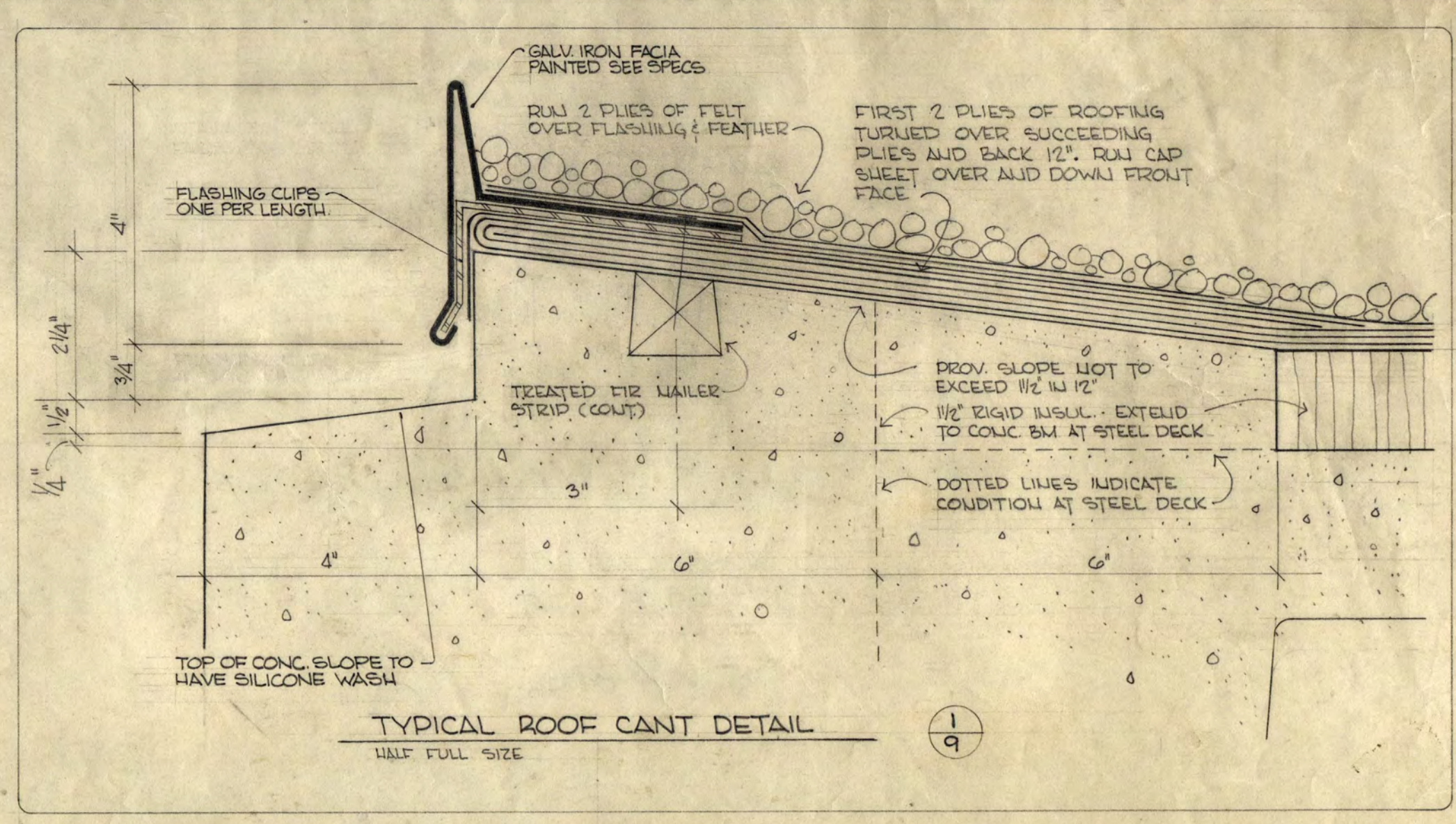
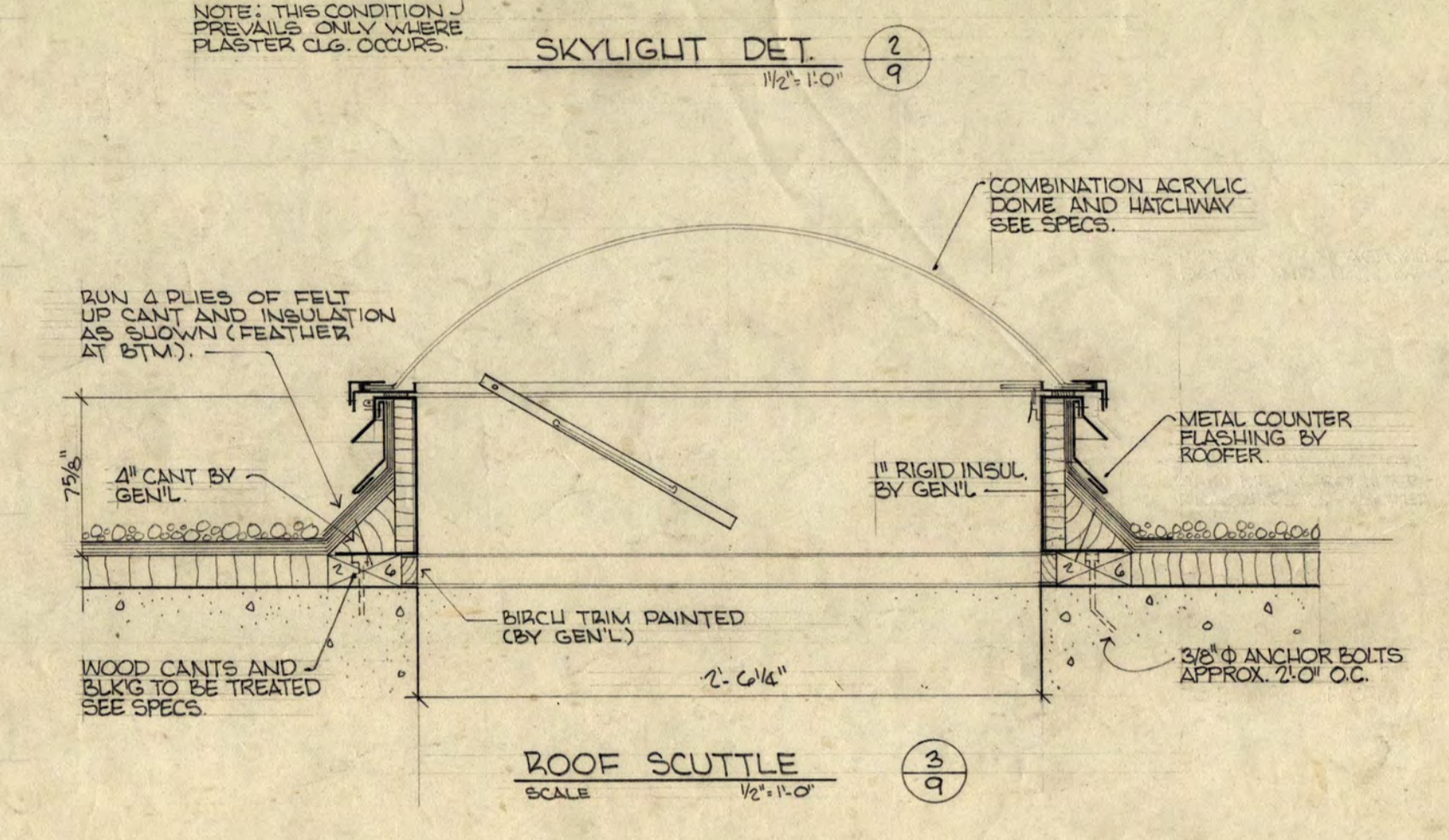
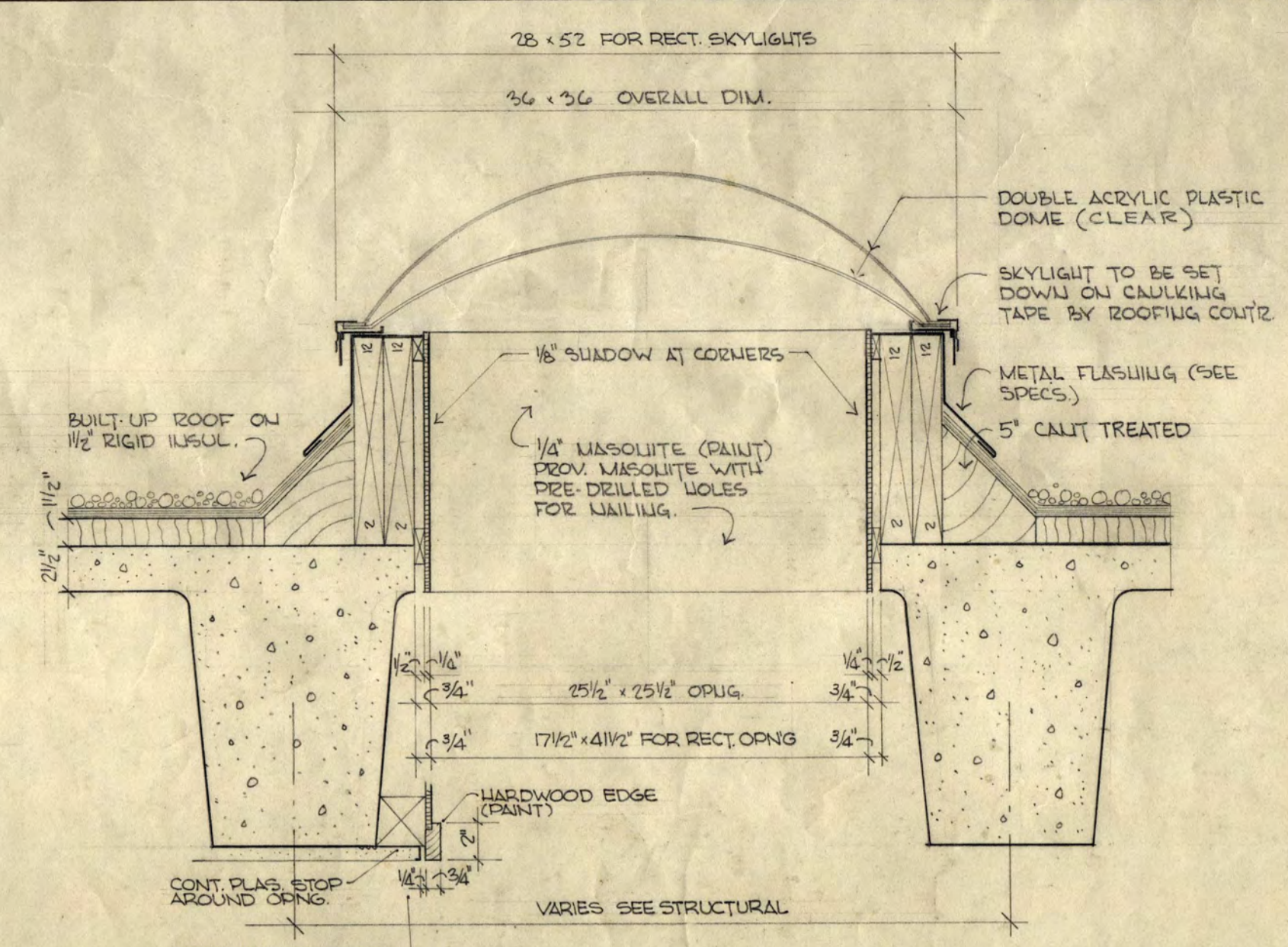
DATE: 1-17-68
 DRAWN: L.V., T.V.B., R.A.S.
 CHECKED: A.A. BUILT

MINNEAPOLIS, MINN.
 ST. PAUL, MINN.

SHEET ARCHITECTURAL
 35
 STATE PROJECT NUMBER
 3425



ROOF PLAN SCALE 1/8" = 1'-0"



INSTRUCTIONAL BUILDING FOR PHYSICAL EDUCATION
 ST. CLOUD STATE COLLEGE ST. CLOUD, MINNESOTA
 DEPARTMENT OF ADMINISTRATION STATE OF MINNESOTA
 ROOM 120 STATE CAPITOL BUILDING ST. PAUL, MINNESOTA
 ARCHITECTURAL AND ENGINEERING DIVISION
 A. J. NELSON, STATE ARCHITECT APPROVED BY PRESIDENT ST. CLOUD STATE COLLEGE
 APPROVED BY STATE COLLEGE BOARD
 APPROVED BY COMMISSIONER OF ADMINISTRATION
 AN AUTHORIZED SIGNATURE
 TRAYNOR AND HERMANSON ARCHITECTS ST. CLOUD DATE 1-17-68 DRAWN T.J.O. CHECKED
 STRUCTURAL ENGINEERS: JOHNSTON & SANLAWAN MINNEAPOLIS, MINN.
 CONSULTING ENGINEERS: GAUSMAN & MOORE, INC. ST. PAUL, MINN.

ROOF PLAN - ROOF DETAILS
 SHEET ARCHITECTURAL 9 OF 38
 STATE PROJECT NUMBER 3425