

1 SECTION THRU STAIR 'D' THUS, SECTION THRU STAIR 'C' REVERSED
1/2" = 1'-0"

4 PART SECT. WEST WALL STAIR 'D' THUS
1/2" = 1'-0"

EDUCATION BUILDING ST. CLOUD STATE COLLEGE

TRAYNOR, HERMANSON & HAHN ARCHITECTS INC. SHEET NO. 13

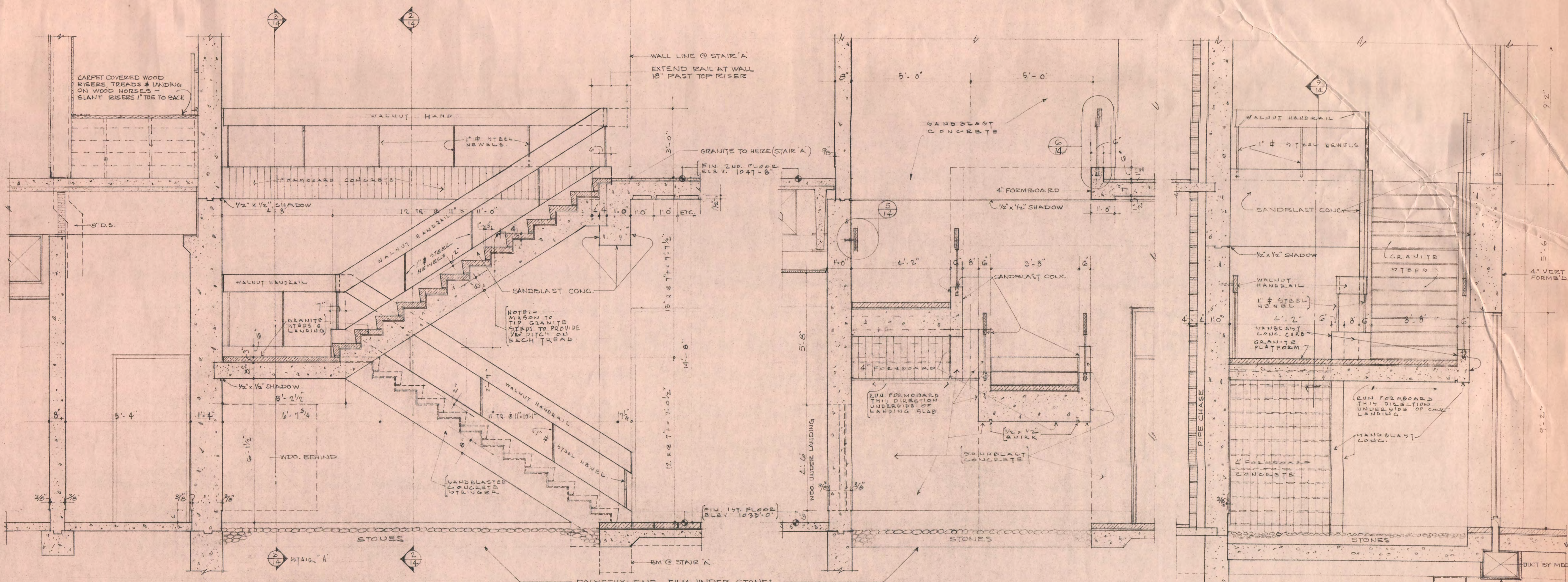
ST. CLOUD, MINNESOTA
STRUCTURAL ENGINEERS JOHNSTON & SAHLMAN, INC. MPLS., MINN.
CONSULTING ENGINEERS GAUSMAN & MOORE, INC. ST. PAUL, MINN.

DRAWN LLY EAK CHECKED FVT DATE NOV. 10, 1969 OF 21

STATE OF MINNESOTA
DEPARTMENT OF ADMINISTRATION
ARCHITECTURAL AND ENGINEERING DIVISION
ROOM 6-10 ADMINISTRATION BUILDING
ST. PAUL 55101

APPROVED BY _____
APPROVED BY _____
APPROVED BY _____

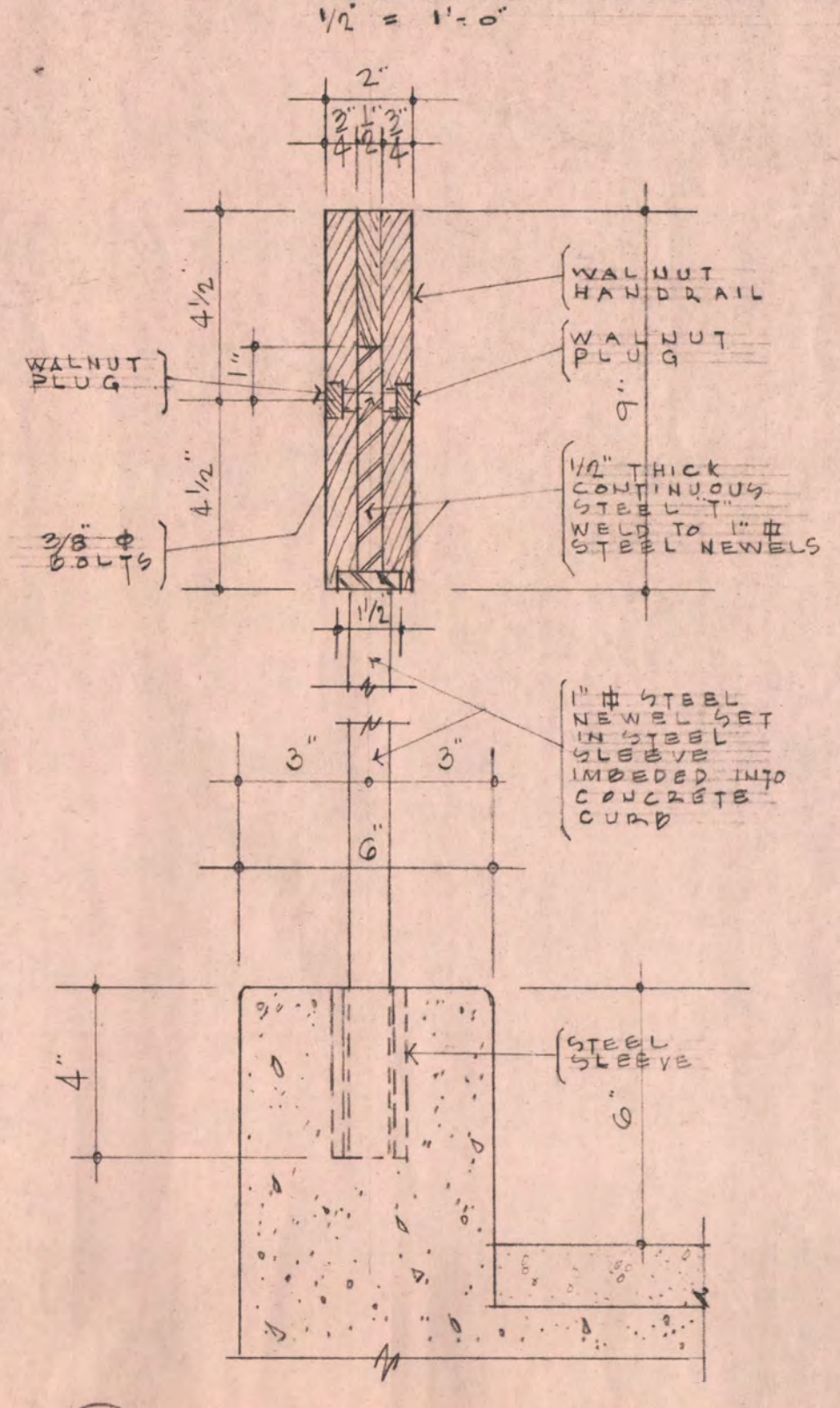
STATE PROJECT NO. 6360150
COMMISSIONER OF ADMINISTRATION
AN AUTHORIZED SIGNATURE



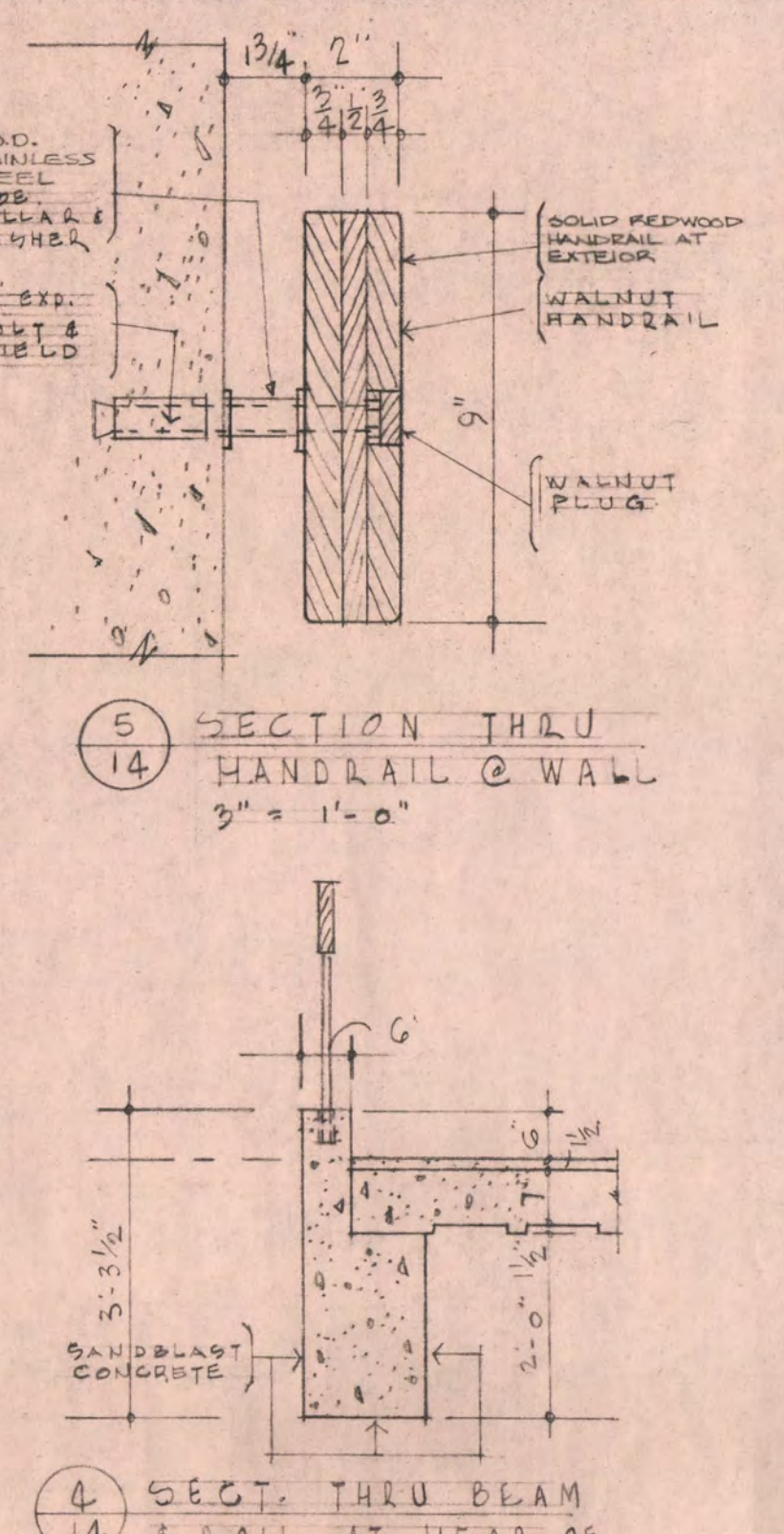
1 SECTION THRU STAIR "B"
 1/4" = 1'-0"
 A SIMILAR (SEE FLOOR PLAN FOR VARIATIONS)

2 CROSS SECTION - STAIR "B"
 1/2" = 1'-0"

3 CROSS SECTION - STAIR "A"
 1/2" = 1'-0"

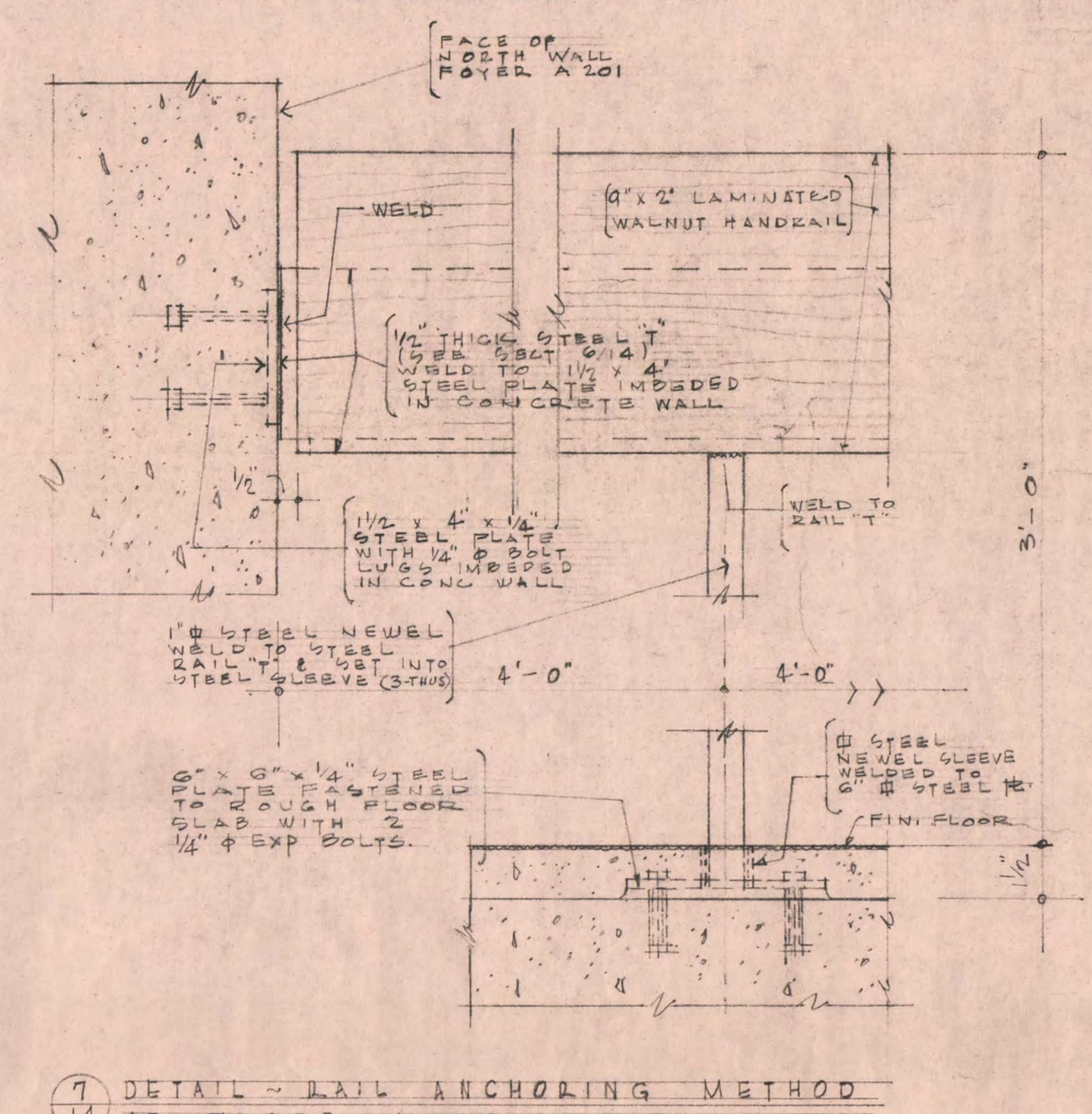


4 SECT. THRU STAIR RAIL
 1/4" = 1'-0"

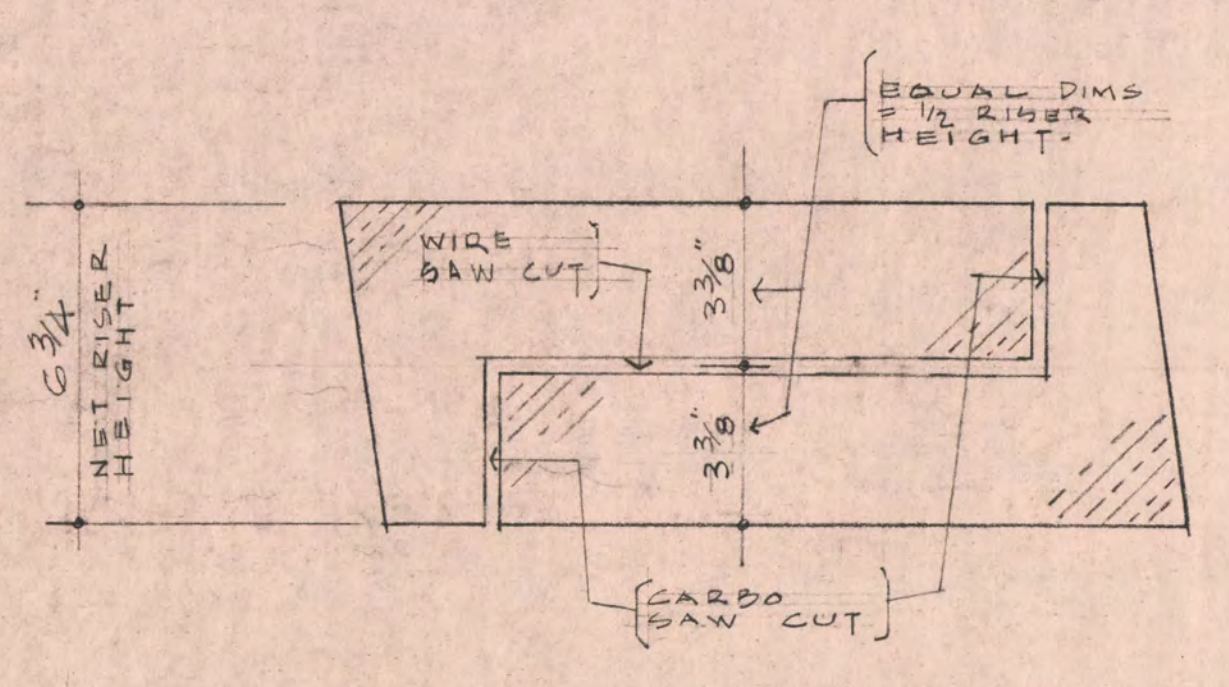


5 SECTION THRU HANDRAIL @ WALL
 3/8" = 1'-0"

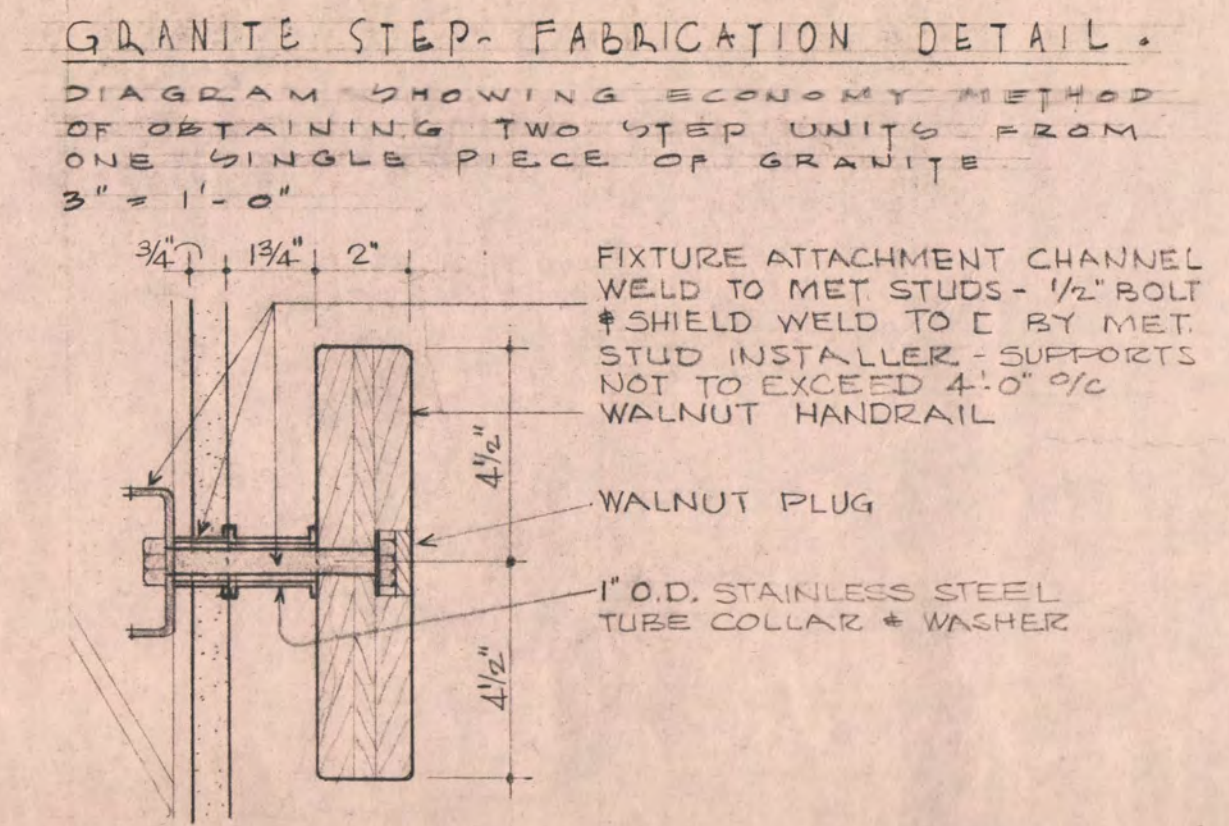
4 SECT. THRU BEAM & WALL AT HEAD OF STAIRS "A" & "B"
 1/4" = 1'-0"



7 DETAIL - RAIL ANCHORING METHOD AT FOYER A-201
 3/8" = 1'-0"



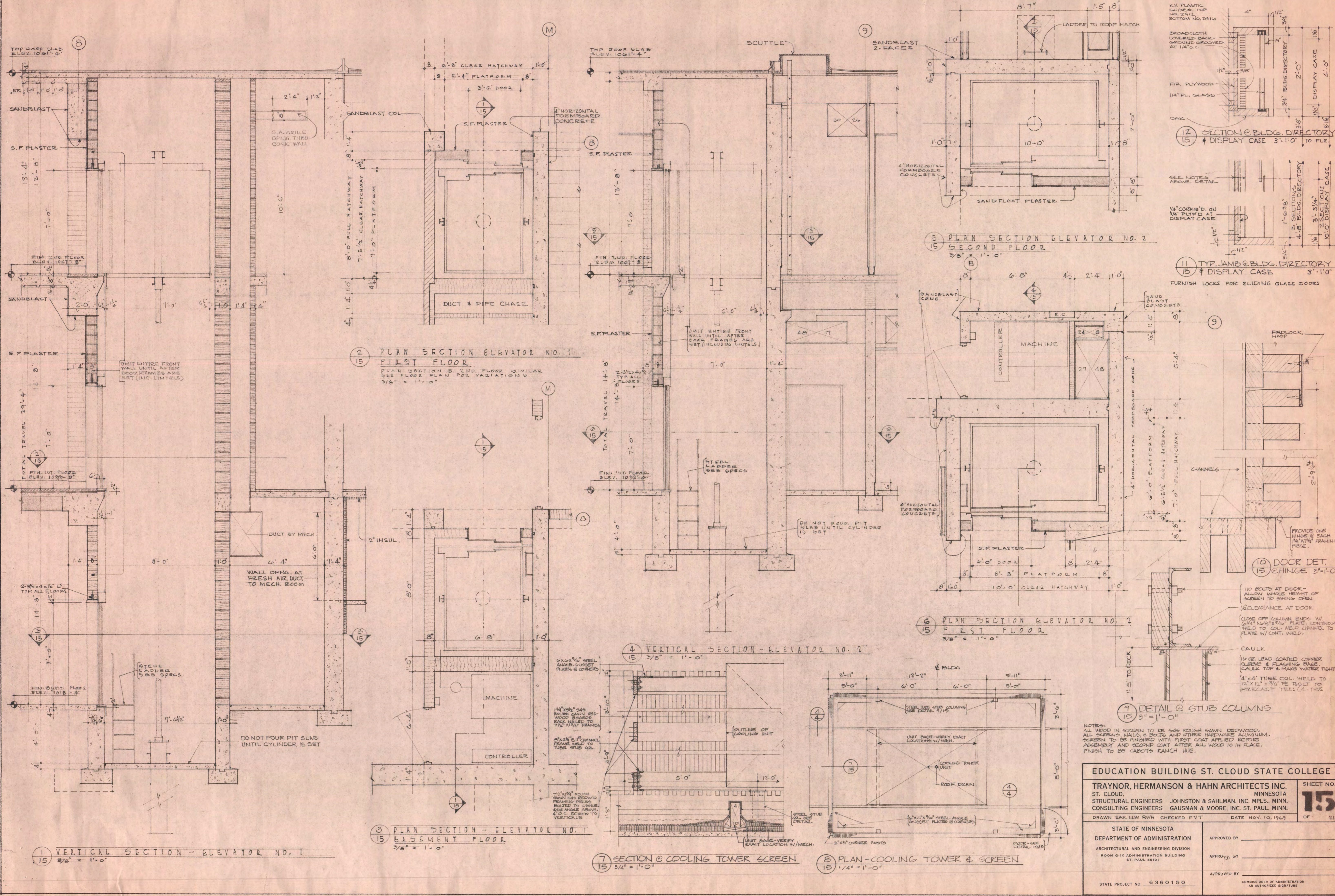
8 HANDRAIL @ MET. STUDS DET.
 3/8" = 1'-0"

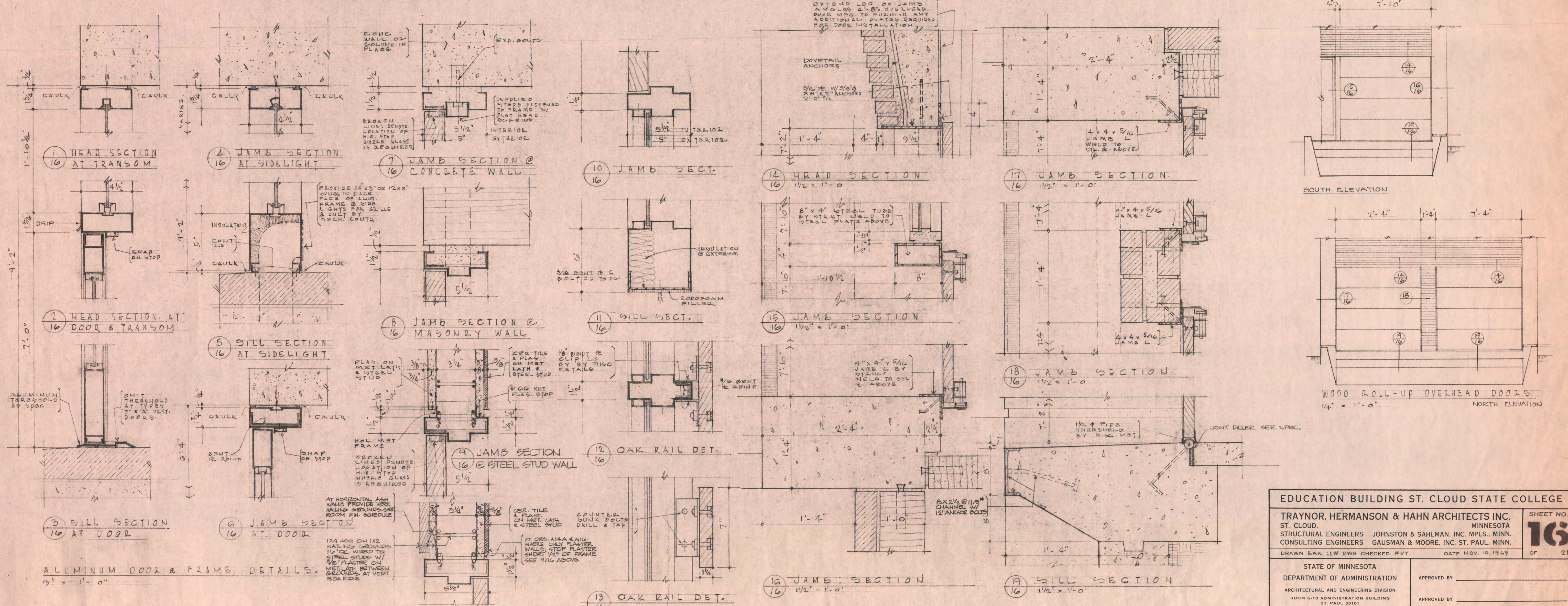
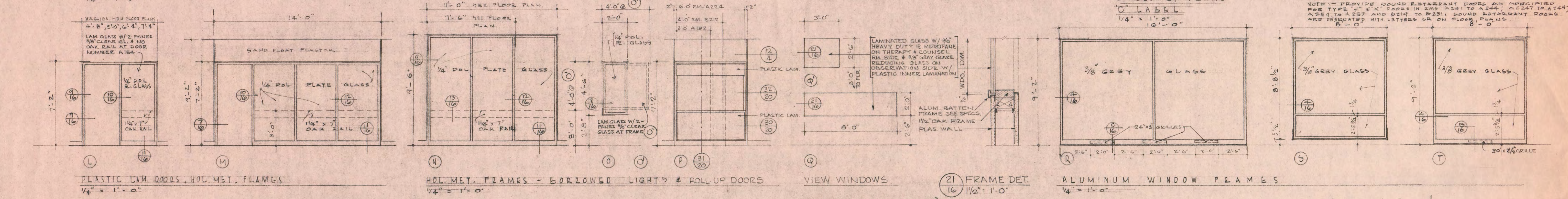
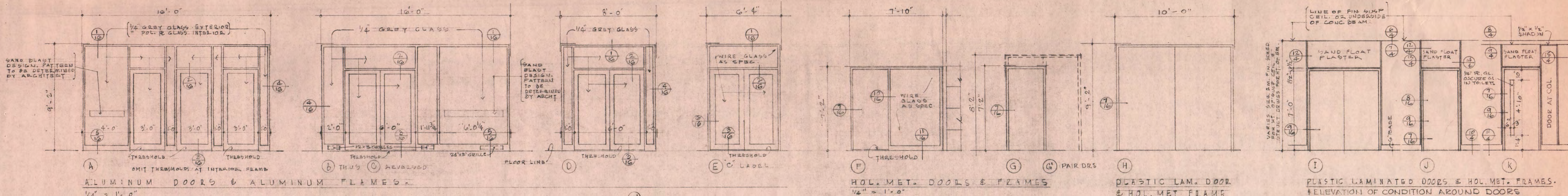


9 SOUTH WALL @ STAIR "A" & BM. ON LINE B
 1/2" = 1'-0"

GRANITE STEP-FABRICATION DETAIL
 DIAGRAM SHOWING ECONOMY METHOD OF OBTAINING TWO STEP UNITS FROM ONE SINGLE PIECE OF GRANITE
 3" = 1'-0"

EDUCATION BUILDING ST. CLOUD STATE COLLEGE		SHEET NO.
TRAYNOR, HERMANSON & HAHN ARCHITECTS INC. ST. CLOUD, MINNESOTA		14
STRUCTURAL ENGINEERS	JOHNSTON & SAHLMAN, INC. MPLS., MINN.	OF 21
CONSULTING ENGINEERS	GAUSMAN & MOORE, INC. ST. PAUL, MINN.	
DRAWN LLW: EAK	CHECKED FVT	DATE NOV. 10, 1969
STATE OF MINNESOTA DEPARTMENT OF ADMINISTRATION ARCHITECTURAL AND ENGINEERING DIVISION ROOM 6-10 ADMINISTRATION BUILDING ST. PAUL 55101		APPROVED BY _____ APPROVED BY _____ APPROVED BY _____
STATE PROJECT NO. 6360150		COMMISSIONER OF ADMINISTRATION AN AUTHORIZED SIGNATURE





EDUCATION BUILDING ST. CLOUD STATE COLLEGE

TRAYNOR, HERMANSON & HAHN ARCHITECTS INC.
 ST. CLOUD, MINNESOTA
 STRUCTURAL ENGINEERS JOHNSTON & SAHLMAN, INC. MPLS., MINN.
 CONSULTING ENGINEERS GAUSMAN & MOORE, INC. ST. PAUL, MINN.

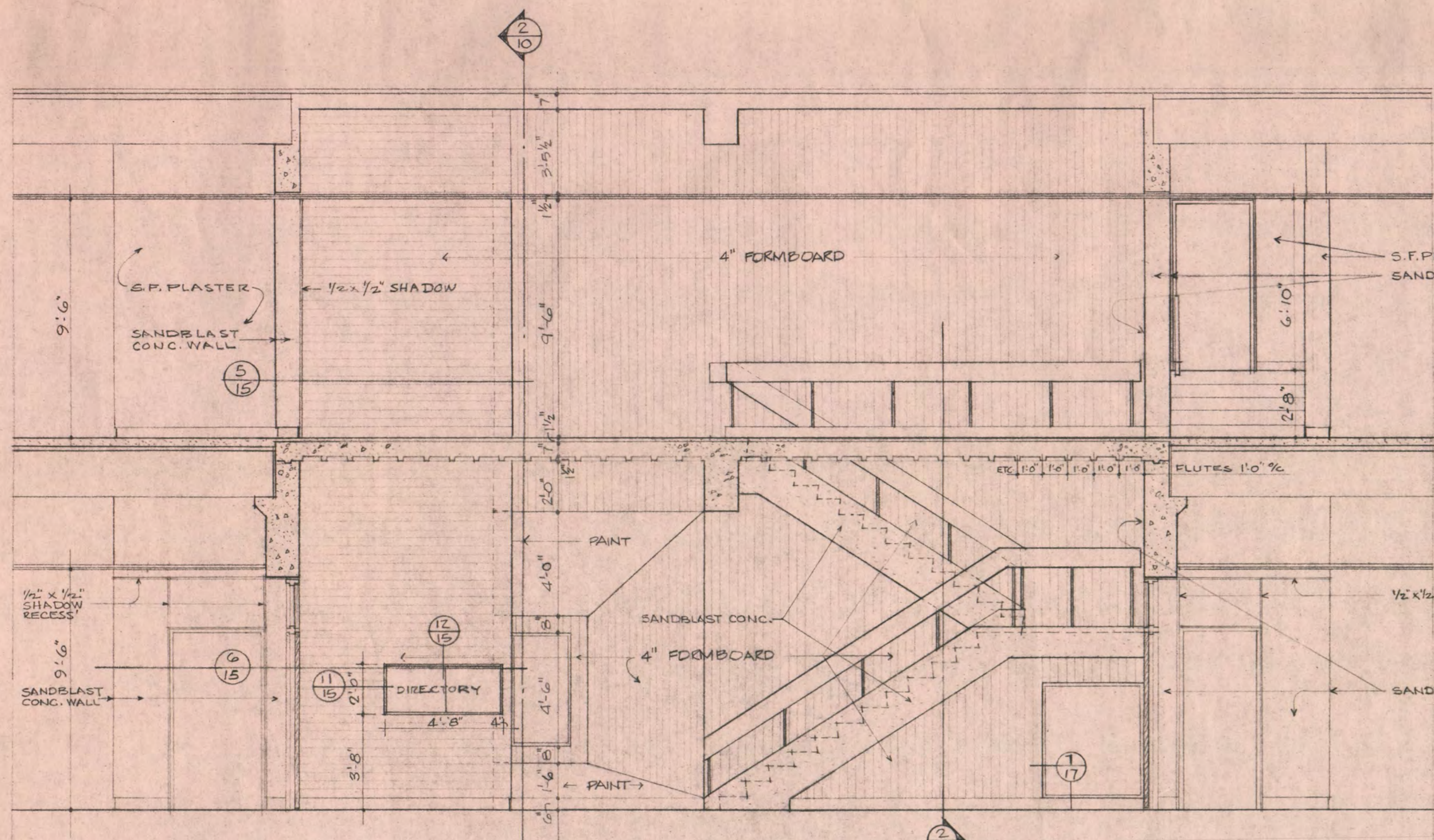
DRAWN EAK, LLW, RWH CHECKED FVT DATE NOV. 10, 1969 OF 21

STATE OF MINNESOTA
 DEPARTMENT OF ADMINISTRATION
 ARCHITECTURAL AND ENGINEERING DIVISION
 ROOM 6-10 ADMINISTRATION BUILDING
 ST. PAUL 55101

APPROVED BY _____
 APPROVED BY _____
 APPROVED BY _____

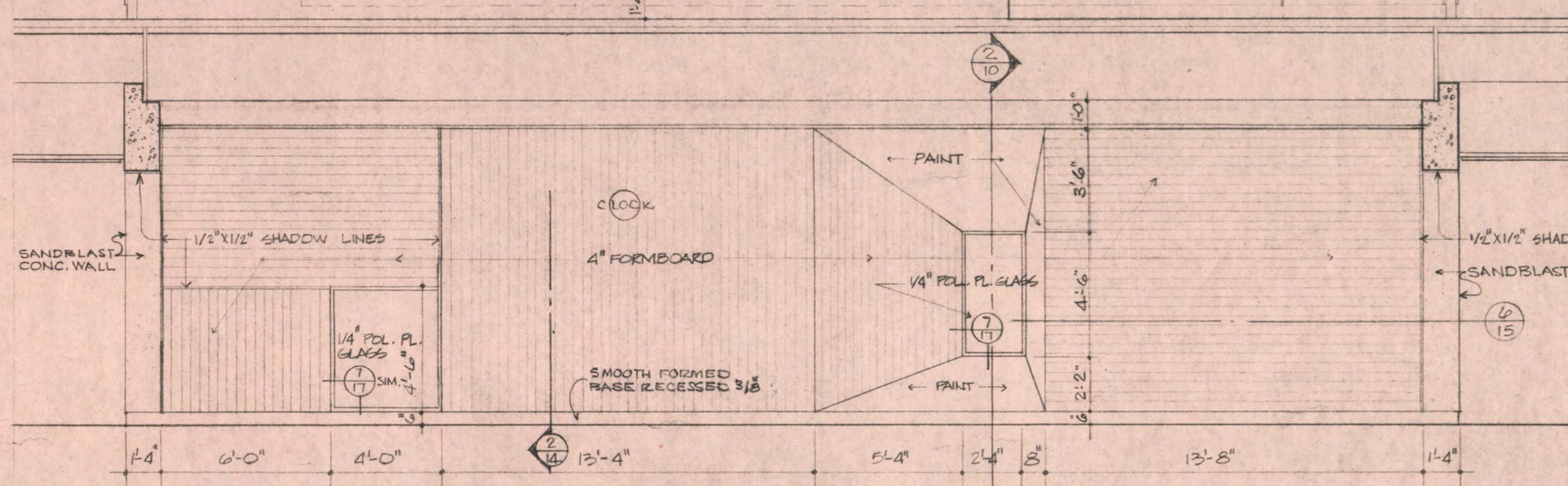
STATE PROJECT NO. 6360150
 COMMISSIONER OF ADMINISTRATION
 AN AUTHORIZED SIGNATURE

16

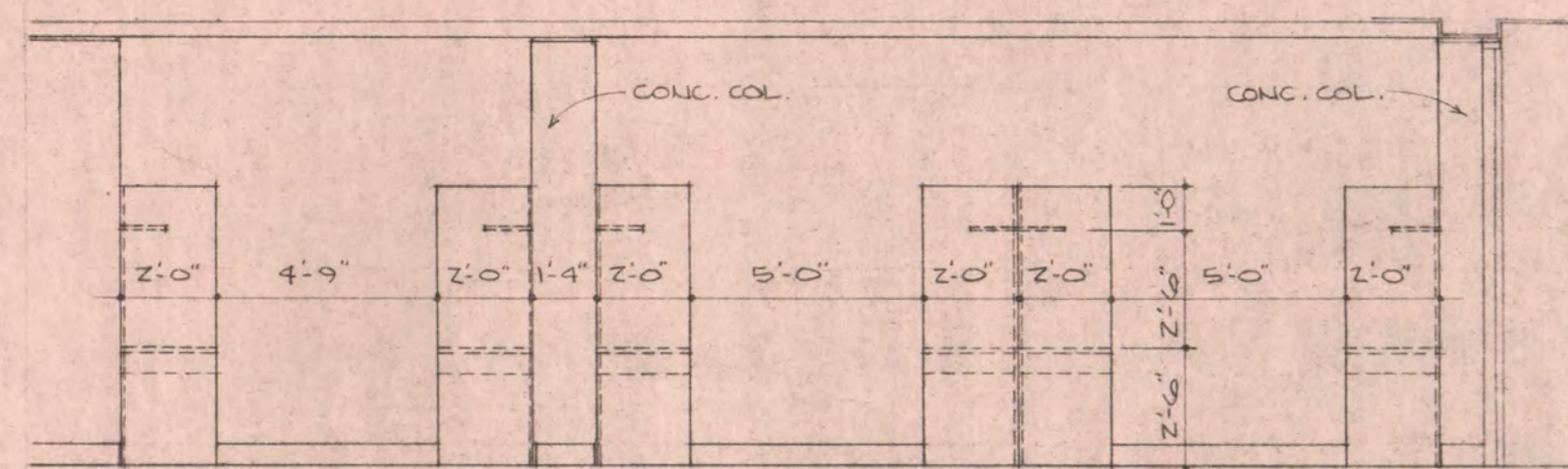


1 ENTRY A102, STAIR B + CORRIDOR A206 ELEVATION
17 1/4" = 1'-0"

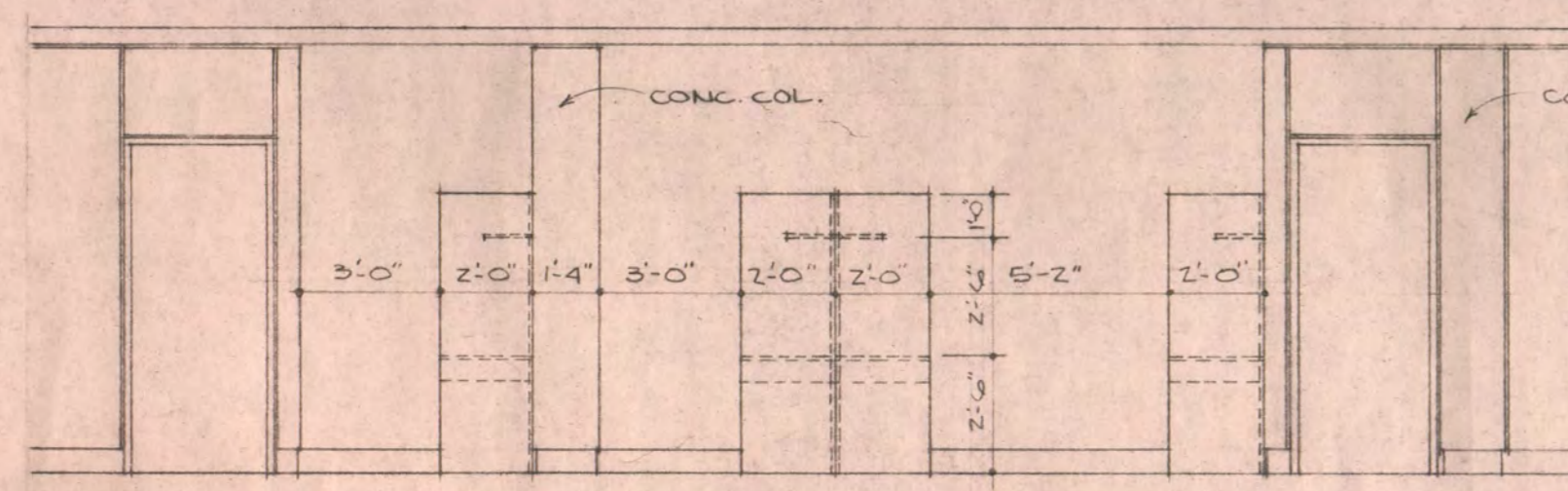
NOTE: ALL AREAS SHOWN AS PAINTED TO BE SMOOTH FORMED W/ SINGLE PICE OF MATERIAL



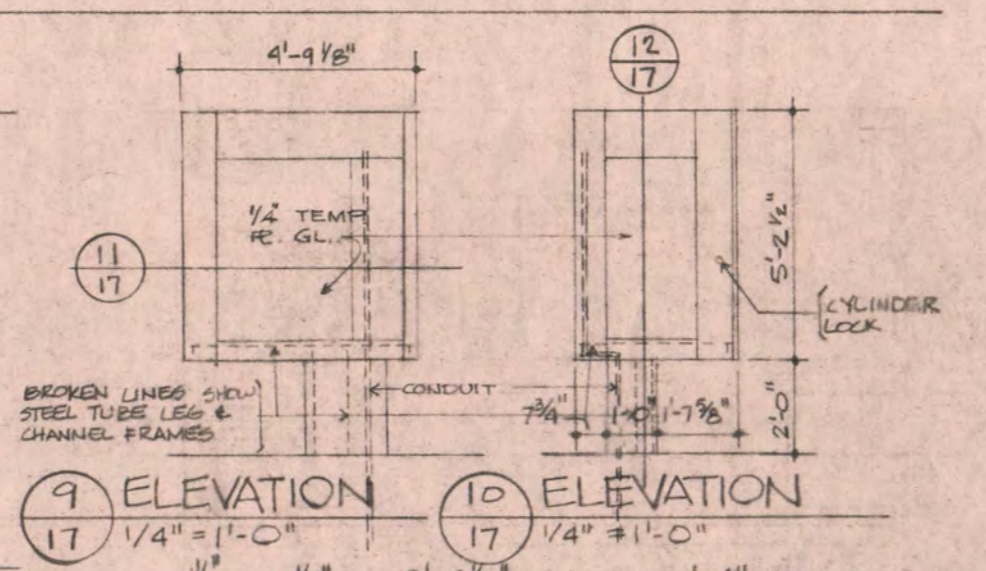
3 WEST WALL ELEVATION OF L.R.C.
17 1/4" = 1'-0"



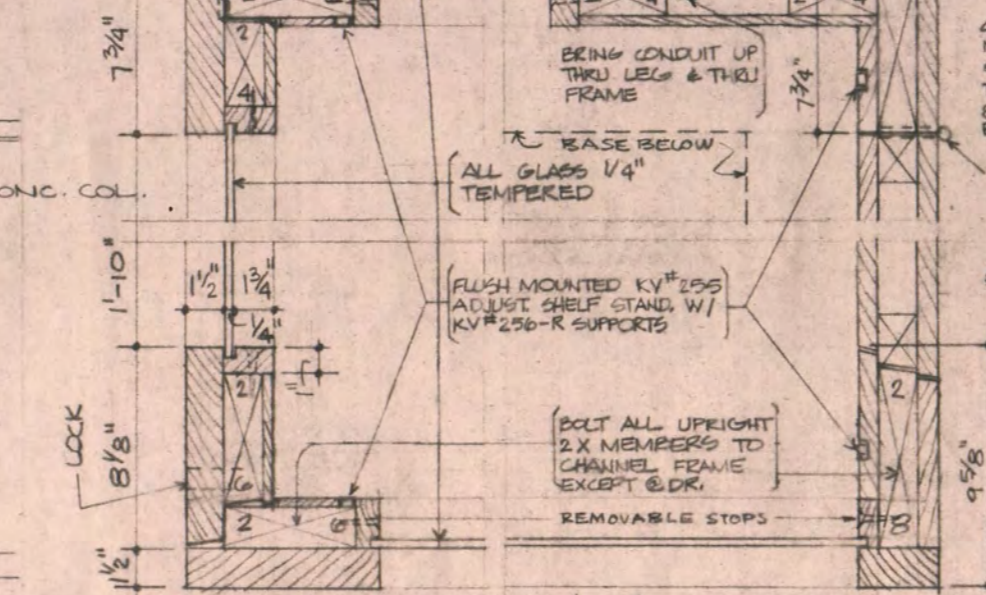
5 ELEVATION OF CARRELS @ CORRIDOR A104
17 1/4" = 1'-0"



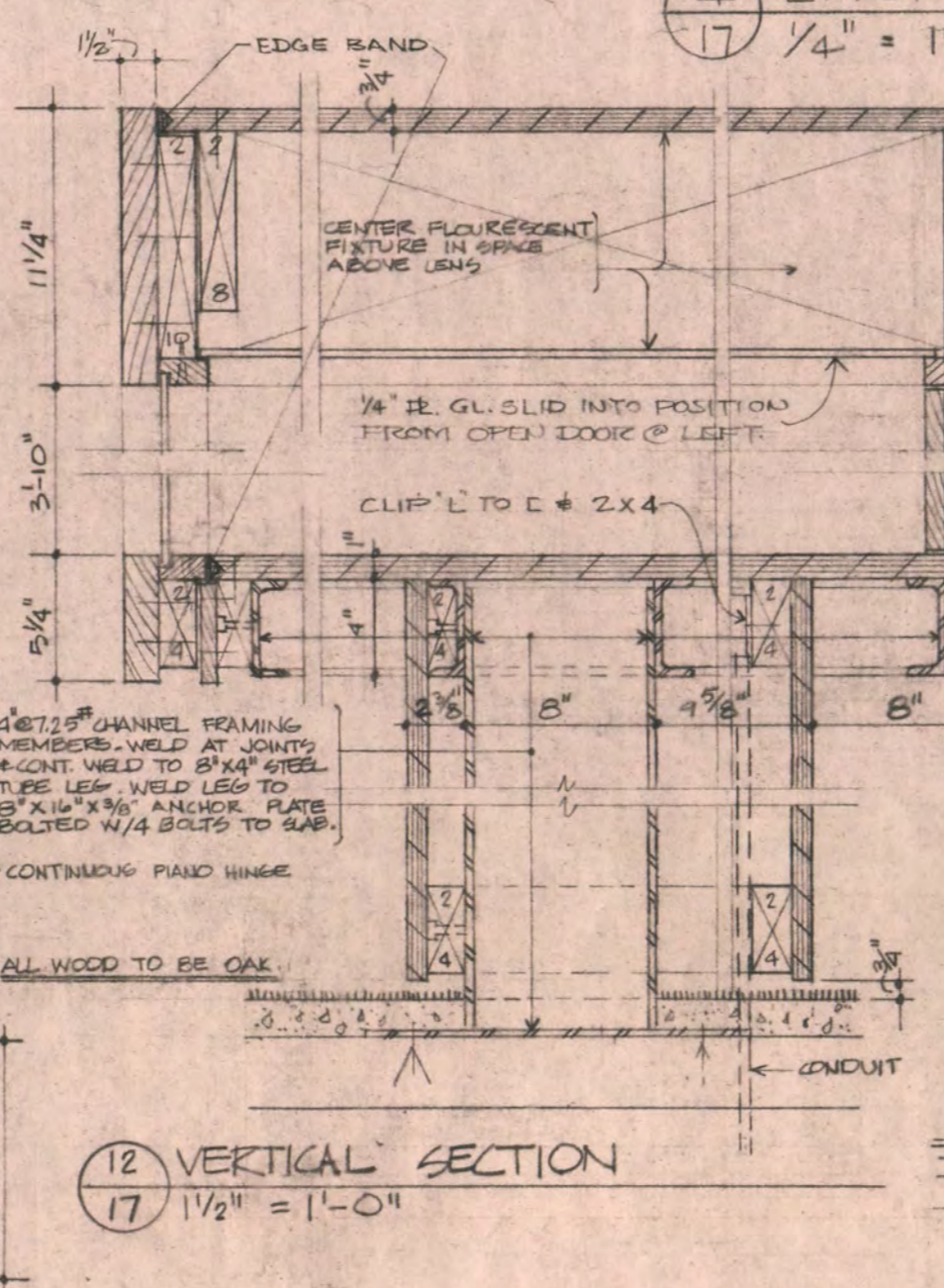
6 ELEVATION OF CARRELS @ CORRIDOR B101
17 1/4" = 1'-0"



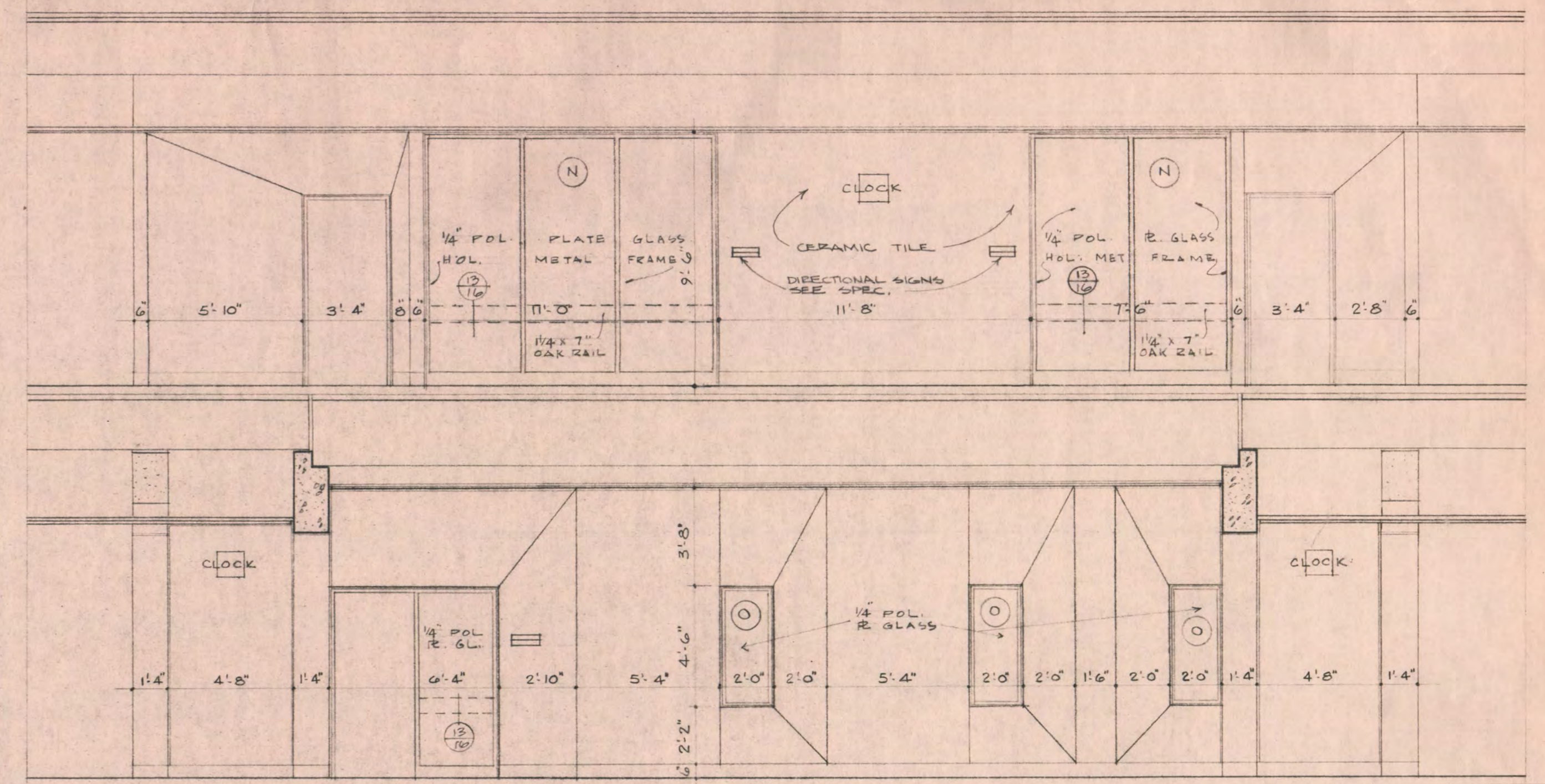
9 ELEVATION 17 1/4" = 1'-0"



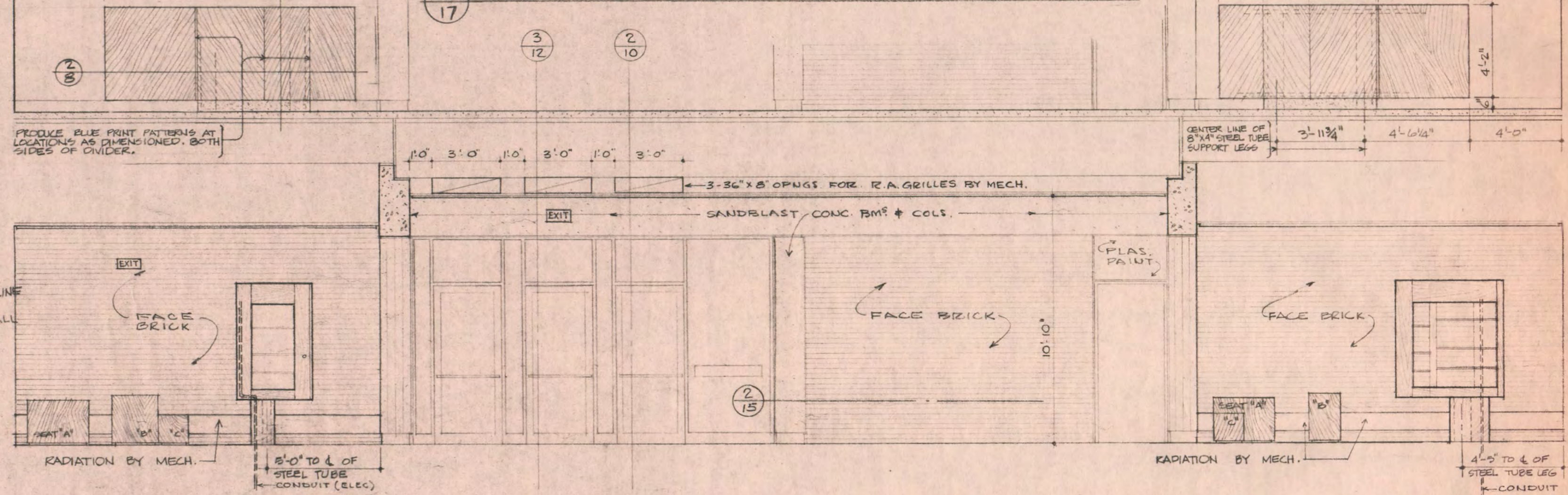
11 HORIZONTAL SECTION 17 1/2" = 1'-0"



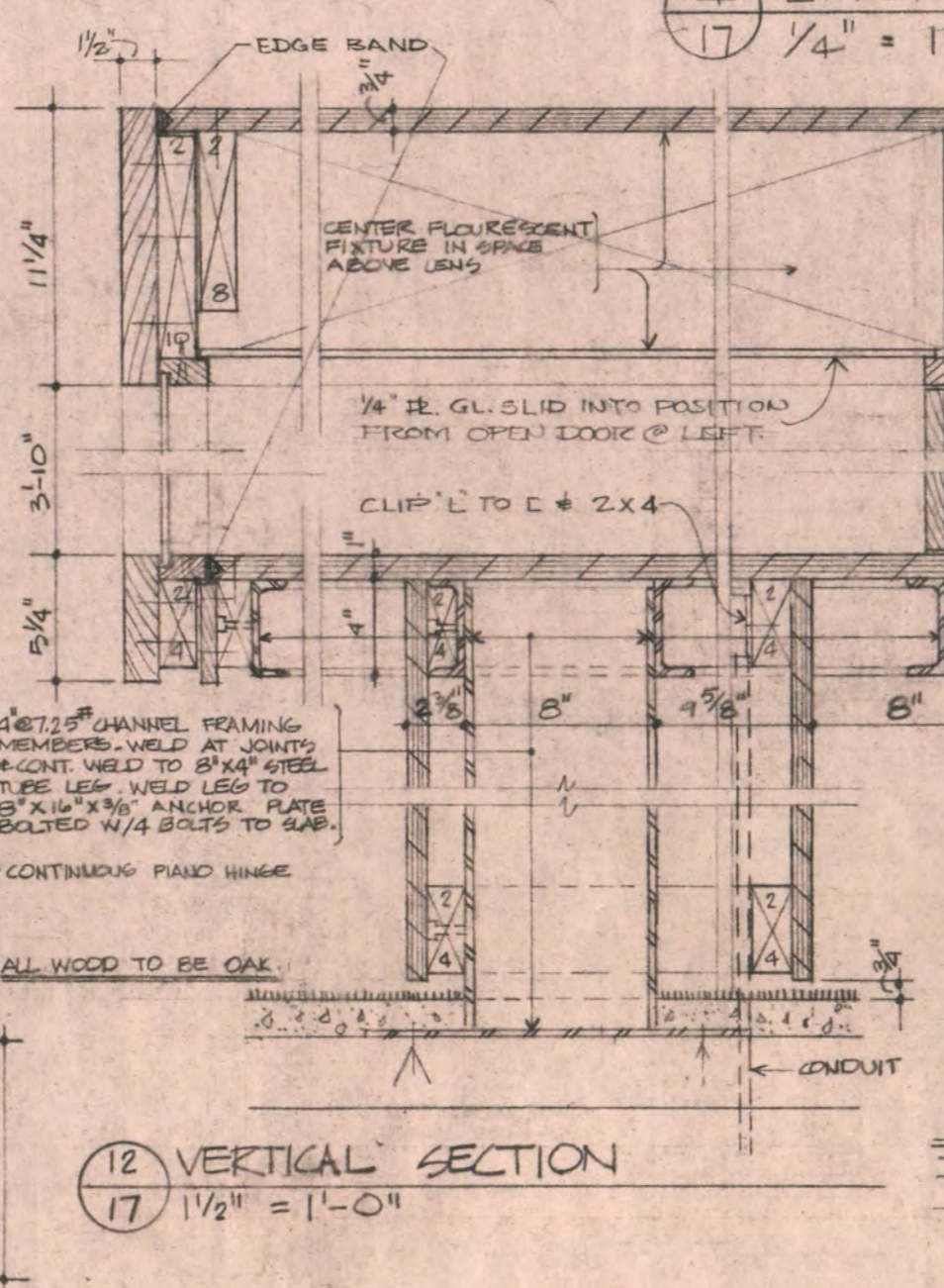
12 VERTICAL SECTION 17 1/2" = 1'-0"



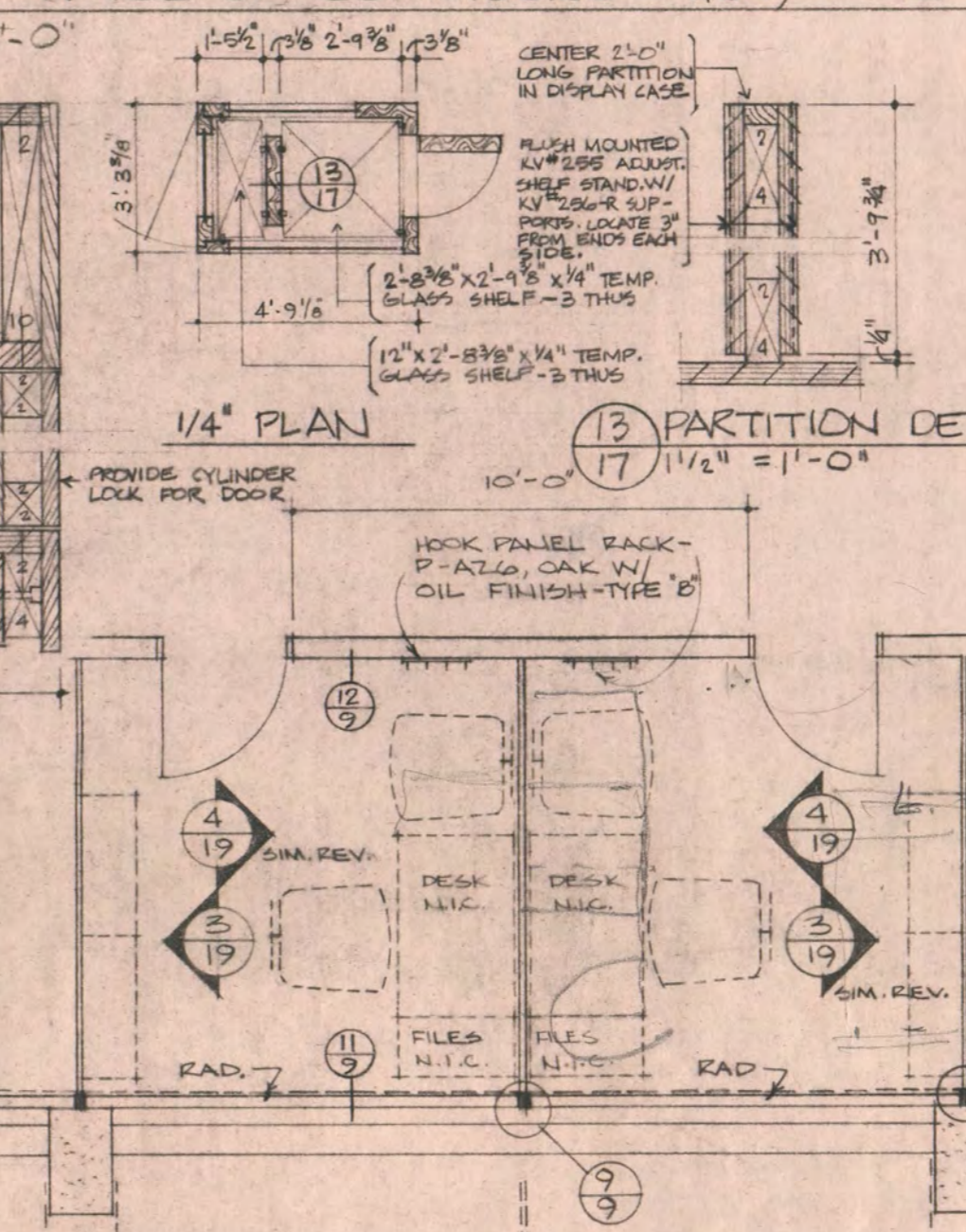
2 WEST WALL ELEVATION OF CORRIDORS A108 + A208
17 1/4" = 1'-0"



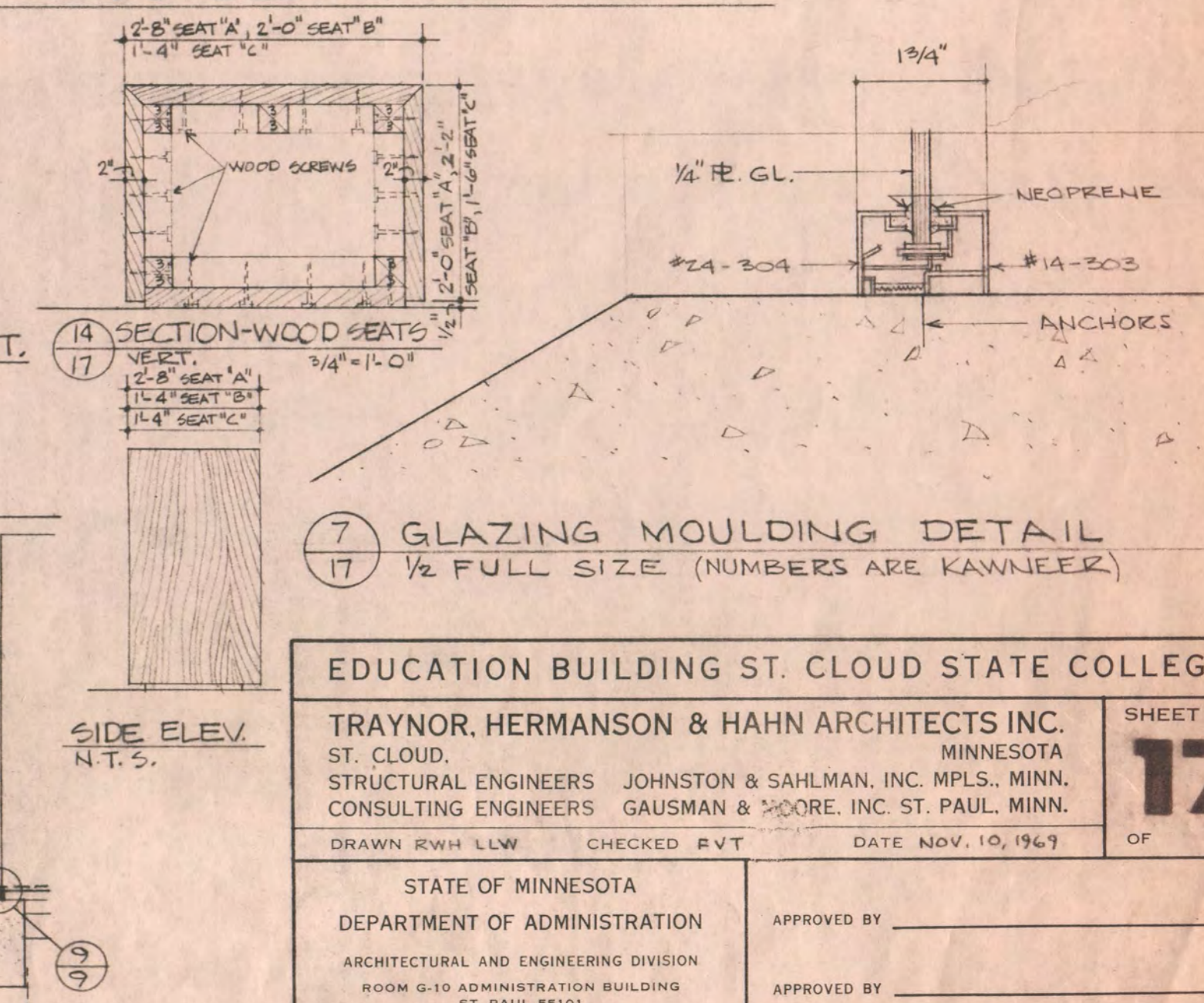
4 EAST WALL OF CORRIDORS A107, A108 + B103 ELEVATION
17 1/4" = 1'-0"



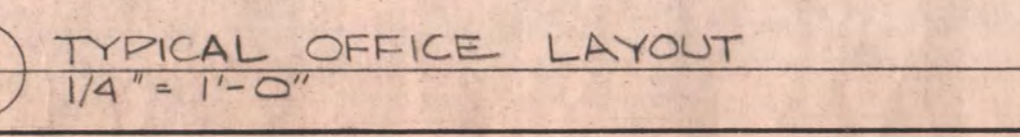
13 1/4" PLAN 17 1/2" = 1'-0"



14 PARTITION DET. 17 1/2" = 1'-0"



15 SECTION-WOOD SEATS 17 1/2" = 1'-0"



8 TYPICAL OFFICE LAYOUT 17 1/4" = 1'-0"

EDUCATION BUILDING ST. CLOUD STATE COLLEGE

TRAYNOR, HERMANSON & HAHN ARCHITECTS INC. SHEET NO. 17

ST. CLOUD, MINNESOTA

STRUCTURAL ENGINEERS JOHNSTON & SAHLMAN, INC. MPLS. MINN.

CONSULTING ENGINEERS GAUSMAN & MOORE, INC. ST. PAUL, MINN.

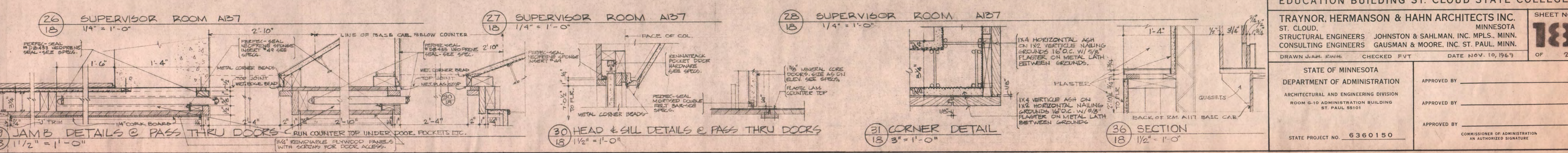
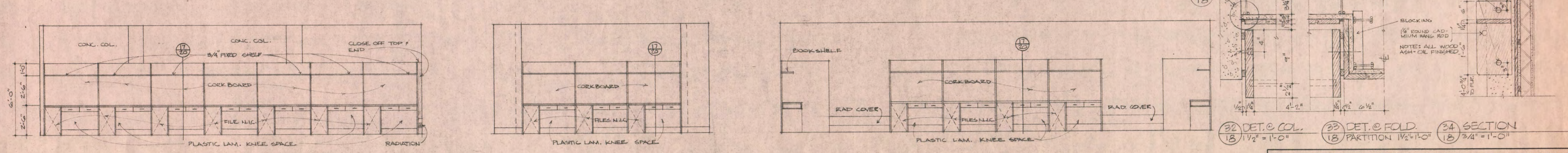
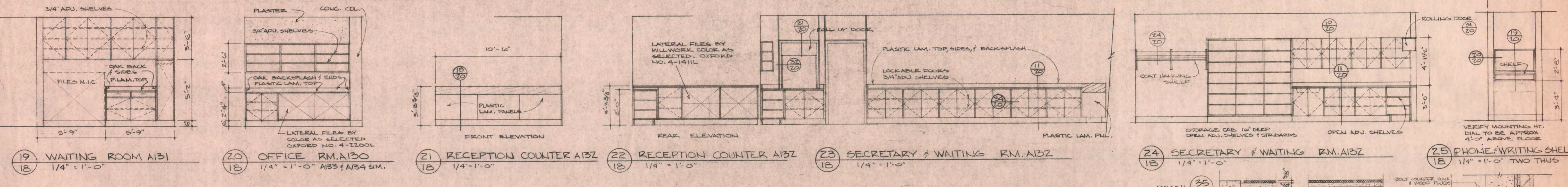
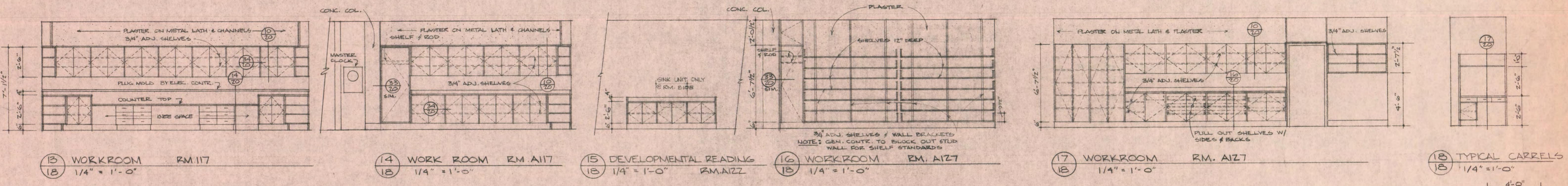
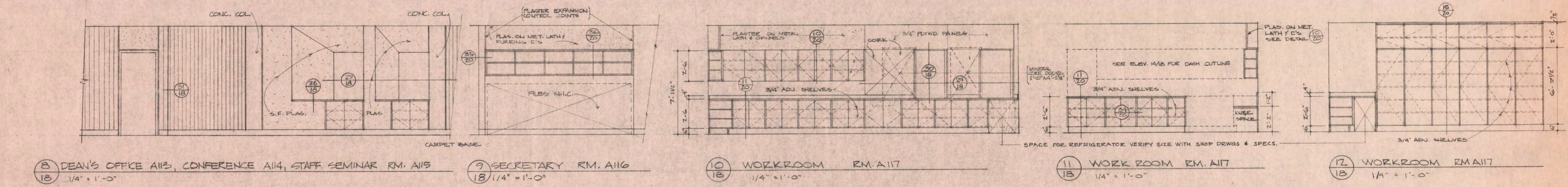
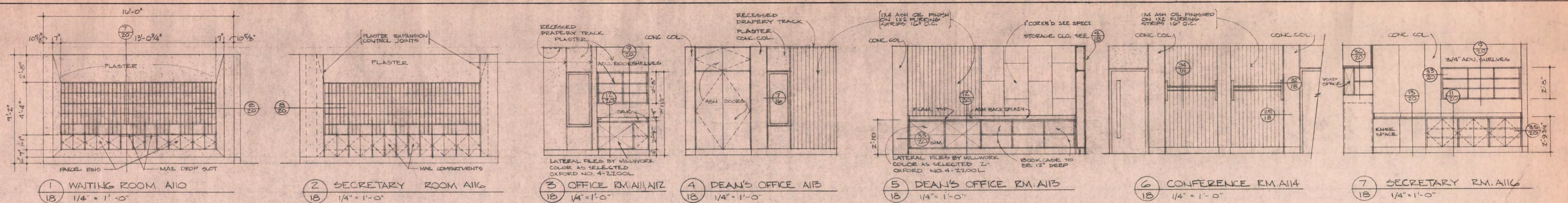
DRAWN RVH LLW CHECKED RVT DATE NOV. 10, 1967 OF 21

STATE OF MINNESOTA DEPARTMENT OF ADMINISTRATION APPROVED BY _____

ARCHITECTURAL AND ENGINEERING DIVISION APPROVED BY _____

ROOM 6.10 ADMINISTRATION BUILDING ST. PAUL 55101 APPROVED BY _____

STATE PROJECT NO. 6360150 COMMISSIONER OF ADMINISTRATION AN AUTHORIZED SIGNATURE



EDUCATION BUILDING ST. CLOUD STATE COLLEGE

TRAYNOR, HERMANSON & HAHN ARCHITECTS INC.
ST. CLOUD, MINNESOTA

STRUCTURAL ENGINEERS JOHNSTON & SAHLMAN, INC. MPLS. MINN.
CONSULTING ENGINEERS GAUSMAN & MOORE, INC. ST. PAUL, MINN.

DRAWN JAH, EAH, CHECKED FVT DATE NOV. 10, 1967

SHEET NO. 183 OF 21

STATE OF MINNESOTA
DEPARTMENT OF ADMINISTRATION
ARCHITECTURAL AND ENGINEERING DIVISION
ROOM 6-10 ADMINISTRATION BUILDING
ST. PAUL 55101

APPROVED BY _____
APPROVED BY _____
APPROVED BY _____

STATE PROJECT NO. 6360150
COMMISSIONER OF ADMINISTRATION
AN AUTHORIZED SIGNATURE