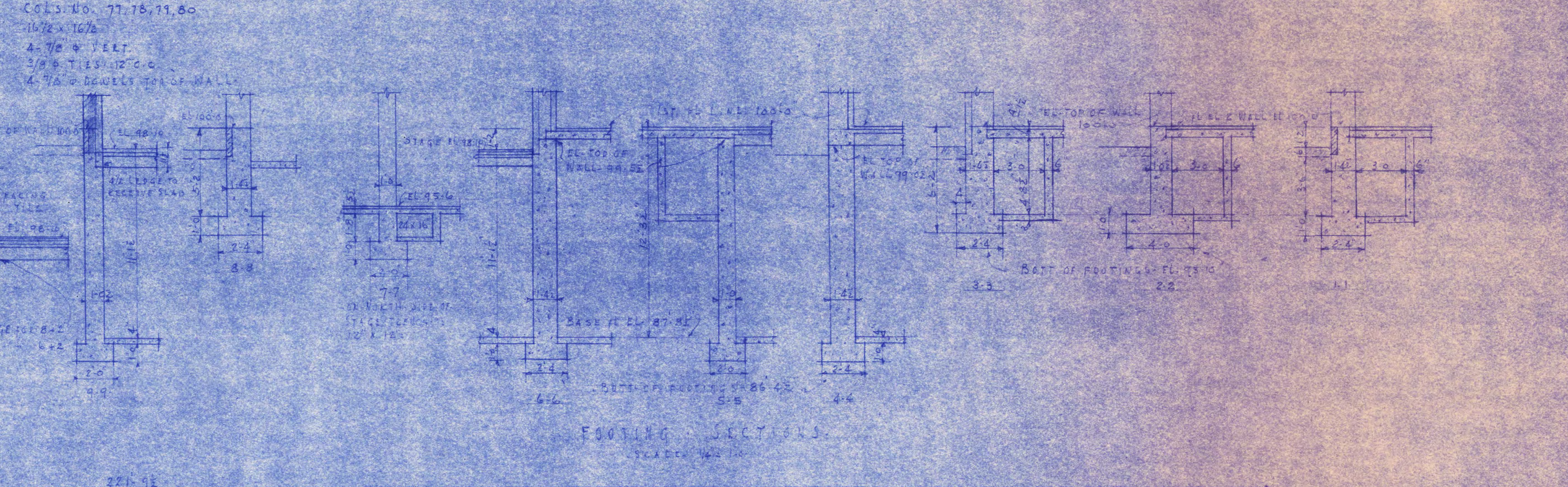


COLUMN SCHEDULE

COLUMN NO.	1, 28	3, 4, 6, 9, 10	5, 6, 7	11, 17-19, 21, 22, 23	14, 15	24	32, 34	33	35	36, 37, 38, 39	40, 41, 42, 43	44	45	46, 47, 48	70-71, 72	73, 74, 75	76
ROOF	12 x 12	12 x 12	12 x 12	12 x 12	12 x 12		16 x 16	16 x 16	12 x 12				12 x 12	12 x 12			
3RD FLOOR	4-3/4" x 4-3/4"	4-3/4" x 4-3/4"	4-3/4" x 4-3/4"	4-5/8" x 4-5/8"	4-5/8" x 4-5/8"		4-3/4" x 4-3/4"	4-3/4" x 4-3/4"	4-3/4" x 4-3/4"				4-3/4" x 4-3/4"	4-3/4" x 4-3/4"			
2ND FLOOR	16 x 16	16 x 16	16 x 16	16 x 16	16 x 16		16 x 16	16 x 16	12 x 12				16 x 16	16 x 16			
1ST FLOOR	30" x 28" x 15"	30" x 28" x 15"	30" x 28" x 15"	30" x 28" x 15"	30" x 28" x 15"		30" x 28" x 15"	30" x 28" x 15"	30" x 28" x 15"				30" x 28" x 15"	30" x 28" x 15"			
BASEMENT	16 x 16	16 x 16	16 x 16	16 x 16	16 x 16		16 x 16	16 x 16	16 x 16				16 x 16	16 x 16			
CAV.	8' x 5' x 12'	8' x 5' x 12'	8' x 5' x 12'	8' x 5' x 12'	8' x 5' x 12'		8' x 5' x 12'	8' x 5' x 12'	8' x 5' x 12'				8' x 5' x 12'	8' x 5' x 12'			
BASE	24 x 24 x 12	24 x 24 x 12	24 x 24 x 12	24 x 24 x 12	24 x 24 x 12		24 x 24 x 12	24 x 24 x 12	24 x 24 x 12				24 x 24 x 12	24 x 24 x 12			
EX. WAY	EA. WAY	EA. WAY	EA. WAY	EA. WAY	EA. WAY		EA. WAY	EA. WAY	EA. WAY				EA. WAY	EA. WAY			

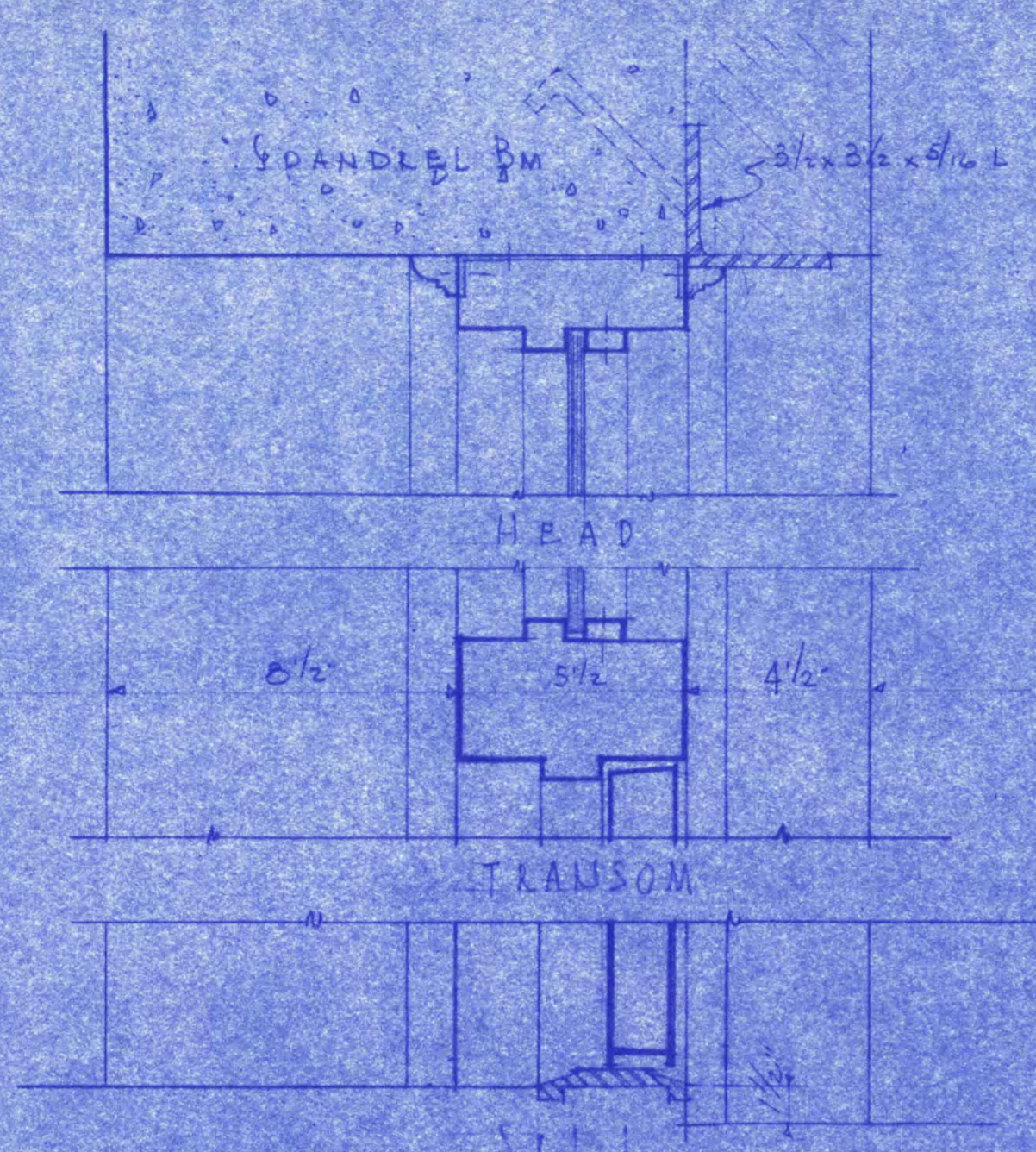


FOOTING AND FOUNDATION PLAN
Scale - 1/4" = 1'-0"

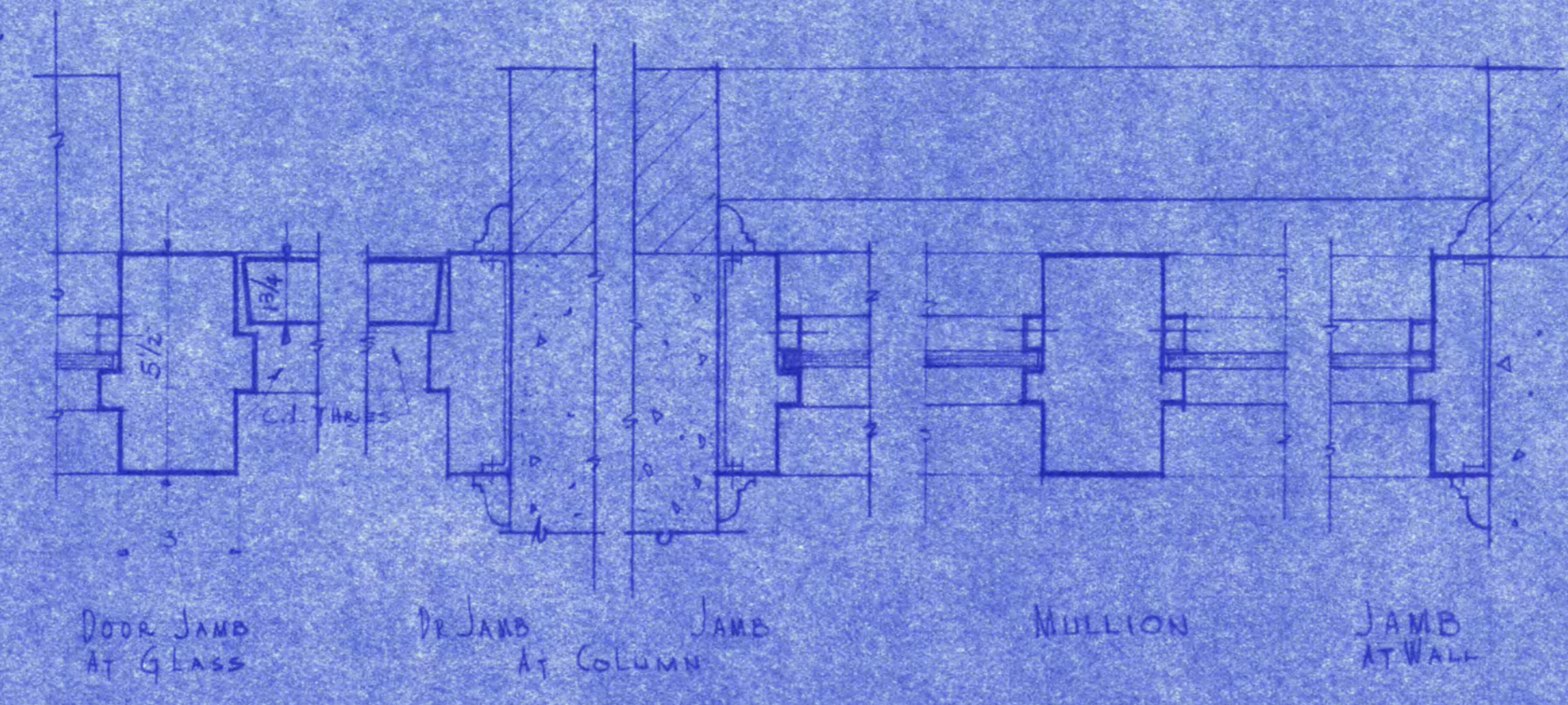
MAIN BUILDING & AUDITORIUM
OR
STATE TEACHERS COLLEGE
SAINT CLOUD, MINN.
DEPT. OF ADMINISTRATION — STATE OF MINNESOTA
SAINT PAUL, MINN.

DATE: J.C. PINAULT & FRANK W. JOHNSON, ARCHTS. SHEET NO. 4
D.E.C. ELLERBE & CO. CONSULTING ARCHITECTS SAINT PAUL, MINN. 4
REVISED: FEB. 1922 23
APPROVED BY: PRES. OF ST. CLOUD TEACHERS COLLEGE
DRAWN BY: AN UNIDENTIFIED ENGINEER
APPROVED BY: COMMISSIONER OF ADMINISTRATION AN UNIDENTIFIED ENGINEER 339

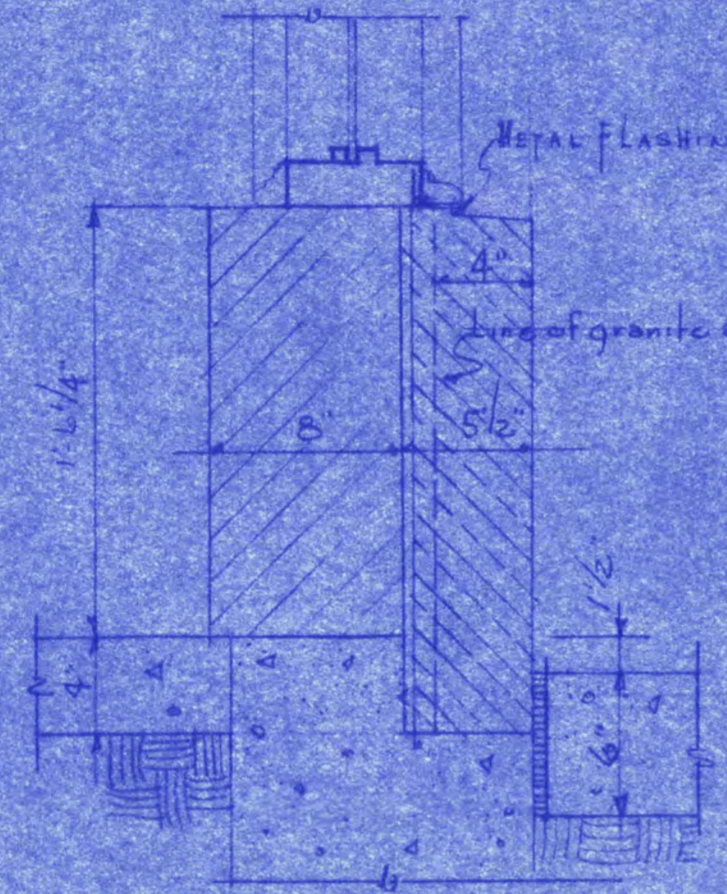
Continuous Retaining walls to back approx. 25' from 1/2" pipe rail. East face of wall.



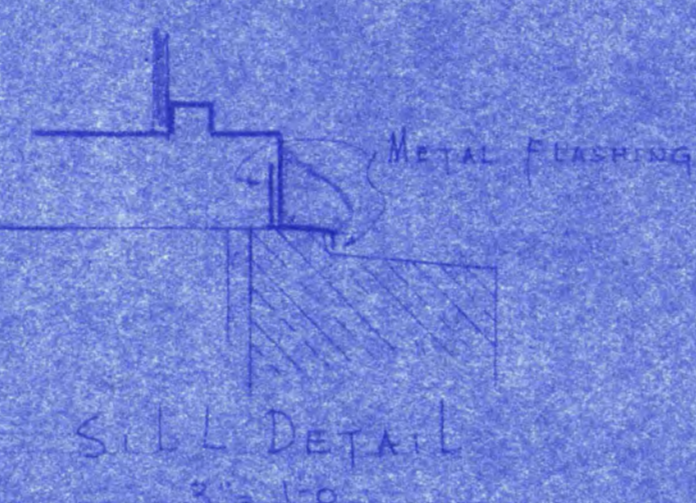
DOOR SECTION
Doors # b10 + b19
Scale 3/4" = 1'-0"



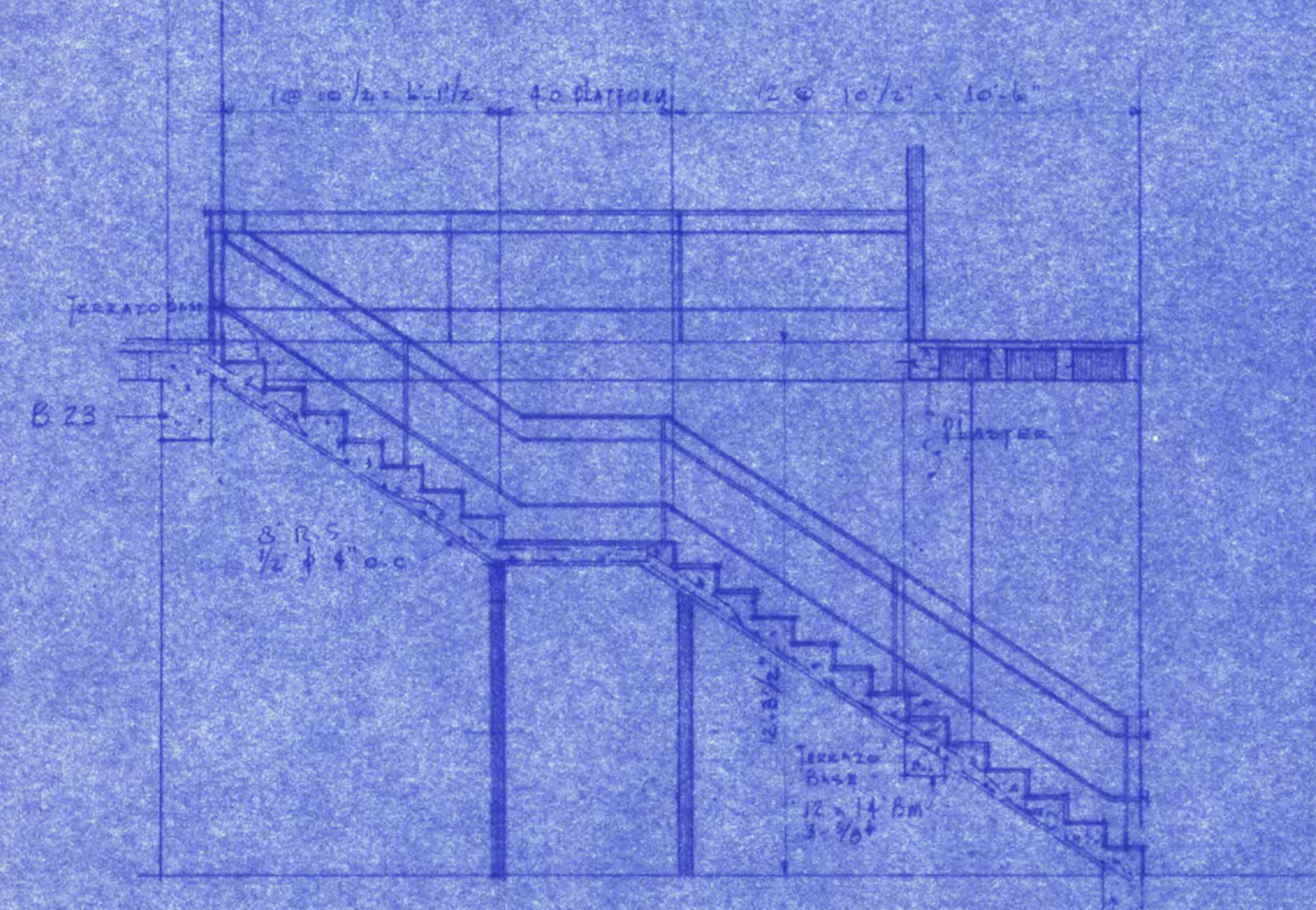
WINDOW DETAILS - WDS # B15-B16-B17
Scale 3/4" = 1'-0"



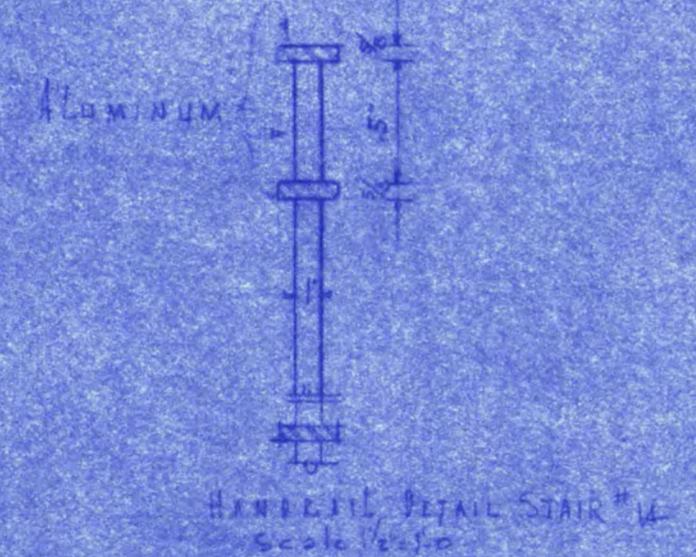
SILL SECTION
Scale 1 1/2" = 1'-0"



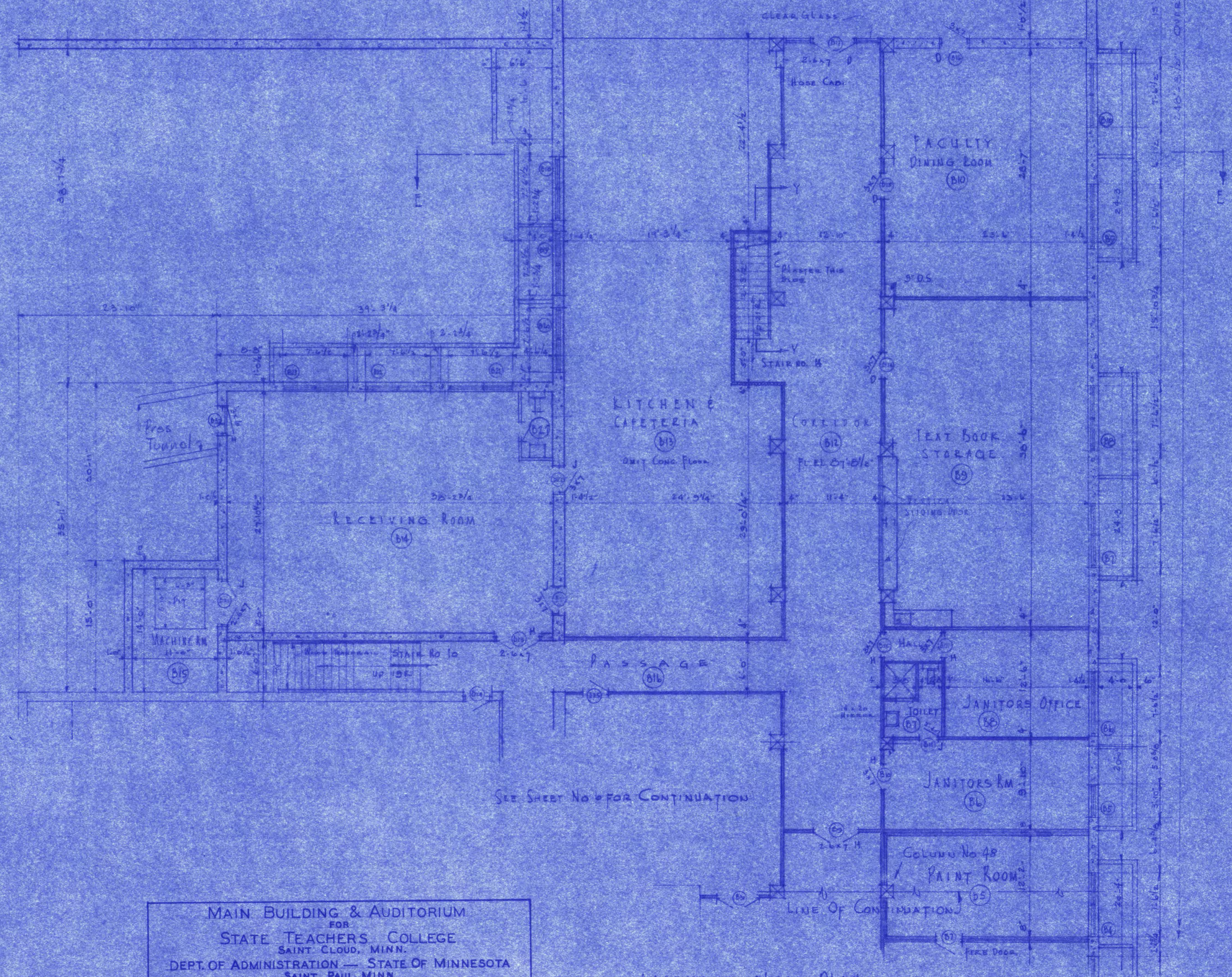
SILL DETAIL
3/4" = 1'-0"



SECTION Y-Y - STAIR NO. 14
Scale 1/4" = 1'-0"



HORIZONTAL DETAIL STAIR
Scale 1/2" = 1'-0"



SEE SHEET NO. 338 FOR CONTINUATION

BASEMENT FLOOR PLAN
Scale 1/8" = 1'-0"

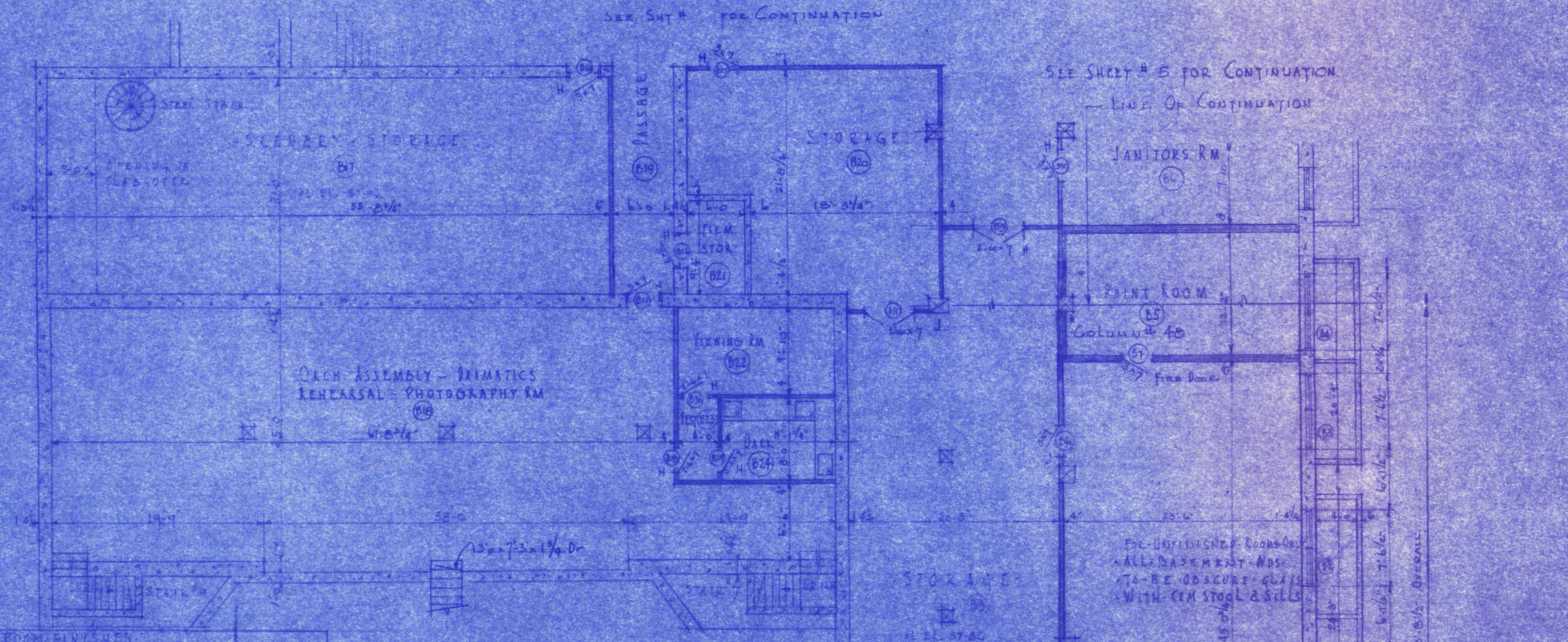
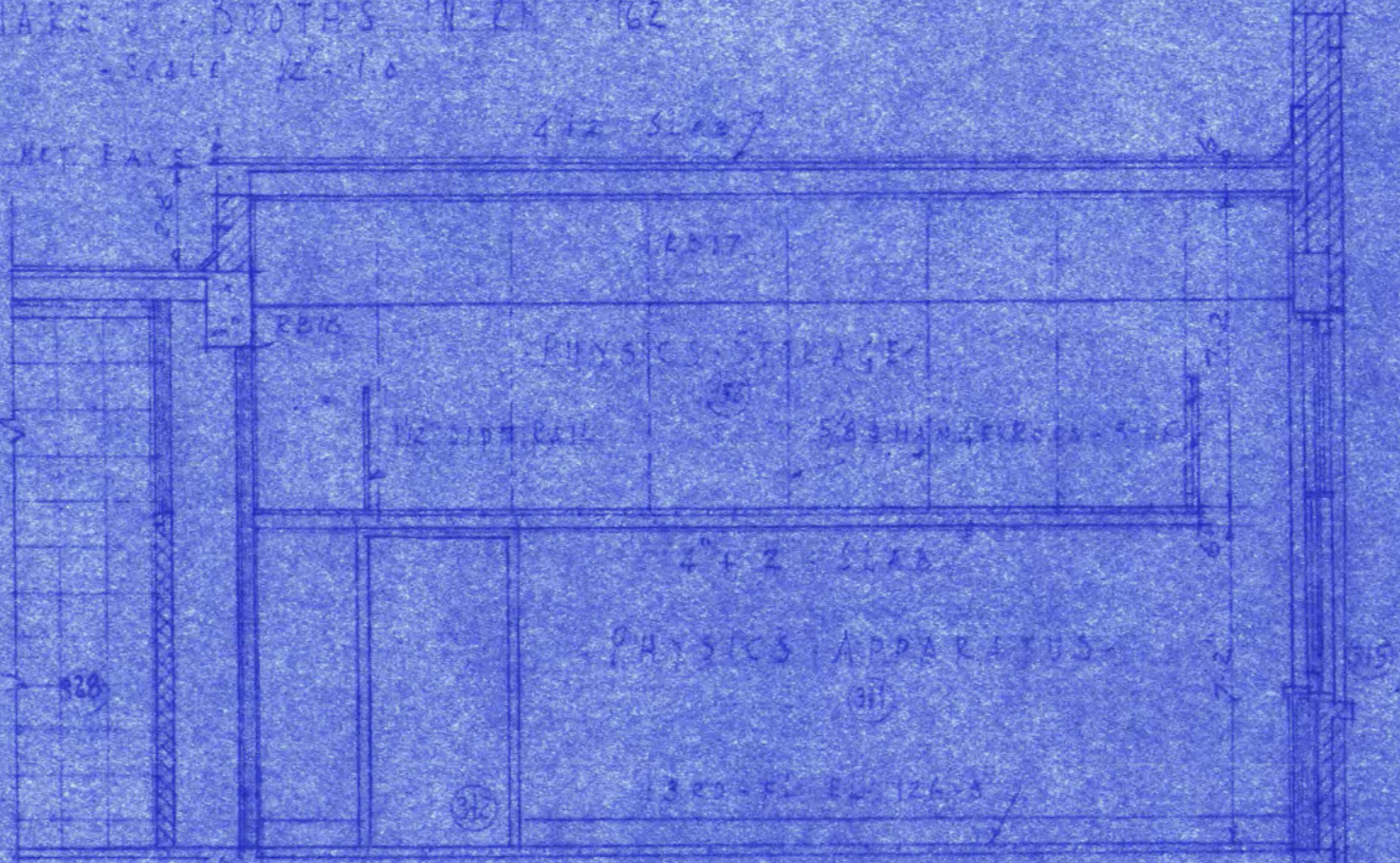
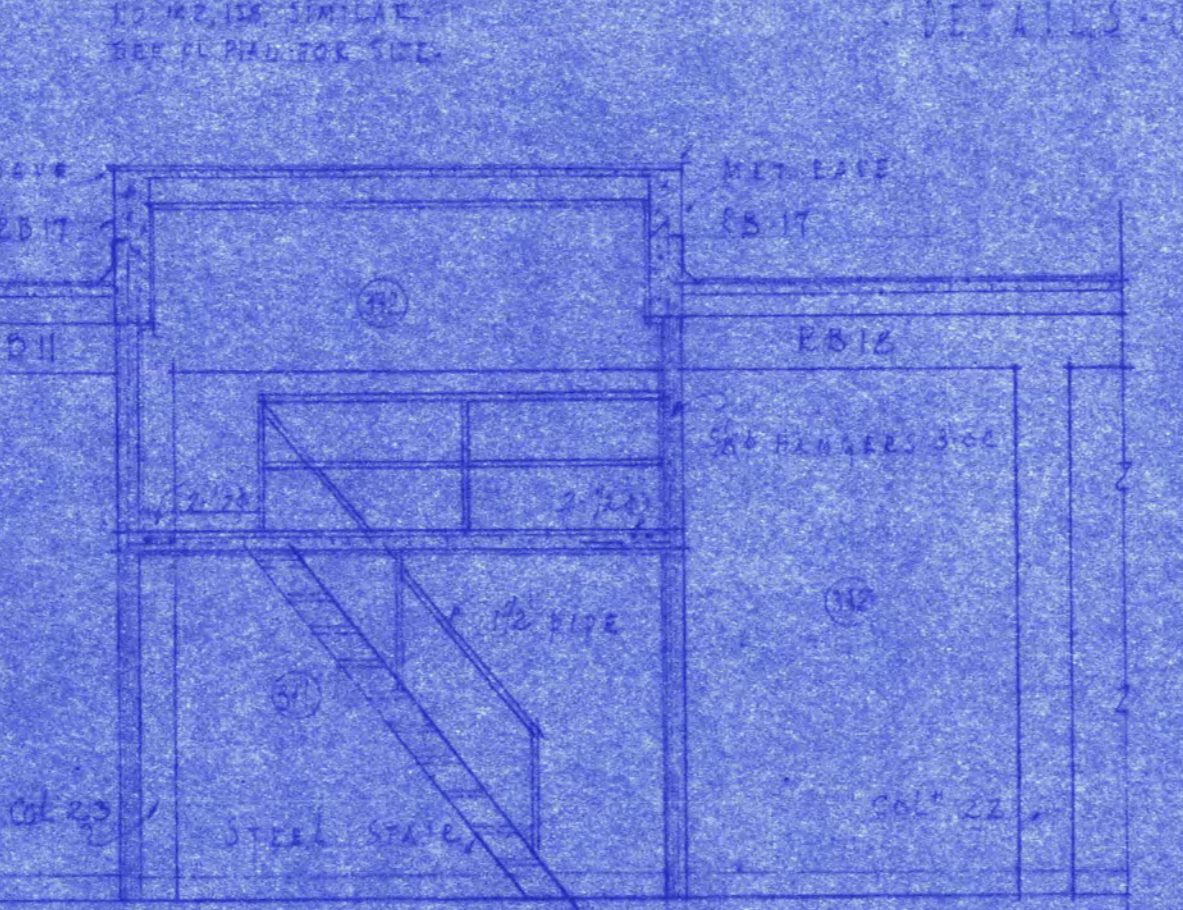
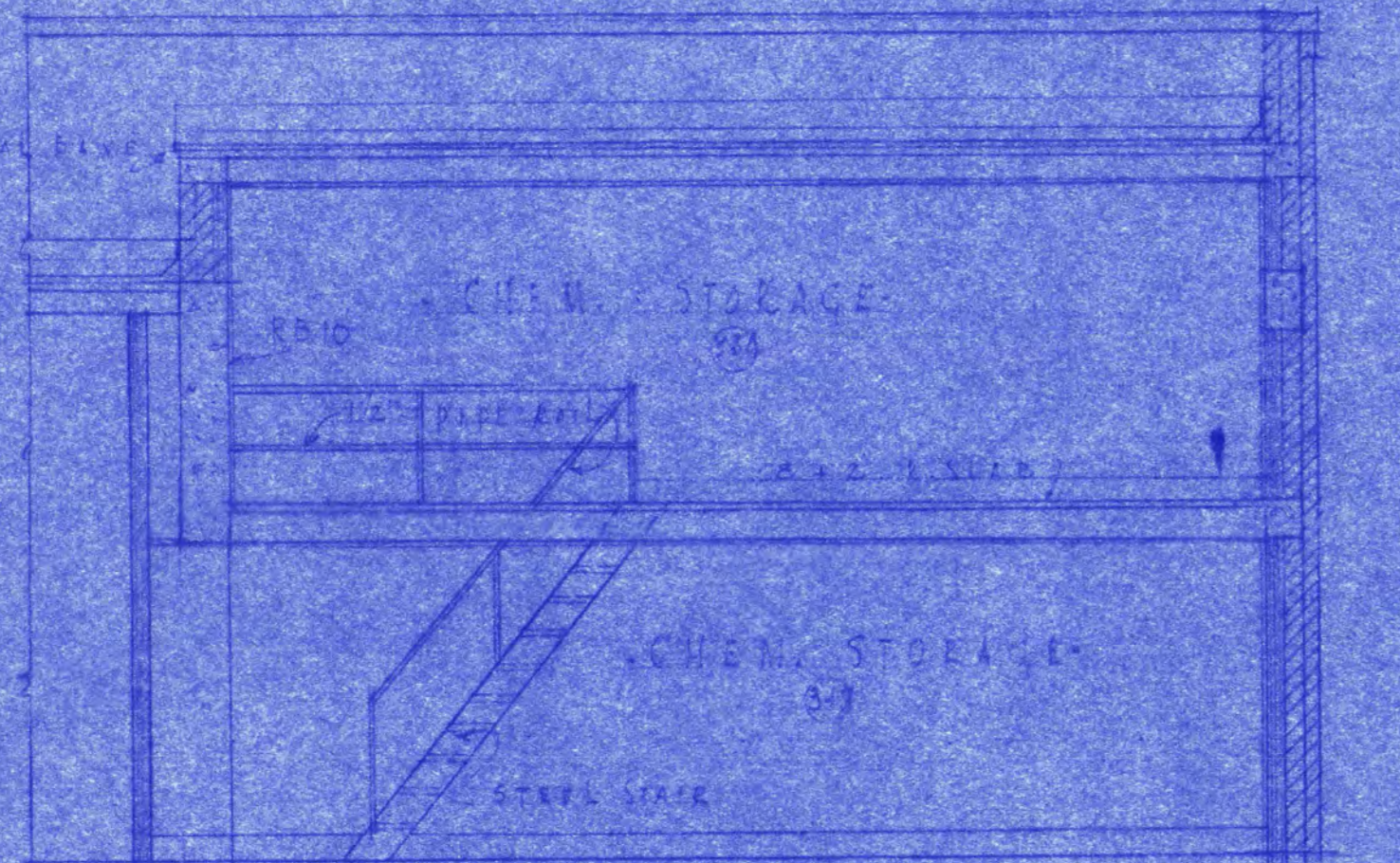
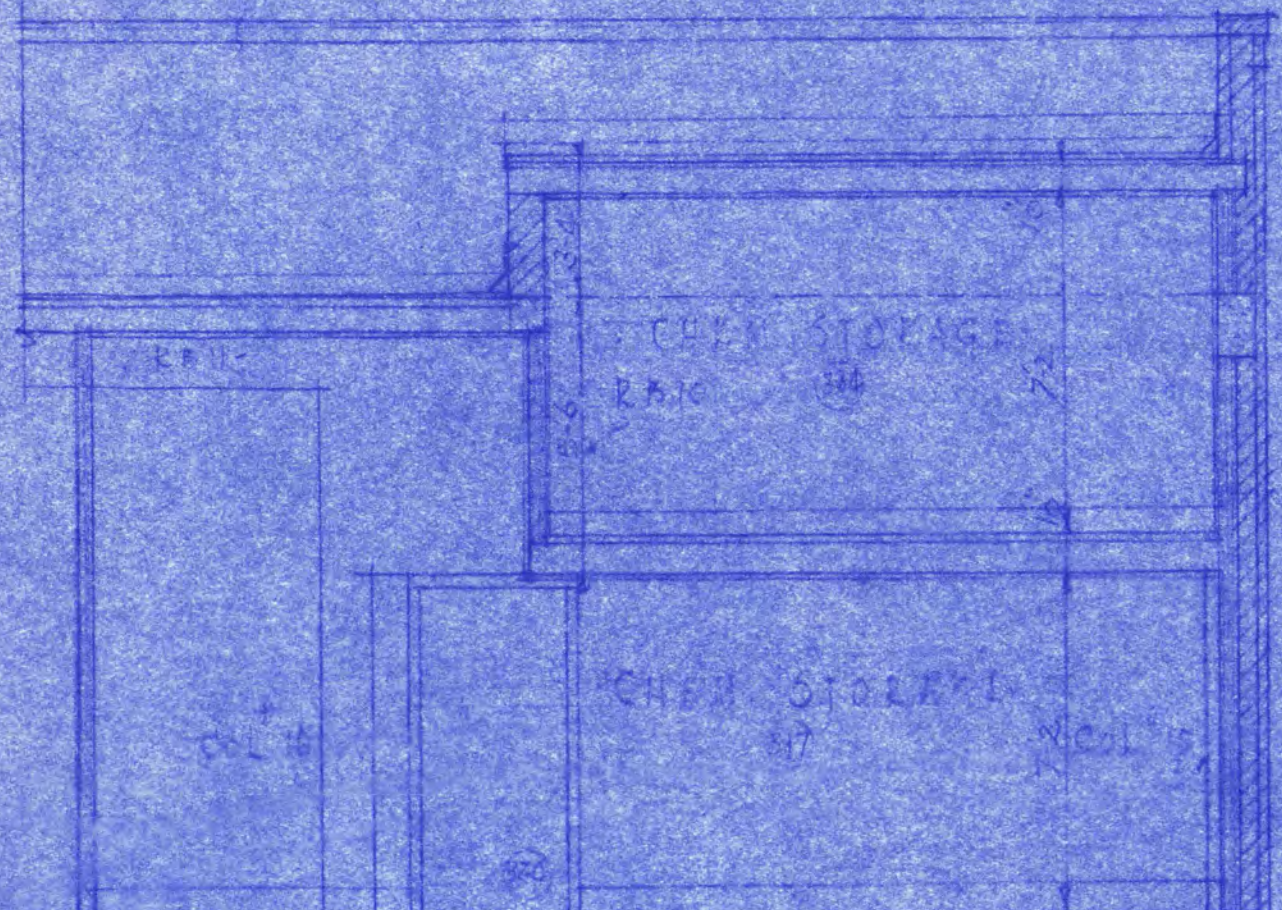
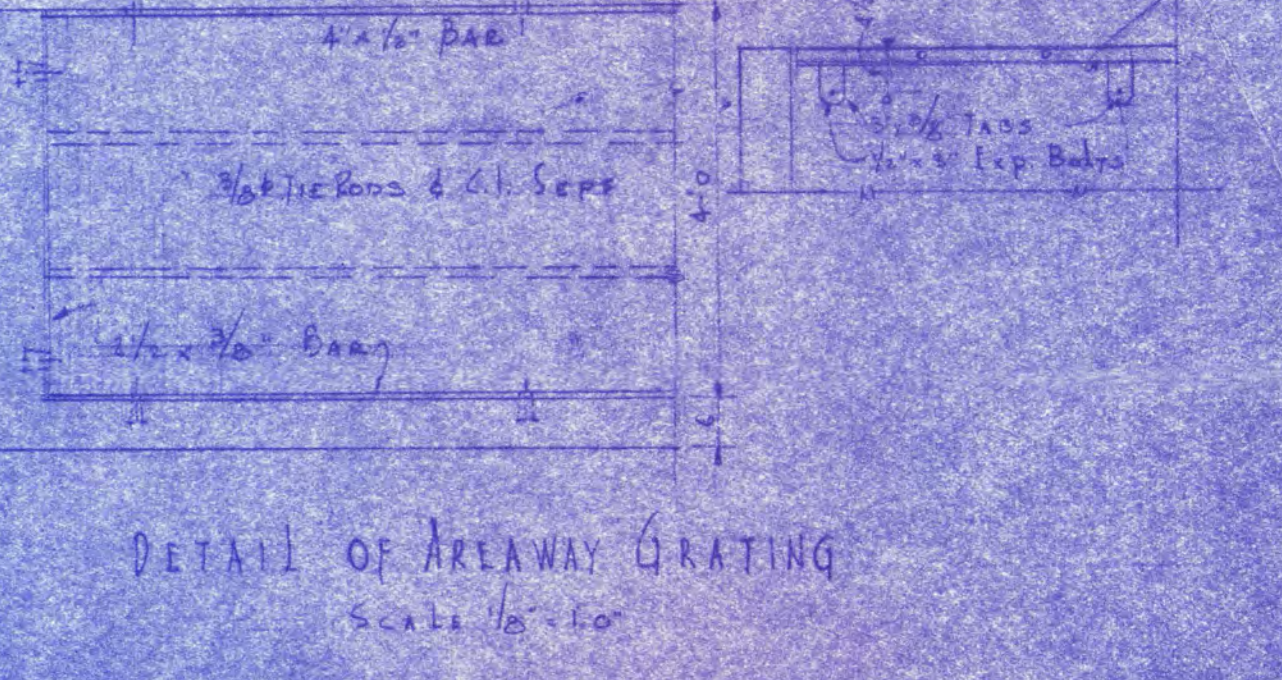
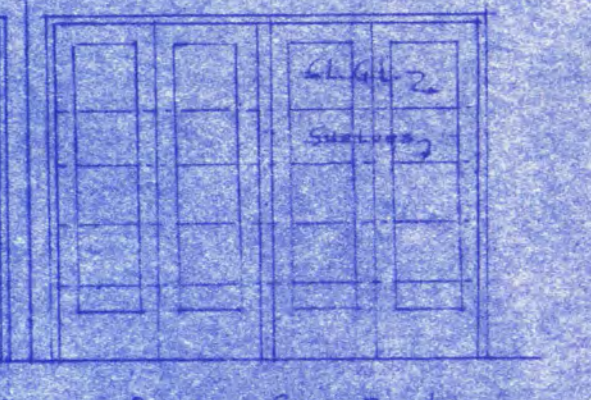
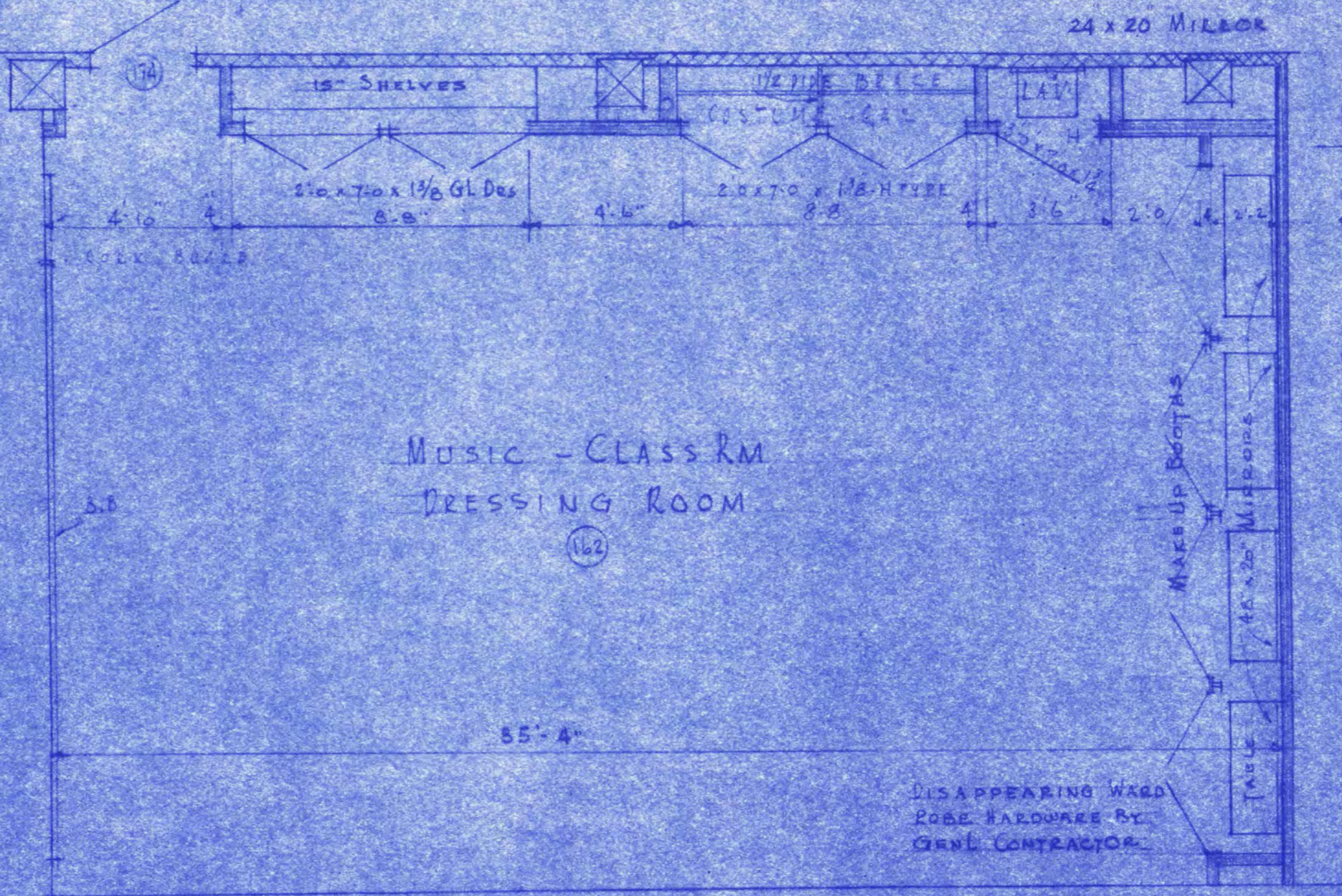
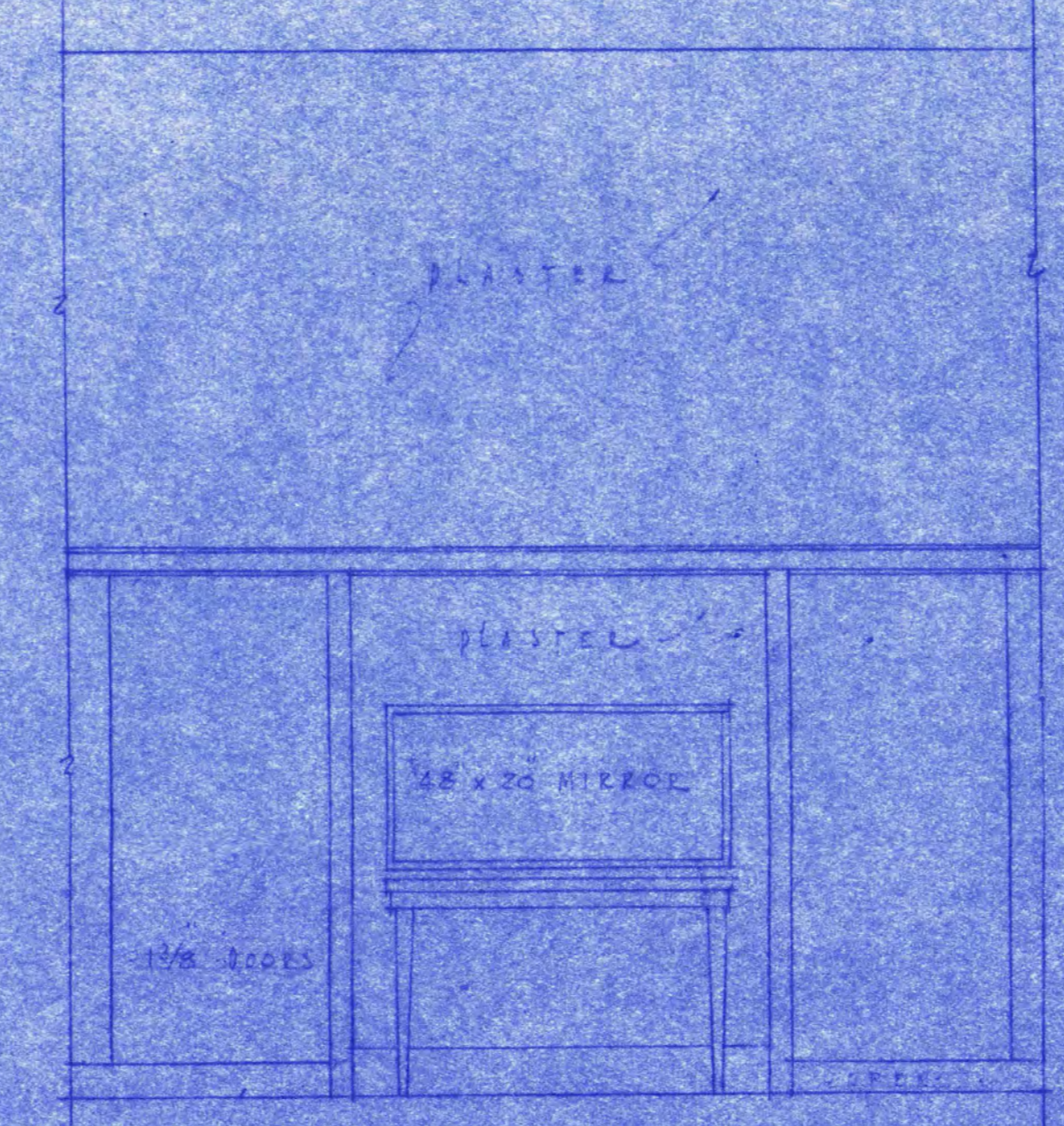
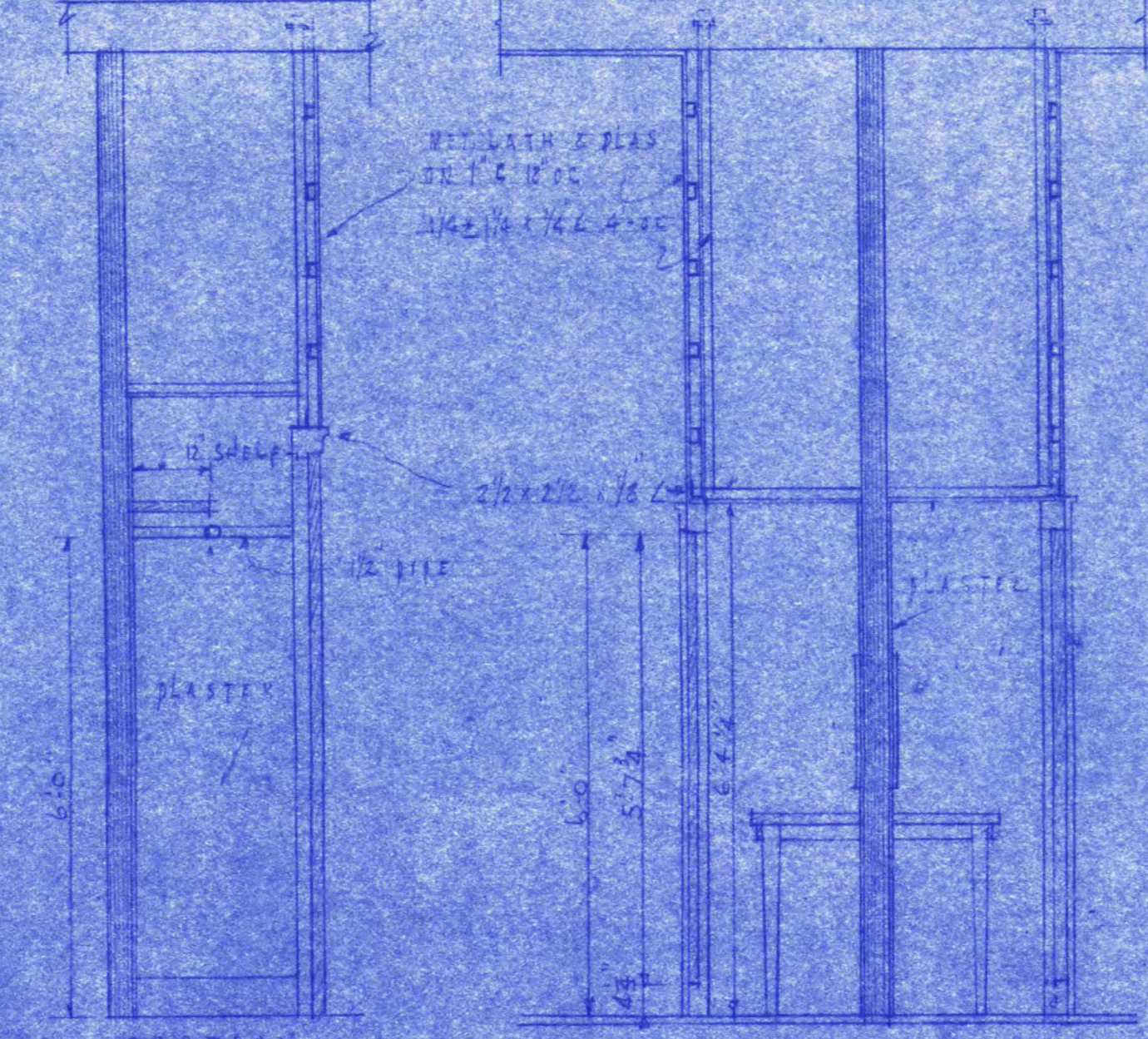
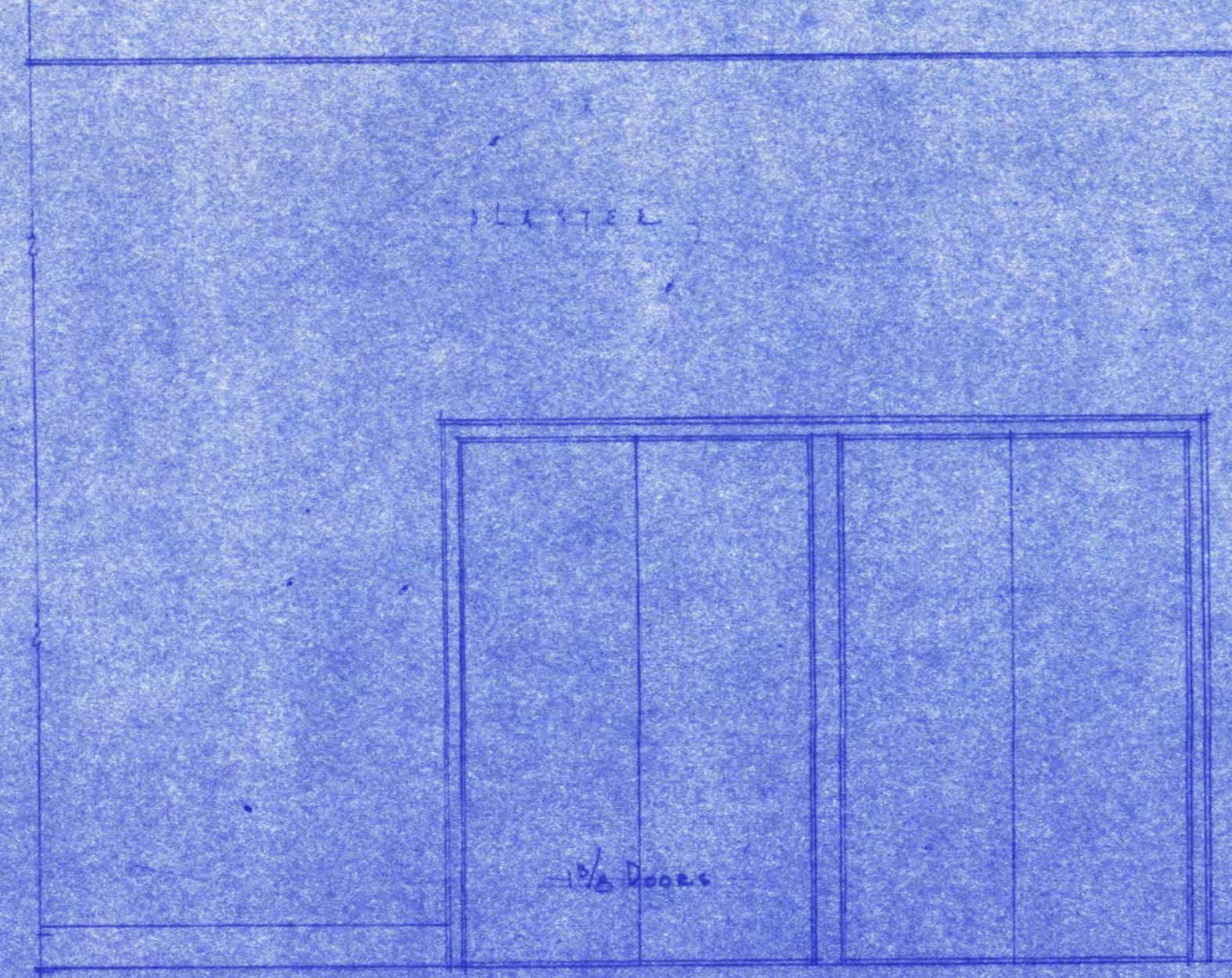
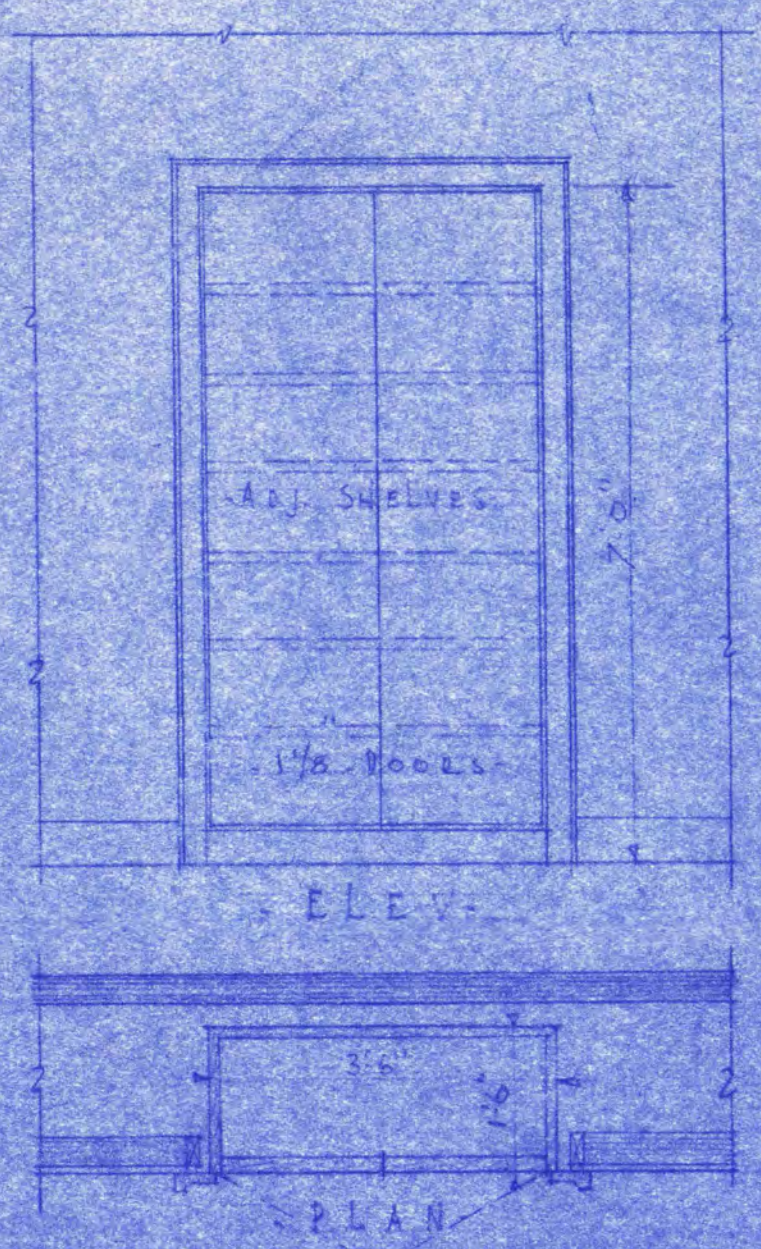
ROOM NO.	SCHEDULE OF ROOM FINISHES										REMARKS	
	FLOOR	BASE	WALLS	CEILING	TRIM	DOOR	WALLS	CEILING	TRIM	TRIM		
b5	V											
b6	V	V	V	V	V	V	V	V	V	V	V	
b7	V	V	V	V	V	V	V	V	V	V	V	
b8	V	V	V	V	V	V	V	V	V	V	V	FINISH HALL SAME AS b8
b9-b10	V	V	V	V	V	V	V	V	V	V	V	
b11	V	V	V	V	V	V	V	V	V	V	V	
b12	V	V	V	V	V	V	V	V	V	V	V	
b13	V	V	V	V	V	V	V	V	V	V	V	
b14-b15	V	V	V	V	V	V	V	V	V	V	V	
b16	V	V	V	V	V	V	V	V	V	V	V	
b17	V	V	V	V	V	V	V	V	V	V	V	

MAIN BUILDING & AUDITORIUM
FOR
STATE TEACHERS COLLEGE
SAINT CLOUD, MINN.
DEPT. OF ADMINISTRATION - STATE OF MINNESOTA
SAINT PAUL, MINN.

DATE: FEB 1947
DESIGNED BY: I.C. PINAULT & FRANK W. JACKSON, ASSOC. ARCHTS., SAINT CLOUD, MINN.
DRAWN BY: ELLERBE & CO., CONSULTING ARCHITECTS, SAINT PAUL, MINN.

APPROVED BY: PRES. OF STATE TEACHERS COLLEGE BOARD
APPROVED BY: PRES. OF STATE TEACHERS COLLEGE
APPROVED BY: COMMISSIONER OF ADMINISTRATION, AN AUTHORIZED SIGNATURE

SHEET NO. 5 of 23
CONTRACT NO. 339



PLAN DET. OF CLASS ROOM CASE

TYPICAL ELEVATION

SECTION

ELEVATION

Music - CLASS RM
DRESSING ROOM

ELEV. - DOOR WITH TRANSOM

DETAIL OF ARAWAY GRATING

SECTION

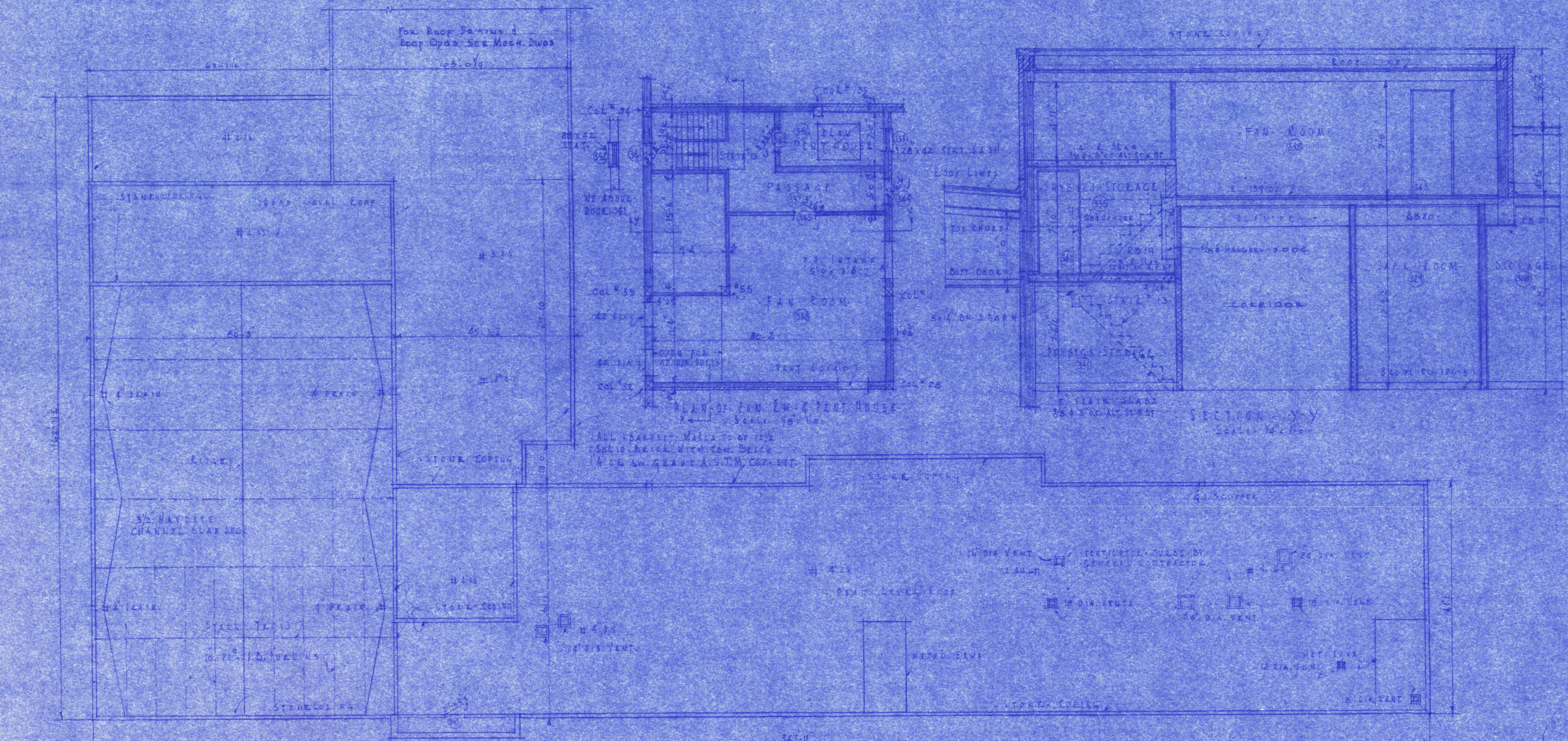
SECTION

SECTION

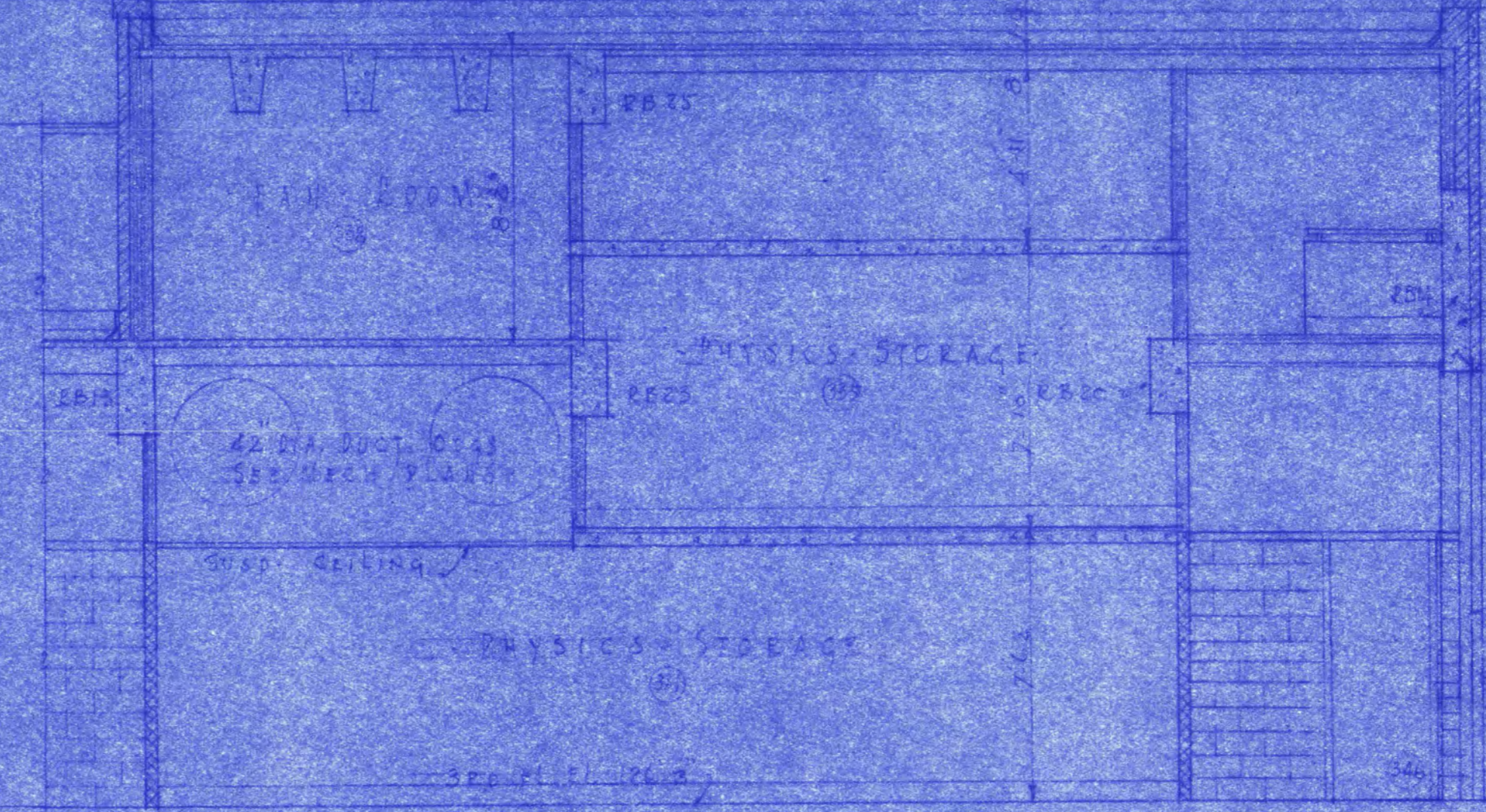
SECTION

SEE SHEET # E FOR CONTINUATION

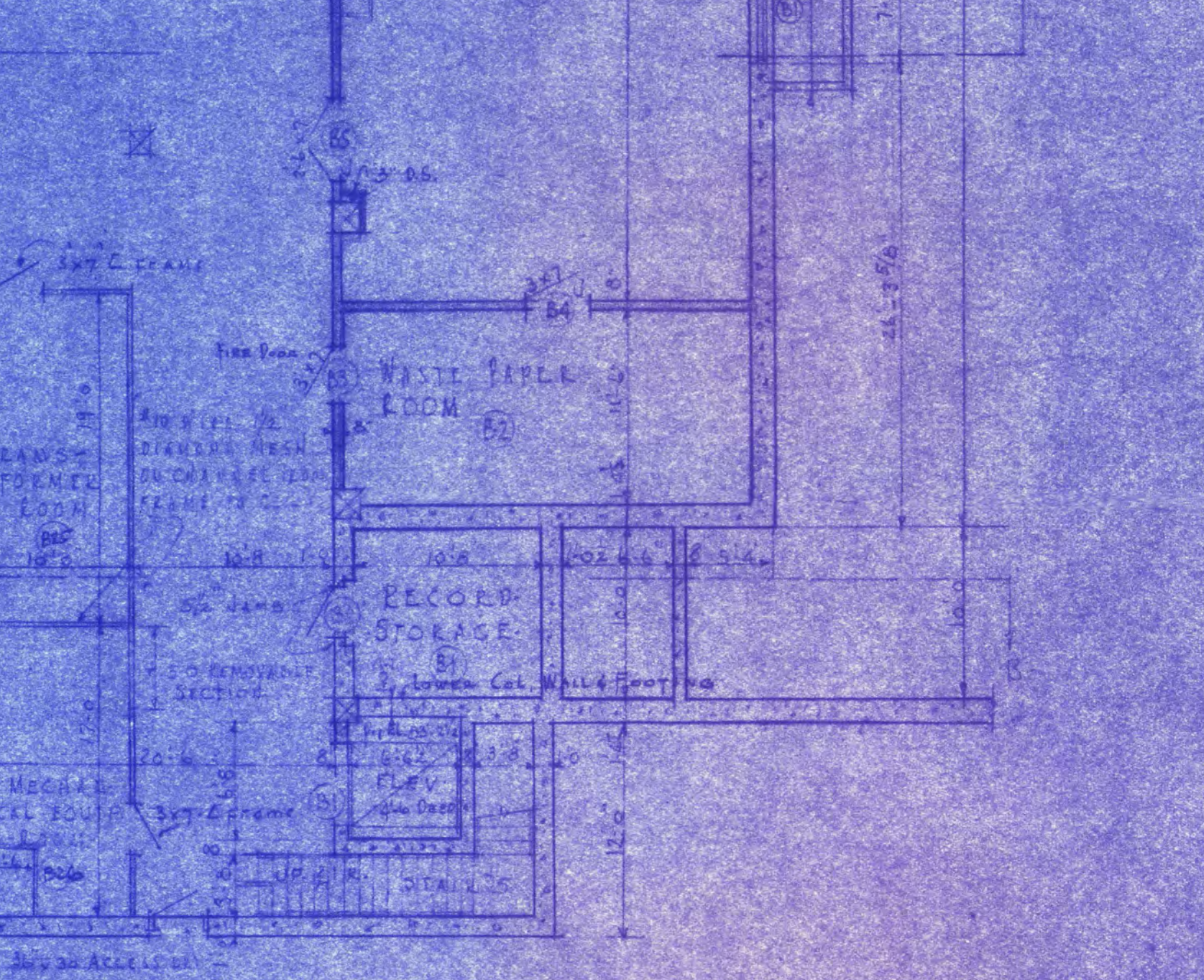
SEE SHEET # F FOR CONTINUATION



Room No.	CONCRETE	BRICK	GLASS	WOOD	METAL	STONE	PLASTER	PAINT	CEILING	FLOORING	FINISHES
11-111-1-100	Y	Y	Y	Y	Y	Y	Y	Y	Y	Y	Y
11-111-1-101	Y	Y	Y	Y	Y	Y	Y	Y	Y	Y	Y
11-111-1-102	Y	Y	Y	Y	Y	Y	Y	Y	Y	Y	Y
11-111-1-103	Y	Y	Y	Y	Y	Y	Y	Y	Y	Y	Y
11-111-1-104	Y	Y	Y	Y	Y	Y	Y	Y	Y	Y	Y
11-111-1-105	Y	Y	Y	Y	Y	Y	Y	Y	Y	Y	Y



SECTION	FINISHES
CONCRETE	PLAIN
BRICK	PLAIN
GLASS	PLAIN
WOOD	PLAIN
METAL	PLAIN
STONE	PLAIN
PLASTER	PLAIN
PAINT	PLAIN
CEILING	PLAIN
FLOORING	PLAIN



PLAN OF MAIN BUILDING

SECTION XX

SECTION XX

BASEMENT PLAN

MAIN BUILDING & AUDITORIUM
FOR
STATE TEACHERS COLLEGE
SAINT CLOUD, MINN.
DEPT. OF ADMINISTRATION - STATE OF MINNESOTA
SAINT PAUL, MINN.

DATE	APR 1942	BY	L.C. RINGOLD	SHEET NO.	25
DATE	MAY 1942	BY	ELLERBE & CO.	CONTRACT NO.	339
DATE	MAY 1942	BY	APPROVED BY		
DATE	MAY 1942	BY	APPROVED BY		
DATE	MAY 1942	BY	APPROVED BY		