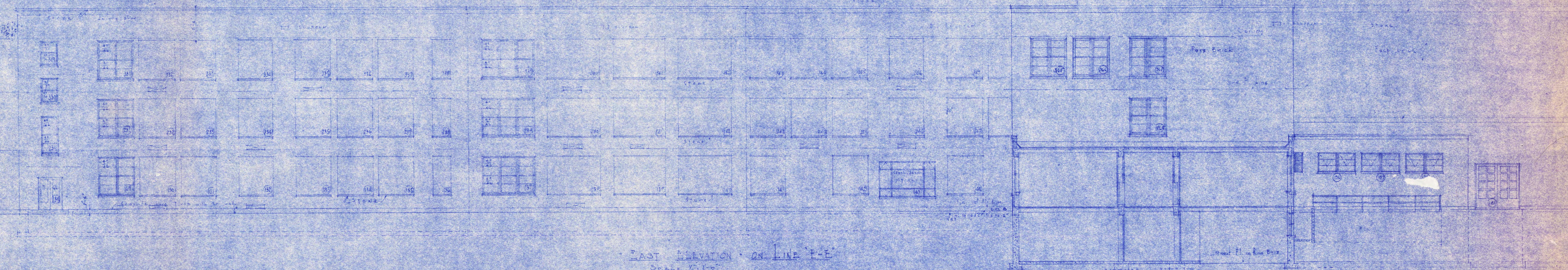
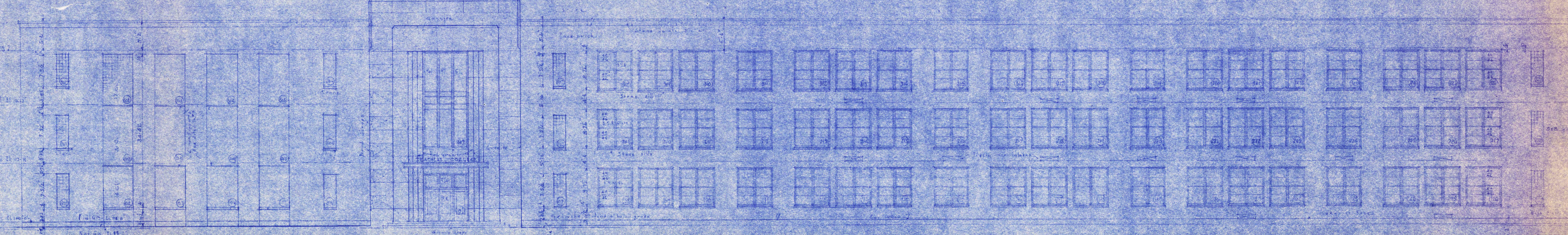


NORTH ELEVATION
Scale 1/8" = 1'-0"



EAST ELEVATION ON LINE F-E
Scale 1/8" = 1'-0"



WEST ELEVATION
Scale 1/8" = 1'-0"

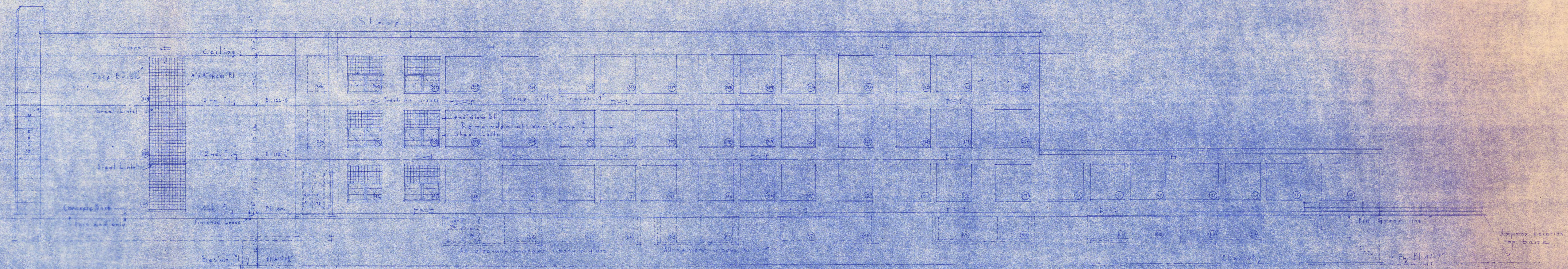
GENERAL NOTES	1
CONTRACT CONDITIONS	2
GENERAL SPECIFICATIONS	3
GENERAL NOTES	4
CONTRACT CONDITIONS	5
GENERAL SPECIFICATIONS	6
GENERAL NOTES	7
CONTRACT CONDITIONS	8
GENERAL SPECIFICATIONS	9
GENERAL NOTES	10
CONTRACT CONDITIONS	11
GENERAL SPECIFICATIONS	12
GENERAL NOTES	13
CONTRACT CONDITIONS	14
GENERAL SPECIFICATIONS	15
GENERAL NOTES	16
CONTRACT CONDITIONS	17
GENERAL SPECIFICATIONS	18
GENERAL NOTES	19
CONTRACT CONDITIONS	20
GENERAL SPECIFICATIONS	21
GENERAL NOTES	22
CONTRACT CONDITIONS	23
GENERAL SPECIFICATIONS	24
GENERAL NOTES	25
CONTRACT CONDITIONS	26
GENERAL SPECIFICATIONS	27
GENERAL NOTES	28
CONTRACT CONDITIONS	29
GENERAL SPECIFICATIONS	30
GENERAL NOTES	31
CONTRACT CONDITIONS	32
GENERAL SPECIFICATIONS	33
GENERAL NOTES	34
CONTRACT CONDITIONS	35
GENERAL SPECIFICATIONS	36
GENERAL NOTES	37
CONTRACT CONDITIONS	38
GENERAL SPECIFICATIONS	39
GENERAL NOTES	40
CONTRACT CONDITIONS	41
GENERAL SPECIFICATIONS	42
GENERAL NOTES	43
CONTRACT CONDITIONS	44
GENERAL SPECIFICATIONS	45
GENERAL NOTES	46
CONTRACT CONDITIONS	47
GENERAL SPECIFICATIONS	48
GENERAL NOTES	49
CONTRACT CONDITIONS	50
GENERAL SPECIFICATIONS	51
GENERAL NOTES	52
CONTRACT CONDITIONS	53
GENERAL SPECIFICATIONS	54
GENERAL NOTES	55
CONTRACT CONDITIONS	56
GENERAL SPECIFICATIONS	57
GENERAL NOTES	58
CONTRACT CONDITIONS	59
GENERAL SPECIFICATIONS	60
GENERAL NOTES	61
CONTRACT CONDITIONS	62
GENERAL SPECIFICATIONS	63
GENERAL NOTES	64
CONTRACT CONDITIONS	65
GENERAL SPECIFICATIONS	66
GENERAL NOTES	67
CONTRACT CONDITIONS	68
GENERAL SPECIFICATIONS	69
GENERAL NOTES	70
CONTRACT CONDITIONS	71
GENERAL SPECIFICATIONS	72
GENERAL NOTES	73
CONTRACT CONDITIONS	74
GENERAL SPECIFICATIONS	75
GENERAL NOTES	76
CONTRACT CONDITIONS	77
GENERAL SPECIFICATIONS	78
GENERAL NOTES	79
CONTRACT CONDITIONS	80
GENERAL SPECIFICATIONS	81
GENERAL NOTES	82
CONTRACT CONDITIONS	83
GENERAL SPECIFICATIONS	84
GENERAL NOTES	85
CONTRACT CONDITIONS	86
GENERAL SPECIFICATIONS	87
GENERAL NOTES	88
CONTRACT CONDITIONS	89
GENERAL SPECIFICATIONS	90
GENERAL NOTES	91
CONTRACT CONDITIONS	92
GENERAL SPECIFICATIONS	93
GENERAL NOTES	94
CONTRACT CONDITIONS	95
GENERAL SPECIFICATIONS	96
GENERAL NOTES	97
CONTRACT CONDITIONS	98
GENERAL SPECIFICATIONS	99
GENERAL NOTES	100

BOX 10

MAIN BUILDING & AUDITORIUM
STATE TEACHERS COLLEGE
 SAINT CLOUD, MINN.
 DEPT. OF ADMINISTRATION STATE OF MINNESOTA
 SAINT PAUL, MINN.

DATE: DEC. 1941
 DRAWN BY: L. C. PINABELL & FRANK W. JACKSON, ASSOC. ARCHTS., SAINT PAUL, MINN.
 REVISION: FEB. 1942
 APPROVED BY: PRES. OF ST. CLOUD TEACHERS COLLEGE
 APPROVED BY: COMMISSIONER OF ADMINISTRATION, AN AUTHORIZED SIGNATURE

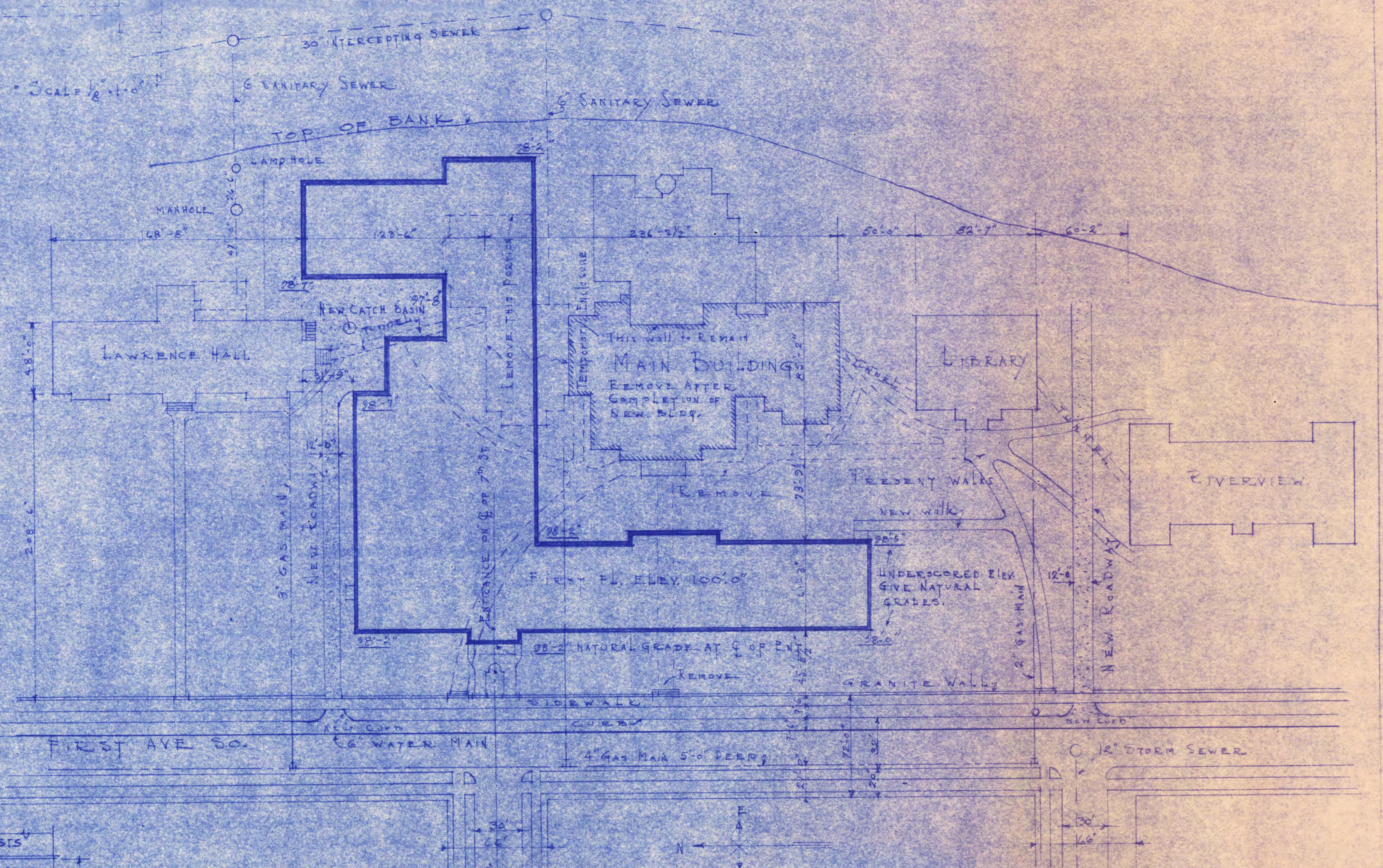
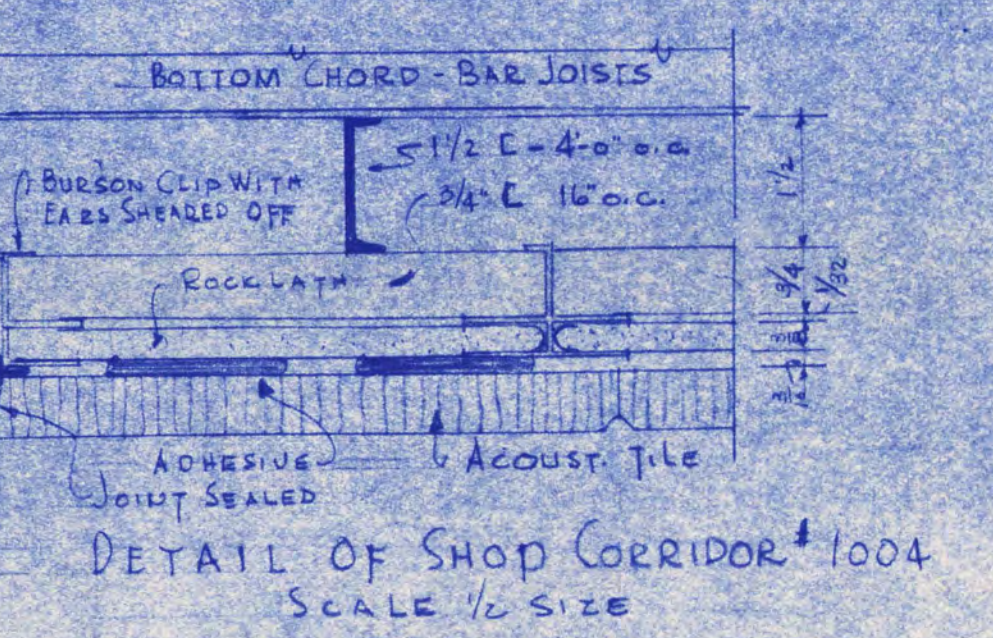
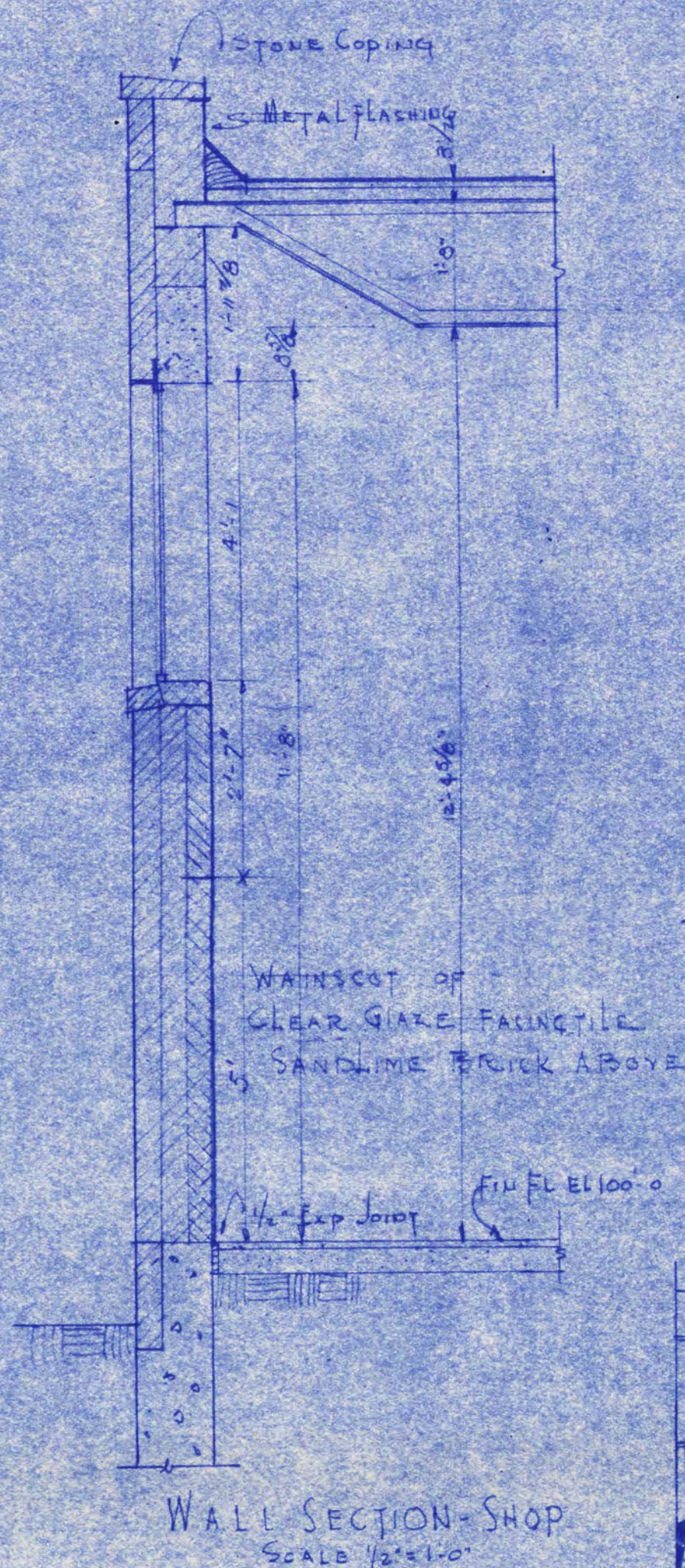
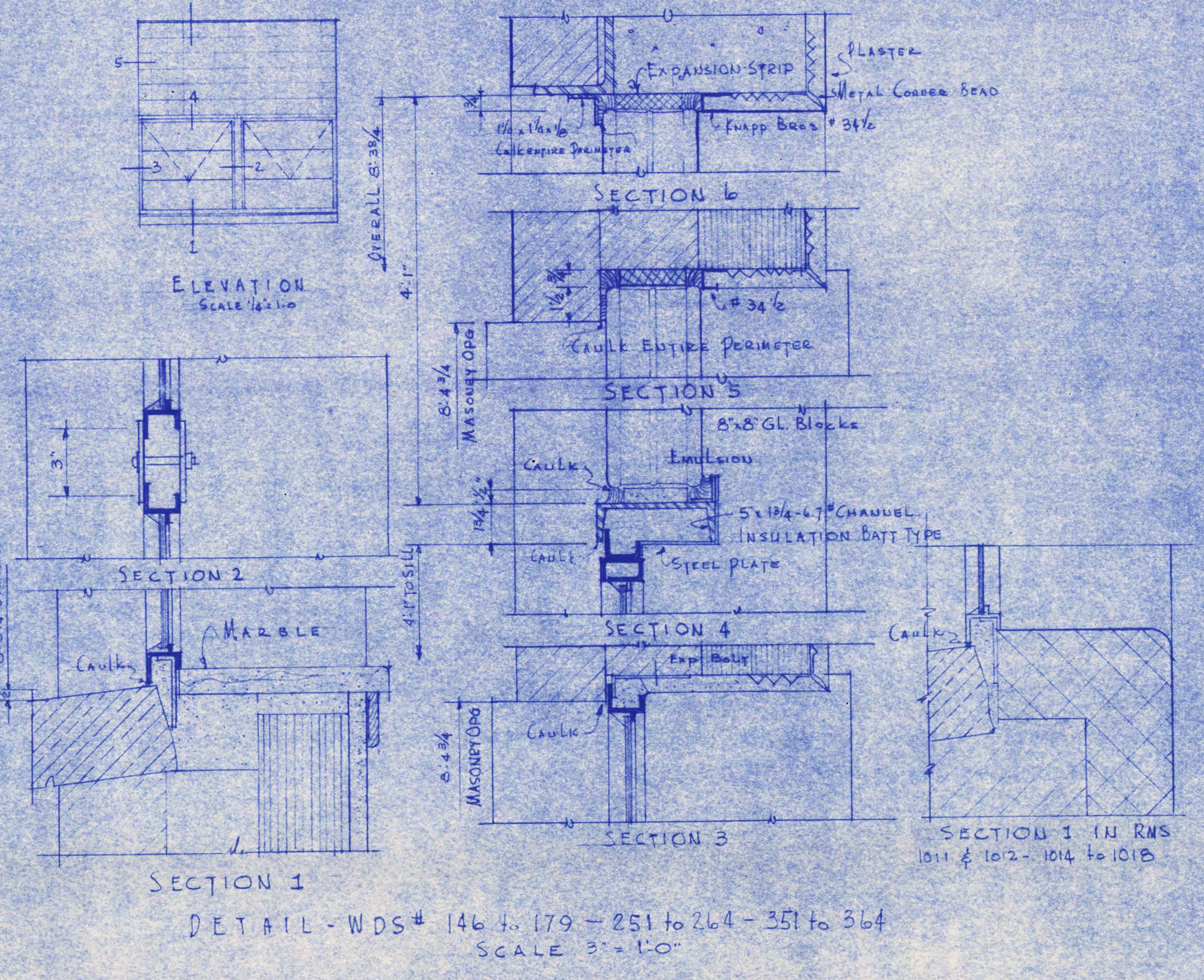
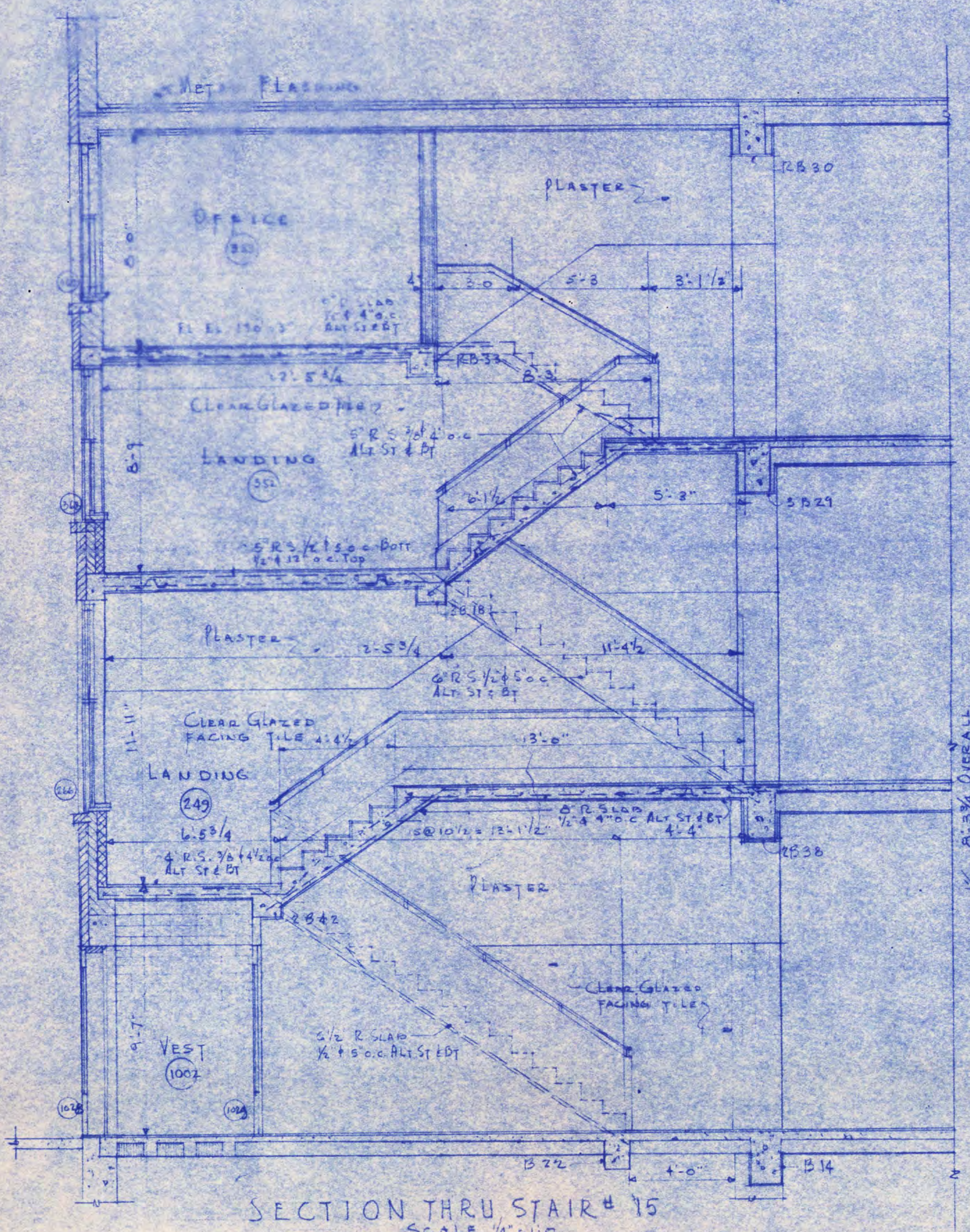
SHEET NO. 23
 CONTRACT NO. 339



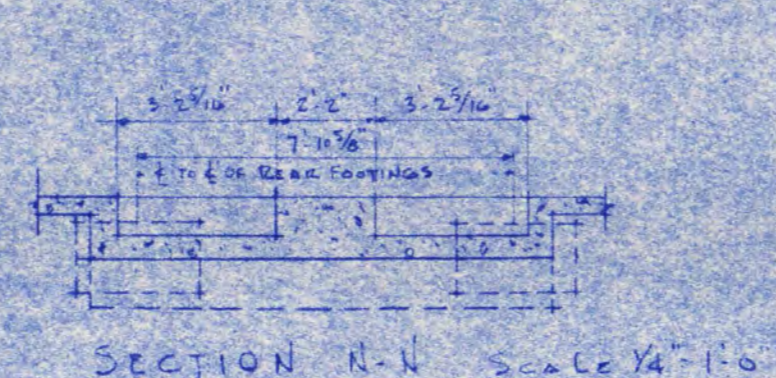
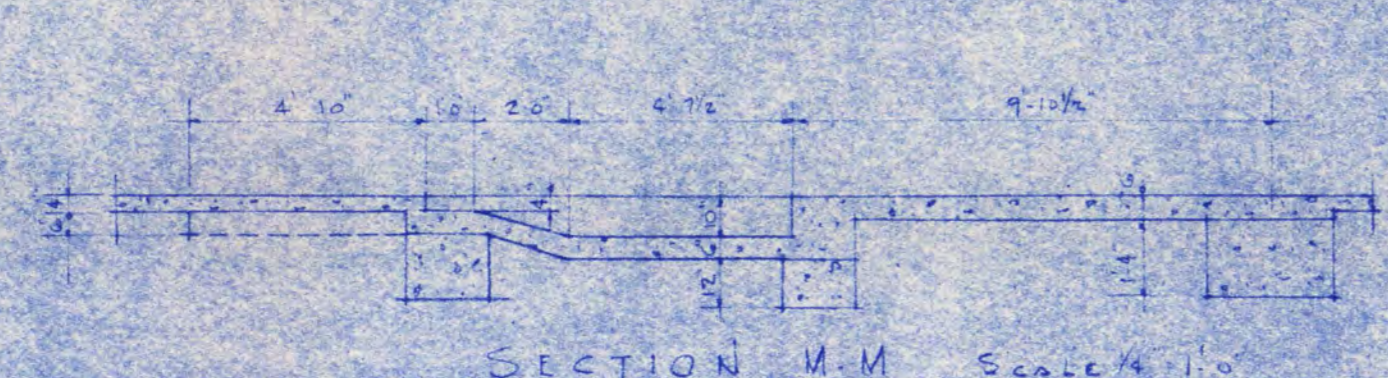
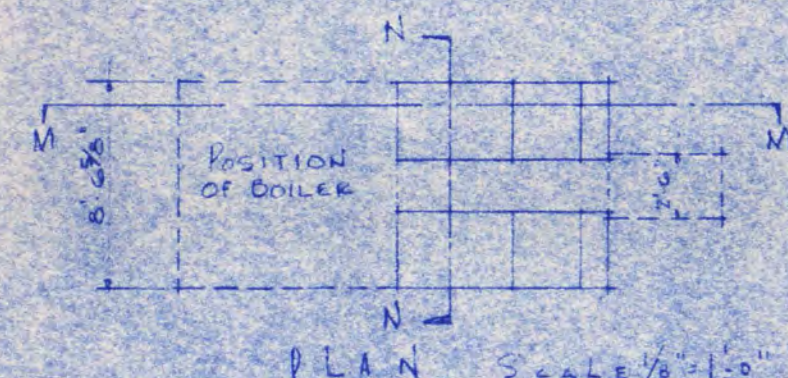
SOUTH ELEVATION SCALE 1/8" = 1'-0"

EAST ELEVATION OF SHOP

WEST ELEVATION OF SHOP SCALE 1/8" = 1'-0"

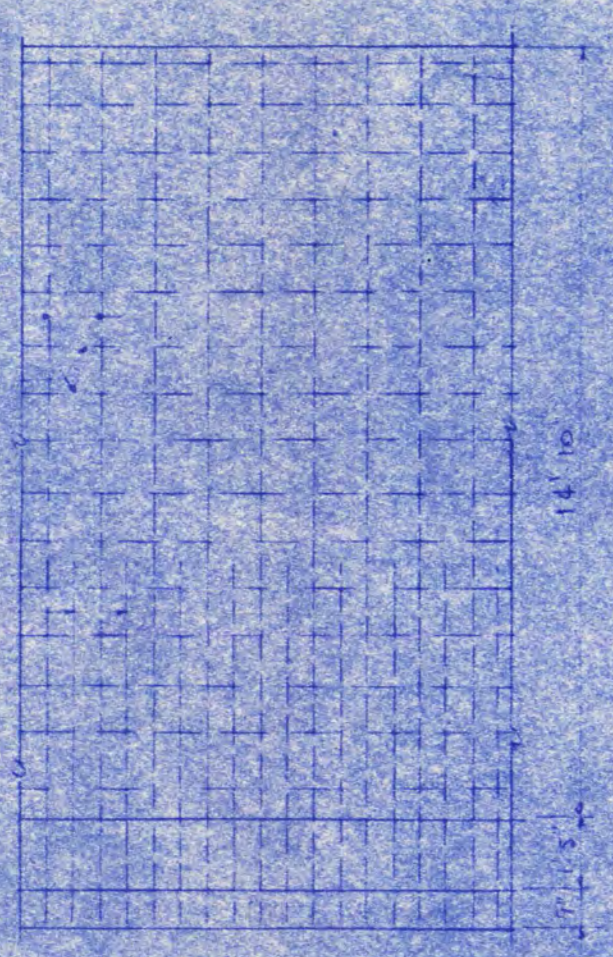
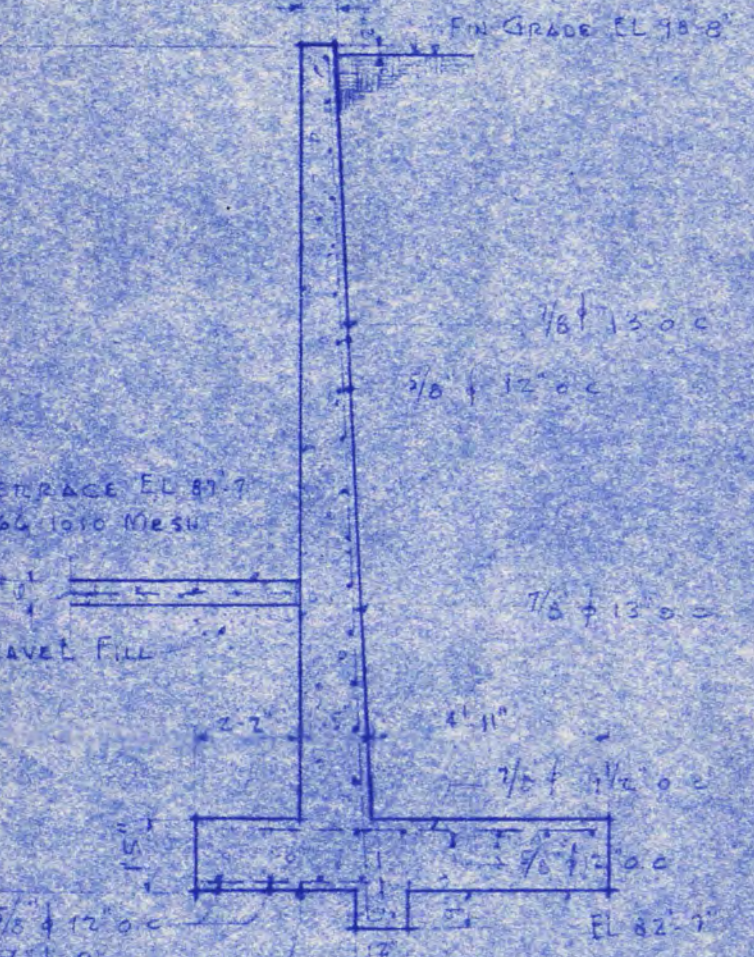


MAIN BUILDING & AUDITORIUM FOR STATE TEACHERS COLLEGE DEPT. OF ADMINISTRATION - STATE OF MINNESOTA SAINT PAUL, MINN.		
DATE	L.C. PINAULT & FRANK W. JACKSON, ASSOC. ARCHTS., SAINT CLOUD, MINN.	SHEET NO.
REVISED	APPROVED BY	NO.
	APPROVED BY	25
	APPROVED BY	359

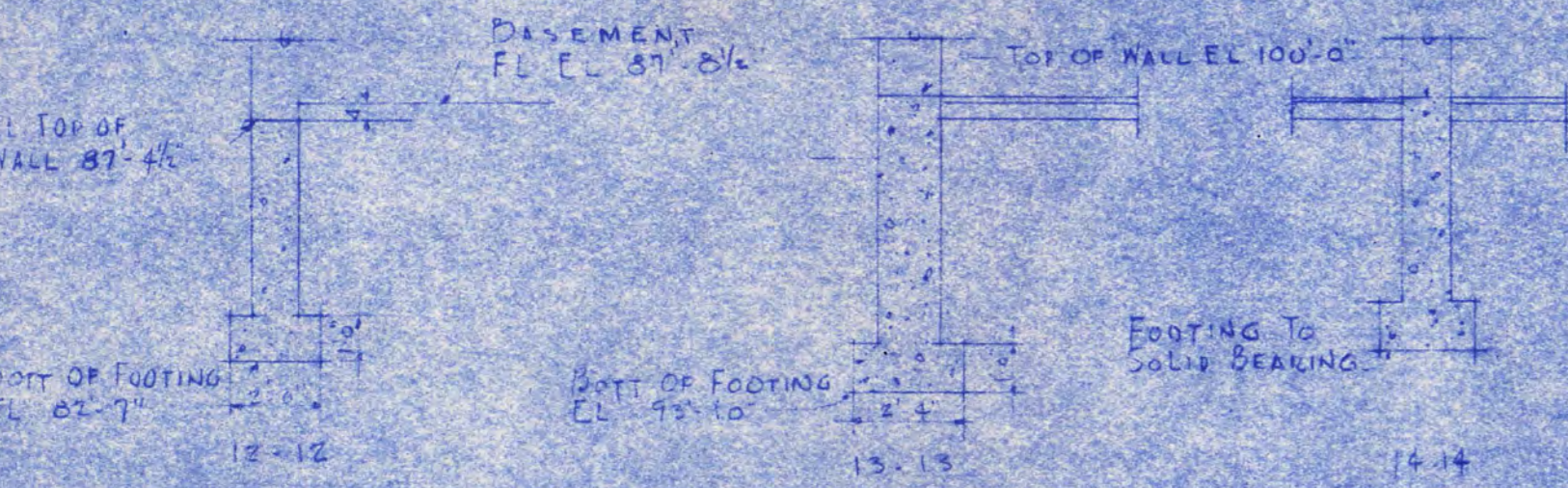


DETAILS OF BOILER FOOTING

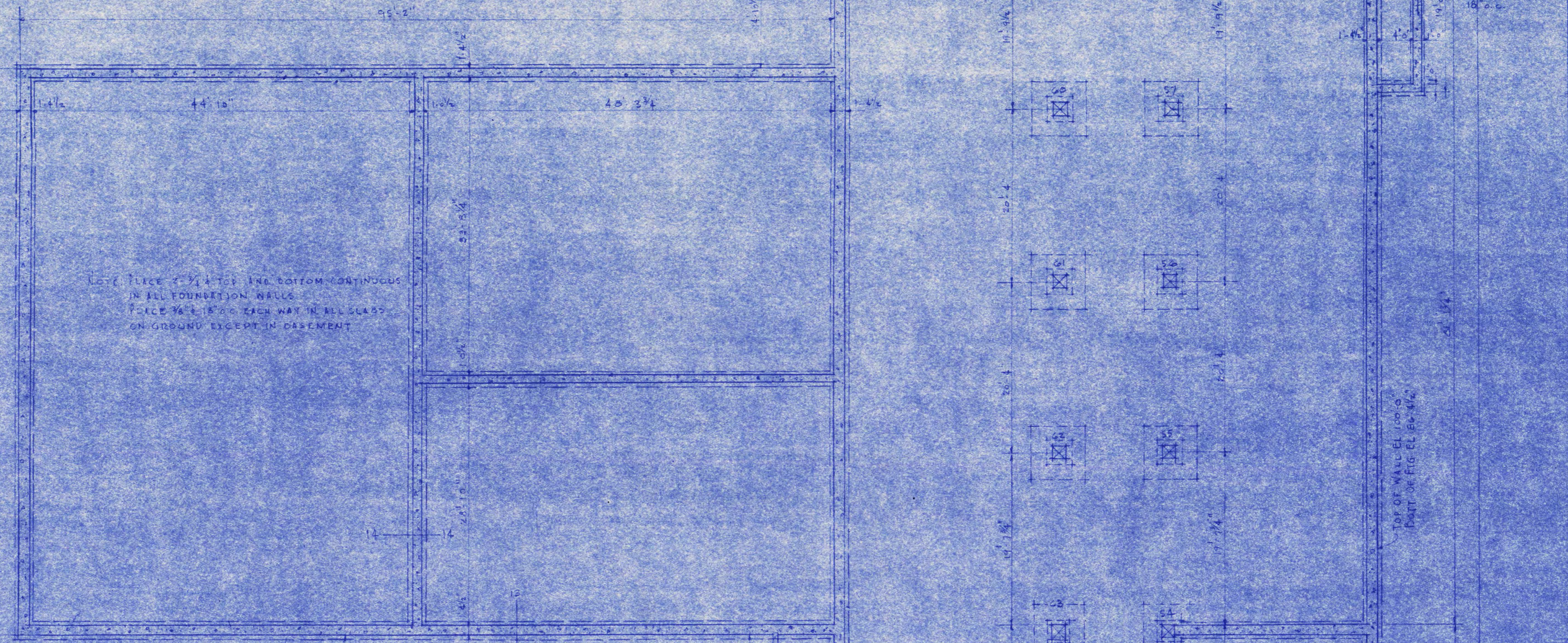
WORK TO BE DONE UNDER DIRECTION OF HEATING CONTRACTOR
SEE MECHANICAL DEPT. FOR LOCATION



RETAINING WALL DETAILS



FOOTING SECTIONS



NOTE: PLACE 2 #4 TOP AND BOTTOM CONTINUOUS IN ALL FOUNDATION WALLS
FORCE 3/8" x 18" @ 6" EACH WAY IN ALL SLABS ON GROUND EXCEPT IN PAVEMENT

COLUMN SCHEDULE										
COLUMN NO.	49	50	51	52	53	54	55	56	57	58
ROOF	12 x 12 4-#6	12 x 12 4-#6	12 x 12 4-#6	12 x 12 4-#6	12 x 12 4-#6	12 x 12 4-#6	12 x 12 4-#6	12 x 12 4-#6	12 x 12 4-#6	12 x 12 4-#6
3RD FLOOR	14 x 14 6-#6	14 x 14 6-#6	14 x 14 6-#6	14 x 14 6-#6	14 x 14 6-#6	14 x 14 6-#6	14 x 14 6-#6	14 x 14 6-#6	14 x 14 6-#6	14 x 14 6-#6
2ND FLOOR	14 x 14 6-#6	14 x 14 6-#6	14 x 14 6-#6	14 x 14 6-#6	14 x 14 6-#6	14 x 14 6-#6	14 x 14 6-#6	14 x 14 6-#6	14 x 14 6-#6	14 x 14 6-#6
1ST FLOOR	16 x 16 8-#6	16 x 16 8-#6	16 x 16 8-#6	16 x 16 8-#6	16 x 16 8-#6	16 x 16 8-#6	16 x 16 8-#6	16 x 16 8-#6	16 x 16 8-#6	16 x 16 8-#6
BASEMENT	16 x 16 8-#6	16 x 16 8-#6	16 x 16 8-#6	16 x 16 8-#6	16 x 16 8-#6	16 x 16 8-#6	16 x 16 8-#6	16 x 16 8-#6	16 x 16 8-#6	16 x 16 8-#6
CAP	24 x 24 12-#6	24 x 24 12-#6	24 x 24 12-#6	24 x 24 12-#6	24 x 24 12-#6	24 x 24 12-#6	24 x 24 12-#6	24 x 24 12-#6	24 x 24 12-#6	24 x 24 12-#6
BASE	24 x 24 12-#6	24 x 24 12-#6	24 x 24 12-#6	24 x 24 12-#6	24 x 24 12-#6	24 x 24 12-#6	24 x 24 12-#6	24 x 24 12-#6	24 x 24 12-#6	24 x 24 12-#6
BEING	24 x 24 12-#6	24 x 24 12-#6	24 x 24 12-#6	24 x 24 12-#6	24 x 24 12-#6	24 x 24 12-#6	24 x 24 12-#6	24 x 24 12-#6	24 x 24 12-#6	24 x 24 12-#6
DOWELS	7-#6	8-#6	8-#6	8-#6	8-#6	8-#6	8-#6	8-#6	8-#6	8-#6

FOOTING & FOUNDATION PLAN

Scale 1/4" = 1'-0"

MAIN BUILDING & AUDITORIUM
FOR
STATE TEACHERS COLLEGE
SAINT CLOUD, MINN.
DEPT. OF ADMINISTRATION - STATE OF MINNESOTA
SAINT PAUL, MINN.

DATE FEB 1947
DESIGNED BY L.C. PINAULT & FRANK W. JACKSON, ASSOC. ARCHTS., SAINT CLOUD, MINN.
ELMER & CO., CONSULTING ARCHITECTS, SAINT PAUL, MINN.
APPROVED BY PRES. OF ST. CLOUD TEACHERS COLLEGE
APPROVED BY PRES. OF STATE TEACHERS COLLEGE BOARD
DRAWN BY
APPROVED BY COMMISSIONER OF ADMINISTRATION AN AUTHORIZED SIGNATURE

SHEET NO. 3 OF 25
CONTRACT NO. 339