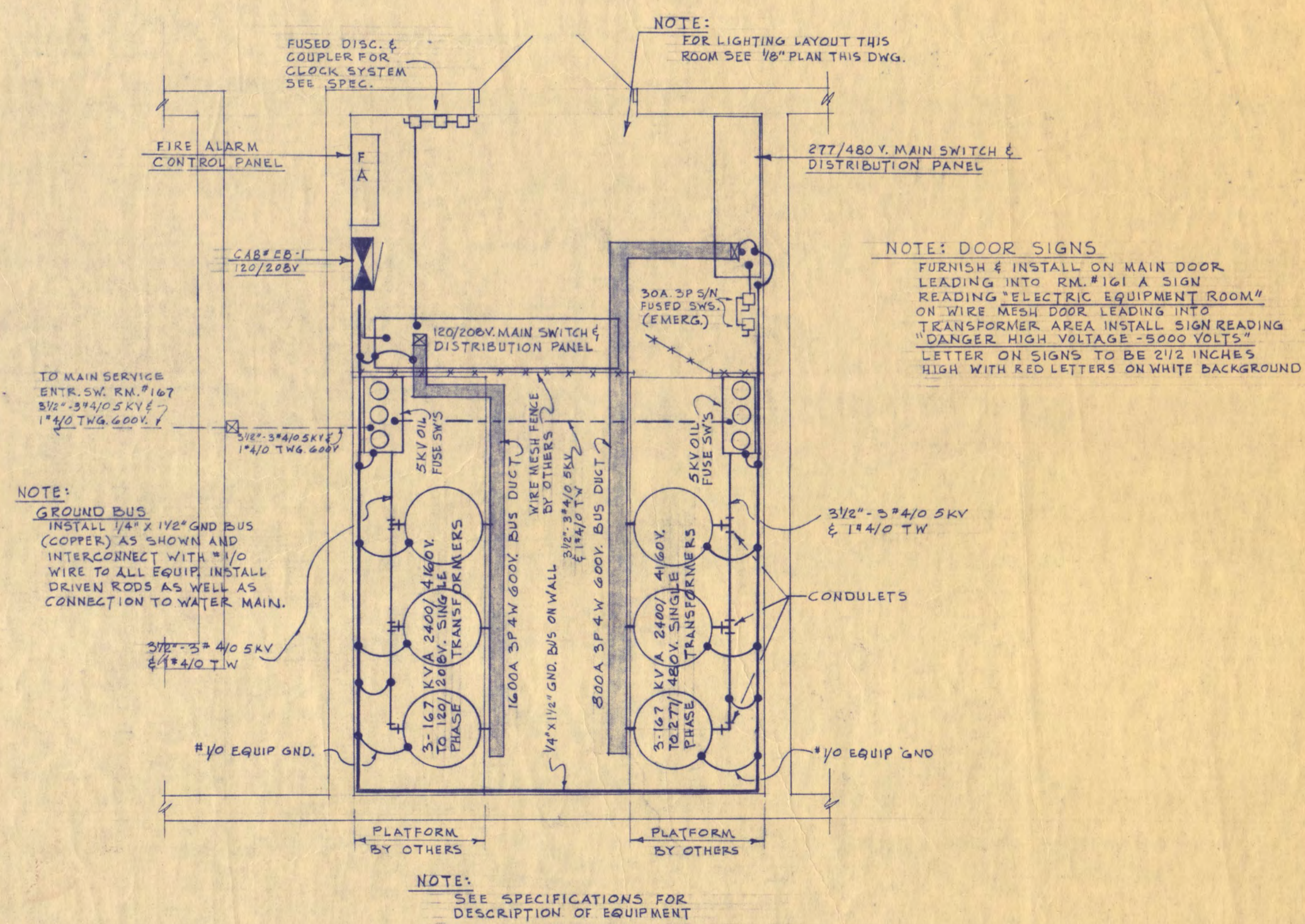


BASEMENT PLAN-LIGHT, POWER & COMMUNICATIONS
SCALE 1/8"=1'-0"



ELECTRIC EQUIPMENT ROOM NO. 161
SCALE 1/4"=1'-0"



WALTER BUTLER COMPANY
HAARSTICK LUNDGREN AND ASSOCIATES INC
ARCHITECTS ST. PAUL ENGINEERS MINN.

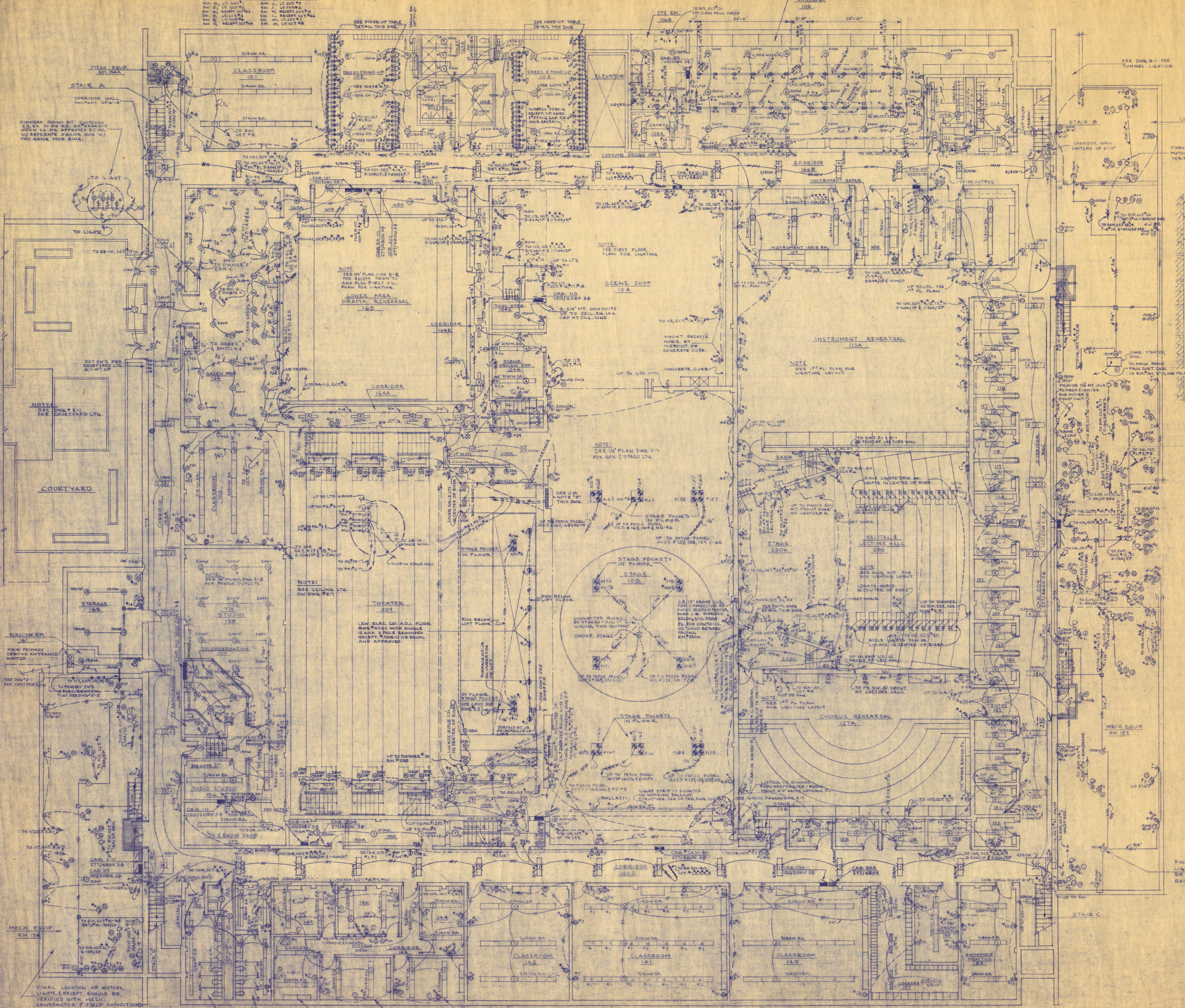
FINE ARTS BUILDING

ST. CLOUD STATE COLLEGE
ST. CLOUD, MINNESOTA

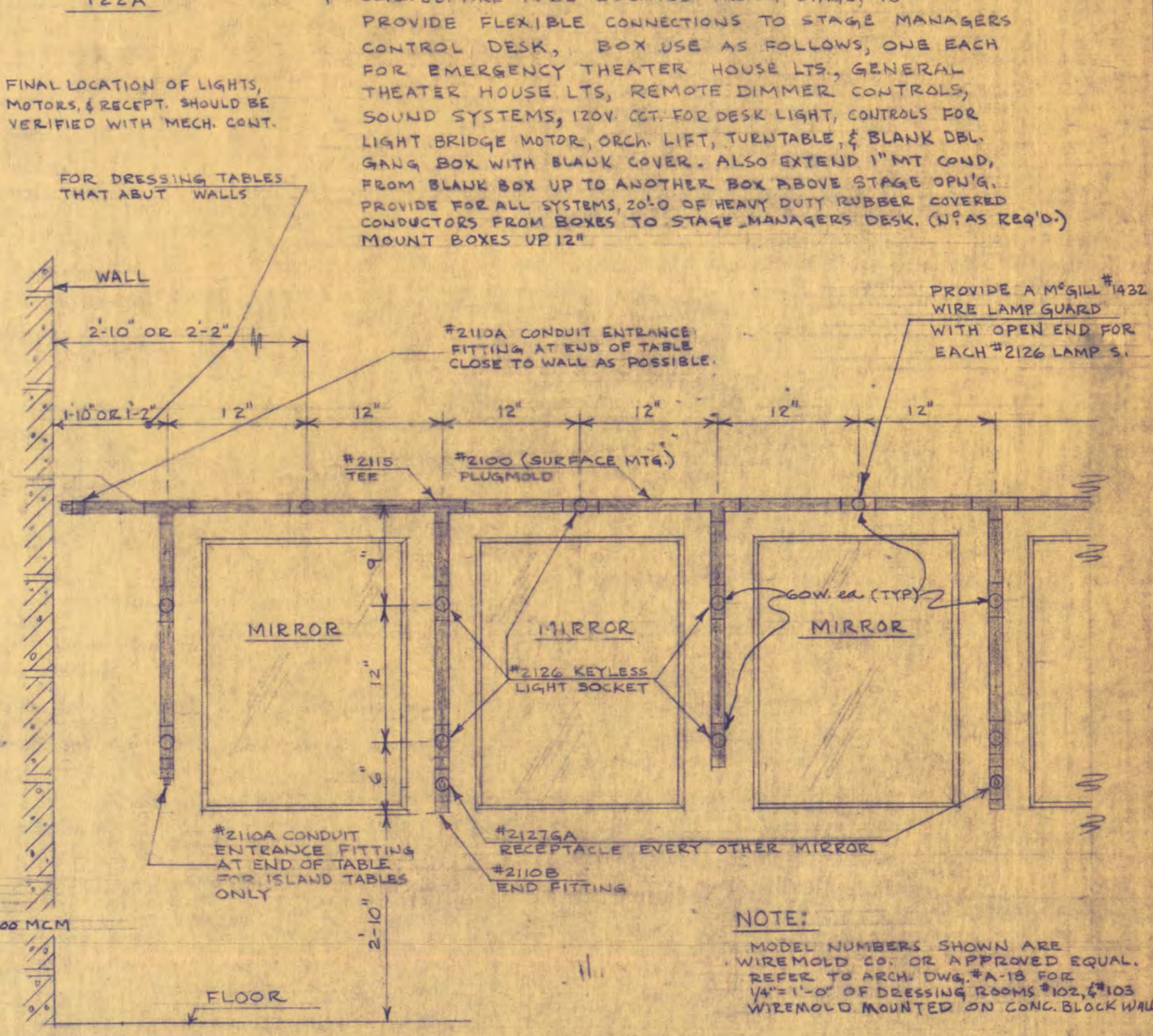
DEPARTMENT OF ADMINISTRATION - STATE OF MINNESOTA
A. J. NELSON STATE ARCHITECT

STATE PROJECT NO. 3750	APPROVED BY: _____ PRESIDENT, ST. CLOUD STATE COLLEGE
COMM. NO. 6401	APPROVED BY: _____ EXECUTIVE DIRECTOR, STATE COLLEGE BOARD
DATE JUNE 15, 1965	APPROVED BY: _____ COMMISSIONER OF ADMINISTRATION AN AUTHORIZED SIGNATURE
DRAWN BY J.P.F.W.K.	I HEREBY CERTIFY THAT THIS DRAWING WAS PREPARED BY ME OR UNDER MY DIRECT SUPERVISION (AND THAT I AM A REGISTERED ENGINEER UNDER THE LAWS OF THE STATE OF MINNESOTA)
CHECKED BY T.C.H.D.W.M.	REG. NO. _____
SHEET NO. E-2	FEDERAL GRANT NO. MINN. 4-1884
REV. DATE 5-16-66	ELECTRICAL BASEMENT PLAN, LIGHT, POWER COMMUNICATIONS & DETAILS

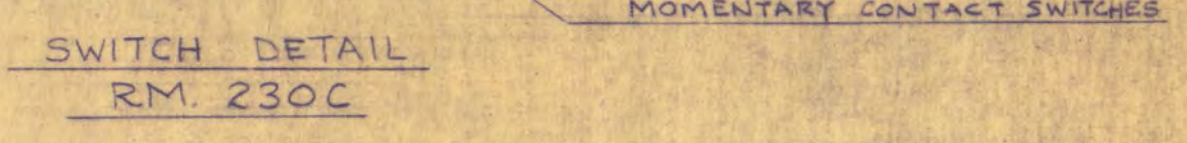
MAKE-UP TABLE LIGHT & RECEPT SWITCHING
ROOMS 102 & 103



- NOTES**
- A'-LIGHTS TO BE SURFACE MOUNTED ON & BETWEEN CONCRETE JOISTS.
 - B'-FURNISH & INSTALL 4'-20" SECTIONS OF UNISTRUT #15500-60 CHANNELS, ANCHOR TO UNDERSIDE OF CONCRETE JOISTS WITH 1/2" DIA. X 6" LONG BOLTS. PROVIDE UNISTRUT #1-K100 DUPLEX GROUNDED OUTLETS 4'-0" O.C. SNAP-IN FILLER STUD AS REQ'D AND "P" SECT-75 END CONNECTORS AT THE END OF EACH CHANNEL.
 - C'-SEE 1/4" PLAN DWG. E-4 FOR POWER REQUIREMENTS OF ROOMS 102 & 103 WITH 1/2" PIP.
 - D'-LIGHT DIMMER SWITCHES TO BE GENERAL ELECTRIC CO. #853342, 400W. EX. OR APPROVED EQUAL.
 - E'-RELAYS #1, #2 ARE ENCLOSED IN CABINET. SEE NOTE ON RELAYS DWG. E-6.
 - F'-SEVEN UNITS ARE TO BE LOCATED PACHA STAGE. TO PROVIDE FLEXIBLE CONNECTIONS TO STAGE MANAGERS CONTROL DESK. BOX USE AS FOLLOWS, ONE EACH FOR EMERGENCY THEATER HOUSE LITS, GENERAL THEATER HOUSE LITS, REMOTE DIMMER CONTROLS, SOUND SYSTEMS, 120V. CTT. FOR DESK LIGHT, CONTRAS FOR LIGHT BRIDGE MOTOR, OCAU. LIFT, THEATRE TABLE & BLANK DR. GALL. BOX WITH BLANK COVER. ALSO EXTEND 1" MT. COND. FROM BLANK BOX UP TO ANOTHER BOX ABOVE STAGE OR IN PROVIDE THE ALL SYSTEMS TO BE HEAVY DUTY RUBBER COVERED CONNECTORS FROM BOXES TO STAGE MANAGERS DESK. (UTAS REQ'D) MOUNT BOXES UP 12".



TYPICAL DETAIL OF DRESSING RM., MAKE-UP TABLE LIGHTING
ROOMS NO 102 & 103
SCALE: 1/4" = 1'-0"



SWITCH DETAIL RM. 230C

FINAL LOCATION OF MOTORS, LIGHTS & RECEPT SHOULD BE VERIFIED WITH MECH. CONTR. & FIELD CONDITIONS

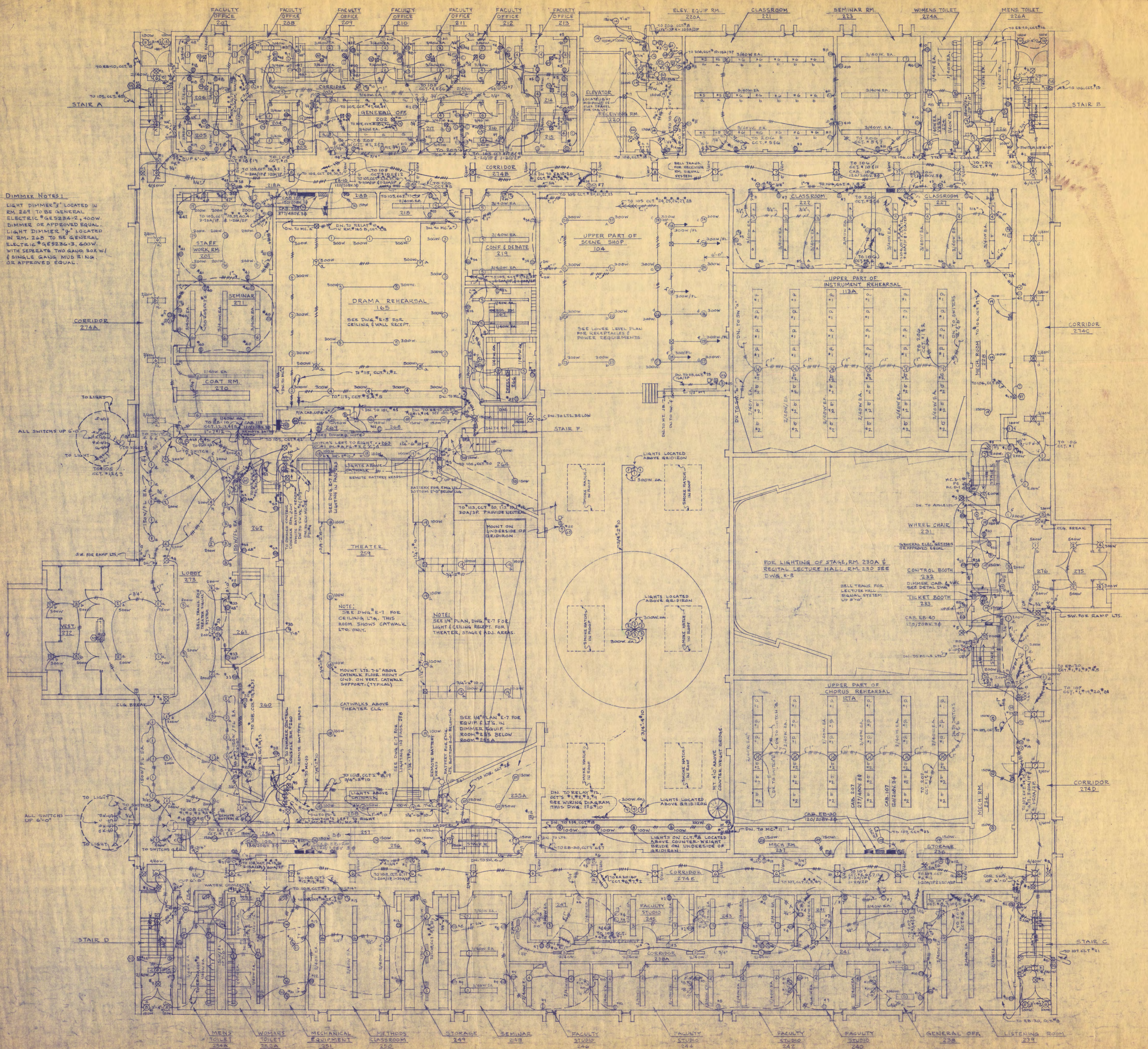
WALTER BUTLER COMPANY
HAARSTICK LUNDGREN AND ASSOCIATES INC.
ARCHITECTS ST. PAUL, MINN.
ENGINEERS ST. PAUL, MINN.

FINE ARTS BUILDING

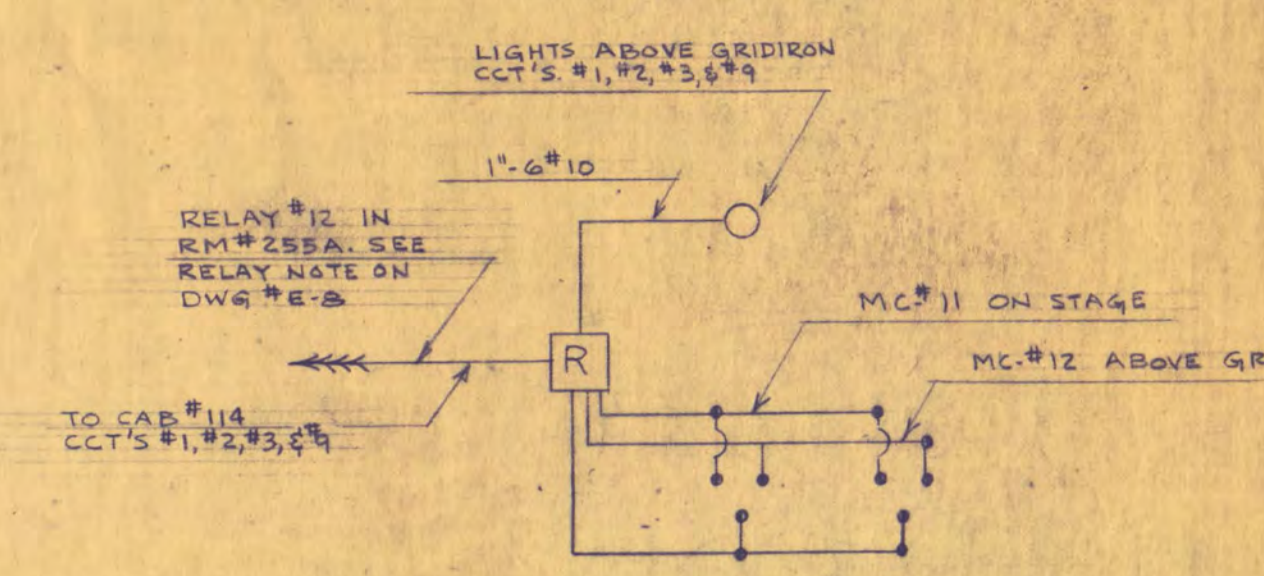
ST. CLOUD STATE COLLEGE
ST. CLOUD, MINNESOTA
DEPARTMENT OF ADMINISTRATION - STATE OF MINNESOTA
A. J. NELSON ST. PAUL, MINNESOTA STATE ARCHITECT

STATE PROJECT NO. 3750
COMA NO. 6401
DATE LUNES, 1955
DRAWN BY JFJ JK
CHECKED BY REHDFH
I HEREBY CERTIFY THAT THIS DRAWING WAS PREPARED BY ME OR UNDER MY DIRECT SUPERVISION AND THAT I AM A REGISTERED ENGINEER UNDER THE LAWS OF THE STATE OF MINN.

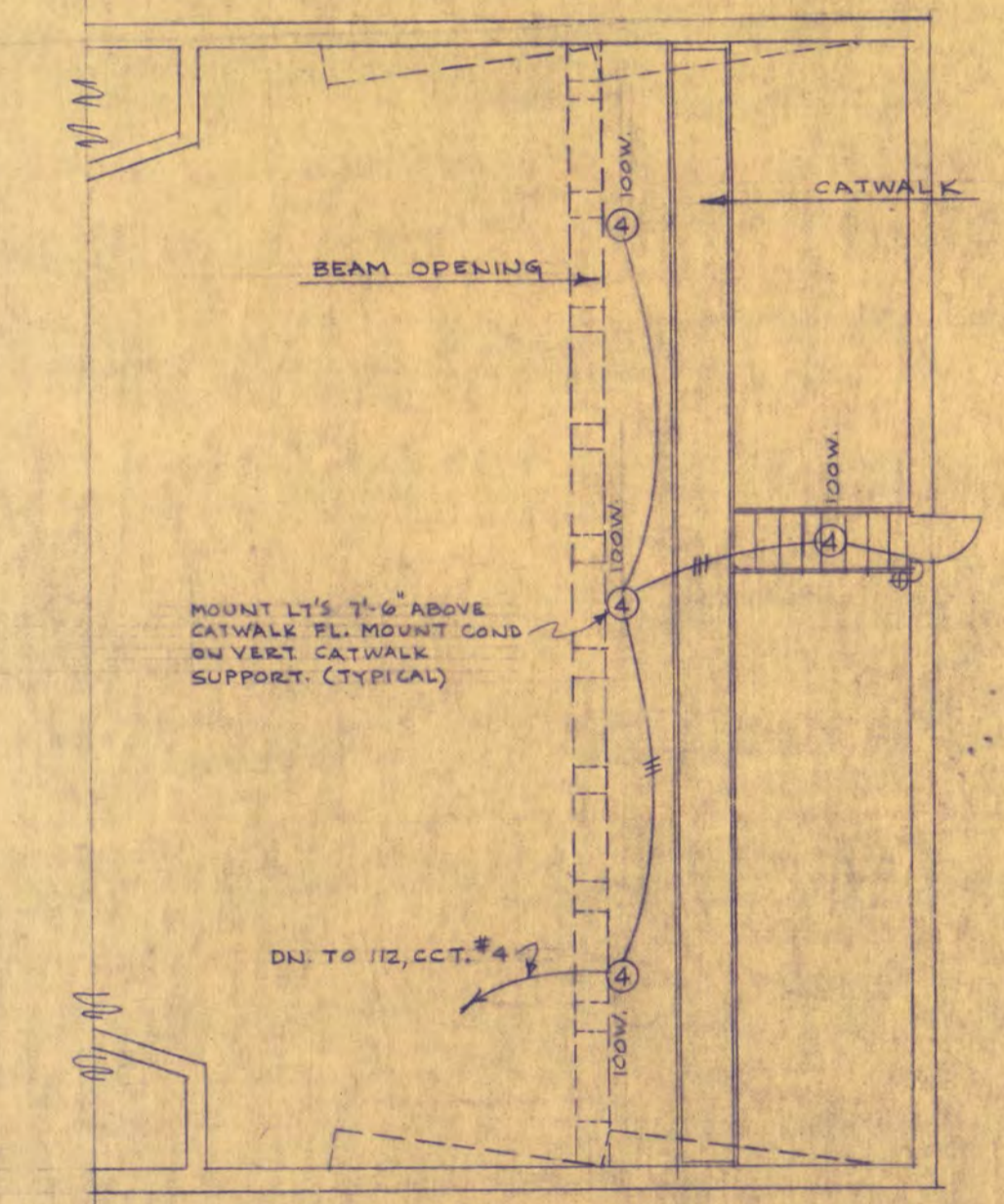
APPROVED BY PRESIDENT, ST. CLOUD STATE COLLEGE
APPROVED BY EXECUTIVE DIRECTOR, STATE COLLEGE BOARD
APPROVED BY COMMISSIONER OF ADMINISTRATION (AN AUTHORIZED SIGNATURE)
REG. NO.
ELECTRICAL
GROUND FLOOR
LIGHT & POWER
FEDERAL GRANT NO. MINN. 4-1684
REV. DATE 5-16-56



DIMMER NOTES:
 LIGHT DIMMERS LOCATED IN RM 269 TO BE GENERAL ELECTRIC P4E23A-2, 400W. DIMMER OR APPROVED EQUAL. LIGHT DIMMER 'B' LOCATED IN RM. 268 TO BE GENERAL ELECTRIC P4E23B-3, 600W. WITH SEPARATE TWO GANG BOX W/ SINGLE GANG NUD RING OR APPROVED EQUAL.



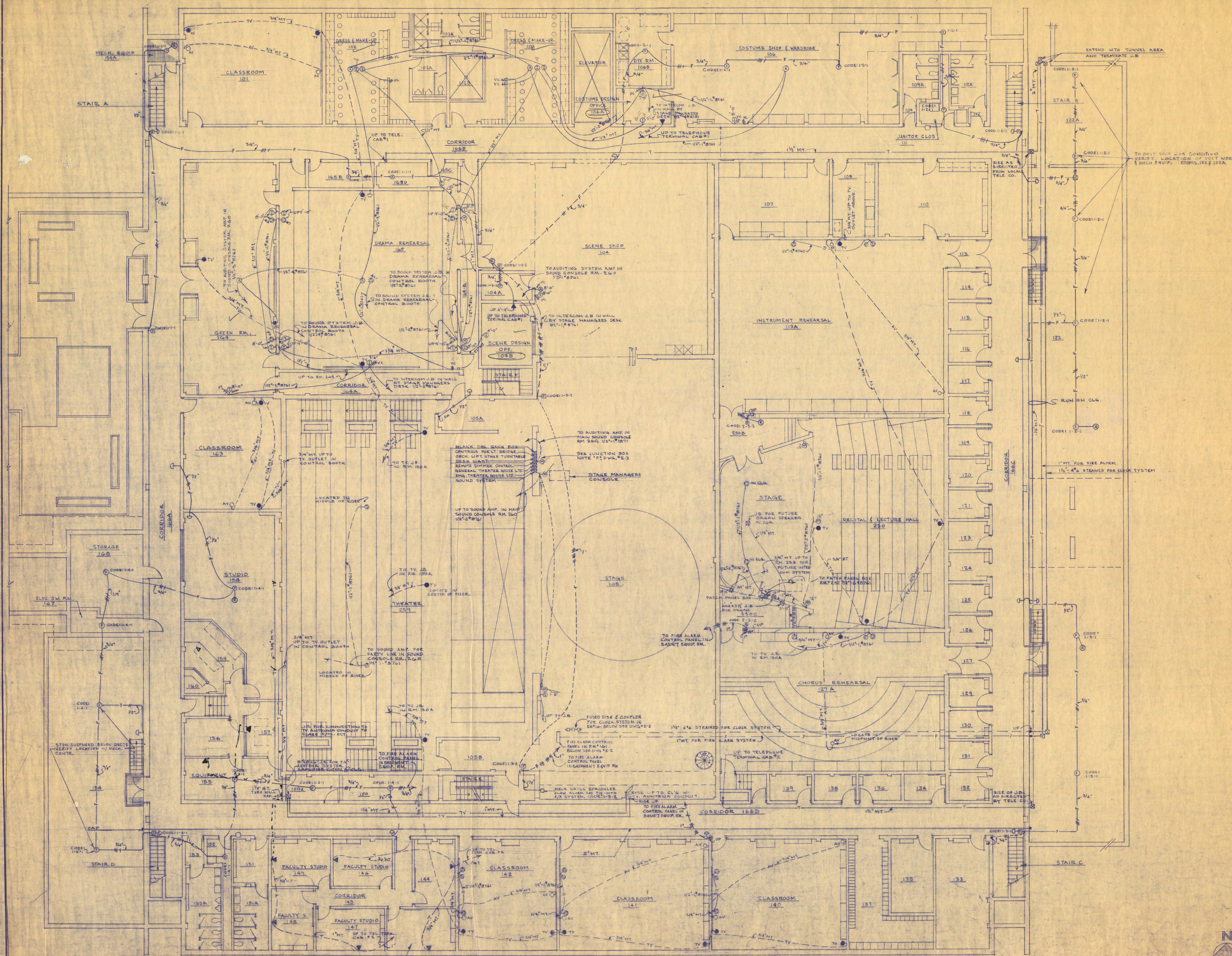
SCHEMATIC WIRING DIAGRAM ON LIGHTS ABOVE STAGE GRIDIRON
 NO SCALE



PARTIAL PLAN OF AREA ABOVE SUSPENDED CEILING IN RECITAL LECTURE HALL #230 SHOWING CATWALK LIGHTING.
 1/8" = 1'-0"

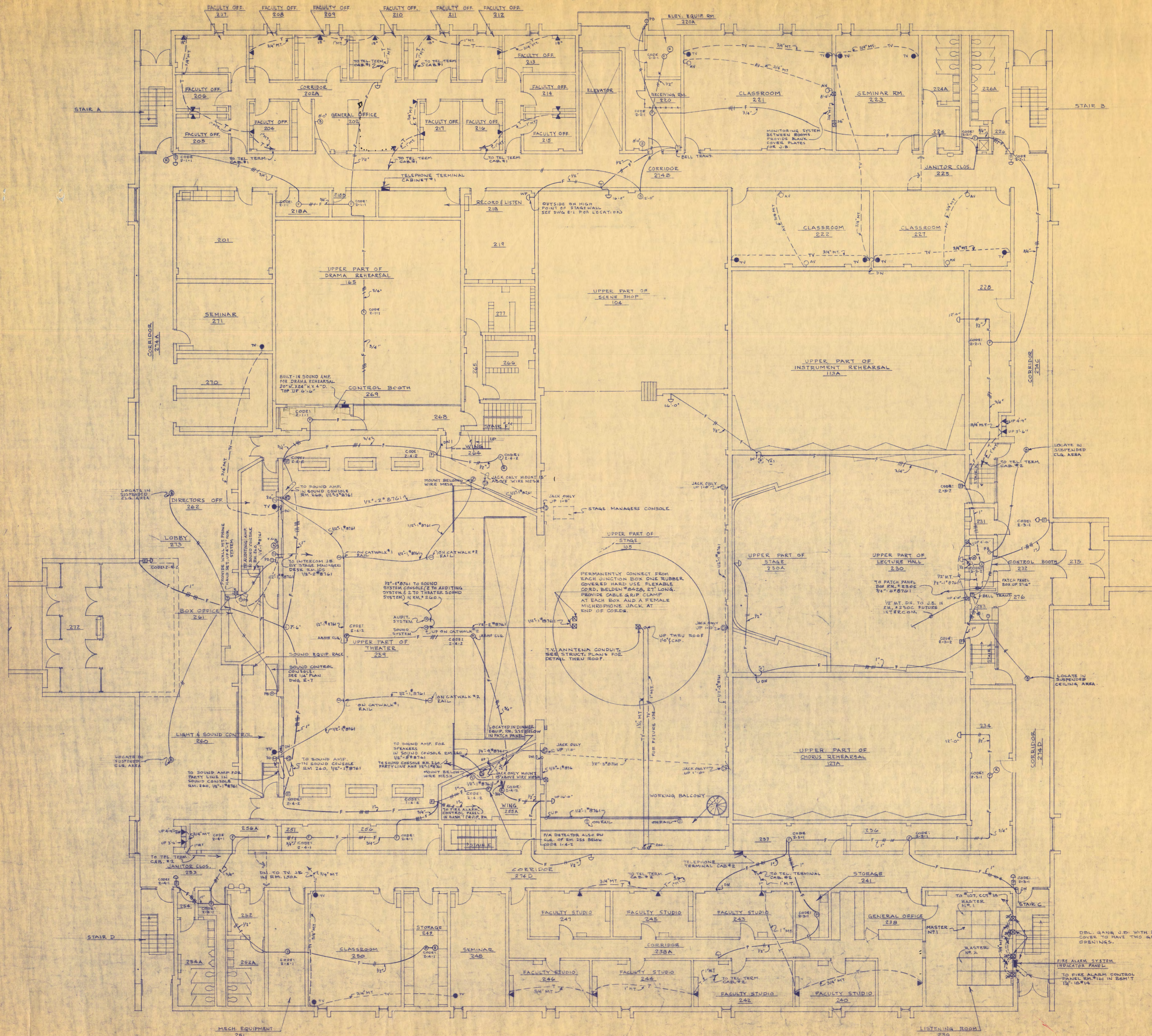
WALTER BUTLER COMPANY	
HAARSTICK LUNDGREN AND ASSOCIATES INC	
ARCHITECTS	ENGINEERS
ST. PAUL	MINN.
FINE ARTS BUILDING	
ST. CLOUD STATE COLLEGE	
ST. CLOUD, MINNESOTA	
DEPARTMENT OF ADMINISTRATION - STATE OF MINNESOTA	
A. J. NELSON STATE ARCHITECT	
STATE PROJECT NO.	APPROVED BY _____ PRESIDENT, ST. CLOUD STATE COLLEGE
3750	APPROVED BY _____ EXECUTIVE DIRECTOR, STATE COLLEGE BOARD
COMM. NO.	APPROVED BY _____ COMMISSIONER OF ADMINISTRATION
6401	AN AUTHORIZED SIGNATURE
DATE	I HEREBY CERTIFY THAT THIS DRAWING WAS PREPARED BY ME OR UNDER MY DIRECT SUPERVISION AND THAT I AM A REGISTERED ENGINEER UNDER THE LAWS OF THE STATE OF _____
DRAWN BY	_____ REG. NO. _____
CHECKED BY	_____
WALTER BUTLER COMPANY	_____
ST. PAUL, MINN.	_____
FEDERAL GRANT NO. 4-1884	_____
REV. DATE 5-16-46	_____
OR DESIG	_____

NOTE
 ALL SOUND SYSTEMS TO HAVE BELDEN WIRE,
 TRADE NUMBER AND AMOUNT AS
 NOTED ON PLAN.



WALTER BUTLER COMPANY	
HAARSTICK LUNDGREN AND ASSOCIATES INC.	
ARCHITECTS	ENGINEERS
ST. PAUL	MINN.
FINE ARTS BUILDING	
ST. CLOUD STATE COLLEGE	
DEPARTMENT OF ADMINISTRATION - STATE OF MINNESOTA	
A. J. NELSON	STATE ARCHITECT
STATE PROJECT NO. 3750	APPROVED BY _____ PRESIDENT, ST. CLOUD STATE COLLEGE
COMM. NO. 6401	APPROVED BY _____ EXECUTIVE DIRECTOR, STATE COLLEGE BOARD
DATE JUNE 15, 1948	APPROVED BY _____ COMMISSIONER OF ADMINISTRATION
DRAWN BY J.P. & J.K.	I HEREBY CERTIFY THAT THIS DRAWING WAS PREPARED BY ME OR UNDER MY DIRECT SUPERVISION AND THAT I AM A REGISTERED ARCHITECT UNDER THE LAWS OF THE STATE OF MINNESOTA.
CHECKED BY R.E. POWELL	REG. NO. _____
SHEET NO. E-5	FEDERAL GRANT NO. MINN. 4-1884
REV. DATE 5-16-50	OF SHEETS _____
ELECTRICAL	
GROUND FLOOR COMMUNICATIONS	



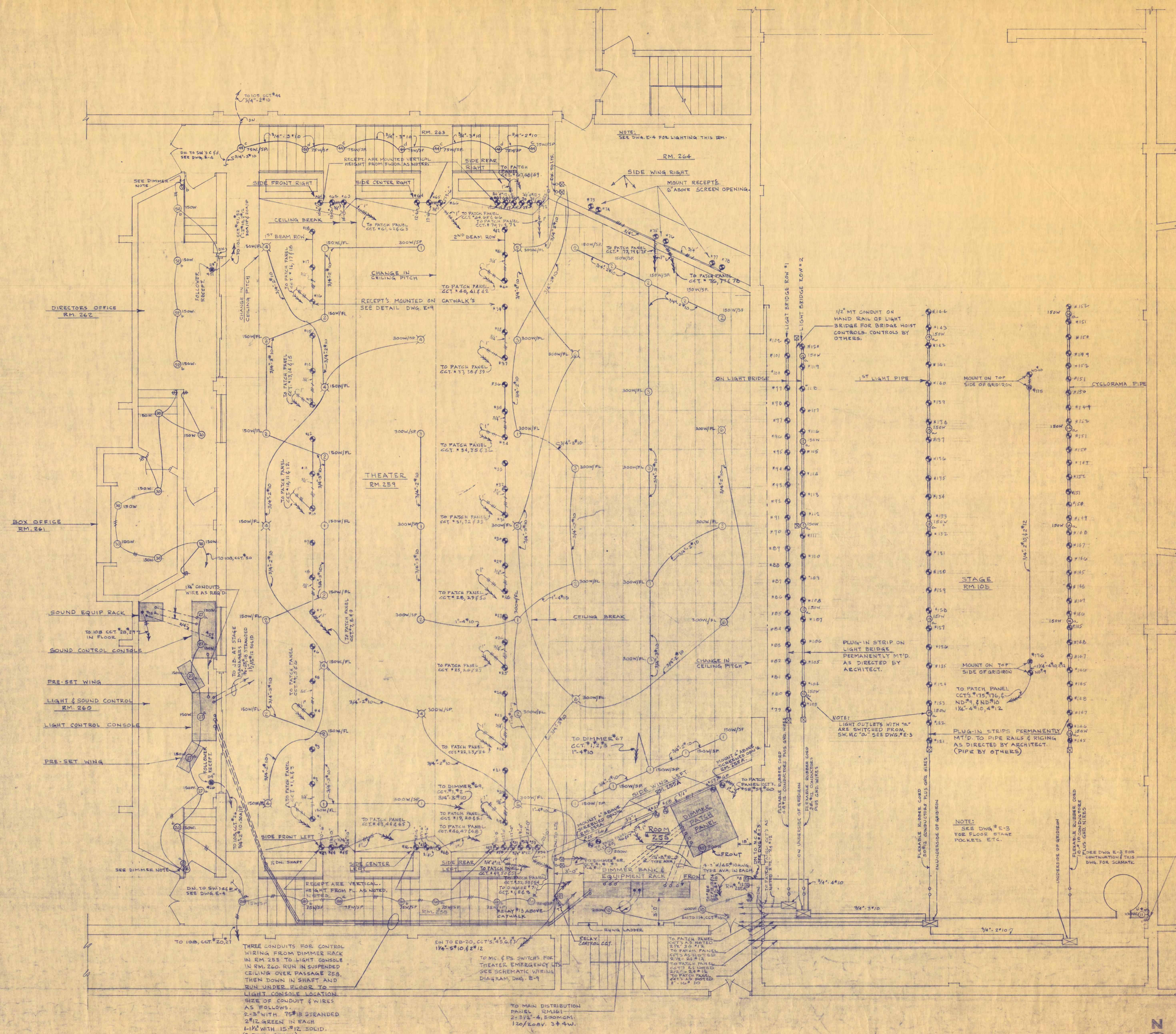


WALTER BUTLER COMPANY	
HAARSTICK LUNDGREN AND ASSOCIATES INC	
ARCHITECTS ST. PAUL	ENGINEERS MINN.
FINE ARTS BUILDING	
ST. CLOUD STATE COLLEGE ST. CLOUD, MINNESOTA	
DEPARTMENT OF ADMINISTRATION - STATE OF MINNESOTA A. J. NELSON STATE ARCHITECT	
STATE PROJECT NO. 3750	APPROVED BY: PRESIDENT, ST. CLOUD STATE COLLEGE
COMM. NO. 6401	APPROVED BY: EXECUTIVE DIRECTOR, STATE COLLEGE BOARD
DATE JUNE 15, 1965	APPROVED BY: COMMISSIONER OF ADMINISTRATION AND AUTHORIZED SIGNATORY
DRAWN BY J.P. J.K.	I HEREBY CERTIFY THAT THIS DRAWING WAS PREPARED BY ME OR UNDER MY DIRECT SUPERVISION AND THAT I AM A REGISTERED ENGINEER UNDER THE LAWS OF THE STATE OF MINN.
CHECKED BY R.E.H.P.O.H.L.	REG. NO.
SHEET NO. E-6	FEDERAL GRANT NO. MINN. 4-1084
REV. DATE 5-16-72	REV. DATE
OF SHEETS	OF SHEETS



ELECTRICAL
FIRST FLOOR
COMMUNICATIONS

WALL DIMMER NOTE
 DIMMERS IN LIGHT SOUND RM.
 DIRECTORS OFFICE SHALL BE
 GE. CO. #GES410-3, 100W EA. OR
 APPROVED EQUAL W/ SEPARATE
 3 GANG BOX W/ TWO GANG MUD
 RING.



DIRECTORS OFFICE
 RM. 262

BOX OFFICE
 RM. 261

SOUND EQUIP RACK

SOUND CONTROL CONSOLE

PRE-SET WING

LIGHT & SOUND CONTROL
 RM. 260

LIGHT CONTROL CONSOLE

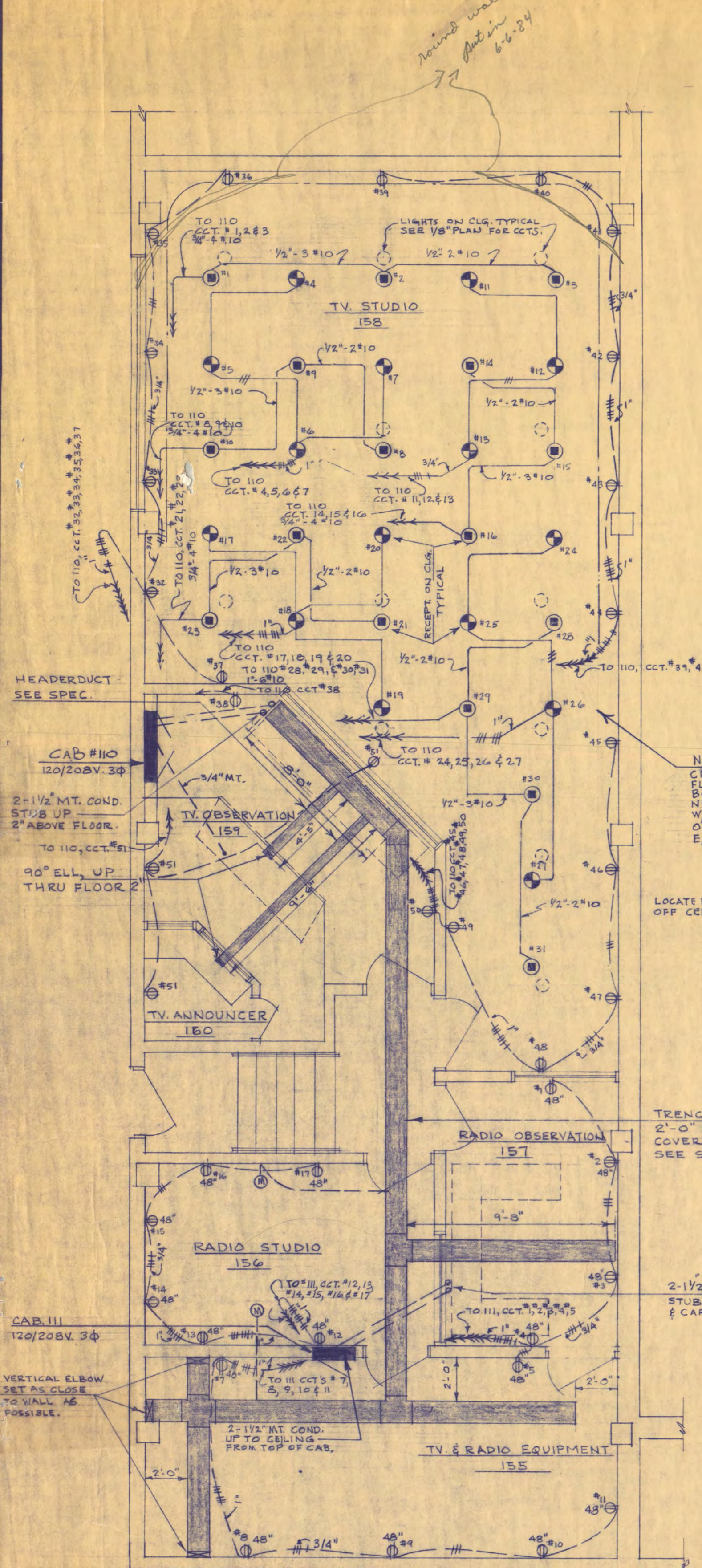
PRE-SET WING

MAIN THEATER & STAGE LIGHTING & POWER
 ROOMS - 105, 259, 260, 261, 262, 255, 264

SCALE 1/4" = 1'-0"

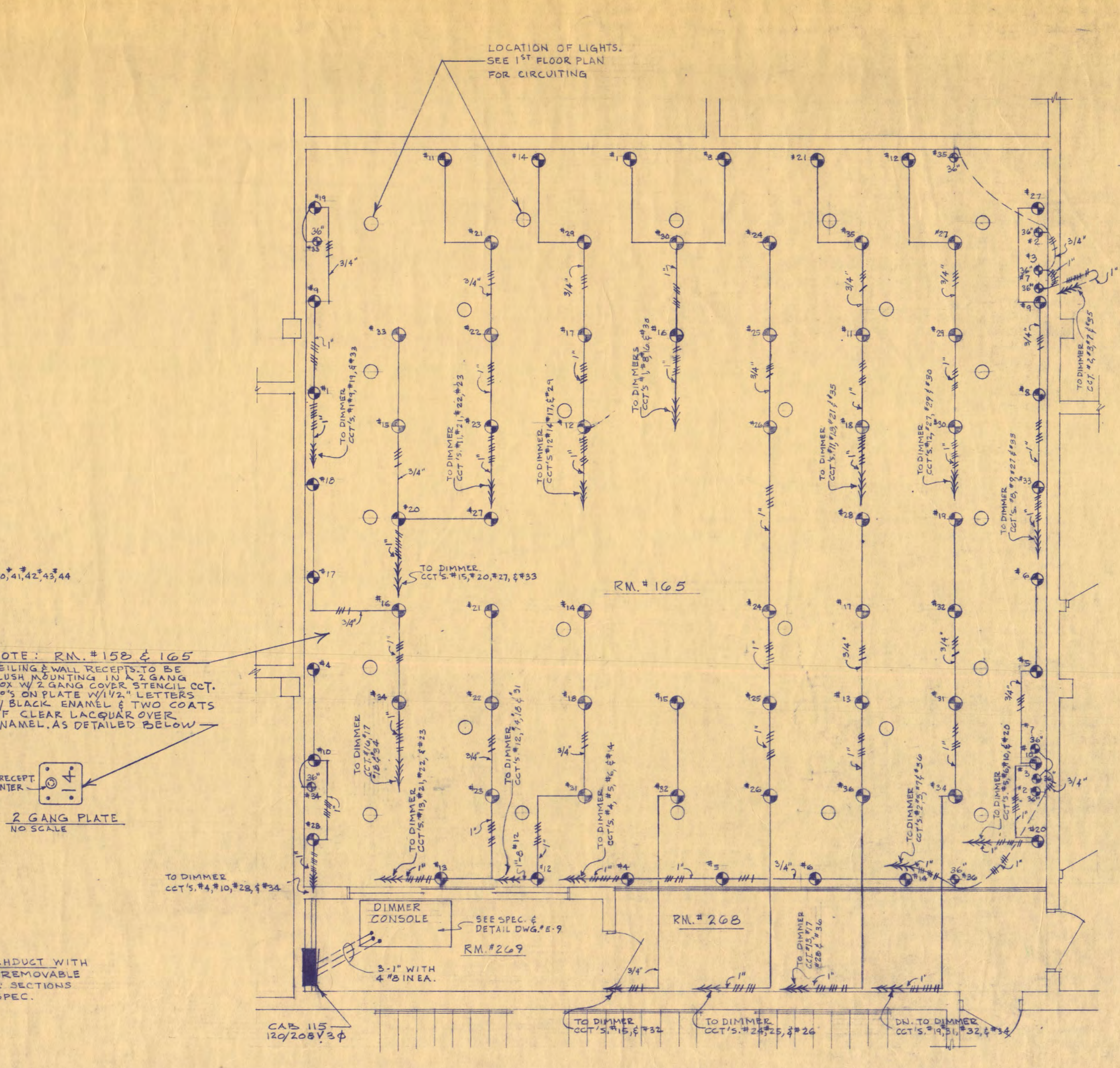
SCHEMATIC WIRING DIAGRAM
 OF VERT. LIGHT STRIP NEXT TO
 SPIRAL STAIR ON STAGE

WALTER BUTLER COMPANY	
HAARSTICK LUNDGREN AND ASSOCIATES INC	
ARCHITECTS	ENGINEERS
ST. PAUL	MINN.
FINE ARTS BUILDING	
ST. CLOUD STATE COLLEGE	
ST. CLOUD, MINNESOTA	
DEPARTMENT OF ADMINISTRATION - STATE OF MINNESOTA	
A. J. NELSON	STATE ARCHITECT
STATE PROJECT NO. 3750	APPROVED BY: PRESIDENT, ST. CLOUD STATE COLLEGE
CONTRACT NO. 6401	APPROVED BY: EXECUTIVE DIRECTOR, STATE COLLEGE BOARD
DATE JUNE 15, 1964	APPROVED BY: COMMISSIONER OF ADMINISTRATION
DRAWN BY J.P.F.J.K.	I HEREBY CERTIFY THAT THIS DRAWING WAS PREPARED BY ME OR UNDER MY DIRECT SUPERVISION AND THAT I AM A REGISTERED ENGINEER UNDER THE LAWS OF THE STATE OF MINNESOTA.
CHECKED BY R.E.H.P.O.H.L.	REG. NO. _____
SHEET NO. E-7	ELECTRICAL
FEDERAL GRANT NO. MINN. 4-1864	REV. DATE: 5-12-1964
OF SHEETS	1 1/4" SCALE PLAN, MAIN THEATER & STAGE, LIGHTING & POWER



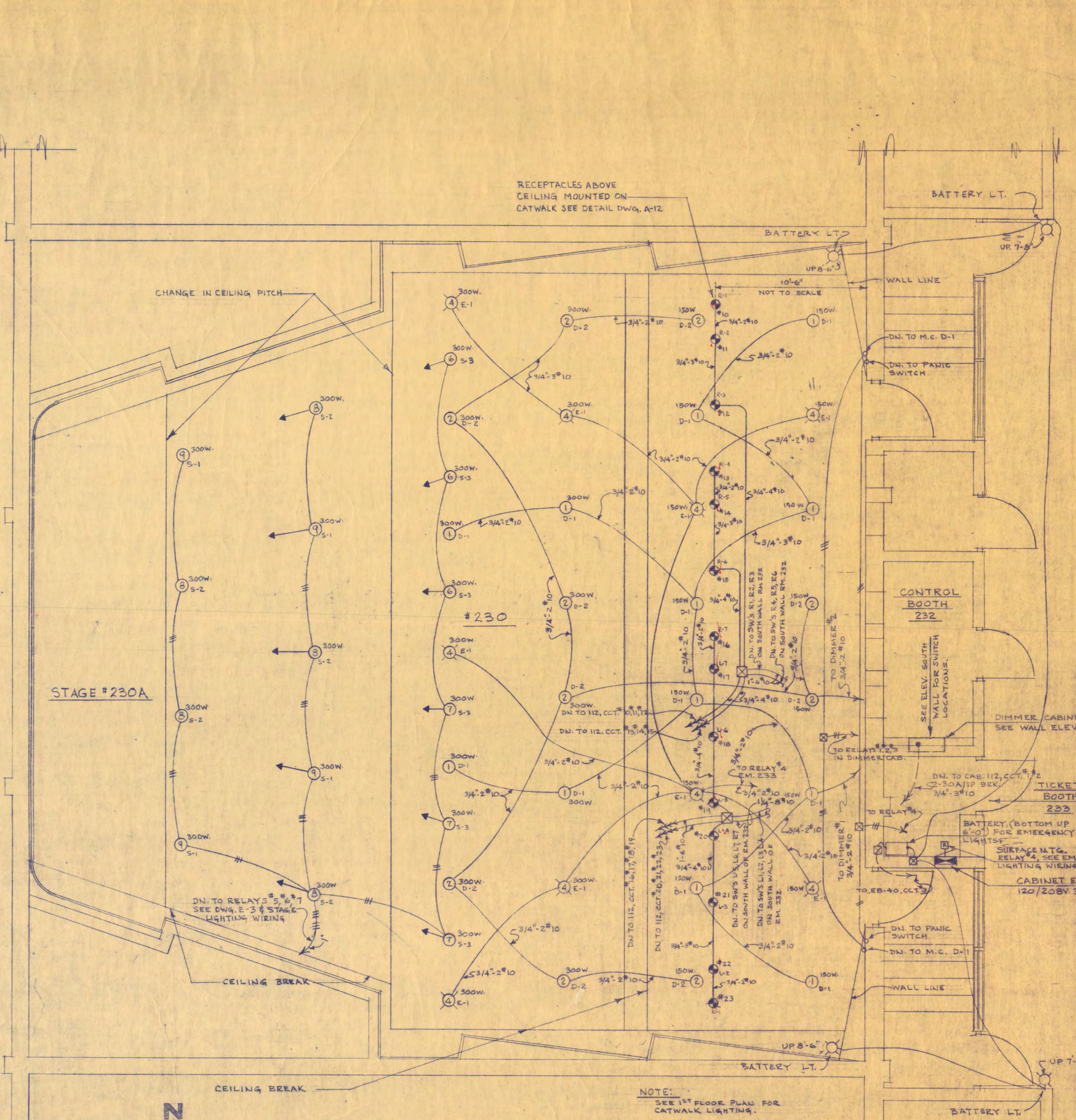
1/4" PLAN OF TV & RADIO ROOMS
GROUND FLOOR
1/4" x 11'-0"

NOTE: SEE 110' GROUND FLOOR PLAN FOR LIGHTING OF THESE RMs.



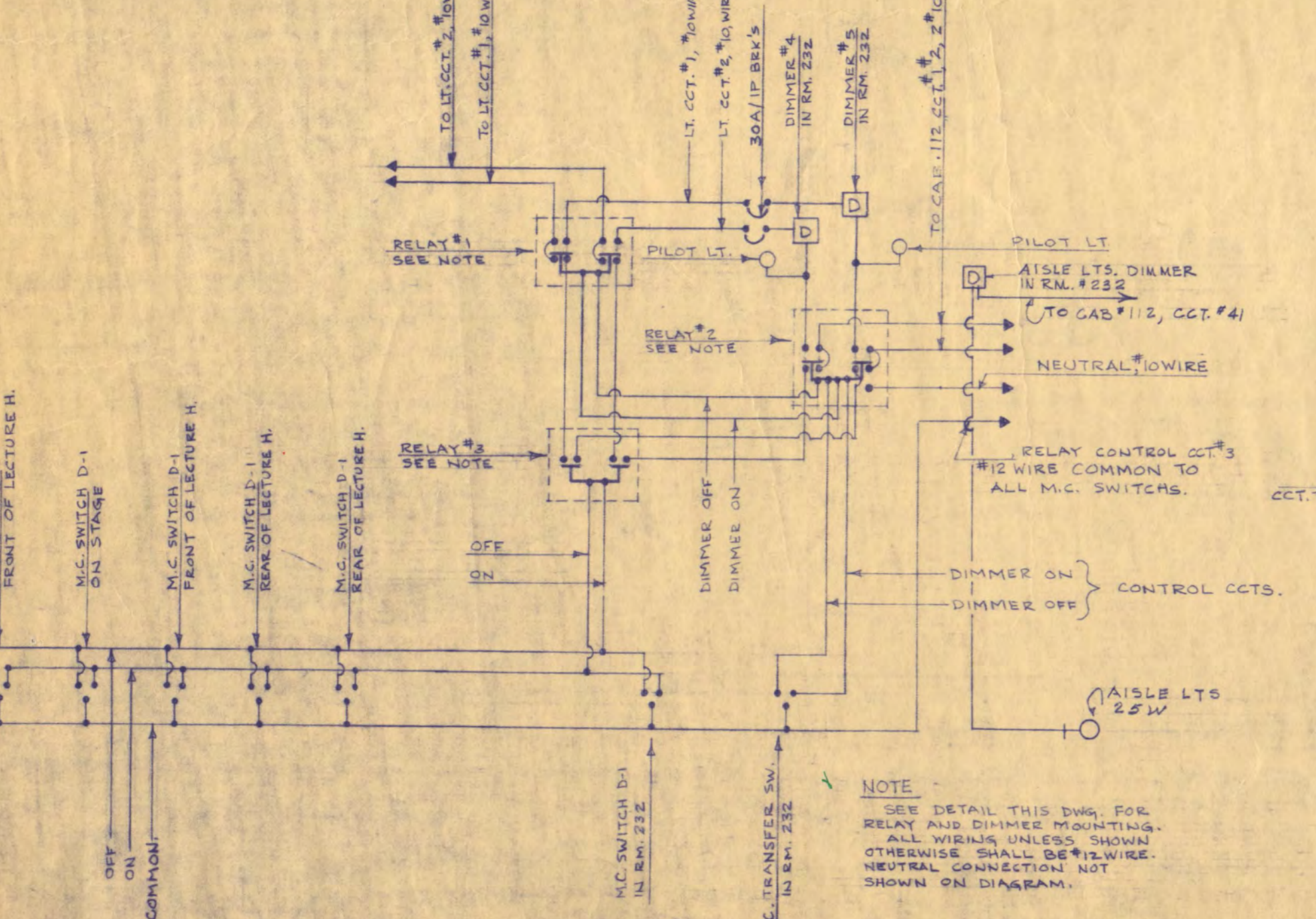
1/4" REFLECTED CEILING PLAN OF DRAMA REHEARSAL ROOM 165, RECEPTACLES & CIRCUITING

NOTE: SEE 1ST FLOOR PLAN FOR LIGHTING.



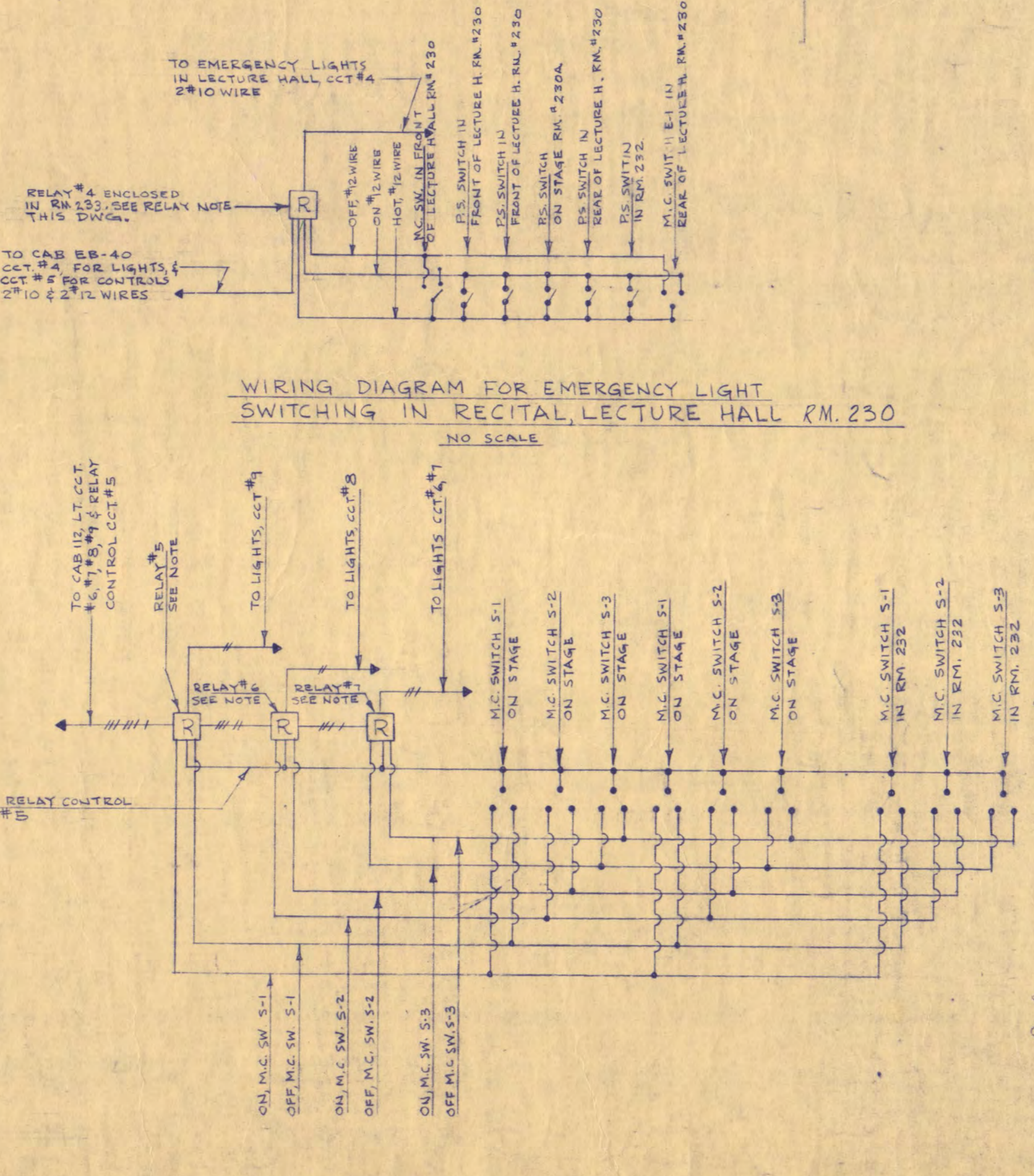
1/4" REFLECTED CEILING PLAN OF RECITAL LECTURE HALL, RM. 230 & 230A
1/4" x 21'-0"

NOTE: SEE 1ST FLOOR PLAN FOR CATWALK LIGHTING.



SCHEMATIC WIRING DIAGRAM FOR HOUSE LIGHT SWITCHING IN RECITAL LECTURE HALL RM. 230
NO SCALE

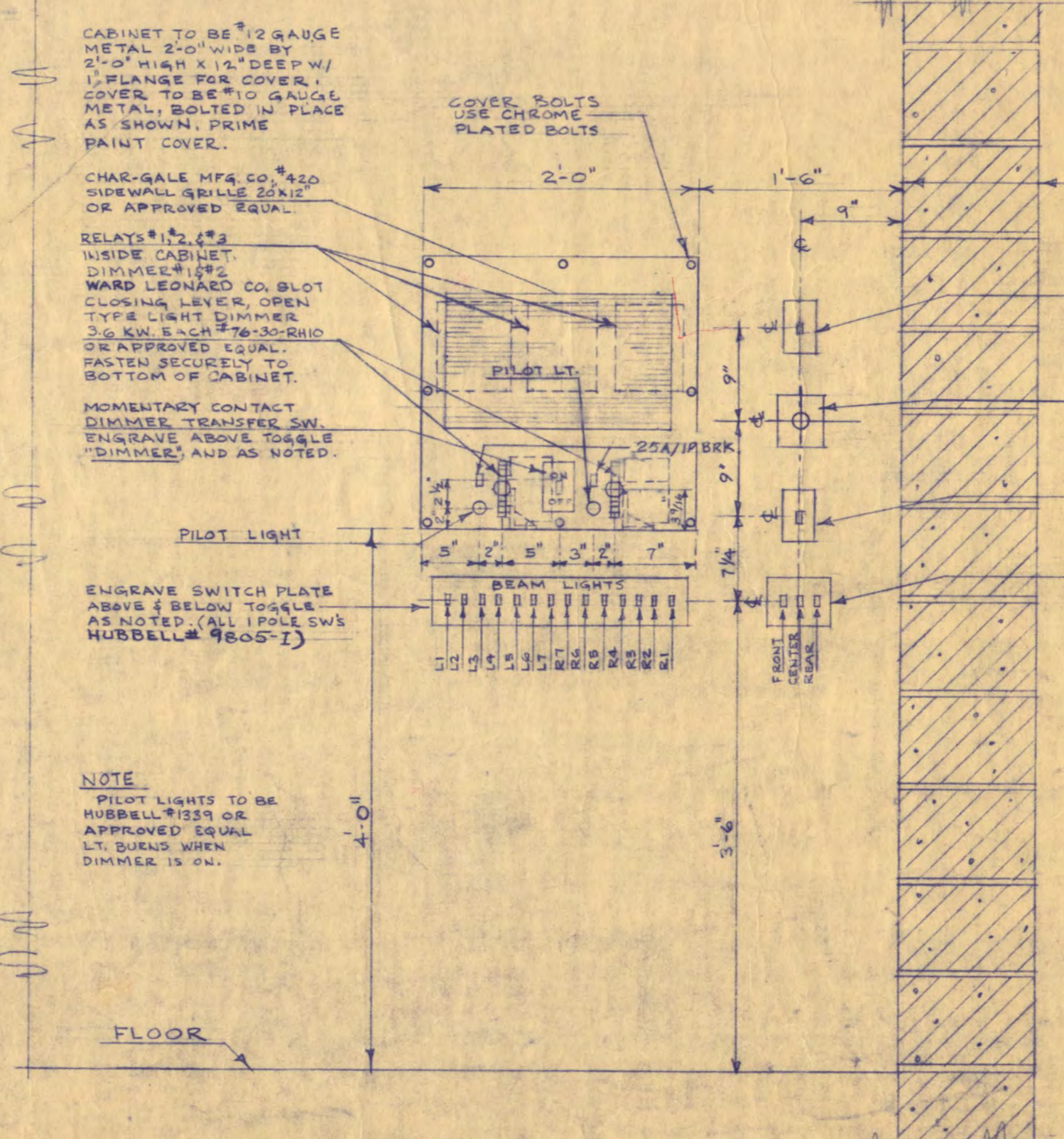
ALL WIRING UNLESS SHOWN OTHERWISE SHALL BE #12 WIRE
NEUTRAL CONNECTION NOT SHOWN ON DIAGRAM



WIRING DIAGRAM FOR EMERGENCY LIGHT SWITCHING IN RECITAL LECTURE HALL RM. 230
NO SCALE

SCHEMATIC WIRING DIAGRAM FOR STAGE LIGHT SWITCHING IN RECITAL LECTURE HALL RM. 230
NO SCALE

ALL WIRING #12 WIRE



ELEV SOUTH WALL OF CONTROL BOOTH RM 232
SHOWING LIGHTING CONTROLS FOR RECITAL LECTURE HALL RM. 230
1/4" x 1'-0"

NOTE: SEE SCHEMATIC WIRING DIAGRAM OF RECITAL LECTURE HALL THIS DWG. FOR CIRCUITING.

RELAY SCHEDULE

RELAY #1	ASCO #16822, 2 N.O. & 2 N.C. POLES, OPEN TYPE
RELAY #2	ASCO #16822, 2 N.O. & 2 N.C. POLES, OPEN TYPE
RELAY #3	ASCO #16820, 2 N.O. POLES, OPEN TYPE
RELAY #4	ASCO #16820, 2 N.O. POLES, ENCLOSED TYPE
RELAY #5	ASCO #16820, 2 N.O. POLES, OPEN TYPE
RELAY #6	ASCO #16610, 1 N.O. POLE, OPEN TYPE
RELAY #7	ASCO #16620, 2 N.O. POLES, OPEN TYPE
RELAY #8	ASCO #16630, 3 N.O. POLES, ENCLOSED TYPE
RELAY #9	ASCO #16820, 2 N.O. POLES, ENCLOSED TYPE
RELAY #10	ASCO #16820, 2 N.O. POLES, ENCLOSED TYPE
RELAY #11	ASCO #16830, 3 N.O. POLES, ENCLOSED TYPE
RELAY #12	ASCO #16840, 4 N.O. POLES, ENCLOSED TYPE
RELAY #13	ASCO #16630, 3 N.O. POLES, ENCLOSED TYPE

WALTER BUTLER COMPANY
HAARSTAD LUNDGREN AND ASSOCIATES INC.
ARCHITECTS ST. PAUL ENGINEERS MINN.

FINE ARTS BUILDING
ST. CLOUD STATE COLLEGE
ST. CLOUD, MINNESOTA
DEPARTMENT OF ADMINISTRATION - STATE OF MINNESOTA
A. J. NELSON STATE ARCHITECT

STATE PROJECT NO. 3750
COMAK NO. 6401
DATE: JUNE 15, 1965
DRAWN BY: J.P. JK
CHECKED BY: R.E. FOHL

I HEREBY CERTIFY THAT THE DRAWING WAS PREPARED BY ME OR UNDER MY DIRECT SUPERVISION AND THAT I AM A REGISTERED ARCHITECT UNDER THE LAWS OF THE STATE OF MINNESOTA.
REG. NO. 5-8

FEDERAL GRANT NO. MINN. 4-1884
REV. DATE: 5-10-65
OF SHEETS: 11/4" SCALE PLAN, T.V. STUDIO, REHEARSAL & LECTURE HALLS