

1 ELEV. RM. 14 SCALE: 1/4" = 1'-0"
1A SECTION SCALE: 1/4" = 1'-0"
2 ELEV. RM. 14 SCALE: 1/4" = 1'-0"
3 ELEV. RM. 13 SCALE: 1/2" = 1'-0"
3A SECTION SCALE: 1/4" = 1'-0"
4 ELEV. RM. 08 SCALE: 1/4" = 1'-0"
4A SECTION SCALE: 1/4" = 1'-0"
5 ELEV. RM. 11 SCALE: 1/4" = 1'-0"
5A SECTION SCALE: 1/4" = 1'-0"

6 ELEV. RM. 04 SCALE: 1/4" = 1'-0"
6A ELEV. RM. 04 SCALE: 1/4" = 1'-0"
9 ELEV. RM. 25 SCALE: 1/4" = 1'-0"
9A SECTION SCALE: 1/4" = 1'-0"
11 ELEV. RM. 28 SCALE: 1/4" = 1'-0"
11A SECTION SCALE: 1/4" = 1'-0"
12 ELEV. RM. 29 SCALE: 1/4" = 1'-0"
12A ELEV. RM. 29 SCALE: 1/4" = 1'-0"

15 ELEV. RM. 33 SCALE: 1/4" = 1'-0"
16 ELEV. RM. 33 SCALE: 1/4" = 1'-0"
17 ELEV. RM. 33 SCALE: 1/4" = 1'-0"
17A SECTION SCALE: 1/4" = 1'-0"
18 ELEV. RM. 33 SCALE: 1/4" = 1'-0"
19 ELEV. RM. 34 SCALE: 1/4" = 1'-0"
19A SECTION SCALE: 1/4" = 1'-0"

21 ELEV. RM. 60 SCALE: 1/4" = 1'-0"
21A SECTION SCALE: 1/4" = 1'-0"
22 ELEV. RM. 61 SCALE: 1/4" = 1'-0"
23 ELEV. RM. 56 SCALE: 1/4" = 1'-0"
23A SECTION SCALE: 1/4" = 1'-0"
24 ELEV. RM. 64 SCALE: 1/4" = 1'-0"
25 ELEV. RM. 101 SCALE: 1/4" = 1'-0"
25A SECTION SCALE: 1/4" = 1'-0"

26 ELEV. RM. 102 SCALE: 1/4" = 1'-0"
27 ELEV. RM. 102 SCALE: 1/4" = 1'-0"
28 ELEV. RM. 102 & 103 SCALE: 1/4" = 1'-0"
29 ELEV. RM. 103 SCALE: 1/4" = 1'-0"
30 ELEV. RM. 111 SCALE: 1/4" = 1'-0"
31 ELEV. RM. 110 SCALE: 1/4" = 1'-0"
31A SECTION SCALE: 1/4" = 1'-0"

32 ELEV. RM. 110 SCALE: 1/4" = 1'-0"
33 ELEV. RM. 113 SCALE: 1/4" = 1'-0"
34 ELEV. RM. 113 SCALE: 1/4" = 1'-0"
35 ELEV. RM. 113 SCALE: 1/4" = 1'-0"
36 ELEV. RM. 122 SCALE: 1/4" = 1'-0"
36A TIP SECTION SCALE: 1/4" = 1'-0"
37 ELEV. RM. 126 SCALE: 1/4" = 1'-0"

38 ELEV. RM. 122 SCALE: 1/4" = 1'-0"
39 ELEV. RM. 125 SCALE: 1/4" = 1'-0"
40 ELEV. RM. 125 SCALE: 1/4" = 1'-0"
41 ELEV. RM. 125 SCALE: 1/4" = 1'-0"
42 ELEV. RM. 122 SCALE: 1/4" = 1'-0"
43 ELEV. RM. 124 SCALE: 1/4" = 1'-0"
44 ELEV. RM. 121 SCALE: 1/4" = 1'-0"

45 ELEV. RM. 146 SCALE: 1/4" = 1'-0"
45A SECTION SCALE: 1/4" = 1'-0"
46 ELEV. RM. 147 SCALE: 1/4" = 1'-0"
47 ELEV. RM. 146 SCALE: 1/4" = 1'-0"
48 ELEV. RM. 116 SCALE: 1/4" = 1'-0"
48A SECTION SCALE: 1/4" = 1'-0"
49 ELEV. RM. 116 SCALE: 1/4" = 1'-0"
50 ELEV. RM. 106, 107 SCALE: 1/4" = 1'-0"
50A SECTION SCALE: 1/4" = 1'-0"

I HEREBY CERTIFY THAT THIS PLAN SPECIFICATION OR REPORT WAS PREPARED BY ME OR UNDER MY DIRECT SUPERVISION AND THAT I AM A DULY REGISTERED ARCHITECT/ENGINEER UNDER THE LAWS OF THE STATE OF MINNESOTA.

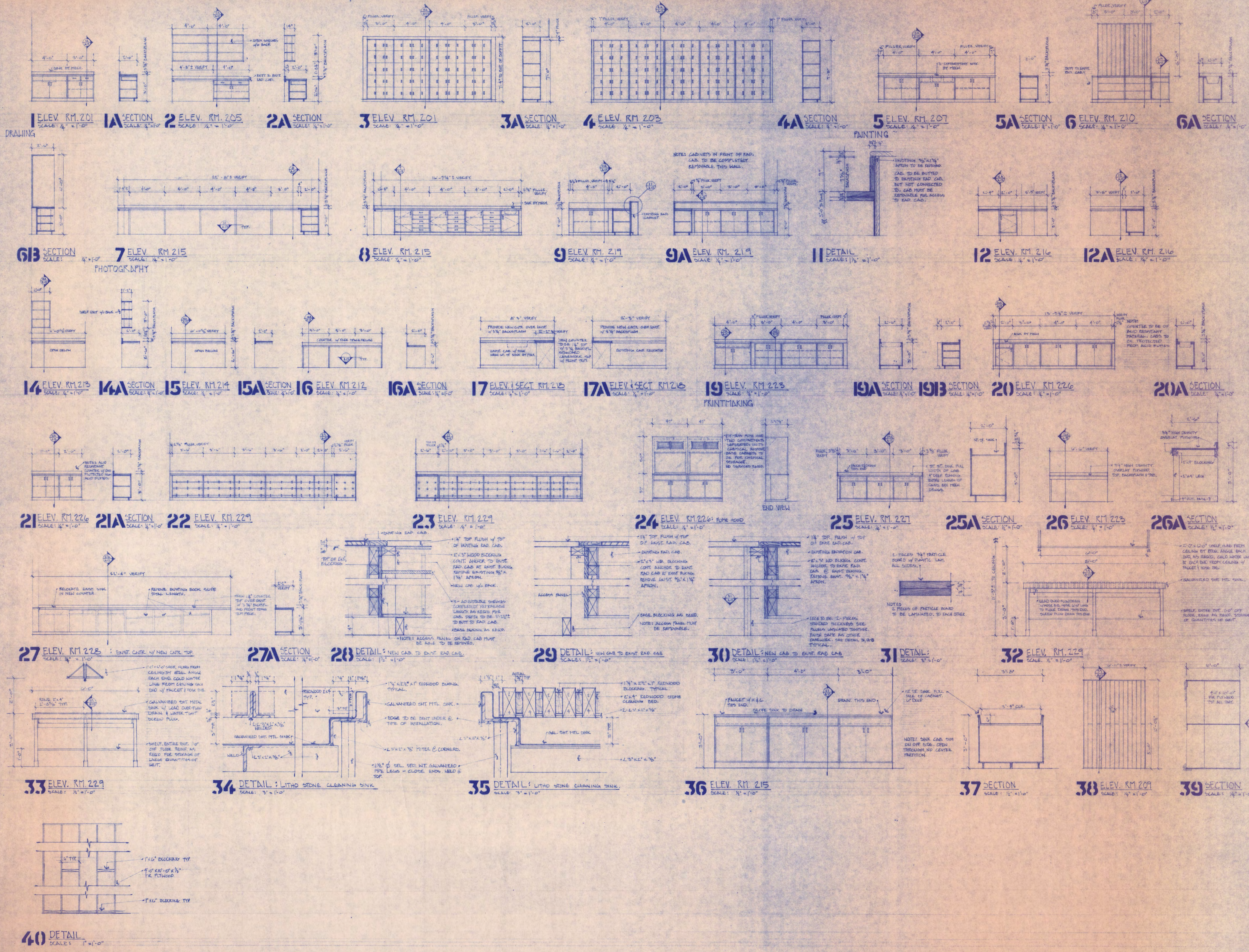
DATE: _____ REG. NO.: _____



KIEHLE HALL REMODELING FOR VISUAL ARTS DEPARTMENT

ST. CLOUD STATE COLLEGE
 ST. CLOUD, MINNESOTA

REVISIONS	PROJECT NO. 7137
	ISSUE DATE
	DRAWN BY PDD
	CHECKED
	APPROVED ARCHITECT
	APPROVED OWNER
	SCALE AS NOTED



GENERAL NOTES

I HEREBY CERTIFY THAT THIS PLAN SPECIFICATION OR REPORT WAS PREPARED BY ME OR UNDER MY DIRECT SUPERVISION AND THAT I AM A DULY REGISTERED ARCHITECT/ENGINEER UNDER THE LAWS OF THE STATE OF MINNESOTA.

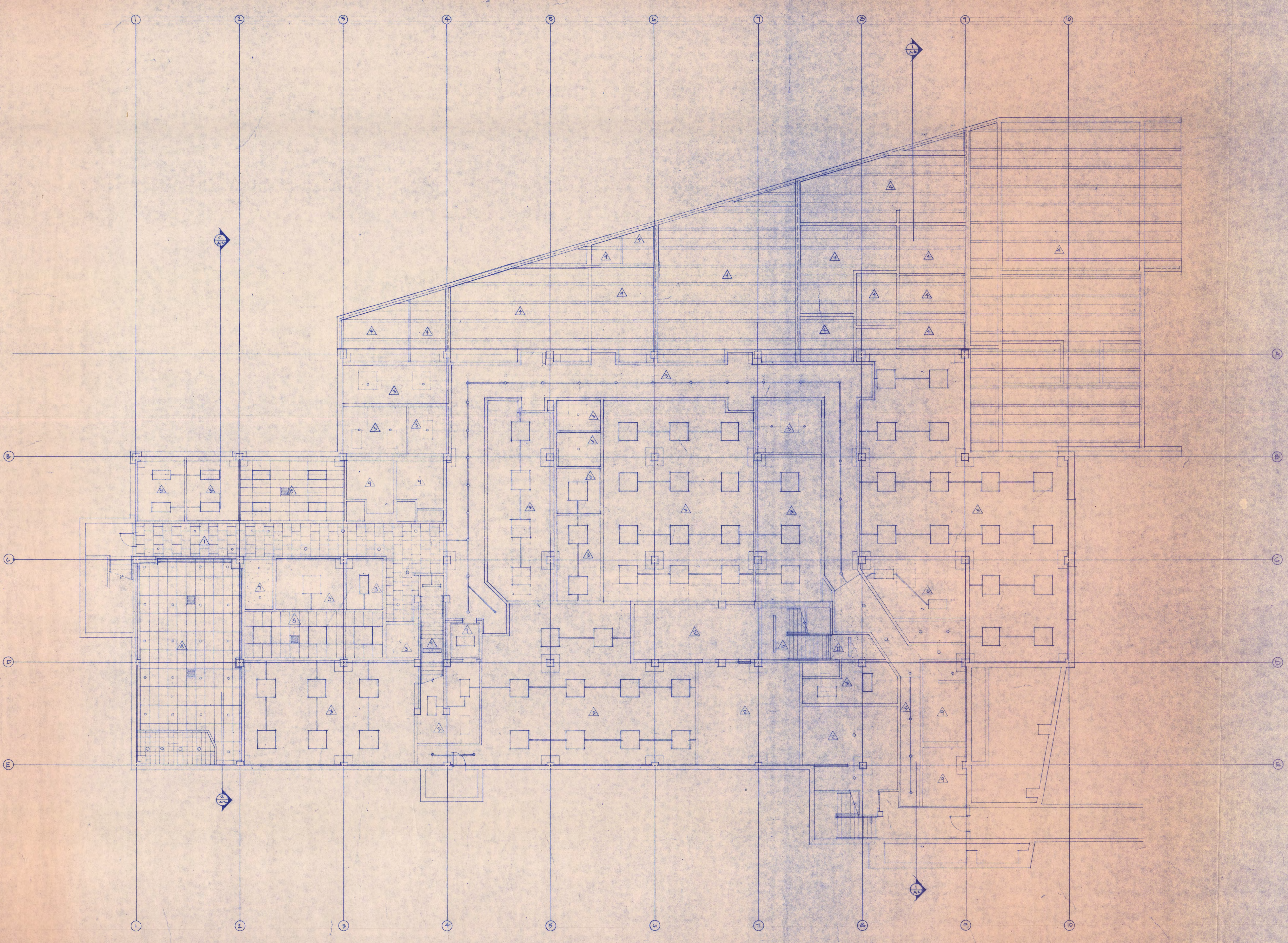
DATE: _____ REG. NO. _____

WEBLINGER, REMELY AND ASSOCIATES INC.
 ARCHITECTS AND ENGINEERS
 803 5TH WEST SAINT CLOUD, MINNESOTA 56301
 TELEPHONE 818-283-9100

KIEHLE HALL REMODELING FOR VISUAL ARTS DEPARTMENT
 ST. CLOUD STATE COLLEGE
 ST. CLOUD, MINNESOTA

REVISIONS	PROJECT NO. 7197
	ISSUE DATE
	DRAWN BY: PDR
	CHECKED
	APPROVED ARCHITECT
	APPROVED OWNER
	SCALE: AS NOTED

A-13
 PROJ. TOTAL SHEETS: 13



- GENERAL NOTES
- △ SUSPENDED CEILING
 - △ EXISTING CEILING TO REMAIN
 - △ EXISTING STRUCT. SPRAY PAINTED (TEXTURED)
 - △ EXPOSED PRECAST STRUCTURE
 - △ CONCEALED Z SPLINE-ACOUST. TILE
 - △ CEMENT PLASTER
 - △ DRYWALL PAINTED (L)
 - △ LATH ACROUSTICAL BOARD
 - △ EXISTING CEILING PAINTED (L)
 - △ EXISTING W/ VINYL
 - △ DRYWALL W/ VINYL

I HEREBY CERTIFY THAT THIS PLAN SPECIFICATION OR REPORT WAS PREPARED BY ME OR UNDER MY DIRECT SUPERVISION AND THAT I AM A DULY REG. LICENSED ARCHITECT/ENGINEER UNDER THE LAWS OF THE STATE OF MINNESOTA.

DATE _____ REG. NO. _____

WEHLINGER-REMELY AND ASSOCIATES INC.
 ARCHITECTS AND ENGINEERS
 BOX 818 BOX WEST SAINT GERMAIN
 SAINT CLOUD, MINNESOTA 56301
 TELEPHONE 812-253-8100

**KIEHLE HALL
 FOR
 VISUAL ARTS
 DEPARTMENT**

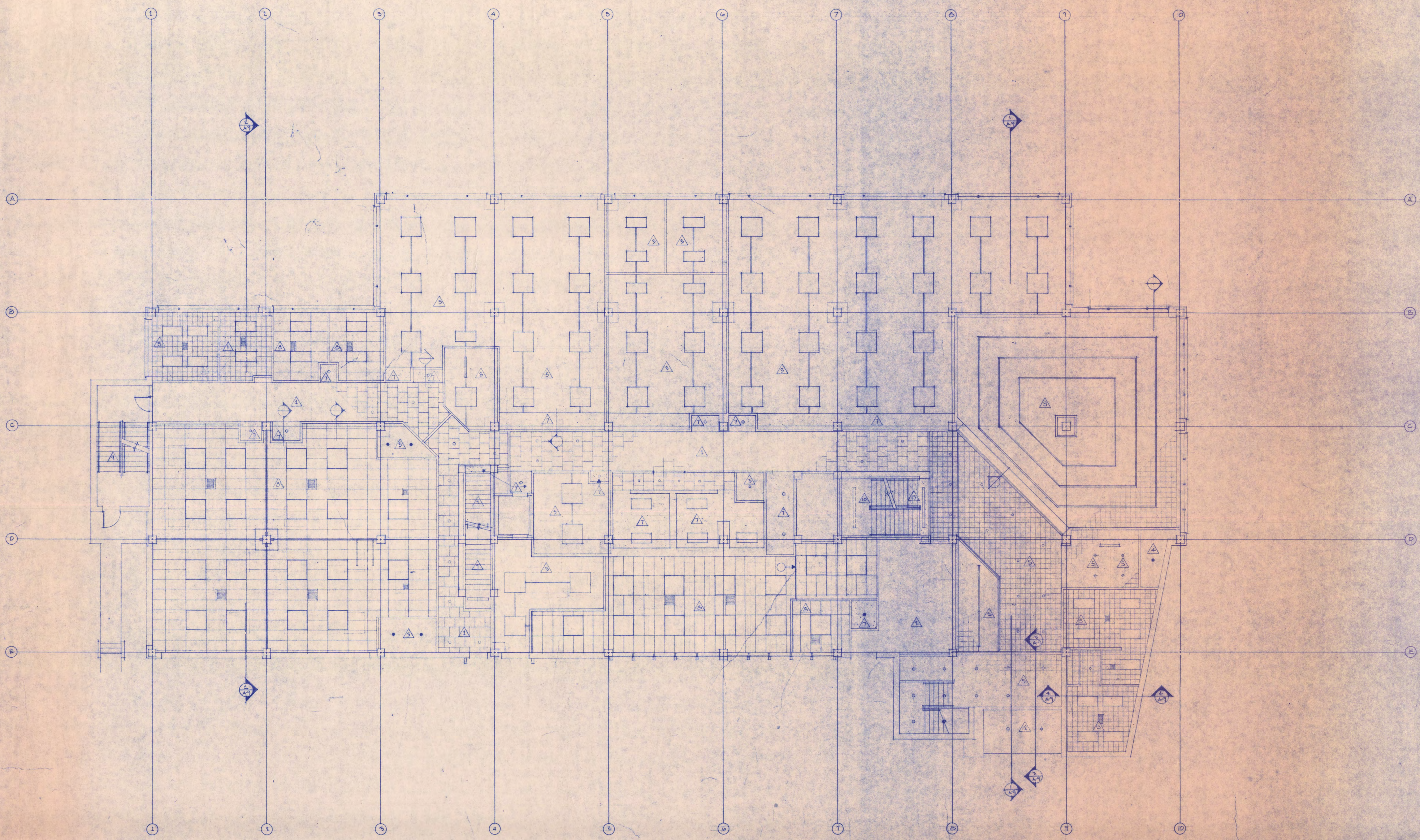
**ST. CLOUD STATE COLLEGE
 ST. CLOUD, MINNESOTA**

REVISIONS	PROJECT NO. 7137
	ISSUE DATE
	DRAWN BY
	CHECKED
	APPROVED ARCHITECT
	APPROVED OWNER
	SCALE

A-14
 PROJ. TOTAL SHEETS

BASEMENT FLOOR REFLECTED CEILING PLAN
 SCALE: 1/8" = 1'-0"

- GENERAL NOTES
- △ SUSPENDED CEILING
 - △ EXISTING CEILING TO REMAIN
 - △ EXISTING STRUCT. SPRAY PAINTED (TEXTURED)
 - △ EXPOSED PRECAST STRUCTURE
 - △ CONCEALED T-SPLINE - ACROST TILE
 - △ CEMENT PLASTER
 - △ DRYWALL PAINTED (P)
 - △ EXISTING ACROSTICAL BOARD
 - △ EXISTING CEILING PAINTED (L)
 - △ EXISTING CEILING W/ VINYL
 - △ DRYWALL W/ VINYL



FIRST FLOOR REFLECTED CEILING PLAN
 SCALE: 1/8" = 1'-0"

I HEREBY CERTIFY THAT THIS PLAN SPECIFICATION OR REPORT WAS PREPARED BY ME OR UNDER MY DIRECT SUPERVISION AND THAT I AM A DULY REGISTERED ARCHITECT/ENGINEER UNDER THE LAWS OF THE STATE OF MINNESOTA.

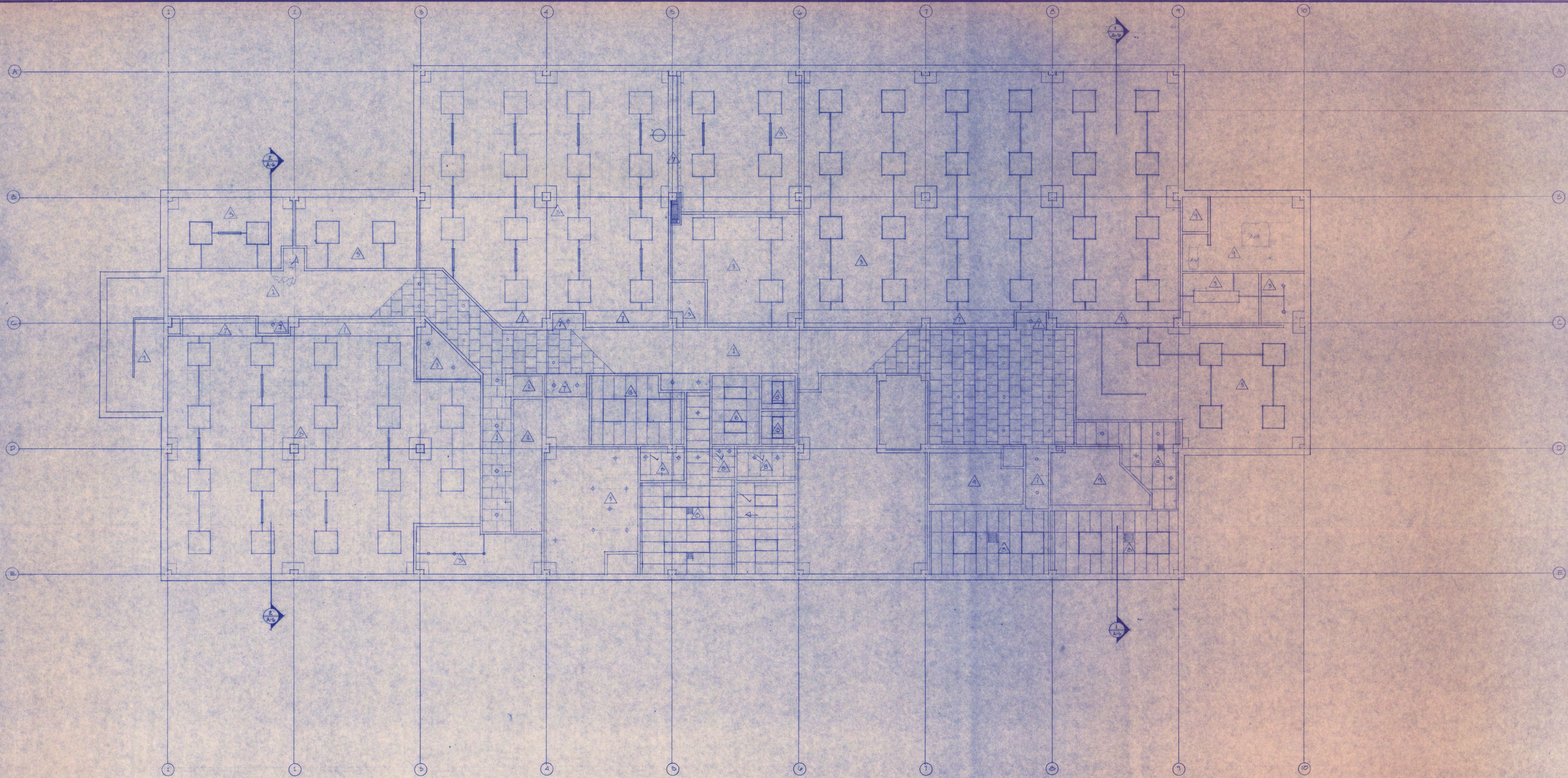
DATE _____ REG. NO. _____

WEHLINGER - REMELY AND ASSOCIATES INC.
 ARCHITECTS AND ENGINEERS
 804 5th S.W. WEST SAINT GERMAIN
 SAINT CLOUD, MINNESOTA 56301
 TELEPHONE 812-253-8100

**KIEHLE HALL
 FOR
 VISUAL ARTS
 DEPARTMENT**

ST. CLOUD STATE COLLEGE
 ST. CLOUD, MINNESOTA

REVISIONS	PROJECT NO. 7137
	ISSUE DATE
	DRAWN BY
	CHECKED ARCHITECT
	APPROVED ARCHITECT
	APPROVED OWNER
	SCALE



- GENERAL NOTES
- △ SUSPENDED CEILING
 - △ EXISTING CEILING TO REMAIN
 - △ EXISTING WALL - SPRAY PAINTED (DOWDED)
 - △ EXPOSED PRECAST STRUCTURE
 - △ COATED Z FLASHING - ADJUST TILE
 - △ CEMENT PLASTER
 - △ DRYWALL PAINTED (L)
 - △ DAY-IN ACoustICAL BOARD
 - △ EXISTING TO REMAIN - PAINT (L) - REMOVE ALL DAMAGED TILE WITH CORRESPONDING TILE TYPES
 - △ CEILING CEILING WITH VINYL
 - △ DRYWALL WITH VINYL

SECOND FLOOR REFLECTED CEILING PLAN
 SCALE: 1/8" = 1'-0"

I HEREBY CERTIFY THAT THIS PLAN SPECIFICATION OR REPORT WAS PREPARED BY ME OR UNDER MY DIRECT SUPERVISION AND THAT I AM A DULY REGISTERED ARCHITECT/ENGINEER UNDER THE LAWS OF THE STATE OF MINNESOTA.

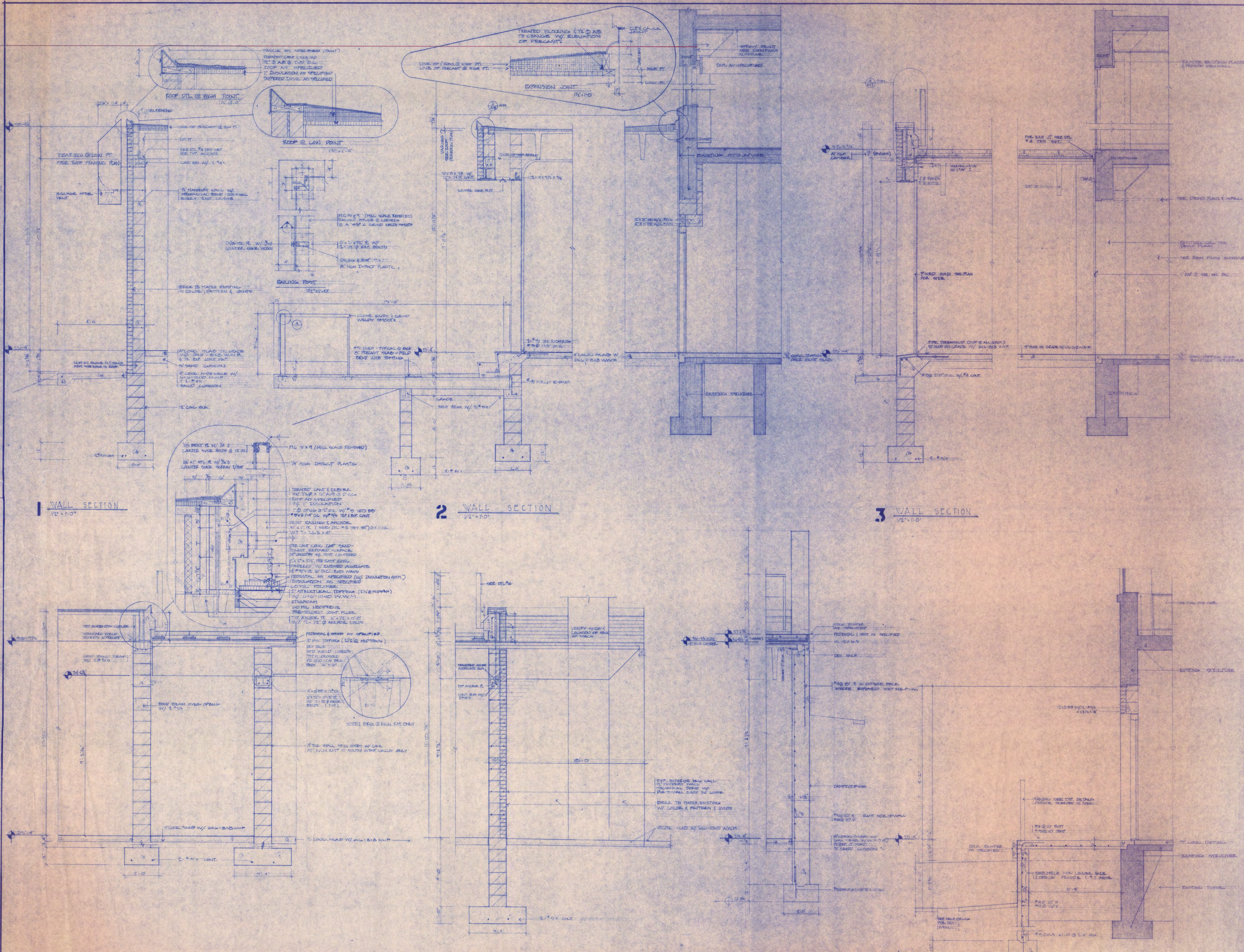
DATE _____ REG. NO. _____

WEMLINGER-REMELY AND ASSOCIATES INC.
 ARCHITECTS AND ENGINEERS
 BOX 519 801 WEST SAINT GERMAIN
 SAINT CLOUD, MINNESOTA 56301
 TELEPHONE 812-253-8100

**KIEHLE HALL
 FOR
 VISUAL ARTS
 DEPARTMENT**

ST. CLOUD STATE COLLEGE
 ST. CLOUD, MINNESOTA

REVISIONS	PROJECT NO. 7137
	ISSUE DATE
	DRAWN BY
	CHECKED
	APPROVED ARCHITECT
	APPROVED OWNER
	SCALE



GENERAL NOTES

I HEREBY CERTIFY THAT THIS PLAN SPECIFICATION OR REPORT WAS PREPARED BY ME OR UNDER MY DIRECT SUPERVISION AND THAT I AM A DULY REGISTERED ARCHITECT/ENGINEER UNDER THE LAWS OF THE STATE OF MINNESOTA.

DATE: _____ REG. NO. _____

WEMLINGER-REMLY AND ASSOCIATES INC.
ARCHITECTS AND ENGINEERS
808 515 501 WEST SAINT GERMAIN
SAINT CLOUD, MINNESOTA 56301
TELEPHONE 818-853-8100

KIEHLE HALL REMODELING FOR VISUAL ARTS DEPARTMENT

ST. CLOUD STATE COLLEGE
ST. CLOUD, MINNESOTA

REVISIONS	PROJECT NO.	ISSUE DATE
	7137	
	DRAWN BY	
	CHECKED	
	APPROVED ARCHITECT	
	APPROVED OWNER	
	SCALE	

A-17
PROJ. TOTAL 54/113