

NOTES

1. V. SHOWN ON SCHEDULE INDICATES TYPICAL

2. DOOR STYLE

3. ALL DOORS 1 3/4" THICK UNLESS NOTED OTHERWISE

4. DOOR CONSTRUCTION TYPICAL = SOLID CORE
 AL = ALUMINUM CLAD GLASS
 HC = HOLLOW CORE
 HM = HOLLOW METAL
 IM = INSULATED HOLLOW METAL

5. FINISH & FINISH TYPICAL = RED OAK, TRANSPARENT
 AA = ANODIZED ALUMINUM EXPOSED
 MP = METAL PAINTED
 PL = PLASTIC LAMINATE

6. GLASS TYPICAL = CLEAR PLATE
 20 = SHEET GLASS
 TP = TEMPERED PLATE
 W = WIRE GLASS

7. LEATHING 20 & 20 MINUTE FIRE RATING ALL OTHER NUMBERS INDICATE HOURS OF FIRE RATING

8. TYPICAL REFRAMES SHOWN W/ NUMBER INDICATES DETAIL

9. HARDWARE GROUP

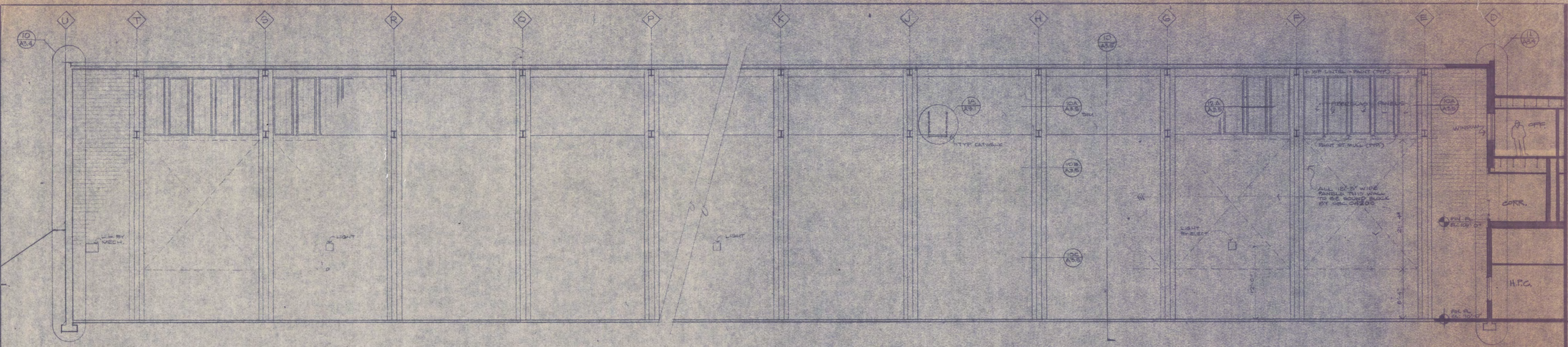
DOOR SCHEDULE

DOOR MARK	OPENING SIZE	STYLE (NOTE 2)	THICKNESS (3)	CONSTRUCTION (4)	FACE & FIN (5)	GLASS (6)	RATING (7)	HEAD (8)	JAMB (8)	SILL (8)	TYPE (8)	REMARKS
1	3'-0" x 7'-10"	C	✓	HM MP TP	-	10C	✓	✓	✓	✓	✓	
2	3'-0" x 6'-10"	A	✓	HM MP	-	-	✓	✓	✓	✓	✓	
3	3'-0" x 6'-10"	A	✓	HM MP	-	-	✓	✓	✓	✓	✓	SEE ALSO 2A2 A
4	3'-0" x 6'-4"	A	✓	HM MP	-	-	10E	✓	✓	✓	✓	SEE ALSO 2A2 A
5	3'-4" x 6'-10"	A	✓	HM MP	-	-	✓	✓	✓	✓	✓	
7	6'-0" x 6'-10"	EE	✓	HM MP WG	20	✓	✓	✓	✓	✓	✓	
8	3'-0" x 6'-10"	E	✓	HM MP WG	20	✓	✓	✓	✓	✓	✓	
9	3'-0" x 6'-10"	A	✓	✓	✓	-	✓	✓	✓	✓	✓	
10	3'-0" x 6'-10"	A	✓	✓	✓	-	20	✓	✓	✓	✓	
11	3'-4" x 6'-10"	A	✓	HM MP	-	1/2	✓	✓	✓	✓	✓	
12	3'-0" x 6'-10"	A	✓	HM MP	-	-	✓	✓	✓	✓	✓	
13	3'-0" x 6'-10"	A	✓	HM MP	-	20	✓	✓	✓	✓	✓	
14	3'-4" x 6'-10"	A	✓	HM MP	-	3	✓	✓	✓	✓	✓	1 TO BE EXISTING
15	3'-0" x 6'-0"	D	✓	✓	✓	-	✓	✓	✓	✓	✓	

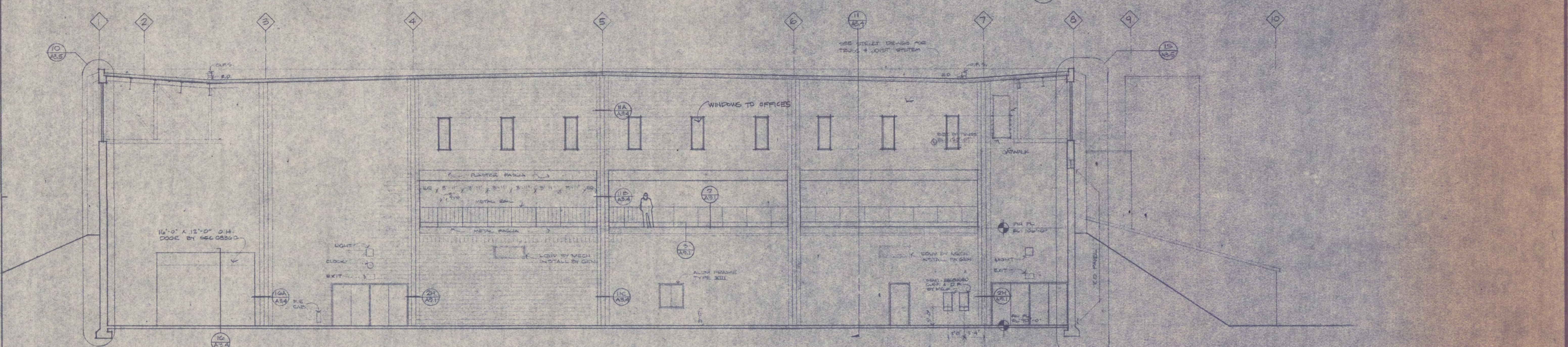
ROOM FINISH CODE

FLOOR/BASE	WALLS/VANSOT	CEILING
0 SPECIAL SEE DETAILS	0 SPECIAL SEE DETAILS	0 SPECIAL SEE DETAILS
1 TERRAZZO/SEALER BLOCK	A CONC. BLK.	1 SUSP. AC. PANEL TYPE 1
2 C.T./C.T.	B CONC. BLK. (PAINTED)	2 SUSP. AC. PANEL TYPE 2
3 VAT/VNYL	C CONC. BLK. (EPOXY PAINT)	3 SUSP. AC. PANEL TYPE 3
4 SEALED CONC. & GROUT	D CONC. BLK. & SOUND BLK.	4 SUSP. AC. PANEL TYPE 4
5 BRICK	E BRICK	5 GYPSUM PLASTER
6 SYNTHETIC SURFACE/NO BASE	F C.T.	6 PORTLAND CEM. PLASTER
7 TERRAZZO/BRICK & GRAZED BRICK	G CONC. BLK. & EXISTING	7 EXPOSED STRUCT.
8	H PLASTER	8
9	J POLURED CONC.	9
10	K POLURED CONC. & CONC. BLK.	10
11	L BRICK & CONC. BLK.	11
12	M	12
13	N	13

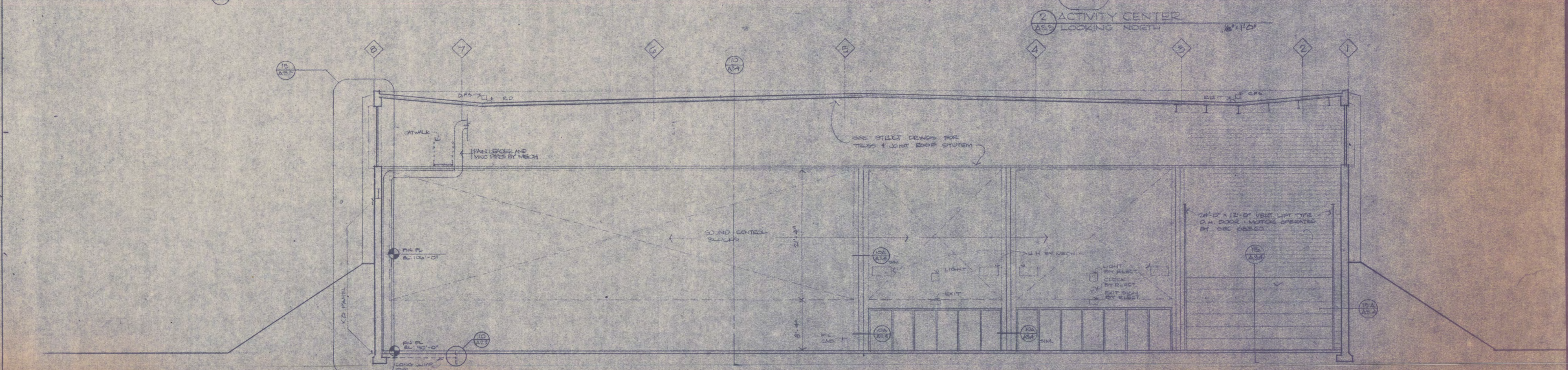
ROOM NAME
 ROOM NO.
 ROOM FINISH CODE
 FINISH CODE
 FINISH CODE
 FINISH CODE



1 ACTIVITY CENTER - LOOKING WEST



2 ACTIVITY CENTER
LOOKING NORTH



3 ACTIVITY CENTER & WRESTLING ROOM
LOOKING SOUTH

Sövik Mathre Sathrum Quanbeck Architects Planners | 205 South Water Street | Box 390 | Northfield Minnesota 55057 | 507-645-4461 | 612-336-8679
Halenbeck Hall Addition PHASE THREE
 St. Cloud State University
 St. Cloud Minnesota

STATE OF MINNESOTA
 Department of Administration
 Architectural & Engineering Div.
 Room 5-19 Amphipolplex Bldg.
 St. Paul, Minnesota 55101
 Associated L.O. No.

Revisions
 1. Check for all notes, conditions, notes, etc. made by the architect.
 2. Check for all notes, conditions, notes, etc. made by the architect.
 3. Check for all notes, conditions, notes, etc. made by the architect.

Job No. 1116
 Checked
 Drawn T.S. Date 12/1/71