

ST. CLOUD STATE UNIVERSITY LEARNING RESOURCES SERVICES CENTER SCHEMATIC DESIGN

Drawing Index

- 1 TITLE SHEET
- 2 EXISTING SITE SURVEY
- 3 SITE PLAN /SITE SECTION
- 4 BASEMENT PLAN
- 5 FIRST FLOOR PLAN
- 6 SECOND FLOOR PLAN
- 7 THIRD FLOOR PLAN
- 8 ROOF PLAN
- 9 BUILDING ELEVATIONS
- 10 BUILDING ELEVATIONS
- 11 ENLARGED ENTRY ELEVATION
- 12 BUILDING SECTIONS
- 13 PERSPECTIVES

Firm List

Architects: The Leonard Parker Associates
430 Oak Grove
Minneapolis, Minnesota 55403
Phone 612/871-6864 Fax 612/871-6868

Associate Architects: Setter, Leach & Lindstrom, Inc.
1100 Peavey Building
2nd Avenue at 8th Street
Minneapolis, Minnesota 55402-2454
Phone 612/338-8741 Fax 612/338-4840

Structural, Mechanical and Electrical Engineers: Setter, Leach & Lindstrom, Inc.
1100 Peavey Building
2nd Avenue at 8th Street
Minneapolis, Minnesota 55402-2454
Phone 612/338-8741 Fax 612/338-4840

Roof Consultants: Inspec, Inc.
4801 Duluth Street
Minneapolis, Minnesota 55422
Phone 612/546-3434

Code Summary

APPLICABLE CODES

Uniform Building Code, 1988 Edition
Minnesota Amendments to the 1988 Uniform Building Code, 1990 Edition
Uniform Mechanical Code, 1988 Edition
Minnesota Amendments to the 1988 Uniform Mechanical Code, 1990 Edition
Minnesota Plumbing Code, 1990 Edition
Minnesota Uniform Fire Code, 1989 Edition
National Fire Codes (from the NFPA), 1991 Edition
Model Energy Code, 1989 Edition
Minnesota Energy Code, 1991 Edition
NEC - National Electrical Code, 1993 Edition

CODE REVIEW SUMMARY

Building Area 235,500 sf including basement
Building Height 3 floors above grade, 61 ft ±

Occupancy Classification B2 (Table 33-A)

Occupancy Load Factor (sf/person)

Office	100	
Conference	15	
Reading Room	50	
Stacks Area	100	(estimated)
Archive	200	(estimated)
Classroom	20	
Auditorium		Number of seats
Mechanical/Electrical	300	

Construction Type II - FR (Table 5-C)
No separation required for Auditorium Assembly - A3

Allowable Area	39,900 sf	Basic
X 2		Multi-Story
X 2		4-Side Separation
X 2		Sprinklers

Total Allowable Area: 319,200 sf

Allowable height = 160 ft, 12-stories (Table 5-D)

OCCUPANT LOAD CALCULATION

Basement:

Archive	28,900 sf + 200 =	144.5
Mechanical/Electrical	18,750 sf + 300 =	62.5

Total Occupancy Load 207.0

First Floor:

Office	14,750 sf + 100 =	147.5
Stacks Area	11,300 sf + 100 =	113.0
Reading Room	26,650 sf + 50 =	533.0
Conference	1,100 sf + 15 =	73.0
Classroom	3,600 sf + 20 =	180.0
Entry & Checkout Lounge	4,700 sf + 100 =	47.0
Auditorium	550 sf + 15 =	37.0
		180.0

Total Occupancy Load 1310.5

Second Floor:

Office	13,450 sf + 100 =	134.5
Stacks Area	15,700 + 100 =	157.0
Reading Room	35,850 + 50 =	717.0
Classroom	4,800 + 20 =	240.0

Total Occupancy Load 1248.5

Third Floor:

Reading Room	34,000 + 50 =	680.0
--------------	---------------	-------

EXITS REQUIRED (Section 3303)

Basement:

2 exits required from Basement
2 exits required from Mechanical Room

First Floor:

4 exits required minimum

Total Exit Width

100% First Floor	1310.5
50% Second Floor	624.0
50% Basement	103.5
25% Third Floor	170.0

Total Exit Width Required: 2208.0 + 50 = 44.16 ft

Second Floor:

4 exits required minimum

Total Exit Width

100% Second Floor	1248.5
50% Third Floor	340.0

Total Exit Width Required 1588.5 + 50 = 31.77ft

Third Floor:

3 exits required minimum

Total Exit Width Required 680 + 50 = 13.6 ft.

FIRE RESISTIVE REQUIREMENTS - TYPE II (TABLE 17-A)

Exterior Walls (Non-bearing)	Non-combustible w/40 ft. yards
Structural Frame	2-HR
Partitions	1-HR
Shafts	2-HR
Floor/Ceilings	2-HR
Roof /Ceilings	1-HR

Structural frame shall be of steel, iron, concrete or masonry (Section 1902)

Stairs shall be constructed of concrete, iron, or steel - other noncombustible materials may be used for finish of treads and risers (Section 1905).

Roofs and roof framing more than 25 ft above any floor may be of unprotected, noncombustible construction. Heavy timber may be used for such unprotected construction only in one-story buildings (Section 1806).

STAIRWAYS (SECTION 3306)

Winding and spiral stairs may be used in Group R occupancies only.

Circular stairs must meet requirement of "inside radius = stair width x 2" and minimum 10" stair run.

Two-hour fire resistive enclosure required for stairways connecting more than two floors. Extent of enclosure shall include landing and parts of floors connecting stairway flights. Maximum of 50% of stair exits may discharge through a street level lobby (Section 3309).

ATRIUMS (SECTION 1715)

Smoke control system required.
Minimum clear opening = 20 ft diameter for 3 and 4 story atriums.
Minimum area = 400 sf.

Separation from adjoining spaces not required.

Project Data

AREA SUMMARY

Gross Building Area	Design
Lower Level	49,136
First Level	70,431
Second Level	68,920
Third Level	37,274
Total GSF	225,761 GSF

Net Assignable Area

Program	Design
Bookstacks, Circulations Collections	36,000 33,807
Primary - 13,762	
Research - 20,045	
Locker Alcove	450 448
Administration (2,630)	2,480 2,276
Interactive Information Services (7,915)	7,424 7,435
Reference Services (16,590)	15,545 17,863
Faculty Reading Room	350 473
Circulations (Access) Services (6,485)	4,729 6,181
Government Publications & Maps	5,225 6,046
Periodicals Service (8,460)	8,385 7,575
Resources Processing Services (4,770)	4,635 4,647
Special Collections	1,860 2,462
Center for Information Media (4,720)	4,770 5,943
Technical Support Services	1,980 2,746
Instructional Development Services (4,445)	4,615 4,853
Auditorium	2,000 2,461
Study Lounge and Vending extended use	1,390 1,373
Support Areas	400 855
Staff Lounge	500 528
Reading Study Areas (48,300)	53,600 57,469

Total NASF 166,338 165,442

Net Non-Assignable Area

Toilets and Janitorial	4,442
Mechanical/Electrical	16,328
Circulation	32,052
Total NASF	52,822

Roof Area

Metal Roof	18,000
Built-up Roof	52,500
Total RA	70,500

Building Efficiency

Net Assignable Area (total NASF)	165,442
Gross Building Area (total GSF)	225,761

Building Efficiency (total NASF/total GSF) 73.3 %

* Area Revision From-Original Program Statement, 23 September, 1993.
() Indicates Original Program Area

TREE LISTING BY NUMBER.

1. 12" OAK	21. 12" OAK	41. 2" ASH	61. 4" MAPLE
2. 24" OAK	22. 24" OAK	42. 2" ASH	62. 2" ASH
3. 12" OAK	23. 24" OAK	43. 12" OAK	63. 12" OAK
4. 2" MAPLE	24. 4" SPICE	44. 12" OAK	64. 4" MAPLE
5. 2" ASH	25. 12" OAK	45. 12" SPICE	65. 2" ASH
6. 2" MAPLE	26. 8" MAPLE	46. 4" ASH	66. 2" MAPLE
7. 12" OAK	27. 24" OAK	47. 12" SPICE	67. 2" ASH
8. 4" ASH	28. 4" SPICE	48. 12" OAK	68. 2" ASH
9. 4" ASH	29. 4" SPICE	49. 4" ASH	69. 4" ASH
10. 12" OAK	30. 4" OAK	50. 4" MAPLE	70. 4" ASH
11. 4" MAPLE	31. 12" OAK	51. 2" ASH	71. 12" OAK
12. 4" MAPLE	32. 4" MAPLE	52. 4" PINE	72. 4" MAPLE
13. 4" MAPLE	33. 14" OAK	53. 4" PINE	73. 4" MAPLE
14. 4" ASH	34. 12" OAK	54. 4" ASH	
15. 12" OAK	35. 12" OAK	55. 2" ASH	
16. 12" OAK	36. 4" ASH	56. 4" ASH	
17. 24" ARBORESCENS	37. 12" OAK	57. 4" ASH	
18. 14" OAK	38. 4" ASH	58. 4" ASH	
19. 4" MAPLE	39. 12" OAK	59. 4" MAPLE	
20. 12" OAK	40. 12" OAK	60. 4" MAPLE	



1513 West St. Germain
St. Cloud, MN 56301
(612) 253-9495
FAX: (612) 253-8737

I HEREBY CERTIFY THAT THIS PLAN, SURVEY, OR REPORT WAS PREPARED BY ME OR UNDER MY DIRECT SUPERVISION AND THAT I AM A FULLY LICENSED LAND SURVEYOR UNDER THE LAWS OF THE STATE OF MINNESOTA.

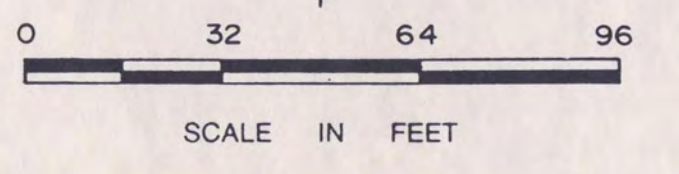
DATE FEB. 25, 1993 LICENSE NO. 10461
COPYRIGHT © 1994 PAUL E. WELLEN & ASSOCIATES, INC.

CERTIFICATE OF SURVEY FOR THE MINNESOTA STATE UNIVERSITY SYSTEM

NEW LIBRARY SITE
St. Cloud State University, St. Cloud, Minnesota

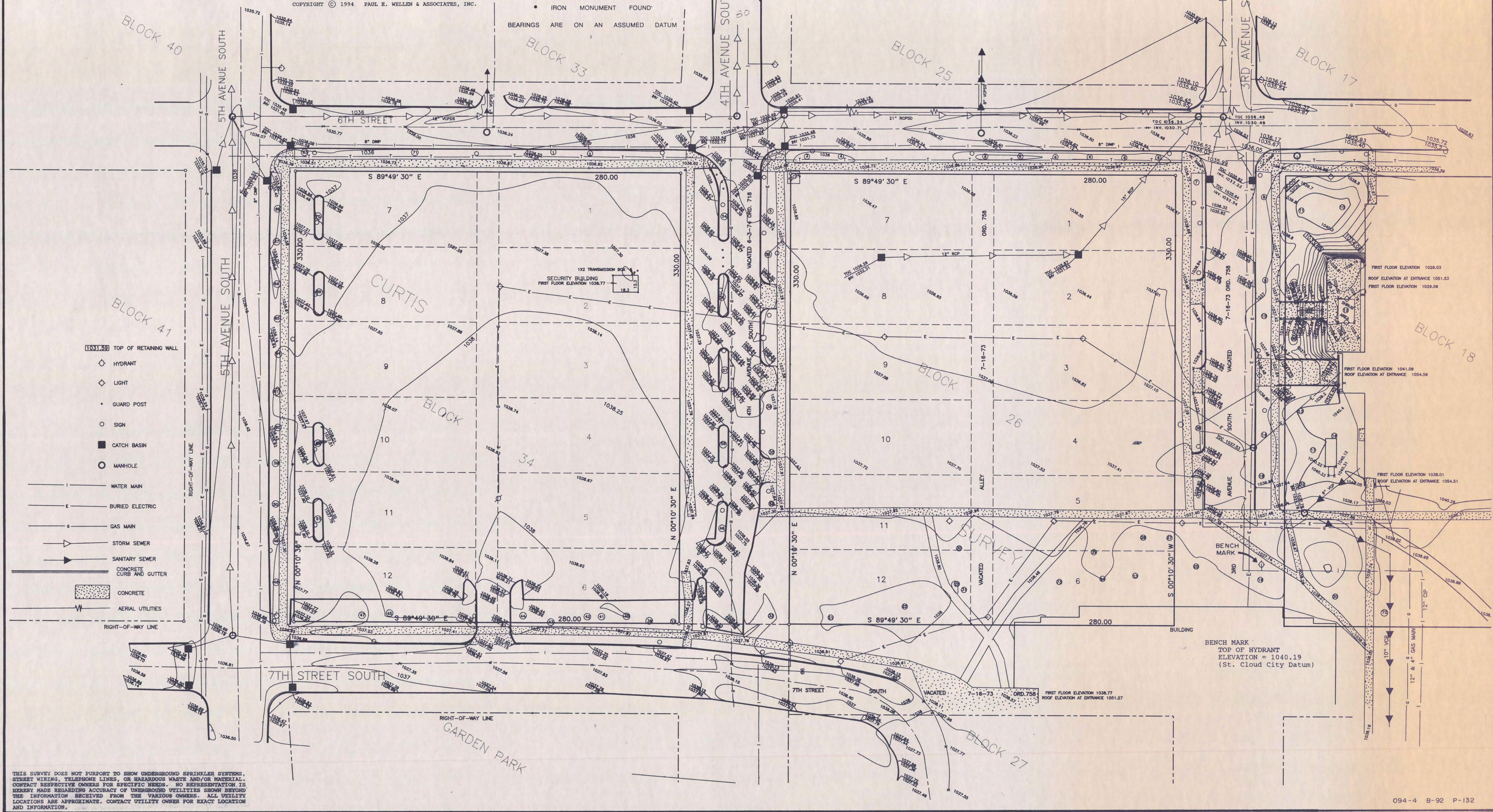
LAND DESCRIPTION

Block 26 & Block 34, CURTIS SURVEY, City of St. Cloud, Stearns County, Minnesota. According to the recorded plat thereof.
SUBJECT TO EASEMENTS OF RECORD IF ANY.



BEARINGS ARE ON AN ASSUMED DATUM

• IRON MONUMENT SET
• IRON MONUMENT FOUND



- 1031.50 TOP OF RETAINING WALL
- HYDRANT
- ◇ LIGHT
- GUARD POST
- SIGN
- CATCH BASIN
- MANHOLE
- WATER MAIN
- BURIED ELECTRIC
- GAS MAIN
- STORM SEWER
- SANITARY SEWER
- CONCRETE CURB AND GUTTER
- CONCRETE
- AERIAL UTILITIES
- RIGHT-OF-WAY LINE

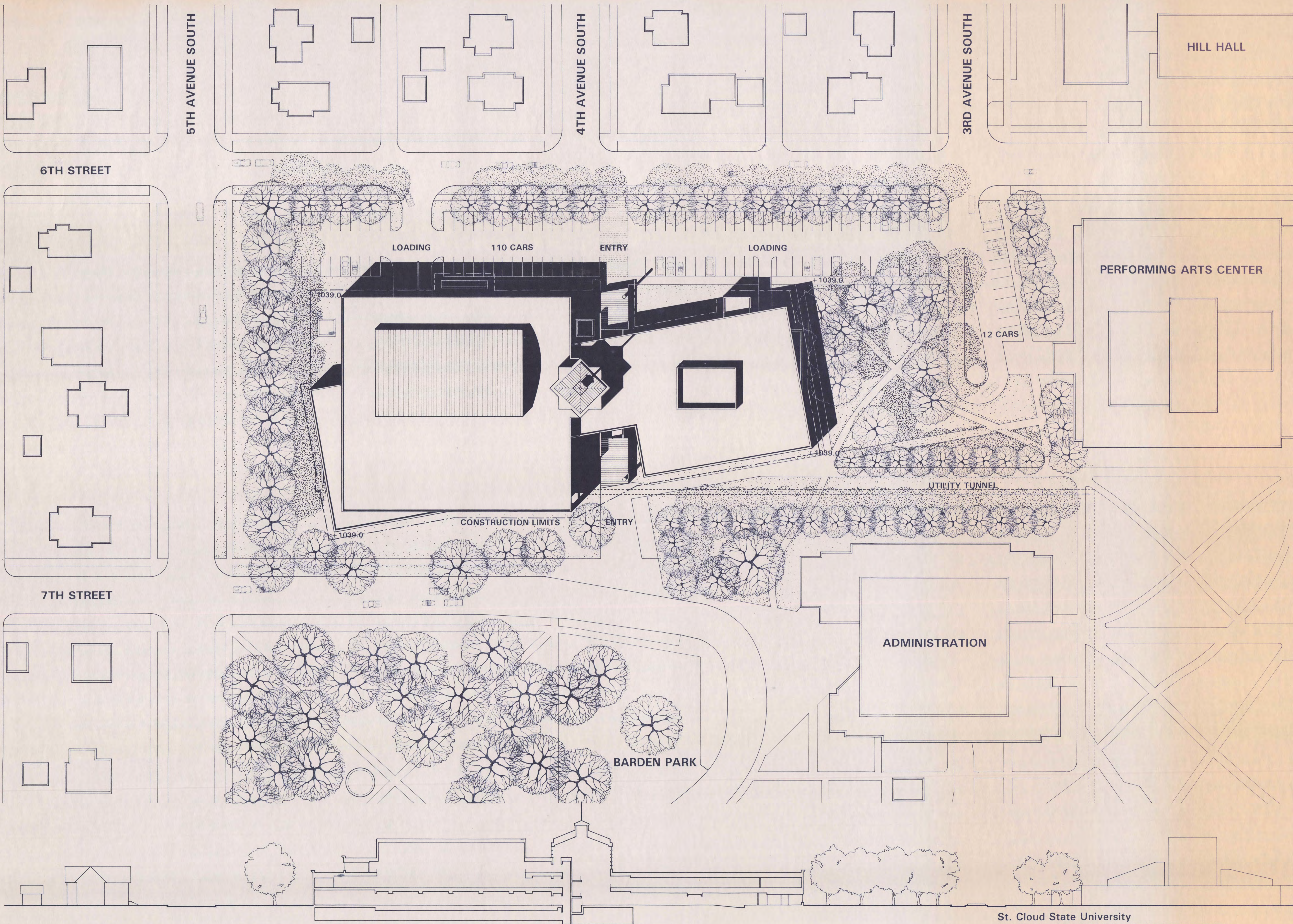
THIS SURVEY DOES NOT PURPORT TO SHOW UNDERGROUND SPRINKLER SYSTEMS, STREET WIRING, TELEPHONE LINES, OR HAZARDOUS WASTE AND/OR MATERIALS. CONTACT RESPECTIVE OWNERS FOR SPECIFIC NEEDS. NO REPRESENTATION IS HEREBY MADE REGARDING ACCURACY OF UNDERGROUND UTILITIES SHOWN BEYOND THE INFORMATION RECEIVED FROM THE VARIOUS OWNERS. ALL UTILITY LOCATIONS ARE APPROXIMATE. CONTACT UTILITY OWNER FOR EXACT LOCATION AND INFORMATION.

094-4 B-92 P-132

St. Cloud State University LEARNING RESOURCES SERVICES CENTER SITE SURVEY

FINAL SCHEMATIC DESIGN
THE LEONARD PARKER ASSOCIATES
SETTER LEACH & LINDSTROM

13 APRIL 1994
ARCHITECTS
ASSOC. ARCHITECTS & ENGINEERS



6TH STREET

7TH STREET

5TH AVENUE SOUTH

4TH AVENUE SOUTH

3RD AVENUE SOUTH

HILL HALL

PERFORMING ARTS CENTER

LOADING

110 CARS

ENTRY

LOADING

12 CARS

UTILITY TUNNEL

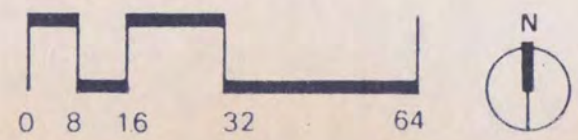
CONSTRUCTION LIMITS

ENTRY

ADMINISTRATION

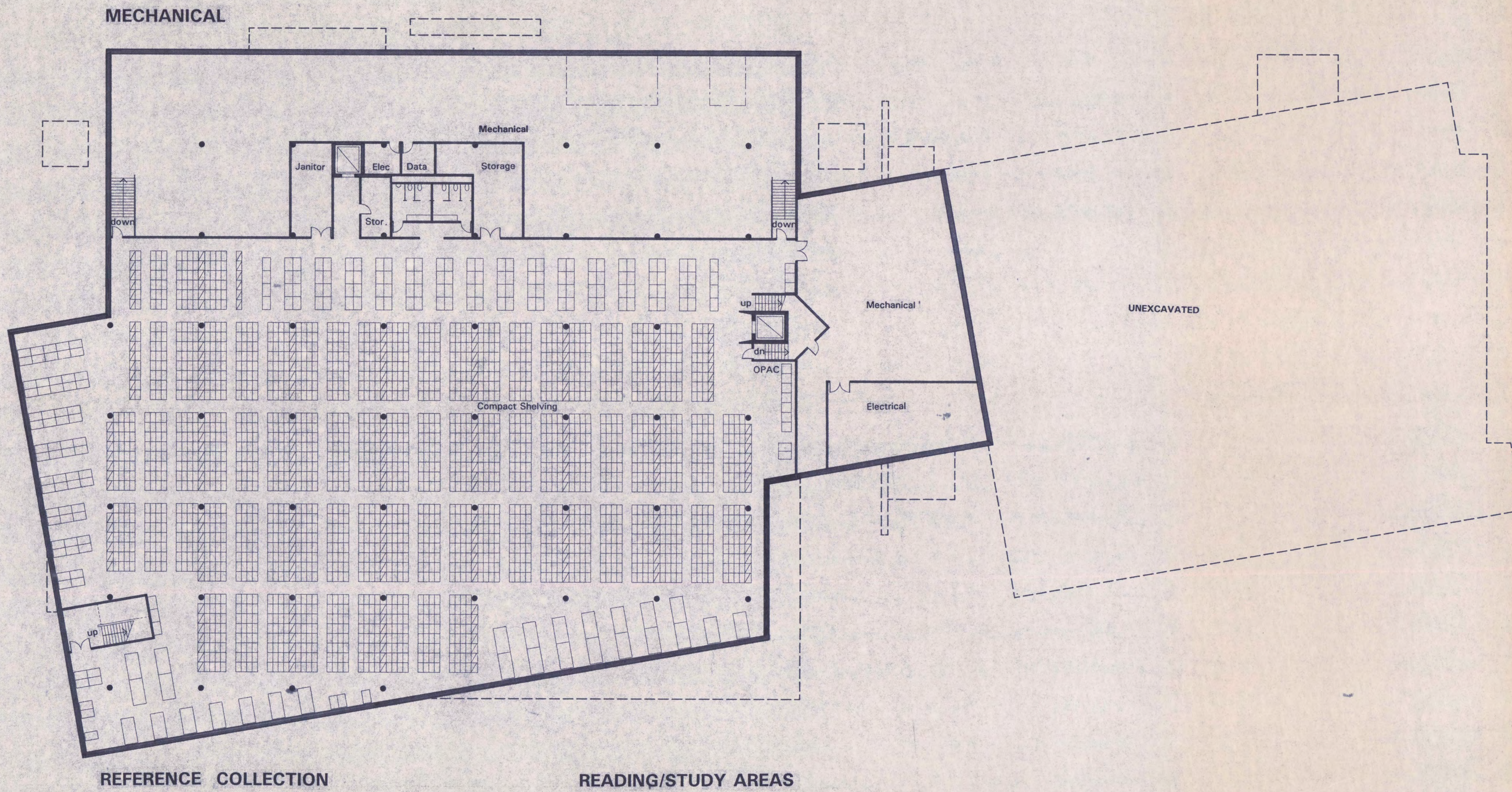
BARDEN PARK

St. Cloud State University
 LEARNING RESOURCES SERVICES CENTER
 SITE PLAN/SITE SECTION



FINAL SCHEMATIC DESIGN
 THE LEONARD PARKER ASSOCIATES
 SETTER LEACH & LINDSTROM

13 APRIL 1994
 ARCHITECTS
 ASSOC. ARCHITECTS & ENGINEERS



REFERENCE COLLECTION

READING/STUDY AREAS

UNEXCAVATED

Mechanical

Electrical

Mechanical

Janitor

Elec

Data

Storage

Stor.

OPAC

Compact Shelving

MECHANICAL

REFERENCE COLLECTION

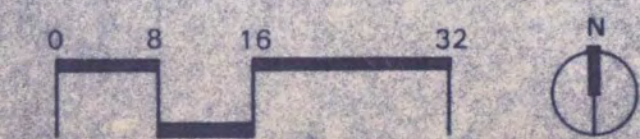
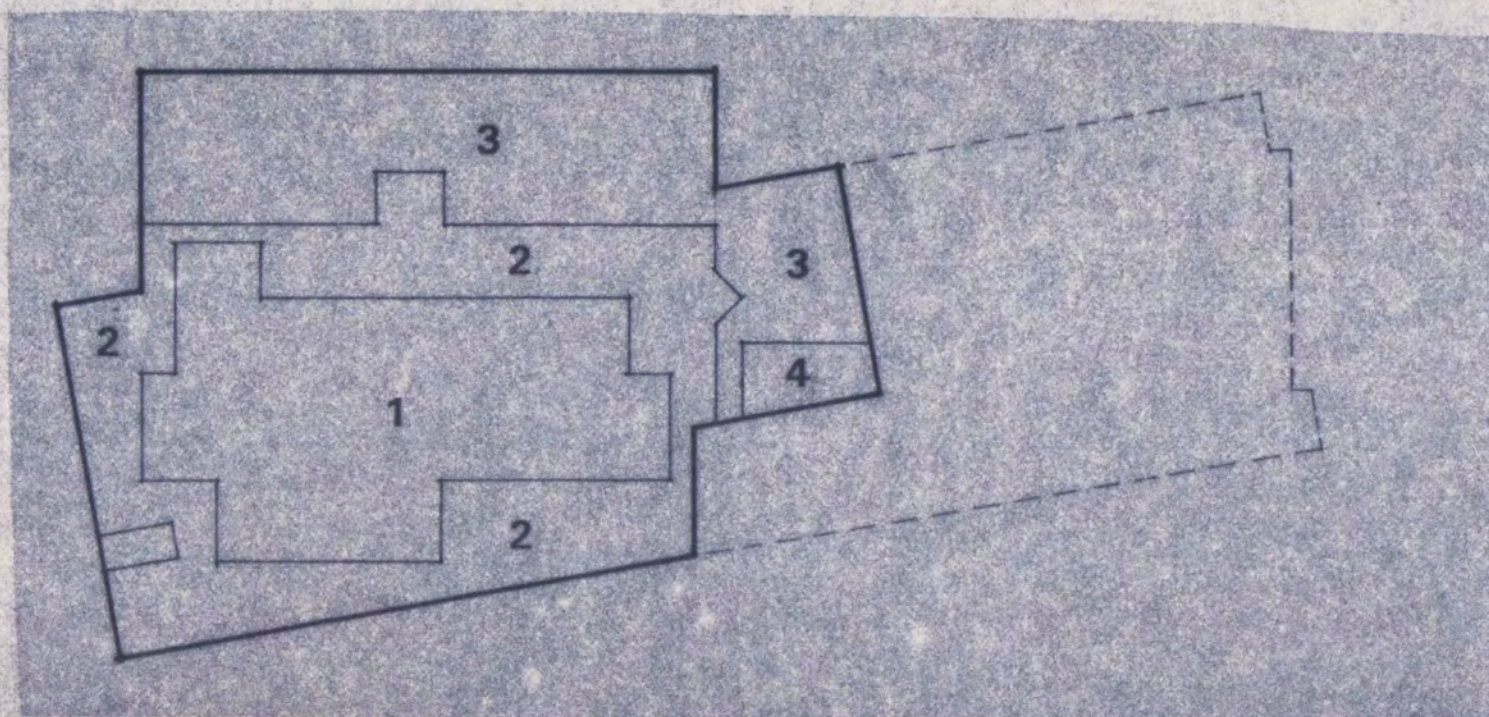
READING/STUDY AREAS

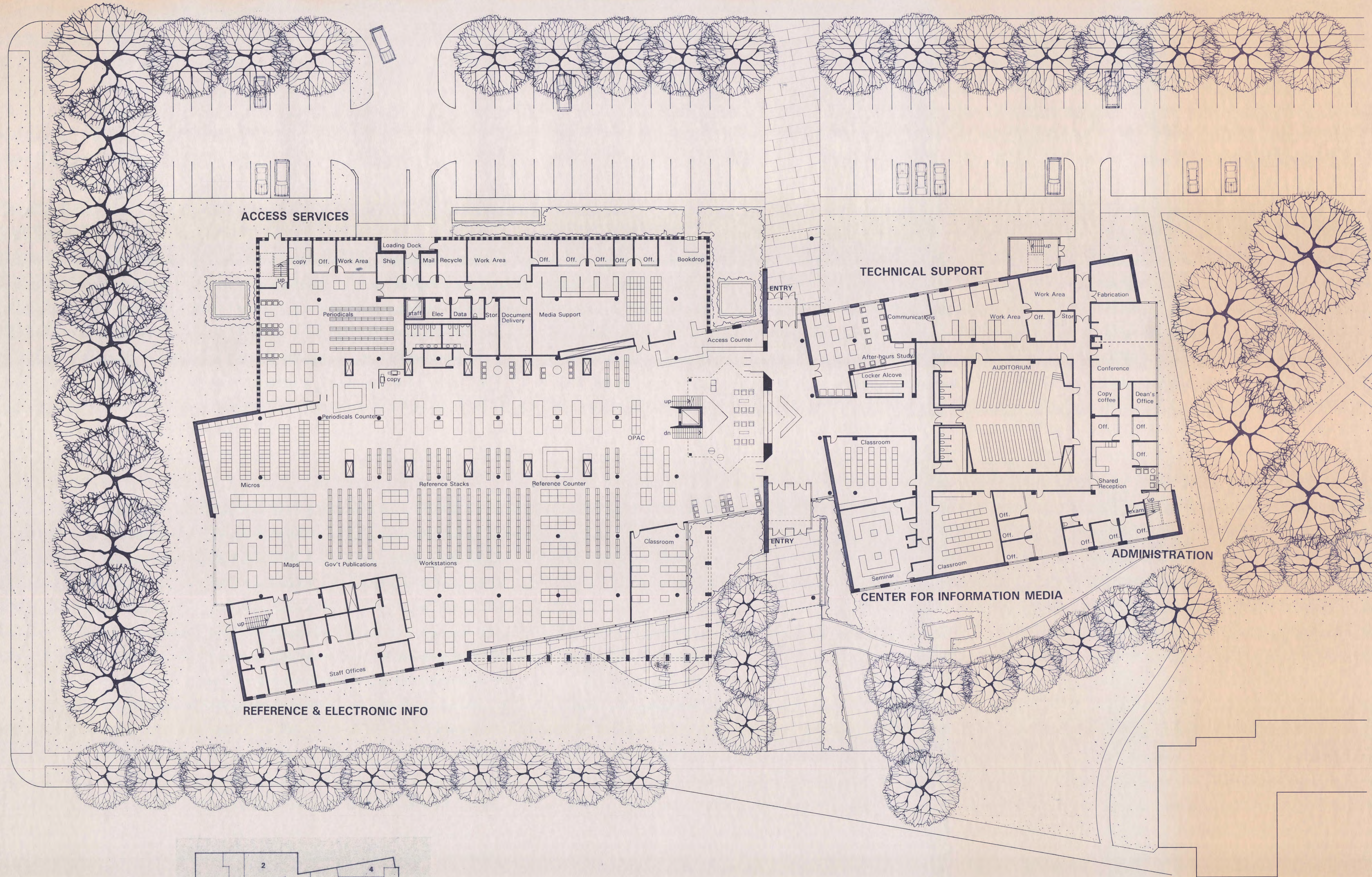
St. Cloud State University
 LEARNING RESOURCES SERVICES CENTER
BASEMENT

FINAL SCHEMATIC DESIGN
 THE LEONARD PARKER ASSOCIATES
 SETTER LEACH & LINDSTROM

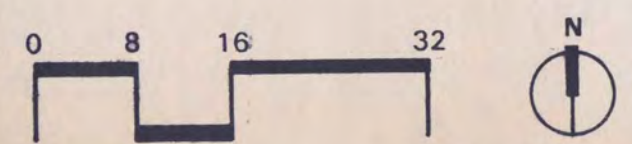
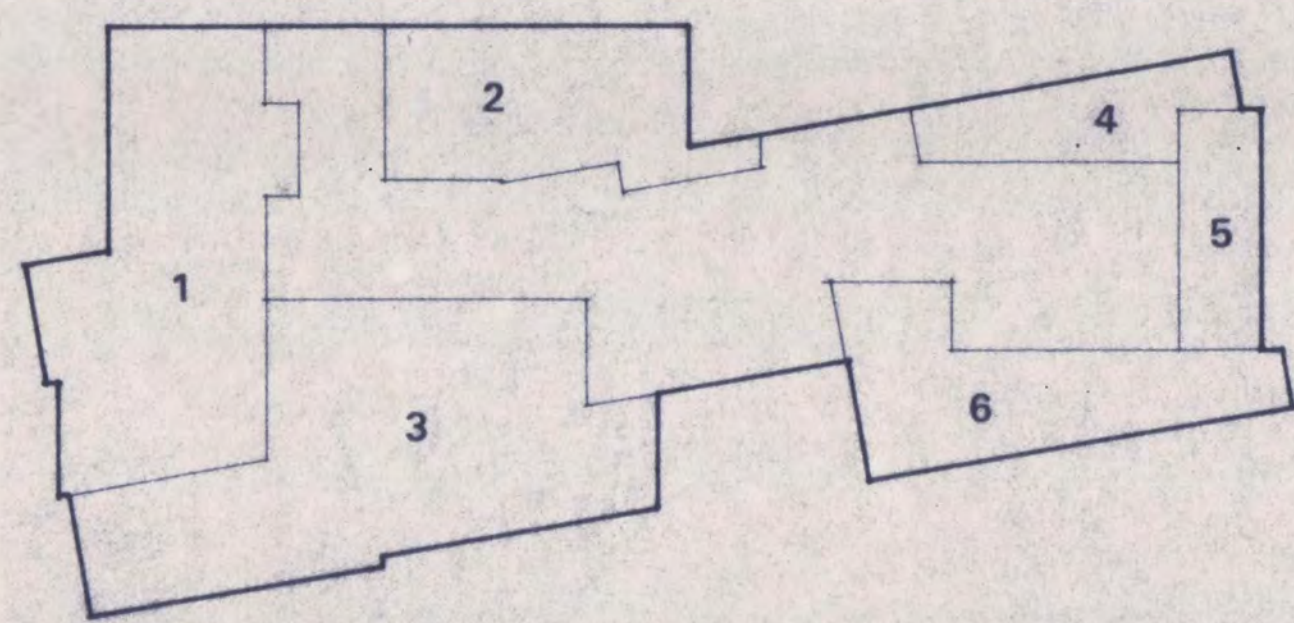
13 APRIL 1994
 ARCHITECTS
 ASSOC. ARCHITECTS & ENGINEERS

- 1 REFERENCE COLLECTION
- 2 READING/STUDY AREAS
- 3 MECHANICAL
- 4 ELECTRICAL





- 1 PERIODICALS MAPS & GOVT PUBLICATIONS
- 2 ACCESS SERVICES
- 3 REFERENCE & ELECTRONIC INFORMATION
- 4 TECHNICAL SERVICES
- 5 ADMINISTRATION
- 6 CENTER FOR INFORMATION MEDIA



St. Cloud State University
 LEARNING RESOURCES SERVICES CENTER
FIRST FLOOR

FINAL SCHEMATIC DESIGN
 THE LEONARD PARKER ASSOCIATES
 SETTER LEACH & LINDSTROM

13 APRIL 1994
 ARCHITECTS
 ASSOC. ARCHITECTS & ENGINEERS