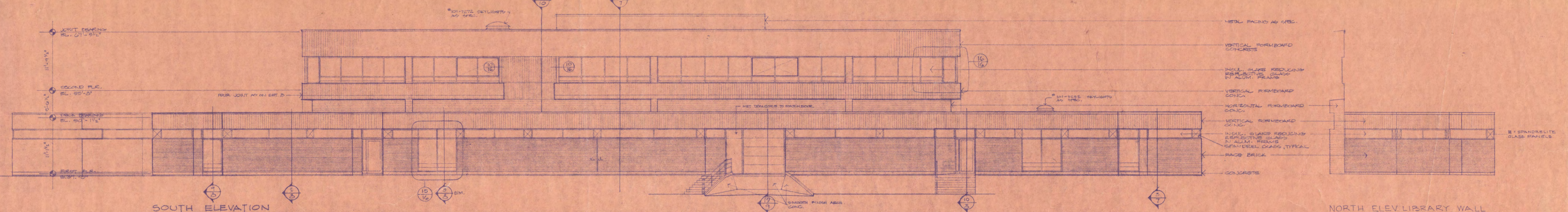
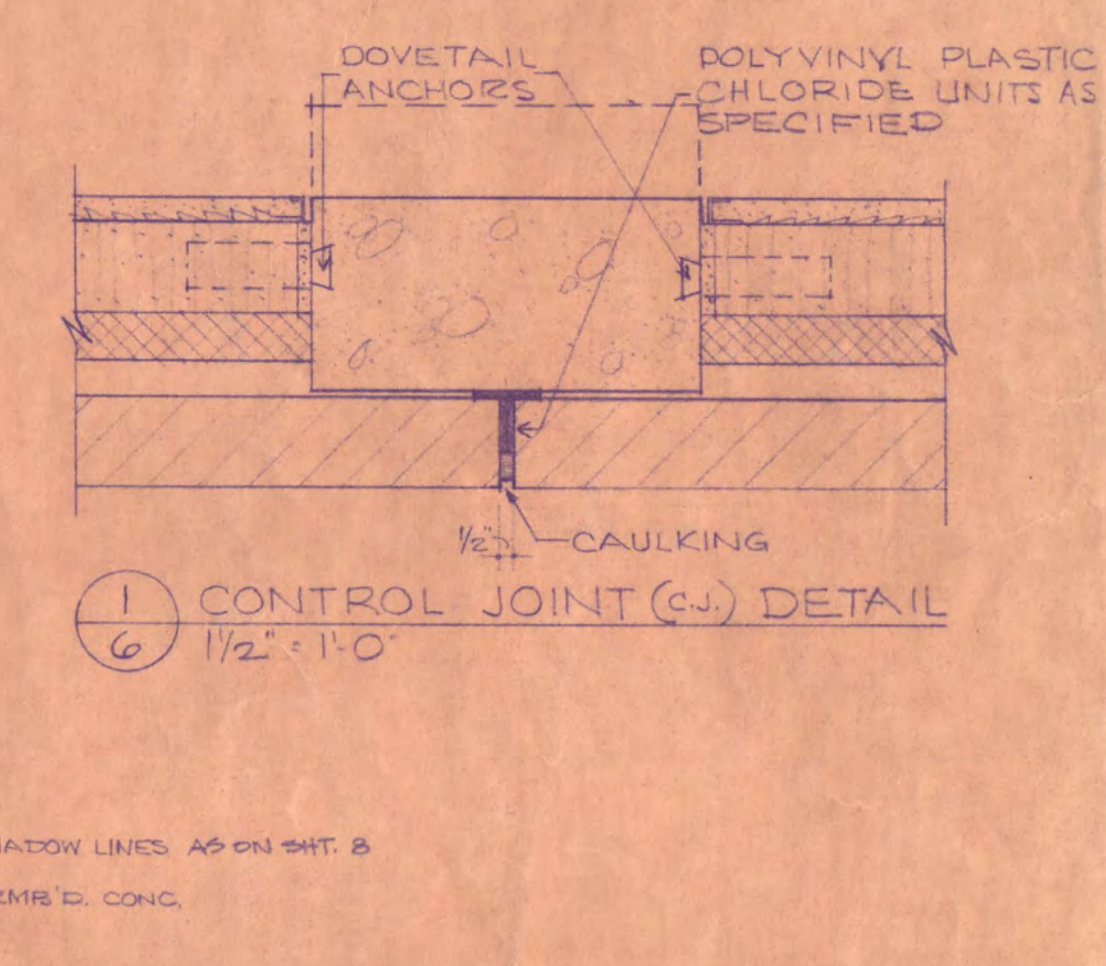
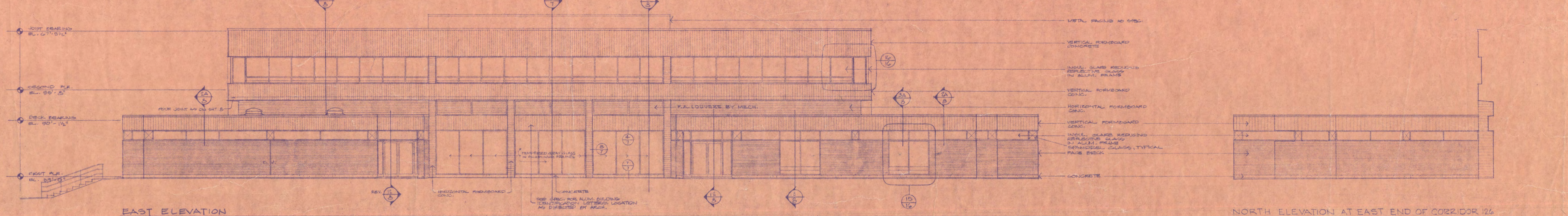


WEST ELEVATION  
1/8" = 1'-0"



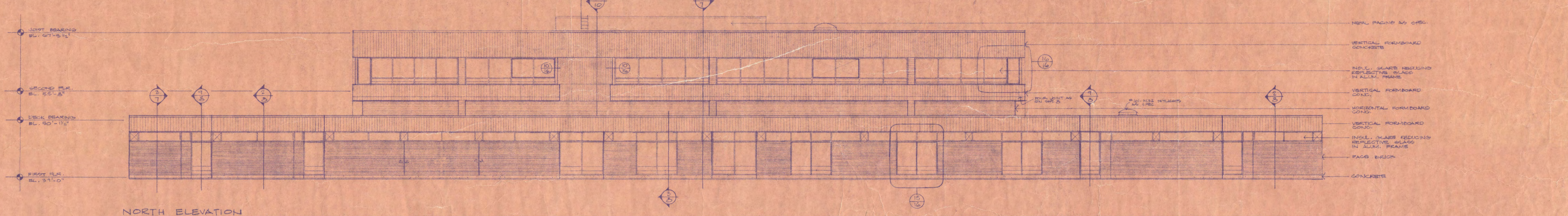
SOUTH ELEVATION  
1/8" = 1'-0"

NORTH ELEV LIBRARY WALL  
1/8" = 1'-0"

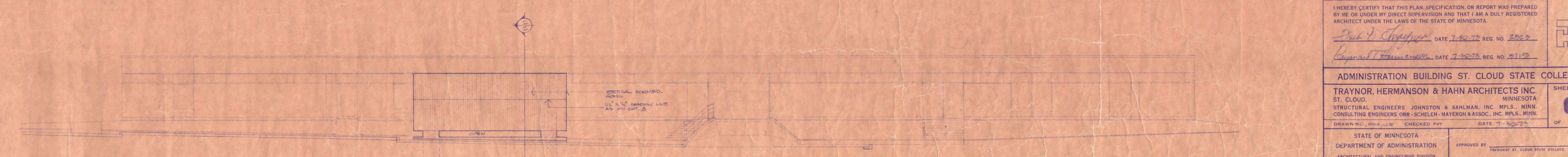


EAST ELEVATION  
1/8" = 1'-0"

NORTH ELEVATION AT EAST END OF CORRIDOR 126  
1/8" = 1'-0"



NORTH ELEVATION  
1/8" = 1'-0"



SOUTH ELEVATION OF COOLING TOWER ENCLOSURE  
1/8" = 1'-0"

I HEREBY CERTIFY THAT THIS PLAN, SPECIFICATION, OR REPORT WAS PREPARED BY ME OR UNDER MY DIRECT SUPERVISION AND THAT I AM A DULY REGISTERED ARCHITECT UNDER THE LAWS OF THE STATE OF MINNESOTA.

*Paul J. Chapman* DATE 7-20-73 REG. NO. 2062  
*Raymond J. Hanson* DATE 7-20-73 REG. NO. 2113

ADMINISTRATION BUILDING ST. CLOUD STATE COLLEGE

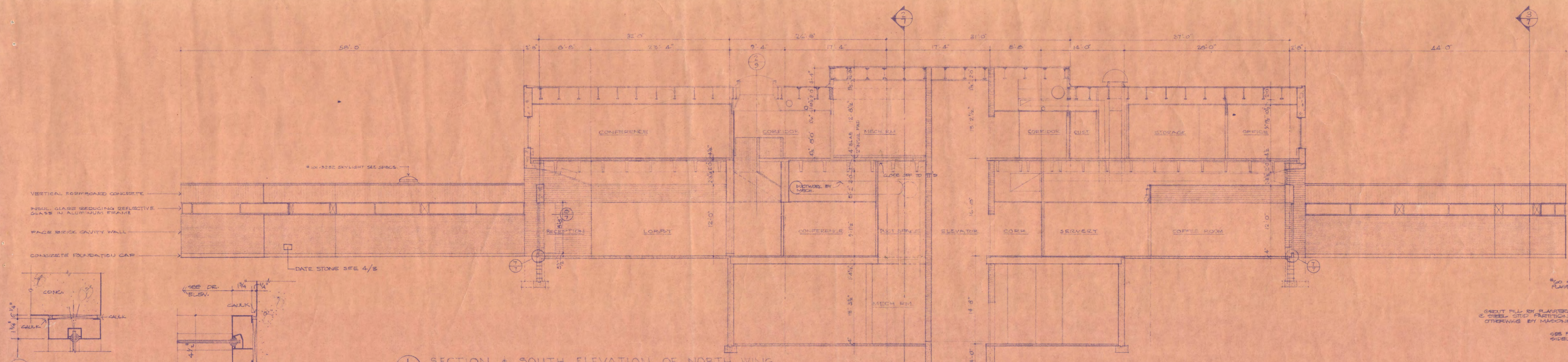
TRAYNOR, HERMANSON & HAHN ARCHITECTS INC.  
 ST. CLOUD, MINNESOTA  
 STRUCTURAL ENGINEERS JOHNSTON & SAHLMAN, INC. MPLS., MINN.  
 CONSULTING ENGINEERS ORR - SCHELEN - MAYERSON & ASSOC., INC. MPLS., MINN.

DRAWN BY: [ ] CHECKED BY: [ ] DATE: 7-20-73

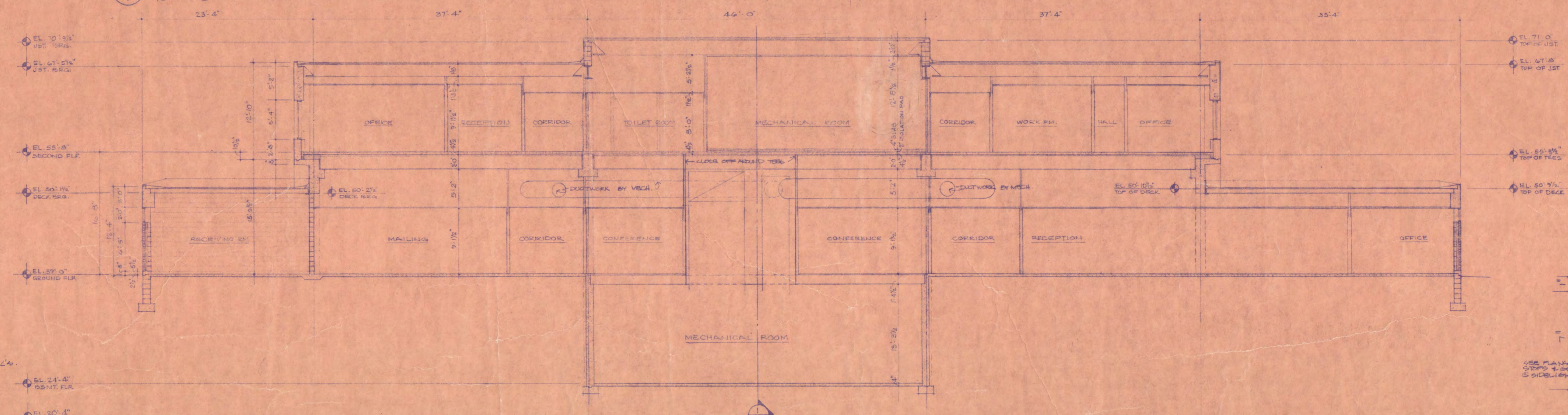
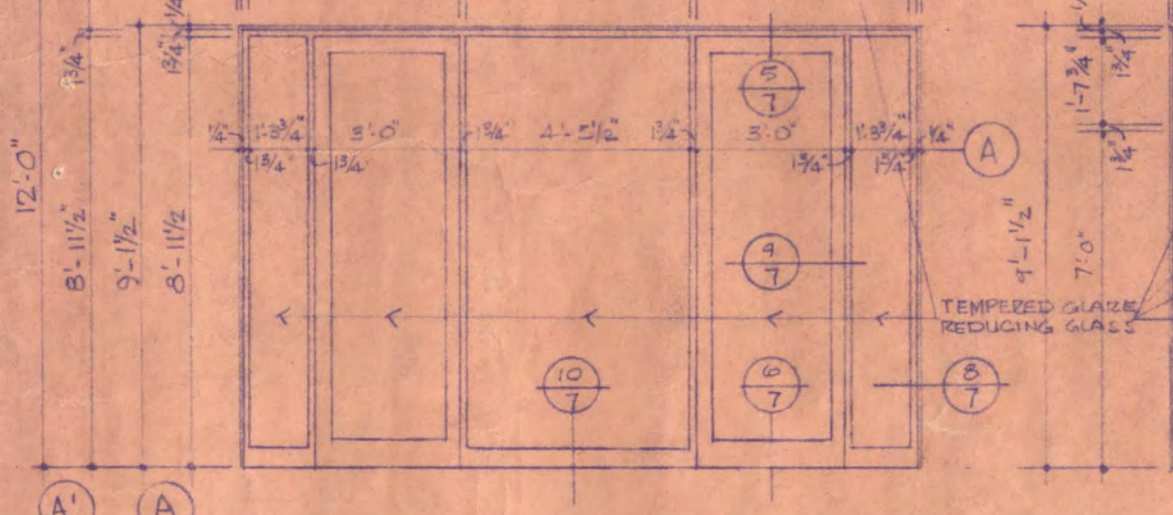
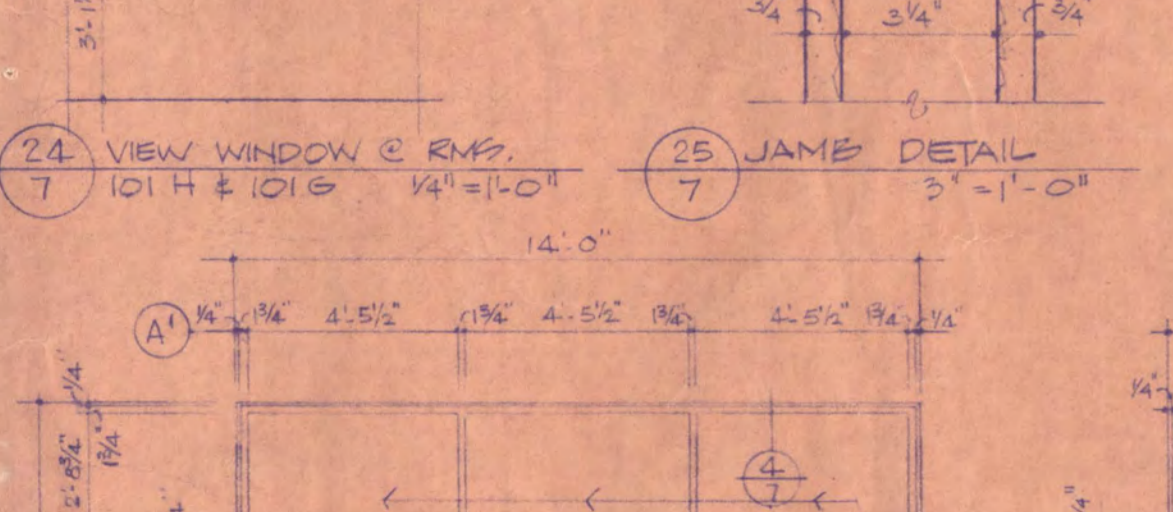
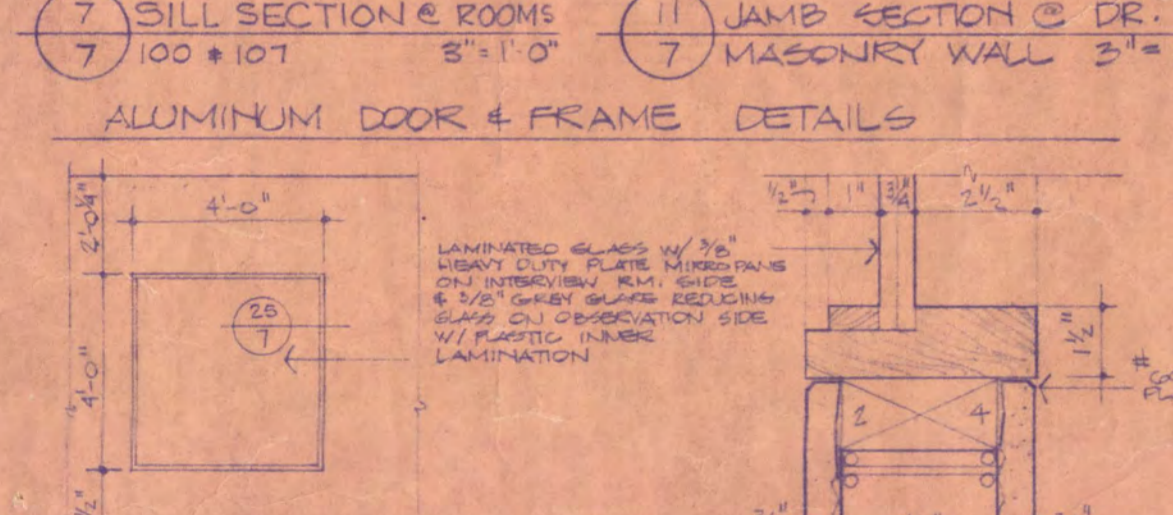
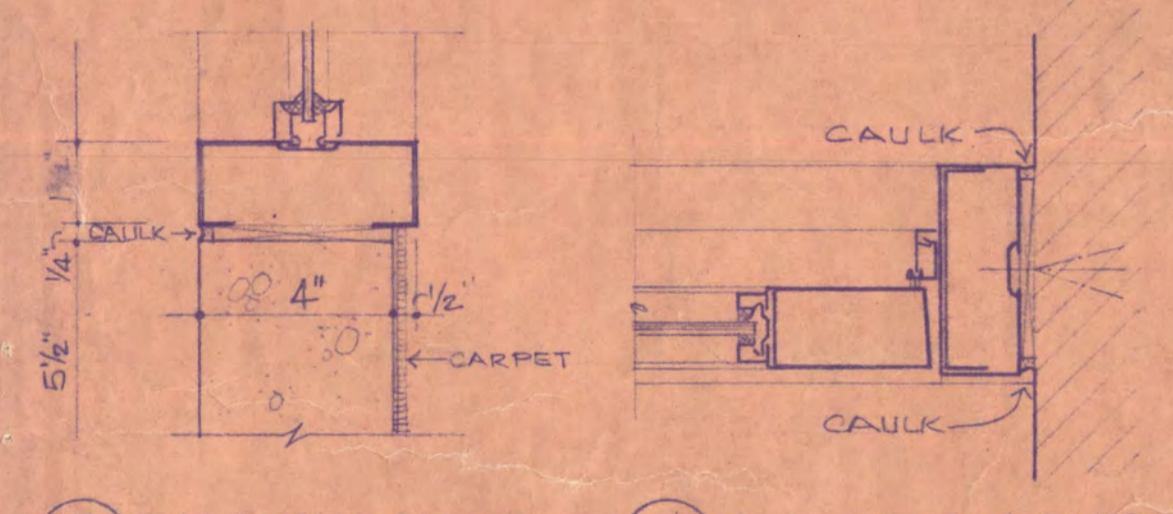
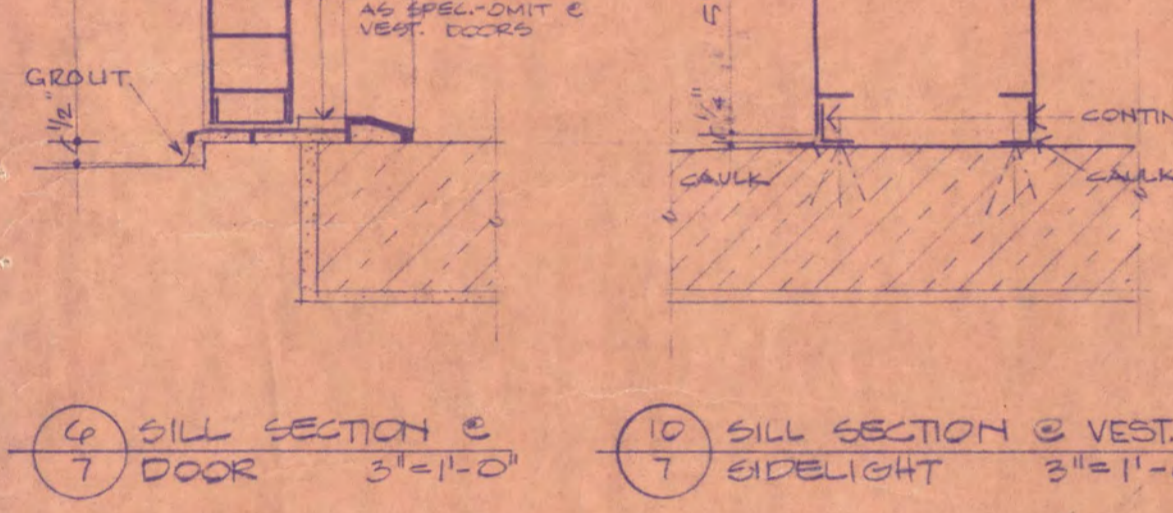
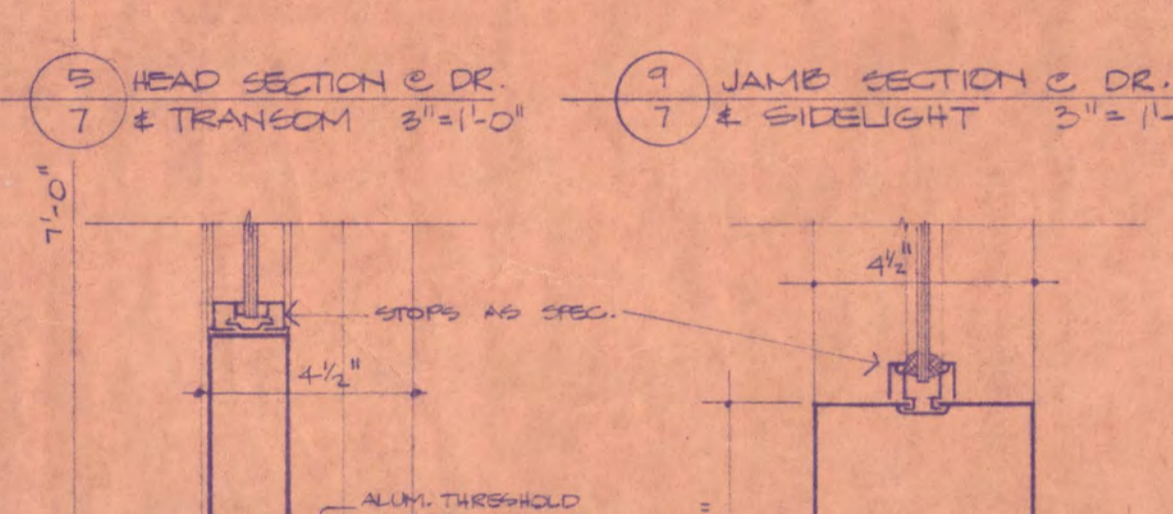
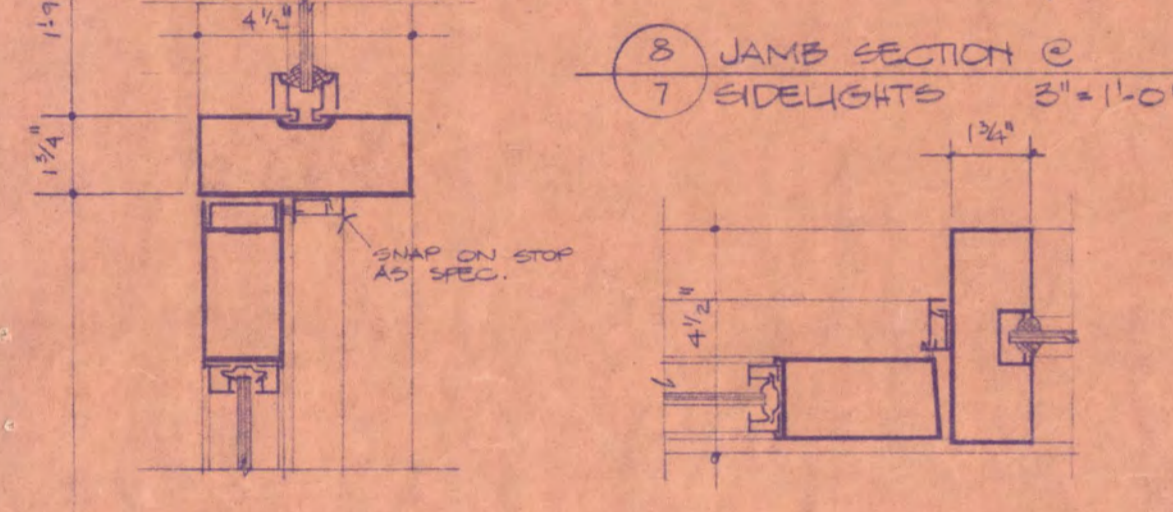
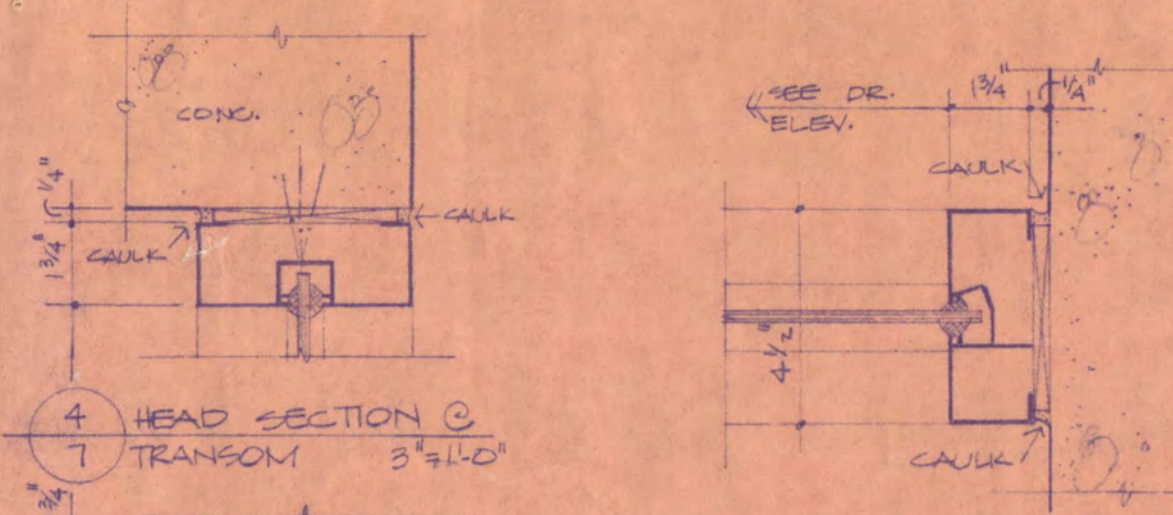
STATE OF MINNESOTA  
 DEPARTMENT OF ADMINISTRATION  
 ARCHITECTURAL AND ENGINEERING DIVISION  
 ROOM 5-10 ADMINISTRATION BUILDING  
 ST. PAUL 55155

APPROVED BY: [ ] PRESIDENT ST. CLOUD STATE COLLEGE  
 APPROVED BY: [ ] STATE COLLEGE BOARD  
 APPROVED BY: [ ] SUPERVISOR OF ADMINISTRATION AN AUTHORIZED SIGNATURE

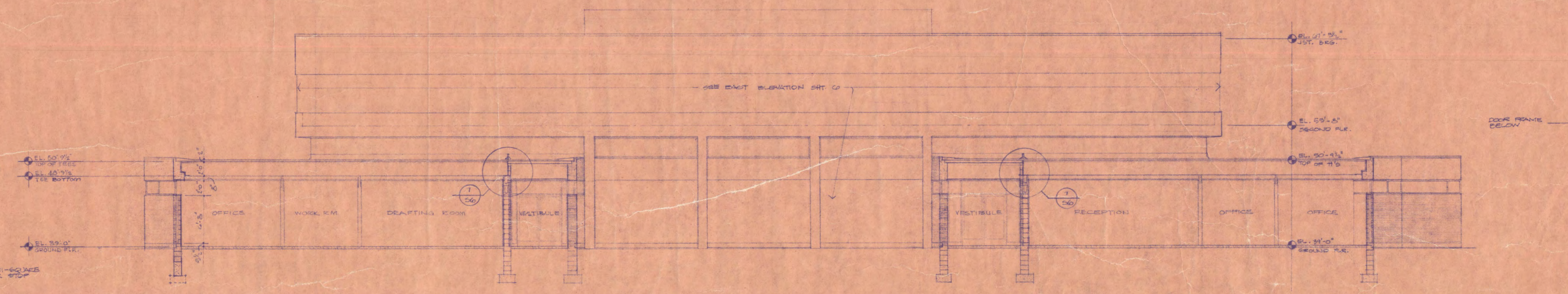
STATE PROJECT NO. 6360174



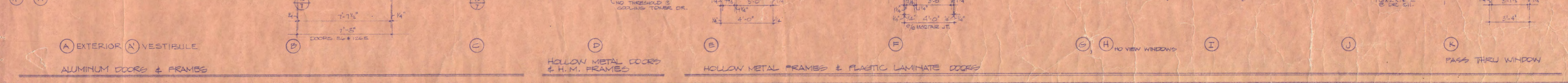
1 SECTION + SOUTH ELEVATION OF NORTH WING  
1/8" = 1'-0"



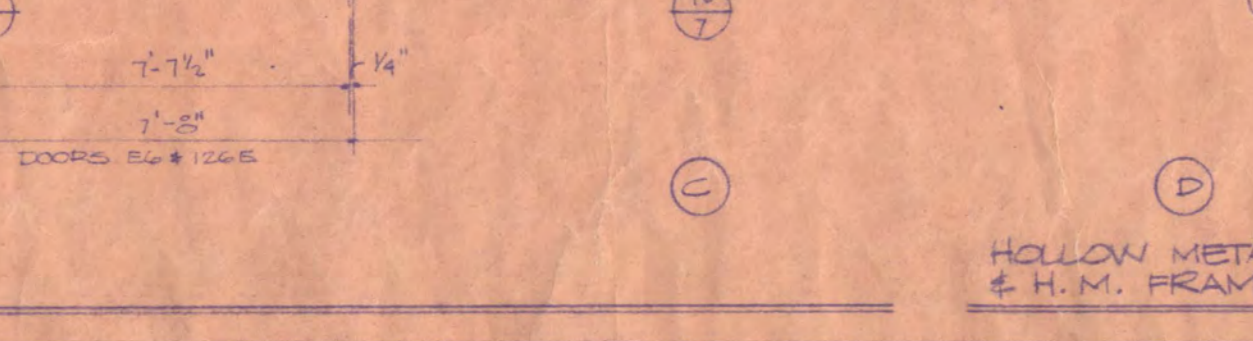
2 SECTION  
1/8" = 1'-0"



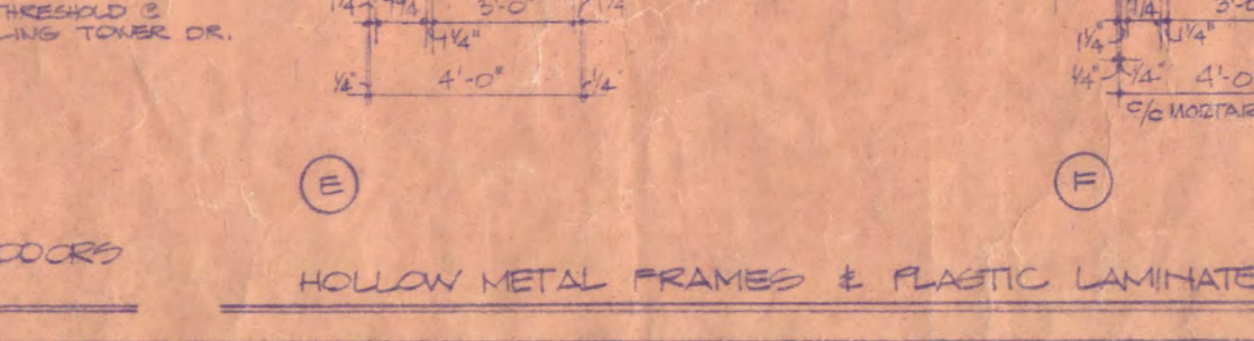
3 SECTION  
1/8" = 1'-0"



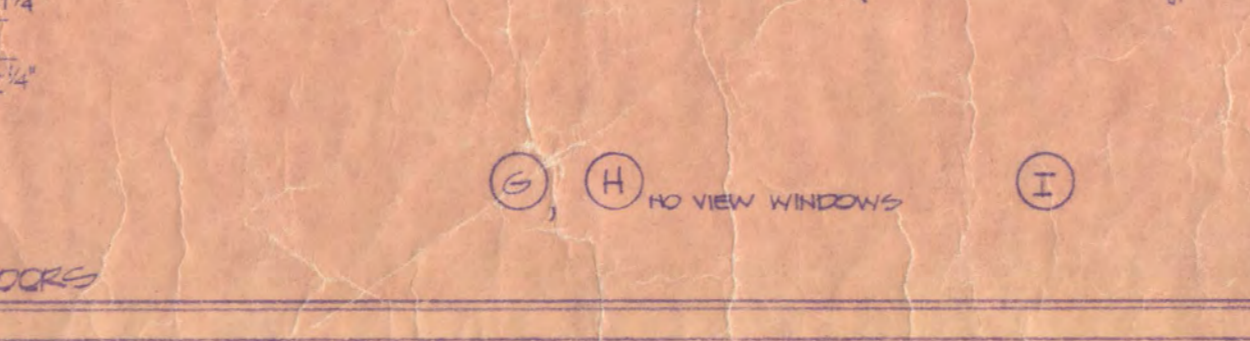
26 EXTERIOR, VESTIBULE



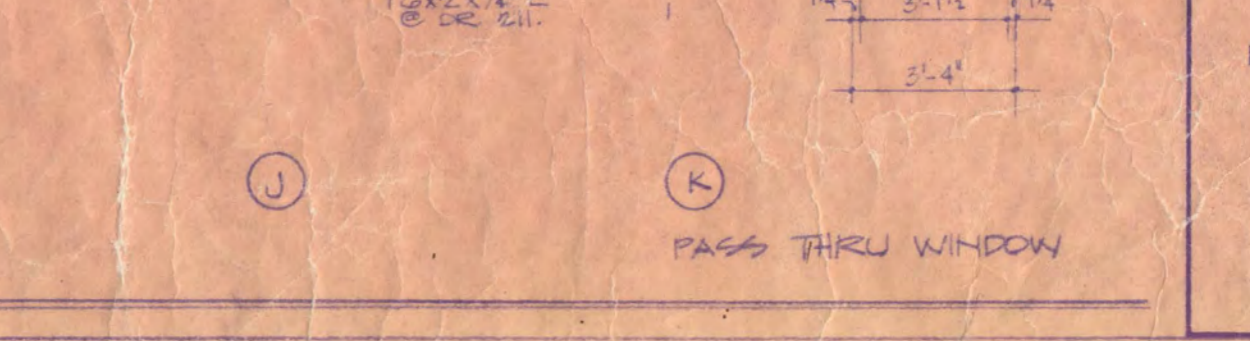
27 HOLLOW METAL DOORS & H.M. FRAMES



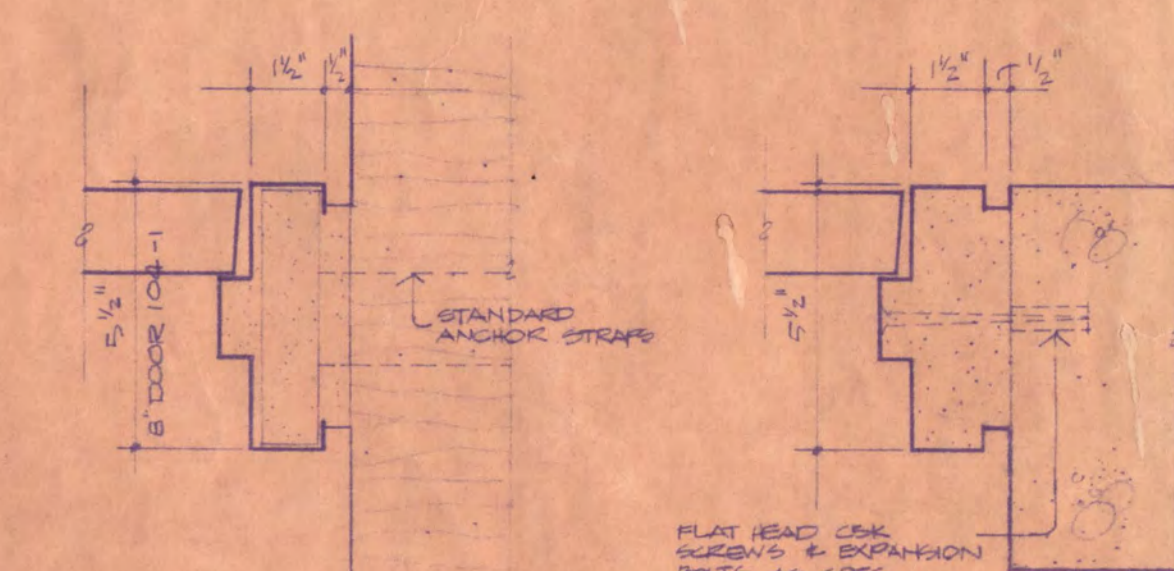
28 HOLLOW METAL FRAMES & PLASTIC LAMINATE DOORS



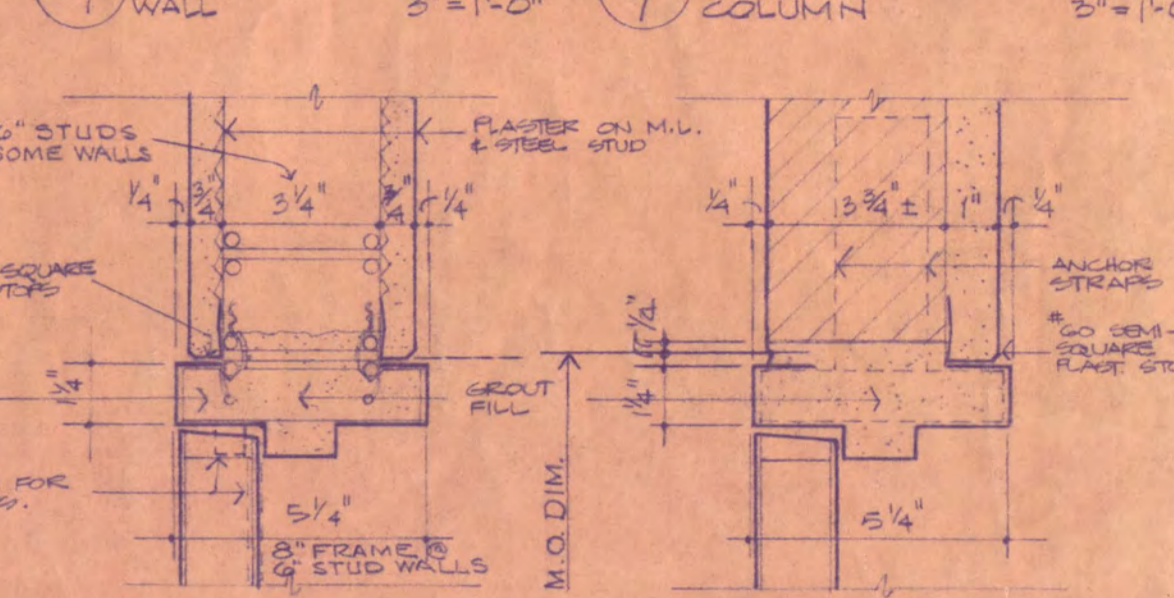
29 NO VIEW WINDOWS



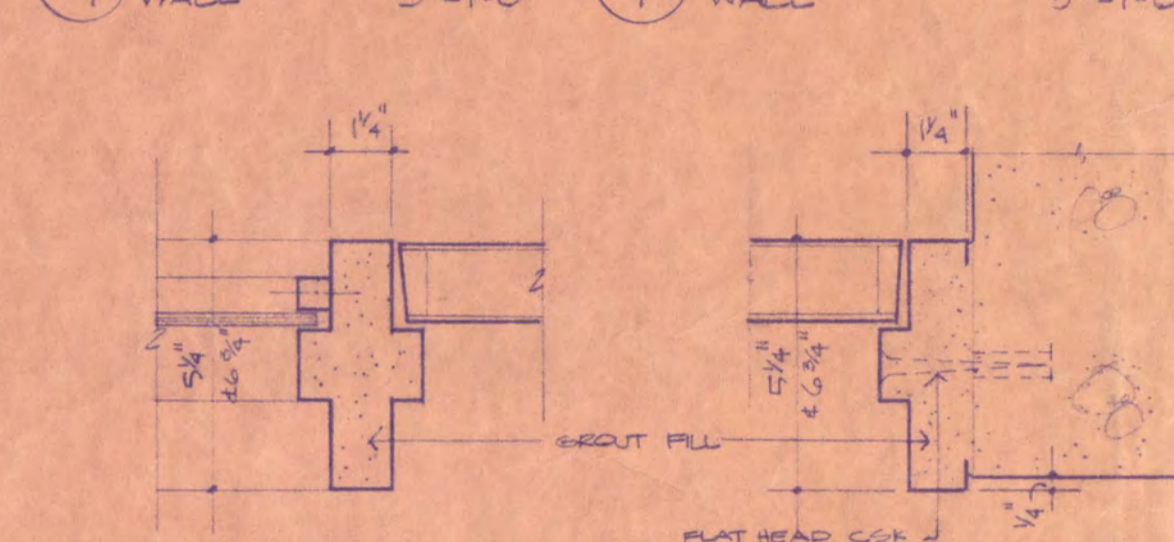
30 PASS THRU WINDOW



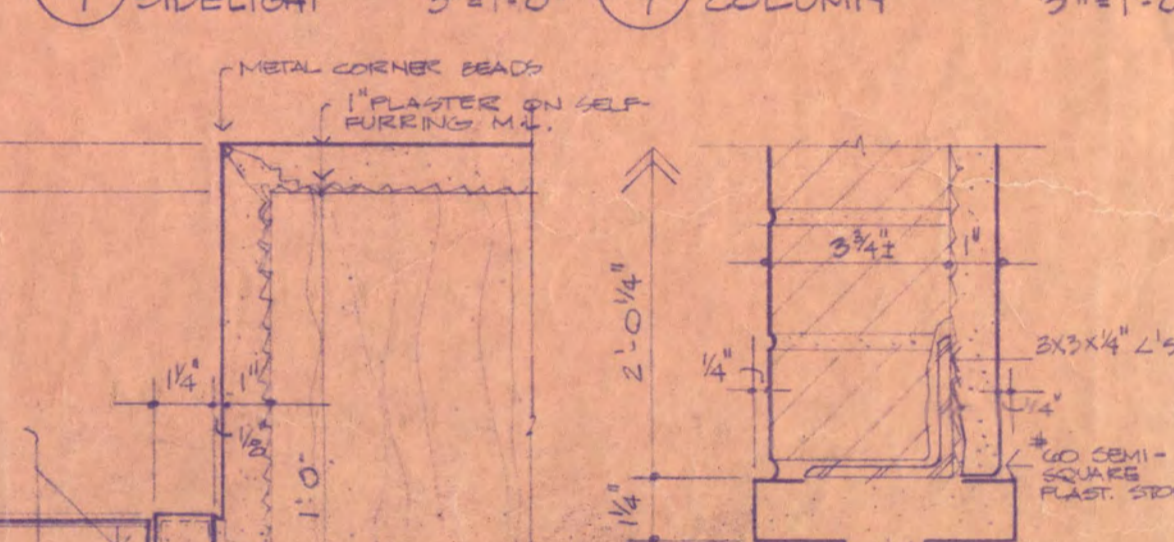
12 JAMB & MASONRY WALL 3'-11/2"



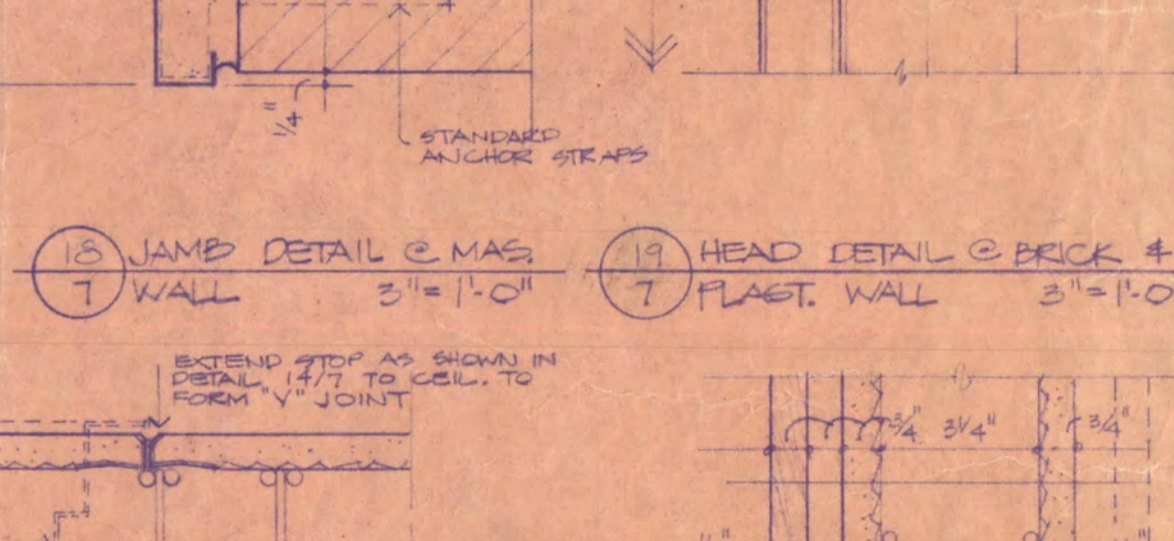
13 JAMB & CONC. WALL OR COLUMN 3'-11/2"



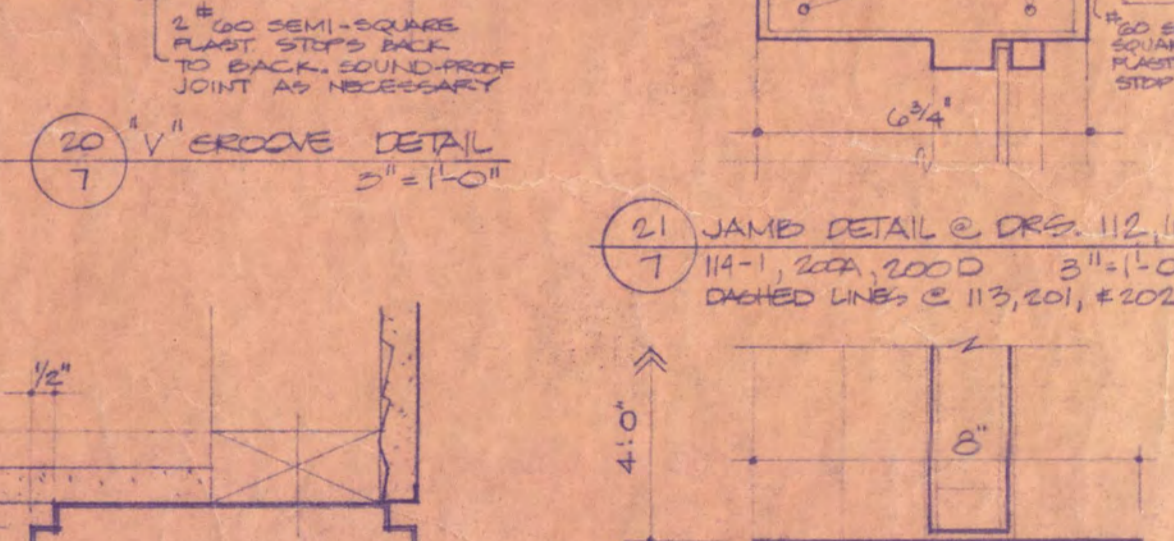
14 JAMB & STEEL STUD WALL 3'-11/2"



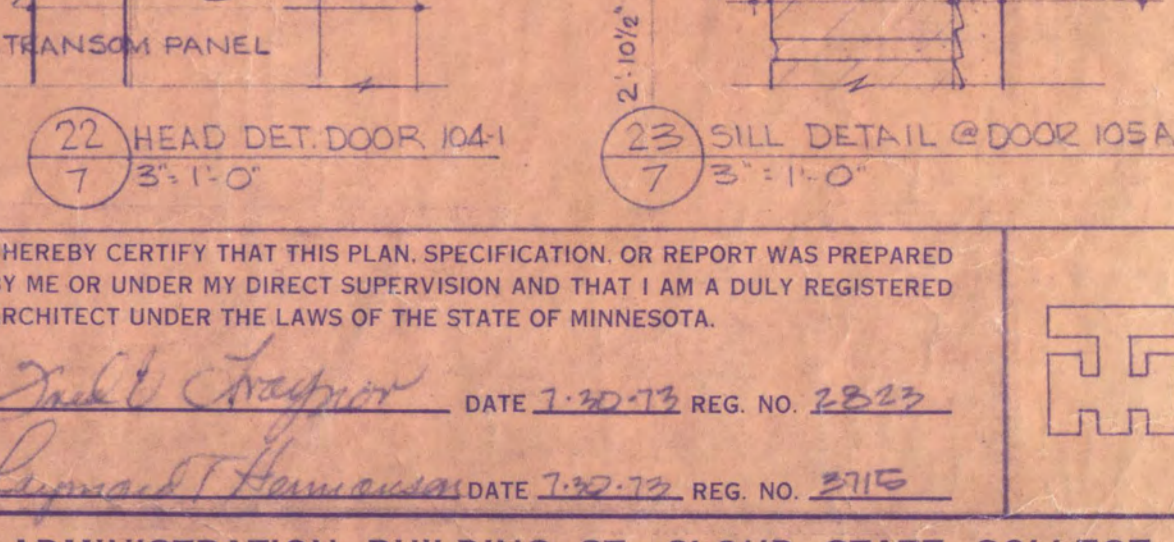
15 JAMB & BRICK & PLAST. WALL 3'-11/2"



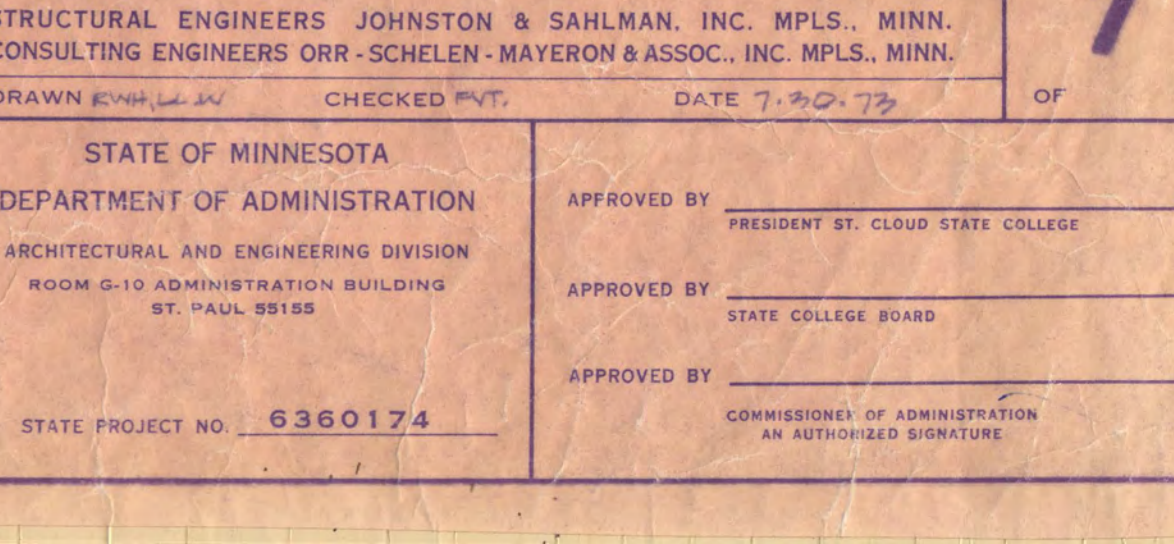
16 JAMB & DR. & SIDELIGHT 3'-11/2"



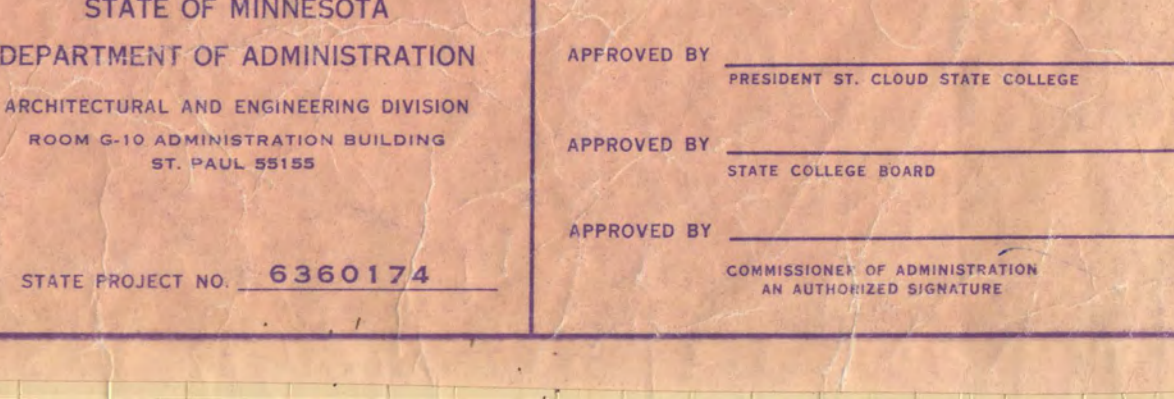
17 JAMB & DR. & CONC. COLUMN 3'-11/2"



18 JAMB DETAIL @ MAS. WALL 3'-11/2"



19 HEAD DETAIL @ BRICK & PLAST. WALL 3'-11/2"



20 V-SIDELIGHT DETAIL 3'-11/2"



21 JAMB DETAIL @ DR. & CONC. COLUMN 3'-11/2"



22 HEAD DET. DOOR 104 3'-11/2"



23 SILL DETAIL @ DOOR 105A 3'-11/2"

I HEREBY CERTIFY THAT THIS PLAN, SPECIFICATION OR REPORT WAS PREPARED BY ME OR UNDER MY DIRECT SUPERVISION AND THAT I AM A DULY REGISTERED ARCHITECT UNDER THE LAWS OF THE STATE OF MINNESOTA.

*Robert J. Hermanson* DATE 7-20-73 REG. NO. 2715

*Raymond J. Schelen* DATE 7-20-73 REG. NO. 2715

**ADMINISTRATION BUILDING ST. CLOUD STATE COLLEGE**

**TRAYNOR, HERMANSON & HAHN ARCHITECTS INC.**  
ST. CLOUD, MINNESOTA

STRUCTURAL ENGINEERS JOHNSTON & SAHLMAN, INC. MPLS. MINN.  
CONSULTING ENGINEERS ORR - SCHELEN - MAYERON & ASSOC., INC. MPLS. MINN.

DRAWN BY: [ ] CHECKED BY: [ ] DATE 7-20-73 OF 16

STATE OF MINNESOTA  
DEPARTMENT OF ADMINISTRATION  
ARCHITECTURAL AND ENGINEERING DIVISION  
ROOM 510 ADMINISTRATION BUILDING  
ST. PAUL 55155

APPROVED BY: PRESIDENT ST. CLOUD STATE COLLEGE  
APPROVED BY: STATE COLLEGE BOARD  
APPROVED BY: COMMISSIONER OF ADMINISTRATION  
AN AUTHORIZED SIGNATURE

STATE PROJECT NO. 5360174

SHEET NO. **7**

2A CLERESTORY WDO @ WALL PARALLEL TO JOIST

3A WINDOW AT WALL PARALLEL TO JOIST

1 MECH. RM EAST & WEST WALL SECT.

13 2ND FLOOR CEIL @ EXT WALL AROUND PERIMETER 1/2" = 1'-0"

2 ONE STORY WALL SECT. 1/2" = 1'-0"

3 SECT. THRU WINDOW 1/2" = 1'-0"

4 TWO STORY WALL SECT. 1/2" = 1'-0"

5 TWO STORY WALL SECTION 1/2" = 1'-0"

6 SECTION THRU WEST ENTRY + VESTIBULE 1/2" = 1'-0"

7 CORR. WALL SECT. 1/2" = 1'-0"

8 SECT THRU EAST WALL @ COFFEE RM. WEST WALL @ RECEPTION SIM. 1/2" = 1'-0"

9 SECTION THRU WINDOW 1/2" = 1'-0"

10 SECTION THRU DOOR E-5 DOOR E4 SIM. 1/2" = 1'-0"

11 WALL SECTION @ LIBRARY WDO. 1/2" = 1'-0"

12 SECTION THRU ENTRIES + VESTIBULES 1/2" = 1'-0"

15 CLERESTORY WDO @ DOOR E4 & E5 3'-10"

16 CLERESTORY WDO @ ENTRANCES 3'-10"

17 WALL CLOSURE @ VEST DOORS 3'-10"

18 CLERESTORY WDO @ DOOR 104-1 3'-10"

I HEREBY CERTIFY THAT THIS PLAN, SPECIFICATION, OR REPORT WAS PREPARED BY ME OR UNDER MY DIRECT SUPERVISION AND THAT I AM A DULY REGISTERED ARCHITECT UNDER THE LAWS OF THE STATE OF MINNESOTA.

*Paul J. Traynor* DATE 7-20-73 REG. NO. 2233  
*Richard T. Hermanson* DATE 7-20-73 REG. NO. 3115

**ADMINISTRATION BUILDING ST. CLOUD STATE COLLEGE**

**TRAYNOR, HERMANSON & HAHN ARCHITECTS INC.**  
 ST. CLOUD, MINNESOTA  
 STRUCTURAL ENGINEERS JOHNSTON & SAHLMAN, INC. MPLS., MINN.  
 CONSULTING ENGINEERS ORL - SCHELEN - MAYERSON & ASSOC., INC. MPLS., MINN.

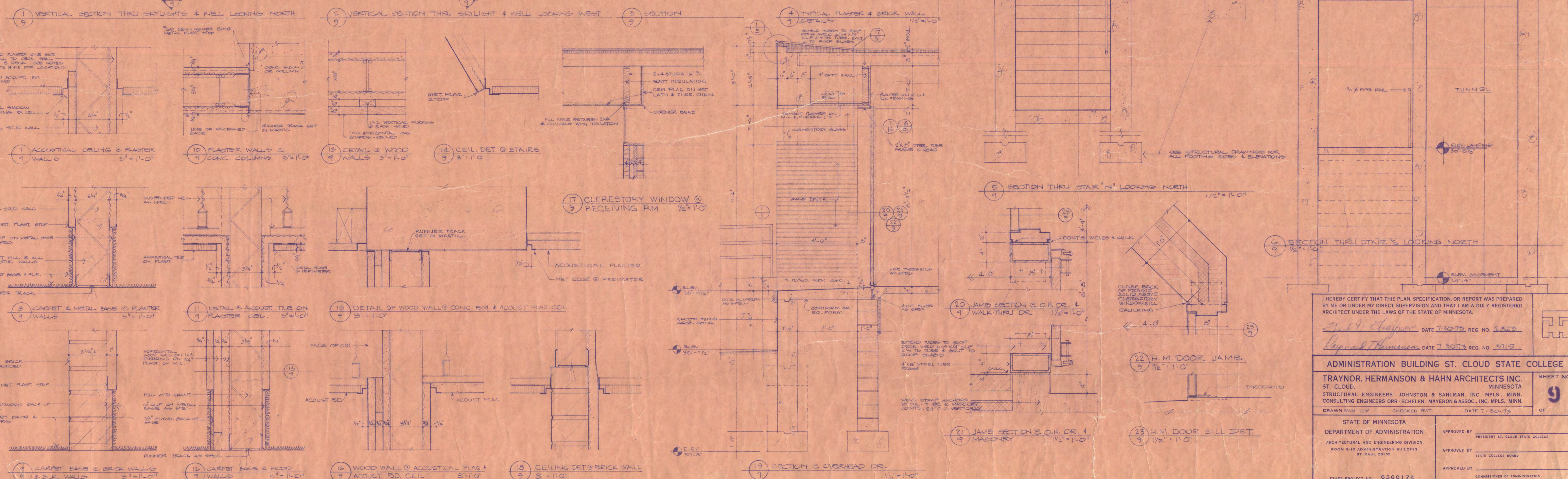
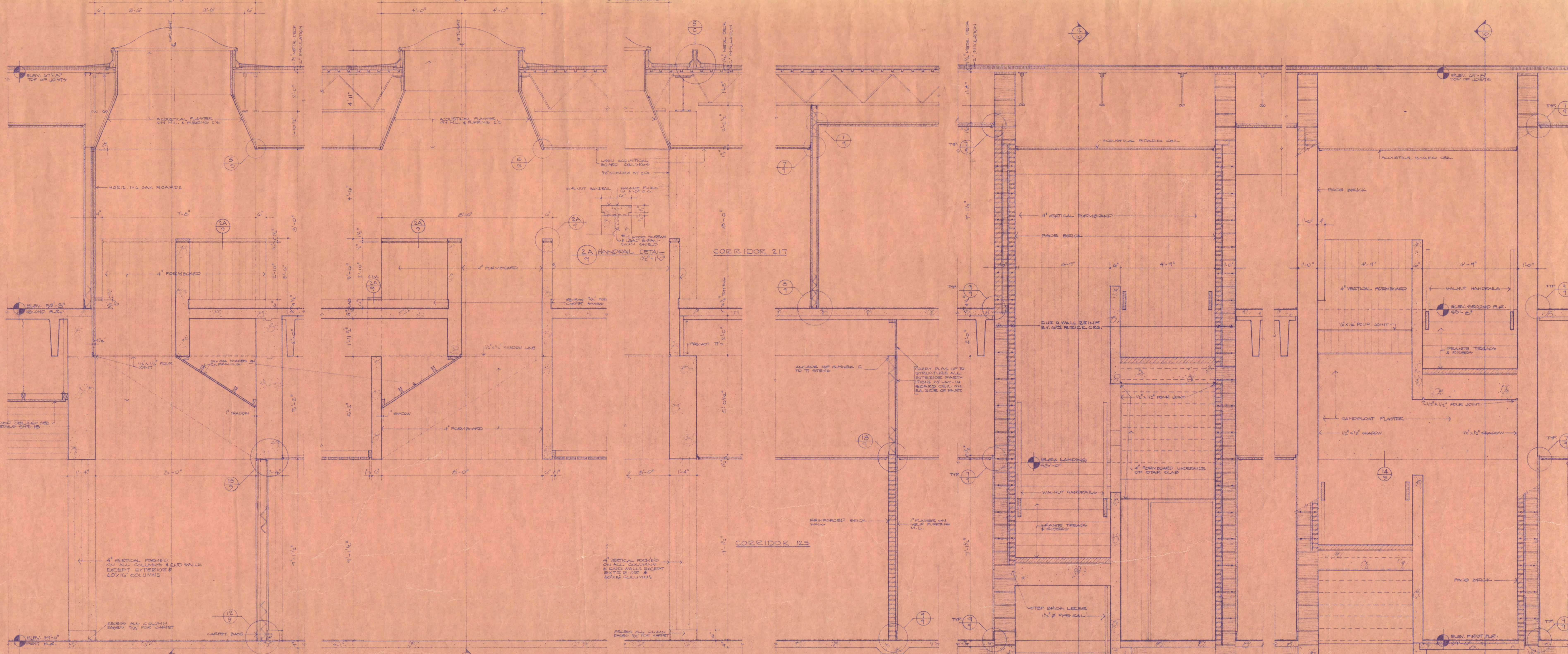
DRAWN *L.W.P.* CHECKED *PH* DATE 7-20-73

STATE OF MINNESOTA  
 DEPARTMENT OF ADMINISTRATION  
 ARCHITECTURAL AND ENGINEERING DIVISION  
 ROOM 610 ADMINISTRATION BUILDING  
 ST. PAUL, MINN.

APPROVED BY: PRESIDENT ST. CLOUD STATE COLLEGE  
 APPROVED BY: STATE COLLEGE BOARD  
 APPROVED BY: COMMISSIONER OF ADMINISTRATION  
 AN AUTHORIZED SIGNATURE

STATE PROJECT NO. 6360174

SHEET NO. 8 OF 16



I HEREBY CERTIFY THAT THIS PLAN, SPECIFICATION, OR REPORT WAS PREPARED BY ME OR UNDER MY DIRECT SUPERVISION AND THAT I AM A DULY REGISTERED ARCHITECT UNDER THE LAWS OF THE STATE OF MINNESOTA.

*Raymond Hermanson* DATE 7-30-75 REG. NO. 5715

*Raymond Hermanson* DATE 7-30-75 REG. NO. 5715

**ADMINISTRATION BUILDING ST. CLOUD STATE COLLEGE**

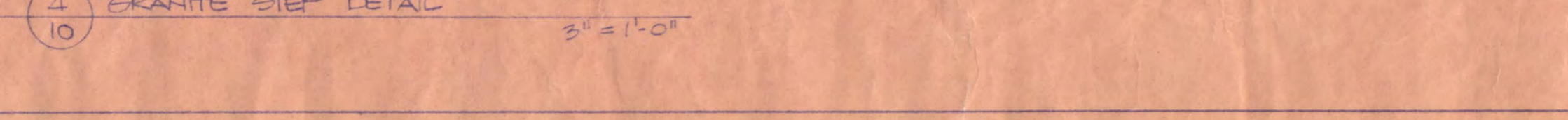
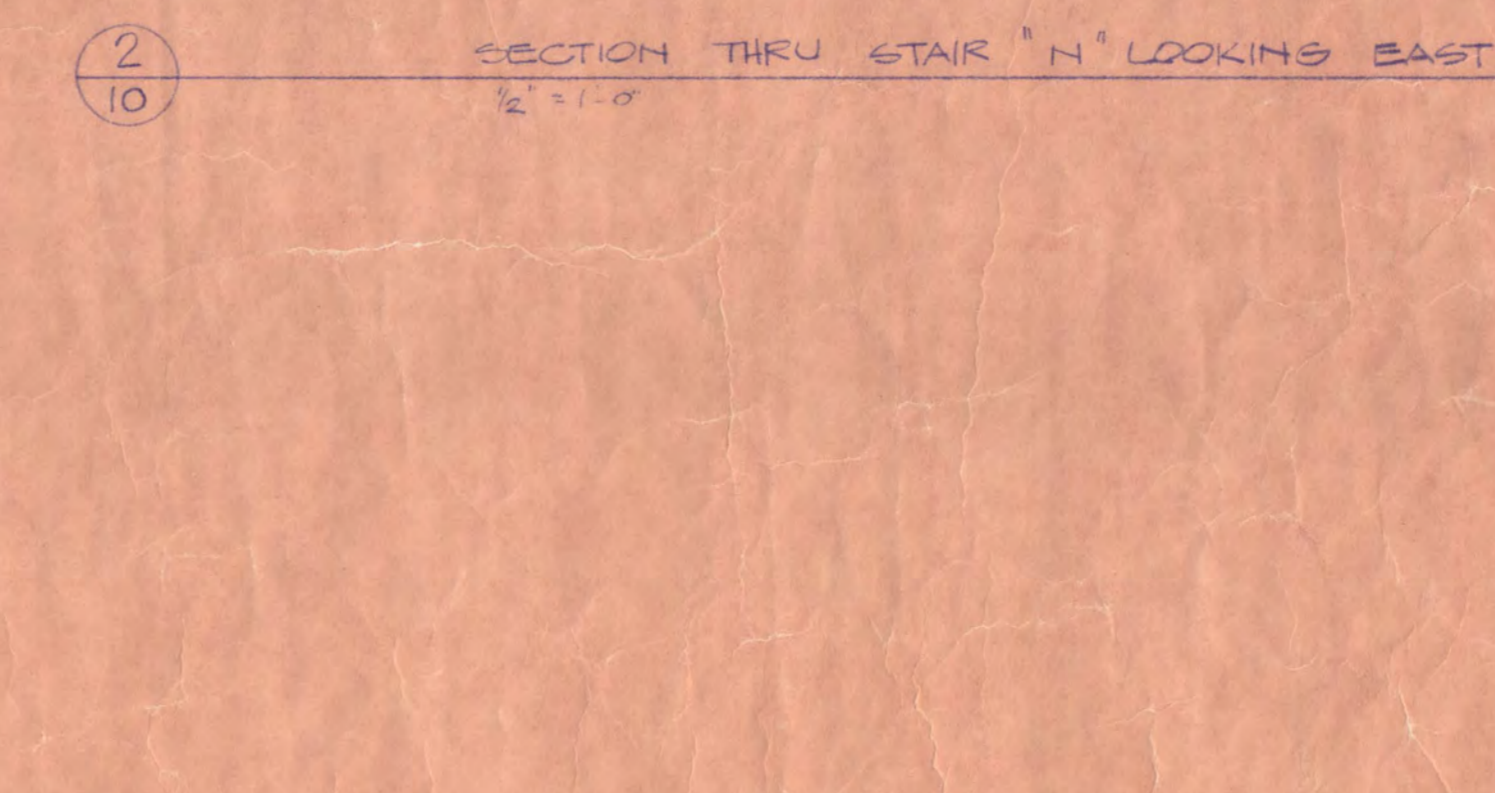
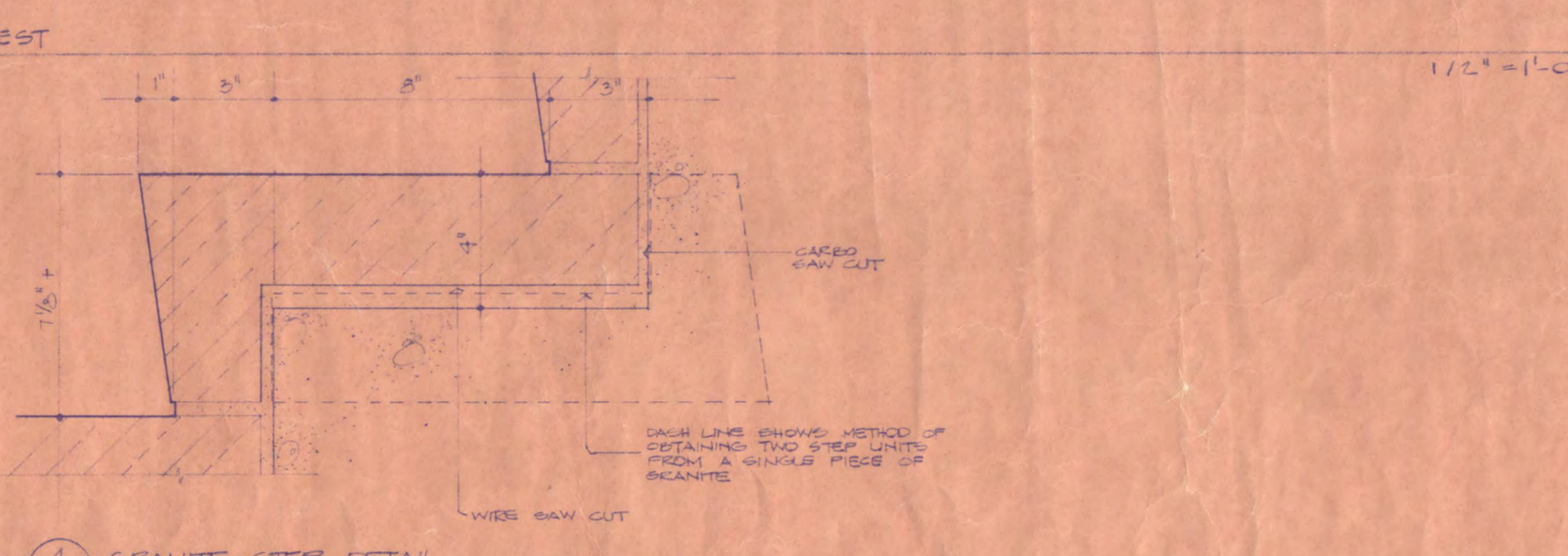
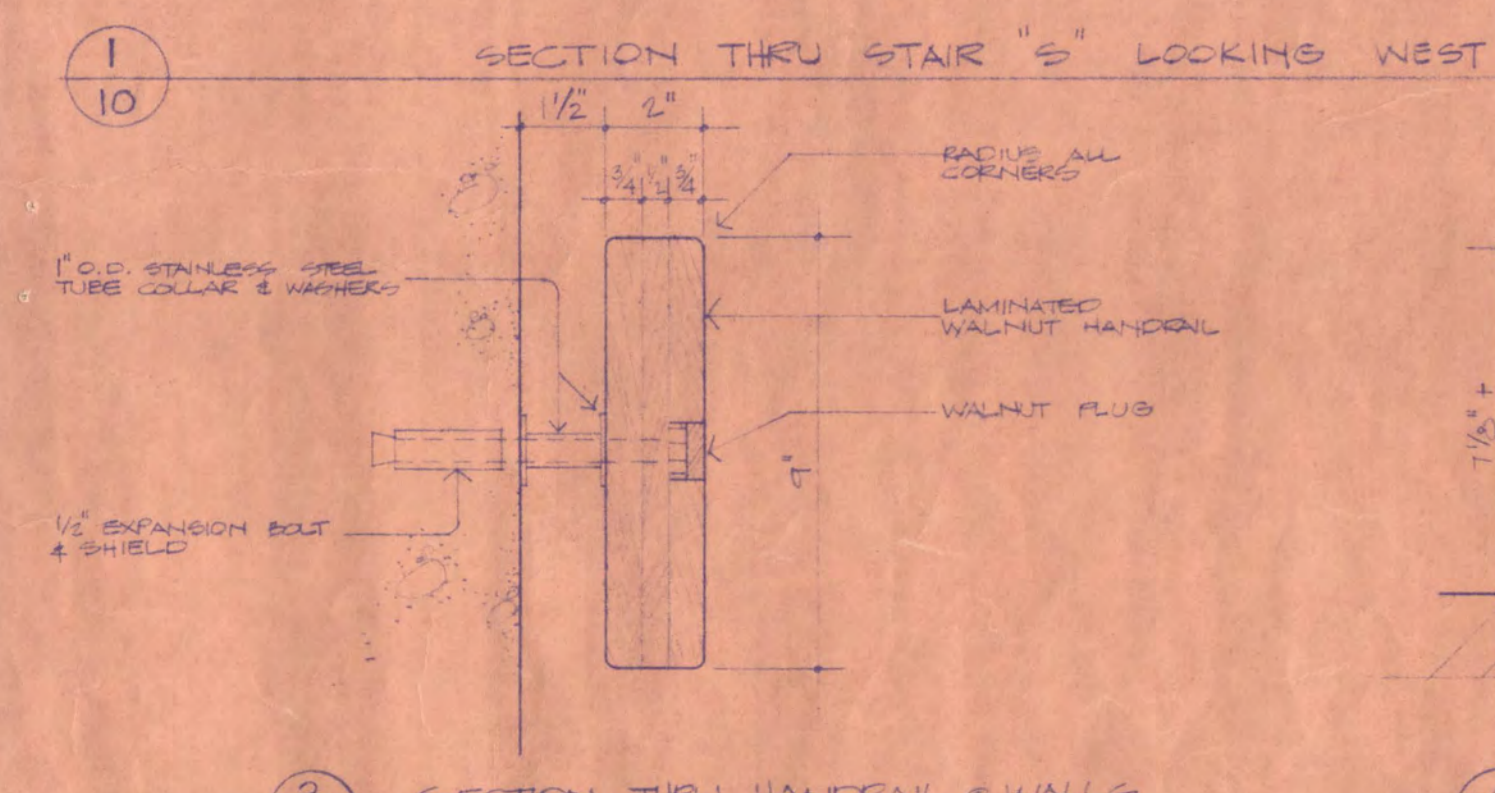
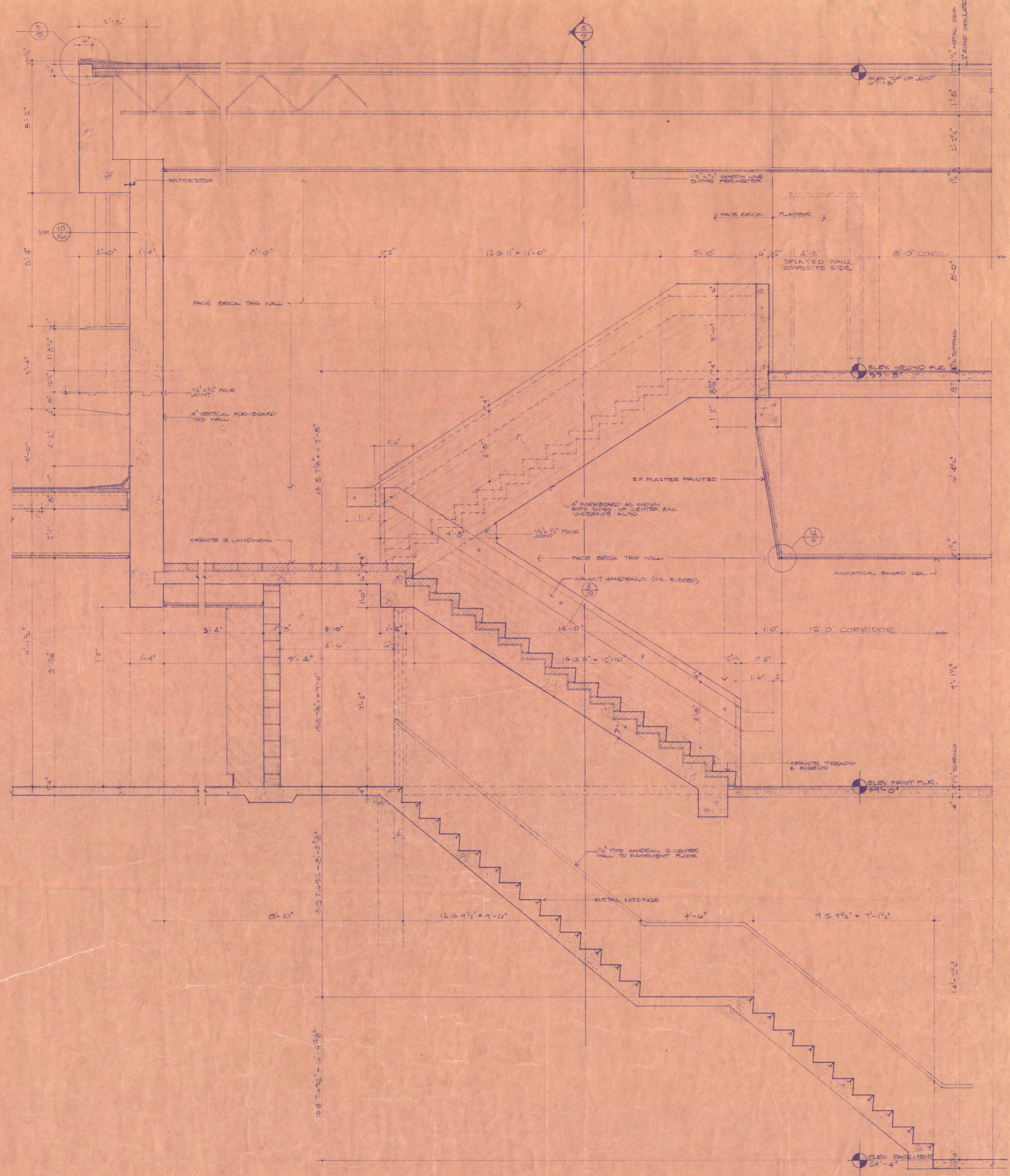
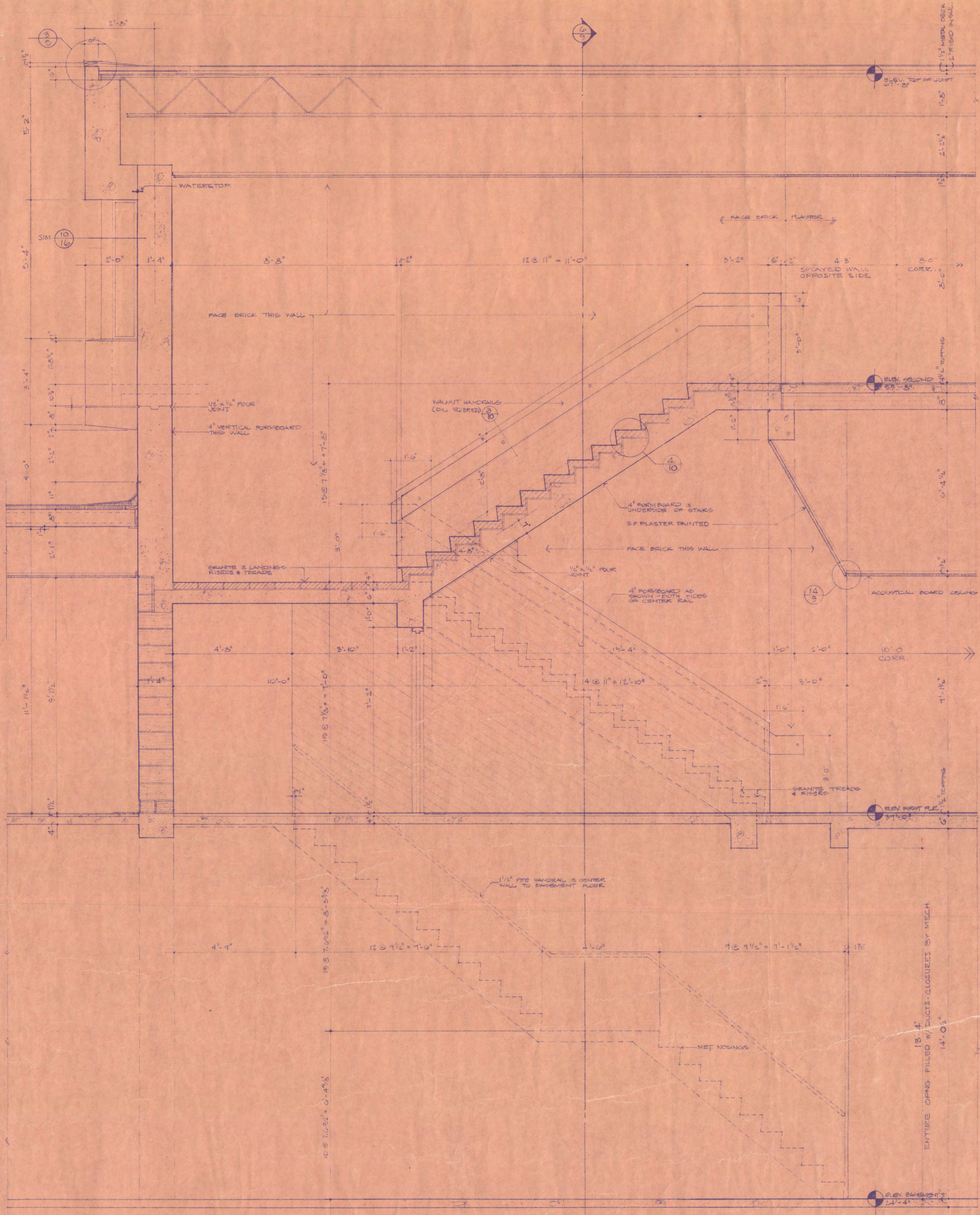
TRAYNOR, HERMANSON & HAHN ARCHITECTS INC. MINNESOTA  
 STRUCTURAL ENGINEERS JOHNSTON & SAHLMAN, INC. MPLS., MINN.  
 CONSULTING ENGINEERS ORR-SCHLEN-MAYERON & ASSOC., INC. MPLS., MINN.

DRAWN BY: [Signature] CHECKED BY: [Signature] DATE 7-30-75 OF 16

STATE OF MINNESOTA  
 DEPARTMENT OF ADMINISTRATION  
 ARCHITECTURAL AND ENGINEERING DIVISION  
 ROOM 6-10 ADMINISTRATION BUILDING  
 ST. PAUL 55155

APPROVED BY: [Signature] PRESIDENT ST. CLOUD STATE COLLEGE  
 APPROVED BY: [Signature] STATE COLLEGE BOARD  
 APPROVED BY: [Signature] COMMISSIONER OF ADMINISTRATION  
 AN AUTHORIZED SIGNATURE

STATE PROJECT NO. 6360174



I HEREBY CERTIFY THAT THIS PLAN, SPECIFICATION, OR REPORT WAS PREPARED BY ME OR UNDER MY DIRECT SUPERVISION AND THAT I AM A DULY REGISTERED ARCHITECT UNDER THE LAWS OF THE STATE OF MINNESOTA.

*Paul J. Chapman* DATE 1-30-73 REG. NO. 2823  
*Raymond H. Hanson* DATE 1-30-73 REG. NO. 3715

ADMINISTRATION BUILDING ST. CLOUD STATE COLLEGE  
 ST. CLOUD, MINNESOTA

TRAYNOR, HERMANSON & HAHN ARCHITECTS INC.  
 STRUCTURAL ENGINEERS JOHNSON & SAHLMAN, INC. Mpls., MINN.  
 CONSULTING ENGINEERS ORR - SCHELEN - MAYERON & ASSOC., INC. Mpls., MINN.

DRAWN *Paul J. Chapman* CHECKED *Paul J. Chapman* DATE 1-30-73

STATE OF MINNESOTA  
 DEPARTMENT OF ADMINISTRATION  
 ARCHITECTURAL AND ENGINEERING DIVISION  
 ROOM 6-10 ADMINISTRATION BUILDING  
 ST. PAUL 55455

APPROVED BY: PRESIDENT ST. CLOUD STATE COLLEGE  
 APPROVED BY: STATE COLLEGE BOARD  
 APPROVED BY: COMMISSIONER OF ADMINISTRATION AN AUTHORIZED SIGNATURE

STATE PROJECT NO. 6360174

SHEET NO. 10 OF 16