

ELECTRICAL DEMOLITION NOTES

- ① DISCONNECT CONVEYOR MOTORS & CONTROLS. REMOVE ASSOCIATED CONDUIT, SWITCHES & WIRING. CONVEYOR SYSTEM REMOVED BY OTHERS.
- ② DISCONNECT DISHWASHER & CONTROLS. REMOVE ASSOCIATED CONDUIT, SWITCHES & WIRING. DISHWASHER REMOVED BY OTHERS.
- ③ EXISTING FIRE ALARM CONTROL PANEL TO BE REMOVED.
- ④ EXISTING TELEPHONE TERMINAL CABINET TO REMAIN.
- ⑤ EXISTING MAIN SWITCHBOARD TO REMAIN.
- ⑥ RELOCATE EXISTING LIGHT FIXTURE AND SWITCHES & RECONNECT. REFER TO SHT. E-4
- ⑦ RELOCATE EXISTING EXIT LIGHT & RECONNECT. REFER TO SHEET E-4
- ⑧ NO ELECTRICAL DEMOLITION IN THIS AREA UNLESS NOTED. CONDUIT & WIRING RUNNING THROUGH AREA THAT ARE ASSOCIATED WITH WORK IN OTHER AREAS SHALL BE REMOVED.



lundquist, wilmar, schultz and martin, inc.
consulting engineers
baker court suite 300 • 821 raymond ave.
saint paul, mn 55114 • 612/842-9771

COPYRIGHT 1986 BY FREDRIC WEMLINGER AND ASSOCIATES, INC. THE CONTENTS OF THIS DOCUMENT ARE FOR THE SOLE AND EXCLUSIVE USE FOR THE PROJECT AND SITE IDENTIFIED HEREON. ANY OTHER USE NOT SPECIFICALLY AUTHORIZED BY THE ARCHITECT ENGINEER IS PROHIBITED.

I HEREBY CERTIFY THAT THIS PLAN SPECIFICATION OR REPORT WAS PREPARED BY ME OR UNDER MY DIRECT SUPERVISION AND THAT I AM DULY REGISTERED ARCHITECT/ENGINEER UNDER THE LAWS OF THE STATE OF MINNESOTA.

Jaylan Bender
DATE 12-15-86 REG. NO. 11698



FREDRIC WEMLINGER AND ASSOCIATES INC.
ARCHITECTS AND ENGINEERS
SAINT CLOUD, MINNESOTA 56301
TELEPHONE 812-253-2100

**GARVEY COMMONS/
SHERBURNE HALL
ADDITIONS & REMODELING**
ST. CLOUD STATE UNIVERSITY
ST. CLOUD MINNESOTA

REVISED	PROJECT NO. 86015
	ISSUE DATE 12-15-86
	DRAWN BY REF/KDH
	CHECKED BPS
	APPROVED <i>JW</i>
	ARCHITECT
	SCALE AS NOTED



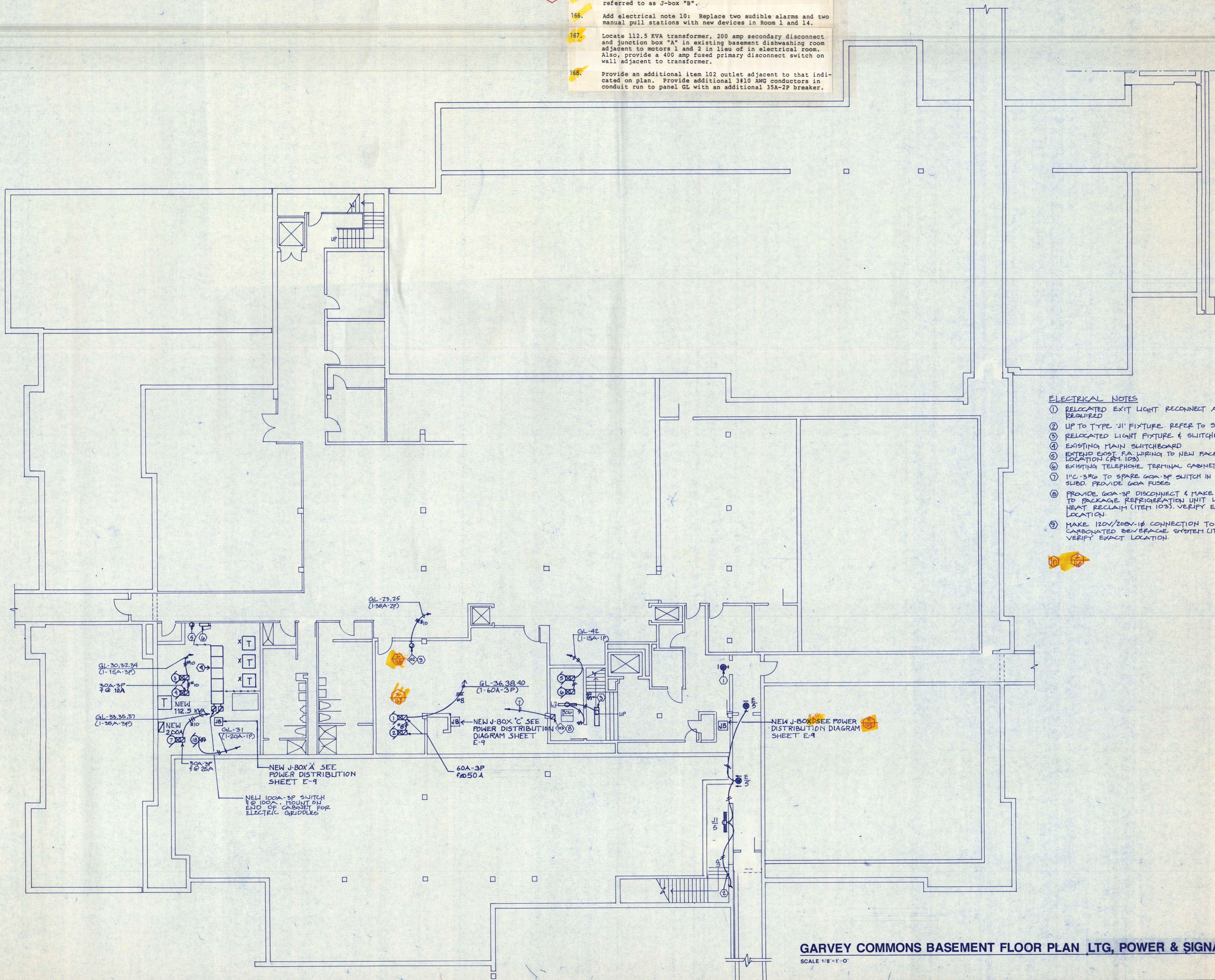
E-3

OF 11

GARVEY COMMONS BASEMENT FLOOR PLAN - DEMOLITION

SCALE 1/8"=1'-0"

- 165. New J-box in lower right hand corner of plan shall be referred to as J-box "B".
- 166. Add electrical note 10: Replace two audible alarms and two manual pull stations with new devices in Room 1 and 14.
- 167. Locate 112.5 KVA transformer, 200 amp secondary disconnect and junction box "A" in existing basement dishwashing room adjacent to motors 1 and 2 in lieu of in electrical room. Also, provide a 400 amp fused primary disconnect switch on wall adjacent to transformer.
- 168. Provide an additional item 102 outlet adjacent to that indicated on plan. Provide additional 3/10 AWG conductors in conduit run to panel GL with an additional 35A-2P breaker.



ELECTRICAL NOTES

- ① RELOCATED EXIT LIGHT RECONNECT AS REQUIRED
- ② UP TO TYPE 'J1' FIXTURE. REFER TO DHT.E-3
- ③ RELOCATED LIGHT FIXTURE & SWITCHES
- ④ EXISTING MAIN SWITCHBOARD
- ⑤ EXTEND EXIST. FA WIRING TO NEW FA CP LOCATION (CMT. 103)
- ⑥ EXISTING TELEPHONE TERMINAL CABINET
- ⑦ 1/1C-3P@ TO SPARE 60A-3P SWITCH IN MAIN SUBD. PROVIDE 60A FUSES
- ⑧ PROVIDE 60A-3P DISCONNECT & MAKE CONN. TO PACKAGE REFRIGERATION UNIT WITH HEAT RECLAIM (ITEM 103). VERIFY EXACT LOCATION.
- ⑨ MAKE 120V/200V-1P CONNECTION TO CARBONATED BEVERAGE SYSTEM (ITEM 102). VERIFY EXACT LOCATION.



LUNDQVIST
 lundquist, wilmar, schultz and martin, inc.
 consulting engineers
 baker court suite 300 • 821 raymond ave.
 saint paul, mn 55114 • 612/642-9771

COPYRIGHT © 1986 BY FREDRIC WEMLINGER AND ASSOCIATES, INC.
 THE CONTENTS OF THIS DOCUMENT ARE FOR THE SOLE AND EXCLUSIVE USE FOR THE PROJECT AND SITE DESIGNATED HEREON. ANY OTHER USE NOT SPECIFICALLY AUTHORIZED BY THE ARCHITECT/ENGINEER IS PROHIBITED.

I HEREBY CERTIFY THAT THIS PLAN SPECIFICATION OR REPORT WAS PREPARED BY ME OR UNDER MY DIRECT SUPERVISION AND THAT I AM DULY REGISTERED PROFESSIONAL ENGINEER UNDER THE LAWS OF THE STATE OF MINNESOTA

Rayland Bender
 DATE 12-15-86 REG. NO. 11628

FREDRIC WEMLINGER AND ASSOCIATES, INC.
 ARCHITECTS AND ENGINEERS
 SAINT CLOUD, MINNESOTA 56301
 TELEPHONE 612-253-8100

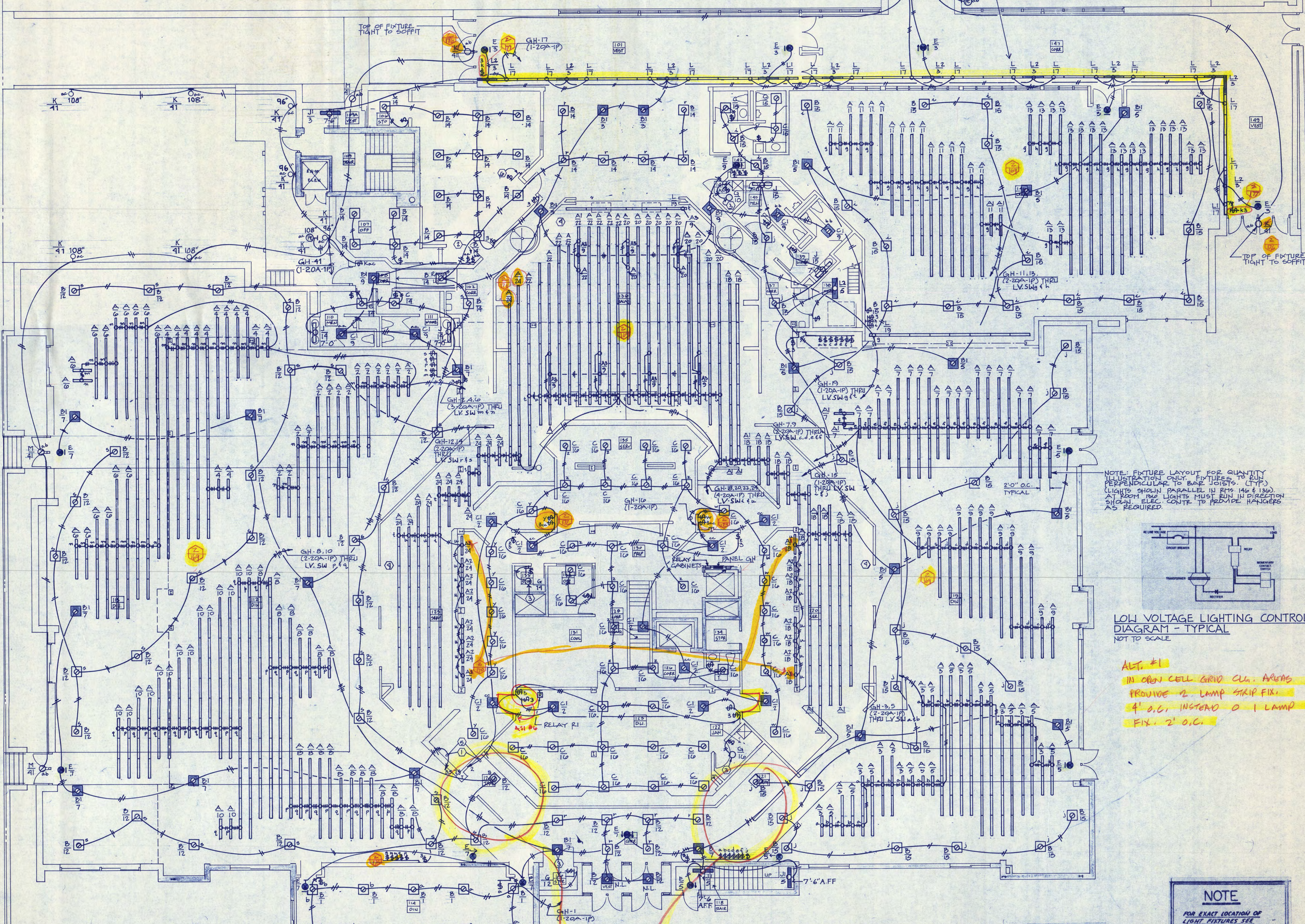
**GARVEY COMMONS/
 SHERBURNE HALL
 ADDITIONS & REMODELING**
 ST. CLOUD STATE UNIVERSITY
 ST. CLOUD MINNESOTA

REVISED	PROJECT NO. 86015
	ISSUE DATE 12-15-86
	DRAWN BY REF/KDH
	CHECKED BPS
	APPROVED FV
	ARCHITECT
	SCALE AS NOTED

GARVEY COMMONS BASEMENT FLOOR PLAN LTG, POWER & SIGNAL
 SCALE 1/8"=1'-0"

E-4
 NORTH
 OF 11

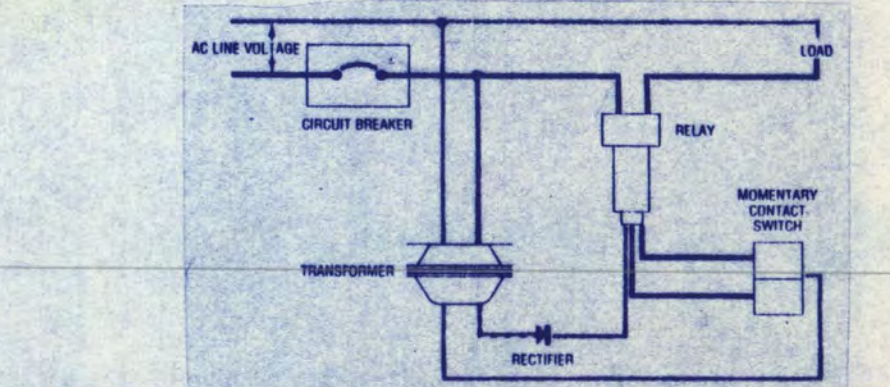
- 169. Add: At all areas in the existing building where light fixtures Type A are to be installed, the existing bar joist span in the north-south direction; in the addition, the new bar joist span is in the east-west direction.
- 170. Fixtures with Type "A1" designation shall be Type "A".
- 171. Provide a Type "A3" fixture on emergency circuit 9 in lieu of Type "A" on circuit 24 in serving area south of Corridor 102.
- 172. Locate switches y and 3cc about 8 feet south of present location near Room 125A.
- 173. Locate switches w and 3cc about 8 feet north of present location near Room 120A.
- 174. Add Electrical Note 7: Install light switches as far to the north as possible on the new wall construction.
- 175. Reference Electrical Note 7 adjacent to switches s, n, m, q, p and 3 way on east wall of Room 112.
- 176. Provide a Type "N" light fixture in lieu of Type "K" at entry doors 101, 148 and 149. Locate on back side of beam under glass sign approximately 8'-6" above sidewalk. Aim up into soffit space.
- 177. Provide an additional conductor between 3-way switches 'k' for cove lighting in Rooms 101, 147 & 149.



NOTE: COORDINATE INSTALLATION OF TYPE 'L' FIXTURES IN TROUGH WITH GENERAL CONTRACTOR REFER TO ARCHITECTURAL DETAIL B4.5/A-10

MOUNT PHOTO-CELL 1'-0" BELOW ROOF LINE

NOTE: FIXTURE LAYOUT FOR QUANTITY ILLUSTRATION ONLY. FIXTURES TO RUN PERPENDICULAR TO BAR JOISTS. (TYP) LIGHTS SHOWN PARALLEL IN RYS 146 & 136. AT BOTH RYS LIGHTS MUST RUN IN DIRECTION SHOWN. ELEC. CONTR. TO PROVIDE HANGERS AS REQUIRED.

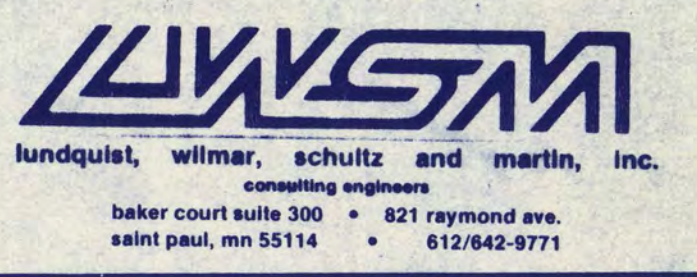


LOW VOLTAGE LIGHTING CONTROL DIAGRAM - TYPICAL
NOT TO SCALE

ALT. #1
IN OPEN CELL GRID CL. AREAS
PROVIDE 2 LAMP STRIP FIX.
4' O.C. INSTEAD OF 1 LAMP
FIX. 2' O.C.

LIGHTING CONTROL SCHEDULE		
SWITCH LV	NO. OF RELAYS CONTROLLED	CIRCUIT CONTROLLED
a	1	GH-3
b	1	GH-5
c	1	GH-9
d	1	GH-9
e	1	GH-7
f	1	GH-7
g	3	GH-11,15,19
h	2	GH-11,15
i	1	GH-15
j	1	GH-15
m	3	GH-2,4,6
n	3	GH-2,4,6
p	2	GH-B,10
q	2	GH-B,10
r	2	GH-12,14
s	2	GH-12,14
t	5	GH-18,20,22,24,19
u	4	GH-18,20,22,24

- ELECTRICAL NOTES**
- 1 DOWN TO 208/120V EMERGENCY PANEL IN BASEMENT ELECTRICAL ROOM VERIFY LOCATION. CIRCUIT NOS SHOWN ARE FOR REFERENCE ONLY. ACTUAL CCT #S MAY VARY EM. PNL.
 - 2 ENGRAVE PLATE TOILET RM. LTG. ENGRAVE PLATE SOUTH TOILET RM. LTG./NORTH TOILET RM. LTG. REFER TO SHEET E-6
 - 3 PROVIDE A UL LISTED TUBE OVER EACH BARE LAMP IN FOOD SERVING & PREPARATION AREAS.
 - 4 ROUTE EACH CIRCUIT THROUGH ONE POLE OF RELAY R1. REFER TO EMERGENCY LIGHTING CONTROL DIAGRAM ON SHEET E-9
 - 5 LOW VOLTAGE SWITCHES MASTER CONTROL LOCATION. SWITCHES & THRU W.



COPYRIGHT 1986 BY FREDRIC WEHLINGER AND ASSOCIATES, INC. THE CONTENTS OF THIS DOCUMENT ARE FOR THE SOLE AND EXCLUSIVE USE FOR THE PROJECT AND SITE DESIGNATED HEREON. ANY OTHER USE NOT SPECIFICALLY AUTHORIZED BY THE ARCHITECT IS PROHIBITED.

I HEREBY CERTIFY THAT THIS PLAN, SPECIFICATION OR REPORT WAS PREPARED BY ME OR UNDER MY DIRECT SUPERVISION AND THAT I AM DULY REGISTERED AS AN ENGINEER UNDER THE LAWS OF THE STATE OF MINNESOTA.

Raymond Conner
DATE 12-15-86 REG NO 11698



**GARVEY COMMONS/
SHERBURNE HALL
ADDITIONS & REMODELING**
ST. CLOUD STATE UNIVERSITY
ST. CLOUD MINNESOTA

REVISED PROJECT NO. 80015
ISSUE DATE 12-15-86
DRAWN BY REF/KDH
CHECKED Bps
APPROVED ARCHITECT FW
SCALE AS NOTED

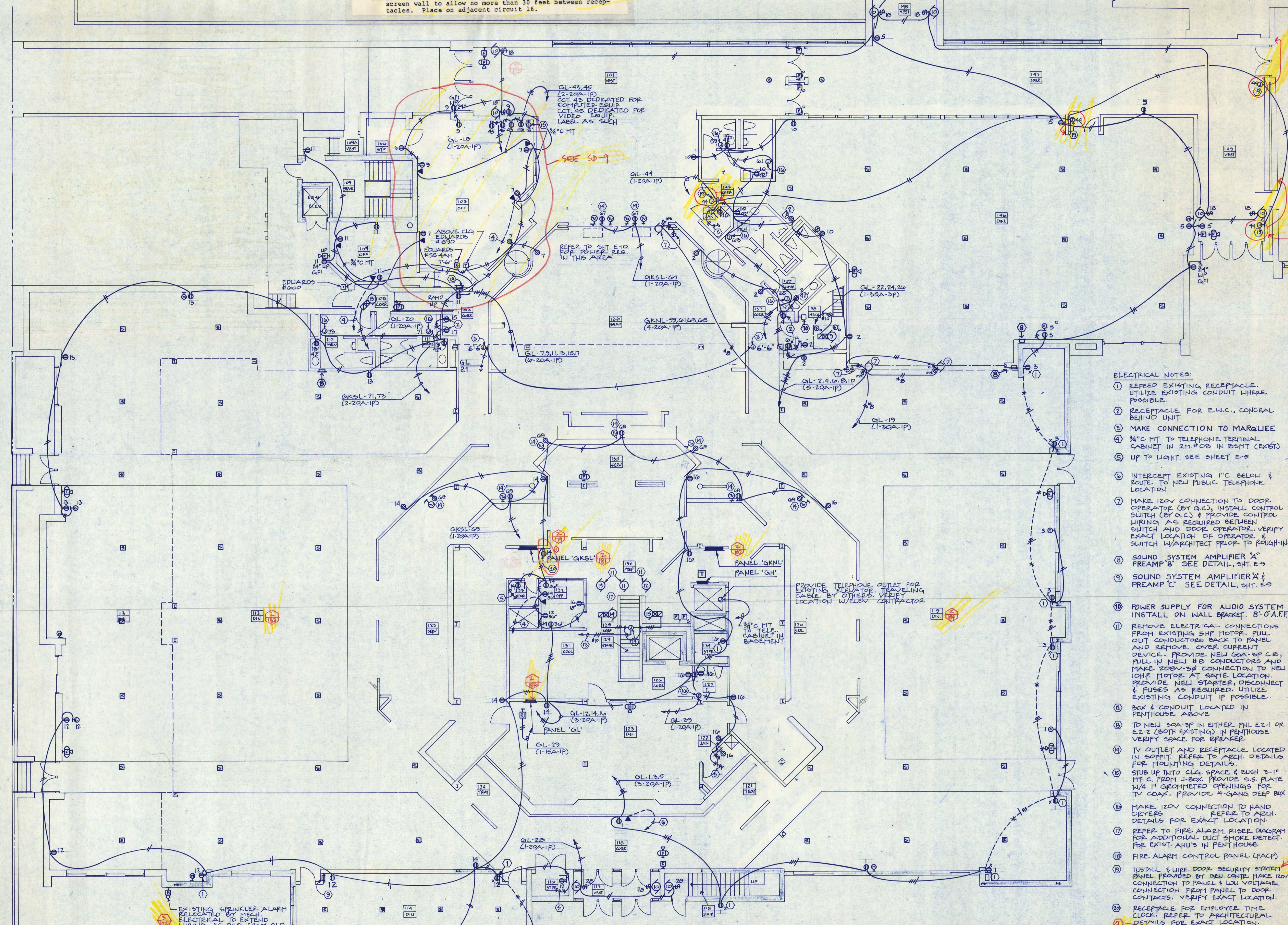
NOTE
FOR EXACT LOCATION OF LIGHT FIXTURES SEE ARCHITECTURAL REFLECTED CEILING PLAN.

GARVEY COMMONS FIRST FLOOR PLAN - LIGHTING
SCALE 1/8"=1'-0"

- 178. Add Electrical Note 21 to plan as follows: Provide a Simplex #2310 12" square clock at each clock outlet location.
- 179. Reference Electrical Note 1 adjacent to each clock outlet indicated.
- 180. Provide a 400 amp flush mount circuit breaker and NEMA 1 enclosure adjacent to panel "GKSL" for main panel disconnect.
- 181. Provide a 400 amp flush mount circuit breaker and NEMA 1 enclosure adjacent to panel "GL" for main panel disconnect.
- 182. Provide a 225 amp flush mount circuit breaker and NEMA 1 enclosure adjacent to panel "GL" for main panel disconnect in lieu of an integral main circuit breaker in panel.
- 183. Provide three additional receptacle outlets in room 112, two shall be located on columns and one on screen wall to allow no more than 30 feet between receptacles. Place on adjacent circuit 13.
- 184. Provide one additional receptacle outlet in room 119 on screen wall to allow no more than 30 feet between receptacles. Place on adjacent circuit 16.

- 122. At the sprinkler alarm at the southeast corner of the building add: The electrical contractor shall provide a red strobe light approved by the St. Cloud Fire Department mounted 4' above the roof edge directly above the sprinkler alarm. Mount the light on a 1-1/2" rigid metal conduit. Extend and connect wiring from the sprinkler alarm.

NOTE
CEILING PLENUM IN ROOMS 101, 147, 148 & 149 IS VERY TIGHT. COORDINATE ELECTRICAL WORK WITH MECHANICAL WORK.



- ELECTRICAL NOTES:**
- 1 REUSE EXISTING RECEPTACLE. UTILIZE EXISTING CONDUIT WHERE POSSIBLE.
 - 2 RECEPTACLE FOR E.W.C., CONCEAL BEHIND UNIT
 - 3 MAKE CONNECTION TO MARQUEE
 - 4 3/4" C MT TO TELEPHONE TERMINAL CABINET IN RM. #08 IN BSMT. (EXIST)
 - 5 UP TO LIGHT SEE SHEET E-6
 - 6 INTERCEPT EXISTING 1" C BELOW & ROUTE TO NEW PUBLIC TELEPHONE LOCATION
 - 7 MAKE 120V CONNECTION TO DOOR OPERATOR (BY G.C.), INSTALL CONTROL SWITCH (BY G.C.) & PROVIDE CONTROL WIRING AS REQUIRED BETWEEN SWITCH AND DOOR OPERATOR. VERIFY EXACT LOCATION OF OPERATOR & SWITCH W/ARCHITECT PRIOR TO ROUGH-IN.
 - 8 SOUND SYSTEM AMPLIFIER "A" PREAMP "B" SEE DETAIL, SHIT. E-9
 - 9 SOUND SYSTEM AMPLIFIER "C" PREAMP "C" SEE DETAIL, SHIT. E-9
 - 10 POWER SUPPLY FOR AUDIO SYSTEM INSTALL ON WALL BRACKET. 8'-0" A.F.F.
 - 11 REMOVE ELECTRICAL CONNECTIONS FROM EXISTING SHP MOTOR. PULL OUT CONDUCTORS BACK TO PANEL AND REMOVE. COVER CURRENT DEVICE. PROVIDE NEW 60A-3P C.B., PULL IN NEW #8 CONDUCTORS AND MAKE 208V-3P CONNECTION TO NEW 10HP MOTOR AT SAME LOCATION. PROVIDE NEW STARTER, DISCONNECT & FUSES AS REQUIRED. UTILIZE EXISTING CONDUIT IF POSSIBLE.
 - 12 BOX & CONDUIT LOCATED IN PENTHOUSE ABOVE
 - 13 TO NEW 30A-3P IN EITHER PNL E2-1 OR E2-2 (BOTH EXISTING) IN PENTHOUSE. VERIFY SPACE FOR BREAKER.
 - 14 TV OUTLET AND RECEPTACLE LOCATED IN SOFFIT. REFER TO ARCH. DETAILS FOR MOUNTING DETAILS.
 - 15 STUB UP INTO CLG. SPACE & BUSH 3/4" MT C. FROM J-BOX. PROVIDE S.S. PLATE W/4 1" GROMMETTED OPENINGS FOR TV COAX. PROVIDE 4-GANG DEEP BOX
 - 16 MAKE 120V CONNECTION TO HAND DRYERS. REFER TO ARCH. DETAILS FOR EXACT LOCATION.
 - 17 REFER TO FIRE ALARM RISER DIAGRAM FOR ADDITIONAL DUCT SMOKE DETECT. FOR EXIST. AHU'S IN PENTHOUSE
 - 18 FIRE ALARM CONTROL PANEL (FACP)
 - 19 INSTALL & WIRE DOOR SECURITY SYSTEM PANEL PROVIDED BY GEN. CONTR. MAKE 120V CONNECTION TO PANEL & LOW VOLTAGE CONNECTION FROM PANEL TO DOOR CONTACTS. VERIFY EXACT LOCATION.
 - 20 RECEPTACLE FOR EMPLOYEE TIME CLOCK. REFER TO ARCHITECTURAL DETAILS FOR EXACT LOCATION.



COPYRIGHT 1986 BY FREDRIC WEMLINGER AND ASSOCIATES, INC. THE CONTENTS OF THIS DOCUMENT ARE FOR THE SOLE AND EXCLUSIVE USE FOR THE PROJECT AND SITE DESIGNATED HEREON. ANY OTHER USE NOT SPECIFICALLY AUTHORIZED BY THE ARCHITECT IS PROHIBITED.

I HEREBY CERTIFY THAT THIS PLAN, SPECIFICATION, OR REPORT WAS PREPARED BY ME OR UNDER MY DIRECT SUPERVISION AND THAT I AM DULY REGISTERED AS AN ELECTRICAL ENGINEER UNDER THE LAWS OF THE STATE OF MINNESOTA.

Raymond Bender
DATE 12-15-86 REG. NO. 110095



**GARVEY COMMONS/
SHERBURNE HALL
ADDITIONS & REMODELING**
ST. CLOUD STATE UNIVERSITY
ST. CLOUD MINNESOTA

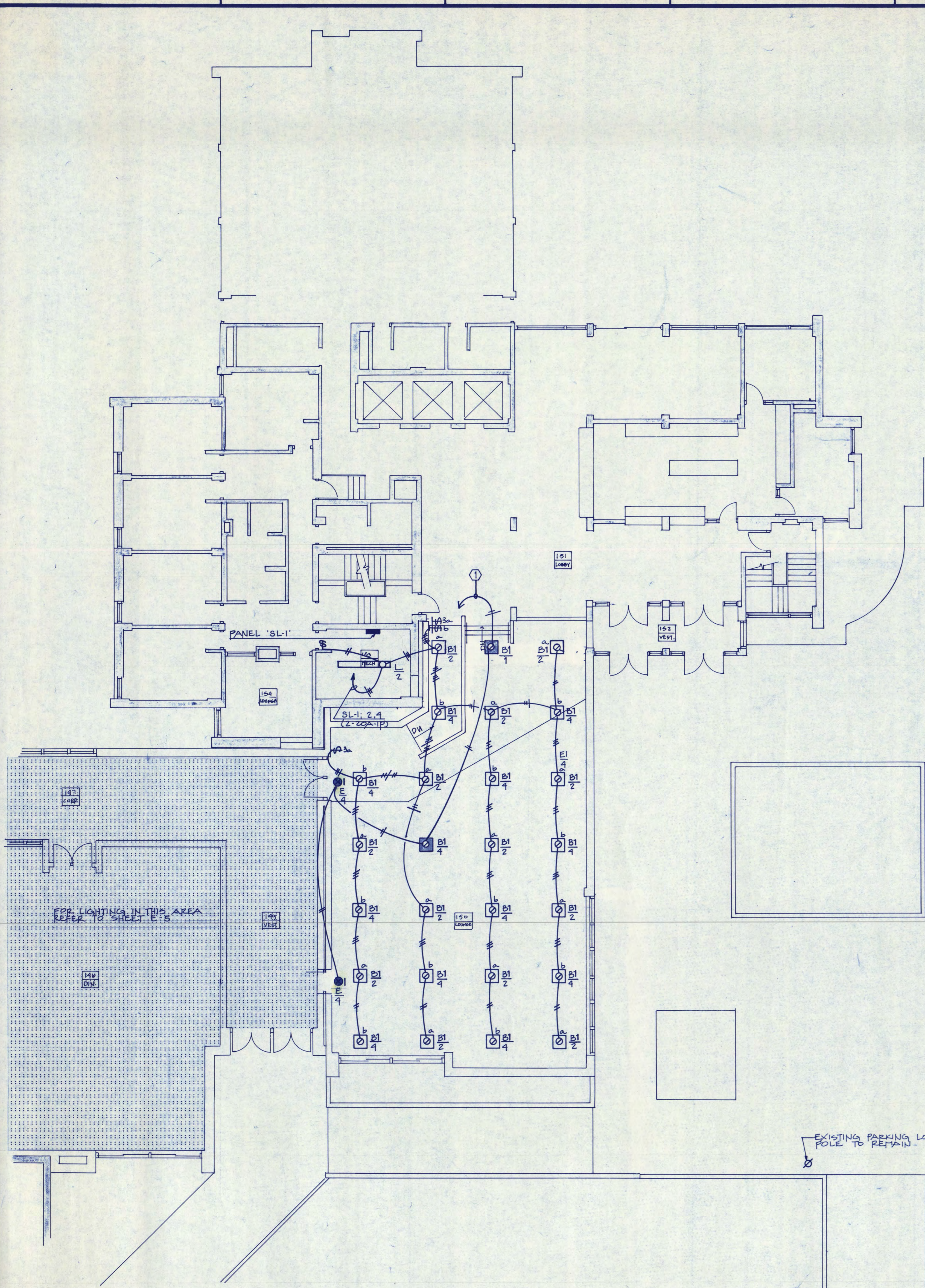
REVISION
1 DETAIL ALARM

PROJECT NO. 80015
ISSUE DATE 12-15-86
DRAWN BY REF/KDH
CHECKED EPS
APPROVED FW ARCHITECT
SCALE AS NOTED

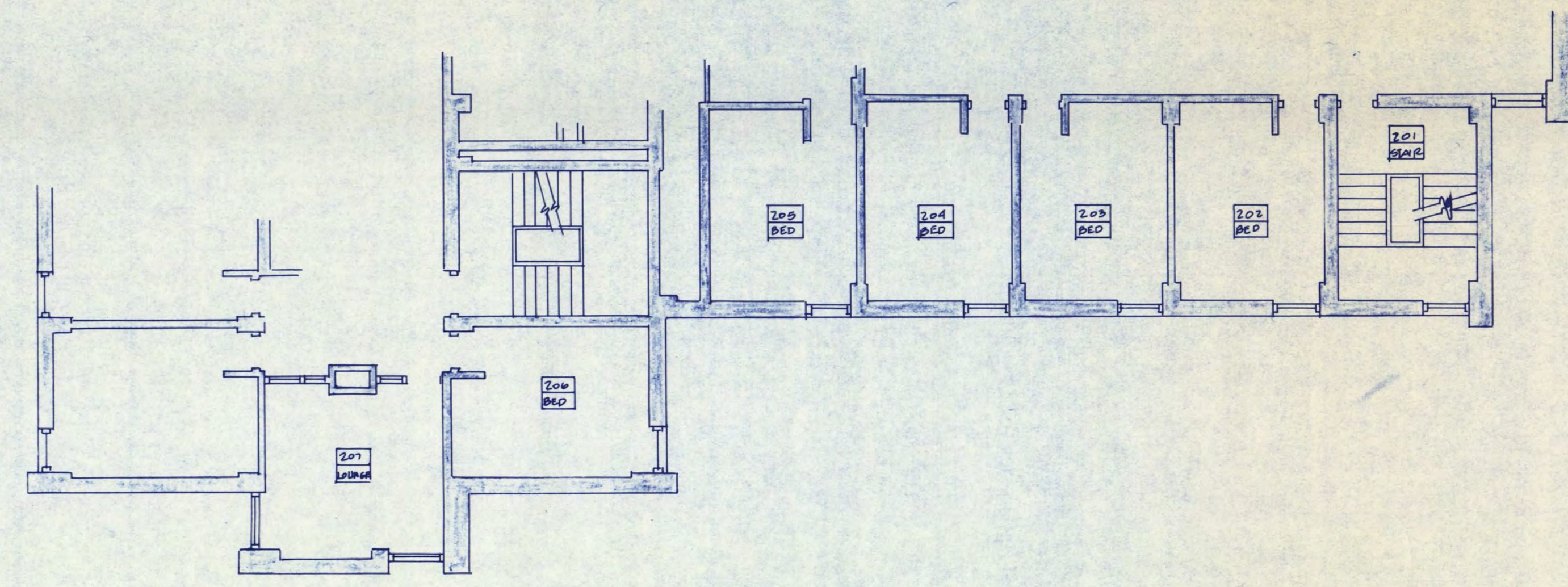
E-6
NORTH
OF 11

GARVEY COMMONS FIRST FLOOR PLAN - POWER & SIGNAL
SCALE 1/8"=1'-0"

REVISIONS IN LOCATION GIVEN TO L. KRIPPHORN BY PHASE 4/10/87 - CH



FIRST FLOOR PLAN - LIGHTING
SCALE 1/8" = 1'-0"



PARTIAL SECOND FLOOR PLAN
SCALE 1/8" = 1'-0"

ELECTRICAL NOTES

- ① DOWN TO 208/120V EMERGENCY PANEL IN BASEMENT ELECTRICAL ROOM. VERIFY LOCATION. CIRCUIT NUMBER IS FOR REFERENCE ONLY. ACTUAL NUMBER MAY VARY. EMERGENCY PANEL NIC.



lundquist, wilmar, schultz and martin, inc.
consulting engineers
baker court suite 300 • 821 raymond ave.
saint paul, mn 55114 • 612/642-9771

COPYRIGHT © 1988 BY FREDRIC WEHLINGER AND ASSOCIATES, INC. THE CONTENTS OF THIS DOCUMENT ARE FOR THE SOLE AND EXCLUSIVE USE FOR THE PROJECT AND SITE IDENTIFIED HEREON. ANY OTHER USE, NOT SPECIFICALLY AUTHORIZED BY THE ARCHITECT ENGINEER IS PROHIBITED.

I HEREBY CERTIFY THAT THIS PLAN, SPECIFICATION OR REPORT WAS PREPARED BY ME OR UNDER MY DIRECT SUPERVISION AND THAT I AM DULY REGISTERED ARCHITECT ENGINEER UNDER THE LAWS OF THE STATE OF MINNESOTA.

Loyland Bender
DATE 12-15-88 REG. NO. 11698



FREDRIC WEHLINGER AND ASSOCIATES INC.
ARCHITECTS AND ENGINEERS
SAINT CLOUD, MINNESOTA 56301
TELEPHONE 812-253-2100

**GARVEY COMMONS/
SHERBURNE HALL
ADDITIONS & REMODELING**
ST. CLOUD STATE UNIVERSITY
ST. CLOUD MINNESOTA

REVISED	PROJECT NO. 20015
	ISSUE DATE 12-15-88
	DRAWN BY REP/KDH
	CHECKED BPS
	APPROVED #W
	ARCHITECT
	SCALE AS NOTED



NORTH

E-7

OF 11