

MANHOLE DATA

| M.H. NO. | TOP ELEV. | BOTTOM ELEV. |
|----------|-----------|--------------|
| 1 | 1074.75 | 1059.87 |
| 2 | 1084.38 | 1058.75 |
| 3 | 1074.38 | 1018.83 |
| 4 | 1055.11 | 1017.21 |
| 5 | 1033.09 | 1027.89 |
| 6 | 1063.32 | 1017.38 |
| 7 | 104.36 | 1017.94 |

BENCH MARK DATA

NO. 1 TOP HYDRANT N.E. CORNER 5TH STREET & 2ND AVE. ELEV. 1037.75

NO. 2 TOP HYDRANT N.E. CORNER 3TH STREET & 2ND AVE. ELEV. 1036.65

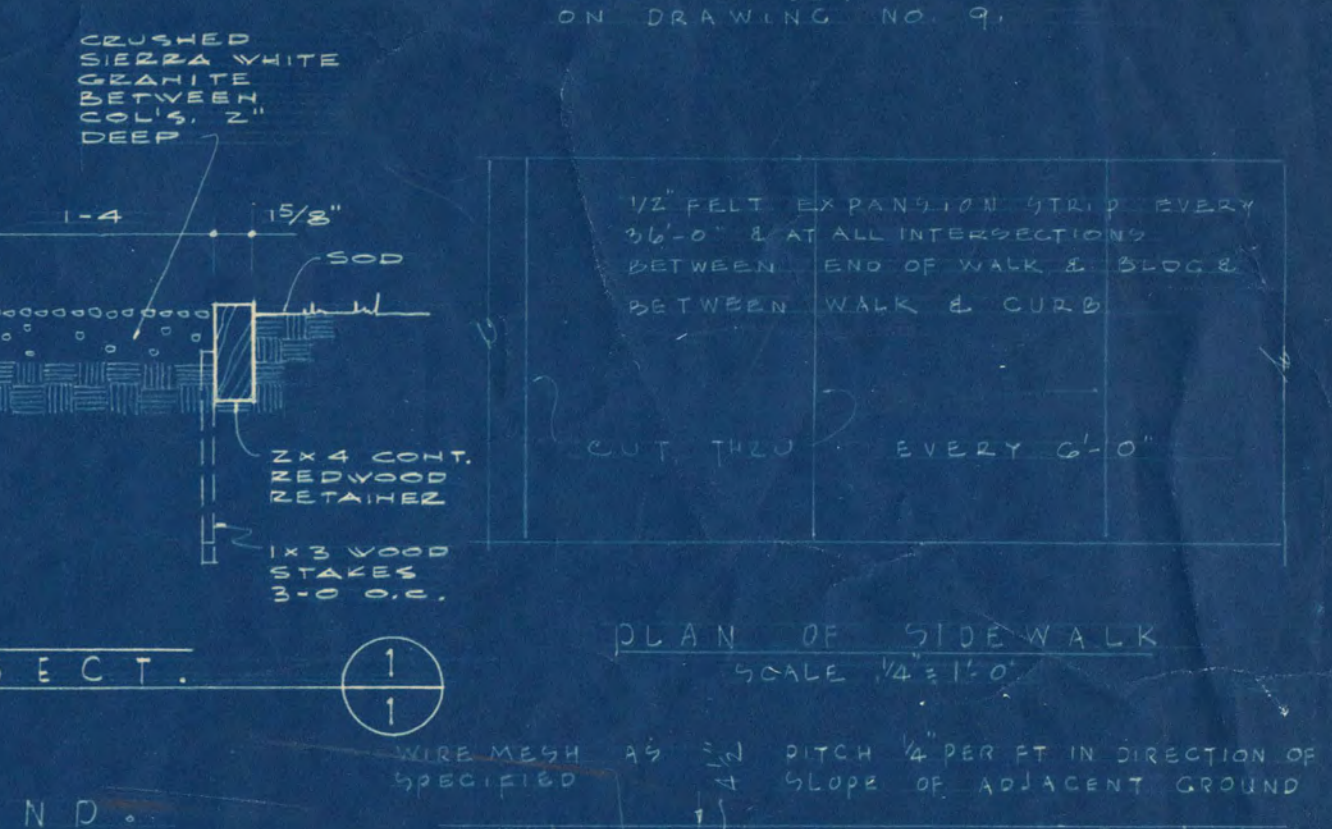
DETAIL NUMBER LEGEND

UPPER FIGURE INDICATES DRAWING NUMBER
LOWER FIGURE INDICATES DETAIL NUMBER

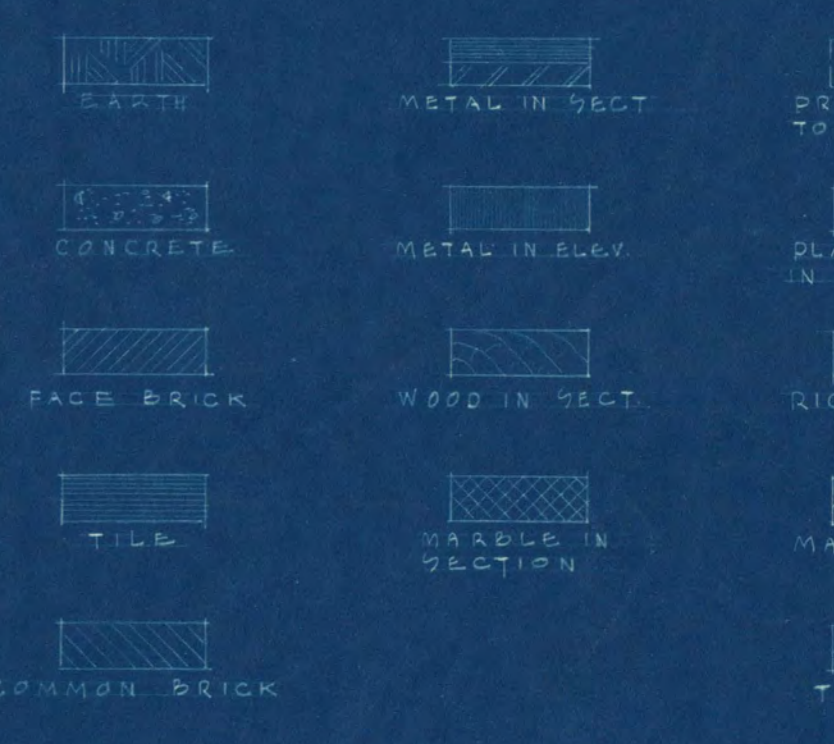
INDICATES WALL, AN ABOVE, AND IS A SECTION DETAIL. ARROW INDICATES DIRECTION TOWARD WHICH YOU ARE LOOKING

INDICATES SANG, AS ABOVE, AND IS A SECTION DETAIL. ARROW INDICATES DIRECTION TOWARD WHICH YOU ARE LOOKING

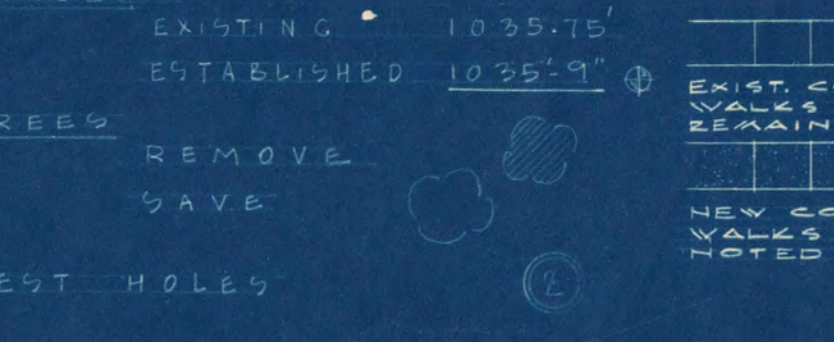
EXAMPLE: THIS ABOVE EXAMPLE INDICATES DETAIL NUMBER 5 TO BE FOUND ON DRAWING NO. 7.



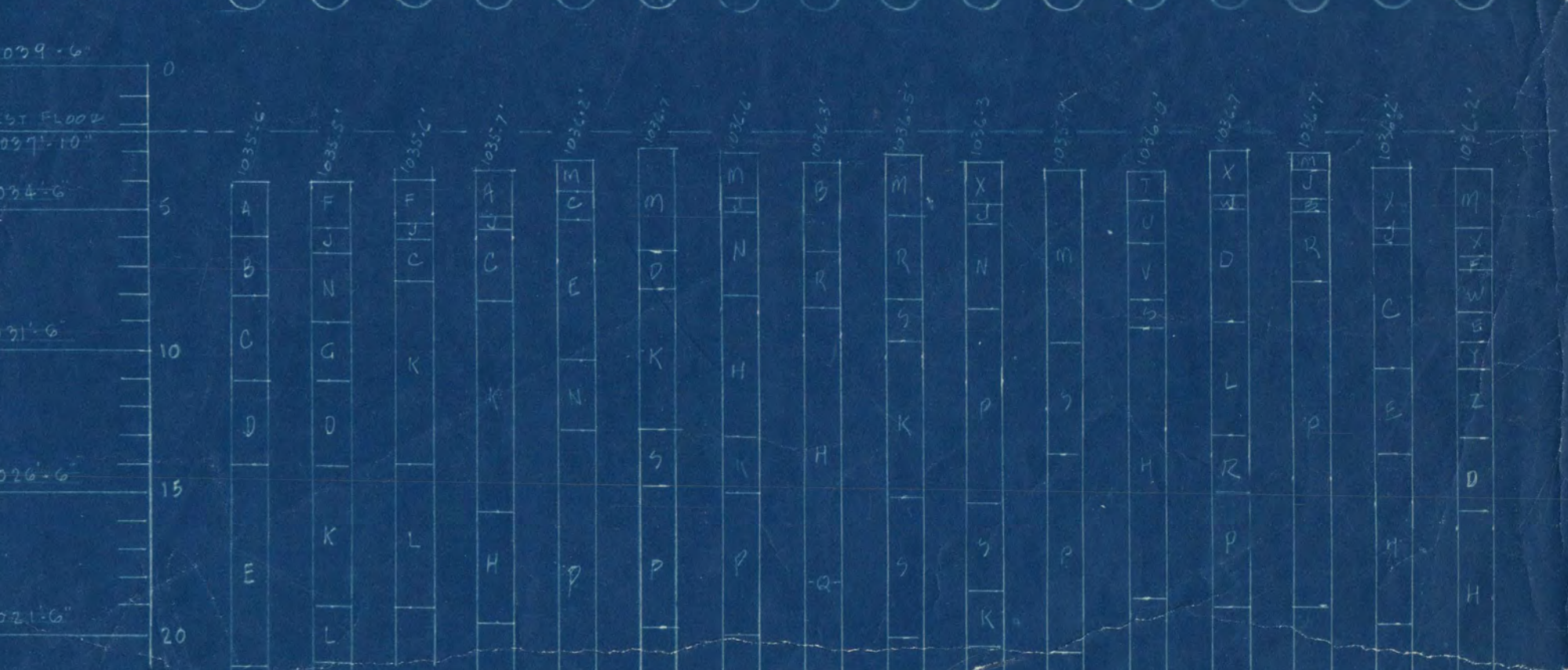
MATERIAL LEGEND

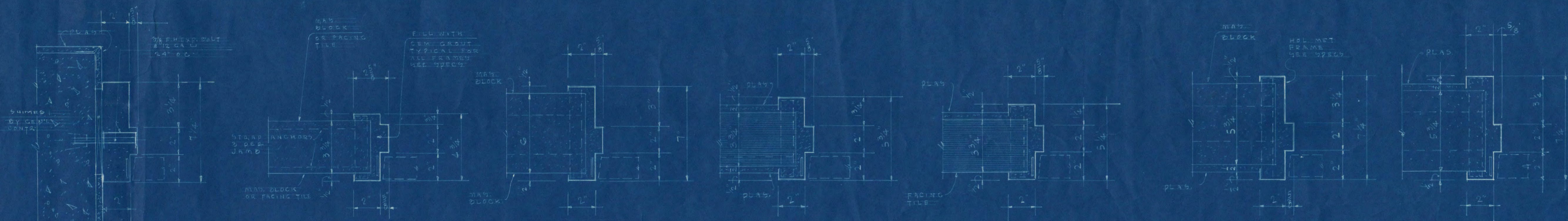


PLOT PLAN LEGEND



SOIL BORING DATA





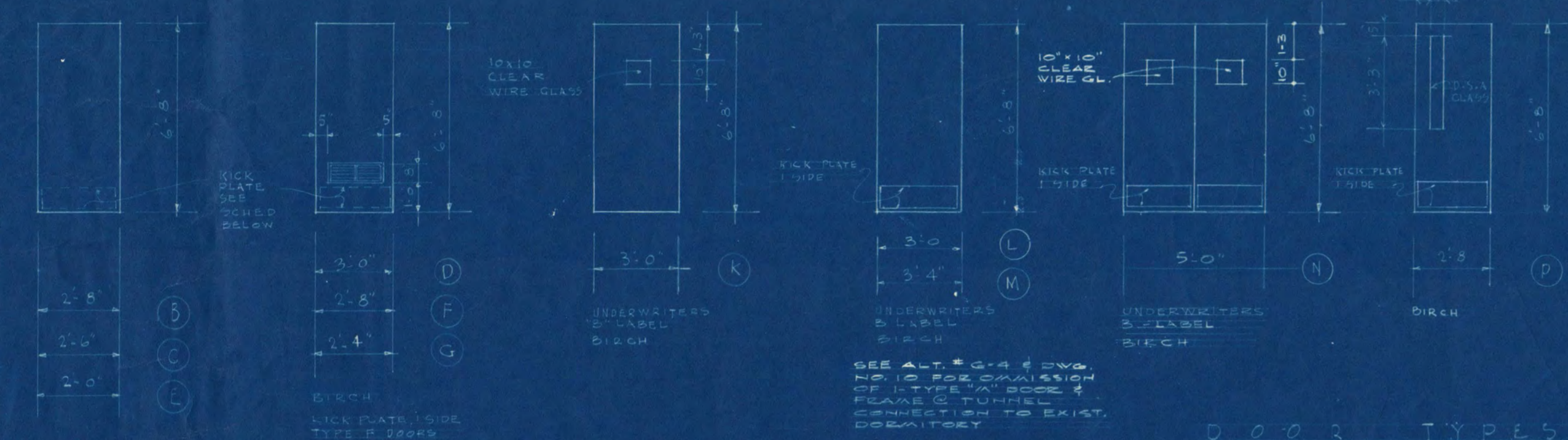
HOLLOW METAL DOOR FRAMES - TYPICAL JAMB SECTIONS FOR INTERIOR DOORS
SCALE: 3/4" = 1'-0"

Room & Space

| Room & Space | FLOORING | BASE | WALLS | CEILING | TRIM | NOTES |
|------------------|----------|------|-------|---------|------|--------------------------|
| 01 ELEV. 0900 | | | | | | |
| 02 CORRIDOR | | | | | | EXPOSED CONCRETE PAINTED |
| 03 CORRIDOR | | | | | | |
| 04 MECH. EQUIP. | | | | | | |
| 05 CENT. COOLING | | | | | | |
| 06 TRANS. VAULT | | | | | | |
| 07 TRANS. VAULT | | | | | | |
| 08 TRIENT STAIRS | | | | | | WIDE MESH PART PAINTED |
| 09 100' STAIRS | | | | | | |
| 10 ELEV. PIT | | | | | | SMALL CONCRETE PAINTED |
| 11 TUNNEL | | | | | | |

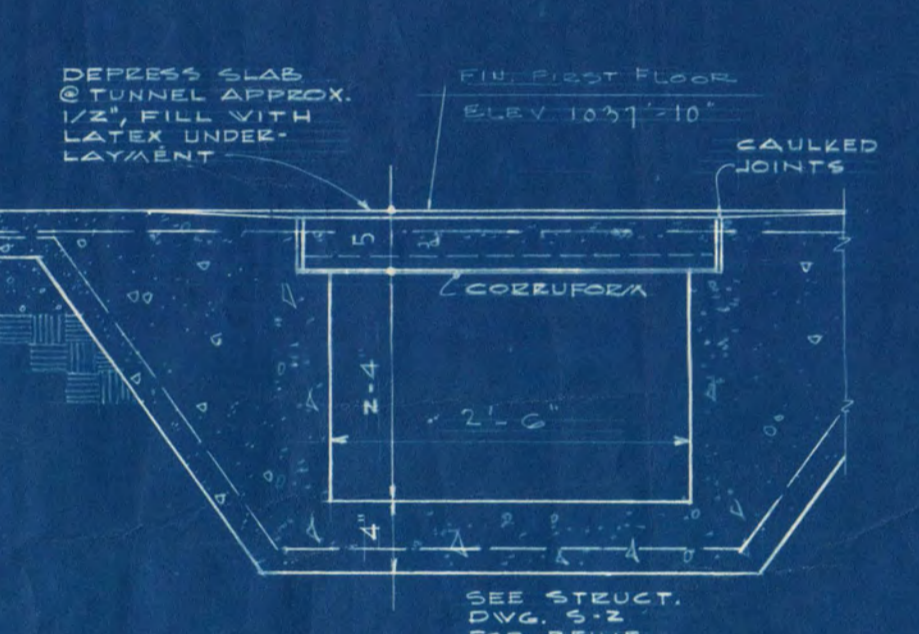
DOOR SCHEDULES

| MARK | DOOR SIZE | TYPE | FRAME | GLASS | TRANSOM | REMARKS |
|------|-------------------------|------|-------|-------|---------|------------------------|
| D | 3'-0" x 6'-8" x 1 3/4" | H.M. | H.M. | | None | Wide mesh part painted |
| F | 3'-0" x 6'-8" x 1 3/4" | H.M. | H.M. | | None | Wide mesh part painted |
| K | 3'-0" x 6'-8" x 1 3/4" | H.M. | H.M. | | None | Wide mesh part painted |
| L | 3'-0" x 6'-8" x 1 3/4" | H.M. | H.M. | | None | Wide mesh part painted |
| M | 3'-0" x 6'-8" x 1 3/4" | H.M. | H.M. | | None | Wide mesh part painted |
| U | 2'-8" x 3'-10" x 1 3/4" | H.M. | H.M. | | None | Wide mesh part painted |
| V | 2'-8" x 3'-10" x 1 3/4" | H.M. | H.M. | | None | Wide mesh part painted |

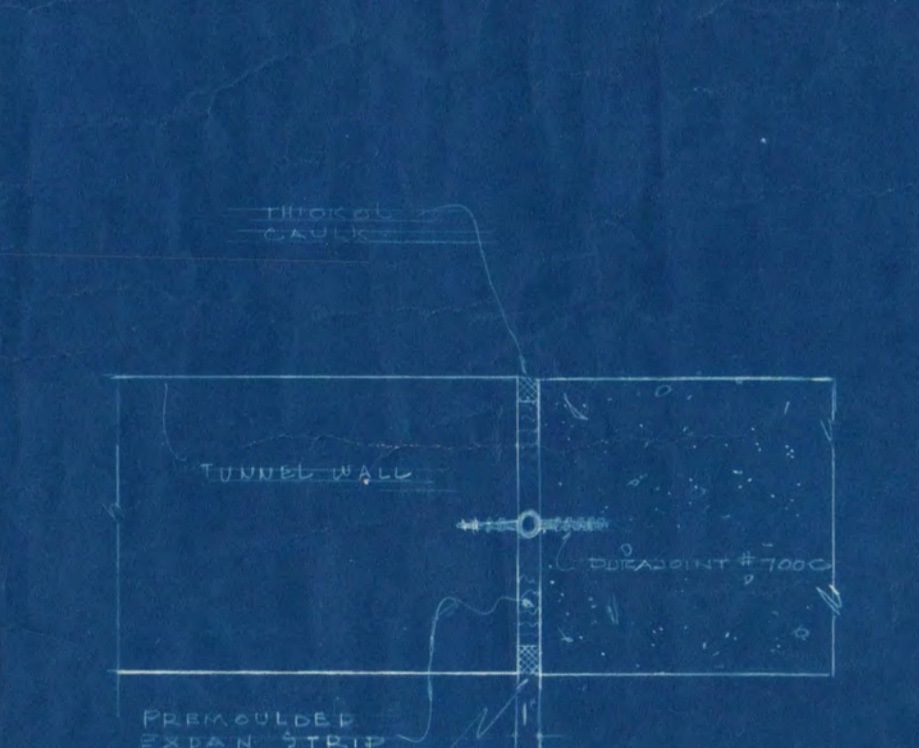


DOOR TYPES

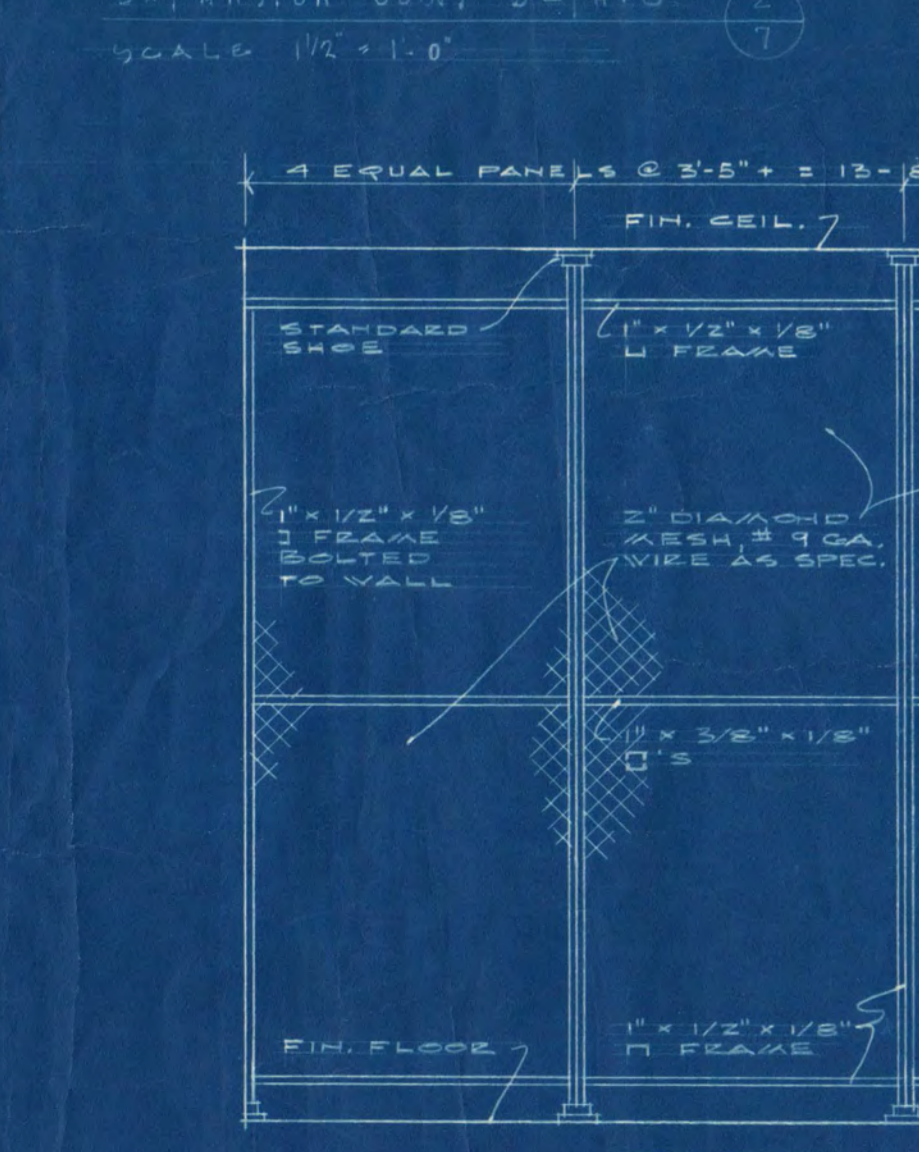
SCALE: 3/4" = 1'-0"
NOTES: ALL FRAMES WITH CONCRETE SET



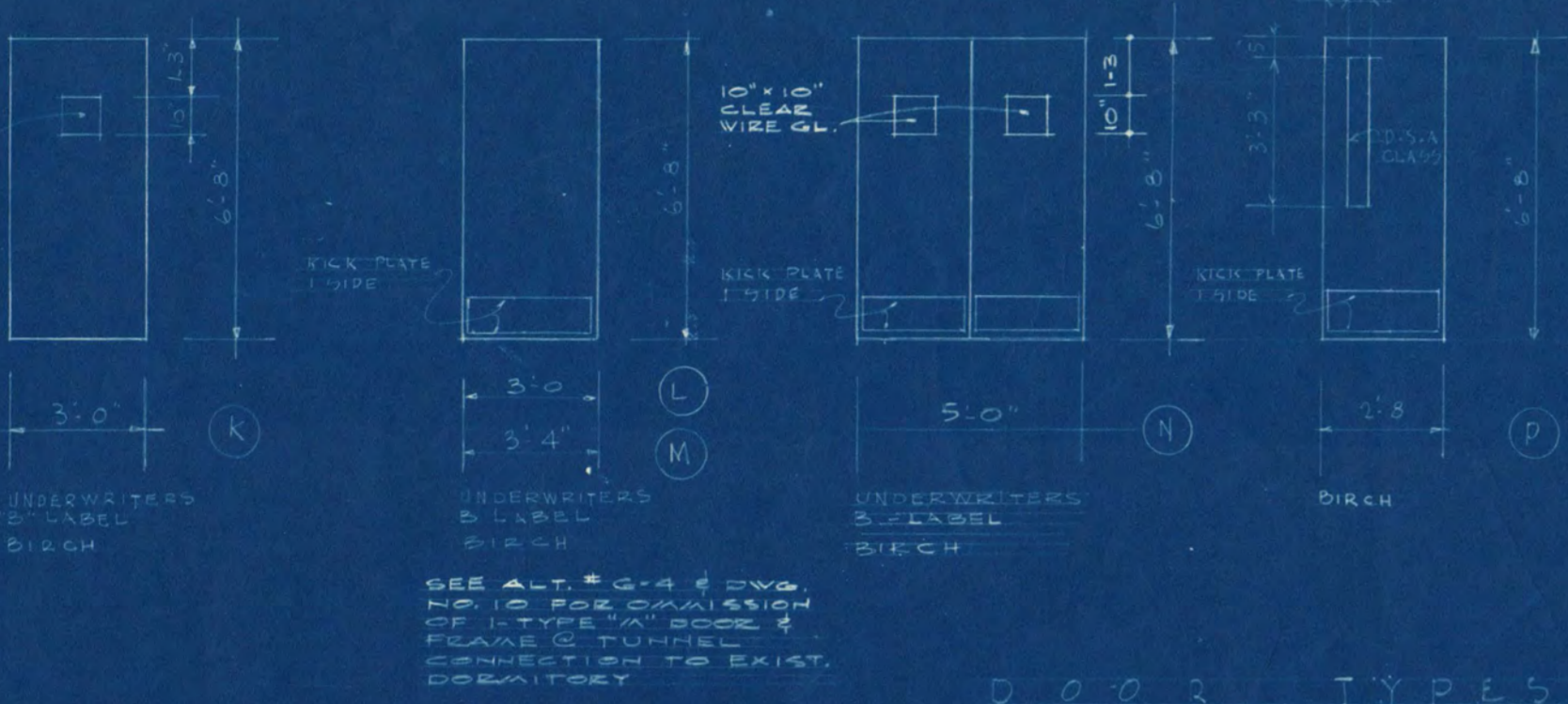
CROSS SECTION TUNNEL APPROACH



EXPANSION JOINT DETAIL



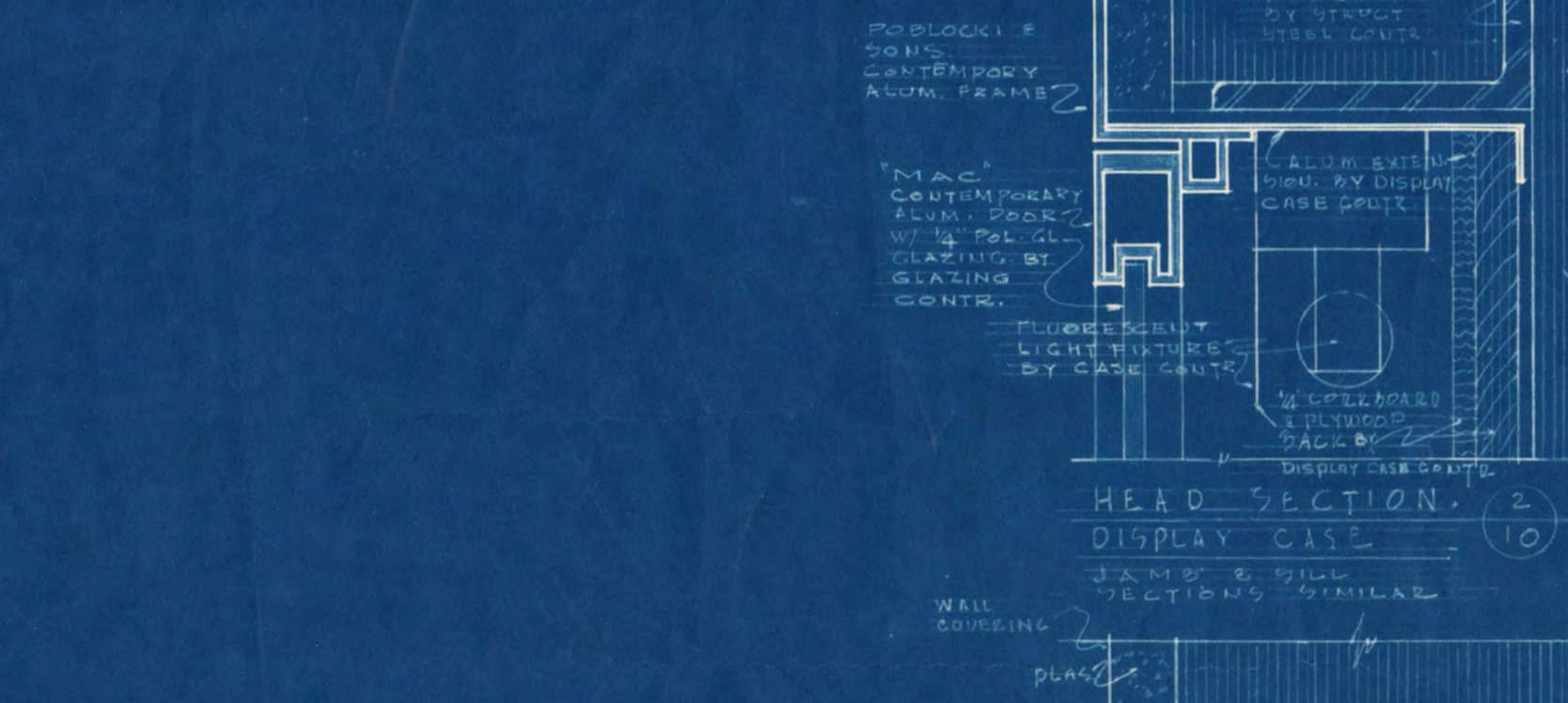
WIRE MESH PARTITION DETAIL



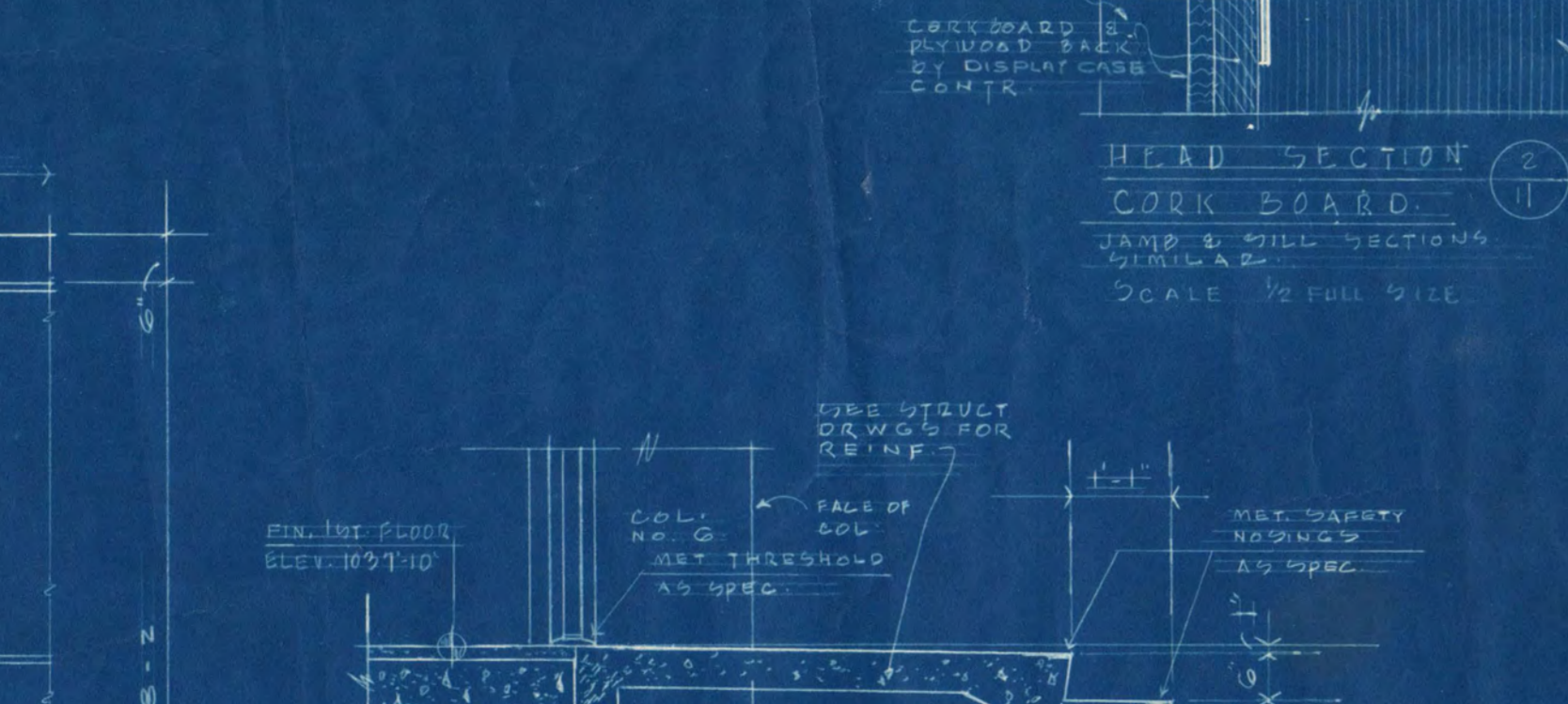
HEAD SECTION



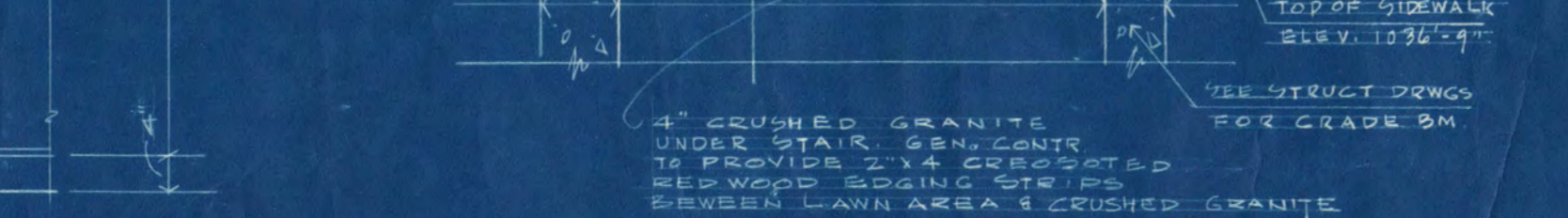
JAMB SECTION



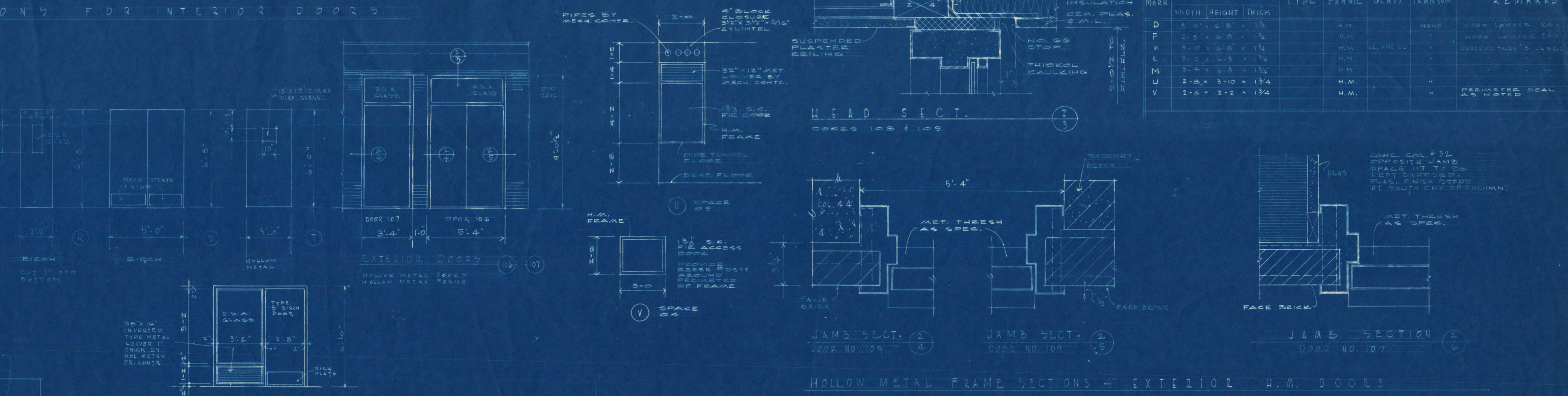
HEAD SECTION DISPLAY CASE



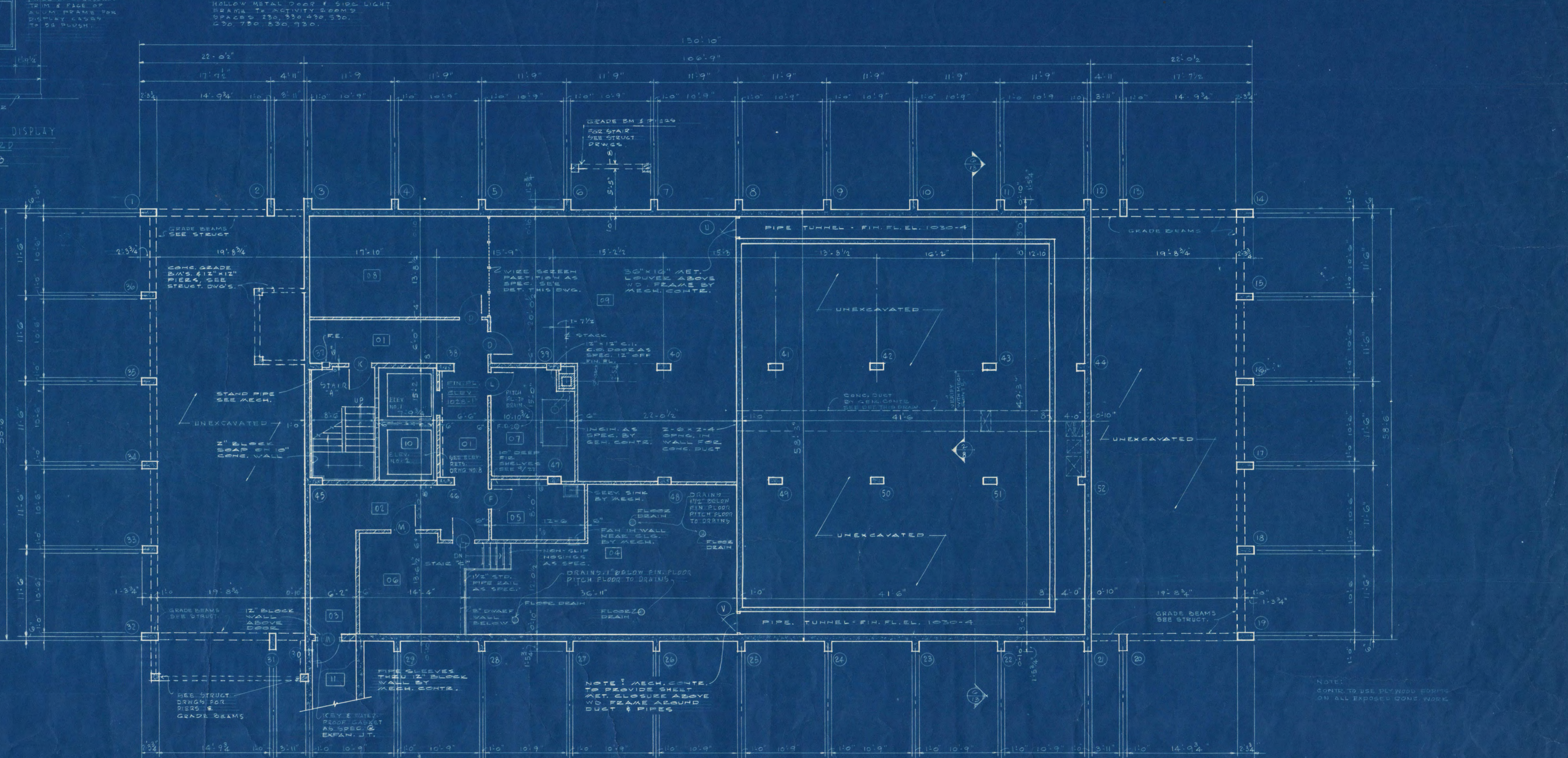
HEAD SECTION CORK BOARD



SECTION THRU STEPS & PLATFORM @ DOOR 105



HOLLOW METAL FRAME SECTIONS - EXTERIOR H.M. DOORS
SCALE: 3/4" = 1'-0"



BASEMENT FLOOR PLAN

SCALE: 3/8" = 1'-0"



DETAIL OF EXPOSED PRECAST CONCRETE COLUMN

TYPICAL DETAIL VERTICAL MORTAR JOINT BETWEEN CONC. COL. & ST. WT. MASON. BLOCK

DOMINATORY ST. CLOUD STATE COLLEGE ST. CLOUD, MINNESOTA

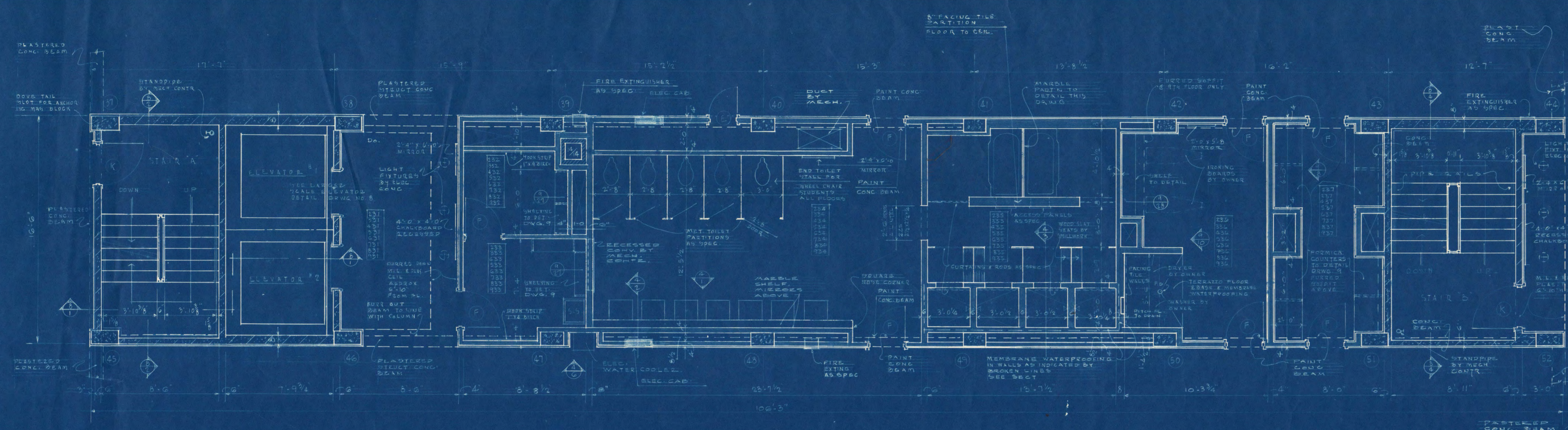
JACKSON-HAHN ASSOCIATES, INC.
ARCHITECTS

28-6501
BY: [Signature]
CHECKED BY: [Signature]
DATE: [Date]

BASEMENT FLOOR PLAN, 1962
TYPICAL MISC. DETAILS

APPROVED BY: [Signature]
DATE: [Date]

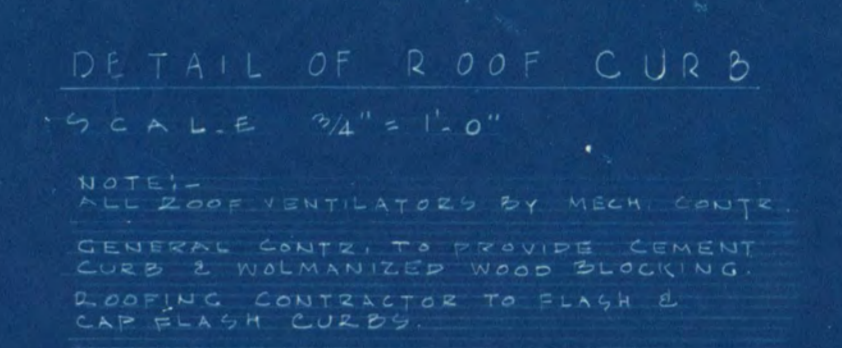
F-1A



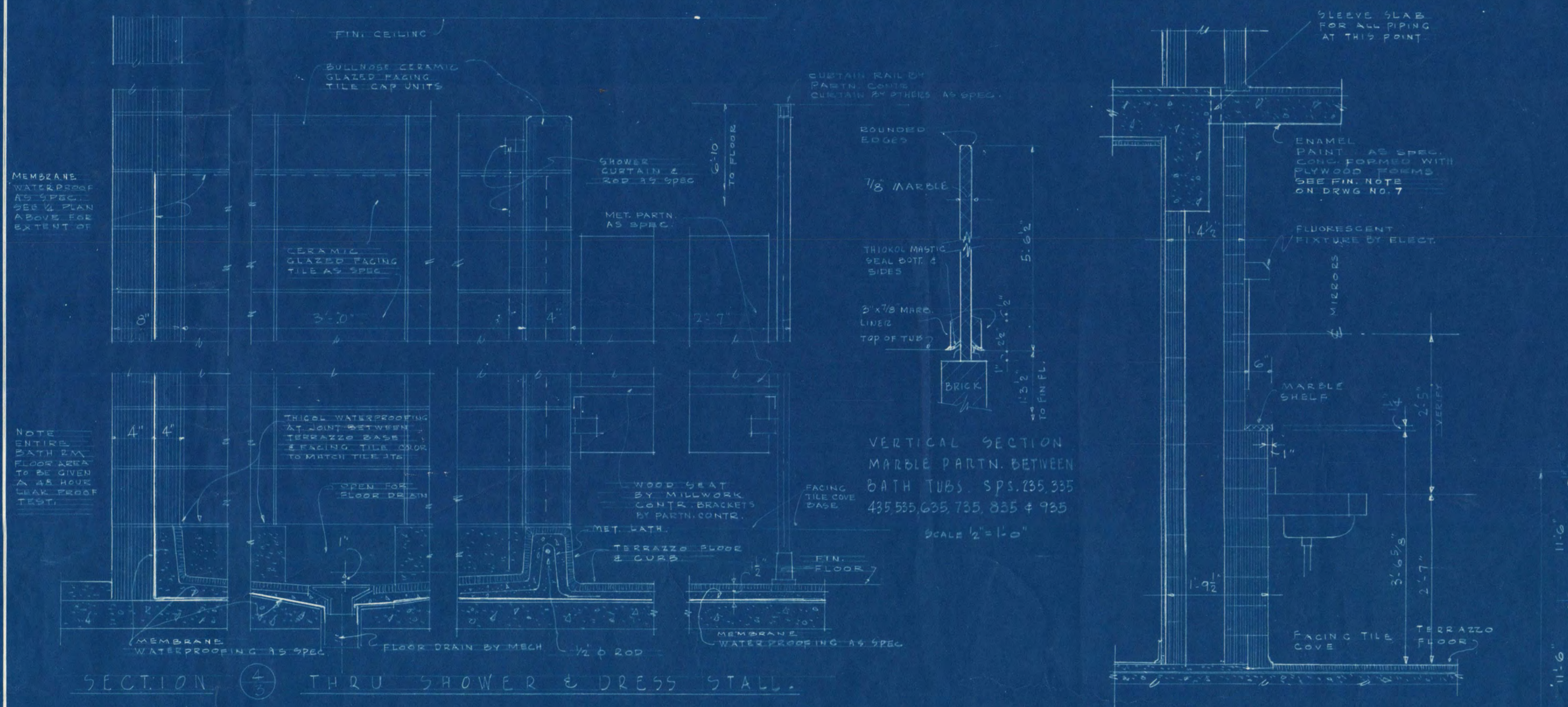
ROOM & SPACE FINISH SCHEDULE

| ROOM & SPACE | FLOORING | BASE | WALLS | CEILING | FIXTURES | NOTES |
|---|----------|------|-------|---------|----------|-------|
| 201-204, 206, 207, 208, 209, 210, 211, 212, 213, 214, 215, 216, 217, 218, 219, 220, 221, 222, 223, 224, 225, 226, 227, 228, 229, 230, 231, 232, 233, 234, 235, 236, 237, 238, 239, 240, 241, 242, 243, 244, 245, 246, 247, 248, 249, 250, 251, 252, 253, 254, 255, 256, 257, 258, 259, 260, 261, 262, 263, 264, 265, 266, 267, 268, 269, 270, 271, 272, 273, 274, 275, 276, 277, 278, 279, 280, 281, 282, 283, 284, 285, 286, 287, 288, 289, 290, 291, 292, 293, 294, 295, 296, 297, 298, 299, 300, 301, 302, 303, 304, 305, 306, 307, 308, 309, 310, 311, 312, 313, 314, 315, 316, 317, 318, 319, 320, 321, 322, 323, 324, 325, 326, 327, 328, 329, 330, 331, 332, 333, 334, 335, 336, 337, 338, 339, 340, 341, 342, 343, 344, 345, 346, 347, 348, 349, 350, 351, 352, 353, 354, 355, 356, 357, 358, 359, 360, 361, 362, 363, 364, 365, 366, 367, 368, 369, 370, 371, 372, 373, 374, 375, 376, 377, 378, 379, 380, 381, 382, 383, 384, 385, 386, 387, 388, 389, 390, 391, 392, 393, 394, 395, 396, 397, 398, 399, 400, 401, 402, 403, 404, 405, 406, 407, 408, 409, 410, 411, 412, 413, 414, 415, 416, 417, 418, 419, 420, 421, 422, 423, 424, 425, 426, 427, 428, 429, 430, 431, 432, 433, 434, 435, 436, 437, 438, 439, 440, 441, 442, 443, 444, 445, 446, 447, 448, 449, 450, 451, 452, 453, 454, 455, 456, 457, 458, 459, 460, 461, 462, 463, 464, 465, 466, 467, 468, 469, 470, 471, 472, 473, 474, 475, 476, 477, 478, 479, 480, 481, 482, 483, 484, 485, 486, 487, 488, 489, 490, 491, 492, 493, 494, 495, 496, 497, 498, 499, 500, 501, 502, 503, 504, 505, 506, 507, 508, 509, 510, 511, 512, 513, 514, 515, 516, 517, 518, 519, 520, 521, 522, 523, 524, 525, 526, 527, 528, 529, 530, 531, 532, 533, 534, 535, 536, 537, 538, 539, 540, 541, 542, 543, 544, 545, 546, 547, 548, 549, 550, 551, 552, 553, 554, 555, 556, 557, 558, 559, 560, 561, 562, 563, 564, 565, 566, 567, 568, 569, 570, 571, 572, 573, 574, 575, 576, 577, 578, 579, 580, 581, 582, 583, 584, 585, 586, 587, 588, 589, 590, 591, 592, 593, 594, 595, 596, 597, 598, 599, 600, 601, 602, 603, 604, 605, 606, 607, 608, 609, 610, 611, 612, 613, 614, 615, 616, 617, 618, 619, 620, 621, 622, 623, 624, 625, 626, 627, 628, 629, 630, 631, 632, 633, 634, 635, 636, 637, 638, 639, 640, 641, 642, 643, 644, 645, 646, 647, 648, 649, 650, 651, 652, 653, 654, 655, 656, 657, 658, 659, 660, 661, 662, 663, 664, 665, 666, 667, 668, 669, 670, 671, 672, 673, 674, 675, 676, 677, 678, 679, 680, 681, 682, 683, 684, 685, 686, 687, 688, 689, 690, 691, 692, 693, 694, 695, 696, 697, 698, 699, 700, 701, 702, 703, 704, 705, 706, 707, 708, 709, 710, 711, 712, 713, 714, 715, 716, 717, 718, 719, 720, 721, 722, 723, 724, 725, 726, 727, 728, 729, 730, 731, 732, 733, 734, 735, 736, 737, 738, 739, 740, 741, 742, 743, 744, 745, 746, 747, 748, 749, 750, 751, 752, 753, 754, 755, 756, 757, 758, 759, 760, 761, 762, 763, 764, 765, 766, 767, 768, 769, 770, 771, 772, 773, 774, 775, 776, 777, 778, 779, 780, 781, 782, 783, 784, 785, 786, 787, 788, 789, 790, 791, 792, 793, 794, 795, 796, 797, 798, 799, 800, 801, 802, 803, 804, 805, 806, 807, 808, 809, 810, 811, 812, 813, 814, 815, 816, 817, 818, 819, 820, 821, 822, 823, 824, 825, 826, 827, 828, 829, 830, 831, 832, 833, 834, 835, 836, 837, 838, 839, 840, 841, 842, 843, 844, 845, 846, 847, 848, 849, 850, 851, 852, 853, 854, 855, 856, 857, 858, 859, 860, 861, 862, 863, 864, 865, 866, 867, 868, 869, 870, 871, 872, 873, 874, 875, 876, 877, 878, 879, 880, 881, 882, 883, 884, 885, 886, 887, 888, 889, 890, 891, 892, 893, 894, 895, 896, 897, 898, 899, 900, 901, 902, 903, 904, 905, 906, 907, 908, 909, 910, 911, 912, 913, 914, 915, 916, 917, 918, 919, 920, 921, 922, 923, 924, 925, 926, 927, 928, 929, 930, 931, 932, 933, 934, 935, 936, 937, 938, 939, 940, 941, 942, 943, 944, 945, 946, 947, 948, 949, 950, 951, 952, 953, 954, 955, 956, 957, 958, 959, 960, 961, 962, 963, 964, 965, 966, 967, 968, 969, 970, 971, 972, 973, 974, 975, 976, 977, 978, 979, 980, 981, 982, 983, 984, 985, 986, 987, 988, 989, 990, 991, 992, 993, 994, 995, 996, 997, 998, 999, 1000 | | | | | | |

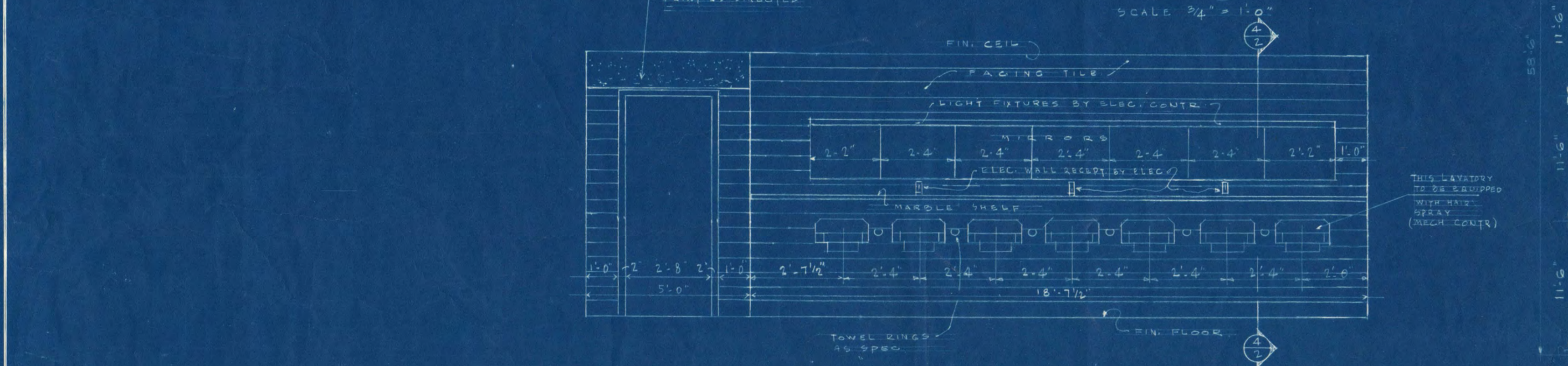
PART FLOOR PLAN 2ND 3RD 4TH 5TH 6TH 7TH 8TH & 9TH FLOORS - TYPICAL CENTER UTILITY CORE FLOOR ARRANGEMENT. SCALE 1/4" = 1'-0"



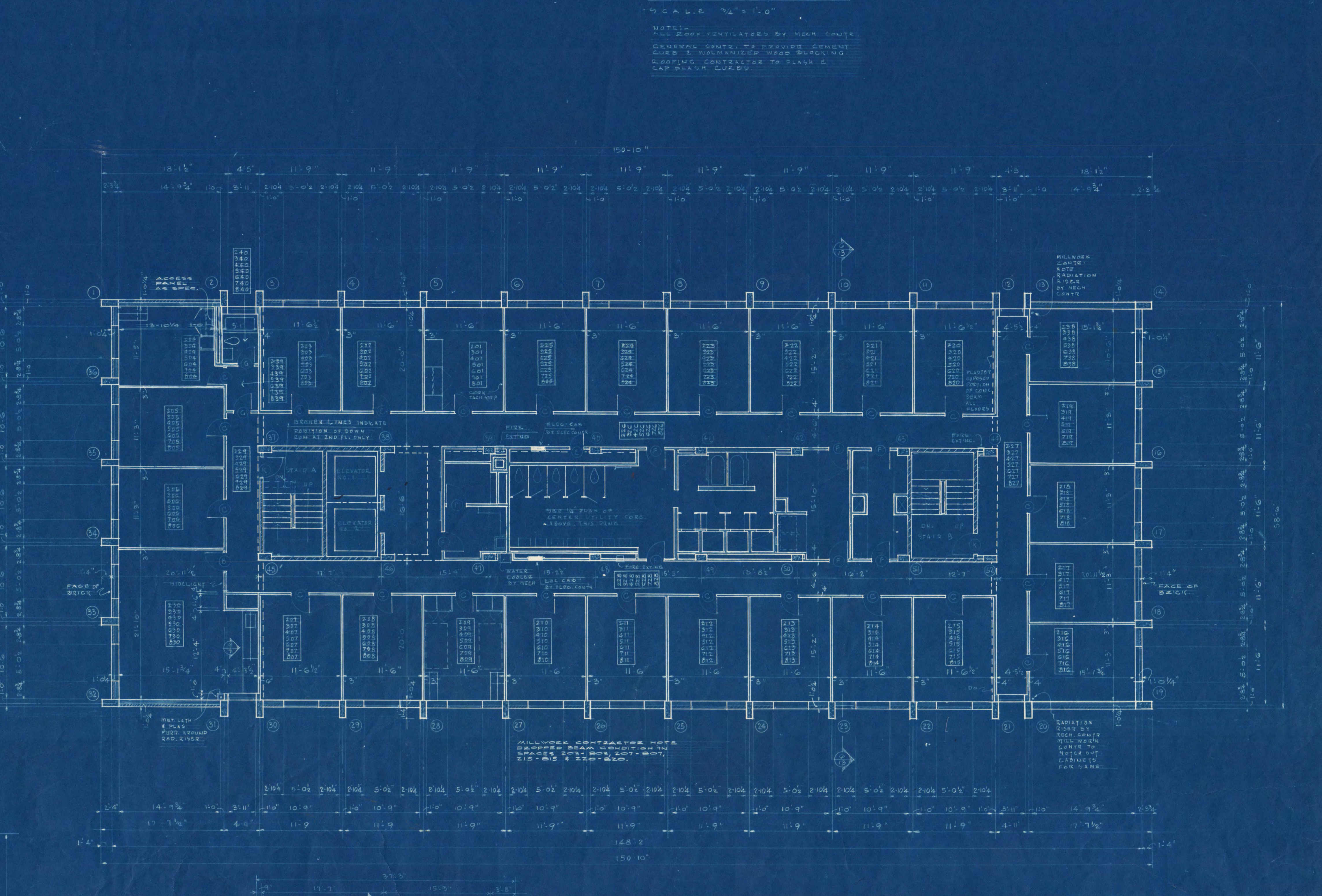
DETAIL OF ROOF CURB. SCALE 3/4" = 1'-0"



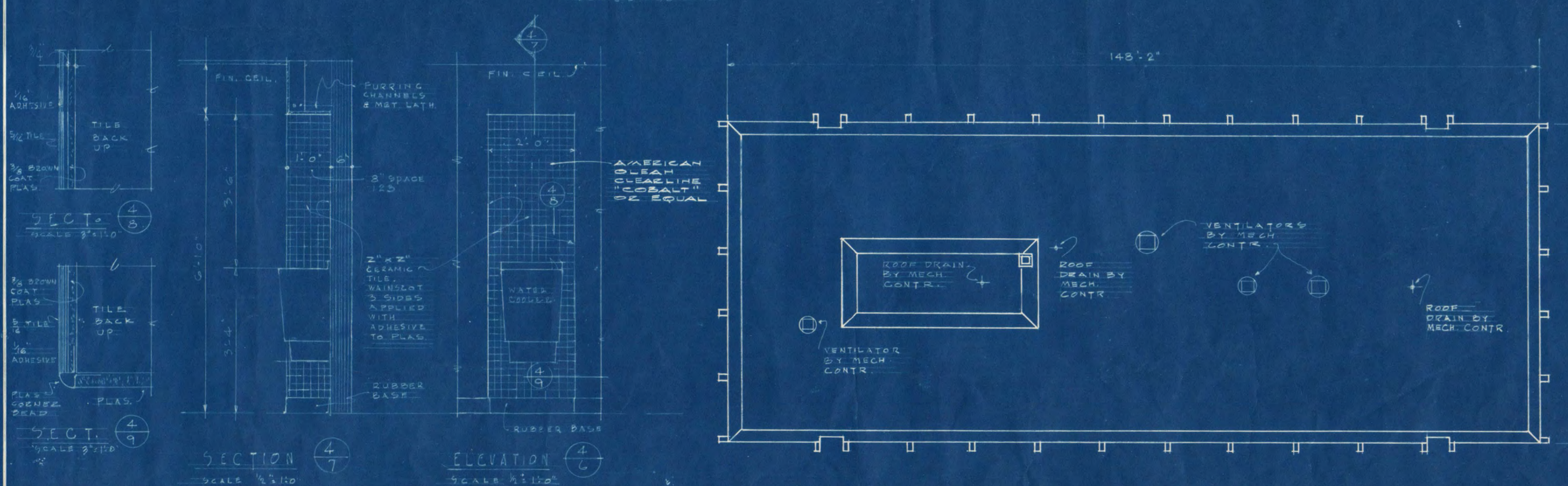
SECTION THROUGH SHOWER & DRESS STALL. SCALE 1/2" = 1'-0"



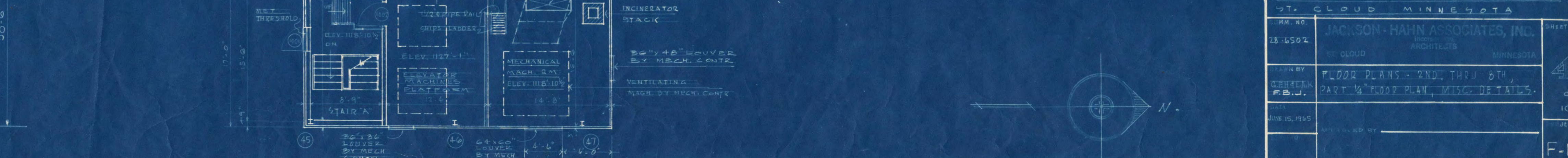
SECTION LAVATORY WALL. SCALE 3/4" = 1'-0"



FLOOR PLAN 2ND 3RD 4TH 5TH 6TH 7TH & 8TH FLOORS. SCALE 1/8" = 1'-0"



DETAILS FOR WATER COUPLER RECESS SPACES. SCALE 3/4" = 1'-0"



ROOF PLAN. SCALE 1/8" = 1'-0"

DORMITORY
ST. CLOUD STATE COLLEGE
ST. CLOUD, MINNESOTA

JACKSON-HAHN ASSOCIATES, INC.
ARCHITECTS

FLOOR PLANS - 2ND THRU 8TH
PART OF FLOOR PLAN, MISC. DETAILS.

DATE: 10/19/55

APPARED BY: _____

SHEET NO. 10 OF 10

F-1A

TOP OF FINISH FLOOR
ELEV. 1135'-0"

TOP OF FINISH FLOOR
ELEV. 1135'-0"

FIN. 5TH FLOOR
ELEV. 1125'-0"

FIN. 4TH FLOOR
ELEV. 1115'-0"

FIN. 3RD FLOOR
ELEV. 1105'-0"

FIN. 2ND FLOOR
ELEV. 1095'-0"

FIN. 1ST FLOOR
ELEV. 1085'-0"

FIN. 0TH FLOOR
ELEV. 1075'-0"

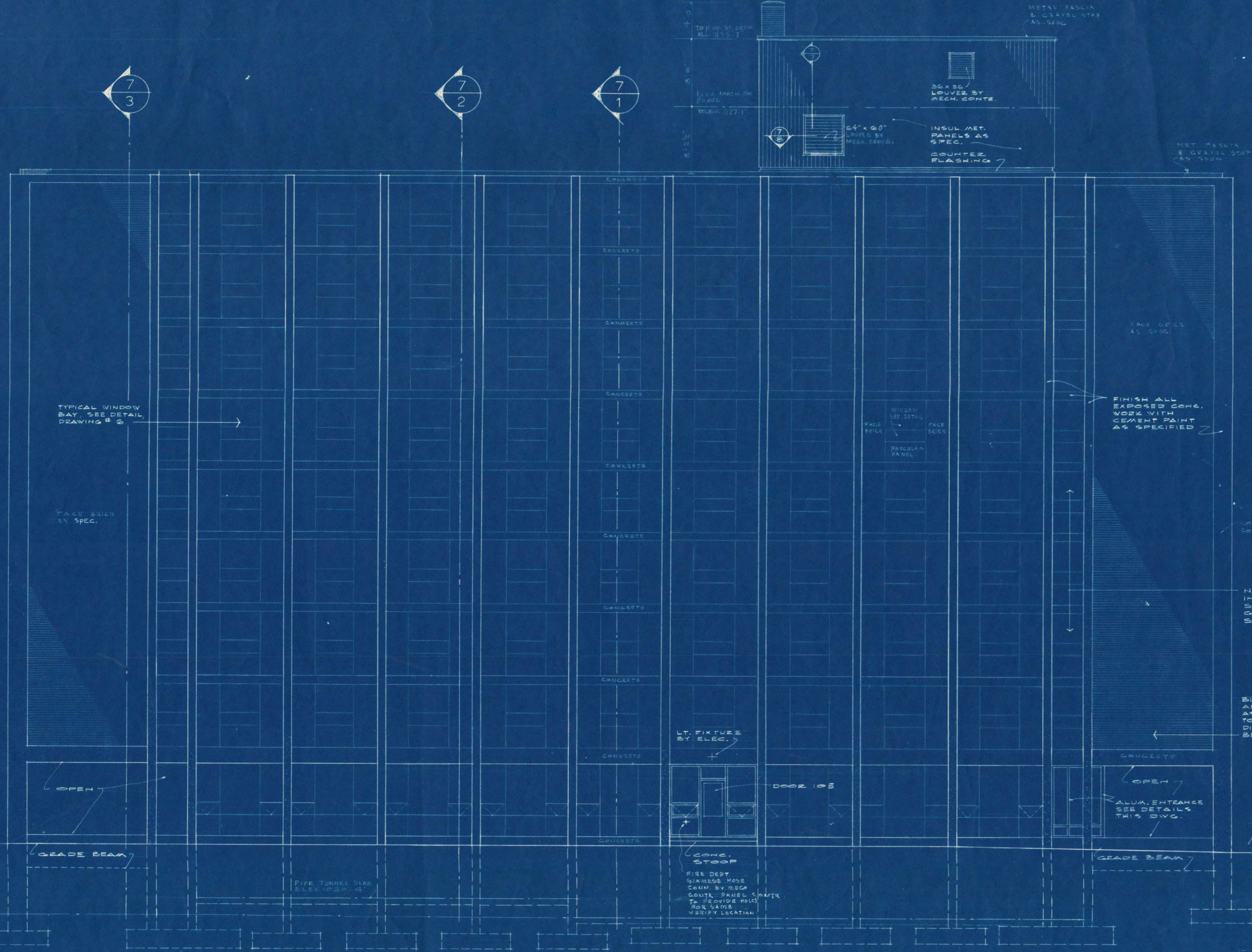
FIN. 1ST FLOOR
ELEV. 1065'-0"

FIN. 2ND FLOOR
ELEV. 1055'-0"

FIN. 3RD FLOOR
ELEV. 1045'-0"

FIN. 4TH FLOOR
ELEV. 1035'-0"

FIN. 5TH FLOOR
ELEV. 1025'-0"



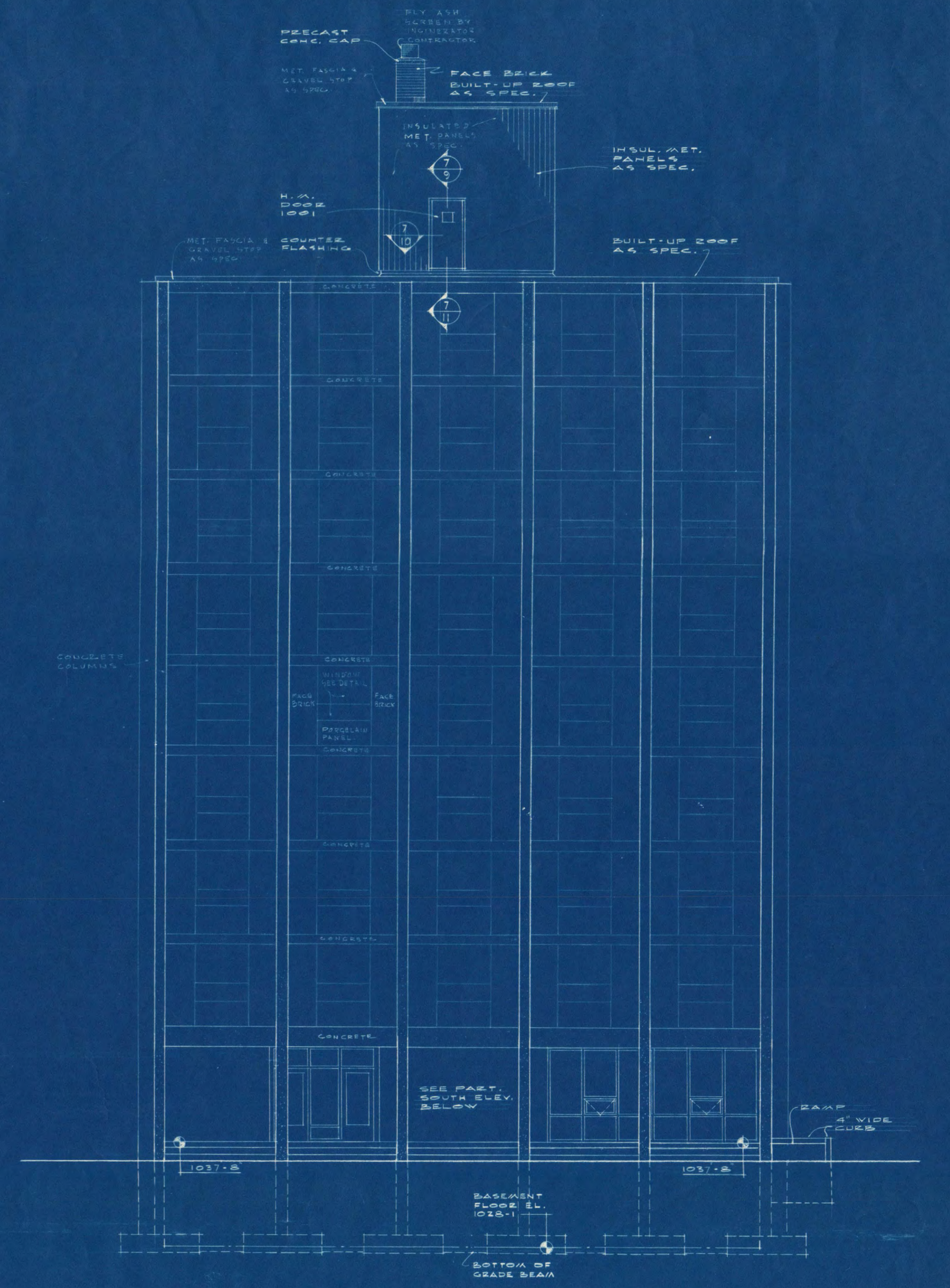
WEST ELEVATION SCALE 3/8"=1'-0"

NOTE: SEE STRUCTURAL DRAWINGS FOR FOOTING SEE 4 ELEVATION

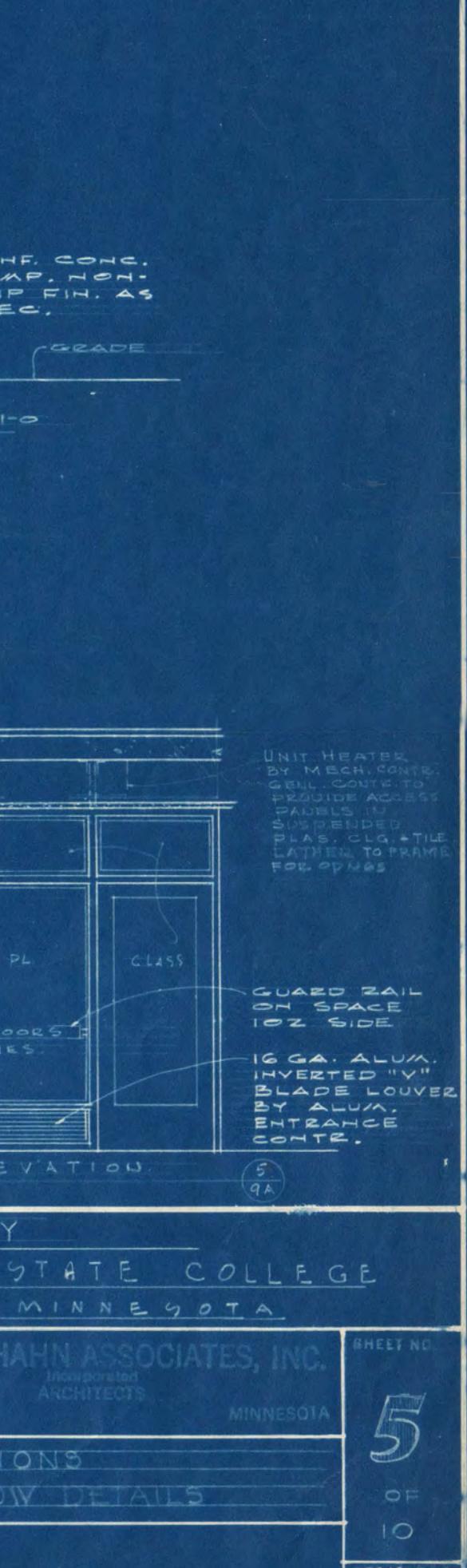
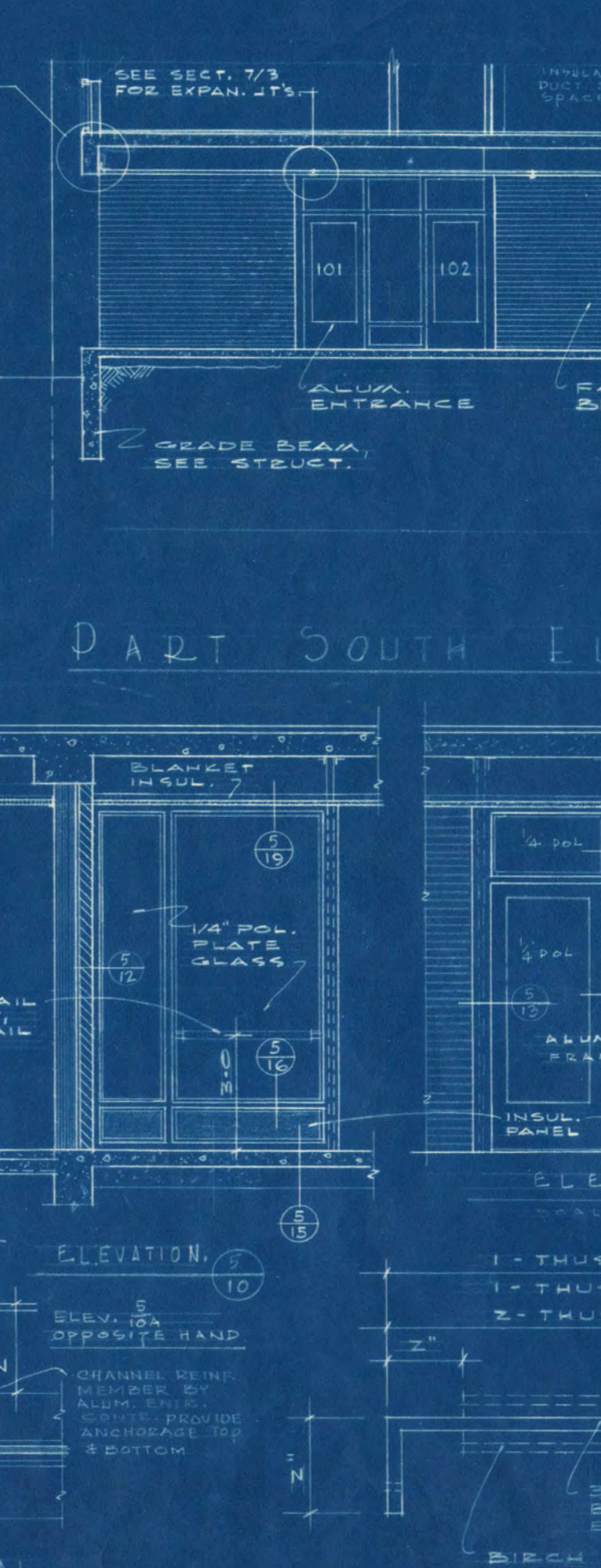
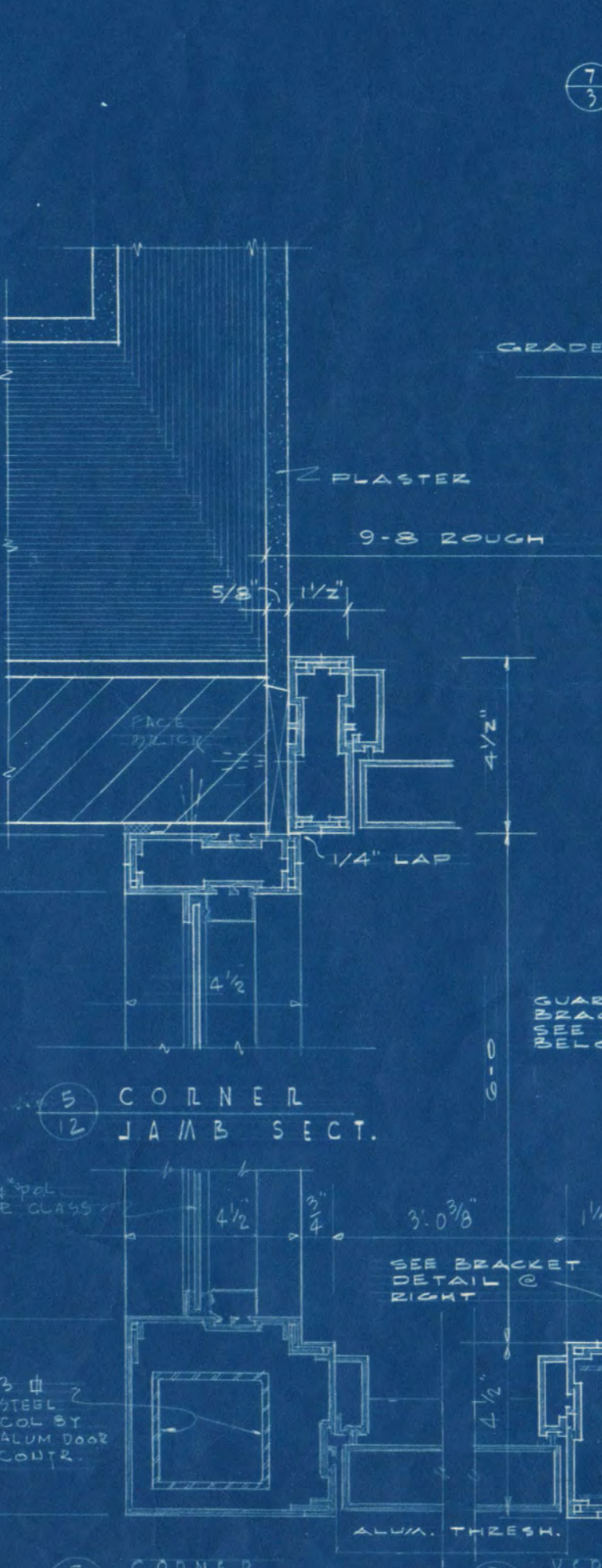
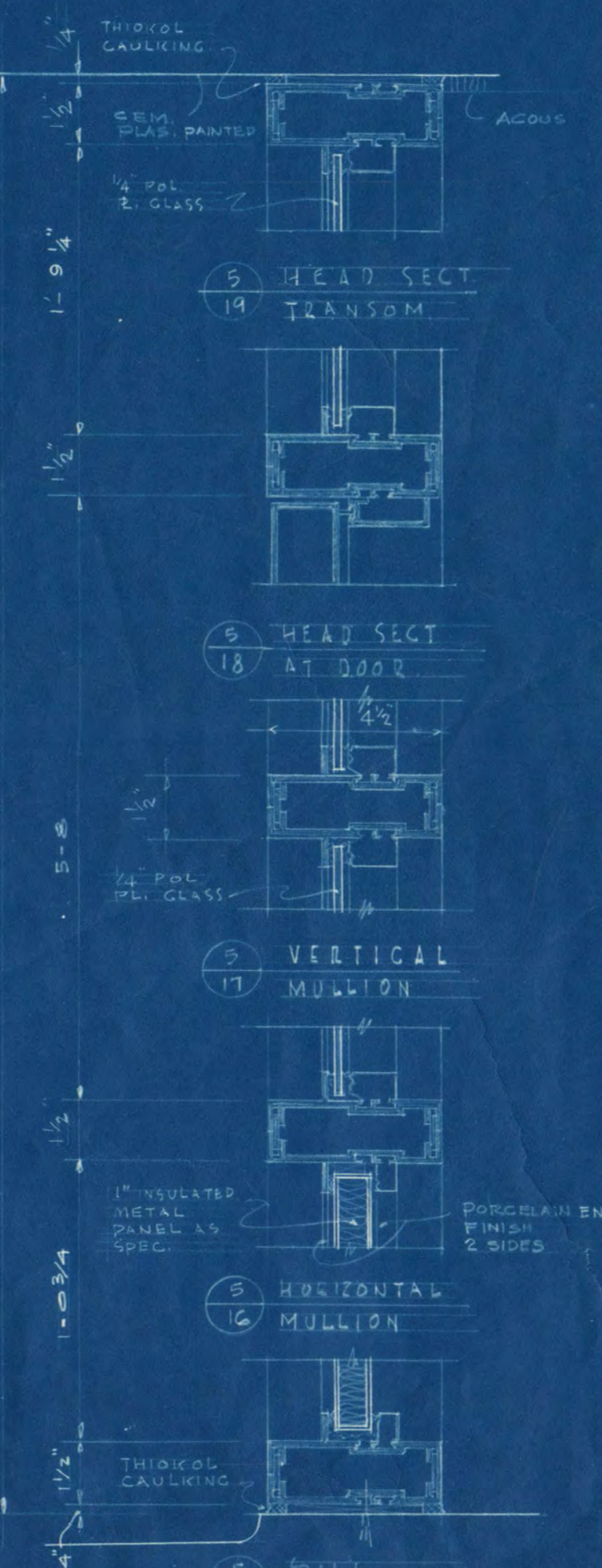
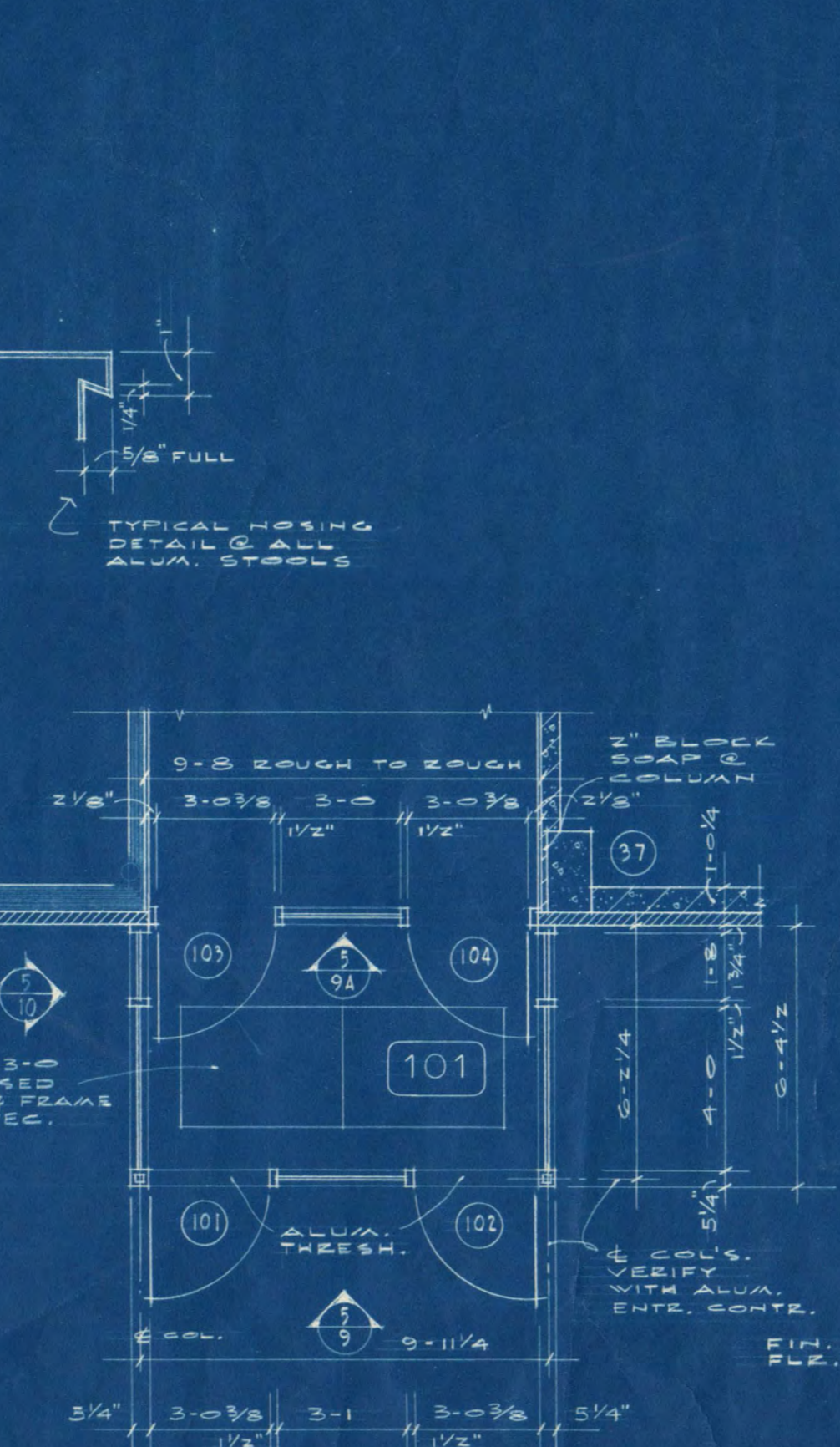
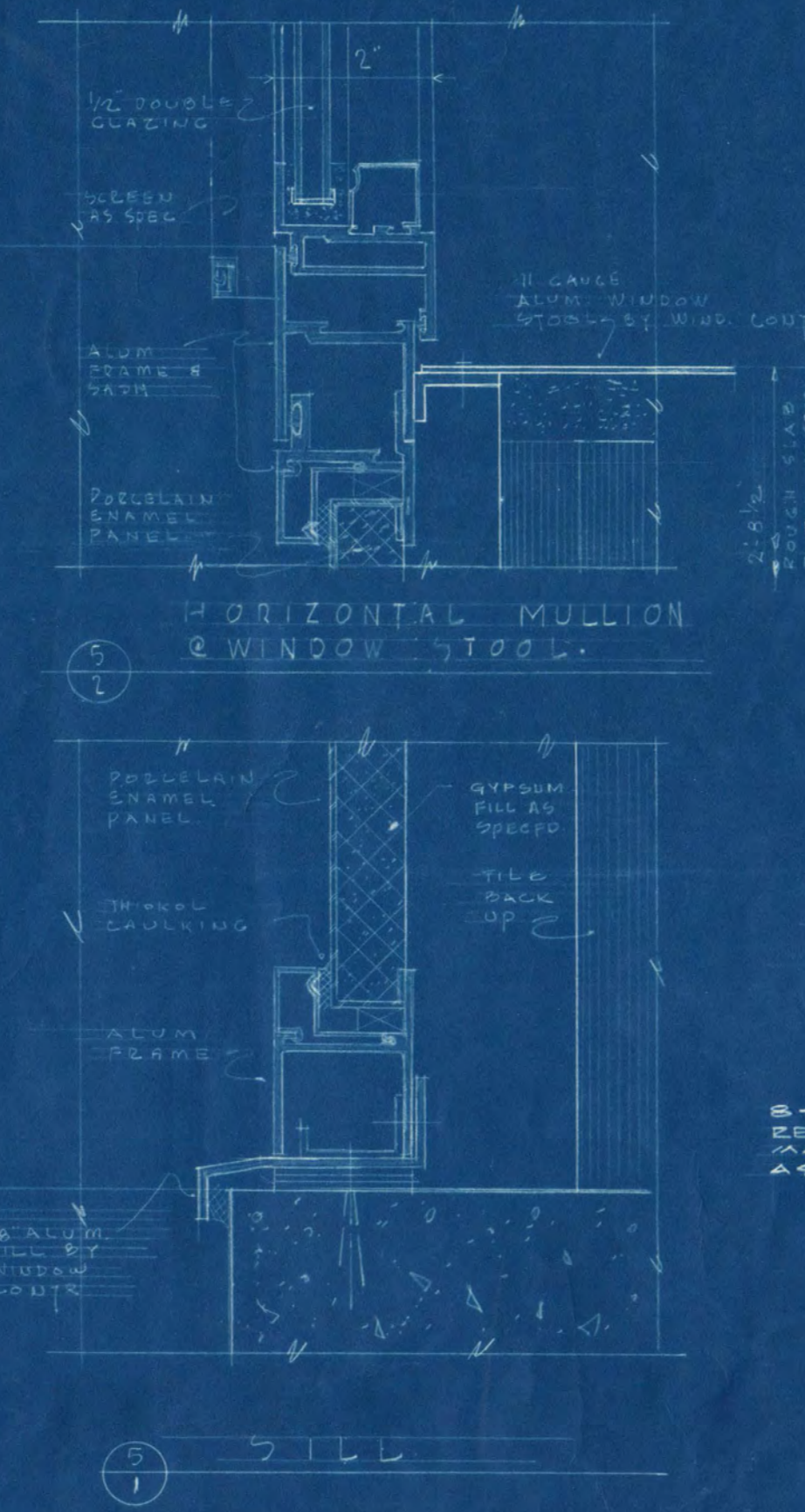
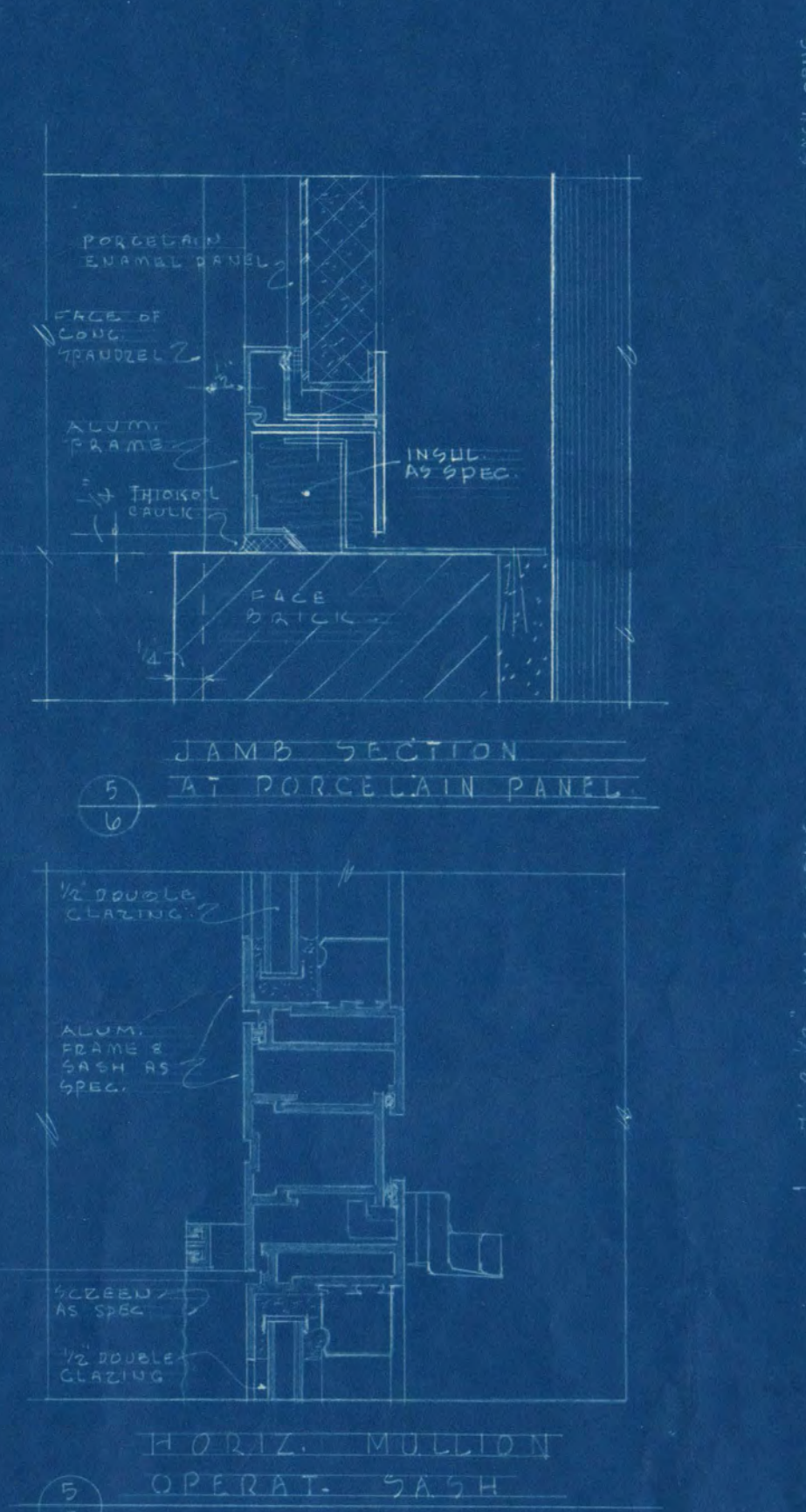
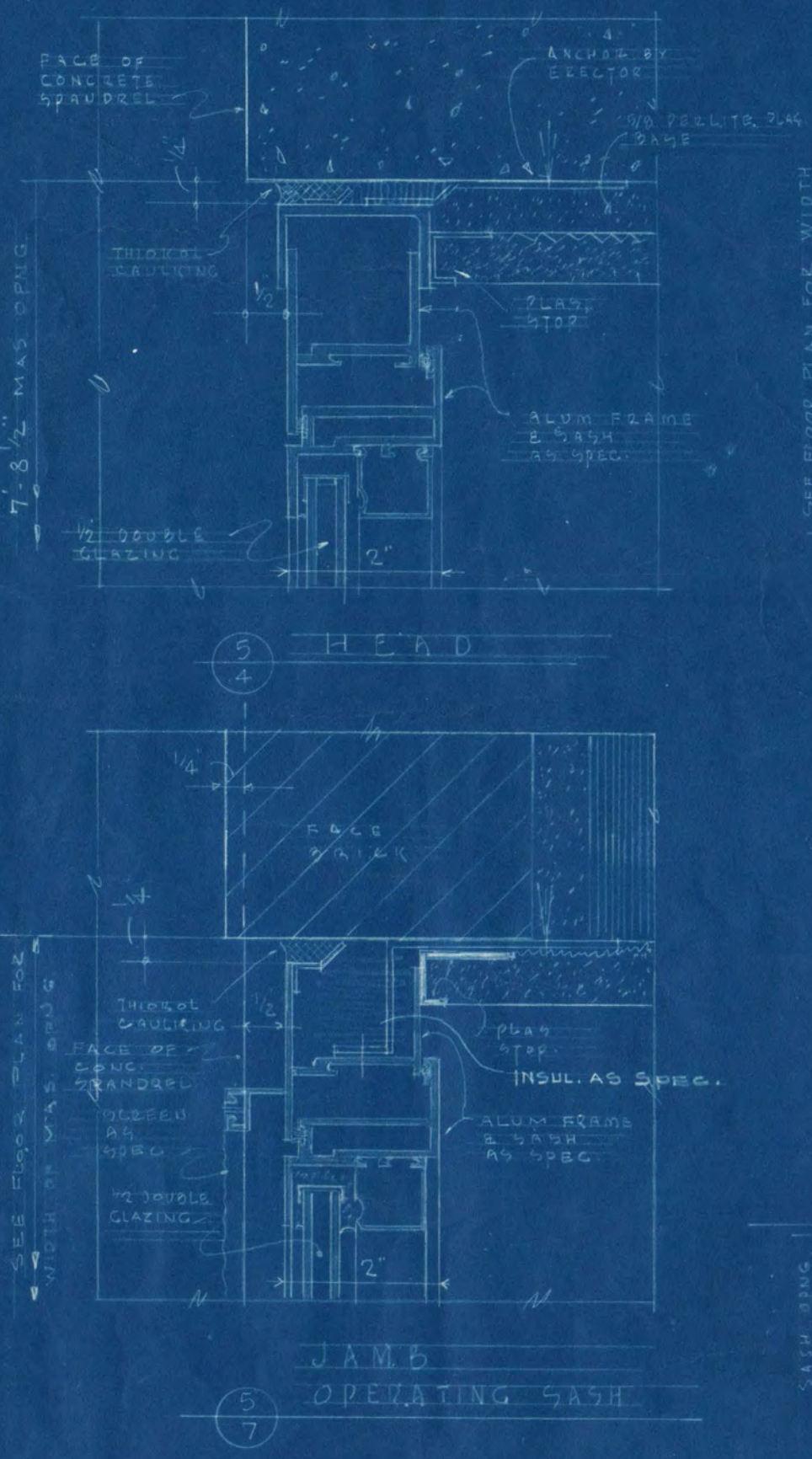
NOTE: ALL WINDOWS IN THIS BAY TO BE SHOWN SHARED PANESQUE SPACES SEE TRU 340

BLACK ENAMELED ALUM. LETTERS 2" HIGH AS SPECIFIED TO BE SET AS DIRECTED ON BRICK PANEL

SPRUE PLAZA SEE SITE PLAN FOR EXTENT



SOUTH ELEVATION SCALE 3/8"=1'-0"



TYPICAL WINDOW FRAME & SASH SECTIONS - DORMITORY STUDENT ROOMS
SCALE 3/8"=1'-0" SEE TRU 340 SCALE TYPICAL WINDOW & BRICK PANELS SEE 3 & 4 ELEVATION POINTS

ALUMINUM ENTRANCE DETAILS - VESTIBULE SPACE NO. 101 - SOUTH ELEVATION

| | | | |
|-------------------------|--|-------------------------------|--|
| DORMITORY | | JACKSON-HAHN ASSOCIATES, INC. | |
| ST. CLOUD STATE COLLEGE | | ST. CLOUD, MINNESOTA | |
| ST. CLOUD, MINNESOTA | | PROJECT NO. 5 | |
| ELEVATIONS | | OF 10 | |
| WINDOW DETAILS | | F-1A | |

