

SEE FIRST FLOOR PLAN UNIT A

FIRST FLOOR PLAN V UNIT B 1/8"=1'-0"

**EDUCATION BUILDING ST. CLOUD STATE COLLEGE**

TRAYNOR, HERMANSON & HAHN ARCHITECTS INC.  
 ST. CLOUD, MINNESOTA  
 STRUCTURAL ENGINEERS JOHNSTON & SAHLMAN, INC. MPLS., MINN.  
 CONSULTING ENGINEERS GAUSMAN & MOORE, INC. ST. PAUL, MINN.

SHEET NO.  
**M-9**  
 OF 15

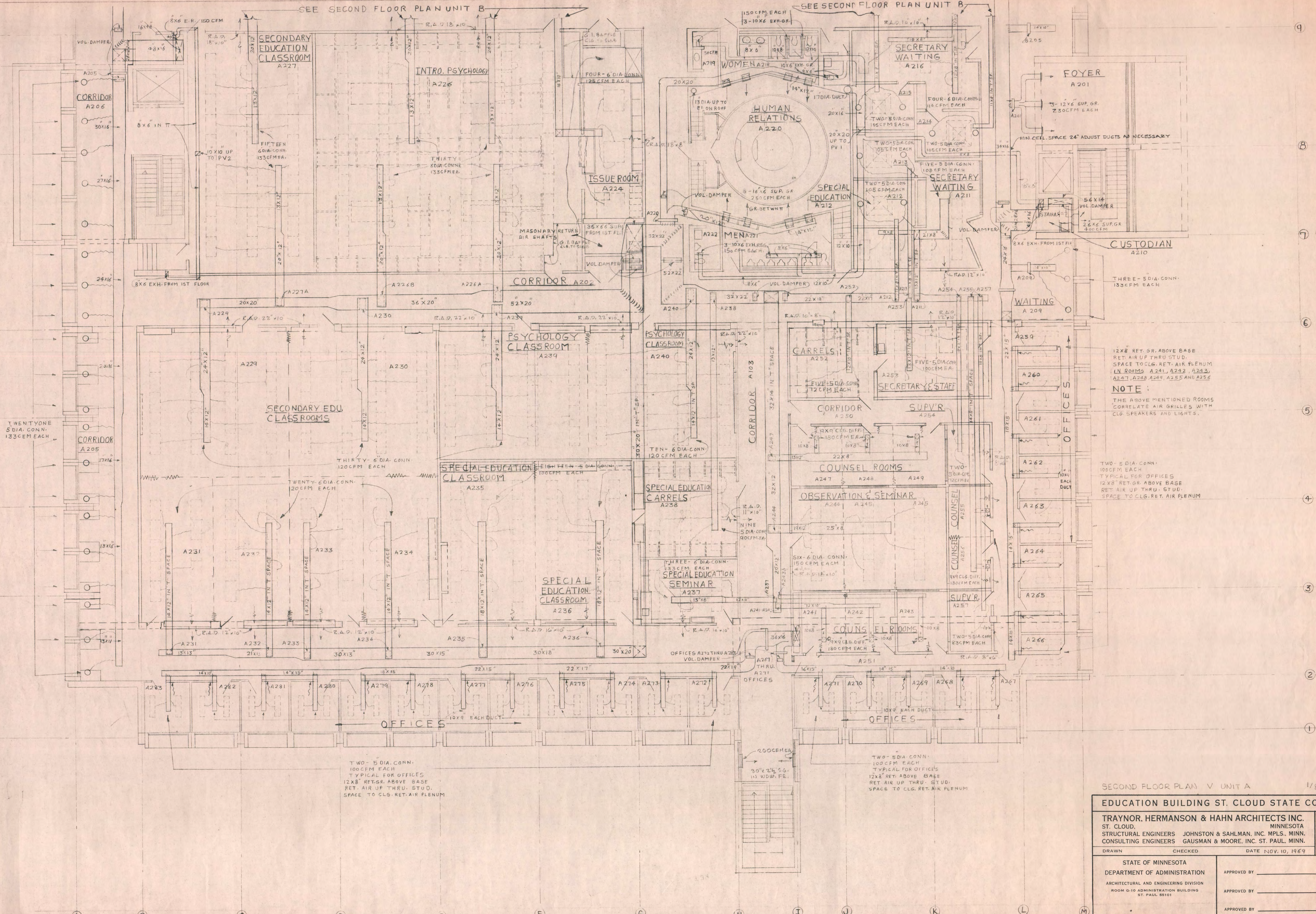
DRAWN \_\_\_\_\_ CHECKED \_\_\_\_\_ DATE NOV. 10, 1964

STATE OF MINNESOTA  
 DEPARTMENT OF ADMINISTRATION  
 ARCHITECTURAL AND ENGINEERING DIVISION  
 ROOM G-10 ADMINISTRATION BUILDING  
 ST. PAUL 55101

APPROVED BY \_\_\_\_\_  
 APPROVED BY \_\_\_\_\_  
 APPROVED BY \_\_\_\_\_

STATE PROJECT NO. 6360150  
 COMMISSIONER OF ADMINISTRATION  
 AN AUTHORIZED SIGNATURE





NOTE:  
THE ABOVE MENTIONED ROOMS  
CORRELATE AIR GRILLES WITH  
CLG. SPEAKERS AND LIGHTS.

TWO - 5 DIA. CONN.  
100CFM EACH  
TYPICAL FOR OFFICES  
12' X 8' RET. GR. ABOVE BASE  
RET. AIR UP THRU. STUD.  
SPACE TO CLG. RET. AIR PLENUM

TWO - 5 DIA. CONN.  
100CFM EACH  
TYPICAL FOR OFFICES  
12' X 8' RET. GR. ABOVE BASE  
RET. AIR UP THRU. STUD.  
SPACE TO CLG. RET. AIR PLENUM

TWO - 5 DIA. CONN.  
100CFM EACH  
TYPICAL FOR OFFICES  
12' X 8' RET. ABOVE BASE  
RET. AIR UP THRU. STUD.  
SPACE TO CLG. RET. AIR PLENUM

SECOND FLOOR PLAN V UNIT A 1/8" = 1'-0"

**EDUCATION BUILDING ST. CLOUD STATE COLLEGE**

TRAYNOR, HERMANSON & HAHN ARCHITECTS INC.  
ST. CLOUD, MINNESOTA  
STRUCTURAL ENGINEERS JOHNSTON & SAHLMAN, INC. MPLS., MINN.  
CONSULTING ENGINEERS GAUSMAN & MOORE, INC. ST. PAUL, MINN.

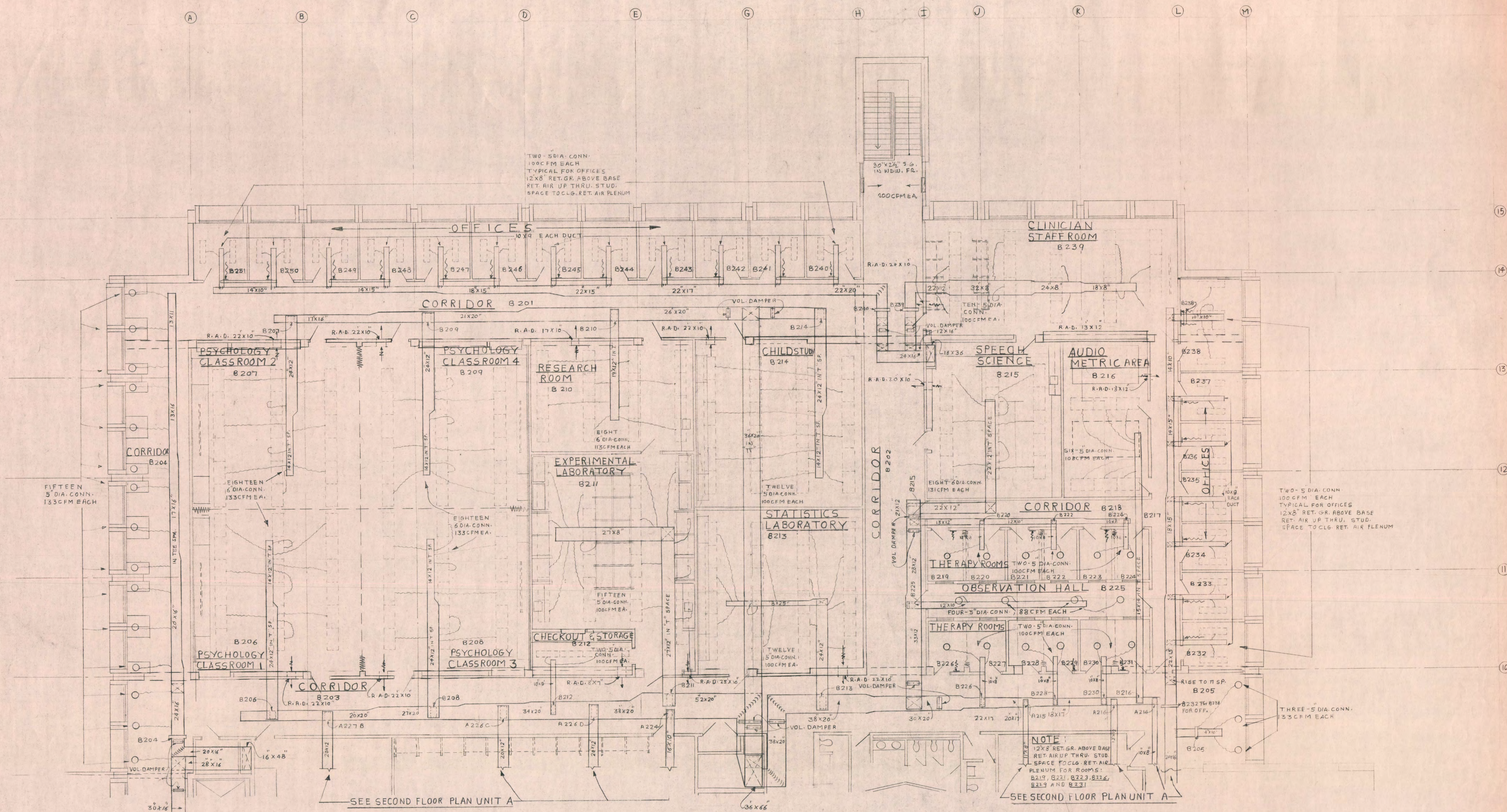
DRAWN \_\_\_\_\_ CHECKED \_\_\_\_\_ DATE NOV. 10, 1969 OF 15

STATE OF MINNESOTA  
DEPARTMENT OF ADMINISTRATION  
ARCHITECTURAL AND ENGINEERING DIVISION  
ROOM G-10 ADMINISTRATION BUILDING  
ST. PAUL 55101

APPROVED BY \_\_\_\_\_  
APPROVED BY \_\_\_\_\_  
APPROVED BY \_\_\_\_\_

STATE PROJECT NO. 6360150 COMMISSIONER OF ADMINISTRATION  
AN AUTHORIZED SIGNATURE

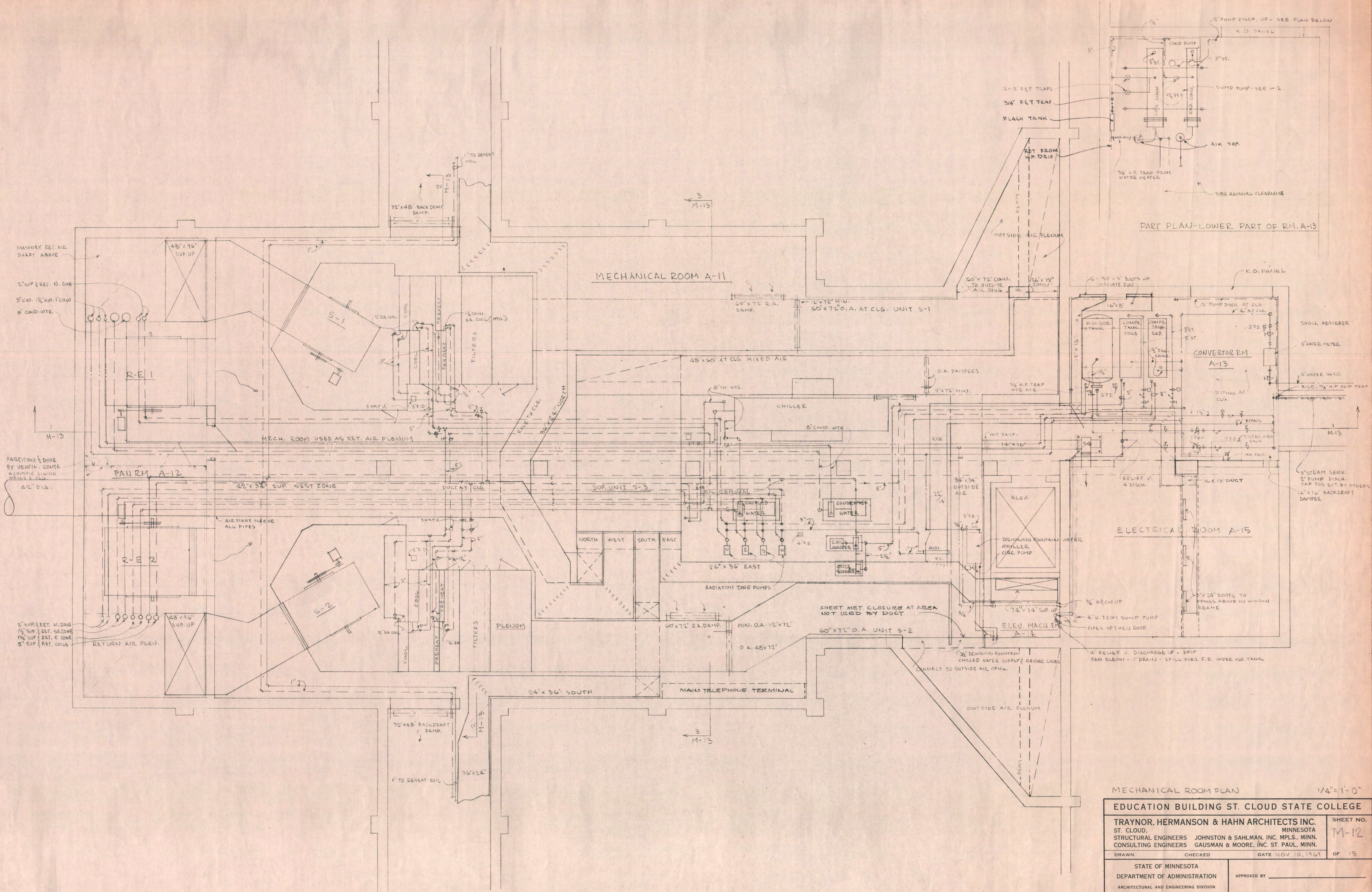




SECOND FLOOR PLAN V UNIT B 1/8" = 1'-0"

<b>EDUCATION BUILDING ST. CLOUD STATE COLLEGE</b>		SHEET NO.
TRAYNOR, HERMANSON & HAHN ARCHITECTS INC. ST. CLOUD, MINNESOTA		M-11
STRUCTURAL ENGINEERS JOHNSTON & SAHLMAN, INC. MPLS., MINN. CONSULTING ENGINEERS GAUSMAN & MOORE, INC. ST. PAUL, MINN.		OF 15
DRAWN	CHECKED	DATE NOV. 10, 1969
STATE OF MINNESOTA DEPARTMENT OF ADMINISTRATION ARCHITECTURAL AND ENGINEERING DIVISION ROOM G-10 ADMINISTRATION BUILDING ST. PAUL 55101		APPROVED BY _____ APPROVED BY _____ APPROVED BY _____
STATE PROJECT NO. 6360150		COMMISSIONER OF ADMINISTRATION AN AUTHORIZED SIGNATURE





MECHANICAL ROOM PLAN 1/4" = 1'-0"

**EDUCATION BUILDING ST. CLOUD STATE COLLEGE**

**TRAYNOR, HERMANSON & HAHN ARCHITECTS INC.**  
 ST. CLOUD, MINNESOTA  
 STRUCTURAL ENGINEERS JOHNSTON & SAHLMAN, INC. MPLS., MINN.  
 CONSULTING ENGINEERS GAUSMAN & MOORE, INC. ST. PAUL, MINN.

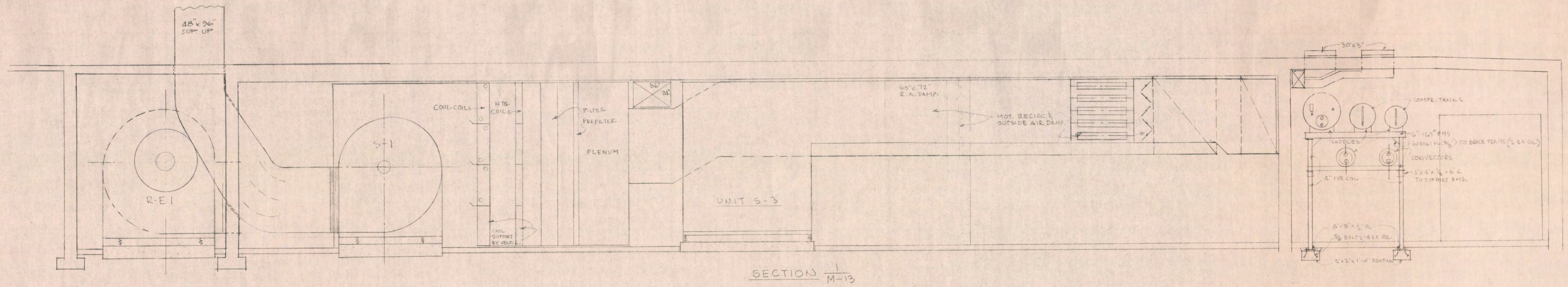
SHEET NO. **M-12**

DRAWN \_\_\_\_\_ CHECKED \_\_\_\_\_ DATE NOV. 10, 1969 OF 15

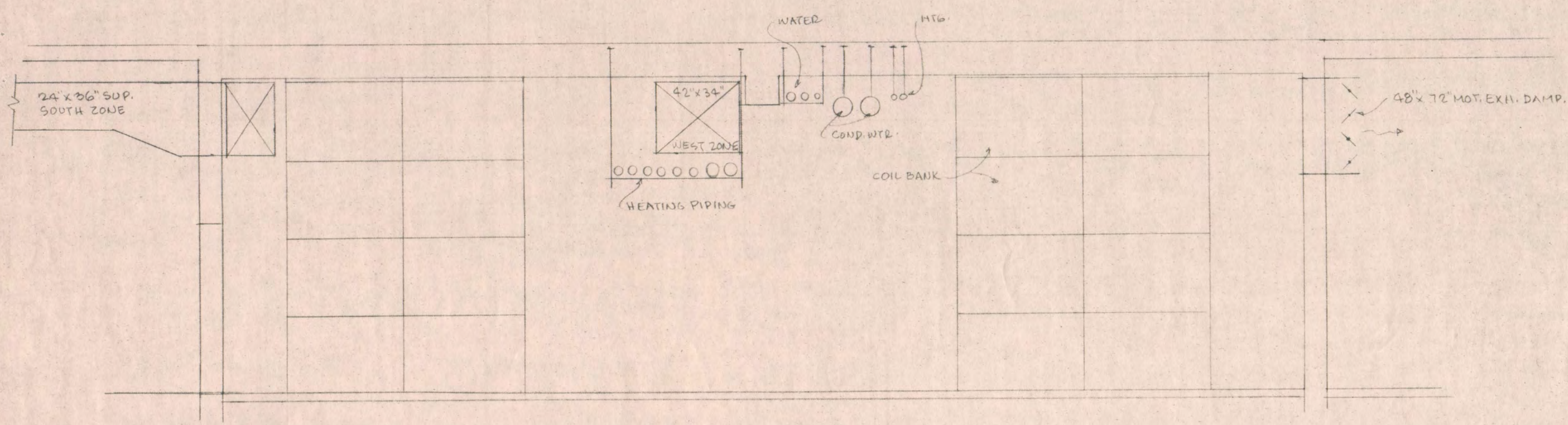
STATE OF MINNESOTA DEPARTMENT OF ADMINISTRATION ARCHITECTURAL AND ENGINEERING DIVISION ROOM 6-10 ADMINISTRATION BUILDING ST. PAUL, MINN.	APPROVED BY _____ APPROVED BY _____ APPROVED BY _____ <small>COMMISSIONER OF ADMINISTRATION AN AUTHORIZED SIGNATURE</small>
------------------------------------------------------------------------------------------------------------------------------------------------------	------------------------------------------------------------------------------------------------------------------------------------------

STATE PROJECT NO. 6360150

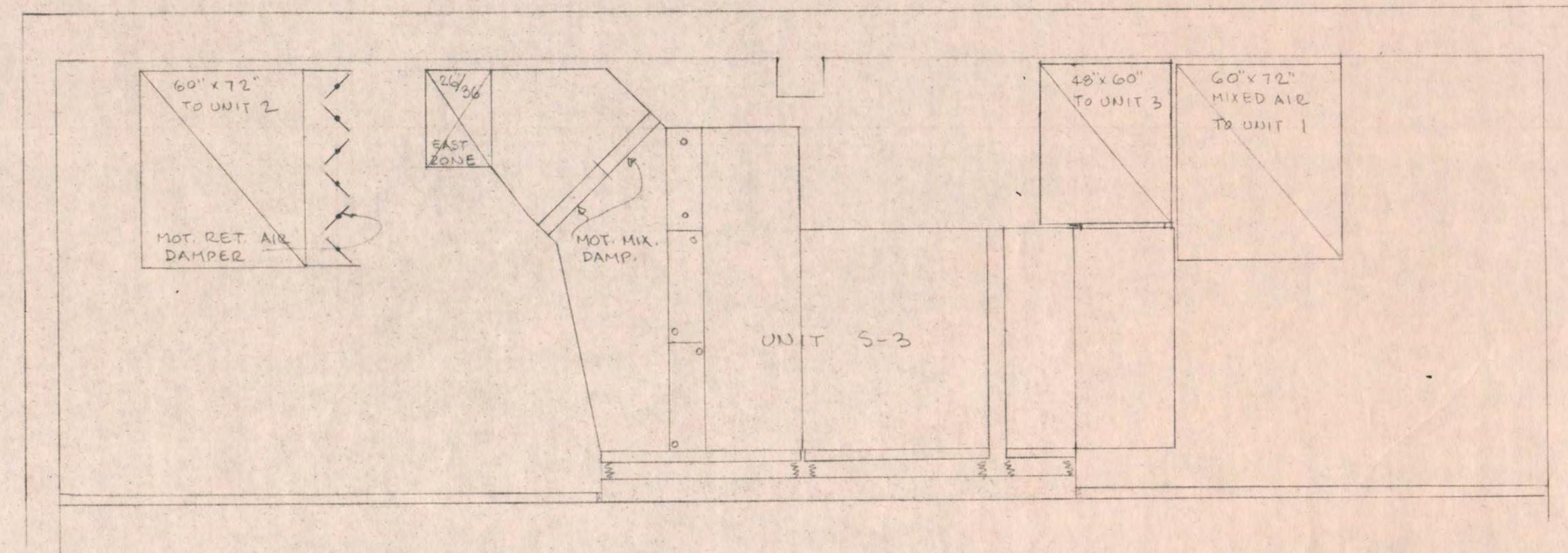




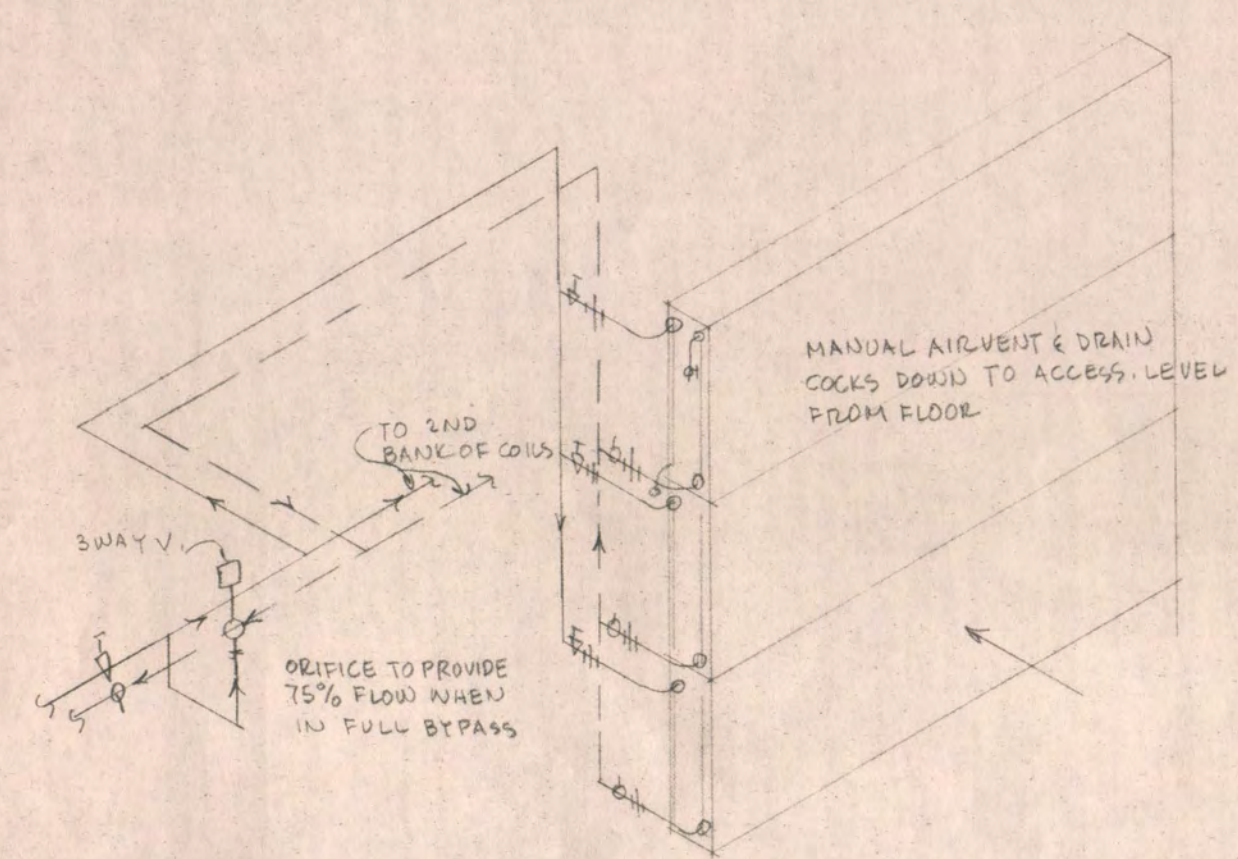
SECTION 1/M-13



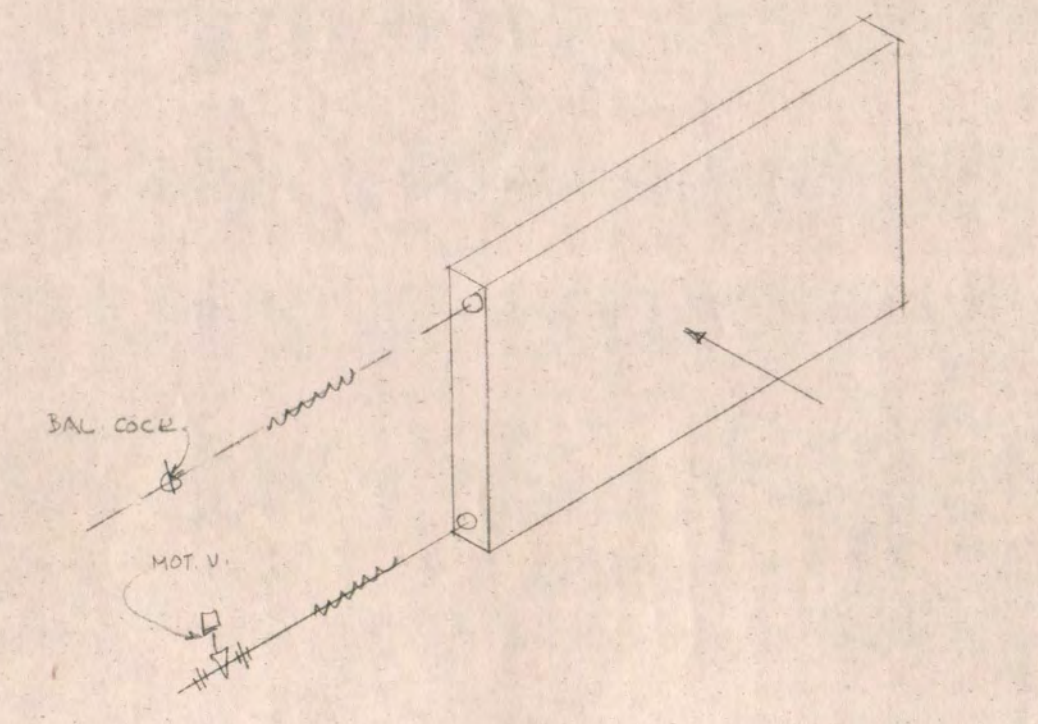
SECTION 2/M-13



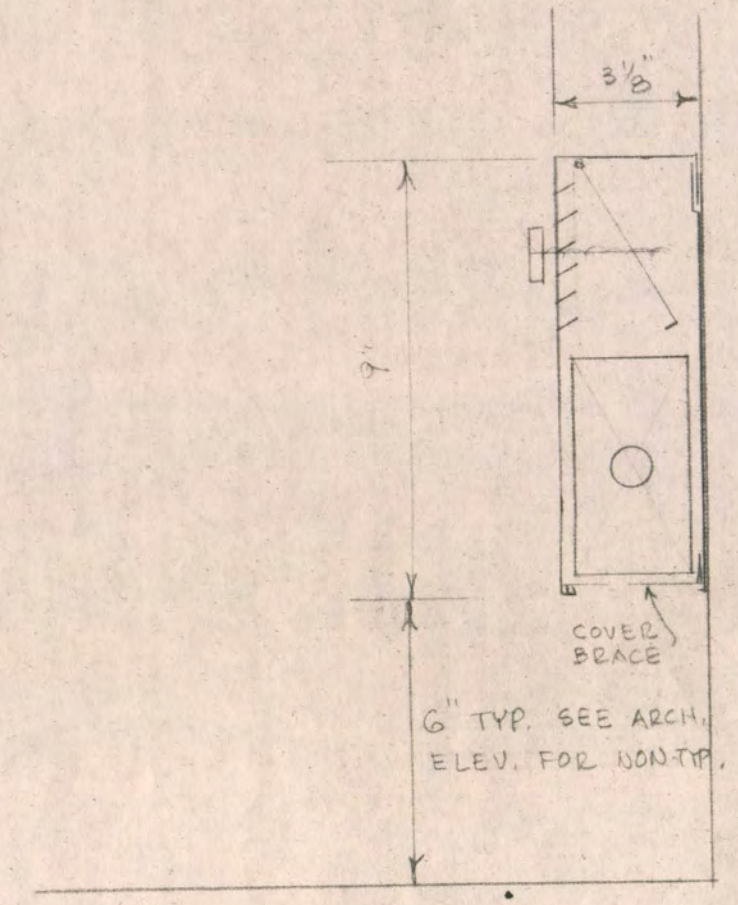
SECTION 3/M-13



UNIT COIL CONNECTION DIAGRAM



REHEAT COIL CONN.



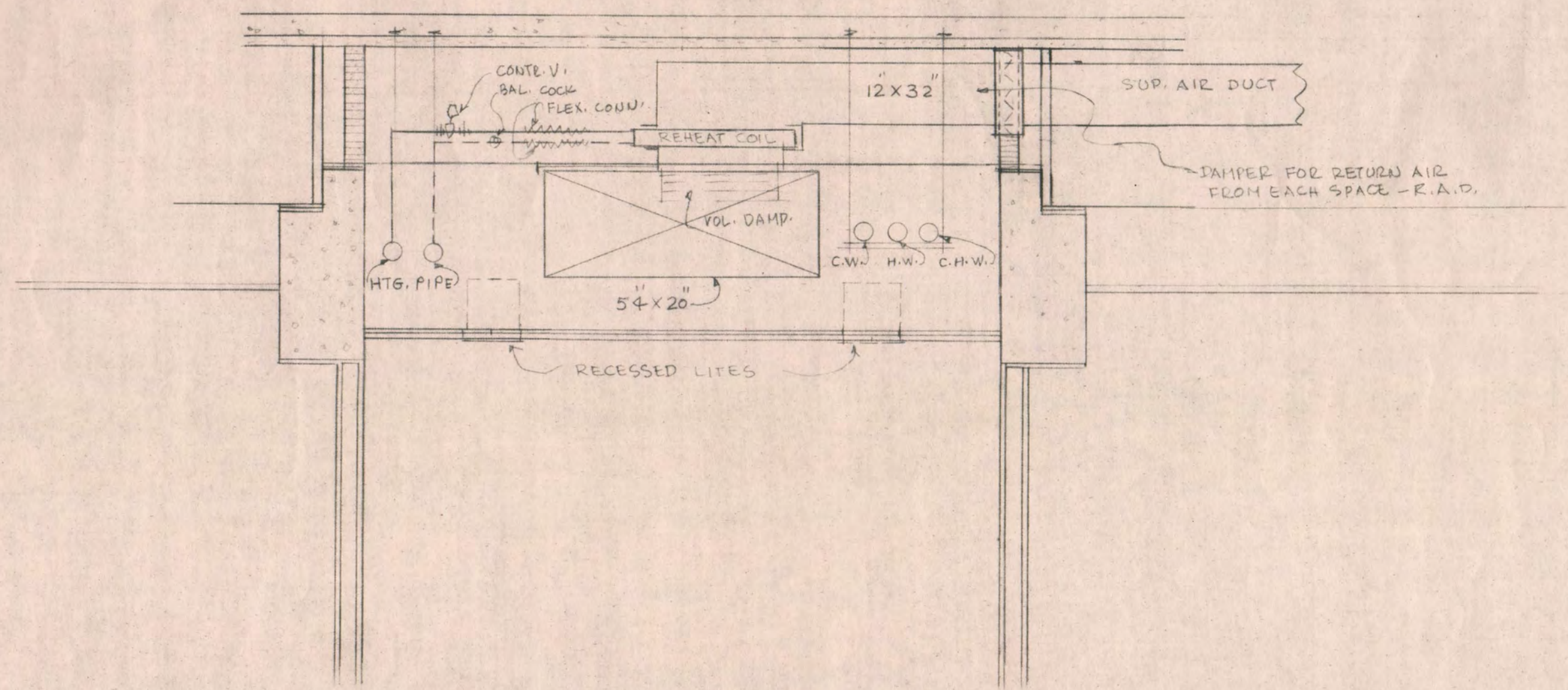
RADIATION DETAIL 3/4\"/>

1/4" = 1'-0"

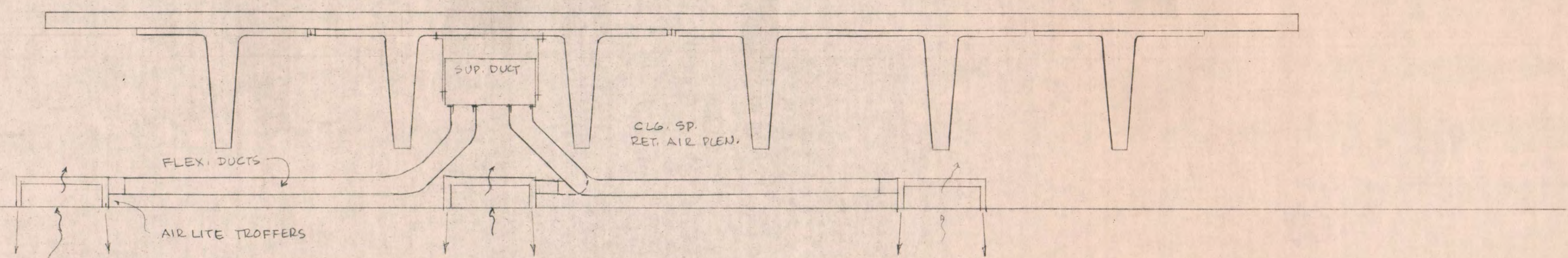
SECTIONS & DETAILS

<b>EDUCATION BUILDING ST. CLOUD STATE COLLEGE</b>		SHEET NO.
<b>TRAYNOR, HERMANSON &amp; HAHN ARCHITECTS INC.</b> ST. CLOUD, MINNESOTA STRUCTURAL ENGINEERS JOHNSTON & SAHLMAN, INC. MPLS., MINN. CONSULTING ENGINEERS GAUSMAN & MOORE, INC. ST. PAUL, MINN.		<b>M-13</b>
DRAWN	CHECKED	DATE NOV. 10, 1969 OF 15
STATE OF MINNESOTA DEPARTMENT OF ADMINISTRATION ARCHITECTURAL AND ENGINEERING DIVISION ROOM G-10 ADMINISTRATION BUILDING ST. PAUL 55101		APPROVED BY _____ APPROVED BY _____ APPROVED BY _____
STATE PROJECT NO. 6360150		COMMISSIONER OF ADMINISTRATION AN AUTHORIZED SIGNATURE

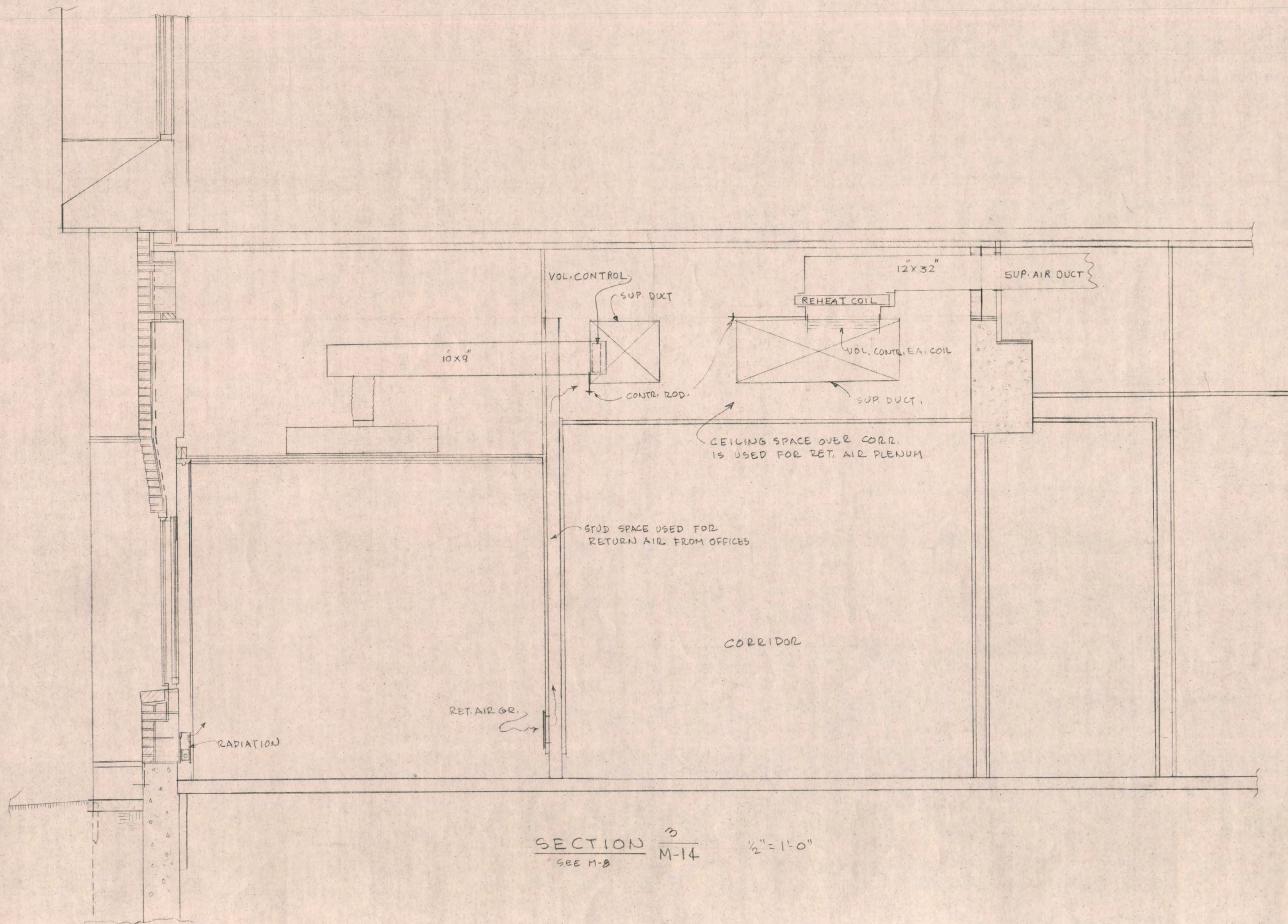




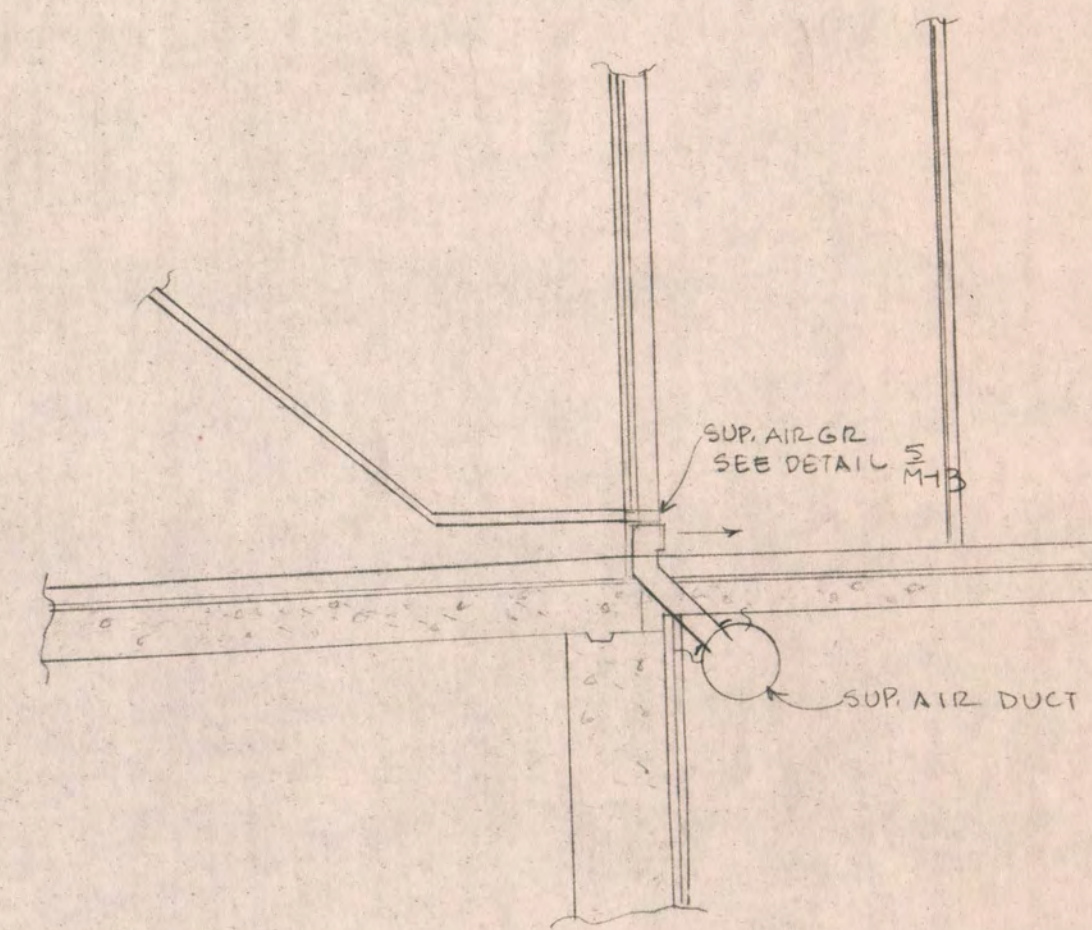
SECTION 1  
SEE M-8 1/2" = 1'-0"  
M-14



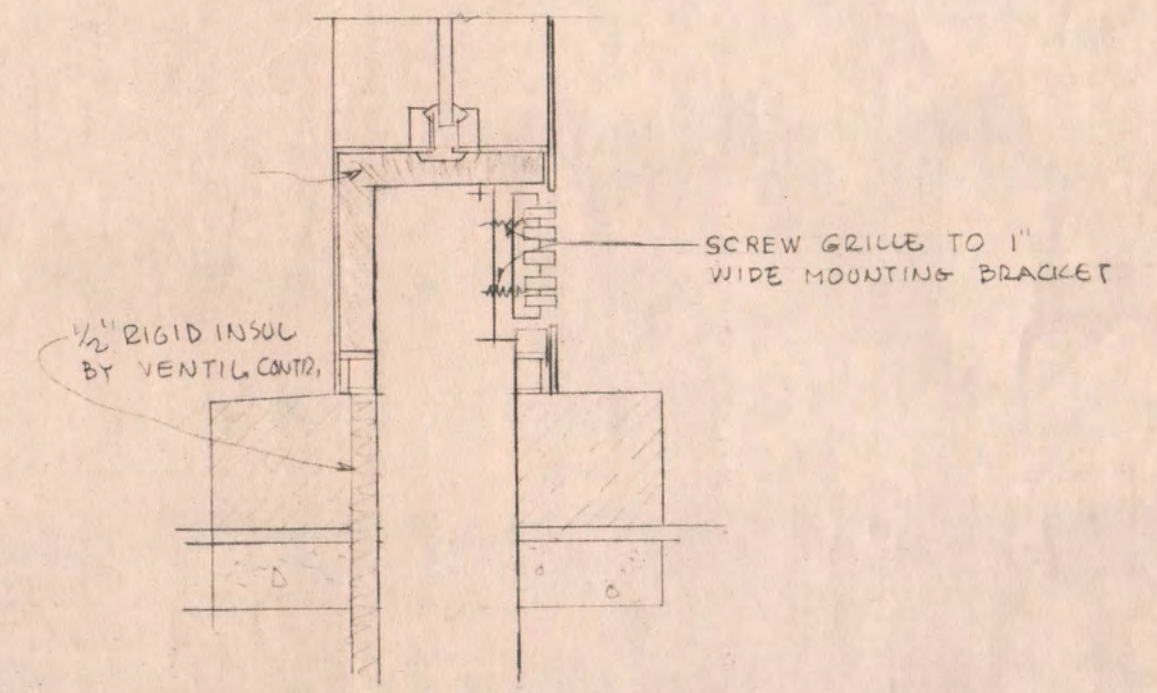
SECTION 2  
SEE M-8 1/2" = 1'-0"  
M-14



SECTION 3  
SEE M-8 1/2" = 1'-0"  
M-14



SECTION 4  
SEE M-8 1/2" = 1'-0"  
M-14



SECTION 5  
M-14 3" = 1'-0"

SECTIONS & DETAILS SCALE AS NOTED

EDUCATION BUILDING ST. CLOUD STATE COLLEGE		SHEET NO.
TRAYNOR, HERMANSON & HAHN ARCHITECTS INC. ST. CLOUD, MINNESOTA		M-14
STRUCTURAL ENGINEERS JOHNSTON & SAHLMAN, INC. MPLS., MINN. CONSULTING ENGINEERS GAUSMAN & MOORE, INC. ST. PAUL, MINN.		OF 15
DRAWN	CHECKED	DATE NOV. 10, 1969
STATE OF MINNESOTA DEPARTMENT OF ADMINISTRATION ARCHITECTURAL AND ENGINEERING DIVISION ROOM 6-10 ADMINISTRATION BUILDING ST. PAUL 55101		APPROVED BY _____
STATE PROJECT NO. 6360150		APPROVED BY _____
		APPROVED BY _____ COMMISSIONER OF ADMINISTRATION AN AUTHORIZED SIGNATURE