

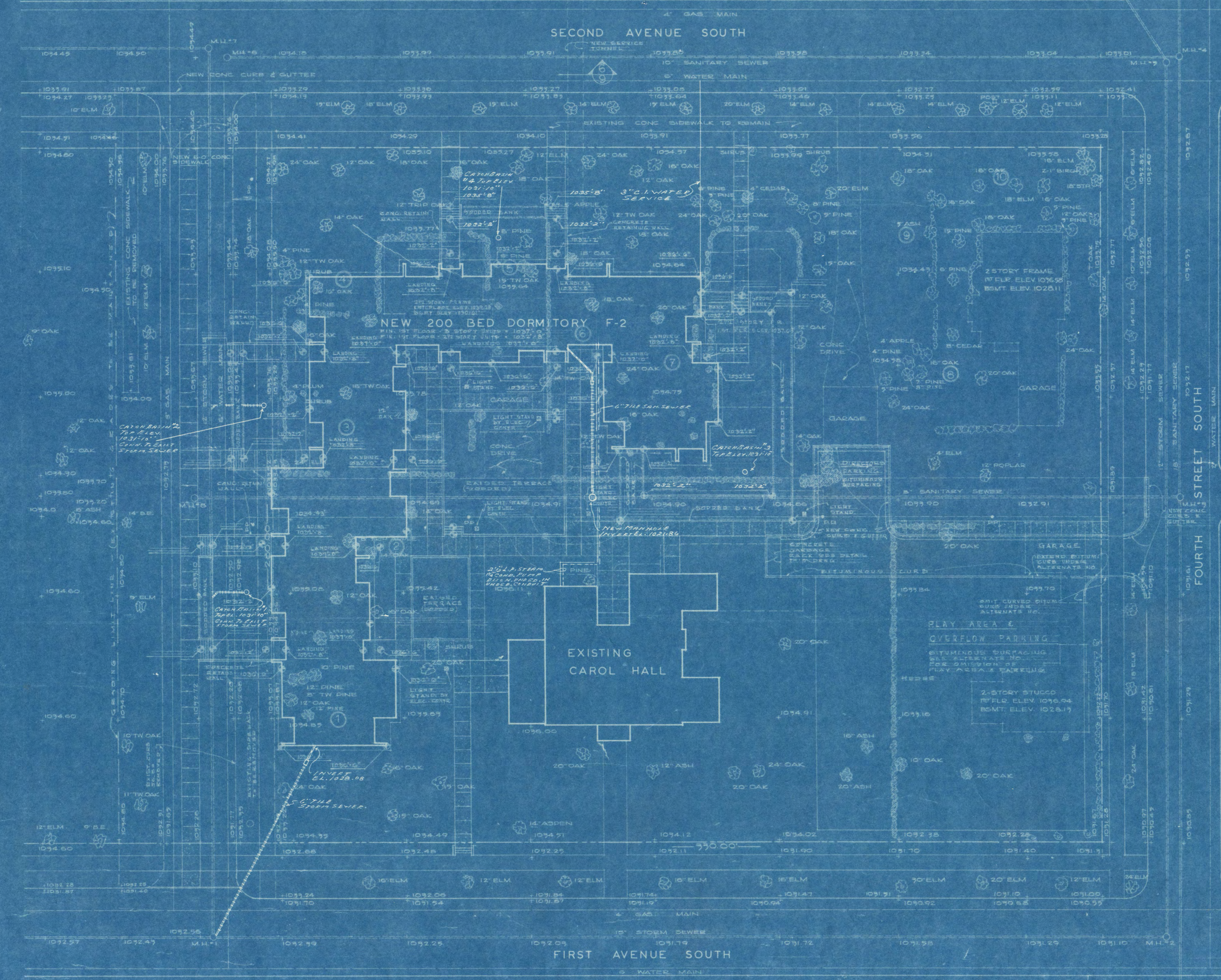
MANHOLE DATA		
MAN. NO.	Y&D ELEV.	DIAMETER
1	1033.47	10" DIA.
2	1033.77	10" DIA.
3	1033.10	10" DIA.
4	1033.11	10" DIA.
5	1033.09	10" DIA.
6	1034.38	10" DIA.
7	1034.03	10" DIA.
8	1033.04	10" DIA.

BENCH MARK DATA		
MARK	Y&D ELEV.	DESCRIPTION
1	1033.12	CONCRETE CORNER
2	1033.12	CONCRETE CORNER
3	1033.12	CONCRETE CORNER

PLOT PLAN DATA	
GRADES	EXISTING 1033.50
	ESTABLISHED 1033.50
TREES	REMOVE
	SAVE
BASED UPON	EXISTING WITH ADJUSTMENTS
	BASED UPON 1033.50
PROPERTY	1033.50
TEST BORING	1033.50

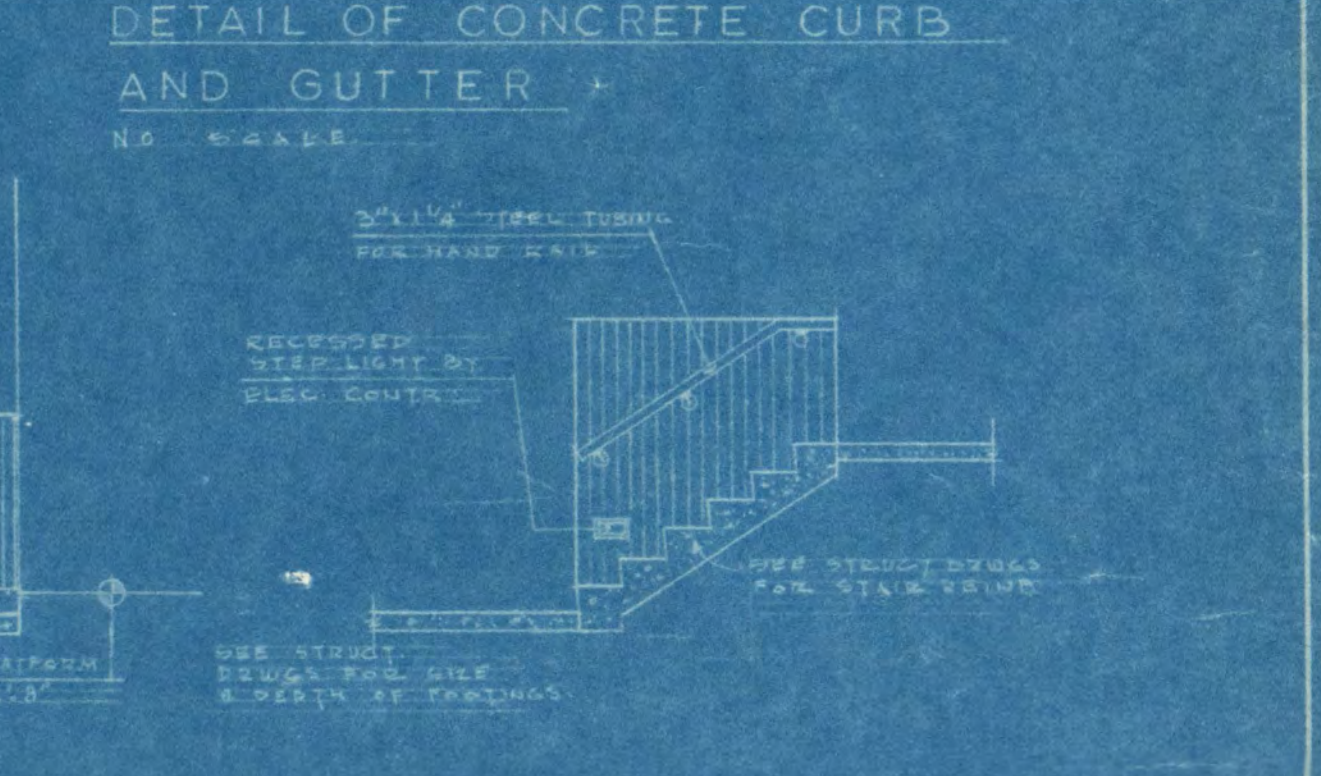
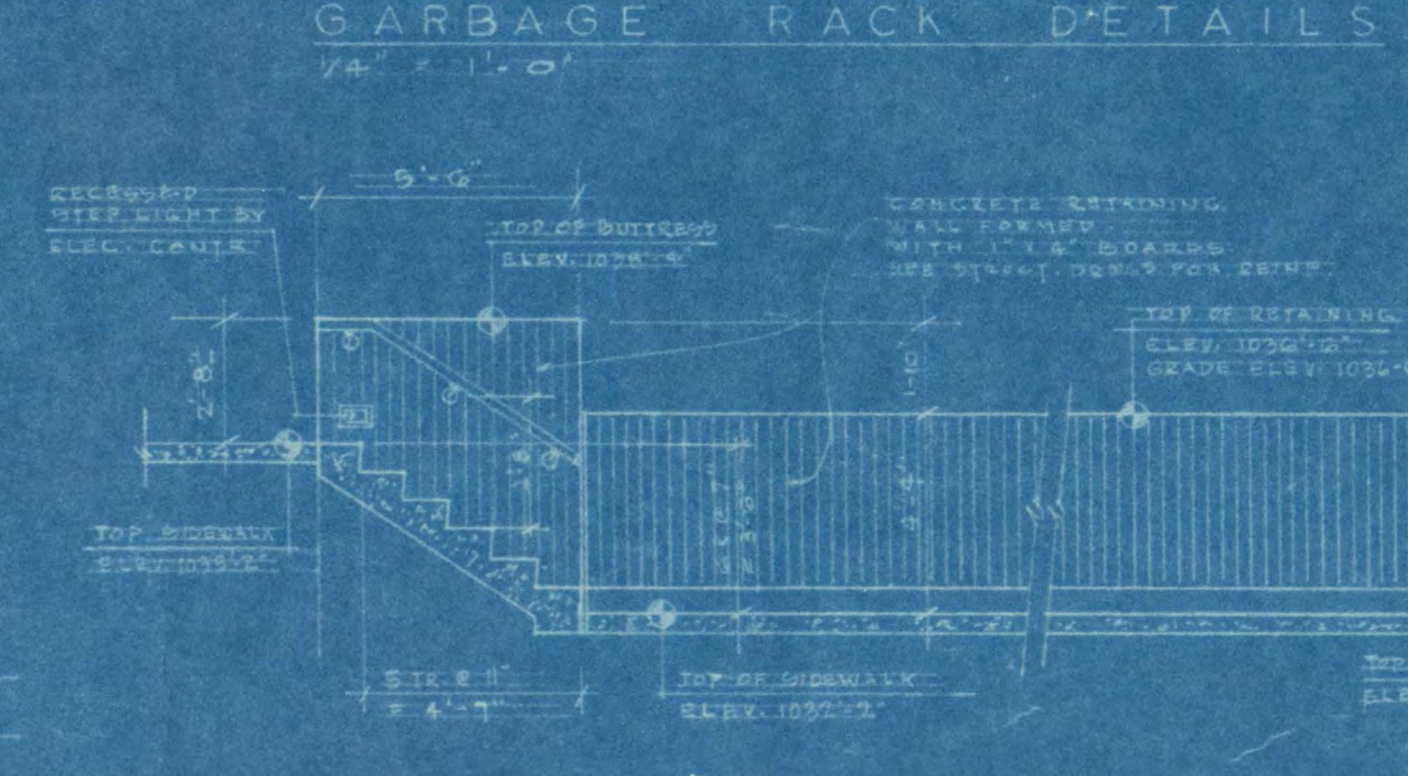
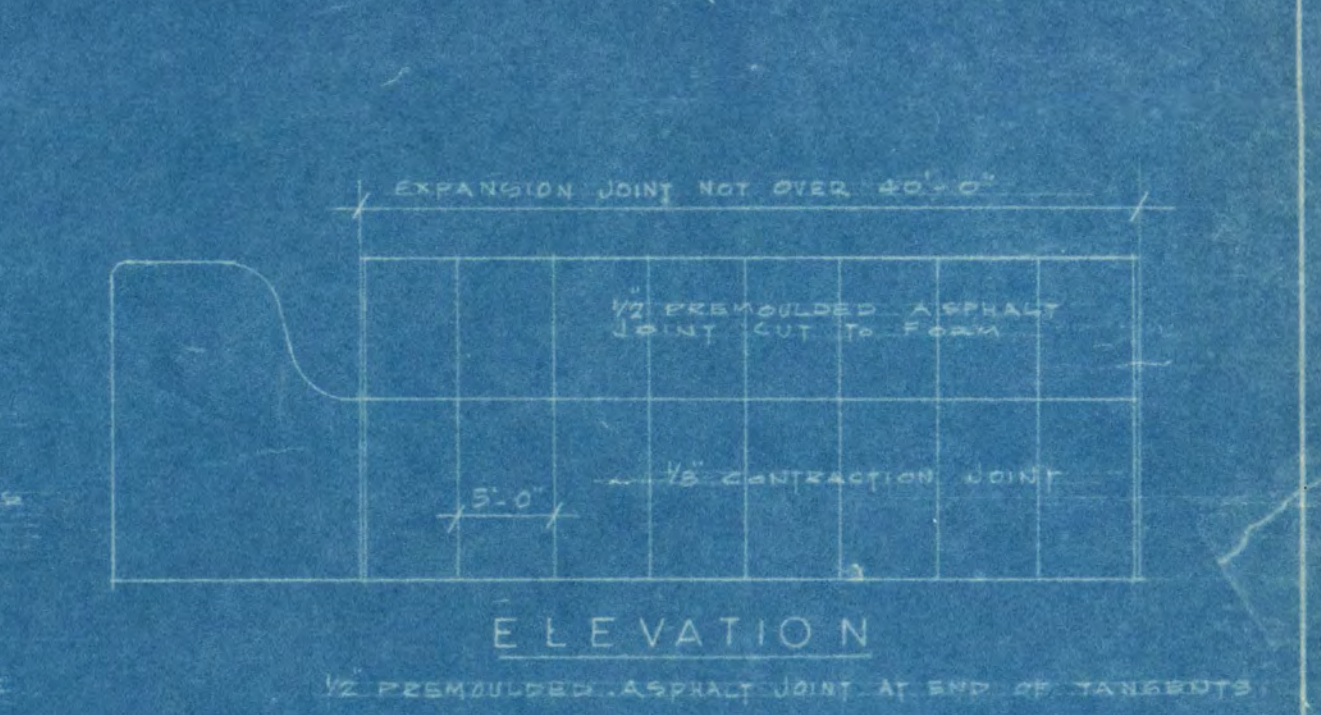
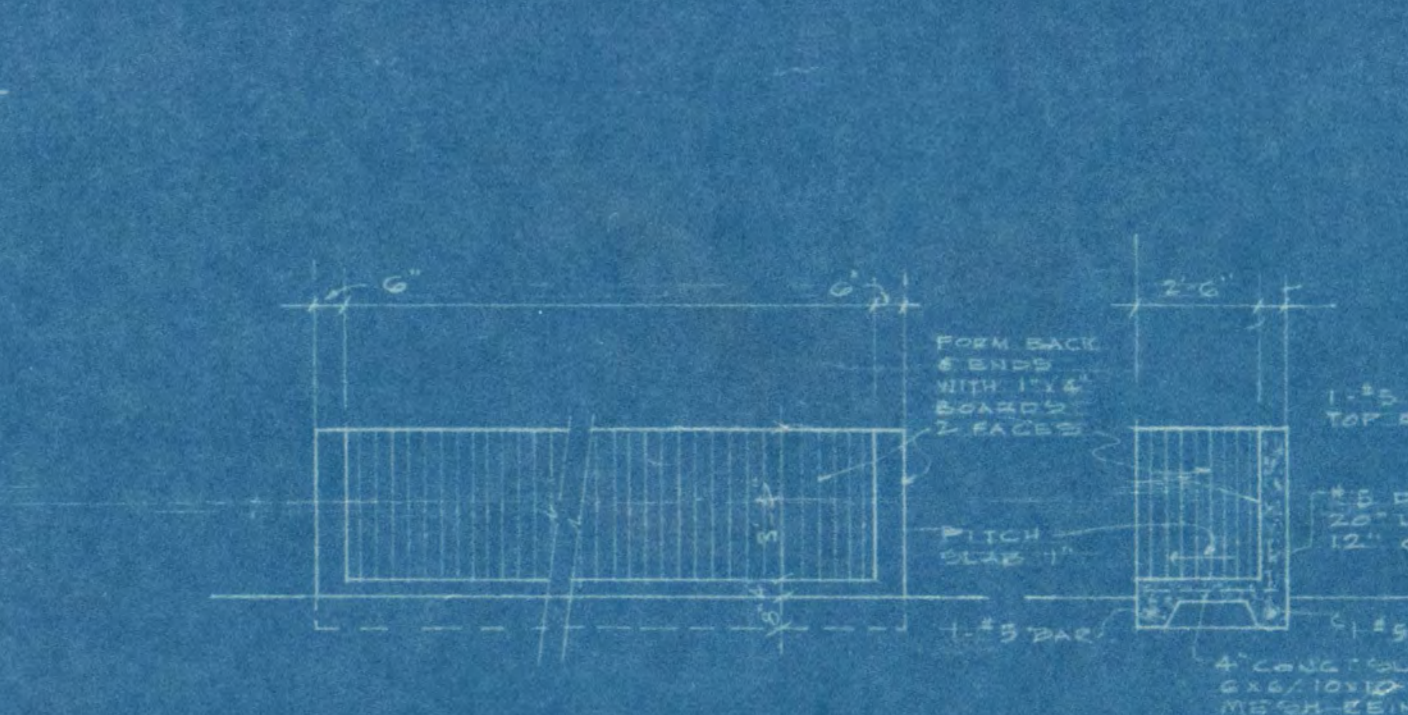
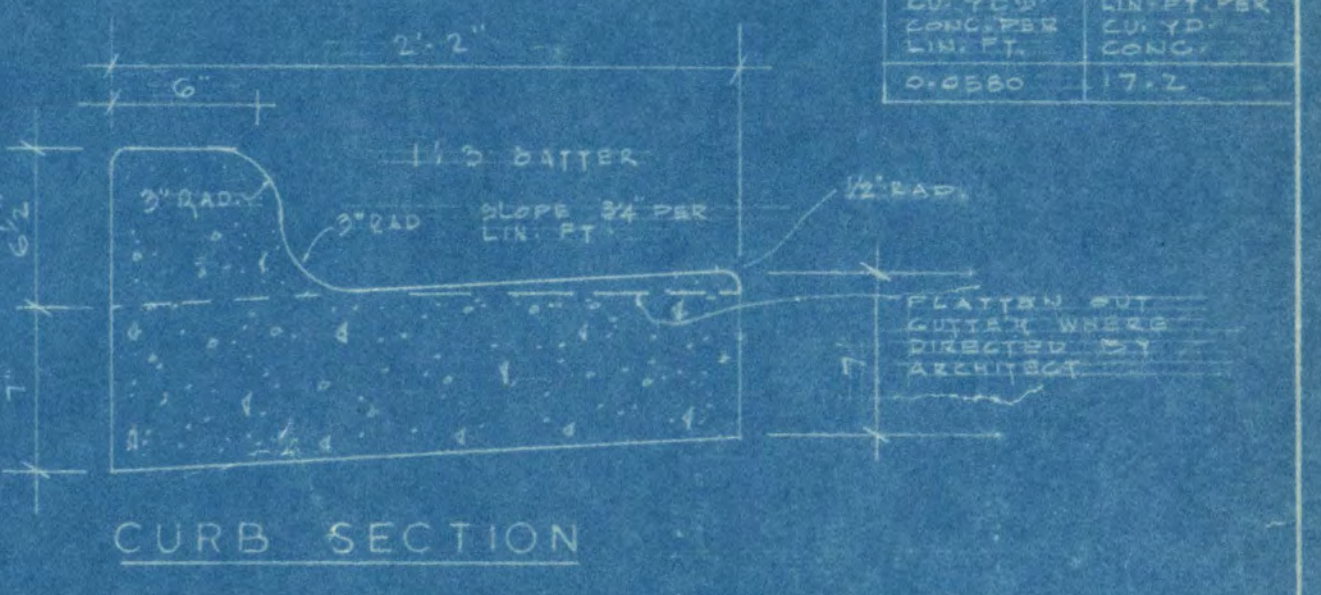
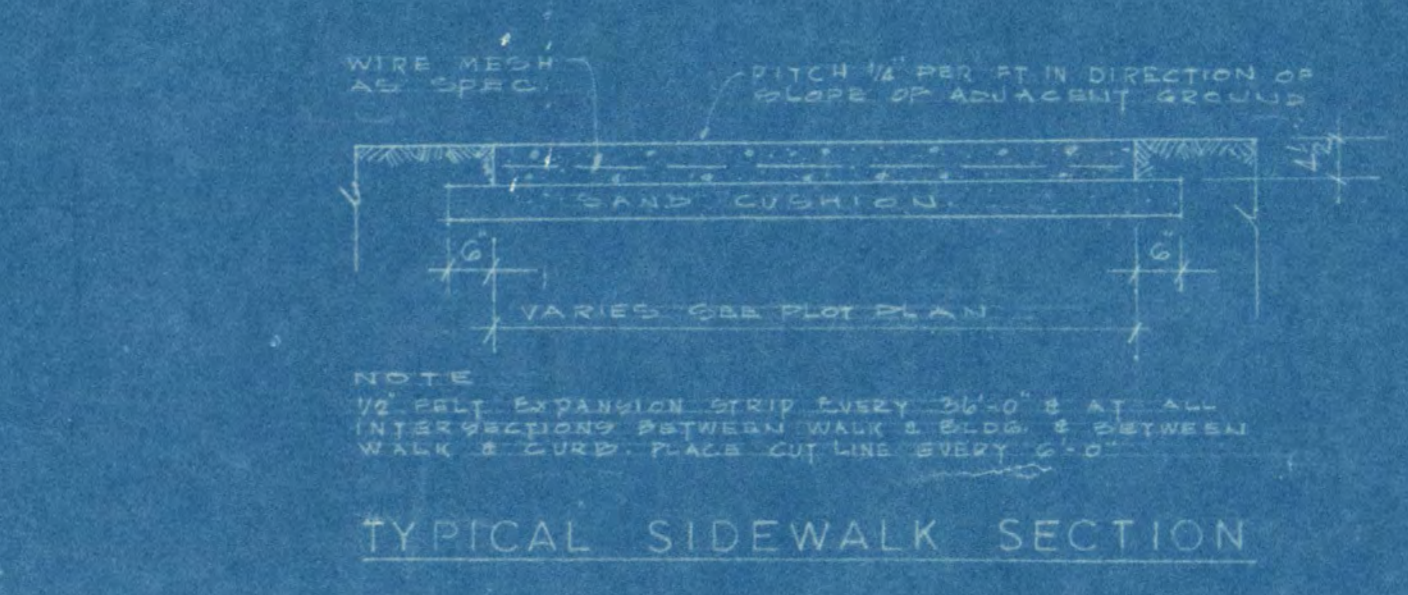
DETAIL NUMBERS	
3	DETAIL NUMBER
5	SHEET NUMBER
3	BASED AS ABOVE
5	DIRECTION OF SECTION - DETAIL
3	BASED AS ABOVE
5	DIRECTION OF ELEVATION - DETAIL
132	INDICATES DRAW NUMBER
133	INDICATES DRAW ORIGIN NO.
A	INDICATES BY FIELD CODE LETTER

MATERIAL SYMBOLS			
	EARTH		CONCRETE
	GRAVEL		BRICK
	CONCRETE		STONE
	BRICK		METAL
	STONE		GLASS
	METAL		WOOD
	GLASS		ASPHALT
	WOOD		INSULATION

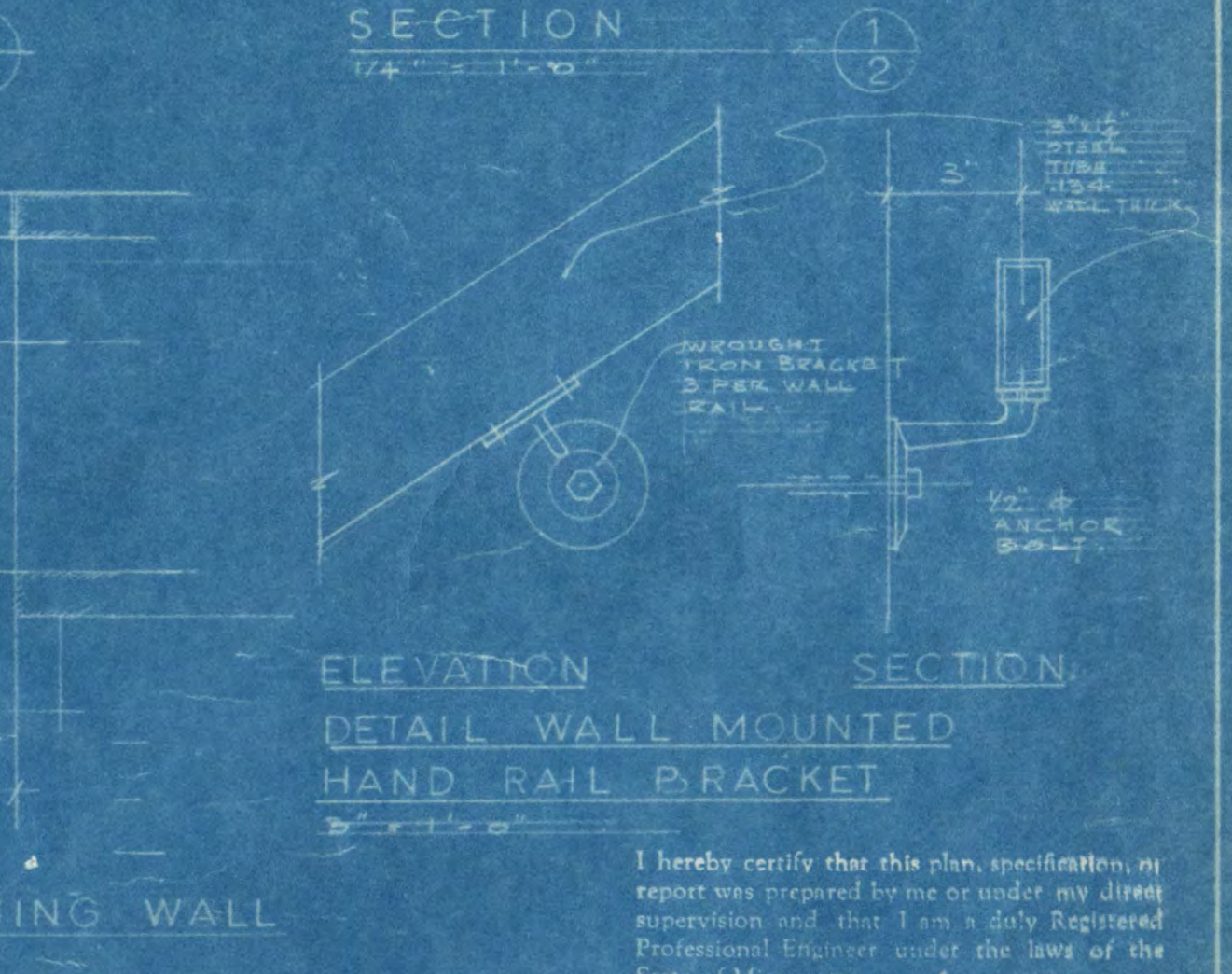
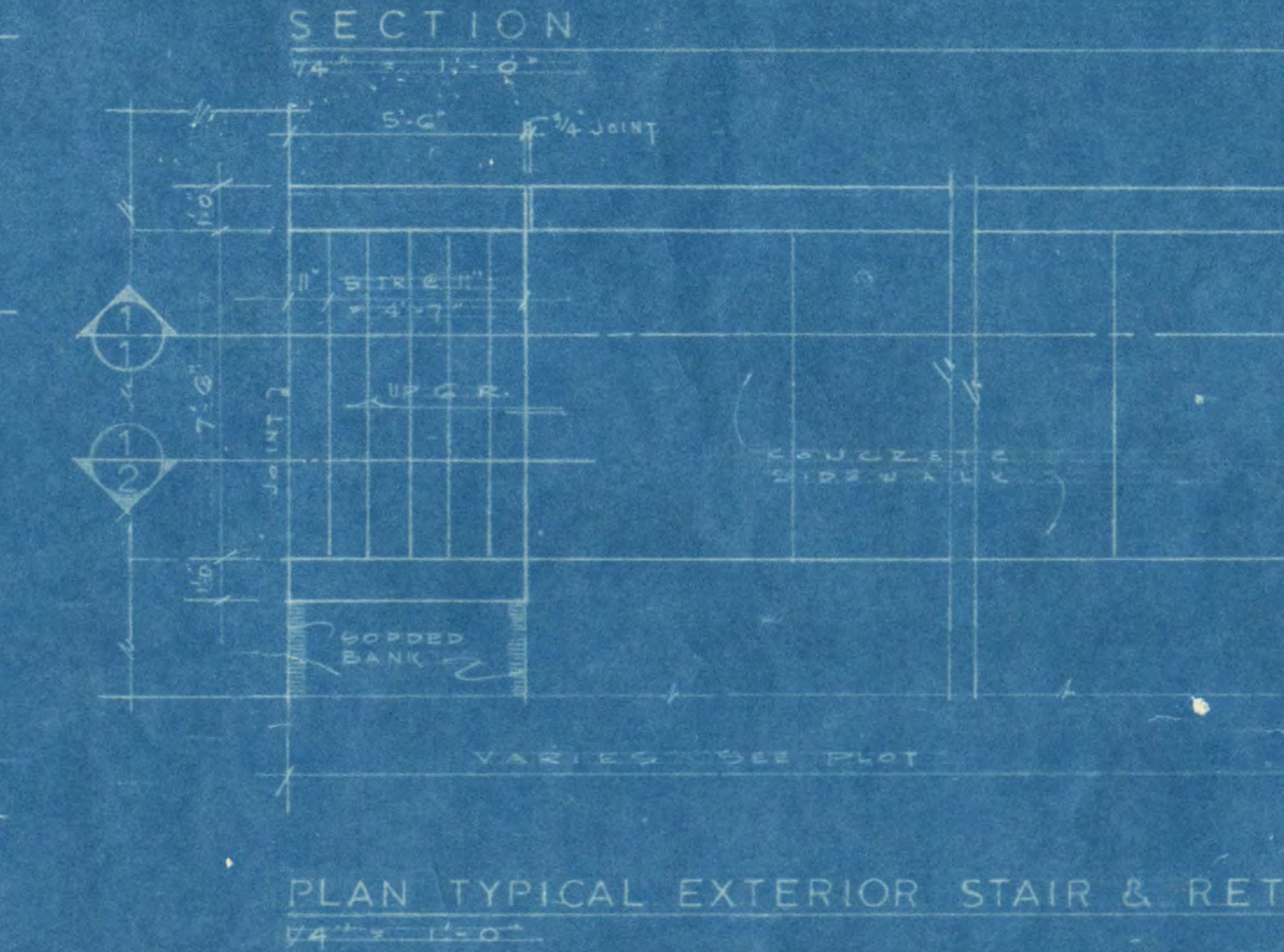
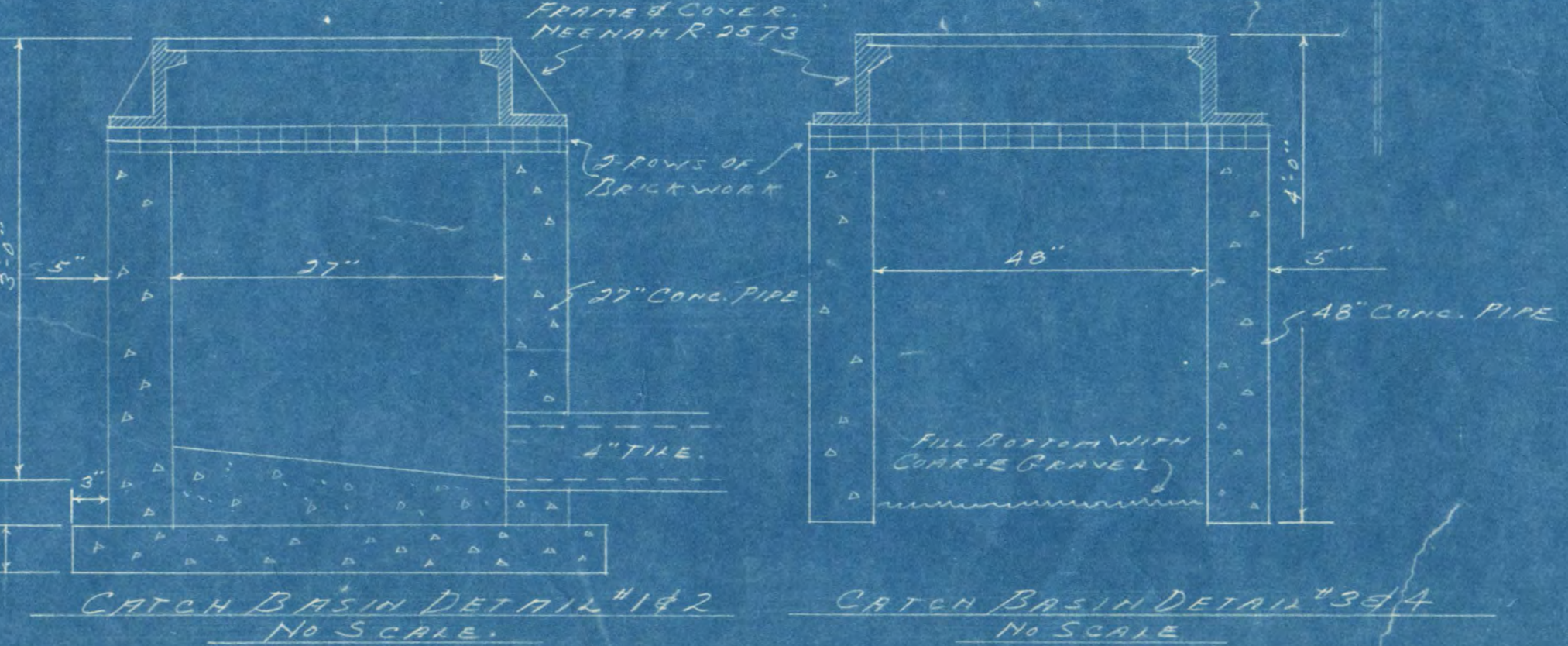


BORING LEGEND	
	DARK BROWN SANDY LOAM (10%)
	BROWN SANDY LOAM (10%)
	LIGHT BROWN SANDY LOAM (10%)
	FINE SAND
	GRAVEL
	ROCK
	WATER

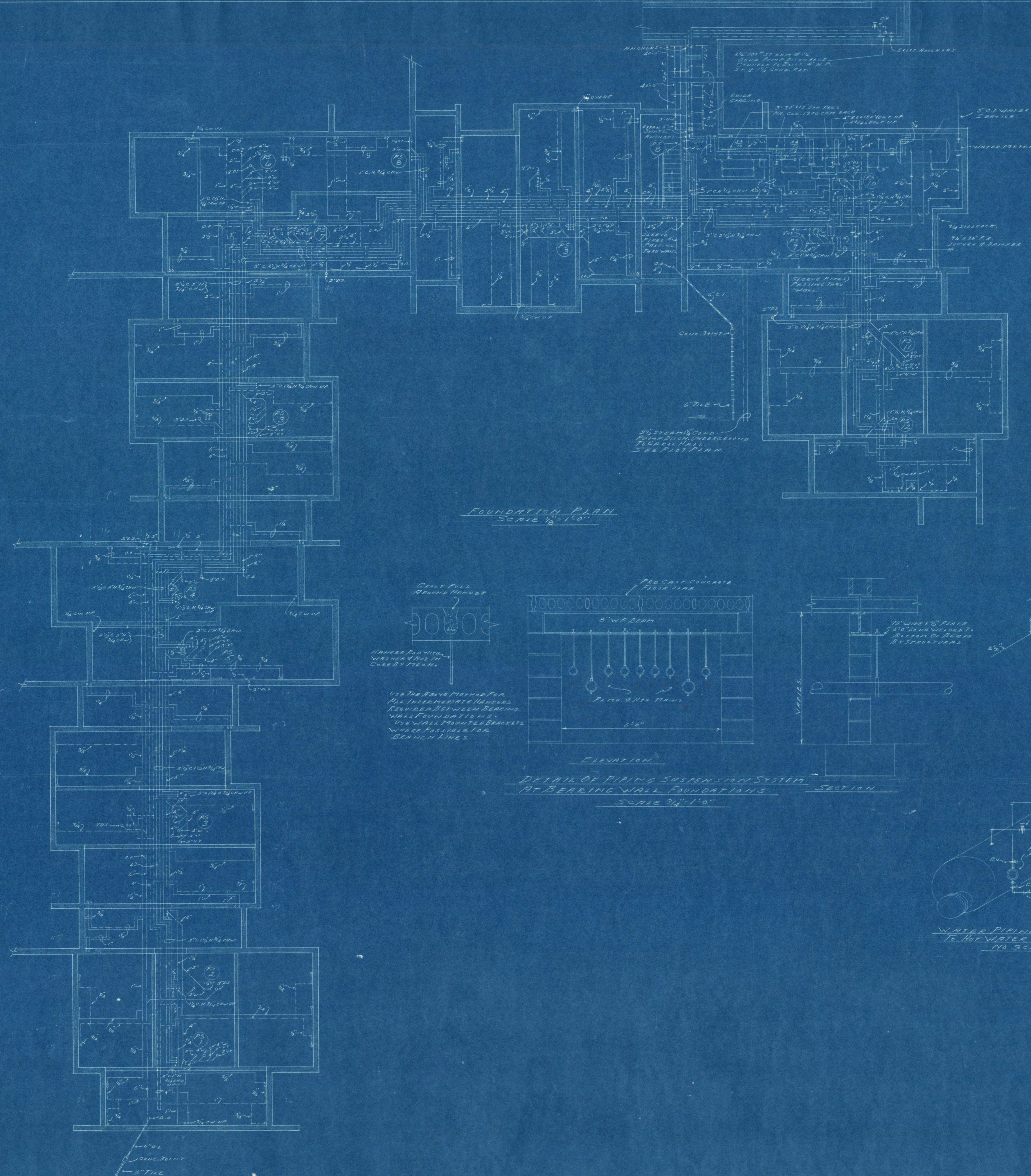
TEST BORING CHART										
ELEV.	TEST HOLE NUMBER									
	1	2	3	4	5	6	7	8	9	10
1033.0										
1032.0										
1031.0										
1030.0										
1029.0										
1028.0										



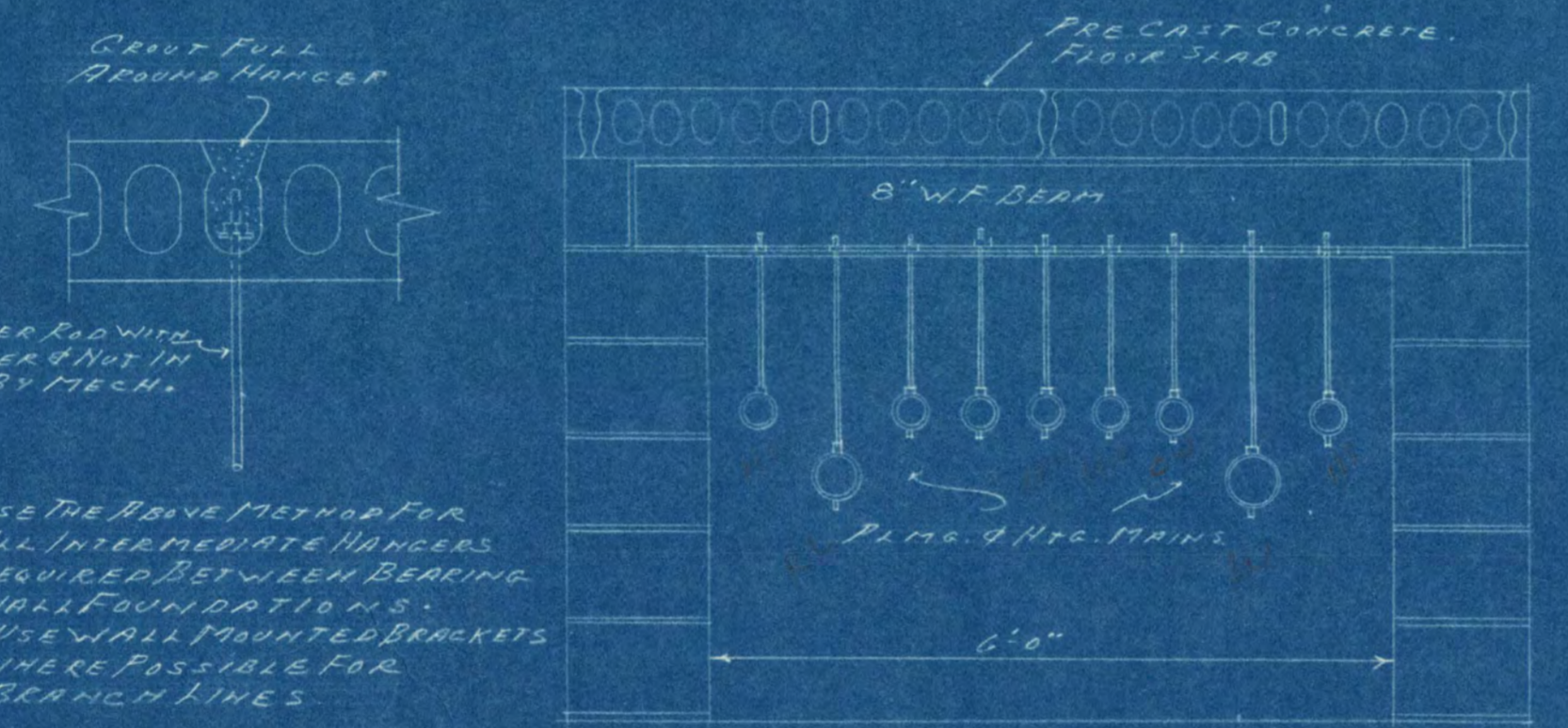
PLOT PLAN
1" = 20'



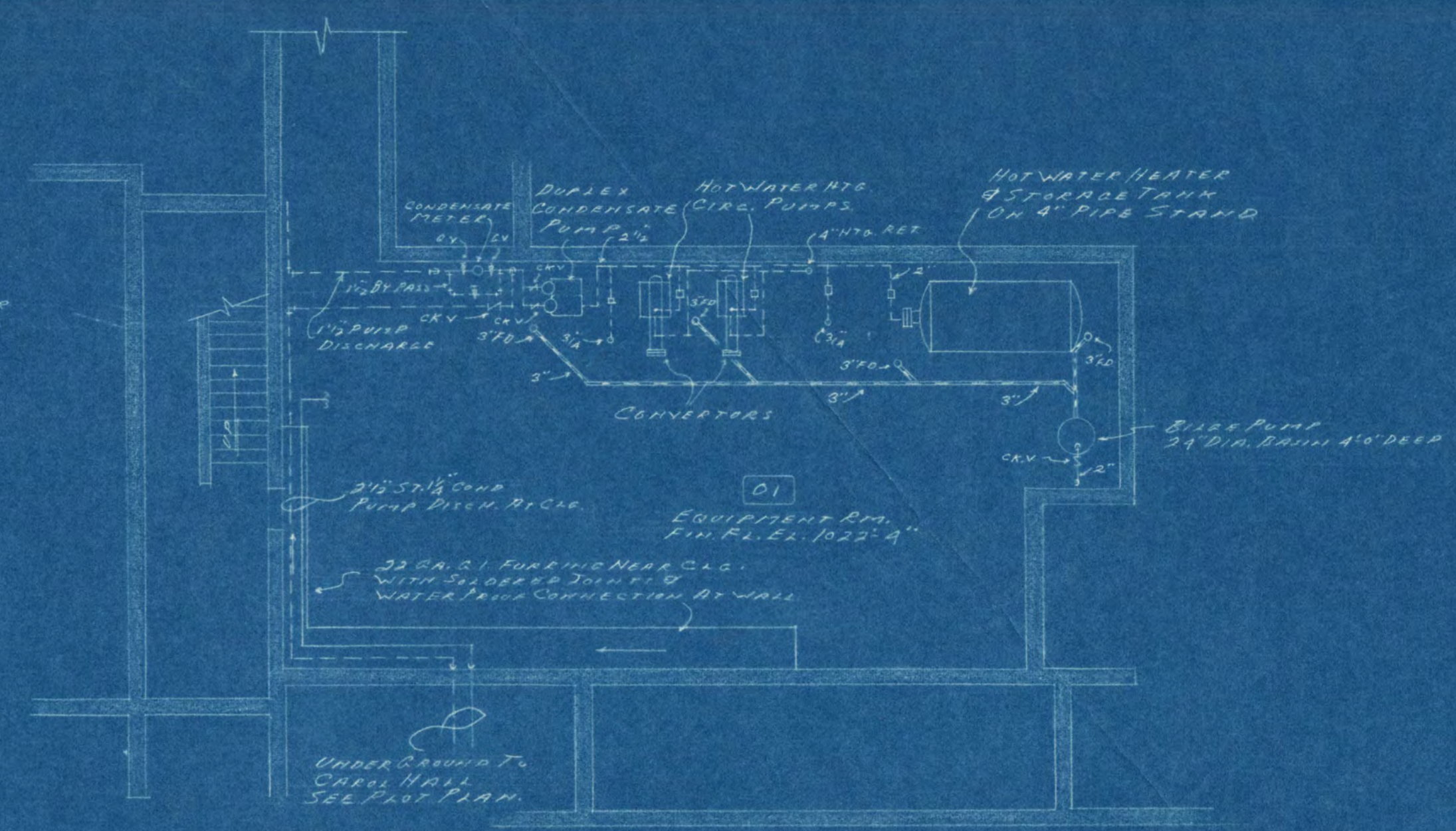
I hereby certify that this plan, specification, or report was prepared by me or under my direct supervision and that I am a duly Registered Professional Engineer under the laws of the State of Minnesota.
 S. A. Johnson
 Date: Aug 1, 1966 No. 3036



FOUNDATION PLAN
SCALE 1/8" = 1'-0"



ELEVATION
DETAIL OF PIPING SUSPENSION SYSTEM
AT BEARING WALL FOUNDATIONS
SCALE 3/4" = 1'-0"



LOWER PART OF EQUIPMENT ROOM
SCALE 1/8" = 1'-0"

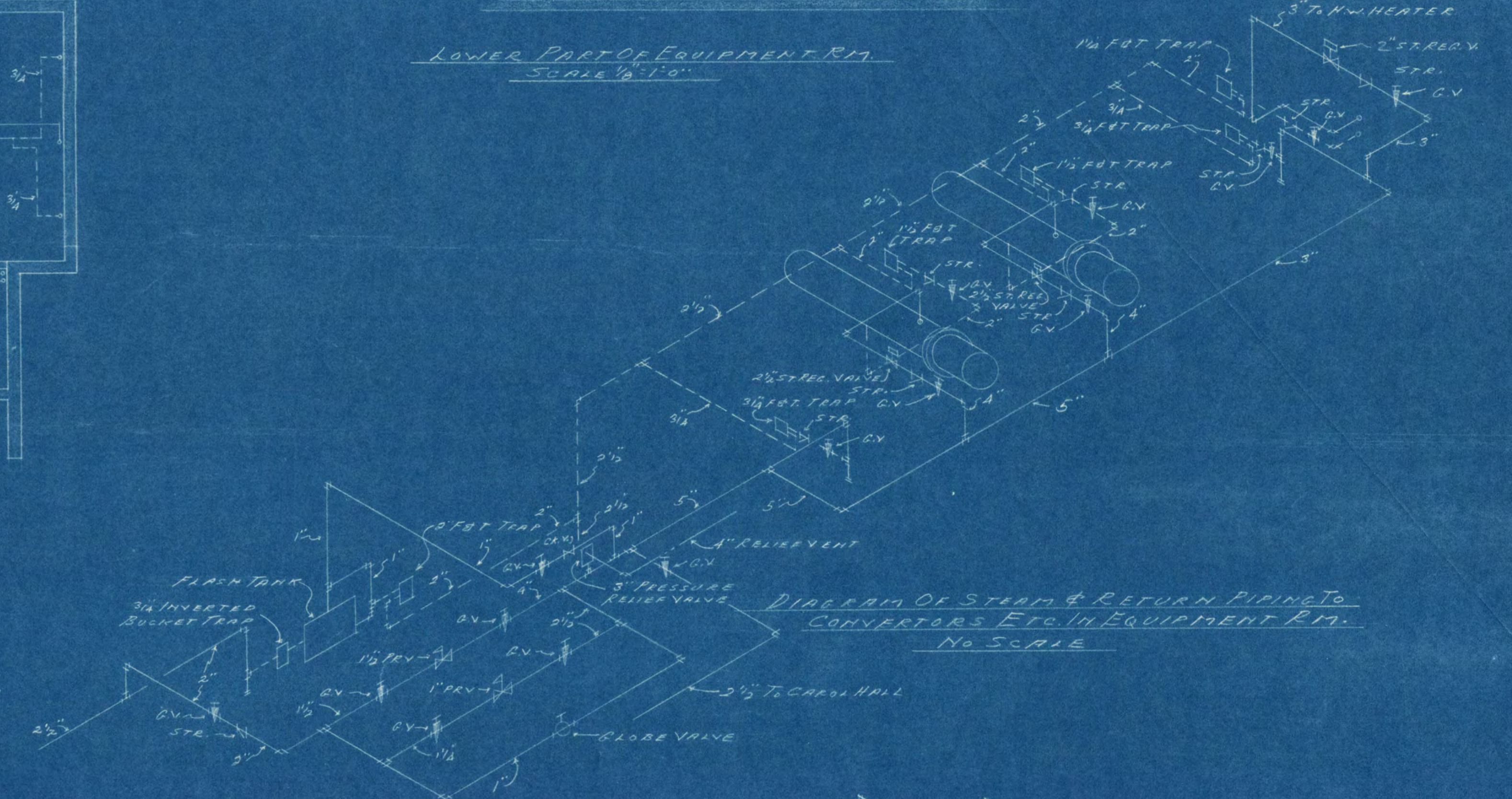
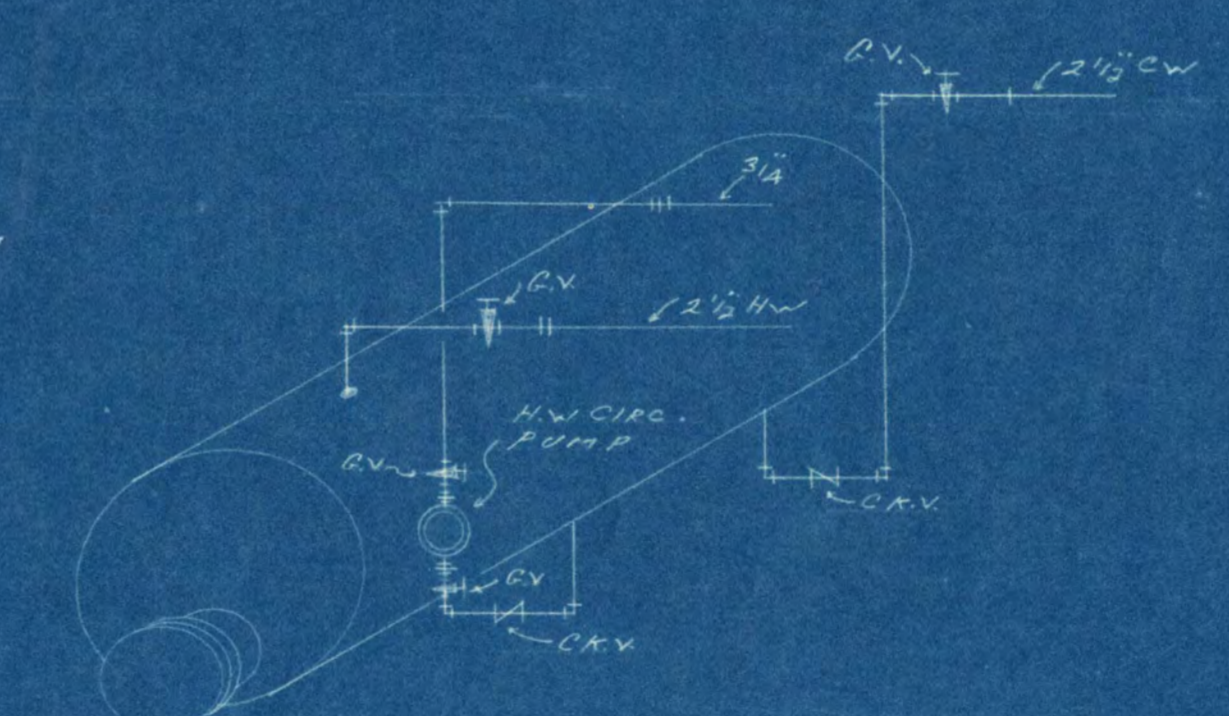


DIAGRAM OF STEAM & RETURN PIPING TO
CONVERTERS ETC. IN EQUIPMENT ROOM
NO SCALE



WATER PIPING DIAGRAM
TO HOT WATER STORAGE TANK
NO SCALE

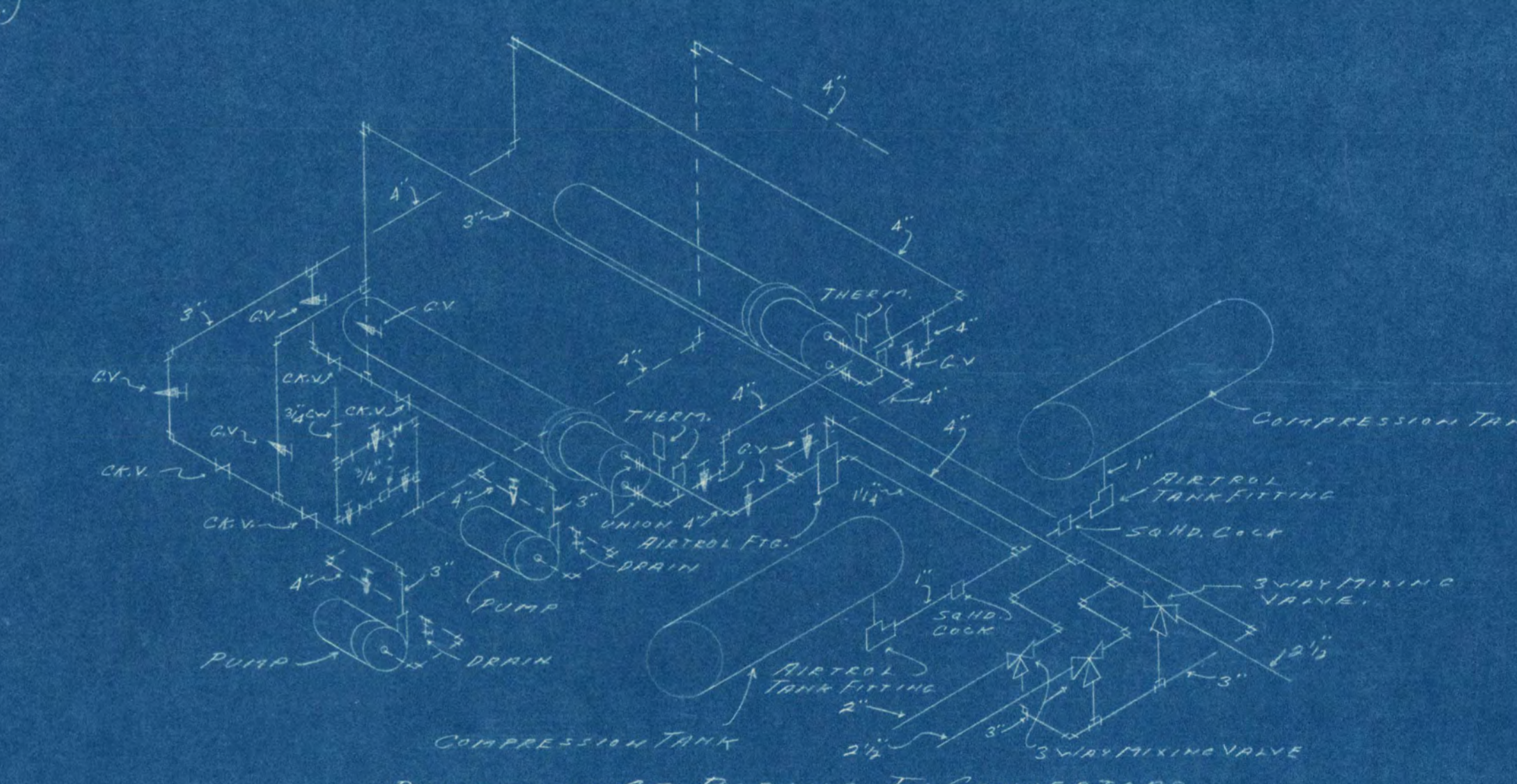
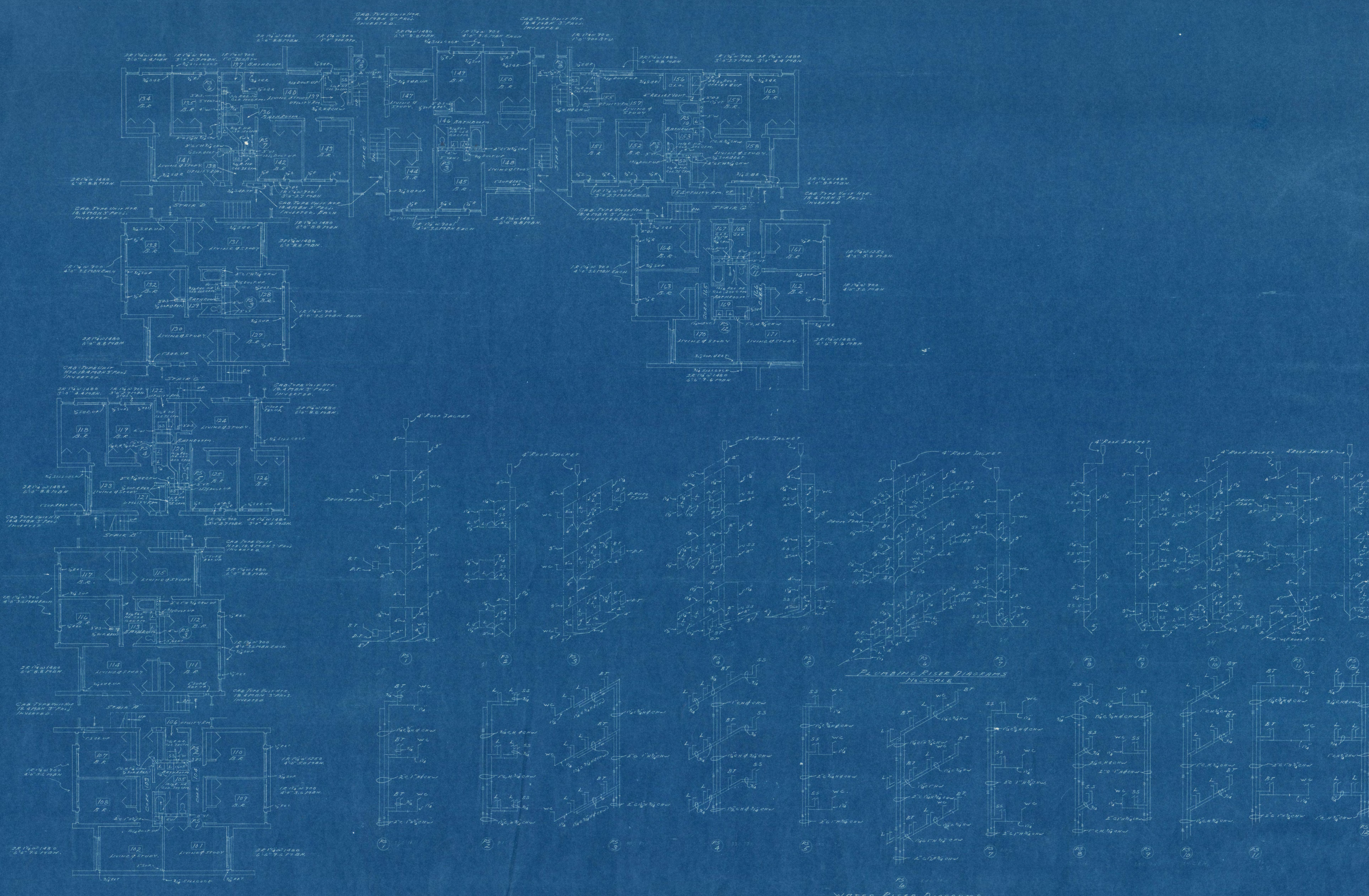
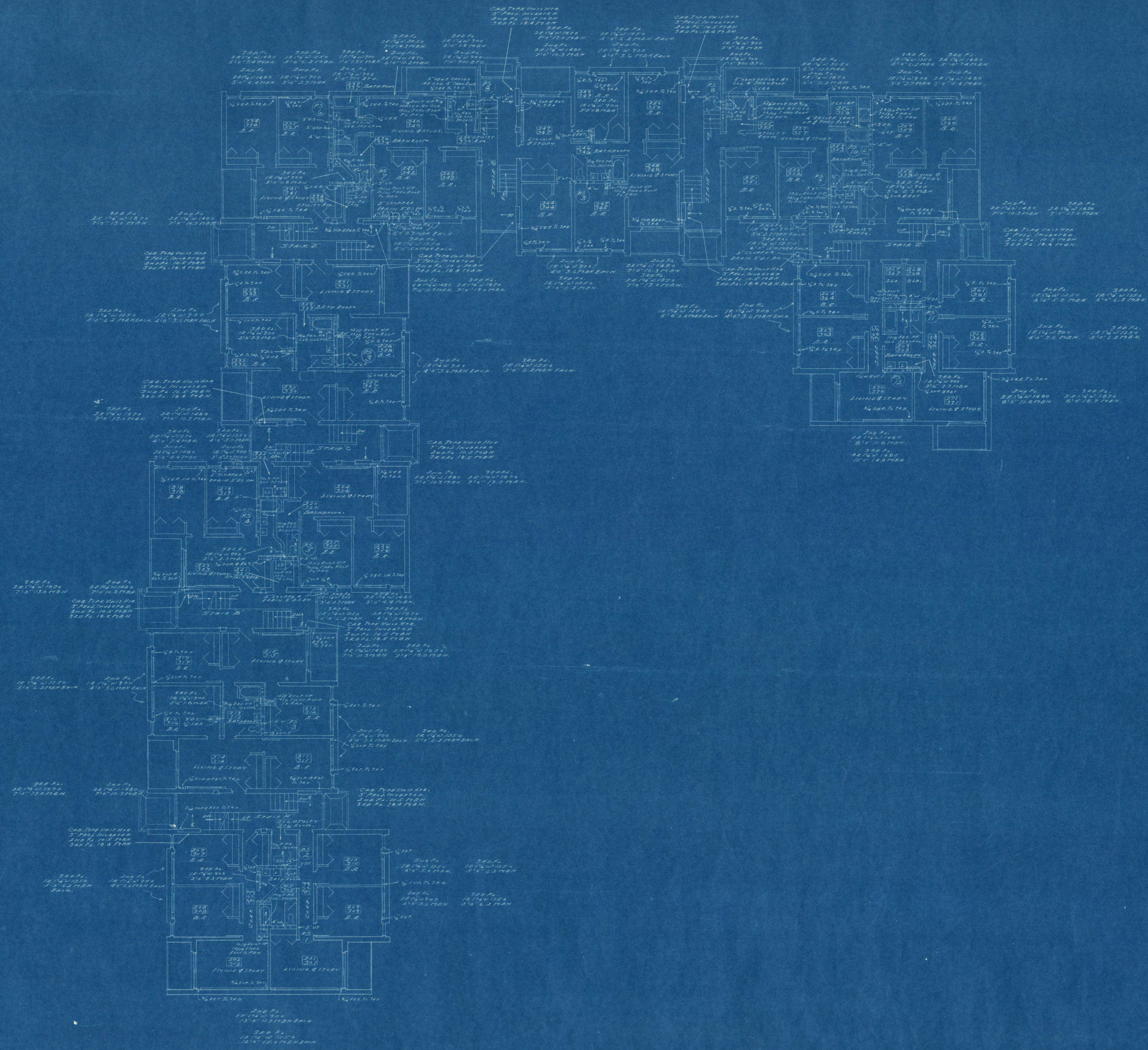


DIAGRAM OF PIPING TO CONVERTERS
& HOT WATER HEATING PUMPS
NO SCALE





COMMISSION NAME
 200 BED DORMITORY SERIES F-2A
 ST. CLOUD STATE COLLEGE ST. CLOUD MINNESOTA

SHEET TITLE
 SECOND & THIRD FLOOR PLAN
 SCALE 1/8" = 1'-0"

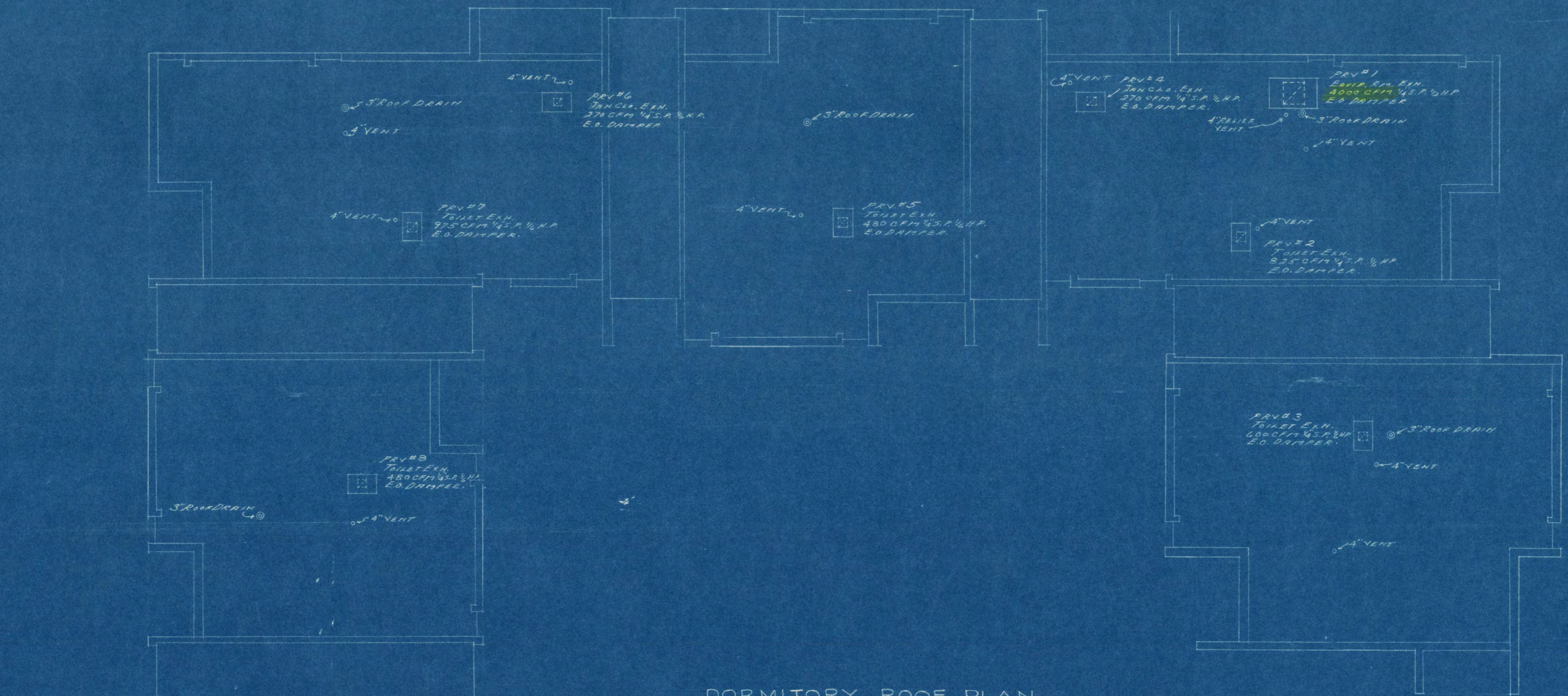
ORR-SCHELEN-MAYERON
 AND ASSOCIATES, INC.
 CONSULTING ENGINEERS
 104 CURRIE AVENUE, MINNEAPOLIS, MINN. 55403

COMM. NO.
 526-5
 DRAWN BY
 C.E.B.
 DATE
 10/6/1966

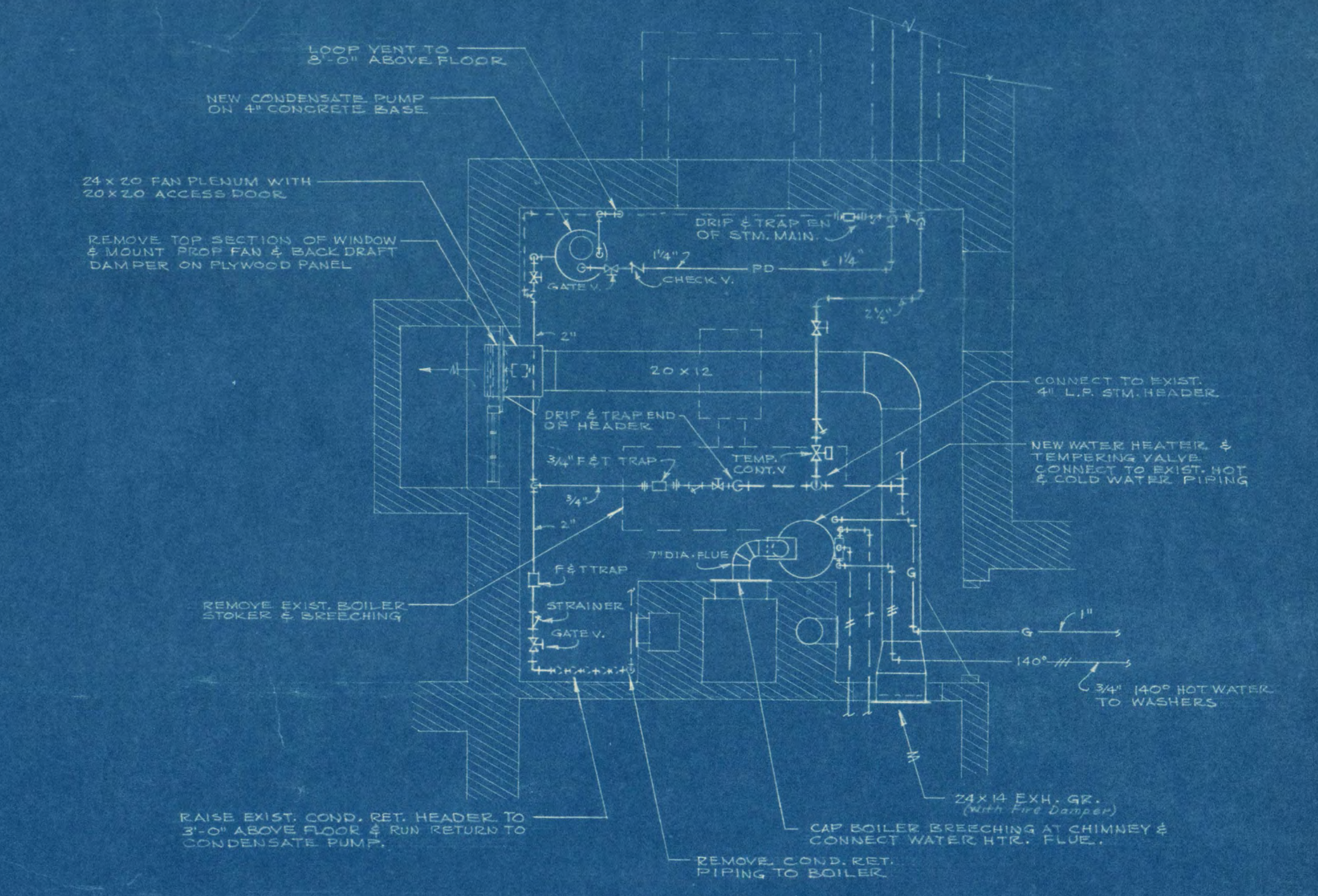
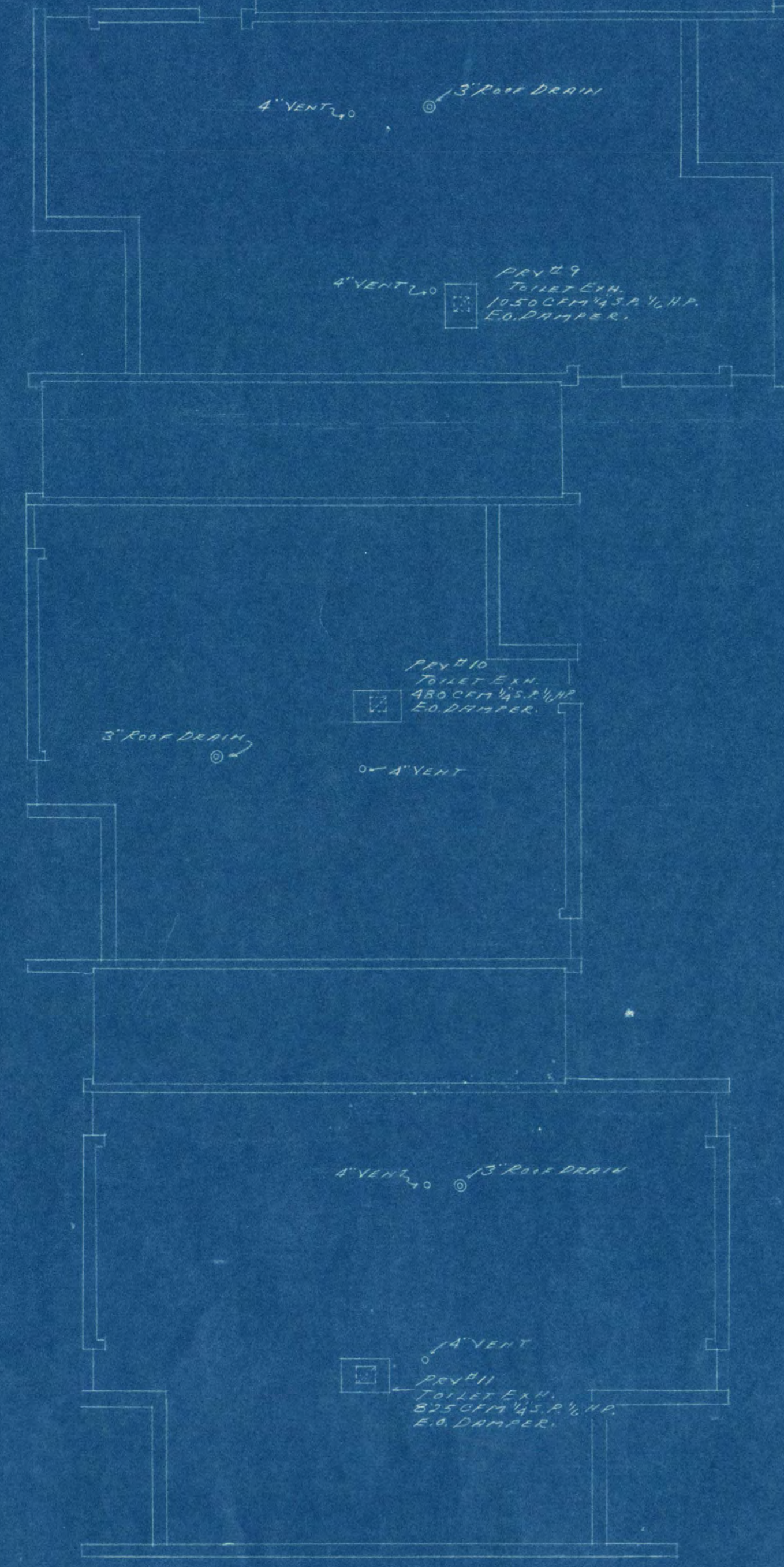


JACKSON-HAHN ASSOCIATES, INC.
 ARCHITECTS
 102 THIRD AVENUE SOUTH ST. CLOUD, MINNESOTA

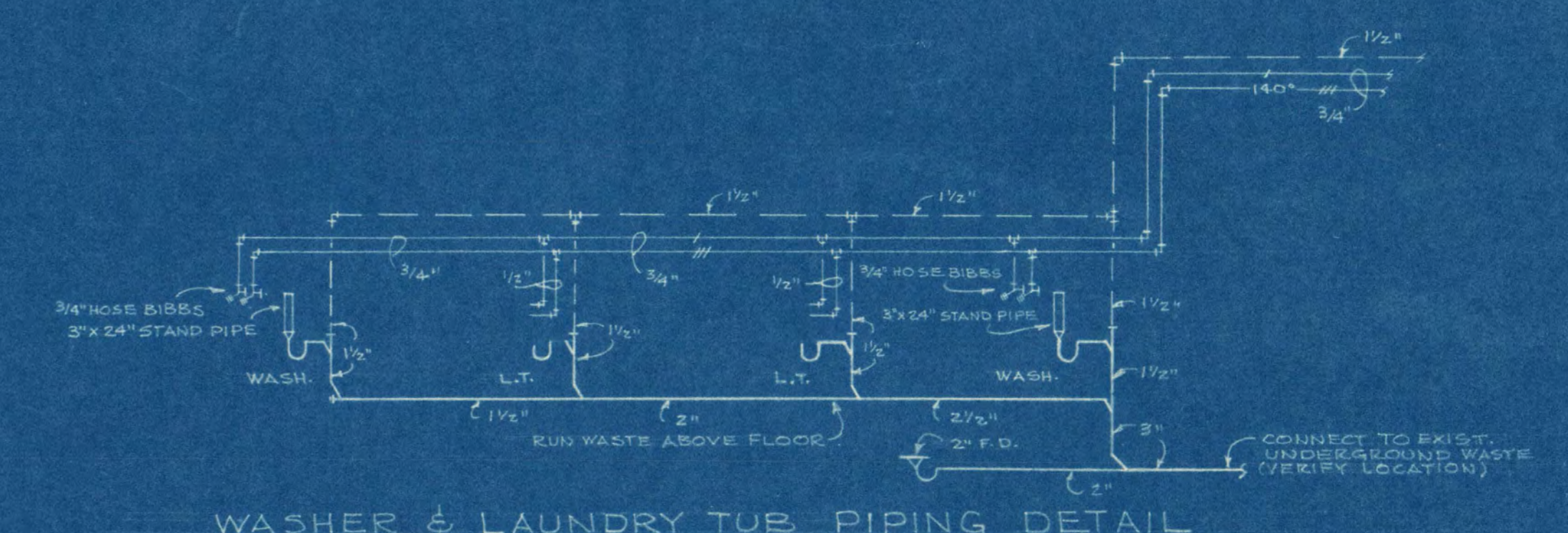
PROJECT NO.
 F-2A
 SHEET NO.
 M-4
 OF 6 SHEETS



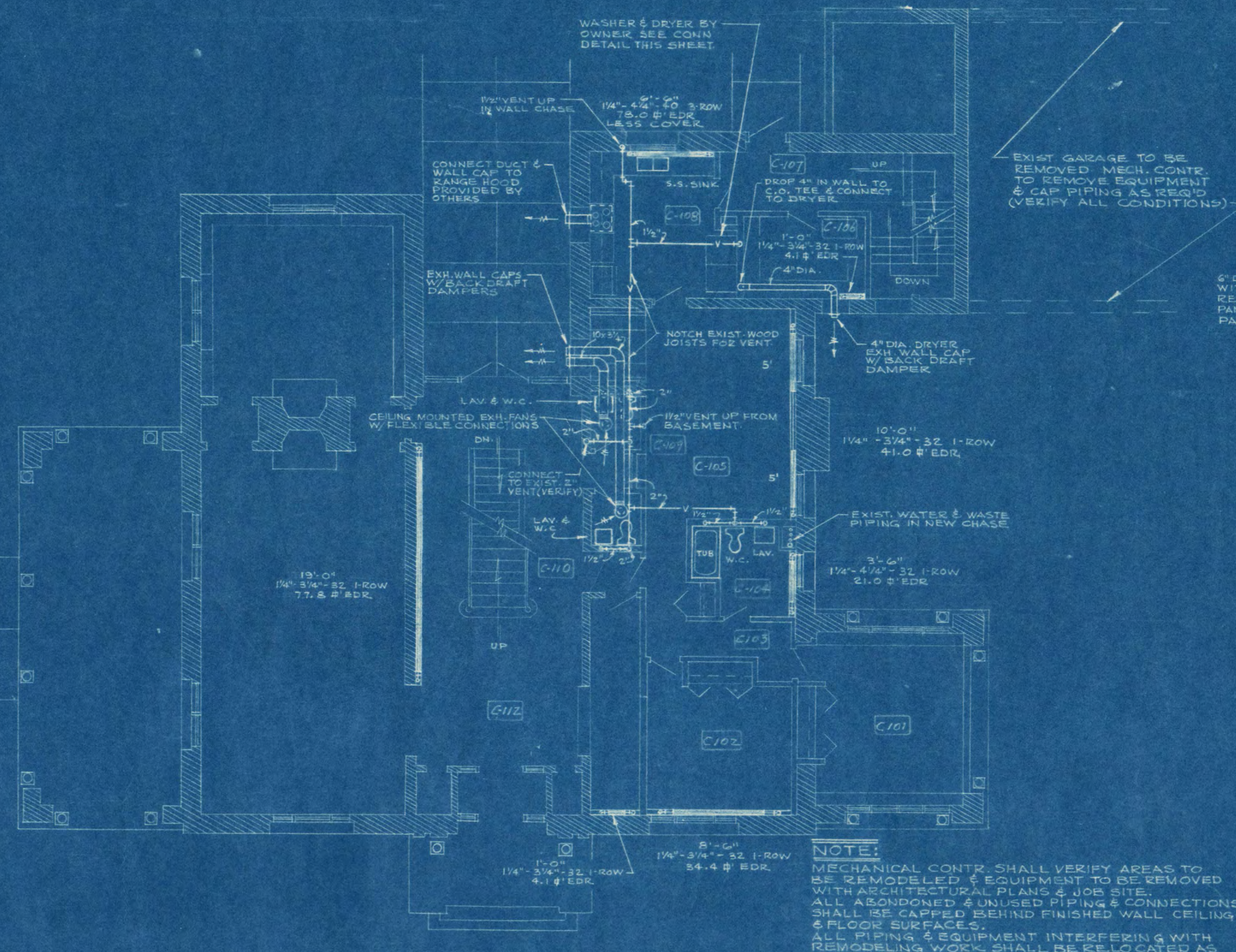
DORMITORY ROOF PLAN
SCALE: 1/8" = 1'-0"



BOILER ROOM PLAN
SCALE: 1/4" = 1'-0"



WASHER & LAUNDRY TUB PIPING DETAIL
NOT TO SCALE



FIRST FLOOR PLAN



BASEMENT FLOOR PLAN

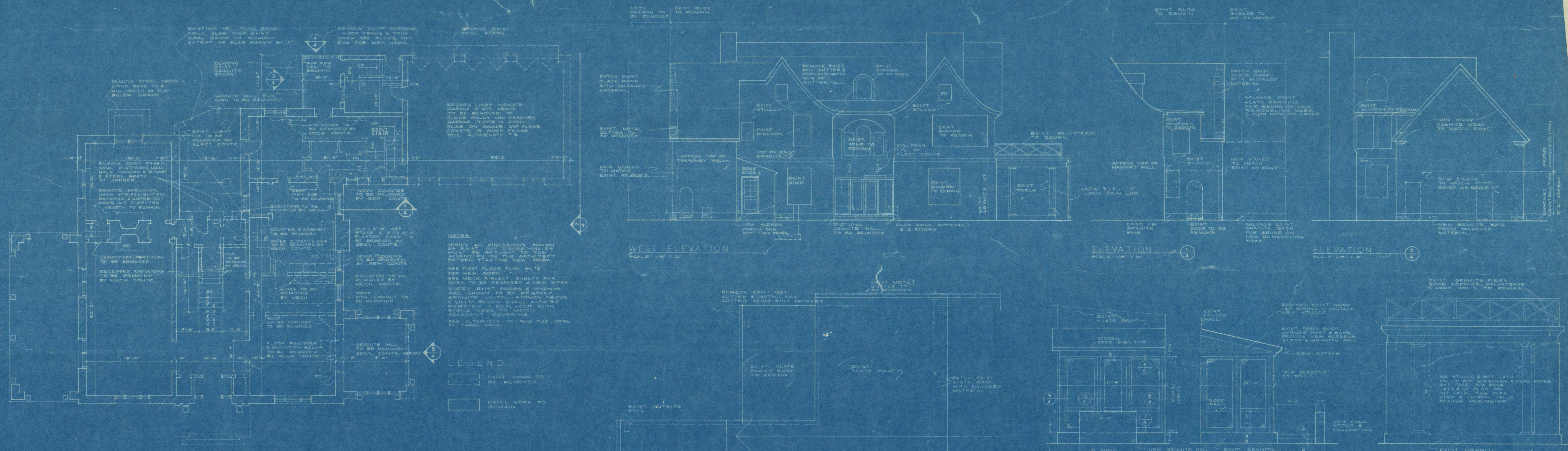
EXISTING CAROL HALL REMODELING
SCALE: 1/8" = 1'-0"

COMMISSION NAME	200 BED DORMITORY	SERIES	F-2A
ST. CLOUD STATE COLLEGE		ST. CLOUD	MINNESOTA

SHEET TITLE	EXISTING CAROL HALL REMODELING
-------------	--------------------------------

ORR-SCHLEIN-MAYERSON AND ASSOCIATES, INC. CONSULTING ENGINEERS 104 CLARKE AVENUE, MINNEAPOLIS, MINN. 55403	COMM NO. 566-5 DRAWN BY G.B. H.C. DATE August 1, 1966
--	--

JACKSON-HAHN ASSOCIATES, INC. ARCHITECTS 102 THIRD AVENUE SOUTH ST. CLOUD, MINNESOTA	PROJECT NO. F-2A SHEET NO. M5 OF 6 SHEETS
---	---



NOTES

VERIFY ALL DIMENSIONS SHOWN ON THIS SHEET AGAINST THE ARCHITECT'S RECORD DRAWINGS FOR THE EXISTING BUILDING. WHERE DIMENSIONS DO NOT MATCH, THE ARCHITECT'S RECORD DRAWINGS SHALL PREVAIL.

WHERE EXISTING ROOFING IS TO BE REMOVED, A NEW ROOF SHALL BE INSTALLED AS SHOWN ON SHEET R-1.

WHERE EXISTING ROOFING IS TO BE REPAIRED, THE REPAIRS SHALL BE DONE IN ACCORDANCE WITH THE MANUFACTURER'S INSTRUCTIONS.

WHERE EXISTING ROOFING IS TO BE MAINTAINED, THE MAINTENANCE SHALL BE DONE IN ACCORDANCE WITH THE MANUFACTURER'S INSTRUCTIONS.

WHERE EXISTING ROOFING IS TO BE REPLACED, THE REPLACEMENT SHALL BE DONE IN ACCORDANCE WITH THE MANUFACTURER'S INSTRUCTIONS.

WHERE EXISTING ROOFING IS TO BE REPAIRED, THE REPAIRS SHALL BE DONE IN ACCORDANCE WITH THE MANUFACTURER'S INSTRUCTIONS.

WHERE EXISTING ROOFING IS TO BE MAINTAINED, THE MAINTENANCE SHALL BE DONE IN ACCORDANCE WITH THE MANUFACTURER'S INSTRUCTIONS.

WHERE EXISTING ROOFING IS TO BE REPLACED, THE REPLACEMENT SHALL BE DONE IN ACCORDANCE WITH THE MANUFACTURER'S INSTRUCTIONS.

LEGEND

EXIST WORK TO BE REMOVED

EXIST WORK TO REMAIN

NOTES

WHERE EXISTING ROOFING IS TO BE REMOVED, A NEW ROOF SHALL BE INSTALLED AS SHOWN ON SHEET R-1.

WHERE EXISTING ROOFING IS TO BE REPAIRED, THE REPAIRS SHALL BE DONE IN ACCORDANCE WITH THE MANUFACTURER'S INSTRUCTIONS.

WHERE EXISTING ROOFING IS TO BE MAINTAINED, THE MAINTENANCE SHALL BE DONE IN ACCORDANCE WITH THE MANUFACTURER'S INSTRUCTIONS.

WHERE EXISTING ROOFING IS TO BE REPLACED, THE REPLACEMENT SHALL BE DONE IN ACCORDANCE WITH THE MANUFACTURER'S INSTRUCTIONS.

WHERE EXISTING ROOFING IS TO BE REPAIRED, THE REPAIRS SHALL BE DONE IN ACCORDANCE WITH THE MANUFACTURER'S INSTRUCTIONS.

WHERE EXISTING ROOFING IS TO BE MAINTAINED, THE MAINTENANCE SHALL BE DONE IN ACCORDANCE WITH THE MANUFACTURER'S INSTRUCTIONS.

WHERE EXISTING ROOFING IS TO BE REPLACED, THE REPLACEMENT SHALL BE DONE IN ACCORDANCE WITH THE MANUFACTURER'S INSTRUCTIONS.

ROOM FINISH SCHEDULE NOTES

NOTE THAT ONLY EXTERIOR PAINTING IS REQUIRED & ON NEW SHEET METAL WORK & NEW STUCCO WORK.

DOOR SCHEDULE

NO.	DOOR	WIDTH	HEIGHT	THICK	TYPE	FRAME	GLASS	TRANSOM	REMARKS
C-01	3'0" x 7'0" x 1 1/2"	C-8	H.M.	D-3					EXIST. METAL DOOR
C-02	3'0" x 7'0" x 1 1/2"	C-8	H.M.	D-3					EXIST. METAL DOOR
C-03	3'0" x 7'0" x 1 1/2"	C-8	H.M.	D-3					EXIST. METAL DOOR
C-04	3'0" x 7'0" x 1 1/2"	C-8	H.M.	D-3					EXIST. METAL DOOR
C-05	3'0" x 7'0" x 1 1/2"	C-8	H.M.	D-3					EXIST. METAL DOOR
C-06	3'0" x 7'0" x 1 1/2"	C-8	H.M.	D-3					EXIST. METAL DOOR
C-07	3'0" x 7'0" x 1 1/2"	C-8	H.M.	D-3					EXIST. METAL DOOR
C-08	3'0" x 7'0" x 1 1/2"	C-8	H.M.	D-3					EXIST. METAL DOOR
C-09	3'0" x 7'0" x 1 1/2"	C-8	H.M.	D-3					EXIST. METAL DOOR
C-10	3'0" x 7'0" x 1 1/2"	C-8	H.M.	D-3					EXIST. METAL DOOR
C-11	3'0" x 7'0" x 1 1/2"	C-8	H.M.	D-3					EXIST. METAL DOOR
C-12	3'0" x 7'0" x 1 1/2"	C-8	H.M.	D-3					EXIST. METAL DOOR
C-13	3'0" x 7'0" x 1 1/2"	C-8	H.M.	D-3					EXIST. METAL DOOR
C-14	3'0" x 7'0" x 1 1/2"	C-8	H.M.	D-3					EXIST. METAL DOOR
C-15	3'0" x 7'0" x 1 1/2"	C-8	H.M.	D-3					EXIST. METAL DOOR
C-16	3'0" x 7'0" x 1 1/2"	C-8	H.M.	D-3					EXIST. METAL DOOR
C-17	3'0" x 7'0" x 1 1/2"	C-8	H.M.	D-3					EXIST. METAL DOOR
C-18	3'0" x 7'0" x 1 1/2"	C-8	H.M.	D-3					EXIST. METAL DOOR
C-19	3'0" x 7'0" x 1 1/2"	C-8	H.M.	D-3					EXIST. METAL DOOR
C-20	3'0" x 7'0" x 1 1/2"	C-8	H.M.	D-3					EXIST. METAL DOOR

EXISTING CAROL HALL BASEMENT

NO.	SPACE	FLOORING	BASE	WALLS	CEILING	FINISH	REMARKS
C-01	LAUNDRY RM	CONCRETE	CONCRETE	CONCRETE	CONCRETE	CONCRETE	
C-02	MECHANICAL RM	CONCRETE	CONCRETE	CONCRETE	CONCRETE	CONCRETE	
C-03	STORAGE RM	CONCRETE	CONCRETE	CONCRETE	CONCRETE	CONCRETE	
C-04	BEDROOM	CONCRETE	CONCRETE	CONCRETE	CONCRETE	CONCRETE	
C-05	BEDROOM	CONCRETE	CONCRETE	CONCRETE	CONCRETE	CONCRETE	
C-06	HALL	CONCRETE	CONCRETE	CONCRETE	CONCRETE	CONCRETE	
C-07	BATHROOM	CONCRETE	CONCRETE	CONCRETE	CONCRETE	CONCRETE	
C-08	LIVING RM	CONCRETE	CONCRETE	CONCRETE	CONCRETE	CONCRETE	
C-09	WOMEN'S TOILET	CONCRETE	CONCRETE	CONCRETE	CONCRETE	CONCRETE	
C-10	WOMEN'S TOILET	CONCRETE	CONCRETE	CONCRETE	CONCRETE	CONCRETE	
C-11	OFFICE	CONCRETE	CONCRETE	CONCRETE	CONCRETE	CONCRETE	
C-12	OFFICE	CONCRETE	CONCRETE	CONCRETE	CONCRETE	CONCRETE	
C-13	OFFICE	CONCRETE	CONCRETE	CONCRETE	CONCRETE	CONCRETE	
C-14	CONFERENCE	CONCRETE	CONCRETE	CONCRETE	CONCRETE	CONCRETE	
C-15	POWDER	CONCRETE	CONCRETE	CONCRETE	CONCRETE	CONCRETE	
C-16	STORAGE	CONCRETE	CONCRETE	CONCRETE	CONCRETE	CONCRETE	
C-17	SCREEN PORCH	CONCRETE	CONCRETE	CONCRETE	CONCRETE	CONCRETE	
C-18	STAIR H	CONCRETE	CONCRETE	CONCRETE	CONCRETE	CONCRETE	
C-19	STAIR U	CONCRETE	CONCRETE	CONCRETE	CONCRETE	CONCRETE	
C-20	STAIR U	CONCRETE	CONCRETE	CONCRETE	CONCRETE	CONCRETE	

BASEMENT PLAN of EXISTING CAROL HALL
SCALE 1/8" = 1'-0"