

NOTE:
 4" HIGH PRESSURE
 STEAM AND 3" PUMP
 DISCHARGE SHALL BE
 HUNG ON THE CEILING OF
 THE TUNNEL, NEXT TO EAST WALL
 ONLY.
 THE CLOCK AND SIGNAL SERVICE
 SHALL PARALLEL ELECTRIC SERVICE
 THROUGH THE TUNNEL.

THESE CONDUITS SHALL FOLLOW THE WEST WALL
 OF THE SCENERY STORAGE ROOM - IT SHALL FOLLOW
 THE EAST WALL OF THE TUNNEL CROSSING OVER AFTER
 ENTERING THE TUNNEL.

NOTE:
 TAP ON TO THE PRIMARY
 WITH 3" x 3/8" CONDUITING
 6" x 3" BARE NEUTRAL RIN
 THRU CONDUIT TO FUSE
 DISCONNECTS & THEN IN
 2" CONDUIT TRAY TUNNEL
 TO NEW BUILDING.

NOTE:
 RUN 3" ILL
 3" ILL WIRE
 THRU EXISTING
 CONDUIT FROM
 CLOCK PANEL
 TO MASTER
 CLOCK IN
 GENERAL
 OFFICE.

PART PLAN
 BASEMENT - STEWART HALL
 SCALE: 1/8" = 1'-0"

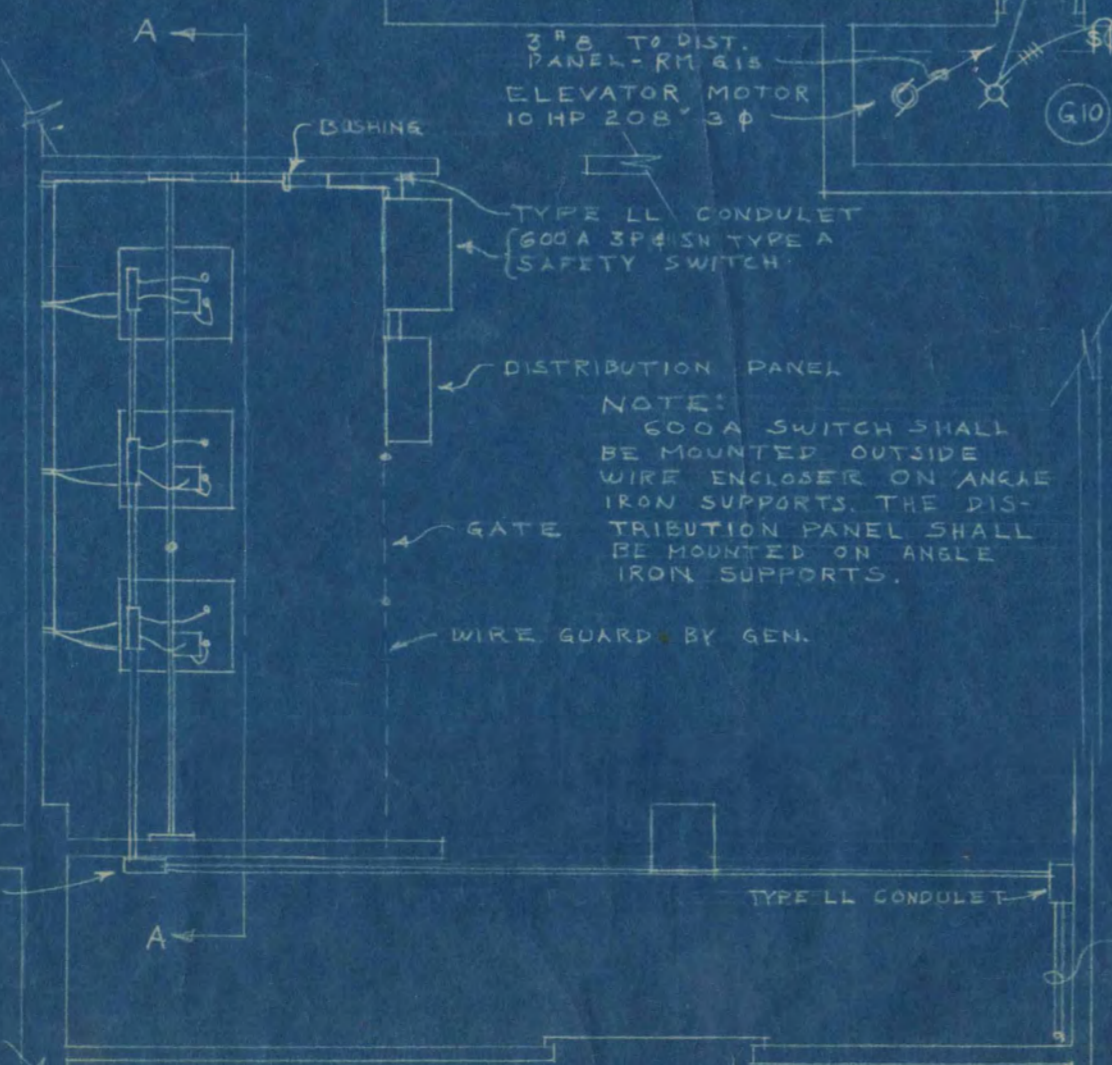
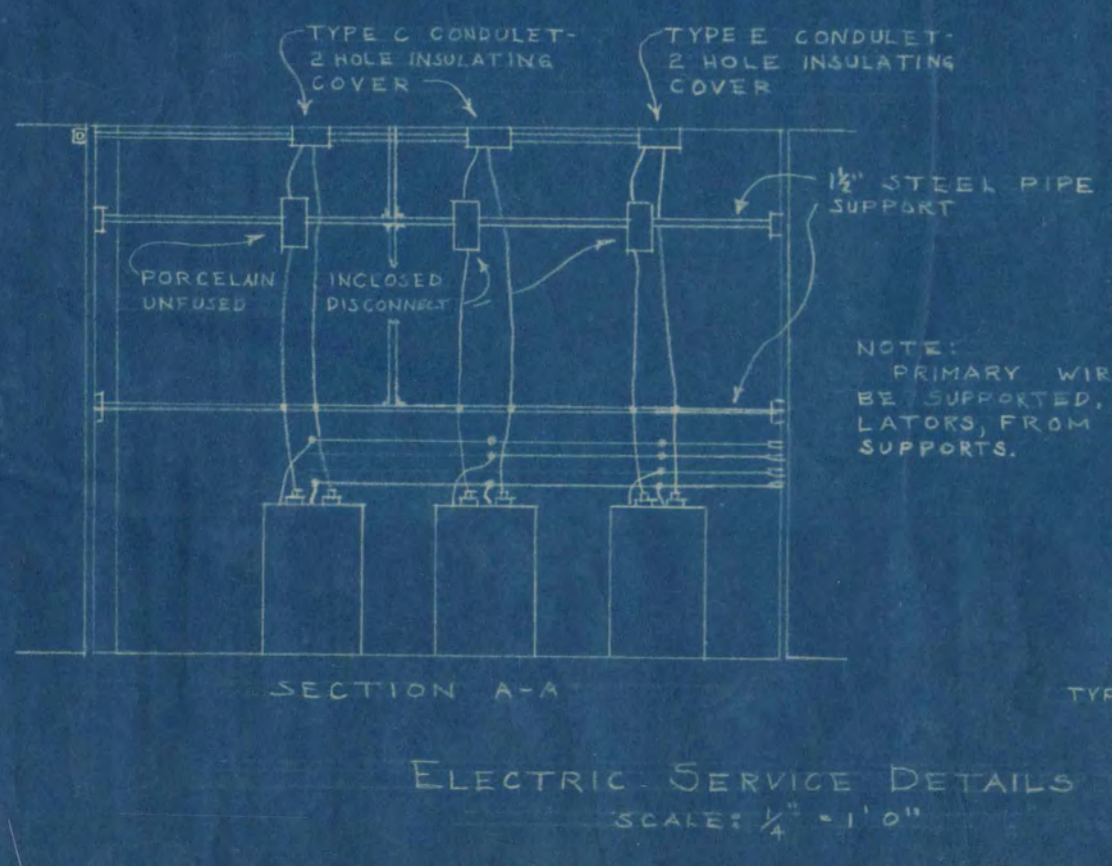
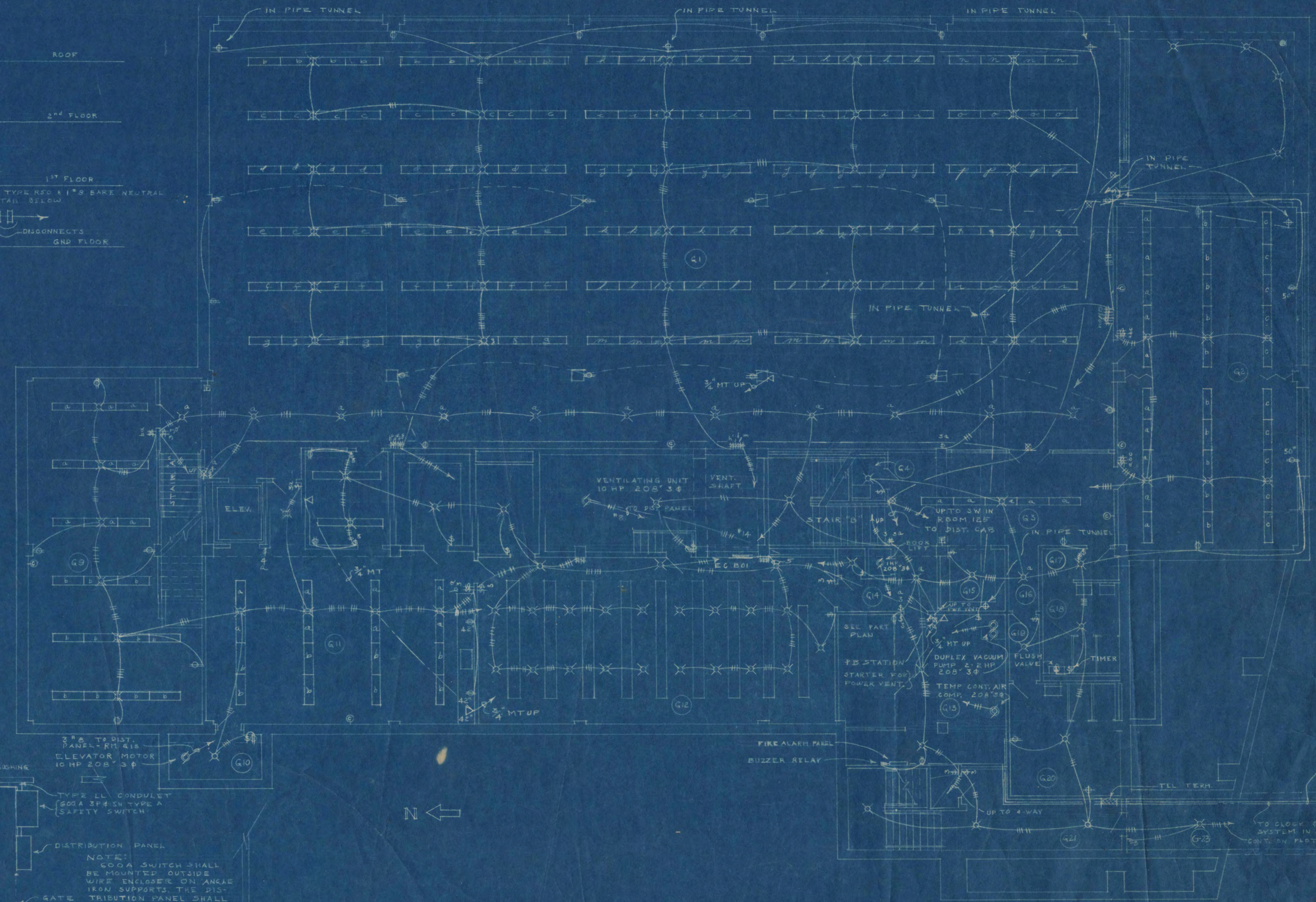
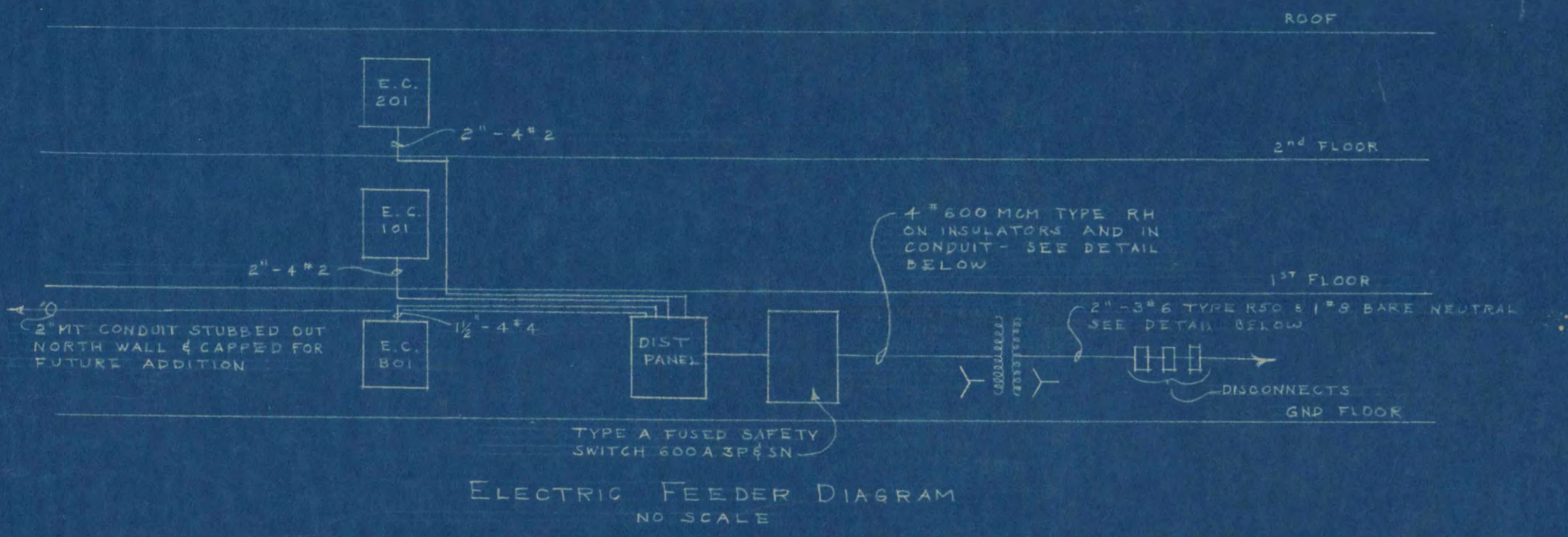
PLAN OF TRANSFORMER ROOM
 STEWART HALL
 SCALE: 1/2" = 1'-0"

PLOT PLAN
 SCALE: 1" = 30'

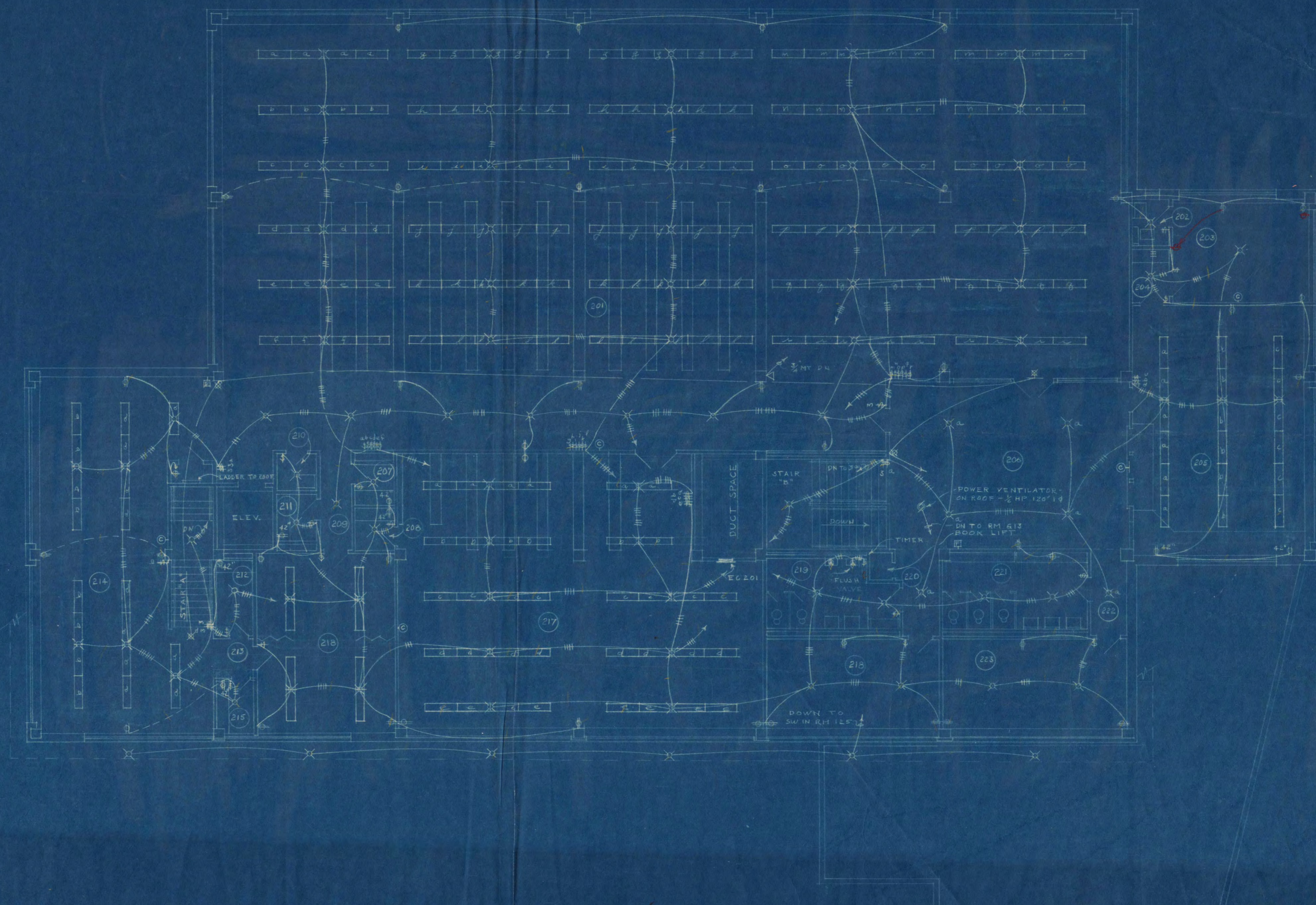
LIBRARY BUILDING STATE TEACHERS COLLEGE ST. CLOUD, MINNESOTA DEPT. OF ADMINISTRATION - ST. PAUL, MINNESOTA			
DATE	LOUIS C. PINAULT, ARCHITECT ST. CLOUD, MINNESOTA	PROJECT NO.	MEE 1
JUN 2, 1951	DAUGLASS A. MOORE, ENGINEER ST. PAUL, MINNESOTA	PROJECT	1318
COMPL. NO.	APPROVED BY <i>William M. Deane</i> REGISTERED PROFESSIONAL ENGINEER		
4920	APPROVED BY <i>[Signature]</i> REGISTERED PROFESSIONAL ENGINEER		
DESIGNED BY	DATE		
JTE			

I hereby certify that this plan, specification, or report was prepared by me or under my direct supervision and that I am a duly Registered Professional Engineer under the laws of the State of Minnesota.

Date: _____ Rev. No: _____



LIBRARY B. STATE TEACHER ST. CLOUD, MINN.



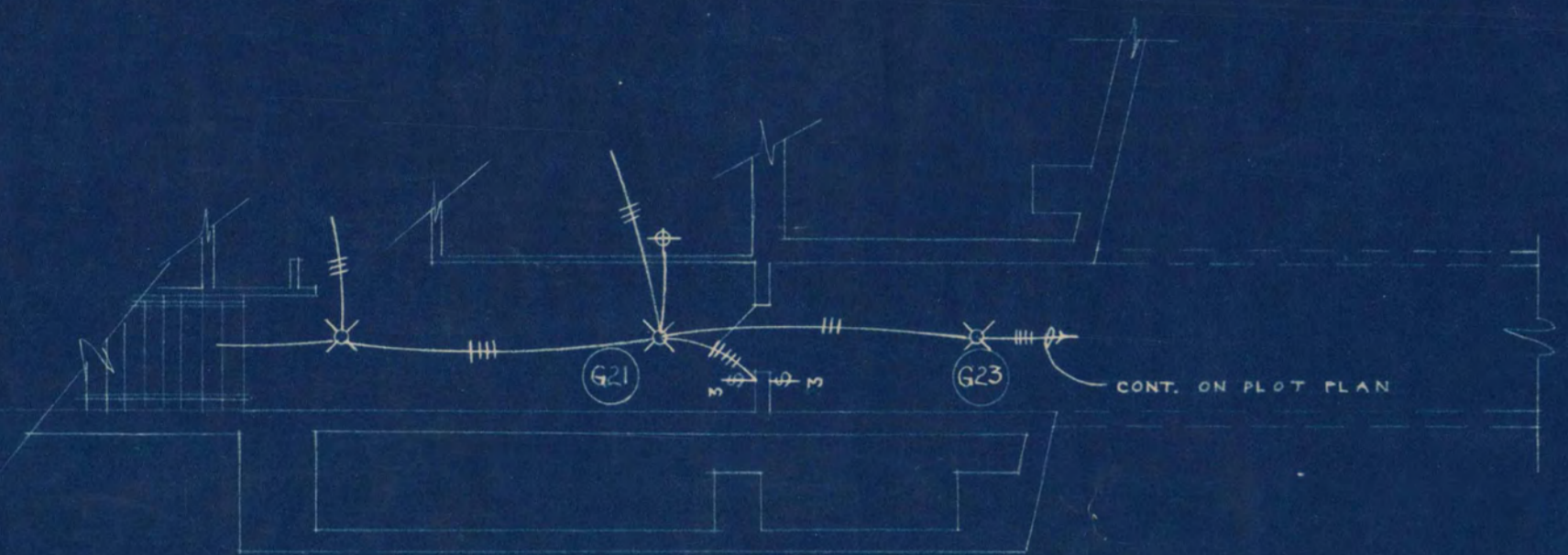
SECOND FLOOR ELECTRICAL PLAN
SCALE: 1/4" = 1'-0"

I hereby certify that this plan, specification, or report was prepared by me or under my direct supervision and that I am a duly Registered Professional Engineer under the laws of the State of Minnesota.

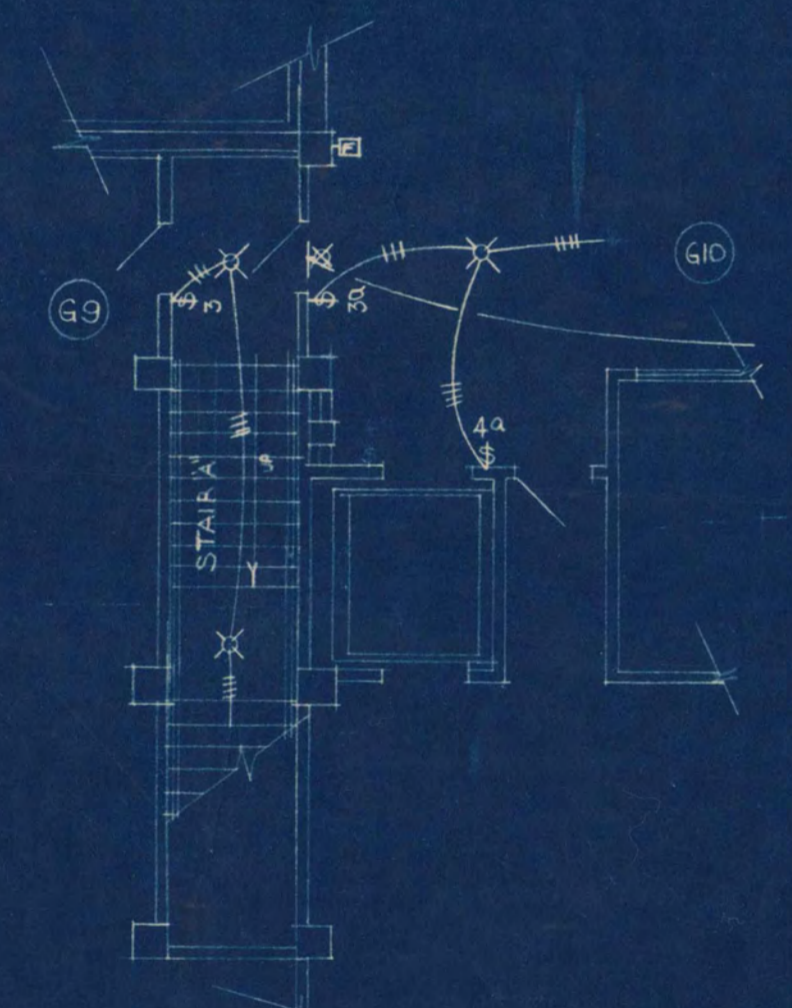
Date: JAN. 2, 1917 Reg. No. 1777

LIBRARY BUILDING
STATE TEACHERS COLLEGE
ST. CLOUD, MINNESOTA
DEPT. OF ADMINISTRATION - STATE OF MINNESOTA
ST. PAUL, MINNESOTA

DATE	JAN. 2, 1917	LOUIS C. RINAULT, ARCHITECT ST. CLOUD, MINNESOTA BAUSMAN & DOORE, ENGINEERS ST. PAUL, MINNESOTA	SHEET NO.	E-4
COPIES MADE	4900	APPROVED BY	4	PROJECT NO.
DRAWN BY	J. J. [Signature]	APPROVED BY	1318	

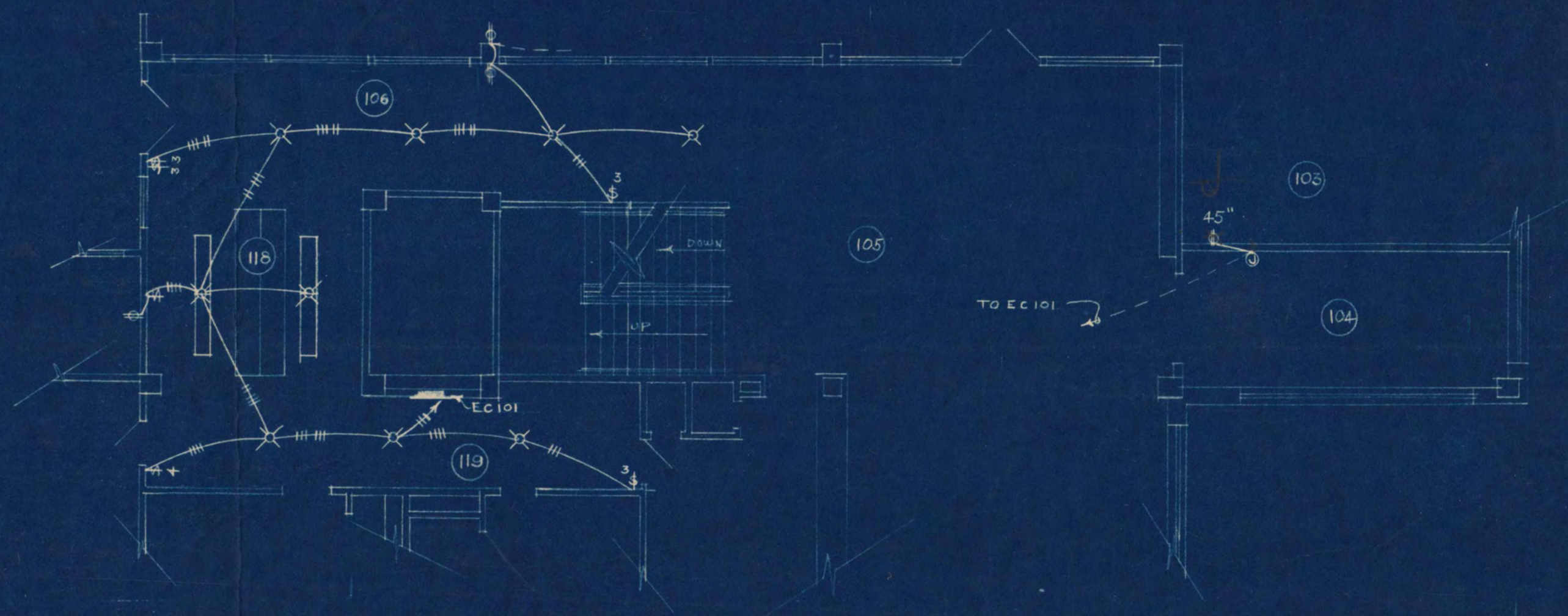


PART PLAN OF GROUND FLOOR
SHOWING
ROOMS G21 AND G23
SCALE: 1/8" = 1'-0"



PART PLAN OF GROUND FLOOR
SHOWING
ROOMS G9 AND G1 AND STAIRS A
SCALE: 1/8" = 1'-0"

NOTE:
THE ONLY WIRING SHOWN ON THIS SHEET IS THAT WHICH HAS BEEN CHANGED - ALL OTHER WIRING IN THE AFFECTED AREAS SHALL REMAIN UNCHANGED.



PART PLAN OF FIRST FLOOR
SHOWING
ROOMS 103, 104, 105, 106, 118, & 119
SCALE: 1/8" = 1'-0"

LIBRARY BUILDING STATE TEACHERS COLLEGE ST. CLOUD, MINNESOTA DEPT. OF ADMINISTRATION - STATE OF MINNESOTA ST. PAUL, MINNESOTA		
DATE FEB. 13 '51	LOUIS C. PINAULT, ARCHITECT ST. CLOUD, MINNESOTA GAUSMAN & MOORE, ENGINEERS ST. PAUL, MINNESOTA	SHEET NO. E-A1
COMPL. NO. 4920		PROJECT NO.
DRAWN BY <i>LR</i>		1318