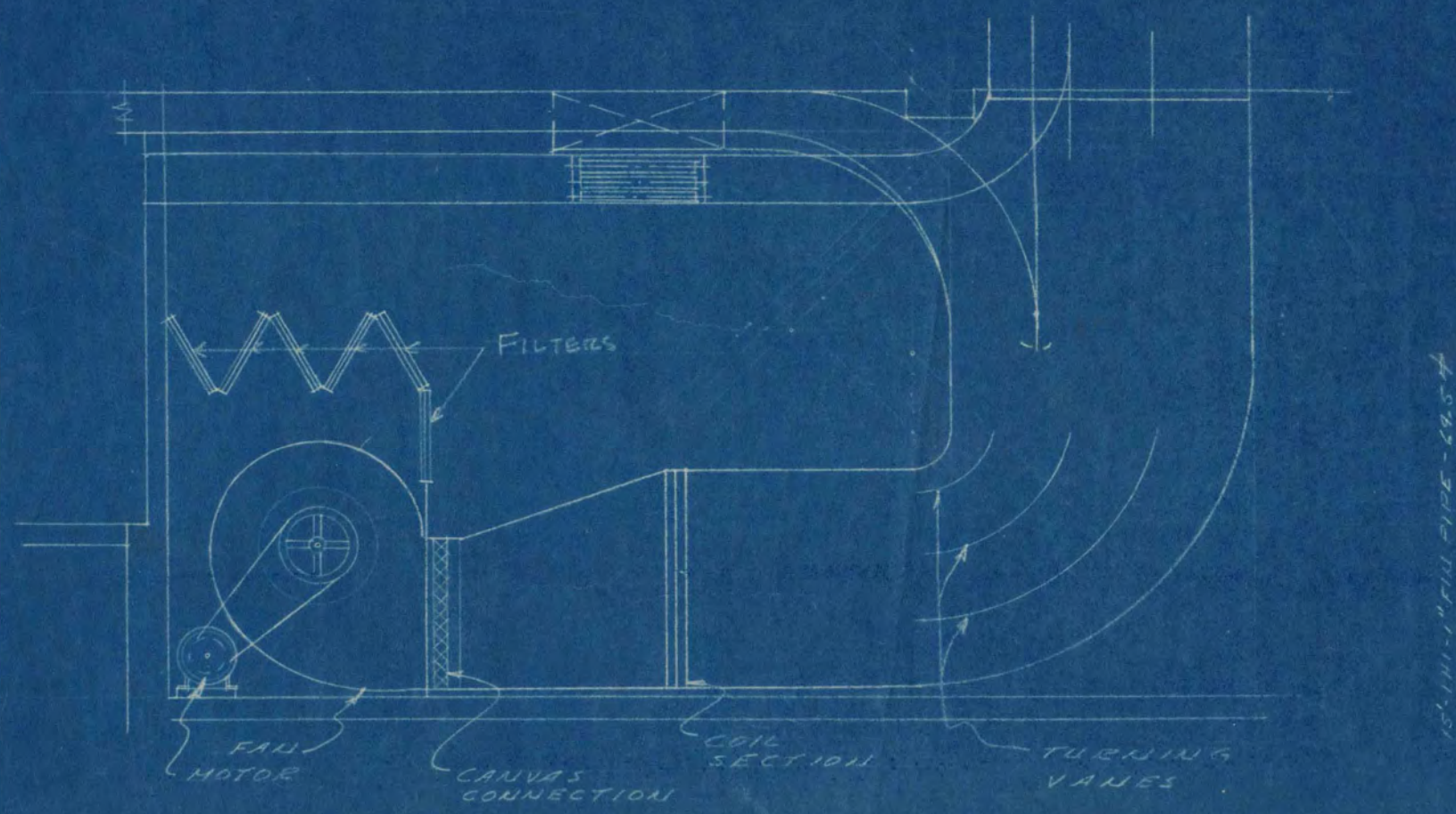
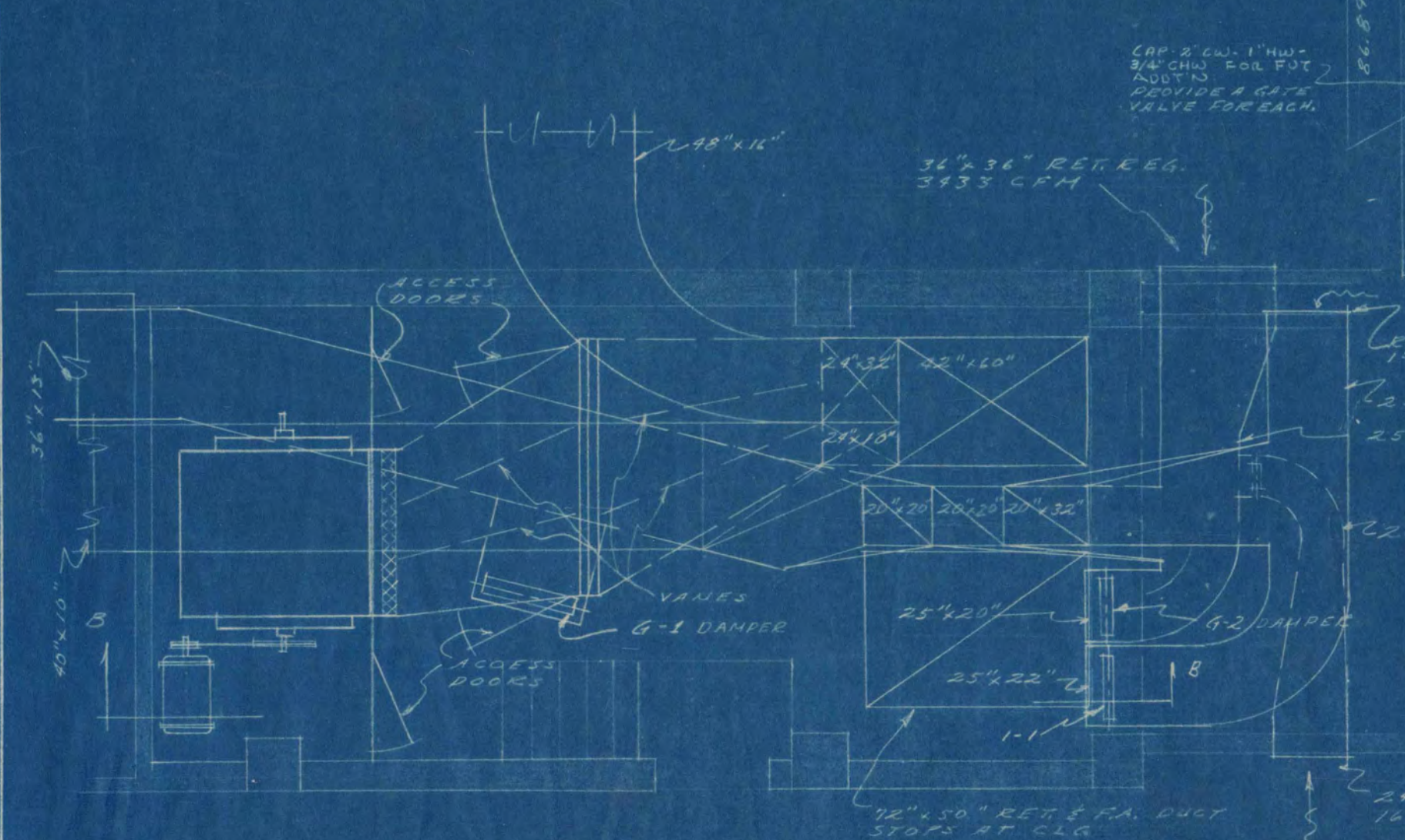


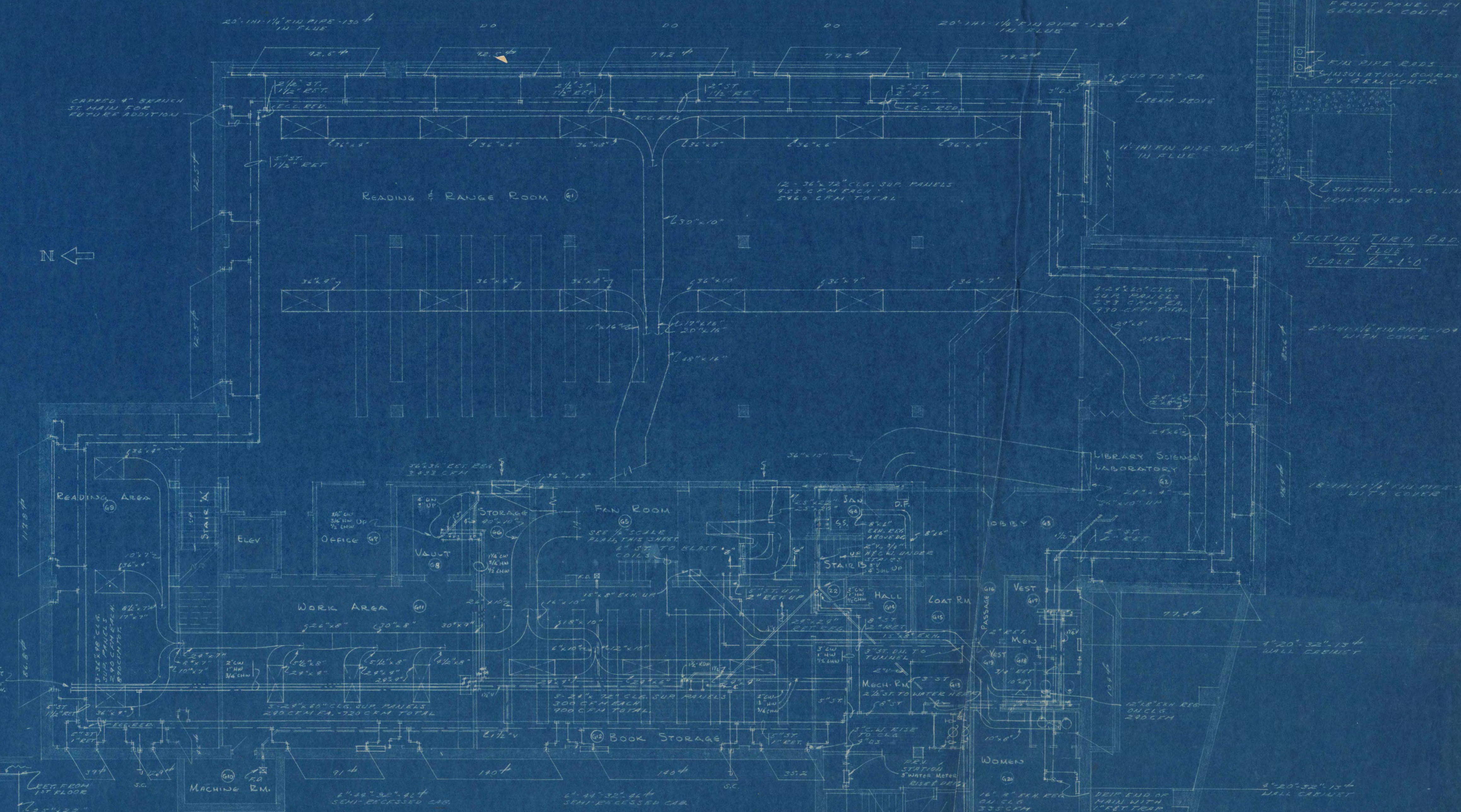
COIL CONNECTIONS DIAGRAM  
No. 5 SCALE



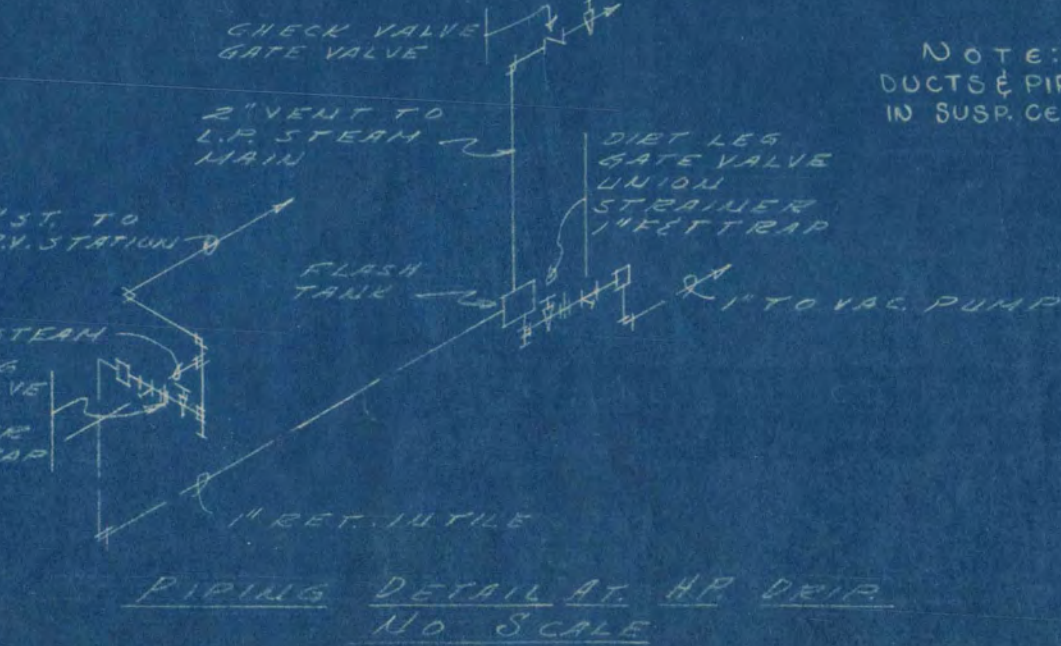
SECTION 18'-8"  
SCALE 1/8"=1'-0"



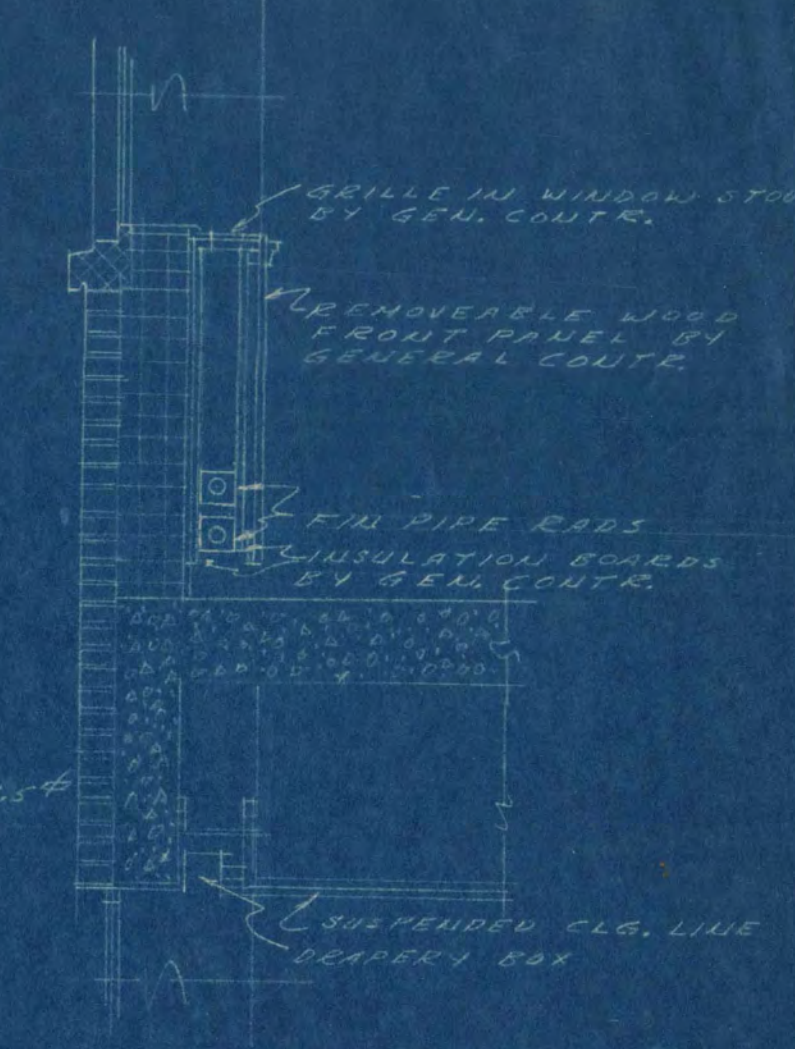
PLAN - FAN ROOM  
SCALE 1/8"=1'-0"



GROUND FLOOR PLAN  
SCALE 1/8"=1'-0"



PIPING DETAIL AT HP DE'S  
No. SCALE



SECTION THROUGH FLUE  
IN FLUE  
SCALE 1/2"=1'-0"

NOTE:  
DUCTS & PIPES TO BE CONCEALED  
IN SUSP. CEILING SPACE

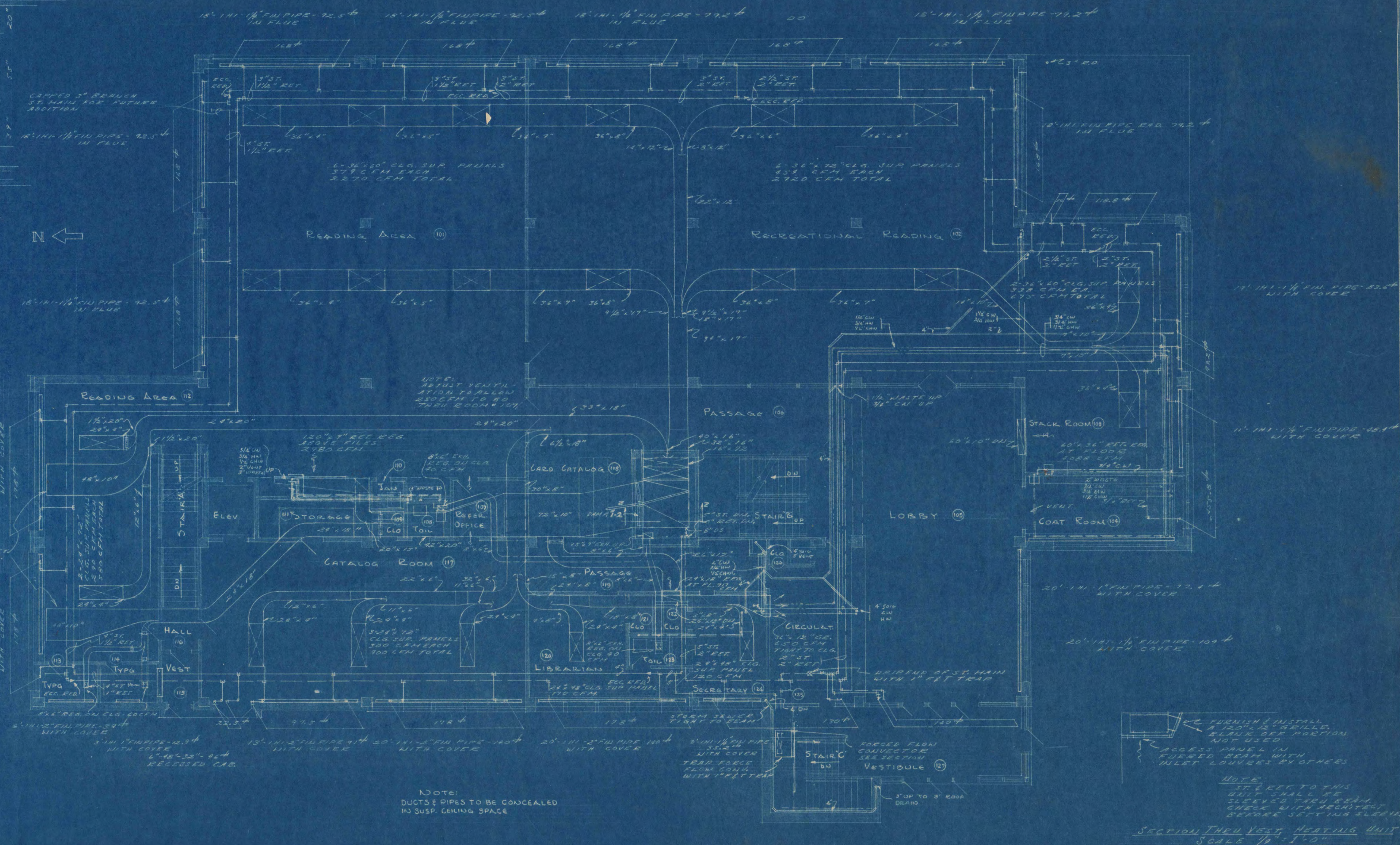
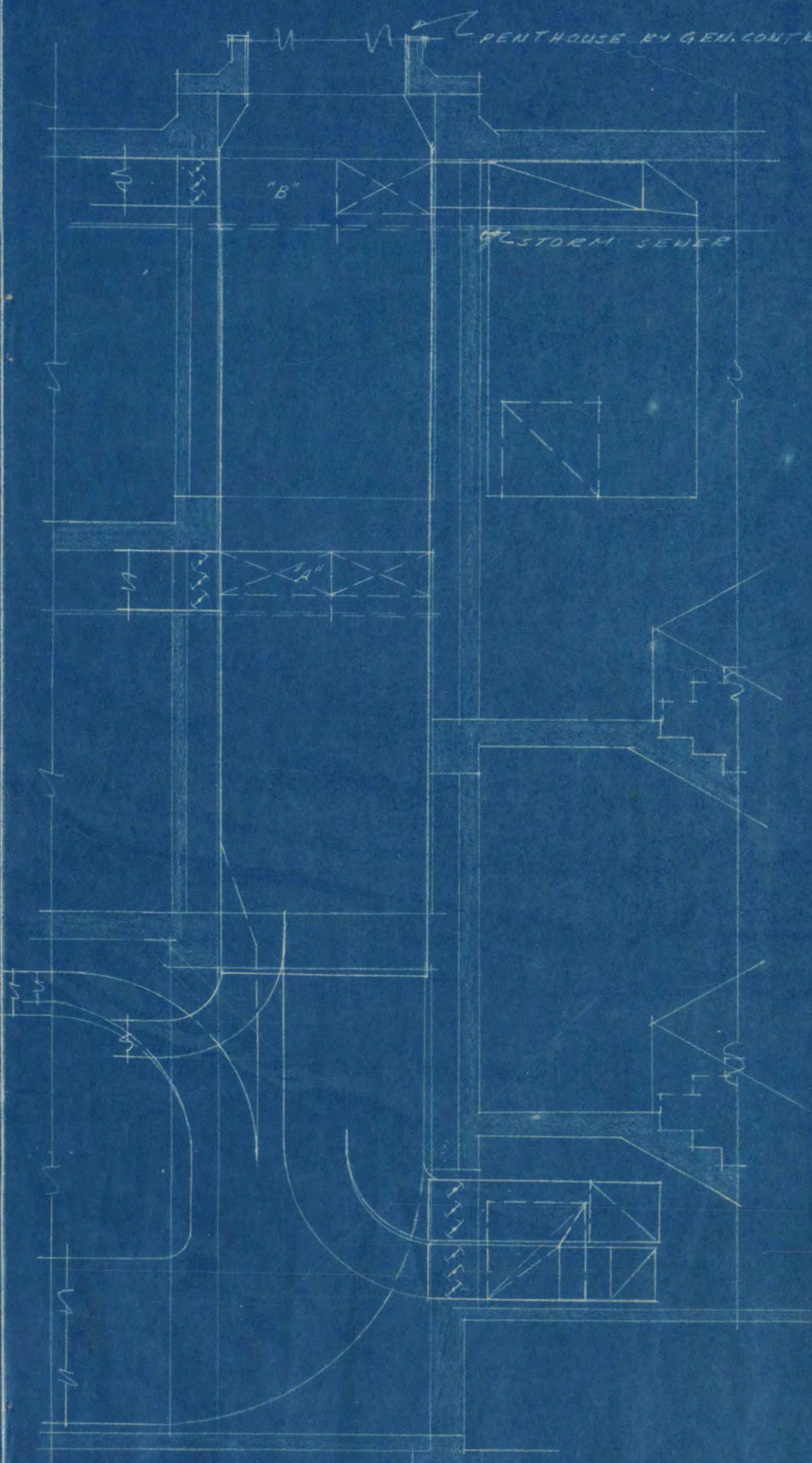
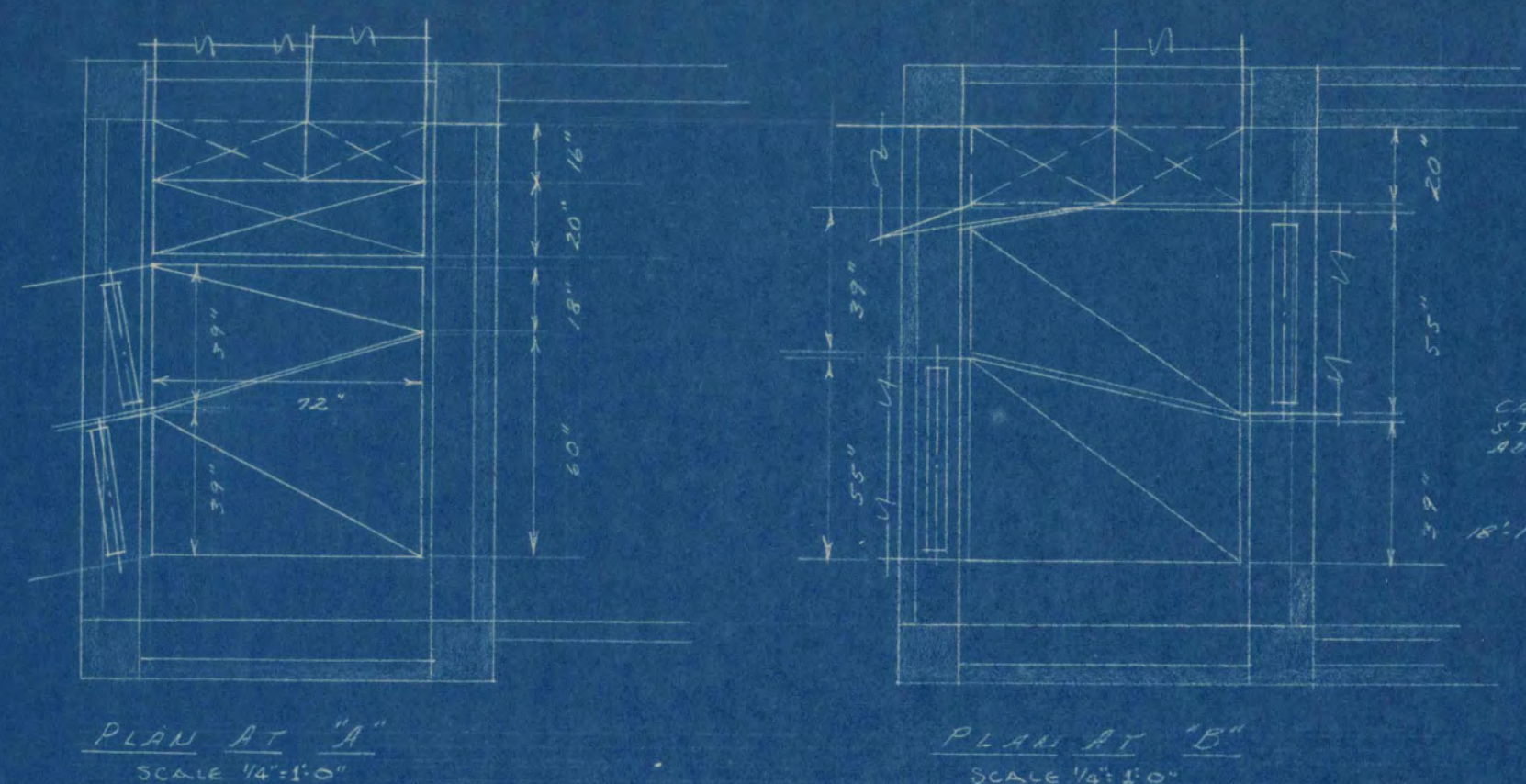
4" WATER SERVICE &  
5/8" PLOT PUMP  
FOR CONTINUATION

LIBRARY BUILDING  
STATE TEACHERS COLLEGE  
ST. CLOUD, MINNESOTA  
DEPT. OF ADMINISTRATION - STATE OF MINNESOTA  
ST. PAUL, MINNESOTA

DATE	LOUIS O. BINAULT, ARCHITECT	NO.
JAN 2, 1951	MINNESOTA	M-3
PROJECT	ROBERT A. MURPHY, ENGINEER	6
4920	UNIVERSITY	
Project by	<i>Louis O. Binault</i>	
1/2/51	<i>Robert A. Murphy</i>	
	<i>John M. O'Leary</i>	
	<i>R. G. Johnson</i>	

1011





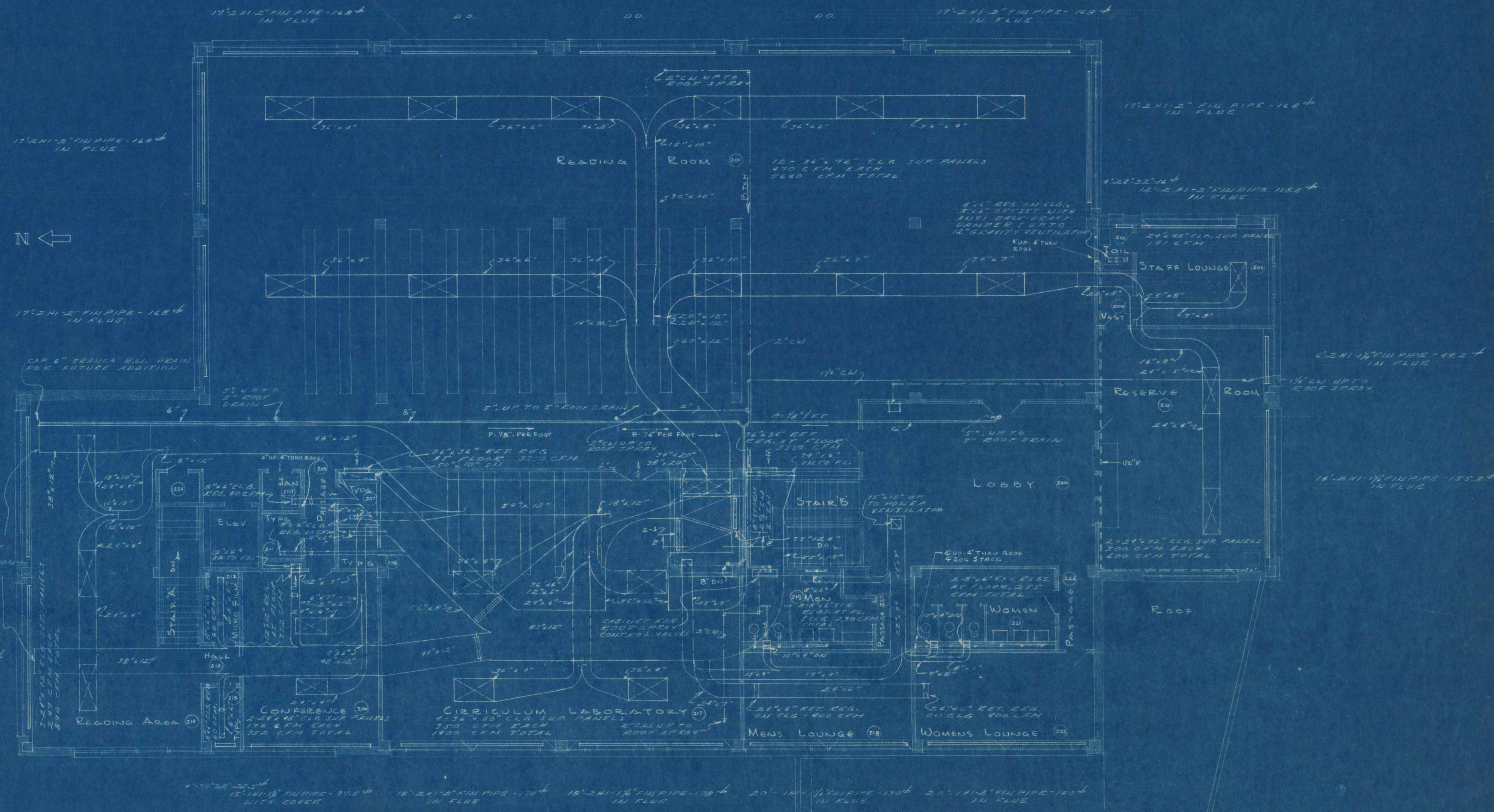
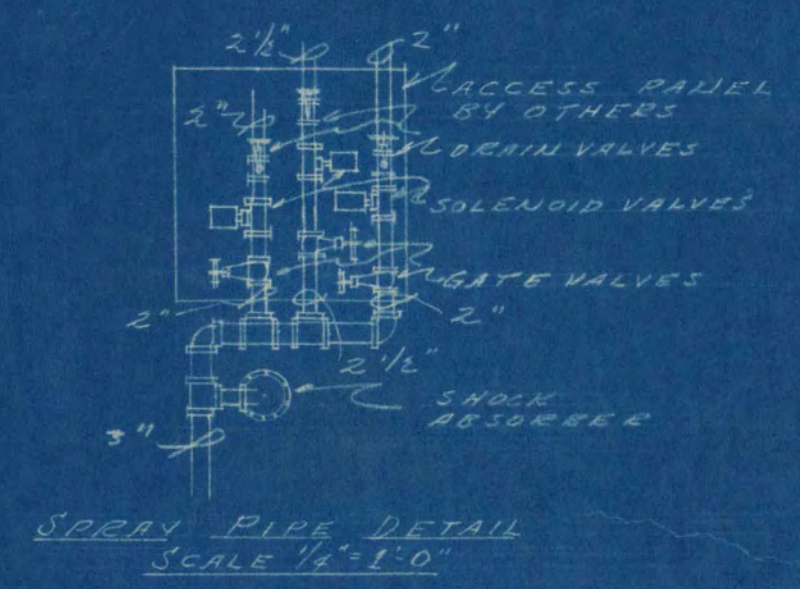
LIBRARY BUILDING STATE TEACHERS COLLEGE ST. CLOUD, MINNESOTA DEPT. OF ADMINISTRATION - STATE OF MINNESOTA ST. PAUL, MINNESOTA		
DATE	LOUIS C. PINAULT, ARCHITECT ST. CLOUD, MINNESOTA CASHMAN & MOORE, ENGINEERS ST. PAUL, MINNESOTA	CHECKED
JAN 2, 1951		M. A.
DESIGNED BY	APPROVED BY	PROJECT NO.
4520	<i>Curtis M. Chace</i>	6
DRAWN BY	APPROVED BY	PROJECT NO.
<i>R. J. [Signature]</i>		1318

I hereby certify that this plan, specification, or report was prepared by me or under my direct supervision and that I am a duly Registered Professional Engineer under the laws of the State of Minnesota.

*R. J. [Signature]*  
R. J. [Name]

Date: \_\_\_\_\_ Reg. No. 1011





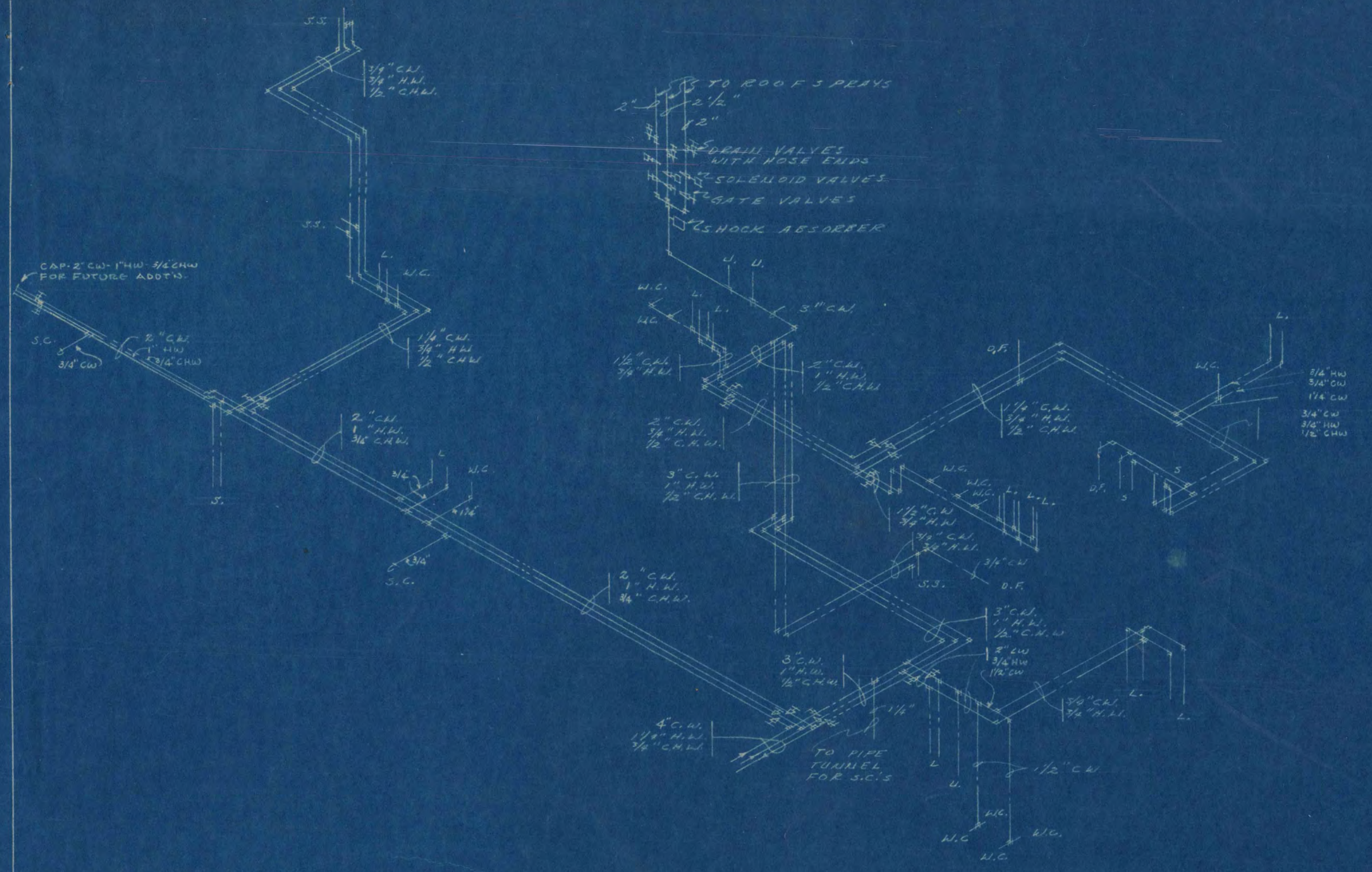
NOTES:  
DUCTS & PIPES TO BE CONCEALED  
IN SUSP. CEILING SPACE

SECOND FLOOR PLAN  
Scale: 1/8" = 1'-0"

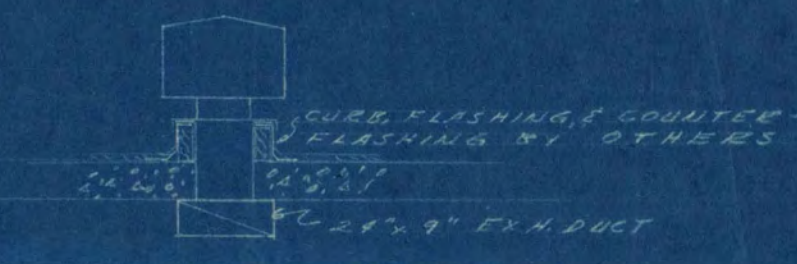
I hereby certify that this plan, specification, or report was prepared by me or under my direct supervision and that I am a duly Registered Professional Engineer under the laws of the State of Minnesota.  
*C. E. Kuczmarski*  
Date: \_\_\_\_\_ Reg. No. 1911

LIBRARY BUILDING STATE TEACHERS COLLEGE ST. CLOUD, MINNESOTA DEPT. OF ADMINISTRATION - STATE OF MINNESOTA ST. PAUL, MINNESOTA			
DATE	LOUIS C. PINAULT, ARCHITECT ST. CLOUD, MINNESOTA	CHASER NO.	
JULY 2, 1951	GAUSSMAN & MOORE, ENGINEERS ST. PAUL, MINNESOTA	11-5	
CONTRACT NO.	APPROVED BY: <i>John H. ...</i>	6	
4950	APPROVED BY: <i>Charles M. Olver</i>	10	
DRAWN BY: <i>J. J. ...</i>	APPROVED BY: <i>R. J. ...</i>	19	

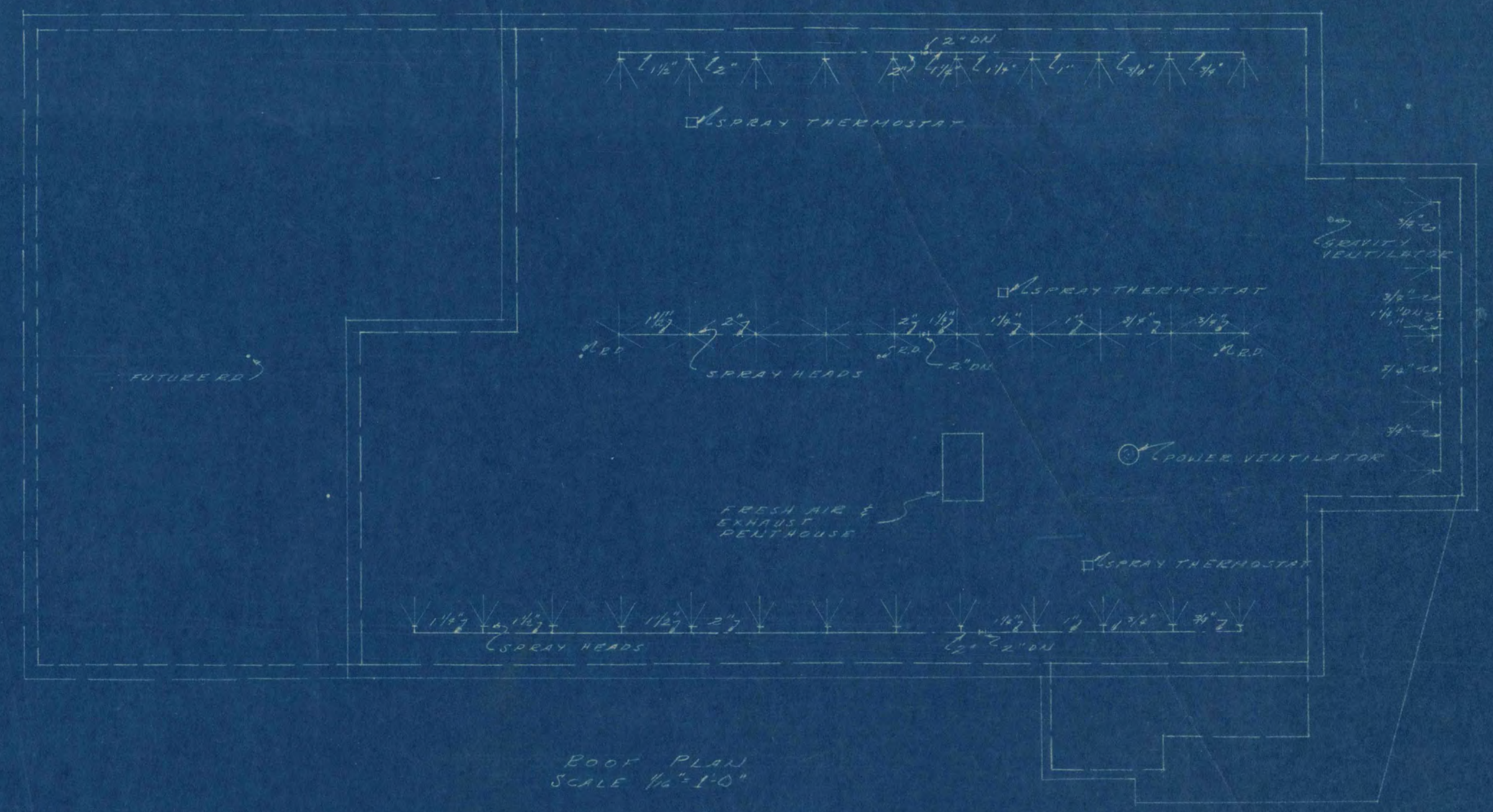




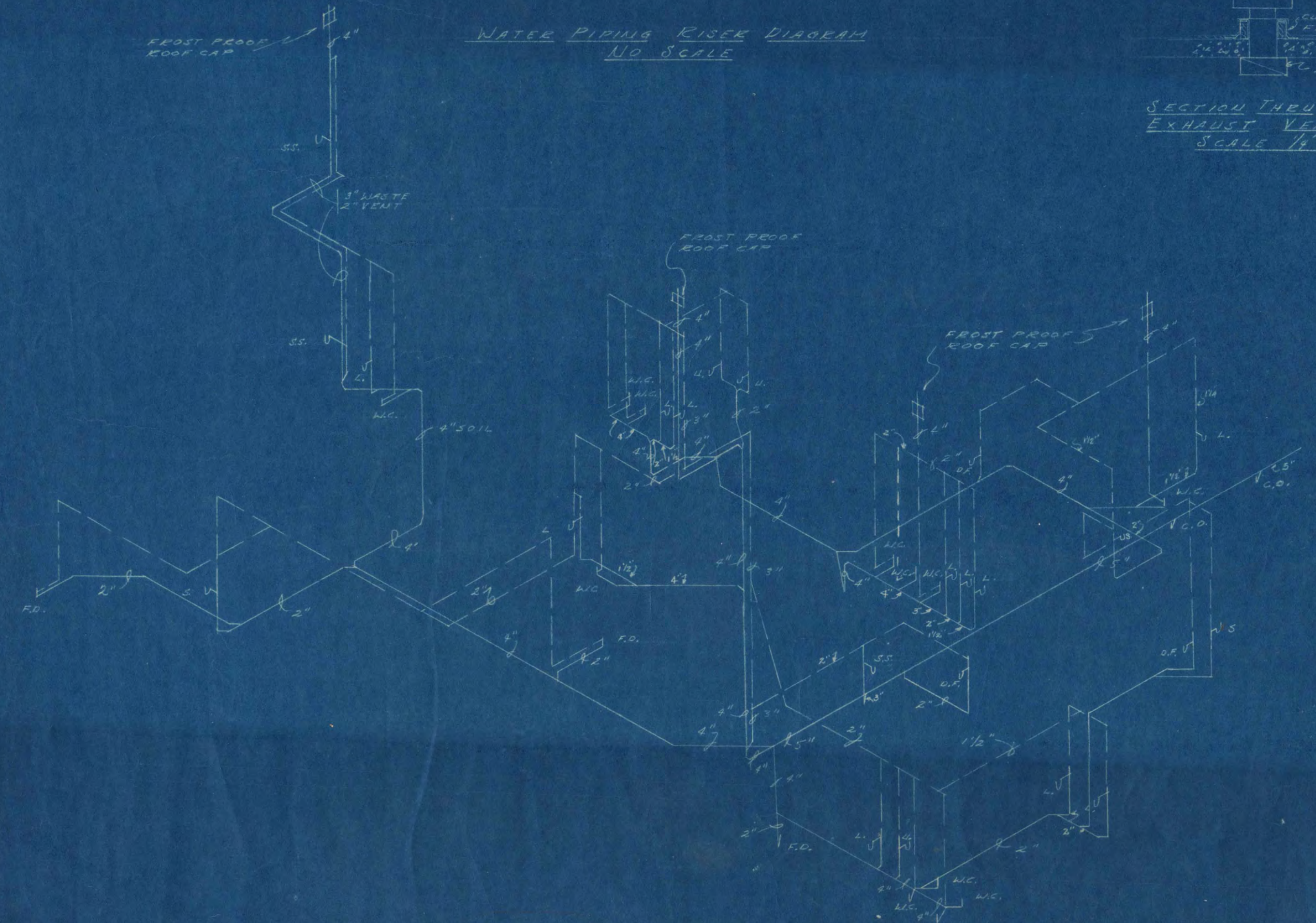
WATER PIPING RISER DIAGRAM  
NO SCALE



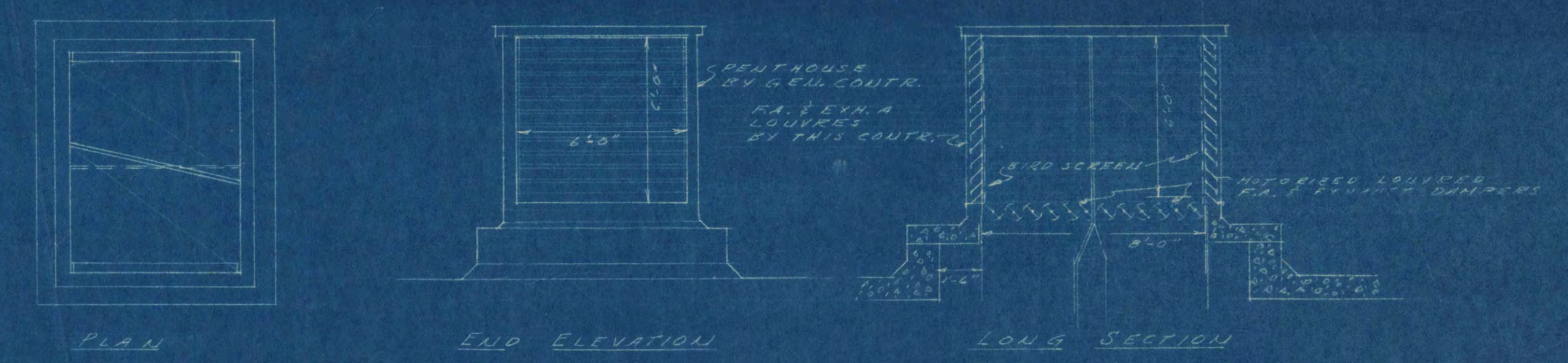
SECTION THRU POWER  
EXHAUST VENTILATOR  
SCALE 1/4" = 1'-0"



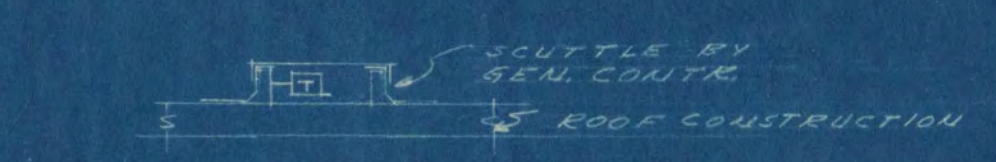
ROOF PLAN  
SCALE 1/2" = 1'-0"



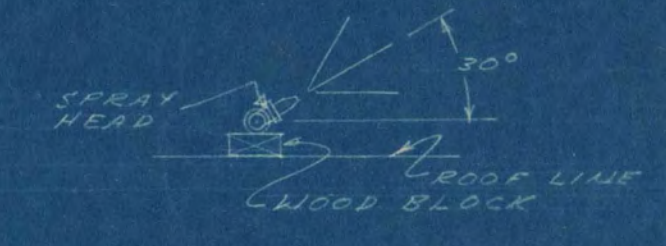
SOIL, WASTE, & VENT PIPING RISER DIAGRAM  
NO SCALE



FRESH AIR INTAKE AND EXHAUST PENTHOUSE DETAILS  
SCALE 1/4" = 1'-0"



SCUTTLE TO ENCLOSE  
ROOF SPRAY THERMOSTATS  
3 SUCH  
SCALE 1/4" = 1'-0"



ROOF SPRAY HEAD DETAIL  
NO SCALE

I hereby certify that this plan, specification, or report was prepared by me or under my direct supervision and that I am a duly Registered Professional Engineer under the laws of the State of Minnesota.  
*O.C. Sawaman*

LIBRARY BUILDING STATE TEACHERS COLLEGE ST. CLOUD, MINNESOTA DEPT. OF ADMINISTRATION - STATE OF MINNESOTA ST. PAUL, MINNESOTA	
DATE JAN. 2, 1957	LOUIS C. PINAULT, ARCHITECT ST. CLOUD, MINNESOTA
CONTR. NO. 4920	GANDMAN & MOORE, ENGINEERS ST. PAUL, MINNESOTA
DRAWN BY J.S.	APPROVED BY <i>John Neill</i> <i>William W. O'Leary</i> <i>R.G. J. [unclear]</i>
FILE NO. 1011	