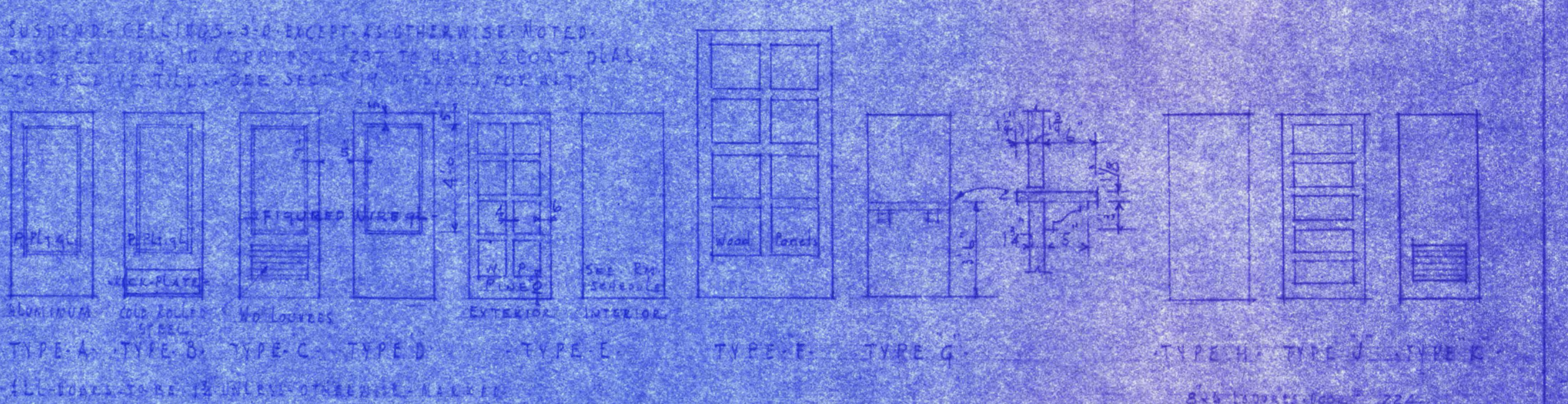


SCHEDULE OF ROOM FINISHES

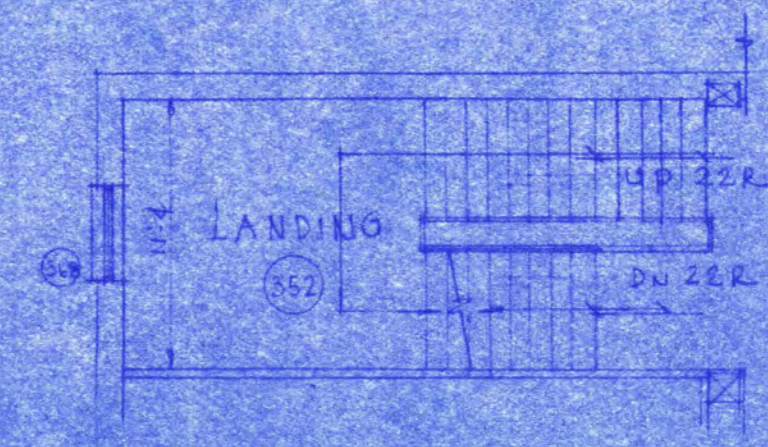
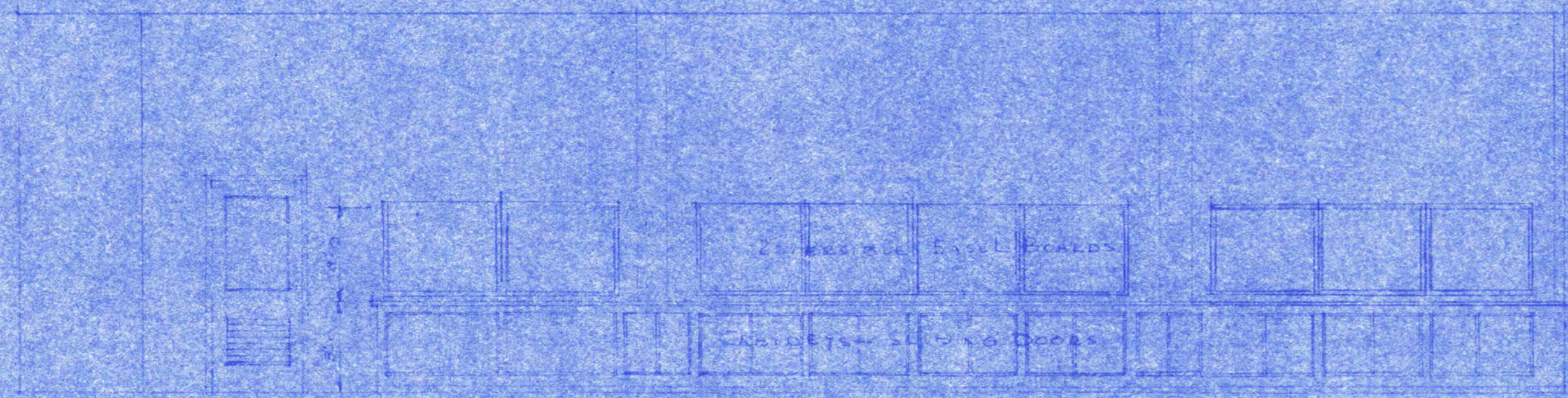
ROOM NUMBER	FINISHES											REMARKS	
	FLOOR	BASE	WALLS	CEILING	WAINSCOT	TRIM	PAINTS & VARNISHES	GLASS	IRON	STEEL	CUPBOARD		
201, 202, 203	✓	✓	✓	✓	✓	✓	✓	✓	✓	✓	✓	✓	SEE PLAN FOR FINISHES IN AUDITORIUM
143	✓	✓	✓	✓	✓	✓	✓	✓	✓	✓	✓	✓	
144	✓	✓	✓	✓	✓	✓	✓	✓	✓	✓	✓	✓	
145	✓	✓	✓	✓	✓	✓	✓	✓	✓	✓	✓	✓	
146	✓	✓	✓	✓	✓	✓	✓	✓	✓	✓	✓	✓	
147	✓	✓	✓	✓	✓	✓	✓	✓	✓	✓	✓	✓	
148	✓	✓	✓	✓	✓	✓	✓	✓	✓	✓	✓	✓	
149	✓	✓	✓	✓	✓	✓	✓	✓	✓	✓	✓	✓	
150	✓	✓	✓	✓	✓	✓	✓	✓	✓	✓	✓	✓	
151	✓	✓	✓	✓	✓	✓	✓	✓	✓	✓	✓	✓	
152	✓	✓	✓	✓	✓	✓	✓	✓	✓	✓	✓	✓	
153	✓	✓	✓	✓	✓	✓	✓	✓	✓	✓	✓	✓	
154	✓	✓	✓	✓	✓	✓	✓	✓	✓	✓	✓	✓	



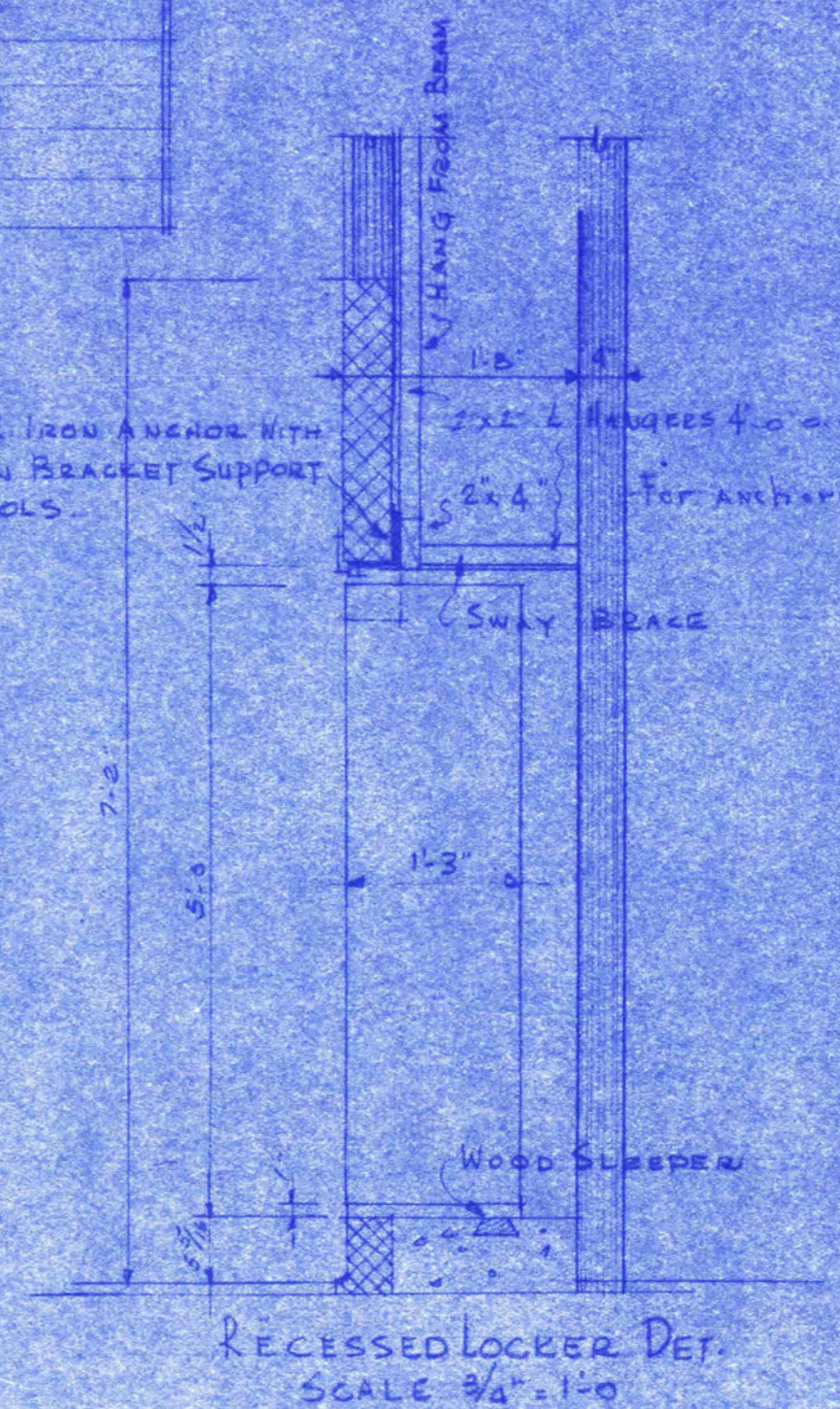
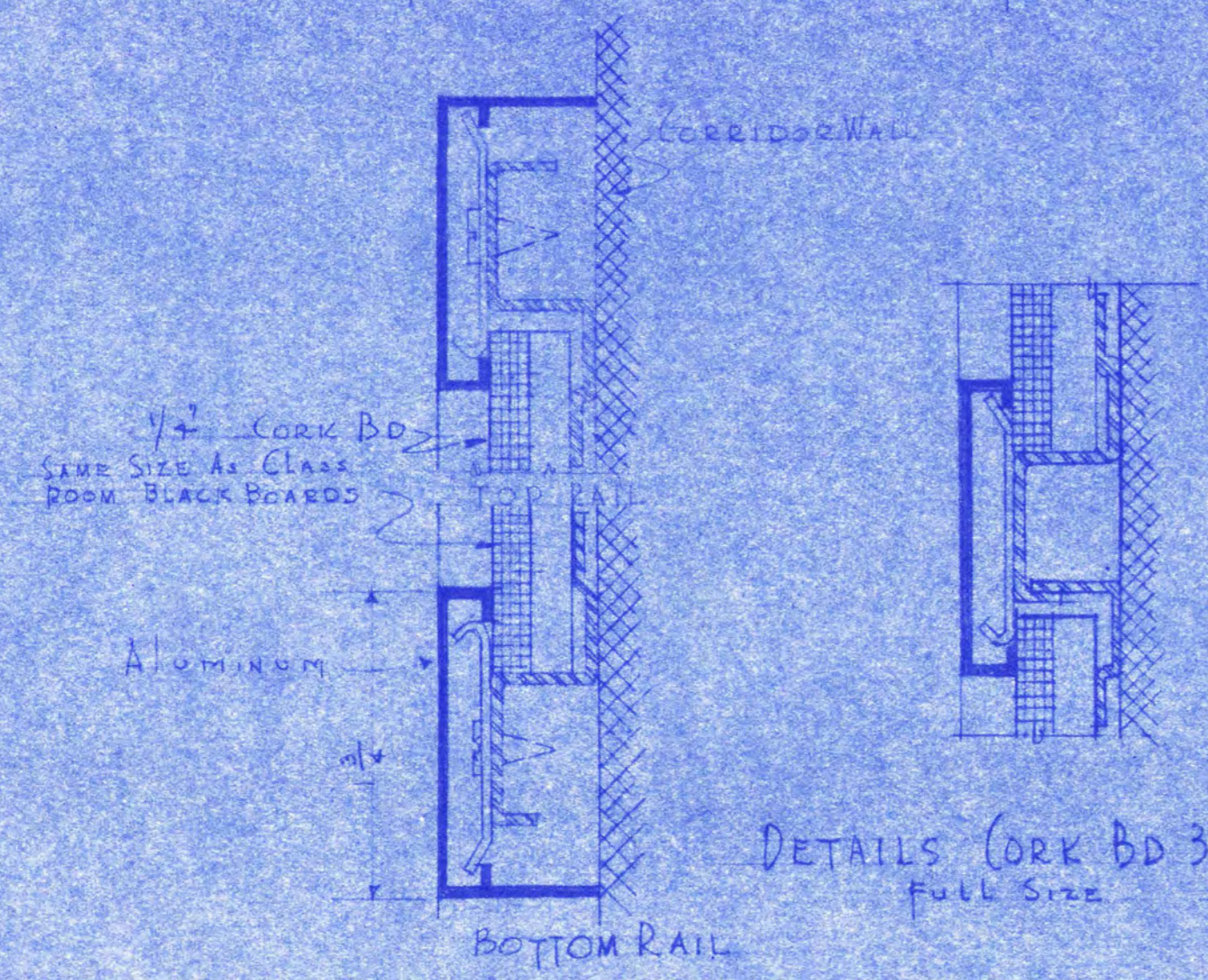
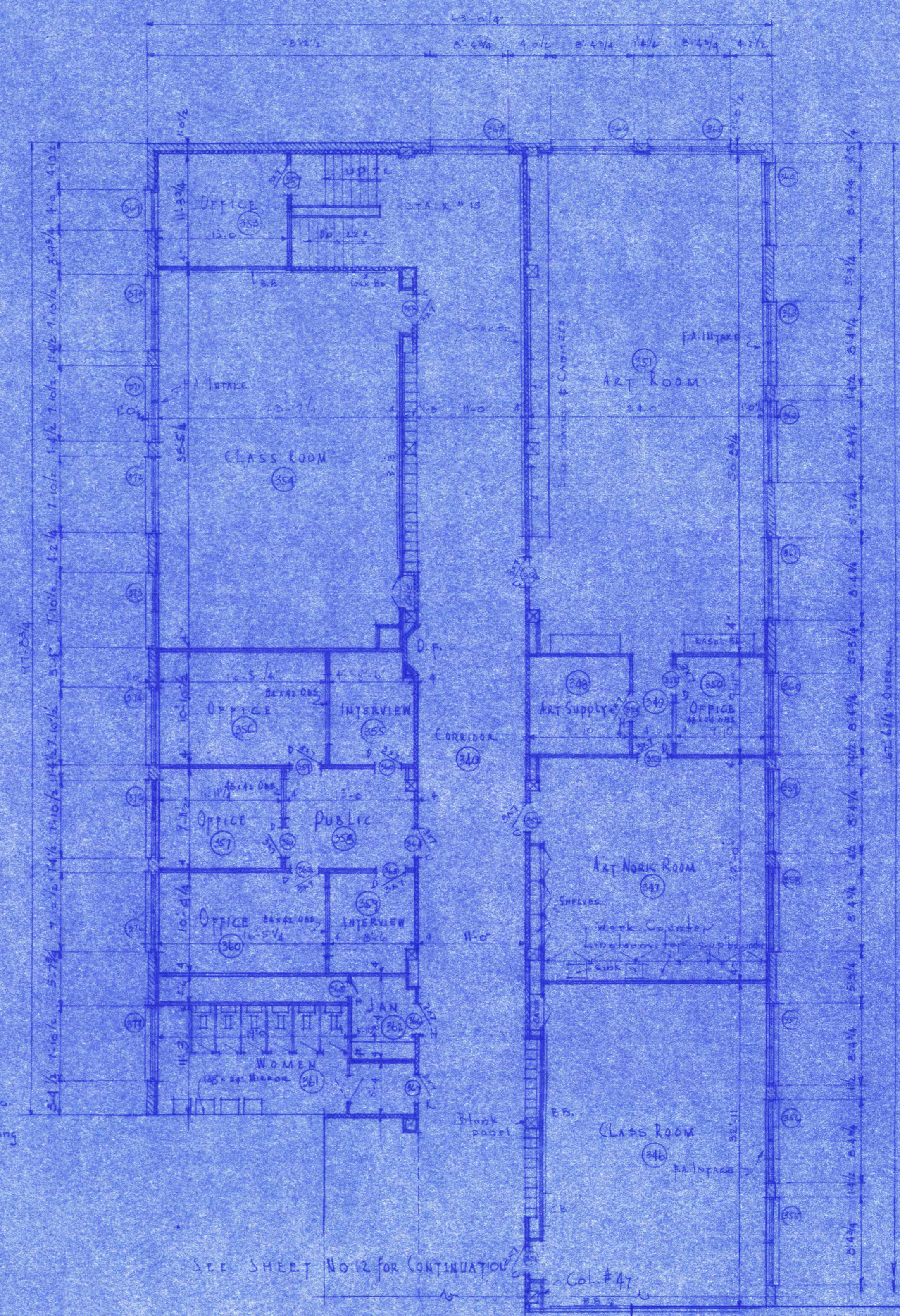
SECOND FLOOR PLAN
Scale: 1/8" = 1'-0"

MAIN BUILDING & AUDITORIUM
FOR
STATE TEACHERS COLLEGE
SAINT CLOUD, MINN.
DEPT. OF ADMINISTRATION - STATE OF MINNESOTA
SAINT PAUL, MINN.

DATE	1-14-21	DESIGNED BY	C. FINAULT & FRANK W. JACKSON - ASSOC. ARCHTS.	SHEET NO.	10
REVISED		DRAWN BY	ELLERBE & CO. CONSULTING ARCHTS.	OF	43
APPROVED BY		APPROVED BY	PRES. OF STATE TEACHERS COLLEGE BOARD	CONTRACT NO.	
APPROVED BY		APPROVED BY	COMMISSIONER OF ADMINISTRATION		339

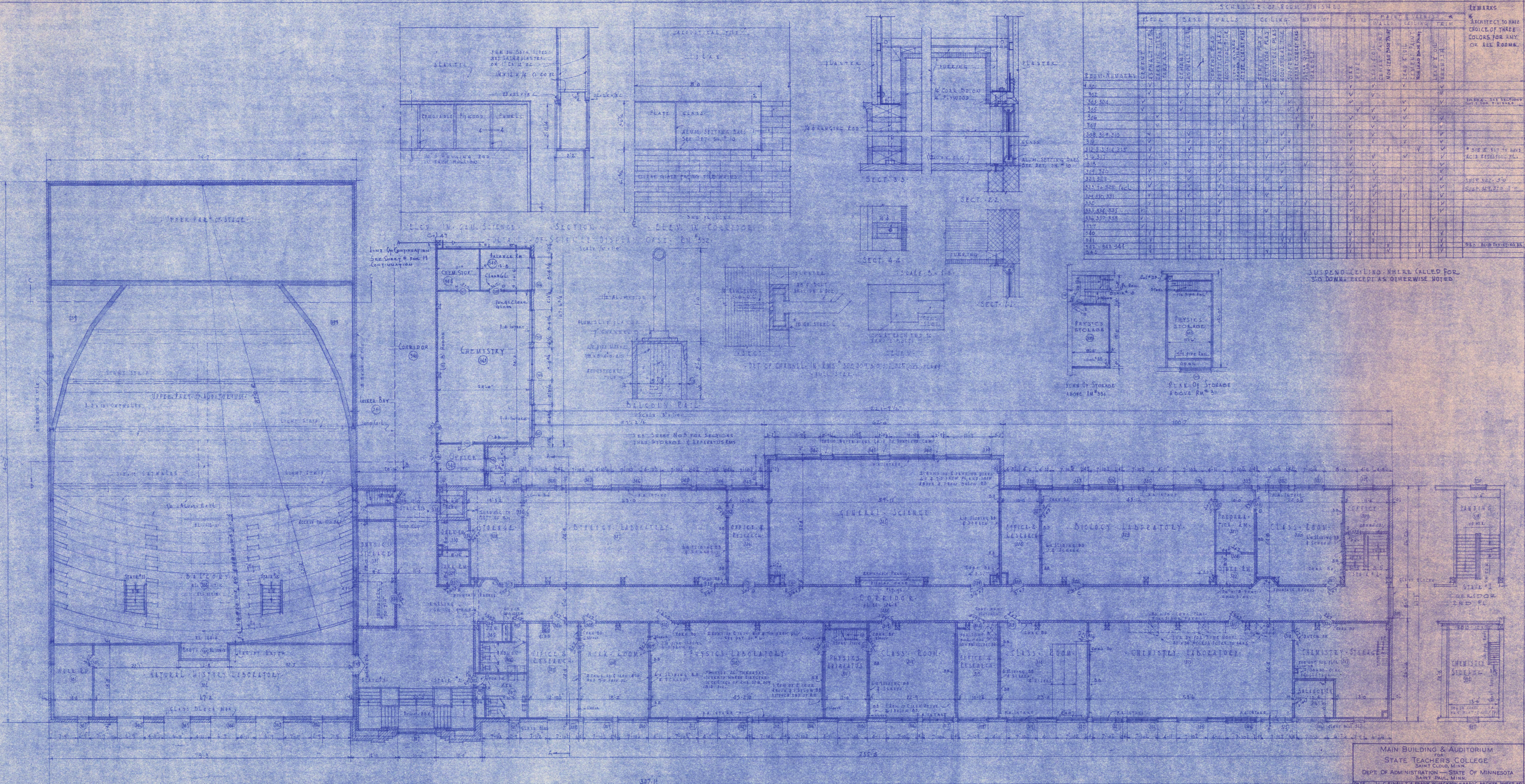


Room No	SCHEDULE OF ROOM FINISHES											REMARKS
	FLOOR	BASE	WALLS	Ceiling	Wainscot Trim	Paint & Varnish *						
	CEMENT ASPHALT TILE TERRAZO	CEMENT ASPHALT TILE	CEMENT PLAS PUTTY GAN PLAS ACROUSTICAL PLAS REFINE CEMENT	CEMENT PLAS PUTTY GAN PLAS ACROUSTICAL PLAS REFINE CEMENT	CEMENT PLAS PUTTY GAN PLAS ACROUSTICAL PLAS REFINE CEMENT	WOOD M.A.S.D.F.	OAK PLUG	LEAD & OIL CEMENT PAINT	LEAD & OIL CEMENT PAINT	LEAD & OIL CEMENT PAINT	LEAD & OIL CEMENT PAINT	
346-347	✓	✓	✓	✓	✓	✓	✓	✓	✓	✓	✓	
348	✓	✓	✓	✓	✓	✓	✓	✓	✓	✓	✓	
349-350-351	✓	✓	✓	✓	✓	✓	✓	✓	✓	✓	✓	
352	✓	✓	✓	✓	✓	✓	✓	✓	✓	✓	✓	
353	✓	✓	✓	✓	✓	✓	✓	✓	✓	✓	✓	
354	✓	✓	✓	✓	✓	✓	✓	✓	✓	✓	✓	
355	✓	✓	✓	✓	✓	✓	✓	✓	✓	✓	✓	
356-357-358	✓	✓	✓	✓	✓	✓	✓	✓	✓	✓	✓	
359	✓	✓	✓	✓	✓	✓	✓	✓	✓	✓	✓	
360	✓	✓	✓	✓	✓	✓	✓	✓	✓	✓	✓	
361	✓	✓	✓	✓	✓	✓	✓	✓	✓	✓	✓	
362	✓	✓	✓	✓	✓	✓	✓	✓	✓	✓	✓	



MAIN BUILDING & AUDITORIUM
FOR
STATE TEACHERS COLLEGE
SAINT CLOUD, MINN.
DEPT. OF ADMINISTRATION STATE OF MINNESOTA
SAINT PAUL, MINN.

DATE	L.C. PINAULT & FRANK W. JACKSON SAINT CLOUD, MINN.	ASSOC. ARCHTS.	SHEET NO.
FEBRUARY	ELLERBE & CO. CONSULTING ARCHITECTS SAINT PAUL, MINN.		11 of 15
REVISED	APPROVED BY PRES. OF ST. CLOUD TEACHERS COLLEGE		CONTRACT NO.
	APPROVED BY PRES. OF STATE TEACHERS COLLEGE BOARD		339
DRAWN BY	APPROVED BY COMMISSIONER OF ADMINISTRATION AN AUTHORIZED SIGNATURE		



ROOM NUMBER	SCHEDULE OF ROOM FINISHES											REMARKS
	FLOOR	BASE	WALLS	CEILING	WAINSCOT	TRIM	PAINT FINISH	WALL FINISH	CEILING FINISH	TRIM FINISH	STAIRS	
301	✓	✓	✓	✓	✓	✓	✓	✓	✓	✓	✓	SEE SECTION FOR FINISH
302	✓	✓	✓	✓	✓	✓	✓	✓	✓	✓	✓	SEE SECTION FOR FINISH
303, 304	✓	✓	✓	✓	✓	✓	✓	✓	✓	✓	✓	SEE SECTION FOR FINISH
305	✓	✓	✓	✓	✓	✓	✓	✓	✓	✓	✓	SEE SECTION FOR FINISH
306	✓	✓	✓	✓	✓	✓	✓	✓	✓	✓	✓	SEE SECTION FOR FINISH
307	✓	✓	✓	✓	✓	✓	✓	✓	✓	✓	✓	SEE SECTION FOR FINISH
308, 309, 310	✓	✓	✓	✓	✓	✓	✓	✓	✓	✓	✓	SEE SECTION FOR FINISH
311	✓	✓	✓	✓	✓	✓	✓	✓	✓	✓	✓	SEE SECTION FOR FINISH
312, 313, 314, 315	✓	✓	✓	✓	✓	✓	✓	✓	✓	✓	✓	SEE SECTION FOR FINISH
316, 317	✓	✓	✓	✓	✓	✓	✓	✓	✓	✓	✓	SEE SECTION FOR FINISH
318	✓	✓	✓	✓	✓	✓	✓	✓	✓	✓	✓	SEE SECTION FOR FINISH
319, 320	✓	✓	✓	✓	✓	✓	✓	✓	✓	✓	✓	SEE SECTION FOR FINISH
321, 322	✓	✓	✓	✓	✓	✓	✓	✓	✓	✓	✓	SEE SECTION FOR FINISH
323 to 328	✓	✓	✓	✓	✓	✓	✓	✓	✓	✓	✓	SEE SECTION FOR FINISH
329, 330, 331	✓	✓	✓	✓	✓	✓	✓	✓	✓	✓	✓	SEE SECTION FOR FINISH
332	✓	✓	✓	✓	✓	✓	✓	✓	✓	✓	✓	SEE SECTION FOR FINISH
333, 334, 335	✓	✓	✓	✓	✓	✓	✓	✓	✓	✓	✓	SEE SECTION FOR FINISH
336, 337, 338	✓	✓	✓	✓	✓	✓	✓	✓	✓	✓	✓	SEE SECTION FOR FINISH
339	✓	✓	✓	✓	✓	✓	✓	✓	✓	✓	✓	SEE SECTION FOR FINISH
340	✓	✓	✓	✓	✓	✓	✓	✓	✓	✓	✓	SEE SECTION FOR FINISH
341	✓	✓	✓	✓	✓	✓	✓	✓	✓	✓	✓	SEE SECTION FOR FINISH
342, 343, 344	✓	✓	✓	✓	✓	✓	✓	✓	✓	✓	✓	SEE SECTION FOR FINISH
345	✓	✓	✓	✓	✓	✓	✓	✓	✓	✓	✓	SEE SECTION FOR FINISH

SUSPEND CEILING WHERE CALLED FOR, 3"0 DOWN, EXCEPT AS OTHERWISE NOTED.

THIRD FLOOR PLAN
307.H
307.H

MAIN BUILDING & AUDITORIUM
 STATE TEACHERS COLLEGE
 SAINT CLOUD, MINN.
 DEPT. OF ADMINISTRATION - STATE OF MINNESOTA
 DATE: J.E.C. 1922
 REVISED: FEB 1922
 APPROVED BY: [Signature]
 DRAWN BY: [Signature]

L.C. PINAULT & FRANK W. JACKSON - ASSOC. ARCHTS. SHEET NO. 12 OF 25
 SAINT CLOUD, MINN.
 ELLERBE & CO. CONSULTING ARCHITECTS
 SAINT PAUL, MINN.
 APPROVED BY: [Signature]
 PRES. OF STATE TEACHERS COLLEGE BOARD
 APPROVED BY: [Signature]
 COMMISSIONER OF ADMINISTRATION
 AN AUTHORIZED SIGNATURE

339