

NOTE: ALL LIGHTING & RECEPTACLES SHOWN ARE 120/208 VOLTS.
FOR 277/480 VOLT CIRCUITS REFER TO SHEET NG-E-3
FOR NUMBERED NOTES & SYMBOLS SEE DRWG. E-2

CENTENNIAL HALL

LEARNING RESOURCES CENTER

ST. CLOUD STATE COLLEGE
ST. CLOUD, MINNESOTA

ORR-SCHELEN-MAYERON
AND ASSOCIATES, INC.
CONSULTING ENGINEERS
114 CLEAR AVENUE, APPROPRIUS, MINN. 55003
1166-S

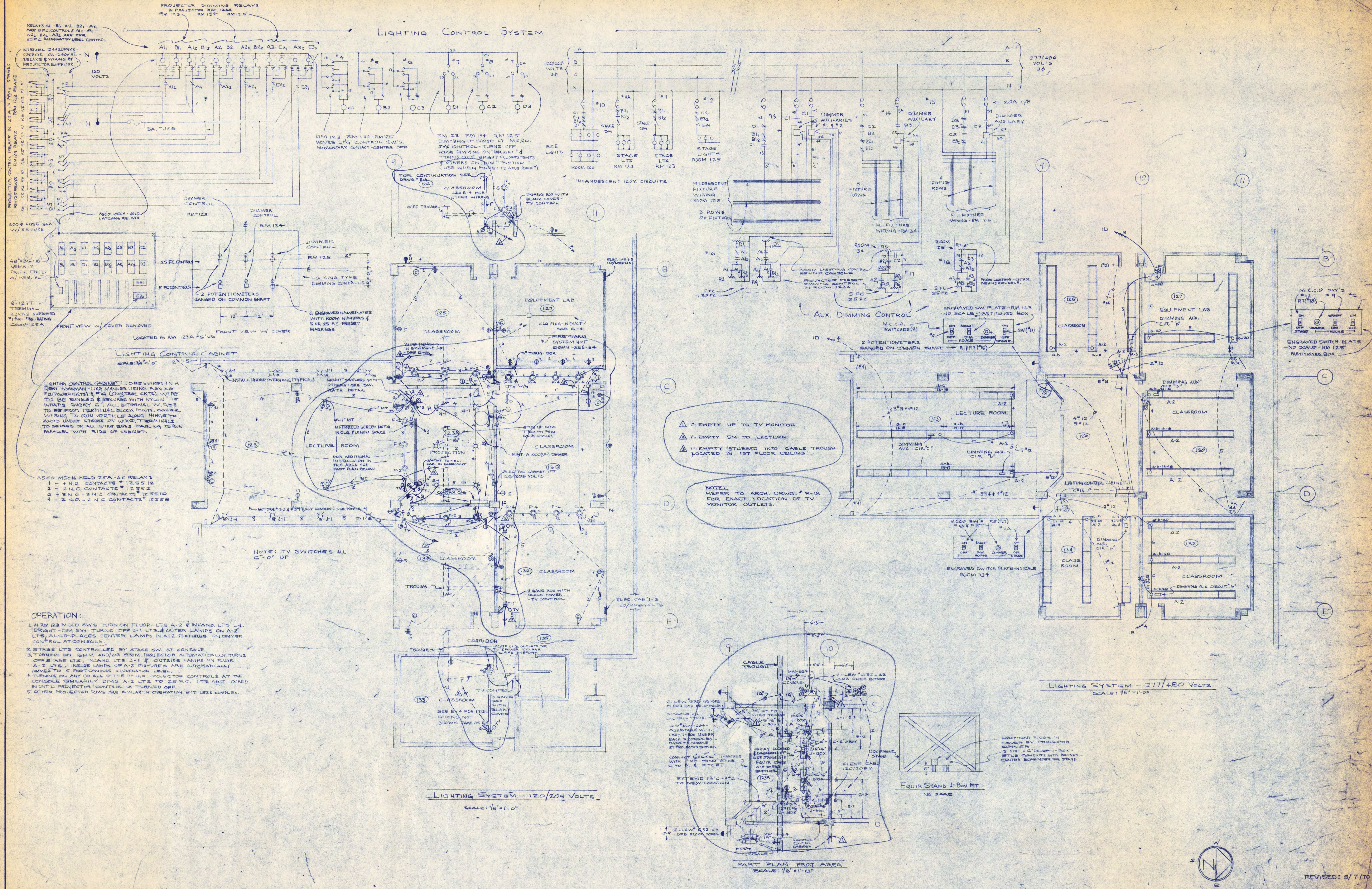
FIRST FLOOR PLAN
SCALE: 3/8" = 1'-0"
LOW VOLTAGE & SYSTEMS

COMM. 6926
DRAWN: WLS:ADG
DATE: 7-17-68
CHECKED: WLS

S.C. SMILEY & ASSOCIATES - ARCHITECTS
Minneapolis, Minn.

SHEET
E-4
OF 12

LIGHTING CONTROL SYSTEM



RELAYS A1, B1, A2, B2, A3, B3
 ARE 5 FC CONTROL FLOOR
 A2, B2, A3, B3 ARE 25 FC
 ILLUMINATION LEVEL CONTROL

INTERNAL 24V SUPPLY
 CONTACTS (ON 240V LIT)
 RELAYS & WIRING BY
 PROJECTOR SUPPLIER

120 VOLTS

5A FUSE

DIMMER CONTROL

600V FUSE BLK
 W/ 5A FUSE

6" x 12" x 18"
 NEMA 12
 PANEL ENCL.
 W/ RRM, PLT

6-12 FT
 TERMINAL
 BLOCK NUMBERED
 1" MIN. SPACING
 SCALY-25A

FRONT VIEW W/ COVER REMOVED

LOCATED IN RM 123A 7'6" UP

LIGHTING CONTROL CABINET
 SCALE: 3/4" = 1'-0"

LIGHTING CONTROL CABINET TO BE WIRED IN A
 FRONT WORKMAN-LIKE MANNER USING PLYWOOD
 REINFORCEMENT & 1/2" CONDUIT. WIRE TO
 BE BUNDLED & SECURED WITH NYLON TIE
 WRAPS QUARTY G. ALL EXTERNAL WIRES
 TO BE FROM TERMINAL BLOCK WITH CONDUIT
 WIRING TO GO IN VERTICAL ALONG WALLS TO
 AVOID UNDER STRESS ON WIRES. TERMINALS
 TO BE USED ON ALL WIRE BUNDLES CARRYING TO RUN
 PARALLEL WITH SIDE OF CABINET.

ASCO MECH. HOLD 25A 5 FC RELAYS
 1 - 4 N.O. CONTACTS # 125512
 2 - 2 N.C. CONTACTS # 12552
 4 - 2 N.O. 3 N.C. CONTACTS # 125510
 4 - 2 N.O. 2 N.C. CONTACTS # 12558

NOTE: TV SWITCHES ALL
 6"0" UP

OPERATION:

1. IN RM 123 M.C.C.O. SW'S TURN ON FLOOR LITS A-2 & INCAND. LITS J-1.
 BRIGHT-DIM SW TURNS OFF J-1 LITS & OUTER LAMPS ON A-2
 LITS, ALSO PLACES CENTER LAMPS IN A-2 FIXTURES ON DIMMER
 CONTROL AT CONSOLE.

2. STAGE LITS CONTROLLED BY STAGE SW AT CONSOLE.

3. TURNING ON LIGHT AND/OR DIMM PROJECTOR AUTOMATICALLY TURNS
 OFF STAGE LITS, INCAND. LITS J-1 & OUTSIDE LAMPS ON FLOOR.
 A-2 LITS, INSIDE LAMPS OF A-2 FIXTURES ARE AUTOMATICALLY
 DIMMED TO 5 FOOT CANDLES ILLUMINATION LEVEL.

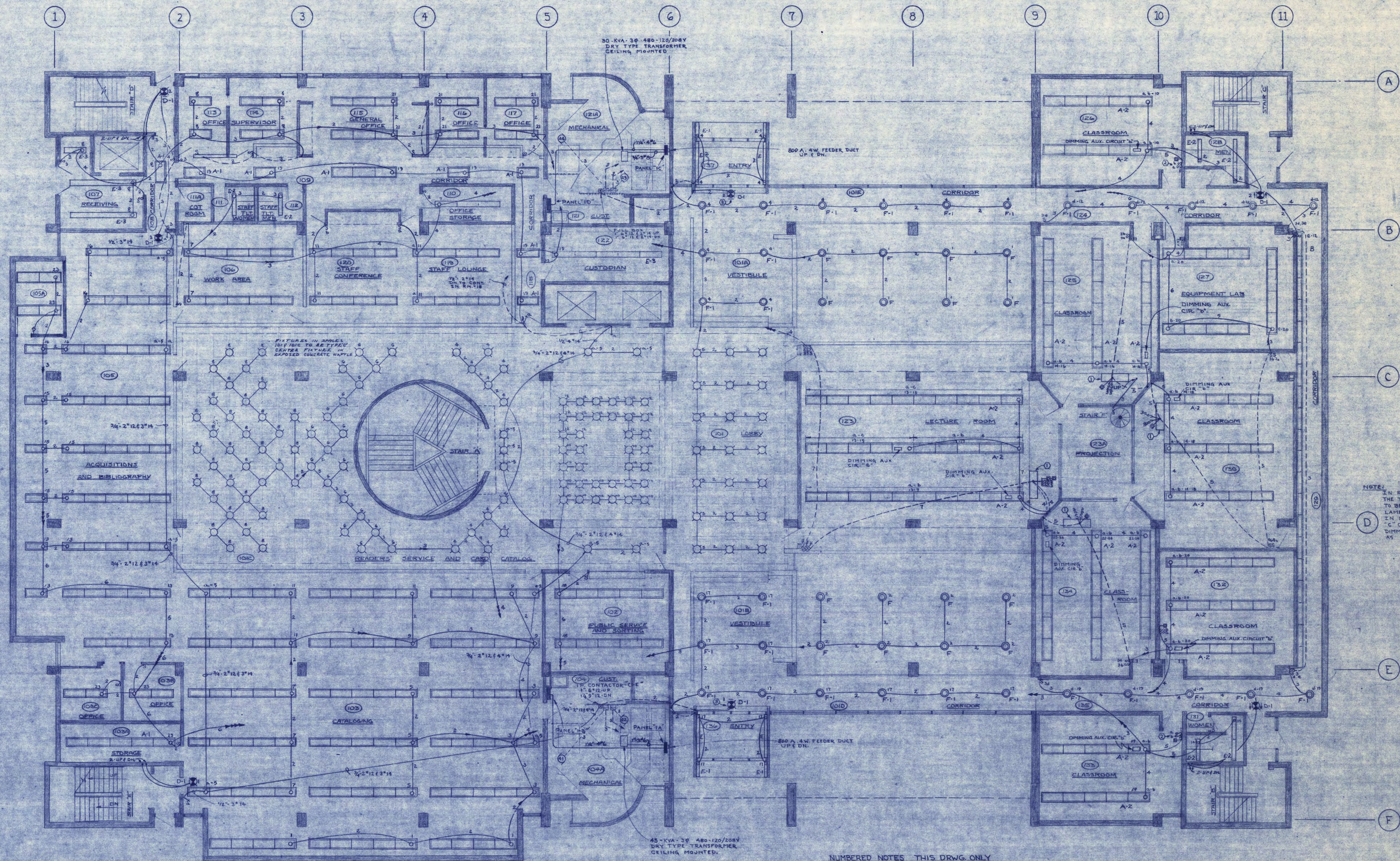
4. TURNING ON ANY OR ALL OF THE OTHER PROJECTOR CONTROLS AT THE
 CONSOLE SIMILARLY DIMS A-2 LITS TO 25 FC. LITS ARE LOCKED
 IN UNTIL PROJECTOR CONTROL IS TURNED OFF.

5. OTHER PROJECTOR RMS ARE SIMILAR IN OPERATION BUT LESS COMPLEX.

LIGHTING SYSTEM - 120/208 VOLTS
 SCALE: 1/8" = 1'-0"

LIGHTING SYSTEM - 277/480 VOLTS
 SCALE: 1/8" = 1'-0"

REVISED: 8/7/70



30-KVA-3Ø-480-120/208V
DRY TYPE TRANSFORMER
CEILING MOUNTED

800 A.W. FEEDER DUCT
UP 1 DN.

45-KVA-3Ø-480-120/208V
DRY TYPE TRANSFORMER
CEILING MOUNTED

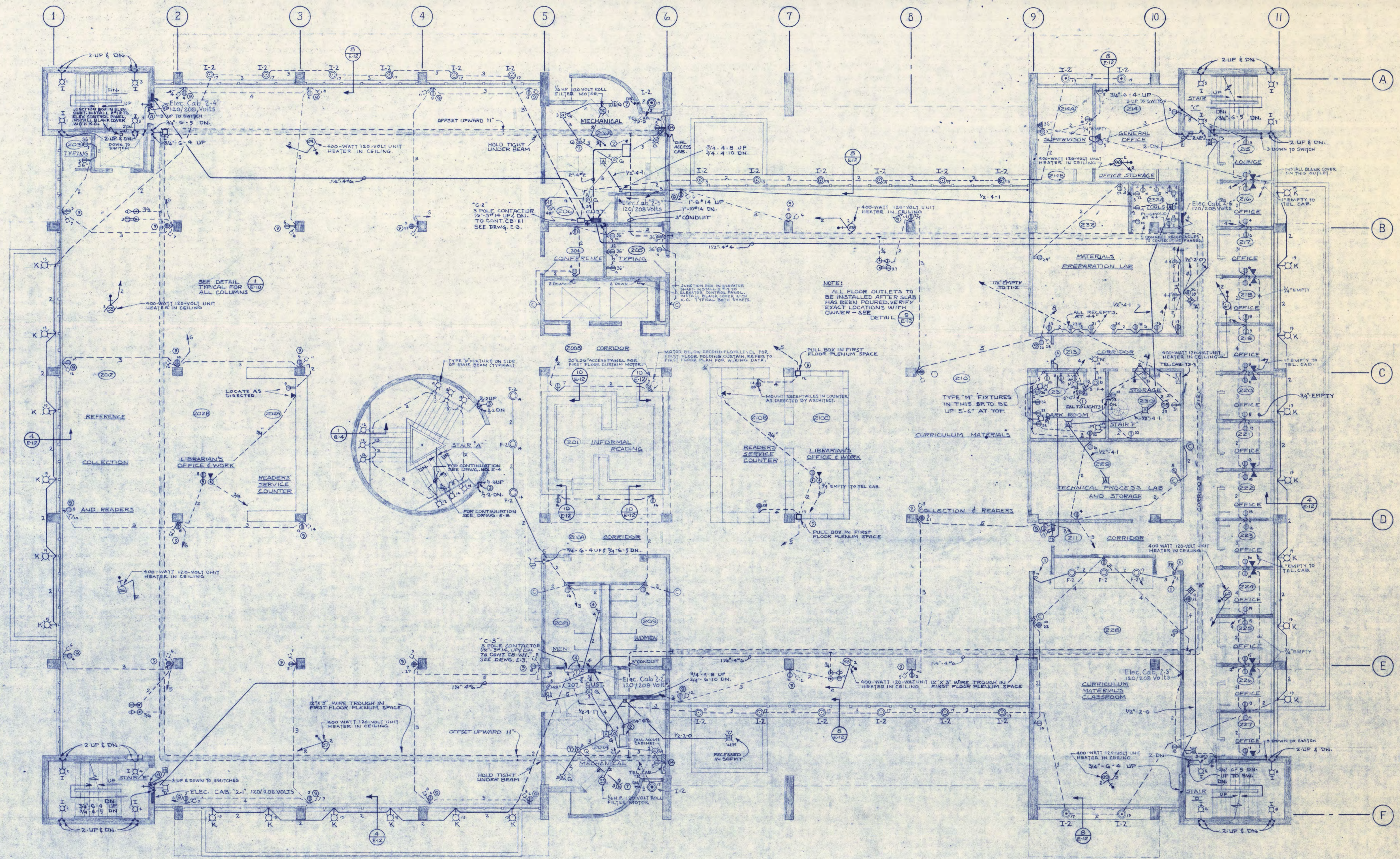
ALL LIGHTING CIRCUITS TERMINATE
IN PNL'S 7'18" x 10"
IN PNL'S 15" CIRCUITS 1 THRU TO BE
SWITCHED AT PNL ONLY.
IN PNL "10" CIRCUITS 1 THRU TO
BE SWITCHED AT PNL ONLY.

- NUMBERED NOTES - THIS DRWG. ONLY**
- ① MOUNT SWITCHES & DIMMER CONTROLS
IN FLOOR MOUNTED CONTROL CONSOLE-
CONSOLE BY OTHERS.
 - ② MOUNT SWITCHES IN MULTI-GANG BOX WITH
BARRIERS & UNDER SAME PLATE WITH 120V SWITCHES
 - ③ MOUNT EXIT LIGHT ON TOP OF
CONCRETE CANOPY. WIRING TO ENTER
FIXTURE FROM BOTTOM.

NOTE:
ALL CIRCUITS SHOWN ON THIS DRWG ARE 277/480V.
FOR 120/208V, CIRCUITS, SYSTEMS, ETC. SEE SHEET E-4
ALL FIXTURES TO BE TYPE X UNLESS NOTED
OTHERWISE.

NOTE:
IN R.M'S. 123, 125, 126, 130, 132, 133, 134
THE TWO OUTSIDE LAMPS PER FIXTURE
TO BE ON "A" CIRCUIT, THE TWO INSIDE
LAMPS TO BE ON "B" CIRCUIT.
IN R.M'S. 123, 125, 126, 130, 132, 133, 134
"C" CIRCUITS TO BE DIMMED. MOUNT
DIMMING AUXILIARY IN LIGHTING FIXTURES
AS SHOWN.



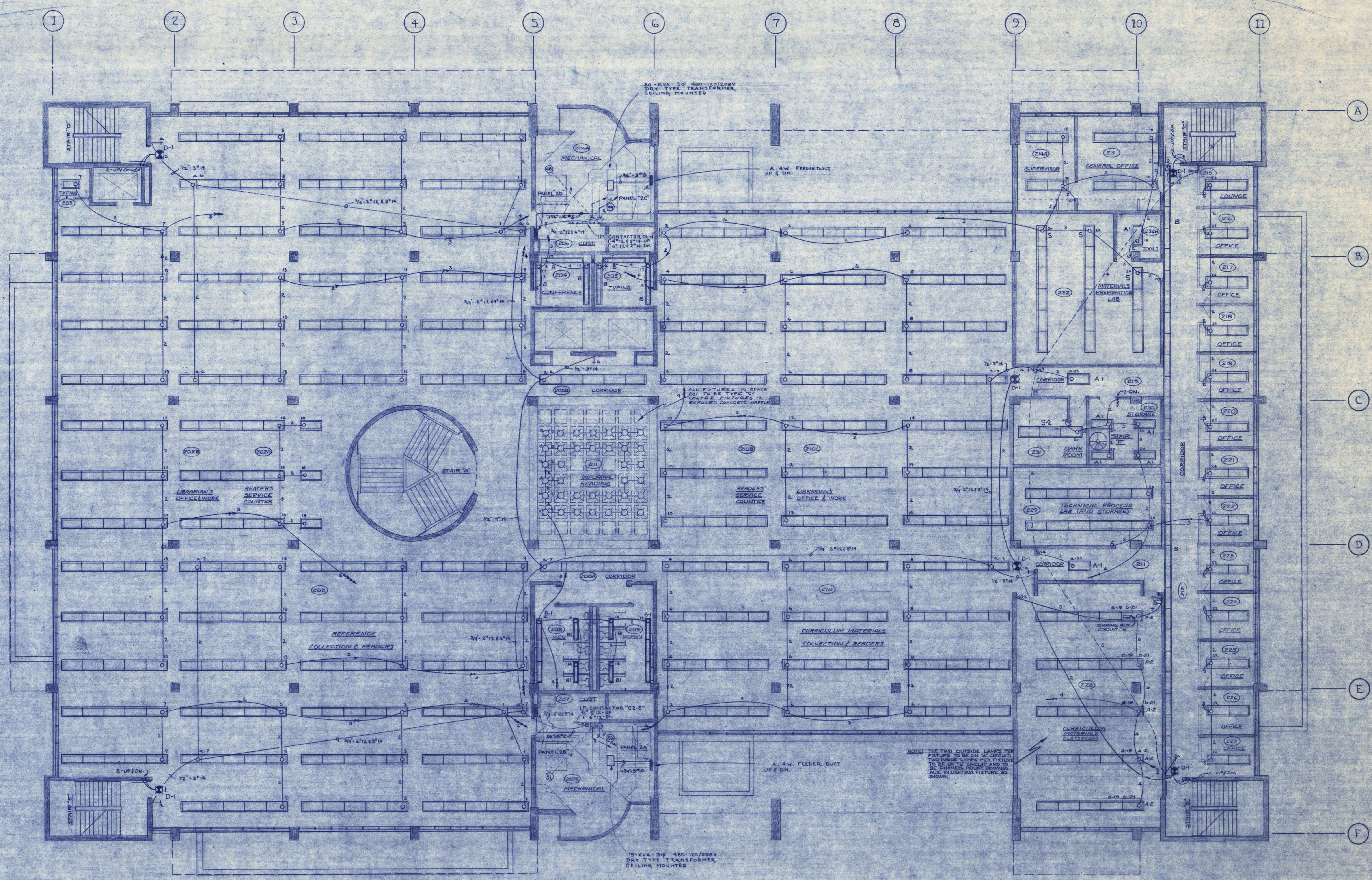


NOTE:
ALL FLOOR OUTLETS TO
BE INSTALLED AFTER SLAB
HAS BEEN POURED. VERIFY
EXACT LOCATIONS WITH
OWNER - SEE DETAIL 9
E-17

NOTE: ALL LIGHTING & RECEPTACLES SHOWN ARE 120/208 VOLTS.
FOR 277/480 VOLT CIRCUITS, REFER TO SHEET E-7

FOR NUMBERED NOTES & SYMBOLS, SEE DRAWING NO. E-2





ALL LIGHTING CIRCUITS TERMINATE IN PNL'S 2B & 2D. IN PNL "2B", CIRCUITS 1 THRU 18 TO BE SWITCHED AT PNL ONLY. IN PNL "2D", CIRCUITS 1 THRU 10 TO BE SWITCHED AT PNL ONLY.

NOTE: ALL CIRCUITS SHOWN ON THIS DRWG ARE 277/480V FOR 120/208V. SYSTEMS, ETC. SEE SHEET "E-6" & ALL FIXTURES TO BE TYPE "X" EXCEPT WHERE NOTED.

